

# KENTUCKY

vs. Tennessee

November 21, 1981  
Commonwealth Stadium



Vol. 3, No. FB-6

**INSIDE:**  
Wildcat  
Backfield

\$2.00

*Today, You Need A Great Financial Institution Behind You.™*

# We're giving coal the power it needs. The power of nearly \$2 billion in assets.



At Citizens Fidelity Energy Company, we put technical know-how and capital resources together in a unique and highly-specialized financial service organization. We can provide the financing and any other related services you need to make your project a reality.

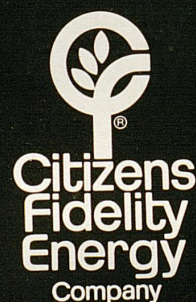
**WE'RE THE COAL BANK  
FOR THE COAL STATE.**

We were born here—and we know the territory. Because of our resources of nearly \$2 billion *and* because of our high level of technical expertise, we can service practically any financial

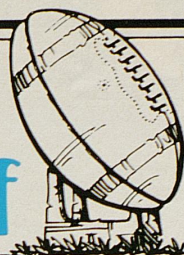
need of the coal industry in Kentucky and the surrounding region—from major equipment purchases and mine development to preparation plant and transportation-facility construction.

**WE'RE CITIZENS FIDELITY  
ENERGY COMPANY.  
AND WE WANT TO HELP.**

For expert financial assistance on your next project, give us a call at 502/581-4955. Or write Citizens Fidelity Energy Company, Citizens Plaza, Louisville, KY 40296. A financial service of Citizens Fidelity Corporation.



# Kentucky Kickoff



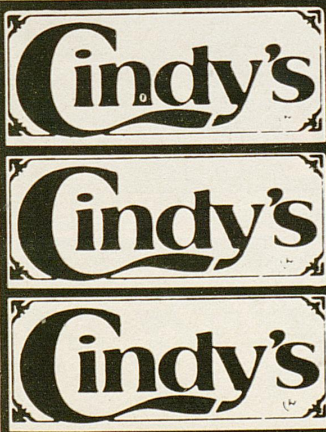
## Contents

The University of Kentucky	5
State Government	6
University Administration	9
Coach Fran Curci	11
Assistant Coaches	13
Athletics Department	14
The Wildcats	18
Wildcat Football Feature	22
Wildcat Freshmen Profiles	26
Kentucky Roster	28
Scorecard	30
Opponent's Roster	33
Opponent	36
Kentucky Statistics	42
Wildcat Cheerleaders	45
Around Campus	46
Alumni News	49
Kentucky Wildcat Marching Band	50
Schedules	52
Stadium Information	54
UK Sports Information	57

Editor ..... Barry Bronson  
 Editorial Consultant ..... Russell Rice  
 Photography ..... Bill Straus Photography  
 Ad Sales ..... Kenneth R. Adams, Jenny Eubanks, Marc S. Kidd  
 Printing ..... Thoroughbred Press, Lexington, Ky.

Kentucky Kickoff is published by Lexington Productions, Inc., a division of Jim Host & Associates, 120 Kentucky Avenue, Lexington, Ky. 40502 — Kenneth R. Adams, General Manager, Telephone 233-3533.

COVER PHOTO: Bill Straus Photography



**"Something Different"**



**"We Scramble For The Blue"**

Breakfast — Lunch — Dinner  
 Drive Thru

TATES CREEK AT MT. TABOR

Cliff Hagan's



## RIBEYE

featuring

"FRESH CUT TO ORDER"

## Top Choice STEAKS

Over 27 Different  
 Condiments in our  
 Open Salad Bar

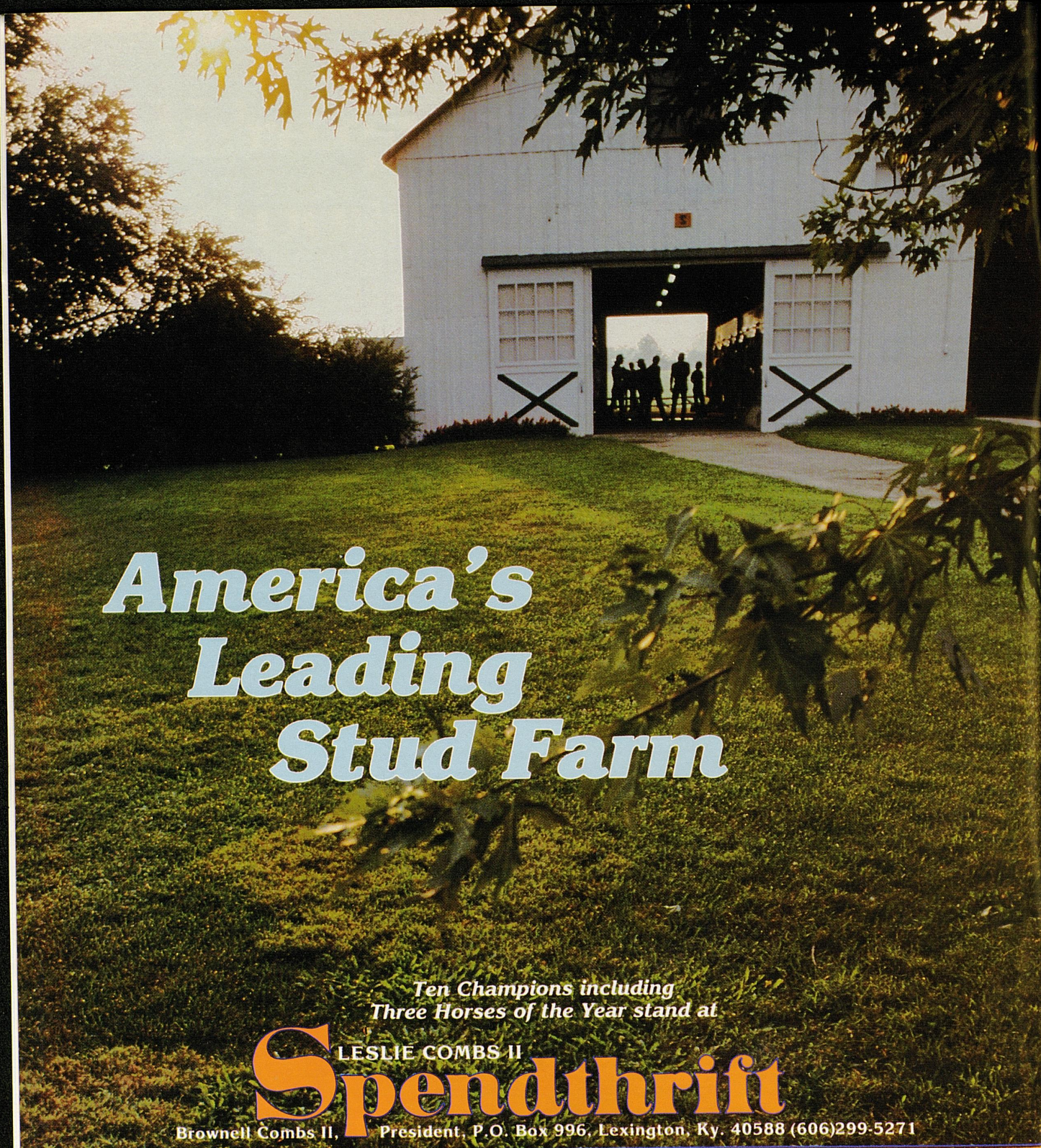
Select Wines  
 & Cocktails  
 Available\*

Potato and Bread  
 Bread Freshly Baked  
 Daily In Our Oven

**PRIVATE PARTY ROOMS  
 AVAILABLE FOR CLUBS, ETC.**

- 941 Winchester Rd., Lex., Ky.  
 Ph: 253-0750
- Franklin Square Shopping Ctr.,  
 Frankfort, Ky. 227-2380
- I-75 Interchange, Berea, Ky.  
 986-3639

\*Not Available in Berea, Ky.



# America's Leading Stud Farm

Ten Champions including  
Three Horses of the Year stand at

LESLIE COMBS II

# Spendthrift

Brownell Combs II, President, P.O. Box 996, Lexington, Ky. 40588 (606)299-5271

- Affiliate
- Affirmed
- Benas Me Mind
- Big John Taylor
- Blue Times
- Bold Hour
- Cara
- Clem Pac
- Colak
- Cornish Prince
- Delta Oji
- Dewan Keys
- Exclusive Native
- Gallant Man
- Golden Ace
- Grey Legion
- Huguenaot
- J.O. Tablin
- Jungle Savage
- Kentucky Gold
- Lisi
- Lord Avie
- Marshua's Dancer
- Muscovite
- Nashua
- Nasy and Bold
- Native Royalty
- Northern Jove
- Orbit Dancer
- Princely Native
- Proud Native
- Raise a Native
- Seattle Native
- Sham
- Silent Cal
- Sirlad
- State Dinner
- Triple Bend
- Turn to Mars
- Valdez
- Wajima



*The University of Kentucky...*

## A Great and Growing University

**By Bernie Vonderheide**  
**UK Information Services**

**T**ruly one of the leading land grant institutions in the nation, the University of Kentucky has a national and international reputation in such diverse fields as medicine, business, engineering, law and agriculture.

More than 23,000 students are enrolled on the main campus in Lexington. Another 19,000 students are enrolled in the 13 community colleges operated by UK across the state at Ashland, Henderson, Cumberland, Hazard, Elizabethtown, Prestonsburg, Hopkinsville, Somerset, Louisville, Paducah, Maysville, Madisonville and Lexington.

UK has a graduate school and 17

academic colleges . . . Arts and Sciences, Agriculture, Engineering, Business and Economics, Education, Home Economics, Library Science, Social Work, Architecture, Communications, Fine Arts, Law, Medicine, Nursing, Dentistry, Allied Health Professions and Pharmacy.

The UK library, one of the finest in the nation, has some 1.7 million volumes and ranks 13th in the nation in its microform holdings.

The UK Honors Program for students who have shown a record of academic achievement has more than 600 students enrolled. The UK debate team consistently ranks among the top debate teams in the nation.

UK has an outstanding faculty with some of the top teachers in the nation.

The UK mathematics department has seven faculty members who have been awarded the prestigious Sloan Fellowship and the political science department consistently ranks among the top such departments in the nation in the number of scholarly papers published.

UK also is noted for its research efforts, especially in the fields of energy, tobacco and cancer.

In the arts, thousands of people attend the many art, music and theater productions at UK. The UK Marching Band is one of the best collegiate contingents in the country, and the UK orchestra, the chorus and the theater offer sterling performances throughout the year.

UK's Center for the Arts contains

(continued on page 58)

# State Government

## The Honorable John Y. Brown, Jr. Governor of Kentucky

John Y. Brown, Jr., became the 51st governor of Kentucky on December 11, 1979.

Born on December 28, 1933, Governor Brown graduated from Lafayette High School in his hometown, Lexington, and obtained a Bachelor of Arts degree from the University of Kentucky in 1957. He graduated from the UK College of Law three years later.

The Governor served in the U.S. Army Reserve from 1959 to 1965.

He has been named the Outstanding Young Man of America by the National Junior Chamber of Commerce (1965), as one of the outstanding Civic Leaders of America (1967) and Louisville's Outstanding Young Man by the same group. Lions Club International gave him an Outstanding American Award (1974) and he is the youngest person to be named to the Uni-



versity of Kentucky's Hall of Fame.

This past summer, Gov. Brown was elected vice chairman of the Democratic Governors Conference and states' co-chairman of the Appalachian Regional Commission.

He has three children by a pre-

vious marriage, John Y. Brown, III (18), Eleanor (16) and Sandra (15). He married Phyllis George on March 17, 1979 and they recently added a fourth child to the family, Lincoln George Tyler Brown, born in June, 1980.



*Traditional Clothing for Gentlemen, Women, and Boys*  
LEXINGTON, KENTUCKY








*Clothes from Leonard Cox have always been considered an excellent investment. Our collections, chosen from the finest manufacturers available, reflect a commitment to quality, tradition, elegance, and classic good taste. If you prefer natural fibers, exceptional tailoring and demand the very finest. . .*







*Visit us in Downtoun Lexington or in the Lansdowne Shoppes*

# Ashland Oil has an infinite source of energy-



## the creative minds of our research scientists and engineers.

Instead of searching around the world for new sources of crude oil, Ashland Oil is developing alternative sources of energy in the laboratory. For example:

**More gasoline from crude oil.** Ashland Oil's new Reduced Crude Conversion (RCC) process makes it possible to get 24 percent more gasoline out of every barrel of crude oil we refine. This means that Ashland will be able to produce the same amount of gasoline we're producing now, using fewer barrels of expensive crude oil.

And if the RCC process is adopted by other oil companies, America could substantially decrease its dependence on foreign crude oil.

**Crude oil from coal.** America has enough coal to take us well into the 22nd century. At Ashland Oil, we're experimenting with coal liquefaction, the process which turns coal into synthetic crude oil. This new

synthetic crude oil can be refined into gasoline and other petroleum products.

We now plan to build a major facility in Breckinridge County, Kentucky, to produce oil from coal commercially.

Both our RCC and coal liquefaction projects are under way at our refinery in Catlettsburg, Kentucky.

**Gasohol from corn.** Ashland will soon be able to meet 12 percent of America's goal for ethanol production from its coal-fired South Point, Ohio, ethanol plant.

By converting corn into ethanol (ethyl alcohol) and adding ethanol to gasoline, we'll be producing gasohol—a third important ingredient in America's formula for decreasing energy dependence.

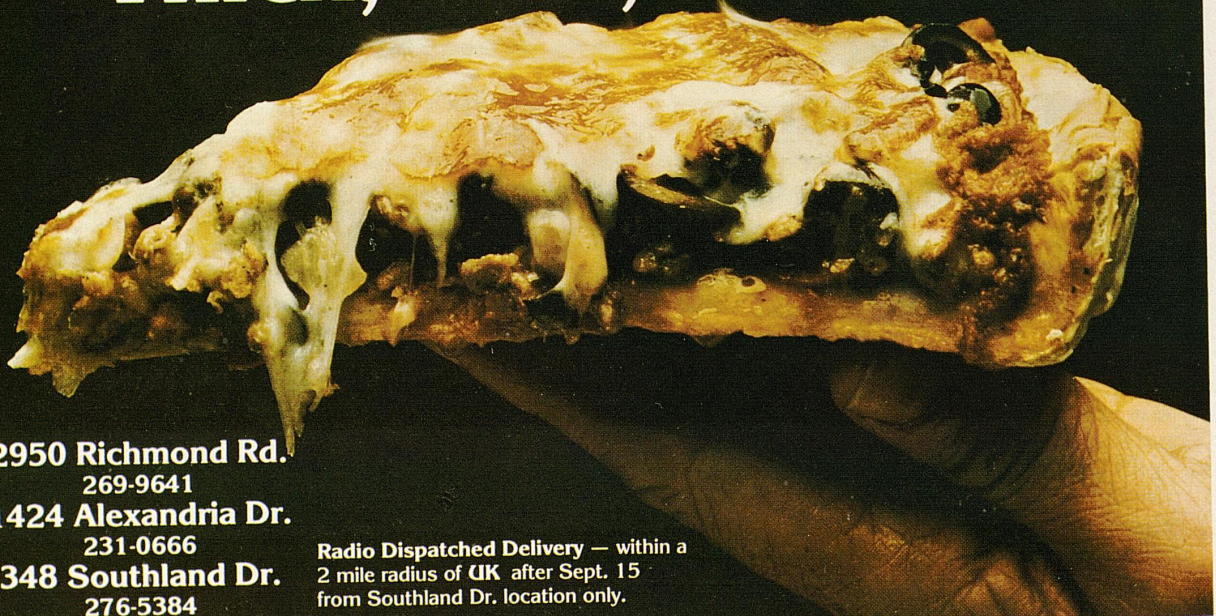
At Ashland Oil, we're depending on one of America's greatest natural resources—new technology from our innovative research team.





© Miller Brewing Co., Milw., Wis.

# Godfather's Pizza Thick, Rich, Dee-lish



2950 Richmond Rd.  
269-9641  
1424 Alexandria Dr.  
231-0666  
348 Southland Dr.  
276-5384

Radio Dispatched Delivery — within a  
2 mile radius of UK after Sept. 15  
from Southland Dr. location only.



# Administration



**OTIS A. SINGLETARY**  
University President

The University of Kentucky has become one of the major institutions of higher learning in the United States under the leadership of Dr. Otis Singletary, the eighth president of the University. His tenure has been marked by rapid growth and a commitment to excellence.

"The University, with all its problems, is still the single most important institution in the state," Dr. Singletary has said. "Its network of influence is felt throughout the state, not just in the instruction of the state's young people but in the great pattern of research, the things we are doing to improve the quality of human life and the wide range of services we are providing throughout the state.

"Contrary to popular opinion, our institutions of higher education are not operated exclusively for students, or for faculty members, or for administrators, or for trustees — or, for that matter, for all of these. Historically speaking, universities have been created and supported by our society to perform important functions for the common good of society. This is the larger meaning of the term, 'the public interest,' as it applies to institutions of higher education."

Before being named UK president in 1969, Dr. Singletary served as executive vice chancellor for academic affairs in the University of Texas system and as director of the Job Corps program for the Office of Economic Opportunity.

The Gulfport, Miss., native holds

degrees from Millsaps College and Louisiana State University. He is a nationally recognized history scholar and is the author of two books and several monographs.

In the 12 years he has been president, the University has grown to where there are now more than 23,000 students on the Lexington campus and more than 19,000 students in UK's 13 community colleges. UK has gained an international reputation in such diverse fields as medicine, business, engineering, law and agriculture. The University also is noted for its research in the fields of energy, tobacco and cancer. The Sanders-Brown Research Center on Aging is one of the first facilities of its kind.

The UK Alumni Association has recognized Dr. Singletary's special

service by presenting him its Alumni Service Award. It is an honor rarely bestowed upon a non-alumnus of the University.

Dr. Singletary is in the second year of his two-year term as president of the Southeastern Conference. As University President, he serves as chairman of the board of directors of the UK Athletic Association, the body which maintains overall policy supervision of the athletic program.

A Navy veteran of World War II and the Korean conflict, he is commander in the U. S. Naval Reserve. He and Mrs. Singletary, the former Gloria Walton, have three children: Bonnie, Scot and Kendall.

The Singletarys live at Maxwell Place, traditional home of UK presidents.

# Athletics Director



**CLIFFORD O. HAGAN**  
Director

The story of Cliff Hagan's reign as chief of the UK Athletics Department has been one of fine attendance at the two big revenue-producing sports, increased attendance in Lady Kat basketball and men's baseball, and a steady upgrading of facilities.

The University will be host to the SEC Basketball Tournament in March of next year and the NCAA Championship Finals in 1985. The UK Relays were renewed this past spring.

Hagan, who has seen and over-

seen vast improvements in all phases of the UK athletics program since returning to his alma mater as assistant athletics director in 1972, has under his command a total of 20 sports ranging from football and men's basketball in Level I, to women's basketball in Level II, and a baker's dozen sports in Level III.

He was named in 1972, assistant to Harry C. Lancaster and given the task of implementing the Blue & White Fund for 57,600-seat Commonwealth Stadium and later for Rupp Arena. Hagan replaced Lancaster as athletics director in July, 1975.

Hagan received one of his highest individual honors three years ago when he became the first University of Kentucky basketball player to be installed in the Naismith Memorial National Basketball Hall of Fame in Springfield, Mass. At UK, he played on teams that won 86 of 91 games and an NCAA championship (1951). He went on to star in the NBA with the St. Louis Hawks and in the ABA with the Dallas Chaparrals as player-coach.

He received his M.S. in education from Washington University in 1958.

# Ask me.

## Get your coaching tips on life insurance from a pro.

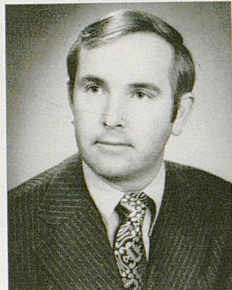
How much life insurance should you have? And what kind? Ask me, your New York Life Agent. Life insurance is my full-time career. My job is to help you meet your goal of financial security and to tell you what policies should be part of your game plan.

Ask me. What I know can help you make the right play.

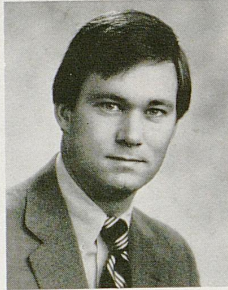
These are some of the many New York Life Agents in this area — all good people to know.



Joseph Argabrite  
Lexington



Larry Botts, C.L.U.  
Lexington



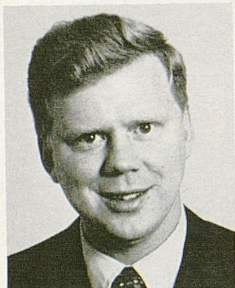
Bob Breeden  
Lexington



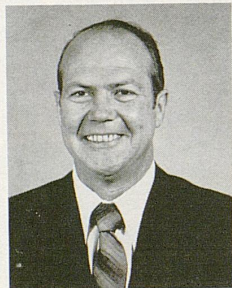
Thomas Brough, C.L.U.  
Lexington



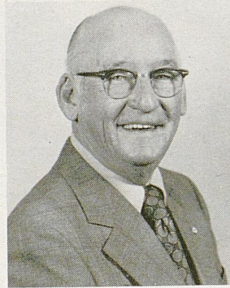
Gene Cravens, C.L.U.  
Lexington



Mike Fawbush  
London



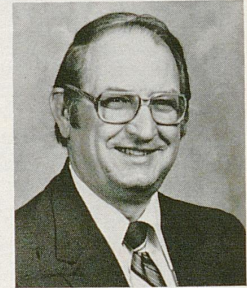
Jerry Kincaid  
Lexington



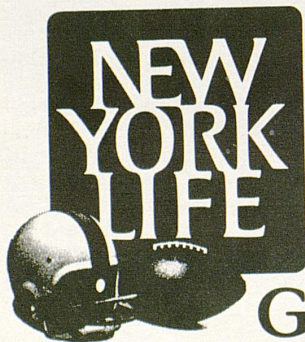
Chalmer Lindon  
Hazard



Ellen Clark Marshall  
Lexington



Tom Massengill  
Middlesboro



Peter B. Crane  
General Manager  
200 West Vine, 6A  
Lexington, Kentucky  
254-2341



George Ridings, C.L.U.  
Richmond

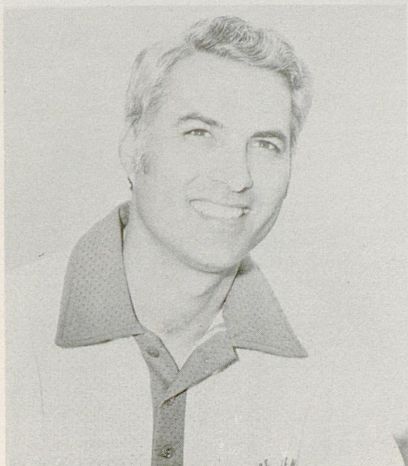
## Go ahead, ask.

New York Life Insurance Company. Life, Group and Health Insurance, Annuities, Pension Plans.

## Head Coach

# Fran Curci Enters Ninth Season At Kentucky Helm

With his second good recruiting crop in a row, Fran Curci enters his ninth year as University of Kentucky football coach with hopes of returning the Wildcats to



their fine back-to-back seasons of 1976, when they finished 8-4 and were Southeastern Conference co-champion and Peach Bowl champion, and 1977, when they finished 10-1 and were undefeated in conference play.

Curci's victory total at UK now stands at 44 (44-43-2), second only to the 60 victories registered by Paul Bryant (60-23-3, 1946-53) and ahead of the 41 by Blanton Collier (41-36-3, 1954-61).

Youthfulness, inexperience and injuries took their toll of the Wildcats last year, when four games were lost in the closing seconds, including two with no time left on the clock, en route to a 3-8 record.

During his tenure at UK, Curci has been named SEC "Coach of the Year" by both wire services—UPI in 1973 and AP in 1977—and has finished high in the national balloting (1977).

He has produced four All-Americans and three Academic All-Americans at UK, which did not have an All-American of any type during the

nine years before he came to Lexington. He also has produced 10 All-SEC players named 15 times to the honor squads.

Curci came to UK from the University of Miami, FL, where he was head coach two years. He started his career as freshman coach there in 1962 after earning All-American honors as a quarterback for the Hurricanes in 1959 and playing QB for the old Dallas Texans in the AFL.

Curci went to Tampa as head coach in 1968, putting together a 7-3 season that included victories over Mississippi State and Tulane and earned him the Florida Sports Writers Association's "Coach of the Year" award, a recognition repeated in 1970.

His 1969 team finished 8-2, while his 10-1 record in 1970 included a 31-14 triumph over Miami and brought the Tampanas the nation's No. 1 College Division ranking. Curci was runner-up for the College Division "Coach of the Year" honors.

He coached the Hurricanes in 1971 and 1972.

A native of Pittsburgh, PA, Curci played his high school football in Miami, where he lettered three years as a quarterback at Archbishop Curley High and was All-City, All-Conference, Catholic All-State and his team's Most Valuable Player.

At Miami, where he was known as the "Mite-y Magician," he parlayed intelligence and desire to become All-America as a senior in 1959 after receiving All-America honorable mention in 1957.

He set Hurricane seasonal and career marks for total offense, most passes thrown, most passes completed and most yards gained passing. He was co-holder of the record for most passes thrown.

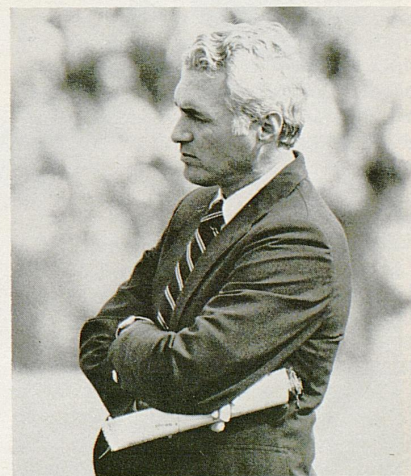
He rolled up 2,767 yards rushing and passing during his varsity

career, breaking a total offense record that had stood for more than two decades. He captained the Hurricanes his senior year and climaxed his career by engineering a stunning upset of Michigan State.

After graduation in 1960 with a degree in marketing, he played one year for the Texans and then served as a lieutenant in the Army, coaching and playing football for the Fort Eustis team, which won the National Service championship in the Missile Bowl.

Curci has been selected seven times to coach in all-star games. He assisted Bear Bryant with the South team in Tampa's first annual American Bowl game five years ago, then served as South head coach the next year. He helped Charlie McClendon of LSU and Alex Agase of Northwestern direct the East in the Coaches All-America game and has also appeared at the North-South Game, Japan Bowl, East-West Game and Hula Bowl.

He was elected to the Miami Sports Hall of Fame in 1980.




## Because you know a winner when you see one.

Whether it's fine horses or fine dining and entertainment . . . you appreciate the best. That's why your place is at the Hyatt Regency Lexington.

For a truly elegant dinner, visit our exotic Peppercorn Duck Club. Or dine beneath the trees in the Glass Garden's beautifully landscaped seven-story atrium—open for breakfast, luncheon and dinner. Delightfully different drinks, as well as all your old favorites, are served in the relaxing atmosphere of our two unique lounges—Roots and Pim's Pub.

Go with a winner . . . the Hyatt Regency Lexington.



HYATT REGENCY  LEXINGTON

AT LEXINGTON CENTER

# Assistant Coaches



Photo by Bill Straus

Kentucky coaching staff: kneeling, left to right: Mike Summers, Mark Meenach, Greg Nord, James Likins. Standing: Fran Curci, Larry Kirksey, Perry Moss, Bill Glaser, George Catavolos, Charlie Bailey, Dan Coughlin, Mike Cassity, Tom Turchetta.

## Kentucky Kickoff Spotlights:

### Charlie Bailey

The one bright spot in a dismal season for the Kentucky Wildcats has been the play of a defense that has seen much too much field time.

Much of the credit for molding this courageous group of young players must go to Assistant Head Coach Charlie Bailey. Coach Bailey saw his charges open the season without the defensive signal caller and leader Scott Schroeder whose knee operation put him out for the season. Tackles Jeff Smith and Keith Martin are only sophomores and neither had much playing time last year.

Coach Bailey came to Kentucky in 1975 and took over as Fran Curci's defensive coordinator. The 1976 Wildcats went 8-4 and featured a tenacious defense anchored by Richard Jaffe. That squad won

the Peach Bowl. The following year the Cats were 10-1.



Before coming to the Bluegrass, Coach Bailey spent three years at Rice as defensive coordinator and assistant head coach. The Poca, W. Va., native played both offensive and defensive end at the University of Tampa where he lettered four years. Among the honors he earned were being named outstanding lineman and team captain.

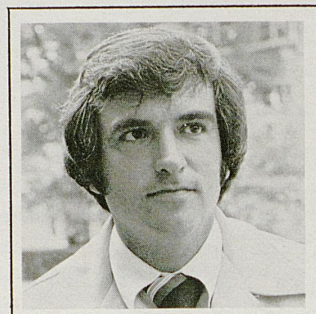
After graduating from Tampa in 1962, he coached one year each at Poca High and Brandon (Fla.) High before returning to Tampa as an assistant from 1964 to 1970. With Head Coach Curci at Tampa, the team enjoyed great success (the 1970 team was ranked No. 1 in the College Division). Coach Bailey was Curci's defensive coordinator one year at the University of Miami before moving to Rice.

# Athletics Department

Larry Ivy, who came to the University of Kentucky as director of housing in 1969, is involved primarily with the administration and management of the business operations of the Athletics Department. He helps to develop and initiate policies for accounting procedures and related financial management activities of the department also.

A native of Alabama, Ivy graduated in 1961 from Huntsville High School, where he lettered in four sports. He is a 1967 graduate of the University of Alabama and earned his MBA from Alabama in 1968.

He is married to the former Barbara Foster of Huntsville. They have one daughter, Kim. Ivy is a son of Mr. and Mrs. Jack F. Ivy of Huntsville.



**LARRY IVY**  
Assistant Director of  
Athletics for Finance

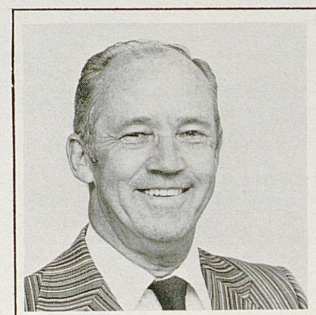
Frank Ham became assistant director of athletics soon after Cliff Hagan succeeded Harry C. Lancaster as director of athletics.

A native of Scranton, Pa., Ham came to the University in 1969 as administrative assistant to football coach John Ray, and was reassigned to the athletic director's staff in 1972.

Ham graduated from high school at Niles, Michigan and completed his undergraduate work at Olivet College. He did graduate work at Indiana University and coached high school football and track at John Adams High in South Bend. He then returned to Olivet as athletic director and head football and basketball coach.

In 1962, he became assistant to the president at Olivet, with responsibilities in public and alumni relations. He was in private business from 1956 until 1968.

He is married to the former Rosemary Woods of Niles, Michigan. They have two sons, Michael, of Raleigh, NC, and Craig, a U.S. Army Captain, and two daughters, Mrs. Andy Hunsberger of Casopolis, Michigan and Jennifer a 1978 graduate of UK.



**FRANK HAM**  
Assistant Director of Athletics



**SUE FEAMSTER**  
Assistant Director of Athletics

Sue Feamster joined the athletics association July 1, 1979 with the merger of the men's and women's programs. Feamster had been the director of women's athletics prior to her appointment as assistant director of athletics.

A native of Frankfort, she came to the University as a graduate student in 1970, was named assistant director of campus recreation in 1972 and director of women's athletics in 1974.

Feamster graduated from Franklin County High School where she was an outstanding tennis player and athlete. While in college she earned letters in tennis, field hockey, basketball and track from Indiana University and Kentucky State University, where she earned her B.S. degree and graduated with honors.

A former teacher and counselor, Feamster is a daughter of Mr. and Mrs. Robert F. Feamster of Frankfort.



**BOB BRADLEY**  
Assistant Director for  
Academic Affairs

Bob is a native of New York who earned his M.A. at UK before serving as coordinator of counseling and head of finances at the Lexington Technical Institute. He joined the Athletics Association last year. Bob earned letters in football, baseball, basketball and track at Hornell High School (NY) and played football at Salem College in West Virginia.

# We Make Over 500 Touchdowns Every Saturday.

Over the past few years, Piedmont Airlines has gained a lot of new ground.

Today, our routes cover 15 of the country's 25 largest metropolitan areas.

And no one flies you to more mideastern U.S. cities than Piedmont does.

But it's not just where we can fly you, but how, that has helped to put Piedmont in a league all by itself.

For example, if you're going for a long haul, our Bypass Strategy helps you avoid the

hassles of connections in big, busy airports.

If you're making a short run, Piedmont can give you nonstops or directs to places other airlines fly over.

We can even help you tackle the cost of flying with a variety of discount fares that take off up to 50%.

So, if you'd like to make your next touchdown a lot easier, come take off with Piedmont.



## Piedmont. The Up-And-Coming Airline.

Call your travel agent or call Piedmont at 254-7351  
in Lexington and Frankfurt.

# It's the place for me!



*Fayette Mall is the place for your Shopping needs. Seventy-five great stores including Sears, Shillitos and Stewarts provide you with the latest in fashions, and the best in variety. So come on, join your friends at Fayette Mall, and satisfy all your shopping needs in one convenient stop. Come see why others say "Fayette Mall.....It's The Place For Me!"*

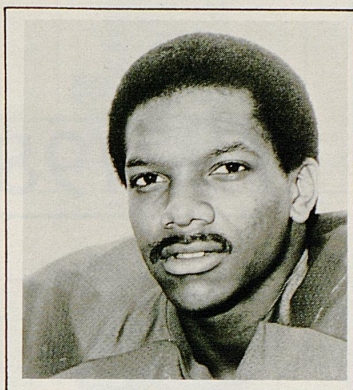


Nicholasville Rd. just south of New Circle  
Shopping Hours Daily 10-9:00 pm Sunday 1-5:00 pm

**FAYETTE MALL**



**Best  
Offensive  
Player**



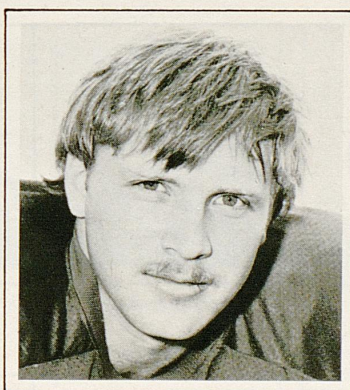
**Choo Choo Lee  
Running Back**

Lawrence "Choo Choo" Lee had the best day running of any Wildcat this season last week against Florida. Choo Choo carried the ball 22 times and gained 95 yards as Coach Fran Curci installed the I formation in hopes of reviving the Cats' ground game. The swift Paducah product has returned to the starting lineup and is a bright hope for next season.

**Wendy's**<sup>®</sup>

**presents the players  
of the week!**

**Best  
Defensive  
Player**



**Andy Molls  
Free Safety**

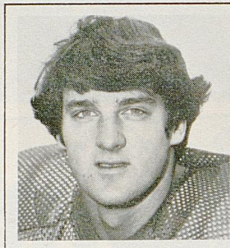
For two games in a row, Andy Molls graded out as the Wildcats' top defensive player. Against Vanderbilt two weeks ago, Andy was superb. He had six punt returns for 195 yards. Last week against Florida, the junior from Parma Heights, Ohio, had ten solo tackles and four assists in a losing effort. Molls has been the steady free safety in a defensive secondary that is rated tops in the SEC against the pass.

**Visit any of the 7 Wendy's  
in the Lexington Area.**

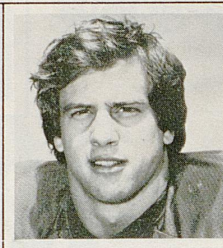
**AIN'T NO REASON TO GO ANYPLACE ELSE.™**

# KENTUCKY

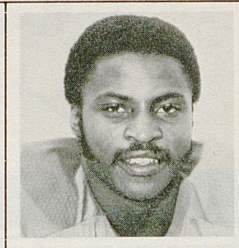
## The 1981 Wildcats



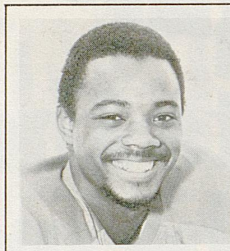
3 Tom Griggs



4 Tom Petty



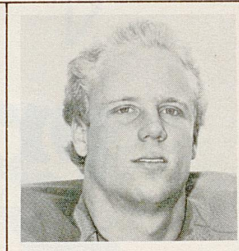
5 Eddie Simmons



6 Craig Hamilton



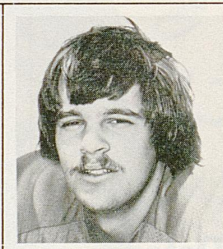
7 Terry Henry



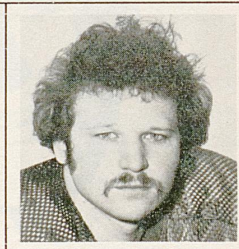
9 Ty Richmond



12 Randy Jenkins



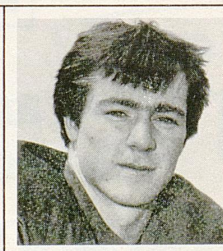
15 Tom Boyle



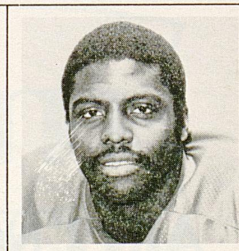
17 Rick Strein



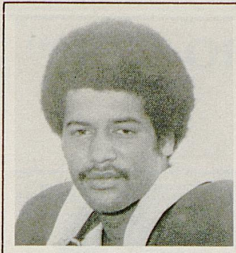
18 Andy Molls



20 Rick Massie



22 Kerry Baird



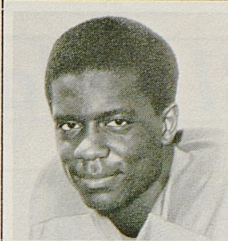
23 John Gay



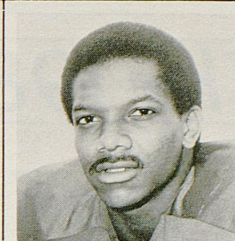
24 Gordon Jackson



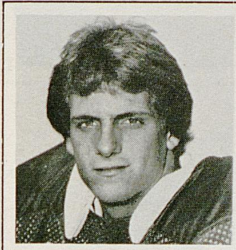
25 Pete Venable



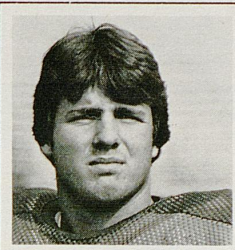
27 John Jones



28 Lawrence Lee



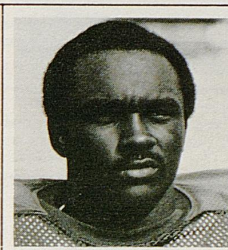
29 David Meers



31 Tom Wheary



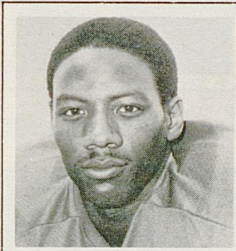
32 Rod Francis



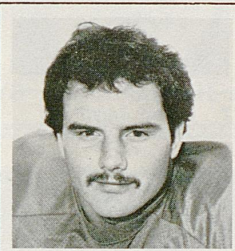
33 George Adams



34 Henry Parks



35 Ben Johnson



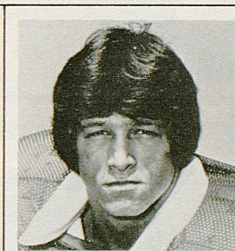
37 Greg Long



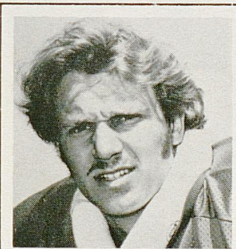
38 Joe Freeman



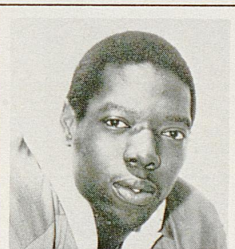
40 Shawn Donigan



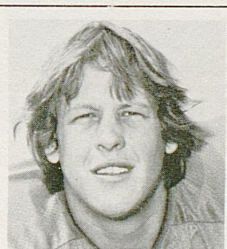
43 Glenn Amerson



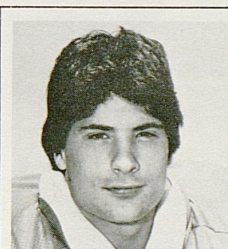
44 Don Roe



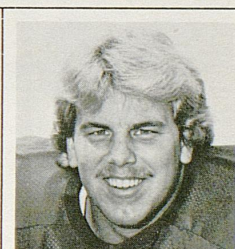
45 Richard Abraham



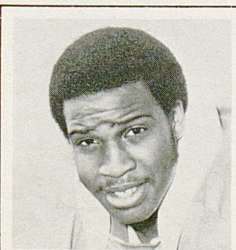
48 Cam Jacobs



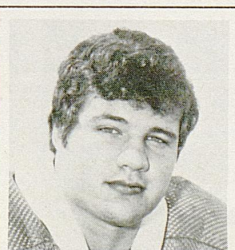
49 Kevin McClelland



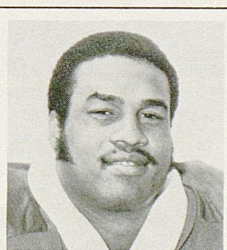
50 John Maddox



53 Don Fielder



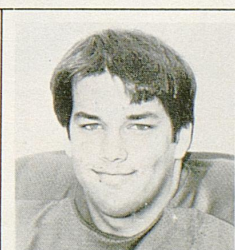
55 Chris FERENCE



57 Effley Brooks



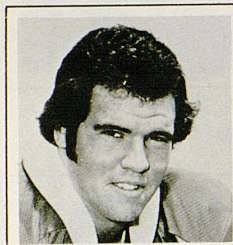
59 John Girmsley



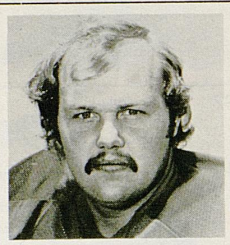
61 Ron Bojalad



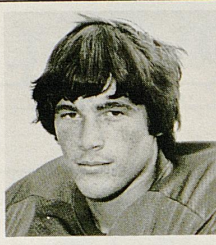
# The 1981 Wildcats



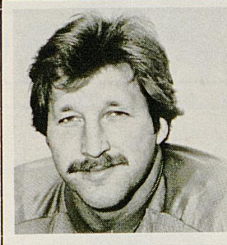
64 Don Corbin



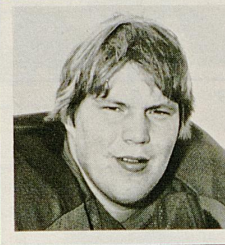
65 Steve Hricenak



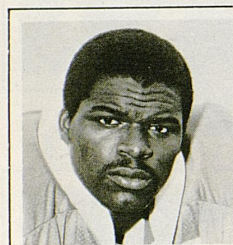
68 Chris Thomas



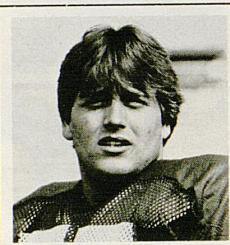
69 David Bond



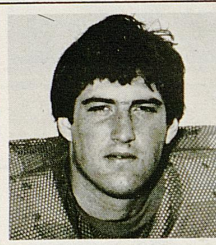
70 Keith Martin



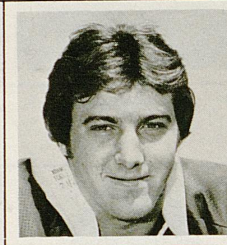
71 Don Portis



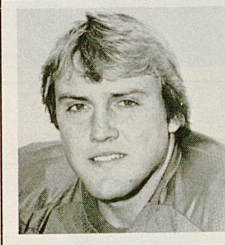
75 Doug Williams



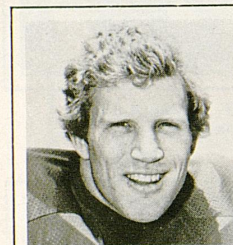
76 Steve Williams



77 Gerald Smyth



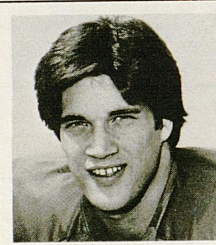
79 Jeff Smith



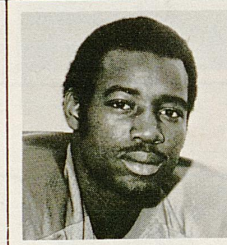
80 Jim Campbell



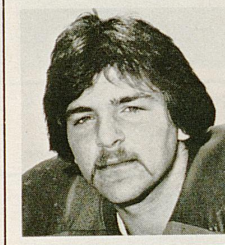
83 James Bowen



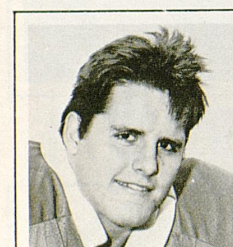
85 Robb Mangas



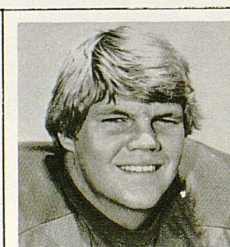
86 Allan Watson



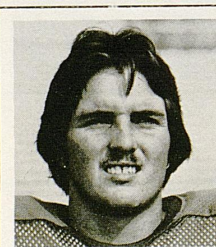
87 Chris Dorazio



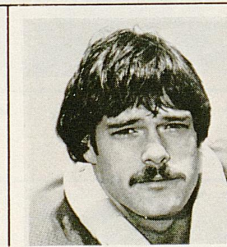
90 Jake Drug



91 Todd Shadowen



93 John McVeigh



94 Dave Lyons



95 William Burse

**"STATE OF THE ART" Dining**

*Casa Executiva*

(EXECUTIVE HOUSE)



*Relax and enjoy . . .*

Simply put, we offer the ultimate in elegant dining . . . from tantalizing appetizers to a provocative offering of unusual American, Continental or Italian dishes, complemented by an incomparable selection of choice vintage wines and cocktails.

At Casa Executiva, we invite you to savor selections from a menu which is a cut above the rest . . . including veal, lamb, quail, lobster, scampi, frog legs, steaks, beef Wellington, dover sole and pasta (fettucine Alfredo, tortellini, cavatelli, mannicotti, canelloni, etc.).

Then the finish . . . a delectable selection from our pastry cart or a flaming dessert (bananas Foster, cherries jubilee, baked alaska, etc.). Experience all of this in the elegant atmosphere of a restored 18th century mansion.

We're the ONLY Lexington gourmet restaurant with full tableside service.

Casa Executiva. ASK ANYBODY!


*...the ultimate dining experience*

\*OPEN FOR DINNER ONLY    \*ALL MAJOR CREDIT CARDS HONORED

\*FREE PARKING    \*RESERVATIONS-254-6263  
253-1174

*"Casa Executiva" located at 270 South Limestone (Limestone at Maxwell)*

Standing:  
 Alleged  
 Brent's Prince  
 Fluorescent Light  
 French Colonial  
 George Navonod  
 Inverness Drive  
 Lines of Power  
 Monteverdi  
 Nureyev  
 Shecky Greene  
 What Luck

**Walmac Int'l.**  
**Warnerton**   
 ASSOCIATED FARMS  
 Inquiries to John T. E. Jones Jr.  
 3395 Paris Pike Lexington Ky. 40511  
 Phone 606-299-0173



## Defense Receives Good Marks

By Marc S. Kidd

This afternoon marks the end of a long and tough season for Kentucky. It has been an educational experience, far tougher than any mid-term or final for the young, inexperienced Wildcats.

With the exception of the VPI and Florida games, the play of the defense has been exceptional, keeping Kentucky close in each contest. Assistant Head Coach Charlie Bailey explains: "At the beginning of the season, we were unsure on some particular people, but so far some of the guys have played better than we anticipated."

The season started with the defense counting on Scott Schroeder, who led the team with 82 solo tackles and 62 assists last year, and senior defensive back, Venus Meaux. However, Schroeder injur-

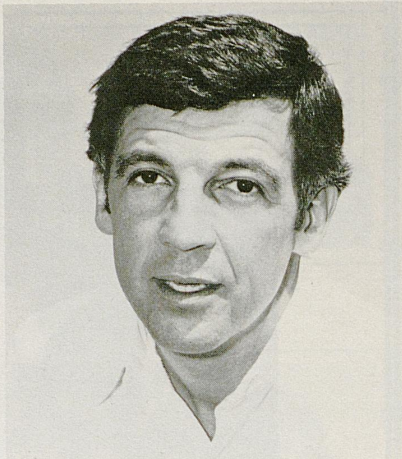
ed his knee before the season started and Meaux went down a few weeks later.

Kentucky was forced to move some people around early in the season to compensate for injuries. Playing the 5-2 or Oklahoma defensive scheme places a large burden on the noseguard. He's the guy that makes the defense go. Effley Brooks has been hurt but still is the fourth or fifth leading tackler on the team, according to Bailey. Brooks was injured in the Clemson game and has not been at full speed since.

Looking at the UK defense, it breaks down as follows: the defensive ends have been Don Roe, Don Fielder and David Lyons. "These three guys have basically played all year," Bailey continued. "Fielder is big and strong and has played great at times." Roe and Lyons

have alternated at the other spot.

The defensive tackles have been manned by two sophomores, Keith Martin and Jeff Smith with James Bowen seeing some action. Coach Bailey feels that Martin has



Bill Glaser

done an outstanding job. The ends are coached by Bill Glaser, a native Kentuckian, who has done a super job.

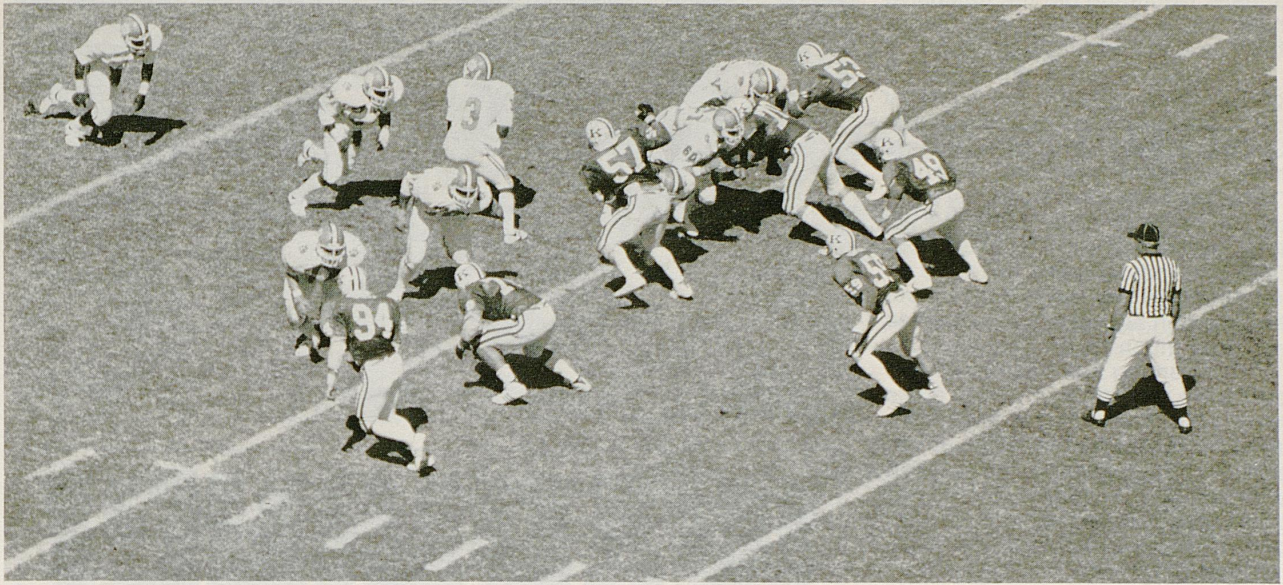
John McVeigh has been filling in for Effley Brooks at the noseguard spot. And he has played hard, but



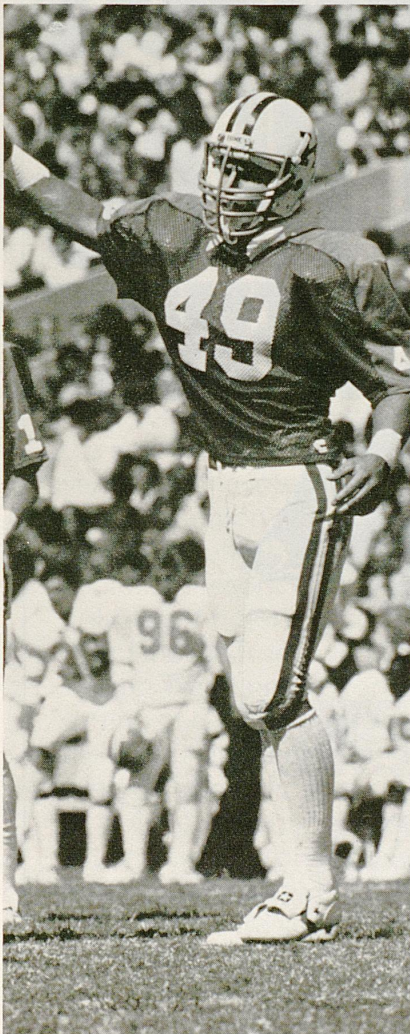
Don Roe plugs the gap

keep in mind that McVeigh weighs 205 pounds and has had to play people twenty to thirty pounds heavier.

Moving to the linebackers, Kentucky has played only two people,



*Kentucky's 5-2 defense reacts against Clemson*



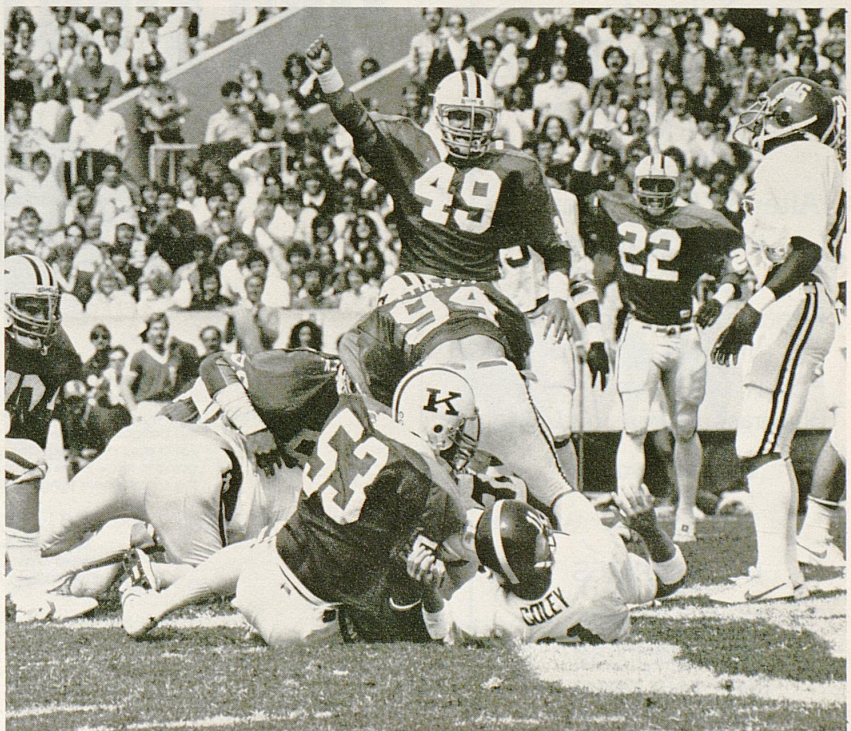
*Linebacker Kevin McClelland*

Kevin McClelland and John Grimsley. "I think John Grimsley has done an outstanding job all year" stated Bailey. "Kevin has not been as consistent as he can be. We're very young at linebacker but we have a chance to be very good in the future."

The defense has been most constant in the secondary. According to Bailey, "When you start talk-

ing about the secondary the guy you gotta talk about is Andy Molls." Molls is a 5-10, 186 pound Junior who missed three games last year as a result of a broken foot. "Andy's a hitter and he really enjoys the game of football."

Greg Long has also been a strong performer in the Kentucky secondary along with Kerry Baird who may be the best all-around



*The defense stacks up Alabama*

athlete. Rounding out the defensive backfield is Tom Petty who Bailey feels is a kid with a lotta guts.

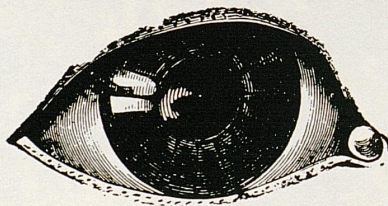
The special teams are made up of defensive players for the most part and the coordinator is Coach Glaser. Glaser said punt returns have been a pleasant surprise. "This year we have been very fortunate to have Andy Molls to return punts for us," Glaser continued. "Andy doesn't have 4.6 or 4.5 speed in the forty, but you put the pads on and with his quickness he plays much faster than he is.

"Our punting has been solid and our extra points and field goals have also been very good. We spend a great deal of time on our special teams during the season and before the season starts, we practiced three times a day with one of those strictly for the kicking game.

Kentucky's defense has gained valuable experience this season, some players having played as much as 100 plays in a game. The tests will be completed this afternoon and when the grades are posted, you'll find the defense has passed.



**WARNING!**  
**DO NOT READ**  
**THIS ADVERTISEMENT.**



You must be one of those devil-may-care fun seekers. Why else would you read this ad? Just for that, after this ballgame, we're going to sell you draft beer for 25¢ a mug or a great bar drink for \$1.50. And we're going to throw in the best music and crowd in town. At the place where things happen... the Library.

**LIBRARY**

Woodland at Euclid Avenues  
 The Place Where Things Happen.

**COUPON**

**SECOND ANNUAL  
 FALL FLING**

After KY-TENN Game  
 At The Marriott  
 6-11 p.m.  
 Featuring The Trendells

Sponsored  
 by  
 Bluegrass Jr. Woman's Club

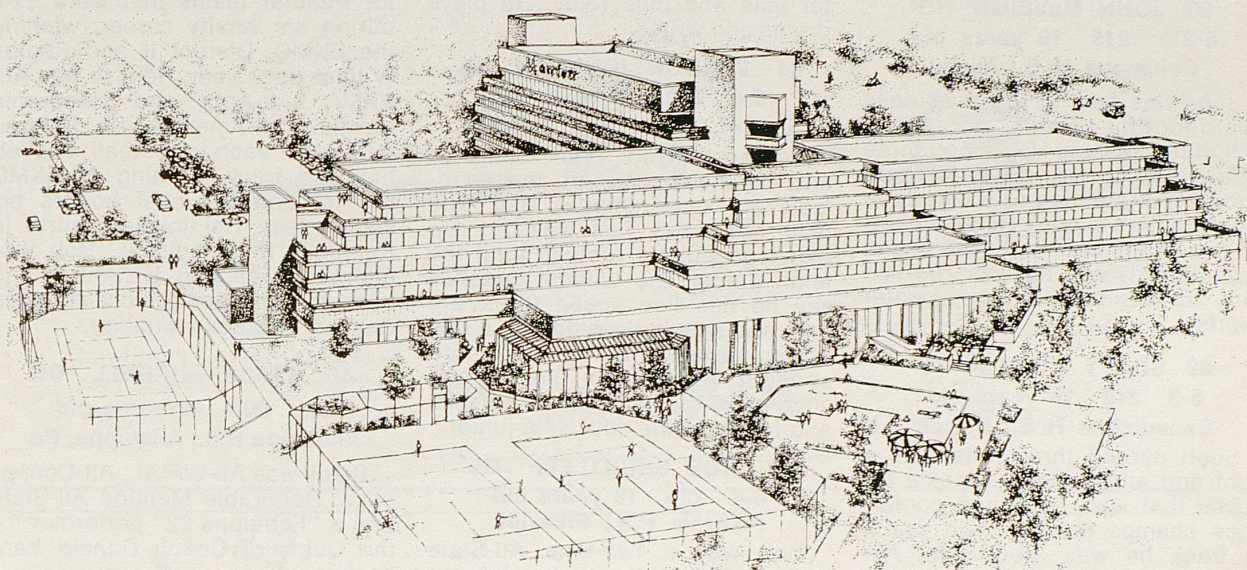
Lee Sherwood  
 WVLK  
 RAFFLE  
 DOOR PRIZES

THIS COUPON  
 WORTH \$2.50  
 OFF THE PRICE  
 OF ONE TICKET



# "An authentic Kentucky bluegrass retreat is opening right in your own backyard."

Bill Marriott, President  
Marriott Corporation



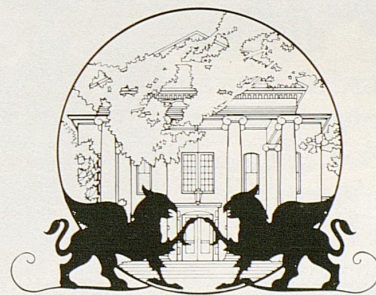
Tucked amid Kentucky's prized horse farms, the new Marriott Resort at Griffin Gate is convenient to the interstate highway system, downtown Lexington and Keeneland Race Track.

Marriott's bluegrass retreat is also a self-contained resort. Our 18-hole golf course is the only resort-hotel course in the area.

Choose from two restaurants for lunch and dinner: Traditional favorites in an atrium garden setting at **Griffin's Garden**, and **Pegasus**, where the chef is applauded for his dramatic veal and seafood originals.

Give us your next business or social guest list and we'll arrange the whole affair. Even if the number snowballs to over 500 people, you can be sure your guests will leave very impressed.

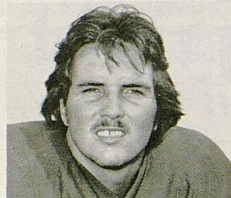
When Marriott does it, they do it right.  
For information call (606) 231-5100.



*Lexington Marriott Resort*  
*Griffin Gate*

1800 Newtown Pike,  
Lexington, Kentucky 40512  
(606) 231-5100

# Freshmen Profiles



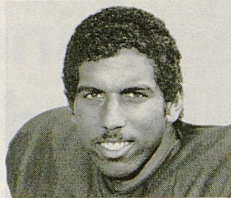
**JOHN McVEIGH**

**93 JOHN McVEIGH NG**  
6-2½ 215 19 years old  
Columbus H. S., Miami

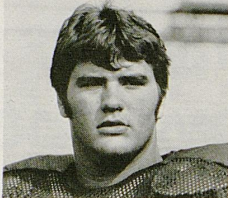
John has had to fill in at nose guard for Effley Brooks the second half of the season. He earned three letters in football and was All-State and HM All-America as a defensive tackle in high school. He also earned two letters each in baseball and basketball where he was HM All-City at center. He likes water sports.

**89 SCOTT GOGGIN TE**  
6-3 210 18 years old  
Benedictine H. S., Detroit

Scott earned three letters as a tight end and defensive tackle for teams that were 21-6 and conference champs the past two years. In track he was All-League, All-Catholic and All-State in the quar-



**SCOTT GOGGIN**



**BOB SHURTLEFF**

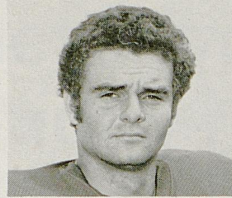
ter mile and mile relay. He plays drums and writes.

**84 VERNON JOHNSON OL**  
6-4 220 18 years old  
Laurel County H. S., London

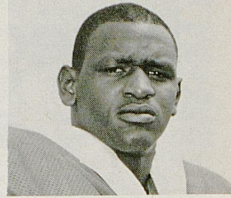
Vernon played both offensive and defensive line for the Cardinals of Coach Charles Bell. The team was 8-3 last season. He didn't go out for football until the tenth grade. The Wildcat coaches say he has fine speed for a big man and should develop into a fine player when he gains more strength. A trackman, he finished second in the state in the discus and fourth in the shot as a junior.

**51 BOB SHURTLEFF OL**  
6-4 230 18 years old  
Pikeville H. S., Pikeville

Bob was a two-time All-State tackle on both offense and defense



**VERNON JOHNSON**



**STACY BURRELL**

for Panther teams that were 52-8 during his varsity career, winning the EKMC, District II and Region IV titles each year. He also was All-EKMC, All-Area and Honorable Mention All-America. He lettered four years each in football, basketball and track, earning All-EKMC District and Regional honors his senior year. He finished fourth in Kentucky in the discus. Bob was alternating captain in football and basketball his senior year and also did the Panther's punting.

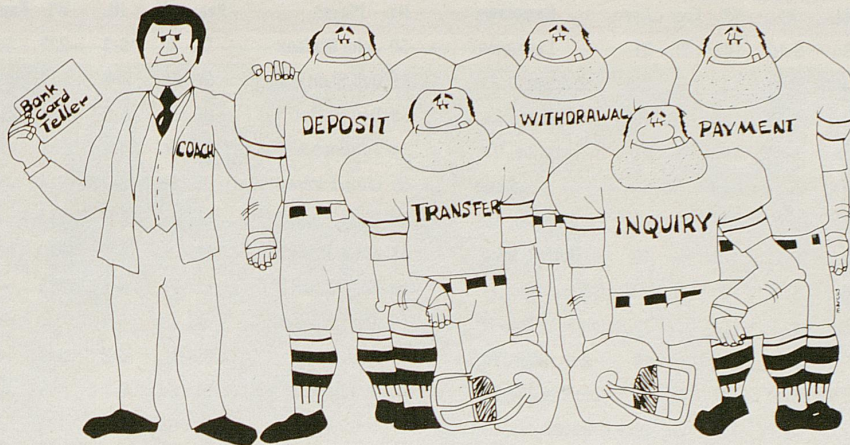
**47 STACY BURRELL DE**  
6-1 205 18 years old  
Aliquippa H. S., Aliquippa, Pa.

Stacy was All-WPIAL, All-Conference, Honorable Mention All-State and a "Fabulous 22" performer for the Quips of Coach Donald Yanness.



**FRESHMAN GAME DAY HOSTESSES** — Front row, left to right: Mary Ann Perkins, Brenda Rainey, Ronda Arnold. Back row: Susan Johnson, Sandy Little, Christy Poole, Karen McDonald, Tracy Baseheart, Monica Reed, Gina Marshnik, Melaine Steffen, Dawn Adams.

## Big Blue Fans... We've Got You Covered!



Whether you celebrate before or after the game... or both...if you need additional cash, Bank of Commerce and Trust has two convenient Bank Card Teller locations...Our Ashland Branch on Euclid Avenue near campus and Commonwealth Stadium or Rupp

Arena...or our Nicholasville Road Branch, handy to New Circle Road and in-coming game traffic... Wherever your plans lead you...before or after the game, you can depend on the Bank Card Teller at Bank of Commerce and Trust... We've got you covered!

Get Involved With

BANK OF COMMERCE  
and Trust Co.



Federal Deposit Insurance Corporation • Equal Opportunity Lender • Member Federal Reserve System



## Attention: Big Blue Fans We've Got The Spirit!

For dining and spirits, T. W. Lee's can't be beat... Whether you're headed for the game... or celebrating afterwards, meet your friends at T. W. Lee's

Our lineup features a variety of specialty foods, including our famous ribs... plus seafood, salads, sandwiches, burgers, and desserts.

Or enjoy an expertly mixed drink from our lounge... Win or lose at the game, no one loses at T. W. Lee's... We've got the spirit.

# T.W. LEE'S

## The Place For Ribs

Richmond at New Circle Roads

## 1981 UNIVERSITY OF KENTUCKY FOOTBALL ROSTER

No.	Player	Pos.	Cl.	Ht.	Wt.	Exp.	Age	Hometown	No.	Player	Pos.	Cl.	Ht.	Wt.	Exp.	Age	Hometown
3	Tom Griggs	PK	Sr.	5-10	180	2L	21	Lexington	50	John Maddox	OL	Jr.	6-3	223	Sq	21	Parkersburg, W.V.
4	Tom Petty	DB	Jr.	5-11	187	2L	20	Indianapolis, In.	51	Bob Shurtleff	OL	Fr.	6-4	230	—	18	Pikeville
6	Craig Hamilton	DB	Jr.	5-10	185	TR	20	Altadena, Ca.	53	Don Fielder	DE	Sr.	6-3	227	1L	21	Garden Grove, Ca.
7	Terry Henry	QB-HB	Jr.	5-11	197	2L	20	Knoxville, Tn.	54	Terrence Williams	OL	Fr.	6-4	235	—	18	Chicago, Ill.
8	Joe Phillips	WR	Fr.	5-11	185	—	18	Franklin	55	Chris Ference	DL	So.	6-3	214	JV	19	Hubbard, Oh.
9	Ty Richmond	DB	So.	6-0	197	1L	19	Amarillo, Tx.	56	Frank Hare	LB	Fr.	6-4	218	—	18	Lexington
11	Carmichael Caldwell	RB	Fr.	5-11	178	—	18	Detroit, Mich.	57	Effley Brooks	DL	Jr.	6-1	230	2L	21	Columbus, Oh.
12	Randy Jenkins	QB	So.	6-1	190	1L	20	Stickleyville, Va.	58	Tony Czack	LB	Fr.	6-2	215	—	18	Parma, Oh.
15	Tom Boyle	QB	So.	6-2	193	JV	19	Satellite Beach, Fl.	59	John Grimsley	DB	So.	6-1	200	JV	19	Canton, Oh.
16	Doug Martin	QB	Fr.	6-1	180	—	18	Oak Ridge, Tn.	60	Mike Moore	OL	Fr.	6-3	230	—	18	Louisville
17	Rick Strein	PK	Sr.	5-11	207	1L	22	Montoursville, Pa.	61	Ron Bojalad	DL	So.	6-2	235	JV	19	Dubois, Pa.
18	Andy Molls	DB	Jr.	5-10	186	2L	20	Parma Heights, Oh.	63	Jerry Klein	OL	So.	6-1	220	—	20	Elsmere
19	Steve Boeckmann	QB	Fr.	6-3	215	—	18	Cincinnati, Oh.	64	Don Corbin	OL	So.	6-5	250	—	19	Miami, Fl.
20	Rick Massie	WR	So.	6-1	185	Sq	19	Paris	65	Steve Hricenak	OL	Sr.	6-1	230	1L	21	Clarks Summit, Pa
22	Kerry Baird	DB	So.	6-0	185	1L	19	Franklin	66	Ken Pietrowiak	LB	Fr.	6-3	205	—	18	Grafton, Wis.
23	John Gay	RB	Fr.	6-0	190	—	18	Monroeville, Pa.	67	Bruce Bozick	OL	Fr.	6-4	240	—	18	Mt. Lebanon, Pa.
24	Gordon Jackson	DB	So.	5-11	180	JV	20	Etowah, Tn.	68	Chris Thomas	OL	So.	6-4	225	JV	19	Peru, In.
25	Pete Venable	OB	So.	6-0	192	1L	21	Somerset	69	David Bond	OL	Sr.	6-2	245	1L	22	Trenton, Oh.
26	Paul Calhoun	DB	Fr.	6-3	180	—	17	Louisville	70	Keith Martin	DT	So.	6-2	232	Sq	19	Owensboro
27	John Jones	DB	So.	6-3	197	JV	18	Marion, In.	71	Don Portis	DL	Jr.	6-3	243	JV	20	Louisville
28	Lawrence Lee	OB	So.	5-11	202	JV	19	Paducah	72	Richard Jordan	DE	Fr.	6-5	240	—	19	Portsmouth, Oh.
29	David Meers	DB	Sr.	6-1	200	1L	21	Louisville	75	Doug Williams	OT	Fr.	6-6	265	—	18	Cincinnati, Oh.
30	Oliver White	RB	Fr.	6-2	198	—	17	Barbourville	76	Steve Williams	OL	Jr.	6-5	253	2L	22	Lexington
31	Tom Wheary	RB	Fr.	5-9	175	—	18	Columbus, Oh.	77	Gerald Smyth	OL	Jr.	6-4	250	2L	20	Englewood, Oh.
32	Rod Francis	OB	Jr.	6-0	206	1L	20	Louisville	78	Dan McMillan	DL	Fr.	6-5	218	—	18	Louisville
33	George Adams	DB	Fr.	6-2	197	—	18	Lexington	79	Jeff Smith	DT	So.	6-3	231	Sq	19	Springfield
34	Henry Parks	OB	Sr.	6-0	175	2L	23	Harrodsburg	80	Jim Campbell	TE	Sr.	6-3	224	3L	21	Louisville
35	Ben Johnson	DB	Jr.	5-11	196	1L	22	Hampton, Va.	81	Steve Liakos	RB	Fr.	6-1	170	—	18	Clayton, Oh.
36	Willie Branham	LB	Fr.	6-2	230	—	18	Louisville	82	Tom Richey	DL	Fr.	6-4	232	—	18	Mentor, Oh.
37	Greg Long	DB	Sr.	6-0	190	2L	22	Lexington	83	James Bowen	DT	So.	6-2	230	1L	20	Louisville
38	Joe Freeman	LB	Sr.	5-9	205	2L	22	Lexington	84	Vernon Johnson	OL	Fr.	6-4	220	—	18	London
40	Shawn Donigan	OB	Jr.	6-0	213	2L	21	Louisville	85	Robb Mangas	TE	Jr.	6-2	213	1L	21	Toledo, Oh.
41	Curtis Cochran	RB	Fr.	6-0	215	—	19	Owenton	87	Chris Dorazio	LB	So.	6-2	205	—	18	Houston, Pa.
43	Glenn Amerson	LB	Jr.	6-1	216	Sq	20	Satellite Beach, Fl.	89	Scott Goggin	TE	Fr.	6-3	210	—	18	Detroit, Mich.
44	Don Roe	DE	Jr.	6-3	205	1L	21	Smithfield, Oh.	90	Jake Drug	DL	Jr.	6-1	224	JV	20	Ontario, Can.
45	Richard Abraham	FB	Jr.	6-3	230	1L	21	Paducah	91	Todd Shadowen	TE	Jr.	6-4	216	1L	22	Hanson
46	Phillip Laws	LB	Fr.	5-11	215	—	18	Chicago, Ill.	92	Tim McDonald	NG	Fr.	6-1	230	—	18	Cocoa, Fl.
47	Stacy Burrell	DE	Fr.	6-1	205	—	18	Aliquippa, Pa.	93	John McVeigh	DL	Fr.	6-3	215	—	19	Miami, Fl.
48	Cam Jacobs	DE	So.	6-3	210	Sq	19	Coral Gables, Fl.	94	Dave Lyons	DE	Jr.	6-3	202	1L	21	Pikeville
49	Kevin McClelland	LB	So.	6-2	200	1L	19	Massillon, Oh.	95	William Burse	DL	So.	6-3	220	JV	20	Hopkinsville

OFFICIALS: Referee, Cook; Umpire, P. T. Williams; Linesman, Stephenson; Line Judge, Dudley; Field Judge, Fleming; Back Judge, Teas; E. C. O., Anderson.

# CHEVY CAVALIER THE ESCAPE HATCH



## *Escape to where you long to be.*

Here's the kind of engineering designed to take you miles away from the middle of the road. The 1982 Cavalier Hatchback. A brand-new car that owes its creation to innovation. Not imitation.

## *Escape with the goods.*

Reclining front seats, power brakes, side and rear window defoggers and a remote hatch release (quite a remote feature on ordinary hatchbacks) combine with 38 other standard features to make the '82 Cavalier the most complete new car we've ever introduced.

On the technical side, innovations in front-wheel drive, aerodynamic design and operating efficiency help add

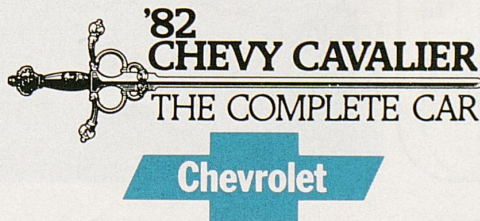
up to 43 Est. Highway/26 EPA Est. MPG.\* And engine buffs will be interested to know Cavalier's standard 1.8 Liter, 4-cylinder engine actually delivers more horsepower per liter than some highly regarded V8s.

## *Plan your escape now.*

Your Chevy dealer can help put your escape plan in motion, starting with a test drive. Get inside. Drive it around the block. Then all that's left to do is to decide whether you want to buy or lease a new 1982 Cavalier. Whichever you choose, one thing's for sure:

You won't have any trouble at all adjusting to your new freedom.

\*Use estimated MPG for comparisons. Your mileage may differ depending on speed, distance, weather. Actual highway mileage lower. Chevrolets are equipped with GM-built engines produced by various divisions. See your dealer for details.



# You know who the winners are. T

## WHEN KENTUCKY HAS THE BALL

### WILDCAT OFFENSE

88	ALLAN WATSON.....	SE
77	GERALD SMYTH.....	LT
69	DAVE BOND.....	LG
65	STEVE HRICENAK.....	C
75	DOUG WILLIAMS.....	RG
64	DON CORBIN.....	RT
80	JIM CAMPBELL.....	TE
23	JOHN GAY.....	RB
28	LAWRENCE LEE.....	RB
15	TOM BOYLE.....	QB
20	RICK MASSIE.....	WR

### VOLUNTEER DEFENSE

84	BRIAN INGRAM.....	LE
98	MARK STUDAWAY.....	LT
68	LEONARD JACKSON.....	MG
92	REGGIE WHITE.....	RT
77	CHRIS WAMPLER.....	RE
93	MIKE L. COFER.....	RLB
47	LEMONT HOLT JEFFERS.....	LLB
19	CARLTON PEOPLES.....	CB
1	LEE JENKINS.....	CB
23	DARYL HARPER.....	SS
40	BILL BATES.....	FS

### THE WILDCATS

3	Griggs.....	PK	50	Maddox.....	OL
4	Petty.....	DB	51	Shurtleff.....	OL
6	Hamilton.....	DB	53	Fielder.....	DE
7	Henry.....	OB	54	Williams.....	OL
8	Phillips.....	DB	55	Ference.....	DL
9	Richmond.....	DB	56	Hare.....	LB
11	Caldwell.....	RB	57	Brooks.....	DL
12	Jenkins.....	QB	58	Czack.....	LB
15	Boyle.....	QB	59	Grimsley.....	DB
16	Martin.....	QB	60	Moore.....	OL
17	Strein.....	PK	61	Bojalad.....	DL
18	Molls.....	PK	63	Klein.....	DL
19	Boeckmann.....	QB	64	Corbin.....	OL
20	Massie.....	WR	65	Hricenak.....	OL
22	Baird.....	DB	66	Pietrowiak.....	LB
23	Gay.....	RB	67	Bozick.....	OL
24	Jackson.....	DB	68	Thomas.....	OL
25	Venable.....	OB	69	Bond.....	OL
26	Calhoun.....	DB	70	Martin.....	DT
27	Jones.....	DB	71	Portis.....	DL
28	Lee.....	OB	72	Jordan.....	DE
29	Meers.....	DB	75	Williams.....	OT
30	White.....	RB	76	Williams.....	OL
31	Wheary.....	RB	77	Smyth.....	OL
32	Francis.....	OB	78	McMillan.....	DL
33	Adams.....	RB	79	Smith.....	DT
34	Parks.....	OB	80	Campbell.....	TE
35	Johnson.....	DB	81	Liakos.....	RB
36	Branham.....	LB	82	Richey.....	DL
37	Long.....	DB	83	Bowen.....	DT
38	Freeman.....	LB	84	Johnson.....	OL
40	Donigan.....	OB	85	Manges.....	TE
41	Cochran.....	RB	87	Dorazio.....	LB
43	Amerson.....	LB	89	Goggin.....	TE
44	Roe.....	DE	90	Drug.....	DL
45	Abraham.....	FB	91	Shadown.....	TE
46	Laws.....	LB	92	McDonald.....	NG
47	Burrell.....	DE	93	McVeigh.....	DL
48	Jacobs.....	DE	94	Lyons.....	DE
49	McClelland.....	LB	95	Burse.....	DE



"Coca-Cola" and "Coke" are registered trade-marks which identify the same

**Bluegrass Coca-Cola**

re. They're the ones with smiles!



## WHEN TENNESSEE HAS THE BALL

### VOLUNTEER OFFENSE

88	MIKE MILLER	SE
63	JANI TRUPOVNIKS	LT
62	DAVID JAMES	LG
73	LEE NORTH	C
67	BILL MAYO	RG
72	JOHN MATTHEWS	RT
80	MIKE E. COFER	TE
16	STEVE ALATORRE	QB
28	ANTHONY HANCOCK	WB
31	DOUG FURNAS	FB
34	JAMES BERRY	TB

### WILDCAT DEFENSE

94	DAVE LYONS	RE
70	KEITH MARTIN	RT
59	JOHN GRIMSLEY	LB
93	JOHN McVEIGH	NG
49	KEVIN McCLELLEND	LB
79	JEFF SMITH	LT
53	DON FIELDER	LE
22	KERRY BAIRD	DB
37	GREG LONG	SS
18	ANDY MOLLS	FS
4	TOM PETTY	DB

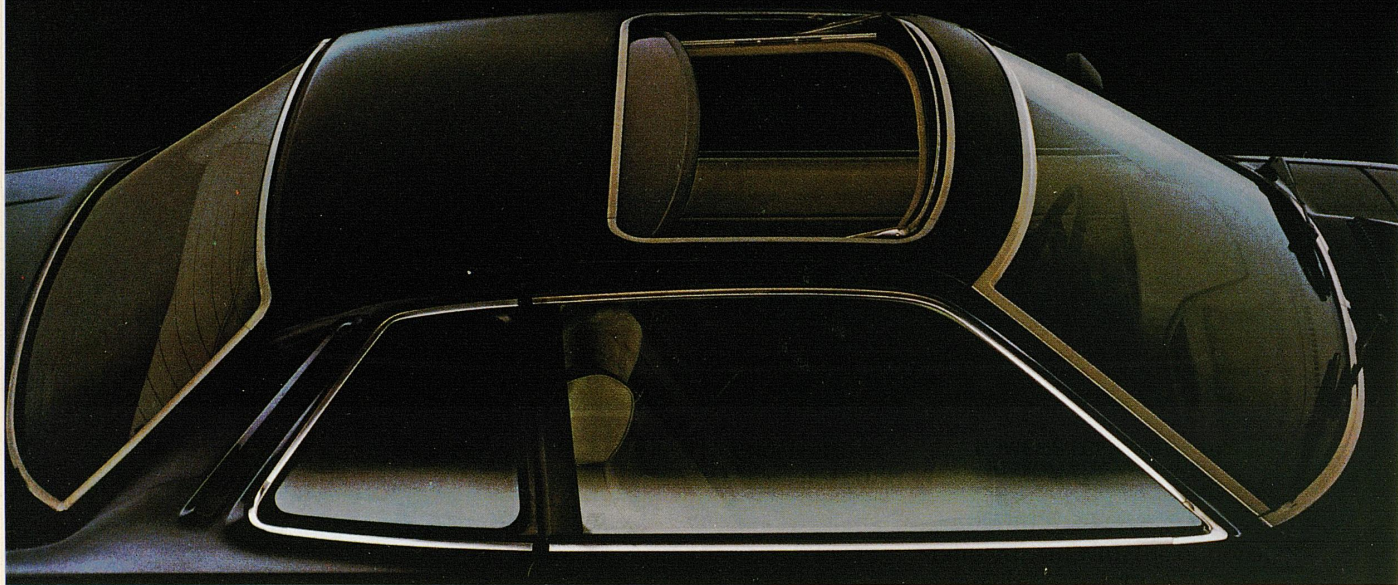
### THE VOLUNTEERS

1	Jenkins	DB	52	McKenzie	LB
2	Taylor	WR	53	Streno	OG
3	Cozart	DB	54	Thompson	C
4	Revez	PK	56	Rumsey	C-G
5	Olszewski	QB	57	Singer	OT
6	Cockrell	QB	58	Knight	OT
7	White	QB	59	Scandrett	DT
8	Joslin	QB	60	Mills	DE
9	Sims	TE	61	Wilson	WR
11	Dickey	QB	62	James	OG
12	Morris	RB	63	Trupovnieks	OT
15	Jones	DB	64	Cunningham	OG
16	Alatorre	QB	65	Furnas	OG
17	Gentry	RB	66	Greer	OT
18	Hogan	DB	67	Mayo	OG
19	Peoples	DB	68	Jackson	MG
20	Warren	PK-P	69	Sanderson	C
21	Colquitt	P	70	Upton	MG
22	Caddell	RB	71	Vaccarella	OT
23	Harper	DB	72	Matthews	OT
24	Duncan	DB	73	North	C
25	Ford	WR	74	Moore	OT
26	Gault	WR	75	Gillespie	OT
27	McBride	DB	77	Wampler	DT
28	Hancock	WR	80	Cofor	TE
29	Clark	DB	81	Smith	TE
30	Houston	LB	82	Dickerson	LB
31	Furnas	RB	83	Holt	DE
33	Jones	RB	84	Ingram	DE
34	Berry	RB	85	Terry	DE
35	Coleman	RB	86	Parrish	WR
36	Jordan	RB	87	Wilson	WR
38	Armstrong	RB	88	Miller	WR
39	Phillips	RB	89	Castel	DT
40	Bates	DB	90	Cook	TE
42	Langdon	TE	91	Aitchison	DE
43	Daniels	DB	92	White	DT
44	Toles	RB	93	Cofor	LB
45	Zander	LB	94	McAdams	DE
46	Williams	MG	95	Kluge	MG
47	Jeffers	DE	96	Coates	DE
48	Burns	LB	97	Simmons	DE
49	Tillman	LB	98	Studaway	DT
50	McMichael	LB	99	Jones	TE
51	McKenzie	LB			

emarks which identify the same product of The Coca-Cola Company

Coca-Cola Bottling Co.

# The simple pleasures of driving a Honda Prelude. Starting from the top.



We think you'll agree, it's a real pleasure to look at.

But our sportiest Honda also sports the kind of features that make it a thrill to drive.

#### THE POWER-OPERATED MOONROOF. FOR OPENERS, IT'S STANDARD.

At the push of a button, the tinted-glass moonroof slides back. At the same time, an automatic deflector helps keep the wind out.

When you're behind the wheel, you'll be pleased at what you see in front of it. This year, the instrument panel houses a separate tachometer and speedometer, a quartz digital clock, a maintenance reminder and an electronic warning system.

Of course, the Prelude is just as much of a pleasure to sit in.

Its luxurious interior features comfortable bucket seats and adjustable headrests.

#### SOME SIMPLE ENGINEERING FACTS.

Our sportiest car has front-wheel drive, four-wheel independent suspension, rack and pinion steering and a responsive 1751cc CVCC® engine. The fact is, the Honda Prelude is designed to give you years of good performance.

#### POWER STEERING COMES AUTOMATICALLY WITH THE AUTOMATIC TRANSMISSION.

The 5-speed stick shift is standard. But with the optional automatic 3-speed, you also get variable-assist power steering.

And after you've weighed all your options, we hope you drive off in the Honda Prelude.

**HONDA**

We make it simple.

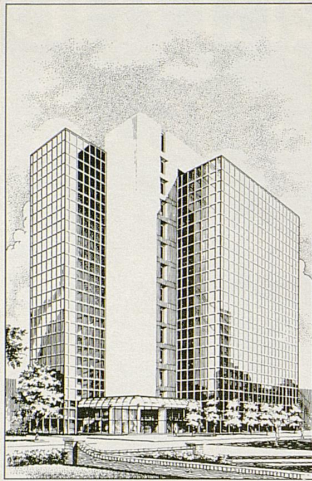




## 1981 UNIVERSITY OF TENNESSEE ROSTER

No.	Name	Pos.	Cl.	Ht.	Wt.	Hometown	No.	Name	Pos.	Cl.	Ht.	Wt.	Hometown
1	Lee Jenkins	DB	Jr.	5-11	182	Atlanta, Ga.	52	Raleigh McKenzie	LB	Fr.	6-3	243	Knoxville
2	Lenny Taylor	WR	So.	5-11	175	Miami, Fla.	53	Glenn Streno	OG	So.	6-2	243	Pittsburgh, Pa.
3	Joe Cozart	DB	So.	5-11	173	Sweetwater	54	Rob Thompson	C	Jr.	6-6	232	Enterprise, Ala.
4	Fuad Reveiz	PK	Fr.	6-0	210	Miami, Fla.	56	Tim Rumsey	C-G	Jr.	6-2	247	Jamestown, N.C.
5	Jeff Olszewski	QB	Sr.	6-2	196	Parma, Ohio	57	Curt Singer	OT	So.	6-4	243	Aliquippa, Pa.
6	Alan Cockrell	QB	Fr.	6-2	218	Joplin, Mo.	58	Steve Knight	OT	So.	6-3	269	Abington, Va.
7	Chris White	QB	Fr.	6-3	190	Cleveland	59	David Scandrett	DT	So.	6-1	236	Kenesaw, Ga.
8	Jeff Joslin	QB	So.	6-0	192	Knoxville	60	Alexander Mills	DE	Fr.	6-3	225	Danville, Va.
9	Mitch Sims	TE	Jr.	6-3	223	Bogart, Ga.	61	Mike Wilson	WR	Fr.	6-5	210	Decatur
11	Daryl Dickey	QB	Fr.	6-2	170	Boulder, Colo.	62	David James	OG	Jr.	6-1	253	Cincinnati, Ohio
12	Randall Morris	RB	So.	5-11	187	Long Beach, Calif.	63	Jani Trupovnieks	OT	Sr.	6-7	279	Hopedale, Ohio
15	Alvin Jones	DB	So.	6-0	191	East St. Louis, Ill.	64	Rory Cunningham	OG	Jr.	6-3	249	Mableton, Ga.
16	Steve Alatorre	QB	Sr.	6-0	175	Cypress, Calif.	65	Mike Furnas	OG	Jr.	6-2	250	Miami, Okla.
17	Dirk Gentry	RB	So.	5-11	191	Bristol	66	Craig Greer	OT	Fr.	6-6	243	Sidney, Ohio
18	Mark Hogan	DB	Fr.	6-0	185	Pittsburgh, Pa.	67	Bill Mayo	OG	Fr.	6-4	265	Dalton, Ga.
19	Carlton Peoples	DB	Jr.	6-0	179	Memphis	68	Leonard Jackson	MG	So.	5-10	224	Macon, Ga.
20	John Warren	PK-P	Jr.	6-0	198	Jesup, Ga.	69	Dale Sanderson	C	Fr.	6-3	230	Hamilton, Ontario
21	Jimmy Colquitt	P	Fr.	6-4	200	Knoxville	70	Todd Upton	MG	Fr.	6-5	250	Alcoa
22	Jim Caddell	RB	Fr.	6-0	195	Millis, Mass.	71	Mike Vaccarella	OT	So.	6-2	236	Stuart, Fla.
23	Daryl Harper	DB	So.	5-9	178	Memphis	72	John Matthews	OT	So.	6-4	265	Memphis
24	Clyde Duncan	DB	So.	6-1	193	Oxen Hill, Md.	73	Lee North	C	Sr.	6-2	258	Tucker, Ga.
25	Glenn Ford	WR	Jr.	6-2	203	Greensboro, N.C.	74	David Moon	OT	Fr.	6-5	250	Meridianville, Ala.
26	Willie Gault	WR	Jr.	6-2	175	Griffin, Ga.	75	Charles Gillespie	OT	Jr.	6-3	266	Spring City
27	Junior McBride	DB	Fr.	6-1	185	Zanesville, Ohio	77	Chris Wampler	DT	Jr.	6-2	243	Lenoir City
28	Anthony Hancock	WR	Sr.	6-0	187	Cleveland, Ohio	80	Mike E. Cofer	TE	Sr.	6-3	227	Chamblee, Ga.
29	Vince Clark	DB	Fr.	6-2	180	Delray Beach, Fla.	81	Jeff Smith	TE	Fr.	6-4	215	Milan
30	Tracy Houston	LB	Jr.	6-0	195	Dayton	82	Calvin Dickerson	LB	So.	6-2	214	Memphis
31	Doug Furnas	RB	Jr.	5-11	215	Miami, Okla.	83	Ricky Holt	DE	Fr.	6-4	225	Tifton, Ga.
33	Johnnie Jones	RB	Fr.	6-0	195	Munford	84	Brian Ingram	DE	Sr.	6-4	226	Memphis
34	James Berry	RB	Sr.	5-10	185	Natchez, Miss.	85	Mike Terry	DE	Jr.	6-1	203	Atlanta, Ga.
35	Chuck Coleman	RB	So.	5-9	176	Louisville, Ky.	86	Doug Parrish	WR	Jr.	5-11	174	Americus, Ga.
36	Roger Jordan	RB	Jr.	6-0	197	Weedsport, N.Y.	87	Darryal Wilson	WR	Jr.	6 0	171	Bristol, Va.
38	Carlton Armstrong	RB	Sr.	5-9	195	Nashville	88	Mike Miller	WR	Jr.	6-0	181	Flint, Mich.
39	Vernon Phillips	RB	So.	5-11	189	Fort Pierce, Fla.	89	Mike Casteel	DT	Jr.	6-5	231	Maryville
40	Bill Bates	DB	Jr.	6-1	193	Knoxville	90	John Cook	TE	Fr.	6-4	215	Knoxville
42	Pat Langdon	TE	Fr.	6-4	215	Burlington, Ontario	91	Bret Aitchison	DE	So.	6-4	208	Boise, Idaho
43	Terry Daniels	DB	Sr.	5-11	177	Miami, Fla.	92	Reggie White	DT	So.	6-5	256	Chattanooga
44	Alvin Toles	RB	Fr.	6-2	205	Forsyth, Ga.	93	Mike L. Cofer	LB	Jr.	6-5	226	Knoxville
45	Carl Zander	LB	Fr.	6-2	210	Mendham, N.J.	94	Johnny McAdams	DE	So.	6-1	227	Lexington
46	Johnny Williams	MG	So.	6-0	239	Knoxville	95	Steve Kluge	MG	Jr.	6-0	268	Staunton, Va.
47	Lemont Holt Jeffers	DE	Sr.	6-4	191	Hampton, Va.	96	Rodney Coates	DE	Fr.	6-2	215	Deptford, N.J.
48	Mark Burns	LB	Jr.	6-1	216	Huntsville, Ala.	97	Tony Simmons	DE	Fr.	6-5	240	Oakland, Calif.
49	Jake Tillman	LB	Jr.	6-3	195	Memphis	98	Mark Studaway	DT	Jr.	6-3	237	Memphis
50	Jeff McMichael	LB	So.	6-1	201	Knoxville	99	Kenny Jones	TE	Jr.	6-5	259	Nashville
51	Reggie McKenzie	LB	Fr.	6-3	237	Knoxville							

# We're on the Move!



## At Second National Bank,

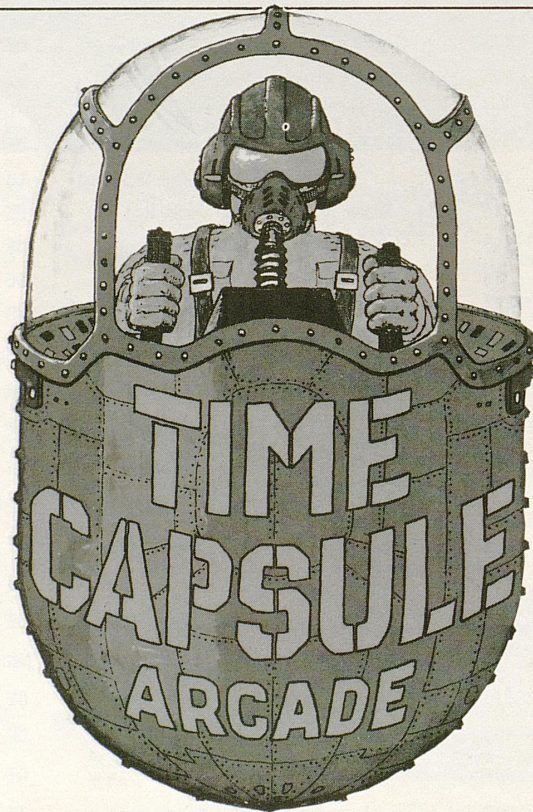
We're on the move to provide the very best service to you. Visit any one of our ten locations and meet our friendly team of professionals who will assist you with all of your banking needs.

We invite you to follow the progress of our new building and to share our spirit of growth and prosperity as we continue to be "the leader in helping people first since 1883."



123 Cheapside • Lexington, Kentucky 40507 • (606) 254-1161 • Member FDIC

761 New Circle Rd.  
299-2724  
Across from  
Eastland Bowling  
Lanes



1466 Village Dr.  
Lexington, Ky.



**We Do Chicken Right.**

# Kentucky Fried Chicken

**21 Convenient Bluegrass Locations:**

Danville  
Frankfort  
Georgetown  
Harrodsburg  
Irvine  
Jackson

**LEXINGTON:**  
Starlite  
1101 New Circle Rd., NW  
696 New Circle Rd., NE  
2205 Versailles Rd.  
860 East High  
2632 Richmond Rd.  
Gainesway  
Russell Cave

Monticello  
Mt. Sterling  
Paris  
Richmond  
Somerset  
Versailles  
Winchester

# Vol Outlook

Tennessee Is 6-3 and looking for bowl bid

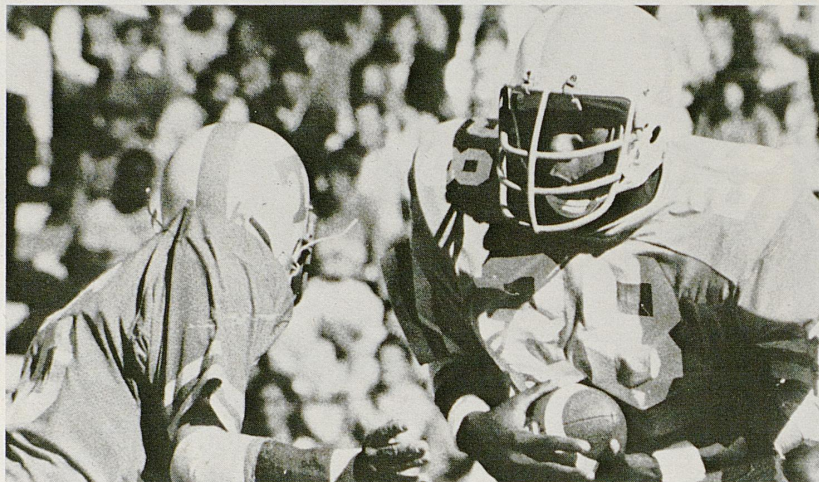
Coach Johnny Majors' Volunteers started the year with back to back losses to Georgia 44-0 and Southern California 43-3. After a disappointing start the Vols bounced back to post three straight victories against Colorado State, Auburn and Georgia Tech before losing to Alabama in Birmingham. Last week the Vols upped their record to 6-3 with a victory over Ole Miss. Willie Gault broke a school record for return yardage and he was a thorn in the Wildcats' side last year.

Scouts from the Hall of Fame, Tangerine, Peach and Independence Bowls are taking a long look at the Volunteers.

The offense is anchored by All-SEC center Lee North who has good size and quickness. Fullback Doug Furnas has been the most consistent performer in the Vols backfield which has had problems at quarterback forcing Coach Majors to alternate between seniors Steve Alatorre and Jeff Olszewski. Alatorre will probably start this afternoon against the Wildcats. Kentucky's secondary will have their paws full stopping the UT receivers. Possessing World Class sprinter speed, Willie Gault, Anthony Hancock and Mike Miller give the Vols the ability to break the big play from anywhere on the field. Hancock is on his way to becoming Tennessee's all-time leading receiver and is also a threat to run the ball, averaging 12.1 yards a carry.

Tennessee's defense is led by Reggie White and Bill Bates who leads the team in interceptions with four. The Vols play a 5-2 or Oklahoma defense which is the same as the Cats. The defense is young but has played well the latter part of the season.

The Volunteer kicking game may well be the strongest part of the Tennessee attack. Punter Jimmy Colquitt is averaging 44.2 yards a punt with his longest being 62 yards. He is the nephew of Craig Colquitt who punts for the Pittsburgh Steelers. The field goal duties are handled by freshman Fuad Reveiz who is the team's leading scorer with 30 points.



Anthony Hancock

This afternoon's Kentucky-Tennessee game marks the 75th renewal of one of the oldest gridiron rivalries in the nation.

The rivalry dates back to Oct. 21, 1893 when the Cats whopped the Vols 56-0 in Knoxville. Since 1901, the teams have played every year except for 1917-18 and 1943.

Tennessee holds a 45-21-9 edge in the battle for the beer barrel. The Wildcats pretty much held their own in the early games of the series but the tide began to turn against the Cats after the 1925 season. The best the Cats could manage were two ties in the next nine games after that. After UK won 27-0 in 1935, the Volunteers strung together 12 straight victories, battled to a 0-0 tie, and then won three more and tied one before Kentucky also won three in a row in 1957-58-59.

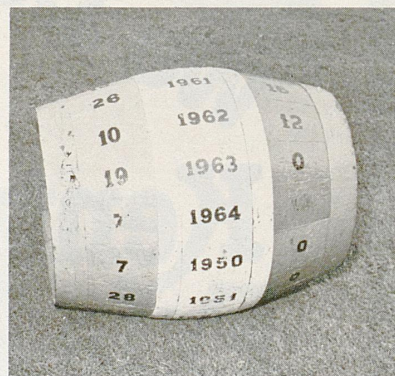
Tennessee has practically owned Kentucky since. The Vols won 13 of the next 15 before Kentucky won in 1976 and 1977. Tennessee has won the three games since.

Last year at Neyland Stadium before 90,000 fans, Tennessee found the offensive punch they had lacked all season. The impressive 45-14 Vol win snapped a four-game losing streak.

Kentucky made a game of it in the first half but the tide turned when Tennessee marched 72 yards for a score a minute before intermission. Earlier, the Cats had been shocked by Willie Gault's 92-yard

return of the opening kickoff. But the Cats didn't fold. On their third possession, Kentucky marched 74 yards in 11 plays capping the drive with Larry McCrimmon sneaking over from the one.

Tennessee came out cooking in the third quarter. The Vols scored the first four times they got the ball and had a final drive stopped on the Kentucky 15. The Cats ran



To the winner goes the beer barrel

only 19 plays—including four punts—in the second half.

Quarterback Steve Alatorre, wide receiver Willie Gault and tailback James Berry—all back this year—were heroes in the revival of the Tennessee offense last year in Knoxville. Alatorre completed 11 of 17 passes, Berry rambled for 125 yards and Gault returned a kickoff 92 yards and caught a 48-yard rain-bow from Alatorre.

# Vol Chief



**JOHNNY MAJORS**  
Head Coach

**I**NTO his fourteenth year of college coaching, Johnny Majors has secured a niche as one of the nation's most widely respected mentors.

Two of his previous 13 teams reached such heights of achievement that Majors was chosen national coach of the year. The Football Writers Association picked him for the honor in 1973, and three years later the authors were joined by the American Football Coaches Association in naming Majors as the season's outstanding coach.

The 1976 national championship year at Pittsburgh was followed by a summons from his alma mater, Tennessee. Vol fans wanted their former All-America hero to return to his native country and put the football program back on course. Steady improvement brought a 7-4 record in 1979 and a trip to the Bluebonnet Bowl.

Johnny Majors is as much a part of Volunteer folklore as Neyland, McEver, Cafego and Lauricella. The dazzling deeds of the 1956 Vols, an undefeated aggregation that ranked second in the nation, were tied to the heady little field general from Huntland. More than two decades in the coaching profession took Majors from an assistant freshman post at Tennessee to the reins of national champion Pittsburgh, and finally back to his alma mater as head coach. Stopovers at Mississippi State, Arkansas and Iowa State sharpened the

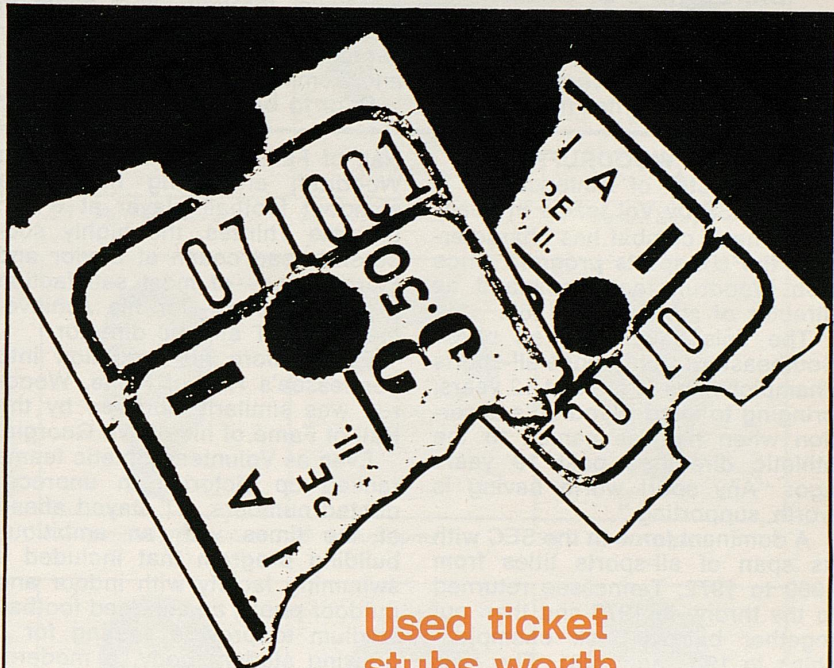
young coach's football savvy as he made his way through the gridiron vineyards.

Majors came to Tennessee in 1953 after playing for his father at Huntland High School where he scored an unbelievable 565 points.

Majors' selection as UT's nineteenth head football coach brought him back to the campus where his myriad talents earned him All-America recognition and back to the state where the name Majors brings to mind a legendary sports family.

The return to UT brought Majors back to his roots, only a few miles from the beautiful Sequatchie Valley where Johnny grew up and where father, the late Shirley Majors, coached football at the University of the South.

Johnny was a charter inductee into the Tennessee Sports Hall of Fame. One of the most significant honors bestowed on Majors was his selection to the All-SEC quarter-century team picked by sports writers and broadcasters for the years 1950 through 1974.



**Used ticket stubs worth \$1.25!**



Your ticket stub from this game can be used at participating Domino's Pizza stores for \$1.00 off any size pizza, and for each ticket redeemed Domino's Pizza will donate \$.25 to your school's athletic fund. (participating schools only) Limit one ticket per pizza.

Help out your school by ordering a hot, delicious pizza!

**Fast, Free Delivery!**

Limited to participating schools only. One ticket per pizza and not good with any other offer.

©1981 Domino's Pizza, Inc.

# Tennessee



**DR. EDWARD J. BOLING**  
University President

Dr. Edward J. Boling, 17th president of the University of Tennessee, was appointed in 1970 after

**BOB WOODRUFF**  
Director of Athletics

**S**UCCESS by Vol teams in head-to-head combat has characterized the UT sports program since Bob Woodruff took command as director of athletics in 1963.

The Vols have captured seven Southeastern Conference all-sports championships in the last 12 years, bringing to mind Woodruff's assertion when he was named to the athletic director's post 19 years ago: "Any sport worth having is worth supporting."

A dominant force in the SEC with its span of all-sports titles from 1969 to 1972, Tennessee returned to the throne in 1975 and then put together back-to-back championships in 1980 and 1981. The Vols have finished first, second or third for 12 of the past 13 years.

Ten years ago the Tennessee

career in teaching, industry, state government, and university administration. He is the chief administrative officer of a statewide system of higher education which includes four primary campuses, several special units, and statewide programs of research and public service. During his presidency, the alumni and fund raising programs of the University of Tennessee have received national recognition. And, in 1980, UT completed a \$57 million fund-raising campaign.

**DR. JACK E. REESE**  
Chancellor

**D**r. Jack E. Reese gained the experience and perspective essential to his work as chancellor of the University of Tennessee, Knoxville, through years spent in classroom teaching, scholarly research, academic administration, and community involvement.

Prior to being named chancellor



in September, 1973, Dr. Reese had served as associate vice chancellor for academic affairs and dean of graduate studies. A professor of English at UTK, he also taught at the University of Kentucky and served at the University of Arizona as an academic administrative intern of the American Council on Education.

Hall of Fame opened its doors to Woodruff, enshrining him as a standout football player at UT in the late Thirties, the highly successful head coach at Baylor and Florida, and—of most satisfaction to Tennesseans—for his achievements as UT athletic director.

Even before his induction into Tennessee's Hall of Fame, Woodruff was similarly honored by the Hall of Fame of his native Georgia.

Even as Volunteer athletic teams racked up victories in unprecedented numbers, UT stayed ahead of the times with an ambitious building program that included a swimming facility with indoor and outdoor pools, an enlarged football stadium to provide seating for a growing student body, a modernized baseball plant, a new tennis stadium and a golf putting and pitching area.

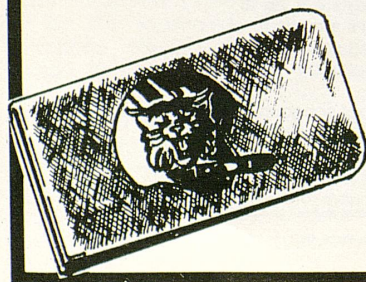
A native of Athens, Ga., Woodruff was a standout tackle at Tennessee from 1936-38 on teams that won 23 games and lost only 5. After receiving his engineering degree, he remained on the Vol football staff as an assistant to Bob Neyland in 1939 and 1941. Entering the Army in 1942, he was discharged in 1946 with the rank of major. In 1944 and 1945, he helped coach West Point to two national championships under Earl Blaik.

In 1946, he was line coach at Georgia Tech, moving to Baylor as head coach the following season. Prior to being named athletic director at Tennessee, he was an assistant coach of the Vols for two seasons (1961-62).

Woodruff serves as NCAA District Three representative to the National Football Foundation and Hall of Fame.

# dawahares

GARDENSIDE \* FAYETTE MALL \* LEXINGTON MALL



**WILDCAT  
MONEY CLIP**  
\$17.50

**WILDCAT TIE TAC**  
\$8.50



## WILDCAT JEWELRY

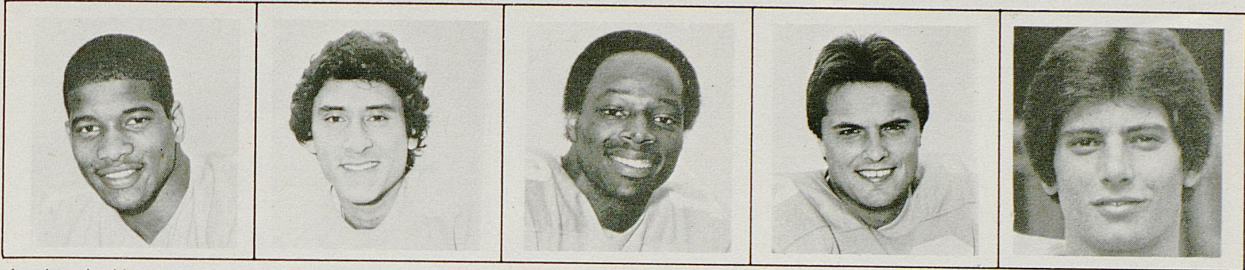
Especially for you, the best WILDCAT Fan ever! WILDCAT Jewelry made exclusively for Dawahare's by William Gilbert. An attractive new way to say "I'm behind the WILDCATS 100%."

... (not shown) ...

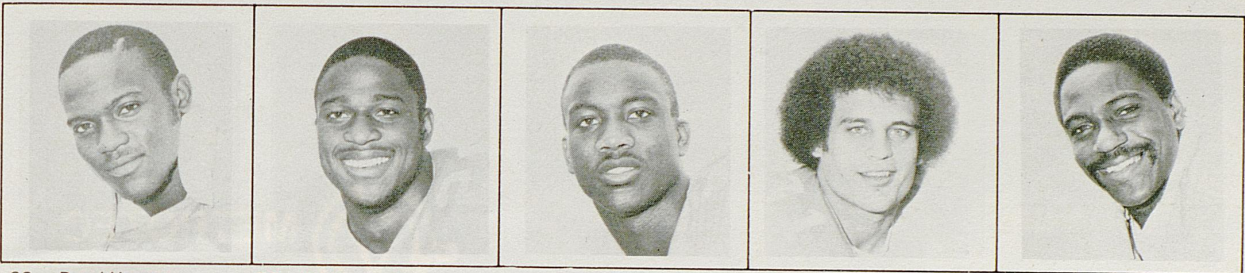
**WILDCAT  
KEY RING**  
\$12.50

In the  
Men's Shop.

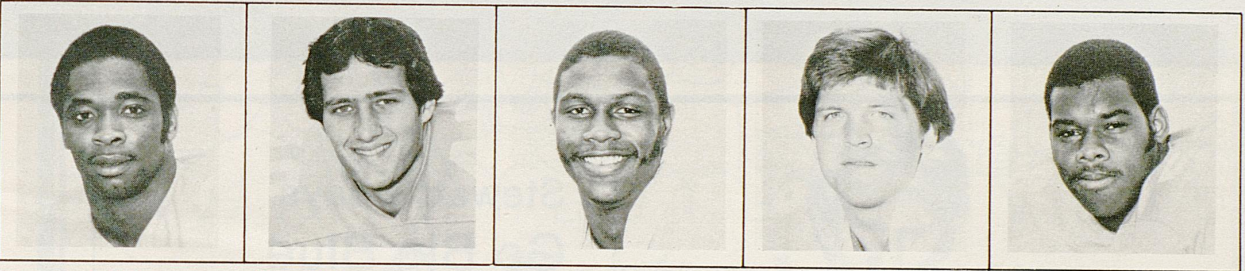
# The Vols



1 Lee Jenkins      16 Steve Alatorre      19 Carlton Peoples      20 John Warren      21 Jimmy Colquitt



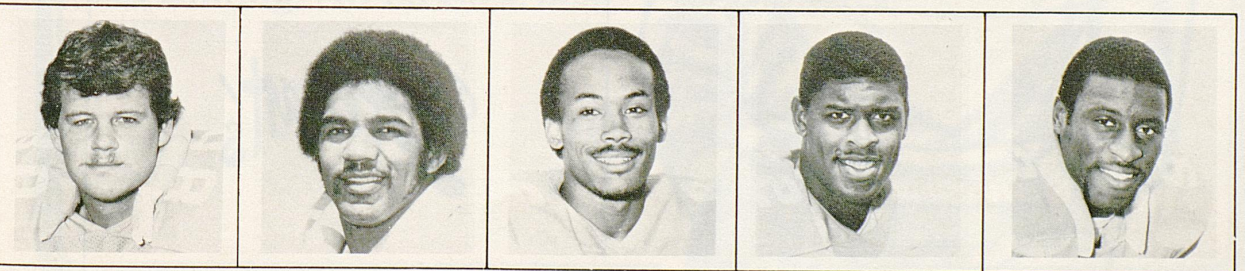
23 Daryl Harper      26 Willie Gault      28 Anthony Hancock      31 Doug Furnas      34 James Berry



35 Chuck Colman      40 Bill Bates      47 Lemont Holt Jeffers      48 Mark Burns      58 Steve Knight

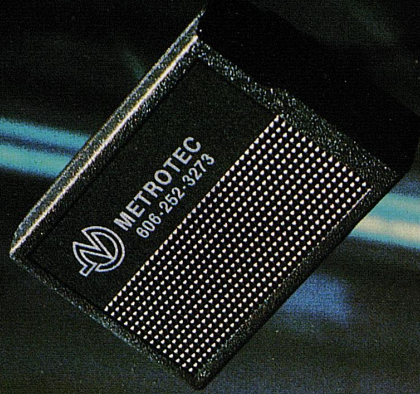


62 David James      68 Leonard Jackson      72 John Matthews      73 Lee North      77 Chris Wampler



80 Mike E. Cofer      84 Brian Ingram      88 Mike Miller      92 Reggie White      93 Mike L. Cofer

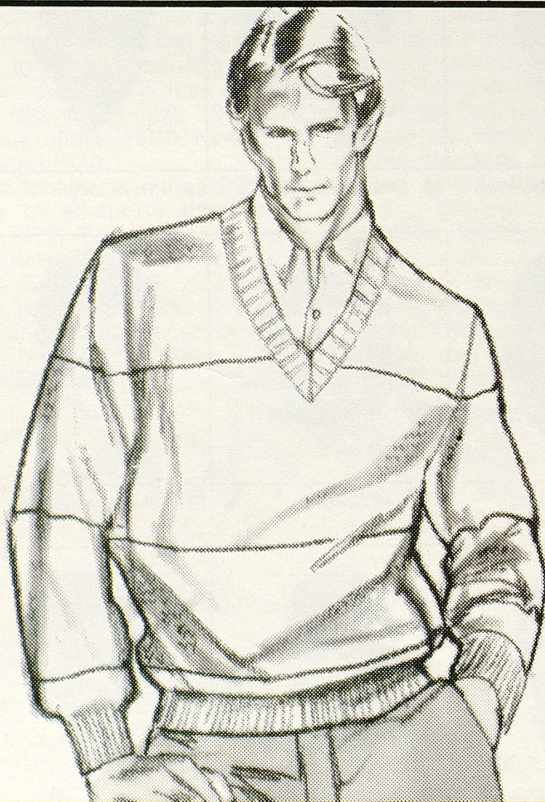
# The Pager



**METROTEC**

606-252-3273

220 E. Second, Lexington



## Stewart's says Go Big Blue

fashion sweaters  
by Kennington

Precise, enduring — the engineer pencil stripe design in cream, yellow, light blue, tan, burgundy or black. 100% acrylic. S-M-L-XL. D-085 Young Men's all stores.

22.50

*Stewart's*





## Go Kentucky! To McDonald's® after the game!

After the yelling and clapping for your team, you deserve a break. The kind you can get only at McDonald's. No waiting. No hassles. Just

fast, friendly service.

Yes sports fans, you deserve a break after the game. And you'll get it at McDonald's!

*You deserve  
a break today®*



# Statistics

## 1981 UNIVERSITY OF KENTUCKY VARSITY FOOTBALL STATISTICS (Ten Games)

IND. RUSHING	G	ATT	YDS	AVE	AVE	TD	LR
Lee	7	50	192	3.8	27.4	0	20 FL
Gay	9	41	157	3.8	18.1	1	16 VPI
Abraham	10	61	156	2.6	15.6	1	12 CL
Venable	9	65	146	2.2	16.2	2	28 LSU
Parks	10	27	125	4.6	12.5	2	62 LSU
Francis	4	30	117	3.9	29.3	0	10 AL
Henry	8	43	109	2.5	13.4	0	26 LSU
Adams	7	34	80	2.4	10.0	0	10 VPI
Donigan	7	27	79	2.9	11.3	0	10 LSU
Long	10	1	16	16.0	1.0	0	16 SC
Phillips	10	2	-14	-7.0	-1.4	0	-3 VU
Boyle	2	11	-75	-6.8	-37.5	0	1 VU
Jenkins	9	33	-171	-5.1	-19.0	0	14 KU
	10	425	1,007	2.1	100.7	6	62 KSY

PASSING	G	ATT	CMP	AVE	INT	PCT	YDS	TD	LP	KU
Jenkins	9	153	77	8.1	7	50.3	938	4	37	NT
Henry	8	40	13	1.6	6	28.3	146	0	18	FL
Boyle	2	35	17	8.5	2	48.6	277	0	57	FL
	10	228	107	10.7	15	46.9	1,361	4	57	FL

RECEIVING	G	CGT	GM AVE	YDS	AVE	TD	LR
Massie	10	25	2.5	342	13.7	0	23 CL
Campbell	10	22	2.0	314	14.3	2	37 KU
Watson	8	11	1.4	132	12.0	0	18 NT
Adams	7	10	1.4	82	8.2	0	14 CL
Phillips	10	9	0.9	206	22.8	0	57 FL
Parks	10	7	0.7	80	11.4	1	46 GA
Gay	9	6	0.7	61	10.2	0	17 SC
Lee	7	4	0.6	34	8.5	1	13 FL
Donigan	7	4	0.6	32	8.0	0	18 NT
Venable	9	4	0.4	31	7.7	0	13 NT-LSU
Abraham	10	2	0.2	18	9.0	0	12 KU
Francis	4	1	0.3	16	16.0	0	16 VU
Mangas	10	1	0.1	9	9.0	0	9 FL
Shadowen	10	1	0.1	4	4.0	0	4 FL
	10	107	10.7	1,361	12.7	4	57 FL

PUNTING	NO	YDS	AVE	LP
Jenkins	58	2265	39.1	60 FL
Calhoun	10	328	32.8	48 VU
	68	2593	38.1	60 FL

PUNT RETURNS	NO	YDS	AVE	TD	LR
Molls	31	414	13.4	1	87 VU
Long	1	6	6.0	0	6 KU
Petty	2	3	1.5	0	3 KU
Team	1	-10	-10.0	0	0
	35	413	11.8	1	87 VU

KO RETURNS	NO	YDS	AVE	TD	LR
Petty	6	144	24.0	0	33 SC
Adams	5	53	10.6	0	19 VPI
Parks	4	79	19.8	0	32 SC
Phillips	2	45	22.5	0	25 VPI
Richmond	2	25	12.5	0	18 AL
Henry	1	14	14.0	0	14 FL
Campbell	1	10	10.0	0	10 SC
Molls	1	6	6.0	0	6 LSU
Mangas	1	0	1.0	0	1 LSU
	23	376	16.3	0	33 SC

INTERCEPTIONS	NO	YDS	AVE	TD	LR
Long	4	176	44.0	1	91 NT
Molls	1	30	30.0	0	30 SC
Baird	4	55	14.3	0	22 GA
Lyons	1	10	10.0	0	10 SC
Petty	2	-5	-2.5	0	0 GA
	12	266	22.2	1	91 NT

DATE	1981 SCHEDULE	UK	OPP	ATTEND
Sept. 5	North Texas State (H)	28	6	53,276
Sept. 19	Alabama (H)	10	19	57,853
Sept. 26	Kansas (A)	16	21	40,200
Oct. 3	Clemson (H)	3	21	57,071
Oct. 10	South Carolina (H)	14	28	57,553
Oct. 17	Louisiana State (A)	10	24	69,169
Oct. 24	Georgia (A)	0	21	80,780
Oct. 31	Virginia Tech (H)	3	29	54,500
Nov. 7	Vanderbilt (A)	17	10	40,250
Nov. 14	Florida (A)	12	33	60,286
Nov. 21	Tennessee (H)			

RECORD: Won 2, Lost 8 SEC: Won 1, Lost 4

TEAM	KY	OPP
FIRST DOWNS	144	185
Rushing	58	110
Passing	77	64
Penalty	9	11
Rushing Att./Yds.	425-1278	525-2172
Rushing Yds. Lost	473	310
NET Rushing	907	1862
Avg. Yds. Per Rush	2.1	3.5
TDs Rushing	6	20
Passes Att./Comp.	228-107	218-114
Passing Yds.	1361	1394
Avg. Yds./Pass	5.9	6.7
Avg. Yds./Comp.	12.7	12.2
Pct. Comp.	46.9	52.2
TDs Passing	4	3
Field Goals/Atts.	8-12	14-17
Passes Int. by/Yds Ret.	12-266	15-130
Total Plays (R&P)	653	743
Total Yardage	2268	3156
Avg. Yds. Per Play	3.5	4.2
Punts/Had Blocked	68-8	68-0
Punting Yds. Avg.	2593-38.1	2786-40.9
Punts Ret./Yds.	35-413	36-170
Kickoff Ret./Yds.	23-376	12-308
Penalties	39-371	60-521
Fumbles/Lost	33-19	23-7
3rd Down Conversions	46-117	64-167
4th Down Conversions	11-17	14-18
TIME OF POSSESSION	27:25	32:12

SCORING						
TD	FG	S	K	P	R	TP
Griggs	6-9		11-11			29
Campbell	2					12
Parks	3					18
Venable	2					12
Lee	1					6
Long	1					6
Strein		2-3				6
Roe	1					6
Gay	1					6
Molls	1					6
Abraham	1					6
	13	8-12	11-11			113

SCORE BY QUARTERS					
KY.	17	40	26	30	113
OPP.	53	49	55	55	212

DEF. FIGURES	SOLOS	ASST.	BEHIND LINE YDS
Grimsley	82	58	2
McClelland	69	57	5
Molls	67	40	1
Felder	53	33	5
Smith	49	40	6
Petty	47	17	0
Martin	47	33	2
Long	43	36	0
Lyons	41	20	3
Baird	37	24	1
Brooks	33	16	9
Roe	23	21	2
Ference	23	11	0
Freeman	20	18	0
McVeigh	16	23	1
Richmond	11	6	0
Johnson	9	3	0
Jackson	6	3	0
Meers	4	3	0

# Quick Copy Service, Inc.

*"The Express Printer"*

## 254-5716

- Multi-page Duplicating
- Architects and Engineering Specs
- Complete Bindery Services
- Color Brochures
- Stationery
- Carbonless Forms

**FAIR PRICES — GOOD QUALITY — EXCELLENT SERVICE**

1485 ALEXANDRIA DRIVE

LEXINGTON, KENTUCKY 40504

**Favorite Singers - Favorite Songs**

55 60 70 80 90 110 140 160

# WLAP-AM 630

**A CBS RADIO NETWORK AFFILIATE**

## *Sleepy Head* HOUSE

418 West Short Street  
ACROSS FROM THE OPERA HOUSE  
(Side Entrance)

**Featuring  
FINE HOME FURNISHINGS  
SEALY AND SERTA BEDDING**



**"Where People Shop For Quality And Don't Mind Paying A Little Less®"**

**The Family Dog**  
and  
**College Station**



Serving the Students of  
**EKU and UK**

First Street

Richmond, KY



The 1981-82 University of Kentucky national-award-winning Wildcat cheerleaders! From left: Mike Seltsam of Frankfort, Jennifer Jackson of Lexington, Steve Gibson of Lexington, Leslie Davis of Louisville, Tim Hudson of Henderson, Julie Billingham of Murray, Mark Wingate of Frankfort, Mona Wilson of Lexington, Donald Ware of Louisville, Kim Calvert of Lexington, Lee Ackiss of Lexington, Lisa Perkins of Lexington, Jeff Gothard of Lexington, and Tomi Anne Blevins of Williamson, W. Va. The UK Wildcat is Ralph McBarron of Louisville.

## University of Kentucky Cheerleaders — Best in Nation

This year's University of Kentucky cheerleaders are one of the best collegiate squads in the nation. They have already earned top honors from pre-season competition with other outstanding squads in the United States.

At the prestigious Universal Cheerleading Association competition this past summer, UK's cheerleaders came out with "best overall squad" honors — beating out Ohio State and Memphis State which were the No. 1 squads in the country the past two years. Now UK's cheerleaders are ready to turn on their many talents for the UK fans.

UK's cheerleaders are ably coached by T. Lynn Williamson, acting dean of students.

We salute the Kentucky Wildcats  
with the U of K pep song.

On, on U of K  
We are right  
for the fight, today.  
Hold that ball  
and hit that line,  
Every Wildcat star will shine.  
We'll fight, fight, fight  
for the blue and white.  
As we roll to that goal, varsity.  
We will kick, pass and run  
Till the battle is won  
and we'll bring home a victory.



T. O. Jack Hall, CLU  
Suite 600  
Louisville Trust Bldg.  
Louisville, KY 40202  
(502) 587-0936



Leonard "Babe" Ray, CLU  
506 Security Trust Bldg.  
Lexington, KY 40507  
(606) 255-8722

INSURANCE FOR YOU AND YOUR BUSINESS

**LIFE • DISABILITY  
GROUP • RETIREMENT**



## Around Campus

# Alumni Supporters Continue To Grow

By RALPH DERICKSON  
UK Information Services

There are many people who are very serious about that catchy little phrase, "It's Your University." These are the same people you might hear saying, "The University has been very good to me."

They're the kind of people who—no matter what catch phrase is used to describe them—are willing to give of themselves in volunteer efforts on behalf of the University of Kentucky.

"The key to any successful development program is the effort of its volunteers," says Ray Hornback, UK vice president for university relations. "And, UK is extremely fortunate to have many such keys.

"You just can't say enough good things about such people," Hornback contends. Just mentioning their names on paper constitutes a sizable publication each year from the Development Office. "It reads like a 'Who's Who' of volunteer community service," Hornback notes.

And their efforts have a remarkable payoff.

In 1980 alone, volunteer efforts on behalf of UK helped bring in \$5.3 million in private financial support—a 32 percent increase over 1979.

Private support to the University comes from many sources including the annual Alumni-Giving Fund, corporate contributions, and special development projects.

This year's Alumni-Giving fund has received an additional impetus known as the "Nutter Challenge."

Ervin J. Nutter, a 1943 UK graduate, now living in Xenia, Ohio, challenged fellow alumni to give \$100,000 in "new dollars" to the University. If the challenge is met, Nutter, who is the 1980-81 UK Development Council Chairman, promises to personally contribute another \$100,000 to the University.

Under the leadership of Lexington's Tommy Bell, who is in his second year as chairman of the Alumni-Giving Fund, the alumni surpassed the half-way mark in meeting the Nutter Challenge in early October.

"Tommy Bell has worked the annual giving program with a vengeance this year," says Hornback. "He has done everything the University has asked of him and a lot more."

Successful completion of the Nutter Challenge, combined with continuing alumni gifts, will put the annual fund over the \$1 million mark for the first time. In 1980, this giving totaled \$859,339.

Among persons who have volunteered considerable personal efforts on behalf of UK's development programs is Robert T. McCowan, vice chairman of the board of Ashland Oil, Inc., and a member of UK's Board of Trustees.

McCowan is now in his second year as chairman of the UK Fellows Program which saw more than 90 new members added to the Fellows roster in 1980. The Fellows Program alone has generated more than \$20 million in private support for the University since its beginning in 1966.

To become a UK Fellow, a person must contribute \$10,000 or more to the University, either in



Two UK volunteers who have contributed significantly to private giving efforts at the University are Ervin Nutter, left, and Lexington's Tommy Bell.



Robert McCowan of Ashland, chairman of the UK Fellows program.

one gift or by pledging \$1,000 a year for 10 years, or donate through other deferred giving plans.

New UK Fellows were honored last night at a special dinner as a part of UK's annual Development Council weekend. More than 400 UK boosters attended the Fellows' dinner.

Then generosity of personal gifts to the University is a continuing source of amazement and pride to those responsible for Development Office programs, Hornback says.

In May, William and Eloise Sturgill made a personal contribution of \$400,000 to the University.

Sturgill, a 1946 UK graduate in business administration, has served on the University's Board of Trustees since 1972 and was recently re-elected to another term as the board's chairman.

"This most recent act of devotion is just one of the many ways Bill Sturgill has significantly contributed to UK," Hornback says.

Large corporate gifts are becoming another very exciting trend, too, UK Development Office officials say.

Ashland Oil, Inc. began the trend last year with a \$1 million grant to improve and enrich the College of Business and Economics. At the time, it was the largest single corporate gift to UK in its 115-year history.

Another \$100,000 from Ashland Oil awarded at the same time will pay for visiting professors at UK.

Under this program nationally acclaimed journalist Tom Wicker, a columnist for The New York Times, began teaching special courses at UK earlier this month.

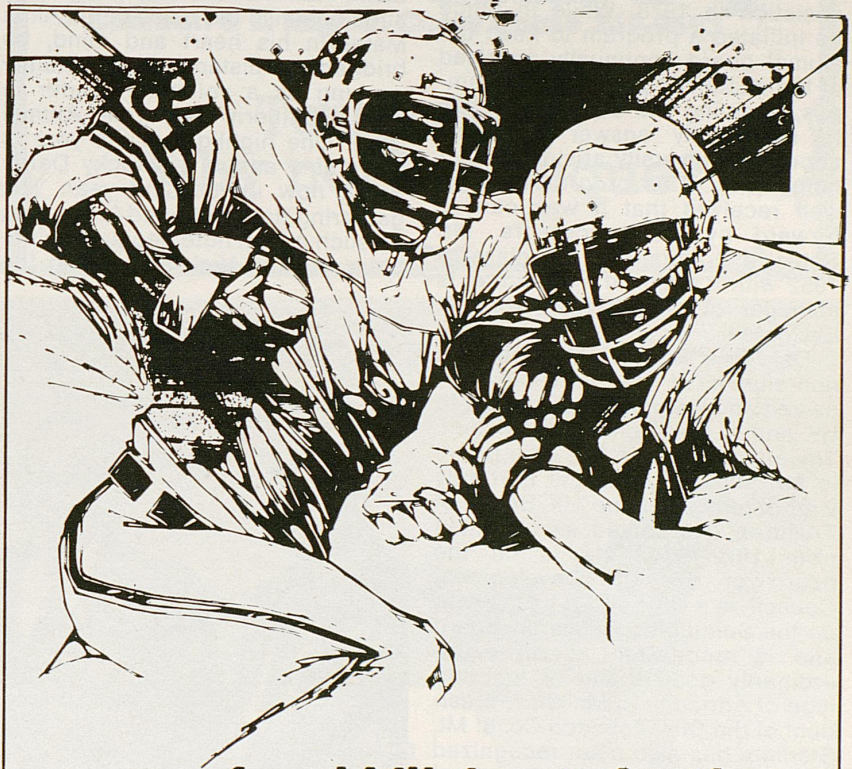
Other major corporate contributions have included \$200,000 from IBM to aid both the colleges of Business and Economics and Engineering, and \$266,000 from Philip Morris, Inc. to the UK College of Agriculture.

In August, the R. J. Reynolds Tobacco Co. made a \$1 million grant to the UK College of Agriculture for tobacco research and the tobacco extension program. The grant begins in January 1982

and will continue for four years. The grant is the largest the tobacco company has made for research.

Whether it's private or corporate contributions, UK is keenly aware of the vitality such development efforts lend to the institution.

"It's people like this who are helping make the University a better place at a time when public dollars are drying up," Hornback says. "Without this kind of support from private sources, we would not be able to do a lot of things which help keep us in a competitive position with other land grant institutions in the region."



*for Wildcat Action*

**Depend on WHAS  
Radio 84**

# Alumni News

By Liz Demoran  
Editor, Alumni Publications

Each year the University of Kentucky Alumni Association honors four to five of the volunteers who keep the organization running smoothly throughout the nation. This year's select honorees are Ted B. Bates of Lexington, Albert G. Clay of Mt. Sterling, Betty White Nelson of Hopkinsville and William E. Vick of Burbank, California.

Mr. Bates was honored for his service as a member of the Alumni Board of Directors since 1974 and his work as president of the Association in 1978. While in office he initiated a program to keep the alumni board continually apprised of the academic programs on campus, enabling the board members to more fully answer questions about the university arising in their hometowns. This program was so well received that it was carried forward by his successors. Mr. Bates, a graduate of the class of 1952 with a major in agriculture, is manager of Wimbledon Farms in Lexington.

Only nine times in 20 years have non-alumni of the university received an award for their service to UK and to the Alumni Association. The ninth person in this elite group is Mr. Clay. Mr. Clay is currently vice chairman of the UK Board of Trustees. (He served as chairman from 1972-1974.) He is on the board of the UK Development Council, is a UK Fellow, has served on the Spindletop Research Board and is recognized as an extraordinarily good friend of the College of Agriculture. Mr. Clay, president of the Clay Tobacco Co. of Mt. Sterling, has also been recognized for his service to the Boy Scouts of America and was awarded the 1976 Brotherhood Award of the National Conference of Christians and Jews.

Betty White Nelson has been president of the alumni club in Hopkinsville on two occasions and a member of the Alumni Board of Directors for six years. During her first term as president of the Christian County Alumni Club, she initiated the idea of club scholarships for students graduating from the local community college and continuing their education at UK in

Lexington. That idea has since been copied by other clubs and is another vital link in the UK's growing alumni program. As a member of the board of directors, she chaired several committees but most importantly was instrumental in revising the procedures for the Great Teacher Awards program, a program which enjoys widespread visibility among students and faculty alike.

Mr. Vick came 2,200 miles to attend the alumni Homecoming activities not knowing that he was to be honored for his more than 20 years of involvement with UK alumni affairs. Never letting distance diminish the place of his Alma Mater in his heart and mind, he bridged the distance by constantly working as a volunteer leader in UK's Southern California Alumni Club. One highlight of the year is the club's annual Kentucky Derby Party, now in its 22nd year. The gathering has continued for so long on such a high note because volunteers like Mr. Vick are among the

first to arrive, greet newcomers and sell chances on a famous Kentucky product to raise money for club projects. He and Mrs. Vick also invite the club leadership into their home to encourage the continuation and vitality of the program.

The UK Alumni Association's Distinguished Service Awards were first presented in 1961. Since that time 79 men and women have been singled out for their greater than usual service to the Association and the University. Next Homecoming four to five other volunteers will be recognized for the time and energy they give to help make the Association and UK better institutions.

★ ★ ★

With the final football game of the year, the University of Kentucky Alumni Association wishes to extend its best wishes to all of the alumni for the holiday season ahead. May the joy of giving which predominates at year's end bring you happiness as you give and as you receive.



ALUMNI SERVICE AWARDS are warmly received by the 1981 recipients, from left, Ted B. Bates, William E. Vick, Betty White Nelson and Albert G. Clay.



Out-of-state alumni clubs are an excellent source for new friends, local community information and a continuing tie with the old stomping grounds. If you're moving or visit the communities listed below, consider introducing yourself to a UK Alumni Club.

#### OUT-OF-STATE

##### Atlanta

Dave Shelton  
106 Cumberland Dr.  
Carrollton, GA 30117

##### Birmingham

James V. Jackson  
3429 River Bend Rd.  
Birmingham, AL 35243

##### Carolina's

Bob Kleier  
4545 Providence Rd.  
Charlotte, NC 28211

##### Chicago

Dave Campbell  
9408 Ogden  
Brookfield, IL 60513

##### Cincinnati

Michael W. Hawkins  
2100 Fountain Square Plaza  
511 Walnut St.  
Cincinnati, OH 45202

##### Dayton

Clint Jett  
808 Clover St.  
Dayton, OH 45410

##### Delaware Valley

Al Albrecht, Jr.  
1180 Highland Ave.  
Abington, PA 19001

##### Denver

Mary & Bill Althouser  
7143 Mt. Meeker Rd.  
Longmont, CO 80501

##### Detroit

Betsy Evans  
27855 Hoover Rd. #16  
Warren, MI 48093

##### Gold Coast

Tom Kirk  
PO Box 13137  
Ft. Lauderdale, FL 33316

##### Houston

Rich Robbins  
Gerald D. Hines Interests  
2100 Post Oak Tower  
Houston, TX 77056


##### Indianapolis

Joe Barber  
8307 Picadilly Lane  
Indianapolis 46256

##### Jacksonville

Dr. Donald Morford  
2732 Old River Road  
Jacksonville, FL 32217

(Continued on Page 51)



**The best  
darn barbeque  
"this side of anywhere"  
is within walking distance  
of the stadium!**

**BILLY'S BAR-B-Q**  
Cochran & E. High in Chevy Chase 269-9593

**Tailgating?  
Why not barbeque?**

## Kenington Fall Mixed Sale

Sunday November 15, 1981



**Ken  
ington**

Linda Conley, Sales Manager  
Kenington Sales Company, Inc.  
a division of The Kentucky Horse Center  
3380 Paris Pike, Lexington, Ky. 40511  
(606) 299-5212

# Wildcat Band

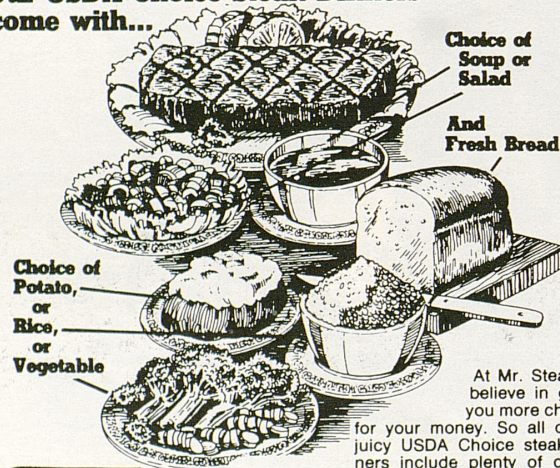
## PREGAME

The 1981 Pregame music includes a fanfare of "Rhapsody in Blue", "Mr. Touchdown, USA", "Washington Post March", "Blue Skies", and a reprise of "Rhapsody in Blue". Included in the Pre-game presentation is the traditional Marching "K" and "On, On, U of K".

## HALFTIME

The performance today begins with the theme music from the movie, "The Wind and the Lion." Next, featuring the trumpet line is "Jupiter" by the popular group Earth, Wind and Fire. The concert number is a special arrangement of "Sweet Georgia Brown," which features the mellophonium section. The band concludes with "Legend of the One-Eyed Sailor" by Chuck Mangione.

**AT MR. STEAK  
OUR "CHOICE"  
COMES WITH  
MORE CHOICES.**  
Our USDA Choice Steak Dinners  
come with...



At Mr. Steak we believe in giving you more choices for your money. So all of our juicy USDA Choice steak dinners include plenty of choice extras all at one very choice price. It's something to think about the next time you choose a restaurant.



2467 NICHOLASVILLE RD. PH. 276-2822

## 1981 University of Kentucky Band Staff

DIRECTOR OF BANDS.....W. Harry Clarke  
DIRECTOR OF MARCHING BAND.....Gordon Henderson  
SR. ASSISTANTS.....Dale Ashby, Fred Ashby,  
John Laverty  
DRUM MAJOR.....Sandra Banks  
ASST. DRUM MAJORS.....Greg Stepp, Tim Davis  
LIBRARIANS.....Pat Pickett, Mendy Cumberledge  
UNIFORM CHAIRMAN.....Debbie Wilson  
INSTRUMENT COORDINATOR.....Darryl Wylie  
FIELD MANAGER.....Richard Harbin  
HEAD MAJORETTE.....Claudia Andres  
CO-HEAD FLAGBEARER.....Jill Glascock, Karen Kron  
PRESIDENT.....Fred Ashby  
VP FOR ALUMNI AFFAIRS.....Randy Bishop  
VP FOR BAND HISTORY.....Ted Mayer  
VP FOR SOCIAL AFFAIRS.....Lu Ann Reeves  
TREASURER.....Greg Stepp  
SECRETARY.....Cinde Gorbandt  
PUBLICITY CHAIRMAN.....Mary Ann Ham  
FRESHMAN REPRESENTATIVE.....Lashele Montfort

Alumni News

(Continued from Page 49)

**Chattanooga**

Charles Gray  
8813 St. John Rd.  
Hixson, TN 37343

**Knoxville**

John Fowler  
1825 Nantasket Rd.  
Knoxville, TN 37922

**Los Angeles**

Dave Kelleher  
3265 Alta Laguna  
Laguna Beach, CA 92651

**Memphis**

George D. Roberts  
8341 Poplar Pike  
Germantown, TN 38138

**Montgomery**

Troy Christopher  
423 Melanie Dr.  
Montgomery, AL 36109

**Nashville**

Bruce Paynter  
4207 Aberdeen Rd.  
Nashville, TN 37205

**New York City**

Rita Carlisle  
90 Lexington Ave., Apt. 11-A  
New York, NY 10016

**Oklahoma City**

John Crittenden  
3012 Rosewood Lane  
Oklahoma City, OK 73120

**Orlando-Central Florida**

Dick Endicott  
1125 Druid Rd.  
Maitland, FL 32751

**Piedmont (Greenville, SC)**

Tim Straus  
PO Box 2247  
Greenville, SC 29602

**St. Louis**

Cullen Wilson  
614 Clovertrail Dr.  
St. Louis, MO 63017

**Syracuse**

Edward S. Smith  
241-119 Lafayette Rd.  
Syracuse, NY 13205

**Sun Coast**

Pete Kurachek  
223-176th Ave., East  
Redington Shores, FL 33708

**SW Virginia (Roanoke)**

Jeff Lorch  
3246 Hastings Rd., SW  
Roanoke, VA 24018

**Washington DC**

Leo P. Warring  
4433 Cobalt Dr.  
Harwood, MD 20776

**San Francisco**

Elizabeth S. Ray  
PO Box 29366  
San Francisco, CA 94129

A list of in-state clubs is available from the University of Kentucky Alumni Association, Lexington, Ky. 40506-0119.



COACH JOE B. HALL

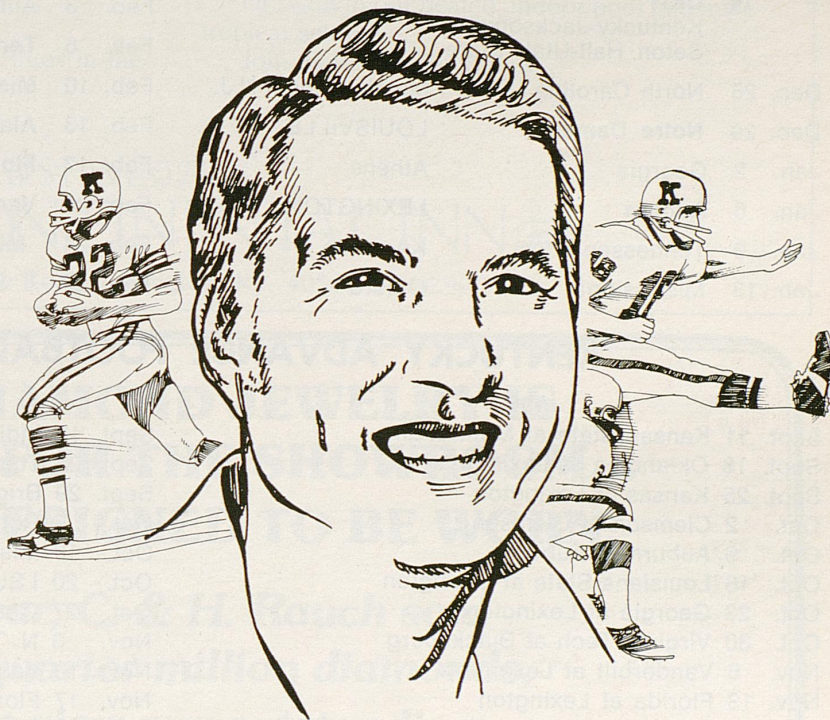
Fifth Annual  
**JOE B. HALL  
WILDCAT  
COACHING  
CLINIC**

(For coaches of all levels)  
Saturday  
November 7  
Lexington Center  
Ballroom

**Featuring Special Guests**

- Lute Olsen - Univ. of Iowa
- Morgan Wootten - De Matha H.S.
- Tom Creamer - Shelby Co. H.S.

FOR FREE BROCHURE WRITE:  
WILDCAT BASKETBALL CLINIC  
UNIVERSITY OF KENTUCKY  
LEXINGTON, KY. 40506  
OR CALL: (606) 257-1916



THE  
**FRAN CURCI**  
SHOW

- *Reviews of Wildcat Games*
- *Player Interviews*
- *Questions From Fans*

**36** MONDAY NIGHTS 8:30

## UK Football 1981

Nov. 7—Vanderbilt at Nashville; Nov. 14—Florida at Gainesville; Nov. 21—**Tennessee** at Lexington.

## UK Basketball 1981-82

DATE	OPPONENT	SITE	DATE	OPPONENT	SITE
Nov. 23	<b>Yugoslavia</b>	LEXINGTON	Jan. 16	<b>Alabama</b>	LEXINGTON
Nov. 28	<b>Akron</b>	LEXINGTON	Jan. 20	Florida	Gainesville
Dec. 5	Ohio State	Columbus	Jan. 23	<b>Vanderbilt</b>	LEXINGTON
Dec. 8	<b>Indiana</b>	LEXINGTON	Jan. 25	<b>LSU</b>	LEXINGTON
Dec. 12	Kansas	Lawrence	Jan. 27	Miss. State	Starkville
Dec. 18-19	<b>UKIT</b> Kentucky-Jacksonville Seton Hall-Utah State	LEXINGTON	Jan. 30	<b>Georgia</b>	LEXINGTON
Dec. 26	North Carolina	Meadowlands, N.J.	Feb. 3	Auburn	Auburn
Dec. 29	<b>Notre Dame</b>	LOUISVILLE	Feb. 6	<b>Tennessee</b>	LEXINGTON
Jan. 2	Georgia	Athens	Feb. 10	<b>Mississippi</b>	LEXINGTON
Jan. 6	<b>Auburn</b>	LEXINGTON	Feb. 13	Alabama	Tuscaloosa
Jan. 9	Tennessee	Knoxville	Feb. 17	<b>Florida</b>	LEXINGTON
Jan. 13	Mississippi	Oxford	Feb. 20	Vanderbilt	Nashville
			Feb. 24	<b>Miss. State</b>	LEXINGTON
			Feb. 27	L. S. U.	Baton Rouge

## KENTUCKY ADVANCE FOOTBALL SCHEDULE

### 1982

Sept. 11 Kansas State at Manhattan  
 Sept. 18 Oklahoma at Lexington  
 Sept. 25 Kansas at Lexington  
 Oct. 2 Clemson at Clemson  
 Oct. 9 Auburn at Auburn  
 Oct. 16 Louisiana State at Lexington  
 Oct. 23 Georgia at Lexington  
 Oct. 30 Virginia Tech at Blacksburg  
 Nov. 6 Vanderbilt at Lexington  
 Nov. 13 Florida at Lexington  
 Nov. 20 Tennessee at Knoxville

### 1983

Sept. 3 Central Michigan at Lexington  
 Sept. 10 Kansas State at Lexington  
 Sept. 17 Indiana at Lexington  
 Sept. 24 Tulane at Lexington  
 Oct. 1 Open Date  
 Oct. 8 Auburn at Lexington  
 Oct. 15 LSU (Away)  
 Oct. 22 Georgia (Away)  
 Oct. 29 Cincinnati at Lexington  
 Nov. 5 Vanderbilt (Away)  
 Nov. 12 Florida (Away)  
 Nov. 19 Tennessee at Lexington

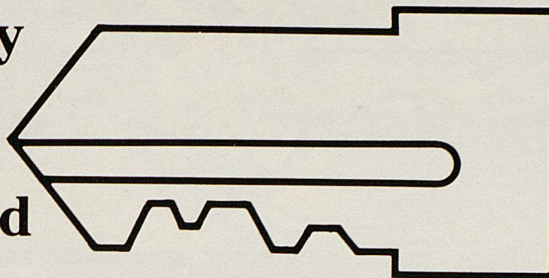
### 1984

Sept. 15 Indiana (Away)  
 Sept. 22 Tulane (Away)  
 Sept. 29 Brigham Young at Lexington  
 Oct. 6 Rutgers at Lexington  
 Oct. 13 Miss. State (Away)  
 Oct. 20 LSU at Lexington  
 Oct. 27 Georgia at Lexington  
 Nov. 3 N. Texas St. (Away)  
 Nov. 10 Vanderbilt at Lexington  
 Nov. 17 Florida at Lexington  
 Nov. 24 Tennessee (Away)

### 1985

Sept. 14 Bowling Green at Lexington  
 Sept. 21 Tulane at Lexington  
 Sept. 28 Cincinnati at Lexington  
 Oct. 5 Clemson at Lexington  
 Oct. 12 Mississippi State at Lexington  
 Oct. 19 LSU at Baton Rouge  
 Oct. 26 Georgia at Athens  
 Nov. 2 East Tenn. St. at Lexington  
 Nov. 9 Vanderbilt at Nashville  
 Nov. 16 Florida at Gainesville  
 Nov. 28 Tennessee at Lexington

Your Key  
To A  
Fun-Filled  
**Big Blue** Weekend



Celebrate a victory with dinner and dancing in the Americana Room...

Or, dance to the sounds of the Fifties in the Someplace Else Lounge.

Relax before the game in our Revere Lounge. Or swim in our heated, indoor pool in a lush, tropical setting.

Join us for Sunday Buffet.



801 New Circle Road, Lexington, Ky. 40505 (606)299-5281

**SOME DIAMOND JEWELRY IS  
DESIGNED FOR THE SHOWROOM...  
OURS IS DESIGNED TO BE WORN.**



*Last year, C. & H. Rauch sold  
one-quarter million diamonds.  
Come view our outstanding  
diamond collection, plus other  
elegant jewelry and gift items.*

*The Kentucky Jeweler*

**C. & H. RAUCH  
JEWELERS**

**3 Lexington Locations:  
South Park - Gardenside - Woodhill  
PLUS 14 Other Kentucky Locations**

Visa • Master Card • Layaway

**INC.**



# Stadium Information

**First Aid**—The University of Kentucky provides, for your convenience and welfare, First Aid Stations on the ground level on both sides of the stadium. On the West side is Room 156, the East side, Room 172. An ambulance is available at each corner of the stadium. Twenty doctors on duty are spotted in each section of the stadium and are easily accessible to Boy Scouts and ushers. Two golf cart ambulances are equipped for immediate aid and located on the second level on each side of the stadium. Persons with any type of chronic medical problem are requested to leave their name and seat location with the nurse on duty at either First Aid station. A person in need of assis-

tance with a health emergency should report the situation immediately to the nearest Boy Scout or usher.

**Cardiac Care**—In cooperation with the University Medical Services, the University of Kentucky provides a cardiac resuscitation program.

**Crowd Noise Penalty**—Uncontrolled crowd noise can result in a five yard penalty against your team. Please observe quarterback and official's signals for quiet.

**No Horns**—Horns are not permitted in Commonwealth Stadium and will be picked up at gates. Be

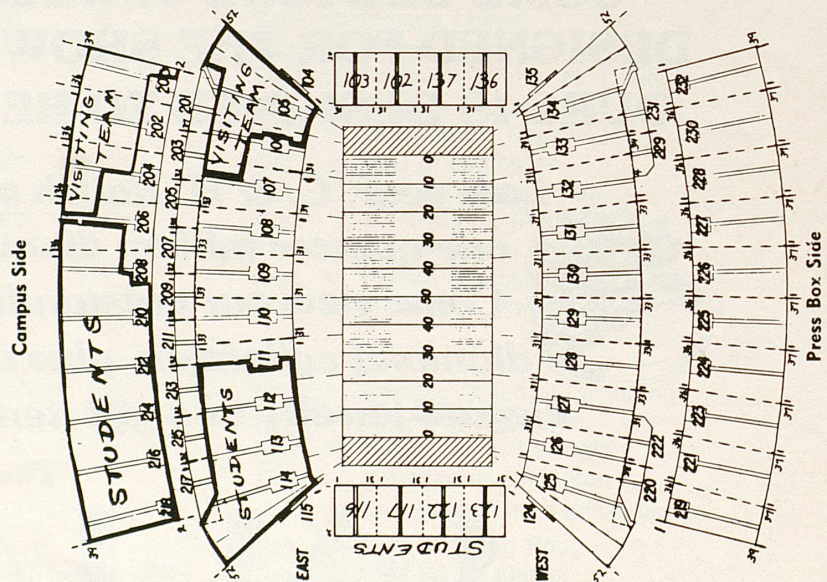
considerate and allow your neighbor to enjoy the game. Keep portable radios at a low volume.

**Liquors**—Alcoholic beverages are strictly prohibited within the stadium as are all food and drink containers including hard surfaced materials of any type, bottles, cans, thermos bottles, ice bags, ice chests, and any object related to above. Gate personnel are instructed to enforce this rule in the interest of safety.

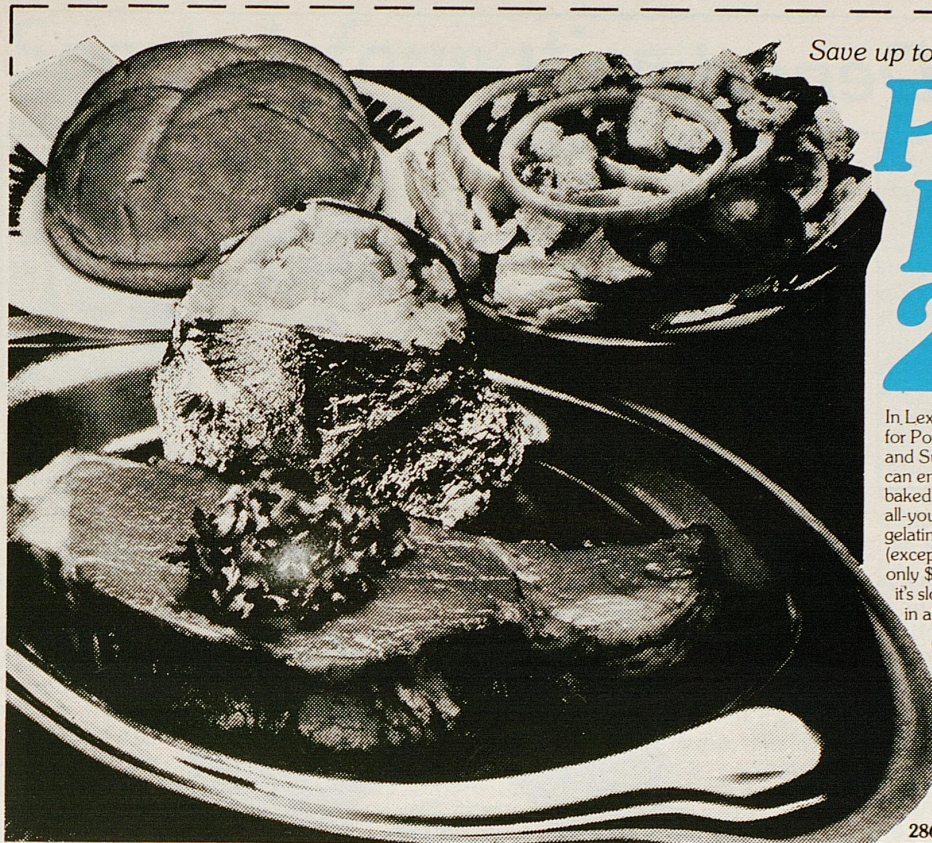
**Signs**—Signs and barriers are restricted for Commonwealth Stadium in accordance with University regulations and policies established by the Public Safety Division.

## General Ticket Policy for Stadium

- All persons must have a ticket.
- No pass out checks permitted at any gate.
- All sales final.
- Tickets cannot be refunded or replaced if lost, stolen or destroyed.
- The University of Kentucky Athletic Association reserves the right to revoke tickets by refund of purchase price.
- Holder of tickets to University of Kentucky athletic events agrees to abide by stadium and University policies.
- Tickets may not be sold on UK premises (parking lots, stadium grounds, etc.) except by authorized personnel.



Commonwealth Stadium Seating Chart



Save up to \$4.07 off Regular Price

# Prime Rib

Complete Treat

## 2 for \$9.99

WITH THIS AD PLUS TAX

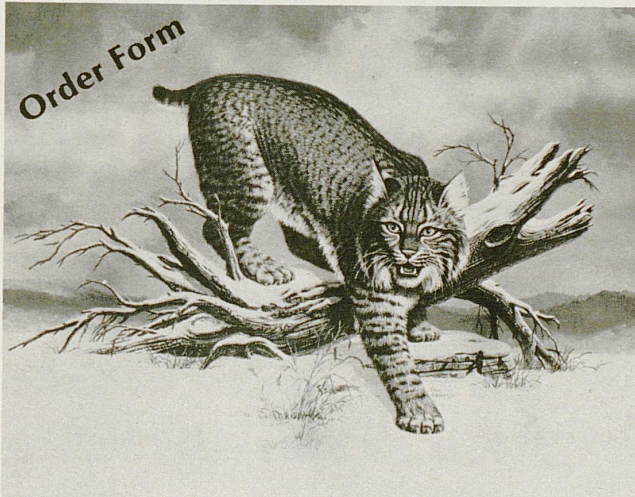
In Lexington, when you get hungry, head for Ponderosa. Every Friday, Saturday and Sunday you and someone special can enjoy a thick, juicy slice of Prime Rib, baked potato, warm roll with butter, all-you-can-eat-salad-bar, pudding or gelatin and your choice of beverage, (except milk) . . . two complete treats for only \$9.99. It's deliciously tender because it's slow cooked in a special oven to keep in all the flavor. . . and it's waiting just for you!

OFFER GOOD FRI-SAT-SUN  
Through November 29, 1981



286 Southland Dr. • 1316 Russell Cave Rd.

Order Form



# The Kentucky Wildcat

Send to:  
Wildcat Print  
University of Kentucky  
Alumni Association  
Lexington, Kentucky 40506

- Numbered prints @ \$35.00 each (Limited to 1,000 copies) \$ \_\_\_\_\_
- Regular edition prints @ \$25.00 each (Neither signed nor numbered; limited to 3,000 copies) \$ \_\_\_\_\_
- Sub Total \$ \_\_\_\_\_
- Ky. residents, add 5% Ky. Sales Tax \$ \_\_\_\_\_
- Packing, handling & postage @ 2.50 per print \$ \_\_\_\_\_
- TOTAL \$ \_\_\_\_\_

Check or money order enclose (make payable to UK Alumni Association)

Charge to (please circle):  Master Charge  Visa

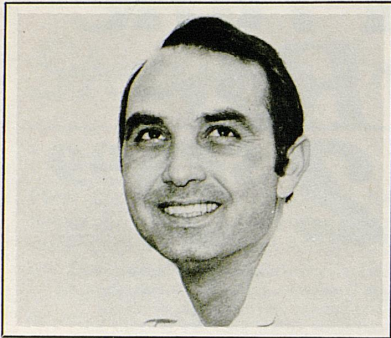
Charge Card Number: \_\_\_\_\_ Card Expiration Date: \_\_\_\_\_

(Name) \_\_\_\_\_

(Address) \_\_\_\_\_

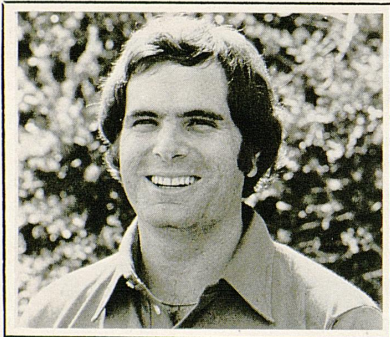
(City) \_\_\_\_\_ (State) \_\_\_\_\_ (Zip) \_\_\_\_\_

# Athletics Department



**DAN LEAL**  
Chief Recruiter

A native of Oakmont, Pa., as is Fran Curci, Dan played linebacker and halfback in high school there, and graduated from Gannon College in Erie, Pa. He spent eight years with Spang & Co. in Butler, Pa., before coming to UK as Curci's chief recruiter. He had served as unofficial recruiter for Curci in the Pittsburgh area since Curci started coaching and recruiting in the college ranks.



**AL GREEN**  
Head Trainer

Green came to the University in 1979 after serving five years as first-assistant at the University of Michigan. A native of Brooklyn, he attended John F. Kennedy High School in Bellmore, N. Y. and Lea College in Minnesota where he was trainer two years before transferring to U. M. He was graduate trainer at U. M. in 1973 before accepting a similar post at Arizona, returning to U. M. in 1974. He is married to the former Laurel Anne Kudla of Nutley, N. J. They have a son, Douglas.

**TOM KALINOWSKI**  
Equipment Manager

A native of Middletown, Conn., Tom was manager of the football, basketball and baseball teams at Xavier High School. He served as student manager for the Wildcat football team, moved up to assistant equipment manager in 1977 and equipment manager in 1979.

**WALT MCCOMBS**  
Associate Trainer

McCombs first joined the UK staff in 1972 and returned in 1977 after a three-year stint at Clemson. A native of Belton, S. C.,



Kalinowski



McCombs

he is a 1971 graduate of The Citadel, where he was student trainer four years. Married to the former Shelby Burriss of Belton, they have two daughters, Crystal and Emily.



## HELP

Help out your next party. Serve the gentle breed of brandy. Almadén. It goes well with soda, juices, cream—or by itself. Almadén Brandy is gentle enough to mix with any crowd.

**ALMADÉN BRANDY**  
*The Gentle Breed.*

Almadén Brandies, Kingsburg, California Brandy, 80 proof.  
©Almadén Vineyards, Inc. 1978 • San Jose, California





## Sports Information

### RUSSELL RICE

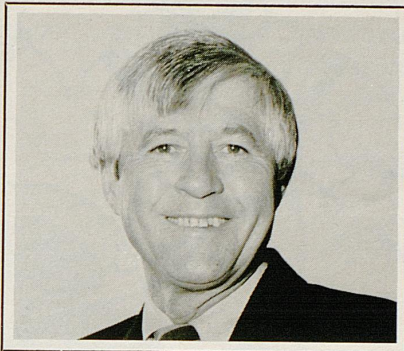
Sports Information Staff Director

Russell Rice was named sports information director at U.K. in May, 1969, after serving two years as assistant to Ken Kuhn, who retired after more than two decades of service with the University. Rice came to the Wildcats from **The Lexington Leader**, where he was a general reporter eight years and sports editor five years. A native of Paintsville, Ky., he won letters in football, basketball and baseball at Van Lear High, served with the U.S. Marines in World War II, attended Kentucky Wesleyan College and received his bachelor's at the University of Kentucky in 1951.

He has served as manager of the NCAA Mid-East Basketball Tournament (1969), and chairman of the Basketball Hall of Fame Committee of the College Sports Information Directors Association and was recipient of the 1971 Churchmen's "Sportswriter of the Year" award.

As a newspaperman, his duties ranged from agricultural hearings

in Washington to spending three months as the traveling companion to a Kentucky gubernatorial candidate. He reported the activities of

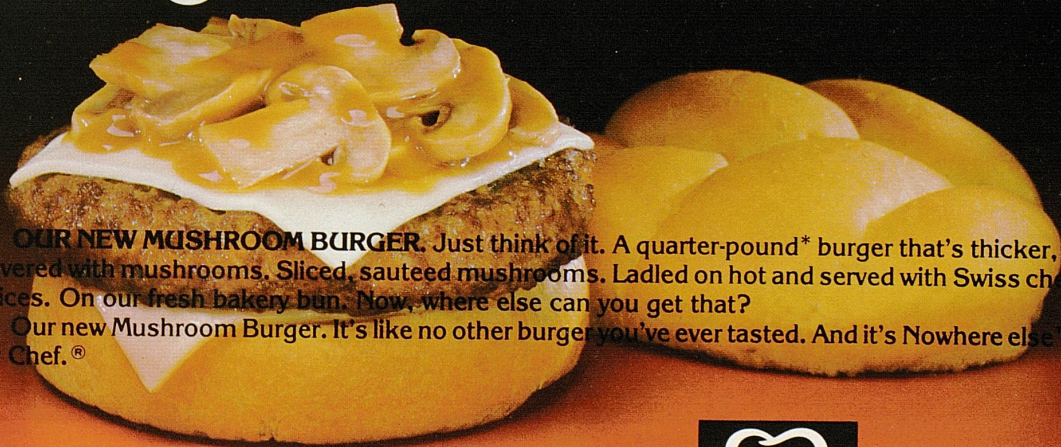


such Wildcat teams as football coach Charlie Bradshaw's "Thin Thirty" and "The Runts" of basketball coach Adolph Rupp. He is a former Kentucky area correspondent for **Time-Life-Fortune** magazines and was Kentucky editor of **Tobacco Magazine** and Religious

News Service.

For the past 13 years, he has pursued a hobby of researching Kentucky basketball and football. He authored "The Wildcats: A Story of Kentucky Football," and "The Big Blue Machine: A Story of Kentucky Basketball." His latest work is the Kentucky portion of a "History of the Southeastern Conference," updates of "The Wildcats" and "Big Blue Machine," and a new work to be published in November. He edits the K-Men's Newsletter and has been named an honorary member of that organization. He also was honored by WAVE-TV for "Outstanding Contribution to Televised Sports." He was the first member of the Southeastern Conference Publicity Directors Association to be elected to a two-year term (1977-78) and recently completed his second year as president of the Blue Grass (Kentucky) chapter of the U. S. Harness Writers Association, which was organized in 1977.

## Where can you get a thicker burger with mushrooms?



**OUR NEW MUSHROOM BURGER.** Just think of it. A quarter-pound\* burger that's thicker, juicy and covered with mushrooms. Sliced, sautéed mushrooms. Ladled on hot and served with Swiss cheese. Two slices. On our fresh bakery bun. Now, where else can you get that?

Our new Mushroom Burger. It's like no other burger you've ever tasted. And it's Nowhere else™ but Burger Chef.®

Nowhere else™



Campus Burger Chef is located on the Avenue of Champions corner of Euclid and Rose

The University of Kentucky  
(continued from page 5)

a 400-seat recital hall, a 1,500-seat concert hall and the UK Art Museum which is open daily except Monday from Noon to 5 p.m.

UK's Albert B. Chandler Medical Center has a wide range of programs in education and research. The five colleges of the Medical Center — Medicine, Dentistry, Nursing, Pharmacy and Allied Health — have more than 2,000 students pursuing bachelor, masters and doctoral degrees in health-related fields.

Of major significance in the area of medical research is the Sanders-Brown Research Center on Aging, one of the first facilities of its kind in the nation.



UK graduates almost 6,000 students each year from the main campus and the community colleges. The UK Alumni Association, therefore, continues to grow in number of clubs (64) and paid members (22,000). Besides the 34 clubs in Kentucky, there are 30 organized alumni groups outside the state from Los Angeles to New York.

For old alums and other visitors to the University, there's a tour of the UK campus any weekday on a double-decker bus, "Old Blue." The free, guided tour of the campus departs each Monday through Friday at 2 p.m. from near the Administration Building.

The University of Kentucky has had only eight presidents since its founding in 1865. Dr. Otis Singletary, now in his 13th year as UK president, is a history scholar and nationally-recognized university administrator.

**TOUCHDOWN!**

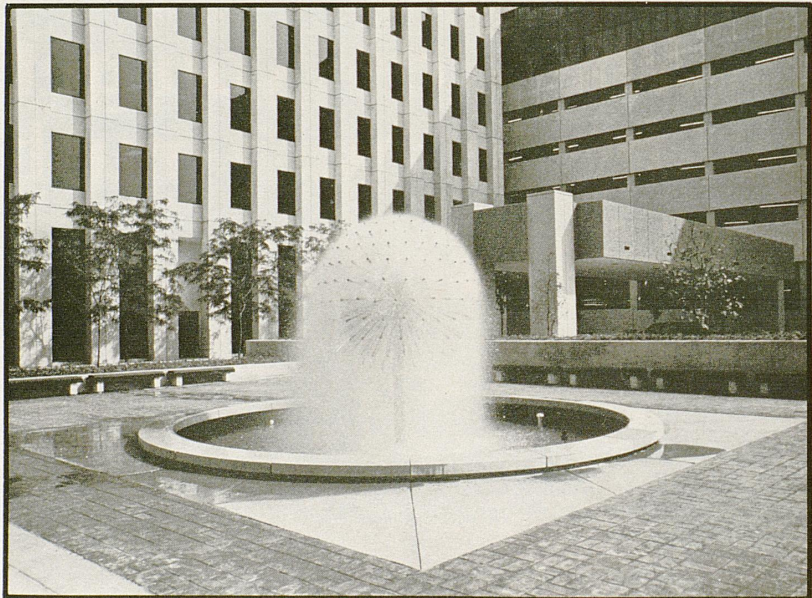
**Q.** If low prices are equivalent to a touchdown—what's the 2-point conversion?

**A.** SERVICE—and smiles!

**FOODTOWN**

SUPER MARKETS

Serving Central Kentucky



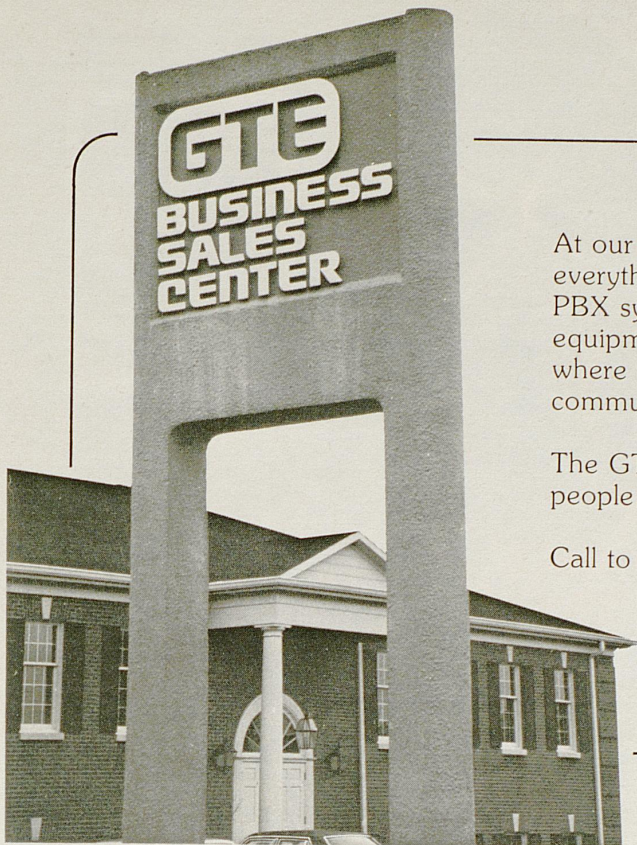
**FS FIRST SECURITY**  
NATIONAL BANK & TRUST COMPANY

**WHEN YOU NEED MORE FROM A BANK™**

ONE FIRST SECURITY PLAZA LEXINGTON, KENTUCKY 40507 PHONE (606) 231-1000

Member FDIC Equal Housing Lender





At our Business Sales Center, you'll find everything in telecommunications. . . . Key and PBX systems, intercoms, data communications equipment. . . . and much more. It's a showroom where you can try for yourself the latest in communications equipment and services.

The GTE Business Sales Center--for business people. . . .

Call to arrange a visit (606) 268-9111.

**GTE**  
General Telephone

### Introducing Our Interior Design Consultants

Knowledge gathered through years of experience allows our consultants to expertly guide you in planning your interiors. Our extensive upholstery fabric selection, wall covering samples and furniture design examples will aid in creating interior designs most suitable to your lifestyle.

Visit our showrooms and greet our design consultants. You'll find us to be a discerning investment in quality.

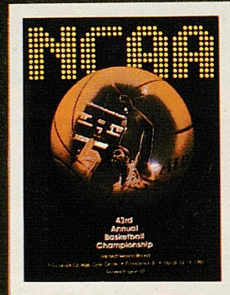
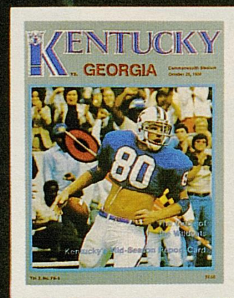
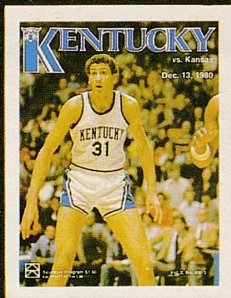
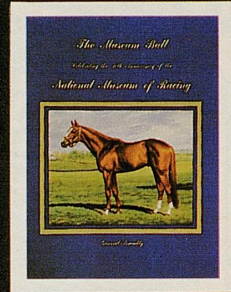
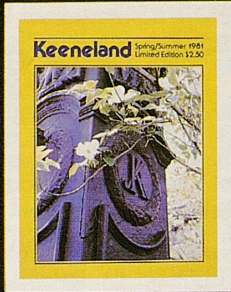


William E. Hellard  
Nancy Nickell Lawrence  
Carolyn Savage Threlkeld

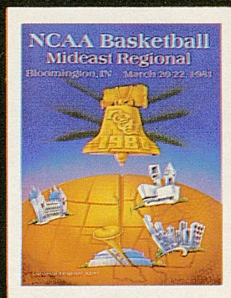
**Heingsmith**

868 East High St. • Chevy Chase Place • Lexington, Ky. 40502 • (606) 269-7339

# A Touch Of Class



When considering  
your next  
Publication . . .



Join our other  
proven  
winners

# The Thoroughbred Dress Inc.

904 North Broadway

Lexington, Kentucky 40505

*Long John Silver's*<sup>®</sup>

# Winning Combination





Night Falls  
Champions Graze  
Dreams are Realized

Make your dreams a reality with  
a Tom Gentry yearling.

From Keeneland's Leading Consignor (with 6-1980 Stakes Winners)  
and World Record Holder.