



Listen up

Fresh voices

"I like the freedom of living in the dorms. I stayed out until three in the morning my first night here."

— Laine Comley, undecided freshman.

"The dorms are very pleasant and large. The campus is also very friendly."

— Makato Itogo, a political science freshman.

The vitals**Deadlines, Deadlines, Deadlines**

- Tuition and fees must be paid by Wednesday, Aug. 26.
- Add/drop starts on the first day of classes, Wednesday, Aug. 26 and runs until Wednesday, Sept. 2.
- Last day to drop a class without receiving a "W": Wednesday, Sept. 16.
- Last day to withdraw from a class without receiving an incomplete or failing grade: Wednesday, Oct. 23.
- To the sophomores, juniors and seniors who didn't register during their priority registration period last spring, breathe easier: You can register between Aug. 26 and Sept. 2 but will be charged a \$40 late fee. Students can pay this fee when paying their tuition and fees for the semester.
- All undergraduates who register during this period must also have their adviser holds lifted before they can register. Want more info? Call the Registrar's Office at 257-3161.

Sites**Getting Connected**

To find out what classes are still open, go to <http://www.uky.edu/Registrar/schedule.html>. This site allows students to access information about classes using the class name or course number.

THE 411**Weekend Forecast**

85 60
Hi Lo

Warm and sunny Saturday, cool tonight. Sunday, much the same.

Kentucky Kernel

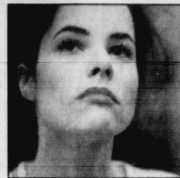
VOL. #104 ISSUE #001

ESTABLISHED IN 1892
INDEPENDENT SINCE 1971**News tips?**

Call: 257-1915 or write:
kernel@pop.uky.edu

ADD/DROP KENTUCKY KERNEL

August 21, 1998

<http://www.kykernel.com>

Also inside...

Parker Posey stars in the film 'Henry Fool'... 1B

Au revoir, old friend

The 'old Kernel' is no longer with us, but our mission hasn't changed a bit



PHOTO ILLUSTRATION BY HORIE HILIER, CHRIS ROSENTHAL | KERNEL STAFF

Four years and hundreds of issues later, the old Kentucky Kernel lies adorned with flowers laid by staff members at a funeral Wednesday morning in Lexington Cemetery.

A time for change: After a summer at the drawing board, newspaper staff brings new look, new attitude to students

By Mat Herron
EDITOR IN CHIEF

Funny the places you're at when you decide to change a college paper that's been around for more than a century.

At a Holiday Inn in Cincinnati last May, I had already managed to spill coffee and water on my trench coat while listening to a designer give us the lowdown on what newspapers,

collegiate and professional, should be doing.

Now, after trying to do in three months what most papers do in a year, I say redesigning a college paper is, to put it bluntly, a pain in the ass.

After about the 50th meeting, you begin to wonder why you ever agreed to do it in the first place.

The critical issues abound: why the Kernel exists, who our audience should

be the best way to get our message across and all that other heavy philosophical stuff journalists take time to ask other people, but not themselves.

We didn't change the Kernel because the old look was horrid. That design — like this one — was invigorating. And I've got a hunch this revamped product will, like the last redesign, reconnect the students to their newspaper.

We didn't change it because the fonts looked prettier than the ones used last year and every year since 1994.

We did it for us, but more importantly, for the students.

Whether you're the freshman who's lugging a hundred-pound suitcase up to a dorm room on the top floor of Blanding Tower, or a seasoned graduate student working on their MBA.

Or whether you think the Kernel is a great source of info. Or if it's just a rag you pick up on Monday and throw in the bird cage on Friday.

This new look, new attitude and new ethic allows us to reflect the campus community, something all papers should strive for, and after all the self-analysis we went through to make this product more reader-friendly.

It's been well worth the ride.

1998 Fall Schedule Update

The number of available seats is noted in the column following the section number. An asterisk (*) indicates that the section has five or fewer seats available.

Course sections that have the letter C immediately after the number of available seats have controlled enrollment. You must get special permission from the offering department in order to enroll in a course with controlled enrollment.

Course sections that have the letter S immediately after the number of available seats are reserved for students in special programs and are not available to students who are not part of that program.

ADDED COURSES

06555	AEC 445	002	3	0	TBA		
06556	AEC 645	002	2	3	TBA		
06741	AH 625	001	3	3	TBA		
06718	AED 779	001	4	3	TBA		
12545	ANA 660	001	5	3	TBA		
06619	ARC 501	001	5	3	TBA		
06620	ARC 812	001	5	3	TBA		
06533	ARC 820	010	25	3	TBA		
06532	ARC 820	011	25	3	TBA		
06534	ARC 821	011	25	3	TBA		
06535	ARC 822	011	25	3	TBA		
06536	ARC 822	011	25	3	TBA		
06537	ARC 823	011	25	3	TBA		
06538	ARC 823	011	25	3	TBA		
06539	ARC 824	011	25	3	TBA		
06540	ARC 824	011	25	3	TBA		
06541	ARC 825	011	25	3	TBA		
06542	ARC 825	011	25	3	TBA		
06543	ARC 826	011	25	3	TBA		
06544	ARC 826	011	25	3	TBA		
06545	ARC 827	011	25	3	TBA		
06546	ARC 827	011	25	3	TBA		
06547	ARC 828	011	25	3	TBA		
06548	ARC 828	011	25	3	TBA		
06549	ARC 829	011	25	3	TBA		
06550	ARC 829	011	25	3	TBA		
06551	ARC 830	011	25	3	TBA		
06552	ARC 830	011	25	3	TBA		
06553	ARC 831	011	25	3	TBA		
06554	ARC 831	011	25	3	TBA		
06555	ARC 832	011	25	3	TBA		
06556	ARC 832	011	25	3	TBA		
06557	ARC 833	011	25	3	TBA		
06558	ARC 833	011	25	3	TBA		
06559	ARC 834	011	25	3	TBA		
06560	ARC 834	011	25	3	TBA		
06561	ARC 835	011	25	3	TBA		
06562	ARC 835	011	25	3	TBA		
06563	ARC 836	011	25	3	TBA		
06564	ARC 836	011	25	3	TBA		
06565	ARC 837	011	25	3	TBA		
06566	ARC 837	011	25	3	TBA		
06567	ARC 838	011	25	3	TBA		
06568	ARC 838	011	25	3	TBA		
06569	ARC 839	011	25	3	TBA		
06570	ARC 839	011	25	3	TBA		
06571	ARC 840	011	25	3	TBA		
06572	ARC 840	011	25	3	TBA		
06573	ARC 841	011	25	3	TBA		
06574	ARC 841	011	25	3	TBA		
06575	ARC 842	011	25	3	TBA		
06576	ARC 842	011	25	3	TBA		
06577	ARC 843	011	25	3	TBA		
06578	ARC 843	011	25	3	TBA		
06579	ARC 844	011	25	3	TBA		
06580	ARC 844	011	25	3	TBA		
06581	ARC 845	011	25	3	TBA		
06582	ARC 845	011	25	3	TBA		
06583	ARC 846	011	25	3	TBA		
06584	ARC 846	011	25	3	TBA		
06585	ARC 847	011	25	3	TBA		
06586	ARC 847	011	25	3	TBA		
06587	ARC 848	011	25	3	TBA		
06588	ARC 848	011	25	3	TBA		
06589	ARC 849	011	25	3	TBA		
06590	ARC 849	011	25	3	TBA		
06591	ARC 850	011	25	3	TBA		
06592	ARC 850	011	25	3	TBA		
06593	ARC 851	011	25	3	TBA		
06594	ARC 851	011	25	3	TBA		
06595	ARC 852	011	25	3	TBA		
06596	ARC 852	011	25	3	TBA		
06597	ARC 853	011	25	3	TBA		
06598	ARC 853	011	25	3	TBA		
06599	ARC 854	011	25	3	TBA		
06600	ARC 854	011	25	3	TBA		
06601	ARC 855	011	25	3	TBA		
06602	ARC 855	011	25	3	TBA		
06603	ARC 856	011	25	3	TBA		
06604	ARC 856	011	25	3	TBA		
06605	ARC 857	011	25	3	TBA		
06606	ARC 857	011	25	3	TBA		
06607	ARC 858	011	25	3	TBA		
06608	ARC 858	011	25	3	TBA		
06609	ARC 859	011	25	3	TBA		
06610	ARC 859	011	25	3	TBA		
06611	ARC 860	011	25	3	TBA		
06612	ARC 860	011	25	3	TBA		
06613	ARC 861	011	25	3	TBA		
06614	ARC 861	011	25	3	TBA		
06615	ARC 862	011	25	3	TBA		
06616	ARC 862	011	25	3	TBA		
06617	ARC 863	011	25	3	TBA		
06618	ARC 863	011	25	3	TBA		
06619	ARC 864	011	25	3	TBA		
06620	ARC 864	011	25	3	TBA		
06621	ARC 865	011	25	3	TBA		
06622	ARC 865	011	25	3	TBA		
06623	ARC 866	011	25	3	TBA		
06624	ARC 866	011	25	3	TBA		
06625	ARC 867	011	25	3	TBA		
06626	ARC 867	011	25	3	TBA		
06627	ARC 868	011	25	3	TBA		
06628	ARC 868	011	25	3	TBA		
06629	ARC 869	011	25	3	TBA		
06630	ARC 869	011	25	3	TBA		
06631	ARC 870	011	25	3	TBA		
06632	ARC 870	011	25	3	TBA		
06633	ARC 871	011	25	3	TBA		
06634	ARC 871	011	25	3	TBA		
06635	ARC 872	011	25	3	TBA		
06636	ARC 872	011	25	3	TBA		
06637	ARC 873	011	25	3	TBA		
06638	ARC 873	011	25	3	TBA		
06639	ARC 874	011	25	3	TBA		
06640	ARC 874	011	25	3	TBA		
06641	ARC 875	011	25	3	TBA		
06642	ARC 875	011	25	3	TBA		
06643	ARC 876	011	25	3	TBA		
06644	ARC 876	011	25	3	TBA		
06645	ARC 877	011	25	3	TBA		
06646	ARC 877	011	25	3	TBA		
06647	ARC 878	011	25	3	TBA		
06648	ARC 878	011	25	3	TBA		
06649	ARC 879	011	25	3	TBA		
06650	ARC 879	011	25	3	TBA		
06651	ARC 880	011	25	3	TBA		
06652	ARC 880	011	25	3	TBA		
06653	ARC 881	011	25	3	TBA		
06654	ARC 881	011	25	3	TBA		
06655	ARC 882	011	25	3	TBA		
06656	ARC 882	011	25	3	TBA		
06657	ARC 883	011	25	3	TBA		
06658	ARC 883	011	25	3	TBA		
06659	ARC 884	011	25	3	TBA		
06660	ARC 884	011	25	3	TBA		
06661	ARC 885	011	25	3	TBA		
06662	ARC 885	011	25	3	TBA		
06663	ARC 886	011	25	3	TBA		
06664	ARC 886	011	25	3	TBA		
06665	ARC 887	011	25	3	TBA		
06666	ARC 887	011	25	3	TBA		
06667	ARC 888	011	25	3	TBA		
06668	ARC 888	011	25	3	TBA		
06669	ARC 889	011	25	3	TBA		
06670	ARC 889	011	25	3	TBA		
06671	ARC 890	011	25	3	TBA		
06672	ARC 890	011	25	3	TBA		
06673	ARC 891	011	25	3	TBA		
06674	ARC 891	011	25	3	TBA		
06675	ARC 892	011	25	3	TBA		
06676	ARC 892	011	25	3	TBA		
06677	ARC 893	011	25	3	TBA		
06678	ARC 893	011	25	3	TBA		
06679	ARC 894	011	25	3	TBA		
06680	ARC 894	011	25	3	TBA		
06681	ARC 895	011	25	3	TBA		
06682	ARC 895	011	25	3	TBA		
06683	ARC 896	011	25	3	TBA		
06684	ARC 896	011	25	3	TBA		
06685	ARC 897	011	25	3	TBA		
06686	ARC 897	011	25	3	TBA		
06687	ARC 898	011	25	3	TBA		
06688	ARC 898	011	25	3	TBA		
06689	ARC 899	011	25	3	TBA		
06690	ARC 899	011	25	3	TBA		
06691	ARC 900	011	25	3	TBA		
06692	ARC 900	011	25	3	TBA		
06693	ARC 901	011	25	3	TBA		
06694	ARC 901	011	25	3	TBA		
06695	ARC 902	011	25	3	TBA		
06696	ARC 902	011	25	3	TBA		
06697	ARC 903	011	25	3	TBA		
06698	ARC 903	011	25	3	TBA		
06699	ARC 904	011	25	3	TBA		
06700	ARC 904	011	25	3	TBA		

06590	GLY 110	008	4	3	TBA		
06591	GLY 115	001	16	1	F		
06592	GLY 120	001	102	3	TBA		
06593	GLY 130	001	102	3	TBA		
06594	GLY 200	01	4	3	TBA		
06606	GLY 670	401	8	3	TBA		
06607	GLY 670	401	8	3	TBA		
06608	GLY 670	401	8	3	TBA		
06609	GLY 670	401	8	3	TBA		
06610	GLY 670	401	8	3	TBA		
06611	GLY 670	401	8	3	TBA		
06612	GLY 670	401	8	3	TBA		
06613	GLY 670	401	8	3	TBA		
06614	GLY 670	401	8	3	TBA		
06615	GLY 670	401	8	3	TBA		
06616	GLY 670	401	8	3	TBA		
06617	GLY 670	401	8	3	TBA		
06618	GLY 670	401	8	3	TBA		
06619	GLY 670	401	8	3	TBA		
06620	GLY 670	401	8	3	TBA		
06621	GLY 670	401	8	3	TBA		
06622	GLY 670	401	8	3	TBA		
06623	GLY 670	401	8	3	TBA		
0662							

Table of horse racing results for various tracks including 0630 SW 722 402 3', 0540B SW 741 403 3', and 06417 SW 751 401 2'. Includes columns for track, time, and race details.

Table of horse racing results for various tracks including 0200PM 0550PM, 0200PM 0430PM, 0200PM 0550PM, and 0200PM 0630PM. Includes columns for track, time, and race details.

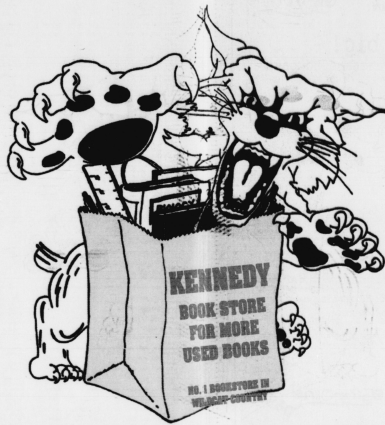
Advertisement for 'Better Packs, Better Pizza.' featuring Papa John's, Jansport backpacks, and Timberland shoes. Includes text: 'Buy any bookbag, get a Papa John's Pizza free!', 'FREE! Large, 1 topping pizza, carryout only, with purchase of any bookbag.', 'JANSPORT ON SALE', 'EASTPAK ON SALE', and 'PHILIPPA'S Birkenstock. Great Selection 10% OFF!'.

KENNEDY BOOK STORE

FOR MORE USED BOOKS

Save 25%

OR MORE!



If Saving
Money Is
Your Bag, Be
Sure To Get
Ours.

Your Source for *official* UK Textbooks since 1950

252-0331

Corner of S. Limestone and Euclid
"We've Got The Corner on Savings"

Open Sunday 11-5
And Extended Hours
This Week

<http://www.kennedys.com>



01750 EDS 550 001 2* S 6.0 TBA	0400PM 0630PM	01835 EDV 749 001 100	0.0 TBA
01751 EDS 558 001 2* S 3.0 TBA		01836 EDV 749 001 100	0.0 TBA
06744 EDS 558 002 6 1.0 TBA		01837 EE 101 001 81	1.0 R
01754 EDS 558 001 16 S 3.0 M	0400PM 0600PM	01838 EE 211 001 4*	4.0 TR
06771 EDS 600 201 25 3.0 W	0730PM 1000PM	01839 EE 211 002 12	2.0 W
06078 EDS 600 203 10 3.0 W	0730PM 1000PM	01840 EE 221 001 41	3.0 TR
06079 EDS 600 203 10 3.0 W	0730PM 1000PM	01842 EE 222 002 4*	2.0 T
06081 EDS 600 205 8 3.0 W	0730PM 1000PM	01843 EE 222 003 8	2.0 W
06090 EDS 600 206 10 3.0 W	0730PM 1000PM	01844 EE 222 004 11	2.0 W
01755 EDS 601 201 2* 3.0 M	0730PM 1000PM	06740 EE 305 201 43	3.0 MW
06730 EDS 601 203 5* 3.0 M	0730PM 1000PM	01848 EE 307 001 15	1.5 S
06741 EDS 601 203 5* 3.0 M	0730PM 1000PM	06811 EE 307 001 15	1.5 S
06742 EDS 601 204 5* 3.0 M	0730PM 1000PM	01849 EE 380 001 22	2.2 M
06743 EDS 601 205 5* 3.0 M	0730PM 1000PM	01851 EE 385 001 10	1.0 TBA
06744 EDS 601 206 5* 3.0 M	0730PM 1000PM	01852 EE 402 001 8	0.8 TBA
01757 EDS 602 201 2* 3.0 R	0730PM 1000PM	01853 EE 415 001 52	3.0 MWF
01758 EDS 602 202 2* 3.0 R	0730PM 1000PM	01854 EE 415 001 1*	1.0 T
01759 EDS 602 203 2* 3.0 R	0730PM 1000PM	01855 EE 416 002 3*	3.0 T
01760 EDS 602 204 2* 3.0 R	0730PM 1000PM	01856 EE 416 003 2*	2.0 T
01761 EDS 602 205 2* 3.0 R	0730PM 1000PM	01857 EE 421 001 38	3.8 MWF
01762 EDS 602 206 2* 3.0 R	0730PM 1000PM	01858 EE 425 001 44	4.4 MWF
01763 EDS 602 207 2* 3.0 R	0730PM 1000PM	01859 EE 461 001 50	5.0 TR
01764 EDS 602 401 14 3.0 W	0430PM 0700PM	01860 EE 465 001 7	0.7 W
01765 EDS 603 001 7 3.0 W	0600PM 0830PM	01861 EE 465 002 1*	1.0 T
01766 EDS 610 401 10 3.0 TBA		01862 EE 465 003 1*	1.0 T
01767 EDS 612 001 14 3.0 TBA		01863 EE 465 004 6	6.0 W
01768 EDS 612 002 20 3.0 TBA		01864 EE 489 001 57	5.7 M
01769 EDS 612 003 20 3.0 TBA		01865 EE 481 001 8	0.8 T
06098 EDS 612 004 19 3.0 TBA		01866 EE 481 002 8	0.8 T
01770 EDS 612 005 20 3.0 TBA		01867 EE 481 003 10	2.0 T
01771 EDS 612 006 20 3.0 TBA		01868 EE 499 002 6	0.6 T
01772 EDS 612 007 20 3.0 TBA		01869 EE 499 003 3*	3.0 MWF
01773 EDS 612 008 19 3.0 TBA		01870 EE 518 001 27	3.0 TR
01774 EDS 612 009 15 3.0 TBA		01871 EE 527 001 14	1.4 M
01775 EDS 612 010 15 3.0 TBA		06226 EE 525 001 15	3.0 TR
01776 EDS 612 011 20 3.0 TBA		01872 EE 527 001 14	1.4 M
01777 EDS 616 001 29 3.0 W	0600PM 0730PM	01873 EE 527 001 29	3.0 MWF
02770 EDS 620 201 28 3.0 W	0730PM 1000PM	01874 EE 562 001 30	3.0 TR
06083 EDS 620 202 30 3.0 W	0730PM 1000PM	01880 EE 568 001 3*	3.0 TR
06084 EDS 620 203 30 3.0 W	0730PM 1000PM	01882 EE 571 001 30	3.0 MW
06085 EDS 620 204 29 3.0 W	0730PM 1000PM	01883 EE 581 001 3	0.3 MWF
06086 EDS 620 205 29 3.0 W	0730PM 1000PM	01884 EE 581 001 11	1.1 TBA
01778 EDS 620 401 12 3.0 W	0730PM 1000PM	01885 EE 595 001 11	1.1 C
01779 EDS 623 001 20 3.0 TBA	0430PM 0700PM	01886 EE 595 001 11	1.1 C
01780 EDS 623 001 20 3.0 TBA	0430PM 0700PM	01887 EE 595 001 11	1.1 C
01781 EDS 623 001 20 3.0 TBA	0430PM 0700PM	01888 EE 595 001 11	1.1 C
01782 EDS 623 001 20 3.0 TBA	0430PM 0700PM	01889 EE 611 001 29	3.0 MWF
05757 EDS 632 001 28 1.0 TBA		01890 EE 621 001 22	3.0 TR
05758 EDS 632 001 21 1.0 TBA		01901 EE 630 001 17	3.0 MWF
05759 EDS 640 001 8 3.0 W	0430PM 0700PM	06748 EE 635 002 14	3.0 MWF
01790 EDS 643 001 18 3.0 R	0430PM 0700PM	06932 EE 642 002 4*	4.0 MWF
01791 EDS 647 001 12 3.0 TBA		01904 EE 695 001 6	0.6 MWF
05763 EDS 648 201 2* 3.0 M	0600PM 0830PM	01905 EE 749 001 17	1.7 TBA
05764 EDS 648 202 2* 3.0 M	0600PM 0830PM	01906 EE 749 001 17	1.7 TBA
05765 EDS 648 203 3* 3.0 M	0600PM 0830PM	01907 EE 768 001 12	1.2 TBA
05766 EDS 648 204 3* 3.0 M	0600PM 0830PM	01908 EE 768 001 14	1.4 TBA
05767 EDS 648 205 5* 3.0 M	0600PM 0830PM	01909 EE 768 001 14	1.4 TBA
05768 EDS 648 206 5* 3.0 M	0600PM 0830PM	01910 EE 768 001 14	1.4 TBA
05769 EDS 648 207 5* 3.0 M	0600PM 0830PM	01911 EGR 399 001 57	1.0 TBA
05770 EDS 648 208 5* 3.0 M	0600PM 0830PM	01912 EGR 401 001 18	1.8 TBA
05771 EDS 648 209 5* 3.0 M	0600PM 0830PM	01913 EGR 537 001 4*	4.0 MWF
05772 EDS 648 210 5* 3.0 M	0600PM 0830PM	01914 EGR 537 002 1*	1.0 T
05773 EDS 648 211 5* 3.0 M	0600PM 0830PM	01915 EGR 537 002 1*	1.0 T
05774 EDS 648 212 5* 3.0 M	0600PM 0830PM	01916 EM 221 001 3*	3.0 TR
05775 EDS 648 213 5* 3.0 M	0600PM 0830PM	01917 EM 221 001 18	1.8 MWF
05776 EDS 648 214 5* 3.0 M	0600PM 0830PM	01918 EM 221 003 18	3.0 TR
05777 EDS 648 215 5* 3.0 M	0600PM 0830PM	01919 EM 221 003 18	3.0 TR
05778 EDS 648 216 5* 3.0 M	0600PM 0830PM	01920 EM 302 001 3*	3.0 MWF
05779 EDS 648 217 5* 3.0 M	0600PM 0830PM	01921 EM 302 001 15	1.5 MWF
05780 EDS 648 218 5* 3.0 M	0600PM 0830PM	01922 EM 302 001 15	1.5 MWF
05781 EDS 648 219 5* 3.0 M	0600PM 0830PM	01923 EM 302 001 15	1.5 MWF
05782 EDS 648 220 5* 3.0 M	0600PM 0830PM	06930 EM 302 001 15	1.5 MWF
05783 EDS 648 221 5* 3.0 M	0600PM 0830PM	01924 EM 313 001 8	0.8 MWF
05784 EDS 648 222 5* 3.0 M	0600PM 0830PM	01925 EM 313 001 19	1.9 MWF
05785 EDS 648 223 5* 3.0 M	0600PM 0830PM	06030 EM 527 001 10	3.0 MWF
05786 EDS 648 224 5* 3.0 M	0600PM 0830PM	01926 EM 531 001 21	3.0 TR
05787 EDS 648 225 5* 3.0 M	0600PM 0830PM	01927 EM 556 001 4*	4.0 TR
05788 EDS 648 226 5* 3.0 M	0600PM 0830PM	01930 EM 601 001 10	3.0 TR
05789 EDS 648 227 5* 3.0 M	0600PM 0830PM	01931 EM 601 001 10	3.0 TR
05790 EDS 648 228 5* 3.0 M	0600PM 0830PM	01932 EM 645 001 18	1.8 TBA
05791 EDS 648 229 5* 3.0 M	0600PM 0830PM	01933 EM 748 001 9	0.9 TBA
05792 EDS 648 230 5* 3.0 M	0600PM 0830PM	01934 EM 749 001 10	1.0 TBA
05793 EDS 648 231 5* 3.0 M	0600PM 0830PM	01935 EM 749 001 9	0.9 TBA
05794 EDS 648 232 5* 3.0 M	0600PM 0830PM	01936 EM 786 001 10	1.0 TBA
05795 EDS 648 233 5* 3.0 M	0600PM 0830PM	01937 EM 789 001 9	0.9 TBA
05796 EDS 648 234 5* 3.0 M	0600PM 0830PM	01938 EM 789 001 10	1.0 TBA
05797 EDS 648 235 5* 3.0 M	0600PM 0830PM	01939 ENR 098 001 15	1.5 M
05798 EDS 648 236 5* 3.0 M	0600PM 0830PM	01940 ENR 101 001 1*	1.0 T
05799 EDS 648 237 5* 3.0 M	0600PM 0830PM	01941 ENR 101 003 1*	1.0 T
05800 EDS 648 238 5* 3.0 M	0600PM 0830PM	01942 ENR 101 004 2*	2.0 M
05801 EDS 648 239 5* 3.0 M	0600PM 0830PM	01943 ENR 101 004 2*	2.0 M
05802 EDS 648 240 5* 3.0 M	0600PM 0830PM	01944 ENR 101 004 2*	2.0 M
05803 EDS 648 241 5* 3.0 M	0600PM 0830PM	01945 ENR 101 004 2*	2.0 M
05804 EDS 648 242 5* 3.0 M	0600PM 0830PM	01946 ENR 101 004 2*	2.0 M
05805 EDS 648 243 5* 3.0 M	0600PM 0830PM	01947 ENR 101 004 2*	2.0 M
05806 EDS 648 244 5* 3.0 M	0600PM 0830PM	01948 ENR 101 004 2*	2.0 M
05807 EDS 648 245 5* 3.0 M	0600PM 0830PM	01949 ENR 101 010 1*	1.0 T
05808 EDS 648 246 5* 3.0 M	0600PM 0830PM	01950 ENR 101 043 2*	2.0 M
05809 EDS 648 247 5* 3.0 M	0600PM 0830PM	01951 ENR 101 044 1*	1.0 T
05810 EDS 648 248 5* 3.0 M	0600PM 0830PM	01952 ENR 101 044 1*	1.0 T
05811 EDS 648 249 5* 3.0 M	0600PM 0830PM	01953 ENR 101 048 1*	1.0 T
05812 EDS 648 250 5* 3.0 M	0600PM 0830PM	01954 ENR 101 049 1*	1.0 T
01833 EDU 645 002 25 S 0.0 MW	0100PM 0300PM	01955 ENR 101 049 1*	1.0 T
01834 EDU 645 001 21 S 0.0 MW	0100PM 0300PM		

How to Getaround

and to... Shopping Work Downtown Selected Movie Theatres

Even if you own a car, there's a big advantage when you get your **Getaround** bus pass from **LEXTRAN**!

1 way to save big!

buy a semester Getaround pass

For the amount of money you have to spend when your car is towed ONCE, you can get around Lexington ALL YEAR!

The **LEXTRAN** Getaround card for college students eliminates parking hassles and drops you off close to class. You'll save money on gas and wear on your car, and half-hour peak time service makes it reliable and convenient. Hey... you might even catch 10 more minutes of sleep on the way!

10 FREE "scratch" UK parking passes with purchase of two semester passes.

for UK commuters from **Nicholasville**

The **LEXTRAN** Getaround pass applies to Nicholasville-Express routes, too. Take **LEXTRAN** from Nicholasville to UK. After class, you'll have access to all the regular **LEXTRAN** routes, or catch a ride back to Nicholasville from any convenient Nicholasville-Express stop.

100 reasons why a student Getaround pass makes sense

No parking hassles. Sit back and relax on the bus.

- Shorter walk to class
- More miles to go, but... more "road time" on the way to class
- Convenient stops
- Deep lanes
- Get ENVIRONMENTAL (help keep the air clean)
- You won't lose that coveted parking space
- You won't be stranded when your car breaks down
- Make it to class in all types of weather (LEXTRAN runs even when it snows!)
- No more fighting for mall parking spaces
- NO MORE PARKING TICKETS...

4 Places to purchase your Getaround pass

- UK Bookstore
- UK parking structure #5-Transportation Office
- The **LEXTRAN** Transit Center downtown
- by Mail

new! Save your tread

Bike Racks on the Buses

new! **LEXTRAN** **Getaround** **Night Service**

All Routes Monday thru Saturday til 1am

For information and bus schedules call: **253-4636**

The **LEXTRAN** Student **Getaround** card UK, LCC & other colleges

Send to: Lextran Student Getaround Program 109 West London Avenue Lexington, KY 40508

For more information about the Getaround Program call **253-4636**

Order today! Limited number of Getaround cards available.

Enclosed is my payment of: \$ _____

Card to be issued to: Name _____

Send Getaround card to: Address _____ City _____ State _____ Zip _____

College _____

Just \$50 per semester or \$15 per month

Tear along dotted line and send along with your payment. Getaround card must be presented with a valid college ID when you ride the bus.

CAREERS AVAILABLE HERE

The Kentucky Kernel, your student newspaper is only as good as the students who get motivated and get involved. As the only daily student newspaper in the state, the Kernel provides a unique place for individuals to gain on the job experience in:

- photography, graphic design, writing, reporting, copy editing, advertising and new media

Show your face at the Kernel and get a head start on a career.

KENTUCKY KERNEL

STOP BY: Room# 026 GREHAN JOURNALISM BUILDING

CALL US: NEWSROOM: 257-1915 ADVERTISING: 257-2872

KENTUCKY KERNEL '98-'99 Staff Application

Positions: Check any interested in (rank 1, 2, 3 if needed)

<input type="checkbox"/> Staff Writer	<input type="checkbox"/> Columnist
<input type="checkbox"/> Photographer	<input type="checkbox"/> Production Assistant
<input type="checkbox"/> Copy Editor	<input type="checkbox"/> Page Designer
<input type="checkbox"/> Cartoonist	<input type="checkbox"/> Other:

Lexington/UK Information

Name _____

Address _____

Phone _____

E-mail _____

Permanent information

Address _____

Phone _____

E-mail _____

Academic information

Class _____

Major _____

GPA _____

Expected graduation _____

Publication experience (not required) _____

Please return your application in person to Mat Herson, editor in chief, or mail it to: Kentucky Kernel, 026 Journalism Building, Lexington, Ky. 40506-0042. Questions? Call the Kernel newsroom, (606) 257-1915.

new! **LEXTRAN** **Getaround** **Night Service**

All Routes Monday thru Saturday til 1am

For information and bus schedules call: **253-4636**

The **LEXTRAN** Student **Getaround** card UK, LCC & other colleges

Send to: Lextran Student Getaround Program 109 West London Avenue Lexington, KY 40508

For more information about the Getaround Program call **253-4636**

Order today! Limited number of Getaround cards available.

Enclosed is my payment of: \$ _____

Card to be issued to: Name _____

Send Getaround card to: Address _____ City _____ State _____ Zip _____

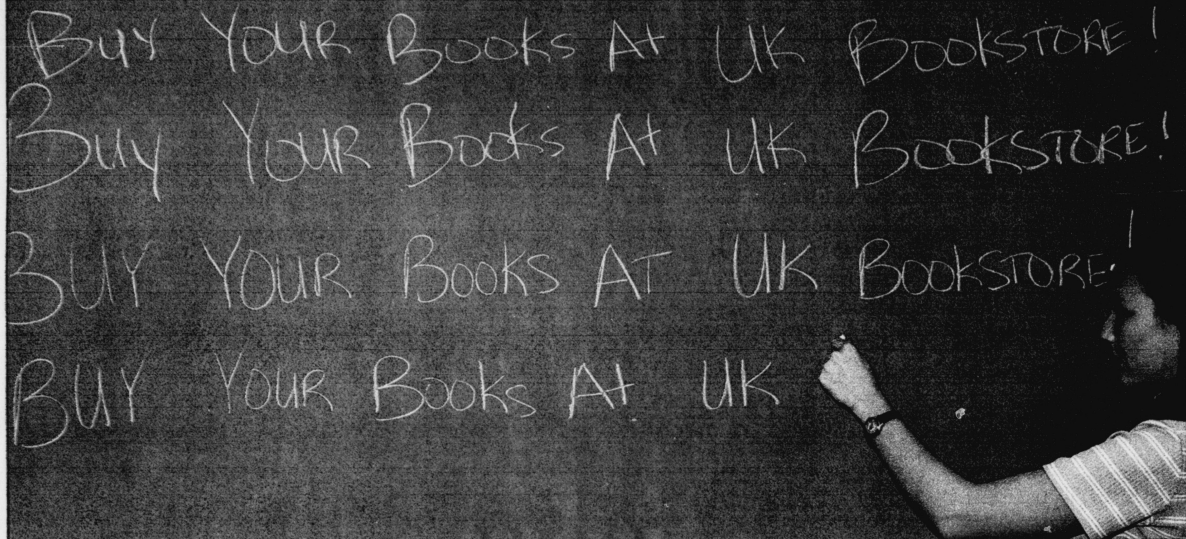
College _____

Just \$50 per semester or \$15 per month

Tear along dotted line and send along with your payment. Getaround card must be presented with a valid college ID when you ride the bus.

01889 ENG 101 050 1"	3.0	MWF	0200PM	0250PM	02199 FAM 700 002 16	3.0	TBA			02317 FAM 495 008 1"	C	1.0	TBA			02448 FOR 748 001 7	0.0	TBA		
01890 ENG 101 051 1"	3.0	MWF	0200PM	0250PM	02200 FAM 700 002 16	3.0	TR	1100AM	1215PM	02318 FAM 495 009 3"	C	1.0	TBA			02449 FOR 748 001 18	1.0	TBA		
01891 ENG 101 052 1"	3.0	MWF	0200PM	0250PM	02201 FAM 700 002 16	3.0	TBA			02319 FAM 495 010 11	3.0	R			02450 FOR 748 001 19	1.0	TBA			
01892 ENG 101 053 1"	3.0	MWF	0200PM	0250PM	02202 FAM 700 002 16	3.0	TBA			02320 FAM 495 011 14	3.0	T			02451 FOR 748 001 20	1.0	TBA			
01893 ENG 101 054 1"	3.0	MWF	0200PM	0250PM	02203 FAM 700 002 16	3.0	TBA			02321 FAM 495 012 17	3.0	TBA			02452 FOR 748 001 21	1.0	TBA			
01894 ENG 101 055 2"	3.0	MWF	0200PM	0250PM	02204 FAM 700 002 16	3.0	TBA			02322 FAM 495 013 18	3.0	T			02453 FOR 748 001 22	1.0	TBA			
01895 ENG 101 056 2"	3.0	MWF	0200PM	0250PM	02205 FAM 700 002 16	3.0	TBA			02323 FAM 495 014 19	3.0	T			02454 FOR 748 001 23	1.0	TBA			
02001 ENG 101 057 1"	3.0	TR	0930AM	1045AM	02206 ENG 799 001 69	0.0	TBA			02324 FAM 495 015 20	3.0	T			02455 FOR 748 001 24	1.0	TBA			
02002 ENG 101 058 2"	3.0	TR	0930AM	1045AM	02207 ENG 799 001 69	0.0	TBA			02325 FAM 495 016 21	3.0	T			02456 FOR 748 001 25	1.0	TBA			
02003 ENG 101 059 2"	3.0	TR	0930AM	1045AM	02208 ENG 799 001 69	0.0	TBA			02326 FAM 495 017 22	3.0	T			02457 FOR 748 001 26	1.0	TBA			
02004 ENG 101 060 1"	3.0	TR	0930AM	1045AM	02209 ENG 799 001 69	0.0	TBA			02327 FAM 495 018 23	3.0	T			02458 FOR 748 001 27	1.0	TBA			
02005 ENG 101 061 1"	3.0	TR	0930AM	1045AM	02210 ENG 799 001 69	0.0	TBA			02328 FAM 495 019 24	3.0	T			02459 FOR 748 001 28	1.0	TBA			
02006 ENG 101 062 1"	3.0	TR	0930AM	1045AM	02211 ENG 799 001 69	0.0	TBA			02329 FAM 495 020 25	3.0	T			02460 FOR 748 001 29	1.0	TBA			
02007 ENG 101 063 1"	3.0	TR	0930AM	1045AM	02212 ENG 799 001 69	0.0	TBA			02330 FAM 495 021 26	3.0	T			02461 FOR 748 001 30	1.0	TBA			
02008 ENG 101 064 1"	3.0	TR	0930AM	1045AM	02213 ENG 799 001 69	0.0	TBA			02331 FAM 495 022 27	3.0	T			02462 FOR 748 001 31	1.0	TBA			
02009 ENG 101 065 1"	3.0	TR	0930AM	1045AM	02214 ENG 799 001 69	0.0	TBA			02332 FAM 495 023 28	3.0	T			02463 FOR 748 001 32	1.0	TBA			
02010 ENG 101 066 1"	3.0	TR	0930AM	1045AM	02215 ENG 799 001 69	0.0	TBA			02333 FAM 495 024 29	3.0	T			02464 FOR 748 001 33	1.0	TBA			
02011 ENG 101 067 1"	3.0	TR	0930AM	1045AM	02216 ENG 799 001 69	0.0	TBA			02334 FAM 495 025 30	3.0	T			02465 FOR 748 001 34	1.0	TBA			
02012 ENG 101 068 1"	3.0	TR	0930AM	1045AM	02217 ENG 799 001 69	0.0	TBA			02335 FAM 495 026 31	3.0	T			02466 FOR 748 001 35	1.0	TBA			
02013 ENG 101 069 1"	3.0	TR	0930AM	1045AM	02218 ENG 799 001 69	0.0	TBA			02336 FAM 495 027 32	3.0	T			02467 FOR 748 001 36	1.0	TBA			
02014 ENG 101 070 1"	3.0	TR	0930AM	1045AM	02219 ENG 799 001 69	0.0	TBA			02337 FAM 495 028 33	3.0	T			02468 FOR 748 001 37	1.0	TBA			
02015 ENG 101 071 1"	3.0	TR	0930AM	1045AM	02220 ENG 799 001 69	0.0	TBA			02338 FAM 495 029 34	3.0	T			02469 FOR 748 001 38	1.0	TBA			
02016 ENG 101 072 1"	3.0	TR	0930AM	1045AM	02221 ENG 799 001 69	0.0	TBA			02339 FAM 495 030 35	3.0	T			02470 FOR 748 001 39	1.0	TBA			
02017 ENG 101 073 1"	3.0	TR	0930AM	1045AM	02222 ENG 799 001 69	0.0	TBA			02340 FAM 495 031 36	3.0	T			02471 FOR 748 001 40	1.0	TBA			
02018 ENG 101 074 1"	3.0	TR	0930AM	1045AM	02223 ENG 799 001 69	0.0	TBA			02341 FAM 495 032 37	3.0	T			02472 FOR 748 001 41	1.0	TBA			
02019 ENG 101 075 1"	3.0	TR	0930AM	1045AM	02224 ENG 799 001 69	0.0	TBA			02342 FAM 495 033 38	3.0	T			02473 FOR 748 001 42	1.0	TBA			
02020 ENG 101 076 1"	3.0	TR	0930AM	1045AM	02225 ENG 799 001 69	0.0	TBA			02343 FAM 495 034 39	3.0	T			02474 FOR 748 001 43	1.0	TBA			
02021 ENG 101 077 1"	3.0	TR	0930AM	1045AM	02226 ENG 799 001 69	0.0	TBA			02344 FAM 495 035 40	3.0	T			02475 FOR 748 001 44	1.0	TBA			
02022 ENG 101 078 1"	3.0	TR	0930AM	1045AM	02227 ENG 799 001 69	0.0	TBA			02345 FAM 495 036 41	3.0	T			02476 FOR 748 001 45	1.0	TBA			
02023 ENG 101 079 1"	3.0	TR	0930AM	1045AM	02228 ENG 799 001 69	0.0	TBA			02346 FAM 495 037 42	3.0	T			02477 FOR 748 001 46	1.0	TBA			
02024 ENG 101 080 1"	3.0	TR	0930AM	1045AM	02229 ENG 799 001 69	0.0	TBA			02347 FAM 495 038 43	3.0	T			02478 FOR 748 001 47	1.0	TBA			
02025 ENG 101 081 1"	3.0	TR	0930AM	1045AM	02230 ENG 799 001 69	0.0	TBA			02348 FAM 495 039 44	3.0	T			02479 FOR 748 001 48	1.0	TBA			
02026 ENG 101 082 1"	3.0	TR	0930AM	1045AM	02231 ENG 799 001 69	0.0	TBA			02349 FAM 495 040 45	3.0	T			02480 FOR 748 001 49	1.0	TBA			
02027 ENG 101 083 4"	3.0	TR	0330PM	0445PM	02210 ENT 300 001 2"	3.0	TR	1100AM	1150AM	02350 FAM 495 041 46	3.0	T			02481 FOR 748 001 50	1.0	TBA			
02028 ENG 101 084 1"	3.0	TR	0330PM	0445PM	02211 ENT 300 001 2"	3.0	TR	1100AM	1150AM	02351 FAM 495 042 47	3.0	T			02482 FOR 748 001 51	1.0	TBA			
02029 ENG 101 085 1"	3.0	TR	0330PM	0445PM	02212 ENT 300 001 2"	3.0	TR	1100AM	1150AM	02352 FAM 495 043 48	3.0	T			02483 FOR 748 001 52	1.0	TBA			
02030 ENG 101 086 1"	3.0	TR	0330PM	0445PM	02213 ENT 300 001 2"	3.0	TR	1100AM	1150AM	02353 FAM 495 044 49	3.0	T			02484 FOR 748 001 53	1.0	TBA			
02031 ENG 101 401 8	3.0	MW	0600PM	0715PM	02214 ENT 300 001 9	3.0	MW	1100AM	1150AM	02354 FAM 495 045 50	3.0	T			02485 FOR 748 001 54	1.0	TBA			
02032 ENG 101 402 3"	3.0	MW	0600PM	0715PM	02215 ENT 300 001 9	3.0	MW	1100AM	1150AM	02355 FAM 495 046 51	3.0	T			02486 FOR 748 001 55	1.0	TBA			
02033 ENG 102 001 6	3.0	MW	0600PM	0715PM	02216 ENT 300 001 9	3.0	MW	1100AM	1150AM	02356 FAM 495 047 52	3.0	T			02487 FOR 748 001 56	1.0	TBA			
02034 ENG 102 002 10	3.0	MW	0600PM	0715PM	02217 ENT 300 001 9	3.0	MW	1100AM	1150AM	02357 FAM 495 048 53	3.0	T			02488 FOR 748 001 57	1.0	TBA			
02035 ENG 102 003 10	3.0	MW	0600PM	0715PM	02218 ENT 300 001 9	3.0	MW	1100AM	1150AM	02358 FAM 495 049 54	3.0	T			02489 FOR 748 001 58	1.0	TBA			
02036 ENG 102 004 2"	3.0	MW	0600PM	0715PM	02219 ENT 300 001 9	3.0	MW	1100AM	1150AM	02359 FAM 495 050 55	3.0	T			02490 FOR 748 001 59	1.0	TBA			
02037 ENG 102 005 4"	3.0	MW	0600PM	0715PM	02220 ENT 300 001 9	3.0	MW	1100AM	1150AM	02360 FAM 495 051 56	3.0	T			02491 FOR 748 001 60	1.0	TBA			
02038 ENG 102 006 4"	3.0	MW	0600PM	0715PM	02221 ENT 300 001 9	3.0	MW	1100AM	1150AM	02361 FAM 495 052 57	3.0	T			02492 FOR 748 001 61	1.0	TBA			
02039 ENG 102 007 4"	3.0	MW	0600PM	0715PM	02222 ENT 300 001 9	3.0	MW	1100AM	1150AM	02362 FAM 495 053 58	3.0	T			02493 FOR 748 001 62	1.0	TBA			
02040 ENG 102 008 2"	3.0	MW	0600PM	0715PM	02223 ENT 300 001 9	3.0	MW	1100AM	1150AM	02363 FAM 495 054 59	3.0	T			02494 FOR 748 001 63	1.0	TBA			
02041 ENG 102 009 4"	3.0	MW	0600PM	0715PM	02224 ENT 300 001 9	3.0	MW	1100AM	1150AM	02364 FAM 495 055 60	3.0	T			02495 FOR 748 001 64	1.0	TBA			
02042 ENG 102 010 4"	3.0	MW	0600PM	0715PM	02225 ENT 300 001 9	3.0	MW	1100AM	1150AM	02365 FAM 495 056 61	3.0	T			02496 FOR 748 001 65	1.0	TBA			
02043 ENG 102 011 6	3.0	MW	0600PM	0715PM	02226 ENT 300 001 9	3.0	MW	1100AM	1150AM	02366 FAM 495 057 62	3.0	T			02497 FOR 748 001 66	1.0	TBA			
02044 ENG 102 012 15	3.0	MW	0600PM	0715PM	02227 ENT 300 001 9	3.0	MW	1100AM	1150AM	02367 FAM 495 058 63	3.0	T			02498 FOR 748 001 67	1.0	TBA			
02045 ENG 102 013 6	3.0	MW	0600PM	0715PM	02228 ENT 300 001 9	3.0	MW	1100AM	1150AM	02368 FAM 495 059 64	3.0	T			02499 FOR 748 001 68	1.0	TBA			
02046 ENG 102 014 11	3.0	MW	0600PM	0715PM	02229 ENT 300 001 9	3.0	MW	1100AM	1150AM	02369 FAM 495 060 65	3.0	T			02500 FOR 748 001 69	1.0	TBA			
02047 ENG 102 015 11	3.0	MW	0600PM	0715PM	02230 ENT 300 001 9	3.0	MW	1100AM	1150AM	02370 FAM 495 061 66	3.0	T			02501 FOR 748 001 70	1.0	TBA			
02048 ENG 102 016 11	3.0	MW	0600PM	0715PM	02231 ENT 300 001 9	3.0	MW	1100AM	1150AM	02371 FAM 495 062 67	3.0	T			02502 FOR 748 001 71	1.0	TBA			
02049 ENG 102 017 11	3.0																			

How many times do we have to tell you?!



UK BOOKSTORE

106 Student Center Annex

FALL RUSH HOURS

8/22 - 9-5p.m.
8/23 - 12-5p.m.
8/24 - 8/27-7:45-8p.m.
8/28 - 7:45-5p.m.
8/29 - 9-5p.m.
8/31 - regular hours
M-Th 7:45-7p.m.
F - 7:45-5p.m.
S - 10-4p.m.

257-6304

1-800-327-6141

www.ukbookstore.com

Medical Bookstore

763 Rose St. Annex 3
257-2947

Fall Rush Hours

8/24-28 - 8-5p.m.
8/31 - regular hours
8:30-5p.m.
Closed Saturdays

Call for your free catalog of UK merchandise.
Check out the Fall back to school specials.

Buy Used - Save 25% off New Books



Body Slam

WCW comes to Rupp

World Championship Wrestling's Thursday Night "Thunder" will come to Lexington's Rupp Arena for the first time on Thursday, Sept. 10.

The Sept. 10 Kernel Entertainment Guide (KEG) will feature a preview of the event, which will air on TBS. Tickets range from \$15 to \$25.

For more information call Ticketmaster or visit the WCW web site at www.wcw.com, or the Ticketmaster web site at www.ticketmaster.com.

Air Raid '98

Football schedule

Sept. 5 * at Louisville
SITE: Louisville, Ky.
TIME: 3 p.m.
TV: Fox Sports Net

Sept. 12 * E. Kentucky
SITE: Lexington
TIME: 1:30 p.m.
TV: UKTV delayed broadcast, 11:30 p.m.

Sept. 19 * Indiana
SITE: Lexington
TIME: 1:30 p.m.
TV: UKTV delayed broadcast, 11:30 p.m.

Sept. 26 * at Florida
SITE: Gainesville, Fla.
TIME: TBA
TV: UKTV delayed broadcast, 11:30 p.m.

Oct. 3 * at Arkansas
SITE: Little Rock, Ark.
TIME: 7 p.m.
TV: UKTV delayed broadcast, 11:30 p.m.

Oct. 10 * South Carolina
SITE: Lexington
TIME: 7 p.m.
TV: UKTV delayed broadcast, 11:30 p.m.

Oct. 17 * at LSU
SITE: Baton Rouge, La.
TIME: 9 p.m.
TV: ESPN2

Oct. 24 * Georgia
SITE: Lexington
TIME: 7 p.m.
TV: UKTV delayed broadcast, 11:30 p.m.

Oct. 31 * Open
Nov. 7 * Mississippi St.
SITE: Lexington
TIME: 1:30 p.m.
TV: UKTV delayed broadcast, 11:30 p.m.

Nov. 14 * Vanderbilt
SITE: Lexington
TIME: 1:30 p.m.
TV: UKTV delayed broadcast, 11:30 p.m.

Nov. 21 * at Tennessee
SITE: Knoxville
TIME: TBA
TV: UKTV delayed broadcast, 11:30 p.m.

SCHEDULE IS SUBJECT TO CHANGE

Sounds

It's a doggy dog world

1. **De Game Is To Be Sold, Not To Be Told**
- Snoop Dogg
2. **Armageddon**
- Soundtrack
3. **Hello Nasty**
- Beastie Boys
4. **Funkmaster Flex The Mix Tapes Vol. 3**
- Various Artists
5. **Stunt**
- Barenaked Ladies
6. **N Sync**
- N Sync
7. **Dr. Doollittle**
- Soundtrack
8. **City of Angels**
- Soundtrack
9. **Backstreet Boys**
- Backstreet Boys
10. **How Stella Got Her Groove Back**
- Soundtrack

SOURCE: BILLBOARD MAGAZINE

CAMPUS LIFE ADD/DROP SECTION

<http://www.kykernel.com>

KENTUCKY KERNEL | AUGUST 21, 1998 | B1



PHOTOS FURNISHED

Poetry or pornography?

Thomas Jay Ryan (above, left) and Parker Posey and James Urbanik (below, right) give excellent performances in 'Henry Fool'.



AT THE MOVIES

'Henry' fools and delights

By Dan O'Neill
DESIGN EDITOR

I wanted to be knee-deep in creaturely reality — the blood, guts, urine, sperm and spite of the common muck. And I wanted to amp it up to a comic book clarity."

- HAL HARTLEY
DIRECTOR
'HENRY FOOL'

With his latest film, *Henry Fool*, writer, director, producer and composer Hal Hartley achieves brilliance through bafflement.

It tells the story of Simon Grim (James Urbanik), an unassuming garbageman whose life has become a punching bag for the weak. He lives with his family — a neurotic, nymphomaniac sister (Parker Posey) and a clinically depressed mother (Maria Porter) — both of whom "used to think he was retarded."

Their lives get disrupted when a mysterious writer, Henry Fool (Thomas Jay Ryan), walks into their lives. Henry lives in their basement lit by the flames of a furnace (a reference to the Faustian Mephistopheles), all the while working on his sprawling opus called "Confessions."

His name is an obvious bit of irony as Henry seems anything but a fool. He comes off cultured and educated, but his supposed brilliance comes into question by the film's end.



He takes Simon under his wing and, shortly thereafter, Simon churns out a book-length epic poem in a near-mythical night's work. The poem works in strange ways. Some, including Henry, see it as a work of genius with great lyrical and ethical depth, while others call it scatological, pornographic muck. Still others see disparate affects: It causes a mute convenient store worker to sing, it brings his sister's period a week and a half early and another character commits suicide after reading it.

Soon the poem stirs national controversy and Simon is offered

an enticing publishing deal he was previously refused.

In all of its bizarre, allegorical storytelling, several tangible questions arise. Hartley asks about artistic and personal influence and then raises more common debates of art vs. morality and, even more interesting, how reaction creates value or non-value in art. Like other great thought-provoking films, *Henry Fool* doesn't attempt to answer any of its questions. Its work is done in raising them, not attempting to offer an explanation.

But for all the layers of complexity, Hartley instills a large dose of base, scatological humor himself. For every thought-provoking issue, there is a joke involving vomit, ugly sex or defecation.

Although most of these jokes are quite funny, they add to the film's sheer oddity and subsequent confusion. What does this all mean? How does it all work together?

Few people will come away with the answers, but most will be so charmed, so intrigued, they'll want to watch it again and again.

rating: A-

'Mr. Jealousy' gives male ego a swift kick in rear

Hey Jealousy: Eric Stoltz plays a lovable but paranoid boyfriend in a contemporary romance

By Luke Saladin
SCENE EDITOR

Male audiences will probably see *Mr. Jealousy* expecting to be amused by the rapture and ramblings of young lovers traveling across the thin tassels of '90s relationships.

This much is true. But a stark and sometimes painfully obvious male condition exceeds everything else in the film.

Mr. Jealousy chronicles the life of an up-and-coming New York teacher and would-be writer Lester Grimm (Eric Stoltz).

Through flashbacks, we learn Lester was traumatized at a young age by losing his first love to an older man. Confused by this event, his future partners are in turn plagued with probing questions,

compulsive behavior and, while he was in college, a late night surveillance program.

Lester and his "problem" are introduced by mutual friends to a beautiful museum curator Ramona Ray (Annabella Sciorra).

Now with his immersion into a relationship with another beautiful woman, Lester's semi-dormant "problem" returns. He is reminded several times by his own conscience that Ramona had a life before him, complete with boyfriends and an exorbitant social life.

Lester is uneasy when Ramona talks with or about old boyfriends. He wonders what deficiencies he has that would make her want to do so. And worst of all, he wonders if she liked these people more than him.



PHOTO FURNISHED

Close Encounters

Eric Stoltz stars as Lester, a New York teacher whose paranoia won't allow him to trust his girlfriend Ramona, played by Annabella Sciorra.

rating: A-

ON THE SIDELINES

Eyes on the prize

Mumme, Wildcats reloaded, ready to capture bowl bid

By Aaron Sanderford
SPORTSDAILY EDITOR

Few targets survived Hal Mumme's first Air Raid, but one miss still stings the pilot and crew.

A single missing victory soured a smashing debut of Highlights with Hal, crashed postseason plans, lengthened a legacy of losing and left the Wildcats simmering on a 5-6 record.

"Of course we were a little disappointed," Mumme said. "Our defense played well enough for us to win seven games last year."

With nine offensive starters returning and a year of execution in the fold, the Wildcat wait for redemption is over.

The Air Raid starts its second pass with bowl contention caught squarely in its cross-hairs, and focus is the buzzword.

"Man, I can't wait to get out there," wide receiver Craig Yeast said. "It's all I've been thinking about."

Yeast joins halfback Anthony White, fullback Derek Homer, tight end Jimmy Haley and quarterback Tim Couch in the second assault on UK and Southeastern Conference record books.

But the trailblazers of UK's potent attack are the five seniors in the trenches. Kris Comstock, Jonas Liening, Mike Webster, Jeremy Streck and Jason Watts form one of the most formidable offensive fronts in the SEC.

"It makes life a bit easier when the offensive line gives you a chance to get open," Yeast said.

On the other side of the ball, the Cats are more athletic but less experienced.

Only five starters return from a unit that allowed 362 points last season, but an influx of young talent should give immediate help.

A team goal of scoring 42 points per game as well as experience at linebacker, safety and defensive tackle take pressure off the young unit.

Dennis Johnson, the 1997 Gatorade Player of the Year in high school, gives the defense some drama with his athleticism and style, but the pulse of UK's defense is linebacker Jeff Snedegar. The status of Snedegar's rehabilitated shoulder could mean the difference between a mediocre run and a miracle campaign.

On special teams, speed should help lessen the need for punting away from potent SEC kick-returns. UK can pursue field position when necessary.

The core specialists return, with punter Jimmy Carter, and kickers Seth Hanson and Marc Samuel. UK's experienced offensive line will buy more time for punts and field goals, when used.

Mumme said: "You'll see the ball in the air, a defense that will play its heart out and don't get up to go to the bathroom on kicking downs."

Screen Time



'Henry Fool'
rating: A-

NOW SHOWING
The Kentucky Theatre
through Sept. 3

'Mr. Jealousy'
rating: A-

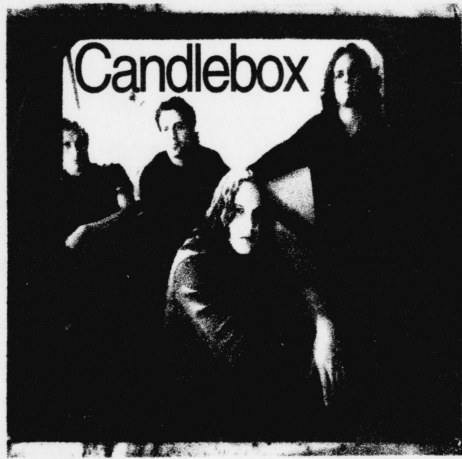
NOW SHOWING
The Kentucky Theatre
through Aug. 27

0600PM	02118 LIS	800	001	16	3.0	MW	0200PM	0315PM	03285 MA	123	402	1"	3.0	MW	0730PM	0845PM	02402 MFS	101	002	3"	1.0	T	0200PM	0200PM	12225 MI	825	001	20	1.0	TBA	0930AM	1045AM	
03120 LIS	800	001	16	3.0	MW	0600PM	0830PM	03288 MA	123	405	2"	3.0	TR	0730PM	0845PM	02403 MFS	101	001	20	1.0	T	0200PM	0200PM	03331 MGT	300	001	35	3.0	TR	0930AM	1045AM		
03121 LIS	801	001	20	3.0	TR	1100AM	1215PM	03292 MA	193	001	12	1.0	TBA	0730PM	0845PM	02404 MFS	101	001	20	1.0	T	0200PM	0200PM	03332 MGT	300	001	40	3.0	MWF	1200PM	0300PM	0300PM	0300PM
06895 LIS	801	202	24	3.0	M	0600PM	0830PM	03293 MA	193	002	14	1.0	TBA	0730PM	0845PM	02405 MFS	101	001	20	1.0	T	0200PM	0200PM	03333 MGT	300	001	20	3.0	MWF	0600PM	0850AM	0900AM	0900AM
03123 LIS	801	401	18	3.0	T	0600PM	0830PM	03294 MA	193	003	19	1.0	TBA	0730PM	0845PM	02406 MFS	101	001	20	1.0	T	0200PM	0200PM	03334 MGT	300	001	20	3.0	MWF	0600PM	0850AM	0900AM	0900AM
03142 LIS	802	001	1"	3.0	MW	1100AM	1215PM	03295 MA	193	004	21	1.0	TBA	0730PM	0845PM	02407 MFS	101	001	20	1.0	T	0200PM	0200PM	03335 MGT	300	001	20	3.0	MWF	0600PM	0850AM	0900AM	0900AM
03129 LIS	803	401	3"	3.0	R	0600PM	0830PM	03296 MA	193	005	18	1.0	TBA	0730PM	0845PM	02408 MFS	101	001	20	1.0	T	0200PM	0200PM	03336 MGT	300	001	20	3.0	MWF	0600PM	0850AM	0900AM	0900AM
06525 LIS	808	001	17	3.0	MW	0600PM	0830PM	03297 MA	193	006	21	1.0	TBA	0730PM	0845PM	02409 MFS	101	001	20	1.0	T	0200PM	0200PM	03337 MGT	300	001	20	3.0	MWF	0600PM	0850AM	0900AM	0900AM
03134 LIS	810	401	4"	3.0	M	0600PM	0830PM	03298 MA	193	007	14	1.0	TBA	0730PM	0845PM	02410 MFS	101	001	20	1.0	T	0200PM	0200PM	03338 MGT	300	001	20	3.0	MWF	0600PM	0850AM	0900AM	0900AM
03135 LIS	824	401	14	3.0	TR	1100AM	1215PM	03299 MA	193	008	15	1.0	TBA	0730PM	0845PM	02411 MFS	101	001	20	1.0	T	0200PM	0200PM	03339 MGT	300	001	20	3.0	MWF	0600PM	0850AM	0900AM	0900AM
03136 LIS	830	001	6	3.0	TR	0900AM	1045AM	03300 MA	193	009	14	1.0	TBA	0730PM	0845PM	02412 MFS	101	001	20	1.0	T	0200PM	0200PM	03340 MGT	300	001	20	3.0	MWF	0600PM	0850AM	0900AM	0900AM
03138 LIS	836	001	4"	3.0	R	0600PM	0830PM	03301 MA	193	010	23	1.0	TBA	0730PM	0845PM	02413 MFS	101	001	20	1.0	T	0200PM	0200PM	03341 MGT	300	001	20	3.0	MWF	0600PM	0850AM	0900AM	0900AM
03141 LIS	844	401	18	3.0	T	0600PM	0830PM	03302 MA	193	011	20	1.0	TBA	0730PM	0845PM	02414 MFS	101	001	20	1.0	T	0200PM	0200PM	03342 MGT	300	001	20	3.0	MWF	0600PM	0850AM	0900AM	0900AM
03143 LIS	845	001	11	3.0	T	0200PM	0430PM	03303 MA	193	012	23	1.0	TBA	0730PM	0845PM	02415 MFS	101	001	20	1.0	T	0200PM	0200PM	03343 MGT	300	001	20	3.0	MWF	0600PM	0850AM	0900AM	0900AM
03127 LIS	846	401	1"	3.0	T	0600PM	0830PM	03304 MA	193	013	25	1.0	TBA	0730PM	0845PM	02416 MFS	101	001	20	1.0	T	0200PM	0200PM	03344 MGT	300	001	20	3.0	MWF	0600PM	0850AM	0900AM	0900AM
06574 LIS	846	201	4"	3.0	R	0600PM	0830PM	03305 MA	193	014	21	1.0	TBA	0730PM	0845PM	02417 MFS	101	001	20	1.0	T	0200PM	0200PM	03345 MGT	300	001	20	3.0	MWF	0600PM	0850AM	0900AM	0900AM
06572 LIS	847	401	6	3.0	S	0100PM	0340PM	03306 MA	193	015	18	1.0	TBA	0730PM	0845PM	02418 MFS	101	001	20	1.0	T	0200PM	0200PM	03346 MGT	300	001	20	3.0	MWF	0600PM	0850AM	0900AM	0900AM
03144 LIS	868	001	6	3.0	R	0200PM	0430PM	03307 MA	193	016	19	1.0	TBA	0730PM	0845PM	02419 MFS	101	001	20	1.0	T	0200PM	0200PM	03347 MGT	300	001	20	3.0	MWF	0600PM	0850AM	0900AM	0900AM
03145 LIS	875	001	15	3.0	C	0300PM	0430PM	03308 MA	193	017	18	1.0	TBA	0730PM	0845PM	02420 MFS	101	001	20	1.0	T	0200PM	0200PM	03348 MGT	300	001	20	3.0	MWF	0600PM	0850AM	0900AM	0900AM
03146 LIS	875	201	14	3.0	TBA	0600PM	0830PM	03309 MA	193	018	28	1.0	TBA	0730PM	0845PM	02421 MFS	101	001	20	1.0	T	0200PM	0200PM	03349 MGT	300	001	20	3.0	MWF	0600PM	0850AM	0900AM	0900AM
03147 LIS	876	001	12	3.0	T	0600PM	0830PM	03310 MA	193	019	25	1.0	TBA	0730PM	0845PM	02422 MFS	101	001	20	1.0	T	0200PM	0200PM	03350 MGT	300	001	20	3.0	MWF	0600PM	0850AM	0900AM	0900AM
03122 LIS	876	201	8	1.0	TBA	0600PM	0830PM	03311 MA	193	020	21	1.0	TBA	0730PM	0845PM	02423 MFS	101	001	20	1.0	T	0200PM	0200PM	03351 MGT	300	001	20	3.0	MWF	0600PM	0850AM	0900AM	0900AM
03129 LIS	880	201	14	3.0	S	0100PM	0340PM	03312 MA	193	021	21	1.0	TBA	0730PM	0845PM	02424 MFS	101	001	20	1.0	T	0200PM	0200PM	03352 MGT	300	001	20	3.0	MWF	0600PM	0850AM	0900AM	0900AM
03148 LIS	885	001	15	3.0	TBA	0600PM	0830PM	03313 MA	193	022	18	1.0	TBA	0730PM	0845PM	02425 MFS	101	001	20	1.0	T	0200PM	0200PM	03353 MGT	300	001	20	3.0	MWF	0600PM	0850AM	0900AM	0900AM
03150 LIS	895	201	12	3.0	C	0300PM	0430PM	03314 MA	193	023	23	1.0	TBA	0730PM	0845PM	02426 MFS	101	001	20	1.0	T	0200PM	0200PM	03354 MGT	300	001	20	3.0	MWF	0600PM	0850AM	0900AM	0900AM
03151 LIS	768	001	6"	3.0	TBA	0600PM	0830PM	03315 MA	193	024	16	1.0	TBA	0730PM	0845PM	02427 MFS	101	001	20	1.0	T	0200PM	0200PM	03355 MGT	300	001	20	3.0	MWF	0600PM	0850AM	0900AM	0900AM
03152 LIS	1068	003	1"	3.0	MWF	1100AM	1215PM	03316 MA	194	002	17	1.0	TBA	0730PM	0845PM	02428 MFS	101	001	20	1.0	T	0200PM	0200PM	03356 MGT	300	001	20	3.0	MWF	0600PM	0850AM	0900AM	0900AM
03153 LIS	109	402	4"	3.0	TR	0730PM	0845PM	03317 MA	194	003	20	1.0	TBA	0730PM	0845PM	02429 MFS	101	001	20	1.0	T	0200PM	0200PM	03357 MGT	300	001	20	3.0	MWF	0600PM	0850AM	0900AM	0900AM
03154 LIS	109	402	4"	3.0	TR	0730PM	0845PM	03318 MA	194	004	18	1.0	TBA	0730PM	0845PM	02430 MFS	101	001	20	1.0	T	0200PM	0200PM	03358 MGT	300	001	20	3.0	MWF	0600PM	0850AM	0900AM	0900AM
03155 LIS	109	402	4"	3.0	TR	0730PM	0845PM	03319 MA	194	005	15	1.0	TBA	0730PM	0845PM	02431 MFS	101	001	20	1.0	T	0200PM	0200PM	03359 MGT	300	001	20	3.0	MWF	0600PM	0850AM	0900AM	0900AM
03156 LIS	109	402	4"	3.0	TR	0730PM	0845PM	03320 MA	194	006	18	1.0	TBA	0730PM	0845PM	02432 MFS	101	001	20	1.0	T	0200PM	0200PM	03360 MGT	300	001	20	3.0	MWF	0600PM	0850AM	0900AM	0900AM
03157 LIS	109	402	4"	3.0	TR	0730PM	0845PM	03321 MA	194	007	16	1.0	TBA	0730PM	0845PM	02433 MFS	101	001	20	1.0	T	0200PM	0200PM	03361 MGT	300	001	20	3.0	MWF	0600PM	0850AM	0900AM	0900AM
03158 LIS	109	402	4"	3.0	TR	0730PM	0845PM	03322 MA	194	008	15	1.0	TBA	0730PM	0845PM	02434 MFS	101	001	20	1.0	T	0200PM	0200PM	03362 MGT	300	001	20	3.0	MWF	0600PM	0850AM	0900AM	0900AM
03159 LIS	109	402	4"	3.0	TR	0730PM	0845PM	03323 MA	194	009	17	1.0	TBA	0730PM	0845PM	02435 MFS	101	001	20	1.0	T	0200PM	0200PM	03363 MGT	300	001	20	3.0	MWF	0600PM	0850AM	0900AM	0900AM
03160 LIS	110	001	1"	4.0	MWF	0800AM	0915AM	03324 MA	194	010	17	1.0	TBA	0730PM	0845PM	02436 MFS	101	001	20	1.0	T	0200PM	0200PM	03364 MGT	300	001	20	3.0	MWF	0600PM	0850AM	0900AM	0900AM
03201 MA	110	002	3"	4.0	MWF	0900AM	1015AM	03325 MA	194	011	17	1.0	TBA	0730PM	0845PM	02437 MFS	101	001	20	1.0	T	0200PM	0200PM	03365 MGT	300	001	20	3.0	MWF	0600PM	0850AM	0900AM	0900AM
03202 MA	110	003	2"	4.0	MWF	0900AM	1015AM	03326 MA	194	012	17	1.0	TBA	0730PM	0845PM	02438 MFS	101	001	20	1.0	T	0200PM	0200PM	03366 MGT	300	001	20	3.0	MWF	0600PM	0850AM	0900AM	0900AM

Z-FEST '98

AT THE RED MILE

LEXINGTON, KY SUN. AUG. 30



WITH SPECIAL GUESTS:

BETTER THAN EZRA • ATHENAEUM • FAR TOO JONES • EVERYTHING
TRIPPING DAISY • STRETCH PRINCESS • SUPAFUZZ • ARTGECKO • SWIFTY

Listen to Z-103 for more band announcements & Z-FEST updates
or hit the WEBSITE: www.z103.com

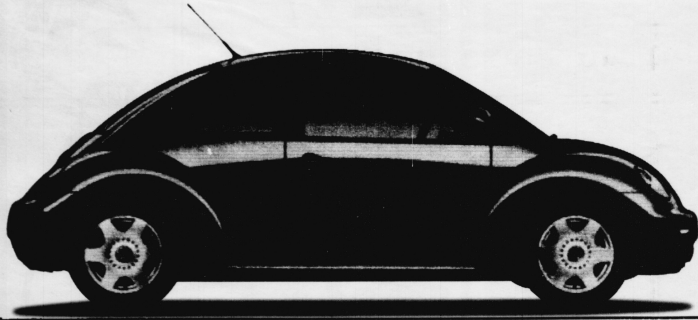
RED MILE GATES OPEN AT 11:00 A.M. TICKETS: \$20 - IN ADVANCE \$30 - DAY OF THE SHOW

Tickets at all TICKET MASTER OUTLETS • Or charge by phone: 281-6644

The Concert Event of 1998

2908

AUG 21 1998



\$ 00,000.00

This is not your FATHER'S fixer-upper
with fake wood paneling and an 8-track.

FOR **WIN A NEW BEETLE®**

Come into participating Bank One banking centers right now and register to win a New Beetle®, the coolest car of the year. We'll even throw in a free 15-minute phone card when you open a Basic One® Checking account. Official rules available at participating Bank One banking centers. Phone cards available while supplies last. Trademarks used with permission of Volkswagen of America, Inc.



B4 | FRIDAY, AUGUST 21, 1998 | KENTUCKY KERNEL/AD/DP/DP



FREEDOM
to EAT

Basic One Checking for Students

1-888-714-4362

featuring **THE ONE Card:**

Get cash. Buy food. **CHEW WITH YOUR MOUTH CLOSED.**

online access @

www.bankone.com

BANK ONE

AUG 21 1998

A 5

B5 | FRIDAY, AUGUST 21, 1998 | KENTUCKY KERNEL/AD/DP/DP

03689 MUC 175 002 20	1.0	TR	0300PM	0405PM	03795 MUP 305 001 8	C	1.0	TBA	1230PM	0150PM	03907 MUP 620 001 10	C	1.0	TBA	1230PM	0150PM	03978 MUC 350 001 15	1.0	WW	1200PM	1200PM
03670 MUC 176 001 9	1.0	T	1230PM	0150PM	03796 MUP 308 001 9	C	1.0	TBA	1230PM	0150PM	03908 MUP 623 001 10	C	1.0	TBA	1230PM	0150PM	03979 MUC 358 001 10	2.0	MW	1100AM	1100AM
03672 MUC 177 001 6	1.0	TBA	0640PM	0800PM	03797 MUP 307 001 7	C	1.0	TBA	1230PM	0150PM	03910 MUP 624 001 10	C	1.0	TBA	1230PM	0150PM	03980 MUC 363 001 4	3.0	MWF	0900AM	0900AM
03674 MUC 180 001 15	1.0	MWF	0300PM	0400PM	03798 MUP 306 001 7	C	1.0	TBA	1230PM	0150PM	03911 MUP 625 001 10	C	1.0	TBA	1230PM	0150PM	03981 MUC 372 001 4	2.0	TR	0300PM	0300PM
03675 MUC 180 001 15	1.0	MWF	0300PM	0400PM	03799 MUP 309 001 8	C	1.0	TBA	1230PM	0150PM	03912 MUP 626 001 10	C	1.0	TBA	1230PM	0150PM	03982 MUC 375 002 3	2.0	TR	0300PM	0300PM
03676 MUC 181 001 28	1.0	TR	0300PM	0400PM	03800 MUP 310 001 9	C	1.0	TBA	1230PM	0150PM	03913 MUP 701 001 10	C	1.0	TBA	1230PM	0150PM	03983 MUC 386 001 8	3.0	TR	0300PM	0445PM
03677 MUC 192 001 41	1.0	F	0200PM	0300PM	03801 MUP 311 001 9	C	1.0	TBA	1230PM	0150PM	03914 MUP 702 002 8	C	1.0	TBA	1230PM	0150PM	03984 MUC 470 001 14	1.0	W	0200PM	0200PM
03678 MUC 192 002 19	1.0	TR	0300PM	0400PM	03802 MUP 312 002 10	C	1.0	TBA	1230PM	0150PM	03915 MUP 703 001 10	C	1.0	TBA	1230PM	0150PM	03985 MUC 470 001 14	1.0	W	0200PM	0200PM
03679 MUC 192 003 46	1.0	MW	0300PM	0400PM	03803 MUP 313 002 10	C	1.0	TBA	1230PM	0150PM	03916 MUP 704 001 10	C	1.0	TBA	1230PM	0150PM	03986 MUC 470 001 14	1.0	W	0200PM	0200PM
03680 MUC 196 001 14	1.0	MW	0700PM	0800PM	03804 MUP 314 001 9	C	1.0	TBA	1230PM	0150PM	03917 MUP 702 003 10	C	1.0	TBA	1230PM	0150PM	03987 MUC 471 001 15	1.0	TBA	0830AM	0900AM
03681 MUC 196 001 14	1.0	MW	0700PM	0800PM	03805 MUP 315 001 9	C	1.0	TBA	1230PM	0150PM	03918 MUP 702 004 9	C	1.0	TBA	1230PM	0150PM	03988 MUC 521 001 13	3.0	MWF	0300PM	0300PM
03682 MUC 196 002 12	1.0	TR	0300PM	0400PM	03806 MUP 316 001 8	C	1.0	TBA	1230PM	0150PM	03919 MUP 703 001 10	C	1.0	TBA	1230PM	0150PM	03989 MUC 521 001 13	3.0	MWF	0300PM	0300PM
03683 MUC 205 001 13	1.0	TR	0300PM	0400PM	03807 MUP 317 002 10	C	1.0	TBA	1230PM	0150PM	03920 MUP 704 001 10	C	1.0	TBA	1230PM	0150PM	03990 MUC 574 001 28	2.0	TBA	0400PM	0500PM
03684 MUC 274 001 30	2.0	T	0300PM	0400PM	03811 MUP 317 002 8	C	1.0	TBA	1230PM	0150PM	03921 MUP 705 001 10	C	1.0	TBA	1230PM	0150PM	03991 MUC 574 001 28	2.0	TBA	0400PM	0500PM
03685 MUC 274 001 30	2.0	T	0300PM	0400PM	03812 MUP 318 001 4	C	1.0	TBA	1230PM	0150PM	03922 MUP 706 001 10	C	1.0	TBA	1230PM	0150PM	03992 MUC 574 001 28	2.0	TBA	0400PM	0500PM
03686 MUC 270 002 9	1.0	TBA	0800AM	0915AM	03813 MUP 318 002 10	C	1.0	TBA	1230PM	0150PM	03923 MUP 707 001 10	C	1.0	TBA	1230PM	0150PM	03993 MUC 574 001 28	2.0	TBA	0400PM	0500PM
03687 MUC 270 002 9	1.0	TBA	0800AM	0915AM	03814 MUP 320 001 10	C	1.0	TBA	1230PM	0150PM	03924 MUP 709 001 10	C	1.0	TBA	1230PM	0150PM	03994 MUC 574 001 28	2.0	TBA	0400PM	0500PM
03688 MUC 270 002 9	1.0	TBA	0800AM	0915AM	03815 MUP 320 001 10	C	1.0	TBA	1230PM	0150PM	03925 MUP 710 001 10	C	1.0	TBA	1230PM	0150PM	03995 MUC 574 001 28	2.0	TBA	0400PM	0500PM
03689 MUC 270 002 9	1.0	TBA	0800AM	0915AM	03816 MUP 321 001 10	C	1.0	TBA	1230PM	0150PM	03926 MUP 711 001 10	C	1.0	TBA	1230PM	0150PM	03996 MUC 574 001 28	2.0	TBA	0400PM	0500PM
03690 MUC 270 002 9	1.0	TBA	0800AM	0915AM	03817 MUP 323 001 8	C	1.0	TBA	1230PM	0150PM	03927 MUP 712 001 10	C	1.0	TBA	1230PM	0150PM	03997 MUC 574 001 28	2.0	TBA	0400PM	0500PM
03691 MUC 270 002 9	1.0	TBA	0800AM	0915AM	03818 MUP 401 001 9	C	1.0	TBA	1230PM	0150PM	03928 MUP 713 001 10	C	1.0	TBA	1230PM	0150PM	03998 MUC 574 001 28	2.0	TBA	0400PM	0500PM
03692 MUC 270 002 9	1.0	TBA	0800AM	0915AM	03819 MUP 401 002 10	C	1.0	TBA	1230PM	0150PM	03929 MUP 714 001 10	C	1.0	TBA	1230PM	0150PM	03999 MUC 574 001 28	2.0	TBA	0400PM	0500PM
03693 MUC 270 002 9	1.0	TBA	0800AM	0915AM	03820 MUP 401 003 3	C	1.0	TBA	1230PM	0150PM	03930 MUP 716 001 10	C	1.0	TBA	1230PM	0150PM	04000 MUC 574 001 28	2.0	TBA	0400PM	0500PM
03694 MUC 270 002 9	1.0	TBA	0800AM	0915AM	03821 MUP 401 004 4	C	1.0	TBA	1230PM	0150PM	03931 MUP 717 001 10	C	1.0	TBA	1230PM	0150PM	04001 MUC 574 001 28	2.0	TBA	0400PM	0500PM
03695 MUC 270 002 9	1.0	TBA	0800AM	0915AM	03822 MUP 402 001 9	C	1.0	TBA	1230PM	0150PM	03932 MUP 718 001 10	C	1.0	TBA	1230PM	0150PM	04002 MUC 574 001 28	2.0	TBA	0400PM	0500PM
03696 MUC 270 002 9	1.0	TBA	0800AM	0915AM	03823 MUP 402 004 9	C	1.0	TBA	1230PM	0150PM	03933 MUP 720 001 10	C	1.0	TBA	1230PM	0150PM	04003 MUC 574 001 28	2.0	TBA	0400PM	0500PM
03697 MUC 270 002 9	1.0	TBA	0800AM	0915AM	03824 MUP 402 005 10	C	1.0	TBA	1230PM	0150PM	03934 MUP 720 002 10	C	1.0	TBA	1230PM	0150PM	04004 MUC 574 001 28	2.0	TBA	0400PM	0500PM
03698 MUC 270 002 9	1.0	TBA	0800AM	0915AM	03825 MUP 402 006 10	C	1.0	TBA	1230PM	0150PM	03935 MUP 720 003 10	C	1.0	TBA	1230PM	0150PM	04005 MUC 574 001 28	2.0	TBA	0400PM	0500PM
03699 MUC 270 002 9	1.0	TBA	0800AM	0915AM	03826 MUP 402 007 10	C	1.0	TBA	1230PM	0150PM	03936 MUP 720 004 10	C	1.0	TBA	1230PM	0150PM	04006 MUC 574 001 28	2.0	TBA	0400PM	0500PM
03700 MUC 270 002 9	1.0	TBA	0800AM	0915AM	03827 MUP 402 008 10	C	1.0	TBA	1230PM	0150PM	03937 MUP 720 005 10	C	1.0	TBA	1230PM	0150PM	04007 MUC 574 001 28	2.0	TBA	0400PM	0500PM
03701 MUC 270 002 9	1.0	TBA	0800AM	0915AM	03828 MUP 402 009 10	C	1.0	TBA	1230PM	0150PM	03938 MUP 720 006 10	C	1.0	TBA	1230PM	0150PM	04008 MUC 574 001 28	2.0	TBA	0400PM	0500PM
03702 MUC 270 002 9	1.0	TBA	0800AM	0915AM	03829 MUP 403 001 10	C	1.0	TBA	1230PM	0150PM	03939 MUP 720 007 10	C	1.0	TBA	1230PM	0150PM	04009 MUC 574 001 28	2.0	TBA	0400PM	0500PM
03703 MUC 270 002 9	1.0	TBA	0800AM	0915AM	03830 MUP 404 001 7	C	1.0	TBA	1230PM	0150PM	03940 MUP 720 008 10	C	1.0	TBA	1230PM	0150PM	04010 MUC 574 001 28	2.0	TBA	0400PM	0500PM
03704 MUC 270 002 9	1.0	TBA	0800AM	0915AM	03831 MUP 405 001 9	C	1.0	TBA	1230PM	0150PM	03941 MUP 720 009 10	C	1.0	TBA	1230PM	0150PM	04011 MUC 574 001 28	2.0	TBA	0400PM	0500PM
03705 MUC 270 002 9	1.0	TBA	0800AM	0915AM	03832 MUP 406 001 9	C	1.0	TBA	1230PM	0150PM	03942 MUP 720 010 10	C	1.0	TBA	1230PM	0150PM	04012 MUC 574 001 28	2.0	TBA	0400PM	0500PM
03706 MUC 270 002 9	1.0	TBA	0800AM	0915AM	03833 MUP 407 001 10	C	1.0	TBA	1230PM	0150PM	03943 MUP 720 011 10	C	1.0	TBA	1230PM	0150PM	04013 MUC 574 001 28	2.0	TBA	0400PM	0500PM
03707 MUC 270 002 9	1.0	TBA	0800AM	0915AM	03834 MUP 408 001 10	C	1.0	TBA	1230PM	0150PM	03944 MUP 720 012 10	C	1.0	TBA	1230PM	0150PM	04014 MUC 574 001 28	2.0	TBA	0400PM	0500PM
03708 MUC 270 002 9	1.0	TBA	0800AM	0915AM	03835 MUP 409 001 10	C	1.0	TBA	1230PM	0150PM	03945 MUP 720 013 10	C	1.0	TBA	1230PM	0150PM	04015 MUC 574 001 28	2.0	TBA	0400PM	0500PM
03709 MUC 270 002 9	1.0	TBA	0800AM	0915AM	03836 MUP 410 001 8	C	1.0	TBA	1230PM	0150PM	03946 MUP 720 014 10	C	1.0	TBA	1230PM	0150PM	04016 MUC 574 001 28	2.0	TBA	0400PM	0500PM
03710 MUC 270 002 9	1.0	TBA	0800AM	0915AM	03837 MUP 411 001 10	C	1.0	TBA	1230PM	0150PM	03947 MUP 720 015 10	C	1.0	TBA	1230PM	0150PM	04017 MUC 574 001 28	2.0	TBA	0400PM	0500PM
03711 MUC 270 002 9	1.0	TBA	0800AM	0915AM	03838 MUP 412 001 10	C	1.0	TBA	1230PM	0150PM	03948 MUP 720 016 10	C	1.0	TBA	1230PM	0150PM	04018 MUC 574 001 28	2.0	TBA	0400PM	0500PM
03712 MUC 270 002 9	1.0	TBA	0800AM	0915AM	03839 MUP 413 001 8	C	1.0	TBA	1230PM	0150PM	03949 MUP 720 017 10	C	1.0	TBA	1230PM	0150PM	04019 MUC 574 001 28	2.0	TBA	0400PM	0500PM
03713 MUC 270 002 9	1.0	TBA	0800AM	0915AM	03840 MUP 414 001 8	C	1.0	TBA	1230PM	0150PM	03950 MUP 720 018 10	C	1.0	TBA	1230PM	0150PM	04020 MUC 574 001 28	2.0	TBA	0400PM	0500PM
03714 MUC 270 002 9	1.0	TBA	0800AM	0915AM	03841 MUP 415 001 10	C	1.0	TBA	1230PM	0150PM	03951 MUP 720 019 10	C	1.0	TBA	1230PM	0150PM	04021 MUC 574 001 28	2.0	TBA	0400PM	0500PM
03715 MUC 270 002 9	1.0	TBA	0800AM	0915AM	03842 MUP 416 001 9	C	1.0	TBA	1230PM	0150PM	03952 MUP 720 020 10	C	1.0	TBA	1230PM	0150PM	04022 MUC 574 001 28	2.0	TBA	0400PM	0500PM
03716 MUC 270 002 9	1.0	TBA	0800AM	0915AM	03843 MUP 417 001 8	C	1.0	TBA	1230PM	0150PM	03953 MUP 720 021 10	C	1.0	TBA	1230PM	0150PM	04023 MUC 574 001 28	2.0	TBA	0400PM	0500PM
03717 MUC 270 002 9	1.0	TBA	0800AM	0915AM	0384																

04054 NFS 781 002 4*	1.0	TBA	04139 NUR 815 002 11	5.0	TBA	04242 NUR 769 007 6	0.0	TBA	11050 ORT 862 001 20	3.0	TBA
04055 NFS 784 001 6	1.0	TBA	04140 NUR 815 003 11	5.0	TBA	04243 NUR 769 008 2*	0.0	TBA	11051 CRT 864 001 20	1.0	TBA
04056 NFS 784 002 3*	1.0	TBA	04141 NUR 815 004 12	5.0	TBA	04244 NUR 769 009 2*	0.0	TBA	11052 CRT 788 001 18	1.0	TBA
04057 NRC 301 001 2*	3.0	TR	04142 NUR 815 005 11	5.0	TBA	04245 NUR 769 010 6	0.0	TBA	11053 CRT 770 001 30	1.0	TBA
04058 NRC 301 002 3*	3.0	TR	04143 NUR 815 006 12	5.0	TBA	04246 NUR 769 011 6	0.0	TBA	11054 CRT 770 002 27	1.0	TBA
04059 NRC 399 001 17	C	1.0	04144 NUR 815 007 7	5.0	TBA	04247 NUR 769 012 6	0.0	TBA	11055 CRT 770 003 27	1.0	TBA
04060 NRC 4710 001 30	C	1.0	04145 NUR 815 008 9	5.0	TBA	04248 NUR 769 013 6	0.0	TBA	11056 CRT 770 004 27	1.0	TBA
04061 NRC 555 001 4	3.0	MMW	04146 NUR 815 009 9	5.0	TBA	04249 NUR 769 014 6	0.0	TBA	11057 CRT 770 005 10	3.0	TR
04062 NS 880 001 8	4.0	T	04147 NUR 815 010 6	5.0	TBA	04250 NUR 769 015 6	0.0	TBA	11060 OSG 861 001 17	1.0	TBA
			04148 NUR 820 001 6	2.0	TBA	04251 NUR 769 016 6	1.0	TBA	04340 PA 821 401 6	3.0	R
			04149 NUR 820 002 6	2.0	TBA	04252 NUR 769 017 6	1.0	TBA	04341 PA 821 402 6	3.0	R
			04150 NUR 820 003 6	2.0	TBA	04253 NUR 769 018 6	1.0	TBA	04342 PA 821 403 6	3.0	R
			04151 NUR 820 004 6	2.0	TBA	04254 NUR 769 019 6	1.0	TBA	04343 PA 821 404 6	3.0	R
			04152 NUR 820 005 6	2.0	TBA	04255 NUR 769 020 6	1.0	TBA	04344 PA 821 405 6	3.0	R
			04153 NUR 820 006 6	2.0	TBA	04256 NUR 769 021 6	1.0	TBA	04345 PA 821 406 6	3.0	R
			04154 NUR 820 007 6	2.0	TBA	04257 NUR 769 022 6	1.0	TBA	04346 PA 821 407 6	3.0	R
			04155 NUR 820 008 6	2.0	TBA	04258 NUR 769 023 6	1.0	TBA	04347 PA 821 408 6	3.0	R
			04156 NUR 820 009 6	2.0	TBA	04259 NUR 769 024 6	1.0	TBA	04348 PA 821 409 6	3.0	R
			04157 NUR 820 010 6	2.0	TBA	04260 NUR 769 025 6	1.0	TBA	04349 PA 821 410 6	3.0	R
			04158 NUR 820 011 6	2.0	TBA	04261 NUR 769 026 6	1.0	TBA	04350 PA 821 411 6	3.0	R
			04159 NUR 820 012 6	2.0	TBA	04262 NUR 769 027 6	1.0	TBA	04351 PA 821 412 6	3.0	R
			04160 NUR 820 013 6	2.0	TBA	04263 NUR 769 028 6	1.0	TBA	04352 PA 821 413 6	3.0	R
			04161 NUR 820 014 6	2.0	TBA	04264 NUR 769 029 6	1.0	TBA	04353 PA 821 414 6	3.0	R
			04162 NUR 820 015 6	2.0	TBA	04265 NUR 769 030 6	1.0	TBA	04354 PA 821 415 6	3.0	R
			04163 NUR 820 016 6	2.0	TBA	04266 NUR 769 031 6	1.0	TBA	04355 PA 821 416 6	3.0	R
			04164 NUR 820 017 6	2.0	TBA	04267 NUR 769 032 6	1.0	TBA	04356 PA 821 417 6	3.0	R
			04165 NUR 820 018 6	2.0	TBA	04268 NUR 769 033 6	1.0	TBA	04357 PA 821 418 6	3.0	R
			04166 NUR 820 019 6	2.0	TBA	04269 NUR 769 034 6	1.0	TBA	04358 PA 821 419 6	3.0	R
			04167 NUR 820 020 6	2.0	TBA	04270 NUR 769 035 6	1.0	TBA	04359 PA 821 420 6	3.0	R
			04168 NUR 820 021 6	2.0	TBA	04271 NUR 769 036 6	1.0	TBA	04360 PA 821 421 6	3.0	R
			04169 NUR 820 022 6	2.0	TBA	04272 NUR 769 037 6	1.0	TBA	04361 PA 821 422 6	3.0	R
			04170 NUR 820 023 6	2.0	TBA	04273 NUR 769 038 6	1.0	TBA	04362 PA 821 423 6	3.0	R
			04171 NUR 820 024 6	2.0	TBA	04274 NUR 769 039 6	1.0	TBA	04363 PA 821 424 6	3.0	R
			04172 NUR 820 025 6	2.0	TBA	04275 NUR 769 040 6	1.0	TBA	04364 PA 821 425 6	3.0	R
			04173 NUR 820 026 6	2.0	TBA	04276 NUR 769 041 6	1.0	TBA	04365 PA 821 426 6	3.0	R
			04174 NUR 820 027 6	2.0	TBA	04277 NUR 769 042 6	1.0	TBA	04366 PA 821 427 6	3.0	R
			04175 NUR 820 028 6	2.0	TBA	04278 NUR 769 043 6	1.0	TBA	04367 PA 821 428 6	3.0	R
			04176 NUR 820 029 6	2.0	TBA	04279 NUR 769 044 6	1.0	TBA	04368 PA 821 429 6	3.0	R
			04177 NUR 820 030 6	2.0	TBA	04280 NUR 769 045 6	1.0	TBA	04369 PA 821 430 6	3.0	R
			04178 NUR 820 031 6	2.0	TBA	04281 NUR 769 046 6	1.0	TBA	04370 PA 821 431 6	3.0	R
			04179 NUR 820 032 6	2.0	TBA	04282 NUR 769 047 6	1.0	TBA	04371 PA 821 432 6	3.0	R
			04180 NUR 820 033 6	2.0	TBA	04283 NUR 769 048 6	1.0	TBA	04372 PA 821 433 6	3.0	R
			04181 NUR 820 034 6	2.0	TBA	04284 NUR 769 049 6	1.0	TBA	04373 PA 821 434 6	3.0	R
			04182 NUR 820 035 6	2.0	TBA	04285 NUR 769 050 6	1.0	TBA	04374 PA 821 435 6	3.0	R
			04183 NUR 820 036 6	2.0	TBA	04286 NUR 769 051 6	1.0	TBA	04375 PA 821 436 6	3.0	R
			04184 NUR 820 037 6	2.0	TBA	04287 NUR 769 052 6	1.0	TBA	04376 PA 821 437 6	3.0	R
			04185 NUR 820 038 6	2.0	TBA	04288 NUR 769 053 6	1.0	TBA	04377 PA 821 438 6	3.0	R
			04186 NUR 820 039 6	2.0	TBA	04289 NUR 769 054 6	1.0	TBA	04378 PA 821 439 6	3.0	R
			04187 NUR 820 040 6	2.0	TBA	04290 NUR 769 055 6	1.0	TBA	04379 PA 821 440 6	3.0	R
			04188 NUR 820 041 6	2.0	TBA	04291 NUR 769 056 6	1.0	TBA	04380 PA 821 441 6	3.0	R
			04189 NUR 820 042 6	2.0	TBA	04292 NUR 769 057 6	1.0	TBA	04381 PA 821 442 6	3.0	R
			04190 NUR 820 043 6	2.0	TBA	04293 NUR 769 058 6	1.0	TBA	04382 PA 821 443 6	3.0	R
			04191 NUR 820 044 6	2.0	TBA	04294 NUR 769 059 6	1.0	TBA	04383 PA 821 444 6	3.0	R
			04192 NUR 820 045 6	2.0	TBA	04295 NUR 769 060 6	1.0	TBA	04384 PA 821 445 6	3.0	R
			04193 NUR 820 046 6	2.0	TBA	04296 NUR 769 061 6	1.0	TBA	04385 PA 821 446 6	3.0	R
			04194 NUR 820 047 6	2.0	TBA	04297 NUR 769 062 6	1.0	TBA	04386 PA 821 447 6	3.0	R
			04195 NUR 820 048 6	2.0	TBA	04298 NUR 769 063 6	1.0	TBA	04387 PA 821 448 6	3.0	R
			04196 NUR 820 049 6	2.0	TBA	04299 NUR 769 064 6	1.0	TBA	04388 PA 821 449 6	3.0	R
			04197 NUR 820 050 6	2.0	TBA	04300 NUR 769 065 6	1.0	TBA	04389 PA 821 450 6	3.0	R
			04198 NUR 820 051 6	2.0	TBA	04301 NUR 769 066 6	1.0	TBA	04390 PA 821 451 6	3.0	R
			04199 NUR 820 052 6	2.0	TBA	04302 NUR 769 067 6	1.0	TBA	04391 PA 821 452 6	3.0	R
			04200 NUR 820 053 6	2.0	TBA	04303 NUR 769 068 6	1.0	TBA	04392 PA 821 453 6	3.0	R
			04201 NUR 820 054 6	2.0	TBA	04304 NUR 769 069 6	1.0	TBA	04393 PA 821 454 6	3.0	R
			04202 NUR 820 055 6	2.0	TBA	04305 NUR 769 070 6	1.0	TBA	04394 PA 821 455 6	3.0	R
			04203 NUR 820 056 6	2.0	TBA	04306 NUR 769 071 6	1.0	TBA	04395 PA 821 456 6	3.0	R
			04204 NUR 820 057 6	2.0	TBA	04307 NUR 769 072 6	1.0	TBA	04396 PA 821 457 6	3.0	R
			04205 NUR 820 058 6	2.0	TBA	04308 NUR 769 073 6	1.0	TBA	04397 PA 821 458 6	3.0	R
			04206 NUR 820 059 6	2.0	TBA	04309 NUR 769 074 6	1.0	TBA	04398 PA 821 459 6	3.0	R
			04207 NUR 820 060 6	2.0	TBA	04310 NUR 769 075 6	1.0	TBA	04399 PA 821 460 6	3.0	R
			04208 NUR 820 061 6	2.0	TBA	04311 NUR 769 076 6	1.0	TBA	04400 PA 821 461 6	3.0	R
			04209 NUR 820 062 6	2.0	TBA	04312 NUR 769 077 6	1.0	TBA	04401 PA 821 462 6	3.0	R
			04210 NUR 820 063 6	2.0	TBA	04313 NUR 769 078 6	1.0	TBA	04402 PA 821 463 6	3.0	R
			04211 NUR 820 064 6	2.0	TBA	04314 NUR 769 079 6	1.0	TBA	04403 PA 821 464 6	3.0	R
			04212 NUR 820 065 6	2.0	TBA	04315 NUR 769 080 6	1.0	TBA	04404 PA 821 465 6	3.0	R
			04213 NUR 820 066 6	2.0	TBA	04316 NUR 769 081 6	1.0	TBA	04405 PA 821 466 6	3.0	R
			04214 NUR 820 067 6	2.0	TBA	04317 NUR 769 082 6	1.0	TBA	04406 PA 821 467 6	3.0	R
			04215 NUR 820 068 6	2.0	TBA	04318 NUR 769 083 6	1.0	TBA	04407 PA 821 468 6	3.0	R
			04216 NUR 820 069 6	2.0	TBA	04319 NUR 769 084 6	1.0	TBA	04408 PA 821 469 6	3.0	R
			04217 NUR 820 070 6	2.0	TBA	04320 NUR 769 085 6	1.0	TBA	04409 PA 821 470 6	3.0	R
			04218 NUR 820 071 6	2.0	TBA	04321 NUR 769 086 6	1.0	TBA	04410 PA 821 471 6	3.0	R
			04219 NUR 820 072 6	2.0	TBA	04322 NUR 769 087 6	1.0	TBA	04411 PA 821 472 6	3.0	R
			04220 NUR 820 073 6	2.0	TBA	04323 NUR 769 088 6	1.0	TBA	04412 PA 821 473 6	3.0	R
			04221 NUR 820 074 6	2.0	TBA	04324 NUR 769 089 6	1.0	TBA	04413 PA 821 474 6	3.0	R
			04222 NUR 820 075 6	2.0	TBA	04325 NUR 769 090 6	1.0	TBA	04414 PA 821 475 6	3.0	R
			04223 NUR 820 076 6	2.0	TBA	04326 NUR 769 091 6	1.0	TBA	04415 PA 821 476 6	3.0	R
			04224 NUR 820 077 6	2.0	TBA	04327 NUR 769 092 6	1.0	TBA	04416 PA 821 477 6	3.0	R
			04225 NUR 820 078 6	2.0	TBA	04328 NUR 769 093 6	1.0	TBA	04417 PA 821 478 6	3.0	R
			04226 NUR 820 079 6	2.0	TBA	04329 NUR 769 094 6	1.0	TBA	04418 PA 821 479 6	3.0	

Table with multiple columns containing names, numbers, and codes. The table is organized into several vertical sections, likely representing different categories or groups of data. Each entry typically consists of a name, a number, and a code, with some entries including additional identifiers or symbols.

GUARANTEED LOW Prices

On All Your School Needs At

Office DEPOT.

Computers To Fit Any Budget

Starting At \$699

COMPAQ
HEWLETT PACKARD Pavilion
TOSHIBA

Incredible Values Every Day
At Our Copy & Print Center!

5 STAR

8 1/2 x 11' Color Copies
with any purchase of \$5.00 or more*

*Being your nearest or any purchase of \$5.00 or more at Office Depot to receive free offer. Offer good for one side, standard, 8 1/2 x 11" copies. Max print speed of 100 ppm. Limit one request per customer. Non-refundable. Coupon cannot be combined. *Restrictions apply. Reproduction not included. Offer expires 12/31/98. Offer good at any Office Depot Copy & Print Center. Coupon Code 2199.

Lexington
1555 New Circle Rd. N.E.
(At Woodhill Dr.)
3626 NICHOLS AVE
3020 Nicholasville Rd. #185
(Southpark Shopping Center)
(606) 971-1111

OFFER VALID: Two-Year Best Buy Price Guarantee. *Lowest Price Guarantee. Office Depot, Office Max, Office World, Office Supercenter & Office Express. ©1998 Office Depot, Inc. All rights reserved. Office Depot, Office Max, Office World, Office Supercenter & Office Express are trademarks of Office Depot, Inc. Office Depot is a registered service mark of Office Depot, Inc. Office Depot, Office Max, Office World, Office Supercenter & Office Express are registered trademarks of Office Depot, Inc. Office Depot, Office Max, Office World, Office Supercenter & Office Express are registered trademarks of Office Depot, Inc. Office Depot, Office Max, Office World, Office Supercenter & Office Express are registered trademarks of Office Depot, Inc.

0818 SPI 641 001 23	3.0	T	0200PM	0832 SW 601 202 4'	2.0	W	0800PM	0846 TA 390 003 40	1.0	TBA
0819 SPI 642 001 26	3.0	MWF	0100PM	0833 SW 601 402 12	2.0	W	0800PM	0847 TA 390 004 40	1.0	TBA
0820 SPI 748 001 20	0.0	TBA		0834 SW 617 201 16	3.0	M	0800PM	0848 TA 390 005 28	1.0	W
0821 SPI 748 001 20	0.0	TBA		0835 SW 620 201 20	4.0	W	0800PM	0849 TA 390 006 38	1.0	TBA
0822 SPI 748 001 20	0.0	TBA		0836 SW 620 203 19	4.0	T	0800PM	0850 TA 391 001 38	1.0	TBA
0823 SPI 776 001 13	3.0	W	0200PM	0837 SW 620 401 14	4.0	T	0800PM	0851 TA 391 002 38	1.0	TBA
0824 SPI 780 001 20	1.0	TBA		0838 SW 620 402 14	4.0	T	0800PM	0852 TA 391 003 38	1.0	TBA
0825 SPI 780 001 15	3.0	R	1100AM	0839 SW 620 403 14	4.0	W	0800PM	0853 TA 391 004 40	1.0	TBA
0826 STA 200 010 11	3.0	MW	0100PM	0840 SW 620 404 16	4.0	R	0800PM	0854 TA 391 005 38	1.0	TBA
				0841 SW 630 401 14	4.0	M	0800PM	0855 TA 391 006 38	1.0	TBA
				0842 SW 630 402 17	4.0	T	0800PM	0856 TA 391 007 38	1.0	TBA
				0843 SW 630 403 18	4.0	R	0800PM	0857 TA 391 008 38	1.0	TBA
				0844 SW 640 401 3'	5.0	W	0800PM	0858 TA 391 009 38	1.0	TBA
				0845 SW 641 201 6	5.0	W	0800PM	0859 TA 391 010 38	1.0	TBA
				0846 SW 641 203 6	5.0	W	0800PM	0900 TA 391 011 38	1.0	TBA
				0847 SW 641 204 1'	5.0	W	0800PM	0901 TA 391 012 38	1.0	TBA
				0848 SW 641 205 6	5.0	W	0800PM	0902 TA 391 013 38	1.0	TBA
				0849 SW 641 201 2'	5.0	W	0800PM	0903 TA 391 014 38	1.0	TBA
				0850 SW 641 402 4'	5.0	W	0800PM	0904 TA 391 015 38	1.0	TBA
				0851 SW 641 401 6	5.0	W	0800PM	0905 TA 391 016 38	1.0	TBA
				0852 SW 641 402 27	3.0	T	0800PM	0906 TA 391 017 38	1.0	TBA
				0853 SW 700 401 7	3.0	T	0800PM	0907 TA 391 018 38	1.0	TBA
				0854 SW 700 402 15	3.0	M	0800PM	0908 TA 391 019 38	1.0	TBA
				0855 SW 700 403 12	3.0	M	0800PM	0909 TA 391 020 38	1.0	TBA
				0856 SW 701 404 7	3.0	R	0800PM	0910 TA 391 021 38	1.0	TBA
				0857 SW 701 204 1'	2.0	T	0800PM	0911 TA 391 022 38	1.0	TBA
				0858 SW 701 402 1'	2.0	M	0800PM	0912 TA 391 023 38	1.0	TBA
				0859 SW 720 001 10	2.0	T	0800PM	0913 TA 391 024 38	1.0	TBA
				0860 SW 720 002 13	2.0	T	0800PM	0914 TA 391 025 38	1.0	TBA
				0861 SW 720 001 10	2.0	T	0800PM	0915 TA 391 026 38	1.0	TBA
				0862 SW 722 001 1'	3.0	M	0800PM	0916 TA 391 027 38	1.0	TBA
				0863 SW 722 003 1'	3.0	M	0800PM	0917 TA 391 028 38	1.0	TBA
				0864 SW 722 402 3'	3.0	M	0800PM	0918 TA 391 029 38	1.0	TBA
				0865 SW 730 001 9	3.0	T	0800PM	0919 TA 391 030 38	1.0	TBA
				0866 SW 730 002 9	3.0	R	0800PM	0920 TA 391 031 38	1.0	TBA
				0867 SW 730 401 13	3.0	M	0800PM	0921 TA 391 032 38	1.0	TBA
				0868 SW 730 402 13	3.0	M	0800PM	0922 TA 391 033 38	1.0	TBA
				0869 SW 740 001 5'	5.0	F	1000AM	0923 TA 391 034 38	1.0	TBA
				0870 SW 740 201 3'	5.0	M	0800PM	0924 TA 391 035 38	1.0	TBA
				0871 SW 740 401 4'	5.0	M	0800PM	0925 TA 391 036 38	1.0	TBA
				0872 SW 740 407 5'	5.0	W	0800PM	0926 TA 391 037 38	1.0	TBA
				0873 SW 741 201 11	5.0	T	0800PM	0927 TA 391 038 38	1.0	TBA
				0874 SW 741 202 5'	5.0	W	0800PM	0928 TA 391 039 38	1.0	TBA
				0875 SW 741 206 15	5.0	M	0800PM	0929 TA 391 040 38	1.0	TBA
				0876 SW 741 401 13	5.0	M	0800PM	0930 TA 391 041 38	1.0	TBA
				0877 SW 741 402 11	5.0	TBA		0931 TA 391 042 38	1.0	TBA
				0878 SW 741 403 3'	5.0	W	0800PM	0932 TA 391 043 38	1.0	TBA
				0879 SW 741 404 3'	5.0	R	0800PM	0933 TA 391 044 38	1.0	TBA
				0880 SW 741 405 3'	5.0	W	0800PM	0934 TA 391 045 38	1.0	TBA
				0881 SW 750 401 14	2.0	M	0800PM	0935 TA 391 046 38	1.0	TBA
				0882 SW 750 402 6	2.0	T	0800PM	0936 TA 391 047 38	1.0	TBA
				0883 SW 750 403 8	2.0	W	0800PM	0937 TA 391 048 38	1.0	TBA
				0884 SW 750 404 20	2.0	R	0800PM	0938 TA 391 049 38	1.0	TBA
				0885 SW 751 205 2'	2.0	R	0800PM	0939 TA 391 050 38	1.0	TBA
				0886 SW 751 401 4'	2.0	R	0800PM	0940 TA 391 051 38	1.0	TBA
				0887 SW 780 001 10	1.0	TBA		0941 TA 391 052 38	1.0	TBA
				0888 SW 780 201 12	1.0	TBA		0942 TA 391 053 38	1.0	TBA
				0889 SW 780 202 7	1.0	TBA		0943 TA 391 054 38	1.0	TBA
				0890 SW 780 203 9	1.0	TBA		0944 TA 391 055 38	1.0	TBA
				0891 SW 781 001 8	3.0	F	0330PM	0945 TA 391 056 38	1.0	TBA
				0892 SW 785 001 8	1.0	F	0430PM	0946 TA 391 057 38	1.0	TBA
				0893 TA 101 002 1'	3.0	MWF	0100PM	0947 TA 391 058 38	1.0	TBA
				0894 TA 131 001 34	1.0	TBA		0948 TA 391 059 38	1.0	TBA
				0895 TA 225 002 1'	3.0	MWF	0200PM	0949 TA 391 060 38	1.0	TBA
				0896 TA 228 001 1'	3.0	MWF	0900AM	0950 TA 391 061 38	1.0	TBA
				0897 TA 360 001 10	3.0	MW	1000AM	0951 TA 391 062 38	1.0	TBA
				0898 TA 360 001 10	3.0	MW	1000AM	0952 TA 391 063 38	1.0	TBA
				0899 TA 365 001 1'	3.0	MW	1000AM	0953 TA 391 064 38	1.0	TBA
				0900 TA 374 001 1'	3.0	T	0900AM	0954 TA 391 065 38	1.0	TBA
				0901 TA 377 001 6	3.0	TR	0900AM	0955 TA 391 066 38	1.0	TBA
				0902 TA 380 201 3'	3.0	T	0330PM	0956 TA 391 067 38	1.0	TBA
				0903 TA 380 202 3'	3.0	T	0330PM	0957 TA 391 068 38	1.0	TBA
				0904 TA 380 203 5'	3.0	TR	0330PM	0958 TA 391 069 38	1.0	TBA
				0905 TA 380 204 5'	3.0	TR	0330PM	0959 TA 391 070 38	1.0	TBA
				0906 TA 390 001 39	1.0	TBA		0960 TA 391 071 38	1.0	TBA
				0907 TA 390 002 40	1.0	TBA		0961 TA 391 072 38	1.0	TBA

Make This The Last Year You Resolve To Lose Weight!

Call Diet Center NOW!

- Individualized for Your Lifestyle
- Easy to Follow Plans
- One-on-one Counseling
- Immediate Results

Only at **Diet Center**
2035 Regency Rd. 276-3509

RADISSON PLAZA HOTEL
LEXINGTON
JOB OPPORTUNITIES
Attn: U.K. Students

We have several positions open
Food servers
Desk clerks
Cooks

Bartender/Barback/Cocktail
***Hotel/Motel Internships available
Great downtown location - fun environment
Apply in person - 369 W. Vine St. EOE

TIME FOR KERNEL CHANGE

COMPLETE LINE OF:

- Sports Nutrition Products
- Vitamins and Minerals
- Herbs

Functional Smoothies
Low Fat Fruit Smoothies
Workout Smoothies
Immune Building Smoothies

CREATINE
300 grams of PROLAB
FREE w/purchase of 300 gm bottle of PROLAB
One coupon per customer. With coupon only. Not valid with other offer. Exp 9/30/98

SMOOTHIE KING
Buy 1 Smoothie King Smoothie and get a second Smoothie of equal or lesser value FREE
One coupon per customer with coupon only. Not valid with other offer. Exp. 9/30/98

335-KING (5464)
2909 Richmond Rd.
Next to World's Gym

There's a place for you where we'll know your name...

WOODLAND CHRISTIAN CHURCH
(DISCIPLES OF CHRIST)

530 EAST HIGH STREET
(CORNER OF KENTUCKY AVE. & HIGH ST.)
266-3416

SUNDAY SCHOOL **SUNDAY WORSHIP**
9:30 AM 10:45 AM

LOOK FOR OUR VAN AT THE CORNER OF WOODLAND AVE. AND HILLTOP AROUND 10:15 AM.

A Benefit for **AIDS Volunteers of Lexington**
AIDS Medication Fund

A NIGHT WITH THE DIVAS

- Featuring: Entertainers from the greater Lexington area.
- Where: Club 141 West Vine St.
- When: August 25th, 1998
- Time: Doors open at 8 pm. Show starts at 9 pm.
- Cost: \$5 at the door

Hostess and show director, Franchesa Sanchez
Host and emcee, Jonathon Scott Conleton

Food Drinks Shows Prizes Games

Must be 21 to attend!!!

EAST KENTUCKY POWER COOPERATIVE, INC.
4775 LEXINGTON RD., P.O. BOX 707 WINCHESTER, KY 40392-0707
PHONE: (606) 744-4812 FAX: (606) 737-6050

ATTENTION
COMPUTER SCIENCE MAJORS AND
ELECTRICAL ENGINEERING STUDENTS

STUDENT-NEEDED FOR ELECTRIC UTILITY

East Kentucky Power Cooperative, Inc., an electric utility supplying two-thirds of the rural areas in Kentucky, is looking to hire a Sophomore or Junior electrical engineering student or computer science major. The student will work to maintain a Maintenance Management System for power lines and substations, which includes testing of the system and maintenance of data. Interested applicants should have knowledge of database systems including Access, Oracle or Sybase and Microsoft Excel spreadsheet software. Student will provide assistance to system protection engineer in the Power Delivery Maintenance Process who is responsible for calculation of relay settings, relay coordination, relay systems upgrades, and purchasing of substation equipment. Work schedules are flexible and would consist of approximately 20 hours per week while classes were in session and 40 hours per week through the summer of 1999. Applications may be obtained by calling the Human Resources Team at the number shown above and must be submitted by September 4, 1998. Further information about East Kentucky Power Cooperative can be obtained from our Internet site at EKPC.com.

Don't Miss Out!

Don't miss the opportunity to move to Lexington's newest apartment community! At **University Village**, everything is right at your doorstep - shopping, entertainment, dining and, of course, the UK campus.

University Village can provide all the amenities you expect from a premier apartment community:

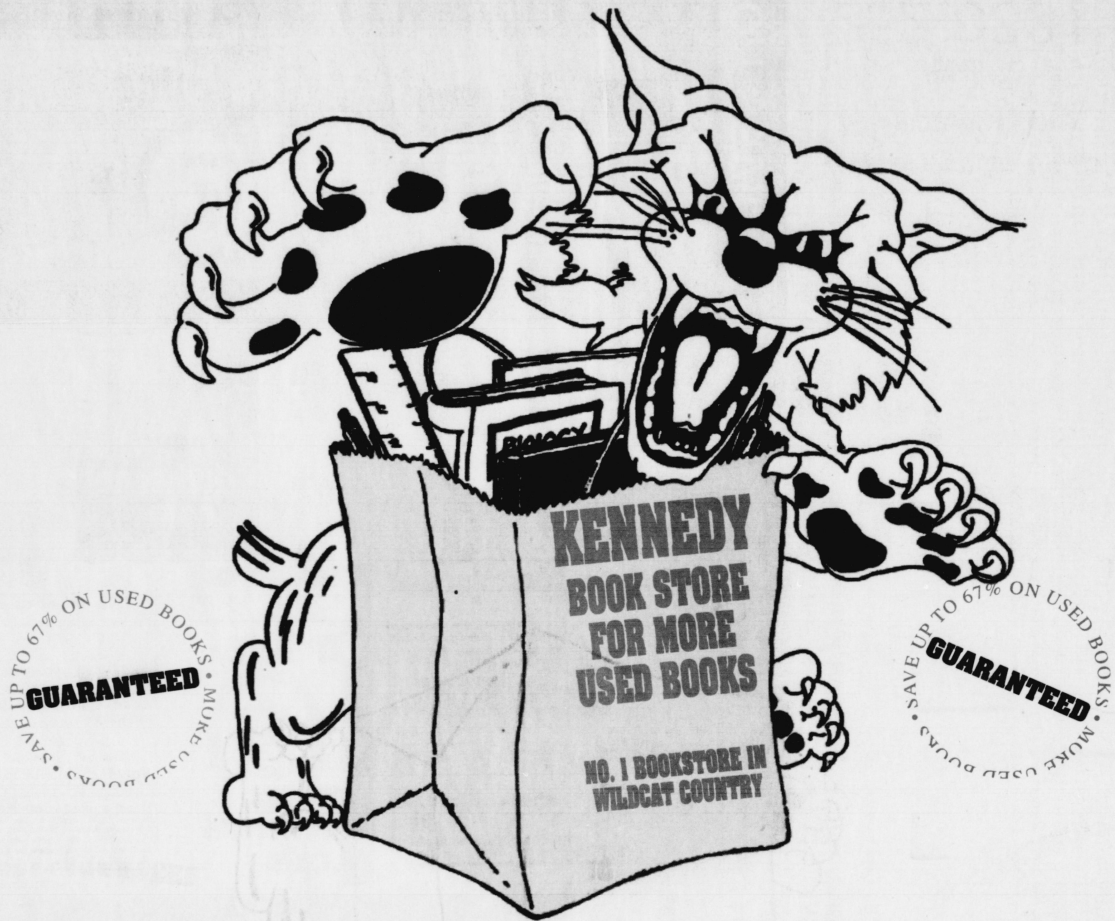
- Two bedroom/two bath apartments
- Washer, dryer and microwave
- Two phone lines plus a computer line in each unit.
- Private balconies.
- Plenty of parking, and more!
- \$675 per month
- 9 month leases available

Don't wait! Call 231-6160 today for more information.

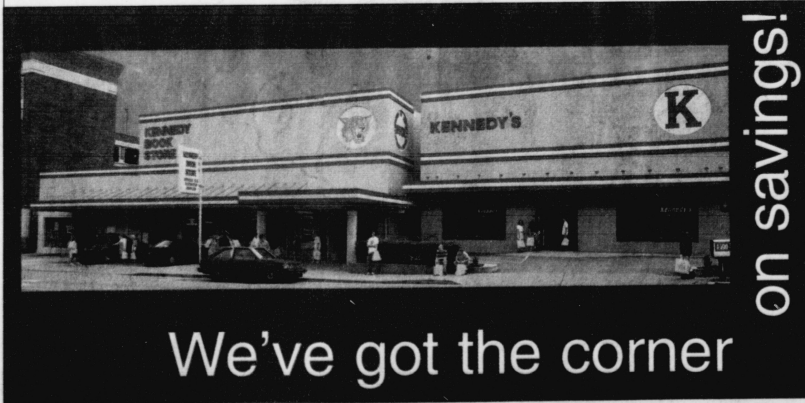
00096 AE 895 002 3'	C
00097 AE 895 004 3'	C
00098 AE 895 006 3'	C
00114 AH 399 001 3'	C
00115 AH 399 003 3'	C
00116 AH 399 005 3'	C
00136 AH 780 001 2'	C
00137 AH 780 002 2'	C
00138 AH 780 003 2'	C
00173 AS 395 001 5'	C
00174 AS 395 002 5'	C
00175 AS 395 004 4'	C
00176 AS 395 006 4'	C
00178 AS 395 008 4'	C
00181 AS 395 009 3'	C
00182 AS 395 010 4'	C
00183 AS 395 011 5'	C
00184 AS 395 012 6'	C
00185 AS 395 013 7'	C
00186 AS 395 014 8'	C
00187 AS 395 015 9'	C
00188 AS 395 016 10'	C
00189 AS 395 017 11'	C
00190 AS 395 018 12'	C
00191 AS 395 019 13'	C
00192 AS 395 020 14'	C
00193 AS 395 021 15'	C
00194 AS 395 022 16'	C
00195 AS 395 023 17'	C
00196 AS 395 024 18'	C
00197 AS 395 025 19'	C
00198 AS 395 026 20'	C
00199 AS 395 027 21'	C
00200 AS 395 028 22'	C
00201 AS 395 029 23'	C
00202 AS 395 030 24'	C
00203 AS 395 031 25'	C
00204 AS 395 032 26'	C
00205 AS 395 033 27'	C
00206 AS 395 034 28'	C
00207 AS 395 035 29'	C
00208 AS 395 036 30'	C
00209 AS 395 037 31'	C
00210 AS 395 038 32'	C
00211 AS 395 039 33'	C
00212 AS 395 040 34'	C
00213 AS 395 041 35'	C
00214 AS 395 042 36'	C
00215 AS 395 043 37'	C
00216 AS 395 044 38'	C
00217 AS 395 045 39'	C
00218 AS 395 046 40'	C
00219 AS 395 047 41'	C
00220 AS 395 048 42'	C
00221 AS 395 049 43'	C
00222 AS 395 050 44'	C
00223 AS 395 051 45'	C
00224 AS 395 052 46'	C
00225 AS 395 053 47'	C
00226 AS 395 054 48'	C
00227 AS 395 055 49'	C
00228 AS 395 056 50'	C
00229 AS 395 057 51'	C
00230 AS 395 058 52'	C
00231 AS 395 059 53'	C
00232 AS 395 060 54'	C
00233 AS 395 061 55'	C
00234 AS 395 062 56'	C
00235 AS 395 063 57'	C
00236 AS 395 064 58'	C
00237 AS 395 065 59'	C
00238 AS 395 066 60'	C
00239 AS 395 067 61'	C
00240 AS 395 068 62'	C
00241 AS 395 069 63'	C
00242 AS 395 070 64'	C
00243 AS 395 071 65'	C
00244 AS 395 072 66'	C
00245 AS 395 073 67'	C
00246 AS 395 074 68'	C
00247 AS 395 075 69'	C
00248 AS 395 076 70'	C
00249 AS 395 077 71'	C
00250 AS 395 078 72'	C
00251 AS 395 079 73'	C
00252 AS 395 080 74'	C
00253 AS 395 081 75'	C
00254 AS 395 082 76'	C
00255 AS 395 083 77'	C
00256 AS 395 084 78'	C
00257 AS 395 085 79'	C
00258 AS 395 086 80'	C
00259 AS 395 087 81'	C
00260 AS 395 088 82'	C
00261 AS 395 089 83'	C
00262 AS 395 090 84'	C
00263 AS 395 091 85'	C
00264 AS 395 092 86'	C
00265 AS 395 093 87'	C
00266 AS 395 094 88'	C
00267 AS 395 095 89'	C
00268 AS 395 096 90'	C
00269 AS 395 097 91'	C
00270 AS 395 098 92'	C
00271 AS 395 099 93'	C
00272 AS 395 100 94'	C
00273 AS 395 101 95'	C
00274 AS 395 102 96'	C
00275 AS 395 103 97'	C
00276 AS 395 104 98'	C
00277 AS 395 105 99'	C
00278 AS 395 106 100'	C
00279 AS 395 107 101'	C
00280 AS 395 108 102'	C
00281 AS 395 109 103'	C
00282 AS 395 110 104'	C
00283 AS 395 111 105'	C
00284 AS 395 112 106'	C
00285 AS 395 113 107'	C
00286 AS 395 114 108'	C
00287 AS 395 115 109'	C
00288 AS 395 116 110'	C
00289 AS 395 117 111'	C
00290 AS 395 118 112'	C
00291 AS 395 119 113'	C
00292 AS 395 120 114'	C
00293 AS 395 121 115'	C
00294 AS 395 122 116'	C
00295 AS 395 123 117'	C
00296 AS 395 124 118'	C
00297 AS 395 125 119'	C
00298 AS 395 126 120'	C
00299 AS 395 127 121'	C
00300 AS 395 128 122'	C
00301 AS 395 129 123'	C
00302 AS 395 130 124'	C
00303 AS 395 131 125'	C
00304 AS 395 132 126'	C
00305 AS 395 133 127'	C
00306 AS 395 134 128'	C
00307 AS 395 135 129'	C
00308 AS 395 136 130'	C
00309 AS 395 137 131'	C
00310 AS 395 138 132'	C
00311 AS 395 139 133'	C
00312 AS 395 140 134'	C
00313 AS 395 141 135'	C
00314 AS 395 142 136'	C
00315 AS 395 143 137'	C
00316 AS 395 144 138'	C
00317 AS 395 145 139'	C
00318 AS 395 146 140'	C
00319 AS 395 147 141'	C
00320 AS 395 148 142'	C
00321 AS 395 149 143'	C
00322 AS 395 150 144'	C
00323 AS 395 151 145'	C
00324 AS 395 152 146'	C
00325 AS 395 153 147'	C
00326 AS 395 154 148'	C
00327 AS 395 155 149'	C
00328 AS 395 156 150'	C
00329 AS 395 157 151'	C
00330 AS 395 158 152'	C
00331 AS 395 159 153'	C
00332 AS 395 160 154'	C
00333 AS 395 161 155'	C
00334 AS 395 162 156'	C
00335 AS 395 163 157'	C
00336 AS 395 164 158'	C
00337 AS 395 165 159'	C
00338 AS 395 166 160'	C
00339 AS 395 167 161'	C
00340 AS 395 168 162'	C
00341 AS 395 169 163'	C
00342 AS 395 170 164'	C
00343 AS 395 171 165'	C
00344 AS 395 172 166'	C
00345 AS 395 173 167'	C
00346 AS 395 174 168'	C
00347 AS 395 175 169'	C
00348 AS 395 176 170'	C
00349 AS 395 177 171'	C
00350 AS 395 178 172'	C
00351 AS 395 179 173'	C
00352 AS 395 180 174'	C
00353 AS 395 181 175'	C
00354 AS 395 182 176'	C
00355 AS 395 183 177'	C
00356 AS 395 184 178'	C
00357 AS 395 185 179'	C
00358 AS 395 186 180'	C
00359 AS 395 187 181'	C
00360 AS 395 188 182'	C
00361 AS 395 189 183'	C
00362 AS 395 190 184'	C
00363 AS 395 191 185'	C
00364 AS 395 192 186'	C
00365 AS 395 193 187'	C
00366 AS 395 194 188'	C
00367 AS 395 195 189'	C
00368 AS 395 196 190'	C
00369 AS 395 197 191'	C
00370 AS 395 198 192'	C
00371 AS 395 199 193'	C
00372 AS 395 200 194'	C
00373 AS 395 201 195'	C
00374 AS 395 202 196'	C
00375 AS 395 203 197'	C
00376 AS 395 204 198'	C
00377 AS 395 205 199'	C
00378 AS 395 206 200'	C
00379 AS 395 207 201'	C
00380 AS 395 208 202'	C
00381 AS 395 209 203'	C
00382 AS 395 210 204'	C
00383 AS 395 211 205'	C
00384 AS 395 212 206'	C
00385 AS 395 213 207'	C
00386 AS 395 214 208'	C
00387 AS 395 215 209'	C
00388 AS 395 216 210'	C
00389 AS 395 217 211'	C
00390 AS 395 218 212'	C
00391 AS 395 219 213'	C
00392 AS 395 220 214'	C
00393 AS 395 221 215'	C
00394 AS 395 222 216'	C
00395 AS 395 223 217'	C
00396 AS 395 224 218'	C
00397 AS 395 225 219'	C
00398 AS 395 226 220'	C
00399 AS 395 227 221'	C
00400 AS 395 228 222'	C
00401 AS 395 229 223'	C
00402 AS 395 230 224'	C
00403 AS 395 231 225'	C
00404 AS 395 232 226'	C
00405 AS 395 233 227'	C
00406 AS 395 234 228'	C
00407 AS 395 235 229'	C
00408 AS 395 236 230'	C
00409 AS 395 237 231'	C
00410 AS 395 238 232'	C
00411 AS 395 239 233'	C
00412 AS 395 240 234'	C
00413 AS 395 241 235'	C
00414 AS 395 242 236'	C
00415 AS 395 243 237'	C
00416 AS 395 244 238'	C
00417 AS 395 245 239'	C
00418 AS 395 246 240'	C
00419 AS 395 247 241'	C
00420 AS 395 248 242'	C
00421 AS 395 249 243'	C
00422 AS 395 250 244'	C
00423 AS 395 251 245'	C
00424 AS 395 252 246'	C
00425 AS 395 253 247'	C
00426 AS 395 254 248'	C
00427 AS 395 255 249'	C
00428 AS 395 256 250'	C
00429 AS 395 257 251'	C
00430 AS 395 258 252'	C
00431 AS 395 259 253'	C
00432 AS 395 260 254'	C
00433 AS 395 261 255'	C
00434 AS 395 262 256'	C
00435 AS 395 263 257'	C
00436 AS 395 264 258'	C
00437 AS 395 265 259'	C
00438 AS 395 266 260'	C
00439 AS 395 267 261'	C
00440 AS 395 268 262'	C
00441 AS 395 269 263'	C
00442 AS 395 270 264'	C
00443 AS 395 271 265'	C
00444 AS 395 272 266'	C
00445 AS 395 273 267'	C
00446 AS 395 274 268'	C
00447 AS 395 275 269'	C
00448 AS 395 276 270'	C
00449 AS 395 277 271'	C
00450 AS 395 278 272'	C
00451 AS 395 279 273'	C
00452 AS 395 280 274'	C
00453 AS 395 281 275'	C
00454 AS 395 282 276'	C
00455 AS 395 283 277'	C
00456 AS 395 284 278'	C
00457 AS 395 285 279'	C
00458 AS 395 286 280'	C
00459 AS 395 287 281'	C
00460 AS 395 288 282'	C
00461 AS 395 289 283'	C
00462 AS 395 290 284'	C
00463 AS 395 291 285'	C
00464 AS 395 292 286'	C
00465 AS 395 293 287'	C
00466 AS 395 294 288'	C
00467 AS 395 295 289'	C
00468 AS 395 296 290'	C
00469 AS 395 297 291'	C
00470 AS 395 298 292'	C
00471 AS 395 299 293'	C
00472 AS 395 300 294'	C
00473 AS 395 301 295'	C
00474 AS 395 302 296'	C
00475 AS 395 303 297'	C
00476 AS 395 304 298'	C
00477 AS 395 305 299'	C
00478 AS 395 306 300'	C
00479 AS 395 307 301'	C
00480 AS 395 308 302'	C
00481 AS 395 309 303'	C
00482 AS 395 310 304'	C
00483 AS 395 311 305'	C
00484 AS 395 312 306'	C
00485 AS 395 313 307'	C
00486 AS 395 314 308'	C
00487 AS 395 315 309'	C
00488 AS 395 316 310'	C
00489 AS 395 317 311'	C
00490 AS 395 318 312'	C
00491 AS 395 319 313'	C
00492 AS 395 320 314'	C
00493 AS 395 321 315'	C
00494 AS 395 322 316'	C
00495 AS 395 323 317'	C
00496 AS 395 324 318'	C
00497 AS 395 325 319'	C
00498 AS 395 326 320'	C
00499 AS 395 327 321'	C
00500 AS 395 328 322'	C

03720 MUP 104 001 3'	C
03721 MUP 104 002 3'	C
03722 MUP 105 001 3'	C
03723 MUP 105 002 3'	C
03724 MUP 107 001 9'	C
03725 MUP 108 001 9'	C
03727 MUP 109 001 7'	C
03728 MUP 110 001 7'	C
03729 MUP 111 001 10'	C
03730 MUP 112 001 6'	C
03731 MUP 112 002 6'	C
03732 MUP 113 001 4'	C
03734 MUP 113 001 4'	C
03736 MUP 115 001 7'	C
03738 MUP 117 001 10'	C
03739 MUP 117 002 10'	C
03740 MUP 118 001 2'	C
03741 MUP 118 001 2'	C
03742 MUP 120 001 10'	C
03743 MUP 120 001 10'	C
03744 MUP 201 001 9'	C
03745 MUP 201 001 9'	C
03746 MUP 201 002 9'	C
03747 MUP 201 003 9'	C
03748 MUP 201 004 9'	C
03749 MUP 202 002 8'	C
03750 MUP 202 003 8'	C
03751 MUP 202 004 4'	C
03752 MUP 202 005 10'	C
03753 MUP 202 006 10'	C
03754 MUP 202 007 9'	C
03755 MUP 202 008 9'	C
03756 MUP 203 001 9'	C
03757 MUP 203 001 9'	C
03758 MUP 204 002 3'	C
03759 MUP 204 002 3'	C
03760 MUP 205 001 9'	C
03761 MUP 205 001 9'	C
03762 MUP 207 001 10'	C
03763 MUP 208 001 6'	C
03764 MUP 209 001 12'	C
03765 MUP 210 001 5'	C

KENNEDY BOOK STORE



If saving money is your bag, be sure to get ours!



We've got the corner

on savings!

Corner of
Limestone
& Euclid

*"Your source for Official
UK Textbooks since
1950!"*

252-0331

Toll Free: 888-8GO-CATS

<http://www.kennedys.com>

