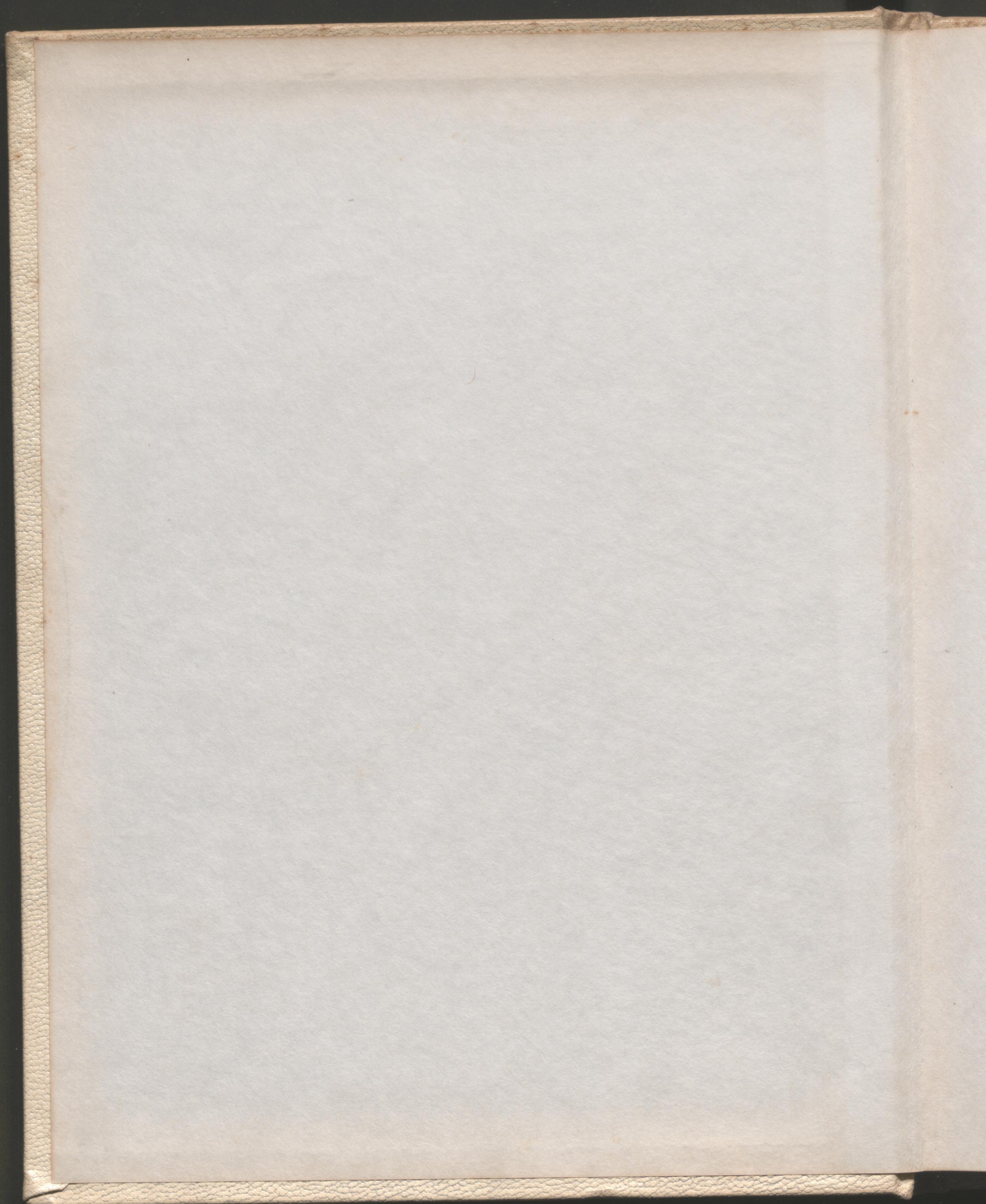
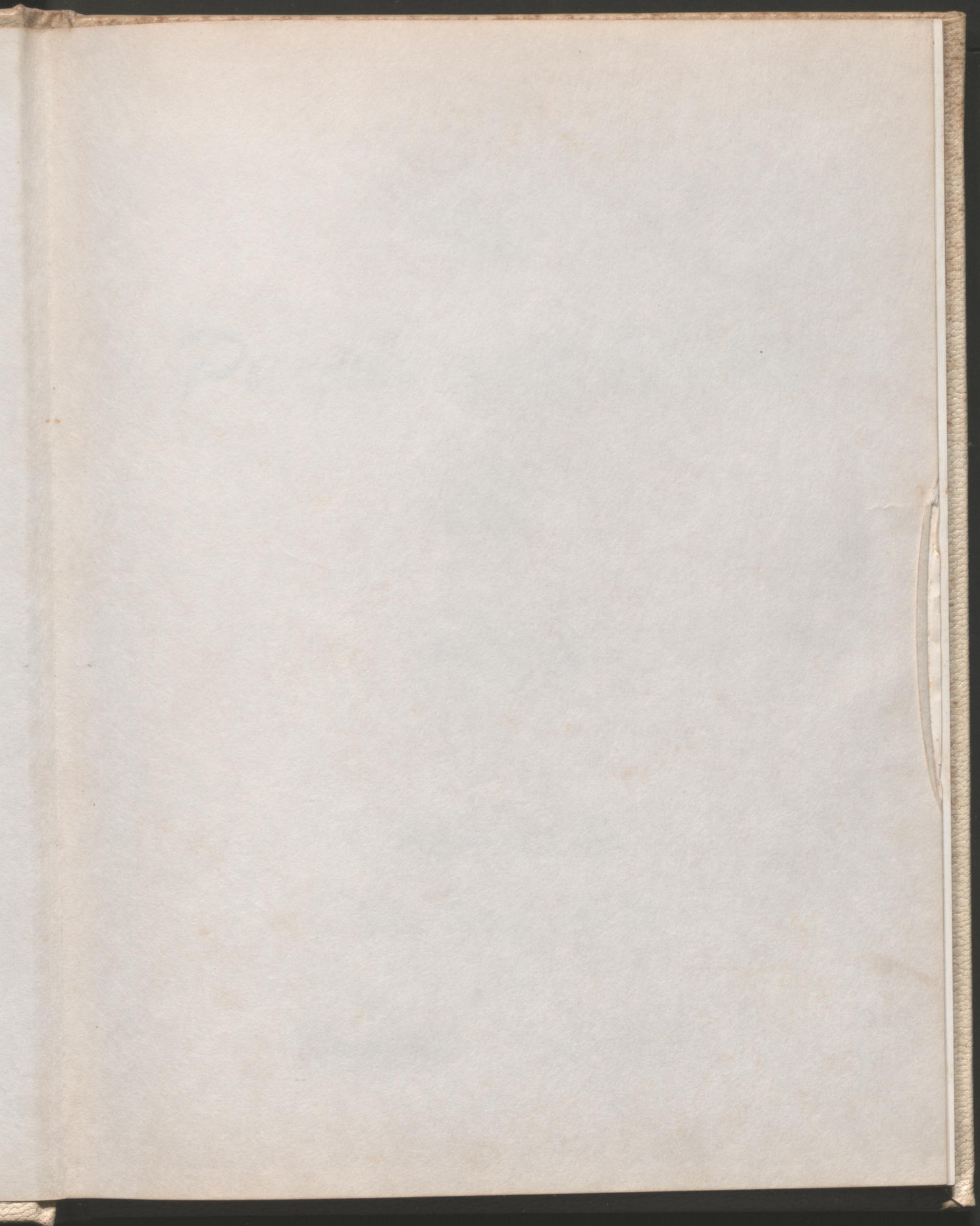
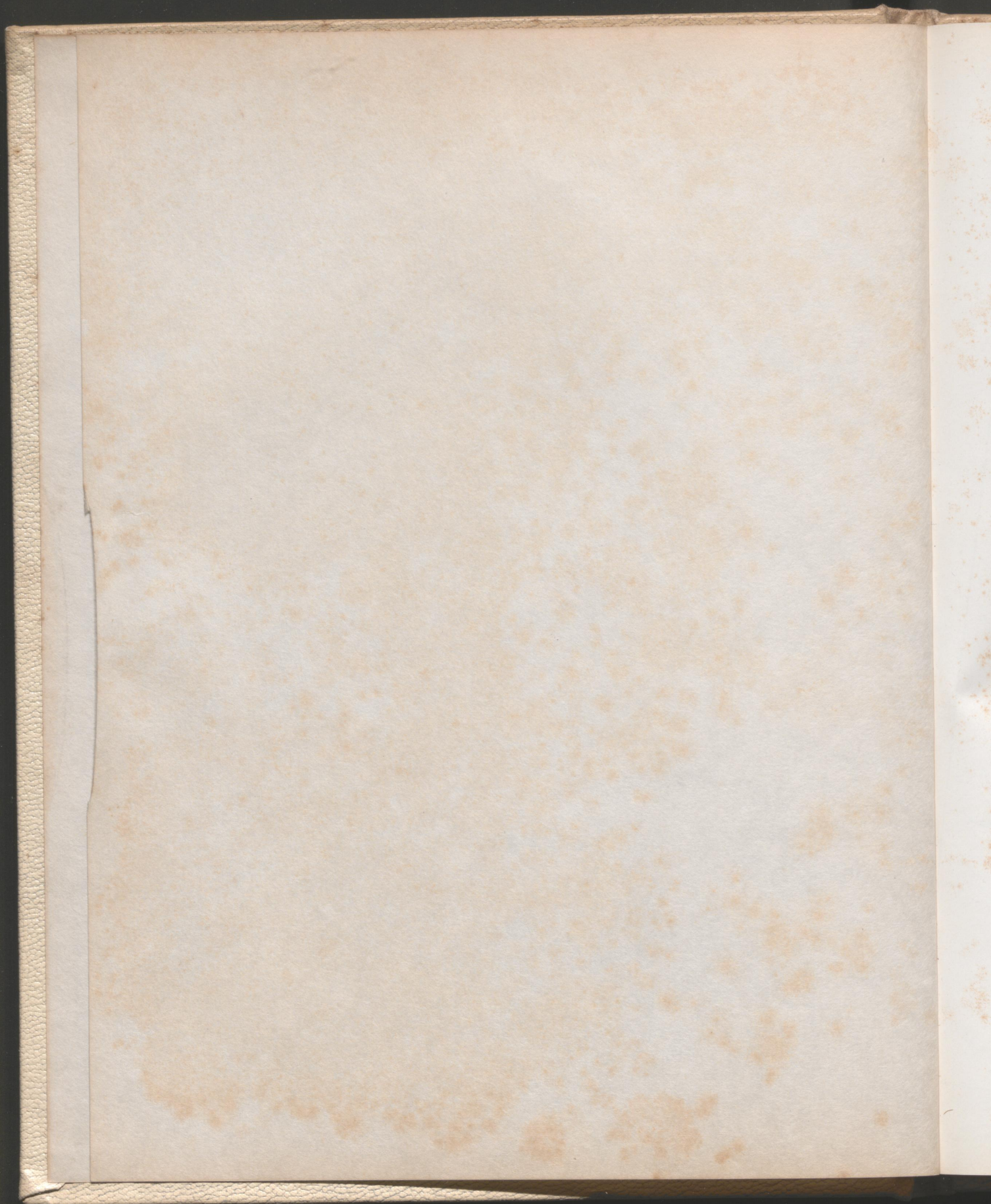


1956







*The
Purple and White
Of
1956*

*Published by
The Senior Class
of
University High School*

Dedication

UNIVERSITY OF KENTUCKY
LEXINGTON



COLLEGE OF EDUCATION
UNIVERSITY SCHOOL

Miss Mary West,
Mr. David C. McMurry

Dear Miss West and Mr. McMurry,
Our Senior Year has been the culmination
of many wonderful times at University
High School. Few things were lacking.

We regret that you who helped us through
the first three years of our high-school
education were unable to share this wonderful
year with us, the Class of '56.

Patient, tolerant, yet unassuming, Miss West;
you gave long years of the best efforts to
our school and followed the careers of your
many students with the genuine interest
that was so much a part of you.

Ambitious, enthusiastic, and exceedingly
energetic, always offering your best, "Mr. Mac";
you maintained high standards and the
rare ability which enabled you to inspire us
toward lofty purposes.

We dedicate this, our own Purple and White,
to you in appreciation for all that you did
to help mold our futures, and with the
hope that you will always be proud to
claim us as your former students.

In all Sincerity,
The Class of 1956
University High School

Faculty

"What greater or better gift can we offer the republic than to teach and instruct our youth."



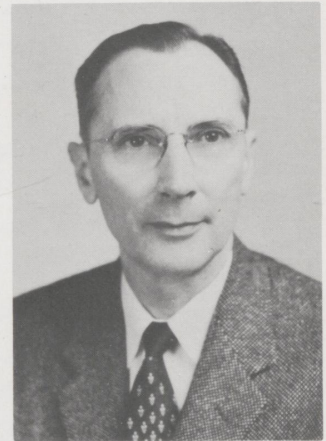
MORRIS BERDYNE CIERLEY
Director
Memphis State B. S.
Columbia University M. A.
Peabody College M. Ed.
University of Illinois D. Ed.



EUCLID LEON PORTER
Georgetown College B. A.
University of Kentucky M. A.



GRACE ANDERSON
Georgetown College B. A.
University of Chicago M. A.



DURBIN COLLINS KEMPER
Georgetown College B. S.
University of Kentucky M. A.



RUTH COLLINS OSBORNE
Georgetown College B. A.
University of Kentucky M. A.



WILLIAM ANDREW MCKENNEY
University of Kentucky B. A.
University of Kentucky M. A.



RUTH HOPE HAINES
Temple University B. S.
Columbia University M. A.

ANNA BROWNING PECK
Senior Class Sponsor
University of Kentucky B. A.
University of Kentucky M. A.



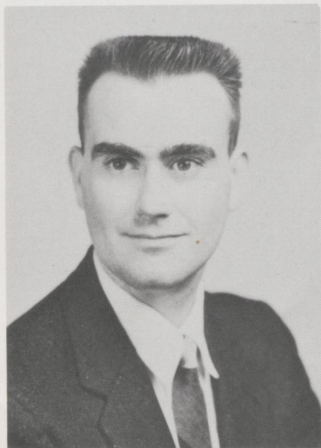
ELIZABETH ELLIS TAYLOR
University of Kentucky M. A.
University of Kentucky B. A.



ALMA VIRGINIA CARL
University of Kentucky B. A.
University of Kentucky M. A.



MARTHA VIRGINIA SHIPMAN
Arkansas Teacher's College L. I.
Arkansas University B. A.
Arkansas University M. A.



JOSEPH CALVIN THOMAS
Asbury College B. A.
University of Kentucky M. A.



STELLA SPICER GILB
Marjorie Webster S. Pe.
University of Kentucky B. A.
University of Kentucky M. A.



MARGARET ELLEN ROSER
University of Kentucky B. A.
University of Kentucky M. A.



SARA FRANCES LAMB
Murray State College
University of Kentucky B. A.



EDGAR McNABB JR.
Eastern Kentucky State College
University of Kentucky M. A.



MOLLY MILES
Marshall College
Berea College B. A.



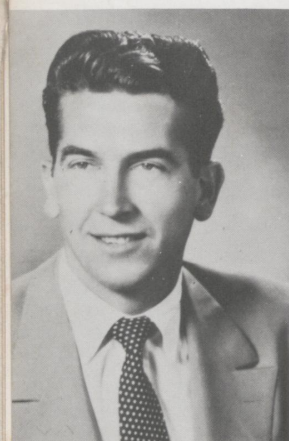
ANN LEE DUNAWAY
Mary Washington B. A.



KATHERINE HARELSON
University of Kentucky



BARBARA MYERS
University of Kentucky B. A.



EDWARD SHEMELYA
Eastern Kentucky State
College B. A.



PHYLLIS JEAN KLOECKER
University of Kentucky B. S.
New York University M. A.

Seniors



*The Senior Class
of
University High School
announces its Commencement Exercises
Friday evening, June first
Nineteen hundred fifty-six
eight o'clock
School Auditorium*



HUNTER DOBREE ADAMS
"Dobree"

Entered from Elementary
Y-Teens '53, '54, '55, Recreation Chairman '56; Y-Teen Basketball '53, '54, '56;
Inter-Club Council President '56; Band '53, '54, Second Vice-President '56;
Glee Club '55, '56; Central Kentucky Chorus '55; President Junior High Student
Government '53; Convocation Committee '54; U-Hi Lights '53, '54,
News Editor '55, Editor '56; National Honor Society '55, '56; National Honor
Scholarship Participant '56; Beta Club '55, '56; Beta Club Convention '56; Pep
Club '53, '54, '55, '56; Masque and Gavel '55, '56, Talent Show '54; Regional
Speech Contest '55, '56; Regional Music Contest '53, '56; Feature Editor
Annual '56; NOMA Shorthand Contest '55; Class Secretary '56; Cancer Speech
Contest '55; National Merit Scholarship Program Participant '56; Crowell-
Collier Salesmanship Award '55; Senior Play Cast '56; Y-Teen Swimming
Team '56; Teen Age Driving Rodeo '55; Tie for Third Place State Soil Con-
servation Essay Contest '56; Christmas Program Reader '53, '54; Enoch Grehn
Journalism Award '56.

"Then give the world the best you have,
And the best will come back to you."

ANNE WILSON ARMSTRONG
"Anne"

Entered from Elementary
Class Secretary '54, '56; President Junior High Student Government '54; Masque
and Gavel '55, Secretary-Treasurer '56; Talent Show '55, '56; NOMA Book-
keeping Contest '55; Winner Second Place, NOMA Shorthand Contest '56;
Regional Speech Festival '55; Regional Music Festival '54, '55, '56; State
Music Festival '55; Band '54, First Vice-President '55, '56; All State Band '55;
Christmas Program Reader '55, '56; Senior Play Cast '56; Y-Teens '54, '55, '56;
Pep Club '54, '55, '56; U-Hi Lights Staff '55, '56; Annual Staff Proofreader and
Typist '56; Convocation Committee '54; Crowell-Collier Salesmanship
Award '56.

"Diligence is the mother of good fortune."

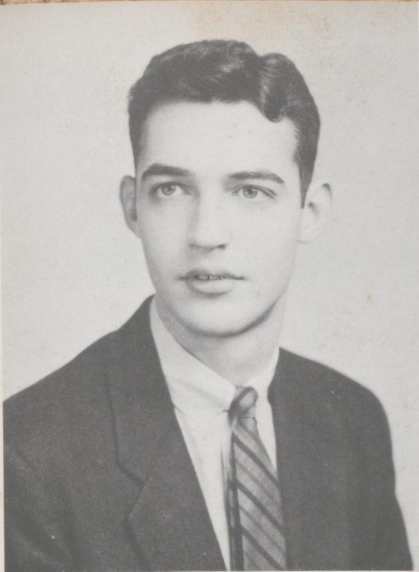


NANCY ADELE BROWN
"Nance"

Entered from Elementary
Glee Club '53, '54, '55, '56; Little Choir '53, '54, '55, '56; Double Trio '55,
'56; All State Chorus '56; Pep Club '53, '54, '55, '56; Y-Teens '53, '54, '55,
'56; Student Council '53, '54, '56; Beta Club '54, Treasurer '55, Candidate for
Kentucky-Indiana Beta Club Secretary '55, Beta Club Convention '55, '56;
National Honor Society '55, '56; Masque and Gavel '54, '56, Secretary-Treas-
urer '55, Talent Show '54, '55; Regional Speech Festival '53, '54, '55; State
Speech Festival '56; Regional Music Festival '55; State Music Festival '53,
'54, '55; State Cancer Speech Contest '54; Second Place State Cancer Contest
'55; Social Committee '53; Class Secretary '55; Girl's State Representative
'55; DAR Good Citizenship Award '56; Crowell-Collier Salesmanship Award
'55; Senior Play Cast '56; Prom Court '55, '56; U-Hi Lights Staff '53, '56,
Typist '54, Assistant Editor '55; Annual Editor '56; Margaret McLaughlin
Journalism Award '56; Participant Chemistry Day '56.

"It's good to be merry and wise."





WILLIAM ROBERT BROWN

"W. R."

Entered from Elementary
Junior High Basketball Team '53; Senior High Basketball Team '54, '55, '56;
Track Team '53, '54, '55; Spike Shoe Relay '54; Regional Track Meet '54;
Owensboro Invitational Tournament '53; Senior High Pep Club '53, '54, '55,
'56; Student Government '53, '54, '55, '56; Senior Play Cast '56; Prom Court
'55, '56; Y-Teen Prom Court '56; Chemistry Day Participant '56; Glee Club
'56; Masque and Gavel Talent Show '54, '55.

"I've taken my fun where I've found it."

RUTH ELIZABETH CLARK

"Liz"

Entered from Elementary
Glee Club '53, '54, '55, '56; Pep Club '53, '54, '55, '56; Y-Teens '53, '54, '55;
State Speech Contest '53; Regional Speech Festival '55, '56; Vice-President
Junior High Student Government '53; Student Council '55; Crowell-Collier
Salesmanship Award '55; Masque and Gavel '55, Vice-President '56, Talent
Show '55, '56; Beta Club '55, Secretary '56; Beta Club Convention '56; U-Hi
Lights Staff '55, Production Manager '56; U-Hi Lights Personality Parade '56;
Senior Play Cast '56; Candidate for Good Citizenship Award '56; National
Honor Society '56.

"This above all: to thine own self be true,
And it must follow, as the night the day,
Thou canst not then be false to any man."

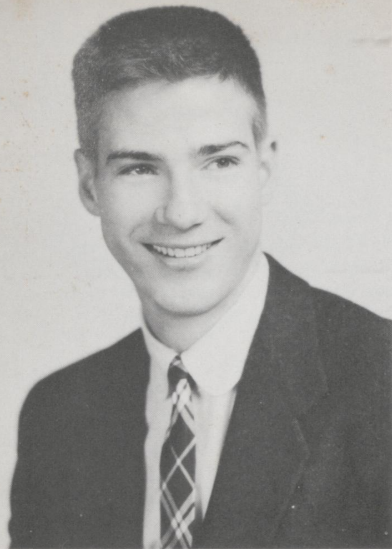


MARY BAILEY FITTS

"Mary B."

Entered from Morton '53
Beta Club '54, '55, '56; Glee Club '54, '55, Alto-Section Leader '56; Fall
Conference Chorus '56; All State Chorus '56; Y-Teens '54, Sergeant-at-Arms
'55, Secretary '56; Pep Club '54, '55, President '56; Social Committee '56;
U-Hi Lights Staff '54, Assistant Feature Editor '55, Feature Editor '56; Assis-
tant Feature Editor Annual Staff '56; Junior and Senior Prom Bid Committee
'55, '56; Speech Class Play '56; Masque and Gavel Talent Show '54, '55, '56;
Junior Prom Court '56.

"A merry heart maketh a cheerful countenance;
A merry heart doeth good like a medicine."



WILLIAM LESLIE GINGER
"Billy"

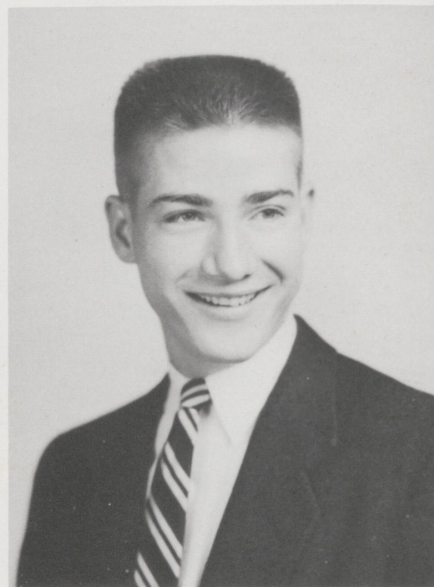
Entered from Elementary
Tennis Team '54, '55; Basketball Team '53, '54, '55, '56; Beta Club '54, '55,
'56; Pep Club '53, '54, '55, '56; Senior Play Cast '56.

"Great men are not always wise."

THOMAS LESLIE GINGER
"Tommy"

Entered from Elementary
Junior High Basketball Team '53; Senior High Basketball '54, '55, '56; Track
Team '53, '54, '55; Glee Club '55, '56; Boy's State '54; Central Kentucky
Chorus '54; Pep Club '53, '54, '55, '56; Senior Play Cast '56.

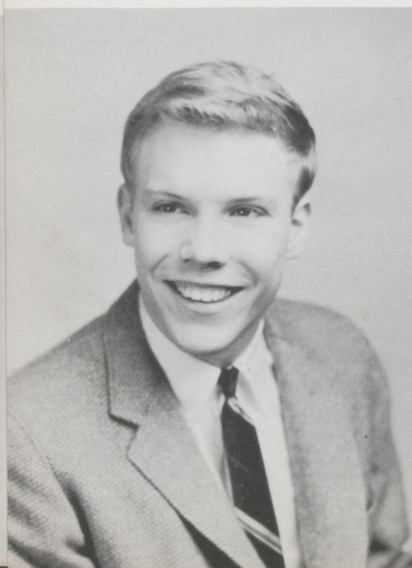
"I am escaped with the skin of my teeth."



JOSEPH WHITEHOUSE HAGIN
"Joe"

Entered from Elementary
Senior Play Cast '56; Vice-President Class '53; President Class '54, '55; Pep
Club '53, '54, '55, '56; Glee Club '53, '54; Student Council '52, Vice-Pres-
ident '56; Student Government '55, President '56; U-Hi Lights Staff '56;
Annual Staff '56; Beta Club '55, '56; Beta Club Convention '56; Boys' State
Nominee '55; Prom Court '55; Crowell-Collier Salesmanship Award '55; King
Y-Teen Prom Court '54; Basketball Team '53, '54, '55, '56; Owensboro In-
vitational Tournament '54; Swimming Team '53, Co-Captain '54; Track
Team '53; State Track Meet '54; Spike Shoe Relay Team '54.

"A jest breaks no bones."





BARBARA GAYLE HARPER
"Barbara"

Entered from Elementary
Pep Club '53, '54, '55, '56; Glee Club '53, '54, '55, '56; Little Choir '55, Secretary-Treasurer '56; State Music Festival '55, '56; Cheerleader '53, '54, '56; Y-Teens '53, '54, '55, President '56; Captain Y-Teens Basketball Team '54; Y-Teens Summer Conference '54, '55; Student Government '53, '55, Secretary-Treasurer '56; U-Hi Lights Staff '55, '56; Beta Club '54, '55, '56; Crowell-Collier Salesmanship Award '55; Masque and Gavel Talent Show '53, '54, '55; Speech Class Play '55; Prom Court '55, '56; Pep Club Award '54; Flame Queen Candidate '54; Senior Play Cast '56; Social Committee '53; Double Trio '56.

"Life is not life at all without delight."

LEE WARLEY HARPER
"Warley"

Entered from Elementary
Tennis Team '53, '54; Basketball Team '53, '54, '55, '56; Convocation Committee '54; Social Committee '53; Prom Court '55; Senior Play Cast '56; Pep Club '53, '54, '55, '56; Beta Club '56; Band '53.

"I have laid aside business and gone fishing."



ELIZABETH McCLURE HAYS
"Betty"

Entered from Morton '54
Glee Club '54, '55, '56; Little Choir '54, '55, President '56; Double Trio '56; Central Kentucky Chorus '55; Pep Club '54, '55, '56; Y-Teens '54, '55, Song Leader '56; Beta Club '55, '56; Beta Club Convention '56; U-Hi Lights Staff '54, Art Editor '55, Lay-Out Editor '56; Co-Art Department Annual Staff '56; Senior Play Cast '56; Speech Class Play '55; Masque and Gavel Talent Show '54, '56; Honorable Mention '55; Convocation Committee '56; State Music Festival '54, '55, '56; Regional Speech Festival '55; All State Orchestra '54, '55; Crowell-Collier Salesmanship Award '55; Prom Court '56.

"O Music's sphere-descended maid, Friend of Pleasure, Wisdom's aid!"





BARBARA HYMSON
"Hympie"

Entered from Elementary
Senior Play Cast '56; Masque and Gavel '54, '55, '56, Talent Show '56, First Place '53, Second Place '54; Glee Club '53; Y-Teens '53; Pep Club '55, '56; Regional Speech Festival '53, '54; State Speech Festival '55, '56; I Speak For Democracy Contest County Winner '54, '55; Cancer Speech Contest '54, '55; U-Hi Lights Make-Up Editor '55, Assistant Editor '56; Cheerleader '53; Beta Club '55, Treasurer '56; Crowell-Collier Salesmanship Award '55; Annual Staff '56; Band '53.

"A star danced---under that was I born."

NANCY CARROLL MARR
"Nancy"

Entered from Morton '52
Glee Club '53, '54, '55, '56; Pep Club '54, '55, '56; Y-Teens '53, '54, '55, '56; Class Treasurer '54; Prom Court '55, '56; Speech Class Play '55; Masque and Gavel Talent Show '55, '56; U-Hi Lights Assistant Feature Editor '56.

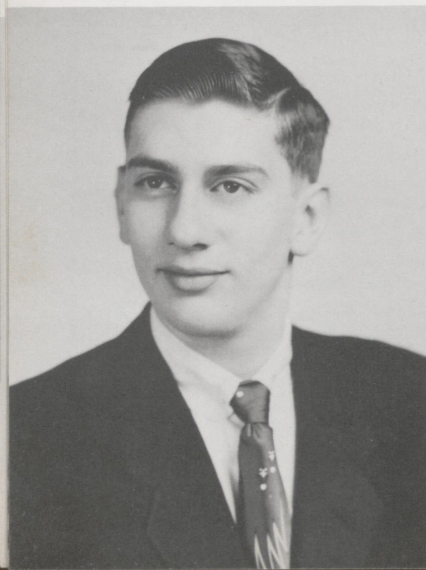
"Silence is the perfectest herald of joy."

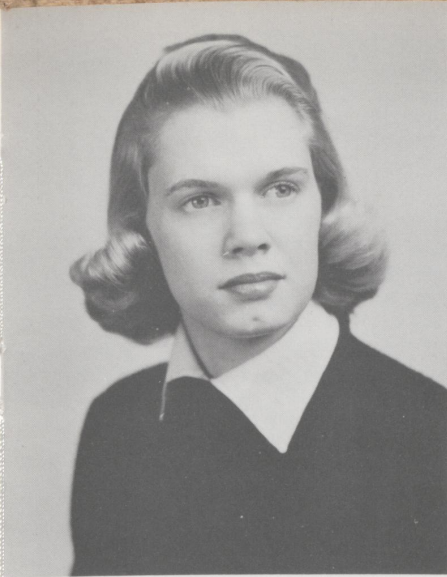


WILSON RUSH MATHEWS, JR.
"Rush"

Entered from Morton '53
Pep Club '51, '52; Senior Play '56; Annual Staff '56; Crowell-Collier Salesmanship Award '55; Chemistry Day '56.

"He is well paid that is well satisfied."





MARY LLOYD MEADE
"Vess"

Entered from Christ the King '53
Y-Teens '53, '54, '55, '56; Y-Teen Basketball Team '53; Glee Club '53, '54, '55, '56; Little Choir '56; All State Chorus '56; Senior Play Cast '56; Pep Club '54, '55, '56; U-Hi Lights Staff '56.

"Good health and good sense are two of life's greatest blessings."

LOIS MERIWETHER
"Lois"

Entered from Elementary
Glee Club '53, '54, '55, Secretary '56; Little Choir '54, '55, Secretary '56; Girl's Double Trio '54, '55, '56; Girl's Quartet '54; Mixed Singing Group '54; State Music Festival '54, '55, '56; All State Chorus '56; Speech Class Play '55; Senior Play Cast '56; Masque and Gavel Talent Show '54, '55, '56; Crowell-Collier Salesmanship Award '55; U-Hi Lights Staff '54, '56, Assistant News Editor '55; Class Secretary '53; Y-Teens '53, '54, '55, '56; Pep Club '53, '54, '55, '56; Secretary-Treasurer Student Council '56; Prom Court '56.

"Music is well said to be the speech of angels."

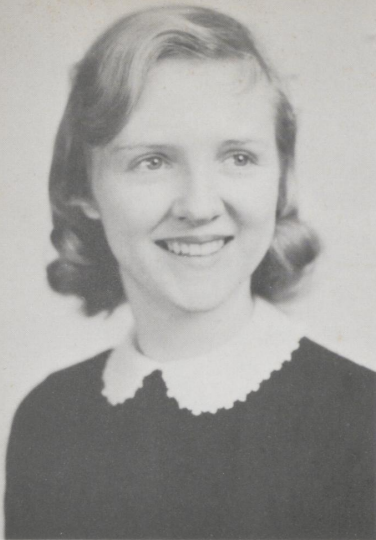


ROBERT STEPHEN MILLER
"Bob"

Entered from Kenwick '51
Band '53; State Music Festival '53; Glee Club '53, '54, '55, Bass Section Leader '56; All State Chorus '53; Student Government '54; Class Vice-President '53; Pep Club '54, '55, '56, Treasurer '53; Junior High Basketball Team '53; Senior High Basketball Team '54, '55; Tennis Team '53, '54; Freshman Tennis Singles Champion '53; U-Hi Lights Staff '53, '54, Sports Editor '55, Assistant Sports Editor '56; Annual Staff '55, Circulation Manager '56; Student Council '55; National Honor Society '55, '56; National Beta Club '55, '56; Beta Club Convention '56; Masque and Gavel '54, '55, President '56, Talent Show '54, Chairman '55, Master of Ceremonies '55, '56; Boy's State Nominee '55; Class President '56; Crowell-Collier Salesmanship Award '55; Regional Speech Festival '53, '54; Cancer Speech Contest '54; Senior Play Cast '56; Prom Court '55, '56; Participant Chemistry Day '56; Merit Scholarship Contestant, Semi-Finalist, Merit Scholar '56.

"..... And Thy youth shall see visions."





SARAH ANNE MILWARD

"Sarah"

Entered from Wilmington, North Carolina, '55
Glee Club '55, Sectional Leader '56; All State Chorus '56; Central Kentucky
Chorus '55; Little Choir '56; Y-Teens '55, '56; Senior Play Cast '56; Masque
and Gavel Talent Show '55, '56; U-Hi Lights Staff '56; Beta Club '56; State
Music Festival '56.

"The path of the just is as the shining light, that shineth more and more unto
the perfect day."

CAROLYN ANN MOORE

"Carolyn"

Entered from Morton '51
Pep Club '53, '54, '55, Vice-President '56; Glee Club '53, '54, '55, '56; Little
Choir '55, '56; Y-Teens '53, '54, '55, Vice-President '56; Y-Teens Basketball
'54, '56; State Music Festival '55, '56; All State Chorus '56; Annual Staff '56;
U-Hi Lights Staff '56; Crowell-Collier Salesmanship Award '55; Participant
Home Economics Day '56.

"The best of healers is good cheer."



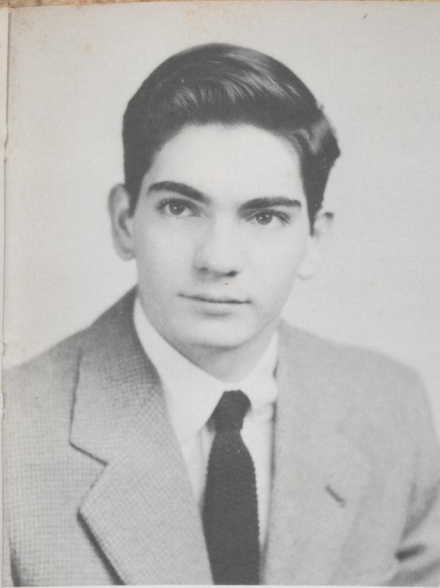
CAROLINE KNIGHT REEVES

"Caroline"

Entered from Elementary
Pep Club '53, '54, '55, '56; Glee Club '53; National Honor Society '56; Y-Teens
'53, '54, '55, '56; U-High Lights Photographer '56; Annual Staff '56; Senior
Play Cast '56; Crowell-Collier Salesmanship Award '55; Participant National
Honor Scholarship Tests '56.

"I do not understand; I pause; I examine."





THOMAS SEARS RICH

"Richileu"

Entered from Hebrion '47
Junior Basketball Team '53; Senior Basketball Team '54, '55; Track Team '54, '55, Captain '56; Swimming Team '54; State Swimming Meet '54; Student Council '53, '54, President '56; Social Committee '54; Vice-President Class '56; Beta Club '56; Senior Play Cast '56; Pep Club '53, '54, '55, '56; Glee Club '53, '54, '55; Band '53; All State Band '53; German Band '53; State Music Festival '53; Octet '53; Annual Staff '56; Masque and Gavel Talent Show '54.

"The lad was over a rover, loving and laughing and free."

PRISCILLA BEVERLY ROBERTS

"Prissy"

Entered from Elementary
Pep Club '53, '54, '55, '56; Glee Club '53, '54, '55; Class Secretary '54; Student Government '56; Y-Teens '53, '54, '55, '56; Y-Teens Basketball '53; U-Hi Lights Staff '56; Art Editor Annual Staff '56; Masque and Gavel Talent Show '55, '56.

"As the sun colors flowers, so does art color life."

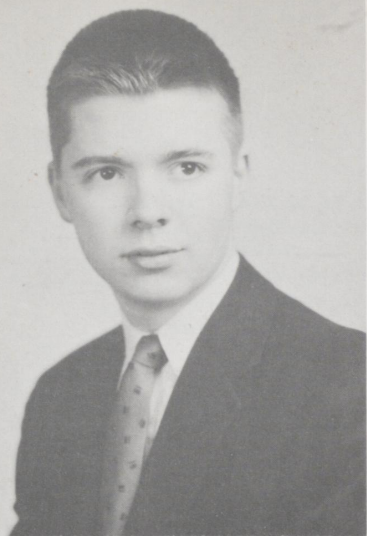


MAYE MARSHALL ROSE

"Bow Wow"

Entered from Christ the King '54
Pep Club '54, '55, Secretary '56; Vice-President Class '55; Y-Teens '54, '55, '56; Glee Club '54, '55, '56; Little Choir '56; Regional Speech Festival '55, '56; U-Hi Lights Staff '56; Annual Staff '56; Speech Class Play '56; Senior Play '56; Beta Club '56; Masque and Gavel '56; Music Committee '56.

"A word fitly spoken is like apples of gold in pictures of silver."



WILLIAM GEORGE SPRAGUE
"Uncle Benjamin"

Entered from Elementary
Beta Club '55, '56; Masque and Gavel '55, Talent Show Chairman '56, Talent Show '56; Glee Club '55, President '56; Manager Basketball Team '56; Senior Play Cast '56; Junior Class President '56; Lay Out Editor Annual Staff '56; Pep Club '53, '54, '55, '56; Boy's Double Quartet '56; All State Chorus '56; Student Council '55; State Speech Festival '55, '56; Prom Court '56; Crowell-Collier Salesmanship Award '56; Band Librarian '53; National High School Speech Award '56.

"It is better to wear out than to rust out."

VIRGINIA PAUL CHAPIN VAN METER
"Veeps"

Entered from Elementary
Pep Club '53, '54, '55, '56; Cheerleader '53, '56; Glee Club '53, '54, '55, '56; Y-Teens '53, '54, '55, Treasurer '56; Student Government '53, Vice-President '56; Social Committee '55; Beta Club '54, '55, '56; Beta Club Convention '55; Crowell-Collier Salesmanship Award '55; Masque and Gavel Talent Show '54, '55, '56; Speech Class Play '55; Regional Speech Festival '55, '56; Senior Play Cast '56; U-Hi Lights Staff '53, '54, Production Manager '55, Exchange Editor '56; Advertising Manager Annual Staff '56.

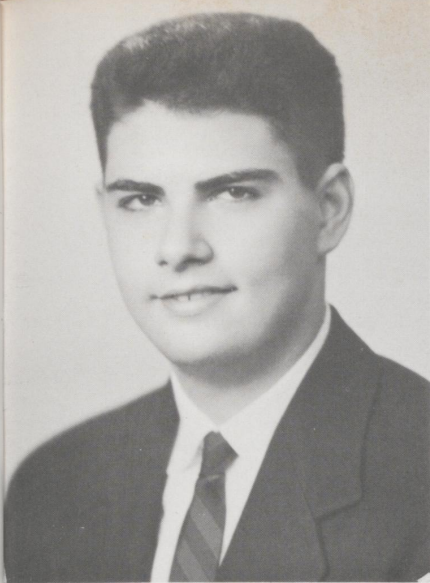
"Those who bring sunshine into the life of others, cannot keep it from themselves."



SAM CLAY WARD
"Sambo"

Entered from Elementary
Basketball Team '53, '54, '55, '56; Track Team '53, '54, '55; Tennis Team '55; Glee Club '55, '56; Pep Club '53, '54, '55, '56; Senior Play Cast '56; Prom Court '56; King Y-Teen Prom Court '56.

"The most essential thing in life for happiness is the gift of friendship."



DUDLEY OTIS WILLIAMS JR.
"Duddums"

Entered from Elementary
President Beta Club '56; Assistant Editor Annual Staff '56; Student Council '56; Senior Play Cast and Stage Manager '56; Boy's State '55; "B" Team Basketball '54; Manager Basketball Team '55; Class Treasurer '55; Band '53; Pep Club '54, '55, '56; Masque and Gavel '56; Talent Show '55, '56; Regional Speech Festival '56.

"The difficult is done immediately, the impossible takes a little longer."

LINDA THOMAS WILLIAMS
"Lin"

Entered from Elementary
Glee Club '53, '54, '55, '56; Little Choir '56; All-State Chorus '56; Central Kentucky Chorus '56; U-Hi Lights Staff '55; Assistant News Editor '56; Y-Teens '53, '54, '55, '56; Y-Teen Basketball Team '53; Pep Club '53, '54, '55, '56; Music Festival '56; Music Award '56; Chairman Ticket Committee Senior Play '56.

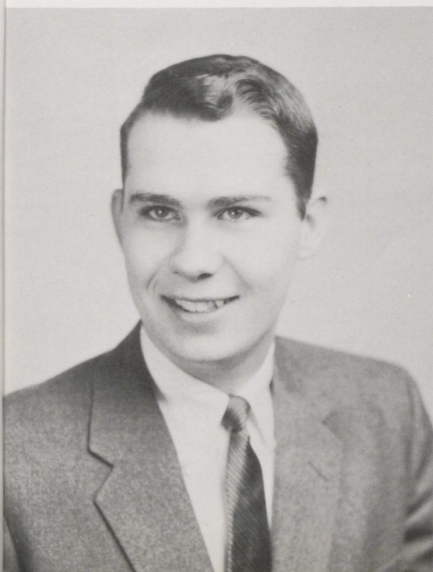
"What wisdom can you find that is greater than kindness?"



JAMES HARRISON WITHROW
"Jimmy"

Entered from Elementary
Pep Club '53, '55, Treasurer '56; Senior Play Cast '56; Convocation Committee '56; Reader Christmas Program '56; Beta Club '56; Speech Class Play '56; Crowell-Collier Salesmanship Award '56; Talent Show Crew '54, '55.

"Tomorrow, friends, will be another day!"





BETSY DEE WRIGHT

"Betsy"

Entered from Versailles High School '54
Band '54, '55, Secretary '56; Glee Club '55, '56; Little Choir '56; Regional
Music Festival '54; State Music Festival '55; All State Band '55; All State
Chorus '56; Pep Club '54, '55, '56; U-Hi Lights Staff '56; Masque and Gavel
Talent Show '56; Regional Chorus '56.

"I had a pleasant time with my mind, for it was happy."

HANNAH HARGETT HAGIN

"Hannah"

Entered from Elementary
Pep Club '54, '55, Vice-President '53; U-Hi Lights '53, '54; Y-Teens '53, '54,
'55; Y-Teen Basketball '53, '54; Inter-Club Council '54; Glee Club '53, '54,
'55; Little Choir '54, '55; Double Trio '55; Beta Club '54, '55; Beta Club Con-
vention '54; Cheerleader '55; Vice-President Class '53, '54, '55; Prom Court '55.

"A soft answer turneth away wrath."



Underclassmen

"Hail, blooming youth! May
all your virtues with your years
improve."



FRONT ROW, LEFT TO RIGHT: Nancy Harding, Treasurer; Bill Sprague, President; Bobby Griffin, Vice-President; Anne Armstrong, Secretary. SECOND ROW, LEFT TO RIGHT: Jayne Bishop, Lib Briscoe, Nancy Davis, Martha Marr, Mary Lynne Davis, Marshall Rose. THIRD ROW, LEFT TO RIGHT: Margaret Biggs, Julie Hessel, Lynne Bryant, Molly Phelps, Carolyn Stroud, Betty Logan Lehman. BACK ROW, LEFT TO RIGHT: Betty Maxson, Billy Alexander, Jim Brakefield, John Melzer, Bob Pinson.

1956
JUNIOR PROM COURT

| | |
|-----------------|-----------------|
| Nancy Brown | W. R. Brown |
| Mary B. Fitts | Bobby Miller |
| Barbara Harper | Tommy Rich |
| Betty Hays | Sam Ward |
| Nancy Marr | Jimmy Withrow |
| Lois Meriwether | Billy Alexander |
| Jay Bishop | Jim Brakefield |
| Lynne Bryant | Bobby Griffin |
| Nancy Harding | John Melzer |
| Martha Marr | Bob Pinson |
| Betty Maxson | |

• Bill Sprague
• The President of the Junior Class is, by tradition, the Queen's Escort.

NOBREAKS

1. Because of You
2. September Song
3. A Foggy Day

JUNIOR SPECIAL

4. Blue Moon
5. Unchained Melody
6. Love Is A Many Splendored Thing

Good Night Medley
Music by BILL SMITH



Sophomore Class



FRONT ROW, LEFT TO RIGHT: Lucy Manley, Treasurer; Bill Taylor, President; Virginia Prewett, Vice-President; Gerda Sanders, Secretary. SECOND ROW, LEFT TO RIGHT: Helen Hamilton, Shelia Hargett, Jeannie Robinson, Pegsie Lisle, Lady Greenslit, Mary Anderson, Betty Evans, Rae Reed. THIRD ROW, LEFT TO RIGHT: John Howard Williams, Perry Patterson, Willie Newbury, Lindsay Nunn, Ann Rodgers Martin, Malinda Clay, Pat Boyd, Lucy Milward, Bradley Switzer. BACK ROW, LEFT TO RIGHT: Lany Cox, Ernie Clarke, Charley Turnbull, Herky Rupp, Allen Tolman, John Pollard, Chuck Maxson, John O'Dear.

Freshman Class



FRONT ROW, LEFT TO RIGHT: William Wenneker, Treasurer; Mitchell Gail, President; Tay Maxson, Vice-President; Betty Burnett, Secretary. SECOND ROW, LEFT TO RIGHT: Freda Miller, Charlotte Adams, John Crawford, Ruth Gaitskill, Joe Curry, Linda Lutes, Dudley Milward, Susan Steele. THIRD ROW, LEFT TO RIGHT: Ann Chamberlain, Helen Warren, Kitty Craig, Tommy Adams, Bethania Smith, Wayne Haffler, Elsie Barr, Dottie Davis. BACK ROW, LEFT TO RIGHT: Boo Weinman, Jamie Moore, Billy Jo Wright, Beckner Worth, Bob Sprague, Jimmie Cowden, Bill Combs, Phil Powell. ABSENT WHEN THE PICTURE WAS TAKEN: John Kaltenbrun, Mary Elizabeth Wylie.

Eighth Grade



FRONT ROW, LEFT TO RIGHT: Len Cox, Judy Gross, Web Cowden, Mary Duncan, Bill Harper, Betty Brown, Suzanne Griffin, Bunny Hartford, Dickie Chamberlain. MIDDLE ROW, LEFT TO RIGHT: Bobby Reeves, Linda Wheeler, Dill Marr, Carolyn Stivers, Jeanie Shaver, Rufus Lisle, Louise Pryor, Mary F. Moore, Winnie Maurser, Johnny Hobbs. BACK ROW: Carolyn Mansfield, Nancy Cowden, Don Paris, Clay Brock, Jack Russell, Robbie Sanders, Johnnie Cole, Lionel Moore, Jimmie Farra, Libby Lou Honerkamp. ABSENT: Jeannie Rich.

Seventh Grade



FRONT ROW, LEFT TO RIGHT: Roy Bachmeyer, Burton Milward, Frank Dickey, Jack Ireland, Coley Callaway, Jimmie Coolson, Melinda Stivers, Betty Newbury, Ellen Clark, Adrain Wilkes. MIDDLE ROW: Sharon Cornish, Susanne Phelps, Libby Lloyd, Elaine Irtz, Lee DeJoe, Lynne Barrett, Susan Hamilton, Pat Smith, Mike Cox, Sarah Gaitskill. BACK ROW: Sam Warren, William Wood, Barbara Fauconer, Betsy Gillis, Jessica Paris, Joe Goodwin, Clifton Eaton, Robert Pattie, Glenn Shepherd. ABSENT: Gerard Gerhard.

Activities

" Honor is not won,
until some honorable deed be done."

Annual Staff



ANNUAL STAFF

- Editor Nancy Brown
- Assistant Editor Dudley Williams
- Layout Editor Bill Sprague
- Assistant Layout Editor . . . Barbara Hymson
Rush Mathews
- Business Manager Elizabeth Clark
- Circulation Editor Bob Miller
- Feature Editor Dobree Adams
- Assistant Feature Editor . . . Mary B. Fitts
- Advertising Manager . Virginia Paul Van Meter
- Photographic Editor Joe Hagin
- Assistant Photo Editor Caroline Reeves
- Sports Editors Tom Rich
W.R. Brown
- Typists Anne Armstrong
Maye Marshall Rose
Carolyn Moore
- Proofreader Anne Armstrong



U-Hi Lights



FRONT ROW, LEFT TO RIGHT: Linda Williams, Elizabeth Clark, Caroline Reeves, Dobree Adams, Mary Bailey Fitts, Marshall Rose, Barbara Harper. BACK ROW, LEFT TO RIGHT: Bob Miller, Sarah Ann Milward, V. P. Van Meter, Caroline Moore, Nancy Marr, Kitty Craig, Betty Hays, Tommy Adams. ABSENT: Anne Armstrong.

U-HI LIGHTS STAFF

| | |
|-------------------------------------|--|
| Editor | Dobree Adams |
| Assistant Editor | Barbara Hymson |
| Production Manager | Elizabeth Clark |
| News Editor | Mary Dan Mathews |
| Assistant News Editor | Linda Williams |
| Feature Editor | Mary Bailey Fitts |
| Assistant Feature Editor | Nancy Marr |
| Make-Up Editor | Betty Hays |
| Assistant Make-Up Editor | Sarah Anne Milward |
| Art Editor | Barbara Harper |
| Assistant Art Editor | Priscilla Roberts |
| Exchange Editor | Virginia Paul Van Meter |
| Sports Editor | Joe Hagin |
| Assistant Sports Editor | Bob Miller |
| Junior High Editor | Kitty Craig |
| Junior High Sports Editor | Tommy Adams |
| Photographer | Caroline Reeves |
| Typists | Anne Armstrong, Marshall Rose, Carolyn Moore |



Reporters

Student Council



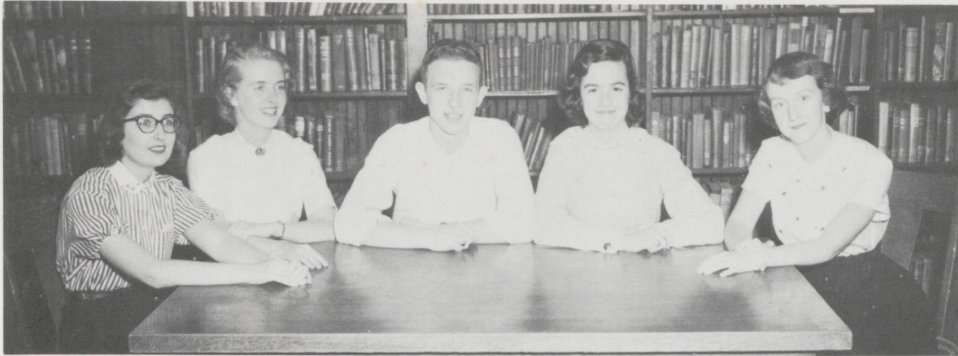
The Student Council is the policy forming body of the school. With the help of the faculty, the Student Council makes the laws of the school. Each class has two permanent representatives to the council. The representatives from each class are: FRONT ROW, LEFT TO RIGHT: Jean Shaver, 8th grade; Jessica Paris, 7th grade; Lois Meriwether, Secretary; Tom Rich, President; Joe Hagin, Vice-President; Betty Evans, 10th grade. BACK ROW, LEFT TO RIGHT: Jimmie Coolsen, 7th grade; Tay Maxson, 9th grade; Johnny Hobbs, 8th grade; Lynne Bryant, 11th grade; Dudley Williams, 12th grade; Jim Brakefield, 11th grade; Phil Powell, 9th grade; Lanny Cox, 10th grade; Nancy Brown, 12th grade.

Senior High Student Government



The Student Government, which is composed of the entire student body, is responsible for the enforcement of school laws and policies. The Senior High Student Government Court was made up of: FRONT ROW, LEFT TO RIGHT: Virginia Paul VanMeter, Vice-President; Joe Hagin, President; Barbara Harper, Secretary-Treasurer. BACK ROW, LEFT TO RIGHT: Betty Maxson, 11th grade representative; Anne Rogers Martin, 10th grade representative; W.R. Brown, 12th grade representative; John Melzer, 11th grade representative; Priscilla Roberts, 12th grade representative.

National Honor Society



LEFT TO RIGHT: Nancy Brown, Elizabeth Clark, Bob Miller, Dobree Adams, Caroline Reeves.

National Merit Scholarship Contestants



Dobree Adams and Bob Miller

National Beta Club



FRONT ROW, LEFT TO RIGHT: Nancy Brown, Nancy Harding, Julie Hessel, Betty Maxson, Barbara Harper, Marshall Rose, Mary B. Fitts. SECOND ROW, LEFT TO RIGHT: Sarah Anne Milward, V. P. VanMeter, Dudley Williams, Betty Hays, Dobree Adams, Elizabeth Clark. BACK ROW, LEFT TO RIGHT: Tom Rich, Bob Miller, Joe Hagin, Warley Harper, Bill Sprague, Tom Ginger.

Y-Teens In Action



INNER-CLUB COUNCIL

FRONT ROW, LEFT TO RIGHT: Mary B. Fitts, Dobree Adams, President; Nancy Harding. BACK ROW, LEFT TO RIGHT: Sheila Hargett, Barbara Harper, Lucy Milward, Lindsay Nunn, Betty Hays, V.P. VanMeter, Carolyn Moore.

For the Y-Teens the year 1955-56 was the best ever. In the fall the club centered its energies on a scrap book to send to the teenagers of Hong Kong. At Thanksgiving they organized a "scavenger hunt" to collect food for the needy. The last project of 1955 was a Christmas party for the crippled children at the Good Samaritan Hospital. To help the New Year along, the Y-Teens participated in the annual cancer drive. They sold "peanuts for polio" and broke their previous record in sales.

Never before have the Y-Teens won both the swimming and basketball tournaments, but in 1956 they did.

Dobree Adams of the U-Hi Y-Teens was elected President of the Inner-Club Council, the organization for Y-Teen officers from Lafayette, Henry Clay, and University High.

The high light of their activities was the "Leap Year" Dance. A court was chosen and Sam Ward was crowned "Sugar-Plum" King. Phil Harding and his "Combo" furnished the music.



Y-TEEN SWIMMING TEAM

FRONT ROW: Jayne Bishop. SECOND ROW: Perry Patterson, Julie Hessel, Mary Lynne Davis. BACK ROW: Rae Reed, Dobree Adams, Lucy Milward.



Y-TEEN BASKETBALL TEAM

FRONT ROW, LEFT TO RIGHT: Betty Hays, Barbara Harper, Mary Lynne Davis, Lucy Milward, Lady Greenslit, Sheila Hargett. SECOND ROW, LEFT TO RIGHT: Elsie Barr, Nancy Harding, "Puddin" Newbury, Lib Briscoe, Julie Hessel. BACK ROW, LEFT TO RIGHT: Perry Patterson, Mary Anderson, Dobree Adams, Lindsay Nunn, Carolyn Moore.

Y-Teens



Junior High Student Government



FRONT ROW, LEFT TO RIGHT: Tommy Adams, Vice-President; Elsie Barr, President; Kitty Craig, Secretary-Treasurer. SECOND ROW, LEFT TO RIGHT: Betty Brown and Clay Brock, 8th Grade Representatives; Betsy Gillis and Frank Dickey, Jr. 7th Grade Representatives. ABSENT: Charlotte Adams, 9th Grade Representative.

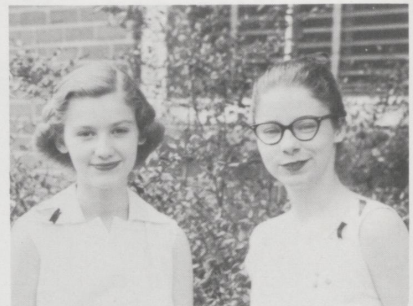
Honors



NATIONAL BETA CLUB initiates were, LEFT TO RIGHT: Priscilla Roberts, Betty Logan Lehman, Anne Armstrong, Lindsay Nunn. BACK ROW: Lanny Cox, Rush Matthews.



Also receiving honors were, FROM LEFT: Nancy Brown, The Marguerite McLaughlin Certificate and the D.A.R. Good Citizenship Award; Bill Sprague, the National High School Speech Award; Betty Hays, French Certificate of Honor; Rush Matthews, Beta Club.



Initiated into the NATIONAL HONOR SOCIETY were: Betty Logan Lehman (left), and Anne Armstrong.

Day



Others receiving honors and scholarships, FROM LEFT: Anne Armstrong and Betty Logan Lehman, National Honor Society; Dobre Adams, Enoch Grehan Memorial Certificate, and Eta Sigma Phi Latin Award; Elizabeth Clark, Agnes Scott Scholarship; Virginia Paul VanMeter, Transylvania Scholarship; Robert Miller, National Merit Scholarship.



Candidates for BOYS STATE were, FROM LEFT: Allen Tolman, Billy Alexander, Herky Rupp, Lanny Cox and Ernie Clarke.



Initiated into NATIONAL MASQUE AND GAVEL were, FROM LEFT: Mitchell Gail, Lindsay Nunn and Freda Grace Miller.

Senior High Pep Club



OFFICERS: President, Mary Bailey Fitts; Vice-President, Carolyn Moore; Secretary, Maye Marshall Rose; Treasurer, Jimmy Withrow.

Junior High Pep Club



OFFICERS: President, Bill Combs; Vice-President, Dorothy Davis; Secretary, Jeanne Rich; Treasurer, Bethania Smith; Sergeant-at-Arms, William Wenneker.

Convocation Committee



LEFT TO RIGHT: Jayne Bishop, Jimmy Withrow, Len Cox, John Pollard, Julie Hessel, Betty Hays, Jamie Moore, Suzanne Phelps, William Wood, and Rae Reed.

Social Committee

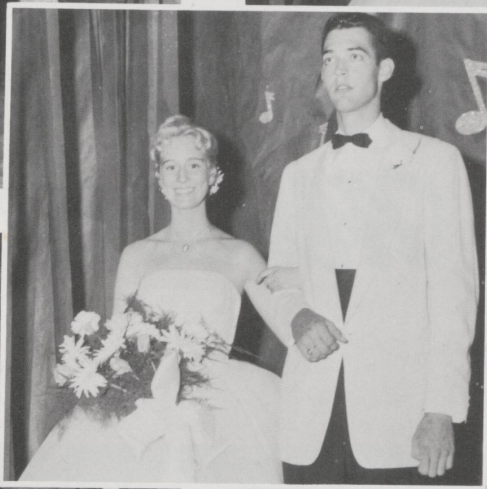


LEFT TO RIGHT: Warley Harper, Margaret Biggs, Mary Bailey Fitts, Martha Marr, and Chuck Maxson.



*The
Junior
Prom
1956*

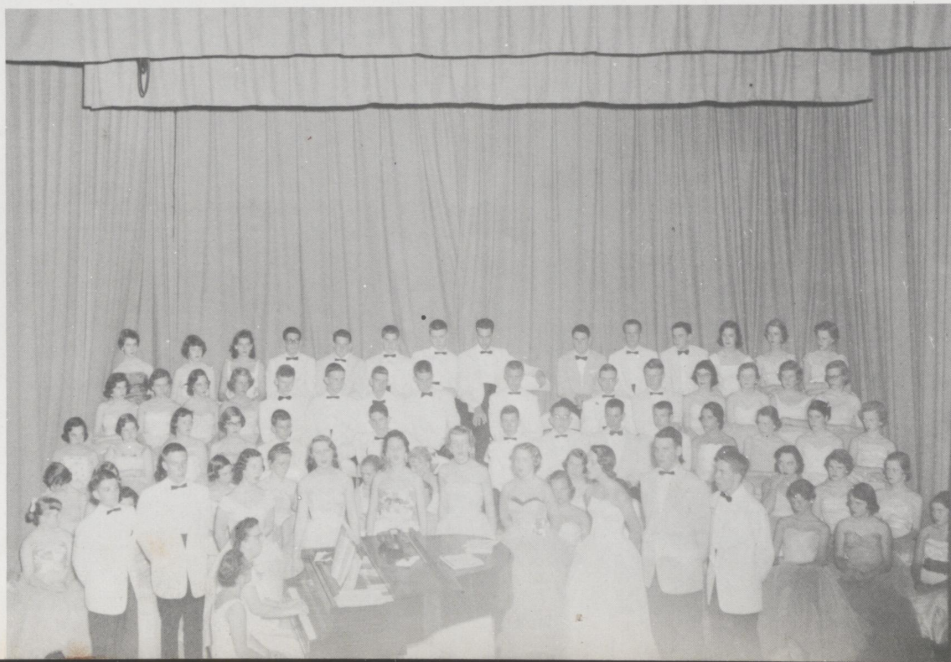
The Queen, Lois Meriwether, is crowned
by Junior Class President Bill Sprague.



ned
ue.



Musical

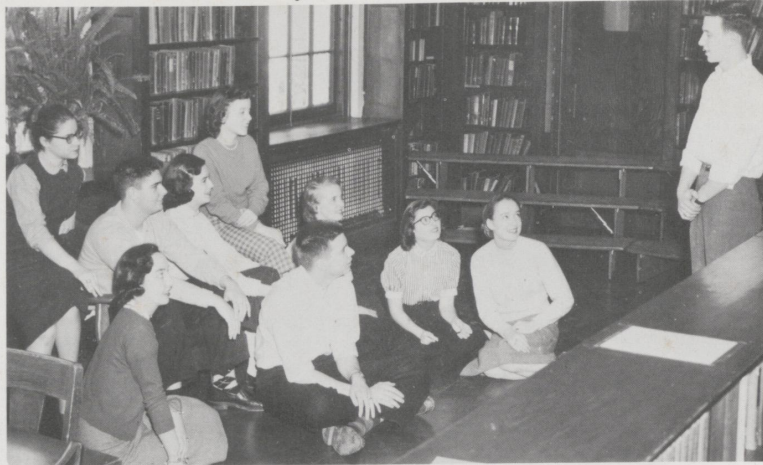




Masters



Masque & Gavel



MEMBERS: Anne Armstrong, Carolyn Stroud, Bill Sprague, Dudley Williams, Dobre Adams, Marshall Rose, Elizabeth Clark, Nancy Brown, Julie Hessel, Bob Miller (Standing), Elizabeth Clark, Anne Armstrong.



BOB PINSON

The Masque and Gavel Talent Show was a huge success. The winners were: First Place, a dance team composed of Malinda Stivers and Betty Newbury; Second Place, a piano solo by Bob Pinson.



DANCE TEAM

Speech Class Play



LEFT TO RIGHT: Mary B. Fitts, Marshall Rose, Jimmy Withrow, Bill Sprague, Martha Marr.

Senior Play



Love Is Eternal



Appreciation

During our high school careers, there have been many persons who have given freely of their time and talents to help us achieve our many and varied goals. It is the purpose of this page to recognize some of those persons and express to them the hearty appreciation of the Class of 1956.

To Dr. Cierley, the Class of '56 owes a debt which can never be repaid. His patience and cooperation were essential to the success of the year, and more particularly, of our Senior Play. He has inspired us to fulfil our high school aims.

The faculty certainly gave of their best to us. We feel prepared for whatever the future may bring. We recall the tolerance and understanding of our four class sponsors: Miss Peck, during this, our final year; Mr. McMurtry, through a memorable Junior year; and Miss West and Miss Anderson, through our preparatory Sophomore and Freshman years.

One name which will stand out in our recollection of our high school days will be that of Mrs. Sherman Miller, known to most of us as just "Fannie." The help she has given, not only in events concerning drama and speech, but classroom teaching, has certainly been appreciated.

Throughout the year the Senior Class has received aid from two Sophomore boys. We would, therefore, like to bestow upon them the title, "honorary Senior." Lanny Cox and Ernest Clarke gave much indispensable service during two of the major efforts of the year, our play, and the Christmas Dance.

The Senior Class would also like to extend its thanks to Mrs. Howard Lusk and Mrs. William Wheeler, our able office staff. They have helped us a great deal during the year, answering our innumerable and often repetitious questions. They have gone far "beyond the call of duty" and their services have been greatly appreciated.

To all these, and to the many others, the Class of '56 expresses its most grateful appreciation for the time and effort spent for us. Without them much which we have done would have been left undone. We shall always remember them--with thanks.

Sports

"When the one great Scorer comes
to write against your name,
He writes not if you won or lost,
but how you played the game."

Cheerleaders

Barbara Harper



Julie Hessel



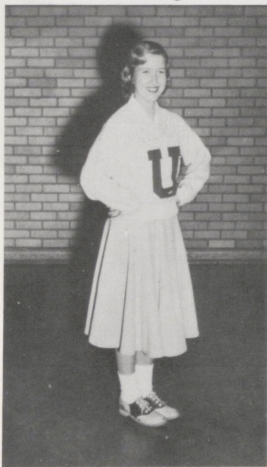
Virginia Paul Van Meter



Mary Lynn Davis



Shelia Hargett



Nancy Harding



Lady Greenslit

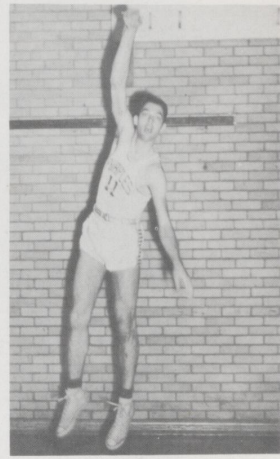


Mainstays

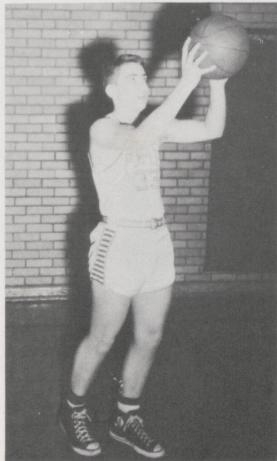
Warley Harper



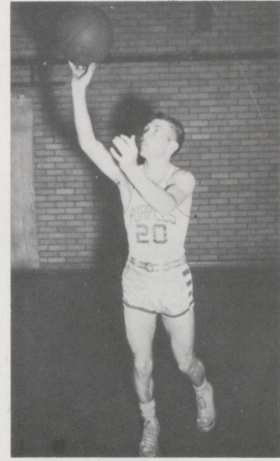
W.R. Brown



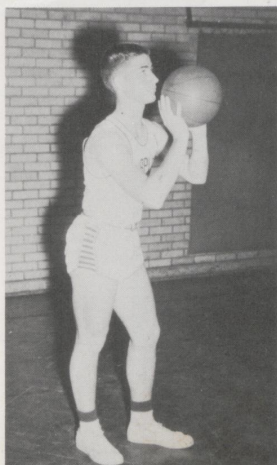
Lanny Cox



Sam Clay Ward



Tommy Ginger



Bill Sprague-Manager



Joe Hagin



Senior High Basketball Team



FRONT ROW, LEFT TO RIGHT: Manager, John Odear, Jim Brakefield, Bill Taylor, Lanny Cox, Sam Clay Ward, Bradley Switzer, Stuart Swartz, and John Howard Williams. BACK ROW, LEFT TO RIGHT: Manager, John Kaltenbrun, Ernie Clark, Billy Ginger, W.R. Brown, Warley Harper, Tommy Ginger, and Chuck Maxson.

Tennis Team



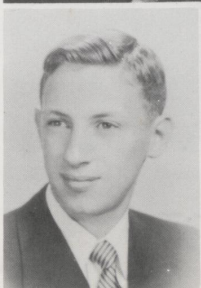
FRONT ROW, LEFT TO RIGHT: Web Cowden, Johnny Hobbs, Rufus Lisle, Len Cox, Adrian Wilkes. MIDDLE ROW, LEFT TO RIGHT: Jimmy Farra, Wayne Haffler, John Howard Williams, Sam Clay Ward, Lionel Moore and Mike Cox. BACK ROW, LEFT TO RIGHT: Bradley Switzer, Lanny Cox, Ernie Clark, Bob Sprague, Tom Ginger, Bill Ginger.

Track Team



FRONT ROW, LEFT TO RIGHT: Wayne Haffler, William Wood, Don Paris, Johnny Cole, Bobby Reeves, Burton Milward. SECOND ROW, LEFT TO RIGHT: Jamie Moore, Phil Powell, Sam Ward, Bobby Griffin, Chuck Maxson, Bill Taylor. BACK ROW, LEFT TO RIGHT: Bill Combs, Jimmy Cowden, William Wenneker, W.R. Brown, Tom Rich, John Pollard, and Hooker Phillips, Coach.

Swimming Team



Under the able coaching of Jack "Itch" Miller, the U-High Swimming Team won the Class "B" State Swimming Championship for the second consecutive year. The team members are:

FRONT ROW, LEFT TO RIGHT: Mitchell Gail, Bill Combs, Bobby Reeves, Clay Brock, Johnny Cole. BACK ROW, LEFT TO RIGHT: Ernie Clark, William Wenneker, John Pollard, Bill Taylor.

Junior High Basketball Team



BOTTOM ROW, LEFT TO RIGHT: John Kaltenbrun, Manager; John Cole, William Wood, Webb Cowden, Don Paris, Tommy Adams, Manager. TOP ROW, LEFT TO RIGHT: Mitchell Gail, Phil Powell, Beckner Worth, Bob Sprague, William Wenneker, Bill Combs.

Junior High Cheerleaders



LEFT TO RIGHT: Freda Miller, Linda Lutes, Betty Burnett, Tay Maxson, Mary Elizabeth Wylie, Dottie Davis.

Senior Special

"We have been friends together
in sunshine and in shade."

History



The Class of '56 had its beginning when a group of thoroughly scrubbed faces assembled for the first time in the University High Kindergarten Room. Since that time, our history has been one of many successes. Depicted here are high points of the years that led up to this, our Senior year.

KINDERGARTEN

Sharing "experiences"

FIRST GRADE

Circus

SECOND GRADE

Trips to train and fire stations
"Three Billy Goats Gruff" Play

THIRD GRADE

Nancy's fight with Miss Wilson
"The Elephant Bell"

FOURTH GRADE

Daniel Boone Play
Trip to Harrodsburg
May Day Dance

First Grade Circus



Third Grade



Fourth Grade

Seventh Grade

FIFTH GRADE

Jenny Lind Play
Sir Francis Drake "movie"
Class Party at Pris's farm

SIXTH GRADE

Peter Pan Play
Christmas Program
Skywriter
Puppet Show
Horseshoe Club

SEVENTH GRADE

U.S.O. Program for Convocation and
Lincoln School

EIGHTH GRADE

"The Pampered Darling" Play
Trip to Natural Bridge

NINTH GRADE

First Annual
Freshman Hop

TENTH GRADE

"Moulin Rouge" Sophomore Dance

ELEVENTH GRADE

Record Magazine Sales
"Southern Plantation" Junior Prom

FORMER CLASS MEMBERS
SEVENTH THROUGH TWELFTH GRADES

Frank Barker
Tommy Green
Hunter Platt
Ranny Blount
Jimmy Blackerby
Flem Harrison

Phoebe Estes
Nancy Pennington
Missy LeBus
Peggy Nunn
Nancy Adams Wallace
Mary Dan Mathews



*Fifth and Sixth
Grade*



Seventh Grade



Junior Prom



*"The Age Of
Innocence"*

1. Tommy and Billy Ginger; 2. Dudley Williams; 3. Sarah Ann Milward; 4. Nancy Brown; 5. Warley Harper; 6. Bill Sprague; 7. W.R. Brown; 8. Mary B. Fitts; 9. Dobree Adams; 10. Barbara Harper; 11. Linda Williams; 12. Bob Miller; 13. Betty Hays; 14. Caroline Reeves; 15. Prissy Roberts; 16. Anne Armstrong; 17. Marshall Ross; 18. Carolyn Moore; 19. Lois Meriwether and V.P. Van Meter.

Will

In our departure from the hallowed halls of University High, we, the Senior Class of 1956, hereby leave this our last will and testament for posterity.

I, Dobree Adams, bequeath the presidency of the F.C.B.S. Club to Jayne Bishop.

I, Anne Armstrong, leave the Earl of Essex to his private delights.

I, Nancy Brown, will my horn-rim glasses to Mary Lynne Davis (all the better to do her homework with).

I, W.R. Brown, leave my basketball position to Gerard.

I, Elizabeth Clark, leave my trash in Bob Miller's desk.

I, Mary Bailey Fitts, donate my delicate appetite to Bob Pinson.

We, Billy and Tommy Ginger, leave our mistaken identities to J. Edgar Hoover.

I, Joe Hagin, Leave my numerous out-to-lunch trips to the next Student Government President.

I, Barbara Harper, leave my ability to have a man around to Julie Hessel and Nancy Harding.

I, Warley Harper, depart in utter amazement over my diploma.

I, Betty (Can It Baby) Hays, will my can to Lucy Milward.

I, Barbara Hymson, leave my daily naps in class to anyone who has the vocabulary to awake from a stupor and orate for forty-five minutes.

I, Nancy Marr, donate my neatness to my sister, Martha.

I, Rush Mathews, leave the boiling cauldron to Mr. Porter for use in next year's Trig Class.

I, Mary Lloyd Meade, leave and take my pierced ears with me.

I, Lois Meriwether, leave my ability to vanish in thin air to Houdini.

I, Bob Miller, leave my week-end trips to Huntington, etc. with much regret.

I, Sarah Anne Milward, leave my needle and thread to Mr. Kemper.

I, Carolyn Moore, leave the art student teacher to work in peace.

I, Carolyn Reeves, leave my cute pictures of W.R. to the Annual Staff.

I, Tommy Rich, leave my dancing ability to any "crazy cat" who can copy it.

I, Priscilla Roberts, will my artistic ability to anyone who can stand the art room for four years.

I, Marshall Rose, leave my ability to catch a man to Miss Lamb.

I, Bill Sprague, leave my search for the "room to call home" to the faculty.

I, Virginia Paul Van Meter, leave my Southern spirit to be divided equally among all _____ Yankees.

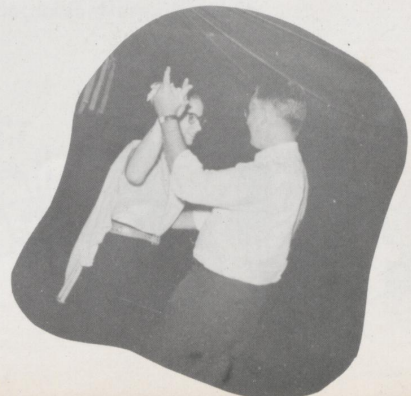
I, Sam Ward, leave my ability to cradle-rob to Jimmy Cowden.

I, Dudley Williams, leave again---this time for good.

I, Linda Williams, leave my free taxi service to the Yellow Cab Company.

I, Jimmy Withrow, leave my permanent wave to Bradley Switzer.

I, Betsy Wright, give the organ back to Shackleton's.



Class Prophecy

"Good evening, ladies and gentlemen. This is William Sprague coming to you from the beautiful star-lit garden of the Rock and Roll Grill (formerly Charlie's). Gathered here tonight for their 1976 reunion are the members of the University High Class of '56."

"In one moment we will be back to talk with the many distinguished personages here tonight. But first a word from Dud Williams."

"Hello, folks. Thank you, Bill. The lovely Rock and Roll Grill, under the new management of Robert S. Miller, is the place to go for your entertainment. Featured tonight will be the musical trumpet of Big Rich and his Po' Boys. Delicious dinners are served at the Rock and Roll Grill. Just taste those juicy steaks, charcoaled under the watchful eye of head chef "Quickie" Mathews, famed for his "second" steaks, rare through and through. So remember, folks, the Rock and Roll Grill is the best place to go!"

"I'm back again, friends, to introduce you to the distinguished visitors gathered here tonight. First, let's speak to our host, "Steve" Miller. Steve practices law and in addition to operating the Rock and Roll Grill, obligingly defends his customers apprehended during raids on this highly respectable establishment."

"Big Rich and the Po' Boys are striking up the band. Rich is nationally known for his "cat-man" trumpet solos. Vocalist with the Po' Boys tonight is Lo' Merry-Weather, formerly Lois of the Class of '56. She is vacationing from her regular night club circuit."

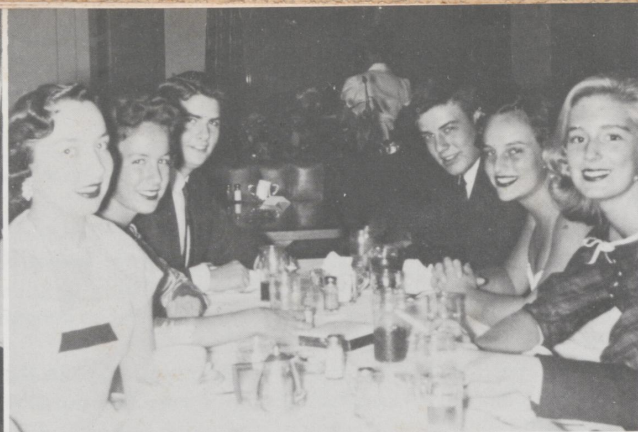
"We're delighted to see all the Browns and Hagins here tonight. The two families, sitting together, are occupying the last five tables on the right side of the roof garden. Well, cheaper by the dozen."

"Representing the armed forces is Bill Ginger. He has risen in the past twenty years from private to four-star general. We're so proud to have such a distinguished personality with us. It is too bad that Tommy was unable to attend tonight's reunion. He was detained in the Navy "brig" for attempting to stow away a girl on the last cruise abroad. Sambo Ward is stationed in Japan, and from last reports, we hear that he is giving those geisha girls a rough time. While on furlough, he plays basketball with the Harlem "Globetrotters."

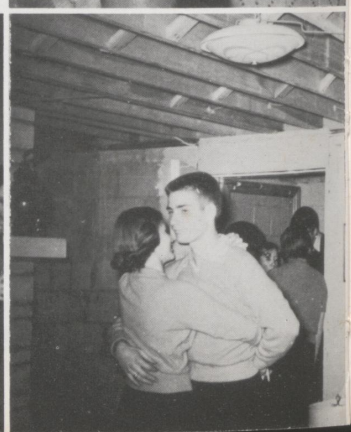
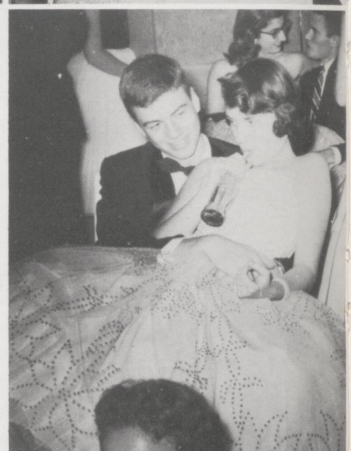
"Over on the left we see Nancy Marr and Barbara Harper, co-owners of the first race horse to win over a billion dollars. The two girls, sporting Dior fashions, are husband-hunting for the third time. Talking with them is P. Beverly Roberts, recently engaged to paint a 25 square foot mural of the famous NanBar Stable winner."

"Talking to Steve Miller is the great modern architect, William Robert Brown. He is responsible for the exquisite design of the Rock and Roll Grill. He is internationally known for his novel slanting glass walls. Lee W. Harper designed the lighting for the grill. Multi-colored spotlights are reflected in the mirrored floors and ceilings. Incidentally, Warley is on the prowl for a seventh wife."

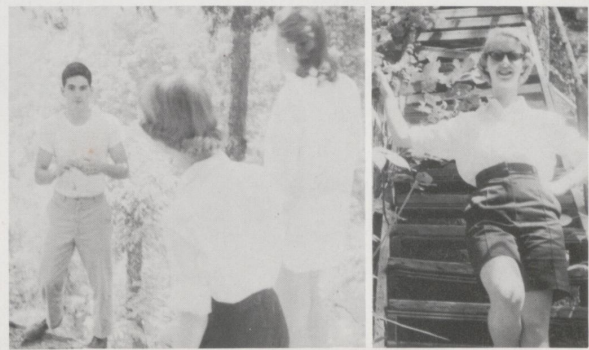
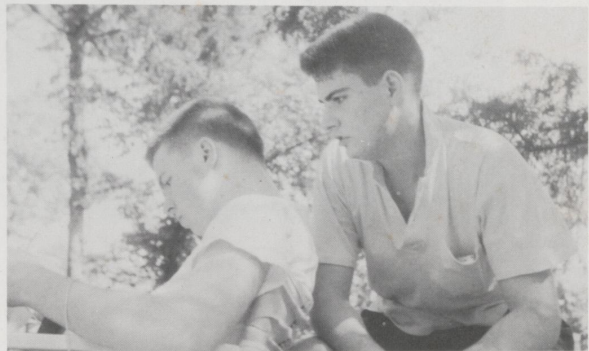
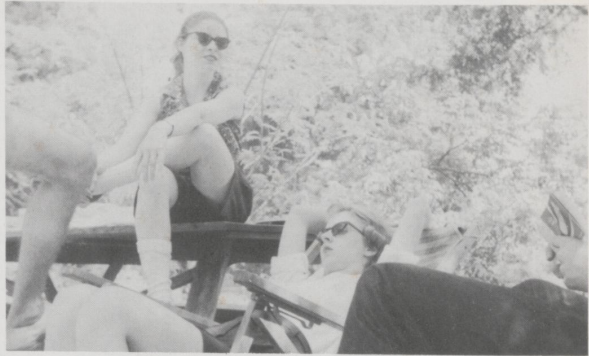
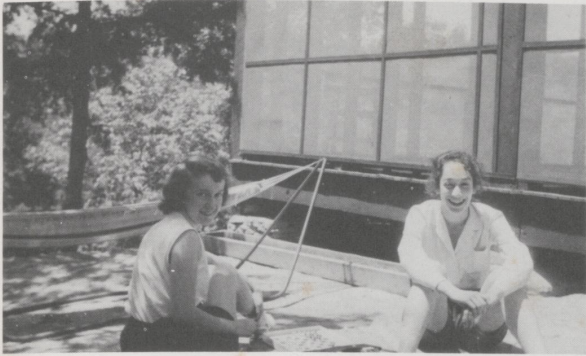




Yes, 1955-56 was a year of numerous, fantastic parties. From the Campbell House to a horse farm to suburban homes, the seniors and constituents made history with the most fabulous parties of all time.



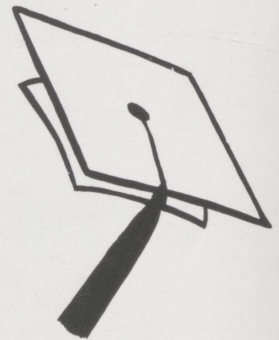
Skip Day





Baccalaureate

The Baccalaureate Service was held at the Central Christian Church on Sunday, May 27. Dr. Leslie Smith gave a sermon entitled "Questing." Prior to the service, the class was entertained, by Anne Armstrong and Rush Matthews, with a breakfast at the Lafayette.





Commencement

Commencement exercises were held June 1 in University School Auditorium. Dr. Walter A. Groves, President of Centre College, gave the principle address, entitled "What's My Line?" Dr. Groves was introduced by Dr. Frank G. Dickey, Dean of the College of Education. Dr. Cierley presided and presented the diplomas. Reverend Robert Estill gave the invocation and the benediction. Music was provided by the Little Choir and Betty Hays.

The traditional P.T.A. Senior Breakfast was held at the home of Mrs. George P. Sprague.

Following graduation, Hannah and Joe Hagin gave a party for the graduates and their dates at the Polo Club.

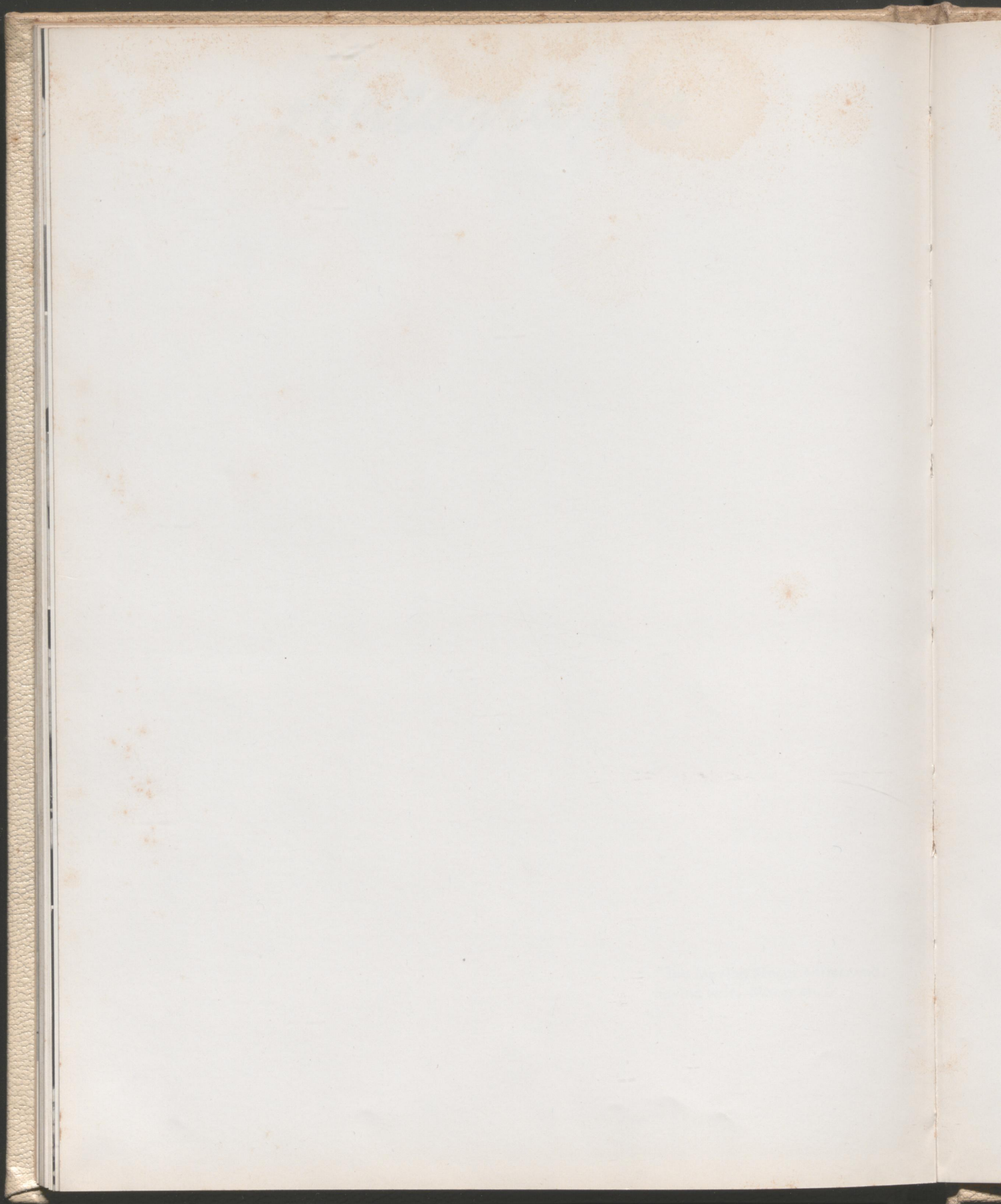


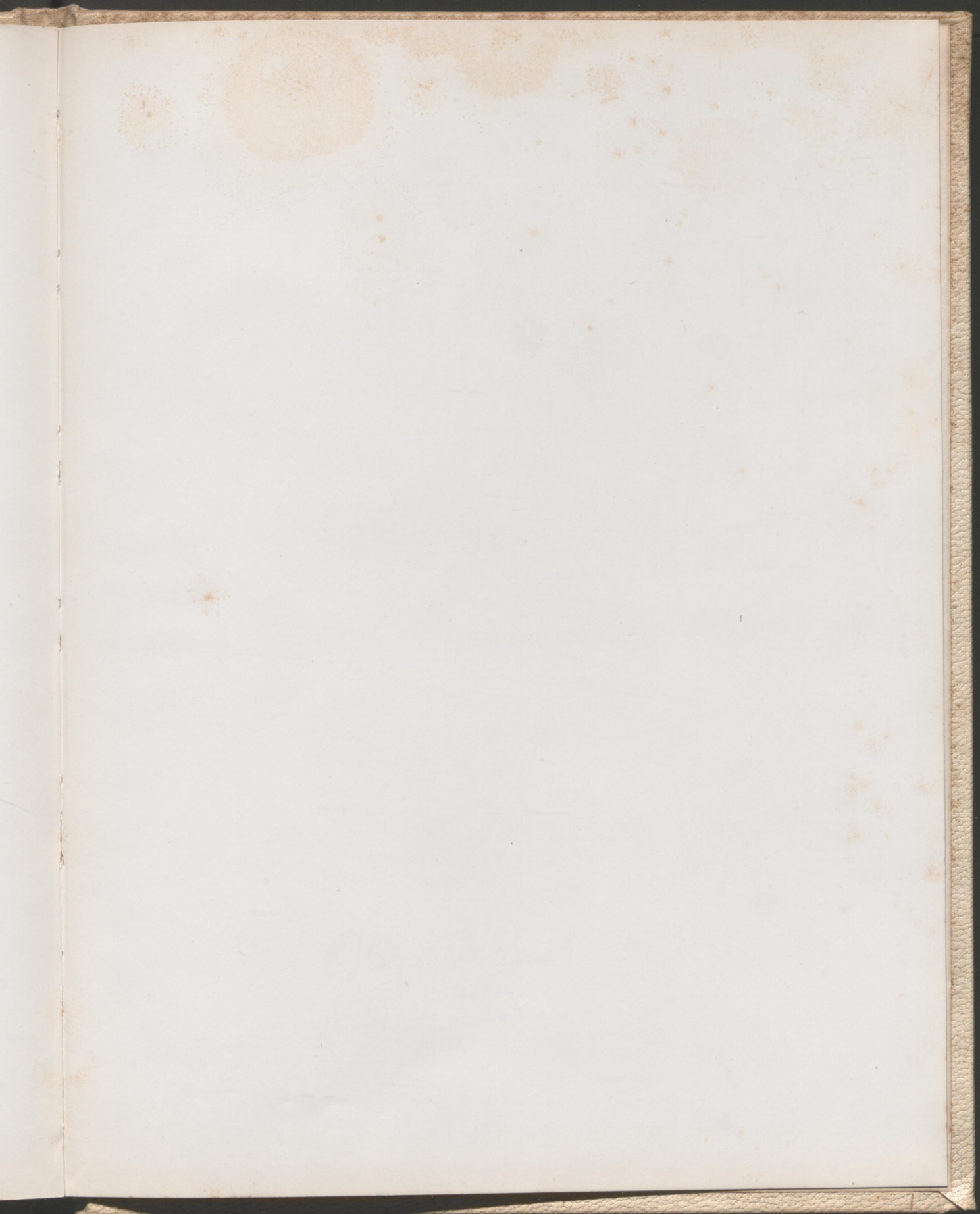
Directory

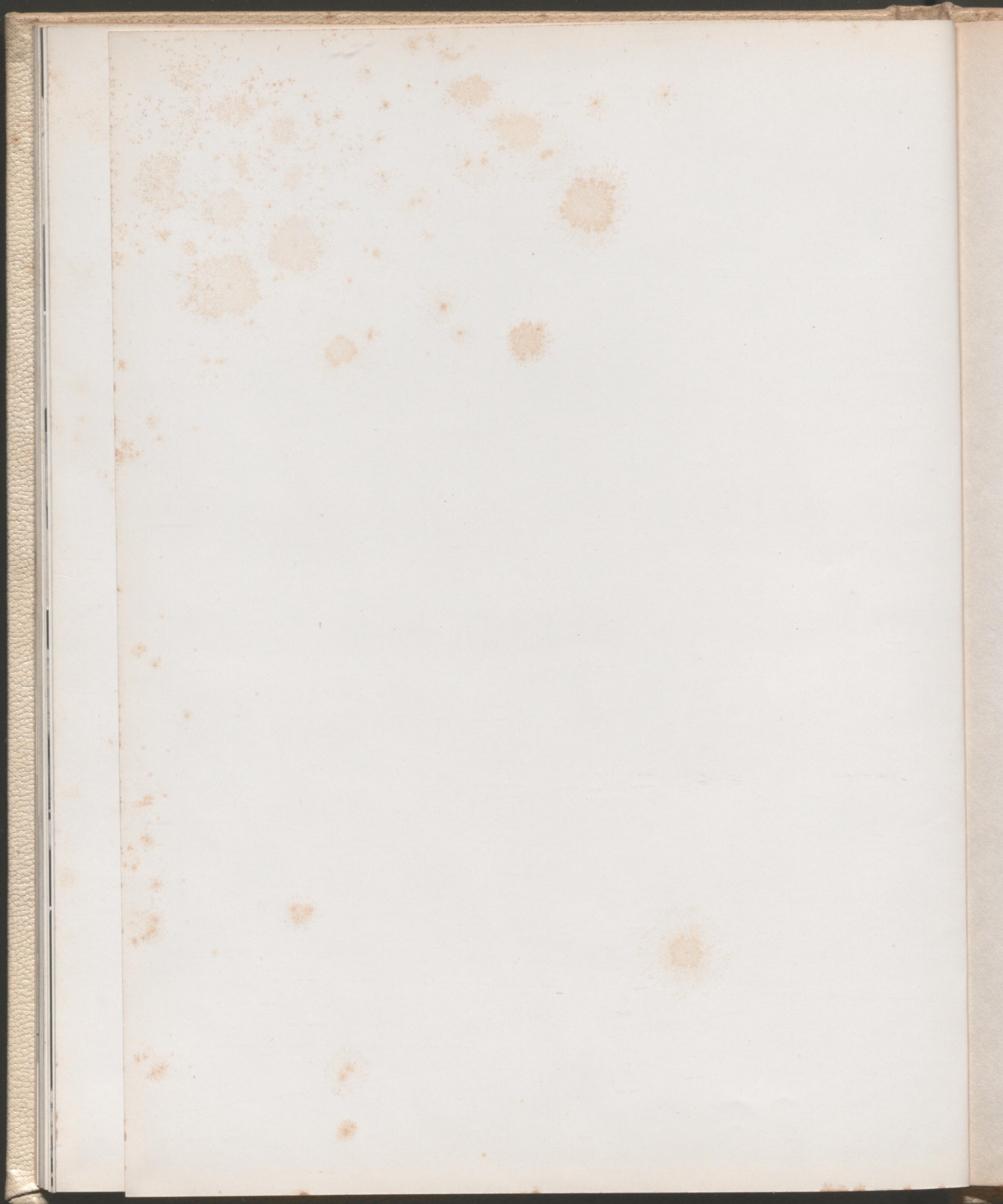
| | | |
|--------------------------|---|--------|
| Adams, Dobree | 450 West 6th Street | 4-3213 |
| Armstrong, Anne | 217 North Broadway | 2-0341 |
| Brown, Nancy Adele | 1312 East Cooper Drive | 2-0478 |
| Brown, W.R. | 212 Woodspoint | 2-0030 |
| Clark, Elizabeth | 248 Tahoma Road | 4-3458 |
| Fitts, Mary Bailey | 1140 East Cooper Drive | 4-0945 |
| Ginger, Bill | 419 Queensway | 3-3050 |
| Ginger, Tommy | 419 Queensway | 3-3050 |
| Hagin, Joe | 327 Duke Road, Apt. 4 | 4-4614 |
| Harper, Barbara | 1741 Lakewood Drive | 2-4510 |
| Harper, Warley | Midway, Kentucky | 4312 |
| Hays, Betty | 1600 Bon Air Drive | 3-0341 |
| Hymson, Barbara | 319 Chinoe Road | 3-3165 |
| Marr, Nancy | Bryan Station Pike | 2-5583 |
| Mathews, Rush | 469 West 3rd Street | 2-2708 |
| Meade, Mary Lloyd | 1546 Tates Creek Pike | 4-8103 |
| Meriwether, Lois | 134 Eastin Road | 4-0470 |
| Miller, Bob | 236 Holliday Road | 3-0132 |
| Milward, Sarah Anne | 538 North Broadway | 3-3459 |
| Moore, Carolyn | 211 Chenault Road | 2-5113 |
| Reeves, Caroline | 217 Woodspoint Road | 3-4713 |
| Rich, Tom | 1855 McDonald Road | 4-1451 |
| Roberts, Priscilla | Winganeek Farm | 4-5014 |
| Rose, Marshall | 118 Owsley Avenue | 2-8501 |
| Sprague, Bill | 128 Shady Lane | 3-5086 |
| Van Meter, Virginia Paul | 306 Holliday Road | 4-2381 |
| Ward, Sam | R.T. #3, Mt. Horeb Pike | 4-5536 |
| Williams, Dudley | 1384 Fontaine | 2-1483 |
| Williams, Linda | Tates Creek Pike, R.R. #1 | 4-5157 |
| Withrow, Jimmy | 424 Dudley Road | 3-1752 |
| Wright, Betsy | 279 Montgomery Avenue Versailles, Kentucky | 555 |

Autographs



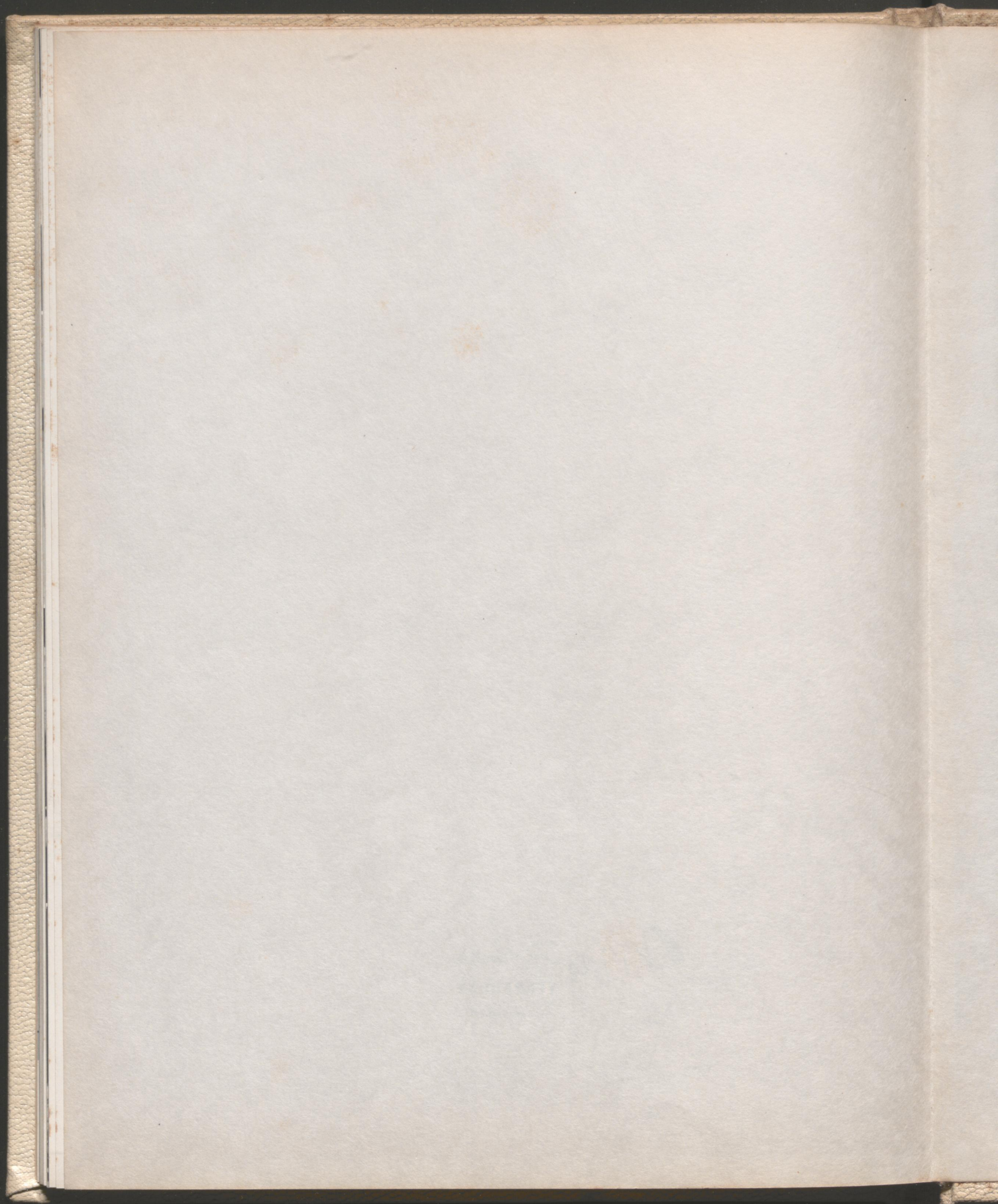


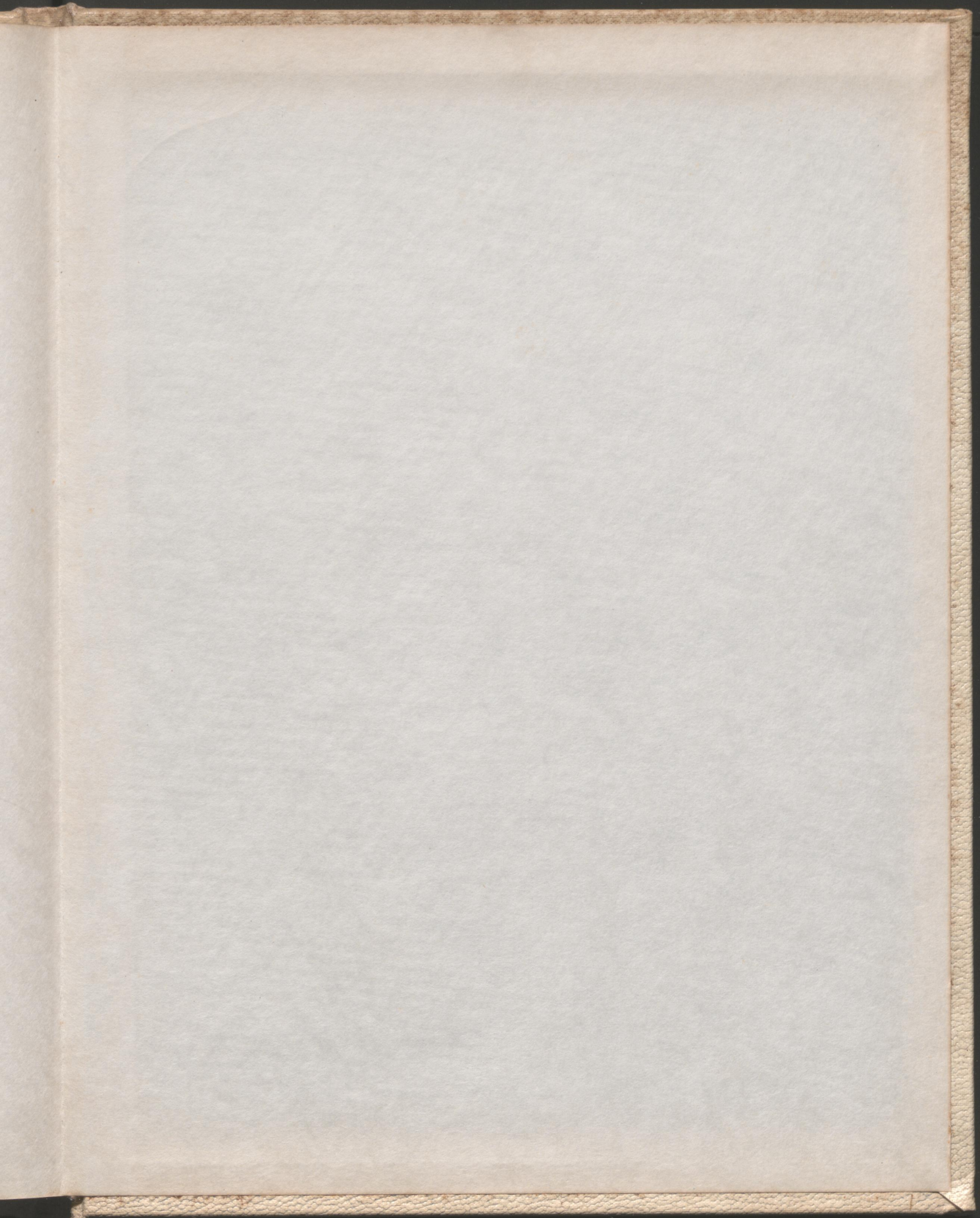




Myers
YEARBOOKS
in deep tone

PACEMAKERS
OF QUALITY





Meyers & Co
TOPEKA, KANSAS
RICHMOND, MISSOURI