

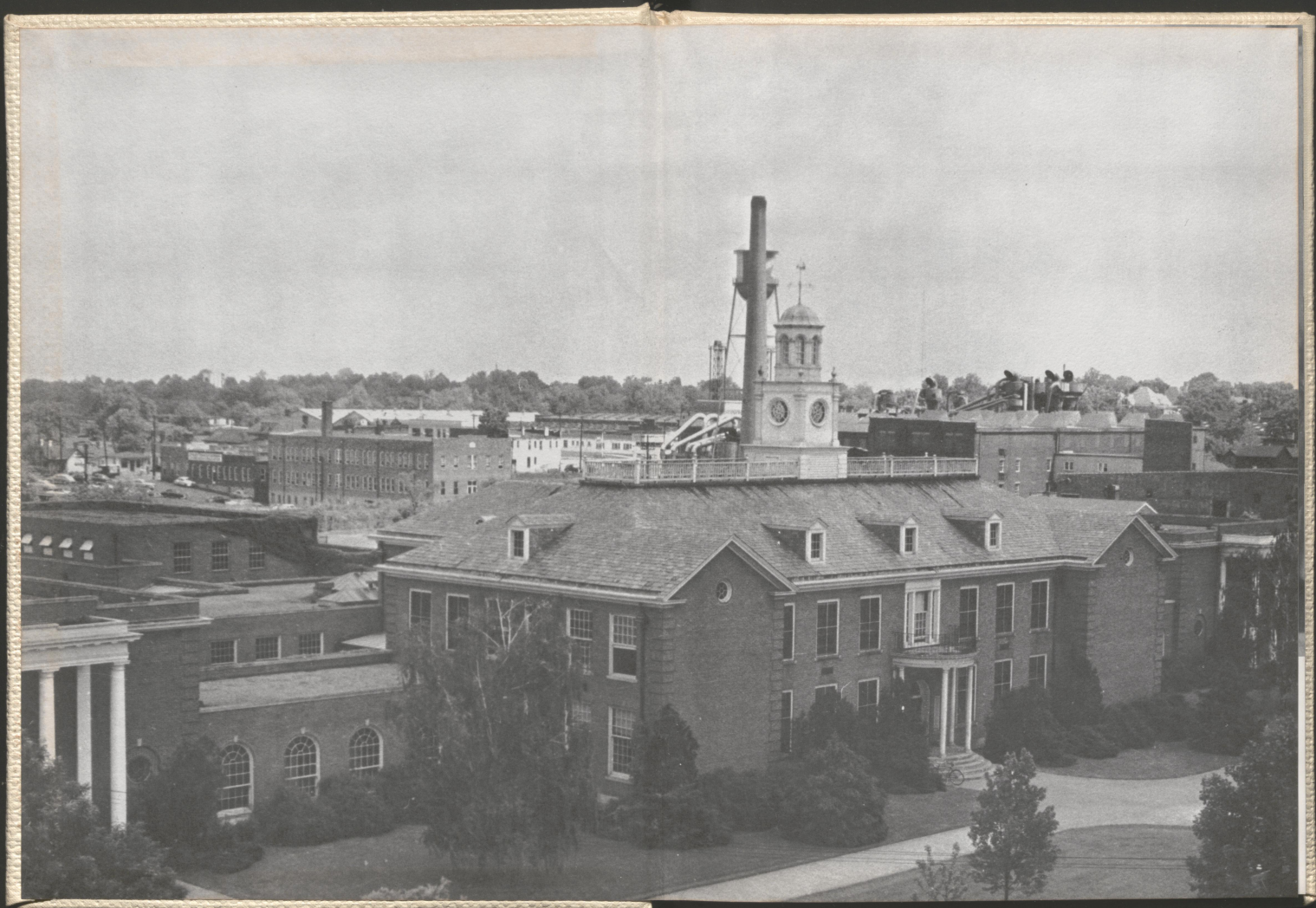
THE PURPLE

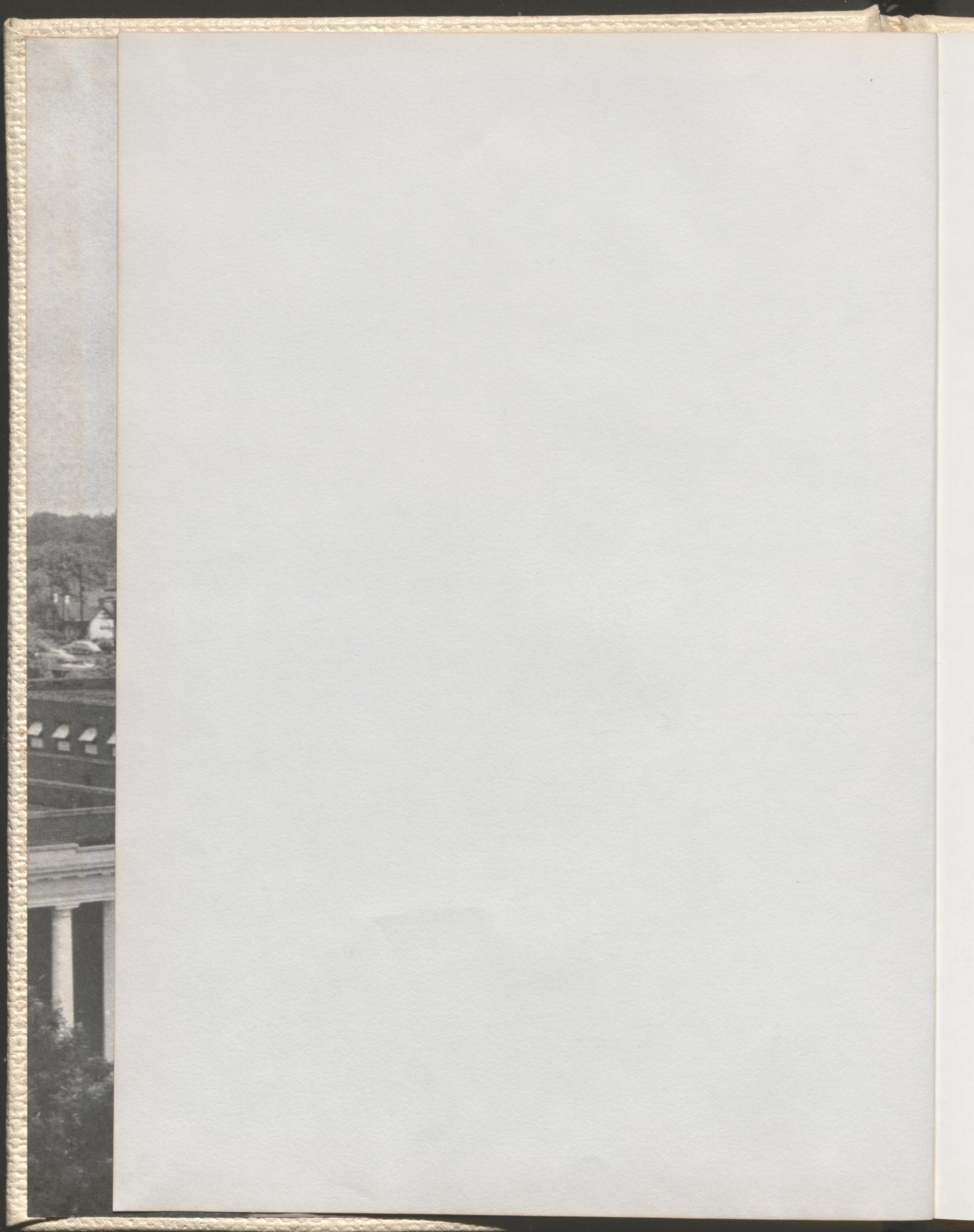
19

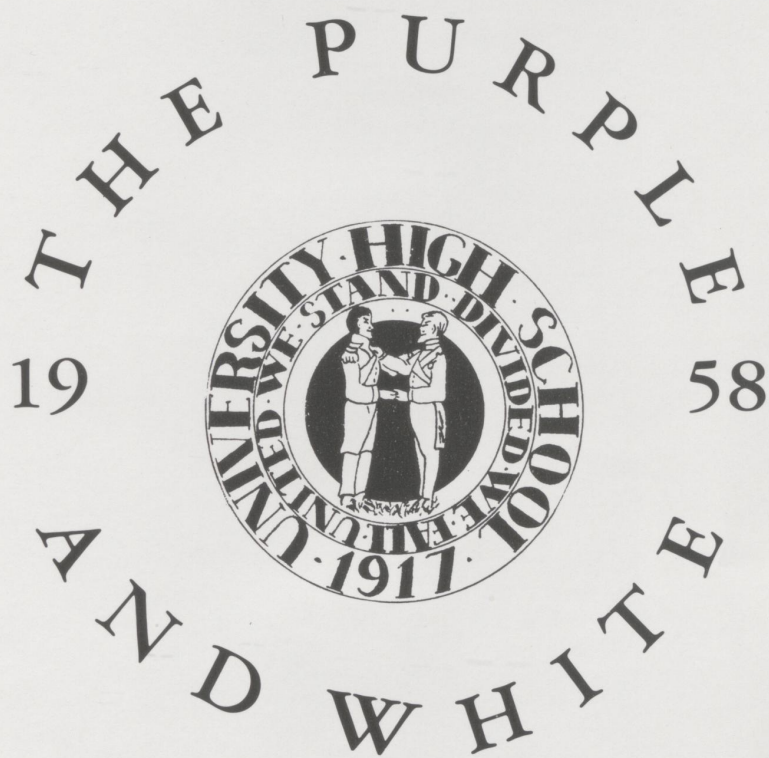


58

AND WHITE







UNIVERSITY HIGH SCHOOL
LEXINGTON, KENTUCKY

DEDICATION

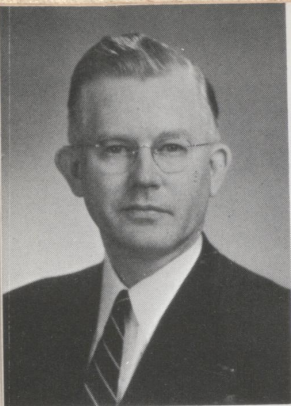


Miss ANNA BROWNING PECK

For her fairness to all, her understanding, her complete devotion to her work, her concern for students, her undying wit, her ability to keep her students interested, her sincerity, her school spirit, and her part in making us better citizens and persons, we do dedicate this 1958 PURPLE AND WHITE to Miss ANNA BROWNING PECK. We will long remember, love, and respect our beloved history teacher and class sponsor.



FACULTY



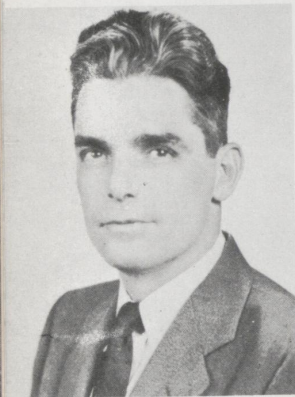
MORRIS BERDYNE CIERLEY
 Director
 Peabody College M. Ed.
 University of Illinois D. Ed.



ANNA BROWNING PECK
 Social Studies
 University of Kentucky B.A.
 University of Kentucky M.A.



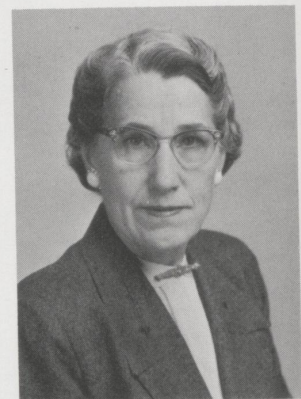
EMMETT D. BURKEEN
 Speech and Psychology
 Murray State College B.S.
 University of Kentucky M.A.



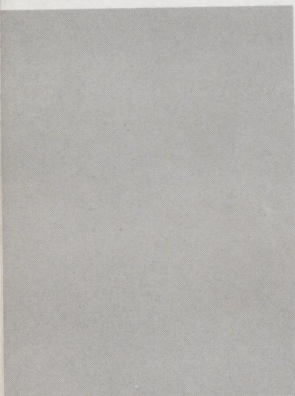
EUCLID LEON PORTER
 Mathematics
 Georgetown College B.A.
 University of Kentucky M.A.



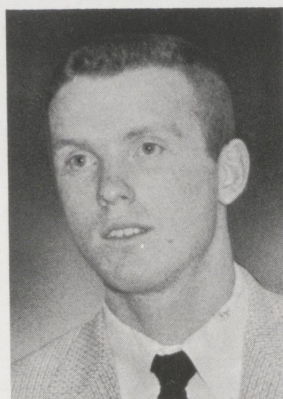
ALMA VIRGINIA CARL
 Seventh Grade
 University of Kentucky B.A.
 University of Kentucky M.A.



MARTHA VIRGINIA SHIPMAN
 Eighth Grade
 Arkansas Teacher's College L. I.
 Arkansas University B.A.
 Arkansas University M.A.



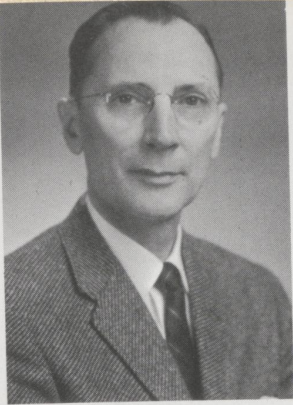
NELLIE DRY
 Typing
 University of Kentucky M.S.
 Concord College B.S.



GERRY CALVERT
 Assistant Coach
 University of Kentucky B.A.



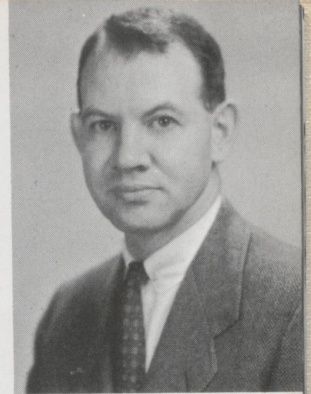
MARGARET ELLEN ROSER
 Librarian
 University of Kentucky B.A.
 University of Kentucky M.A.



DURBIN COLLINS KEMPER
Science
Georgetown College B.S.
University of Kentucky M.A.



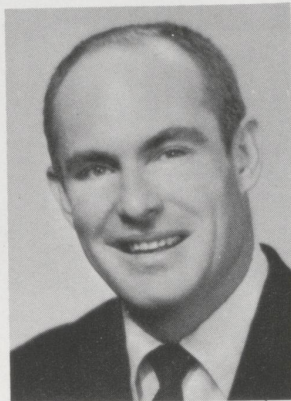
GRACE ANDERSON
English
Georgetown College B.A.
University of Chicago M.A.



JESS GARDNER
Math & Science
University of Kentucky A.B.
University of Kentucky M.A.



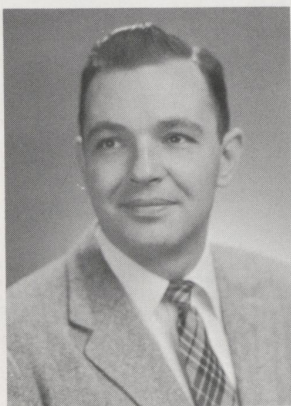
RUTH COLLINS OSBORNE
Georgetown College B.A.
University of Kentucky M.A.



LAWRENCE NORRIS
Band
Columbia University B.A.
Columbia University M.S.



RUTH HOPE HAINES
Art
Temple University B.S.
Columbia University M.A.



EUGENE HUFF
Athletics
Wofford College A.B.
University of Tennessee M.S.

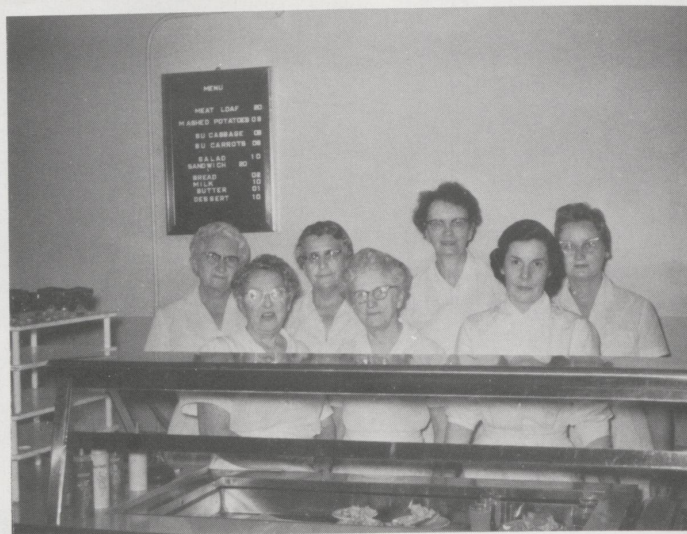


ADA PYLE
Physical Education
Peabody College B.S.



ELEANOR EVANS
Languages
University of Alberta B.A.
University of Oregon M.A.

Mrs. Anderson and our cafeteria staff



Our secretaries, Mrs. Lusk, and Barbara

Our janitors, John and Neal





SENIORS



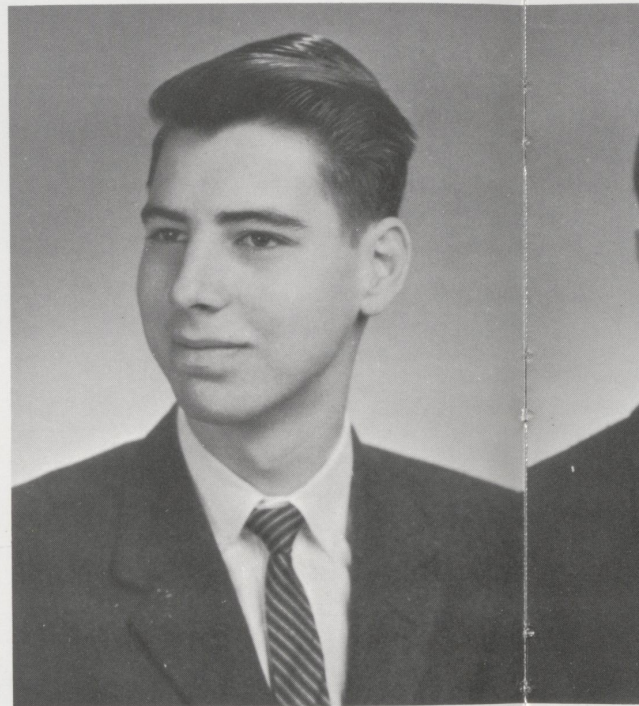
MARY WARDER ANDERSON
"Mary"

Entered from Sayre School '52
Pep Club '55, '56, '57, '58; Glee Club '55, '56, '57, '58; Y-Teens
'55, '56, '58; Y-Teen Basketball Team '56; U-High Lights Staff
'56, '57, '58, Reporter, Photographer, Assistant Make-up Editor.
"The good hate sin because they love virtue."

Ent
Pep
'57
Sw
an
Cl
ver
"A

FRANCIS WILLIAM BRYAN
"Bill"

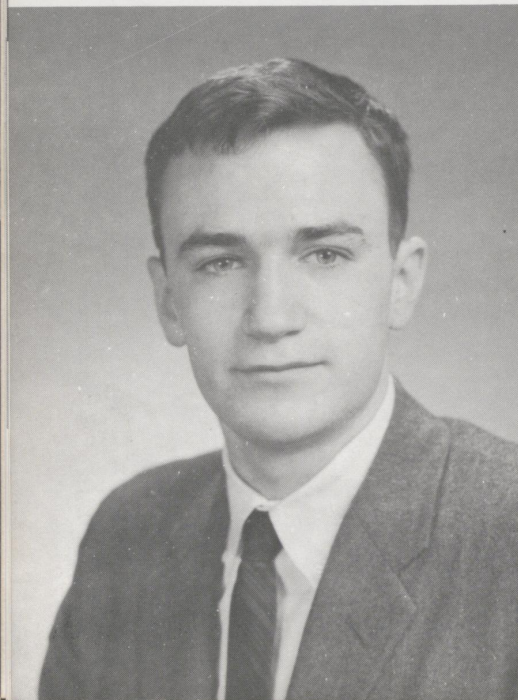
Entered from Fort Lauderdale High School, Fort Lauderdale, Florida
Pep Club '58; Senior Play; Speech Class Play '58; Contest Play '58; As-
sistant Feature Editor of Annual; Baseball Team.
"Life is not so short but that there is time for courtesy."



ERNEST SWOPE CLARKE, III
"Ernie"

Entered from Elementary
Pep Club '55, '56, '57, '58; Treasurer of Pep Club '57; Glee Club
'55, '56, '57, '58, Quartet '57, '58; Regional Music Festival '56, '57, '58;
State Music Festival '56, '57, '58; Fall Conference '58; Regional
Chorus '58; All-State Chorus '57; Student Government '57, '58; Presi-
dent '55; Vice-President '57; Student Council '58; President '58; Beta
Club '57, '58; Treasurer '58; National Honor Society '57, '58; Masque
and Gavel '58; Masque and Gavel Talent Show '56, '57, '58; Senior
Play; Contest Play '58; Regional Speech Contest '58; Photographer
Annual Staff; Prom Court '57, '58; Queen; Class President '57; Bas-
ketball Team '55, '56, '57, '58; Swimming Team '55, '56, '57, '58; Ten-
nis Team '55, '56, '57, '58; Boys' State '57; Kiwanis Cup; Vocal Music
Award '58; French Award '57, '58; Bausch and Lomb Science Award '58.
"Knowledge is that which truly and essentially raises one man above
another."

E
P
'5
M
A
Y
S
N
E
P
'5
"



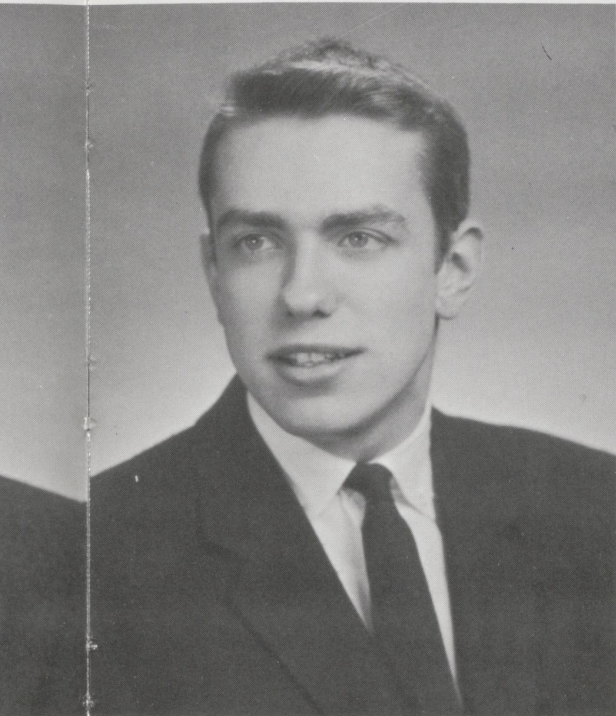
MALINDA BUSH CLAY
"Matilda"

Entered From Morton '53
Pep Club '55,'56,'57,'58; Glee Club '55,'56,'57,'58; Little Choir '57,'58; State Music Festival '57,'58; Y-Teens '56,'57,'58; Y-Teen Swimming Team '57; Student Council '58; Beta Club '58; Masque and Gavel Talent Show '57; Reporter U-High Lights Staff '56,'57,'58; Class Secretary '58; Y-Teen Convention '56; Student Council Convention '58.
"Always laugh when you can, it is the best medicine."



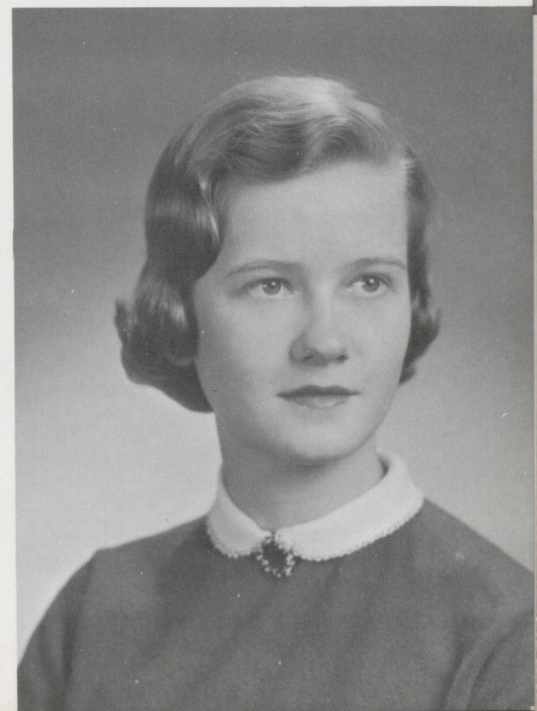
LANDON GREAUD COX
"Lanny"

Entered from Elementary
Pep Club '55,'56,'57,'58; Glee Club '55,'56,'57,'58; Boys Group '56,'57,'58; Double Quartet '58; Band '55,'56,'57,'58; President '56, Vice-President '55; Regional Music Festival '55,'56,'57,'58; State Music Festival '55,'56,'57,'58; Fall Chorus '56,'58; All-State Chorus '56,'57; All-State Band '58; Regional Chorus '58; Student Government '55,'57; President '57; Student Council '57,'58; Vice-President '57,'58; Beta Club '56,'57,'58; Treasurer '57, Vice-President '58; National Honor Society '58; Masque and Gavel Talent Show '56,'57; Senior Play; Speech Class Play '54; Contest Play '58; Prom Court '57,'58; Class President '58; Basketball Team '55,'56,'57,'58; Baseball Team '57,'58; Tennis Team '55,'56,'57,'58; Regional Tennis Champion '57,'58; State Tennis Tournament '57,'58; Boys' State '56; Rotary Club Award '57; Co-Captain of Basketball Team '57,'58; Most Valuable Player Award '57.
"Truth, honor, brave and just; that men might honor and women trust."



ELIZABETH BRYANT EVANS
"Betty"

Entered from Cassidy '52
Pep Club '55,'56,'57,'58; Vice-President '58; Glee Club '55,'56,'57,'58; Little Choir '57,'58; Regional Music Festival '58; State Music Festival '57,'58; Fall Conference '58; Regional Chorus '58; All-State Chorus '56; Y-Teens '55,'56,'57,'58; Vice-President '58; Y-Teen Swimming Team '57,'58; Y-Teen Basketball Team '57; Student Government '57; Student Council '56; Beta Club '57,'58; National Honor Society '58; Masque and Gavel Talent Show '57,'58; Editor of Annual '58; Crowell-Collier Salesmanship Award '57; Prom Court '57,'58; Y-Teen Convention '57; Beta Club Convention '58; Marguerite McLaughlin Yearbook Award '58.
"This above all, to thine own self be true. And it shall follow as the night the day, Thou canst not then be false to any man."





LADY TRIMBLE GREENSLIT
"Lady"

Entered from Louise S. McGehee School, New Orleans, Louisiana. Pep Club '55,'56,'57,'58; Glee Club '55,'56,'57,'58; President '58; Little Choir '56,'57,'58; Double Trio '58; Quartet '58; Regional Music Festival '56,'57,'58; State Music Festival '56,'57,'58; Cheerleader '56; Y-Teens '55,'56,'57,'58; Y-Teen Basketball Team '56,'57,'58; Student Council '57; Beta Club '58; Masque and Gavel '58; Masque and Gavel Show '57,'58; Senior Play; Speech Class Play '57; Contest Play '58; U-Hi Lights Staff '56,'57,'58; Editor '58; Annual Staff '58; Prom Court '57,'58; Vice-President of Class '55; Fall Conference '58; Regional Chorus '58; Enoch-Graham Journalism Award '58; Award for Best Supporting Actress of Senior Play '58. "Wit to persuade and beauty to delight."

Ente
Pep
Clu
Bash
Sum
Beta
'55
ma:
Best
Con
Fal
"If
ha

HELEN FARNAM HAMILTON
"Helen"

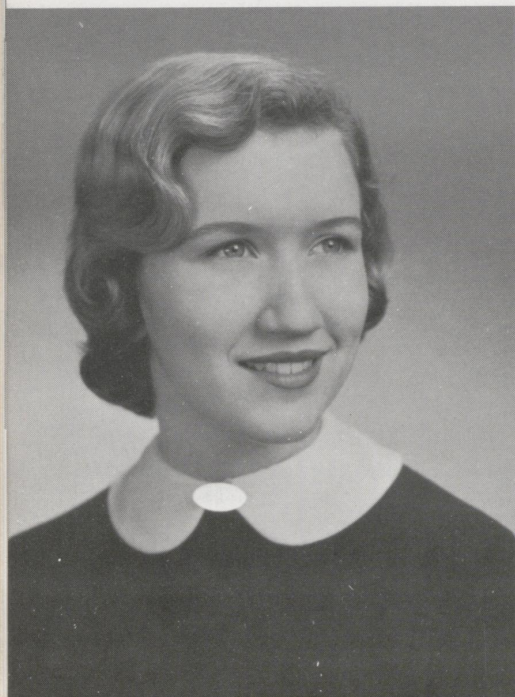
Entered from Elementary
Pep Club '55,'56,'57,'58; Glee Club '55,'56,'57,'58; Band '55,'56,'57;
Regional Music Festival '55; State Music Festival '55,'56,'57,'58;
Y-Teens '56,'57,'58; Secretary '58; Beta Club '58; U-High Lights
Reporter '57,'58; Y-Teen Convention '57.
"Infinite riches in a little room."



SHELIA MAY HARGETT
"Shelia"

Entered from Elementary
Pep Club '55,'56,'57,'58; Glee Club '55,'56,'57,'58; Vice-President
'58; Little Choir '55,'56,'57,'58; President '58; Double Trio '56,'57,'58;
Quartet '58; Regional Music Festival '56,'57,'58; Regional Chorus
'58; State Music Festival '55,'56,'57,'58; Fall Conference '58;
Cheerleader '55,'56; Y-Teens '55,'56,'57,'58; Sergeant at Arms '57;
Y-Teen Basketball Team '56,'57,'58; Beta Club '58; Masque and
Gavel Talent Show '56,'57; Senior Play '58; U-High Lights Staff
'55,'56,'57,'58; Typist '56,'57; Typist for Annual '58; Prom Court
'57,'58.
"Fun Loving, with a gentle manner and a warm smile about her."

Ent
Pep
Re
Gov
An
Te
"Q



MARGARET KING LISLE
"Pegsie"

Entered from Elementary
Pep Club '55,'56,'57,'58; Vice-President '55; President '58; Glee Club '55,'56,'57,'58; Y-Teens '55,'56,'57,'58; Treasurer '58; Y-Teen Basketball Team '57,'58; Y-Teen Swimming Team '57; Y-Teen Summer Conference '57; Student Council Secretary-Treasurer '58; Beta Club '57,'58; National Honor Society '58; U-High Lights Staff '55,'56; Reporter for Herald-Leader '57,'58; Crowell-Collier Salesmanship Award '57; Best Old Member of Pep Club Award '55,'57; Best New Member Award '56; Secretary of Class '57; Y-Teen Convention '56,'57; Beta Club Convention '58; All-State Chorus '57; Fall Chorus '58; Student Council Convention '58.
"If you want work well done, select a busy man . . . the other kind has no time."



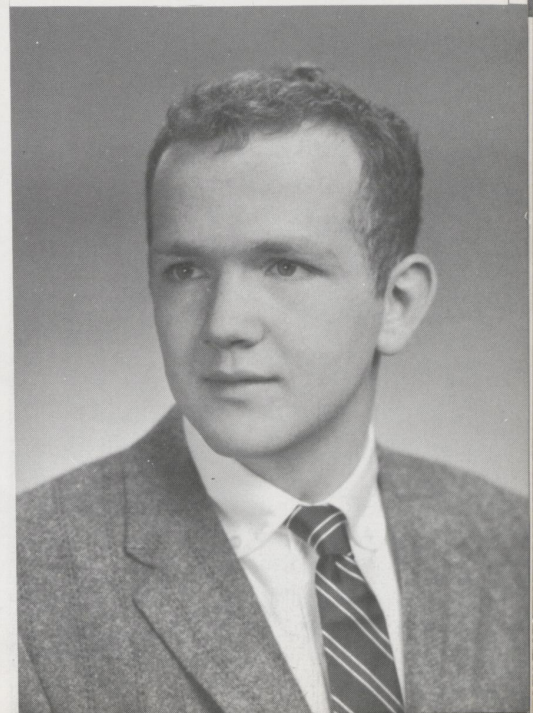
LUCY MERIWETHER MANLY
"Lucy"

Entered from Elementary
Pep Club '55,'56,'57,'58; Glee Club '55,'56,'57,'58; Cheerleader '55,'57,'58; Y-Teens '55,'56,'57,'58; Student Government Secretary '55,'58; Beta Club '57,'58; Secretary '58; U-High Lights Staff '55,'56,'57,'58; Production Manager '58; Advertising Manager and Typist for Annual '58; Best Old Member of Pep Club Award '56; Crowell-Collier Salesmanship Award '57; Treasurer of Class '56; Secretary '57; Y-Teen Convention '56; Beta Club Convention '58.
"She had a head to contrive, a tongue to persuade, and a hand to execute any mischief."



CHARLES REYNOLDS MAXSON, Jr.
"Chuck"

Entered from York High School, Elmhurst, Illinois, '55.
Pep Club '56,'57,'58; Glee Club '56,'57,'58; Vice-President '58; Regional Chorus '58; Fall Conference '58; Boys Group '57,'58; Student Government '57; Beta Club '58; Senior Play; Assistant Sports Editor of Annual '58; Prom Court '57,'58; Social Committee '56; Basketball Team '56,'57,'58; Swimming Team '58; Track Team '56.
"Quiet and sincere persons are welcome everywhere."





WILLIE ANN NEWBURY
"Puddin"

Entered from Elementary
Pep Club '55,'56,'57,'58; Treasurer '55; Glee Club '55,'56,'57,'58;
Little Choir '55,'56,'57,'58; Double Trio '58; Regional Music Festival
'56,'57,'58; State Music Festival '56,'57,'58; Cheerleader '55,'57;
Y-Teens '55,'56,'57,'58; Interclub Council Representative '57; Y-
Teen Basketball Team '56,'57; Beta Club '57,'58; President '58;
Senior Play '58; U-High Lights Staff Reporter '55,'56,'57,'58; As-
sociate Editor of Annual '58; Crowell-Collier Salesmanship Award
'57; Social Committee '57; Convocation '56; Y-Teen Convention
'56,'57; Beta Convention '58; Marguerite McLaughlin Yearbook
Award '58; National Merit Scholarship Certificate '58; All-State
Chorus '56,'57; Regional Chorus '58.

"As pure in thought as angels are; to know her is to love her."

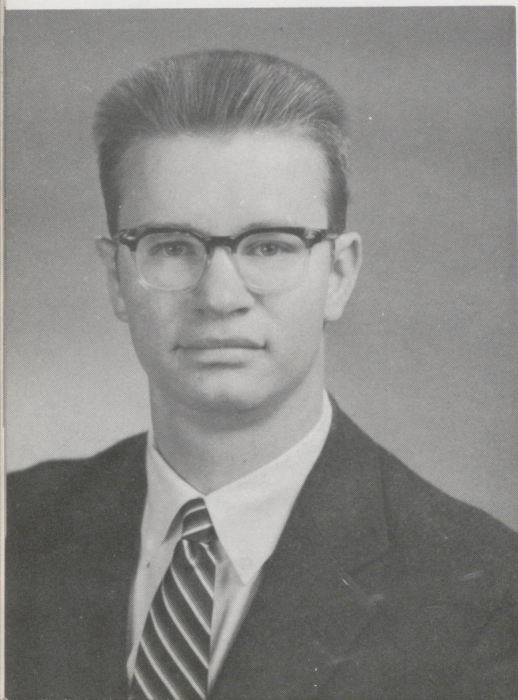
JOSEPHINE LINDSAY NUNN
"Lin"

Entered from Elementary
Pep Club '55,'56,'57,'58; Glee Club '55,'56,'57,'58; Little Choir
'55,'56,'57,'58; Vice-President '57; Regional Music Festival '56;
State Music Festival '55,'56,'57,'58; All-State Chorus '56; Y-Teens
'55,'56,'57,'58; Beta Club '56,'57,'58; Secretary '57; National Honor
Society '58; Masque and Gavel '56,'57,'58; President '57; Masque
and Gavel Talent Show '55,'57,'58; Senior Play Cast '58; Contest
Play '57; Regional Speech Contest '55,'56,'57; State Speech Contest
'56,'57; Business Manager of Annual '58; Prom Court '58; Queen '58;
Social Committee '57; Convocation Committee '56; Class President
'55; Best Actress Award '58.
"A perfect woman, nobly planned; to warn, to comfort, and com-
mand."



JOHN BISHOP ODEAR
"Johnny"

Entered from Cassidy
Pep Club '55,'56,'57,'58; Sergeant at Arms '57; Regional Music
Festival '57; State Music Festival '57; Student Government '58;
Crowell-Collier Salesmanship Award '57; Basketball Team Manager
'56; Tennis Team '55; Glee Club '57,'58.
"As he thinketh in his heart, so is he."



ANN PERRY PATTERSON
"Perry"

Entered from Morton '55
Pep Club '55,'56,'57,'58; Glee Club '55,'56,'57,'58; Secretary-Treasurer; Band '55,'56,'57; Treasurer '56; Regional Music Festival '55,'56,'57; State Music Festival '55,'56,'57; Y-Teens '55,'56,'57,'58; President '58; Y-Teen Basketball Team '56,'57,'58; Y-Teen Swimming Team '56,'57,'58; Y-Teen Summer Conference '57; Student Government '58; Beta Club '57,'58; National Honor Society '57,'58; President '58; Senior Play; U-High Lights Staff '56,'57,'58; Photographer '57; Exchange Editor '58; D.A.R. Good Citizenship Award '58; Y-Teen Convention '57; Beta Club Convention '58; Enoch-Grehan Award '58.

"Whatever things are true, honest, just, pure, lovely, whatsoever things are of good report; if there be any virtue, and if there be any praise, think on these things."



VIRGINIA LEE PREWITT
"Jenny"

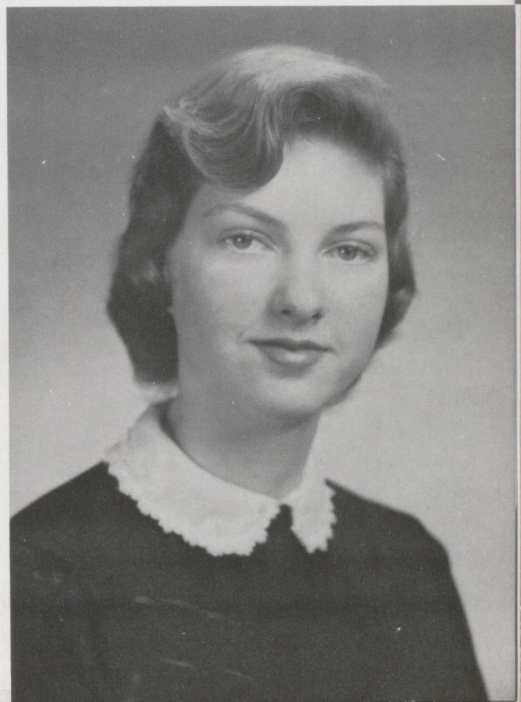
Entered from Elementary
Pep Club '55,'56,'57,'58; Glee Club '55,'56,'57,'58; Little Choir '57,'58; Secretary '58; Double Trio '57,'58; Band '55,'56; Vice-President '56; Regional Music Festival '57,'58; State Music Festival '55,'56,'57,'58; Y-Teens '58; Beta Club '58; Speech Class Play '56; U-High Lights Staff '58; Feature Editor '58; Social Committee '58; Girls' State '57; Regional Chorus '58.
"She is excellent who can suit her temperament to any circumstance."

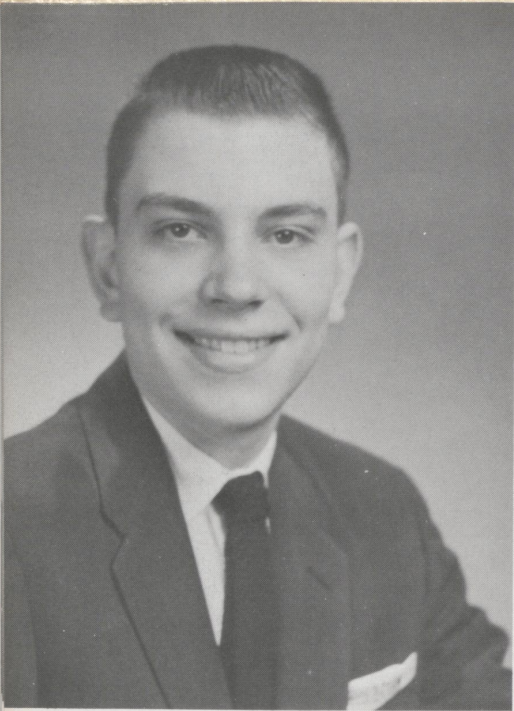


RACHEL FAULKNER REED
"Rae"

Entered from Elementary
Pep Club '55,'56,'57,'58; Glee Club '55,'56,'57,'58; Little Choir '57,'58; Vice-President '58; Cheerleader '55; Y-Teens '55,'56,'57,'58; Y-Teen Basketball Team '56,'57; Y-Teen Swimming Team '56; Beta Club '58; Masque and Gavel '58; Masque and Gavel Talent Show '57,'58; Senior Play; Dramatics Class Play '58; U-High Lights Staff '58; Circulation Manager of Annual '58; Crowell-Collier Salesmanship Award '57; Prom Court '57,'58; Social Committee '57; Convocation Committee '56,'58; Fall Conference '58; All-State Chorus '56.

"She is pretty to walk with, and witty to talk with, and pleasant too, to think on."



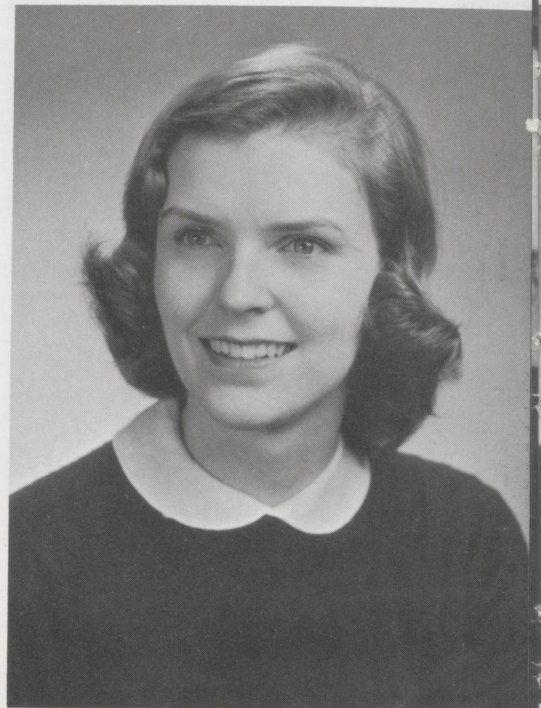


ADOLPH F. RUPP, Jr.
"Herky"

Entered from Elementary
Pep Club '55,'56,'57,'58; Student Government '58; President '58;
Basketball Team '55,'56,'57,'58; Baseball Team '57,'58; Boys' State
'57; Co-Captain of Basketball Team '58; Most Valuable Player '58.
"There's honesty, manhood, and good fellowship in thee."

EVA LOUISE SPINNEY
"Louise"

Entered from Henry Clay '57
Pep Club '58; Glee Club '58; Band '58; Y-Teens '58; Y-Teen Basket-
ball Team '58; Y-Teen Swimming Team '58; Senior Play '58.
"Thou cans't not touch the freedom of my mind."



CHARLES A. STEWART
"Charlie"

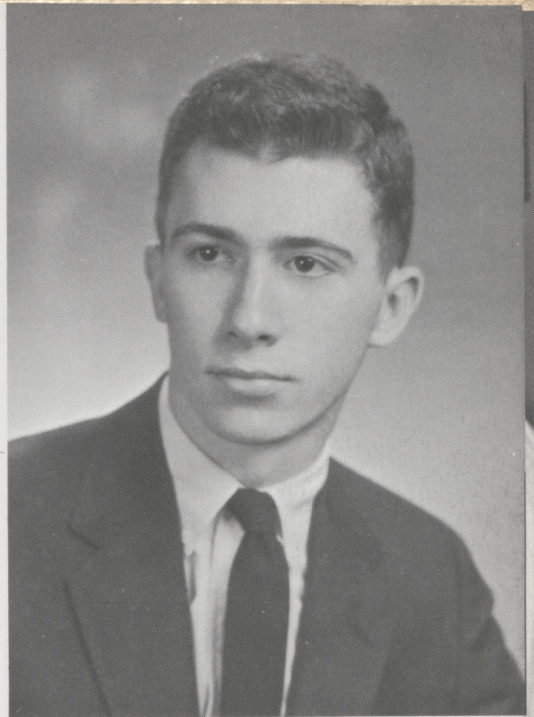
Entered from Henry Clay '56
Pep Club '57,'58; Glee Club '57,'58; Regional Music Festival '57,'58;
State Music Festival '57,'58; Fall Conference '58; Regional Chorus
'58; Student Government '58; Senior Play; Basketball Team '57;
Swimming Team '57,'58; State Diving Champion, Class B, '58.
"Why should life all labor be?"



WILLIAM BRADLEY SWITZER
"Bradley"

Entered from Elementary
Pep Club '55,'56,'57,'58; Glee Club '55,'56,'57,'58; Double
Quartet '58; Band '55,'56,'57,'58; President '57; Regional Music
Festival '55,'56,'57,'58; State Musical Festival '55,'56,'57,'58; Stu-
dent Council '58; Beta Club '57,'58; National Honor Society '58;
Masque and Gavel '57,'58; Vice-President '58; Masque and Gavel
Talent Show '55,'56,'57,'58; Senior Play '58; Contest Play '58;
Regional Speech Contest '55,'57,'58; State Speech Festival '55; Sports
Editor and Photographer for Annual; Prom Court '57; Basketball Team
'55,'56,'57,'58; Swimming Team '58; Baseball Team '57,'58; Tennis
Team '55,'56,'57,'58; State Swimming Meet '58; Regional and State
Tennis Tournament '57; Student Council Convention '58; Regional
Chorus '57; Fall Chorus '56; All-State Chorus '56; Boys Group
'56,'57,'58; Best Actor Award '58; Junior League Music Merit
Award '58.

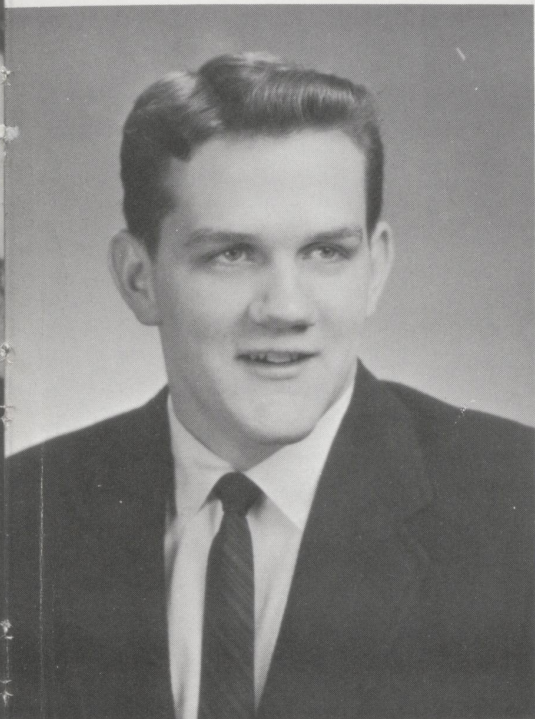
"The secret to success is constancy to purpose."



WILLIAM CRAIL TAYLOR
"Bill"

Entered from Elementary
Pep Club '55,'56,'57,'58; Sergeant at Arms '57; Student Council
'55,'57; Prom Court '58; Basketball Team '55,'56,'57,'58; Swimming
Team '55,'56,'57,'58; Baseball Team '57; Track Team '55,'56;
President of Sophomore Class.

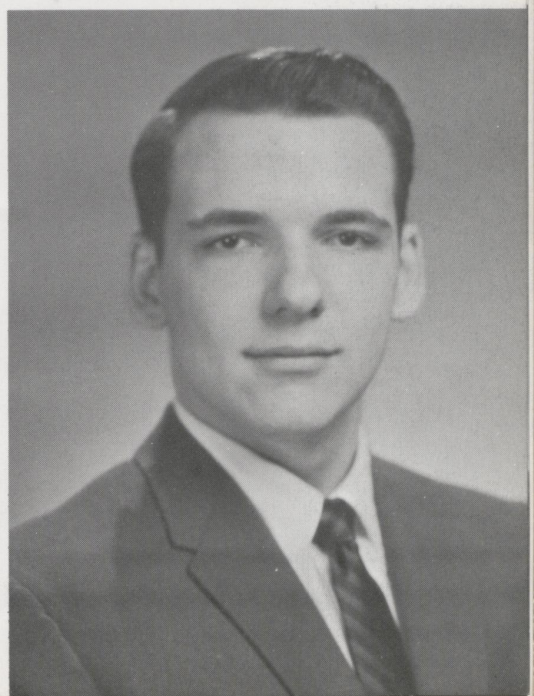
"There's a good time coming, Boys-- a good time."

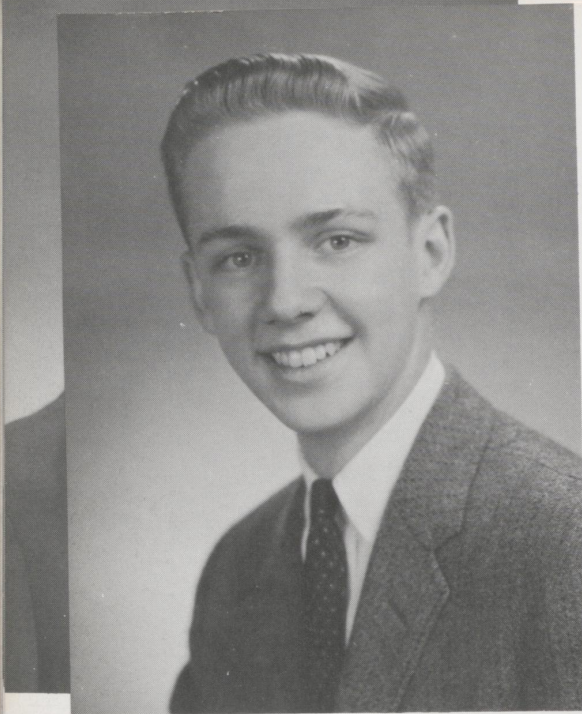


WILLIAM ALLEN TOLMAN, Jr.
"Allen"

Entered from Elementary
Pep Club '55,'56,'57,'58; Glee Club '55,'56,'57,'58; Band '55,'56,
'57,'58; Regional Music Festival '55,'56,'57,'58; State Music Festival
'55,'56,'57,'58; Fall Chorus '57; All-State Chorus '56; Boys Group
'56,'57,'58; Regional Chorus '58; Feature Editor of Annual '58; Bas-
ketball Team '55,'56,'57,'58.

"A sensible, moral, and well-bred man."





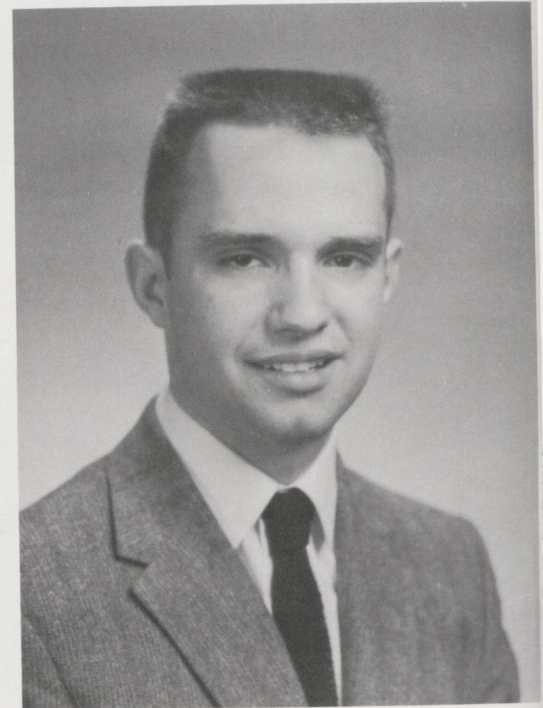
CHARLEY CROWE TURNBULL
"Charley"

Entered from Bourbon County High School '56
Pep Club '57, '58; Sergeant at Arms '58; Glee Club '57, '58; Regional Music Festival '57, '58; State Music Festival '57, '58; Boys Group '57, '58; Beta Club '58; Masque and Gavel '58; Masque and Gavel Talent Show '57; Senior Play; Dramatics Class Play '57, '58; Contest Play '57, '58; Prom Court '57; Convocation Committee '58; Vice-President of Class '57, '58; Boys State '57; Regional Chorus '58.
"Many loved him but he loved the game."

E
P
b
"

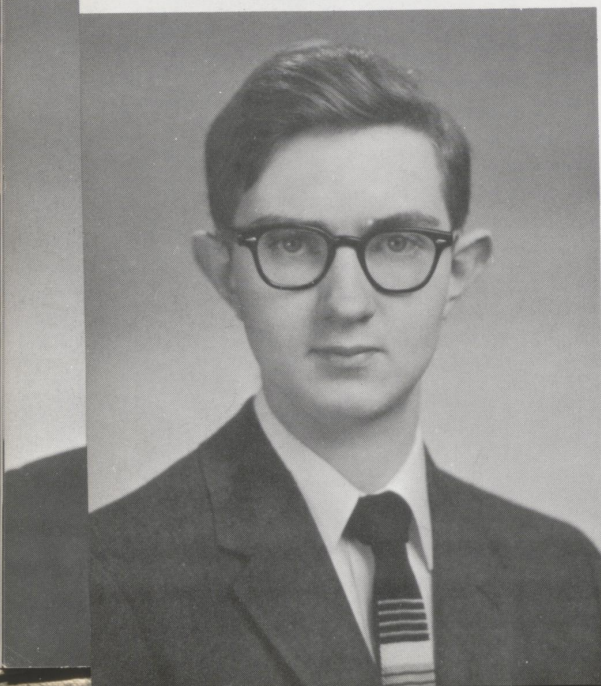
JAMES JOHN VARELLAS, Jr.
"Jim"

Entered from Scott County '58
Pep Club '58; Basketball '58; Baseball '58; Senior Play '58.
"The diligent farmer plants trees, of which he, himself, will never see the fruit."



EBERT KEITH WARREN, Jr.
"Ebert"

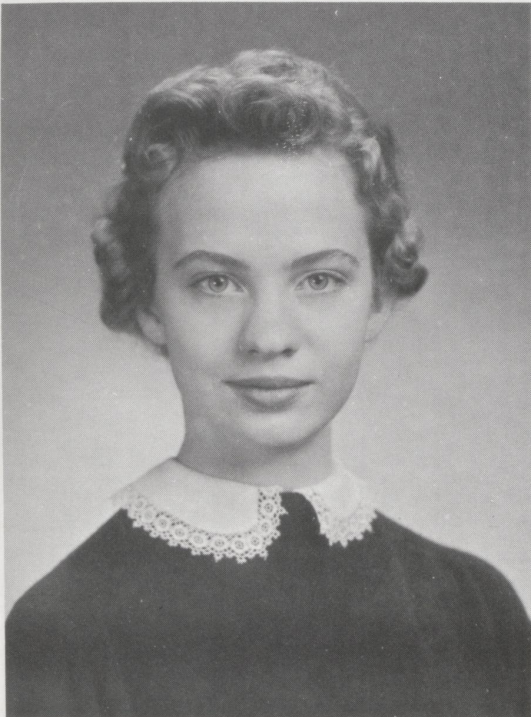
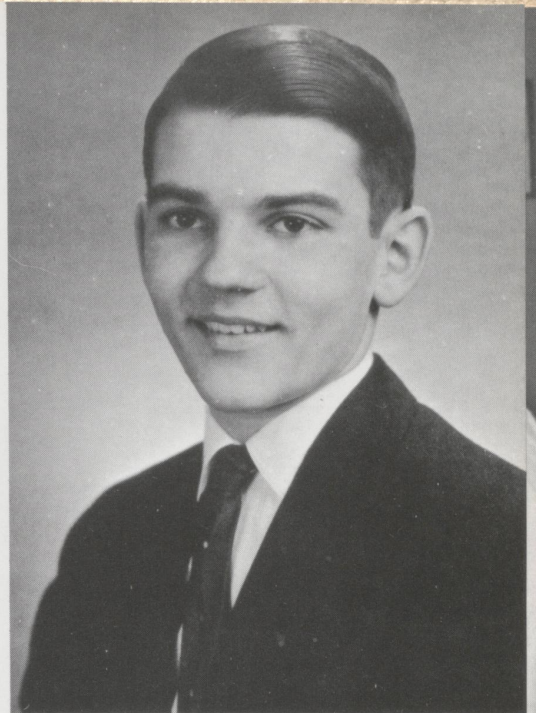
Entered from Kingston High School, Kingston, New York, '58
Pep Club '58; Beta Club '58.
"Then give the world the best you have, and the best will come back to you."



JOHN HOWARD WILLIAMS
"John Howard"

Entered from Elementary
Pep Club '55,'56,'57,'58; Glee Club '55,'56,'57,'58; Boys Group
'56,'57,'58; Band '55,'56,'57,'58; President '58; Regional Music
Festival '55,'56,'57,'58; State Music Festival '55,'56,'57,'58; Beta
Club '57,'58; Masque and Gavel '57,'58; Masque and Gavel Talent
Show '58; Senior Play; Speech Class Play '57; Regional Speech
Contest '57,'58; U-High Lights Staff Reporter '55, Sports Editor '58;
Crowell-Collier Award '57; Best Old Member of Pep Club '58; Social
Committee '58; Basketball Team '55,'56,'58; Swimming Team
'55,'56; Baseball Team '57,'58; Tennis Team '55; All-State Chorus
'56; Fall Chorus '56,'57; Regional Chorus '58; National Speech
Award '58.

"Every man's life is a plan of God."



MARGARET ANNE WYSE
"Margaret Anne"

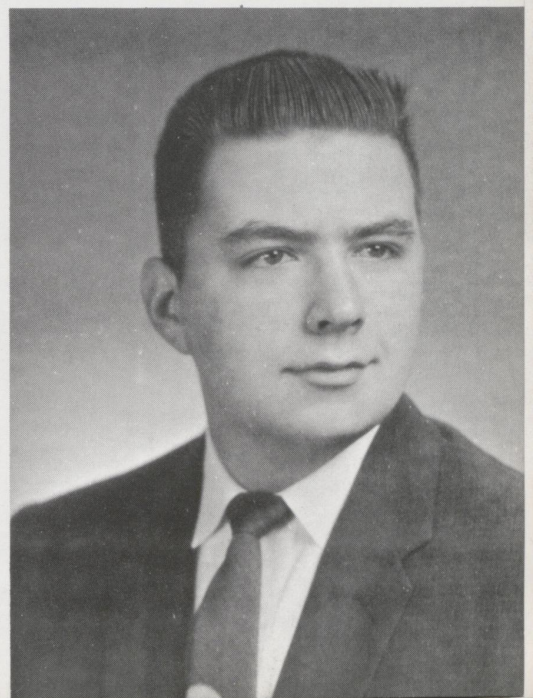
Entered from Gulf Park Junior College, Gulf Port, Mississippi
'58
Pep Club '58; Glee Club '58; Little Choir '58; Regional Music
Festival '58; State Music Festival '58; Beta Club '58; Masque
and Gavel '58; Senior Play; U-High Lights Staff '58; Regional
Chorus '58.

"It is in learning music that many youthful hearts learn to
love."

WILLIAM JOSEPH YOUSEY
"Yosemite"

Entered from Kingston High School, Kingston, New York '58
Pep Club '58; Glee Club '58; Double Quartet '58; Band '58, Vice-
President '58; Regional Music Festival '58; Fall Conference '58;
Regional Chorus '58; Beta Club '58; Senior Play '58; Contest Play '58;
Assistant Art Editor of Annual '58; Baseball Team '58.

"Good Humor is one of the best articles."

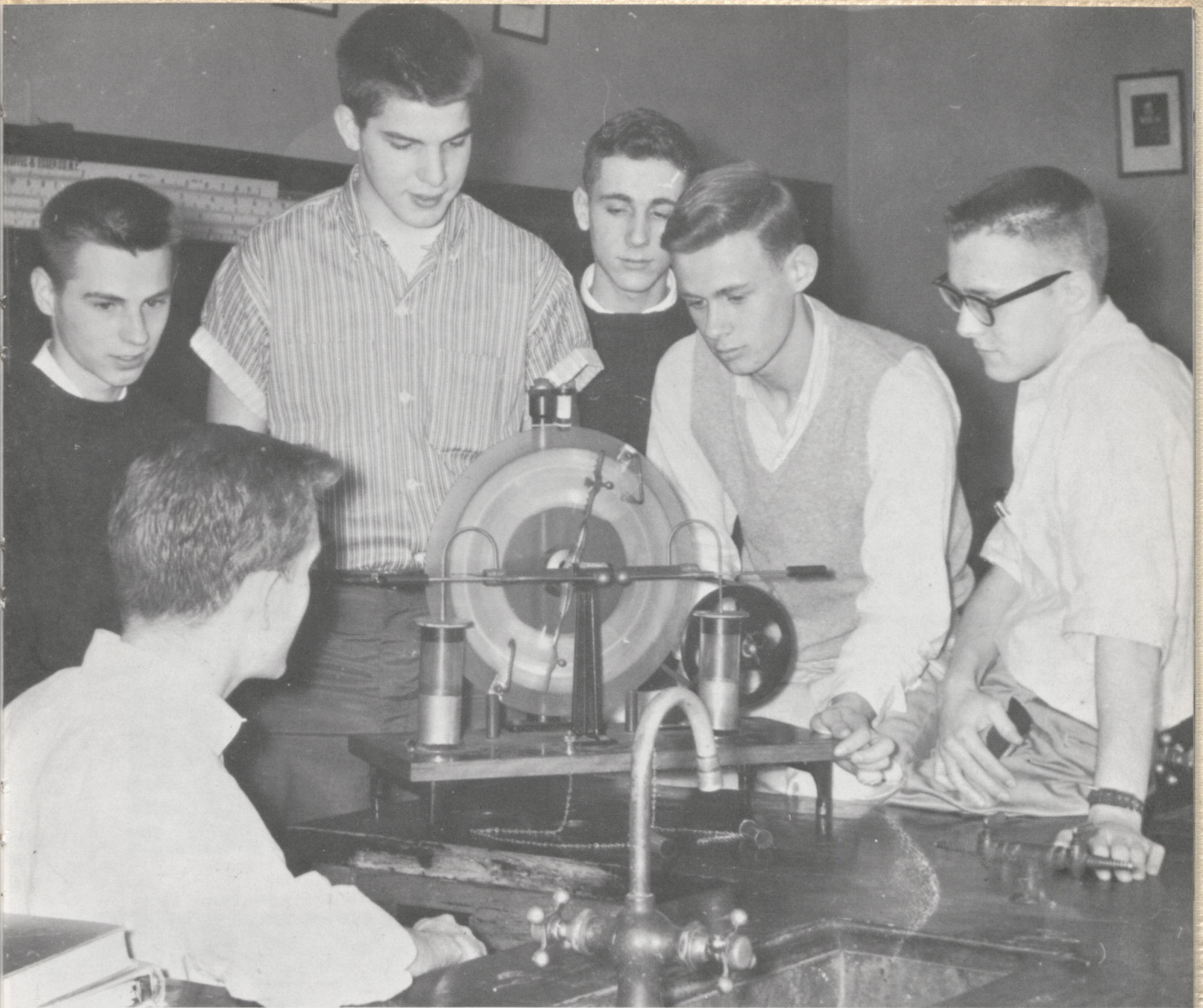




FIRST ROW: Shelia Hargett, Allan Tolman, Lucy Manly, Bradley Switzer, Pegsie Lisle and Malinda Clay. SECOND ROW: John Howard Williams, Mary Anderson, Bill Yousey, Rae Reed, Lanny Cox. THIRD ROW: Puddin Newbury, Bill Taylor, Helen Hamilton, Ebert Warren, Louise Spinney. FOURTH ROW: Chuck Maxson, Lindsay Nunn, Margaret Anne Wise, Betty Evans, Johnny Odear. FIFTH ROW: Perry Patterson, Virginia Prewitt.



WAY BACK WHEN—



UNDERCLASSMEN

JUNIOR CLASS



OFFICERS: Tommy Adams, President; Wayne Haffler, Vice-President; Dotty Davis, Secretary; Elsie Barr, Treasurer. FIRST ROW: Dudley Milward, Ann Chamberlain, Freda Miller, Susan Steele, Charlotte Adams. SECOND ROW: Sarah Jane Byers, Kitty Craig, Betty Burnett, Tay Maxson, Linda Lutes, Mary Elizabeth Wylie, Helen Warren, Ruth Gaitskill, Bethania Smith. THIRD ROW: Mike Flynn, Tim Hanson, Breck Smith, C. V. Ethington, Bob Sprague, John Kaltenbrun, Bill Combs, Joe Curry.



OFFICERS:
Lou F
nie M
Pryor
Bill V

OFFICERS:
Stiv
Ada
Bets
Fran
Patt
take

SOPHOMORE CLASS



OFFICERS: Jack Rusell, President; Nancy Cowden, Vice-President; Mary Frances Moore, Secretary; Libby Lou Honerkamp, Treasurer. FIRST ROW: Caroline Swartz, Bunny Hardford, Judy Gross, Susanne Griffin, Winnie Mauser, Dickie Chamberlain. SECOND ROW: John Luby, Bob Evans, Bobby Reeves, Jeanie Rich, Louise Pryor, Carolyn Stivers, Linda Ethington, Dwainne Harris, Mike Stewart, Bill Warren, Billy Moore, Bucky Harper, Bill Varelles, Carolyn Mansfield, Dill Marr, Don Paris, Rufus Lisle, Jeanne Shaver, Clay Brock.

FRESHMAN CLASS



OFFICERS: William Wood, President; Coley Callaway, Vice-President; Susan Hamilton, Secretary; Melanda Stivers, Treasurer. FIRST ROW: Barbara Rath, Sharon Cornish, Ann Duncan Nave, Susanne Phelps, Sammy Adams, Burton Milward, Roy Bachmeyer, Betty Newbury, Jack Ireland, Lloyd Anderson. SECOND ROW: Betsy Gillis, Lynne Barrett, Michele Evans, Sarah Gaitskill, Linn Melzer, Lee DeJoe, Elaine Irtz, Ellen Clark, Frank Dickey, Mike Cox. THIRD ROW: Joe Goodwin, Karl Eldridge, John Walden, Adrian Wilkes, Robert Pattie, Jessica Paris, Barbara Faulconer, Sam Warren, Glen Shepard, Bill Turnbull. ABSENT when picture taken: Gerard Gerhard.

EIGHTH GRADE



OFFICERS: Phyllis Wall, President; Shelby Kinhead, Vice-President; Frances Jewell, Secretary; Jeannie Miles, Treasurer. FIRST ROW: Dick Eckel, Max Swartz, Ann Price McLean, Susan Gail, Cathy Maxson, Eloise Cox, Edward Gambill, Bill Weisenburg, Sandy Queen. SECOND ROW: Janet Stokes, Sally King, Bill Greathouse, Jack Gurnee, Garland Barr, David Reeves, Andy Armstrong, Joe Miller, Mary Manly. THIRD ROW: Frances Pattie, Jimmy Stapp, Buddy Bishop, Robert Walker, Bill Russell, Bradley Bryant, Daniel Holman, Bettye Rae Cranfill, Susan Jefferson, Pat Witt.

SEVENTH GRADE

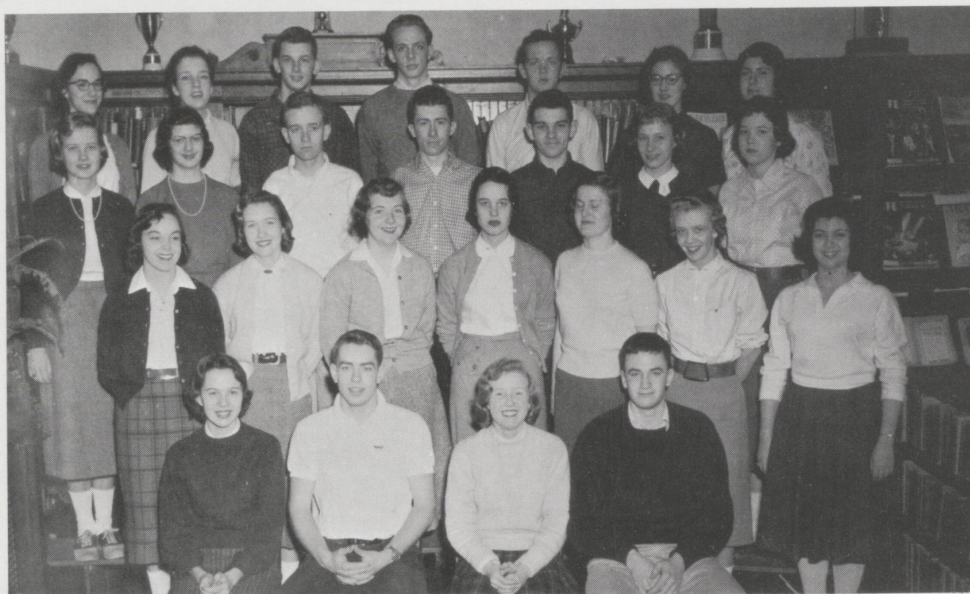


OFFICERS: Charles Mitchell, President; David Porter, Vice-President; Kate Yates, Secretary; Lyle Walker, Treasurer. FIRST ROW: Anne Combs, Sara Thompson, Callie Cowden, Joe Dickey, Skipper Hardford, Dickie Cole, Charmaine Marlowe. SECOND ROW: Carol Bosworth, Emily Thompson, Barbara Walden, Larry Hobbs, Landy Dale, David Switzer, Huston Davis, Judy Roach. THIRD ROW: Joan Pryor, Howard Lusk, Jeannette Dale, Bari Lowenthal, Stewart Yonts, Brint Milward, Richard Wade, Robert Walker, Susanne Ready, Judy Nuckols. ABSENT WHEN PICTURE TAKEN: Don Campbell, Freddy Irtz, Judy Boyd.



ORGANIZATIONS

BETA CLUB



OFFICERS: Puddin Newbury, President; Lanny Cox, Vice-President; Lucy Manly, Secretary; Ernie Clarke, Treasurer. FIRST ROW: Charlotte Adams, Shelia Hargett, Tay Maxson, Lady Greenslit, Elsie Barr, Helen Hamilton, Freda Miller. SECOND ROW: Betty Evans, Helen Warren, Bill Combs, Bradley Switzer, John Howard Williams, Sara Jane Byers, Virginia Prewitt. THIRD ROW: Pegsie Lisle, Lindsay Nunn, Tommy Adams, Charley Turnbull, Chuck Maxson, Malinda Clay, Perry Patterson.



NATIONAL HONOR SOCIETY



Ernie Clarke, Perry Patterson, Lanny Cox, Lindsay Nunn, Bradley Switzer.



MASQUE AND GAVEL



STANDING: Charley Turbull. FIRST ROW: Freda Miller, Joe Curry. SECOND ROW: Kitty Craig, Dudley Milward, Emie Clarke, Bob Sprague, Lindsay Nunn, Lady Greenslit. THIRD ROW: Bradley Switzer, John Howard Williams, Bethania Smith.

STUDENT COUNCIL



FRONT ROW: Clay Brock, Carolyn Mansfield, Ernest Clarke, President; Lanny Cox, Vice-President; Pegsie Lisle, Secretary-Treasurer; Joe Curry. SECOND ROW: David Switzer, Garland Barr, William Wood, Bradley Switzer, Ann D. Nave, Charlotte Adams.

SENIOR HIGH STUDENT GOVERNMENT



Herky Rupp, President; Bill Combs, Vice-President; Lucy Manly, Secretary. FIRST ROW: Perry Patterson, Charles Stewart, Herky Rupp, Bill Combs, Lucy Manly. SECOND ROW: Mike Flynn, Bethania Smith, Winnie Mauser, Billy Moore.

JUNIOR HIGH STUDENT GOVERNMENT



Frank Dickey, President; Robert Walker, Vice-President; Phyllis Wall, Secretary. FIRST ROW: Joe Miller, Frances Jewell, Susan Hamilton, Robert Walker, Frank Dickey, Phyllis Wall, Sammey Adams, Judy Nichols.

SENIOR HIGH PEP CLUB



OFFICERS: P. Lisle, Pres.; B. Evans, V. Pres.; T. Maxson, Secy.; T. Adams, Treas.; T. Hanson, Sgt.-at-Arms.
 FIRST ROW: H. Hamilton, D. Milward, F. Miller, C. Adams, L. Manly, D. Davis. SECOND ROW: L. Pryor, C. Swartz, A. Chamberlain, B. Hartford, J. Gross, C. Stivers, B. Burnett, R. Gaitskill, M. Moore, J. Rich, S. Hargett, L. Lutes, E. Barr, L. Ethington. THIRD ROW: S. Byers, R. Reed, M. Anderson, L. Greenslit, D. Marr, P. Newbury, L. Nunn, J. Shaver, B. Smith, K. Craig, W. Mauser, P. Patterson, L. Honerkamp, C. Mansfield, N. Cowden.
 FOURTH ROW: B. Varellas, D. Chamberlain, C. Brock, B. Moore, R. Lisle, B. Warren, C. Stewart, D. Harris, M. Flynn, B. Combs, W. Haffler, B. Evans, D. Paris, B. Switzer, J. Williams. FIFTH ROW: J. Varellas, B. Reeves, J. Curry, J. Kaltenbrun, J. O'dear, A. Toleman, H. Rupp, B. Sprague, B. Yousey, C. V. Ethington, C. Tumbull, B. Taylor, E. Clarke, L. Cox, C. Maxson.

JUNIOR HIGH PEP CLUB



FIRST ROW: D. Cole, G. Gerhard, G. Barr, C. Cowden, S. Thompson, J. Roach, S. Adams, H. Davis, C. Marlowe, L. Hobbs, E. Gamble, M. Swartz, D. Switzer, S. Hartford. SECOND ROW: S. Kinkead, K. Yates, D. Porter, R. Walker, F. Irtz, J. Ireland, L. Walker, A. Nave, E. Clark, M. Stivers, M. Manly, B. Newbury, J. Pryor, E. Thompson, C. Bosworth, A. Combs. THIRD ROW: R. Wade, H. Lusk, S. Ready, R. Bachmeyer, D. Reeves, S. Phelps, S. Cornish, S. Gaitskill, L. Melzer, E. Irtz, L. Joe, S. Jefferson, S. King, K. Maxson, A. McLean, S. Queen. FOURTH ROW: J. Boyd, J. Gurnee, J. Miller, A. Armstrong, B. Greathouse, F. Pattie, P. Wall, M. Evans, B. Rath, L. Barrett, P. Witt, B. Bishop, S. Yants, J. Stokes, S. Jefferson, S. Gale, F. Jewell. FIFTH ROW: C. Callaway, B. Milward, B. Russell, B. Gillis, J. Miles, J. Paris, J. Walden, K. Eldridge, B. Tumbull, J. Goodwin, S. Hamilton, B. Faulconer, S. Warren, G. Shepherd, B. Bryant, R. Walker, W. Wood, L. Anderson.

Y-TEENS



OFFICERS: President, Perry Patterson; Vice President, Betty Evans; Secretary, Helen Hamilton; Treasurer, Pegsie Lisle; Inter-Club Council, Tay Maxson. FIRST ROW: Judy Gross, Ann Chamberlan, Elaine Irtz, Lee DeJue, Bunny Hartford, Puddin Newbury, Sarah Gaitskill, Susanne Phelps, Carolyn Swartz, Ellen Clarke, Betty Burnett, Betty Newbury, Dudley Milward, Andy Nave, Linda Lutes, Charlotte Adams, Freda Miller. SECOND ROW: Elsie Barr, Melinda Stivers, Lynn Barrett, Mary Frances Moore, Michele Evans, Rosie Pryor, Sarah Jane Byers, Betsy Gillis, Carolyn Stivers, Jeanie Rich, Mary Elizabeth Wylie, Shelia Hargett, Lucy Many, Doty Davis. THIRD ROW: Lady Greenslit, Carolyn Mansfield, Mary Anderson, Rae Reed, Jean Shaver, Lindsay Nunn, Susan Hamilton, Barbara Faulconer, Bethania Smith, Nancy Cowden, Jessica Paris, Kitty Craig, Linda Ethington, Libby Honerkamp.



BASKETBALL TEAM



FIRST ROW: Perry Patterson, Lynne Barrett, Shelia Hargett, Betsy Gillis. SECOND ROW: Lee DeJue, Ellen Clarke, Lady Greenslit, Barbara Faulconer. THIRD ROW: Elsie Barr, Susan Hamilton, Tay Maxson.

SWIMMING TEAM



FIRST ROW: Rosie Pryor, Jeanie Rich, Lynne Barrett, Betty Newbury, Betsy Gillis, Susanne Phelps. SECOND ROW: Ellen Clarke, Carolyn Mansfield, Carolyn Stivers, Perry Patterson, Betty Evans, Melinda Stivers.



ACTIVITIES



etsy

ANNUAL STAFF



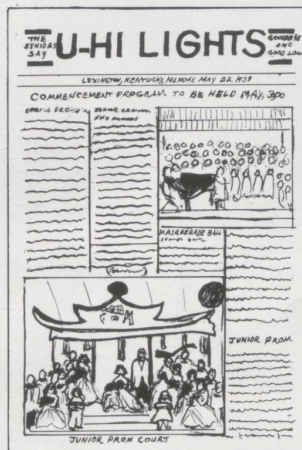
Editor. Betty Evans
 Assistant Editor. Willie Newbury
 Feature Editor. Allen Tolman
 Assistant Feature Editor. Bill Bryan
 Sports Editor. Bradley Switzer
 Assistant Sports Editor. Chuck Maxson
 Business Editor. Lindsay Nunn
 Advertising Editor. Lucy Manly
 Circulation Editor. Rae Reed
 Art Editor. Louise Spinney
 Assistant Art Editor. Bill Yousey
 Photographers. Ernie Clarke
 Bradley Switzer
 Typists. Shelia Hargett
 Lady Greenslit
 Lucy Manly





U-HIGHLIGHTS STAFF

Editor. Lady Greenslit
 Assistant Editor. Kitty Craig
 Production Manager. Lucy Manly
 News Editor. Elsie Barr
 Assistant News Editor. Helen Warren
 Feature Editor. Virginia Prewitt
 Assistant Feature Editor. Nancy Cowden
 Make-up Editor. Charlotte Adams
 Assistant Make-Up Editor. Mary Anderson
 Art Editor. Dudley Milward
 Assistant Art Editor. Winnie Mauser
 Exchange Editor. Perry Patterson
 Sports Editor. John Howard Williams
 Assistant Sports Editor. Tommy Adams
 Jr. High Editor. Betsy Gillis
 Jr. High Sports. Burton Milward
 Photographer. Bill Turnbull, and Tim Hanson
 Typists. Judy Gross, Freda Miller, Susanne Phelps, Louise Pryor



GLEE CLUB



Christmas Program



Spring Program

LITTLE CHOIR



FRONT ROW, Left to Right: Mary Elizabeth Wylie, Bunny Hartford, Ellen Clark, Ann Chamberlain, Charlotte Adams, Sara Jane Byers, Tay Maxson, Lady Greenslit, & Shelia Hargett. BACK ROW: Mary Frances Moore, Rae Reed, Lindsay Nunn, Puddin Newbury, Linda Ethington, Bethania Smith, Betty Evans, Nancy Cowden, & Jeanie Rich. Absent when picture was taken: Margaret Ann Wyse, Susan Steele, Ruth Gaitskill, Malinda Clay, Virginia Prewitt, Betty Burnnett, & Carolyn Mansfield.

DOUBLE TRIO



LEFT to RIGHT: Ruth Gaitskill, Mary Frances Moore, Puddin Newbury, Virginia Prewitt, Lady Greenslit, and Shelia Hargett.

This page is sponsored by HARGETT CONSTRUCTION COMPANY

BOYS' QUARTET



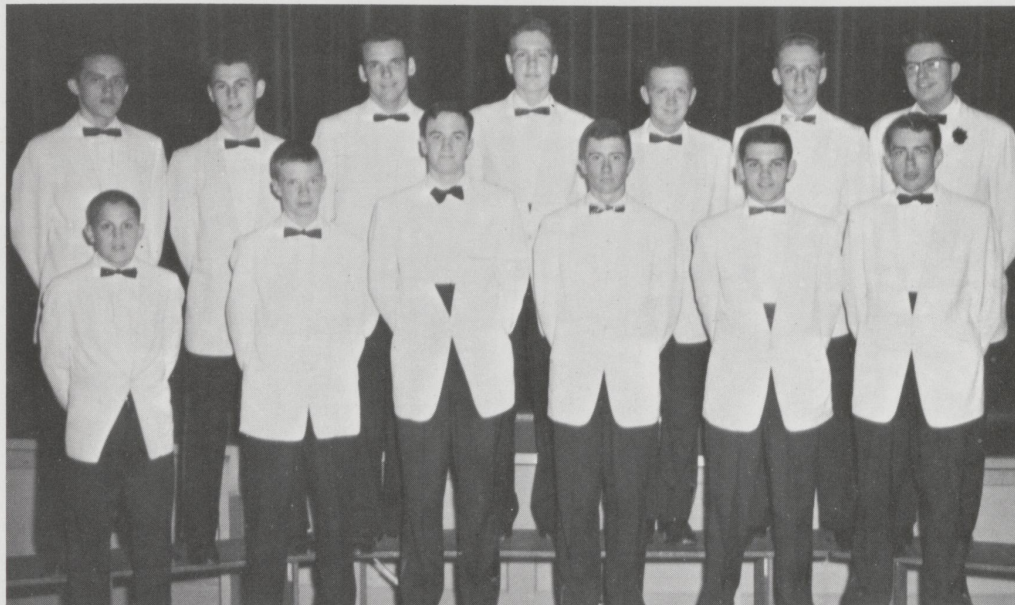
LEFT to RIGHT: Ernie Clarke, Bradley Switzer, Lanny Cox, Bill Yousey.

BAND



FRONT ROW, Left to Right: Susan Gail, William Wood, David Switzer, Glenn Sheperd, Lyle Walker, Stewart Yonts, Dudley Milward, and Frank Dickey. SECOND ROW: Mary Elizabeth Wylie, Bradley Switzer, Joe Miller, Freddy Irtz, Carolyn Swartz, Bill Yousey, and John Howard Williams and Howard Lusk. THIRD ROW: Lanny Cox and Dicky Cole. FOURTH ROW: Mike Cox and Donald McKelvey.

BOYS' GROUP



FRONT ROW: Sammy Adams, Linn Melzer, Ernest Clarke, Bradley Switzer, John Howard Williams, Lanny Cox. SECOND ROW: Charles Stewart, Mike Flynn, Alan Tolman, Bill Turnbull, Chuck Maxson, Charley Turnbull, William Yousey.

DOUBLE QUARTET



Ernest Clarke, Bradley Switzer, Susan Steele, Ruth Gaitskill, Lady Greenslit, Shelia Hargett, William Yousey, Lanny Cox.

DRAMA FESTIVAL PLAY



FIRST ROW: Lanny Cox, Ernie Clarke, Joe Curry, Bob Sprague. SECOND ROW: Bradley Switzer, Bethania Smith, Charley Turnbull, Bill Yousey.

SPEECH CLASS PLAY



FIRST ROW: Dudley Milward and Susan Steele. BACK ROW: Tommy Adams, Bill Bryan, Rae Reed, John Kaltenbrun.

SENIOR PLAY



Lady Greenslit, Bradley Switzer, Lindsay Nunn, Charley Turnbull.

"BEST FOOT FORWARD"

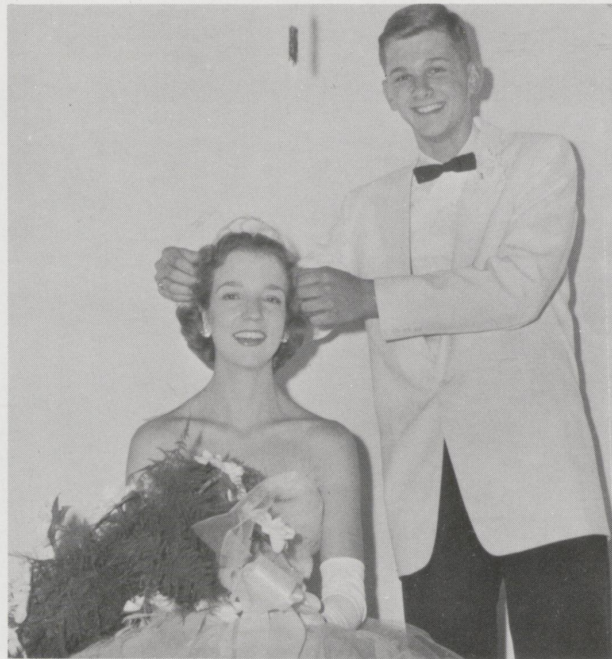


This page is sponsored by SWITZER-WILLING CONSTRUCTION CO.

JUNIOR PROM COURT



Members of the Court are, Bob Sprague and Sarah Jane Byers, Mike Flynn and Tay Maxson, Wayne Haffler and Dotty Davis, Bill Combs and Charlotte Adams, all Juniors: Betty Maxson, Queen, and Tommy Adams, her escort: Shelia Hargett and Chuck Maxson, Rae Reed and Bill Taylor, Lady Greenslit and Lanny Cox, Betty Evans and Ernie Clarke, Rory Flynn, Scroll bearer and Judy Porter, crown bearer.



Tommy Adams, President of the Junior Class, crowns Lindsay Nunn Queen of the 1958 Junior Prom.



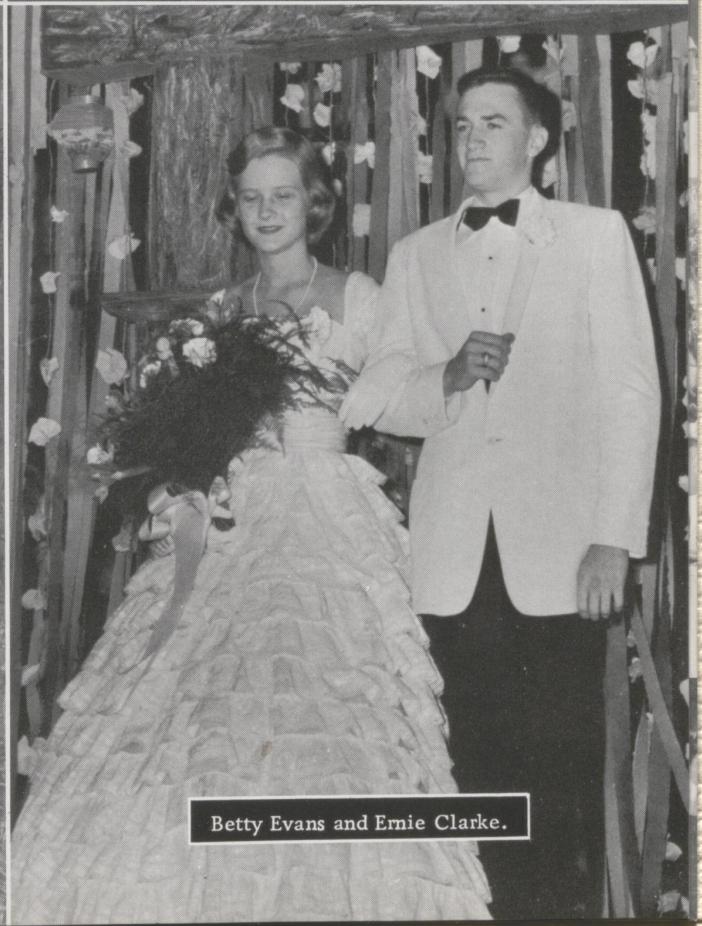
Lady Greenslit and Lanny Cox.



Rae Reed and Bill Taylor.



Shelia Hargett and Chuck Maxson.



Betty Evans and Ernie Clarke.

CONVOCAATION COMMITTEE



FRONT ROW, Left to Right: Mr. Burkeen, Miss Carl, Mrs. Osborne, Freda Miller, Charley Turnbull. BACK ROW: Lyle Walker, Shelby Kinkead, Sam Warren, Rae Reed, Bob Sprague, Don Paris, Carolyn Stivers, Betty Newbury, Ann Combs.

SOCIAL COMMITTEE



FRONT ROW, Left to Right: Billy Moore, Linda Lutes, Dill Marr, C. V. Ethington. Absent when picture was taken: Virginia Prewitt, John Howard Williams, Mr. Kemper.



SPORTS



SENIOR
HIGH
CHEERLEADERS

Helen Warren, Carolyn Mansfield, Mary Elizabeth Wylie, Carolyn Stivers, Linda Lutes, Judy Gross, Lucy Manly.

JUNIOR
HIGH
CHEERLEADERS



Melinda Stivers, Pat Witt, Barbara Faulconer, Lynne Barrett, Betty Newbury, Mary Manly, Ann Price McLean.

SENIOR HIGH "PURPLES"



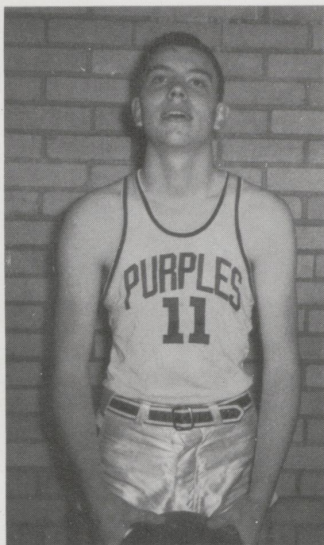
BACK ROW, L. to R.: Dick Chamberlain, Mgr. Bill Taylor, Billy Moore, C. V. Ethington, Herky Rupp, Bob Sprague, Allen Tolman, Bill Warren, Ernest Clarke, Jack Russell, Rufus Lisle, Mgr. FRONT ROW: Bobby Reeves, Robert Walker, Bradley Switzer, Clay Brock, Chuck Maxson, Don Paris, Lanny Cox, Jim Varellas.

JUNIOR HIGH "PURPLES"

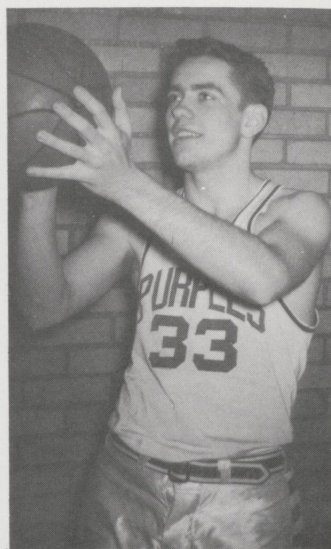


BACK ROW, L. to R.: Robert Walker, William Wood, John Walden, Sam Warren, Karl Eldridge, Glen Shepard, Bradley Bryant, Buddy Bishop, Bill Russell. FRONT ROW: Lyle Walker, Sammy Adams, Huston Davis, Garland Barr, David Switzer, Joe Miller, Bill Greyhouse.

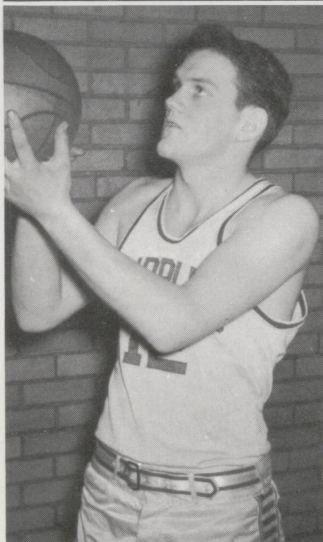
"MAINSTAYS"



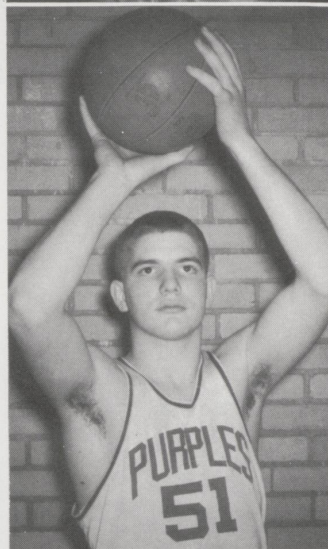
Herky Rupp



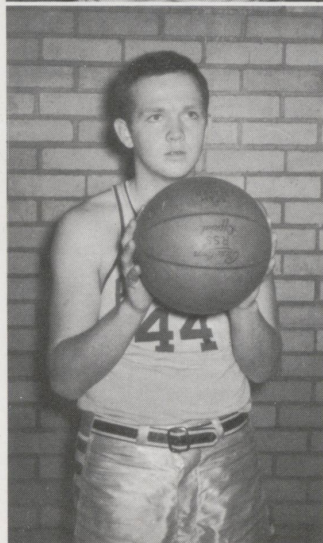
Lanny Cox



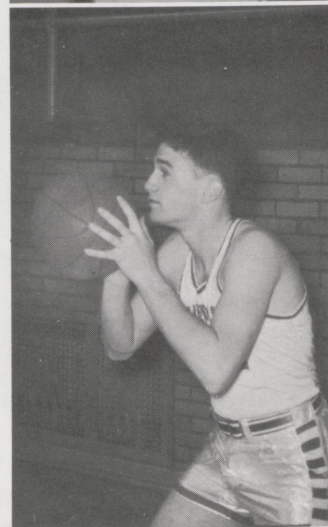
Bill Taylor



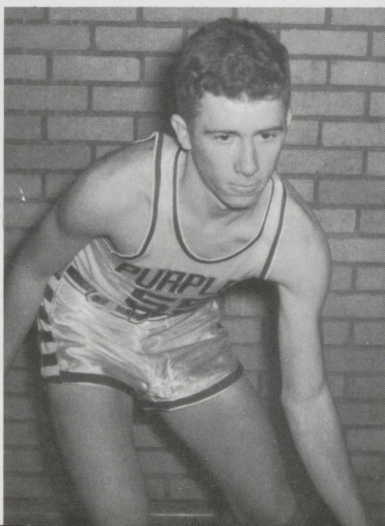
Bob Sprague



Chuck Maxson



Ernest Clarke

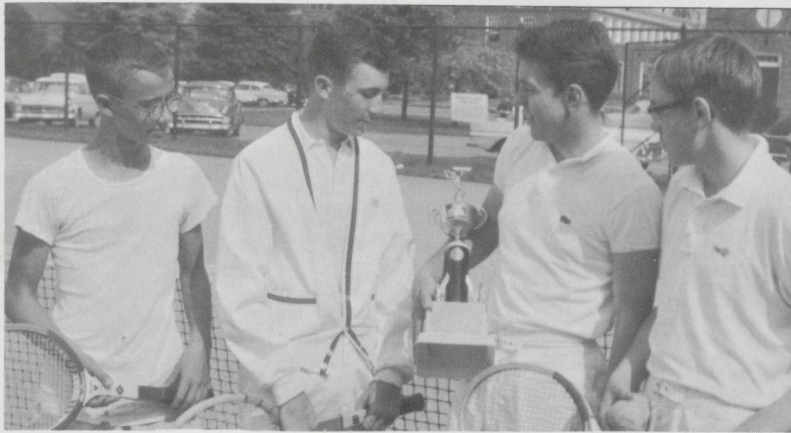


Bradley Switzer



BASEBALL TEAM

FIRST ROW, L. to R.: Linn Melzer, Lanny Cox, John Howard Williams, Bradley Switzer, Glen Shepherd, Robert Walker. SECOND ROW: David Switzer, John Luby, Don Paris, Bob Evans, Jim Varellas, Lyle Walker. THIRD ROW: Karl Eldridge, Bill Yousey, Herky Rupp, Bill Warren, Bill Bryan.



TENNIS TEAM

L. to R.: Buddy Bishop, Bradley Switzer, Lanny Cox, Mike Cox. Absent: Ernest Clarke.

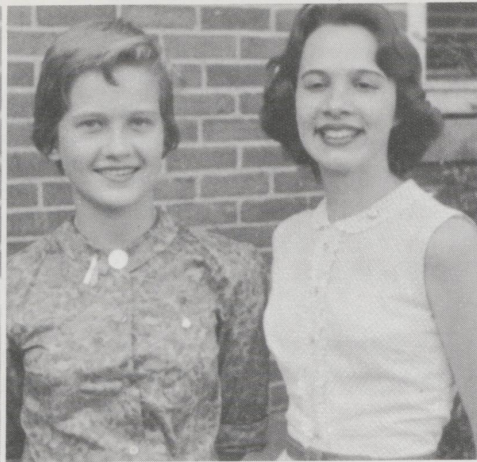


SWIMMING TEAM

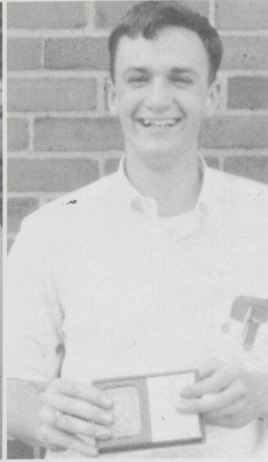
FIRST ROW, L. to R.: David Reeves, Coley Callaway, Bobby Reeves. SECOND ROW: Johnny Walden, Bradley Switzer, John Howard Williams, Richard Wade. THIRD ROW: Jack Miller, Coach; Jack Russell, Charles Stewart, Dwaine Harris, Rufus Lisle, Ernest Clarke.



National Speech Award:
John H. Williams.



Marguerite McLaughlin Yearbook
Award: Betty Evans and Puddin New-
bury.



Bausch and Lomb
Science Award;
Kiwanis Cup; Junior
League Music Award:
Ernest Clarke.

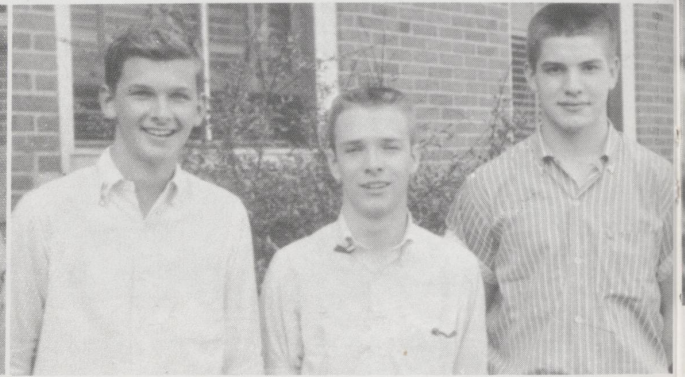


D.A.R. Good Citizen-
ship Award: Perry
Patterson.

AWARDS



Beta Club Initiates: Margaret Anne Wyse, Kitty Craig,
Carolyn Mansfield, Dill Marr, Rufus Lisle, Rae Reed,
Linda Lutes, Joe Curry, Wayne Hafler, Bill Yousey,
Ebert Warren, Herky Rupp, John Kaltenbrun.



Boys' State: Tommy Adams, Wayne
Hafler, Bob Sprague.



National French Awards: Elsie Barr, Ernest
Clarke, Dudley Milward.



Masque and Gavel: Margaret Anne
Wyse, Carolyn Mansfield, Rae Reed,
Tim Hansen.



National Honor Society: Tommy
Adams, Betty Evans, Pegsie Lisle,
Freda Miller.



SENIOR ACTIVITIES

izen-
ry

my
sle,

CLASS PROPHECY

On May 30, 1985, the confusion in Walter Reed Memorial Hospital becomes utter. Aside from the fact that Rae Reed has been a nurse in Walter Reed for the past two years, discounting the overly obvious sounds of organ music (played by Margaret Ann Wyse) and the singing of Shelia Hargett Molloy, which emits day and night from the boiler room, Charley Turnbull and the red-headed bombshell just crashed through the imposing front doors in a Hartfordshire—a new type of sports car designed especially for Mr. Turnbull by Allen Tolman. Charley immediately crawled out of the car, his perennial "cathat" on the back of his head, and begins berating Allen for "bolting where he should have screwed," and screaming for Johnny Odear, the master mechanic. In the meantime, Lucy leaves in search of someone with whom she can "have a few laughs."

Oddly enough, the first person whom she meets is Admiral L. G. Cox, Jr. But Lanny is so overly-nervous and frustrated that he is unable to carry on an intelligible conversation, for he is waiting for his sixth child, hoping it will not be another "Lady." However, the Admiral is not alone in the room. A medical missionary is passively waiting for an audience with Dr. E. K. Warren, a scientist, about a mosquito which she presently has clutched to her chest. The missionary, a Miss Perry Patterson, has just returned after eighteen years from Libya and is speaking in a broken Afro-English dialect with that eminent novelist, Miss Lindsay Nunn, (whose most famous work, *THE ACTING ABILITY OF THE WATER-FLEA*, is now available at your neighborhood bookstore for \$4.98.)

The ceaseless music (?) from the boiler room is suddenly drowned out. Pandemonium is reigning in one of the upstairs corridors. Dr. Bradley Switzer and Dr. Charles Stewart are embroiled in a caustic argument with four other men. Apparently the argument started when Bill Bryan attempted to fit a pair of plates in the mouth of a rather unruly patient, Mr. Bill Yousey, the lead in the Wortburg Barbershop Quartet. At the same time the two doctors aforementioned are attempting to extricate the thermometer that orderly Ernest Clarke stuffed down the patient's throat. Ernie, the unorderly orderly, is giggling in the corner of the room, tremendously enjoying the entire situation.

To make matters worse, at the crux of the argument, a scuff-scuff can be heard journeying down the hall, and who should shamble in but Charles Maxson. Chuck as he is known to the members of his inner intellectual circle—begins attempting to explain the current trends in the clothes business, but has little success. The noise is so deafening in the crowded room that it can be heard over in the maternity ward, where Malinda Clay is submerged in a tangle of wall-paper and paste. Much against her husband's (Dr. W. L. Scott) wishes, she is carrying out her life's ambitions, i.e., she is decorating Walter Reed's baby nursery. Luckily for Malinda, a basketball coach (Herky Rupp) with a yardstick happens to be in the ward scouting for long-legged babies that might become future basketball stars. Surely one can find a peaceful corner in this hospital; perhaps the laboratory is a bit calmer.

Indeed, in the first floor laboratory, Jim Varellas, the nation's Secretary of Agriculture, is quietly discussing the new farm-bill with Helen Hamilton, who is waiting for the outcome of a series of tests that are being made on her turtle, who is suffering with a severe ailment. But Walter Reed cannot remain calm for more than fifteen minutes on this memorable day. The air is filled with the piercing wail of a siren and the squeal of tires as an ambulance rolls up to the emergency door. Bill Taylor jumps out of the drivers seat and pulls out the stretcher. Oh no, It's Miss Peck! Bill is explaining to an intern that as Miss Peck was sailing down the Nile River, a carnivorous crocodile with an appetite that can only be appeased by devouring people from "God's Chosen Country" made an attempt on our beloved Miss Peck's life. Luckily, she got away with only a slight abrasion on her leg, and luckily (?) Bill Taylor was available to whisk her to the hospital. After her wound is cared for, Miss Peck is wheeled to her room. Virginia Prewitt (who just happens to be in Maryland to watch her horse try for a Preakness victory) and Mary Anderson come in to visit her, reciting "Wash Ad Jeff Mad . . ." Just as they reach "Gar Ar Cleve," John Howard Williams, the resident minister bursts in, amazed and ecstatic to see Miss Peck.

Pegsie Lisle, eternally peppy, is cheering up two patients. These patients have accomplished literally nothing in the past twenty-seven years. Their illness is baffling because of "annual sickness."

Walter Reed Memorial Hospital is like a mad-house. Oops, the picture is now complete. Louise Spinney, although late, is surprisingly enough present. Let us leave the inmates and hope the walls remain standing.

SENIOR WILL

- I, Mary Anderson, leave my Saturday nights to Linda Lutes.
- I, Bill Bryan, leave one pair of worn-out shoes and my deepest sympathy to Mike Flynn.
- I, Ernest Clarke, leave my whistler to Miss Peck.
- I, Malinda Clay, leave my parties to anyone who has the nerve to take them over.
- I, Lanny Cox, leave with Lady, only to leave her shortly.
- I, Betty Evans, leave the phone in the office back to Mrs. Lusk.
- I, Lady Greenslit, leave the expense of this year's U-Hi Lights to whoever has enough money to pay for it.
- I, Helen Hamilton, leave my motor to anyone who can manage it.
- I, Shelia Hargett leave my ability to sing on pitch to Mary Frances Moore.
- I, Pegsie Lisle, leave my poor school spirit to Mr. Gardner.
- I, Lucy Manly, leave my office as President of the Confederacy to Charlotte Adams.
- I, Chuck Maxson, leave-alone-unfortunately.
- I, Puddin Newbury, leave the popcorn machine to anyone who can get it fixed.
- I, Lindsay Nunn, leave my ability to go out for a cigarette without getting caught to anyone who can find my hiding places
- I, John Odear leave Mike Stewart to Miss Peck.
- I, Perry Patterson, leave MON PETIT BEBE A Barbara.
- I, Virginia Prewitt, leave for the races.
- I, Rae Reed, leave my dislike for brown-nosing to Tommy Adams.
- I, Herky Rupp, leave my size 13 basketball shoes to Gerard.
- I, Louise Spinney leave my ability to skip school to Bob Sprague.
- I, Charles Stewart, am keeping everything for myself.
- I, Bradley Switzer, leave for the army.
- I, Bill Taylor, leave my good grades to anyone who wants them.
- I, Allen Tolman, leave my two points to Bill Warren.
- I, Charley Tumbull, leave my numerous explosions in Chemistry to the holes in the desk.
- I, Jim Varellas, leave my good-looking brother to all the sophomore girls.
- I, Ebert Warren, leave my ability to get good marks to my brother, Bill.
- I, John Howard Williams, leave after 13 years-its about time.
- I, Margaret Ann Wyse, leave my temper, sarcasm, and originality to Susan Steele.
- I, Bill Yousey, leave my cruelty jokes to Mary Elizabeth Wylie.

CLASS



First Grade



Shelia's coke party, Fourth grade



Trip to Cathedral Domaine, Fifth Grade



Sixth Grade Play,
"Cinderella"

HISTORY

Helen Hamilton's Luncheon, Seventh Grade



Eight Grade



Trip to Mamouth cave,
Tenth Grade



Christmas dance, Twelfth Grade



BACCALAUREATE

Our Baccalaureate was held at the First Presbyterian Church on Mill Street on May 25, 1958. Dr. William V. Gardner officiated.



SENIOR BREAKFAST

Our senior breakfast was given by the P.T.A. at the home of Mr. and Mrs. R. Lisle on May 30, 1958. The senior class presented Miss Anna B. Peck, their class sponsor, with a television set.





For the 1958 Commencement, the Rev. Robert Estill gave the Invocation and the Benediction. Dr. Lunger, President of Transylvania was introduced by Dr. Lyman Ginger as guest speaker. After the speech, Dr. Cierley presented the Diplomas to the graduating class.

*The Senior Class
of
University High School
announces Commencement Exercises
Friday evening, May thirtieth
Nineteen hundred fifty-eight
eight o'clock
High School Auditorium*

Ernest Clarke entertained the graduates and the faculty at his home after commencement. Miss Peck and Miss Anderson served the refreshments. John Howard Williams then showed the class movies.



SENIOR DIRECTORY

Anderson, Mary	139 Chenault Road	2-1627
Bryan, Bill	2041 Dellwood Drive	2-6559
Clarke, Ernest	201 Chinoe Road	5-5253
Clay, Malinda	221 South Ashland	2-0163
Cox, Lanny	119 Waller Avenue	2-5437
Evans, Betty	1626 Fincastle Road	2-0633
Greenslit, Lady	Paris Pike	5-1585
Hamilton, Helen	422 Dudley Road	2-1290
Hargett, Shelia	204 Culpepper Drive	4-4480
Lisle, Pegsie	221 Holliday Road	4-2205
Manly, Lucy	419 Holliday Road	2-1132
Maxson, Chuck	1066 Lakewood Drive	5-0915
Newbury, Puddin	1747 Woodlark Avenue	4-0512
Nunn, Lindsay	517 Ridge Road	2-9722
Odear, Johnny	231 Queensway Drive	2-2413
Patterson, Perry	Parkers Mill Road	4-4745
Prewitt, Virginia	Rt. #4, Haley Pike	4-5105
Reed, Rae	815 West Cooper Drive	4-0986
Rupp, Herky	175 Eastover Drive	2-8506
Spinney, Louise	203 Grosvenor	2-8157
Stewart, Charles	832 Tremont Avenue	4-0473
Switzer, Bradley	142 Westgate Drive	2-8285
Taylor, Bill	Deepwood Drive	4-3778
Tolman, Allen	239 Tahoma Road	4-1069
Turnbull, Charley	Antioch Road	4-5574
Varellas, Jimmy	Rt. #1, Georgetown, Ky.	443W
Warren, Ebert	712 Berry Lane	5-5282
Williams, John Howard	1212 Eldermere Road	3-2576
Wyse, Margaret Anne	Versailles Road	5-1804
Yousey, Bill	411 Aylesford Place	5-0912

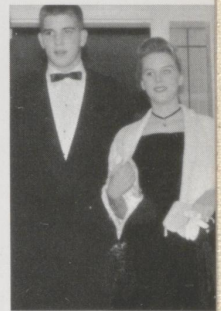


CASSELLS PHARMACY

JUST BEHIND CENTRAL BANK
ON N. UPPER

WE DELIVER Dial 2-3434

WE FILL ALL DOCTOR'S PRESCRIPTIONS



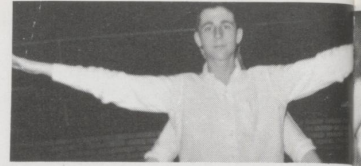
"A FRIEND"

LOVELL & HART CONSTRUCTION COMPANY

Circle Road

2-4519





YOU CAN HELP LEXINGTON
SOLVE ITS TRAFFIC AND
PARKING PROBLEMS

SHOP IN

CHEVY CHASE VILLAGE

BAYNHAM'S

CONVENIENT SHOPPING —
CONVENIENT PARKING



LET
JEAN SARDOU PORTRAITS
RECORD ALL THE IMPORTANT
EVENTS IN YOUR LIFE

YOUR OFFICIAL PHOTOGRAPHER

JEAN SARDOU STUDIO

THIRD FLOOR
WOLF WILES

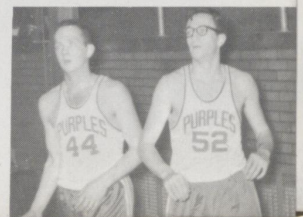
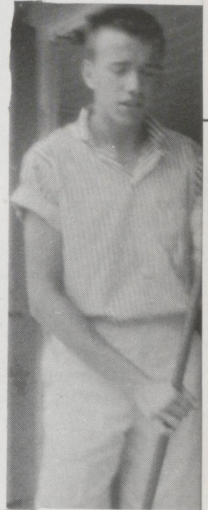


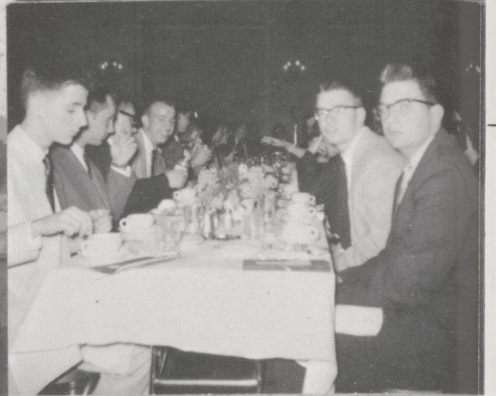
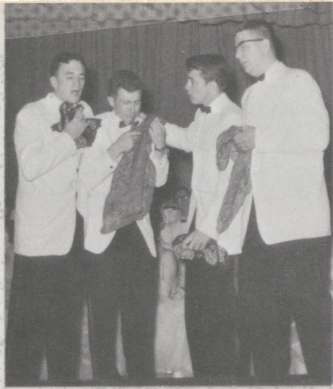


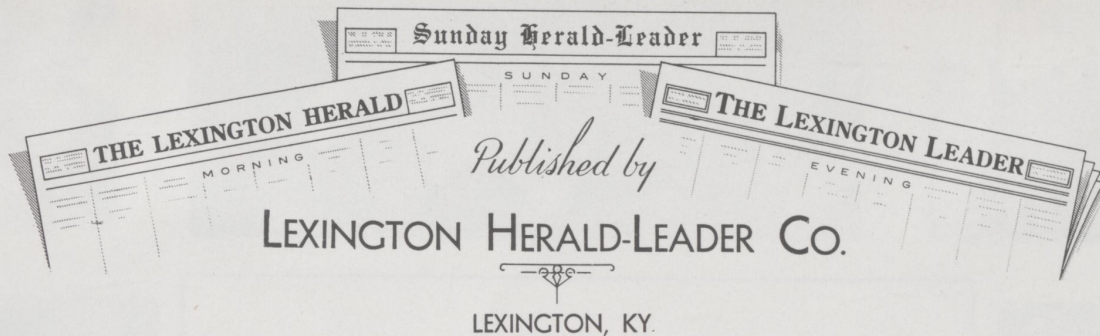
BEST WISHES

FROM

A FRIEND







PATRONS

MR. & MRS. RAYMOND ANDERSON
MRS. J. R. BUSH
MR. & MRS. ERNEST CLARKE, JR.
MR. & MRS. MATT M. CLAY
MRS. VIRGINIA B. COX
DR. & MRS. O. T. EVANS
MR. & MRS. H. V. GREENSLIT
MR. & MRS. BROOKS HAMILTON
MR. & MRS. R. E. HARGETT
MR. & MRS. RUFUS LISLE
MR. & MRS. DAVID MANLY
MR. & MRS. CHARLES MAXSON
MR. & MRS. EDWARD NEWBURY
MR. & MRS. C. M. NEWTON
MR. & MRS. GILMORE NUNN
MRS. BISHOP ODEAR

MR. ROBERT ODEAR
MR. & MRS. JAMES A. PATTERSON
MR. & MRS. R. D. PREWITT
MR. & MRS. R. B. REED
MR. & MRS. A. F. RUPP
MRS. EVA LOVE SPINNEY
MRS. JANE STEWART
MR. & MRS. J. F. SWITZER
MRS. N. POWELL TAYLOR
MR. & MRS. W. A. TOLMAN
MR. & MRS. EDWARD R. TURNBULL
MR. & MRS. JAMES VARELLAS
MR. & MRS. EBERT K. WARREN
MR. & MRS. HOWARD WILLIAMS
MR. & MRS. HARRY WYSE
MR. & MRS. WILLIAM YOUSEY

COMPLIMENTS OF

SCRUGGS and HAMMOND



BEST WISHES

FROM THE

LOOM AND NEEDLE

