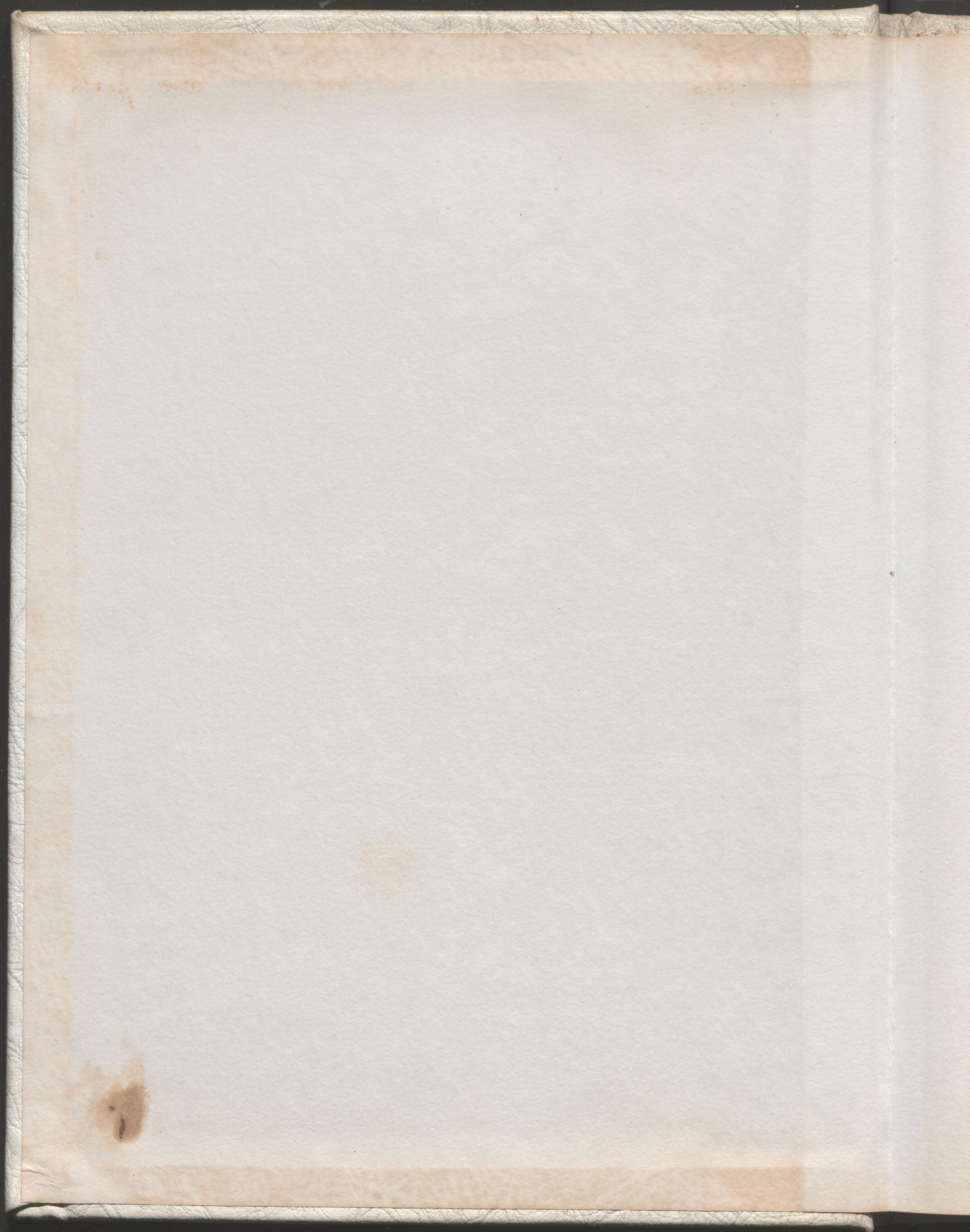
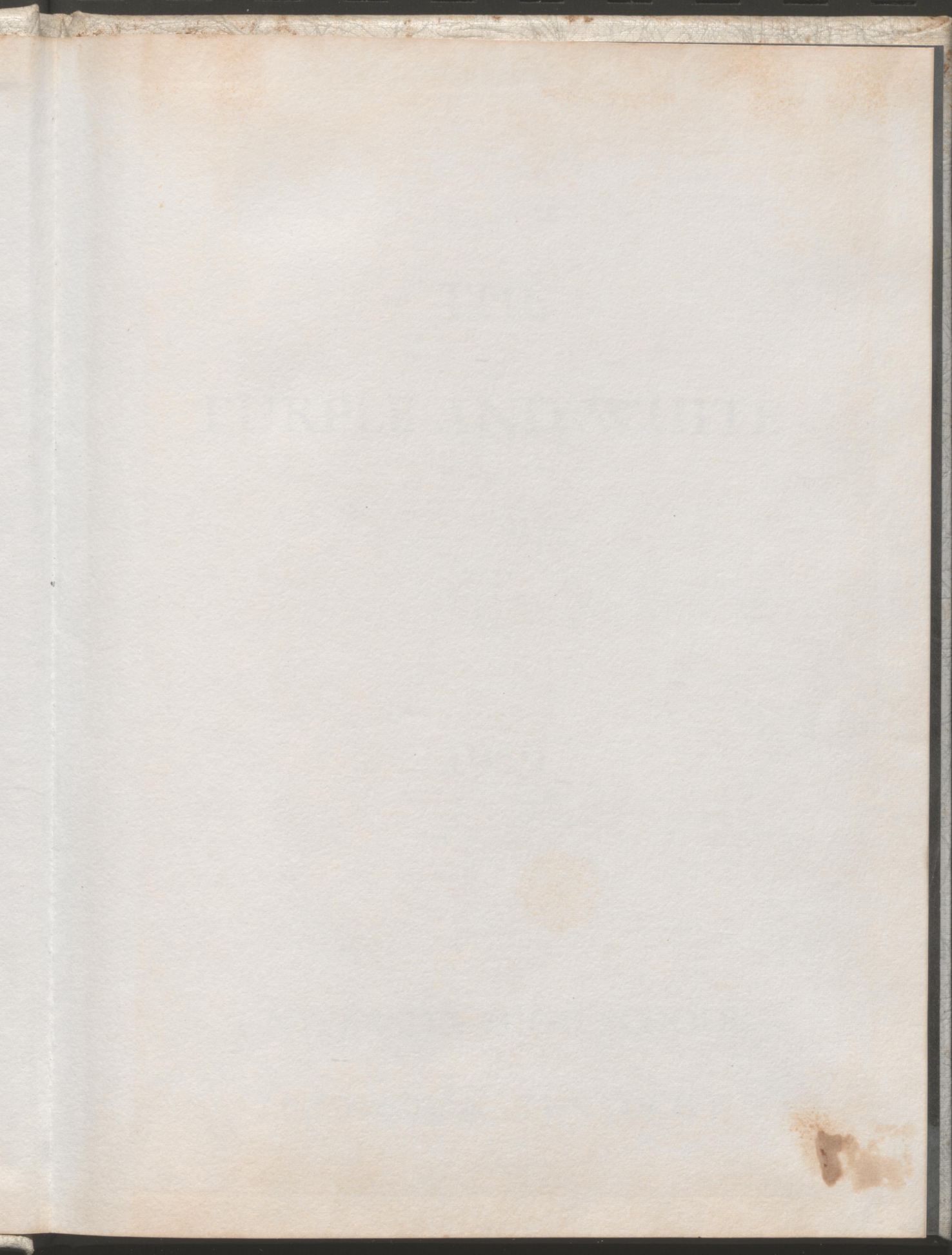
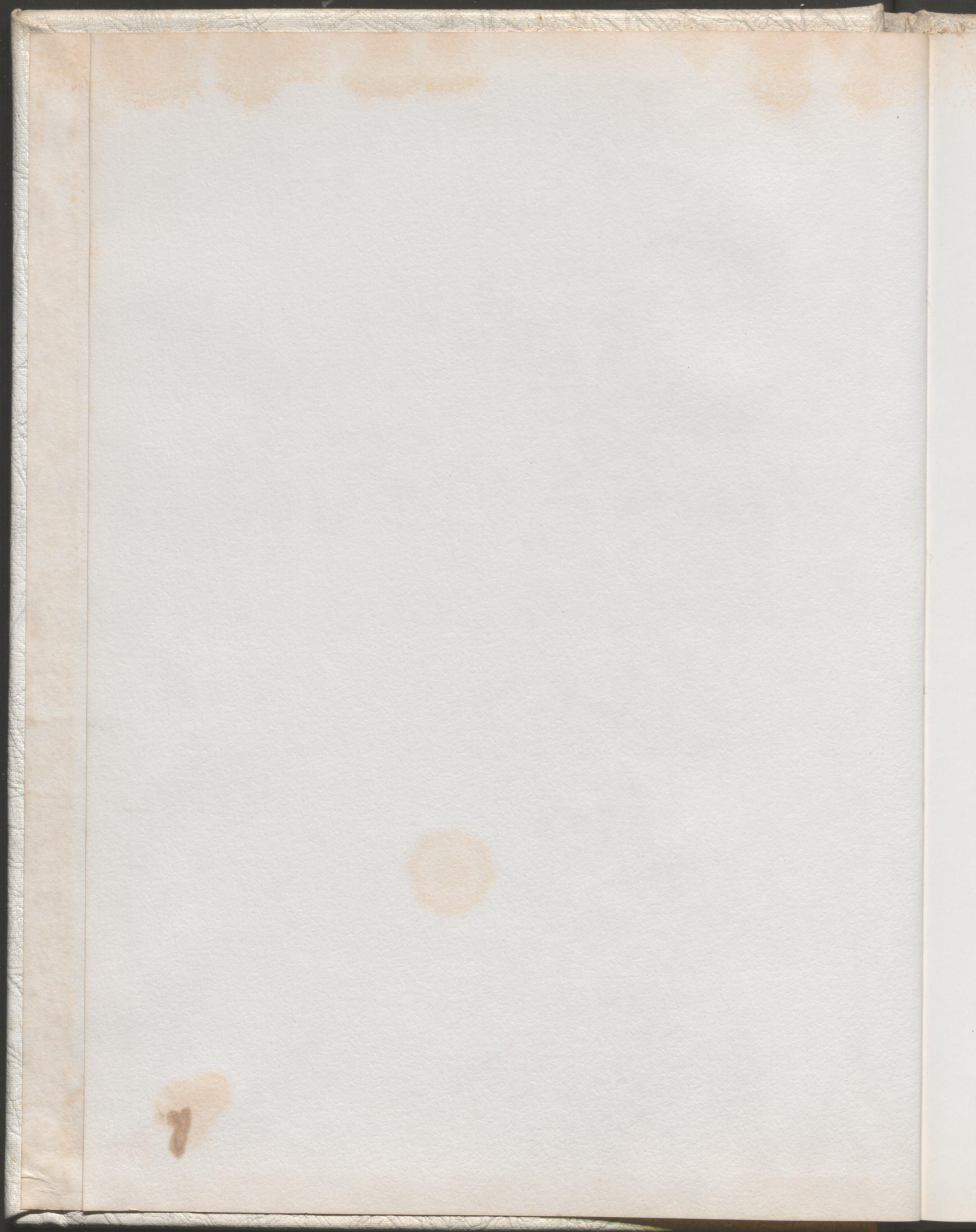




1959





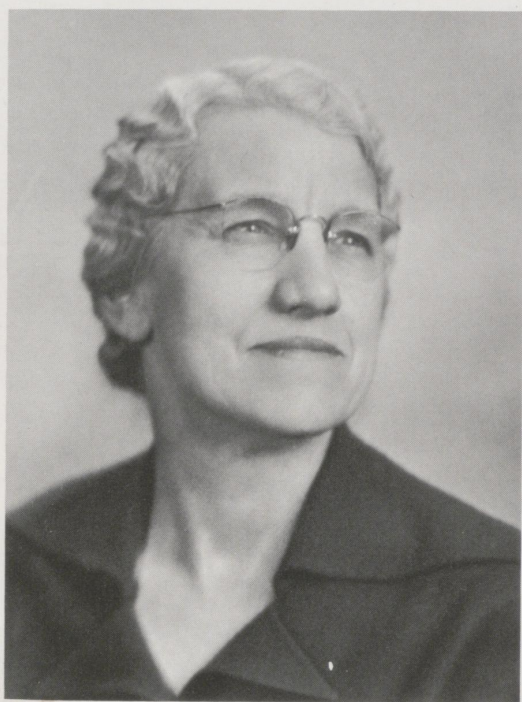


THE  
PURPLE AND WHITE

1959

UNIVERSITY HIGH SCHOOL  
LEXINGTON, KENTUCKY

## DEDICATION

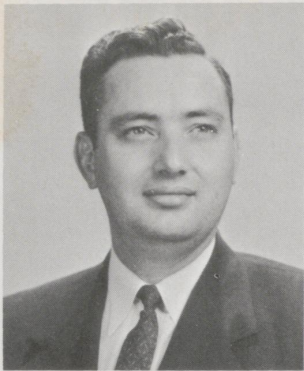


To Miss Anna Peck, in remembrance of her faithfulness and love for the school, and to Dr. Erwin Sasman, who, through his unflinching willingness to help us, has earned our highest esteem, we, the Class of 1959, dedicate the Purple and White.

# FACULTY



Faculty Advisory Council



EMMETT D. BURKEEN  
Speech and Psychology  
Murray State College B.S.  
University of Kentucky M.A.



ALMA VIRGINIA CARL  
Seventh Grade  
University of Kentucky B.A.  
University of Kentucky M.A.



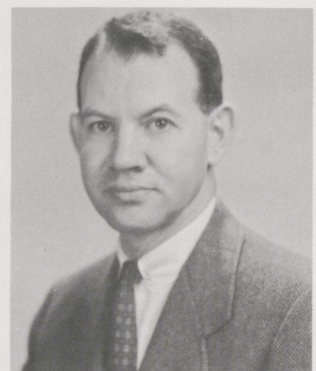
DOLORES S. CHEEK  
Typing  
University of Kentucky B.S.  
University of Kentucky M.A.



HAZEL CHRISMAN  
English  
Berea College B.A.  
University of Kentucky M.A.



ELEANOR EVANS  
Latin and French  
University of Alberta B.A.  
University of Oregon M.A.



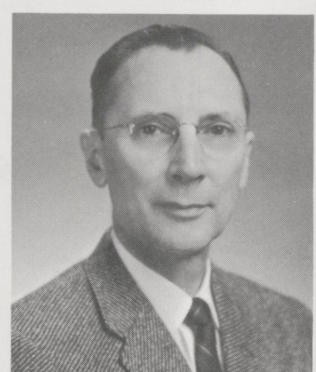
JESS GARDNER  
Gen. Math, Gen. Science,  
Driver Training.  
University of Kentucky A.B.  
University of Kentucky M.A.



RUTH HOPE HAINES  
Art  
Temple University B.S.  
Columbia University M.A.



EUGENE HUFF  
Athletics  
Wofford College A.B.  
University of Tennessee M.S.



DURBIN COLLINS KEMPER  
Science  
Georgetown College B.S.  
University of Kentucky M.A.





RUTH COLLINS OSBORNE  
Vocal Music  
Georgetown College B.A.  
University of Kentucky M.A.



ANNA BROWNING PECK  
Social Studies  
University of Kentucky B.A.  
University of Kentucky M.A.



EUCLID LEON PORTER  
Mathematics  
Georgetown College B.A.  
University of Kentucky M.A.



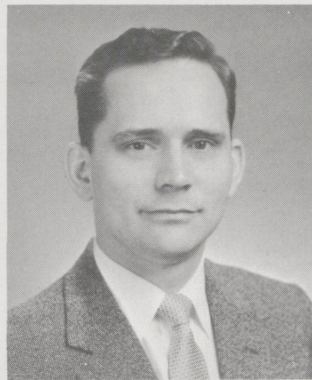
ADA PYLE  
Physical Education  
Peabody College B.S.



MARGARET ELLEN ROSER  
Librarian  
University of Kentucky B.A.  
University of Kentucky M.A.



ERWIN H. SASMAN  
Director  
Northwestern University B.S.  
Columbia University M.A.  
Columbia University D.Ed.



WILLIAM E. STEIDEN  
Band  
University of Kentucky B.M.  
University of Kentucky M.A.



LAURA WEDDLE  
Eighth Grade  
Georgetown College B.A.

## OFFICE STAFF



Our secretaries: Mrs. Gordon, and Mrs. Taylor

# SENIORS



Senior class officers

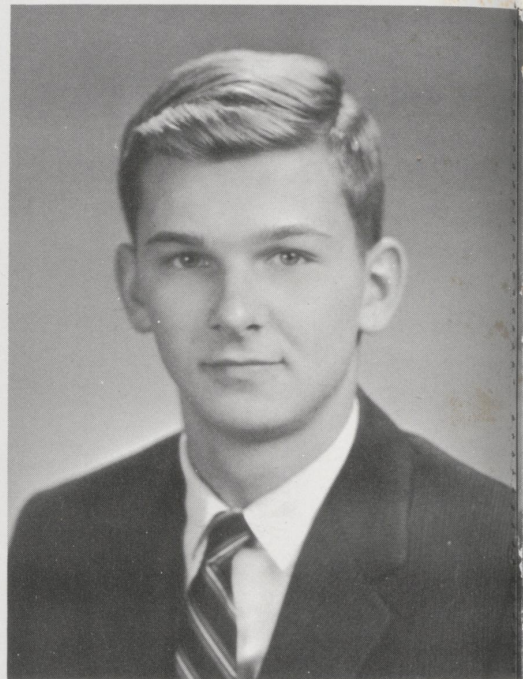


CHARLOTTE ALEXANDER ADAMS  
"Charlotte"

Entered from Morton '56  
Pep Club '56,'57,'58,'59; Glee Club '56,'57,'58,'59; Little Choir '57,'58,'59; Triple Trio '59; All-State Chorus '59; Student Council '58; Student Government '59, Secretary-Treasurer '59; Beta Club '57,'58,'59, President '59, Beta Club Convention '59; Prom Court '58,'59, Queen '59; Class treasurer, '57; Y-Teens '56,'57,'58,'59; U-Highlights Staff '58.

THOMAS LYNCH ADAMS  
"Tommy"

Entered from Kenwick '54  
Pep Club '56,'57,'58,'59, Treasurer '58; Glee Club '56,'57,'58,'59, Vice-President '59; Boys' Group '59; All-State Chorus '59; Student Council '59, President '59; Student Government '56, Vice president '56; Beta Club '57,'58,'59, Beta Club convention '59; National Honor Society '58,'59; French Club '59; Speech Class play '58; Regional Speech Contest '58,'59; Senior Play cast '59; Masque and Gavel Talent Show '58,'59; Masque and Gavel '59; Track team '56; Basketball manager '56,'57; Prom Court '58,'59; Class President '58; Crowell-Collier Salesmanship award '58; Boys' State '57; U-Highlights staff '56,'57,'58,'59; Annual Staff '59.



ELSIE JACKSON BARR  
"Elsie"

Entered from Elementary  
Pep Club '56,'57,'58; Glee Club '56,'57,'58; Student Government '56, President '56; Beta Club '58; Y-Teens '56,'57,'58; Regional Speech Festival '58; First year French award '58; U-Highlights Staff '56,'57,'58,'59.

ELIZABETH CALDWELL BURNETT  
"Betty"

Entered from Elementary  
Pep Club '56,'57,'58,'59; Glee Club '56,'57,'58,'59; Little Choir '58,'59; Student Government '57; Crowell-Collier Salesmanship award '58; National Honor Society '59; Cheerleader '56; Y-Teens '56,'57,'58,'59, President '59; Y-Teens swimming team '59; French Club '59, Sergeant-at-Arms '59; Class Secretary '57; Regional Speech Festival '56,'57; U-Highlights Staff '56,'57,'58,'59.



SARAH JANE BYERS  
"Sarah Jane"

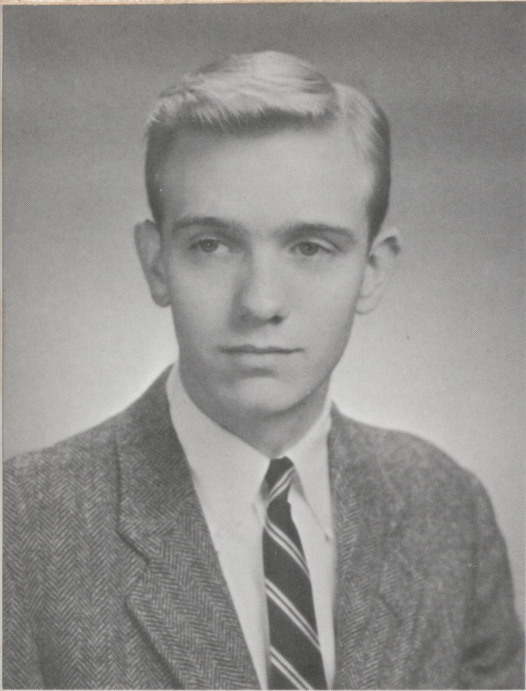
Entered from Elementary  
Pep Club '57,'58,'59, Vice president '59; Glee Club '57,'58,'59, Secretary-Treasurer '59; Little Choir '57,'58,'59, Vice president '59; Triple Trio '59; Band '57,'58, Secretary '58; Crowell-Collier Salesmanship award '58; Student Council '57; Student Government '59; Beta Club '58,'59; Prom Court '58,'59; Class Treasurer '59; Y-Teens '57,'58,'59; French Club '59; U-Highlights '57,'58,'59.



ANN REED CHAMBERLAIN  
"Ann"

Entered from Elementary  
Pep Club '56,'57,'58,'59; Glee Club '56,'57,'58,'59; Little Choir '57,'58,'59; Masque and Gavel '59; Crowell-Collier Salesmanship Award '58; U-Highlights '57,'58,'59; Annual Staff '59.



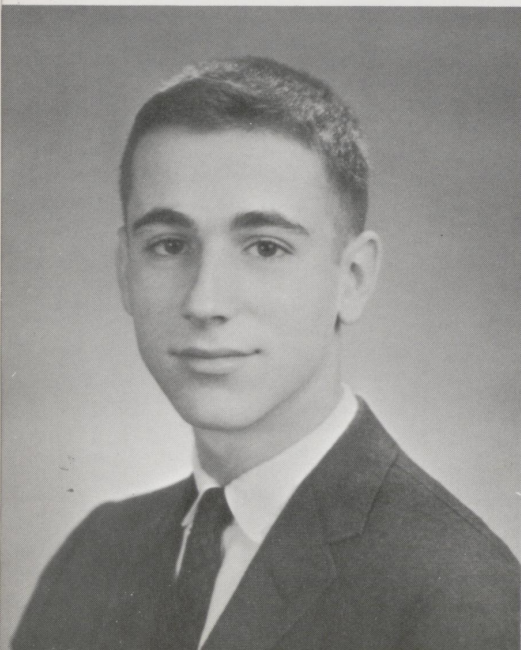


WILLIAM ALFRED COMBS  
"Bill"

Entered from Elementary  
Pep Club '56, '57, '58, '59, president '56, sergeant-at-arms '59; Glee Club '56; U-Highlights staff '57; Beta Club '58, '59, vice-president '59; Student Government '58, '59, vice-president '58, president '59; Swimming Team '56, '57; Track Team '56; Basketball Team '56; class president '57; Prom Court '58, '59.

KATHERINE DAVIS CRAIG  
"Kitty"

Entered from Elementary  
Pep Club '56, '57, '58, '59; Glee Club '57, '58, '59; Little Choir '59; Triple Trio '59; Student Government '56, secretary; Beta Club '58, '59; Masque and Gavel '57, '58, '59, secretary, '58; Senior Play '59; Best Actress Award '59; Masque and Gavel Talent Show '58, '59; Speech Festivals, Regional, '56, '57, '58, '59; State, '58, '59; Prom Court, '59; French Club '59; Y-Teens '56, '57, '58, '59; U-Highlights Staff '58, '59; Convocation Committee '57; Enoch Grehan Journalism Award '59.

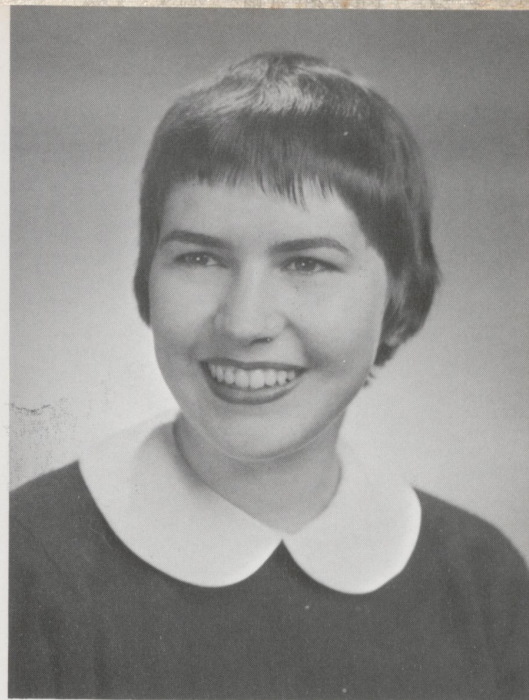


JOSEPH BROWN CURRY  
"Joe"

Entered from Elementary  
Pep Club '57, '58, '59; Student Council '58, Vice-president '59; Student Council Convention '58; Masque and Gavel '57, '58, '59, Vice-president '59; Masque and Gavel Talent Show '57, '58, '59; Senior Play '59; Best Supporting Actor Award '59; Contest Play '57, '58, '59; Speech Festival '57, '58, '59; Beta Club '58, '59; Beta Club Convention '59; Class Vice-president '59; Boys' State '58; U-Highlights Reporter '56, '57, '58, Staff '59; Annual Staff '59.

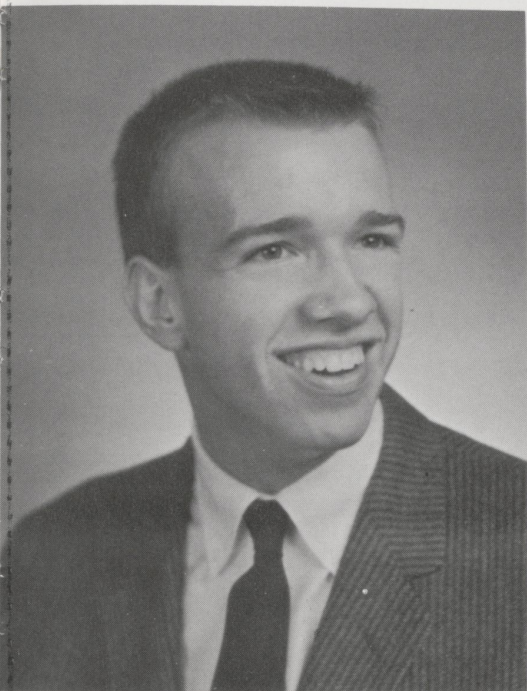
DOROTHY BRUCE DAVIS  
"Dotty"

Entered from Elementary  
Pep Club '56,'57,'58, Vice-president '56; Glee Club '56,'57;  
Crowell-Collier Salesmanship Award '58; National Honor Society  
'59; Prom Court '58; Cheerleader '56; Y-Teens '56,'57,'58; French  
Club president '59; U-Highlights '56,'57,'58,'59; Annual staff '59;  
Social Committee '59; Smith College Club Award '58; University  
High Winner "I Speak For Democracy" and "My True Security"  
Contests '59; American History Award '59.



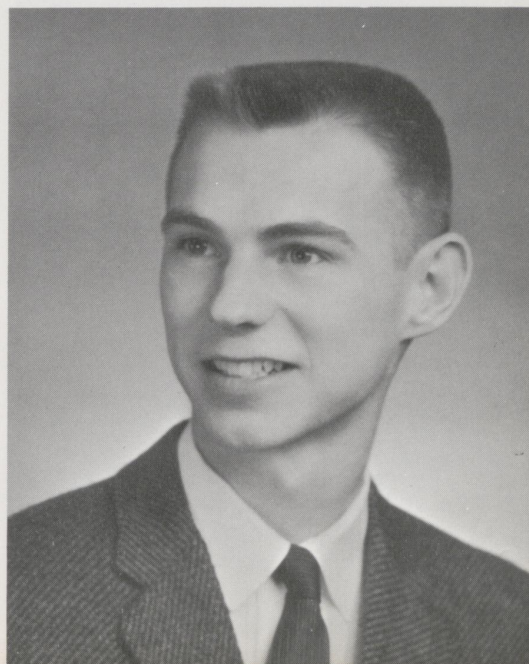
CLYDE VERNON ETHINGTON  
"C. V."

Entered from Sayre '57  
Pep Club '57,'58,'59; Glee Club '58,'59; Student Government  
representative '59; Basketball Team '57,'58,'59; Social Commit-  
tee '58.



MICHALL THOMAS FLYNN  
"Mike"

Entered from Arlington High School, Poughkeepsie, New York, '58  
Pep Club '58,'59; Glee Club '58,'59, president '59; Boys' Group  
'58,'59; Student Government '58,'59, Vice-president '59; Masque  
and Gavel Talent Show '59; Speech Class Play '59; Contest Play  
'59; Prom Court '58; Regional Speech Festival '59; French Club  
'59; Annual Staff '59; World Affairs Institute Representative '58;  
Bausch and Lomb Science Award '59.





RUTH COLEMAN GAITSKILL

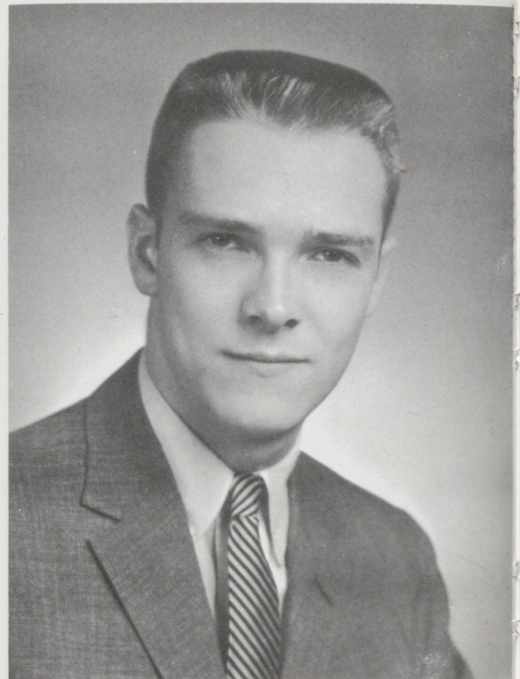
"Ruth"

Entered from Morton Junior High, '55  
Glee Club '56, '57, '58, '59; Little Choir '57, '58, '59, President '59;  
Double Quartet '57, '58; Triple Trio '59; Double Trio '58; Fall  
Chorus '56, '57; Regional Chorus '58, '59; All-State Chorus '56, '59;  
Regional Music Festival '57, '58, '59; State Music Festival '57, '58,  
'59; Senior Play '59; Regional Speech Festival '59; French Club  
'59; Pep Club '56, '57, '58, '59; Masque and Gavel '59; Music Cer-  
tificate '59.

WHAYNE HARVEY HAFFLER

"Wayne"

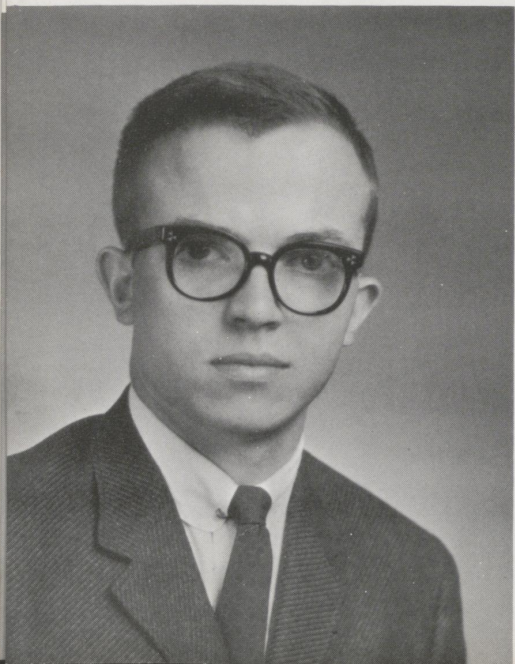
Entered from Elementary  
Pep Club '56, '57, '58, '59; Glee Club '59; Beta Club '58, '59; Beta  
Club Convention '58; Senior Play '59; Prom Court '58, '59; Class  
President '59; Class Vice-president '57, '58; Basketball Team '56;  
Boys' State '58; French Club '59; U-Highlights staff '59; Kiwanis  
Club Award '59.



TIMOTHY JOEL HANSON

"Tim"

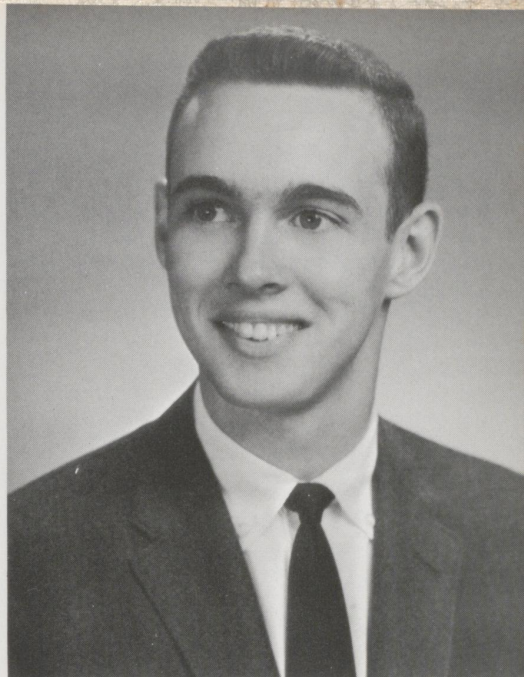
Entered from Temple High School, Temple, Texas, '57  
Pep Club '57, '58, '59; Sergeant-at-arms '58; Beta Club '59; Masque  
and Gavel '58, '59; Masque and Gavel Talent Show '58, '59; Senior  
Play '59; Speech Class Play '58; Speech Festival '58, '59.





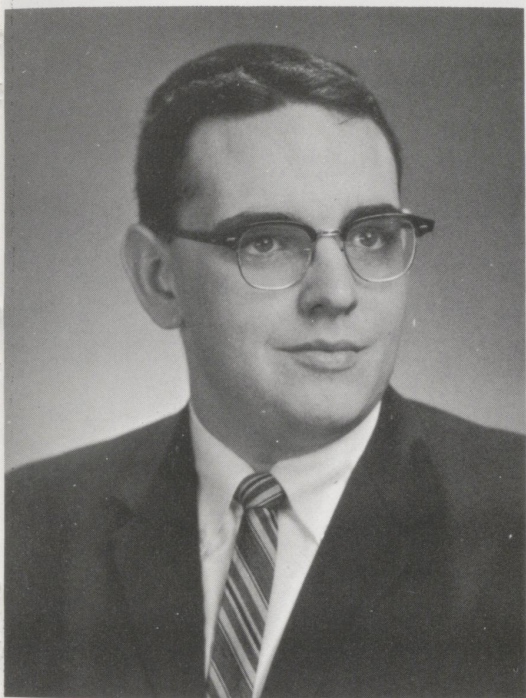
WILLIAM JACKSON HOWELL  
"Jack"

Entered from Blakely High School, Blakely, Georgia, '59  
Pep Club '59; Prom Court '59; Social Committee '59.



JOHN VINCENT KALTENBRUN, Jr.  
"John"

Entered from Christ the King '56  
Pep Club '57, '58, '59; Glee Club '57, '58, '59; All-State Chorus '57;  
Regional Music Festival '56, '57, '58; State Music Festival '56; Stu-  
dent Council '59; Beta Club '58, '59; Speech Class Play '58; Man-  
ager of Basketball Team '57, '58, '59.



LINDA HUDSON LUTES  
"Linda"

Entered from Elementary  
Pep Club '56, '57, '58, '59; Glee Club '56, '57, '58, '59; Crowell-  
Collier Salesmanship Award '58; Beta Club '58, '59, Secretary '59;  
Beta Club Convention '59; Senior Play '59; Cheerleader '56, '57, '58;  
Y-Teens '56, '57, '58, '59, Secretary '59; Y-Teens Convention '57;  
U-Highlights reporter '56, '57, '58, staff '59; Annual Staff '59; So-  
cial Committee '58.





EDWARD GRAUMAN MARKS

"Ed"

Entered from Walnut Hills High School, Cincinnati, Ohio, '59  
Senior Play '59; Best Supporting Actor Award '59; Convocation  
Committee '59; Band '59; Contest Play '59; Cancer Speech Con-  
test '59; Regional and State Speech Festival '59; Masque and  
Gavel '59; Masque and Gavel Talent Show '59; Annual Staff '59;  
U-Highlights staff '59; Marguerite McLaughlin Yearbook  
Award, '59.

JESSIE TAYLOR MAXSON

"Tay"

Entered from Elementary  
Pep Club '56,'57,'58,'59, President '59; Best New Member Award  
'57; Glee Club '56,'57,'58,'59; Little Choir '57,'58,'59; Crowell-  
Collier Salesmanship Award '58; Student Council '56,'59, Sec-  
retary-Treasurer '59; Beta Club '57,'58,'59; Beta Club Convention  
'58; Prom Court '58,'59; Class Vice-president '56; Cheerleader  
'56; Y-Teens '56,'57,'58,'59; Y-Teens Basketball Team '56,'57,  
'58,'59; Inter-Club Council Representative '58; French Club '59;  
U-Highlights Reporter '56,'58,'59, staff '57; Annual Staff '59;  
Social Committee '57; D.A.R. Citizenship Award '59.



FREDA GRACE MILLER

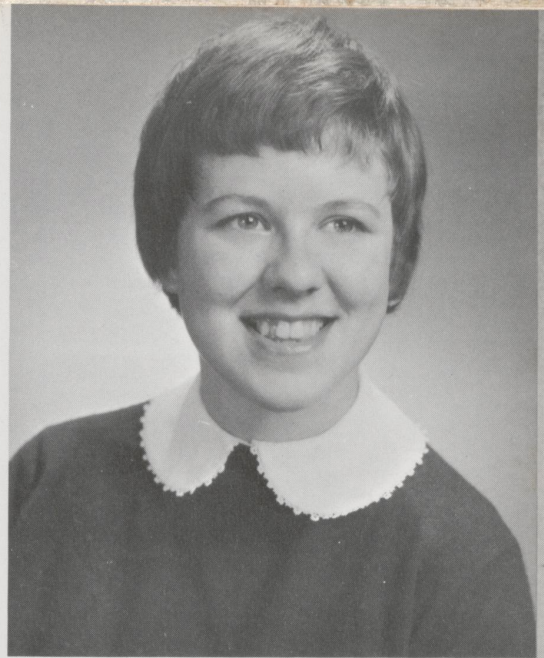
"Freda"

Entered from Elementary  
Pep Club '56,'57,'58,'59; Glee Club '56,'58; Band '56,'57,'58,'59;  
Crowell-Collier Salesmanship Award '58; Beta Club '58,'59; Na-  
tional Honor Society '58,'59; Masque and Gavel '56,'57,'58,'59,  
Secretary '57, President '58,'59; Masque and Gavel Talent Show  
'56,'57,'58,'59; Senior Play '59; Contest Play '59; Speech Festivals  
'56,'57,'58,'59; Cheerleader '56,'57; Y-Teens '56,'57,'58,'59;  
French Club '59; U-Highlights Reporter '56,'57,'58, staff '59; Annual  
Staff '59; Convocation Committee '56,'57; Masque and Gavel  
Speech Award '59.



DUDLEY LANIER MILWARD  
"Dudley"

Entered from Elementary  
Pep Club '56,'57,'58; Glee Club '57,'58; Band '56,'57,'59; Music Festival, Regional '56,'58, State '58; Masque and Gavel '58,'59, Secretary '59; Masque and Gavel Talent Show '58,'59; Senior Play '59; Best Supporting Actress Award '59; Speech Class Play '58; Regional Speech Festival '57,'58; Y-Teens '56,'57,'58; Art Award '58; French Club '59, Secretary-Treasurer; National French Award, First Year, '58, Third Year, '59; U-Highlights Staff '58,'59; Annual Staff '59; Enoch Grehan Journalism Award '59.



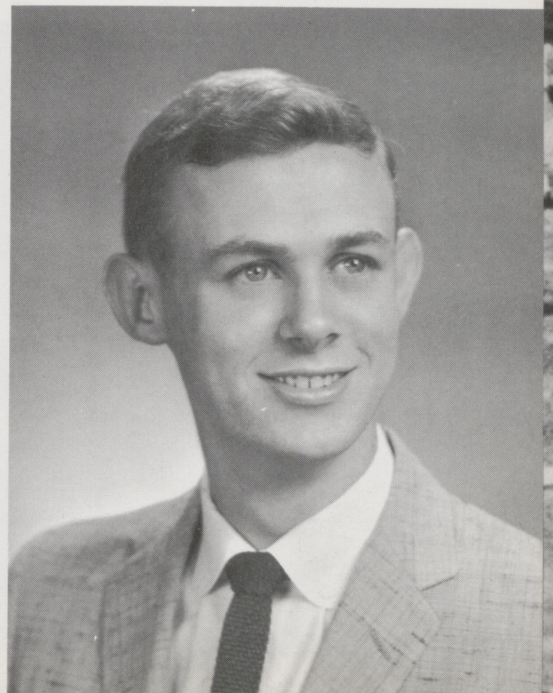
BETHANIA MARGARET SMITH  
"Bethania"

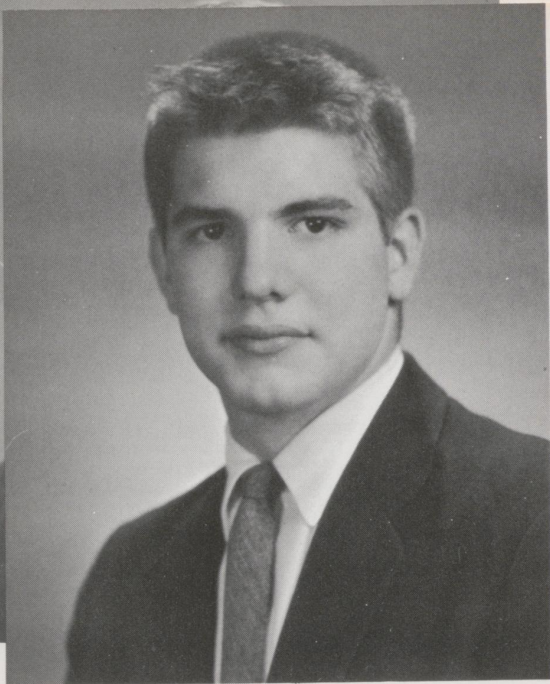
Entered from Elementary  
Pep Club '56,'57,'58,'59, Treasurer '56; Glee Club '56,'57,'58,'59; Little Choir '57,'58,'59, Reporter '58; Triple Trio '59; Fall Chorus '58; Student Government '58; National Honor Society '59; Masque and Gavel '58,'59; Masque and Gavel Talent Show '58,'59; Senior Play '59; Speech Class Play '58; Contest Play '58; Speech Festivals, Regional '57,'58, State, '58; Class Secretary '59; Girls' State '58; Y-Teens '56,'57,'58,'59, Treasurer '59; French Club '59, Vice-president; U-Highlights Staff '57,'59, Reporter '56,'58; Editor of Annual '59; National Merit Scholarship Finalist '59; Beta Club '59; Marguerite McLaughlin Yearbook Award '59.



BRECKINRIDGE SIEVERS SMITH  
"Breck"

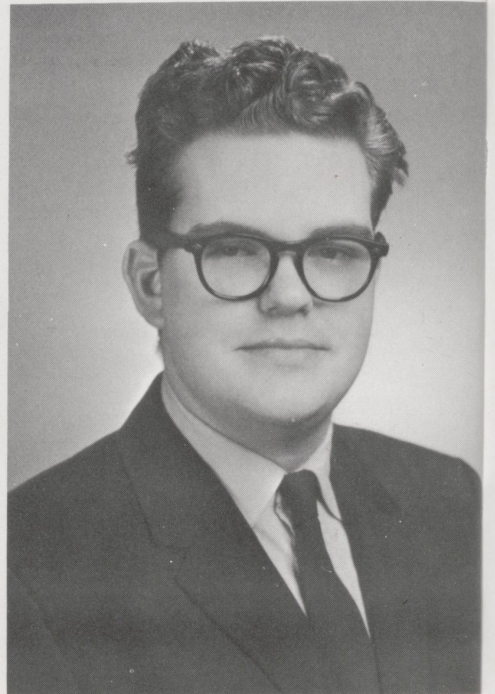
Entered from Henry Clay, '58  
Speech Class play, '59; Contest play, '59.





ROBERT ALAN SPRAGUE  
"Bob"

Entered from Elementary  
Pep Club '56, '57, '58, '59; Glee Club '56, '57, '58, '59; All-State  
Chorus '59; Regional Chorus '59; Student Government '56; Masque  
and Gavel '57, '58, '59; Masque and Gavel Talent Show '58, '59;  
Senior Play '59; Contest Play '58, '59; Speech Festivals, Regional  
'56, '57, '58, '59, State '58; Prom Court '58; Basketball Team  
'56, '57, '58; Boys' State '58; French Club '59; Annual Staff '59;  
Social Committee '56; Convocation Committee '57; Cancer  
Speech Contest State Winner '58.



ROGER HOPE URBAN  
"Roger"

Entered from South Eugene High School, Eugene, Oregon, '59.



HELEN RITCHIE WARREN  
"Helen"

Entered from Elementary  
Pep Club '56, '57, '58, '59; Glee Club '56, '57, '58, '59; Little Choir  
'59; Triple Trio '59; Student Council '59; Beta Club '58, '59;  
Prom Court '59; Class Secretary '56; Cheerleader '56, '57, '58, '59;  
Y-Teens '56, '57, '58, '59, Vice-president '59; U-Highlights staff  
'58, '59.

MARY ELIZABETH WYLIE  
"Mary Elizabeth"

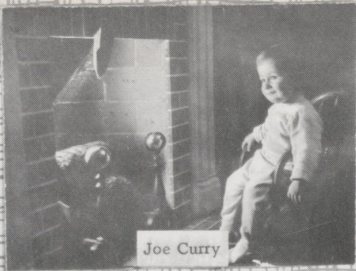
Entered from Elementary  
Pep Club '56,'57,'58,'59; Glee Club '57,'58,'59; Little Choir '57,  
'58,'59; Regional Music Festival '56,'57,'58,'59; State Music  
Festival '57,'58,'59; All-State Band '57; Band '56,'57,'58,'59;  
Crowell-Collier Salesmanship Award '58; Masque and Gavel '59;  
Masque and Gavel Talent Show '59; Senior Play '59; Speech Class  
Play '58; Contest Play '59; Cheerleader '56,'57,'58,'59; U-High-  
lights reporter '57, staff '58,'59; Beta Club '59; Music Certificate  
'59.



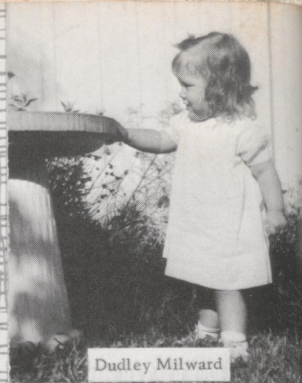
Choir  
;  
'58,'59;  
staff



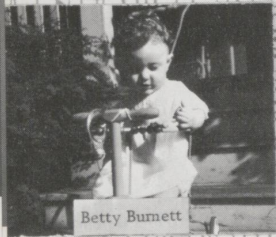
Ruth Gaitskill



Joe Curry



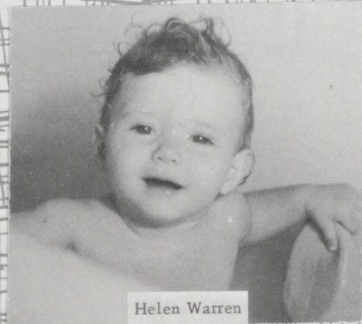
Dudley Milward



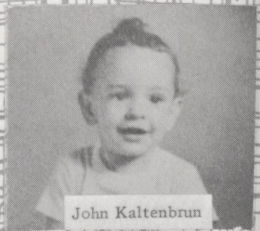
Betty Burnett



Mike Flynn



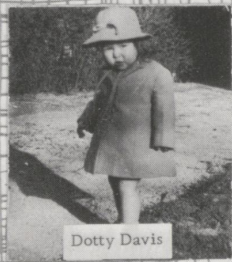
Helen Warren



John Kaltenbrun



Tommy Adams



Dotty Davis



Elsie Barr



Ann Chamberlain



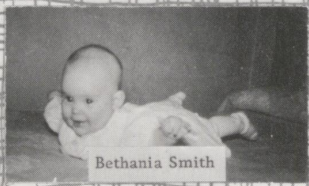
Charlotte Adams



Sarah Jane Byers



Mary Elizabeth Wylie



Bethania Smith



Freda Miller

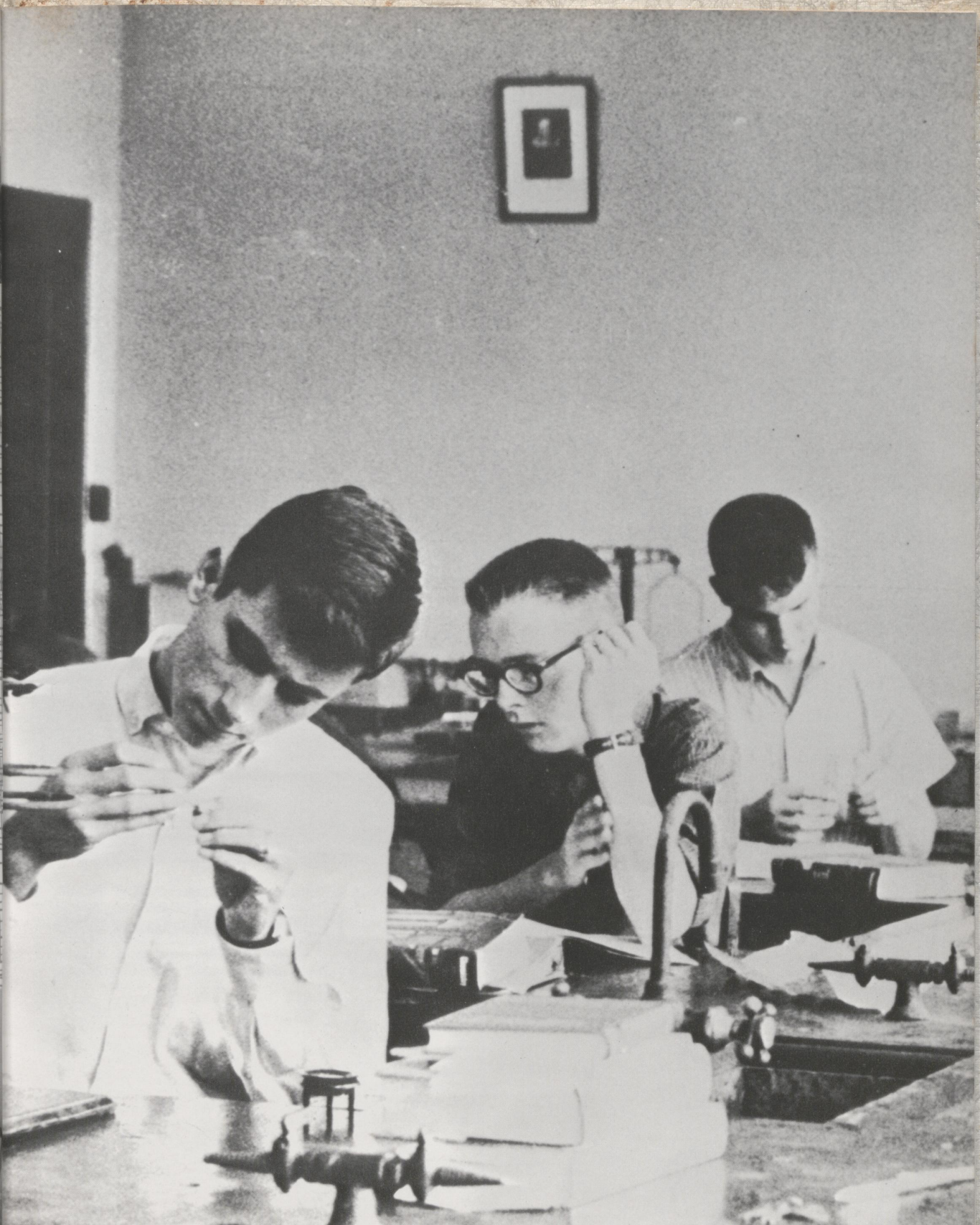


Kitty Craig



Linda Lutes

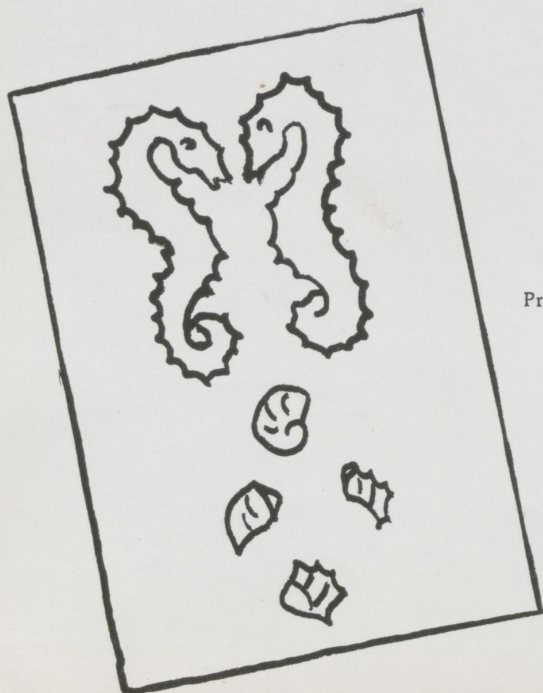
rd  
brun  
Adams  
utes



# CLASSES AND ORGANIZATIONS



FIRST ROW: Don Paris, president, Dill Marr, vice president, Jeanne Shaver, treasurer. SECOND ROW: Suzanne Griffin, Bunny Hartford, Carolyn Swartz, Libby Honerkamp, Carolyn Mansfield, Missy Bender, Carolyn Stivers, Jo Wheeler, Winnie Mauser. THIRD ROW: Bill Varellas, John Luby, Fred Gilliam, Dick Chamberlain, Diana Thomas, Nancy Cowden, Jeanie Rich, Linda Ethington, Bobby Bostick. FOURTH ROW: Chandler Davis, John Sasman, Bob Shier, Bill Warren, Mike Stewart, Jack Russell, Rufus Lisle, Bill Harper, Bill Harkins, Dwaine Harris. ABSENT: Judy Gross, secretary.



Prom bid

## JUNIOR CLASS

FIF  
tre  
bur  
Ire  
win  
Ge



## SOPHOMORE CLASS



FIRST ROW: Frank Dickey, president, Burton Milward, vice-president, Andy Nave, secretary, Melinda Stivers, treasurer. SECOND ROW: Lynne Barrett, Barbara Rath, Roy Bachmeyer, Sammy Adams, Ellen Clark, Betty Newbury, Lee DeJoe, Betsy Gillis. THIRD ROW: Sam Warren, Jimmy Coolsen, Mike Cox, William Wood, Jack Ireland, Sarah Gaitskill, Elaine Irtz, Barbara Faulconer. FOURTH ROW: Bill Turnbull, Adrian Wilkes, Joe Goodwin, Robert Pattie, Hal Kercheval, Ed Sasman, Karl Eldridge. ABSENT: Coley Calloway, Clifton Eaton, Gerard Gerhard, Jessica Paris, Susanne Phelps, Glen Shepard.



FIRST ROW: Jeanie Miles, president, Phyllis Wall, vice-president, Garland Barr, secretary, Bill Russell, treasurer. SECOND ROW: Bill Greathouse, Mary Sidney Wagner, Max Schwartz, Robert Hensley, Steve Price, Shelby Kinkead, Eric Mercer, Mary Manly. THIRD ROW: Frances Pattie, Sandy Queen, Susan Gail, Ann Price McLean, Sally King, Frances Jewell, Pat Witt, Edward Gambill. FOURTH ROW: Jimmy Stapp, Susan Jefferson, Betty Cranfill, Cathy Maxson, Joe Miller, Andy Armstrong, Jack Gurnee, Dick Eckel, Buddy Bishop, Robert Walker. ABSENT: Daniel Holman, Ben Howard, Janet Stokes.

## FRESHMAN CLASS

## EIGHTH GRADE



FIRST ROW: Joan Pryor, president; Richard Wade, vice president; Judy Roach, secretary; Susanna Ready, treasurer. SECOND ROW: Joe Dickey, Callie Cowden, Charmaine Marlowe, Kate Yates, David Porter, Fred Irtz, Randy Fishback, Skipper Hartford, Dick Cole. THIRD ROW: Judy Nuckols, Carol Bosworth, Emily Thompson, Barbara Walden, Joe McDowell, Wallace Johnston, Larry Hobbs, David Switzer. FOURTH ROW: Jeanette Dale, Bari Lowenthal, Landy Dale, Houston Davis, Brint Milward, Charles Mitchell, Howard Lusk, Lyle Walker, Anne Combs.

## SEVENTH GRADE



FIRST ROW: Betsy Keyes, president; Cleve Gambill, vice president; David Wagers, secretary; Jimmy Wilkes, treasurer. SECOND ROW: Nancy Ireland, Diane Curry, Beverly Paris, Dana Paulson, Patsy New, Kenneth Barrett, Noel Hall, Bill Ellison. THIRD ROW: Susan Clay, Louise Kelley, Jane Wiesel, Susan Blythe, Cindy Wright, Susan Mansfield, Randy Hill, Andy Williams, Don McKelvey. FOURTH ROW: Eddie Seay, Gary Stamper, Charles Nuckols, Joe Cowden, Bobby Stokes, Sherry Brewer, Sarann Shephard, Mike Reynolds.

## NATIONAL HONOR SOCIETY



FIRST ROW: Dotty Davis, Freda Miller. SECOND ROW: Mike Flynn, Bethania Smith, Betty Burnett, Tommy Adams.

## BETA CLUB



FIRST ROW: Charlotte Adams, president; Bill Combs, vice president; Linda Lutes, secretary; Whayne Hattler, treasurer. SECOND ROW: Freda Miller, Helen Warren, Kitty Craig, Carolyn Mansfield, Jo Wheeler, Sarah Jane Byers, Tay Maxson. THIRD ROW: John Kaltenbrun, Dill Marr, Jeanne Shaver, Rufus Lisle, Tommy Adams, Joe Curry, Tim Hanson.

## MASQUE AND GAVEL



FIRST ROW: Freda Miller, president; Carolyn Mansfield, treasurer; Dudley Milward, secretary. SECOND ROW: Jeanie Rich, Kitty Craig, Bethania Smith, Mary E. Wylie. THIRD ROW: Ed Marks, Tim Hanson, Bob Sprague. ABSENT: Joe Curry, vice president.

## STUDENT COUNCIL



FIRST ROW: Charmaine Marlowe, 8th grade; Lyle Walker, 8th grade; Tay Maxson, secretary; Tommy Adams, president; Joe Curry, vice president; Jane Wiesel, 7th grade; Cleve Gambill. SECOND ROW: Mike Cox, 10th grade; Lynne Barrett, 10th grade; John Kaltenbrun, 12th grade; Helen Warren, 12th grade; John Sasman, 11th grade; Susanne Griffin, 11th grade; Mary Manly, 9th grade; Shelby Kinkead, 9th grade.

## SENIOR HIGH STUDENT GOVERNMENT



FIRST ROW: William Wood, 10th grade; Mike Flynn, vice president; Bill Combs, president; Charlotte Adams, secretary; Betsy Gillis, 10th grade. SECOND ROW: Sarah Jane Byers, 12th grade; C. V. Ethington, 12th grade; Rufus Lisle, 11th grade.

## JUNIOR HIGH STUDENT GOVERNMENT



FIRST ROW: Nancy Ireland, 7th grade; Garland Barr, vice president; Robert Walker, president; Phyllis Wall, secretary; Jimmy Wilkes, 7th grade. SECOND ROW: Richard Wade, 8th grade; Janet Stokes, 9th grade; Dick Eckel, 9th grade; Judy Roach, 8th grade.



FIRST ROW: Dotty Davis, President; Bethania Smith, Vice-president; Dudley Milward, Secretary-treasurer.  
 SECOND ROW: Mary Elizabeth Wylie, Freda Miller, Sarah Jane Byers, Tay Maxson, Betty Burnett, Missy Bender,  
 Jeanie Rich, Diana Thomas. THIRD ROW: Dill Marr, Kitty Craig, Mike Flynn, Bob Sprague, Tommy Adams,  
 Whyne Haffler, Carolyn Stivers, Ed Marks.

## FRENCH CLUB

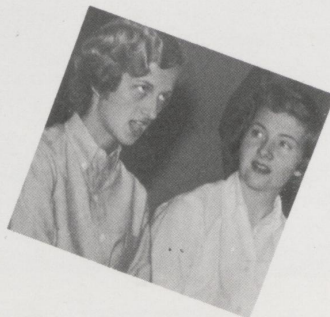
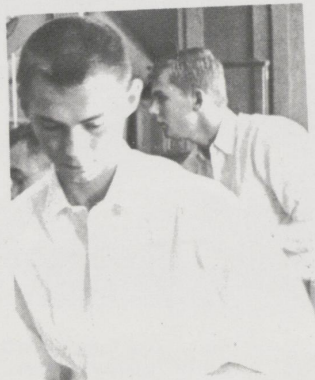
The French Club, sponsored by Mrs. Eleanor Evans, was organized this school year. Membership is open to all students of French at U-High.

# ANNUAL STAFF



FIRST ROW: Linda Lutes, Tay Maxson, Dotty Davis, Bethania Smith, Dudley Milward, Freda Miller, Ann Chamberlain. SECOND ROW: Eddie Marks, Mike Flynn, Bob Sprague, Tommy Adams. ABSENT: Joe Curry.

Editor . . . . .	Bethania Smith
Assistant Editor . . . . .	Dudley Milward
Business Manager . . . . .	Dotty Davis
Advertising Manager . . . . .	Tommy Adams
Circulation Manager . . . . .	Linda Lutes
Activities Editor . . . . .	Joe Curry
Senior Activities Editor . . . . .	Tay Maxson
Classes and Organizations Editor . . . . .	Bob Sprague
Assistant Classes and Organizations Editor . . . . .	Freda Miller
Sports Editor . . . . .	Mike Flynn
Art Editor . . . . .	Ann Chamberlain
Photographer . . . . .	Ed Marks
Faculty Adviser . . . . .	Mrs. Dolores S. Cheek





## U-HIGHLIGHTS STAFF



FIRST ROW: Freda Miller, Dudley Milward, Kitty Craig, Bethania Smith, Miss Sally Swinford. SECOND ROW: Judy Gross, Helen Warren, Barbara Faulconer, Melinda Stivers, Betsy Gillis, Suzanne Phelps, Jeanie Miles. THIRD ROW: Tommy Adams, Wayne Haffler, Mary Elizabeth Wylie, Don Paris, Joe Curry. FOURTH ROW: Gerard Gehard, Linda Lutes, Ed Marks, Joe Miller.

Editor . . . . .	Kitty Craig
Assistant Editor . . . . .	Dudley Milward
Production Manager . . . . .	Helen Warren
News Editor . . . . .	Bethania Smith
Assistant News Editor . . . . .	Elsie Barr
Feature Editor . . . . .	Freda Miller
Assistant Feature Editor . . . . .	Linda Lutes
Make Up Editor . . . . .	Joe Curry
Assistant Make Up Editor . . . . .	Judy Gross
Art Editor . . . . .	Wayne Haffler
Assistant Art Editor . . . . .	Gerard Gehard
Exchange Editor . . . . .	Mary E. Wylie
Sports Editor . . . . .	Don Paris
Assistant Sports Editor . . . . .	Tommy Adams
Junior High Editor . . . . .	Jeanie Miles
Junior High Sports Editor . . . . .	Joe Miller
Photographer . . . . .	Bill Turnbull
Typists . . . . .	Suzanne Phelps, Barbara Faulconer, Melinda Stivers, Betsy Gillis
Faculty Adviser . . . . .	Miss Sally Swinford

## Y-TEENS



FIRST ROW: Betty Burnett, president; Helen Warren, vice president; Linda Lutes, secretary; Bethania Smith, treasurer; Judy Gross, I.C.C. representative. SECOND ROW: Mary Manly, Ann Chamberlain, Elaine Irtz, Bunny Hartford, Carolyn Stivers, Barbara Faulconer, Jeanie Rich, Sally King, Sarah Byers, Kitty Craig, Missy Bender, Charlotte Adams, Freda Miller. THIRD ROW: Jeanne Miles, Andy Nave, Lee DeJoe, Phyllis Wall, Susanne Phelps, Betsy Gillis, Winnie Mauser, Carolyn Mansfield, Jo Wheeler, Libby Honerkamp, Linda Ethington, Frances Jewell. FOURTH ROW: Tay Maxson, Melinda Stivers, Lynne Barrett, Jessica Paris, Frances Pattie, Jeanne Shaver, Nancy Cowden, Kathy Maxson, Ann McLean, Janet Stokes, Susan Gail.

### Y-TEENS BASKETBALL TEAM



FIRST ROW: Melinda Stivers, Betty Burnett. SECOND ROW: Lynne Barrett, Lee DeJoe, Carolyn Mansfield, Ellen Clark, Betsy Gillis, Jo Wheeler. THIRD ROW: Carolyn Stivers, Tay Maxson, Barbara Faulconer, Linda Lutes, Jeanne Shaver.

### Y-TEENS SWIMMING TEAM



FIRST ROW: Betty Burnett, Ellen Clark, Betsy Gillis, Susanne Phelps. SECOND ROW: Melinda Stivers, Barbara Faulconer, Sandy Queen, Jeanie Rich.

## SENIOR HIGH PEP CLUB



FIRST ROW: B. Milward, G. Gerhard, R. Bachmeyer, S. Adams. SECOND ROW: L. Lutes, J. Gross, M. Bender, C. Stivers, T. Maxson, pres., S. Byers, v. -pres., J. Rich, sec., L. Honerkamp, treas., B. Combs, sgt.-at-arms, B. Smith, J. Wheeler, R. Gaitskill. THIRD ROW: E. Irtz, D. Thomas, B. Burnett, A. Chamberlain, S. Griffin, B. Hartford, F. Miller, S. Phelps, C. Swartz, A. Nave, B. Rath, M. Wylie, C. Adams, K. Craig, H. Warren, L. Ethington, W. Mauser, T. Hanson. FOURTH ROW: J. Shaver, N. Cowden, J. Ireland, L. DeJoe, M. Flynn, L. Barrett, J. Paris, D. Marr, B. Gillis, M. Stivers, B. Faulconer, C. Mansfield, B. Bostick, D. Chamberlain, C. Davis, J. Luby. FIFTH ROW: J. Kaltenbrun, R. Pattie, F. Dickey, M. Cox, W. Wood, G. Shepard, J. Coolsen, S. Warren, B. Varellas, D. Harris, B. Harper, J. Russell, B. Shier, F. Gilliam. SIXTH ROW: J. Howell, W. Haffler, J. Curry, A. Wilkes, J. Goodwin, T. Adams, C. V. Ethington, B. Sprague, B. Harkins, B. Turnbull, C. Eaton, E. Sasman, H. Kercheval, K. Eldridge, M. Stewart, D. Paris, R. Lisle, J. Sasman, B. Warren.

## JUNIOR HIGH PEP CLUB



FIRST ROW: M. Manly, pres., P. Witt, v. pres., P. Wall, sec., A. Armstrong, treas., J. Miller, sgt.at-arms. SECOND ROW: C. Cowden, S. Thompson, C. Bosworth, E. Thompson, B. Walden, C. Marlowe, B. Lowenthal, K. Yates, D. Cole. THIRD ROW: D. Switzer, A. McLean, J. Pryor, J. Roach, S. Gail, F. Jewell, M. Wagner, F. Pattie, J. Stokes, L. Hobbs, L. Walker. FOURTH ROW: J. Boyd, J. Nuckols, J. Wiesel, D. Paulson, B. Keyes, D. Curry, S. Shephard, S. Jefferson, K. Maxson, B. Cranfill, S. King, E. Gambill, J. Dickey. FIFTH ROW: R. Walker, A. Combs, J. Dale, H. Davis, L. Dale, J. Miles, B. Milward, H. Lusk, W. Johnston, J. Stapp, B. Greathouse, M. Swartz, J. Gurnee.

## CONVOCAATION COMMITTEE



FIRST ROW: Bill Ellison, Dana Paulson, Dick Eckel, Barbara Faulconer, Jim Coolsen. SECOND ROW: Bill Harper, Missy Bender, Linda Lutes, Eddie Marks.

## SOCIAL COMMITTEE



Dotty Davis, Carolyn Mansfield, Bob Shier, Jack Howell, Lee DeJoe, Glenn Shepard.



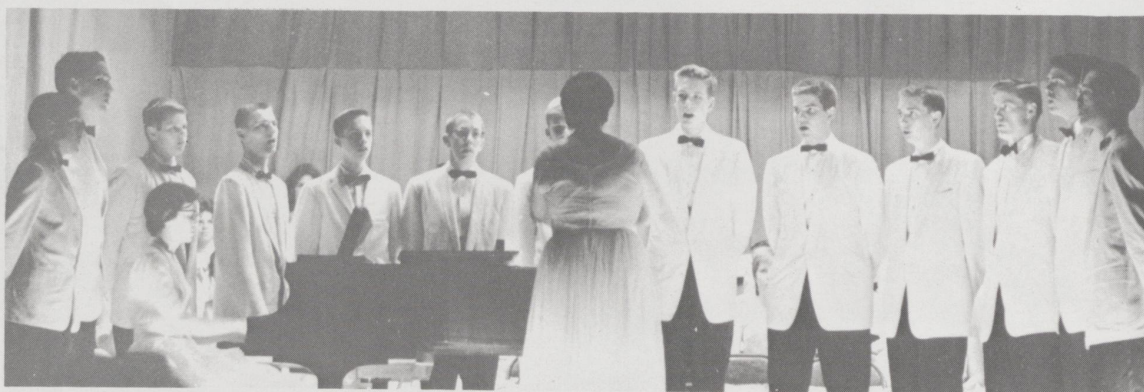
ACTIVITIES

## SPRING PROGRAM



### GLEE CLUB

### BOYS' GROUP



LEFT TO RIGHT: Sammy Adams, Adrian Wilkes, William Wood, Mike Flynn, Frank Dickey, Mike Cox, Tommy Adams, Bill Turnbull, Bob Sprague, Bill Warren, John Sasman, Karl Eldridge, Glen Shepard.

## TRIPLE TRIO



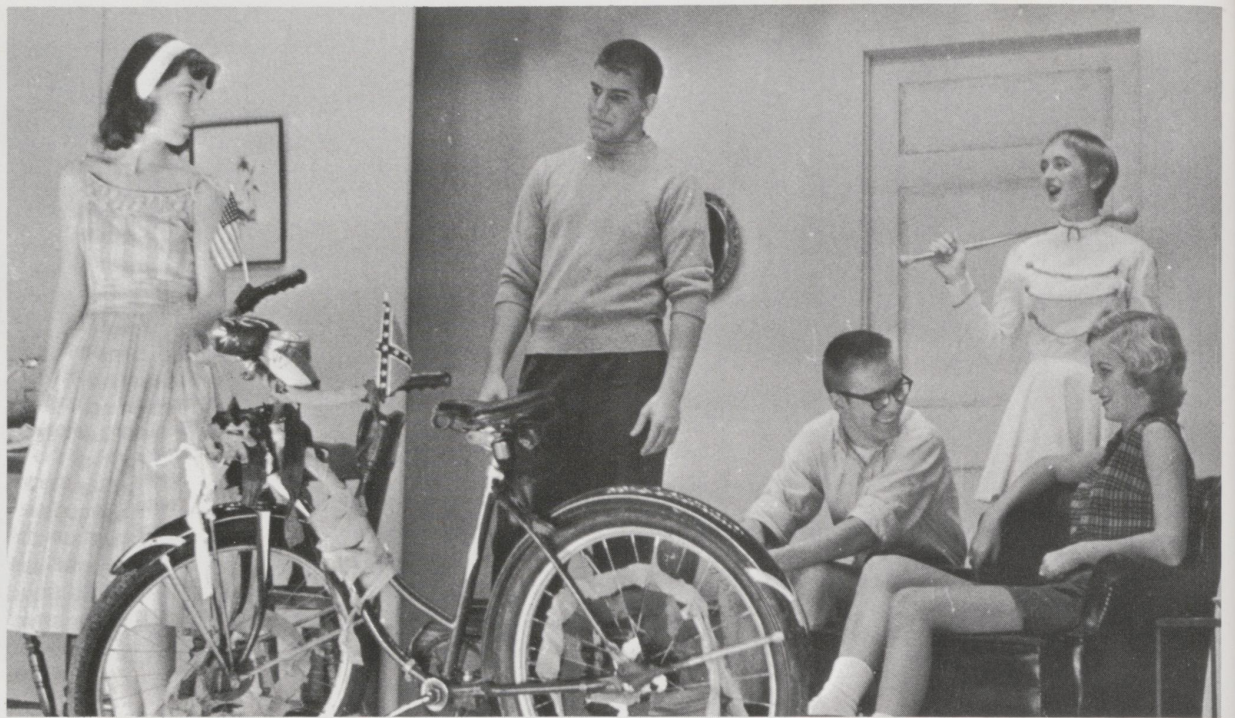
LEFT TO RIGHT: Ruth Gaitskill, Kitty Craig, Helen Warren, Charlotte Adams, Bethania Smith, Sarah Jane Byers, Jeanie Rich, Carolyn Mansfield, Missy Bender.

## LITTLE CHOIR



FIRST ROW: Mary Elizabeth Wylie, Secretary-treasurer; Sarah Jane Byers, Vice-President; Ruth Gaitskill, President; Jeanie Rich, Reporter. SECOND ROW: Lynne Barrett, Elaine Irtz, Bunny Hartford, Phyllis Wall, Ann Chamberlain, Judy Gross, Charlotte Adams, Tay Maxson, Carolyn Mansfield. THIRD ROW: Barbara Rath, Betty Burnett, Helen Warren, Kitty Craig, Libby Honerkamp, Linda Ethington, Winnie Mauser, Bethania Smith, Barbara Faulconer, Nancy Cowden, Missy Bender. ABSENT: Ellen Clark, Sarah Gaitskill.

# SENIOR PLAY



## "SEVENTEENTH SUMMER"

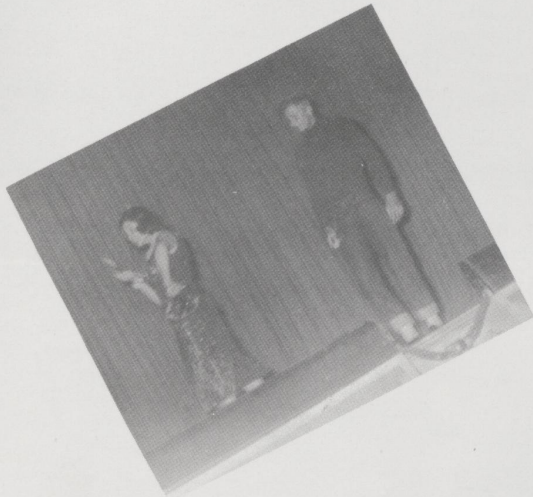
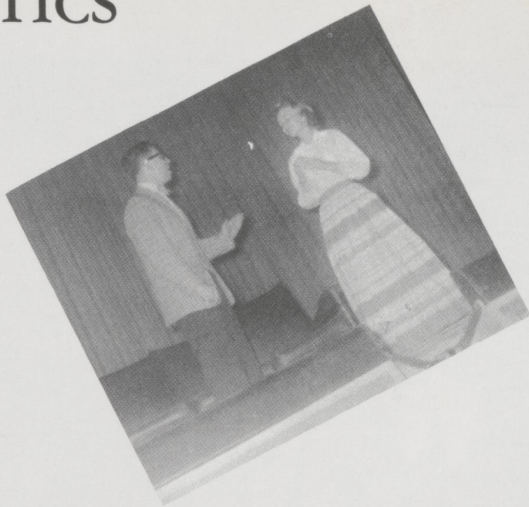
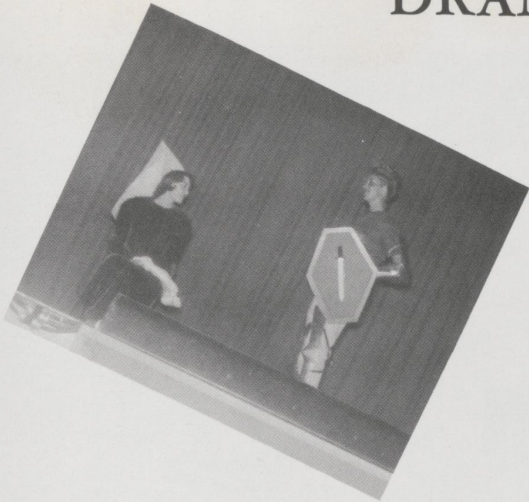
### Cast

Angie . . . . .	Kitty Craig
Margaret . . . . .	Bethania Smith
Lorraine . . . . .	Freda Miller
Kitty . . . . .	Dudley Milward
Mrs. Morrow . . . . .	Ruth Gaitskill
Mr. Morrow . . . . .	Ed Marks
Jack . . . . .	Tommy Adams
Art . . . . .	Tim Hanson
Martin . . . . .	Joe Curry
Jane . . . . .	Mary Elizabeth Wylie
Tony . . . . .	Bob Sprague
Margie . . . . .	Linda Lutes
Fitz . . . . .	Whayne Haffler





# DRAMATICS



# JUNIOR PROM COURT

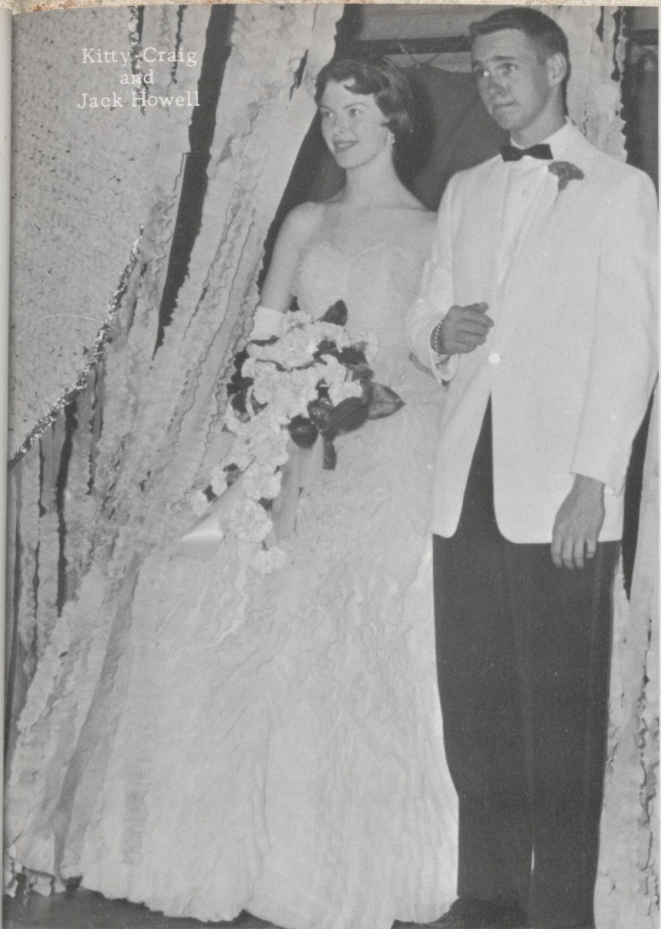


LEFT TO RIGHT: Anthony Burkeen, Scroll Bearer; Bob Shier, Dill Marr, Rufus Lisle, Carolyn Stivers, John Sasmann, Carolyn Mansfield, Jack Russell, Judy Gross, Charlotte Adams, Queen; Don Paris, President of Junior Class; Tay Maxson, Wayne Haffler, Sarah Jane Byers, Bill Combs, Helen Warren, Tommy Adams, Kitty Craig, Jack Howell, Terrell Adams, Crown Bearer.



Charlotte Alexander Adams, Queen

Kitty Craig  
and  
Jack Howell



Tay Maxson  
and  
Whayne Haffler



Helen Warren  
and  
Tommy Adams



Sarah Jane Byers  
and  
Bill Combs



## AWARDS



New initiates of National Honor Society: Judy Gross, Carolyn Stivers, Jeanne Shaver, Jeanie Rich.



Initiates of Beta Club: FIRST ROW: Bunny Hartford, Mary Wylie. SECOND ROW: Jeanie Rich, Gerard Gerhard, Missy Bender, Suzanne Griffin. THIRD ROW: Don Paris, Bethania Smith, Bill Warren, Libby Honerkamp.



Initiates of Masque and Gavel: FIRST ROW: Judy Gross, Ann Chamberlain. SECOND ROW: Elaine Irtz, Winnie Mauser, Ruth Gaitskill. THIRD ROW: John Sasman, Lynne Barrett, Bill Harhins, Tommy Adams.

## AWARDS



Senior play acting awards: Joe Curry, Kitty Craig, Dudley Milward, Ed Marks.



Rufus Lisle, delegate to Boys' State; and Jeanne Shaver, delegate to Girls' State. Absent are Bob Shier, Bill Warren, and Mike Stewart, delegates to Boys' State.



National French Award winners: Clockwise from Left: Dotty Davis, second year award; Dill Marr, First year, Dudley Milward, third year, and First prize in the state for third year French; Carolyn Stivers, first year award.



Superior ratings in Regional Speech Festival. FIRST ROW: Susan Gail, Freda Miller, Elaine Irtz. SECOND ROW: Joe Miller, Ed Marks, Kitty Craig.

## AWARDS



FIRST ROW: Freda Miller, Masque and Gavel Speech Award; Judy Gross, Junior English Award and Achievement Award in English. SECOND ROW: Mary Elizabeth Wylie, Instrumental Music Certificate; Ruth Gaitskill, Vocal Music Certificate; Dotty Davis, American History Award, Cancer Speech Contest entrant, Voice of Democracy Contest entrant. THIRD ROW: Wayne Haffler, Kiwanis Club Award; John Sasman, World Affairs Institute representative; Bethania Smith, National Merit Scholarship Contest finalist; Mike Flynn, Bausch and Lomb Science Award. Absent: Tay Maxson, D.A.R. Citizenship Award.



Bethania Smith and Eddie Marks, recipients of the Marguerite McLaughlin Yearbook Award; Kitty Craig and Dudley Milward, recipients of the Enoch Grehan Journalism Award.

SPORTS





FIRST ROW: Carolyn Stivers, Judy Gross, Lynne Barrett. SECOND ROW: Betty Newbury, Barbara Faulconer, Helen Warren, Mary Elizabeth Wylie.

## SENIOR HIGH CHEERLEADERS

## JUNIOR HIGH CHEERLEADERS

FIRST ROW: Ann Price McLean, Sally King, Cathy Maxson, Jeanie Miles. SECOND ROW: Charmaine Marlowe, Sandy Queen, Frances Jewell, Judy Nuckols.



FIRST ROW: Sashi Parisi, Wood

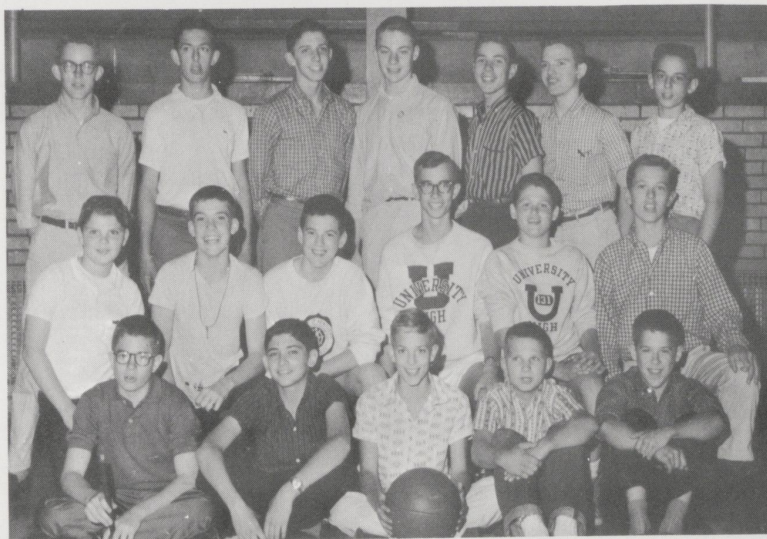


## BASKETBALL TEAMS

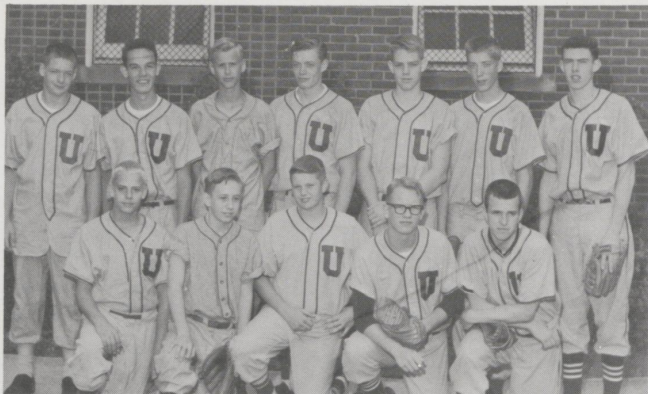


FIRST ROW: Lyle Walker, manager; Joe Goodwin, Ed Sasman, C. V. Ethington, Bob Sprague, Karl Eldridge, John Sasman, David Switzer, manager. SECOND ROW: Jack Ireland, Robert Walker, Jack Russel, Fred Gilliam, Don Paris, Bob Shier, Glen Shepard, John Kaltenbrun, trainer. THIRD ROW: Buddy Bishop, Jim Coolsen, William Wood, Mike Cox, Bobby Bostick, Frank Dickey, John Luby.

## JUNIOR HIGH



FIRST ROW: David Switzer, Joe Miller, Joe Dickey, Dickie Cole, Skipper Hartford, SECOND ROW: Andy Williams, Jimmy Wilkes, Shelby Kinkead, Buddy Bishop, Garland Barr, Bill Greathouse. THIRD ROW: Houston Davis, Jimmy Stapp, Robert Walker, Brint Milward, Howard Lusk, Fred Irtz, Lyle Walker.



## BASEBALL TEAM

FIRST ROW: Bobby Stokes, Roy Bachmeyer, William Wood, Fred Gilliam, John Luby. SECOND ROW: Don McKelvey, Glen Shepard, Jimmy Coolson, John Sasman, Don Paris, Ed Sasman, Karl Eldridge.



## TENNIS TEAM

Mike Cox, Shelby Kinkead, Jimmy Coolson, Garland Barr, Buddy Bishop. Absent: Bob Shier.



## TRACK TEAM



## SWIMMING TEAM

SEATED: Jim Boyd. FIRST ROW: Howard Lusk, Eddie Seay. SECOND ROW: Andy Armstrong, Eric Mercer, Richard Wade. THIRD ROW: Dwaine Harris, Jimmy Stapp, John Sasman, Bob Shier.

FIRST ROW: Fred Gilliam, Glen Shepard, John Luby, Burton Milward. SECOND ROW: Robert Pattie, John Sasman, C. V. Ethington, Ed Sasman, Don Paris, Karl Eldridge.



SENIOR ACTIVITIES

# CLASS HISTORY



2nd Grade . . . Remember Susie and her offspring?



3rd Grade . . . on a picnic.



5th Grade



5th Grade . . . off to Camp Daniel Boone.



# CLASS HISTORY



7th Grade



8th Grade . . . at Alex Alexander's farm.



9th Grade



10th Grade



12th Grade

## BACCALAUREATE



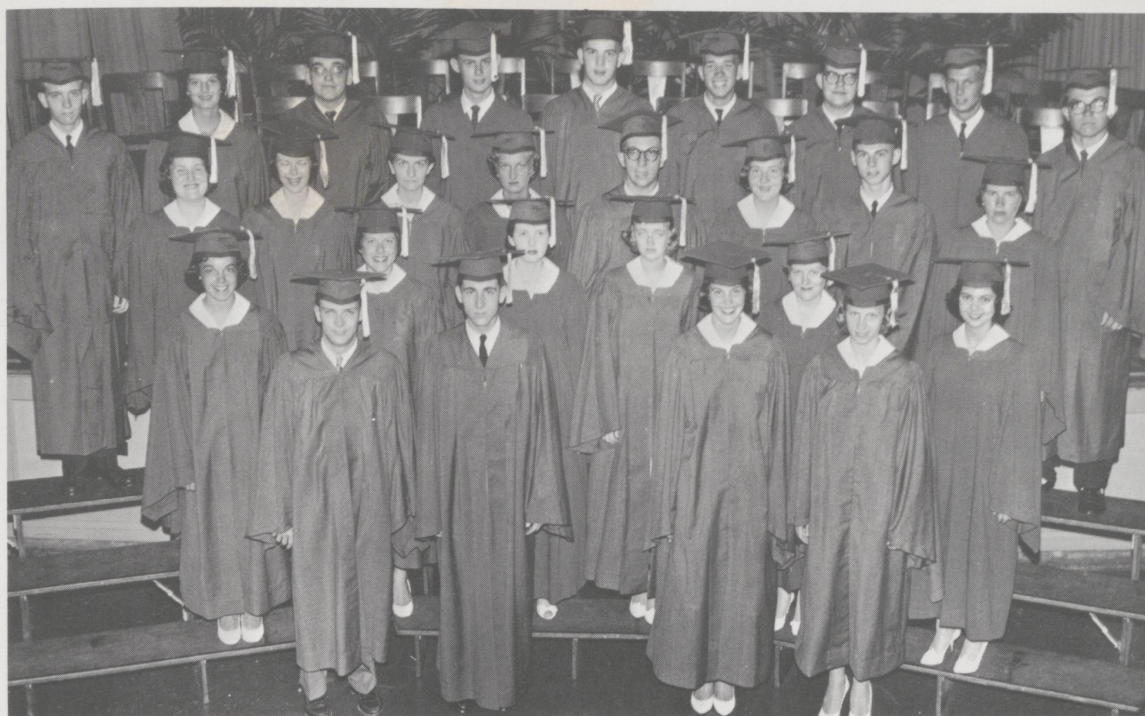
The Baccalaureate services were held May 24 at the Second Presbyterian Church. The Rev. James Angell preached the sermon.

The Senior breakfast was May 29 at the home of Mrs. George Sprague. Bob Sprague was the host.

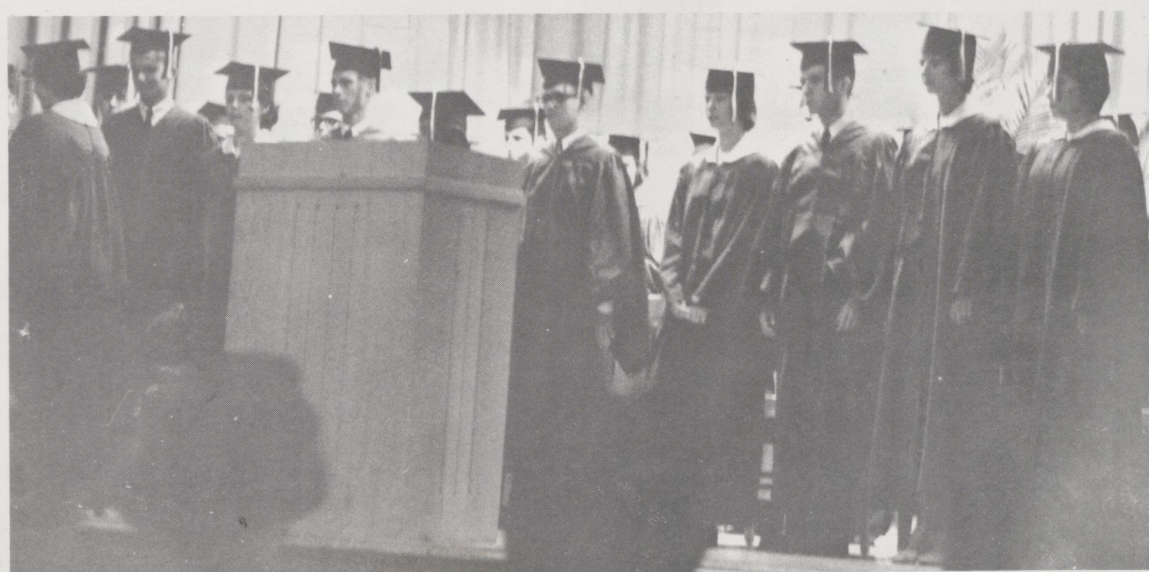
## SENIOR BREAKFAST



## COMMENCEMENT



Commencement exercises were conducted in the University High auditorium on May 29, 1959. The Rt. Rev. William R. Moody gave the Invocation and Benediction. The Commencement address was made by Dr. Leslie R. Smith, and Dr. Erwin H. Sasman presented the diplomas.

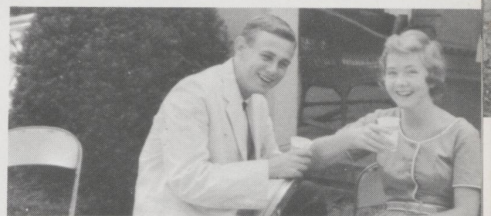
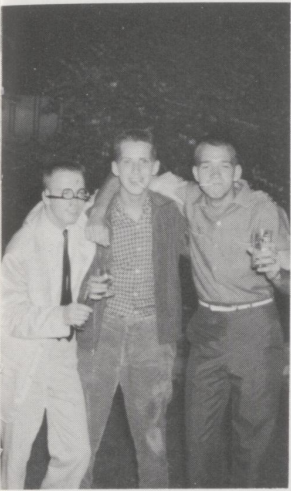


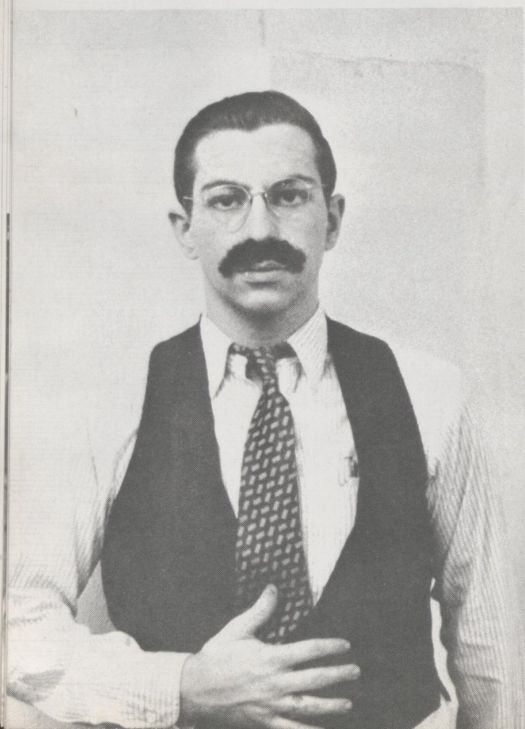
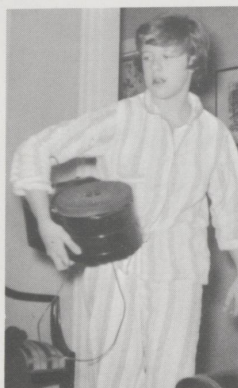
# SENIOR DIRECTORY

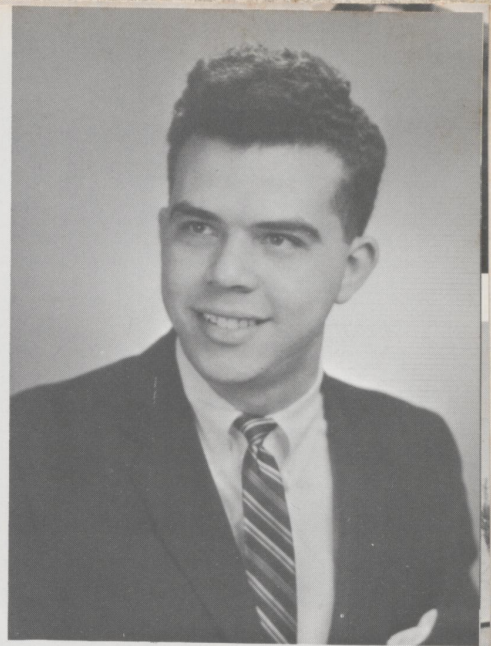
Charlotte Adams	202 State Street
Tommy Adams	Bryant Road
Elsie Barr	1501 Tates Creek Pike
Betty Burnett	11 Richmond Avenue
Sarah Jane Byers	148 South Arcadia
Ann Chamberlain	1604 Bon Air Drive
Bill Combs	230 Henry Clay Blvd.
Kitty Craig	Greendale Road
Joe Curry	299 Kingsway Drive
Dotty Davis	216 South Hanover
C. V. Ethington	Nicholasville, Kentucky
Mike Flynn	218 Shady Lane
Ruth Gaitskill	1000 Providence Road
Whayne Haffler	Russell Cave Pike
Tim Hanson	921 Wolf Run Road
Jack Howell	222 Chinoe Road
John Kaltenbrun	407 Dudley Road
Linda Lutes	329 Chinoe Road
Ed Marks	312 Culpepper Drive
Tay Maxson	1636 Ashwood Drive
Freda Miller	311 Holiday Road
Dudley Milward	1864 South Limestone
Bethania Smith	214 Shady Lane
Breck Smith	4 Richmond Avenue
Bob Sprague	128 Shady Lane
Roger Urban	264 High Street
Helen Warren	156 Mount Tabor Road
Mary Elizabeth Wylie	440 Bristol Road

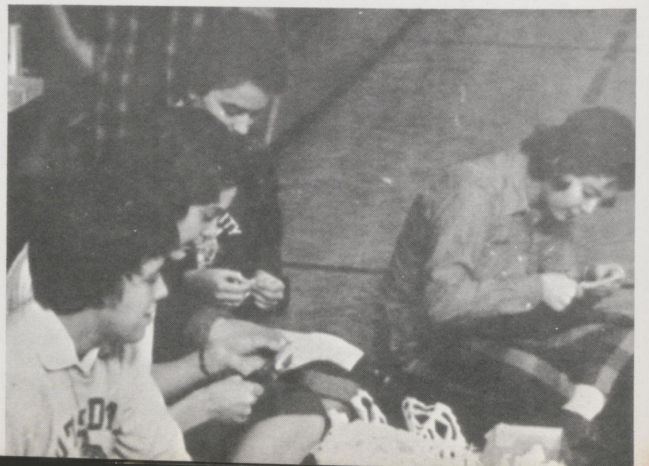
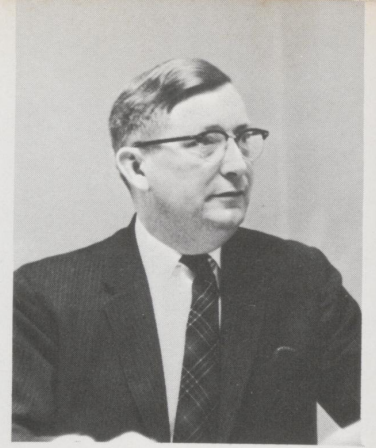


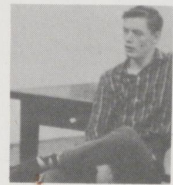
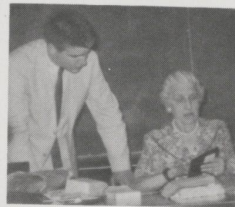












**BLUE GRASS AIRMOTIVE, INC.**

**BEECHCRAFT**

4-5234

Lexington, Ky.

**HUBBARD AND CURRY DRUGGISTS, INC.**


SHORT AND LIMESTONE STREETS

YOU CAN HELP LEXINGTON SOLVE ITS TRAFFIC AND PARKING PROBLEMS  
SHOP IN

**CHEVY CHASE VILLAGE**

**CONVENIENT SHOPPING**

**CONVENIENT PARKING**



**Sunday Herald-Leader**  
SUNDAY

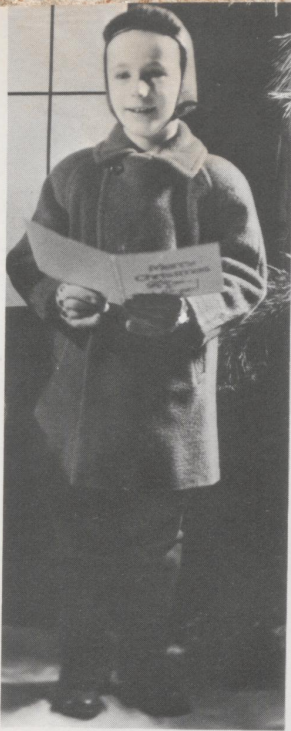
**THE LEXINGTON HERALD**  
MORNING

*Published by*

**THE LEXINGTON LEADER**  
EVENING

**LEXINGTON HERALD-LEADER CO.**

LEXINGTON, KY.



COMPLETE COVERAGE BY "THE LOOM" . . .



Who Loves You and Likes to Help You Look Your Best . . .

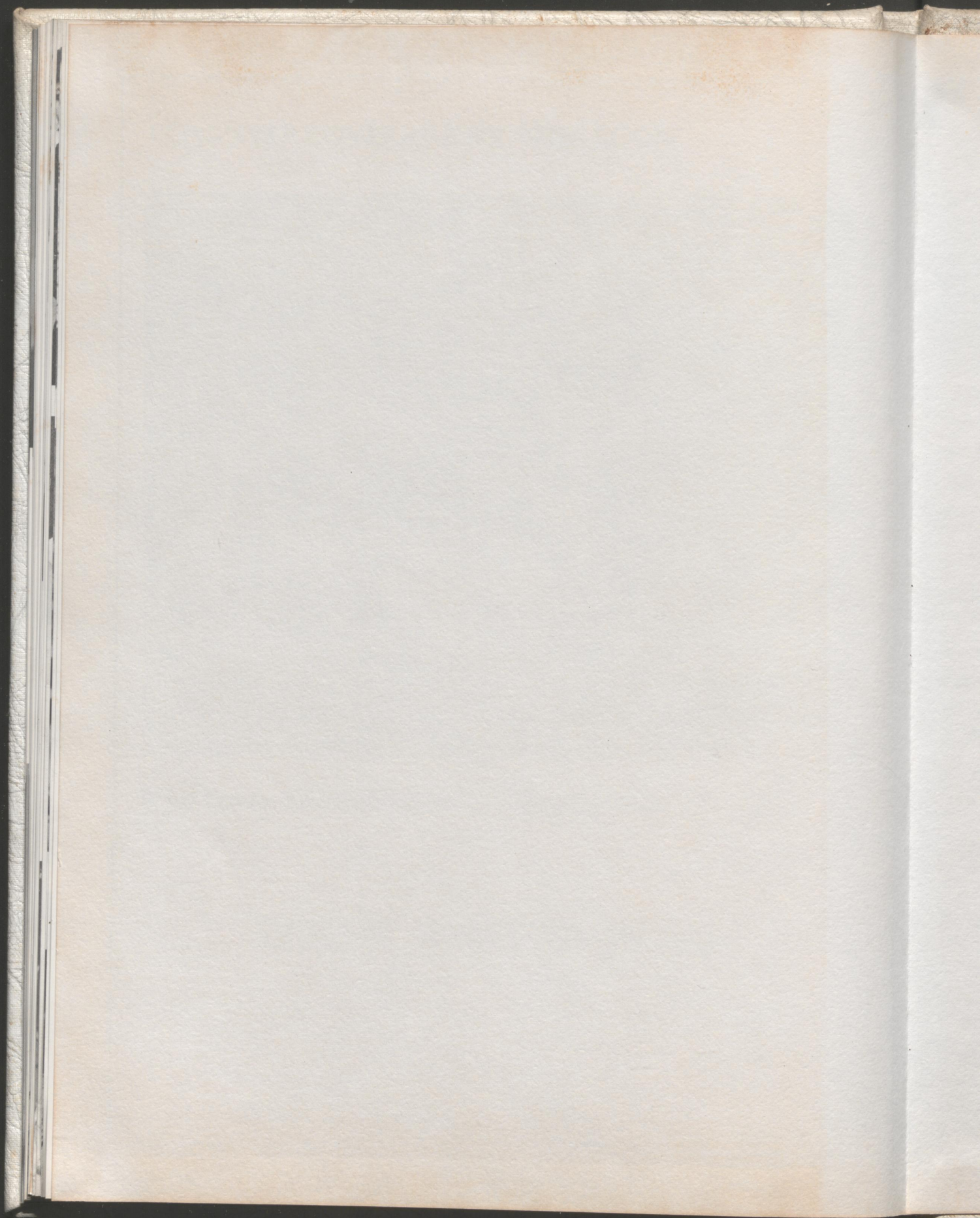
## LOOM AND NEEDLE

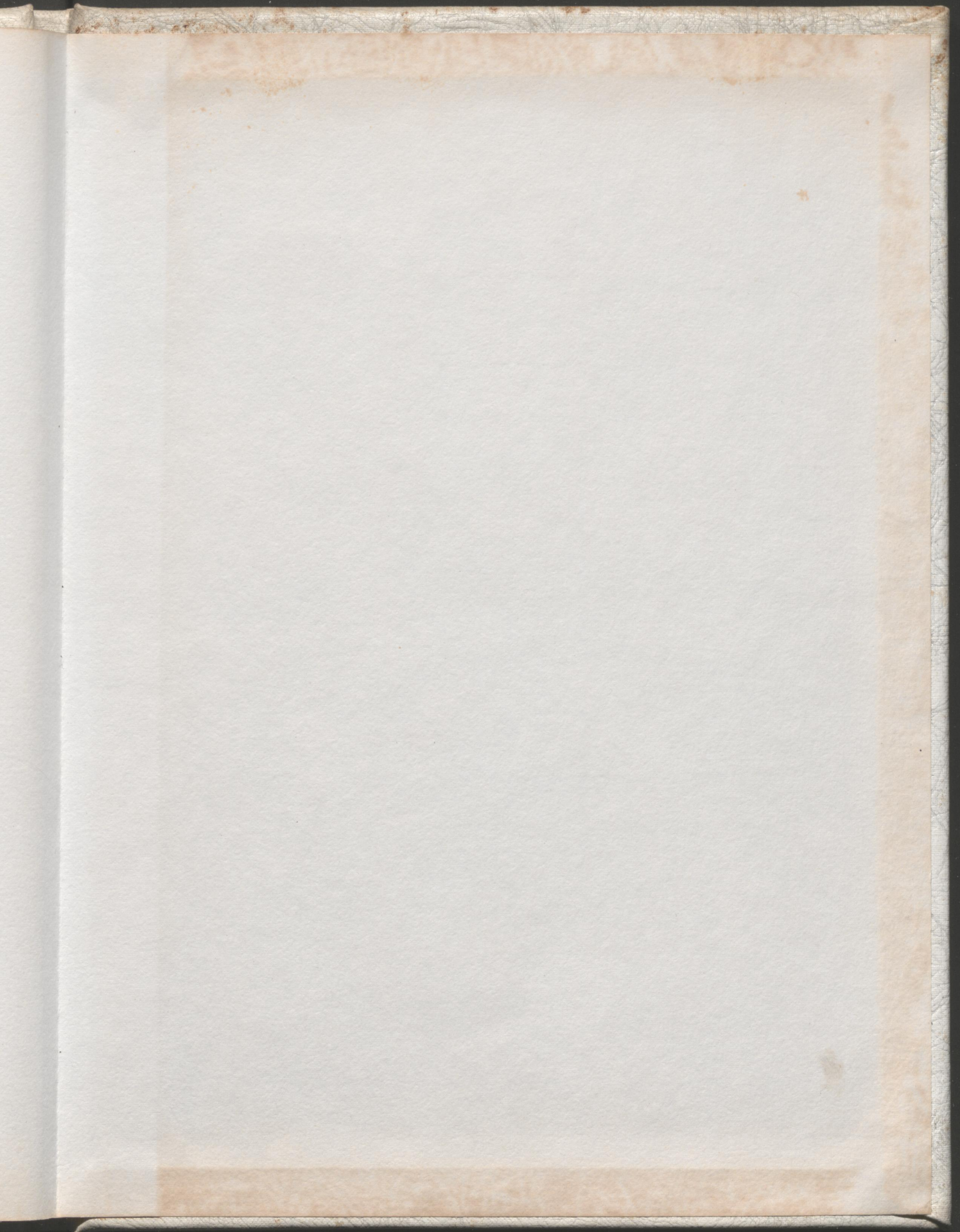
170 on the Esplanade

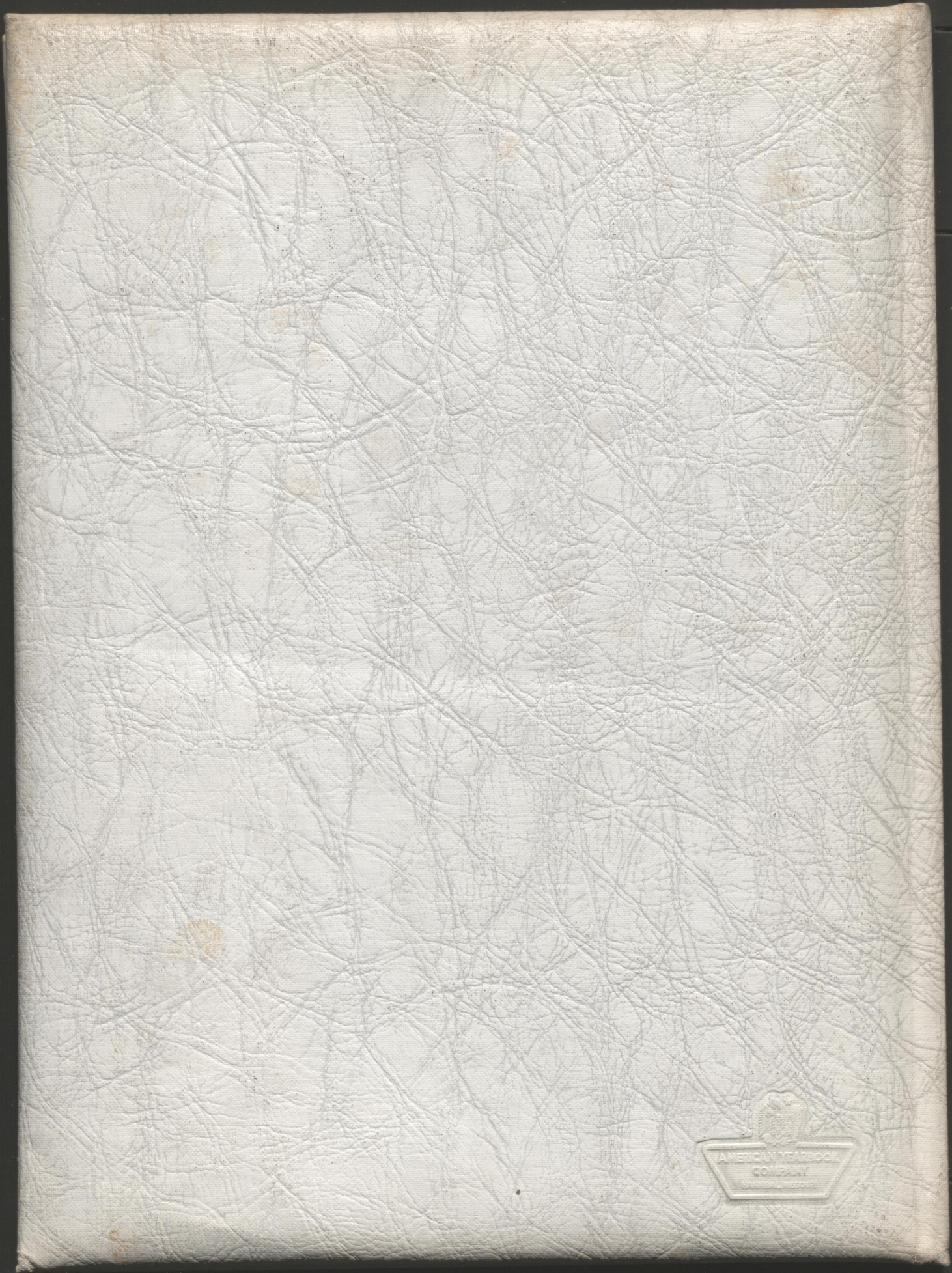




t . . .







AMERICAN WEARBOOK  
COMPANY  
MADE IN U.S.A.