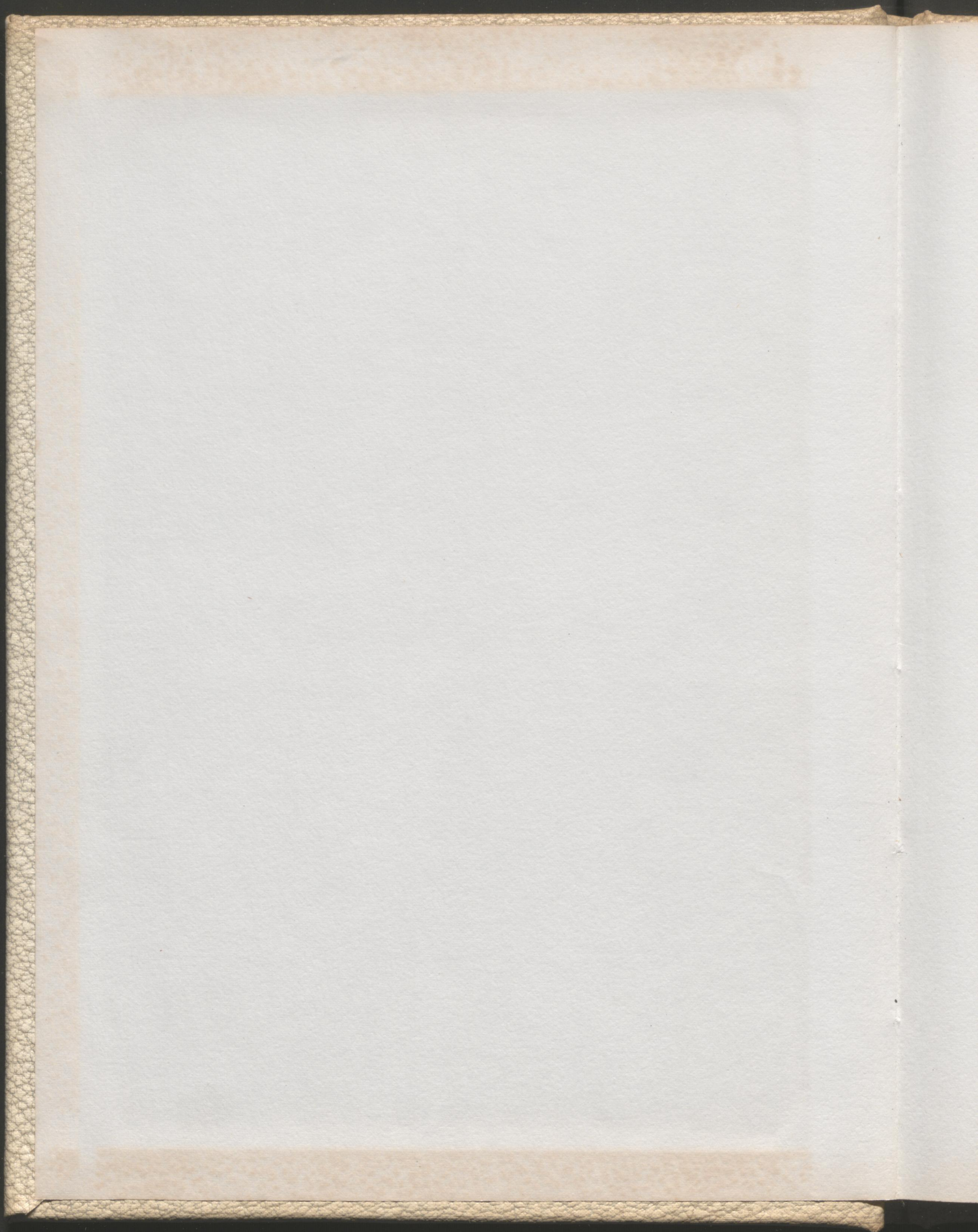
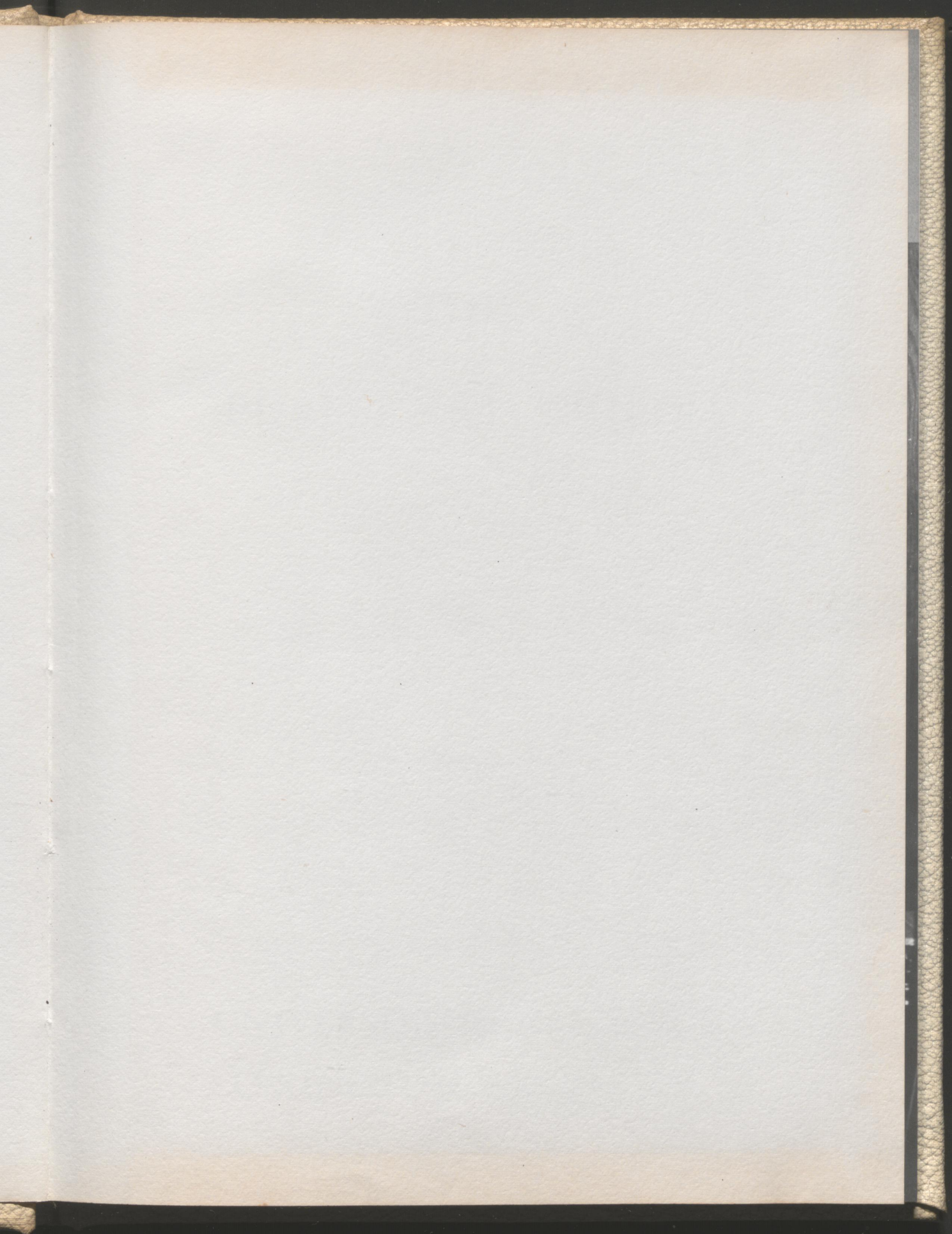
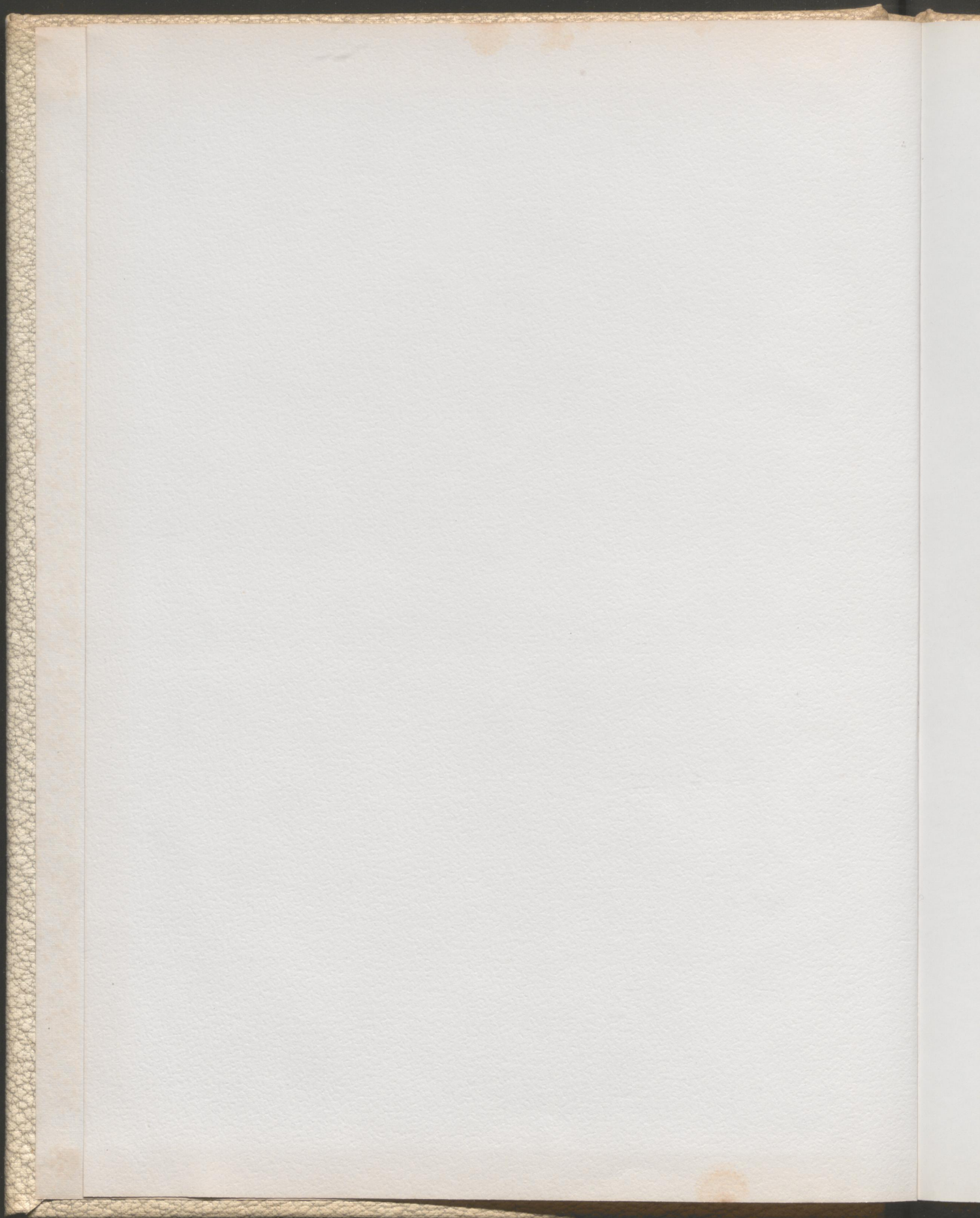


University High

1960







THE
PURPLE AND WHITE

1960

UNIVERSITY HIGH SCHOOL
LEXINGTON, KENTUCKY

D
E
D
I
C
A
T
I
O
N



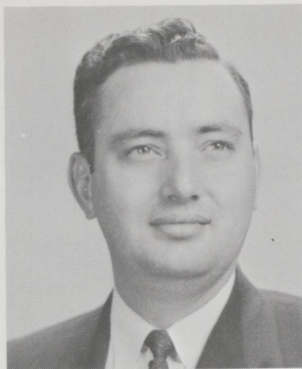
To show our appreciation for her willingness to help us in any worthwhile thing we strive to do, for her determination and desire to do anything in her power to make our school a better place, and for her friendship and loyalty to our class, the Seniors dedicate the 1960 PURPLE AND WHITE to MRS. SHERMAN MILLER. We will long remember, love, and respect our beloved English teacher.

FACULTY



ETRY





EMMETT D. BURKEEN
Speech and Psychology
Murray State College B.S.
University of Kentucky M.A.



ALMA VIRGINIA CARL
Seventh Grade
University of Kentucky B.A.
University of Kentucky M.A.



MRS. ROBERT
COCANOUGHER
English
Centre College B.A.



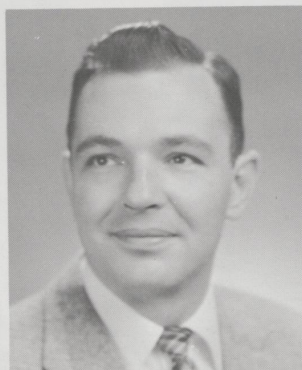
MRS. ELEANOR EVANS
Latin and French
University of Alberta B.A.
University of Oregon M.A.



JESS GARDNER
General Math and Science
Driver Education
University of Kentucky A.B.
University of Kentucky M.A.



MISS RUTH HOPE HAINES
Art
Temple University B.S.
Columbia University M.A.



EUGENE HUFF
Athletics
Wofford College A.B.
University of Tennessee
M.S.



MRS. J. A. JOBERT
Physical Education
Peabody College B.S.



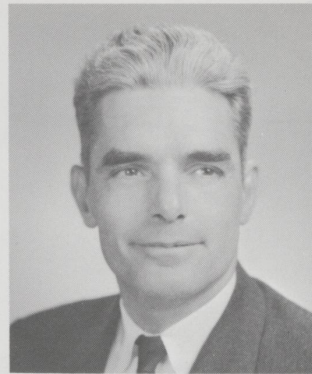
DURBIN COLLINS KEMPER
Science
Georgetown College B.S.
University of Kentucky M.A.



MRS. SHERMAN E.
MILLER
Senior English
University of Kentucky B.A.
University of Kentucky M.A.



MRS. RUTH COLLINS
OSBORNE
Vocal Music
Georgetown College B.A.
University of Kentucky M.A.



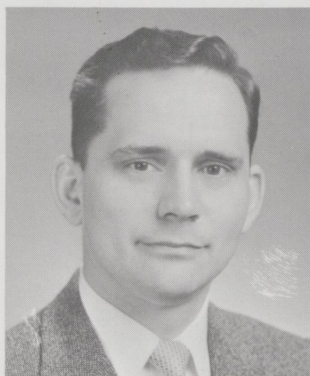
EUCLID LEON PORTER
Mathematics
Georgetown College B.A.
University of Kentucky M.A.



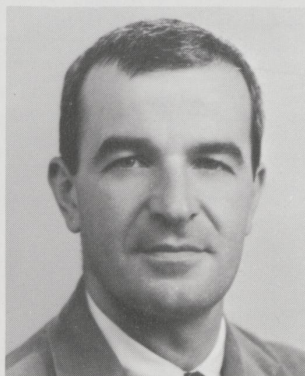
MISS MARGARET ELLEN
ROSER
Librarian
University of Kentucky B.A.
University of Kentucky M.A.



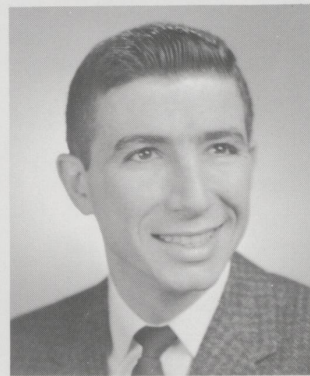
ERWIN H. SASMAN
Director
Northwestern University B.S.
Columbia University M.A.
Columbia University D.Ed.



WILLIAM E. STEIDEN
Band
University of Kentucky B.M.
University of Kentucky M.A.



RICHARD STOFER, Jr.
Social Studies
University of Kentucky A.B.
University of Kentucky M.A.



JOE WISE
Eighth Grade
Eastern Kentucky State
College B.A.
University of Kentucky M.A.

OFFICE STAFF



Our secretaries: Mrs. David Hume and Mrs. Frank Taylor



SENIORS



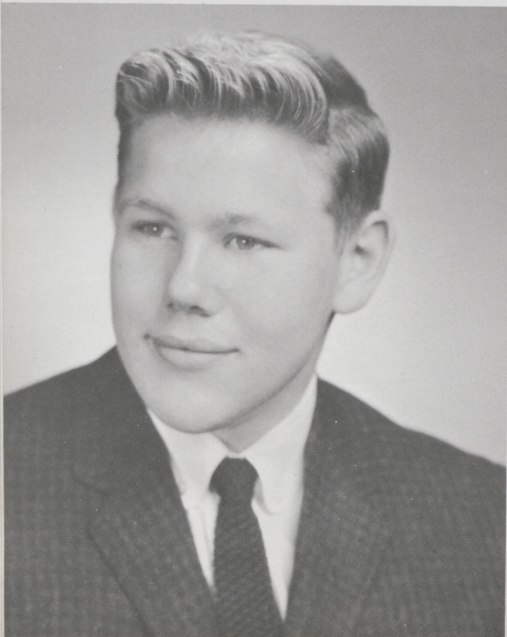
MARY JANE MAINS BENDER
"Missy"

Entered from Henry Clay '59
Glee Club '59,'60; State Music Festival '59,'60; All State
Chorus '60; Little Choir '59,'60; Double Trio '59,'60; Y-
Teens '59,'60; Pep Club '59,'60; Beta Club '59,'60; Masque
and Gavel Talent Show '60; Prom Court '60; Convocation
Committee '59; French Club '59,'60, Secretary '60; Annual
Staff '60.



BENJIMAN ROBERT BOSTICK IV
"Bobby"

Entered from Lafayette '59
Baseball Team '59; Pep Club '59,'60; Basketball Team
'59,'60; Track Team '59,'60; Student Government '60,
Vice-President '60; Masque and Gavel Talent Show '60;
Prom Court '60; Senior Play '60; Social Committee '60;
Convocation Committee '60; U-Hi Lights Staff '60.

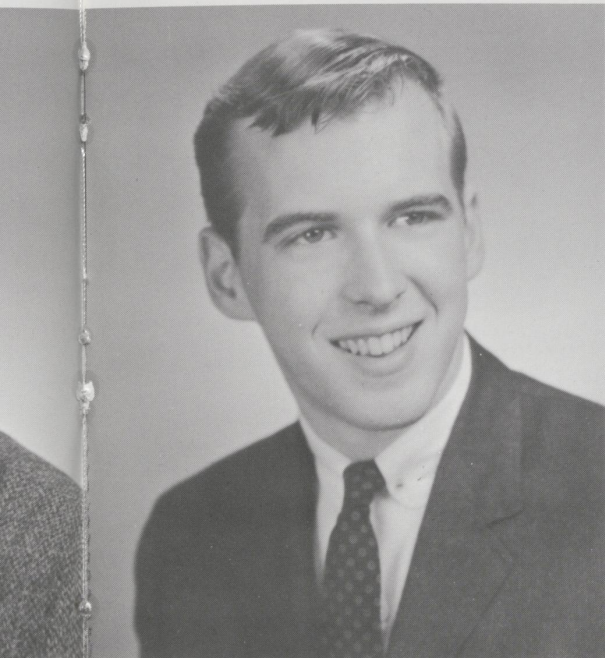


RICHARD MARTIN CHAMBERLAIN
"Dick"

Entered from Elementary
State Music Festival '57; Band '57; Pep Club '57,'58,'59,'60;
Basketball Team '57; Manager, Basketball Team '58; Senior
Play '60; Cromwell Collier Salesmanship Award '59.

NANCY JEANNE COWDEN
"Nancy"

Entered from Elementary
Glee Club '57,'58,'59,'60, Secretary-Treasurer '60; State
Music Festival '57,'58,'59,'60; Fall Chorus '58; All State
Chorus '60; Little Choir '57,'58,'59,'60, President '60;
Double Trio '60; Y-Teens '57,'58,'59,'60, Vice-President
'60, Basketball '58,'59, Swimming '58; Pep Club '57,'58,
'59,'60; Student Government '58; Student Council '60;
Masque and Gavel Talent Show '59,'60; Prom Queen '60;
Class Vice-President '58; Senior Play '60; Speech Class
Play '59; Convocation Committee '57,'58; Annual Staff '60;
U-Hi Lights Staff '57,'58,'59; Cromwell Collier Salesman-
ship Award '59; DAR Award '60.



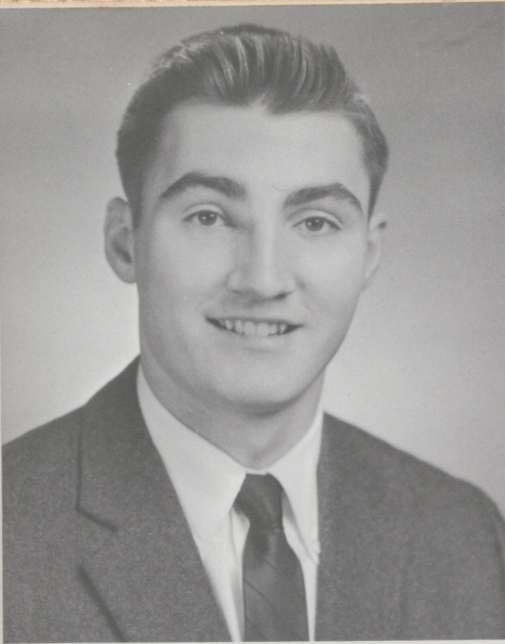
CHANDLER DECATUR DAVIS III
"Chandler"

Entered from Owensboro Senior High, Owensboro, Kentucky,
'58
Senior Play '60; Pep Club '59,'60; Speech Class Play '59.

LINDA LEE ETHINGTON
"Linda"

Entered from Sayre '57
Glee Club '57,'58,'59,'60; State Music Festival '58,'59,'60;
Little Choir '57,'58,'59,'60; Double Trio '60; Y-Teens '57,
'58,'59; Pep Club '58,'59,'60; Prom Court '60; Speech Class
Play '59.



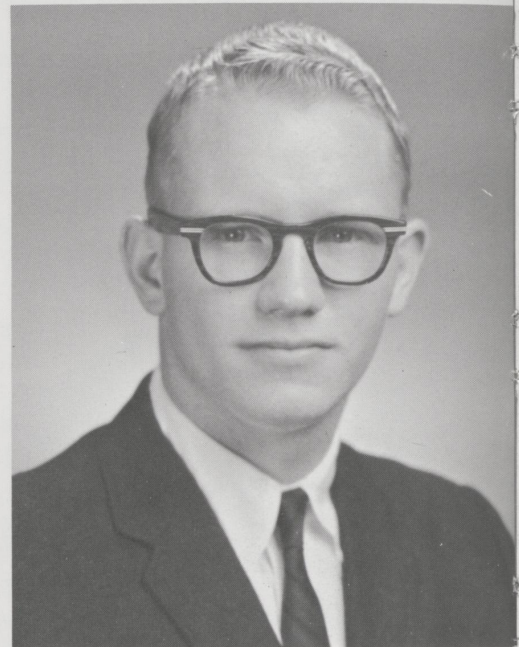


ROBERT OWEN EVANS, Jr.
"Bob"

Entered from Lafayette '58
Glee Club '58,'60; Pep Club '58; Baseball Team '58; Senior
Play '60; Speech Class Play '60.

FREDERICK ELBERTICE GILLIAM
"Fred"

Entered from Henry Clay '59
Baseball Team '59,'60; Pep Club '59,'60; Basketball Team
'59,'60; Track Team '59,'60; Senior Play '60; French Club
'59.



SUZANNE CRAIG GRIFFIN
"Sue"

Entered from Elementary
Glee Club '57,'58,'59,'60; Y-Teens '60; Pep Club '57,'58,
'59,'60; Student Council '59; Beta Club '59,'60; Treasurer
'60, Beta Club Convention '60; Speech Class Play '60; French
Club '59; Annual Staff '60; Art Award for Painting '60; Best
Old Senior High Member of Pep Club '60.



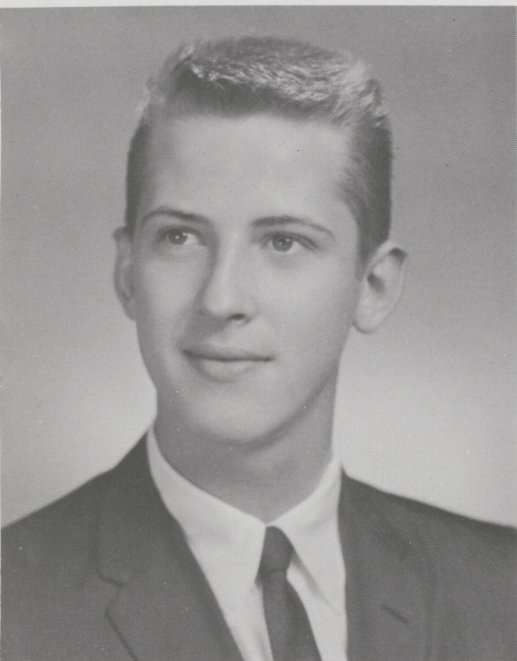
JUDITH ANN GROSS
"Judy"

Entered from Elementary
Glee Club '57,'58,'59,'60; State Music Festival '58,'59,'60;
Music Certificate '58,'59,'60; Little Choir '58,'59,'60,
Secretary-Treasurer '60; Y-Teens '57,'58,'59,'60, Basketball
'58, Inter-Club Council Representative '59; Pep Club '57,
'58,'59,'60; Cheerleader '57,'58,'59,'60; National Honor
Society '59,'60, Secretary-Treasurer '60; Masque and Gavel
'59,'60, Secretary '59; Masque and Gavel Talent Show '57,
'60; Class Secretary '59; Senior Play '60; Prom Court '59,
'60; Speech Class Play '59; Annual Staff, Assistant Editor,
'60; U-Hi Lights Staff, Assistant Editor, '60; Cromwell
Collier Salesmanship Award '59; Smith College Club English
Award '59; Enoch Grehan Journalism Award '60; Marguerite
McLaughlin Yearbook Award '60; Transylvania Scholarship
'60; Beta Club '60; Chi Delta Phi English Award '60.



WILLIAM HOLLIDAY HARKINS
"Bill"

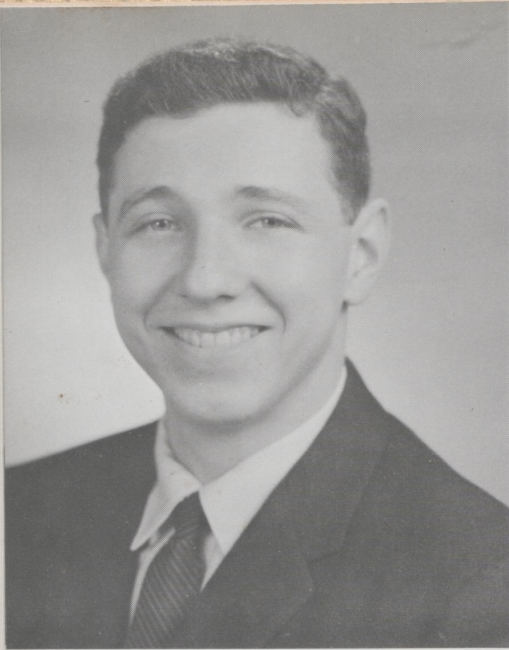
Entered from Prestonsburg, High, Prestonsburg, Kentucky, '59
Glee Club '59; Pep Club '59,'60; Baseball Team '59; Masque
and Gavel '59,'60, Treasurer '60; Masque and Gavel Talent
Show '59,'60; Prom Court '60; Senior Play '60; Contest Play
'59,'60; Speech Class Play '59.



WILLIAM HENRY HARPER
"Bill"

Entered from Elementary
Regional Music Festival '57,'60; State Music Festival '57,
'60; Music Certificate '57, '60; Band '57,'58,'60; Pep Club
'59,'60; Basketball Team, Manager '57; Masque and Gavel
'60; Masque and Gavel Talent Show '59,'60; Senior Play
'60; Contest Play '59; Speech Class Play '59,'60; Speech
Festival '58,'60; Convocation Committee '59; French Club
'59; Junior League Instrumental Music Award '60.



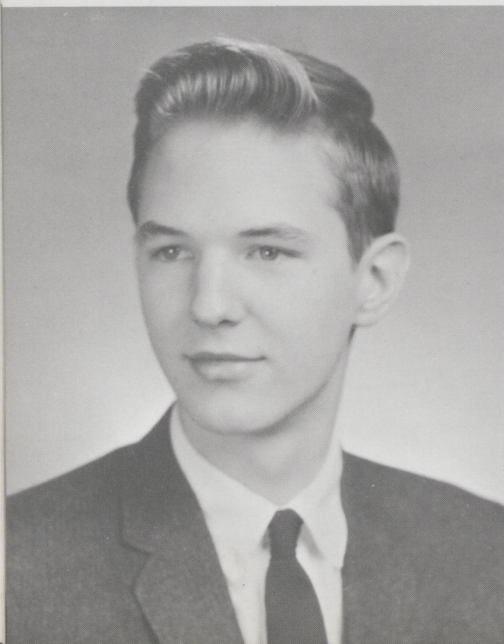


BARRY WAYNE HAYES
"Barry"

Entered from Pikeville High School, Pikeville, Kentucky, '59
Speech Class Play '60.

ELIZABETH LOUISE HONERKAMP
"Libby Lou"

Entered from Elementary
Glee Club '57,'58,'59,'60; State Music Festival '59,'60;
Music Certificate '59,'60; Little Choir '59,'60; Y-Teens
'57,'58,'59,'60, Treasurer '60; Pep Club '57,'58,'59,'60,
Treasurer '60; Student Government '57,'60; Beta Club
'59,'60, Vice-President '60, Beta Club Convention '60;
National Honor Society '60; Masque and Gavel '60; Masque
and Gavel Talent Show '60; Class Treasurer '59; Senior
Play '60; Contest Play '60; Best Supporting Actress Award
'60; Social Committee '57; Convocation Committee '58;
French Club '59; Annual Staff '60; Cromwell Collier
Salesmanship Award '59; Art Award '60.

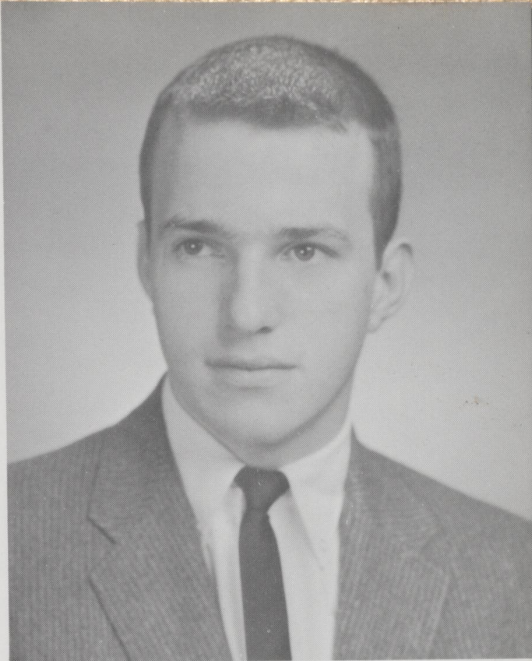


RUFUS LISLE, Jr.
"Rufus"

Entered from Elementary
Glee Club '58,'59,'60; State Music Festival '57; Regional
Music Festival '57; Music Certificate '57; Band '57; Pep
Club '57,'58,'59,'60; Swimming Team '57,'58; State
Swimming Meet '57,'58; Manager, Basketball Team '58;
Student Government '59; Beta Club '58,'59,'60, Beta Club
Convention '59,'60; National Honor Society '60; Masque
and Gavel '60; Masque and Gavel Talent Show '60; Prom
Court '59; Senior Play '60; Contest Play '60; Senior Play
Award '60; Annual Staff, Editor '60; U-Hi Lights Staff '59;
Cromwell Collier Salesmanship Award '59; Boys' State '59;
Marquerite McLaughlin Yearbook Award '60.

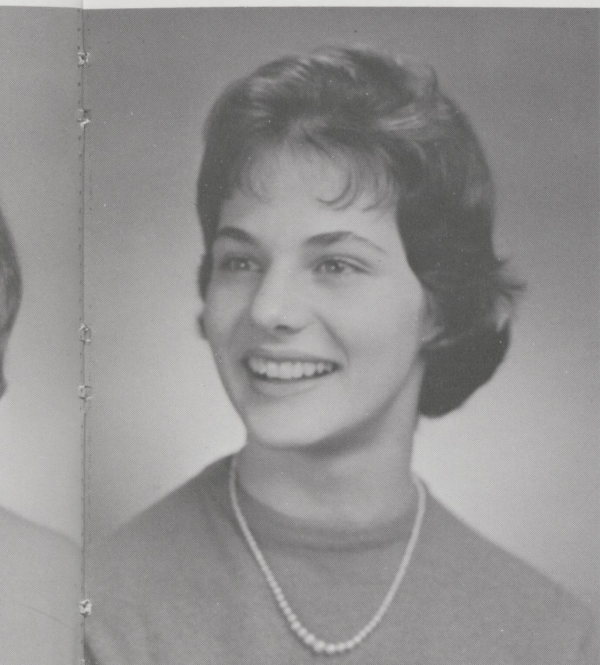
JOHN WILLIAMS LUBY
"John"

Entered from Lexington Catholic '58
Baseball Team '58,'59,'60; Pep Club '59,'60; Basketball
Team '59,'60; Track Team '59,'60; Senior Play '60; Speech
Class Play '60; Social Committee '60; Annual Staff '60;
U-Hi Lights Staff '60.



CAROLYN LIVELY MANSFIELD
"Carolyn"

Entered from Elementary
Glee Club '57,'58,'59,'60; Double Quartet '58; State Music
Festival '58,'59,'60; Fall Chorus '58; All State Chorus '59;
Music Certificate '58,'59,'60; Little Choir '58,'59,'60;
Double Trio '59; Y-Teens '57,'58,'59,'60; Basketball '58,'59,
'60, Swimming '58; Pep Club '57,'58,'59,'60, Secretary '60;
Cheerleader '57; Student Government '60, Secretary '60;
Student Council '58; Student Council Convention '59,'60;
Beta Club '58,'59,'60, Beta Club Convention '59,'60; Masque
and Gavel '58,'59,'60, Treasurer '59, President '60; Masque
and Gavel Talent Show '57,'58,'59,'60; Prom Court '59;
Senior Play '60; Contest Play '59; Best Actress Award '60;
Speech Festival '58,'60; Social Committee '59; Convocation
Committee '60; Annual Staff '60; "Snow Queen" Candidate
'60; Masque and Gavel Speech Award '60.



MARY DILLARD MARR
"Dill"

Entered from Elementary
Glee Club '57,'58,'59; Y-Teens '57; Pep Club '57,'58,'59,
'60, Vice-President '60; Student Government '57, Secretary
'57; Student Council '60, Secretary '60; Beta Club '58,'59,
'60, President '60; Beta Club Convention '58,'59; Prom Court
'59; Class Vice-President '59; Social Committee '58; French
Club '59; Annual Staff '60; Cromwell Collier Salesmanship
Award '59; First Year French Award '59; French Recognition
'60.



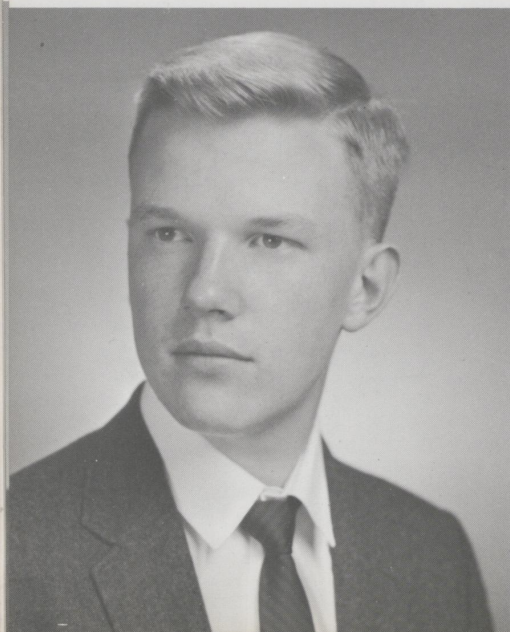
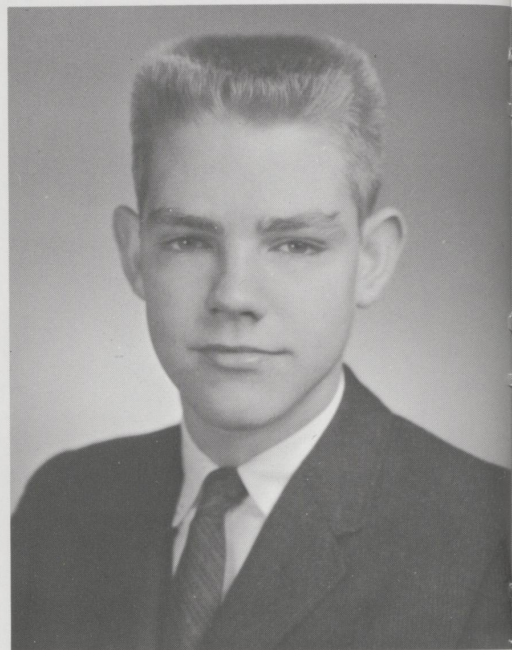


WINIFRED WIDENER MAUSER
"Winnie"

Entered from Elementary
Glee Club '57,'58,'59,'60; State Music Festival '59,'60;
Fall Chorus '58; Little Choir '59,'60; Band '57; Y-Teens '59,
'60, President '60; Y-Teen Convention '60; Pep Club '57,
'58,'59,'60; Student Government '59; Masque and Gavel
'59,'60; Masque and Gavel Talent Show '59,'60; Senior
Play '60; Best Supporting Actress Award '60; Speech Festival
'58,'59,'60; Annual Staff '60; U-Hi Lights Staff '59.

DONALD COLLINS PARIS
"Don"

Entered from Elementary
Pep Club '57,'58,'59,'60; Basketball Team '57,'58,'59;
Baseball Team '57,'58,'59; Student Council '58; Beta Club
'59,'60, Beta Club Convention '60; Prom Court '59; Class
President '59; Convocation Committee '58; U-Hi Lights
Staff '58,'59.



ROBERT ESTILL REEVES
"Bobby"

Entered from Elementary
Regional Music Festival '57; State Music Festival '57;
Music Certificate '57; Band '57; Baseball Team '58; Pep
Club '57,'58,'60; Basketball Team '57,'58; Swimming '57,
'58,'60; Tennis Team '60; State Swimming Meet '57,'58,
'60; Student Government '57,'60, President '57,'60; Class
Treasurer '60; Senior Play '60; Speech Class Play '60;
Speech Festival '60; French Club '60, Vice-President '60;
Beta Club '60.

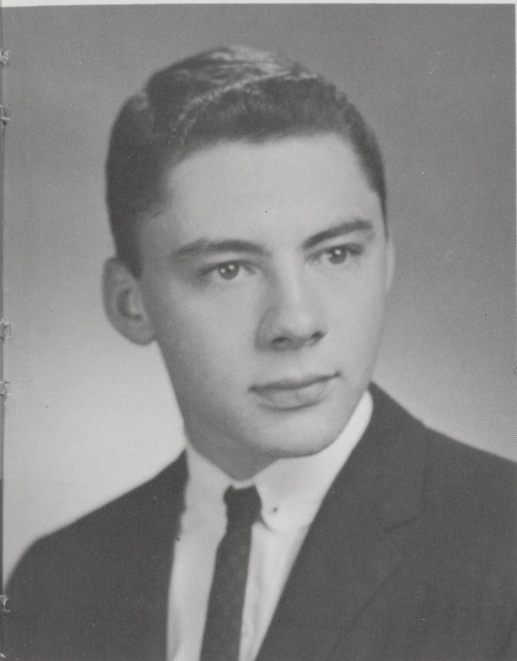
JEANNE BOUCHARD RICH
"Jeanie"

Entered from Elementary
Glee Club '57,'58,'59,'60; State Music Festival '58,'59,'60;
Vocal Music Award '58; Music Certificate '58,'59,'60; All
State Chorus '59; Little Choir '58,'59,'60, Reporter '59,
Vice-President '60; Double Trio '58,'59; Y-Teens '57,'58,
'59,'60, Basketball '58,'60, Swimming '59, Convention '59;
Pep Club '57,'58,'59,'60; Beta Club '59,'60, Beta Club Con-
vention '60; National Honor Society '59,'60, President '60;
Masque and Gavel '59,'60, Vice-President '60; Masque and
Gavel Talent Show '58,'60; Senior Play '60; Speech Festival
'58,'59; French Club '59,'60; Annual Staff '60; U-Hi Lights
Staff, Editor '60; Cromwell Collier Salesmanship Award '59;
National French Award '60; Junior League Vocal Music
Award '60; Enoch Grehan Journalism Award '60.



HARRY LESLIE RUSSELL, Jr.
"Jack"

Entered from Lafayette '56
Pep Club '57,'58,'59,'60; Basketball Team '57,'58,'59;
Swimming Team '57,'58; State Swimming Meet '57,'58;
Student Government '60; Prom Court '59; Class President '58;
Senior Play '60; Speech Class Play '59; Speech Festival '58;
French Club '59.



JOHN ERWIN SASMAN
"Abner"

Entered from Windham High, Willimantic, Connecticut '59
Glee Club '59,'60, President '60; State Music Festival '59,
'60; Boys' Group '59, '60; All State Chorus '59; Baseball Team
'59,'60; Pep Club '59,'60; Basketball Team '59,'60, Captain
'60; Swimming Team '59; Track Team '59; State Swimming
Meet '59; Student Council '59,'60, President '60; Student
Council Convention '60; Masque and Gavel '59,'60; Masque
Gavel Talent Show '59,'60; Class Vice-President '60; Prom
Court '59,'60; Senior Play '60; Contest Play '59,'60; Speech
Class Play '59; World Affairs' Institute '59; Masque and
Gavel Speech Award '60; Beta Club '60.



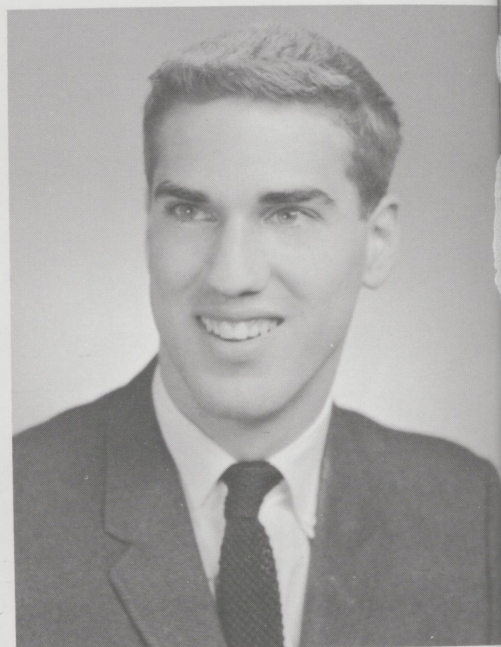


JEANNE BARBEE SHAVER
"Jeanne"

Entered from Elementary
Glee Club '57,'58,'59; Y-Teens '57,'58,'59,'60, Basketball
'57,'58,'59; Pep Club '57,'58,'59,'60, President '60; Best old
Pep Club Member '59; Best new Pep Club Member '58; Beta
Club '59,'60, Secretary '60, Beta Club Convention '60;
National Honor Society '59,'60; Class treasurer '59; Class
secretary '60; Senior Play '60; Annual Staff '60; Girls' State
'59; National Merit Scholarship Finalist '60.

ROBERT WILLIAM SHIER
"Bob"

Entered from Lafayette '59
Baseball Team '59; Pep Club '59,'60; Basketball Team
'59,'60; Swimming Team '59,'60; Tennis Team '59,'60;
Student Council '60; Student Council Convention '60; Prom
Court '59,'60; Class President '60; Senior Play '60; Social
Committee '59; Boys' State '59; Bausch and Lomb Science
Award '60.



CAROLYN LEE STIVERS
"Carolyn"

Entered from Elementary
Glee Club '57,'58,'59,'60; State Music Festival '60; Vocal
Music Award '60; Music Certificate '60; Little Choir '60,
Reporter '60; Y-Teens '57,'58,'59,'60, Basketball '58,'59,
'60, Swimming '58; Pep Club '57,'58,'59,'60; Cheerleader
'57,'58,'59,'60; Student Government '59; National Honor
Society '59,'60, Vice-President '60; Masque and Gavel
Talent Show '58,'60; Prom Court '59,'60; Senior Play '60;
Social Committee '60; Convocation Committee '58; French
Club '59,'60, President '60; Annual Staff '60; U-Hi Lights
Staff '60; Cromwell Collier Salesmanship Award '59; First
Year French Award '59.



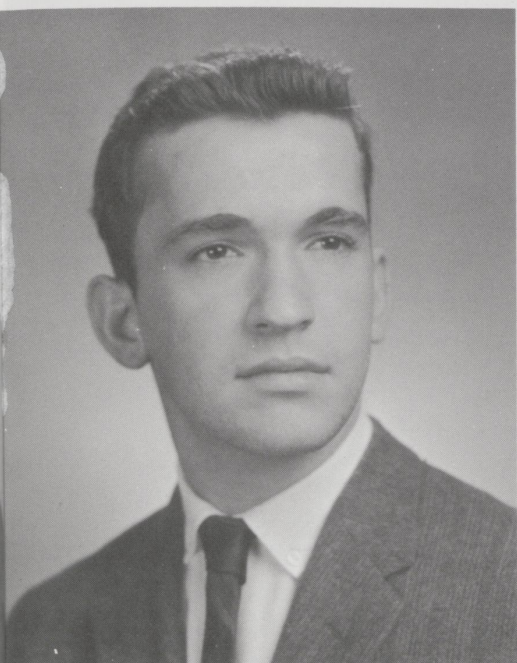
DIANA GAYLE THOMAS
"Diana"

Entered from Lafayette '59
Glee Club '59,'60; State Music Festival '60; Little Choir '60;
Music Certificate '60; Senior Play '60; Speech Class Play
'60; French Club '59; Masque and Gavel '60.



WILLIAM TODD VARELLAS
"Bill"

Entered from Scott County '58
Glee Club '58,'59,'60; Pep Club '58,'59,'60; Speech Class
Play '59; Senior Play '60; Jaycees' Teen-Age Safe Driving
Rodeo '60.



WILLIAM ATEN WARREN
"Bill"

Entered from Kingston High, Kingston, New York, '57
Glee Club '58,'59,'60; State Music Festival '59; All State
Chorus '59; Music Certificate '59; Pep Club '58,'59,'60; Bas-
ketball Team '58,'59,'60, Manager '60; Beta Club '59,'60,
Beta Club Convention '60; Masque and Gavel Talent Show
'59,'60; Senior Play '60; Contest Play '59,'60; Speech Class
Play '59; Speech festival '59,'60; French Club '59; Boys'
State '59; Optomist Club Speech Award '59; Boys' Group '59;
Speech Festival Award '60; Masque and Gavel '60.





BARBARA JO WHEELER
"Jo"

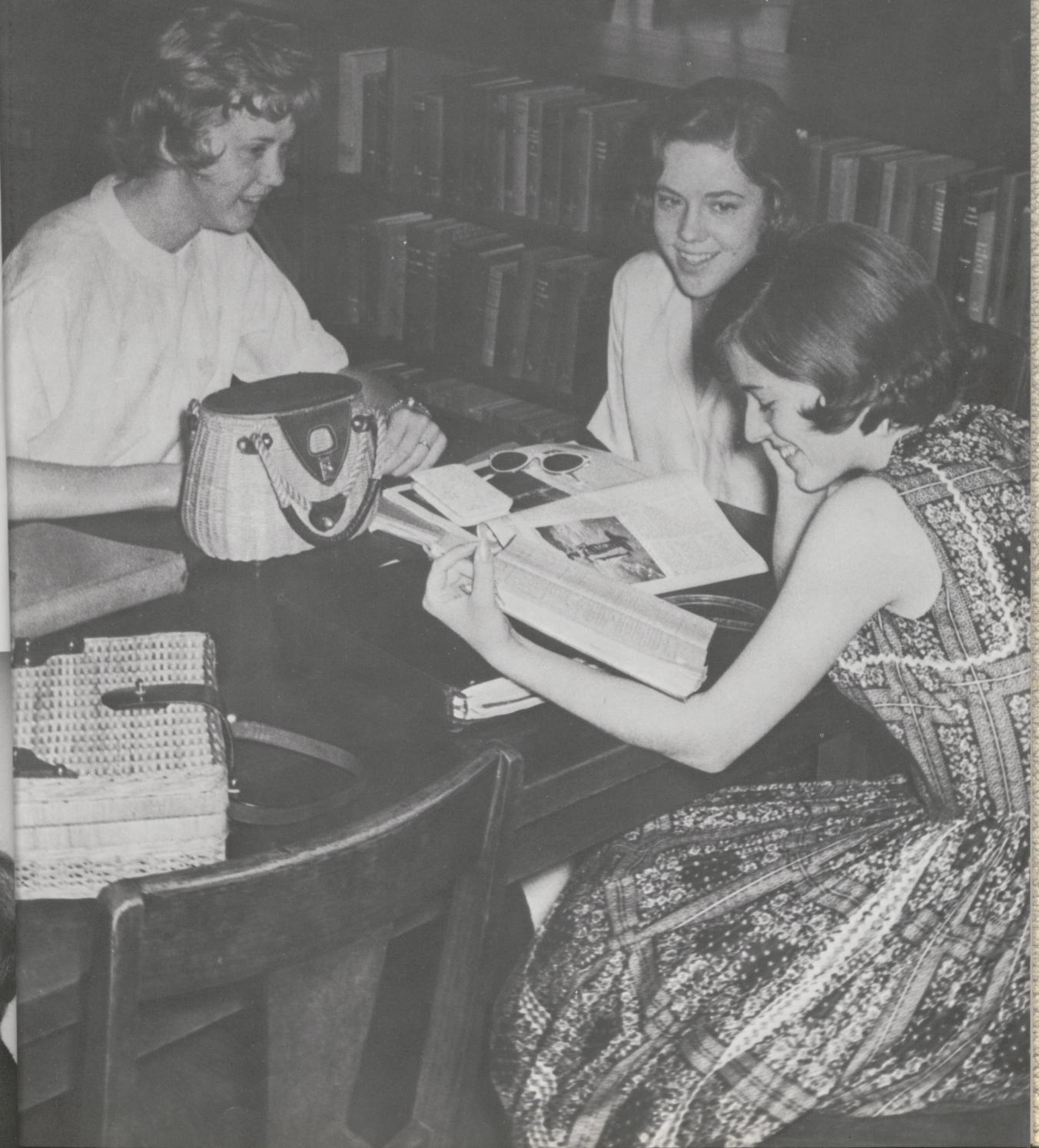
Entered from Lafayette '59
Glee Club '59,'60; Y-Teens '59,'60, Secretary '60, Inter-
Club Council Representative '60; Pep Club '59,'60, Treas-
urer '60; Beta Club '59,'60, Beta Club Convention '60;
Convocation Committee '59; French Club '59.



JANE BARKER HARTFORD
"Bunny"

Entered from Elementary
Glee Club '57,'58,'59; State Music Festival '57,'58,'59;
Music Certificate '57,'58,'59; Little Choir '57,'58,'59; Y-
Teens '57,'58,'59; Pep Club '57,'58,'59; Beta Club '59.

UNDERCLASSMEN



JUNIOR CLASS



FIRST ROW: Jim Coolsen, treasurer, William Wood, vice-president, Barbara Faulconer, secretary, Ed Sasman, president. SECOND ROW: Burton Milward, Betsy Gillis, Sara Gaitskill, Barbara Rath, Gerard Gerhard, Roy Bachmeyer, Elaine Irtz, Suzanne Phelps, Ann Nave, Betty Newbury, Melinda Stivers. THIRD ROW: Elaine O'Hara, Michele Evans, Violet Huffman, Mike Cox, Jack Ireland, Ellen Clark, Lynne Barret, Robert Pattie, Sam Adams, Lee DeJoe, Coley Calloway. FOURTH ROW: Clifton Eaton, Sam Warren, Glen Shepherd, Frank Dickey, Joe Goodwin, Hal Kercheval, Jessica Paris, Karl Eldridge, Bill Turnbull.

SOPHOMORE CLASS



FIRST ROW: Ben Howard, president, Andy Armstrong, vice-president, Phyllis Wall, secretary, Buddy Bishop, treasurer. SECOND ROW: Francis Pattie, Sandy Queen, Sally King, Francis Jewell, Eric Mercer, Robert Hensley, Ann McLean, Cathy Maxson, Mary Sidney Wagner. THIRD ROW: Mary Manly, Garland Barr, Max Schwartz, Steve Price, Pat Witt, Jeanne Miles, David Reeves, Jack Gurnee. FOURTH ROW: Janet Stokes, Susan Jefferson, Edward Gambill, Bill Greathouse, Robert Walker, Joe Miller, Jimmy Stapp, Bill Russell, Bettye Rae Cranfill.

FRESHMAN CLASS



FIRST ROW: Carl Shier, president, Joan Pryor, vice-president, Judy Roach, secretary, Wallace Johnston, treasurer. SECOND ROW: Judy Nuckols, Kate Yates, Sara Thompson, Miriam Gaitskill, Callie Cowden, Dickie Cole, Randy Fishback. THIRD ROW: Carol Bosworth, Barbara Walden, Emily Thompson, Kathy Sparks, Larry Hobbs, Joe Dickey, Jeanette Dale, Skipper Hartford, David Switzer. FOURTH ROW: Charles Mitchell, Suzanna Ready, Landy Dale, Lyle Walker, Fred Irtz, Brint Milward, Richard Wade, Joe McDowell, Ann Combs.

EIGHTH GRADE



FIRST ROW: Susan Clay, president, Jane Wiesel, secretary, Cleve Gambill, treasurer, Charles Nuckols, vice-president. SECOND ROW: Susan Blythe, Patsy New, Cindy Wright, Louise Kelly, Noel Hall, Bill Ellison. THIRD ROW: Mary Platt, Sarann Shepherd, Diane Curry, Nancy Ireland, Betsy Keyes, Dana Paulson, Andy Williams, Joe Cowden. FOURTH ROW: Susan Mansfield, Don Mc Kelvey, David Wagers, Eddy Seay, Mike Reynolds, Bobby Stokes, Kenneth Barrett, Gary Stamper.

SEVENTH GRADE



FIRST ROW: Roger Baker, vice-president, Sam Brown, president, Linda King, secretary, Lee Ireland, treasurer. SECOND ROW: Robert Milward, James Gurnee, Tommy Adams, Harry Scott, Liz Shearer, Fra Vaughan, Holly Elton, Sammie Miller, Jimmy Pyle. THIRD ROW: Lee Newbury, Donna Faulconer, Susan Bolotin, Tommy Witt, Ann Dickey, Phyllis Miles, Leslie Rhodes, Ike Callaway. FOURTH ROW: Kitty Ray, Barbara Meyer, Mike Parks, Miller Welch, Bill Ready, Patty Wade, Sandy Boggs, Ann Arnsperger, Clay Goodwin, Mary Porter.



er.
y

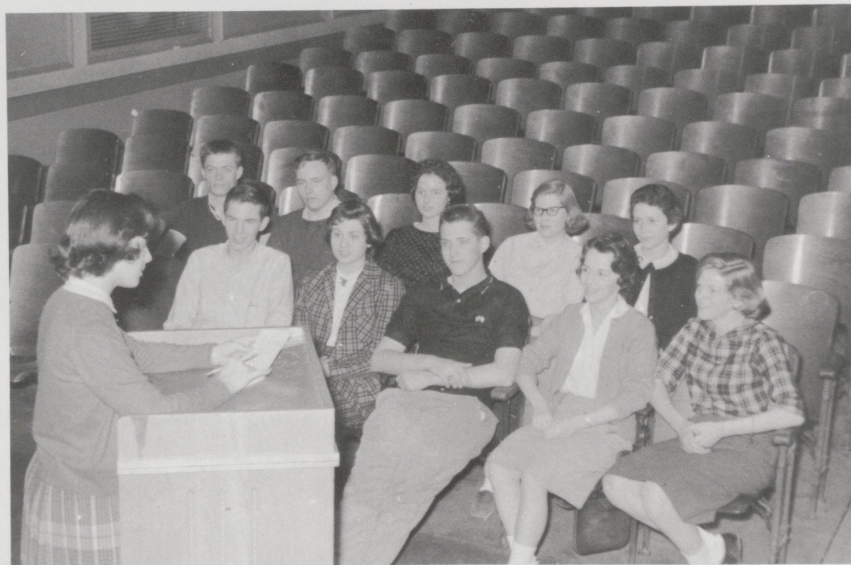
ORGANIZATIONS

BETA Club



FIRST ROW: Missy Bender, Carolyn Mansfield, Libby Honerkamp, vice president, Jeanne Shaver, secretary, Sue Griffin, treasurer, Gerard Gerhard, Dill Marx, president. SECOND ROW: Jeanie Rich, Jo Wheeler, Mike Cox, Don Paris, Bill Warren, Rufus Lisle.

MASQUE AND GAVEL



FIRST ROW: Carolyn Mansfield, president. SECOND ROW: Rufus Lisle, Libby Honerkamp, Bill Harkins, treasurer, Judy Gross, secretary, Jeanie Rich, vice president. THIRD ROW: John Sasman, Bill Harper, Elaine Irtz, Winnie Mauser, Lynne Barrett.

HONOR SOCIETY



Jeanne Shaver, Rufus Lisle, Judy Gross, secretary, Jeanie Rich, president, Carolyn Stivers, vice-president, Libby Honerkamp.

STUDENT COUNCIL



FIRST ROW: Ann Dickey, 7th grade, Mike Cox, vice president, John Sasman, president, Dill Marr, secretary, Susanne Phelps, 11th grade, Emily Thompson, 9th grade. SECOND ROW: Sam Brown, 7th grade, Nancy Cowden, 12th grade, Bob Shier, 12th grade, Frank Dickey, 11th grade, Kathy Maxson, 10th grade, Buddy Bishop, 10th grade, David Switzer, 9th grade.

SENIOR HIGH STUDENT GOVERNMENT



FIRST ROW: Bobby Bostick, vice-president, Carolyn Mansfield, secretary, Bobby Reeves, president. SECOND ROW: Jack Russell, 12th grade, Ann McLean, 10th grade, Garland Barr, 10th grade, Mike Cox, 11th grade, Lee DeJoe, 11th grade, Libby Honerkamp, 12th grade.

JUNIOR HIGH STUDENT GOVERNMENT



FIRST ROW: Joe Cowden, vice president, Callie Cowden, secretary, Joe Dickey, president. SECOND ROW: Kenneth Barrett, 8th grade, Susan Blythe, 8th grade, Lee Ireland, 7th grade, Sarah Thompson, 9th grade, Roger Baker, 7th grade.

FRENCH CLUB



FIRST ROW: Sarah Gaitskill, Bobby Reeves, vice-president, Missy Bender, secretary-treasurer, Jeanie Rich, Carolyn Stivers, president. SECOND ROW: Burton Milward, Betsy Gillis, Melinda Stivers, Betty Newbury, Susanne Phelps, Ann Nave, Sammy Adams, Roy Bachmeyer, Mrs. Evans, sponsor, Robert Pattie, Michele Evans. THIRD ROW: Hal Kercheval, Barbara Faulconer, Lynne Barrett, Clifton Eaton, Jimmy Coolsen.

CONVOCAATION COMMITTEE



FIRST ROW: Noel Hall, 8th grade, Betsy Keyes, 8th grade. SECOND ROW: Judy Knuckles, 9th grade, Phillis Miles, 7th grade. THIRD ROW: Robert Walker, 10th grade, Joe McDowell, 9th grade. FOURTH ROW: Sam Warren, 11th grade, Frances Pattie, 10th grade. FIFTH ROW: Bobby Bostick, 12th grade, Carolyn Mansfield, 12th grade.

SOCIAL COMMITTEE



FIRST ROW: Skiper Hartford, Frances Jewell, Carolyn Stivers, Cleve Gambill. SECOND ROW: Melinda Stivers, Bill Russell, Anne Combs, Karl Eldridge, Susan Mansfield.

SENIOR HIGH PEP CLUB



FIRST ROW: Jeanne Shaver, president, Dill Marr, vice-president, Carolyn Mansfield, secretary, Jo Wheeler, treasurer, Hal Kercheval, sergeant-at-arms. SECOND ROW: Sue Griffin, Missy Bender, Libby Honerkamp, Jeanie Rich, Diana Thomas, Carolyn Stivers, Judy Gross. THIRD ROW: Nancy Cowden, Dick Chamberlain, Chandler Davis, Bobby Bostick, Fred Gilliam, Bob Evans, John Luby. FOURTH ROW: Bill Harper, Bill Harkins, Rufus Lisle, John Sasman, Bill Warren, Don Paris, Bill Varellas, Jack Russell.

SENIOR HIGH PEP CLUB



FIRST ROW: Melinda Stivers, Judy Gross, Carolyn Stivers, Lynne Barrett, Barbara Faulconer, Jeanie Miles, Sally King, Sandy Queen. SECOND ROW: Roy Bachmeyer, Michele Evans, Violet Huffman, Barbara Rath, Sarah Gaitskill, Lee DeJoe, Susanne Phelps, Andy Armstrong, Gerard Gerhard, Ellen Clark, Frances Jewell, Andy Nave, Betty Newbury, David Reeves, Jimmy Stapp, Eric Mercer, Phyllis Wall. THIRD ROW: Elaine O'Hara, Mary Wagner, Bill Greathouse, Max Swartz, Edward Gambill, Joe Miller, Frances Pattie, Ben Howard, Ann McLean, Kathy Maxson, Betsy Gillis, Jessica Paris, Pat Witt, Jack Ireland, Burton Milward, Elaine Irtz. FOURTH ROW: Sammy Adams, Betty Cranfil, Bill Russell, Buddy Bishop, Coley Calloway, Karl Eldridge, Jim Coolsen, Adrian Wilkes, Frank Dickey, Bill Turnbull, Robert Pattie, Clifton Eaton, William Wood, Ed Sasman, Joe Goodwin, Mike Cox, Daniel Holman, Robert Wakler, Sam Warren, Glen Shepherd, Jack Gurnee, Garland Barr.

JUNIOR HIGH PEP CLUB



FIRST ROW: Anne Combs, president, Joan Pryor, vice-president, Judy Roach, secretary, Emily Thompson, treasurer. SECOND ROW: Miriam Gaitskill, Phyllis Miles, Susan Boliton, Leslie Rhodes, Lee Newbury, Sammie Miller, Donna Faulconer, Bev Paris, Dana Paulson, Ann Dickey, Fra Vaughn, Liz Shearer, Louise Kelly. THIRD ROW: Patsy New, Jane Wiesel, Dianne Curry, Ike Calloway, Harry Scott, Noel Hall, Roger Baker, Jim Pyle, Skipper Hartford, Betsy Keyes, Sindy Wright, Sarah Thompson, Callie Cowden, Carol Bosworth, Sarann Shepherd. FOURTH ROW: Mary Porter, Clay Goodwin, Linda King, Susan Clay, Jeanette Dale, Susan Mansfield, Susan Blythe, Kathy Sparks, Barbara Walden, Kate Yates, Judy Nuckols, Mary Platt, Patty Wade, Nancy Ireland. FIFTH ROW: Dickie Cole, David Switzer, Lyle Walker, Charles Mitchell, Landy Dale, Carl Shier, Brint Milward, Richard Wade, Bill Ellison, Wallace Johnston, Larry Hobbs, Sam Brown, Joe Dickey.

EXECUTIVE BOARD



Melinda Stivers, Dill Marr, Jeanne Shaver, Hal Kercheval, Carolyn Mansfield, Sally King.

ANNUAL STAFF



FIRST ROW: Jeanie Rich, Carolyn Mansfield, Rufus Lisle, Judy Gross, Carolyn Stivers, Winnie Mauser, Missy Bender. SECOND ROW: Sue Griffin, Libby Honerkamp, Dill Marr, Jeanne Shaver, Don Paris, Nancy Cowden.

Editor	Rufus Lisle
Assistant Editor	Judy Gross
Business Manager	Jeanne Shaver
Advertising Manager	Libby Honerkamp
Advertising Assistant	Missy Bender
Circulation Manager	Carolyn Stivers
Circulation Assistant	Nancy Cowden
Activities Editor	Winnie Mauser
Senior Activities Editor	Carolyn Mansfield
Class Editor	Jeanie Rich
Organization Editor	Dill Marr
Sports Editor	Don Paris
Art Editor	Sue Griffin
Photographers	Bill Turnbull Mr. Jess Gardner
Faculty Advisor	Mr. Dick Stofer



U-HIGH LIGHTS STAFF



FIRST ROW: Mrs. Cocanougher, Jeanie Rich, Judy Gross. SECOND ROW: David Switzer, Nancy Cowden, Betsy Gillis, Bill Turnbull, Barbara Faulconer, Bobby Bostick, Joan Pryor.

Editor	Jeanie Rich
Assistant Editor	Judy Gross
Make-Up Editor	Betsy Gillis
Assistant Make-Up Editor	Nancy Cowden
Exchange Editor	Barbara Faulconer
Sports Editor	Bobby Bostick
Junior High Editor	Joan Pryor
Junior High Sports Editor	David Switzer
Photographer	Bill Turnbull
Faculty Adviser	Mrs. Robert Cocanougher

Y-TEENS



FIRST ROW: Winnie Mauser, president, Nancy Cowden, vice-president, Jo Wheeler, secretary, Libby Honerkamp, treasurer. SECOND ROW: Jean Proyr, Susanne Phelps, Ellen Clark, Phyllis Wall, Missy Bender, Frances Jewell, Judy Gross, inter-club council representative. THIRD ROW: Sue Griffin, Janet Stokes, Elaine Irtz, Carolyn Mansfield, Jeanie Rich, Sally King, Sarah Gaitskill, Malinda Stivers, Anne McLean. FOURTH ROW: Cathy Maxson, Betsy Gillis, Lynne Barrett, Frances Pattie, Caroline Stivers, Barbara Faulconer, Jeanie Miles, Pat Witt, Jeanne Shaver.

Y-TEENS BASKETBALL TEAM



FIRST ROW: Lynne Barrett, Jeanie Rich, Carolyn Mansfield. SECOND ROW: Jo Wheeler, Pat Witt, Barbara Faulconer, Betsy Gillis, Melinda Stivers.

mer-
ances
tz,
OW:
es,

arbara



ACTIVITIES

SPRING PROGRAM



GLEE CLUB

DOUBLE TRIO



LEFT TO RIGHT: Missy Bender, Nancy Cowden, Lynn Barrett, Linda Ethington, Barbara Faulconer, Ellen Clark, Elaine Irtz.

LITTLE CHOIR



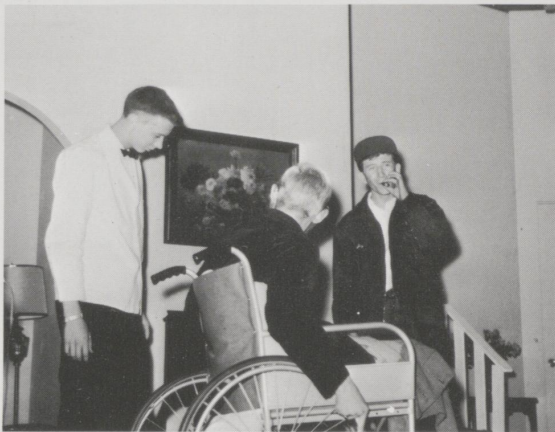
MEMBERS: Sara Thompson, Barbara Rath, Joan Pryor, Bettye Rae Cranfill, Lynn Barrett, Elaine Irtz, Ellen Clark, Carolyn Stivers, Diana Thomas, Libby Honerkamp, Linda Ethington, Phyllis Wall, Betsy Gillis, Sally King, Winnie Mauser, Judy Gross, Missy Bender, Barbara Faulconer, Carolyn Mansfield, Jeanie Rich, Nancy Cowden, Sarah Gaitskill, Kathy Sparks, Lee DeJoe. ALTERNATES: Carol Bosworth, Miriam Gaitskill, Mary Manly, Cathy Maxson, Elaine O'Hara, Jeanie Miles.

ALL STATE CHORUS



LEFT TO RIGHT: Barbara Rath, Lynn Barrett, Elaine Irtz, Joe Dickey, William Wood, Frank Dickey, Bill Turnbull, Mike Cox, Karl Eldridge, Nancy Cowden, Barbara Faulconer, Missy Bender, Sarah Gaitskill.

SENIOR PLAY
"THE MAN WHO CAME TO DINNER"



TALENT SHOW



JUNIOR PROM COURT



LEFT TO RIGHT: Mike Cox, Ann Nave, William Wood, Lee DeJoe, Frank Dickey, Barbara Faulconer, Karl Eldridge, Melinda Stivers, Nancy Cowden, Queen, Ed Sasman, President of Junior Class, Carolyn Stivers, Bill Harkins, Linda Ethington, Bob Shier, Missy Bender, John Sasman, Judy Gross, Bobby Bostick.

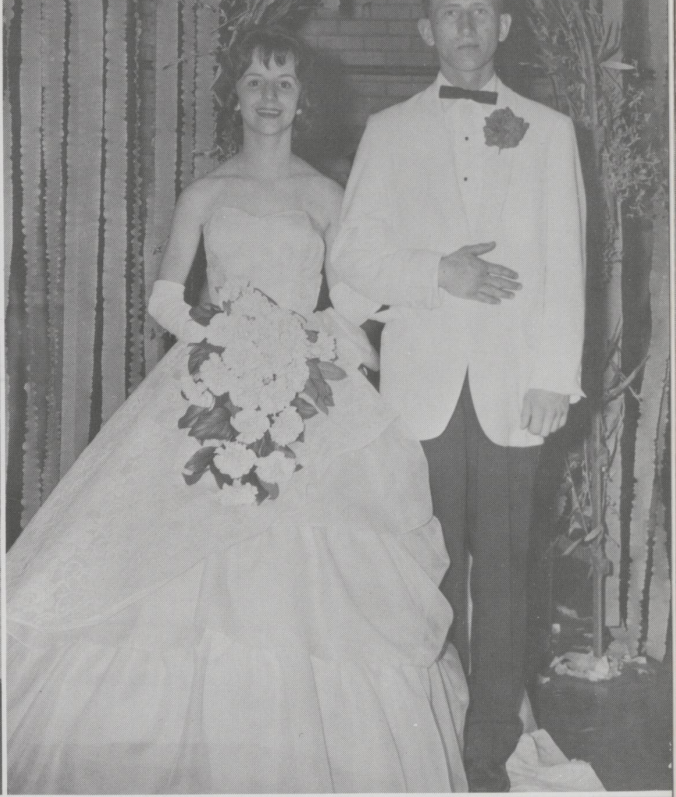


Nancy Jeanne Cowden, Queen, Edward Sasman, President.

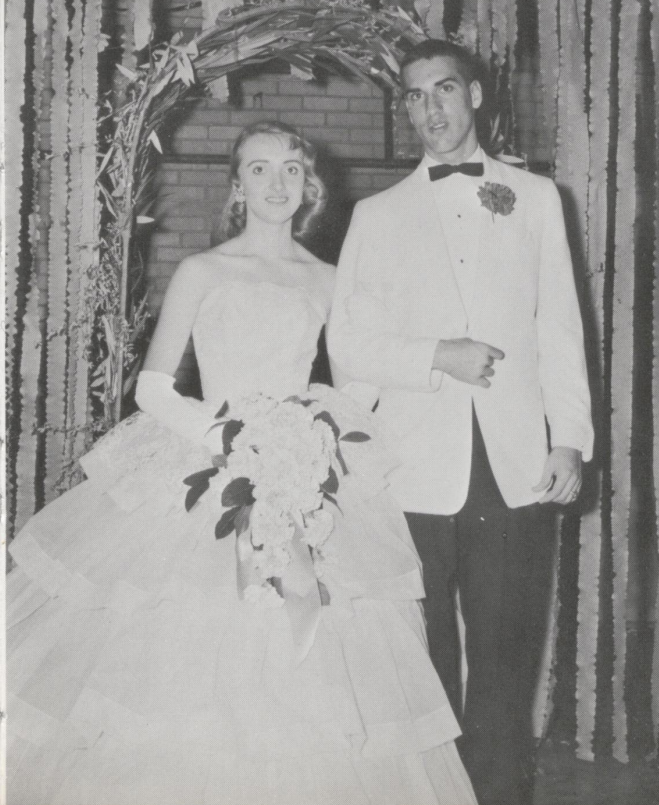
Carolyn Stivers
and
Bill Harkins



Judy Cross
and
Bobby Bostick



Linda Ethington
and
Bob Shier



Missy Bender
and
John Sasman



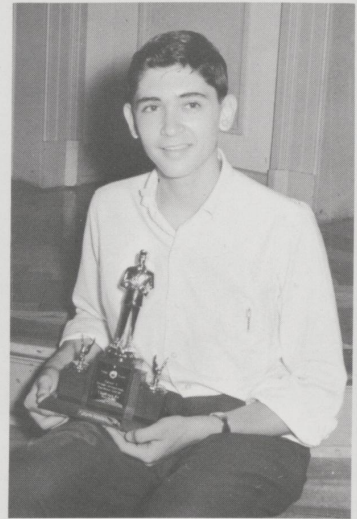
HONORS DAY



New initiates of National Honor Society: Betsy Gillis, Mike Cox, Jim Coolsen, William Wood.



French Award Winners: Carolyn Stivers, Dill Marr, Jeanie Rich.



Joe Miller, winner of the Optimist Speech Trophy.



Initiates of Beta Club: Phyllis Wall, Francis Jewell, Ann McLean, Judy Gross, Betsy Gillis, William Wood, Ed Sasman, John Sasman, Frank Dickey, Bobby Reeves.



Jeanie Rich, Enoch Grehan Journalism Award; Judy Gross, Enoch Grehan and Marguerite McLaughlin Awards, Chi Delta Phi English Award, Transylvania Scholarship; Rufus Lisle, Marguerite McLaughlin Yearbook Award; Betsy Gillis, Smith College English Award; Carolyn Mansfield and John Sasman, Northwestern University Speech Award.



Initiates of Masque and Gavel: Barbara Faulconer, Diana Thomas, Bill Warren, Joe Miller, Betsy Gillis.

SPORTS



CHEERLEADERS



GROSS



STIVERS



FAULCONER



BARRETT



KING

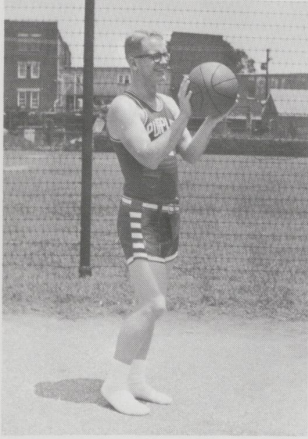


M,
STIVERS

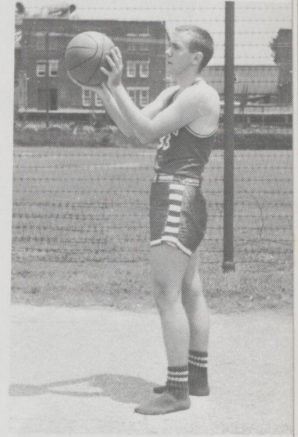


MILES

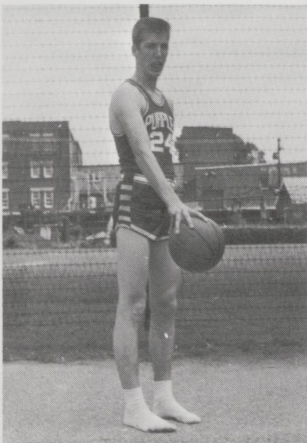
MAINSTAYS



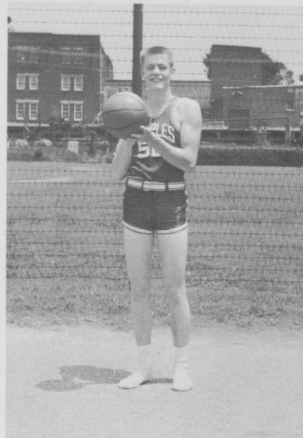
G
I
L
L
I
A
M



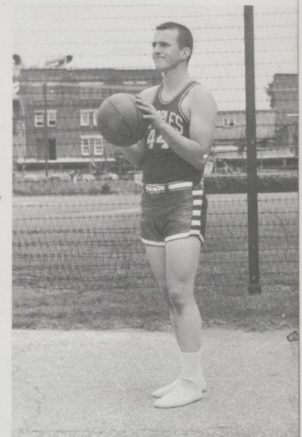
R
O
X



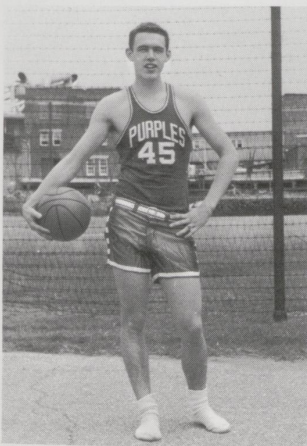
E.
S
A
S
M
A
N



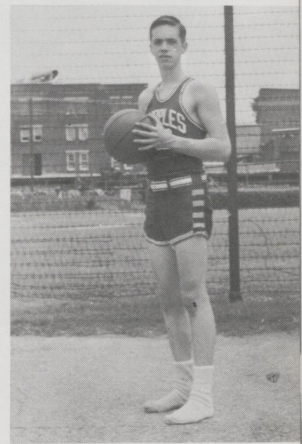
J
S
A
S
M
A
N



L
U
B
Y



E
L
D
R
I
D
G
E



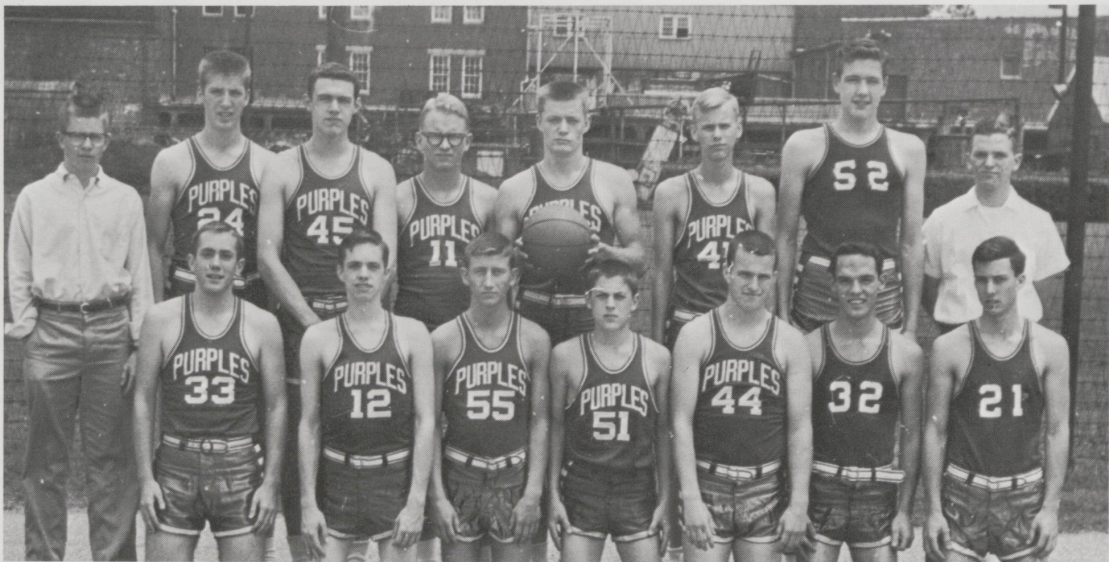
D
I
C
K
E
Y

SENIOR HIGH CHEERLEADERS



FIRST ROW: Barbara Faulconer, Judy Gross, Carolyn Stivers, Sally King. SECCND ROW: Lynne Barrett, Jeanie Miles.

SENIOR HIGH BASKETBALL TEAM



FIRST ROW: Mike Cox, Frank Dickey, Bobby Bostick, Sam Adams, John Luby, Glen Shepherd, Sam Warren.
SECOND ROW: David Switzer, Ed Sasman, Karl Edlridge, Fred Gilliam, John Sasman, Jim Coolsen, Bill Turnbull, Fred Irtz.

JUNIOR HIGH CHEERLEADERS



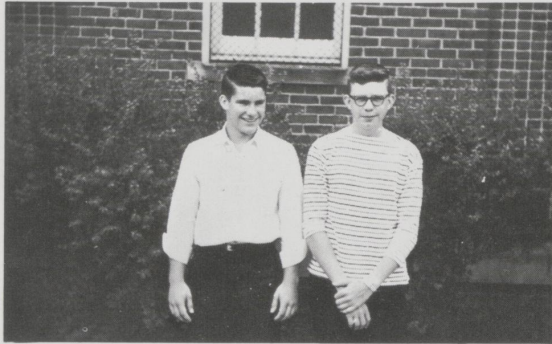
FIRST ROW: Dana Paulson, Betsy Keyes, Sara Thompson, Callie Cowden. SECOND ROW: Jane Wiesel, Jeanette Dale, Kate Yates, Judy Nuckols, Susan Mansfield.

JUNIOR HIGH BASKETBALL TEAM



FIRST ROW: David Switzer, Joe Dickey. SECOND ROW: Jimmy Pyle, Dickie Cole, Sam Brown, Gary Stamper, Ike Calloway. THIRD ROW: Carl Shier, Brint Milward, Mike Reynolds, Richard Wade, Bill Ready, Lyle Walker.

Track Team



Andy Armstrong, Ben Howard.

Tennis Team



FIRST ROW: Buddy Bishop, Bob Shier, Ellen Clark, Mike Cox, Jim Coolsen. SECOND ROW: Carl Shier, Davis Switzer, Garland Barr, Bobby Reeves.

Swimming Team



FIRST ROW: Sandy Queen, Barbara Walden.
SECOND ROW: Eric Mercer, Jim Boyd, Andy Armstrong, David Reeves, Jack Gurnee, Dickie Cole.
THIRD ROW: David Switzer, Edward Gambill, Ben Howard, Eddie Seay, Bob Shier, Richard Wade, Bobby Reeves.

Baseball Team



FIRST ROW: Bill Ellison, Dickie Cole, Lyle Walker, David Switzer, Bobby Stokes, Joe Miller, Roy Bachmeyer, Joe Dickey, Andy Williams. SECOND ROW: John Luby, Robert Walker, Frank Dickey, John Luby, Fred Gilliam, Ed Sasman, John Sasman, Jim Coolsen, William Wood, Bob Evans.

SENIOR ACTIVITIES



BACCALAUREATE



The Baccalaureate Services were held May 29 at Christ Episcopal Church. The Rev. Robert Estill preached the sermon.

COMMENCEMENT



Commencement exercises were conducted in the University High Auditorium on June 4, 1960. The Reverend Steadman Bagby gave the Invocation and Benediction. The Commencement address was given by Dr. Irvin Lunger, and Dr. Erwin H. Sasman presented the diplomas.

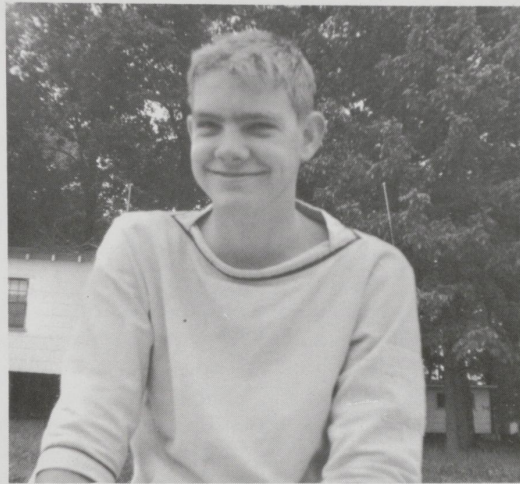
SENIOR BREAKFAST



The Senior Breakfast was June 4 at the home of Mr. and Mrs. John W. Marr. Dill Marr was hostess.



SKIP DAY



SENIOR WILL

In our departure from the hallowed halls of University High, we, the Senior Class of 1960, hereby leave this our last Will and Testament for posterity.

- I, Bobby Bostick, leave my seat in chemistry class to Lee DeJoe.
We, Missy Bender and Jeanie Rich, leave the "Bird Courting Song" to Mary Manly, Judy Boyd, and Ann Combs.
I, Dick Chamberlain, leave to go home and try to put my car together.
I, Nancy Cowden, leave all my bubble gum to Mr. Stofer.
I, Chandler Davis, leave all my good speech habits to Joe Miller.
I, Linda Ethington, leave to join Herky.
I, Bob Evans, leave with the world's largest collection of borrowed pencils.
I, Fred Gilliam, leave my ability to sleep in class to Hal Kercheval.
I, Suzanne Griffin, leave my artistic ability to Suzanne Phelps.
I, Bill Harkins, leave my ability to bump my head on door frames to Gerard.
I, Bill Harper, leave to pump gas at Mammoth Garage.
I, Barry Hayes, leave my mountain accent to Mrs. Evans.
I, Libby Lou Honerkamp, leave to solve the world's problems.
I, Rufus Lisle, leave, taking my wild parties with me and telling the Juniors to find their own entertainment.
We, Carolyn Mansfield and Judy Gross, leave and take our affection for Mr. Gardner with us.
I, Dill Marr, leave my ability to get out of reading the Bible in convocation to Hal Kercheval.
I, Winnie Mauser, leave the presidency of the "'02 Taxi Service" to anyone who has a car.
I, Don Paris, leave my good attitude to the teachers.
I, Bobby Reeves, leave my French vocabulary to Lynne Barrett.
I, Jack Russell, leave my charm, wit, good personality, good looks, and my cheerful moods to anyone who can qualify to possess such "gifts."
I, John Sasman, leave my inability to make a will to my brother, Ed.
I, Jeanne Shaver, leave in my T-Bird.
I, Bob Shier, leave my Johnson and Johnson adhesive tape to Mike Cox.
I, Carolyn Stivers, leave my ability to be SLOW and snowed to Melinda.
I, Diana Thomas, leave my old romances to anybody who can tolerate them.
I, Bill Warren, leave my ability to be kicked off the basketball team to Bill Russell.
I, Jo Wheeler, leave my ability to run office errands to Mrs. Taylor
I, John Luby, leave my 4493 tardy excuses to Betsy Gillis.
I, Bill Varellas, leave alone to return to my farm.
I, Bunny Hartford, leave to complete my college education.



Nancy
Cowden



Bobby
Reeves



Rufus
Lisle, Jr.



Nancy Cowden



Jo Wheeler



Dill Marr



Don Paris



Jeanie Rich



Bob Evans



Judy Gross



Bobby Reeves



Bobby Bostick



Bill Warren



Bob Shier



Sue Griffin



Winnie Mauser



Chandler Davis



Rufus Lisle, Jr.



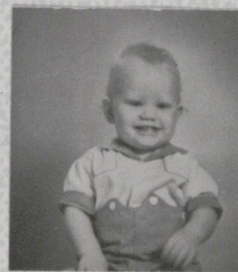
Bill Harkins



Missy Bender



Libby Honerkamp



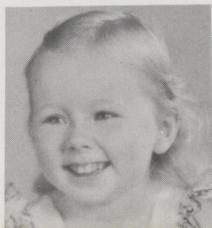
Fred Gilliam

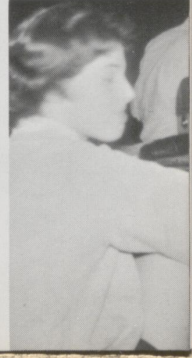


Carolyn Mansfield

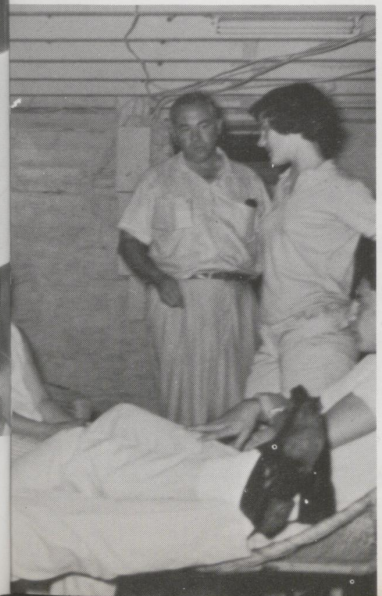
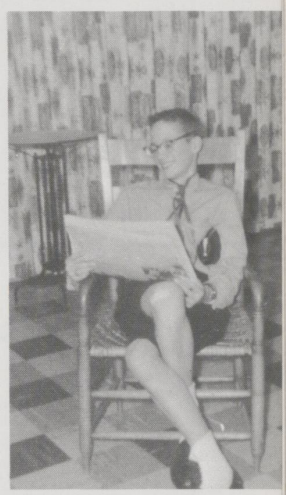
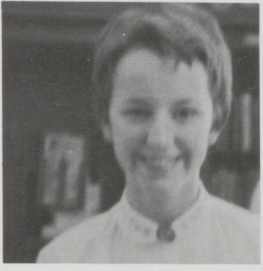


Jack Russell









**KERR BROS.
AMBULANCE SERVICE**

2-3343

VICTOR BOGART CO. INC.

Jewelers

Established 1833

127 West Main St.

Lexington

Ky.

*Compliments
of*

FAMILY DRIVE-IN THEATRE

DICK ARNSPIGER

GENERAL INSURANCE

“Service Since 1879”

120 North Upper

Telephone 2-2470

Sterling Silver—Crystal—Fine China

P. EDW. VILLEMINT

Jeweler—Silversmith

Lexington, Kentucky

105 West Main Street
Telephone 2-3210

368 Southland Dr.
Telephone 7-7321

BAYNHAM SHOE CO.

“Shoes of Distinction for Over 41 Yrs.”

MEN:

French—Shriner—Bass—Freeman—Imperial

WOMEN:

Palizzio—Delmanette—Natural Bridge—Capezio

Dickerson Archlock—Sandler—deMarchi

Italian Casuals—Penaljo—Fortunet—Johansen

CHILDREN:

Simplex—Flexies—Billikens—Young Capezio

135 E. Main 2-6655

THIS SPACE

IS RESERVED

FOR AN AD

IN NEXT YEAR'S ANNUAL

AUTOGRAPHS

Dr.
21



AUTOGRAPHS

