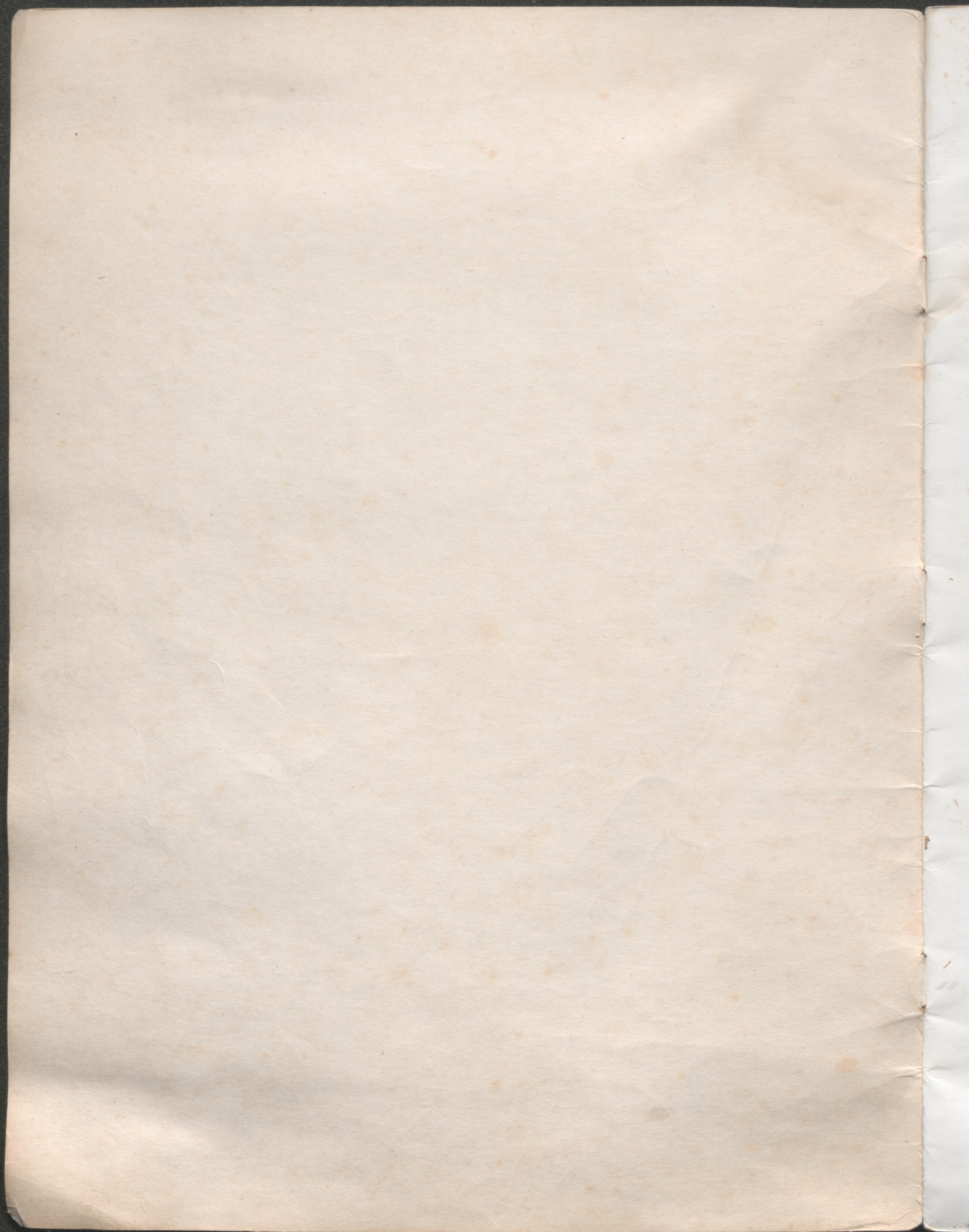


**The  
U-Hi Lights**

**1 9 4 2**



# THE U-HI LIGHTS

## 1942

•  
BETTY ANNE GINOCCHIO  
BENJAMIN FRANKLIN BUCKLEY, III  
Editors-In-Chief

•  
MARY JANE GALLAHER  
News Editor

•  
BILLY MAC RHOADS  
JACK FIELD  
Sports Editors

•  
MR. WALLACE N. BRIGGS  
Faculty Adviser

•  
Published by  
**The Senior Class**  
Of the University High School  
Lexington, Kentucky

## FOREWORD

This senior class is the first to have completed all of the grades from the first through the twelfth in the University School. Fourteen of the graduating class were among the twenty-seven who entered the first grade in the fall of 1930. The graduating class now has forty-one members. The newer members have made a worthy contribution to the group.

The University school is proud of these young people. We are expecting each of them to make their full contribution to our social order, whether it be in war or peace. They are intelligent, co-operative, and have the good sense and ability to face reality squarely.

The bonds of friendship and fellowship are strong among these seniors. Sharing in work and play, enjoyment and sorrow, success and failure, has welded them together as only close school ties can.

To the seniors, the University School wishes for each of you happiness and success in a full life of helpfulness. Strive diligently to maintain the friendships made during your years at University School. The school will always stand by you and help you. Come back to see us often.

J. D. WILLIAMS



J. D. WILLIAMS  
*Director*

## FACULTY

GRACE ANDERSON  
*English*

HELEN BELSER  
*Seventh Grade*

SUSAN CLAY  
*Typing and Shorthand*

W. N. BRIGGS  
*Speech and Dramatics*

J. L. KEFFER  
*Chemistry and Mathematics*

LUCY G. WOOD  
*Librarian*

LELA MASON  
*Music*

D. C. KEMPER  
*Science and Coach*

ANNA B. PECK  
*History*

HELEN C. RANDLE  
*Home Economics*

MARTHA SHIPMAN  
*Eighth Grade*

LAURA TOPHAM  
*French and Spanish*

MARY WEST  
*Latin*

RUTH HAINES  
*Art*

**S**

**E**

**N**

**I**

**O**

**R**

**S**

# S E N I O R S



JESSE ADAMS

*"Knowledge will not be acquired without pains and applications."*

Entered from Elementary School; All State Orchestra 40, 41; U-Hi Orchestra 39, 40, 41, 42; U-Hi Mixed Glee Club 39, 40, 41, 42; All State Chorus 40, 41; Hi-Y 39, 40, 41, 2; U-Hi Lights 40, 41, 42; Basketball "B" Team 39, 40, 41, 42; Senior Play Cast 42; Student Government 39, 40, 42; Intramurals 39, 40, 41, 42; Cello Solo in Music Contest 40; Outing Club 39, 40, 41; Boys Glee Club 39, 40, 41; String Quartet 39, 40, 41.

BETTE ANN ALLEN

*"The more the talents, the more they are developed."*

Entered from Morton in 1939; Glee Club 39, 40; Radio Plays 41, 42; Masque and Gavel 42; Forensic Speech Tournament 42; Prompter for Senior Play 42; Girl Reserves 39, 40, 41, 42; Outing Club 39, 41; U-Hi Lights Staff 42; National Dance Review 39.

STEVE BANAHAN

*"Be always merry as ever you can for no one delights in a sorrowful man."*

Entered from St. Joseph's Prep School in 1941; Radio Plays 41; Hi-Y Club 41, 42; Stage Crew for Senior Play 42.

BETTY BROWN

*"Hospitality I have found as universal as the face of man."*

Entered from Elementary School; Student Government 38, 39; Secretary 39; U-Hi Lights Staff 38, 39, 40, 41; Feature Editor 42; Mardi Gras Court 39, 41; French Club Charter Member 38; Glee Club 38, 39, 40; National Honor Society 41, 42; Intramurals Vice President 40, 41; President 41, 42; Girl Reserves 38, 39, 40, 41; Treasurer 39; Vice President 40; Secretary of Senior Class 42; Senior Play costumes 42; Outing Club 40; Speech Club 39, 40; Junior Issue 41; Senior Issue 42; Social Committee 40, 41; Bible Study 42.

EWING BROWN

*"Character, that divine gift that makes a woman charming."*

Entered from Elementary School; Intramurals 38, 39, 40, 41, 42; U-Hi Lights Staff 38, 39, 40; Feature Editor 41, 42; Delegate to Student Institute of National Government 42; Social Committee 38, 39, 40, 41, 42; Girls Glee Club 38, 39, 40, 41, 42; Mixed Glee Club 38, 39; Sate Music Contest 38, 39, 40, 41; Representative of Former Queen of Mardi Gras 39, 40, 41, 42; President of Class 38, 39; Vice President of Class 39, 40, 41, 42; Treasurer of Class 41, 42; Speech Club 40, 41; Outing Club 39, 40, 41, 42; Vice President of Outing Club 41, 42; Representative to Queen Bee Dance 39; Girl Reserves 39, 40, 41, 42; Junior Issue 41; Senior Issue 42; Senior Play Cast 42; Attendant to Prom Queen 41; Prom Queen 42; Bible Study 41, 42; Tennis Sports Manager in Intramurals 40, 41.

FRANKLIN BROWN

*"None but the wise man can employ leisure well."*

Entered from Lafayette 41, 42; Business Manager for U-Hi Lights 42; Set Designer for Senior Play 42; Senior Issue 42; Radio Plays 41, 42; Dramatics 41, 42.

# S E N I O R S

## JACK BUCHER

*"A little nonsense now and then is relished by the best of men."*

Entered from Lexington Junior High in 38; Junior High Basketball 38, 39; U-Hi Lights Staff 41, 42; Intramurals 38, 39, 40; Varsity Basketball 40, 41, 42; Hi-Y 40, 41; Attendant to Prom Queen 41; Senior Play Stage Crew 42; U-Club 41, 42; Outing Club 38, 39, 40, 41; President Speech Club 40; Glee Club 39, 40; Radio Play 42; Bible Study 42; "B" Team Basketball 39, 40; Mardi Gras Court 40.

## BEN BUCKLEY

*"Folly and learning oft dwell together."*

Entered from Elementary School; Intramurals 38, 39; U-Hi Lights 39, 40; Associate Editor 41, 42; Basketball, "B" Team 39, 40, "A" Team 41, 42; Student Government 40, 41; Delegate to Southern Association of Student Government 40, 41; Social Committee 39, 40, 41, 42; Hi-Y 38, 39, 40, 41; Class President 41; Masque and Gavel 40, 41, 42; Senior Play 42; Outing Club 39, 40, 41, 42; Prom Attendant 42; Radio Plays 42; U-Club 41, 42; Mardi Gras Attendant 41, 42; Speech Club 41; Bible Study 41, 42.

## SALLY BUCKNER

*"Be good, do good, and you will be happy."*

Entered from Elementary School; U-Hi Lights Staff 38, 39, 40, 41, 42; Mardi Gras Court 39, 42; French Club 38, 39, 40, 41, 42; Girls Glee Club 38, 39, 40, 41, 42; Girls Trio 40, 41, 42; All State Chorus 41, 42; Girls Intramurals 38, 39, 40, 41, 42; Girl Reserves 38, 39, 40, 41; Radio Plays 41, 42; Secretary of Freshman Class 38, 39; Senior Play Publicity 42; French Play 39; Bible Study 42; Junior Issue 41; Senior Issue 42; Attendant to Prom Queen 41, 42.

## JEANNE BUREAU

*"Health and Happiness."*

Entered from Elementary School; Glee Club 38, 40, 41, 42; Outing Club 38, 40; Girl Reserves 38, 40, 41, 42; Intramurals 38, 40, 41, 42; Radio Plays 41, 42; One Act Play 41, 42; Senior Play Make Up 42.

## BILL CHAMBERS

*"A man of honor is always faithful to his word."*

Entered from Elementary School; Orchestra 39, 40, 41, 42; Boy's Glee Club 39, 40, 41, 42; Masque and Gavel 42; Hi-Y Club 39, 40, 41, 42; U-Hi Lights Staff 41, 42; Intramurals 39, 40, 41, 42; Hi-Y Program Committee 41; All State Orchestra 42; Junior High Basketball Team 39, 40; Outing Club 39, 40, 41; Mixed Glee Club 39, 40, 41; Basketball Team "B" 40, 41, "A" 41, 42; Junior High Track Team 40; Radio Plays 41, 42;

## FRANCES DANIEL

*"Sweets to the Sweet."*

Entered from Maxwell School; Intramurals 38, 39, 40, 41, 42; Glee Club 38, 39, 40, 41, 42; Attendant to Prom Queen 41, 42; U-Hi Lights Staff 42; Girl Reserves 38, 39, 40, 41, 42; Modern Dance Revue 42; Senior Play Properties 42; Secretary of Intramurals 41; Outing Club 38, 39, 40, 41, 42; Senior Issue 42; Speech Club 41; Dramatics 42; Bible Study 42; U-Club 42.



# S E N I O R S



DICK DILLON

*"A man's best friends are his ten fingers."*

Entered from Withrow High School, Cincinnati; Assistant business manager of Senior Play 42; Hi-Y 42.

RUTH DIMOCK

*"A thing of beauty is a joy forever."*

Entered from Elementary School; Glee Club 38, 39, 40, 41, 42; Outing Club 38, 39, 40, 41, 42; Girl Reserves 38, 39, 40, 41, 42; Bible Study 42; Intramurals 38, 39, 40, 41, 42; Mardi Gras Court 40; Queen of Mardi Gras 42; U-Hi Lights Staff 39, 40, 41, 42; Senior Play 42; Speech Club 39, 40; Attendant to Junior Prom Queen 41, 42; Junior Issue 41; Senior Issue 42; Vice President of Senior Class 42; French Club 38, Charter Member.

BILL EMBRY

*"Politeness goes far, yet costs nothing."*

Entered from Ashland School; Hi-Y 39, 40, 41, 42; President of Hi-Y 42; Delegate to Hi-Y Congress 41; President of Student Government 41, 42; Social Committee 40, 41; Golf Team 39, 40, 41, 42; Outing Club 39, 40, 41, 42; Junior High Basketball Team 38, 39; Assistant Sports Editor 41, 42; U-Hi Lights Staff 40, 41, 42; Senior Play Cast 42; Radio Plays 42; Member of Y. M. C. A. Leadership Corps; Bible Study 39, 40, 41, 42; Member of Hole In One Club; U-Club 41, 42; Junior Issue of U-Hi Lights 41; Senior Issue of U-Hi Lights 42.

AGNES FENIMORE

*"Who speaketh kind words hath many friends."*

Entered from Withrow High School, Cincinnati; Glee Club 41, 42; Senior Play Stage Crew 42; Dramatics 41, 42; Intramurals 41, 42; Girl Reserves 41, 42; Radio Plays 42.

SUE FENIMORE

*"A laugh is worth a hundred groans in any market."*

Entered from Withrow High School, Cincinnati; Glee Club 41, 42; Intramurals 41, 42; Dramatics 41, 42; Senior Play Cast 42; D. A. R. Award 42; Junior Legislature 42; Masque and Gavel 42; Girl Reserves 41, 42; Radio Plays 42.

MARY JANE GALLAHER

*"A bird is known by its note and a woman by her talk."*

Entered from Long Beach, California; French Club 40, 41 Masque and Gavel 41, 42; Washington Trip 41; Speech Club 41; Radio Plays 41, 42; U-Hi Lights Staff 40, 41, 42; Girl Reserves 40, 41; Outing Club 40, 41, 42; Mardi Gras Court 41; Senior Play Cast 42; Bible Study 42.



# S E N I O R S

## BETTY ANNE GINOCCHIO

*"The secret of success is constancy to purpose."*

Entered in seventh grade; Student Government 38, 39, 40; Glee Club 38, 39, 40; Girl Reserves 38, 39, 40, 41; Girl Reserves Secretary 40; Outing Club 39, 40, 41; Senior Play Cast 42; Senior Play Make Up 40; Masque and Gavel 41; National Honor Society 41, 42; Speech Contest 41; U-Hi Lights Staff 39, 40, 41, 42; Social Editor 40; Editor In Chief 41; K.A.S.P.A. 40, 41; Inter School Student Council 40.

## DICK HOWARD

*"The learned man has always riches in himself."*

Entered from Jenkins High School in 41; Science Medal at Jenkins High 41; U-Hi Lights Staff 41, 42.

## SAMUEL HUEY

*"Every day is not a holiday."*

Entered from Elementary School; Student Government 39, 40; Hi-Y 39, 40, 41, 42; Outing Club 39, 40, 41, 42; Hi-Y Conference Delegate 41; Basketball "B" Team 40, 41; U-Hi Lights Staff 41, 42; Business Manager of Senior Play 42; Glee Club 38, 39, 40; French Club 40, 41; French Play 40, 41, 2; Mardi Gras Court 39, 40, 41, 42.

## DOROTHY KNIGHT

*"Knowledge is its own reward."*

Entered from Elementary School; French Club 38, 39, 40, 41, 42; U-Hi Lights Staff 39, 40, 41, 42; Senior Play Cast 42; Glee Club 38, 39, 40, 41, 42; National Honor Society 42; National Music Festival 38, 39, 40, 41, 42; All State Court 41; Radio Plays 41, 42; Outing Club 39, 40, 41, 42; Girl Reserves 39, 40; Girls' Trio 41, 42; Mardi Gras Court 42.

## MAYBELLE MARR

*"In trouble to be troubled is to have your troubles doubled."*

Entered in 1938; Girl Reserves 38, 39, 40, 41; Mardi Gras Attendant; Outing Club 38, 39, 40, 41, 42.

## ELLEN MARSHALL

*"A little spark kindles a great fire."*

Entered from Hamilton; Class Secretary in 39; Treasurer in 40; Student Government 41, 42; Secretary of Student Government 41; Vice President of Student Government 42; Delegate to S.A.S.G. Convention 42; National Honor Society 42; French Club 39, 40, 41, 42; President French Club; Intramurals 39, 40, 41, 42; Secretary Girls' Intramurals 42; Mardi Gras Queen 40; Girl Reserves 39, 40, 41, 42; Mixed Glee Club 39, 40, 41; State Music Contest 39, 40, 41, 42; Outing Club 39, 40, 41, 42; U-Hi Lights Staff 40, 41, 42; Senior Issue 42; French Plays 41, 42; Cheerleader 41, 42; U-Club 42; Attendant Junior Prom Queen 42.



# S E N I O R S



## FRED MILLER

*"Ambition, thou powerful source of good or ill."*

Entered from Lebanon High School, Lebanon, Indiana; Boosters Club Medal at Lebanon; Hi-Y Club at Lebanon.

## BOB MOLER

*"A single fact is worth a shipload of arguments."*

Entered from Lafayette in 1940; Outing Club 40, 41; Senior Play Cast 41; Radio Plays 40, 41, 42; Intramurals 40, 41, 42; Hi-Y Club 40, 41, 42; U-Hi Lights Staff 42; Softball Team 40, 41, 42.

## MILDRED MOORE

*"Be true to your word, your work, and your friend."*

Entered from Elementary School; Girls Glee Club 38, 39, 40, 41, 42; State Music Contest 40, 41; Girl Reserves 38, 39, 40, 41, 42; Speech Club 40, 41; U-Hi Lights Staff 40, 41, 42; Exchange Editor 41, 42; Junior Issue 41; Senior Issue 42; Outing Club 40, 41; Dramatics 41, 42; Masque and Gavel 41, 42; National Honor Society 42; Bible Study 42; Senior Play Cast 42; Radio Plays 41, 42.

## MARY BETH McFARLAND

*"The cautious seldom err."*

Entered from Elementary School; Glee Club 38, 39, 40, 41, 42; Outing Club 40, 41; Girl Reserves 38, 39, 40, 41, 42; Bible Study 42; U-Hi Lights 41, 42; Dramatics 41, 42; Senior Play 2; Glee Club 39, 40, 41, 42; Junior Issue 41; Radio Plays 41, 42.

## ROBERT O'BRIEN

*"Man is an animal that cooks his victuals."*

Entered from Henry Clay; U-Hi Lights Staff 41, 42; President of Outing Club 41, 42; Senior Play Cast 42; Hi-Y 40, 41; Basketball 40, 41, 42; Softball 40, 41, 42; Bible Study 42; Attendant to Prom Queen 41; Student Government 41, 42; Representative to S.A.S.G. in Memphis 42.

## MARY E. PATTERSON

*"She tried the luxury of doing good."*

Entered from Harris School for Girls, Miami, Fla.; Glee Club 41, 42; Girl Reserves 41, 42; Radio Plays 42; Honor Society; Costumes for Senior Play.

# S E N I O R S

## DON POOLE

*"He holds the jester's lute in jester's hands."*

Outing Club 41, 42; Hi-Y 41.

## BILL REED

*"Jesters do oft prove prophets."*

Entered from Russell Cave School; Basketball 41, 42; Captain of Basketball Team 42; Softball Team 39, 40, 41, 42; Mardi Gras Court 41; Attendant to Junior Prom Queen 41, 42; Hi-Y 40, 41; Radio Play 42; Senior Play Cast 42; Outing Club 39, 40, 41, 42; Intramurals 39, 40, 41, 42; Bible Study 42; Speech Club 42; Dramatics 42; U-Club 41, 42.

## BILLY MAC RHODES

*"By work you get money, by talk you get knowledge."*

Entered from Elementary School; Student Government 38, 39, 40, 41; President of Freshman Class 39; Varsity Basketball 41; Orchestra 38, 39, 40; State Music Contest 38, 39, 40; Intramurals 40, 41, 42; Assistant Spors Editor 41; Sports Editor 42; Glee Club 39, 40.

## DICK SHELY

*"Make hay while the sun shines."*

Entered from Elementary School; U-Hi Lights Staff 40; Intramurals 38, 39, 40; Basketball 41, 42; Hi-Y Club 39, 40, 41, 42; Attendant to Prom Queen 41, 42; Senior Play Stage Crew 42; U-Club 41, 42; Outing Club 38, 39, 40, 41, 42; "B" Team 40; Junior High Team 38, 39; Radio Plays 42.

## PATSY SHELY

*"Friendship, the older it grows the stronger it is."*

Entered from Elementary School; Senior Play Make Up 42; Girls Glee Club 38, 39, 40, 41; Mixed Glee Club 38, 39, 40, 41; U-Hi Orchestra 38, 39, 40, 41, 42; Intramurals 38, 39, 40, 41, 42; Girl Reserves 38, 39, 40, 41, 42; Student Government 38; Outing Club 38, 39, 40, 41, 42; Social Committee for Girl Reserves 39; Dramatics 42; Radio Plays 41, 42; Captain of Girl Reserves Basketball Team 41, 42; Cheerleader 42; Manager of Basketball Intramurals; Modern Dance 42.

## IRVIN STERN

*"Though vanquished he would argue still."*

Entered from Elementary School; Intramurals 38, 39; Social Committee 39, 40; Hi-Y Club 41, 42; Masque and Gavel 42; Radio Plays 41, 42; Senior Play 42.



# S E N I O R S



NANCY ELLEN TAYLOR

*"Sureness is a goodly quality."*

Entered from Elementary School; Girls Glee Club 39, 40, 41; Mixed Glee Club 39; Outing Club 39, 40, 41, 42; Girl Reserves 42; Radio Plays 42; U-Hi Lights Staff 40, 41, 42; Literary Editor 41, 42; Intramurals 39, 40, 41, 42; Riding Manager 42; Masque and Gavel 42; Assistant Director of Senior Play 42.

CAROLINE THOMAS

*"In my own city my name, in a strange city my clothes procure my respect."*

Entered from Hamilton; Student Governmen 41, 42; Glee Club 38, 39, 40, 41, 42; Mixed Glee Club 38, 39, 40; Girl Reserves 38, 39, 40, 41, 42; Outing Club 40, 41, 42; Senior Play Stage Crew 40, 41, 42; U-Hi Lights 39, 40, 41, 42; Senior Play Cast 42; Intramurals 38, 39, 40, 41, 42; Bible Study 42; Mardi Gras Court 41; French Club 39, 40, 41, 42; Secretary 40, 41; Junior Issue; Senior Issue; Speech Club 39, 40, 41; State Music 38, 39, 40, 41.

MARIE THOMPSON

*"Honey drips from her every word."*

Entered from Elementary School; Glee Club 38, 39, 40, 41, 42; Outing Club 40, 41; Girl Reserves 38, 39, 40, 41, 42; Bible Study 42; U-Hi Lights 40, 41, 42; Senior Play Cast 42; Glee Club Contests 39, 40, 41, 42; Girls' Trio 42; All State Chorus 42; Junior Issue 41; Radio Plays 41, 42.

SAM WAGERS

*"As merry as a cricket."*

Entered from Morton in 10th grade; "B" team Basketball 39, 40; Outing Club 40, 41; President of Senior Class 41, 42; Radio Plays 42; Attendant to Prom Queen 41, 42; Senior Play Cast 42; Hi-Y 41, 42; Basketball 42; U-Club 42; Intramurals 40, 41, 42; Mardi Gras Court 41; U-Hi Lights Staff 41.

GRACE WILLMOTT

*"A cheerful countenance betokens a good heart."*

Entered from Sayre School in 7th grade; Glee Club 38, 39, 40, 41; Mixed Glee Club 38, 39, 40; Outing Club 38, 39, 40, 41, 42; Girl Reserves 38, 39, 40, 41, 42; President 41, 42; Delegate to Girl Reserve Conference 41; Radio Plays 42; Inter-Club Council Member 41, 42; U-Hi Lights Staff 39, 40, 41, 42; Junior Issue 41; Senior Issue 42; Speech Club 40; Senior Play Property Manager 42; Dramatics Club 41, 42; Intramurals 38, 39, 40, 41, 42; Vice President 42; Winner of Intramural Pin 41; Bible Study 42.

# History

"I was in first grade once!"

"Were you? Tell us about it."

"Well, it was this way—in 1930 the University of Kentucky decided to change the city dump into a school. I entered first grade, and there I found Marnie (MAYBELLE, as she was called in them thar days) in tears because she had forgotten her tuition. Among those gathered about her were EWING BROWN, BEN BUCKLEY, SALLY BUCKNER, RUTHIE DIMOCK, DOROTHY KNIGHT, MARY BETH McFARLAN, BILLY MAC RHODES, PATSY SHELY, IRVIN STERN, and NANCY ELLEN TAYLOR. After a year spent trying to teach NANCY how to hop and skip, the group was promoted to second grade.

We were joined there by a quiet little towhead named SAMMY HUEY. It was at this tender and innocent age that we first tasted the bitterness of disillusionment—DOROTHY told us there was no Santa Claus.

In the third grade, an addition to our group was another blond—DICK SHELY. Also, our classroom was on the second floor, which made us feel quite grown up. Some of our Capering Casanovas developed their now famous techniques through our study of the ways, wiles, and woos of the cavemen!

In fourth grade, JEANNE BUREAU skipped into our grade (literally) and PATSY left us for a time. As part of our study of Kentucky history, we made bayberry candles and took a trip to Fort Harrodsburg.

MILDRED MOORE came to be with us in fifth grade. The most memorable event of that year was our super-colossal production of Peter Pan. We studied the T. V. A. in this grade. (FRANKLIN please note.)

MARNIE left us at the end of this year but MARIE THOMPSON, BETTY BROWN, and BILL REED entered to help make up for the loss. The class put on a play about Dr. Doolittle and had a grand time being animals. (Remember the Pushmepull-you?) Our first steps in journalism were attempted when we traditionally put out the *Skywriter*.

The day of our graduation from Elementary—a big event in our young lives—found us all dressed up in white clothes, even the unconventional BILL REED.

On entering seventh grade our erstwhile sophistication left us—we were the youngest members of that bewildering chaos called high school! PATSY SHELY reentered and we gained four new people: GRACIE WILLMOTT, BETTY ANNE GINOCCHIO,

FRANCES DANIEL and BILL EMBRY. Since BILLY entered about a month late he caused quite a bit of curious speculation as to what he would be like. Luckily, we weren't at all disappointed when he finally put in an appearance.

Our second year in junior high school brought CAROLINE THOMAS and JACK BUCHER, and left us the laughable memory of Mr. Betz's home room. Mr. Betz was new to the school and he considered us the worst bunch of little devils with whom he had ever come in contact. Before he left to serve Uncle Sam this spring Mr. Betz amused us with several stories about our conduct as eighth graders. Once he attempted out-and-out bribery. At Christmas he was about to present each member of the class with a Clark bar (paid adv.) when one skeptic drawled, "What's a matter? They got worms in 'em?" While Mr. Betz was patiently trying to endure his 'roomful of hoodlums', NANCY ELLEN was having a big time in Europe, but she was with us again the next year.

As frivolous Freshies, we began to get a little bit used to the ways of the sophisticated Seniors. BETTE ANNE ALLEN and ELLEN MARSHALL joined us as newcomers that year and MARNIE came back again. During the second semester we were initiated into Girl Reserves, Hi-Y, and Outing Club. On the first meeting of Outing Club, which was out at Dick Hord's farm, they made us walk three miles for our supper.

BOB O'BRIEN, MARY JANE GALLAHER, and SAMMY WAGERS were new additions to our class of silly Sophomores and MARNIE left again. Our Sophomore Spring Swing was the big accomplishment of the season. Several of us became reporters on the staff of the U-HI LIGHTS. Others became members of the senior high Glee Club, the basketball team, and other school organizations. We really began to take a part in the activities and to feel as though we belonged to the school.

As jiving Juniors we again had Mr. Betz as home room teacher, and BOB MOLER entered from Lafayette. Our dramatics, English, and biology classes took a trip to Cincinnati, where we visited the Zoo and saw Katherine Hepburn in "Philadelphia Story." The year came to a climax in the spring when we gave our Junior-Senior Banquet and Prom, and two of our members made National Honor Society: BETTY ANNE GINOCCHIO and BETTY BROWN. A new honorary speech society, Masque and Gavel, was brought to U-Hi, and in May, BETTY ANNE GINOCCHIO, MARY JANE GALLAHER,

(Continued on Page Seventeen)

## Sh-h-h

By SNOOPERMAN

Once more, and for the last time, we take up our quill and scroll to put down the activities around University High (and outside too) of you ladies (?) and gentlemen (?). The span of a school year has come and gone once more and we shall return no more to romp mischievously through the halls. The thought of our unit which has for twelve years remained solid and whole, suddenly breaking into its component parts, makes us wish we had it all to do over again. Not that we'd have it any different! Here's our summary of the Seniors' activities and may they continue to always have as much fun as they have had this past year.

Miss Brown and Mr. Buckley seem to have strayed from the beaten track that they had set for themselves at the beginning of the year. This affair should reach a definite conclusion during the summer months when "Hi" returns and Miss Chandler shines forth with a swimming pool in her backyard!!

Maybe our new friend, Fred Miller, doesn't go for our Southern ways 'cause though the gals have tried hard, he hasn't given any of them a tumble. Have you a girl back home in Indiana, Fred?

Bill Chamber's heart is far up Michigan way and the girls here have long since given up hope. How 'bout coming down below the Mason-Dixon line, Bill?

The Fenimores seem to have fitted in beautifully with the U-Hi Way since their leave-taking of the big city of Cincinnati. Not only have they thrown some good parties since they've been around 'ye old town', but the dark-eyed Susie has captivated us with her infectious giggle and managed to transplant her 'Cincy' beau, Dick Dillon, down Lexington way. Nice going, Sue, would that we could do the same! Fair Agnes has left us slightly confused what with her attentions to the 'Pres' of the Senior Class and the numerous letters, with the address reading 'Mister', to that town in Ohio. Come clean, Aggie, what's going on, are you giving us the run around??

With the exception of Ruthie, it's pretty plain that Sammy Huey has little use for this year's crop of females of our soon-to-be alma mater. As far as we know, the Henry Clay Band sponsor, Miss Gilson, an ex-U-Hi gal, is his only other heartbeat.

Jeanne Bureau's heart-throb is now sailing the ocean blue and though she claims it's over and done with, her absent-minded humming of "Anchors Aweigh" betrays the fact that the navy blue and gold is still supreme where she is concerned.

Miss Dimock started with smooth sailing, but things definitely picked up long about Thanksgiving time when she flew the coop to Kenyon to return sighing of her true love. Casting aside all home-town lads to turn her eyes continually toward Gambier, she trifled briefly with the affection of Toggy and Bob O'Brien, finally settling down to Big Dick Shely. Maybe it's "out of sight; out of mind" for Carter, uh, Ruthie?

Nancy Ellen started the year with Ben Johnson (whom we don't know!) but being seemingly unsatisfied with the results she put an end to that—What's going on now, Nancy? Are you holding out on us?

Mary Elizabeth Patterson has interests which are rather wide spread; specializing particularly in Frankfort, the home base. We have heard rumors of her in connection with the KA's at U. K. There seems to be more there than meets the eye—How 'bout this, Mary Lib?

Perhaps the males at U-Hi don't fully appreciate Dorothy Knight. Harold Carr was the 'big moment' in the fall, then she switched with Mary Lib for Phil Jones. Now we KNOW it to be an entirely different story. It's a tall, blue-eyed, rough and ready man at U. K. Had you noticed the third-finger-right-hand recently, and could his name be Beard??

Congratulations, Sally! We never thought you could do it!! Would you tell us how? We are referring to your superb management of Bucher-Hollingsworth couplet. Both are just as attentive as ever, not to mention Tom Baldwin, Billy Goddard and the rest.

Might we call your attention to the big romance of the year? The Great Lover Franklin, and our piano virtuoso, Miss Bette Ann Allen, have finally decided that they're made for each other. Franklin played the field for many months 'round the halls, datin' both Caroline and Betty Brown until suddenly he espied Bette Ann and all was lost. At this point it looks like they're settled down for life.

How 'bout this Gallaher woman? I'm a-tell-i-n-g y-o-u! Sailors having girls in every port haven't a thing on her. She's got a string of 'em. There's Colly Williams at U. K.—most ardent, there's 'Doc', a Sigma Chi,—most attractive, there's Fred somebody—best dancer. There are Nicholasville men, KA's, Georgetown men—'Gal' not being happy with this, adds 'Big Steve' who is after all best all around man! Need I say more!

*(Continued on Page Sixteen)*



## Prophecy

A boon to society, a boon to science, and a boon for us because DICK HOWARD, U-Hi's own Edison has invented a new machine which permits you to look into the future. We gathered all this material from this machine and for the convenience of any one else who wants to use this machine, Dick has it set up in the tower.

The first scene which flashed on the screen is the metropolis of the world, New York. The scene is the Great White Way and Broadway. It has changed considerably since 1942 for now the biggest and brightest spot is BOB O'BRIEN'S new night club La Caramba. We see that JACK BUCHER is bouncer. Jack still insists that this is just to keep him in training for his Boy Scout work. SALLY BUCKNER, our profile girl, is now thrilling Boy Scouts.

BETTE ANNE ALLEN is the featured entertainer with her "You Name It Dance."

The scene moves farther down Broadway and we find BETTY ANNE GINOCCHIO playing in the revival of that old favorite "Young April" which, incidentally, finally reached Broadway with the original cast. It closed shortly after its arrival, though, because Mr. Briggs collapsed into a coma.

On Fifth Avenue the shoppers are all excited about the opening of a new shop for women. It's proprietors are none other than CAROLINE THOMAS and MARNIE MARR.

There's the old Waldorf-Astoria Hotel. It seems that MARY BETH McFARLAND has remodeled it and renewed its fame by her famous southern home cooking.

News Flashes:

The social news of the day is that ELLEN MARSHALL has snagged herself the leading New York millionaire.

The scientist IRVIN STERN is leading his campaign *Mass Migration to Mars*.

BILL CHAMBERS has taken Charles Atlas's place as the man with the best physique.

The scene now shifts to Hollywood:

Our illustrious SUE ANN FENIMORE has taken over Bob Hope's program. "Corn Lives On!" All '42 class members are accepted on this program.

The famous actress and beauty queen RUTHIE DIMOCK has recently retired from the screen to become the wife of a farmer in Lexington, Kentucky.

BILL "The Terror" REED, the famous baseball player, returned from spring training camp to welcome the guests at his new sea food restaurant. His manager, BILLY MAC RHOADS, accompanied him to protect him from the women fans.

Speaking of sports, it seems that BILL EMBRY has really made a name for himself in golf. He just finished winning the National Women's Open Championship.

Oh! A new scene opens before our eyes, and what do we see but gay Parree! They say that FRANKLIN BROWN reconstructed the gay life of Paris (and he's the man to do it) after the war and his associates DICK DILLON, our short hand demon, and FRED, master mind, MILLER, actually forsook their boyhood sweethearts and remained in Paris to live that fast, gay life.

STEVE BANAHAN has taken the town by storm with his combination roller skating, bicycle riding, and juggling act.

SAMMY HUEY also remained in Paris, but shunning the night life, has opened up a Y.M.C.A. for the underprivileged French.

Now to a more secluded part of France. We find Countess MARY ELIZABETH PATTERSON living high on a cliff in a lovely, but weird chateau. Her American men drove her to join the Foreign Service Nurses' Corps, and she done married a count.

And again the scene is changing. Hmmm—do we hear soft music of mandolins and the rustle of grass skirts and who is that striking looking man? Why, it's DICK SHELY and mark my word there are 12 women following him. We often wondered why he never came home from war.

Speaking of war reminds us of sailors, and sailors remind us of JEANNE BUREAU who married her favorite man of the navy and is living in her little grass shack up in the hills.

The scene now changes to the old home town.

The biggest news of town is that our SAMMY WAGERS has again proved his ability and is President of the First National Bank. (He always told us he could count above 10.)

Who do we see now but DOT KNIGHT, who got serious over that collection of gold rings and is now raising little Beards.

Marie Thompson has the lead in the new Guignol play "That Putrid Parson," which opens tonight.

We now pass Dr. Shely's office where she operates with one hand and writes poetry with the other.

Lexington has just acquired a new librarian for its new ultra modern library. It is none other than our own MILLIE MORE, and boy, does she know the books!

NANCY ELLEN TAYLOR just returned to town from a trip to Italy to sketch landscapes (She says).

(Continued on Page Eighteen)



## Class Will

We, the Seniors of University High School, being of sane (?) and sound (?) mind, do hereby make these bequeaths in our last will and testament.

Bette Anne Allen leaves her ability to walk like a duck to Barbara Rice.

Betty Brown leaves her pink cheeks to Dorcas Hollingsworth—who really doesn't need them.

Ewing Brown leaves her popularity and her Prom crown to Pat Griffin, her most likely successor.

Franklin Brown leaves his waspish waist to Willie Jones and his girl to no one.

Jack Bucher leaves his faithfulness to Billy Cowgill (Griffin should like that) and his ability to imitate Mr. Briggs to anyone with nerve enough to take it.

Ben Buckley takes his good looks to college with him but leaves to David Mohny his scalp-wriggling technique.

Sally Buckner leaves her profile to the highest bidder. (Proceeds to go to Boy Scout Relief.)

Jeanne Bureau leaves her proficiency in basketball to Eva Lewis.

Bill Chambers leaves his physique to Shermin Horine.

✓ Frances Daniel leaves to Mary Jane her cute ways. (Just adding to the cute ways Mary Jane already has.)

Ruth Dimock leaves her raven hair to Marion McCaw, just in case she wants to change.

Bill Embry leaves to Ray (Demon) Murphy a set of used golf tees.

✓ Mary Jane Gallaher leaves her ability to gab to Pat Evans.

Betty Anne Ginocchio leaves her worries of the paper to Jack Fields—also a pamphlet entitled, "You Too Can Drive Briggs' Car in Ten Easy Lessons."

✓ Richard Howard and Fred Miller each leave a portion of their respective brains to be divided equally among the members of the Junior class.

Sam Huey requests that his way of agreeing with everybody and seeing their point of view be given to Larry Simpson.

✓ Dorothy Knight leaves her musical knowledge to Frankie Horlacher.

✓ Mary Beth McFarlan leaves her over abundance of noisiness to shy and retiring Martha Linney.

Marnie Marr leaves her curly hair to Alice Headley.

Ellen Marshall leaves her jitter-bugging ability to Anne Congleton—go to it, Anne!

Bob Moler leaves his unique laugh to Gene Marlowe.

Mildred Moore leaves her ability to make National Honor Society to Eddie Miller. Now don't disappoint us, Eddie!

Don Poole leaves his ability to throw house parties to Hall Hollingsworth, no mean host himself.

Bill Reed leaves his trim lines (both kinds!) and his adoring public to Billy Cowgill, who already has a following of his own.

Billy Mac Rhoads leaves his twit on Ellen Marshall to Harry Gorham. Carry on, son!

Dick Shely (Big "Dick") leaves his basketball prowess to Larry Hammett.

Patsy Shely leaves her peroxidized hair to John Marlowe.

Irvine Stern leaves all the answers to Senior history to the Junior class in general.

Nancy Ellen Taylor leaves her famous "womps" to Herbert Mulder.

Caroline Thomas leaves her "glamour duds" to Sara Masters.

✓ Marie Thompson leaves her sweetness to Jean Coleman, another sweet gal.

Sam Wagers leaves his fascinating smile to Logan Savage. (This is a great gift, Logan.)

Grace Willmott leaves her swell personality and sunny character to everyone in general and no one in particular.

Jesse Adams leaves his knack for skipping grades to Floye Mullinaux.

Aggie Fenimore leaves her beloved red shoes to Jane Erickson. Be careful, Jane, they squeak when wet.

✓ Sue Fenimore leaves her half a wit to John Marlowe, who, we understand, has the other half!

Bob O'Brien asks that the beard and the jar of Burma Shave (now slightly used) he received in 1940 from Bill Holt be handed down to Solly Van Meter.

Dick Dillon leaves his monetary aptitude (the things you learn when you're a senior!) to Bill Rockwell.

Steve Banahan (that Big Thriller) leaves his boarding school experiences to Roger Miller—handle with care!

And, as Seniors, we leave the following to the faculty (God bless 'em):

To Miss Anderson, all our love and appreciation.

To Mr. Briggs, an aspirin tablet and a copy of Housekeeping on a Budget—also our complete approval of Miss Terrill.

To Miss Topham, all our stray animals.

(Continued on Page Eighteen)

## Sh-h-h

(Continued from Page Twelve)

The big President of the Senior Class has certainly had a rough and ready year. Last fall we elected a sweet, shy boy to fill this honored position and now in the spring of the year the tables have certainly turned. Mr. Wagers has become quite the Romeo, what with that gal named Georgia continually chasing him around and a certain blond little (??) Sophomore teaching him all he needs to know in the art of making sweet love.

Frances Daniels has certainly managed to have her phone number in lots of little red books since last fall. Seems there's a man over G-town way who thinks she's pretty wonderful stuff and our own Don ("God's Gift to the Ladies") Pool seems to find her company very, very, entertaining.

Speaking of Frances, I am reminded of that Casanova of the Senior Class,—Mr. Don (2nd Looney) Pool. When you talk of men really gettin' around and covering territory—put Donald at the head of your list. He's got women on his trail from Lafayette to G-town and half way back.

Marnie (you can't win) Marr seems to have spent her time this season hopping from corner to corner on the eternal triangle, using certain Fraternity men for stepping stones. She's about (last reports, at least) to settle down to only three for the time being with Mitch Crane heading the list.

To get into a more peaceful and secure vein, we think of Big "Dick" Shely. You know Richard shore does love those wide-eyed brunettes. When September rolled around he still had that Lafayette Longworth girl in tow, but that didn't seem to linger long. After a whole lot of playin' the field, he finally returned to home grounds to worship quietly at Ruthie's shrine. Flash, we just learned that Miss Ruth Mudge Dimock has formally accepted Mr. Richard Simmons Shely's basketballs. Yes, all three of them and isn't that wonderful. Congratulations to you both!

Keepin' her affairs on the q.t. seems to be agreeable to Caroline Thomas, but though we've heard little of her activities for the year, on investigating we find some quite interesting items. That ring she's wearin' is a small token of esteem from her University admirer from Owensboro by the nom de plume of W. Triplet. And quite a handsome lad he is too. As for other progress during the school months,

Stonestreet had a try out with homeground men, for awhile, namely one Mr. Shely, but she soon turned to greener pastures and Mr. Cassell Stewart. Toggy appears to be top rung in Tommie's ladder, long 'bout now.

That flash from gosh-only-knows-where Mr. Banahan, has caused quite a lot of commotion 'round our scholarly halls since he decided education was the up and coming thing. He's played the field 'round our sanctum of learning and collected many phone numbers in his little blue book but it appears that it took a country gal to appeal to him. Stevenson's abode is where he evidently prefers to hang his chapeau, so your efforts all seem wasted, girls. They say grass always looks greener on the other side of the fence, Steve, what do you think?

The Doctor's daughter from G-town must prefer her hometown string of men to Lexington's city slickers. When school took up last autumn she gave our friend Franklin a tumble, but must have decided to stick to closer territory and returned to her distillery man's hearts and flowers.

The other half of the answer to the "So They Say" writer's prayer is of course Jack Bucher. The word Sally, completely covers his activities for the entire year and he certainly seems completely happy with it that way. This coming summer should tell the tale between you and Donn, huh, Jack?

The Junior girls seem to have claimed most of Bill Embry's attention when he wasn't too busy being president of things. Various Seniors put a bid in for top place in his heart but no one seemed to come up to the Hollingsworth or Griffin standard.

Our editor is the class mystery woman. Several University men seem to be stringin' along in her wake. Oh yes, Betty Anne, it also seems that Miss Valteau would like you to lay off a certain redhead that she claims possession of—round about Senior Play time you were seeing an awful lot of him, weren't you? More power to you if you win out.

Speaking of the above mentioned O'Brien, he, like his friend Bucher, has remained faithful to one cause, with only a little strayin', once in a while. Jean certainly seems to have his heart well ensnared in spite of their constant quarrels, and his spasmodic attractions for other gals. If you go to New York, Bob, what about Miss Valteau?

Well, children, that's it—the final sum and score for 41-42. It's been fun, hasn't it, and I am practically lapsing into tears in my gloom at quitting. May you all have in the future as much fun as we've all had in the past year.

## History

(Continued from Page Eleven)

MILDRED MOORE, and BEN BUCKLEY were taken into it. And BETTY ANNE GINOCCHIO was also elected Editor of the U-HI LIGHTS for our senior year.

SENIORS!!!! (da da da da ta da!) (trumpets, you moron.) This year we acquired ten new-comers: AGGIE and SUE FENIMORE, FRANKLIN BROWN, MARY ELIZABETH PATTERSON, DICK HOWARD, DICK DILLON, FRED MILLER and BILLY CHAMBERS and JESSIE ADAMS who skipped their Junior year. Also, MARNIE came back again! She just can't seem to make up her mind.

And now we are about to take "that long walk down the aisle" and receive our sheepskins. Most of us are a little sad about leaving but we all feel that

we have accomplished some worth while things this year. The Christmas dance and the decorations were beautiful and have brought us many compliments. We had loads of fun working on the Senior play and are proud of the final results. (Take a bow, Mr. Briggs.)

Four more seniors were initiated into National Honor Society: ELLEN MARSHALL, DOROTHY KNIGHT, MILDRED MOORE, and BILL EMBRY. And into Masque and Gavel went five neophytes: SUE FENIMORE, BETTE ANNE ALLEN, NANCY TAYLOR, BILL CHAMBERS and IRVIN STERN.

And now, as a final gesture, we will pass on to the juniors (to help them through their senior year) the secret formula which we have found will solve any situation. Quote—Foo plus one-half equals two. Unquote. If used discreetly this will prove very valuable.

## Basketball

During the past year, the University High basketball team experienced one of its most successful seasons in recent years. The team won a total of eight games while dropping six.

The Purples started off the season by dropping a thriller to Berry, 35-30. This game was marked by many fouls, mostly committed by the Purples.

The next game, the U-High warriors journeyed to Athens and swamped the Tigers, 48-17. This game showed a marked improvement of form by the Purples. Following the Athens game, there was a Christmas vacation which was enjoyed by all.

Then came an important engagement with the Lafayette Generals, whom we later found out to be the State Champions. Lafayette and U-High slugged it out in the first game on the Purple floor and after a rough and tumble affair Lafayette emerged the victor, 16-10.

The next game was with a strong Wilmore Bear five, but the Purples showed they were better by winning 33-21.

January 16, Berry journeyed to U-High and went back home stinging from a 31-29 defeat.

A week later came the first Nicholasville game and the Purples also took them into camp by 29-15. On Tuesday, January 27, the U-Hi'ers traveled to Versailles, there to drop a 35-31 decision to the Yellow jackets.

The next foe on the list was Nicholasville again. The Purples won 35-28, but it wasn't because the Tarantulas weren't trying, for they put on a last minute rush that almost attained them victory.

The Clark County Cardinals engaged U-Hi at U-Hi the night of February 3 and went home on the short end of the score, 32-23. This was the first time the Purples had defeated the Cardinals in five years.

The next game was the most important engagement of the year. The Purples traveled across town to Lafayette's gym. The Purples were a "dark horse" favorite, but the "cards" and Lynn Grogan seemed to be against U-Hi that particular night and the stellar guard sank a long shot in the last minute of play to give the state champs victory 24-22.

This disheartening defeat did not undaunt the Purples' spirit, however. In their next contest they lost to Mt. Sterling, a strong state title contender, by 30-16.

A contest with Frankfort was the next enemy of the Purples, as they won 41-24. Wilmore was a return foe of U-Hi and the Purples lost by 29-16. In the last game of the season they swamped the hapless Athens Tigers, 52-7.

The boys receiving letters this year were Bill Cowgill, Bill Reed, Dick Shely, Jack Bucher, Larry Hammett, Sam Wagers, Ben Buckley, Bill Chambers, Harry Gorham, and Bob O'Brien.

## Prophecy

(Continued from Page Fourteen)

Word has just reached here, that after leaving a chain of broken hearts from coast to coast AGGIE FENIMORE has finally married. She settled on a rodeo champion. (It was the bright colors that got her).

SONNY finally popped the question and he and EWING are living in the new government housing project. Sonny is running for governor of the state and Ewing and the two little BUCKLEY'S are helping the cause by stumping the state.

We see by the head lines that MISS PECK has retired and Prof. JESSIE ADAMS has filled her position at U-Hi.

We weren't surprised when we learned that BETTY BROWN is now in charge of the Kentucky Derby and Churchill Downs while helping her husband with his distillery on the side.

Betty tells us that GRACIE WILLMOTT was the biggest winner at the track this year. Gracie owns a horse farm in Bourbon County.

MARY JANE GALLAHER has forsaken her glamorous life and is devoting herself to raising her 12 children. She also runs a bookie on the side (just for pocket money).

BOB MOLER returned to town for a "roll your own" cigarette company convention.

FRANCES DANIEL spent last week end in jail for her riotous conduct at the last meeting of Local 207 of the Labor Union.

But here is the news, it's as great as Einstein's theory, it's as revolutionary as Edison's light bulb and as startling as the discovery of Mars, for by this great machine we see that DON POOLE has finally graduated from U-Hi!!

## Class Will

(Continued from Page Fifteen)

To Miss Peck, a match to keep her candle of civilization going.

To Mr. Keffer, an old Joe Miller joke book to while away the Chemistry hour.

To Miss West we leave a copy of "Vogue" to keep up with the latest style.

To Mr. Kemper, our ability to be heard from one end of the hall to the other.

To Miss Clay, a round of applause for the way she took over Betz's classes.

To Mrs. Woods, one slightly used admit slip.

To Mrs. Randle, a Horace Heidt recording of "Deep in the Heart of Texas."

To Mr. Williams, all the trials and tribulations of the Senior class plus a bottle of Vitamin B<sub>1</sub>.

We, the Seniors of 1942, hereby affix our hand and seal to this, our last will and testament.

COMPLIMENTS

of

HARBER SHOE CO.

GOOD EATS

PHONE 9787

LARRY'S

921 S. LIMESTONE

COMPLIMENTS

BANK OF COMMERCE

Member Federal Reserve System

Member Federal Deposit Insurance  
Corporation

BUY DEFENSE SAVINGS

BONDS

COMPLIMENTS  
of  
McGURKS

JIMMY KELLER RAY KELLER

"Finest in Flowers for over 45 years"

KELLER-FLORIST

SHORT and LIME

PHONE DAY 354 LEXINGTON, KY.

A Graduate's Dream Come True

KIRK'S

Visit Kirk's Jewelry Corner

MAIN and MILL

COMPLIMENTS

of

Southern Brothers

Fugazzi School of Business  
Incorporated

Kentucky's Progressive Business School

122 North Upper Street Lexington, Ky.

Anna Phelps Mitchell, President

Transylvania Printing Co.  
Incorporated

Printers—Office Outfitters—Stationers

108 North Upper Street

Lexington, Kentucky

COMPLIMENTS

of

KENTUCKY CLEANERS

PHONE 2222

252 E. MAIN

COMPLIMENTS

of

BEDERMAN SHOE CO.

225 EAST MAIN

Your Sporting Goods Store  
Extends  
Heartiest Congratulations  
and  
Good Wishes

THE SMITH-WATKINS CO.

Incorporated

236 E. Main St.

Phone 28

BE BETTER FITTED IN

**BAYNHAM'S**  
SHOES OF DISTINCTION

Headquarters For  
**SCHOOL AND CAMPUS SHOES**  
For Both Boys and Girls

— B O W L —

At the  
**COLONIAL BOWLING LANES**

Euclid Avenue, Across From U. K. Stadium  
Curb Service Reasonable Rates

WE WISH TO  
THANK THE  
U. HI STUDENTS  
FOR THEIR CONSTANT PATRONAGE

**THE STIRRUP CUP**

"We Never Disappoint"

**HOWARD & HEAFEY**  
FLORISTS

Phones: 404 - 440

Winchester Road Lexington, Ky.

SAVE ON YOUR LAUNDRY

Use Our

DRIVE IN SERVICE 15% DISCOUNT

**DE BOOR**

Laundry  
Phone 2000

Dry Cleaning  
265 Euclid

COMPLIMENTS

of

**VICTOR BOGAERT**

COMPLIMENTS

of

**PHILLIPS SHOE CO., Inc.**

116 West Main

COMPLIMENTS

of

**EMBRY & CO.**

(Incorporated)

