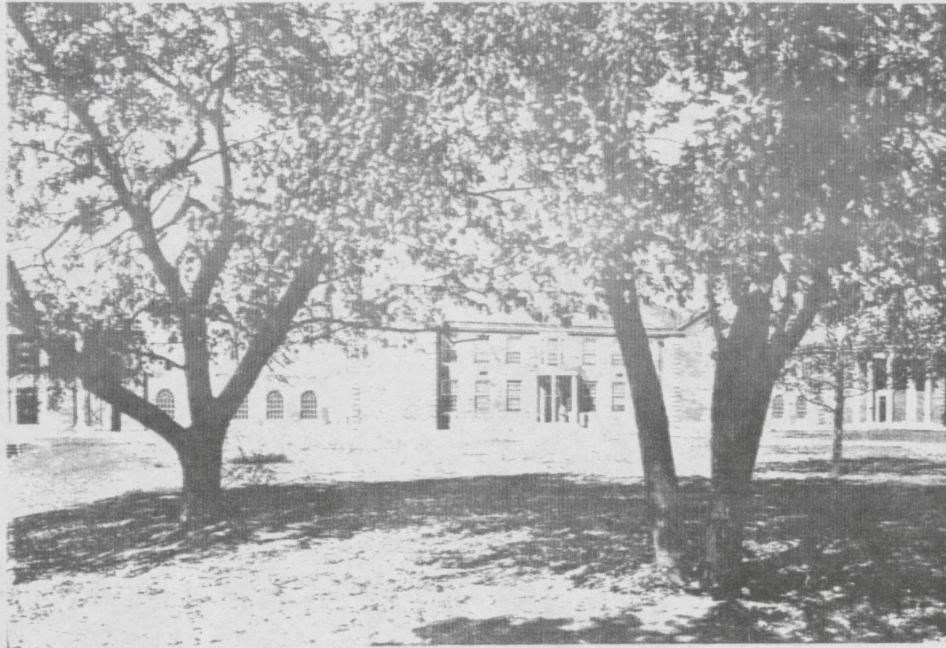


The
A-Hi Lights

1944



THE UNIVERSITY SCHOOL

Foreword

In a small school, every class has its own personality. Ours is characterized by conflicts—cliques, candor, competition, capriciousness, and confusion. We're tall, musical, singularly eccentric, sharp-witted, and sentimental. The conflicts are directly traceable to an overabundance of leadership. Twenty of our 42 are leaders in various fields of endeavor.

We've been tremendously happy; we view with sorrow the termination of our pleasant years at U-High, but such is life—we must leave.

For the future, we have some hope, some fear, and some faith. We think honestly. We're too small, too young to reform the whole world by ourselves, but we believe we can make it a mildly crazier, happier, better place before we get through. We believe U-High has given us the best start we could have on the long road of life.

U-HI LIGHTS 1944

TOM UNDERWOOD
Editor

MORRIS BEEBE
Sports Editor

MISS GRACE ANDERSON
Faculty Advisor

RIDGELY PARK
News Editor

CAROLYN McMEEKIN
Associate Editor

Foreword	Page 2	The Editor
Faculty	Page 3	
Members of Class	Pages 4-10	Floye Mullinaux, Glenna Ritchie, Dianne LeSturgeon
The Will	Page 11	Carolyn McMeekin, Jane Fugazzi, Eva Lewis
The History	Page 12	Pat Evans, Ridgely Park, Frances Horlacher
Snapshots	Page 13	Jim Steiner
Memories	Page 14	Pat Evans, Esther Brumfield
The Year in Review	Page 15	The Quartet
Sports	Page 16	Morris Beebe, Bunkie Wilkie, Will Allen
Ten Years Hence	Page 18	Nancy Skeen
The Murder Mystery	Page 20	Betty Ree Rhoads, Jim Steiner

Published by

The Senior Class

Of the University High School

Lexington, Kentucky

FACULTY

From the standpoint of a "pinch hitter," you have been able to "hit" when the pressure was on. The students, faculty, and parents have placed first things first this year, and I firmly believe each person has kept his eye on the bigger objectives of the school.

In all branches of the war effort, the contributions have been more than creditable. All the drives have been supported with enthusiasm and determination and the results have been good.

You have shown your ability to think, plan, and execute those plans for the good of the entire group. Your work with and for the Student Council is an outgrowth of this, and the results have been excellent.

In athletics, both the participants and the backers have shown a loyalty and desire to play the game as it should be played. This desire led to an excellent season and a remarkable spirit throughout the school and community.

May I express my personal gratitude to students and faculty alike for an enjoyable year. You have made the hard things easy and have made the difficult things pleasant.

In the future, whether you be in the classroom, on the athletic teams, in the bigger services of your country, or wherever you may be, have high ideals, noble thoughts, and strong determination.

May each of you have the satisfaction of realizing that your job is well done.

—LYMAN GINGER.



MR. LYMAN GINGER
Principal-Coach

MISS GRACE ANDERSON

Grace Anderson
English

MISS HELEN BELSER

Helen Belser
Seventh Grade

MR. WALLACE BRIGGS

Wallace Briggs
Dramatics and Speech

MISS JEAN ELLIOTT

Jean Elliott
Home Economics

MISS LOUISE GALLOWAY

Louise Galloway
Librarian

MRS. RUTH HAINES

Ruth Haines
Art

MISS MARGARET BELL HUMPHREYS

Margaret Bell Humphreys
Typing and Shorthand

MISS LELA MASON

Lela Mason
Music

MRS. FORREST MERCER

Forrest Mercer
Mathematics

MISS ANNA B. PECK

Anna B. Peck
History

MISS MARTHA SHIPMAN

Martha Shipman
Eighth Grade

MISS MARY WEST

Mary West
Languages

MISS CARMEN PEREZ

Carmen Perez
Spanish

MISS HUGUETTE BALZOLA

Huguette Balzola
French

MRS. ANDREW O. RITCHIE

Andrew O. Ritchie
Cafeteria Manager

MISS BETSY ROACH

Betsy Roach
Secretary

SENIORS



Willie Allen

WILLIAM HENRY ALLEN

"In thy face I see honor, truth, and loyalty."

Entered from Picadome in '39; Intramurals, '41, '42, '43, '44; Victory Corps, '43; Varsity Basketball, '43, '44; Co-Captain, '44; Student Council, '44; Vice-President of Junior Class, '43; Vice-President of Pep Club, '44; Mardi Gras Court, '43; U-Hi Lights Staff, '44; Bible Study, '43, '44; Senior Play Cast, '44; U-Club, '43, '44; Scrap Metal Drive, '43; Bowling Champions, '44; All-State Chorus, '43; Regional Tournament, '44; District Tournament, '43, '44; All-Regional Team, '44.



*a swell girl
Tommy Asbury*

THOMAS HALEY ASBURY

"Thy modesty's a candle to thy merit."

Entered from Sayre School; Intramurals, '41, '42, '43, '44; Hi-Y Club, '40, '41, '42, '43; Pep Club, '43, '44; Outing Club, '41-'42; Bible Study, '42; Bowling, '43, '44; Personality Parade, '44; Golf Team, '44; Junior Prom Court, '44.



Morris Beebe Jr.

MORRIS WILSON BEEBE, JR.

"Make not thyself the slave of any woman."

Entered from Elementary School; President of Freshman Class, '40-'41; Junior High Basketball, '40-'41; Intramurals, '41, '42, '43, '44; Outing Club, '40-'41; Basketball "B" Team, '41, '42, '43; Hi-Y Club, '41, '42, '43, '44; Secretary, '43; U-Hi Lights Staff, '41, '42, '43; Sports Editor, '44; Circulation Manager, '44; Junior Issue, '43; Senior Issue, '44; President of Junior Class, '42-'43; Chairman of Scrap Metal Committee, '42; Bible Study, '42, '43, '44; Golf Team, '42, '43; State Tournament, '43; Victory Corps, '43; Vice-President of Senior Class, '44; Basketball "A" Team, '44; District Tournament, '44; Regional Tournament, '44; Glee Club, '43, '44; Red Cross-work, '43, '44; Bowling Champions, '44; National Honor Society, '44.



MARY ESTHER BRUMFIELD

"Better to wear out than to rust out."

Entered from Nicholasville in '43; Science Club, '41-'42; Home Ec. Club, '41; Band, '42; Paper Staff, '42, '43; Feature Editor; Basketball and Football Cheerleader, '42, '43; Pep Club, '41, '42, '43, '44; Girl Reserves, '41, '42, '43, '44; Program Committee Chairman, '42-'43; Glee Club, '41, '42, '43, '44; Orchestra, '41.



*Love to God
Elizabeth Ann Carter*

ELIZABETH ANN CARTER

"A pretty girl is like a melody."

Entered from Nicholasville in '43; Home Ec. Club, '40, '41; Science Club, '40; Pep Club, '40, '41, '42, '43; Girl Reserve, '40, '41, '42, '43; Staff, '42; Glee Club, '40, '41, '42, '43.



JANE HUNT CLARK

"If all the girls in the world were just as nice as she."

Entered from Sayre School in '43; Charter member of the Beta Club, Vice-President, '42-'43; Highest Honors in School in English; Girl Reserves, '43-'44; Member of Red Cross Home Nursing Corps, '43-'44.

SENIORS

MARTHA ANDERSON CRUTCHFIELD

"Silence more musical than any song."

Entered from Nicholasville in '43; Pep Club, '44; Girl Reserves, '44; Glee Club, '44.



"Cortez Crutchfield"

PATRICIA EVANS

"Do you not know I am a woman? When I think I must speak."

Entered from Elementary School in '30; Girl Reserves, '41, '42, '43, '44; Secretary '42; Glee Club, '41, '42, '43, '44; Regional Music Contest, '42; All-State Chorus, '43; Intramural Club, '41, '42, '43, '44; Sports Manager, '43-'44; Secretary, '43-'44; U-Hi Lights Staff, '42, '43, '44; Feature Editor, '43; Proofreader, '44; Student Council, '42; Secretary, '42; Masque and Gavel, '43-'44; Pep Club, '44; D.A.R. Good Citizenship Award, '44; Assistant Director of Senior Play, '44; Bible Study, '41, '42, '43, '44; National Honor Society.



So we should have...

HENRY GILBERT FOUSHEE

"A great man is he who never loses his child's heart."

Entered from Elementary School; Orchestra, '41, '42, '43; Orchestra State Contest, '41, '42; Swing Band, '40, '41; Hi-Y Club, '41, '42, '43; President, '44; Bible Study, '41, '42, '43, '44; Senior Play Production Staff, '44; U-Hi Lights Staff, '44; Senior Quartette, '44.



Henry Gilbert Foushee

JANE MARGARET FUGAZZI

"The two noblest things, which are sweetness and light."

Entered from St. Agnes Academy, Memphis, Tennessee, in '43. Previously attended Nazareth Academy; President of class, '40-'41; Drama Club, '40, '42; Art Club, '40, '42; Music Club, '40, '42; Science Club, '40, '42; Physical Education Club, '40, '42; Paper staff, '40, '42; Girl Reserves, '43-'44; Pep Club, '44.



JACOB HUGHES GRAVES

"What is worth doing at all is worth doing well."

Entered from Sayre School in '41; President of Freshman Class, '40-'41; Hi-Y Club, '41, '42, '43; Dance committee for Junior Prom, '43; Glee Club, '44; Production Staff of Senior Play, '44.



Jacob Graves

FRANCES THOMAS HORLACHER

"Music, when soft voices die, vibrates in the memory."

Entered in '41; Victory Corps, '43; Girls' Glee Club, '41, '42, '43, '44; Mixed Glee Club, '41, '42, '43, '44; Girl Reserves, '41, '42, '43, '44; All-State Orchestra, '41, '42, '43; U-Hi Orchestra, '41, '42, '43; Regional Music Contest Solo, '42, '43, '44; State Music Contest Solo, '43; State Glee Club Music Contest, '41, '42; Mardi Gras Entertainment, '42; Outing Club, '42; Music Committee Chairman for Senior Dance, '43; Trio, '42, '43, '44; Sextet, '41, '42; Music Committee Chairman for Junior Prom, '43; Pep Club, '44; U-Hi Lights Staff, '43, '44; Victory Corps, '43; Bible Study, '41, '42, '43, '44; Intramurals, '40, '41, '42; Girls' Trio in Music Contest, '44; National Honor Society.



SENIORS



"Asta"

JUANITA JACOBSON

"Love gilds the scene, and women guide the plot."

Entered from Lafayette in '43.



*lots of luck
Patsy Jean*

PATSY JEAN KARSNER

"Women like not only to conquer, but to be conquered."

Entered from Savre in '43; May Queen Court, '41, '42; Girls Glee Club, '43-'44; Victory Corps, '43; Member of Red Cross Home Nursing Corps, '43-'44; Girl Reserves, '43-'44.

DIANNE ELIZABETH LeSTOURGEON

"A daughter of the Gods, divinely tall, and most divinely fair."

Entered from Henry Clay in '42; Radio Plays, '42, '43, '44; Girl Reserves, '42, '43, '44; Girls' Glee Club, '42, '43, '44; Victory Corps, '43; Bible Study, '43, '44; Masque and Gavel, '43, '44; Christmas Program, '43; Pep Club, '44; Senior Issue of U-Hi Lights, '44; National Honor Society, '44; Senior Play Cast, '44.

*I know what a true friend I told met you.
Dianne*



EVA LaRUE LEWIS

"As good be out of the world as out of fashion."

Entered from Junior High School; Girl Reserves, '41, '42, '43, '44; Outing Club, '41-'42; Girls' Intramurals, '41, '42, '43, '44; Intramural Volleyball Sports Manager, '40-'41; Archery Sports Manager, '41, '42, '43; Winner of Intramural Archery Tournament, '41-'42; Glee Club, '41, '42, '43, '44; State Music Contest, '40, '41; Bible Study, '41, '42, '43, '44; Modern Dance, '41, '42, '43; Modern Dance Recital, '43; Spanish Club, '42-'43; Girls' Victory Corps, '42-'43; Pep Club, '44; Chairman of Flowers and Costumes Committee for Junior Prom, '43; Senior Play Production Staff, '44; Senior Issue, '44; Attendant to Junior Prom Queen, '44; Page to State P.T.A. Conference, '44; Decoration Committee for Christmas Dance, '43; National Honor Society, '44.

Love to a good friend + sweet girl - Mary



CAROLYN CRAIG McMEEKIN

"Those about her, from her shall learn the perfect ways of honor."

Entered from Elementary School; Intramurals, '40, '41; Outing Club, '40; French Club, '40, '41, '42; Treasurer, '41-'42; Mardi Gras Court, '42, '43; Glee Club, '41, '42, '43, '44; Mixed Chorus, '42; Bible Study, '41, '42, '43, '44; Girl Reserves, '41, '42, '43, '44; Secretary, '42-'43; President, '43-'44; Southeastern Conference Delegate, '43; Interclub Council, '43, '44; Co-Ed Forum, '42, '43; Student Council, '40-'41, '42-'43; U-Hi Lights Staff, '41, '42, '43, '44; Social Editor, '42-'43; Associate Editor, '43-'44; Senior Issue, Chairman of Will Committee; Scrap Metal Committee, '42, '43; Girls' Victory Corps, Secretary, '42-'43; Modern Dance, '41, '42, '43; Radio Plays, '43-'44; Production Staff of Senior Play, '44; Masque and Gavel, '43-'44; Pep Club, '44; Attendance Committee; Decoration Committee for Junior Prom, '43; Bid Committee for Senior Dance, '43; National Honor Society, '44; Maid of Honor to Prom Queen, '44.

*Until another Spanish class
Greenberry Marshall*



GREENBERRY SIMMONS MARSHALL

"Life is not so short but that there is always time enough for courtesy."

Entered from Hamilton Grammar School in '39; Hi-Y Club, '41, '42, '43, '44; Social Committee, '43-'44; Victory Corps, '42-'43; Bid Committee for Junior Prom, '43; Glee Club, '40-'41, '43-'44; Junior Prom Attendant, '43; Mardi Gras Court, '43; Spanish Club, '42-'43; Bible Study, '42, '43, '44; Radio Plays, '43-'44; Senior Play Production Staff, '44; Bid Committee for Senior Dance, '43; Scrap Metal Drive, '42-'43; Intramurals, '40-'41.

SENIORS

GENE CARLTON MARLOWE

"Ah, why should life all labor be?"

Entered from Jefferson Davis in '37; Herald-Leader Track Meet, '39; Intramurals, '41, '42, '43; Outing Club, '41-'42; Hi-Y Club, '41, '42, '43, '44; Treasurer, '44; Glee Club, '41, '42, '43; Bible Study, '41, '42, '43, '44; Radio Plays, '42, '43; Dramatics Club, '42-'43; Bowling Champions, '43; Masque and Gavel, '43; President, '43; Hi-Y Interclub Council, '43-'44; Delegate to State Hi-Y Conference, '43; Basketball "B" Team, '41, '42, '43; Manager "A" Team, '44; Attendant to Junior Prom Queen, '44.



DAVID LEONARD MORTON

"A schoolboy's tale, the wonder of an hour."

Entered from M.M.I. in '42; Hi-Y Club, '41, '42, '43, '44; Boys' Glee Club, '43, '44; U-Hi Lights Staff, '43-'44; Advertising Manager, '43-'44; Mardi Gras Court, '43; Senior Play Cast, '44; Radio Plays, '43-'44; Dramatics Class Plays, '43-'44; Bible Study, '41, '42, '43, '44; Victory Corps, '43.



David Morton

FLOYE AVIS MULLINAUX

"God's greatest creation is a good woman."

Entered from Corbin Central School in '40; Girls' Glee Club, '40, '41, '42; Speech Club, '40-'41; Secretary-Treasurer, '40-'41; Girl Reserves, '41, '42, '43, '44; Treasurer, '42-'43; Vice-President, '43-'44; Chairman of Program Committee, '43-'44; Kentucky High School Press Association Delegate, '41; Secretary-Treasurer of Sophomore Class, '41-'42; Chairman of Bid Committee for Sophomore Dance, '42; Girls' Intramurals, '41, '42, '43; Bible Study, '41, '42, '43, '44; Co-Ed Forum, '42-'43; French Club, '42-'43; U-Hi Lights Staff, '41, '42, '43, '44; Proofreader, '42, '43, '44; Business Manager, '43-'44; Girls' Victory Corps, '42-'43; Secretary-Treasurer of Junior Class, '42-'43; Mardi Gras Court, '43; Inter-Club Council, '42, '43, '44; Decoration Committee for Junior Prom, '43; Check-Up Committee for Christmas Dance, '43; Radio Plays, '44; Pep Club, '44; Junior Issue of U-Hi Lights, '43; Senior Issue of U-Hi Lights, '44; Chariman, Statistics Committee, '44; Assistant Director, Dramatics Class Play, '44; National Honor Society, '44; Senior Play Cast, '44.



Floye Mullinaux
A1

NANCY KATHERINE O'HARE

"A loyal friend, one tried and true, to give advice, encourage you."

Entered from Nicholasville in '43; Girl Reserves, '41, '42, '43, '44; Home Ec. Club, '41; Science Club, '42-'43; Drum Majorette, '42-'43; Paper Staff, '43; Pep Club, '44; Assistant Librarian, '43.



Nancy O'Hare

ELIZABETH RIDGELY PARK

"Wit and wisdom are born with a woman."

Entered from Elementary School; Girl Reserves, '42, '43, '44; Girls' Glee Club, '41, '42, '43, '44; Outing Club, '41; French Club, '42-'43; Intramurals, '41, '42, '43, '44; Radio Plays, '44; Mardi Gras Court, '43; Bible Study, '42, '43, '44; Victory Corps, '43; Vice-President of Freshman Class, '41; Tennis Manager, '43; Golf Manager, '44; "Let Me Come Back" Cast, '44; Food Committee for Sophomore Dance; Chairman of "This 'N That" committee; Junior Issue of U-Hi Lights, '43; Program Committee of Girl Reserves, '43; Treasurer of Sophomore Class, '42; U-Hi Lights Staff, '42, '43, '44; Exchange Editor, '42, News Editor, '44; Telescope staff, '44; Pep Club, '44; Senior Issue; Junior Prom Court, '43, '44; Senior Play Cast; Bid Committee for Junior Prom and Senior Dance; Social Committee, '42, '43, '44; Masque and Gavel, '44; National Honor Society, '43, '44; Student Council, '44.



Ridgely
(smoken)
Park

PAUL ROBBINS POWERS

"The busy bee has no time for sorrow."

Entered from Elementary School; Orchestra State Contest, '41; Orchestra, '41, '42, '43; Tennis Team, '41, '42, '43, '44; State High School Tennis Tournament, Singles and Doubles, '42; Senior Play Set, '43; Senior Quintet; Senior Play Production Staff, '41; U-Hi Lights Staff, '43-'44.



Elis Powers

SENIORS

Betty Ree



BETTY REE RHOADS

"She profits most who serves best."

Entered from Elementary School; Girls' Glee Club, '41, '42, '43, '44; Mixed Glee Club, '41, '42, '43; Treasurer, '42; Basketball Team, '42-'43; Chairman of Girl Reserves Food Committee, '41, '42, '43; U-Hi Orchestra, '39, '40, '41, '42; Inter-Club Council, '41-'42; Bible Study, '41, '42, '43, '44; State Music Festival, '41, '42, '43, '44; All-State Chorus, '42, '44; All-State Orchestra, '41, '42; Outing Club, '41; Intramurals, '41, '42, '43, '44; Secretary, '41-'42; Vice-President, '42-'43; Modern Dance, '42; Victory Corps, '42-'43; Scrap Metal Committee, '42-'43; Pep Club, '44; Regional Music Contest, '44; Solo, '44; Girls' Trio, '44; Mixed Quartet, '44; Production Staff of Dramatics Class Plays and Senior Play, '44.

Glenna Ritchie



GLENNA LAURA RITCHIE

"A sweeter girl ne'er drew breath."

Entered from Sayre College in '42; President of Freshman Class, '40-'41; May Day Attendant, '41, '42; Music Festival, '40, '41, '42; Girl Reserves, '42, '43, '44; Glee Club, '42, '43, '44; Victory Corps, '43; Junior Prom Attendant, '43; Bible Study, '42, '43, '44; Red Cross, '43-'44; Spanish Club, '43; Radio Plays, '44; Senior Play Cast, '44; Secretary of Senior Class, '43-'44; Pep Club, '44; Decoration Committee for Senior Dance; Dramatics Class Plays, '44; U-Hi Queen Bee Representative, '44.



Betty Sageser

BETTY BARROW SAGESER

"Promise is most given when the least is said."

Entered from Cassidy in '39; Girl Reserves, '41, '42, '43, '44; Student Council Representative, '42-'43; Intramurals, '43-'44; Bible Study, '42, '43, '44; National Honor Society, '44.

A.P.



ARTHUR PATRICK SCHNEIDER

"Tho silent there is conversation in his eye."

Entered from Nicholasville in '43; Science Club and Convention, '40-'41; Safety Patrol Member, '40, '41, '42; N.H.S. Band, '40, '41; Signed Honor Roll Book, '41, '42, '43; Football Team, '41, '42, '43, Center, '42-'43; Corporal in Victory Corps, '42-'43.



Betty Sue Scott

BETTY SUE SCOTT

"If music be the food of love, play on."

Entered from Elementary School; Girls' Glee Club, '41, '42, '43, '44; U-Hi Orchestra, '40, '41, '42, '43; Girl Reserves, '41, '42, '43, '44; Girls' Victory Corps, '43; Mixed Glee Club, '43-'44; Outing Club, '42; U-Hi Lights Staff, '43-'44; Junior Issue of U-Hi Lights, '43; Girls' Intramurals, '41, '42, '43, '44; Vice-President, '43-'44; Badminton Sports Manager, '42-'43; Winner of Intramural Pin, '43; Winner of Badminton Tournament, '42, '43, '44; French Club, '40, '41, '42; State Music Contest, '41, '42, '44; Radio Plays, '43; Girl Reserve Basketball Team, '41, '42, '43, '44; Winner of City Girls' Tournament, '42, '43; Bible Study, '42, '43, '44; Mardi Gras Court, '42; Pep Club, '44; Mixed Quartet, '43; Sextet, '42, '43; Girls' Trio, '43, '44; Represented U-Hi in radio spelling bees, '42; Chairman of No-Break Committee for Christmas Dance, '43; Christmas Program, '43.

Harry Scott



HARRY BURGUYNE SCOTT, JR.

"Even though vanquished, he could argue still."

Entered from Hamilton Grammar School in '40; Hi-Y Club, '41, '42, '43, '44; Bid Committee for Sophomore Dance, '41; Bible Study, '42, '43, '44; Outing Club, '40-'41; Spanish Club, '42-'43; Bid Committee for Junior Prom, '43; Junior Prom Attendant, '43; Mardi Gras Court, '43; Victory Corps, '42-'43; Radio Plays, '43-'44; Pep Club, '44; U-Hi Lights Staff, '43-'44; Circulation Manager, '43-'44; Senior Play Production Staff, '44; Scrap Drives, '43, '44.

SENIORS

EUGENIA CAROLYN SILAS

"Ah, sleep, it is a gentle thing, beloved from pole to pole"

Entered from Georgia in '42; Senior Play Cast, '44; Girl Reserves, '43, '44.



NANCY LEIGH SKEEN

"The hand that hath made you fair hath made you good."

Entered from Tilghman in '42; U-Hi Lights Staff, '42, '43; Feature Editor, '43-'44; Masque and Gavel, '43, '44; Radio Plays, '42, '43, '44; Bible Study, '42, '43, '44; Girl Reserves, '42, '43; Senior Play Set, '43; Senior Play Cast, '44; Art Editor of Telescope, '44; Christmas Program, '43; Victory Corps, '43; Scrap Drive Committee, '42; Senior Issue, '44; "Let Me Come Back" Cast, '44; Junior Prom Queen, '44.



*Eva I'm really
wuld about you in
as David would
say
ME*

JAMES WESLEY STEINER

"I'll put a girdle around the earth in forty minutes."

Entered from St. Catherines in '38; Hi-Y Club, '41, '43; Intramurals, '41; French Club, '41, '42; Softball Team, '42, '43; Mardi Gras Court, '42, '43; Bible Study, '41, '42, '43, '44; Victory Corps, '43; U-Hi Lights Staff, '43, '44; Photographer, '43, '44; Safety Patrol, '43; Senior Play Production Staff, '44; Senior Issue of U-Hi Lights, '44; Boys' Glee Club, '44.



James Steiner

LOLA JUANITA STOKES

"Here is a dear and true industrious friend."

Entered from Elementary School; Glee Club, '41, '42, '43, '44; French Club, '40-'41; Girl Reserves, '41, '42, '43, '44; Girl Reserve Basketball Team, '41, '42, '43, '44; City Champions, '43; Girls' Intramurals, '41, '42, '43, '44; President, '43-'44; Mixed Glee Club, '43, '44; Bowling Tournament, '44; Outing Club, '42; U-Hi Lights Staff, '42, '43, '44; Exchange Editor, '43-'44; Music Contest, '42, '43, '44; Pep Club, '44; President, '44; Mixed Quartet, '43, '44; Sextette, '42-'43; Bible Study, '42, '43, '44; All-State Chorus, '43, '44; Sports Manager of Baseball, '41-'42; Sports Manager of Basketball, '42-'43; Senior Play, Prompter, '44; Page to P.T.A. Conference, '44.



*"So a gal's
won't
jazz"*

CORA MAE STRAIN

"She knows her man, and when you rant and swear, can draw you to her with a single hair."

Entered from Nicholasville in '43; President of Freshman Class, '40-'41; President of Sophomore Class, '41-'42; Home Ec. Club, '40-'41; Band, '40, '41, '42; Drum Majorette, '41, '42, '43; Girl Reserves, '41, '42, '43, '44; Secretary, '42-'43; Glee Club, '42-'43; Pep Club, '41, '42, '43, '44; Senior Dance Committee, '43; Assistant Librarian, '42-'43; Senior Issue, '44; Decorating Committee for Banquet, '42-'43.



*"Jo a grand gal"
"Cora Mae"*

BETTY JO UNDERWOOD

"I's wicked I is; I's mighty wicked, anyhow I can't help it."

Entered from Nicholasville in '43; Girl Reserves, '41, '42, '43, '44; Glee Club, '41, '42, '43; Science Club, '41, '42, '43; Home Ec. Club, '41; Pep Club, '41, '42, '43, '44; Paper Staff, '41, '42, '43; Speech Club, '41, '42; Orchestra, '41.



**PAGE(S)
MISSING**

The Will

We, the seniors of 1944, being low in I. Q. and spirits, too (you know how hard they are to get now, anyway), do declare this to be our last will and testament.

Tommy Asbury leaves his friendliness, which has made him one of U-Hi's most popular seniors, to Betty Ann Shropshire.

Tommy's tall pal, George Willmott, leaves his "Howdy" and the Willmott Waltz to Frank Bardwell, and his many admirers to the entire school.

Willie Allen leaves his voice to Hammet, his chickens to Brewer (to keep Brewer's rabbits company) and his pretty little gold basketballs to Miss Galloway.

President Wilkie leaves his ability for holding office to Bud McMeekin and his intelligence to the sophomores (who could certainly use it!) His position on the all-state team goes to Griffin.

The Damon-and-Pythias act which they've done so well, Gush Foushee and Jimmy Steiner leave to Fergus and O'Bannon. Their duties at the Guignol they cheerfully relinquish to anyone who'll have them.

Morris Beebe leaves his flashy sweaters to Don Evans, his golfing ability to Dunn, and his wolfishness to Chubbie, who does pretty well on his own!

Her "built-in swing and sway" inherited from Congleton, Glenna Ritchie leaves to Missie Van Meter.

Betty Sue Scott's interest in the armed forces—except for one or two special ones—goes to Nancy Potts.

Glee clubs of future years are to be made richer by the inheritance of Frankie Horlacher's voice. Her collection of Army shoulder patches she prefers to take with her.

Pep Club President Stokes leaves her overabundance of school spirit to Beth Bicknell. Her red hair (minus the usual accompanying temper) goes to Charlotte Garr.

Alice Weil leaves her petiteness to Elsie Meyer.

Martha Crutchfield leaves her quietness in class to be shared by Horine and Winfree. (This the faculty should appreciate!)

Pat Evans' bent for digging up dirt for the scandal column is inherited by Joe Mathews, who has already proved himself very able in this department.

His editorial duties are left by Editor Underwood to anyone sucker enough to take them. His

wonderful sense of humor is put on reserve for the next exchange editor.

Floye Mullinaux leaves her artistic talents to everyone in general. Her Art she is definitely taking with her.

A. P. Schneider leaves his ability to be seen every Saturday night with a different blonde to Dunn, already a past master at the art.

Our Georgia peach, Carolyn Silas, leaves her independence to Betty Muir and her southern drawl to Pat Storey.

Phyllis Valleau leaves her good-looking "figger" to Peggy Berryman.

Esther Brumfield leaves her reserved seat at Jones' to Carolyn Hansen.

Jane Clark, Patsy Karsner, and Ann Carter want to pool their riotousness and divide it between Junie Roberts and Jane Garrett.

Her ability for choosing a seat in the back of the room for every class she takes, is left by Nancy O'Hare to Dal Thorp.

Betty Jo Underwood leaves her talent for Negro dialect to Joan Specht. We feel that this should enhance Specht's rendition of "Stormy Weather" enormously.

Eva Lewis leaves her strikingly stylish clothes to Betty Joe Harris—another likely candidate for U-Hi's best-dressed gal.

Queen Nancy of the House of Skeen leaves her reign over the Junior Prom to all the girls of next year's senior class. She's taking with her an active interest in the Merchant Marines.

Dianne Le Sturgeon leaves her very secret love to Elaine Ashley. Be good to Moose, will you, Elaine?

Ridgely Park's wit is to be divided between Deiss and Glenn (neither of whom needs it) as there is far too much for one person.

Vella Wise and Harry Scott are giving up their noon parking place at Jake's to the Henry Clayans, who'll no doubt be glad to have it back.

David Morton leaves his tales with sound effects to Glenn. His motor bike goes to Bill and Wallace.

Nita Jacobson's naval mailing list goes to Beverly Brown, who, although she has sworn off men, might some day find a use for it.

Jake Graves leaves his friendliness to everyone and his ability to get along with Miss Peck to the history classes of coming years.

The bottle of Burma Shave which has been

(Continued on page seventeen)

**PAGE(S)
MISSING**

Sport Sparks



U-Hi basketball fans this year saw their big Purple-clad boys fight their way through a tough nineteen-game season plus three tournaments to roll up an impressive record of twenty-one wins against seven defeats.

At the first call for basketball practice, Coach Lyman Ginger told the boys they could make what they wanted of the season; they had the size; if they wanted to win, it would take work, training, concentration. Practice every day on fundamentals and frequent scrimmages marked the first month of practice, and on November twenty-third the Purple quartet played their first game of the season with Lancaster, losing by a score of 19-17. This low-scoring setback for U-Hi showed that the team was lacking in the fight element and Coach Ginger set to work to put a little pepper in the boys. That he was successful was shown by the scores of most of the games from there on out. Williamstown, Olive Hill, a highly touted team, Winchester and Owingsville, fell in rapid order before the Purple onslaught, and by Christmas U-Hi was rated one of the strongest teams in Central Kentucky and was invited to the Central Kentucky High School Invitational Tournament.

The first game in the tournament was U-Hi all the way over a smaller Burgin team, but in the second game Cynthiana's more experienced five beat the Purples by nine points and went on to win the tournament.

The first scheduled game of 1944 was with Lafayette, and here U-Hi got its worst loss of the season by a score of 36-19. Perhaps this was all for the better, though, for it seemed to settle the team down and they opened up with both barrels to beat Wilmore, 42-24; Kavanaugh, 32-24; Athens, 42-10; Versailles, 41-10; Georgetown, 31-22.

Probably the cause of this impressive line of victories was the pep talk that Coach Ginger gave the boys before the Wilmore game. Nothing could have restored the broken hopes and injured pride received from the defeat by Lafayette better than those all inspiring words — words that put fight and team spirit into the boys, two things they had missed previously and needed greatly in the trying contests that were to follow.

They went out there and beat Wilmore and the four teams that followed. Then Lafayette again marred their record by handing them a 37-26 de-

Sport Sparks

feat. It hurt them a lot. Clark County and Mt. Sterling defeated the Purples in quick succession, the latter being quite a heart breaker. Then, once again, the Purples rose from the mires of defeat, finishing the regular playing season at home with a decisive victory over Kavanaugh and that abroad with two other lopsided affairs over Wilmore and Athens.

A week later, the District tournament arrived seeing the Purples defeat Athens in their bracket and Lafayette squeezing by Henry Clay in theirs. Again it was "U-High vs. Lafayette" in a grudge match with the Generals highly favorites. The boys from U-High thought differently though. They knew they had a job to do and they went on UK's floor with that object in mind. They did a good job. They blew up the Generals' foxholes to the tune of a 29-23 score and became the first U-High team to win the District in four years. They took the first game in the Regional from Burgin but lost the game with Madison in the semi-finals. It was a defeat that was hard to take but it wasn't brooded over. The Purples had a great team, a great coach, and a great season. It was ranked as one of the ten best teams in the state by Coach Shively of the University of Kentucky and was undoubtedly one of the best teams in the annals of U-High.

Besides basketball, the U-High students have

participated in numerous spring sports this year; the two main ones being track and golf.

In track, the inexperienced contingent of U-High lads did very well considering how little they knew about the sport. They worked hard and diligently under Coach Ginger and caught on to the track routine very fast. The squad entered two track meets, one with Lafayette and the other with Regional teams. In both meets the boys in purple showed up fairly well. Robin Griffin, Bunkie Wilkie, Hugh Hammet, Jimmy Mulloy were boys who did exceptionally well in their events.

In golf the U-Hians were also active although not too successful. The team played two matches, both with Henry Clay, and came out with a tie and a loss. They also participated in the state tournament and showed up only fairly well. The squad was composed of veteran golfers Tom Underwood and Morris Beebe and new-comers Tom Asbury, Jim Glenn, and "Chubby" Wachtman.

U-Hians also enjoyed softball, tennis, and archery this year, although they did not enter into competition with other schools in these sports. Therefore, no awards or special recognition has been given to the students taking part in these activities. But, however, they were extremely interesting to a large number of students in the school.

The Will

(Continued from page eleven)

handed down from Bob O'Brien to Solly Van Meter to Greenberry Marshall is now passed on by the latter to Wachtman.

Carolyn McMeekin leaves her leadership and always willing service to some as-yet-undiscovered junior or sophomore protege.

Jane Fugazzi bequeaths her constant good humor to Sara Hall and her ability to make friends to any new U-Hians.

As Eli Powers will soon be leaving Lexington skies to fly for Uncle Sam, he leaves to Jimmy Barker the post of Chief Airplane Spotter of U-Hi.

Gene Marlowe leaves his gay shirts to Fred Luigart and his penchant for turning work in late to the typing class.

Betty Ree Rhoads leaves her general helpfulness and dependability to Shirley Younger.

Cora Mae Strain's enviable talent for dating

movie stars is left to anyone capable of taking her place. Nice work, if you can get it!

To Miss Peck we leave a last line to her presidential jingle, reading thusly: Ro, Taf, Wil, Hard, Cool, Hoov, Ro, Ro, Ro (your boat?).

To Miss Anderson goes a paper staff that can get articles in on time.

Mrs. Mercer inherits a trig class that will pay attention and a geometry class that never says, "It's bound to be!"

To Miss Galloway we leave an ice cream cone to eat in the hall.

To take Willie's place in chemistry we leave Mr. Ginger a large baby doll.

Mr. Briggs receives, with our compliments, one well-worn ghost.

And to all the faculty we leave our heartfelt appreciation for the assistance and understanding you've shown us through the years.

Ten Years Hence

"Got it!"

"Right!"

"What's that name again? Carolyn McMeekin, the novelist? Yes, I remember, she's the author of **"The Corpse with the Pale Red Eyes,"** **"Shadows of a Hangover,"** and **"The Gentle Art of Murder."** You say she's a suspect. I see, writing murder stories affected her mind. What? What's that? Senator Underwood was there, too. What a setup!"

"Have I got this right?"

New York City, May 26, 1954. At the swanky penthouse of that well-known playboy, George Willmott, at exactly midnight, the body of Supreme Court Justice, Raymond Abell Wilkie was found sprawled in a leopard skin chair.

"Why a leopard skin chair? Oh—Willmott's interior decorator was Eva La Rue. Good publicity for her. That Willmott has class as well as wives. Who's his latest? You don't say! Juanita Jacobson? Well, he's broken Manville's record. What—you want the rest as you gave it to me; okay, here goes."

He had been murdered with a rare Tibetan weapon from the collection of the world famous explorer and violinist, Paul (Eli) Powers.

Gathered at the pent house were many famous people. At the time of the murder, William Henry Allen and his charming wife, Frances Allen (nee Horlacher) were singing a duet, a symphonic arrangement of the famous aria *Pistola Portearon Madre*, or *Pistol Packing Mamma*. The gusto of their singing completely drowned the noise of the death struggle.

The body was discovered by Betty Jo Underwood, Ph.D., A.M., D.D., B.S.F., M.B.A. and L.L.L., the famous research scientist who was on her way to powder her nose. Dr. Morris Beebe was sent for immediately, but he sent his regrets, saying he was involved with a more "interesting" patient. (Your reporter has it from that reliable source, Patricia Evans, columnist for the *New Yorker*, that the patient was none other than that "Glamozon, Alice Weil, well known show girl." But back to the shocking murder.

As Dr. Beebe was "involved," Dr. Henry ("Gush" to his lady patients) Foushee was summoned. His thorough examination resulted in a dramatic diagnosis of 19 words, "Strangulation and over-exposure may have done it, but it was a dose of

Foushee's Cure All that finished him!" That well known Esquire photographer, James Steiner, who photographed the scene of the crime, discovered a Tibetan knife protruding from the back of the late Supreme Court Justice. The murderer's identity was nearly discovered in one of Steiner's pictures but turned out to be Mr. Steiner's thumb.

Floye "Strip" Mullinaux, who has replaced Gypsy Rose Lee and is really wowing them at Jake Graves' "Turkish Paradise Club" (no cover charge or any other kind of cover) sank hysterically into the arms of Monogram's leading star, Greenberry "Swoon-King" Marshall. "I saw her—with a smoking revolver, and that's not all that was smoking."

"Saw whom?" questioned Senator Underwood.

"I saw Ridgely Park coming out of there, where the body . . ." But she was prevented from saying more when gorgeous "Molly" LeSturgeon snatched her from Greenberry Marchshall's arms. (Miss LeSturgeon is co-starring with the "Swoon-King" of Nomagram Pictures and it is rumored——) (Really!)

Miss Park blew a square ring down from the chandelier and casually said, "But he was murdered with a knife, poor boy! I was carrying only a revolver." Miss Park, well known for her witty monologues, continued, "One more tight squeeze like that and where will I be——"

Police Chief A. P. Schneider admits that the murder has many puzzling angles and curves. "In my entire experience with murder, I have never been so bewildered." Perhaps it was the presence of beautiful Ann Carter, currently starring in "She Dunn Him Wrong!" Highlights of the evening was her dramatic accusation, "Betty Sue Scott did it!! When Raymond was a judge he sentenced her for illegal man-hunting and she's been out to get him ever since she graduated from the Women's Reformatory."

Investigation revealed that Miss Scott was busy pursuing Kentucky Colonel Thomas Asbury, all evening. Col. Asbury has christened his future Derby winner, "Betty."

No sooner had one suspect been cleared than another was indicated. The spotlight of suspicion turned to that famous woman athlete, Lola Stokes. Police Chief Schneider tried to prove that "Muscles" Stokes was responsible because of her strength. He even went so far as to say that red-

hair is always accompanied by a violent—but that was as far as Police Chief Schneider got. Stokes had silenced him.

As the inquest threatened to turn into a riot, the riot squad was sent for. David Morton arrived on his motorcycle with Glenna in the side car and six little sidecars trailing along behind.

Your reporter tried to interview that well known Wall Street magnet and his charming wife, who exclaimed, "But Har-ree, publicity like this would be hard on the kiddies!"

At that moment Mrs. Jane Fugazzi Willmott. (Play-boy Willmott's third wife) came rushing in crying, "Has anyone seen my former husband?" To which "Wolf" Willmott replied, "Howdy!" Wife No. 3 said that she had a premonition of danger and came immediately to look after "Georgy."

Riot Squad Captain Morton announced the arrival of wife No. one and four. Namely, Mrs. Phyllis Valleau Willmott, who now runs a "How to Lose Friends and Influence Enemies School!" Said wife No. one, "The two weeks of my married life with George gave me the idea!" Wife No. four, Mrs. Betty Ree Rhoads Willmott, renowned chemist and research scientist, famous for her discovery of dehydrated water, said she had nothing to say to the gentlemen of the press.

Police Chief Schneider who had come to by now, decided to lineup the remaining guests at the party and establish their alibis. He motioned to a tall, attractive brunette.

"Name, please . . ."

"Mary Esther Brumfield . . ."

"Where were you at the time of the murder?"

"Senator Underwood and I were talking. You see, I'm in charge of the eighth term for F.D.R. in Jessamine County. Pat Evans says in her column that Nicholasville's ten votes may swing the election, and I want to say . . ."

"That will be enough . . . next please, name?"

"Nancy O'Hare. . . I was with Senator Underwood, too. We were discussing campaign funds. You see, I made my millions charging 25 cents an hour for star gazing at the observatory."

"Next . . ."

"Cora Mae Sinatra. I was with Frankie at the time of the murder. We were swooning together."

"Next . . ."

"Betty 'Goldie' Sageser, me and my goil friend 'Cootie' Crutchfield were having a 'tate a tate' at the bar. We don't have nothing t'do with the

moiderers. I'll have you know we are only sheltered little goils and furdernore. . ."

"Yes, I'll vouch for them," broke in Gene Marlowe, "They used to work at my distillery and now they're cigarette girls at Jake's 'Turkish Paradise Club'."

The inquest lasted far into the night. Among the other guests questioned was the famous novelist and playwright, Carolyn Silas whose last play has been running for three years, "Cotton Road." This play was banned in Boston as Jane Clark, prominent society leader and critic said, "While this play gives one a true insight on 'life' in the South, I feel that it is not the thing for children to take their parents to, unless they give them a thorough lecture on 'life' first." The success of this play has been phenomenal. Also among the guests was that powerful Powers model, "Red" Karsner.

Finally, at four in the morning, Chief Schneider announced that the murder was still unsolved and that if anyone had any theory as to who had committed the crime to speak now. A deep voice said, "Tell 'em, Tom!!"

Senator Underwood said, "Ladies, Gentlemen and Republicans, I have a theory which solves the murder completely, but first I want to say, 'Hello Chick,' and I wish to state my political platform, namely, more relief for the benefit of starving Armenian pipe-fitters and furthermore . . ."

And so on into the morning but still this brutal murder has not been solved. The criminal is still at large.

"That's the whole story. Shall I get out an extra? . . . Okay, call me back if there are any further developments."

* * *

Ten Minutes Later

* * *

"Hello . . . what!! Wait a minute, Stop the presses! You say it's all a mistake. But I don't see . . . playing dead! You mean to stand there with your bare teeth hanging out and tell me that a Supreme Court Justice pretended to be dead and did it so well, he fooled a doctor? Oh, Dr. Foushee! Well that explains a little but I still don't . . . when he was younger he was always cast as corpses in plays until his skill grew so great that half the time people didn't know whether he was acting or not. I see . . . well good-bye . . . I'm quitting the newspaper business for once and all. See you at the 'Turkish Paradise Club'."

The Murder Mystery

Following the selection of "A Murder Has Been Arranged" as the play, the cast was selected by Mr. Briggs from those trying out. The selections were the best possible and everyone agreed that the murderer should be Tommy. Ridgely was the natural choice for "the woman of the world" secretary part. Bunkie couldn't have made a better victim or ghost; and Dianne fulfilled requirements as "a beautiful young girl of 20" and was excellent as Beatrice.

Mr. B. must have had Glenna and Willie in mind when he wrote in those two parts of the servants, for they stole the show as Archibald and Clementine. It was hard to acquire a cockney accent but Floye did just that to complete her characterization of Mrs. Wragg and an excellent job, too. Beebe kept having trouble with his cigarettes and just loved to practice that scene and also the one where he and Dianne — well, you know. She confided to me that she hammed it on purpose just to get to rehearse; and then when she didn't mess it up, Beebe did, so that was well rehearsed by play night. Nancy created the most atmosphere and even scared those who had seen her do her part many times. David had a time trying to dodge the people who would try to trip him on his way to the front, especially those

front-row ruffians.

Then there was the time Bunkie started to drink his cocktail (there's not space to print their story) and found gushes of foam and bubbles oozing forth; just an Alka-Seltzer supplied to Woods by the Props Dept. Pat, the assistant director, was always running up the hall to get someone for a cue. While anyone wasn't on stage, he could be found or rather heard, singing with the rest of the quartet.

No play can be produced without a set, and we were no exception. The building of the set provided no end of amusement and hard work for the stage crew. When we had to put up the scaffold the only two boys around to do it were "Gush" Foushee and "I. N." Steiner. They set the first three sections up without any trouble but it was all they could do to haul the platform on top. Mr. Briggs stood watching and chewing his finger nails alternately. Once on top it was discovered that the platform was too small. After dropping it on the floor and carting it over to Mr. Lily's office, were were informed that it had been put up wrong. (A word of appreciation should be put in for long-suffering Mr. Lily, who has lent us everything from nails and wire to the Guignol's rheostats.)

Memories

(Continued from page fourteen)

having showed concern regarding Mary Agnes Amick early in the year, and, toward the end of the year, interest in the Navy!

Carolyn Silas, Betty Sageser, and Betty Sue Scott refuse to tell us their deepest secrets, but we have it on reliable sources that they had interests in the University A.S.T.P.

The question of the year is: who is the secret love in the life of Pat Evans? Reports have it that "Big Bunk" is still aces, but who knows?

Mecan flashed a lot of letters around at the first of the year with "John Marlowe" in the return address, but lately we haven't heard much about John. She and Stokes haven't come to blows yet over Willie, but maybe that's because of Stokes' more than casual interest in Bunkie and Beebe.

Eva, who for awhile could keep us posted on all the latest troop movements, finally settled down

to being just another one of Willie's fans. We can't say that we blame her, because Willie's one grand guy.

Blonde Nancy O'Hare is very quiet about her love affair but, of course, she couldn't fool us. Nancy's heart is in the Marine Corps. Incidentally, that Marine has a pretty swell gal there.

Cora Mae will give Nancy an argument any time that the Army is the only branch of the service as far as she is concerned. However, at the first of the year, graduate Harry Gorham and "Mae" weren't doing so badly, and as you know, he's in the Marines too. (Or is it the Navy?)

No scandal column would have its full measure of dirt without a word about our "honored" editor, T. R. After his New Year's Eve suicide attempt was unsuccessful, he played the field, dating the old flame, Shearer, and a certain blonde Sophomore.