

UNIVERSITY OF  
**KENTUCKY**<sup>®</sup>

see  
blue.

**Fact Booklet** 2008 - 2009

**UK**  
UNIVERSITY OF  
KENTUCKY



# Table of Contents

Letter from President Lee T. Todd, Jr.	2-3	Grant and Contract Awards	29
UK Vision and Mission	4	Research and Development	30
Enrollment	5-9	University Endowment	31
First-year Student Profile	10-11	New and Renovated Facilities	32
Retention and Graduation Rates	12-13	Land and Space	33
Degrees Conferred	14-16	General Equipment Inventories	34
Annual Tuition and Fees	17	Library Collections	35
Full-time Employees	18-19	Benchmark Institutions	36
Alumni and Student Origin Maps	20-21	Administrative Organization	37
Faculty Statistics	22-24	Board of Trustees	38
Faculty Salaries	25	Administrative History	39
Budgeted Revenue and Expenditures	26-27	UK Values	40
Private Giving	28		

January 2009

In compliance with KRS 164.250, I am pleased to provide you with the 2008-2009 Fact Booklet, a collection of current facts and statistics about the people and programs at the University of Kentucky. Many items in this booklet will be of interest to our stakeholders and the general public, including statistics on enrollments, retention, research expenditures, and faculty salaries. A summary of the 2008-2009 Operating and Capital Budget also is presented.

We are pleased to report that the University of Kentucky enrolled a record number of African American freshmen in Fall 2008. Nearly 350 Black first-year students chose to attend our institution, a net gain of almost 100 students over the previous year. UK also exceeded last year's record-setting number of degrees conferred. Over 5,800 students earned degrees in 2007-08, a 2.9 percent increase since last year. UK is having success as a full partner in Project Graduate, a statewide program designed to make completing a degree as convenient as possible for former students.

We are especially proud that our retention rate has jumped from the lowest rate in over a decade to what promises to be the highest rate in our history. The preliminary retention rate for the Fall 2007 cohort is 81 percent. This year's leap in the percentage of returning first-year students can be attributed to a variety of interventions in the Provost's *War on Attrition*, from increased emphasis on advising to our new "academic alert system" aimed at providing academically at-risk students with the support they need to succeed.

In the near future, several new facilities will come on-line to create the space needed for our teaching, research, and service programs. These buildings include a biological pharmaceutical complex building and a new patient care facility. We also are in the process of renovating or expanding several older facilities, including: the Livestock Disease Diagnostic Lab, the Cancer Center Radiologic Facility, the Center for Applied Energy Research, and the Schmidt Vocal Arts Center. Other facilities in the planning and design phase include the Gatton College Building Complex, the Law School Building, and a second Digital Village Building.

UK's proud accomplishments during the past year have occurred against a backdrop of increasingly dismal economic conditions for our state and nation. Despite the gloomy financial picture, our institution remains committed to becoming a Top 20 university. We fully understand, however, that achieving national prominence is only a means to an end. The citizens of Kentucky expect us to make significant improvements in people's day-to-day lives. Through the excellence of our teaching, research, and service, we hope to solve many of the social, economic, and health-related problems facing our Commonwealth.

Sincerely,

A handwritten signature in black ink, appearing to read "Lee T. Todd, Jr.", written in a cursive style.

Lee T. Todd, Jr.  
President

## VISION

The University of Kentucky will be one of the nation's 20 best public research universities, an institution recognized world-wide for excellence in teaching, research, and service and a catalyst for intellectual, social, cultural, and economic development.

## MISSION

The University of Kentucky is a public, research-extensive, land grant university dedicated to improving people's lives through excellence in teaching, research, health care, cultural enrichment, and economic development.

The University of Kentucky:

- Facilitates learning, informed by scholarship and research.
- Expands knowledge through research, scholarship and creative activity.
- Serves a global community by disseminating, sharing and applying knowledge.

The University, as the flagship institution, plays a critical leadership role for the Commonwealth by contributing to the economic development and quality of life within Kentucky's borders and beyond. The University nurtures a diverse community characterized by fairness and equal opportunity.

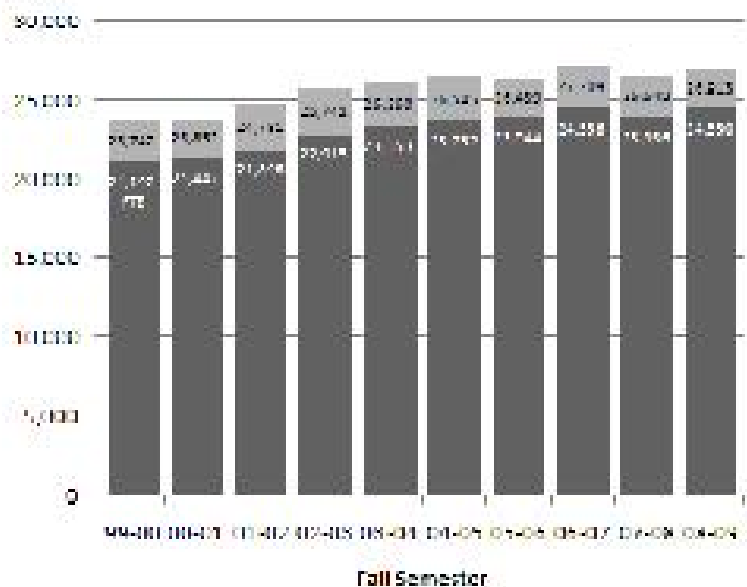
-- Adapted by the Board of Trustees, October 10, 2005

# ENROLLMENT - Headcount and Full-time Equivalent

## Fall 2008 Headcount

Level	Full-time	Part-time	Total
Undergraduate	17,324	1,618	18,942
Graduate	4,016	1,538	5,554
First Professional	1,536	22	1,558
<b>Subtotal (IPEDS)</b>	<b>22,876</b>	<b>3,178</b>	<b>26,054</b>
UG Auditors	0	46	46
Postdoctoral	248	0	248
House Staff	565	0	565
<b>Total (CPE)</b>	<b>23,689</b>	<b>3,224</b>	<b>26,913</b>

FTE calculations have been revised in accordance with CPE guidelines. The new method uses a formula that weights the number of student credit hours by students' degree level.



## ENROLLMENT - Fall 2008 at a Glance

		<b>% of Total</b>
Men	12,958	48.1
Women	13,955	51.9
<b>Total</b>	<b>26,913</b>	<b>100.0</b>

Full-time	23,689	88.0
Part-time	3,224	12.0
<b>Total</b>	<b>26,913</b>	<b>100.0</b>

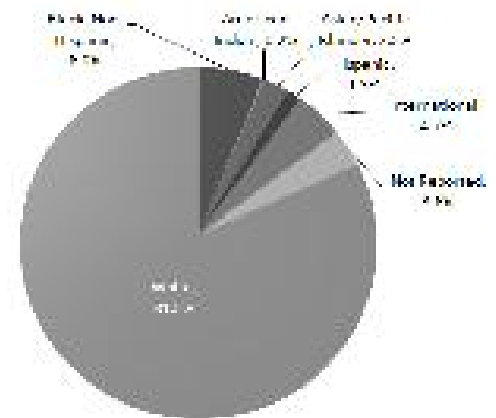
Resident	20,355	75.6
Non-resident	6,558	24.4
<b>Total</b>	<b>26,913</b>	<b>100.0</b>

		<b>% of Total</b>
Freshmen	5,460	20.3
Sophomores	3,992	14.8
Juniors	3,959	14.7
Seniors	5,180	19.2
UG Non-degree	397	1.5
<b>Subtotal Undergraduate</b>	<b>18,988</b>	<b>70.6</b>
Master/Specialist	2,755	10.2
Doctoral	2,391	8.9
Graduate Non-degree	408	1.5
<b>Subtotal Graduate</b>	<b>5,554</b>	<b>20.6</b>
First Professional	1,558	5.8
House Staff/Post Doctoral	813	3.0
<b>Total</b>	<b>26,913</b>	<b>100.0</b>

Note: Percentages may not total properly due to rounding.

## ENROLLMENT - Fall 2008 by Race/Ethnicity

	<u>Undergrad.</u>	<u>Grad.</u>	<u>First Prof.</u>	<u>Post Doc.</u>	<u>House Staff</u>	<u>Total</u>
Black, Non-Hispanic	1,234	293	87	9	4	1,627
Amer. Indian/Alaskan Native	39	12	3	0	0	54
Asian/Pacific Islander	420	104	81	29	37	671
Hispanic	243	86	14	4	7	354
International	212	895	20	125	11	1,263
Not Reported	470	211	57	22	216	976
White	16,370	3,953	1,296	59	290	21,968
<b>Total</b>	<b>18,988</b>	<b>5,554</b>	<b>1,558</b>	<b>248</b>	<b>565</b>	<b>26,913</b>

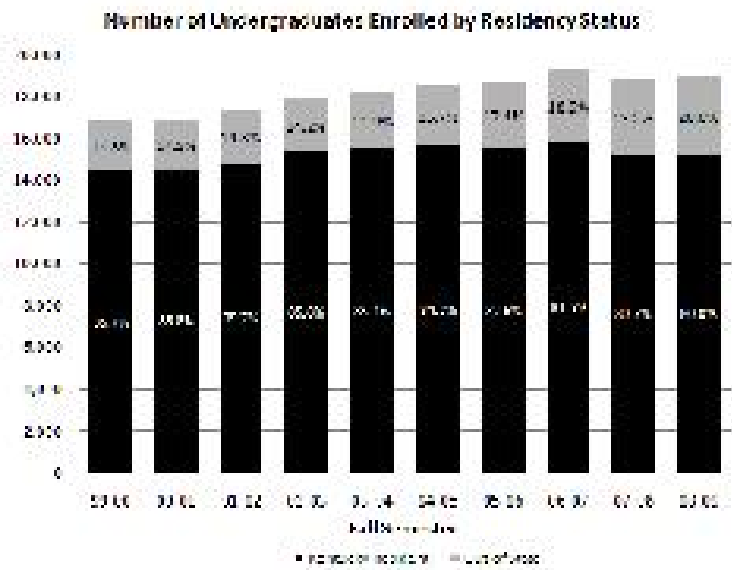


Total = 26,913



# UNDERGRADUATES - by Residency Status

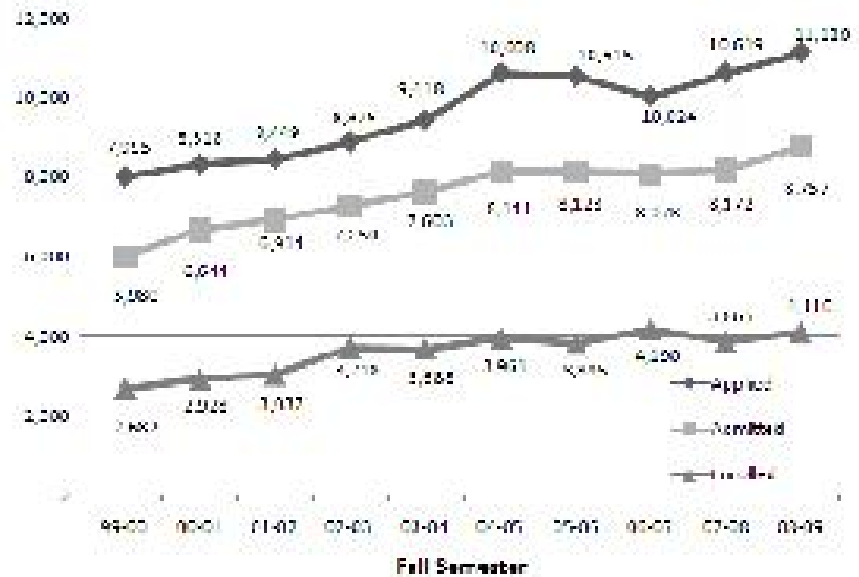
	<u>Kentucky Residents</u>	<u>Out-of-State Students</u>
Fall 2008	15,197	3,791
Fall 2007	15,196	3,634
Fall 2006	15,757	3,571
Fall 2005	15,481	3,251
Fall 2004	15,587	2,905
Fall 2003	15,486	2,704
Fall 2002	15,348	2,530
Fall 2001	14,820	2,464
Fall 2000	14,499	2,400
Fall 1999	14,441	2,406



# APPLIED, ADMITTED and ENROLLED

## First-year Students Fall 2008

Applied	11,120
Admitted	8,757
Enrolled	4,110
Admit. Rate	78.8%
Yield Rate	46.9%

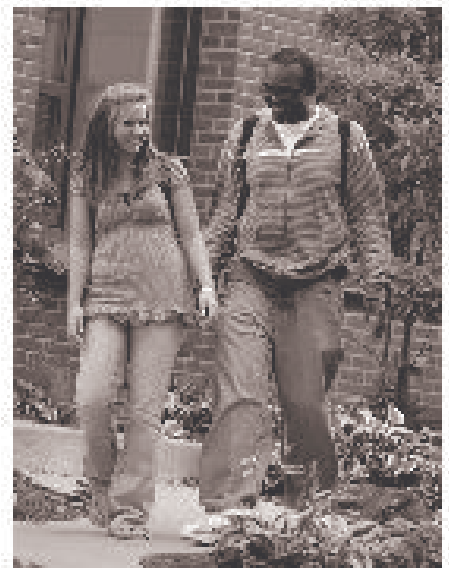


# FIRST-YEAR STUDENT PROFILE

In fall 2008, the University enrolled a record number of African-American and Hispanic Students.

	<b>2004</b>	<b>2005</b>	<b>2006</b>	<b>2007</b>	<b>2008</b>
Total	3,961	3,835	4,190	3,865	4,110
Female	2,110	2,050	2,237	2,021	2,099
African-American	264	143	294	255	347
Out-of-State	913	997	1,108	1,015	999
International	12	16	14	20	32
Full-Time	3,932	3,829	4,118	3,837	4,079
Governor's Scholars and					
Governor's School for the Arts	303	304	354	348	389
Merit Scholars	35	40	32	28	32
Valedictorians	157	137	122		133

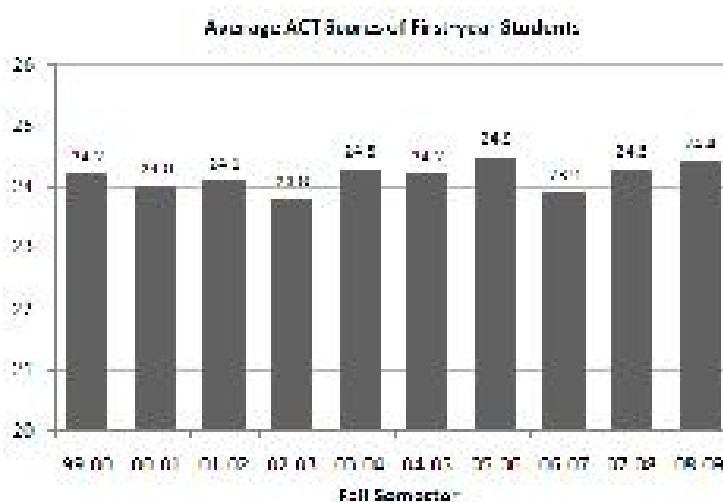
Note: Valedictorian information was not available for the 2007 cohort.



## ACT Scores - Entering First-year Students

<u>Year</u>	<u>N</u>	<u>Mean</u>	<u>25th/75th Percentile</u>
Fall 2008	3,825	24.4	22/27
Fall 2007	3,532	24.3	21/27
Fall 2006	3,864	23.9	21/26
Fall 2005	3,453	24.5	22/27
Fall 2004	3,609	24.2	21/27
Fall 2003	3,385	24.3	22/27
Fall 2002	3,391	23.8	21/26
Fall 2001	2,881	24.1	21/26
Fall 2000	2,755	24.0	21/26
Fall 1999	2,547	24.2	22/27

Note: Some students submit SAT scores rather than ACT scores. These students' scores are not reflected in the table and graph.



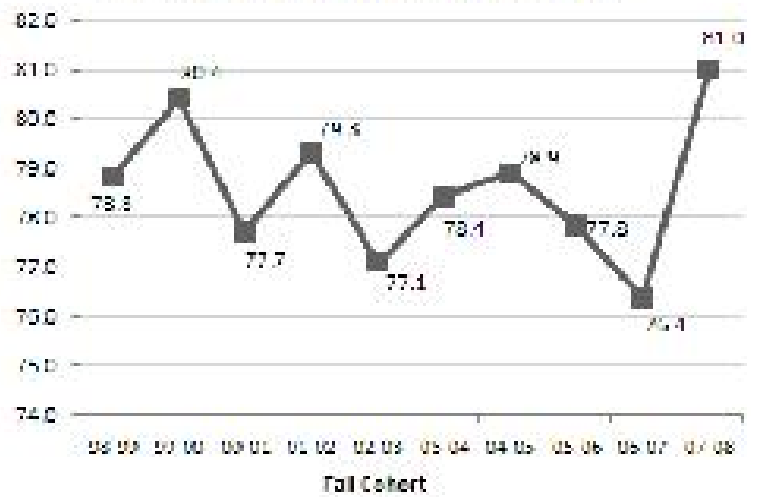
# RETENTION RATE

## First-to-second Year Retention Rate\*

Cohort	Overall	White	Black, Non-Hispanic	Other
2007	81.0	81.2	80.0	79.5
2006	76.4	76.3	76.6	77.7
2005	77.8	78.0	76.1	76.4
2004	78.9	79.6	69.0	80.5
2003	78.4	78.4	72.8	83.1
2002	77.1	77.3	78.0	71.5
2001	79.3	79.3	77.5	81.1
2000	77.7	77.7	77.7	79.7
1999	80.4	80.7	77.2	78.0
1998	78.8	79.0	80.3	71.5

\*Retention rates apply to first-time, full-time, degree-seeking students.

First-to-Second Year Overall Retention Rate



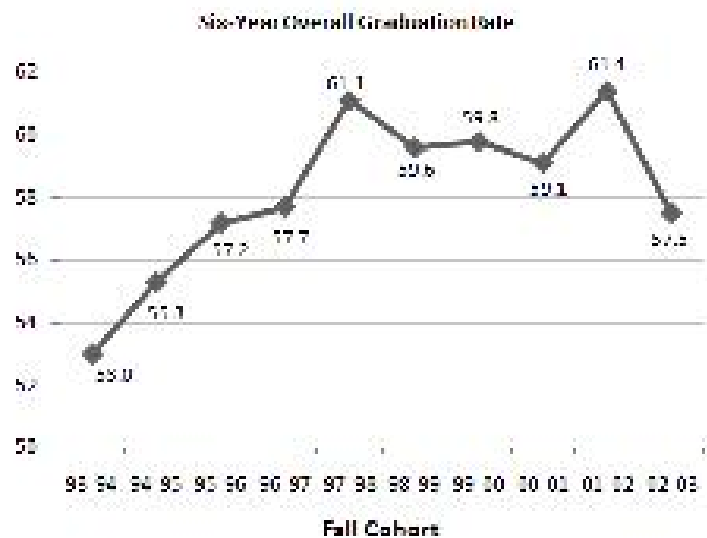
# GRADUATION RATE

## Six-year Graduation Rate\*

Cohort	Overall	White	Black, Non-Hispanic	Other
2002	57.5	58.4	46.9	50.5
2001**	61.4	62.5	50.3	49.6
2000	59.1	60.6	45.0	50.5
1999	59.8	60.8	46.2	57.1
1998	59.6	60.2	49.7	61.4
1997	61.1	62.2	49.0	59.4
1996	57.7	59.1	43.2	53.9
1995	57.2	58.2	38.5	63.2
1994	55.3	57.1	35.4	48.2
1993	53.0	54.8	32.5	52.3

\*Graduation rates apply to first-time, full-time, degree-seeking students; the fall 2002 cohort numbers are preliminary.

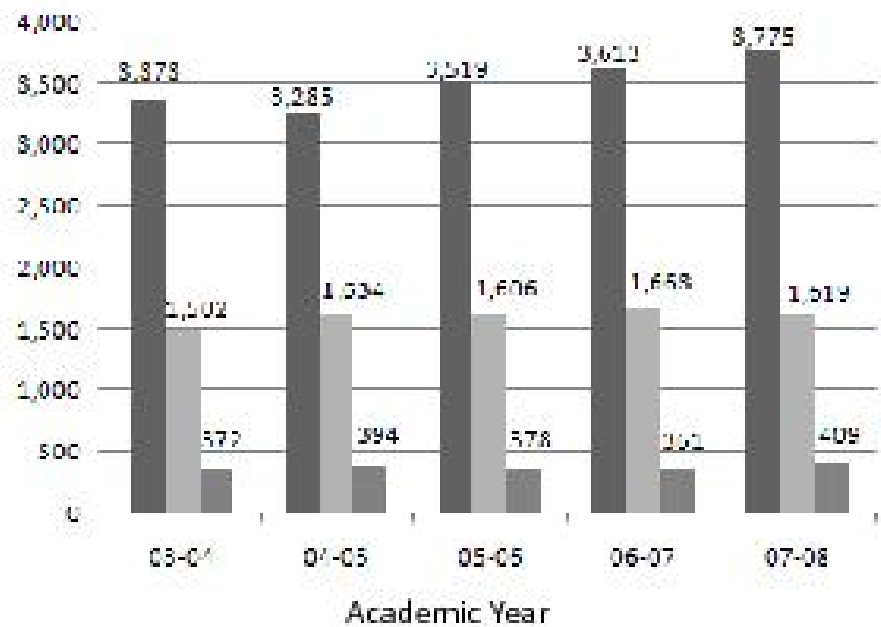
\*\*reflects a correction made after IPEDS submission.



# DEGREES CONFERRED

## 2007-2008

Baccalaureate	3,775
Graduate	1,619
First Professional	409



## DEGREES CONFERRED - By College

**2007-2008**

<b>College</b>	<b>Bacc.</b>	<b>Mast.*</b>	<b>Doc.</b>	<b>First Prof.</b>	<b>College</b>	<b>Bacc.</b>	<b>Mast.*</b>	<b>Doc.</b>	<b>First Prof.</b>
Agriculture	547	58	19	-	Grad. School	-	73	6	-
Arts & Sciences	1,042	128	74	-	Health Sciences	76	137	35	-
Business & Economics	706	166	15	-	Law	-	-	-	161
Comm. & Info. Studies	385	103	3	-	Medicine	-	22	32	94
Dentistry	-	4	-	51	Nursing	111	41	15	-
Design	118	16	-	-	Pharmacy	-	1	6	103
Education	308	222	34	-	Public Health	-	36	14	-
Engineering	296	172	45	-	Social Work	61	98	1	-
Fine Arts	125	34	9	-	<b>Total</b>	<b>3,775</b>	<b>1,311</b>	<b>308</b>	<b>409</b>

\* Includes Specialist degrees

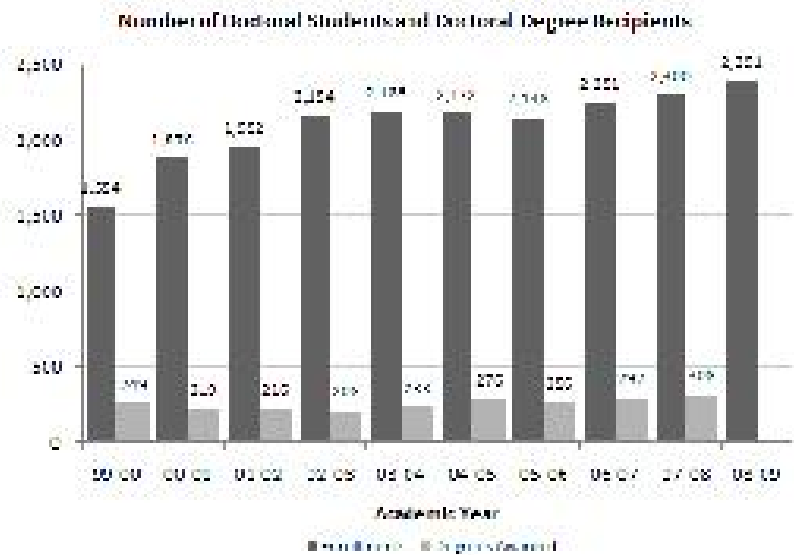


# DOCTORATES - Enrollments and Degrees Awarded

<u>Year</u>	<u>Fall Enrollment</u>	<u>Degrees Awarded</u>
2008-09	2,391	
2007-08	2,300	308
2006-07	2,251	292
2005-06	2,148	256
2004-05	2,172	276
2003-04	2,185	233
2002-03	2,154	208
2001-02	1,952	216
2000-01	1,876	219
1999-00	1,554	249

Note1: Doctoral enrollments are based on the number of students enrolled in doctoral programs during the fall semester of a given academic year.

Note2: The number of doctoral degree recipients for 2008-09 is not yet available.

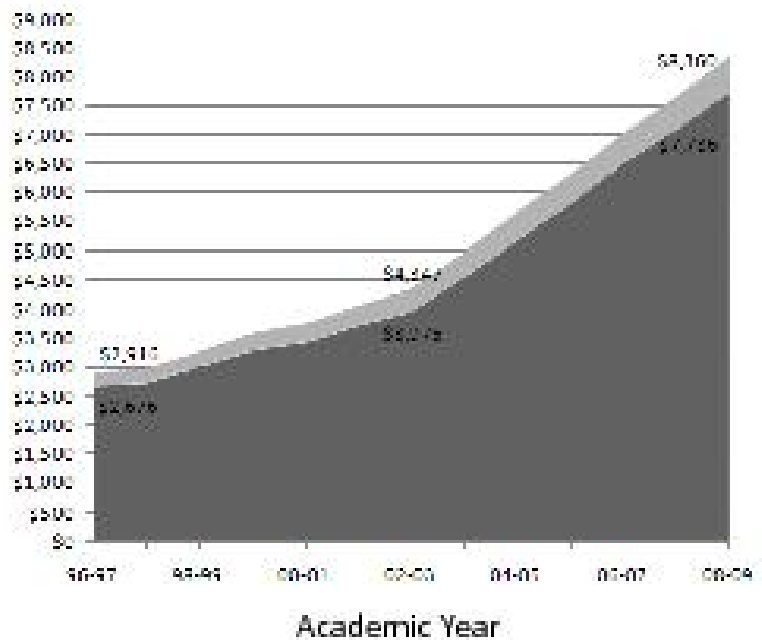


# ANNUAL TUITION and FEES

## 2008-2009

<b>Resident</b>	<b>Tuition</b>	<b>Fees</b>
Graduate	\$ 7,494	\$ 866
Undergraduate		
- Lower Division	6,870	866
- Upper Division	7,094	866
<b>Non-resident</b>	<b>Tuition</b>	<b>Fees</b>
Graduate	\$ 16,362	\$ 866
Undergraduate		
- Lower Division	15,018	866
- Upper Division	15,230	866

Note: Beginning in 2004-05, undergraduates in upper and lower divisions are charged different rates of tuition. The tuition rate in the graph reflects the rate for lower division students.



# FULL-TIME EMPLOYEES

**2007-2008**

Full-Time Employees	President's Office	Provost			Health Affairs	Total	% Total
		Educational Units	Administration/Support	Finance and Administration			
Exec./Admin./Managerial	34	167	98	86	92	477	4.1%
Faculty	0	1,997	0	0	0	1,997	17.0%
Library Faculty	0	60	0	0	0	60	0.5%
Other Professional	183	1,683	518	322	1,018	3,724	31.8%
Secretarial/Clerical	83	1,279	365	206	503	2,436	20.8%
Tech./Paraprofessional	21	849	118	155	288	1,431	12.2%
Skilled Crafts	6	30	6	173	5	220	1.9%
Service/Maintenance	7	206	137	696	327	1,373	11.7%
<b>Total</b>	<b>334</b>	<b>6,271</b>	<b>1,242</b>	<b>1,638</b>	<b>2,233</b>	<b>11,718</b>	<b>100.0%</b>

Note 1: The President's Office includes staff from the Athletics Department.

Note 2: Starting in 2006-07 Library faculty are reported to the federal government in the Other Professional Category. For this publication, Library faculty are classified separately.

# FULL-TIME EMPLOYEE DEMOGRAPHICS

**2007-2008**

<b>Full-time Employees</b>	<b>Black, Non-Hispanic</b>	<b>American Indian/ Alaskan Native</b>	<b>Asian/ Pacific Islander</b>	<b>Hispanic</b>	<b>White</b>	<b>Female</b>	<b>Male</b>
Exec./Admin./Managerial	22	0	8	2	445	234	243
Faculty	71	1	227	29	1,669	664	1,333
Library Faculty	2	0	1	0	57	48	12
Other Professional	148	6	212	19	3,339	2,333	1,391
Secretarial/Clerical	314	1	25	7	2,089	2,167	289
Tech./Paraprofessional	130	1	67	12	1,221	864	567
Skilled Crafts	31	0	3	0	186	4	216
Service/Maintenance	464	2	18	6	883	590	783
<b>Total</b>	<b>1,182</b>	<b>11</b>	<b>561</b>	<b>75</b>	<b>9,889</b>	<b>6,904</b>	<b>4,814</b>

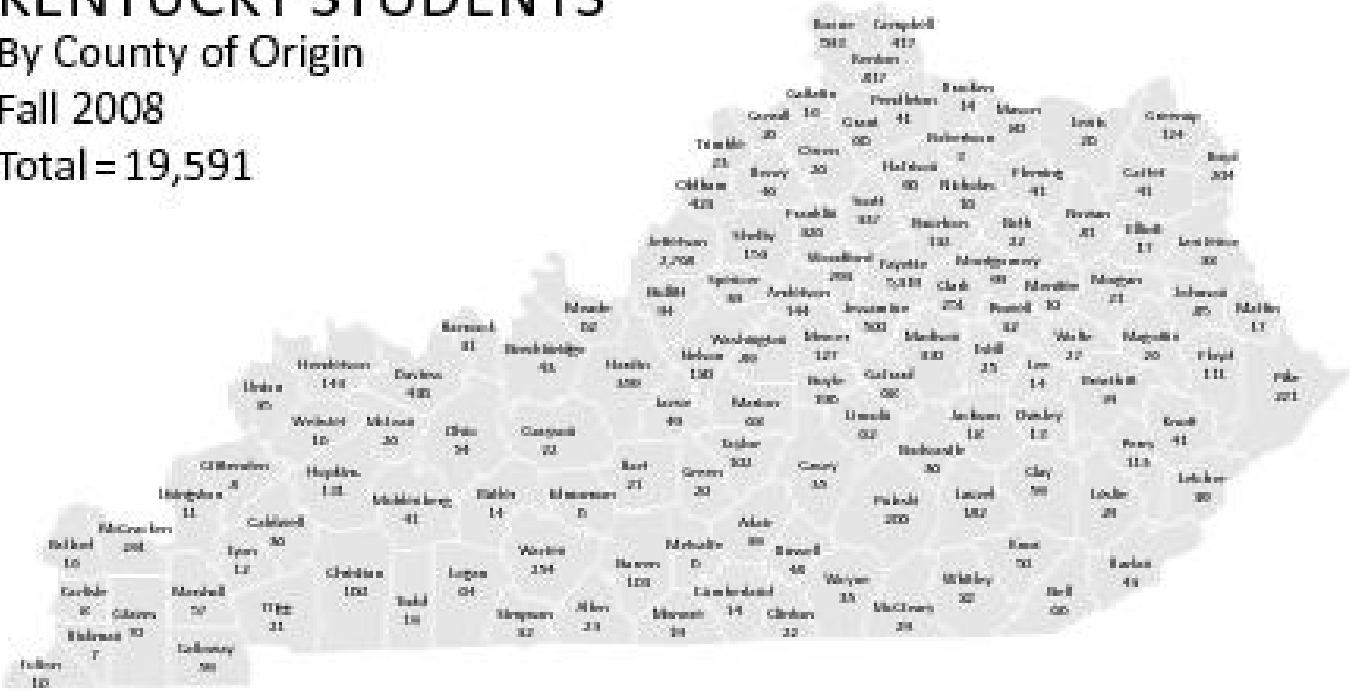


# KENTUCKY STUDENTS

By County of Origin

Fall 2008

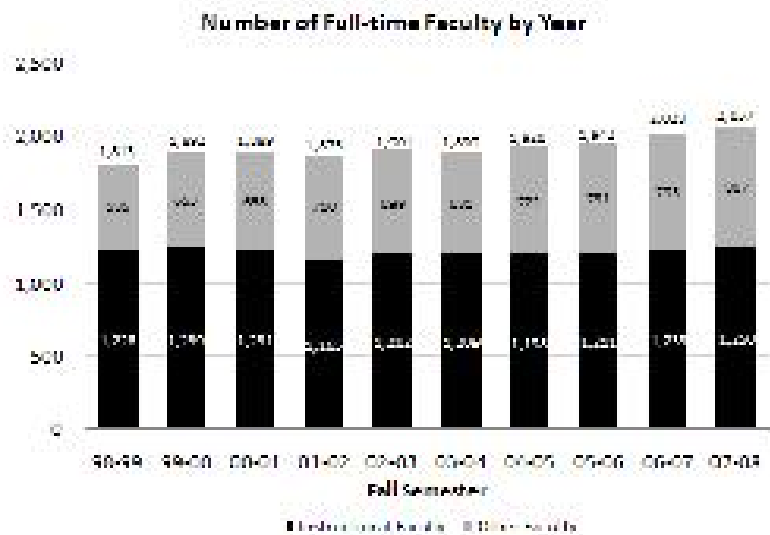
Total = 19,591



## FULL-TIME FACULTY - Historical Trends

	<u>Instructional Faculty</u>	<u>Other Faculty</u>
2007-2008	1,250	807
2006-2007	1,233	795
2005-2006	1,211	731
2004-2005	1,198	722
2003-2004	1,209	681
2002-2003	1,202	699
2001-2002*	1,165	710
2000-2001	1,231	658
1999-2000	1,239	653
1998-1999	1,228	585

Note: Beginning in 2001-2002, changes in the federal definition of 'Instructional Faculty' excluded 'Extension Faculty,' however, Lecturers are now included. 'Other Faculty' now includes those with Extension, Clinical, Research and Library Faculty series designations.



# FACULTY DEMOGRAPHICS

## Tenured and Tenure-track Faculty 2007-2008

Full-time Faculty	Black, Non-Hispanic		American Indian/ Alaskan Native		Asian/ Pac. Islander		Hispanic		White	
	M	F	M	F	M	F	M	F	M	F
Professors/Lib. I	5	5	0	0	52	6	4	1	467	100
Associate Professors/Lib. II	21	11	1	0	30	10	1	3	307	198
Assistant Professors/Lib. III	8	11	0	0	47	24	7	6	169	115
Instructors/Lib. IV	0	0	0	0	0	0	0	0	0	5
<b>Total</b>	<b>34</b>	<b>27</b>	<b>1</b>	<b>0</b>	<b>129</b>	<b>40</b>	<b>12</b>	<b>10</b>	<b>943</b>	<b>418</b>



## FACULTY - By Rank and Title Series: 2007-2008

### Tenured/Tenure-track

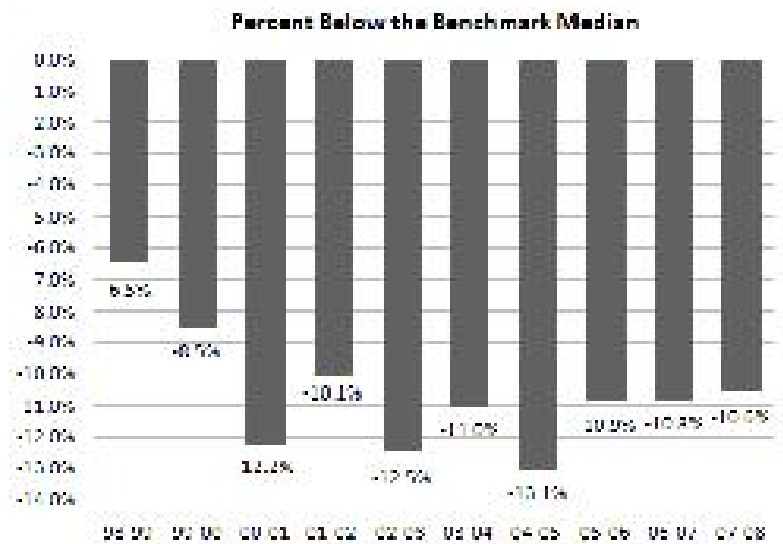
Rank	Regular	Librarian	Extension	Spec. Title	Total
Professors/Lib. I	515	22	41	62	640
Associate Professors/Lib. II	396	29	18	139	582
Assistant Professors/Lib. III	291	4	12	80	387
Instructors/Lib. IV		5			5
<b>Total</b>	<b>1,202</b>	<b>60</b>	<b>71</b>	<b>281</b>	<b>1,614</b>

### Non-tenure Track

Rank	Clinical	Research	Lecturer	Other	Total
Professors	17	6		5	28
Associate Professors	45	10			55
Assistant Professors	136	70		10	216
Instructors	20			19	39
Senior Lecturers			14		14
Lecturers			91		91
<b>Total</b>	<b>218</b>	<b>86</b>	<b>105</b>	<b>34</b>	<b>443</b>

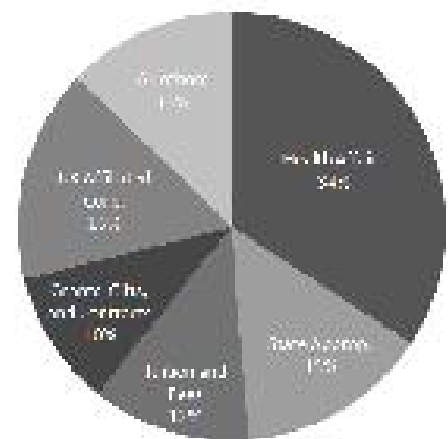
# FACULTY SALARIES

Fall	All-ranks Average Salary	Benchmark Median Salary
2007	\$ 79,350	\$ 88,787
2006	76,065	85,300
2005	73,685	82,664
2004	71,026	81,713
2003	69,911	78,594
2002	66,953	76,547
2001	66,713	74,184
2000	64,842	73,892
1999	62,314	68,138
1998	60,714	64,954



## REVENUE (In Millions)

Source of Funds	Revised Budget 2007-08	Budget 2008-09
State Appropriation	\$337.0	\$321.5
Tuition and Fees	254.5	265.3
County Appropriation	14.4	15.2
Endowment and Investment Income	33.3	34.9
Federal Governmental Appropriations	15.9	16.6
Gifts, Grants, and Contracts	201.7	227.8
Sales and Services of Educational Activities	82.0	85.8
Transfers	45.7	49.8
Fund Balances	87.4	81.2
Affiliated Corporations	336.1	353.5
Hospital	683.1	753.2
<b>Total</b>	<b>\$2,091.1</b>	<b>\$2,204.8</b>



2008-2009 Budget

## EXPENDITURES (In Millions)

Program	Revised Budget	Budget
	2007-08	2008-09
Instruction	\$ 335.4	\$ 318.4
Research	263.7	279.9
Public Service	254.5	284.8
Libraries	24.3	25.0
Academic Support	86.1	87.7
Student Services	28.4	28.0
Institutional Support	113.6	109.7
Operations and Maintenance	59.4	60.6
Student Financial Aid	88.1	93.6
Auxiliary Enterprises		
Operations	119.5	126.0
Mandatory Transfers	36.7	45.1
Hospital	681.4	746.0
<b>Total</b>	<b>\$ 2,091.1</b>	<b>\$ 2,204.8</b>

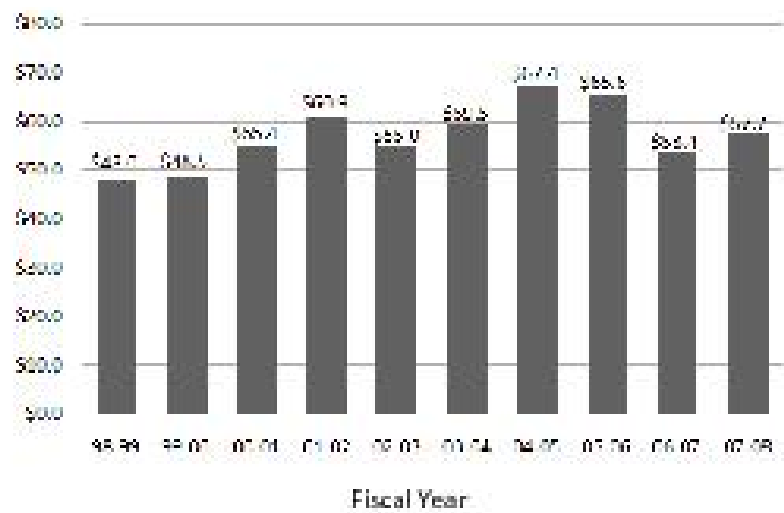
Category	Revised Budget	Budget
	2007-08	2008-09
Personnel Services	\$ 1,027.2	\$ 1,073.8
Operating Expenses	973.9	1,037.8
Capital Outlay	53.3	48.1
Mandatory Transfers	36.7	45.1
<b>Total</b>	<b>\$ 2,091.1</b>	<b>\$ 2,204.8</b>

## PRIVATE GIVING (In Millions)

### Fiscal Year 2007-2008

Alumni	\$ 14.9
Non-alumni	11.1
Corporations	13.5
Foundations	9.9
Trusts/Associations	8.3
<b>Total</b>	<b>\$ 57.7</b>

Note: With the transfer of LCC to the KCPS in 2003-04 FY, gifts to LCC stopped being reflected in UK's Private Giving statistics.



## GRANT and CONTRACT AWARDS (In Millions)

**2007-2008**

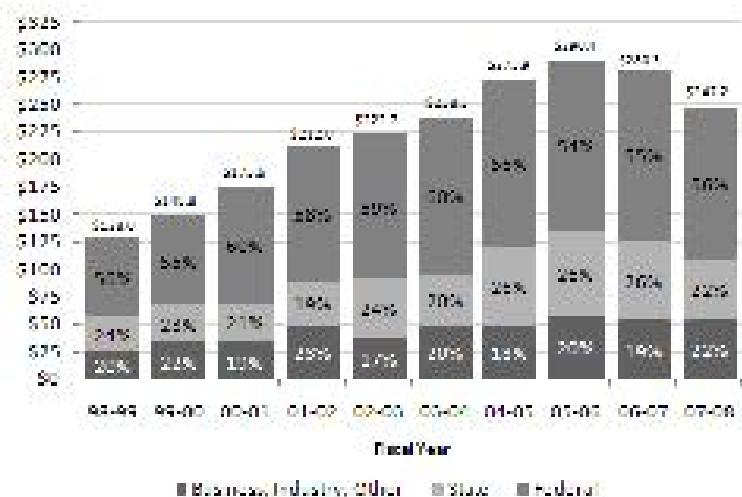
### By Category of Support

Instruction	\$ 14.3
Research	189.3
Public Service	41.1
Other	2.5
<b>Total</b>	<b>\$ 247.2</b>

### By Source

Federal	56%
State	22%
Business, Industry, Other	22%

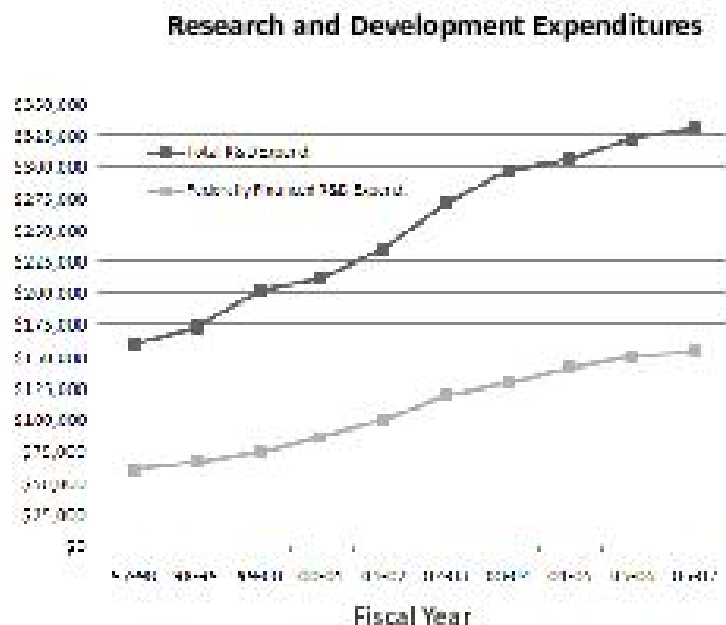
Note: With the transfer of LCC to the KCTCS in 2003-04 FY, awards to LCC stopped being reflected in UK's Grant and Contract Awards statistics.



## RESEARCH and DEVELOPMENT (In Thousands)

Fiscal Year	Total R&D Expenditures*	Federally Financed R&D Expenditures*
2007	\$ 331,606	\$ 154,688
2006	323,958	151,238
2005	306,653	142,794
2004	297,610	129,887
2003	272,062	120,003
2002	236,275	100,426
2001	211,721	86,239
2000	202,392	73,858
1999	174,034	66,184
1998	161,346	60,760

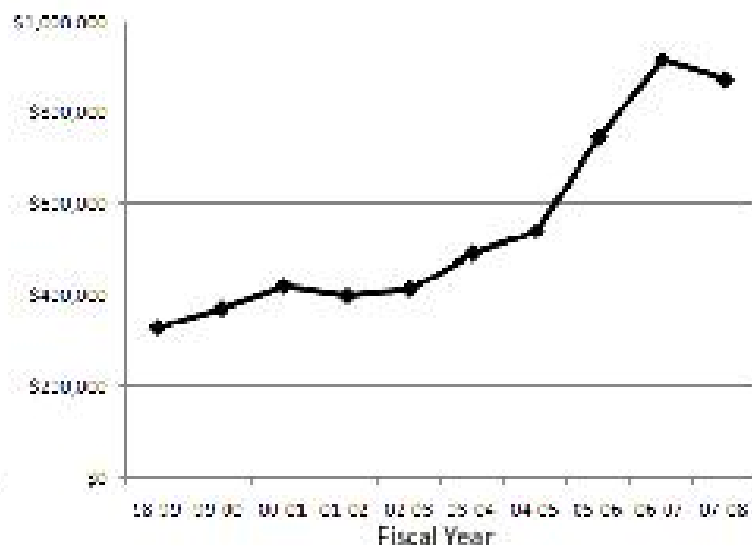
\*As reported to the National Science Foundation for science and engineering disciplines.



# UNIVERSITY ENDOWMENT (In Thousands)

Market Value of University Endowment

<u>Fiscal Year</u>	<u>Market Value</u>
2008	\$ 871,861
2007	916,590
2006	746,114
2005	538,384
2004	491,098
2003	414,328
2002	399,030
2001	420,838
2000	371,373
1999	329,543



Note: In 2006, the Chandler Medical Center University Hospital Quasi-Endowment Fund for \$150 million was established, accounting for the large increase over the 2005 total.



## NEW and RENOVATED FACILITIES

<b><u>In Construction/Renovation</u></b>	<b><u>Scope</u></b>	<b><u>Funding Source</u></b>	<b><u>Anticipated On-line Date</u></b>
Patient Care Facility	\$700,000,000	Agency	Winter 2010
Biological Pharmaceutical Complex Building	135,292,000	State/Agency	Winter 2009
Livestock Disease Diagnostic Lab Expansion and Upgrade	28,500,000	State	Summer 2010
Cancer Center Radiologic Facility - Hospital Upgrade	6,000,000	Agency	Summer 2009
Center for Applied Energy Research Expansion/Renovation	3,712,581	Federal/State/Agency	Summer 2009
Kentucky Clinic - Outpatient Clinic Expansion/Renovation	3,275,000	Agency	Spring 2009
Schmidt Vocal Arts Center Renovation	2,371,000	Private/Agency	Fall 2009

### **In Planning and Design**

Gatton Building Complex	\$100,000,000	State/Private	Fall 2013
Law School Building	83,300,000	State/Private	Fall 2014
Digital Village Building # 2	20,000,000	Agency/Private	Winter 2010
Convert Hunt Morgan Space to Class Lab	3,200,000	Agency	Fall 2009
Expand Ophthalmology Clinic - Hospital	2,930,000	Agency	Winter 2009
Wildcat Lodge Renovation	1,500,000	Private	Fall 2009

# LAND and SPACE\*

2007-2008

	Main Campus	Off Campus**	Total
Acreage***	795	24,203	24,998
Assigned Square Footage in Buildings***			
Classroom	241,966	30,700	272,666
Laboratory	1,197,101	159,923	1,357,024
Office	1,686,083	933,754	2,619,837
Study	410,443	5,678	416,121
Special	738,107	594,511	1,332,618
General	694,726	95,253	789,979
Support	2,151,373	327,487	2,478,860
Health Care	465,582	58,502	524,084
Residential	1,269,667	185,040	1,454,707
Unclassified	63,363	147,261	210,624
<b>Total</b>	<b>8,918,411</b>	<b>2,538,109</b>	<b>11,456,520</b>

\* Excludes space provided at no cost; includes leased space

\*\* Includes research farms, Robinson Forest, substations, 4-H Camps, and Adena Park

\*\*\* Source: Fall 2007 Physical Facilities and Land Inventory

# GENERAL EQUIPMENT INVENTORIES

(In Millions)

	Inventory 6/30/07	Inventory 6/30/08
<b>General</b>		
Instruction	\$ 26.7	\$29.4
Research	131.0	140.4
Public Service	18.3	18.9
Academic Support	18.9	21.4
Student Services	2.4	2.5
Institutional Support	21.6	22.4
Op & Mgt of Plant	3.0	3.4
Multifunction	6.9	10.6
<b>Subtotal</b>	<b>\$ 228.9</b>	<b>\$248.9</b>
<b>Auxiliaries</b>	<b>17.1</b>	<b>19.1</b>
<b>Hospital</b>	<b>131.7</b>	<b>142.6</b>
<b>Other</b>	<b>51.7</b>	<b>38.8</b>
<b>Total</b>	<b>\$ 429.3</b>	<b>\$451.5</b>

Note 1: Some numbers do not total properly due to rounding.

Note 2: When the 2007-08 Fact Book was printed, the annual inventory for fiscal year 6/30/07 (FY 07) had not been completed. Equipment classified as "unassigned" was therefore excluded from the totals for both FY 08 and FY 07 to allow for an appropriate comparison (p. 14). Because the inventory was completed in January 2008, the totals above include "unassigned" equipment.

## LIBRARY COLLECTIONS\*

	<u>2004-2005</u>	<u>2005-2006</u>	<u>2006-2007</u>
Volumes Held	3,286,731	3,406,377	3,537,710
Current Periodical Titles	30,250**	31,897	44,610***
Microforms	6,347,361	6,388,872	6,433,748
Audio-visual Materials	88,631	90,795	92,600

The Libraries' collections also include access to approximately 400 licensed networked electronic databases, nearly 35,000 electronic journals and a large collection of electronic books accessible in the University's 13 libraries and also available to faculty and students off campus via a proxy server. In addition, the collections include: 260,702 maps; over 200 current state, national and international newspapers; over 6,500 Oral History program interviews on the history and culture of Kentucky; the University Archives and Records Program; the Wendell H. Ford Public Policy Research Center; the Audio-Visual Archives; the Bert T. Combs Appalachian Collection; the Public Policy Archives; the Rare Book Collection which includes the W. Hugh Peal Collection of 19th century English and related literature; and the Preservation Reformatting Center. The Center for Digital Programs creates digital content for the Kentuckiana Digital Library including electronic texts, digitized photographs, images and archival finding aids. The Library is a regional depository for U.S. government publications and also a depository for European Union publications, British Parliamentary Papers, Canadian, Kentucky government publications, and technical reports from federal agencies are all selectively collected.



\*Note1: The Association of Research Libraries (ARL) is in the process of revising the way library materials are counted so totals for 2007-08 are not available.

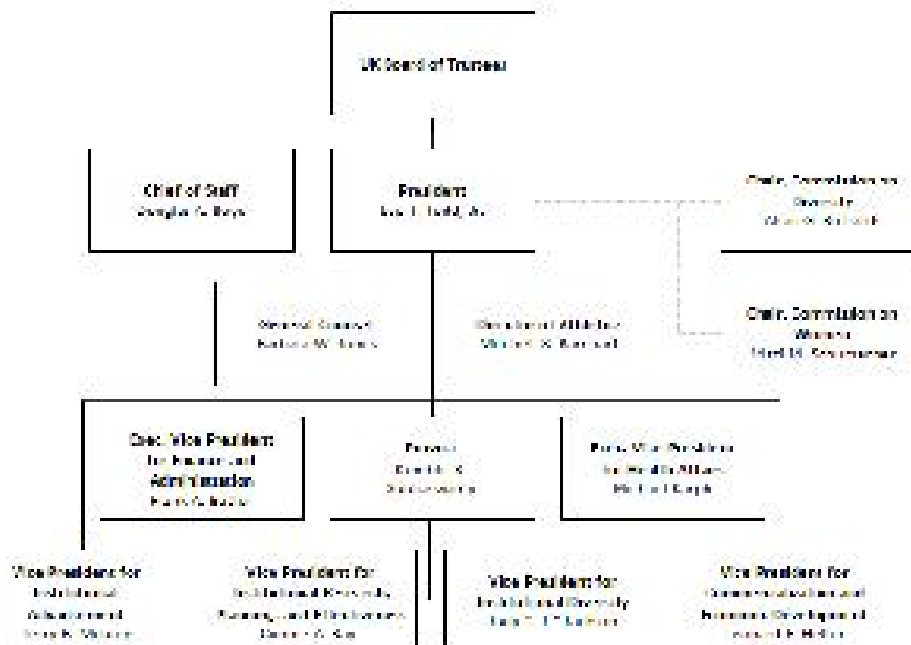
\*\*Note2: The 2004-2005 Periodicals number was revised following the prior publication of this information.

\*\*\*Note3: ARL changed the way that periodicals are counted.

## BENCHMARK INSTITUTIONS

Michigan State University	University of Illinois - Urbana-Champaign
North Carolina State University	University of Iowa
Ohio State University	University of Maryland - College Park
Pennsylvania State University	University of Michigan - Ann Arbor
Purdue University	University of Minnesota - Twin Cities
Texas A&M University	University of North Carolina - Chapel Hill
University of Arizona	University of Virginia
University of California - Los Angeles	University of Washington
University of Florida	University of Wisconsin - Madison
University of Georgia	

# ADMINISTRATIVE ORGANIZATION



## BOARD of TRUSTEES

<b>Mira S. Ball</b>	Lexington	(2010)	<b>Billy Joe Miles</b>	Owensboro	(2013)
<b>Stephen P. Branscum</b>	Russell Springs	(2010)	<b>Tyler Montell</b>	Student Member	(2009)
<b>Edward Britt Brockman</b>	Louisville	(2014)	<b>Sandy Patterson</b>	Alumni Member	(2012)
<b>Penelope Brown</b>	Corbin	(2011)	<b>Phillip R. Patton</b>	Glasgow	(2009)
<b>Jo Herr Curris</b>	Alumni Member	(2014)	<b>Erwin Roberts</b>	Louisville	(2012)
<b>Dermontti Dawson</b>	Nicholasville	(2011)	<b>Charles R. Sachatello</b>	Lexington	(2013)
<b>Ann Brand Haney</b>	Alumni Member	(2010)	<b>C. Frank Shoop</b>	Lexington	(2014)
<b>James F. Hardyman</b>	Lexington	(2009)	<b>JoEtta Y. Wickliffe</b>	Harrodsburg	(2009)
<b>Pamela R. May</b>	Pikeville	(2013)	<b>Russ Williams</b>	Staff Member	(2010)
<b>Everett McCorvey</b>	Faculty Member	(2011)	<b>Ernest Yarnarella</b>	Faculty Member	(2010)

# ADMINISTRATIVE HISTORY

- 1865** Agricultural and Mechanical College (A&M) established as part of Kentucky University
- 1869** James K. Polkton became President of A&M
- 1878** A&M separated from Kentucky University
- 1882** A&M moved to current location in Lexington
- 1885** Ag. Experiment Station opened
- 1889** College of Agriculture established
- 1908** College of Arts and Sciences and College of Law established; A&M name changed to "State University, Lexington, Kentucky"
- 1909** University Library established
- 1911** Henry S. Barker became President of State University
- 1916** State University renamed University of Kentucky
- 1917** Frank L. McVey became President of UK; Graduate School established
- 1918** College of Engineering established
- 1923** College of Education established
- 1925** College of Business and Economics established
- 1941** Herman L. Danavon became President
- 1947** College of Pharmacy moved to UK
- 1956** Frank G. Dickey became President
- 1957** Ashland Extension Center established
- 1960** Medical Center established; College of Medicine admitted first class; College of Nursing admitted first class; Henderson Extension Center and Southeast Extension Center established
- 1962** College of Dentistry admitted first class; University Hospital opened
- 1963** John W. Oswald became President
- 1964** Community College System established under UK; College of Architecture established
- 1965** Lexington Technical Institute (LTI) established
- 1966** College of Allied Health Professions established
- 1967** College of Home Economics established
- 1968** Albert D. Kirwan became President
- 1969** College of Social Work established; Otis A. Singletary became President
- 1970** College of Library and Information Science established
- 1976** College of Communications and College of Fine Arts established
- 1982** University reorganized with a Central Administration and three sectors headed by Chancellors (Lexington Campus, Medical Center, and Community College System)
- 1984** LTI became Lexington Community College
- 1987** David P. Roselle became President
- 1990** Charles T. Withington, Jr. became President
- 1993** College of Communications and Information Studies established
- 1998** William T. Young Library opened; All Community Colleges (except LOC) transferred to the KCTCS
- 2001** Lee T. Todd, Jr. became President; University reorganized with a Provost model
- 2002** College of Design established
- 2004** LOC transferred to the KCTCS; College of Public Health established



# VALUES

The values of the University guide its decisions and the behavior of its community. Its core values are:

- *Integrity*
- *Academic excellence and academic freedom*
- *Mutual respect and human dignity*
- *Embracing diversity*
- *Personal and institutional responsibility and accountability*
- *Shared governance*
- *A sense of community*
- *Sensitivity to work-life concerns*
- *Civic responsibility*
- *Service to society*

-- Adopted by the Board of Trustees, October 10, 2006

see success  
see ambition  
see leadership  
see innovation  
see opportunity  
see now  
see tomorrow  
see forever  
see blue.



**UK**  
UNIVERSITY OF  
KENTUCKY

An Equal Opportunity University

Published by the UK Office of  
Institutional Research