

Winston A. Thompson

GUIDE BOOK

of the

New Central High School

12th and Chestnut Streets

LOUISVILLE 3, KENTUCKY

Showing floor plans of first, second, and third floors

SEPTEMBER, 1952

ATWOOD S. WILSON
Principal

MAUDE B. PORTER
Assistant Principal

W. F. COSLOW
Supervisor of Secondary Education

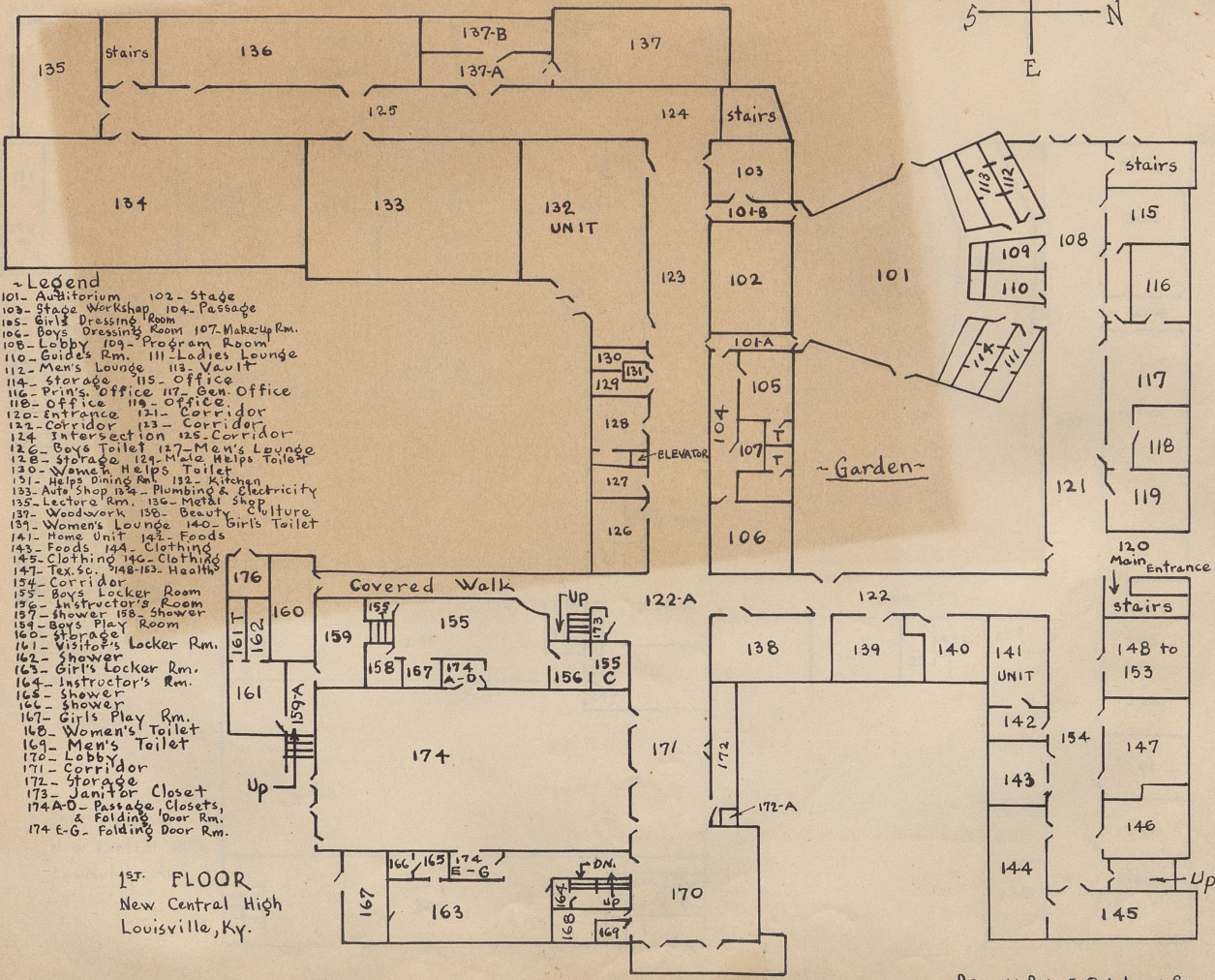
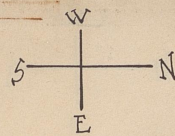
OMER CARMICHAEL
Superintendent

R. E. DAUGHERTY
Supervisor of Instructional Supplies

MONROE MELTON
Supervisor of Maintenance and Operation

Winston A. Thompson
Supervisor of Students

12th ST.



Magazine St.

CHESTNUT ST.

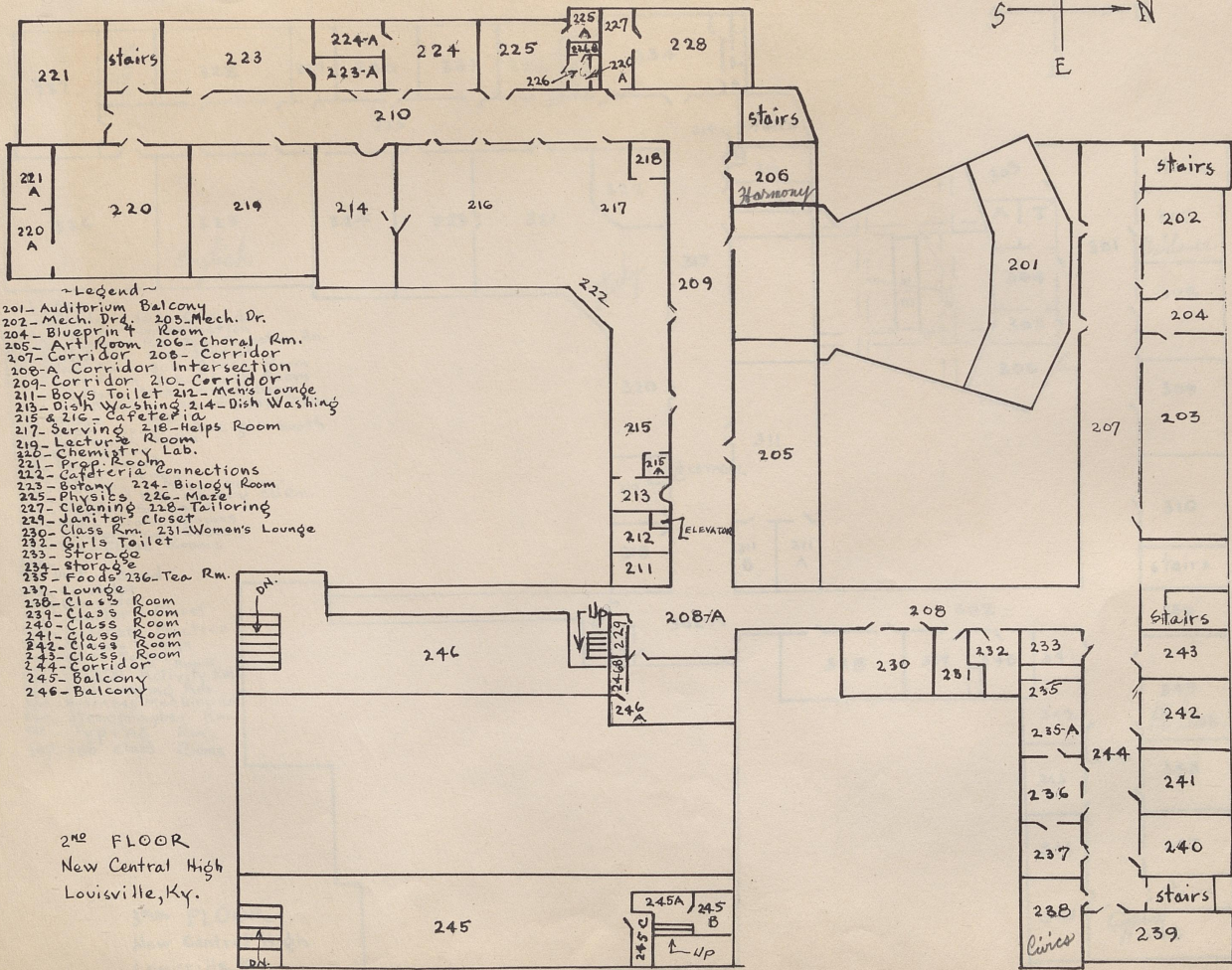
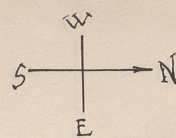
1ST FLOOR
New Central High
Louisville, Ky.

11th ST.

DRAWN BY E.Q. Adams, Sr.

- Legend
- 101- Auditorium 102- Stage
 - 103- Stage Workshop 104- Passage
 - 105- Girls Dressing Room
 - 106- Boys Dressing Room 107- Make-up Rm.
 - 108- Lobby 109- Program Room
 - 110- Guides Rm. 111- Ladies Lounge
 - 112- Men's Lounge 113- Vault
 - 114- Storage 115- Office
 - 116- Prin's. Office 117- Gen. Office
 - 118- Office 119- Office
 - 120- Entrance 121- Corridor
 - 122- Corridor 123- Corridor
 - 124- Intersect 101 125- Corridor
 - 126- Boys Toilet 127- Men's Lounge
 - 128- Storage 129- Male Helps Toilet
 - 130- Women Helps Toilet
 - 131- Helps Dining Rm. 132- Kitchen
 - 133- Auto Shop 134- Plumbing & Electricity
 - 135- Lectora Rm. 136- Metal shop
 - 137- Woodwork 138- Beauty Culture
 - 139- Women's Lounge 140- Girls Toilet
 - 141- Home Unit 142- Foods
 - 143- Foods 144- Clothing
 - 145- Clothing 146- Clothing
 - 147- Tex. sc. 148-163- Health
 - 154- Corridor
 - 155- Boys Locker Room
 - 156- Instructor's Room
 - 157- Shower 158- Shower
 - 159- Boys Play Room
 - 160- Storage
 - 161- Visitor's Locker Rm.
 - 162- Shower
 - 163- Girls Locker Rm.
 - 164- Instructor's Rm.
 - 165- Shower
 - 166- Shower
 - 167- Girls Play Rm.
 - 168- Women's Toilet
 - 169- Men's Toilet
 - 170- Lobby
 - 171- Corridor
 - 172- Storage
 - 173- Janitor Closet
 - 174 A-D- Passage Closets, & Folding Door Rm.
 - 174 E-G- Folding Door Rm.

12th ST.



~Legend~

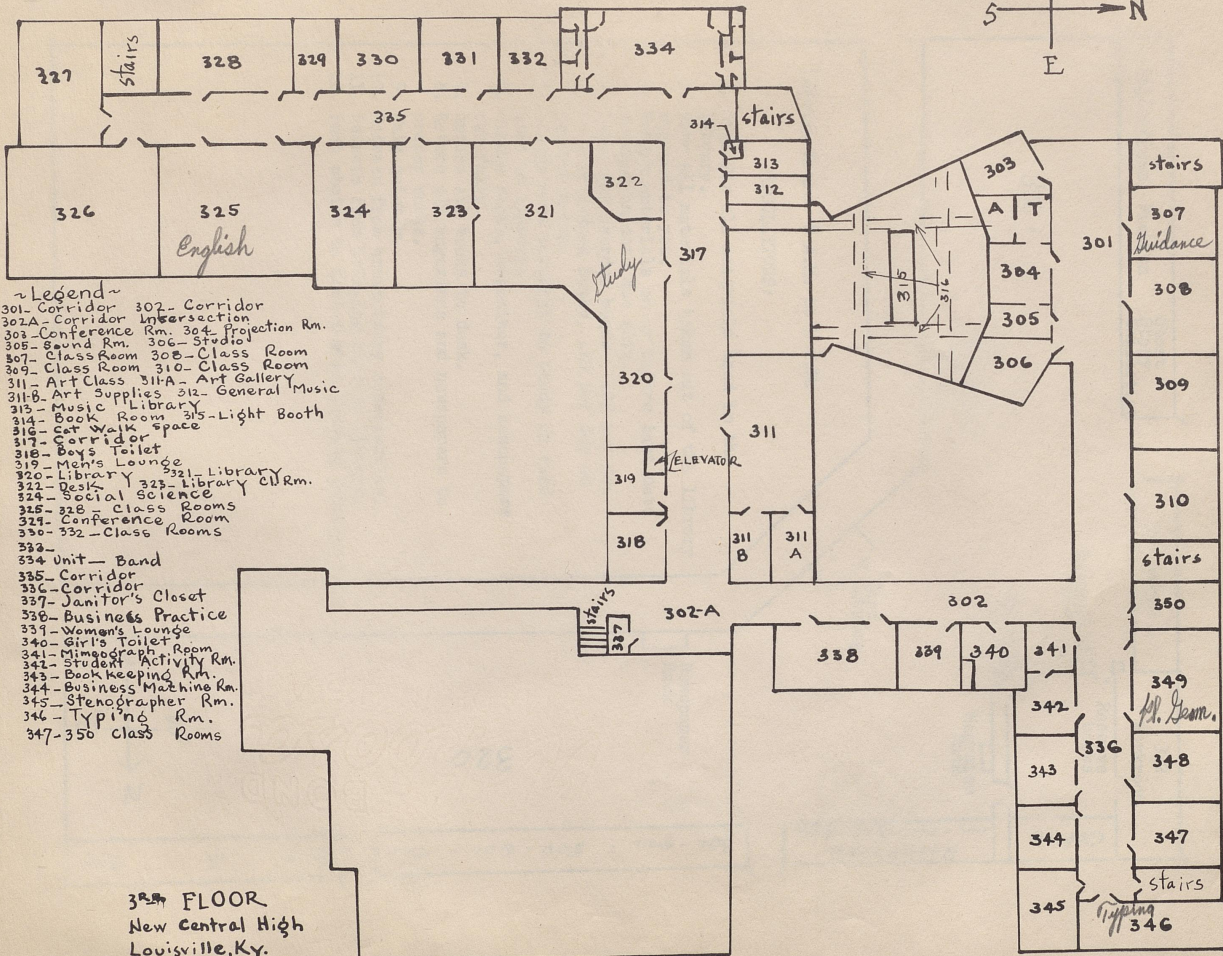
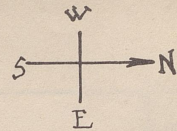
- 201 - Auditorium Balcony
- 202 - Mech. Dr. 205 - Mech. Dr.
- 204 - Blueprint Room
- 205 - Art Room 206 - Choral Rm.
- 207 - Corridor 208 - Corridor
- 208-A Corridor Intersection
- 209 - Corridor 210 - Corridor
- 211 - Boys Toilet 212 - Mens Lounge
- 213 - Dish Washing 214 - Dish Washing
- 215 & 216 - Cafeteria
- 217 - Serving 218 - Help's Room
- 219 - Lecture Room
- 220 - Chemistry Lab.
- 221 - Prep. Room
- 222 - Cafeteria Connections
- 223 - Botany 224 - Biology Room
- 225 - Physics 226 - Maze
- 227 - Cleaning 228 - Tailoring
- 229 - Janitor's Closet
- 230 - Class Rm. 231 - Women's Lounge
- 232 - Girls Toilet
- 233 - Storage
- 234 - Storage
- 235 - Foods 236 - Tea Rm.
- 237 - Lounge
- 238 - Class Room
- 239 - Class Room
- 240 - Class Room
- 241 - Class Room
- 242 - Class Room
- 243 - Class Room
- 244 - Corridor
- 245 - Balcony
- 246 - Balcony

2nd FLOOR
New Central High
Louisville, Ky.

11th ST.

DRAWN BY E.G. Adams, Sr.

12th ST.



~ Legend ~

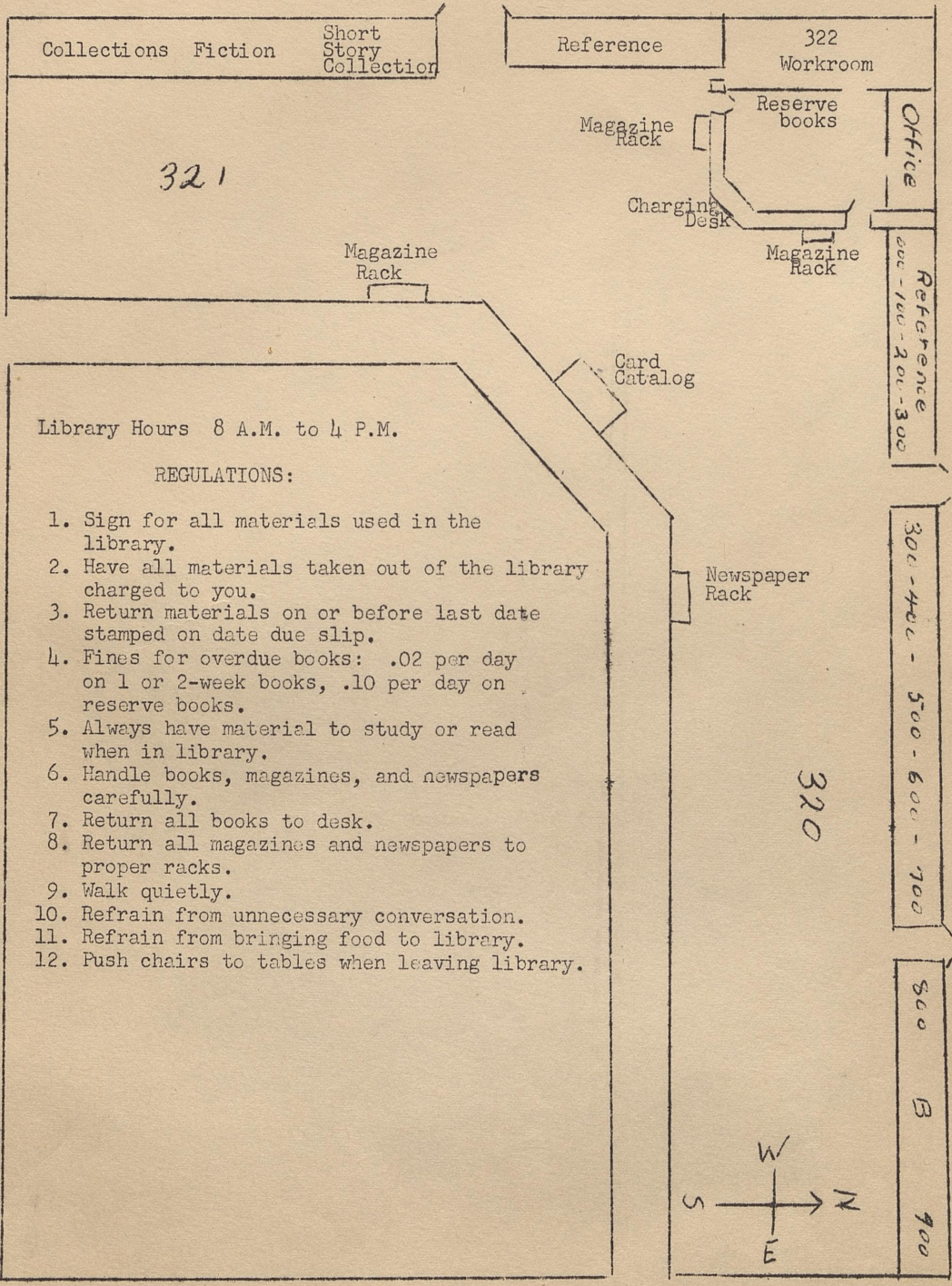
- 301 - Corridor
- 302 - Corridor
- 302A - Corridor Intersection
- 303 - Conference Rm. 304 - Projection Rm.
- 305 - Band Rm. 306 - Studio
- 307 - Class Room 308 - Class Room
- 309 - Class Room 310 - Class Room
- 311 - Art Class 311A - Art Gallery
- 311B - Art Supplies 312 - General Music
- 313 - Music Library
- 314 - Book Room 315 - Light Booth
- 316 - Cat Walk space
- 317 - Corridor
- 318 - Boys Toilet
- 319 - Men's Lounge
- 320 - Library 321 - Library
- 322 - Desk 323 - Library CTRm.
- 324 - Social Science
- 325 - 328 - Class Rooms
- 329 - Conference Room
- 330 - 332 - Class Rooms
- 333 -
- 334 - Unit - Band
- 335 - Corridor
- 336 - Corridor
- 337 - Janitor's Closet
- 338 - Business Practice
- 339 - Women's Lounge
- 340 - Girl's Toilet
- 341 - Mimeograph Rm.
- 342 - Student Activity Rm.
- 343 - Bookkeeping Rm.
- 344 - Business Machine Rm.
- 345 - Stenographer Rm.
- 346 - Typing Rm.
- 347 - 350 - Class Rooms

3rd FLOOR
New Central High
Louisville, Ky.

11th ST.

Drawn By E.Q. Adams, Sr.

CENTRAL HIGH SCHOOL LIBRARY



Library Hours 8 A.M. to 4 P.M.

REGULATIONS:

1. Sign for all materials used in the library.
2. Have all materials taken out of the library charged to you.
3. Return materials on or before last date stamped on date due slip.
4. Fines for overdue books: .02 per day on 1 or 2-week books, .10 per day on reserve books.
5. Always have material to study or read when in library.
6. Handle books, magazines, and newspapers carefully.
7. Return all books to desk.
8. Return all magazines and newspapers to proper racks.
9. Walk quietly.
10. Refrain from unnecessary conversation.
11. Refrain from bringing food to library.
12. Push chairs to tables when leaving library.

