

**KEY**

- 3 FINE MAIL OR AB. ROOF
- 12
- FRAME PARTITION
- OPENING WITH SHUTTERS
- WINDOWS - SHUTTERS
- STABLE
- WINDOW IN 1<sup>ST</sup> STORY
- 17 & 3<sup>RD</sup>
- 2 1/4 & 4<sup>TH</sup>
- SIDES COLORED YELLOW ARE FRAME
- RED - BRICK
- BLUE - STONE
- GREEN - CONCRETE
- BROWN - FIRE ROOF
- SPECIALS
- MARKED TO THE LEFT LINES
- (S) INDICATE RELATIVE HEIGHTS
- ARBITRARY
- BROKEN LINE NEAR ELDG - ROOFGORGE
- SOLID - METAL

**PUBLIC SQUARE.**  
50

Library of Congress  
Two Copies Received  
Copyright Copy  
FIRST COPY,  
2nd Copy Delivered to  
Congress Oct 18 1900

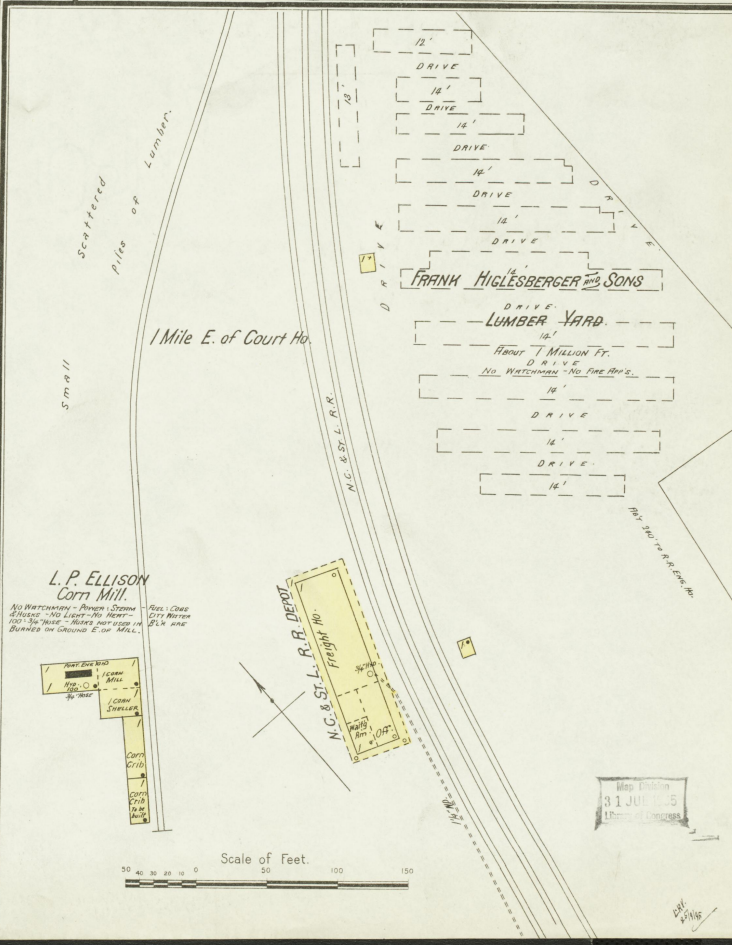
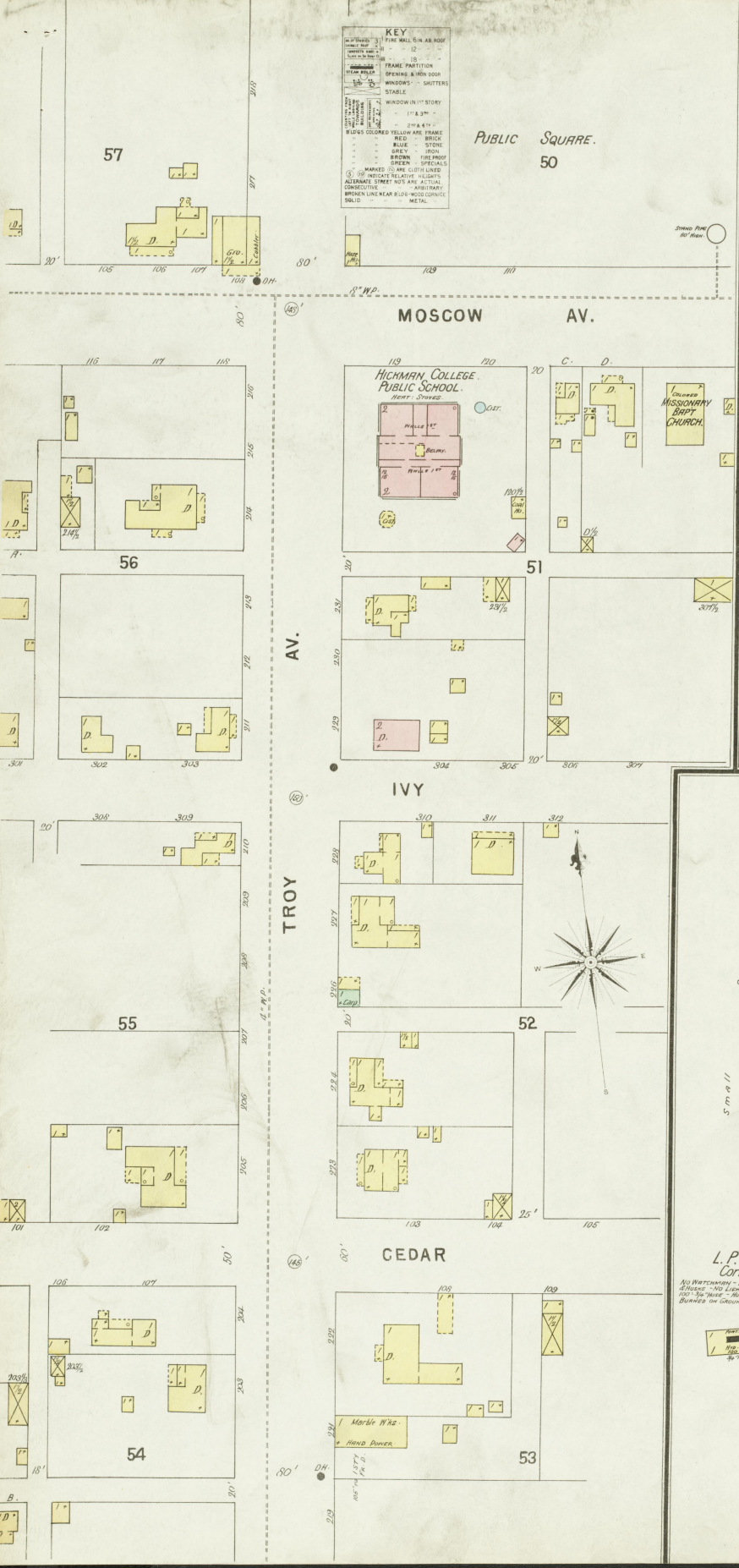
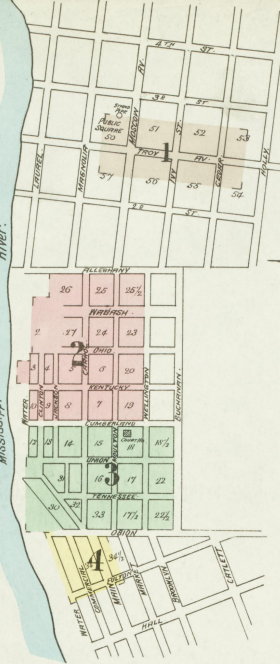
**SANBORN - PERRIS MAP CO. LIMITED**  
NEW YORK  
Population 12,700  
17 1/2 S. Broadway  
McSteam & McHam Engines  
Independent Hose Carts  
Water Facilities - See Note.  
Prevailing Winds - N.  
**HICKMAN, KY.**  
FULTON CO.  
SEP 1896.  
SCALE 50 FT. TO AN INCH.  
Copyright 1895 by THE SANBORN-PERRIS MAP COMPANY

**NOTE**  
WATER WKS. - Gravity on Direct Press System - 3000 Gall. Storage Tank  
342 1/2 Gall. Storage Tank  
BURNING - NO LIGHT - NO HEAT - 100' S. of House - 25' S. of House  
STEEL RAIL ROAD TRACKS are LOCATED AT Avenue Station  
FIRE DEPT. 1 - 8 - Volunteer Co. Avenue rd. 25' N. of Ave. - 4. 2 Water  
Hose Carts - 100' - 25' (Double Jacket) Cotton Hose.



**INDEX.**

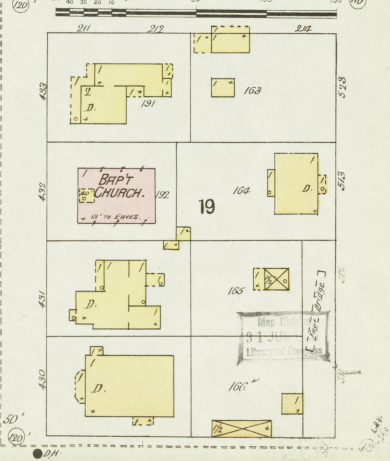
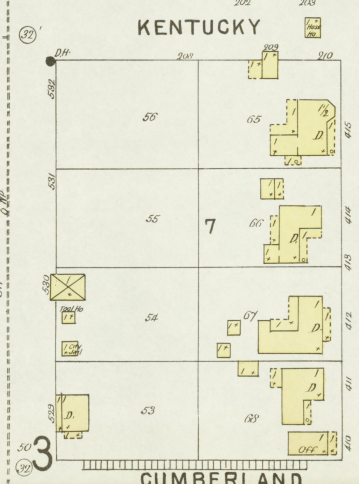
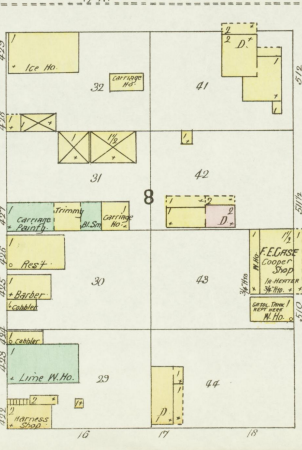
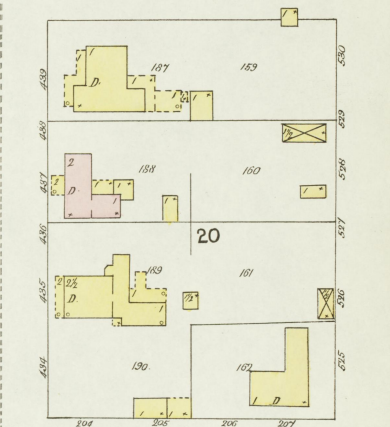
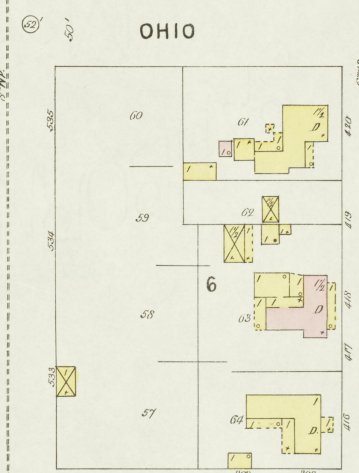
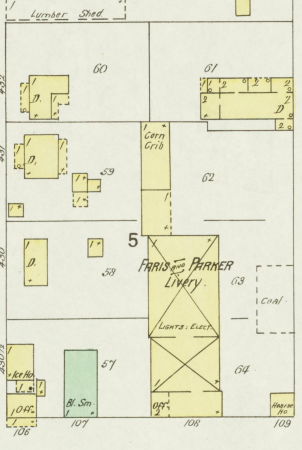
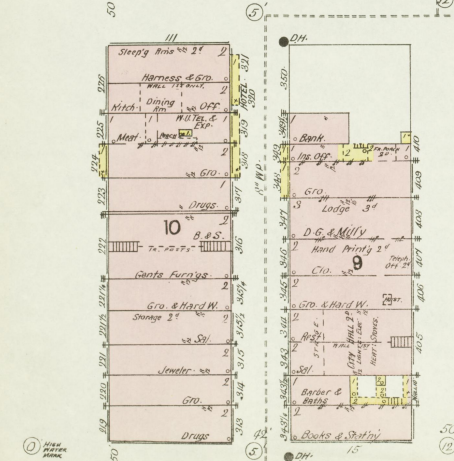
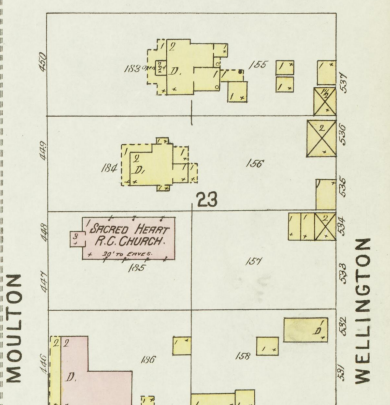
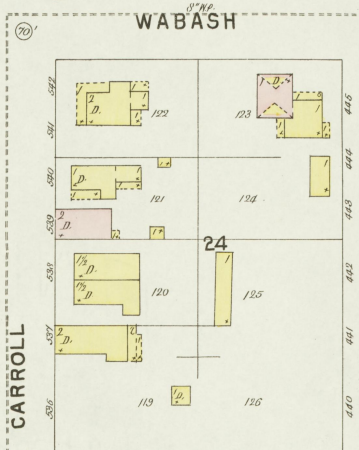
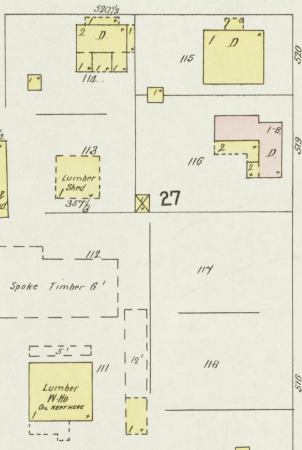
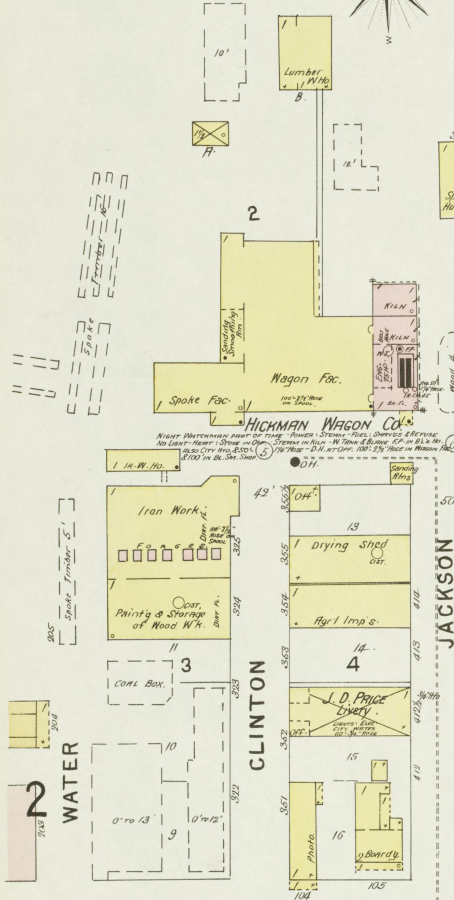
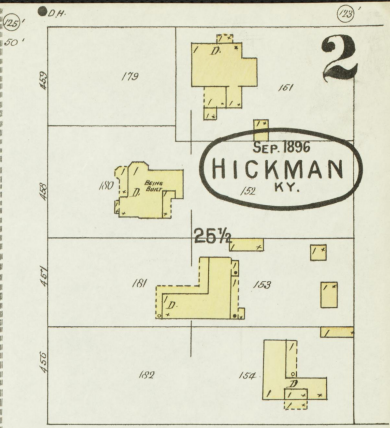
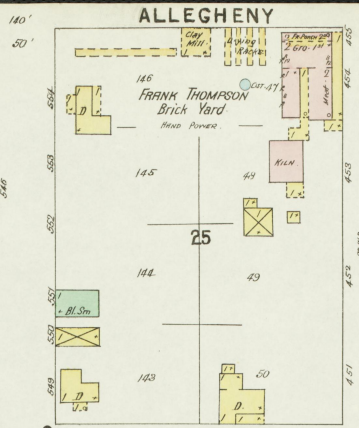
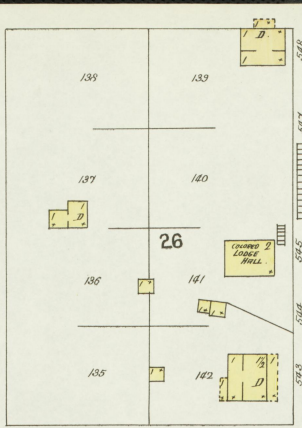
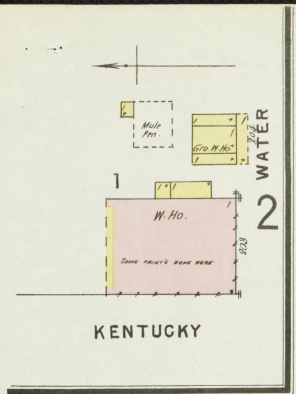
SPICIALS.	NUMBER
Baptist Church,	2
Class, F. E. Cooperage,	2
Catholic Church of the Sacred Heart,	2
Christian Church,	3
City Electric Light & Water Works,	3
County Court House & Jail,	3
Ellison, L. P., Corn Mill,	1
Episcopal Church,	3
Eversal & Co. Boiler Mill,	4
Hickman College,	1
Boiler Mill,	4
Steam Laundry,	4
Wagon Co.,	4
Higlesberger, F., & Sons, Lumber Yard,	1
La Glade Hotel,	3
Methodist Episcopal Church,	3
Missionary Baptist, Colored,	1
N. C. & St. L. R. R. Depot,	1
Taylor & Tyler, Spoke Factory,	4
Thompson, F., Brick Yard,	3
Tyler, H. A., & Sons, Box Factory,	3
" " " " Saw Mill,	4



Map Edition  
31 JUL 1905  
Library of Congress

57/645  
740





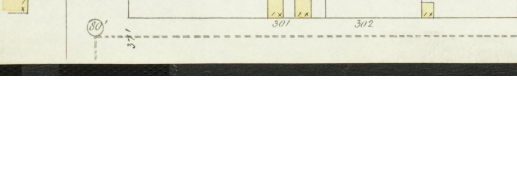
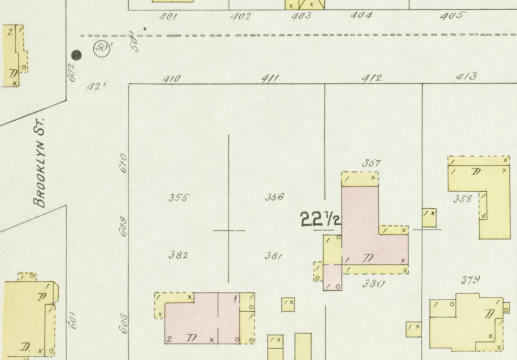
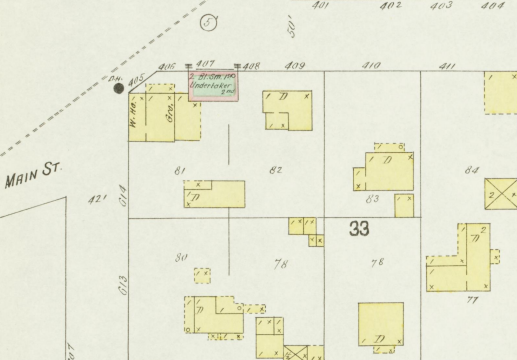
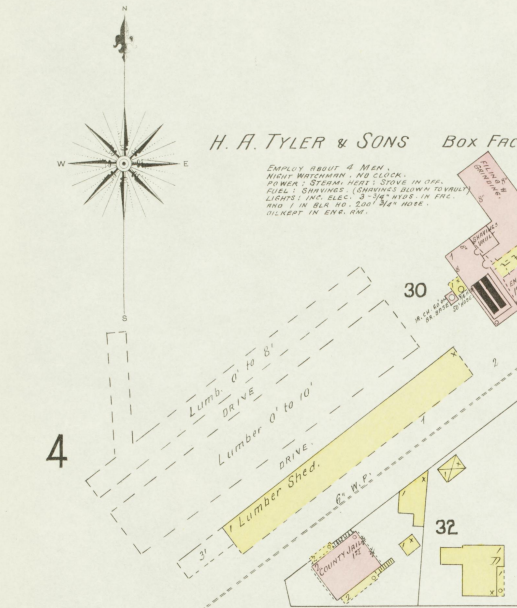
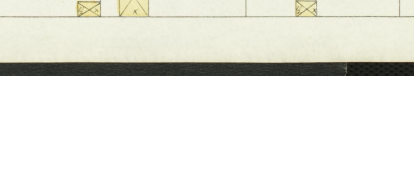
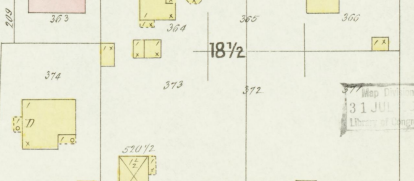
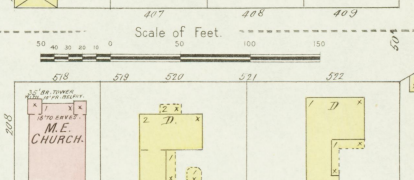
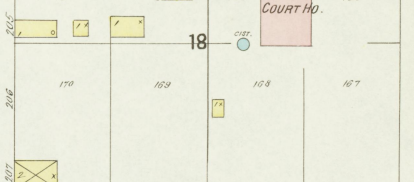
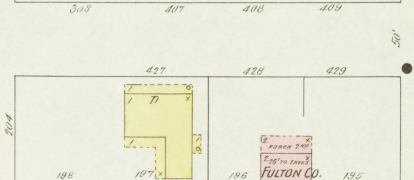
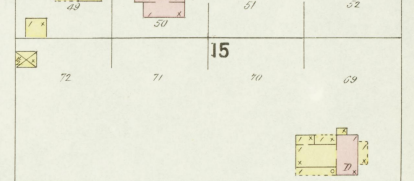
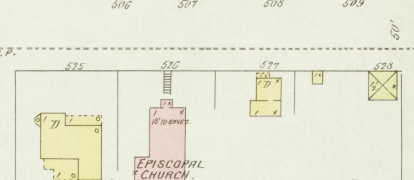
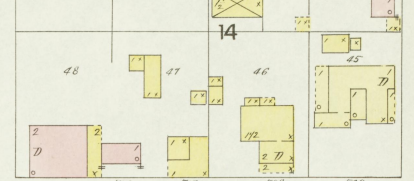
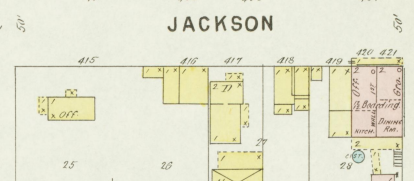
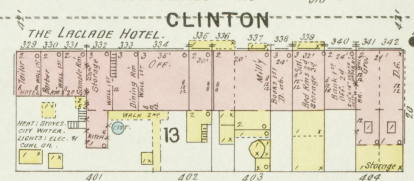
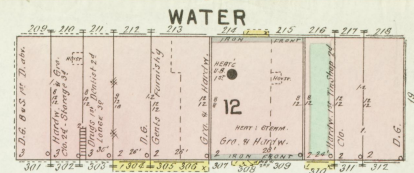
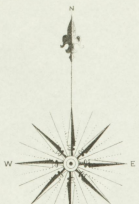
Scale of feet



SEP 1896  
HICKMAN  
KY.

H. A. TYLER & SONS BOX FACTORY.

EMPTY ABOUT 4 AC.  
W/OUT BUSHWOOD, AND CROCK.  
POWER: STEAM, HOT STOVE IN 100.  
PILLS, SHAWMOS, CONTAINS DOWN TO WOOD  
LIGHTS, 1000 BEE. 3000 FEET IN THE  
WOOD, IN 60, 95, 500' 3/4" HOSE.  
DILKENT IN 600' AM.



TENNESSEE

UNION

CUMBERLAND

MAIN ST.

OBION

BROOKLYN ST.

CARROLL

MOULTON

WELLINGTON

BUCHANAN

Scale of Feet

SEP 31 1896  
HICKMAN  
KY.



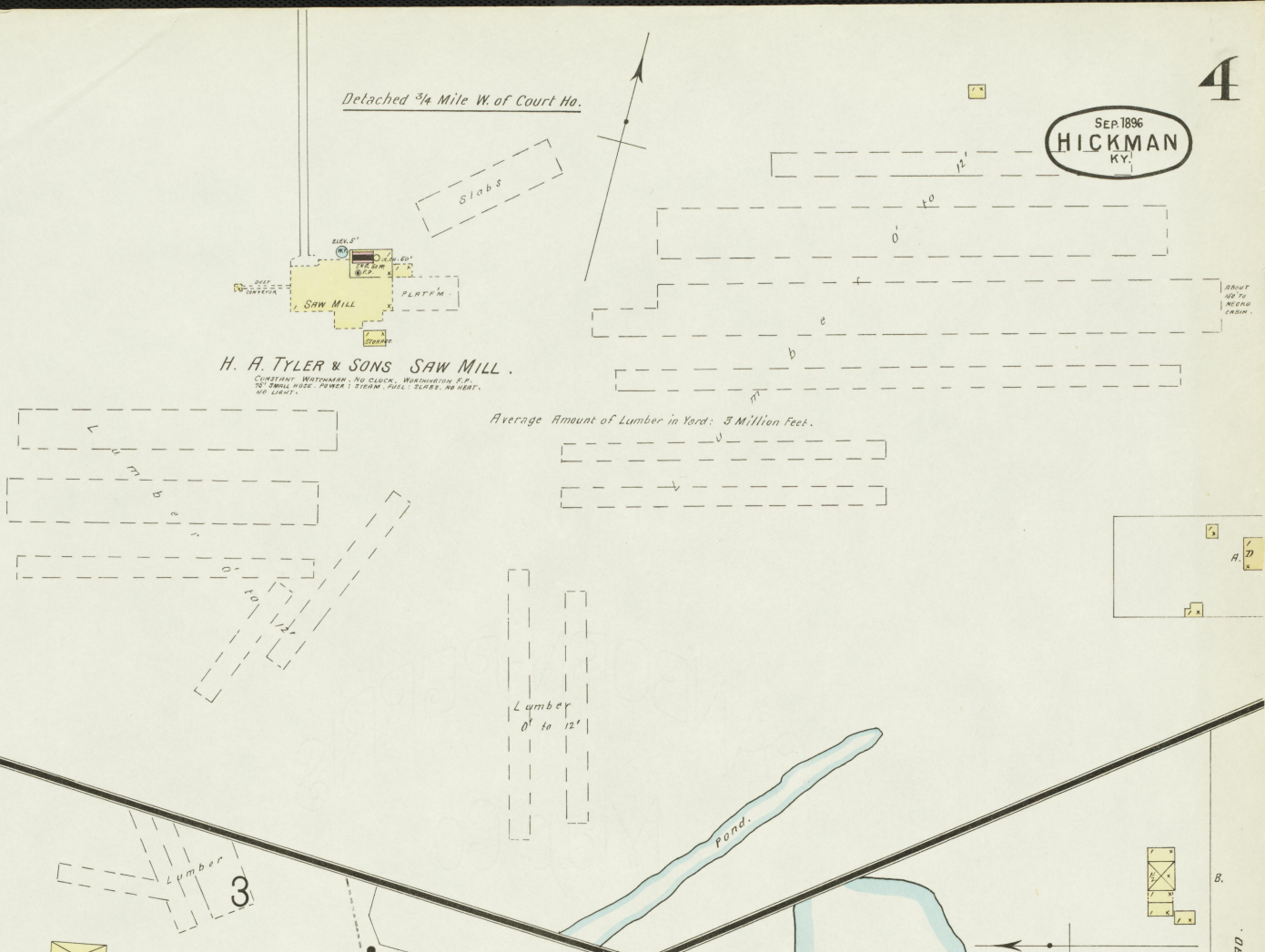
SEP 1896  
**HICKMAN**  
KY.

Detached 3/4 Mile W. of Court Ho.

**H. A. TYLER & SONS SAW MILL.**

CONSTANT WATCHMAN, NO CLOCK, WASHINGTON P.M.  
NO SMALL HOSE, POWER, STEAM, FUEL, SLABS, NO HEAT,  
NO LIGHTS.

Average Amount of Lumber in Yard: 3 Million Feet.



**HICKMAN STEAM LAUNDRY.**  
BEING REMODELED.

POWER - STEAM.  
HEAT - " "  
FUEL - COAL.  
NO LIGHTS.  
CITY WATER.

**HICKMAN ROLLER MILL**  
**EVERSOL & CO.**

Cap. 75 Bbls.

NO WATCHMAN, NO CLOCK,  
POWER - STEAM, HEAT - STEAM, IRON  
ROLES, WOOD, LIGHTS, COAL, NO  
CITY WATER, BUT I HAVE PALS W  
BUCKET'S PALS.

MACHINERY, 15' 4" DIA. 200' HULLS,  
1 TIGON HULLER, 1 COON HULLER,  
2 NO 2 PUMMERS, 1 BRAM DIFTER,  
1 WHEAT COOKER,  
1 MEAL SIFT, 1 CENT. REEL,  
35' 1' BRANDISTER,  
1 WHEAT SEPARATOR,  
1 CONE  
16 STAIRS OF ELEVATORS.

**OBION**

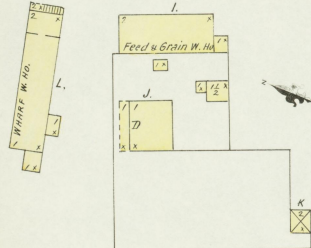
**HICKMAN WAGON CO.**

Wagon W. Ho.

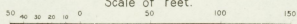
One Mile E. of Court Ho.

NO WATCHMAN, HEAT, 2 STOVES  
IN FRONT SHOP, NO LIGHT,  
NO FIRE H.P.P.

Paint Shop.



Scale of Feet.



**FULTON**

**7TH ST.**

**MOSCOW**

58

59

One Mile E. of Court Ho

**TAYLOR & TYLER'S**  
**SPOKE FAC.**  
(Not in Operation) 14' 6" 46"  
NO WATCHMAN.

SPOKE FAC.

Wagon Belt  
w/ Sawline

Hygie' Imp's

PLAT P.M.

N. C. W. ST. L. & R. R.