

Musicians Will Open Founders Program

Orchestra, Chorus To Perform Twice

The University Orchestra and Chorus will open the Founders Week activities with two performances of a four-part program in Memorial Hall Sunday at 3 and 8 p.m.

The presentation is under the direction of Dr. Herman Spivory, head of the Music Department, with Maude Lewis and Almo Krivintz acting as associate directors.

The first three parts of the program will be by the orchestra. These are, "Prelude to Act 3 of Leherknig" by Wagner, "Symphony No. 5 in B-flat Major" of Johannes Brahms, and "The Swan" by Camille Saint-Saens.

The fourth composition, called "John Jacob Niles Suite" by the Kentucky folk song specialist, includes love songs, carols, and ballads based on folk music collected or written by Niles.

Special guests at both the afternoon and evening performances are members of Phi Beta and Phi Mu Alpha fraternities.

Applications For NACA Work Taken

Applications for engineer, chemist, physicist, and metallurgist positions accepted by the National Advisory Committee for Aeronautics for laboratories in Virginia, California, and Ohio.

Wised Up Senior Divulges How To Beat Registration

After three and one half years of wear and tear and great mental anguish when it comes time for registering and classifying, I have finally discovered a few tricks that I would like to pass on to the incoming groups, so they won't suffer as I have.

Undoubtedly first, and most important is to learn the general order of classifying and registering. If this is not understood completely, their defeat is all you may hope for.

Secondly, and really quite important, is getting a registration slip so you can get a jump on the rest. The beauty of this move can be appreciated by someone who has obtained a registration slip early.

Thirdly, and really quite important, is getting a registration slip so you can get a jump on the rest. The beauty of this move can be appreciated by someone who has obtained a registration slip early.

Finally, and really quite important, is getting a registration slip so you can get a jump on the rest. The beauty of this move can be appreciated by someone who has obtained a registration slip early.

Foreign Study Organization Lists Program

Travel and Study, an organization for study abroad, has announced a summer series of study programs for undergraduate and post-graduate students in the fields of humanities, economics, political science, and the vocational arts.

The programs, to be directed by American educators, will be offered at several European schools including the Universities of Oxford, Cambridge, and London in England; the Sorbonne and the Universities of Montpellier and Grenoble in France; and the Universities of Upsala, Stockholm, Copenhagen and Oslo in the Scandinavian countries.

Air tours to the study programs have been arranged by Travel and Study and certificates or special diplomas will be presented to students who successfully complete the courses.

Information may be obtained by writing Travel and Study, Inc., 110 E. 57th Street, New York 23, N. Y.

New Zoology Museum Opens

The opening of a new Zoology Museum which contains a variety of specimens has been announced by the zoology department.

Located in room 10 of the Funkhouser Biological Sciences building, the museum contains a set of skeletons of mammals illustrating numerous orders of animal life.

Plans were made for the museum in 1933 when the designs for the Biological Sciences building were completed.

Two years ago the University authorized funds for the project and the first unit was set up. The new building was completed in 1948.

The graduate reading examination in German will be given on 2 p.m., April 24, in room 302, Miller Hall.

Another way to sign up for early classes is to write the instructor of the class. This is a good test for both you and the instructor.

The last way to sign up for a class early but one of the surest ways to choose different classes that you want, and also to confuse the Registrar's Office when they try to check on you.

But I'm warning time! This is the second week of the semester and haven't finished registering or classifying yet!

Coed Leads Y Meet - Frances D. Dierker, who is a member of the Phi Kappa Phi Honor Society and a member of the YWCA cabinet, will be co-chairman of the annual Kentucky YWCA Leadership Training Meeting to be held at Morehead State College Feb. 24-25.

Kentuckians Honored in Program Scheduled For Founders Week

Year's Study In Stuttgart Is Offered

An opportunity for a year of study in Germany on a person-to-person exchange basis is available to a University student with certain qualifications. It has been announced by Mr. Bart N. Peak, director of the YMCA.

Under the plan, the UK student would exchange places with a German boy, Nalle Neidhardt, son of a Stuttgart physician, and would live in Dr. Neidhardt's home.

Three awards to students of finance to abandon their plans to race school and march on Frankfurt in the hope of obtaining more state aid.

Dr. Donovan, a past president of the Kentucky Education Association, said in a wire to the Ashland Education Association, "Such a move, in my judgment, will not win friends for the schools.

Prizes Prompt Stocks Study - Three awards to economics and finance students have been announced by the University of Kentucky.

Students interested in the details of information about young Nidhardt may obtain further information from Mr. Peak at the YMCA office.

Dr. H. D. Behrens of Geneseo, N. Y., left here yesterday after studying the organization and administration of the College of Education and the building program on the University campus.

Dr. Behrens, chairman of the Department of Education at the State Teachers' College in Geneseo, is making a tour of several universities and colleges. UK was his second stop.

More than 100 foreign study fellowships and scholarships for a 1950-51 academic year now are available to American college students.

Offered under auspices of the Institute of International Education, the foreign study program includes scholarships to colleges and universities in various countries.

Dr. A. E. Bigge, foreign student adviser, announced this week.

Local campus activities in connection with the scheduled meeting are under the direction of Bill Cody, newly appointed student secretary for the University.

The following years are open for the school year 1950-51 in the countries indicated:



LAST CHANCE 1950 KENTUCKIAN

DON'T LET THIS HAPPEN TO YOU! - A graphic example of what can happen if you put off ordering your 1950 KENTUCKIAN is illustrated in this scene from the KENTUCKIAN office.

Business manager of the 1950 KENTUCKIAN, announced today. The KENTUCKIAN will be distributed before school is out, and subscriptions can be obtained in the KENTUCKIAN office, next to the Post Office in McVey Hall for \$5.

In previous years, 500 books were ordered in addition to the number of subscriptions sold. This year, due to increased printing and engraving costs, only the books subscribed to will be ordered.

Many people were disappointed because they were unable to buy a 1949 KENTUCKIAN. The few that were left at the beginning of the year were tied up by 1949 senior orders. There are a few 1948 books left, which seniors failed to claim.

Some 1948 KENTUCKIANs were sold for \$1, because there was a big surplus, due to a mistake in ordering. The 1949 and 1950 KENTUCKIANs are \$5, and there will be no surplus.

Work on the 1950 KENTUCKIAN is nearing completion. Charles Patrick, editor, said. The last pictures will be sent to the engraver this week. The cover has been ordered from the Kingsport Press and will be delivered to the printer in a few days.

Local campus activities in connection with the scheduled meeting are under the direction of Bill Cody, newly appointed student secretary for the University.

The following years are open for the school year 1950-51 in the countries indicated:

Enland: Five scholarships with a value of 200 pounds each are open for the study of labor relations at Ruskin College, Oxford.

Italy: This government is expected to renew its six fellowships each with a value of 380,000 lire. A value of 1,000,000 lire annually granted by Italian universities.

Switzerland: It is expected that many free tuition scholarships will be offered and that certain schools will add a sum ranging from 100 to 300 Swiss francs.

Pan American World Airways system offers 25 travel fellowships which cover only round trip transportation from the United States terminal to the terminal in the Latin American country agreed upon.

Further information may be obtained from Dr. Bigge, room 302-A, Miller Hall.

Students Lead BSU Revival

A University Revival, conducted and financed by University students, is planned for next week, Feb. 20-25. Speakers for the meetings to be held by the Baptist Student Union at the group Student Center, 371 S. Lime, will be Walter K. Price, graduate student; Gene Reese, Arts and Sciences senior; Ed Cunningham, January Arts and Science graduate; and Jim Harty, associated secretary of the State BSU.

C. Hope Hockensmith, Law College junior and president of Kentucky Young Republicans, will conduct the singing.

The success and meaning of the revival, one of a series of such programs conducted by college students throughout the South, will be discussed at the King's Hour program of the group at 7:30 tonight by the Rev. Dr. Baker, Ft. Worth, Texas.

The 20-year-old pastor of Birchen Avenue Baptist Church in Ft. Worth has worked since 1945 with student groups throughout the South and in Hawaii. He will arrive on campus today, leaving tomorrow for Eastern State Teachers College in Richmond where he will speak throughout next week in a similar revival.

Local campus activities in connection with the scheduled meeting are under the direction of Bill Cody, newly appointed student secretary for the University.

The following years are open for the school year 1950-51 in the countries indicated:

Enland: Five scholarships with a value of 200 pounds each are open for the study of labor relations at Ruskin College, Oxford.

Italy: This government is expected to renew its six fellowships each with a value of 380,000 lire. A value of 1,000,000 lire annually granted by Italian universities.

Switzerland: It is expected that many free tuition scholarships will be offered and that certain schools will add a sum ranging from 100 to 300 Swiss francs.

Pan American World Airways system offers 25 travel fellowships which cover only round trip transportation from the United States terminal to the terminal in the Latin American country agreed upon.

Further information may be obtained from Dr. Bigge, room 302-A, Miller Hall.

Enland: Five scholarships with a value of 200 pounds each are open for the study of labor relations at Ruskin College, Oxford.

Italy: This government is expected to renew its six fellowships each with a value of 380,000 lire. A value of 1,000,000 lire annually granted by Italian universities.

Switzerland: It is expected that many free tuition scholarships will be offered and that certain schools will add a sum ranging from 100 to 300 Swiss francs.

Pan American World Airways system offers 25 travel fellowships which cover only round trip transportation from the United States terminal to the terminal in the Latin American country agreed upon.

Prizes Prompt Stocks Study

Three awards to economics and finance students have been announced by the University of Kentucky.

Students interested in the details of information about young Nidhardt may obtain further information from Mr. Peak at the YMCA office.

Dr. H. D. Behrens of Geneseo, N. Y., left here yesterday after studying the organization and administration of the College of Education and the building program on the University campus.

Dr. Behrens, chairman of the Department of Education at the State Teachers' College in Geneseo, is making a tour of several universities and colleges. UK was his second stop.

More than 100 foreign study fellowships and scholarships for a 1950-51 academic year now are available to American college students.

Offered under auspices of the Institute of International Education, the foreign study program includes scholarships to colleges and universities in various countries.

Dr. A. E. Bigge, foreign student adviser, announced this week.

Local campus activities in connection with the scheduled meeting are under the direction of Bill Cody, newly appointed student secretary for the University.

The following years are open for the school year 1950-51 in the countries indicated:

Enland: Five scholarships with a value of 200 pounds each are open for the study of labor relations at Ruskin College, Oxford.

Italy: This government is expected to renew its six fellowships each with a value of 380,000 lire. A value of 1,000,000 lire annually granted by Italian universities.

Switzerland: It is expected that many free tuition scholarships will be offered and that certain schools will add a sum ranging from 100 to 300 Swiss francs.

Pan American World Airways system offers 25 travel fellowships which cover only round trip transportation from the United States terminal to the terminal in the Latin American country agreed upon.

Further information may be obtained from Dr. Bigge, room 302-A, Miller Hall.

Enland: Five scholarships with a value of 200 pounds each are open for the study of labor relations at Ruskin College, Oxford.

Building Dedication Is High Point Of 85th Observance

This is the best program that has been prepared for the University," was the comment of President H. Donovan on the program for Founders Week to celebrate the eighty-fifth anniversary of the University and dedicate the new Fine Arts Building.

The program will be headed by Dr. Herman Spivory, head of the English department.

Founders Day has been observed for six years but this is the first time that such an extensive program has been planned.

Centered around the dedication of the new Fine Arts Building, the Founders Week program features appearances of several figures prominent in national music, literary and art circles, some of Kentucky's leading authors and artists, and personnel from the UK music and dramatics departments.

Building Is Milestone - The erection of the Fine Arts Building and its dedication is a new milestone in the accomplishments of the University," President Donovan said.

The educational program of music, art and drama which will be carried on in the building will have a tremendous influence on the students of Kentucky and their aesthetic values," he continued.

Music will be the theme of both the opening and closing programs of the week. Two performances of the University Orchestra and Chorus will be given on the main floor of the building at 3 p.m. in Memorial Hall and the second will begin at 8 p.m.

Dr. Howard Hanson, director of the Louisville Philharmonic Orchestra under the baton of Robert Whitney will bring the Founders Week program to a close with a performance in Memorial Hall.

Dr. Howard Hanson, director of the Louisville Philharmonic Orchestra under the baton of Robert Whitney will bring the Founders Week program to a close with a performance in Memorial Hall.

Dr. Howard Hanson, director of the Louisville Philharmonic Orchestra under the baton of Robert Whitney will bring the Founders Week program to a close with a performance in Memorial Hall.

Dr. Howard Hanson, director of the Louisville Philharmonic Orchestra under the baton of Robert Whitney will bring the Founders Week program to a close with a performance in Memorial Hall.

Dr. Howard Hanson, director of the Louisville Philharmonic Orchestra under the baton of Robert Whitney will bring the Founders Week program to a close with a performance in Memorial Hall.

Dr. Howard Hanson, director of the Louisville Philharmonic Orchestra under the baton of Robert Whitney will bring the Founders Week program to a close with a performance in Memorial Hall.

Dr. Howard Hanson, director of the Louisville Philharmonic Orchestra under the baton of Robert Whitney will bring the Founders Week program to a close with a performance in Memorial Hall.

Dr. Howard Hanson, director of the Louisville Philharmonic Orchestra under the baton of Robert Whitney will bring the Founders Week program to a close with a performance in Memorial Hall.

Dr. Howard Hanson, director of the Louisville Philharmonic Orchestra under the baton of Robert Whitney will bring the Founders Week program to a close with a performance in Memorial Hall.

The Kentucky Kernel

All signed articles and columns are to be considered the opinions of the writers themselves, and do not necessarily reflect the opinions of *The Kernel*.

PUBLISHED WEEKLY DURING THE SCHOOL YEAR, EXCEPT HOLIDAYS OR EXAMINATION PERIODS.

Entered at the Post Office at Lexington, Kentucky, as second class matter under the Act of March 3, 1879.

SUBSCRIPTION RATES \$1.00 per semester

- George Reynolds Editor
- Bob Cox Managing Editor
- Nell Blair News Editor
- Tom Dinkin Sports Editor
- Harold Flemer Business Manager
- Betty Bogges Society Editor
- Holton Mastin, Head Feature Writer
- Wilfred Lett Advertising Manager
- Dick Maske, Joe Lee, Jean Cook Copy Desk
- Joan Cook, Bruce Dunlap Advertising Staff
- Rosemary Hilling and Bill Mansfield Assistant News Editors

MEMBER—Kentucky Intercollegiate Press Association
Lexington Board of Commerce
Kentucky Press Association

REPRESENTED FOR NATIONAL ADVERTISING BY
National Advertising Service, Inc.
1200 Madison Ave., New York, N. Y.
4200 Madison Ave., New Orleans, La.
4200 Madison Ave., Los Angeles, Cal.

- Earl Conn, Kent Hollingsworth, Bob Gorham Asst. Sports Editors
- Herbert Allen Moore, Gene Phillips Cartoonists
- Bob Fain News Desk
- Ben Williams Photographer
- Dorothy Allen Circulation Manager
- Irwin Higgs Librarian
- Henry Malony, Simpson Tompkins, Bob Fain, Shirley Porter, W. J. Boushey, Linda Patterson, Frances West, Joe Coyle, Marilyn Faulkner, Julie Blumenthal, Joyce Cooley, Bill Simon, Lewis Donohew, Janet Anderson, Kathryn Whitmer, Jacqueline Day, Temple Cole, Wes Bird, Mary Sweetman, and Jack Suttles Reporters

Founders Week

Founders Week is to be one of the outstanding events in the history of the University of Kentucky. It will present a well-rounded program worthy of the occasion it is designed to celebrate. Seldom will any of us have an opportunity to witness so impressive a list of events during any one week.

The celebration of the 85th anniversary of the University and of the dedication of the new Fine Arts Building is of definite interest to a great many persons. Practically no room is left for any of the programs which have been planned for the week, only a few tickets to the Sunday performances by the orchestra and chorus remaining after the first rush.

Many who wanted tickets were unable to get them. If more of the programs were to be held in Memorial Hall, larger audiences could be seated. But in that case one of the chief purposes of the week's festivities could not be realized—the audiences would not be introduced to the Guignol theater and other parts of the new Fine Arts Building. Those who wish to, however, will be able to hear most of the programs by radio.

Plastic I. D. Cards

Plastic identification cards now being considered by Dean Kirwan and Athletic Director Shields would be good for all University functions, seem to be a good answer to the present difficulties in handling the ticket situation.

Although no card has been approved as yet, if one is accepted it probably will include a picture along with other data concerning the student. In addition to the usual activities, next year's ticket will be good for a series of at least eight community concerts, if present plans are carried out.

Unlike the present ticket books, lost identification cards could be replaced. They should serve as excellent identification for cashing checks and in other business transactions.

BookKernels

After reading the impressive list of Kentucky authors to be presented in a symposium here next Friday night and taking a one from other columns, the Kernel is beginning a series of book reviews, written by students and featuring the works of Kentucky authors. We hope our readers will find this new section an interesting one—EAJ.

All The King's Men
By Robert Penn Warren
Kentucky-born Robert Penn Warren has pictured American life as it exists today in his Pulitzer Prize-winning novel, "All The King's Men."

The book, the life story of a farmer who becomes governor of his state and possibly its dictator, is supposedly built around the story of Louisiana's Huey Long.

It is fast-moving from the start and interesting to the finish as it takes the reader behind the scenes in one of the exciting chapters of our time, the story of the American politician.

Willie Stark is the name of the farmer with ideas of his own of how a state should be run. Jack Burden is the reporter who comes to know Willie and becomes his right-hand man through his administration. It is Jack Burden who tells the story. The author does not seem to

criticize nor applaud Willie Stark. Rather he tells of his rise to power; and points at the things along the way which make Willie become a hard ruler of his state.

Intervened into the Stark story is the battle of Jack Burden to find himself and his place in life. It is not a pretty picture of the American scene which Warren paints but it is indeed an interesting one.

Three women figure prominently in the story. Willie's wife soon loses her husband as he starts his rise to power. Willie's right-hand woman who shows him the way to the top, Sadie Burke, is too much a part of the Stark machine to figure in his life. Jack Burden's girl of old, Ann Stanton, however, yields to Willie and becomes his mistress.

A series of events leads to Willie's assassination and at the conclusion of the book, Jack and Ann are left to make what they can of their already shattered lives.

The description of the tremendous power which Willie weaves over public opinion is a revelation in itself. The book has now been made into a movie and all who see the picture will find the book equally as gripping and as interesting.

LETTERS to the Editor

Disgusting
Editor, The Kernel:

I would like to call to your attention the lack of respect and care that the University students afford the facilities offered them. The new Fine Arts Building, the pride and joy of the campus, has already fallen prey to careless students. The loungers are a shining example—knee-deep in paper towels, the basins used for trash cans, and cigarette burns in the new leather couches.

The Art Department walls, floors, and furniture are spattered with paint, where thoughtless students cleaned their brushes by squeezing them on the floor or waving them in the air. The Music Department pianos have cigarette burns on the finish, and gum covering many a square inch under the piano seats.

Students have already carved names, insignias and Greek letters on many of the desks, and penciled the mortar will crack from the bricks, and the new Fine Arts Building will become just another "old classroom building."

Are we going to let the Fine Arts Building become, in a few years, another White Hall—too old and decrepit to repair, but necessary for classes? It's up to the students.

A Disgusted Student
The winner of the contest of Chesterfield cigarettes for the most interesting "Letter to the Editor" on last week was the one signed "Student."

If the Kernel would write this letter will stop by the Kernel sports office (McKee Hall), Tom Dinkin, one of the campus representatives for Chesterfields, is present the cigarettes to him.

All winning letters must be signed. If the author does not want his name to be used please state this and the reward will be completed with. Furthermore, at least two letters must be run weekly in the Kernel to be considered.

Y Secretary Visits

Miss Rosalie Oakes, regional secretary of the YWCA, will make her annual visit to the campus next week and will be in the YW office.

Miss Oakes was executive secretary of the YWCA at the University from 1942 through 1944.

Taxicabs! Dial 2-2230
LEXINGTON YELLOW CAB CO.
Incorporated

The Smith-Watkins Company
INCORPORATED
236 E. MAIN ST.
BUILDER'S HARDWARE and
SPORTING GOODS
PHONE 4-2535
Ping Pong Sets
Super-Halex Ping Pong Balls

SAVE
On Your
Laundry - Dry Cleaning
Drive In Service
15 percent Discount
De BOOR
opposite stadium
Laundry Cleaning

Watches • Diamonds • Jewelry
Lexington Jewelry & Luggage Co.
143 S. Lime Dial 2-5125

ARTS, INC.
ART SUPPLIES and LESSONS
HAND PAINTED TIES AND SCARFS
SMART MAN-TAILORED BLOUSES
JEANS AND CLAM DIGGERS
AND HANDMADE CERAMICS
108 W. EUCLID
• Around The Corner From Beckers

YOU'LL ENJOY GOOD FOOD
in
A Friendly, Informal Atmosphere
at
The Lexington Room
of
The Kentuckian Hotel
"NICER BUT NOT SO EXPENSIVE"
East High Street at the Viaduct

Vague Magazine Is Accepting Manuscripts

Manuscripts are still being accepted for publication in Vague, campus literary magazine. Dr. Janice Haselden, faculty adviser of the magazine, has announced.

Essays, plays, poems, stories, or other articles should be submitted by March 1 to Dean Haselden's office, Helen Dress at the Tri-Delta house, or Virginia Henry, P. O. box 3944.

Vague is edited by Chi Delta Phi, women's literary honorary, and advertising is solicited by members of Theta Sigma Phi, women's professional journalism society.

Ag Instructors Speak To Training School

Two instructors in the College of Agriculture and Home Economics, J. B. Kelley and Dean Hamilton, were speakers at a Training School held this week on the campus and sponsored by the Rural Electrification Association.

Kelley spoke on the problems involved in a home water system and Hamilton spoke on problems of a water supply.

Dr. Linwood Brown of the Experiment Station spoke on the sources of water and their protection.

POPULAR PRICED
Breakfast and Luncheons
Chicken Pot Pies
Giant Hamburgers
Steak Sandwiches
Italian Spaghetti
Home Style Chics
BUDGET PRICES FOR STUDENTS
Complete Line of Sundaes
Hollingsworth Candy
We'll Meet You At
Viaduct Store
East High & Viaduct

Short Orders
Sandwiches
LUNCHES
Of All Kinds
Serving 3 Times
Daily, 7 a.m.—10 p.m.
SUNDAY
8 a.m. Till 10 p.m.

Student SPECIAL
50c LUNCH DAILY
So Conveniently Located
Come Over To The . . .
Campus Kitchen
545 S. Lime

Four Go To Florida For Pop Convention

Four students are attending a Pop Convention sponsored by the University of Florida in Gainesville today and Saturday.

The convention group will discuss problems of school spirit, financing pep clubs, and card sections. Students attending the convention are Eugene Stevens, president of Saky, Betty White, Kitty King, and Ed Strode, Saky representatives. Chairman of the group is Mrs. J. Howard King.

WATCH REPAIRING
All Work Tested by **WATCH MASTER**
And Fully Guaranteed
We Have For Sale Watches
RADIO REPAIRING
Give Us A Try
Our Aim is To Satisfy
RADIOS FOR SALE
RAY ARNOLD
L. T. ARNOLD
504 Euclid Ave., Lexington
Dial 3-4828

THE TOPS IN TUNES
MARTA
Tony Martin
WITH MY EYES WIDE OPEN
I'M DREAMING
Patti Page Quartette
OPEN DOOR — OPEN ARMS
Andrew Sisters
I ALMOST LOST MY MIND
Fran Warren
Record Department

2¢ PER GALLON DISCOUNT
On all Gasoline sold to University Students
—Just Tell The Attendant That You Are A Student at UK—
Car Wash — Lubrication — Accessories
Ralph Henderson
Shell Service Station
Corner of High and Woodland

Chevrolet alone in the low-price field gives you highest dollar value . . . famous Fisher Body . . . lower cost motoring!



FIRST . . . and Finest . . . at Lowest Cost!

CHEVROLET
AMERICA'S BEST SELLER . . . AMERICA'S BEST BUY!

Here's your buy for 1950 . . . for all the things you want in a motor car at lowest cost . . . the new Chevrolet with Style-Star Body by Fisher!

It's the one and only low-price car that offers you a choice of automatic or standard drive . . . with the thrilling new Powerglide Automatic Transmission and new 105-h.p. Valve-in-Head Engine for finest automatic drive results . . . and with a highly improved, more powerful Valve-in-Head engine and the famous Silent Synchro-Mesh Transmission for finest standard drive results—at lowest cost.

Chevrolet—and Chevrolet alone—brings you all these advantages at lowest cost! NEW STYLE-STAR BODIES BY FISHER . . . NEW TWO-TONE FISHER INTERIORS . . . CENTER-POINT STEERING AND UNITED KNEE-ACTION RIDE . . . CURVED WINDSHIELD WITH PANORAMIC VISIBILITY . . . BIGGEST OF ALL LOW-PRICED CARS . . . PROVED CERTI-SAFE HYDRAULIC BRAKES . . . EXTRA-ECONOMICAL TO OWN, OPERATE AND MAINTAIN.

POWERGLIDE AUTOMATIC TRANSMISSION
Combination of Powerglide Transmission and 105-h.p. Engine optional on De Luxe models at extra cost.

SEE YOUR LOCAL CHEVROLET DEALER
Conveniently listed under "Automobiles" in your local classified telephone directory

"Boomerang" Will Be Shown Three Times Today

"Boomerang" starring Dane Andrews and Julie Wyatt will be shown in Memorial Hall today at 3 p.m., 7 p.m., and 9 p.m. Admission is 30 cents.

PLATE LUNCHES
Short Orders
Featuring A Wide Variety of **TASTY SANDWICHES**
Big Blue
385 S. Lime
Next To Becker

Friday, February 17, 1950

The Hitching Post



By Betty Boggers

"Well, J. C. (Joe College), little cupid has come and gone. In his haste to get away we have boxes of candy and flowers and mucho hitching. Or, then maybe the boys were getting eager to hang those gleeful pins and for practice they pinned a few girls."

"Now, just a minute! Why all week end the boys' returned and with this for a background what else, but that the golden arrow should hit quite a few couples. Personally, Ky, Kitty, the Valentine dancette, with all those good looking girls surrounded by valentines starting even me thinking about pinning."

"Not you sentimental 'v' heart, see, and Drovers, J. C. - I can't believe it. I thought boys considered us way off base."

"Well, Ky, Kitty, if you don't believe we are still in favor of the cards, candy, and flowers gaze below, my cherie?"

Alpha, to Tom Graham, Phi Kappa Tau; Roma Lee Richterkossing, Zeta Tau Alpha, to Robert K. Hamilton, Lambda Chi; Charlene Davies, Chi O, to Andy Anderson, Sigma Nu; Joyce Lewis, Chi O, to Phil Kruger.

Corralled
Karolyn Spillman, Alpha Xi, to Gerald Reams, Phi Delta Kappa '49; Audrey Cawood, Zeta Tau Alpha, to Bill Van Pelt (Over, Ky.); Carolyn Glenn, Chi O (class of '49), to Victor Karline; Doris Cook to Kenneth Elliott.

Branded
Mary Ann Goodson, Chi O, and Joly Rodgers, KA; Martha Jane Martin, Zeta Tau Alpha, and J. F. Daugherty, Psi Chi at U. of L.

Social Calendar

Attention Social Chairmen
The second semester social calendars must be turned in to Miss Margaret Bruce Cruise, Social Director, Room 122, at the SUB.

All sororities, fraternities, and other organizations on the campus must have their social calendars cleared through the Social Directory.

Friday, Feb. 17
Mardi Gras formal dance at the SUB, 8-12 p.m.
International Dinner at the SUB, 6 p.m.
Delta Zeta rush party, 6:30-8:30 p.m.

Sunday, Feb. 19
Kappa Delta dessert for Phi Kappa Tau.
Alpha Lambda Delta tea at Carol Chambers house, 5-7 p.m.
Alpha Gamma Delta rush party, 6:30-8:30 p.m.

Monday, Feb. 20
Kappa Delta rush party, 4-5:30 p.m.

Tuesday, Feb. 21
Delta Zeta rush party, 6-7:30 p.m.
Wednesday, Feb. 22
Alpha Xi Delta rush party, 7:30 p.m.

Alpha Lambda Delta Entertains With Tea

Sponsors and members of Alpha Lambda Delta and the Deans of Women will be entertained with a tea Sunday from 5 to 7 p.m. Carol Chambers, president of the honorary is the hostess and will entertain with the tea at the home of Dr. and Mrs. Ray Taylor.

DOES THE JOB!
BONDED
NOSE and THROAT DROPS for NASAL CONGESTION

For Sale in Lexington by HUTCHINSON DRUG Main & Dewese Phone 21 or 640 Open until 2:00 week nights 3:00 Saturday

Sportleigh Coats

have a new low price
\$3500

We consider Sportleigh Coats the world's best for the price.

They conform to the highest standards of fabric and tailoring.

They employ original fabrics, designed for them alone... bright, fresh, in consonance with the season.

Their styles have zest and originality.

(Exclusive With Us)

(New Third) **perkins** (New Third)

Pretty Socks To Pay At SUKY Twirp Hop

The Twirp (The Woman Is Requested to Pay) Sock Hop sponsored by SUKY will be held Friday, February 21 at 8:30 p.m. in the SUB Blue Grass Ballroom.

"The dance is being sponsored to raise money for the SUKY card section next year."

Contests for the prettiest pair of socks and the most astute hitchhiker will highlight the evening. Prizes will be given.

Tommy Raddeen, in charge of arrangements, has announced that Smoke Richardson and his orchestra will play.

Tickets will be sold by the members of SUKY next week. The admission is \$2.50 stage or drive.

Dairy Meeting Held

A two-day field meet, sponsored by the College of Agriculture and Home Economics and the Kentucky Dairy Industry Committee, ended Wednesday with an approximate attendance of over 100 cream and milk experts from various parts of the state.

The program was concerned with advances which have been made in the dairy industry. Two of the principal speakers were E. Haskel, vice-president of Beatrice Foods Company, Chicago, and Dr. K. L. Milstead, who is in charge of the Kentucky, Ohio, Indiana, and Tennessee branch of the Federal Food and Drug Administration.

ETA Club Will Hear Dean Of Ed College

Dr. Frank Dickey, dean of the College of Education, will be the guest speaker at the regular meeting of the Future Teachers of America Club Monday night at 7 p.m. in the recreation room of the Education Building.

Dr. Dickey will speak on "Educational Opportunities in Kentucky."

Theta Sig Pledges

The name of Nancy Gaslin, journalism junior, was omitted from the list of pledges to Theta Sigma Phi, women's professional journalism society, published last week.

SUB's Eat Wienes

The Outing Club, SUB service committee, has planned a hike and picnic road for Saturday. The group will leave the SUB at 12:15. All students interested must sign up in room 122, SUB, by noon today. Fee is 50 cents.

Music Room Is Open

The SUB music room will be open Monday through Friday from 12-2:30 p.m.
Mrs. Barbara Howarth is the librarian.

Tax Help Offered

Mr. W. W. Kelly will be at the Comptroller's office from Feb. 20-21 to assist the University personnel in filing income tax returns.

ASHLAND THEATRE
815 Euclid Ave. Dial 2-2450
Fri-Sat Feb. 17-18
"PRINCE OF FOXES"
Tyronne Power-Wanda Hendrix
"ROCKY"
Roddy McDowall
Sun-Mon-Tue Feb. 19-20-21
"LADY TAKES A SAILOR"
Jane Wyman-Dennis Morgan
"ABANDONED"
Dennis O'Keefe-Gale Storm
4-DAYS-4
Wed-Thu-Fri-Sat Feb. 22-23-24-25
"JOLSON SINGS AGAIN"
Larry Parks-Barbara Hale
MARCH OF TIME
Cortoon-News



"OH HOppy ST. VALENTINE'S DAY," cried Gloria Fizzle, senior from Mayfield, as Irwin's own Jack "Smiley" Boretic presented her with a little token in the form of candy to help her celebrate Valentine's Day. Gloria must have pretty well summed up the feelings of the St. Valentine's celebrants gathered at the Lambda Chi Formal in the SUB last Saturday night (above). Bob Biedel's Orchestra supplied the music for the occasion.

Design For Living Is Religion Week Theme

"Design for Living" has been chosen as the theme for Religious Emphasis Week, Feb. 27 to March 2. The annual event will include discussion groups, speakers, forums and special meetings in residence units and church young people's groups. Speakers for the week, as announced by Mr. Burt N. Peak, executive secretary of the YMCA, are Rabbi Joseph Rauch, Adath Israel Temple, Louisville; M. Francis Mielich, St. John's Catholic Church, Newport; Mr. Frank Hovi, Christian Scientist, Louisville; the Rev. Ben M. Herber, Zion Evangelical and Reformed Church, Newwood, Ohio; the Rev. T. B. Cowan, Everybody's Church, Lexington; the Rev. George A. Jacobs, Christian Church, Georgetown; and Dr. Arnold B. Cunn, head of the Department of Philosophy and Religion at Centre College, Louisville.

SERVING DAILY AND SUNDAY
The Best Foods In The Right Atmosphere At Popular Prices
The Tropics Restaurant
HIGH AND LIMESTONE

Is your fountain pen a hospital case?
bring it to **JAY'S**
FOR THOROUGH CHECK-UP AND RECONDITIONING

If use, abuse or plain old age has your pen at the point of a breakdown, bring it in to us for thorough overhauling. Trained pen experts will get it back in shape in a hurry and at surprisingly low cost. You'll be delighted with its restored performance and renewed writing pleasure. Stop in today for free inspection.

SPECIAL 10-POINT PEN REPAIR SERVICE

- Complete dismantling
- Thorough cleaning
- New fluid set
- Point smoothed
- Point reset
- Complete polishing
- Pen expertly reassembled
- Thorough testing
- Engraving reset (when possible)
- Refill with Sheaffer's Skrip

Check... **JAY'S**
116 1/2 S. Lime • The Phoenix Bldg.

Free Cigarettes Given For Social Functions

The R. J. Reynolds Company, manufacturers of Camel cigarettes, is now providing sample cigarettes for the social functions of all UK campus organizations.

Each organization will be given Camels once during the spring social season.

The social chairman of each fraternity and sorority will receive request cards for the cigarettes. The cards should be filled out as soon as possible stating the event for which cigarettes are desired. Replies are to be sent to Lee Myers, 1633 S. Limestone Street or to William Muro at the Delta Tau Delta House.

Cosmopolitans Plan International Dinner

The Cosmopolitan Club will sponsor an International Dinner at 6:30 tonight in the Poolhall Room of the Student Union. It was announced by Preben Haugen, president of the organization.

The Reverend C. C. David, a student from Indian at Asbury Seminary, will be the guest speaker.

A menu of dishes from various countries will be served. The program includes a Spanish dance by Elena Rigau of Porto Rico, a piano solo by Gro Tiesen of Norway, and a vocal solo by Ana Rios of Panama.

Marius Labrous, treasurer of the club, will act as toastmaster.

Hospitalized To See Troupers In Action

The Troupers and the Panhellenic Club will present a program at the Eastern State Hospital on Monday, February 27.

The Troupers will be in charge of the entertainment, and the Panhellenics will serve refreshments.

FRAZIERS for Gift Items

On Your Way To Town

4-H'ers Meet Monday

The 4-H club will meet Monday at 7:30 p.m. Guest speaker will be Miss Alice Ward, who last year was a farm exchange student in Denmark.

Miss Ward will tell about her experiences in that country.

All former 4-H'ers and freshmen girls are invited to attend.

Dames Club To Sell Pastries At Market

Home-made pies and cakes just like the kind mother used to make will be sold by the UK Dames Club today from 10 a.m. to 3 p.m. at Lo's Market, at Upper St. and Euclid Ave.

All food to be sold will be made by the Dames Club members. This club is composed of the wives of UK students and is sponsored by the Woman's Club of the University.

Tinker Baggartly To Play At Tuesday Sweater Swing

Tinker Baggartly and his orchestra will play at the Sweater Swing in the SUB Ballroom Tuesday, Feb. 21, from 8-9:45 p.m. No admission will be charged.

24 Hour Service
Tires, Batteries, Brakes
Starter, Lights, Ignition
Phone 2030
Taylor Tire Co.
Incorporated
Vine at 5 Eastern

ONE DAY CLEANING!
(Small Extra Charge)
—DIAL—
2-1340
FOR EFFICIENT PICK-UP AND DELIVERY SERVICE
CASH & CARRY
PANTS 35c
SUITS 65c
TOP-COATS 65c
Kentucky Cleaners
921 South Lime

My cigarette? Camels of course!

WITH SMOKERS WHO KNOW... IT'S

Camels for Mildness

Yes, Camels are SO MILD that in a coast-to-coast test of hundreds of men and women who smoked Camels—and only Camels—for 30 consecutive days, noted throat specialists, making weekly examinations, reported

NOT ONE SINGLE CASE OF THROAT IRRITATION due to smoking CAMELS!

KENTUCKY DIAL 4-6010
NOW SHOWING
RAGING ISLAND RAGING PASSIONS
This is IT!
STROMBOLI
BERGMAN
ROSSELLINI
BEN ALI DIAL 4-4570
On Our Stage 5 BIG ACTS OF VAUDEVILLE PLUS BIG SCREEN HIT!!
S-U-N-D-A-Y
DRAWING ADVENTURE... when your part is your passport... and nobody cares!
WINTERS
CAREY
South Sea SINNER
with MELBA CARTER



MYSTERY OF THE WEEK - Which hunk of feminine pulchritude will be chosen Queen of the Mardi Gras? The judges know. Do you? The choices are shown above. They are, from left to right, Ann Guthrie, Carolyn Carter, Harriet Russell, Agnes Hutchinson, and Sue Reffler. The judges (in the same order) are L. C. Redman, Mrs. Donna Haynes, William P. Welsh, and Mrs. Edward Gaines.

Mardi Gras Queen To Be Announced At Newman Club Dance Friday Night

Finalists in the annual selection of the Mardi Gras Queen and her court have been announced. The five girls will participate in the coronation ceremonies of the Mardi Gras Ball from 8 to 12 o'clock tonight in the Bluegrass Ballroom of the SUB. They are Agnes Hutchinson, Zeta Tau Alpha; Ann Guthrie, Kappa Kappa Gamma; Harriet Russell, Kappa Alpha Theta; Carolyn Carter, Alpha Xi Delta, and Sue Reffler, Jewish Hall.

The Queen of the Ball will be named tonight, and crowned by Prof. Robson D. McIntyre, Rex of the Ball, and students' choice as Most Popular Professor.

The Ball, sponsored by the Newman Club, is continue or semi-formal. Prizes will be given for the most original costumes. The Queen and Rex of the Mardi Gras will receive trophies and other gifts from downtown merchants.

Music and entertainment will be furnished by Bob Bleisid and his Blue and White Orchestra. Tickets are \$1.25 a person, and \$2 a couple. They are on sale at the ticket booth in the Student Union Building. Masked and noise makers will be furnished.

A "highbrow" is a person educated beyond his intelligence.

FRAZIER'S
for
Engineering Supplies
• On Your Way To Town

Now Priced for Any Occasion
Lovely Orchids

Really not from the range of the show's limited orchid growers, these are, more orchids at this special price...

\$3.75 Each

Also a few rare and exclusive hybrid orchids at prices slightly higher.
See sample blooms. Order now.

Michler Florist
417 E. Maxwell
Dial 3-0929

WBKY Plans To Broadcast Founders' Day Programs

By T. J. Clark
In observance of Founders' Day, the Fine Arts Symposium starts the day after tomorrow. That means a week of high velocity stuff, and the mechanisms of the special feature machine at the University Radio Service are being geared for a large load of special programs. So I sat myself down beside a telephone, and after alternately getting the right and wrong numbers, came up with the following particulars.

Sunday afternoon, over WKLEX, the University Chorus and Orchestra will be broadcast at 3 o'clock from Memorial Hall.

Tuesday, over WBKY and WLEX, Music Director Howard Hanson of the Eastman School of Music, University of Rochester, will hold forth on the topic, "The Place of Music in Our Society," from the Gaius Theatre, 8:05 p.m.

Wednesday the Founders' Day activities will be carried by WLEX at 10 a.m., and by WKLEX at 2 p.m. Wednesday evening dramatist and drama critic Walter F. Eaton, Yale professor emeritus in playwrighting and now visiting lecturer at the University of North Carolina, will show "The Place of Drama in Our Society." Broadcast time, 8 p.m., WBKY and WLEX.

Thursday, over the facilities of WBKY and WLEX, Phillip R. Adams, director of the Cincinnati Art Museum, will discuss "The Place of Art in Our Society," 8:05 p.m. On Friday, same time and stations, you will be able to hear the symposium on writing by Kentucky authors.

Saturday afternoon the Louisville Philharmonic Orchestra will perform in Memorial Hall. WKLEX will broadcast the program at 3 o'clock. For all you little kiddies WBKY has finally decided to start a story program. Zell Sharrf's "Story Time"

NUTS
RENFRO VALLEY
NUT HUT
Main And Lime

Coffee-Loving Students!

HAVE YOU TRIED THIS EASIER, BETTER WAY TO ROASTER-FRESH COFFEE?

Next time you know you're going to have to stop up late studying, pick up a jar of Nescafé.

Nothing helps you through long sessions like coffee. And no coffee is easier to make than Nescafé. It's instant. Simply put one teaspoon of Nescafé in a cup, add hot water (preferably boiling), stir.

Good! It's delicious! Nescafé just naturally makes a better cup of coffee, because it always keeps its coffee's fresh flavor until you release it in the cup.

Yes, Nescafé gives you all the flavor and "kick" of pure, freshly roasted, freshly brewed coffee, without the mess and fuss of brewing.

Nescafé is the instant way to pure coffee enjoyment. If you like good coffee—you'll love Nescafé. Keep it on hand for all occasions.

More people drink Nescafé than all other instant coffees!

* Nescafé (instant non-fat) is the exclusive registered trade-mark of the Nestlé Company, Inc. No other instant coffee product which is composed of equal parts of decaffeinated and added (with carbohydrates, vitamins, and minerals) added solely to protect the flavor.

Alumni News THEN and NOW Personalities

1921
Harry W. Farmer, a graduate of Stanford, Ky., High School and UK, has been awarded a citation of merit by the Kentucky Department of Disabled Veterans.

1933
Melbourne Mills, '26, and James S. Frankel, '33, both of Lexington, have joined John J. Curtis, '10, as partners in the firm of Frankel and Curtis, architects and engineers, with offices in the Central Bank Building at Lexington.

1935
L. K. Frankel, '00, Mr. Curtis' former partner, died Nov. 27. The same name will be maintained and its offices will remain in the same building. The two new partners have long been connected with the firm and James Frankel is the son of the late senior partner of the firm.

1936
William Frank Lebus of Cincinnati is vice consul at the American Embassy in Rome. Mr. Lebus is 35 years old and since entering the service in 1920 has been assigned to Puerto Cortez, Aruba, Belize, Seville, Oslo, and Frankfurt.

1944
Barbara Kilpatrick of Lexington has joined the firm of Shackleton as an instructor in piano accordion.

1948
Judge Charles I. Dawson, former University student who received the honorary doctor of laws degree from his alma mater in 1948, has been named industry representative on the board of trustees of the United

Mine Workers welfare and retirement fund. Judge Dawson, whose home is in Louisville, is a former Kentucky attorney-general and once judge of the Kentucky District Federal Court.

1949
Herman Bush, formerly of Winchester, is the coach at Lindsey Wilson Junior College, Columbia, Ky., this year.

W. S. Evans Jr. of Nicholasville has been named general manager of the Breeders Sales Company. A graduate of the University and a veteran of World War II, Mr. Evans joined the company in 1947 as assistant to G. S. Leach who resigned recently.

Edward Frances, formerly of Trigg County, has been named assistant county agent in training for Caldwell County.

Alvina Griffin of Danville is teaching art at Holmes High School in Covington this year. Miss Griffin's father, Bernard, and mother, the former Madelle Van Cleave, both attended the University of Kentucky, and her sister is at present a sophomore in the College of Agriculture and Home Economics.

Marilyn Morris of New Carlisle, Ohio, has joined the staff of the Lexington YWCA as Y-Teen program director.

Dr. Irwin T. Sanders, head of the Department of Zoology, is serving as chief consultant for a community "Water, there's an insect in my soup!" Replied the waiter: "Maybe it's one of those Vitamin Bees!"

Social Room, SUB, Freshman Club, 6:15 p.m.
Y Lounge, SUB, Upperclass Y, 7 p.m.
SUB, Newman Club, 7:30 p.m.
Ball Room, SUB, Sweater Swing, 8 p.m.
Wednesday
Ball Room, SUB, Hall dance class, 6:45.

Faculty Personals

Miss Laura Martin
The H. W. Wilson Company has announced publication of the 1950 revised edition of "Magazines for School Libraries" written by Miss Laura K. Martin, associate professor of the Department of Library Science.

Miss Martin spoke to the Teen-Age Literary Club of the Laura Carroll Branch of the Lexington Public Library last Wednesday on "The Enjoyment of Reading."

Dr. J. A. Williams, Leonard Moore, Frank Dicker, Instructor H. P. Adams, and Director Lyman V. Glinger of the College of Education will attend the American Association of School Administrators and the American Association of Colleges for Teacher Education conferences in Atlantic City Feb. 22 to March 1.

Raymond Barnhart
An exhibition of paintings by Raymond Barnhart, assistant professor of art, opened Friday at the Evansville Public Museum.

New painting materials, which are expected to prove more permanent than the older ones, used in several of his pictures are vinylite, silicate, and pyroxin lacquer.

Prof. Barnhart began experiments with these materials last year while on sabbatical leave in Mexico.

Dr. Sanders
Dr. Irwin T. Sanders, head of the Department of Zoology, is serving as chief consultant for a community "Water, there's an insect in my soup!" Replied the waiter: "Maybe it's one of those Vitamin Bees!"

• On Your Way To Town

development workshop being held this week in Plainfield, Vt.
Dr. Sanders will return to Lexington via Washington, D. C., where he will confer with persons just returned from Europe concerning ecological conditions in the Balkans.

Dr. Horlacher
Dr. L. J. Horlacher, assistant dean of the College of Agriculture and Home Economics, will attend a meeting of the Southern Section of the Deans of Agriculture to be held Thursday and Friday at the University of Florida.

The group will discuss problems of instructing in agriculture.

Your Pipe's Best Friend Is HEINE'S BLEND . . .
The Smoking Tobacco With A D.M.S.* DEGREE!
* Definitely Milder Smoking

FRAZIER'S
for
PERSONAL STAMPS
MADE TO ORDER
• On Your Way To Town

Eyes Examined Glasses Fitted
DR. H. H. FINE
OPTOMETRIST
124 North Lime Dial3-3888
Complete Optical Service
Prescriptions Filled

This Is It!
GRAND OPENING
Friday Night, Feb. 17th
+ DAVE PARRY +
His Piano and his ORCHESTRA
Veterans Foreign Wars
Henry A. Lucas Post 1885
226 1/2 E. MAIN ST.
—Huge Floor Show—
called
"YAK-YAK-YAK"
—Starring—
Mat Amato
Most Unusual Comedy Act Ever Presented At The Club . . . A Roar From Start To Finish . . .
The Mel-Tones
A Fine U. of K. Singing Group
Plus 2 Other Acts
Show Time 9:00 Members and Guests Welcome Come Early For Seats

meeting of the Southern Section of the Deans of Agriculture to be held Thursday and Friday at the University of Florida.

The group will discuss problems of instructing in agriculture.

Your Pipe's Best Friend Is HEINE'S BLEND . . .
The Smoking Tobacco With A D.M.S.* DEGREE!
* Definitely Milder Smoking



FRAZIER'S
for
Games
• On Your Way To Town

Kampus Kernels
Today
Room 205, SUB, Dutch Lunch Club, 12 noon.
Room 206, SUB, Basketball Team, dinner, 6 p.m.
Music Room, SUB, Chi Omega reception, 4:30-6 p.m.
Room, SUB, Mardi Gras Dinner, 8-12 p.m.
Football Room, SUB, Cosmopolitan Club, 1947.
Sunday
Disciples Student Fellowship, Central Christian Church, supper, lecture and recreation; "Sense and Nonsense About Face."
Tuesday
Room 206, SUB, Phalanx, 12 noon.

Expert . . .
Watch and Jewelry Repairing
• All Work Guaranteed •
Tiny's Jewelry Shop
109 N. Lime
"Twenty steps from Main"

Go WES Young Man... Go WES!
Delicious Foods
SERVING UNTIL MIDNIGHT
WES INC.
140 W. Short St.

Cast Your Vote For Good Grooming
--- by sending your clothes to CROPPER'S
It's easy to keep "fit" in your suit with our fabric-deep cleaning and stay-put press.

CROPPER'S Laundry-Dry Cleaning
• 329 South Lime • 241 E. Short
• 803 Euclid • 105 Walton

You Are Invited To a UNIVERSITY REVIVAL
UK Students Preaching

BAPTIST STUDENT CENTER
371 So. Lime
February 20 thru 25
7:30 p. m.

Kentucky Basketeers: Bobby Watson

Lieable and reliable. Those words just about summarize how most Kentucky fans feel about Bobby Watson, the sophomore guard from Owensboro, who has helped so much this season in aiding the Kentucky Wildcats to fashion their brilliant record.

Certainly here is one of the best liked Kentucky players on the team today. He is liked and admired not only by Kentucky students, but also by the members of his own team. The members of last year's freshman team proved how they felt about Bobby when they named him captain of the undefeated Kittens.

And about his reliability. Bobby has shown this quality time and time again this season. The most recent occurrence was Monday night when the Cats had to battle almost to the wire to stop Alabama.

Early in the game when the Crimson Tide was throwing them in from all corners of the court and things were getting plenty rough, Bobby potted a couple of four shots which kept the Cats knocking on the door.

Kentucky students also remember how Bobby hit for 30 points against a tough Arkansas team to help turn the tide in that game. Other high notes for the Owensboro lad this season were the 17 points he connected with against DePaul in the Cats' excellent showing at Chicago and the 15 he hit against Georgia in a losing cause down at Athens last month.

Bobby's record through the Alabama game of Monday reads a total of 166 points amassed on 63 field goals and 46 free throws in 22 games Kentucky has played.

Another point about Bobby's floor play is the fact that he has only been guilty of 23 personal fouls in contests to date which is by far the lowest of any Kentucky regular.

Bobby is one of the fastest men on the Kentucky team today. He breaks down the floor at the head of the Wildcats fast break at tremendous speed, and also breaks through for the basket at a lightning-like pace.

Good on Set Shots
Bobby's best shot is that long one which he unleashes from about 25 to 30 feet. He can hit them from just about anywhere in the back court and when he once starts

to connect, that's all. It was this shot that kept Kentucky in the Alabama game in the early stages.

Playing on last year's undefeated freshman quintet, Bobby displayed a brilliant floor game which stamped him with future greatness in addition to scoring 114 points to be second highest scorer. His shooting percentage from the field was 37.5 which would place him on anybody's team.

Born in Central City

Bobby was born March 22, 1930 in Central City, Ky., and so is only about one month away from his twentieth birthday.

Watson Hits 17 Points

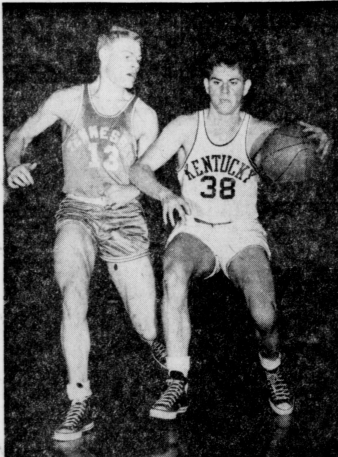
Bobby Watson added 17 points to his total and displayed another fine floor game against Ole Miss Wednesday night as the Cats won 99-50. Bobby sank five fielders in a row late in the first half and added seven free throws in nine attempts to boost his point total to 183 for the year.

Bobby's record through the Alabama game of Monday reads a total of 166 points amassed on 63 field goals and 46 free throws in 22 games Kentucky has played.

Another point about Bobby's floor play is the fact that he has only been guilty of 23 personal fouls in contests to date which is by far the lowest of any Kentucky regular.

Bobby is one of the fastest men on the Kentucky team today. He breaks down the floor at the head of the Wildcats fast break at tremendous speed, and also breaks through for the basket at a lightning-like pace.

Good on Set Shots
Bobby's best shot is that long one which he unleashes from about 25 to 30 feet. He can hit them from just about anywhere in the back court and when he once starts



BOBBY WATSON, the Cats' starting sophomore guard, is shown above protecting the ball from Tennessee's scrappy Forward Don Graham in the scrap here last Saturday. Watson, a 5-10 lad from Owensboro, is the only UK cager under the six-foot mark but has been very valuable this season. Incidentally, Kentucky clipped the Vols, 75-52, with Watson scoring 11 of the points.

Big Bill Leads SEC Scorers

When it comes to scoring, Bill Epley is head, shoulders, and chest above them all. He's way out in front of Southeastern scorers with 419 points, an average of 18.2 per game. He has connected on 24.3 percent of his shots taken from the field and has hit 73 percent of his free throws.

Jim Linn, still hitting the basket at a 41 percent clip is third among SEC scorers with 222 points, an average of 12.1 per game. He is hitting about like Epley now, 72 percent for free throws.

Walk Hirsch is third high for the Wildcats with 229 points. He is way out in front in assists, having contributed directly to teammate scores with many quick passes. Leggie Bobby Watson has racked up 183 points, hitting mostly from far out on the court on 31 percent of his shots.

30 percent of his shots in scoring 102 points. Shelby Linville has tallied only 96 times but has averaged 6.9 points a game. He has been a big man under the backboards since joining the Cat lineup this semester.

Guy Strong has probably one of the best averages in the country; he swishes the nets every other time he shoots, scoring 84 points during the limited time he has played.

WATCH AND JEWELRY REPAIRING
At Reasonable Prices - Our Work Guaranteed
Lexington Jewelry & Luggage
143 S. Lime Dial 2-5125

COLONEL Of The Week



Colonel of the Week for this week is Jerry Claiborne, Education senior from Hopkinsville.

Jerry has been outstanding on the campus as a leader, a scholar, and an athlete.

He is a member of Omicron Delta Kappa, Lamp and Cross, and Scalboard and Blade. He is also president and a charter member of the ROTC Society, and is president of the K Club. He was the recipient of the citizenship award in his junior ROTC class.

Jerry was tennis champion and most outstanding athlete at the 1948 summer ROTC camp.

For these high achievements at the University, the Cedar Village invites Jerry to enjoy any two of its delicious treats.

Committee:
Bob Cox, chairman _____ Lambda Chi Alpha
Neil Blair _____ Delta Zeta
Earl Conn _____ Independent

Serving Daily Except Sat. Noon
SERVING HOURS
DAILY
11:30 to 1:30 - 5:30 to 8:00
SUNDAY
11:30 to 2:00 - 5:00 to 8:00

CEDAR VILLAGE RESTAURANT

304 S. LIME

Kittens Gain Revenge In Win Over Wesleyan; Top Pikeville

By Bob Graham

Kentucky's Kittens avenged their only loss this season by shelling Kentucky Wesleyan's Baby Panthers, 33-20, in Alumni gym Monday night. Wesleyan won the first contest, 56-55.

The fresh were paled by the spectacular ball handling of Cliff Hagan and the accurate shooting of Frank Ramsey. They were not to be denied as they started off on top and stayed there all the way.

Ramsey, usually a forward, started the game at guard in place of the injured Lindie Castle, and poured in 28 points to top the Cat scorers. Hagan added 23, and Ches Riddle, playing his best game since dominating the Blue and White, contributed 15 markers and a brilliant floor game.

The Panthers had their star, 6-6, in playmaker Bill Harrell, who led his team in scoring with 19 points in other outstanding men for the Purple were H. Daniels, a 6'5" long-shot artist who sank six of his specialties for 12 points, and Bill Williams, a diminutive guard, who tabbed 11.

The line-up:
Kentucky (82) (60) Ky. Wesleyan Price (16) F (4) Carlin Faler's (5) F (6) Rogers Hagan (22) C (4) Shearer Pikeville (9) G (19) Harrell Ramsey (28) G (11) Williams Sub: Ky. Riddle (15), Baltzell, Eric Ky. Wesleyan: H. Daniels (12), Blake (2), Westerfield, D. Daniel, Keny (2).

as they hit 46% of their attempts. They wound up the evening with a 34.3 average by hitting 33 of the 96 shots they took at the basket.

Every man on the team saw action, and everyone broke into the scoring column. The team was aggressive on the boards with big Lou Tsiropoulos controlling the rebounds from the Pikeville basket, and Hagan tipping in buckets on the Kentucky goal.

Best performer for Pikeville was their watch-charm sized guard, Charles Porter, who chalked up 16 points.

The line-up:
Kentucky (82) (60) Ky. Wesleyan Price (16) F (4) Carlin Faler's (5) F (6) Rogers Hagan (22) C (4) Shearer Pikeville (9) G (19) Harrell Ramsey (28) G (11) Williams Sub: Ky. Riddle (15), Baltzell, Eric Ky. Wesleyan: H. Daniels (12), Blake (2), Westerfield, D. Daniel, Keny (2).

Beat Pikeville, 92-42. Last Saturday night the Freshmen romped to their seventh win of the season by vanquishing Pikeville Junior College, 92-42.

Leading the scorers was Cliff Hagan with 26 points, his largest point production since joining the squad in January. By Tuesday of this week, he had scored 88 points in five games for a 17.6 per game average.

Next in line was Dwight Price with 17 markers. Price has seen most of his service as a reserve, but has shown unusual scoring ability in chalking up 40 points in nine games or a 10-point average.

The Kittens were particularly sharp on offense in the first half

Pikrone (9) G (6) Booth
Subs: Ky. Price (17), Pyle (4), Waggoner (3), Riddle (8), Baltzell (5), Pikeville: Conley, Stevenson (1), Snyder, Blankenship (3), Kirk, Harmon (1).

Just a few of the many articles that you can wash and dry in less than an hour, ready to take home and use: Wearing Apparel, Rayons and Silks, Shop Bags, Curtains, Slip Covers, Baby Clothes, Blankets, Towels and Sheets.

UP TO 9 lbs. SOAP FREE Washed - Triple-Rinsed - Damp Dried Additional Charge for Drying 35c

YOUR NEIGHBORHOOD Self Service Laundry Ashland - Chevy-Chase Shopping Center 877 E. High St. DIAL • 3-1055

Monday - 8 to 5 Tuesday - 8 to 5-6 to 9 Wednesday - 8 to 12 noon Thursday - 8 to 5-6 to 9 Friday - 8 to 5 Saturday - 9 to 5

PROVE TO YOURSELF

NO CIGARETTE HANGOVER

when you smoke PHILIP MORRIS!

HERE'S ALL YOU DO!

In just a few seconds you can prove PHILIP MORRIS IS DEFINITELY LESS IRRITATING than the brand you're now smoking!

...light up a PHILIP MORRIS

2... light up your present brand

Do exactly the same thing - DON'T INHALE. Notice that bit, that's all! Quite a difference from PHILIP MORRIS!

NOW YOU KNOW WHY YOU SHOULD BE SMOKING PHILIP MORRIS!

Everybody talks about PLEASURE, but only ONE cigarette has really done something about it.

That cigarette is PHILIP MORRIS!

Remember: less irritation means more pleasure. And PHILIP MORRIS is the ONE cigarette proved definitely less irritating, definitely milder, than any other leading brand.

NO OTHER CIGARETTE CAN MAKE THAT STATEMENT.

YOU'LL BE GLAD TOMORROW - YOU SMOKED PHILIP MORRIS TODAY!

CALL FOR PHILIP MORRIS

TIRED OF THE GRIND? YOU'LL RELAX WHEN YOU FIND...

HEINE'S BLEND
SQUALID TOBACCO CO., 45 FRANKLIN S. E., CANTON, OHIO

HART'S offers 7 HOUR SERVICE for dry cleaning and pressing... and for your laundry too.

When you're in "pressing" need of a robot, try

Hart's Bachelor Laundry

549 South Limestone Across From The Little Commons

NO EXTRA CHARGE FOR 7 HOUR SERVICE

A & E SUPPLY CO.
Engineers, Architects, Drafting & School Supplies
Drawing Instruments and Boards

DISCOUNT TO STUDENTS

389 Rose St. Phone 4-3358
Rose and Euclid

FRIDAY FEB. 24th

PERSONAL SKETCH HENDERSON his piano and HIS ORCHESTRA

Advance Sale-Reservations Bradley Drug Fraternity Groups Call 2-4946

Joyland Casino
TONIGHT - TOMORROW
BILL JONES and his Modern Symphonette

Joyland Casino
TONIGHT - TOMORROW
BILL JONES and his Modern Symphonette

Cats Increase Home Win Streak To 81 With Three SEC Triumphs

The Big Blue added three more victories to their long home winning streak the past week and have now captured 81 consecutive contests in the 27-year-old Alumni Gym.

By beating Tech tomorrow night, Xavier next Thursday and Vanderbilt next Saturday here on the local court, the Cats will move out of Alumni Gym into the new Coliseum having won 84 straight games very notably an all-time collegiate record.

The Wildcats tie into Tech Saturday with a Conference record of 9-2.

UK 90, Ole Miss 59
Kentucky notched its ninth SEC win Wednesday night when the Cats took Ole Miss into camp, 90-50, at Alumni Gym. Despite the 40-point win, the Cats didn't look too impressive in gaining the victory.

The game was one of those wild affairs with both teams throwing the ball away on numerous occasions. However, there were a couple of bright spots in the Kentucky picture—Bobby Watson and Jim Line paced the attack with 17 apiece while reserves Guy Strong and Read Morgan ledged goal. Capt. Dale Barnstabile scored four baskets in 19 minutes in the last half, hitting on all four of his shots.

Bill Spivey couldn't get going in the first half but scored 12 points in the final semester.

UK led 23-8 with 10 minutes gone in the first half and went into the dressing room holding a 29-19 lead at the halftime.

UK hit 35 field goals and added 14 out of 20 free throws. Mississippi connected on only 20 shots from the field and got only 10 out of 25 from the charity stripe.

Kentucky (80) (50) Ole Miss Line (17) F (6) Childers Hirsch (12) F (5) Reeves Spivey (12) C (6) Smith Watson (17) G (6) Grohble Pearson (1) G (5) Mehrentz Substitutions: Kentucky—Strong (6), Linnell (6), Barnstabile (6), Townes (1), King (4), Morgan (4), and Layne. Ole Miss—Reeves (5), Marshall (4), Cook (4), and Puckett (2).

Kentucky 79, Vals 57
Kentucky won the game students wanted, most of all last Saturday night when they overran the University of Tennessee, 79-52, at Alumni Gym. It was the Cats 79th straight win at home.

Tennessee had stopped Kentucky at Knoxville 60-53 earlier in the season for the Cats first SEC defeat since 1945 and everyone wanted revenge. It had also been Tennessee who defeated the Cats in 52 minutes at Knoxville.

Big Bill Spivey paved the way in the game with a total of 34 points

and six more; Bill Spivey scored on a quick pass from Pearson just as the half ended to put Kentucky ahead, 32-21.

Spivey, high point man with 29 was undoubtedly the most outstanding man on the floor. He put Kentucky ahead six times in the second half and did most of Kentucky's rebounding.

The teams have been divided into two groups—fraternities and independents—and these groups subdivided into divisions. There are three divisions in the fraternity bracket and five in the independent bracket.

The three teams with the best win-loss record in each division or a total of 24 teams, will be eligible for the tournament to be held at the end of the round-robin.

Independents
Teams entering the independent division include last year's champs, Breckinridge Hall; the runner-up team, K-Club; Kinlead Hall, Basketeers, Clifton Cats, Homotowers, World Walkers, Yankees, Northern Kentucky Turtles, UK Vets, Dairy Club, B.S.T. Colts, Madfis, Newman Club, Bulldogs, Podunk and Electrical Engineers.

Fraternity
The fraternities division are Phi Kappa Tau, Sigma Chi, Alpha Tau Omega, Sigma Alpha Epsilon, Alpha Sigma Phi, Psi Kappa Alpha, Lambda Chi Alpha, Phi Sigma Kappa, Delta Tau Delta, and Kappa Sigma.

IM Rules
1. Two forfeitures eliminate a team. A team of five men must be on the floor ready to play five (5) minutes after scheduled playing time.
2. Tennis shoes are required on basketball court.
3. Official High School basketball rules shall apply except that the halves shall be fifteen minutes and clock will not stop until last 3 minutes of game.
4. Referee's decision will be final on all games on the playing floor.
5. Each team will furnish one (1) man each game they play to keep score and time.
6. To qualify for Elimination Tournament:
(a) Three (3) teams from each division with highest number of wins during the Round Robin Tournament.

7. Teams using U-High Gym must enter through the South Side Entrance.
8. All teams will be limited to 15 men after your second game. New members can be drafted who have not participated with other teams in this Tournament up until second game.
9. Team managers will be responsible to see that:

(a) Men who have earned a senior college basketball letter do not play.
(b) Men who earned basketball numerals last year do not play.
(c) Men who are on varsity or Freshmen teams or were on these teams after Christmas do not play.
(d) Fraternity pledges or active on probation will be ineligible.
(e) Men who earned junior college letters last season will be ineligible.
(f) Part time students will be ineligible.
(g) Team managers must check rosters to see that only 15 men are listed by and of second game.

SHORT SHOTS—Kentucky set a record of 107 field goal attempts. Spivey's 29 showed him well up on the SEC point parade, almost 150 points above his closest rival. . . and Shelby Linnell did his usual fine job on the back boards.

Kentucky (77) (57) Alabama Line (13) F (6) Ivey Hirsch (13) F (2) Moore Spivey (29) C (4) Sullivan Watson (5) G (5) Hamner Barnstabile (6) G (9) McKenzie Substitutions: Kentucky—Linnell (7), Pearson (7), and Whittaker (3). Alabama—Dean (17), Schlicker (12), and Vrotos.

Fratt Teams
In the fraternity division are Phi Kappa Tau, Sigma Chi, Alpha Tau Omega, Sigma Alpha Epsilon, Alpha Sigma Phi, Psi Kappa Alpha, Lambda Chi Alpha, Phi Sigma Kappa, Delta Tau Delta, and Kappa Sigma.

Fratt Teams
In the fraternity division are Phi Kappa Tau, Sigma Chi, Alpha Tau Omega, Sigma Alpha Epsilon, Alpha Sigma Phi, Psi Kappa Alpha, Lambda Chi Alpha, Phi Sigma Kappa, Delta Tau Delta, and Kappa Sigma.

Kittens Meet Vandy Next
The Kittens, winners of four games in five days during the past week, make their twelfth start of the season when they meet the Vanderbilt freshmen at Owensboro tomorrow night.

Next home game for the fresh is Feb. 22, when they meet the Xavier yearlings in a return game in Alumni gym. Game time will be 6 p.m.

the margin in the second period. The score at the two-minute mark was 38-27.

High scorers for the Cats were Linnell Castle and Dick Pikrone with 15 each. Frank Ramsey added 14.

Best for the Sue Bennett cagers was Bert Cox, a member of last year's Kentucky freshman team. He had 10 points before fouling out in the final minutes.

The line-up:
Kentucky (71) (27) Sue Bennett Tisor's (10) F (3) Anders Ramsey (14) F (9) Parsley Hagan (7) C (8) Johnson Castle (15) G (10) Cox Pikrone (15) G (3) Dixon Sub: Ky: Price (8), Baltzell (2), Frye, Riddle, Bennett; Hodges (4), Davis, Campbell, Moore.

Intramural Sports

By Bob Gorham and Lewis Donohew
Fifty-four teams representing 19 fraternities and 25 independent organizations, have entered the intramural basketball elimination round-robin, according to Director Bill McCubbin.

The teams have been divided into two groups—fraternities and independents—and these groups subdivided into divisions. There are three divisions in the fraternity bracket and five in the independent bracket.

The three teams with the best win-loss record in each division or a total of 24 teams, will be eligible for the tournament to be held at the end of the round-robin.

Independents
Teams entering the independent division include last year's champs, Breckinridge Hall; the runner-up team, K-Club; Kinlead Hall, Basketeers, Clifton Cats, Homotowers, World Walkers, Yankees, Northern Kentucky Turtles, UK Vets, Dairy Club, B.S.T. Colts, Madfis, Newman Club, Bulldogs, Podunk and Electrical Engineers.

Fraternity
The fraternities division are Phi Kappa Tau, Sigma Chi, Alpha Tau Omega, Sigma Alpha Epsilon, Alpha Sigma Phi, Psi Kappa Alpha, Lambda Chi Alpha, Phi Sigma Kappa, Delta Tau Delta, and Kappa Sigma.

IM Rules
1. Two forfeitures eliminate a team. A team of five men must be on the floor ready to play five (5) minutes after scheduled playing time.
2. Tennis shoes are required on basketball court.
3. Official High School basketball rules shall apply except that the halves shall be fifteen minutes and clock will not stop until last 3 minutes of game.
4. Referee's decision will be final on all games on the playing floor.
5. Each team will furnish one (1) man each game they play to keep score and time.
6. To qualify for Elimination Tournament:
(a) Three (3) teams from each division with highest number of wins during the Round Robin Tournament.

7. Teams using U-High Gym must enter through the South Side Entrance.
8. All teams will be limited to 15 men after your second game. New members can be drafted who have not participated with other teams in this Tournament up until second game.
9. Team managers will be responsible to see that:

(a) Men who have earned a senior college basketball letter do not play.
(b) Men who earned basketball numerals last year do not play.
(c) Men who are on Varsity or Freshmen teams or were on these teams after Christmas do not play.
(d) Fraternity pledges or active on probation will be ineligible.
(e) Men who earned junior college letters last season will be ineligible.
(f) Part time students will be ineligible.
(g) Team managers must check rosters to see that only 15 men are listed by and of second game.

SHORT SHOTS—Kentucky set a record of 107 field goal attempts. Spivey's 29 showed him well up on the SEC point parade, almost 150 points above his closest rival. . . and Shelby Linnell did his usual fine job on the back boards.

Kentucky (77) (57) Alabama Line (13) F (6) Ivey Hirsch (13) F (2) Moore Spivey (29) C (4) Sullivan Watson (5) G (5) Hamner Barnstabile (6) G (9) McKenzie Substitutions: Kentucky—Linnell (7), Pearson (7), and Whittaker (3). Alabama—Dean (17), Schlicker (12), and Vrotos.

Fratt Teams
In the fraternity division are Phi Kappa Tau, Sigma Chi, Alpha Tau Omega, Sigma Alpha Epsilon, Alpha Sigma Phi, Psi Kappa Alpha, Lambda Chi Alpha, Phi Sigma Kappa, Delta Tau Delta, and Kappa Sigma.

Fratt Teams
In the fraternity division are Phi Kappa Tau, Sigma Chi, Alpha Tau Omega, Sigma Alpha Epsilon, Alpha Sigma Phi, Psi Kappa Alpha, Lambda Chi Alpha, Phi Sigma Kappa, Delta Tau Delta, and Kappa Sigma.

Kittens Meet Vandy Next
The Kittens, winners of four games in five days during the past week, make their twelfth start of the season when they meet the Vanderbilt freshmen at Owensboro tomorrow night.

Next home game for the fresh is Feb. 22, when they meet the Xavier yearlings in a return game in Alumni gym. Game time will be 6 p.m.

the margin in the second period. The score at the two-minute mark was 38-27.

High scorers for the Cats were Linnell Castle and Dick Pikrone with 15 each. Frank Ramsey added 14.

Best for the Sue Bennett cagers was Bert Cox, a member of last year's Kentucky freshman team. He had 10 points before fouling out in the final minutes.

The line-up:
Kentucky (71) (27) Sue Bennett Tisor's (10) F (3) Anders Ramsey (14) F (9) Parsley Hagan (7) C (8) Johnson Castle (15) G (10) Cox Pikrone (15) G (3) Dixon Sub: Ky: Price (8), Baltzell (2), Frye, Riddle, Bennett; Hodges (4), Davis, Campbell, Moore.

(a) Men who have earned a senior college basketball letter do not play.
(b) Men who earned basketball numerals last year do not play.
(c) Men who are on Varsity or Freshmen teams or were on these teams after Christmas do not play.
(d) Fraternity pledges or active on probation will be ineligible.
(e) Men who earned junior college letters last season will be ineligible.
(f) Part time students will be ineligible.
(g) Team managers must check rosters to see that only 15 men are listed by and of second game.

SHORT SHOTS—Kentucky set a record of 107 field goal attempts. Spivey's 29 showed him well up on the SEC point parade, almost 150 points above his closest rival. . . and Shelby Linnell did his usual fine job on the back boards.

Kentucky (77) (57) Alabama Line (13) F (6) Ivey Hirsch (13) F (2) Moore Spivey (29) C (4) Sullivan Watson (5) G (5) Hamner Barnstabile (6) G (9) McKenzie Substitutions: Kentucky—Linnell (7), Pearson (7), and Whittaker (3). Alabama—Dean (17), Schlicker (12), and Vrotos.

Fratt Teams
In the fraternity division are Phi Kappa Tau, Sigma Chi, Alpha Tau Omega, Sigma Alpha Epsilon, Alpha Sigma Phi, Psi Kappa Alpha, Lambda Chi Alpha, Phi Sigma Kappa, Delta Tau Delta, and Kappa Sigma.

Fratt Teams
In the fraternity division are Phi Kappa Tau, Sigma Chi, Alpha Tau Omega, Sigma Alpha Epsilon, Alpha Sigma Phi, Psi Kappa Alpha, Lambda Chi Alpha, Phi Sigma Kappa, Delta Tau Delta, and Kappa Sigma.

Kittens Meet Vandy Next
The Kittens, winners of four games in five days during the past week, make their twelfth start of the season when they meet the Vanderbilt freshmen at Owensboro tomorrow night.

Next home game for the fresh is Feb. 22, when they meet the Xavier yearlings in a return game in Alumni gym. Game time will be 6 p.m.

the margin in the second period. The score at the two-minute mark was 38-27.

High scorers for the Cats were Linnell Castle and Dick Pikrone with 15 each. Frank Ramsey added 14.

Best for the Sue Bennett cagers was Bert Cox, a member of last year's Kentucky freshman team. He had 10 points before fouling out in the final minutes.

The line-up:
Kentucky (71) (27) Sue Bennett Tisor's (10) F (3) Anders Ramsey (14) F (9) Parsley Hagan (7) C (8) Johnson Castle (15) G (10) Cox Pikrone (15) G (3) Dixon Sub: Ky: Price (8), Baltzell (2), Frye, Riddle, Bennett; Hodges (4), Davis, Campbell, Moore.

Hagan's 38 Sets Fresh Net Mark

By Bob Gorham
With big Cliff Hagan pouring in 38 points, the Kittens won their ninth game of the season by defeating Campbellville Junior College, 77-63, Tuesday night.

Hagan ripped the nets for 18 field goals and six out of eight free throw attempts to set a record for a freshman player. Coaches Adolph Rupp and Harry Lancaster said that "as far as is known, no other freshman has ever topped this mark."

Campbellville jumped into an early lead and gave the frosh a real fight all the way. The count was tied at 15-15, 17-17 and 19-19 before the Cats took a 21-20 lead and stayed on top the rest of the way. The halftime score was 41-27.

The teams battled on even terms in the second half, each team collecting 36 points, but the Tigers were too far in arrears to press the Blue and White.

The Kittens hit for 32.6 percent from the field and caged 11 of 23 free tosses. Campbellville had a 29.1 average, and converted 17 of 25 from the fifteen-foot mark.

Kentucky (77) (63) Campbellville Tisor's (12) F (11) Meyers Ramsey (15) F (10) Gilvin Hagan (38) C (9) Green Riddle (0) G (4) Wise Pikrone (9) G (12) Morrison Sub: Ky: Price, Castle (3), Campbellville: Praley, C. Brown, Best (10), J. Brown (9).

Frosh Fencers
Drop Opener 7-5
The first freshman fencing team in the history of the University last its opening match to Tri-Cities Amateur Fencers seven bouts to five bouts. Tri-Cities made up of fencers from University of Louisville, Louisville YMCA, and Jeffersonville, Ind., had a tremendous advantage in experience over the frosh swordsmen.

For the freshman Bill Seiler, acting captain, won three and lost one; Paul Wright won one and lost two; Ted Dunn won one and lost two.

25 from the fifteen-foot mark. Kentucky (77) (63) Campbellville Tisor's (12) F (11) Meyers Ramsey (15) F (10) Gilvin Hagan (38) C (9) Green Riddle (0) G (4) Wise Pikrone (9) G (12) Morrison Sub: Ky: Price, Castle (3), Campbellville: Praley, C. Brown, Best (10), J. Brown (9).

Frosh Fencers
Drop Opener 7-5
The first freshman fencing team in the history of the University last its opening match to Tri-Cities Amateur Fencers seven bouts to five bouts. Tri-Cities made up of fencers from University of Louisville, Louisville YMCA, and Jeffersonville, Ind., had a tremendous advantage in experience over the frosh swordsmen.

For the freshman Bill Seiler, acting captain, won three and lost one; Paul Wright won one and lost two; Ted Dunn won one and lost two.

the margin in the second period. The score at the two-minute mark was 38-27.

High scorers for the Cats were Linnell Castle and Dick Pikrone with 15 each. Frank Ramsey added 14.

Best for the Sue Bennett cagers was Bert Cox, a member of last year's Kentucky freshman team. He had 10 points before fouling out in the final minutes.

The line-up:
Kentucky (71) (27) Sue Bennett Tisor's (10) F (3) Anders Ramsey (14) F (9) Parsley Hagan (7) C (8) Johnson Castle (15) G (10) Cox Pikrone (15) G (3) Dixon Sub: Ky: Price (8), Baltzell (2), Frye, Riddle, Bennett; Hodges (4), Davis, Campbell, Moore.

the margin in the second period. The score at the two-minute mark was 38-27.

High scorers for the Cats were Linnell Castle and Dick Pikrone with 15 each. Frank Ramsey added 14.

Best for the Sue Bennett cagers was Bert Cox, a member of last year's Kentucky freshman team. He had 10 points before fouling out in the final minutes.

The line-up:
Kentucky (71) (27) Sue Bennett Tisor's (10) F (3) Anders Ramsey (14) F (9) Parsley Hagan (7) C (8) Johnson Castle (15) G (10) Cox Pikrone (15) G (3) Dixon Sub: Ky: Price (8), Baltzell (2), Frye, Riddle, Bennett; Hodges (4), Davis, Campbell, Moore.

the margin in the second period. The score at the two-minute mark was 38-27.

High scorers for the Cats were Linnell Castle and Dick Pikrone with 15 each. Frank Ramsey added 14.

Best for the Sue Bennett cagers was Bert Cox, a member of last year's Kentucky freshman team. He had 10 points before fouling out in the final minutes.

The line-up:
Kentucky (71) (27) Sue Bennett Tisor's (10) F (3) Anders Ramsey (14) F (9) Parsley Hagan (7) C (8) Johnson Castle (15) G (10) Cox Pikrone (15) G (3) Dixon Sub: Ky: Price (8), Baltzell (2), Frye, Riddle, Bennett; Hodges (4), Davis, Campbell, Moore.

the margin in the second period. The score at the two-minute mark was 38-27.

High scorers for the Cats were Linnell Castle and Dick Pikrone with 15 each. Frank Ramsey added 14.

Best for the Sue Bennett cagers was Bert Cox, a member of last year's Kentucky freshman team. He had 10 points before fouling out in the final minutes.

The line-up:
Kentucky (71) (27) Sue Bennett Tisor's (10) F (3) Anders Ramsey (14) F (9) Parsley Hagan (7) C (8) Johnson Castle (15) G (10) Cox Pikrone (15) G (3) Dixon Sub: Ky: Price (8), Baltzell (2), Frye, Riddle, Bennett; Hodges (4), Davis, Campbell, Moore.

the margin in the second period. The score at the two-minute mark was 38-27.

High scorers for the Cats were Linnell Castle and Dick Pikrone with 15 each. Frank Ramsey added 14.

Best for the Sue Bennett cagers was Bert Cox, a member of last year's Kentucky freshman team. He had 10 points before fouling out in the final minutes.

The line-up:
Kentucky (71) (27) Sue Bennett Tisor's (10) F (3) Anders Ramsey (14) F (9) Parsley Hagan (7) C (8) Johnson Castle (15) G (10) Cox Pikrone (15) G (3) Dixon Sub: Ky: Price (8), Baltzell (2), Frye, Riddle, Bennett; Hodges (4), Davis, Campbell, Moore.

Eating At It's Best
Delicious Bar-B-Q
Appetizing Plate Lunches
A Wide Variety of Tasty Sandwiches
RITZ COFFEE SHOP
159 South Lime

"I Met The Nicest Man Today"
Oh . . . he wasn't particularly handsome
BUT . . .
Whew! was he NEAT . . .

BECKER'S
Ensures you of expert shirt laundry . . . You'll really be pleased with the glossy finish . . .
Your shirt will look as NEW as the day you bought it.
REGULAR 3-DAY SERVICE
or
SAME-DAY-SERVICE
In case of emergency at slight extra cost.
TALK ABOUT A SPIC AND SPAN SHIRT . . .
This Fellow certainly had one . . .
A well-laundered shirt is really an asset . . . In my estimation . . .
BECKER
Launderers—Cleaners
Main Plant—Lime At Euclid—4th and Broadway—212 S. Lime—109 Clay (Near Main) High and Euclid
Dial 4-2366 For Main Plant

At GONZAGA and Colleges and Universities throughout the country CHESTERFIELD is the largest-selling cigarette.*

BING CROSBY
Famous Gonzaga alumnus, says:
"Smoke MY cigarette. Milder Chesterfields."
Bing Crosby
STARRING IN
"RIDING HIGH"
A FRANK CAPRA PRODUCTION
RELEASED THROUGH
PARAMOUNT PICTURES

Always Buy CHESTERFIELD
They're Milder! They're TOPS!—IN AMERICA'S COLLEGES WITH THE TOP MEN IN SPORTS WITH THE HOLLYWOOD STARS
*BY RECENT NATIONAL SURVEY
Copyright 1950, Loosin & Allen Tobacco Co.