

NO EXPOSURE

**KEY**

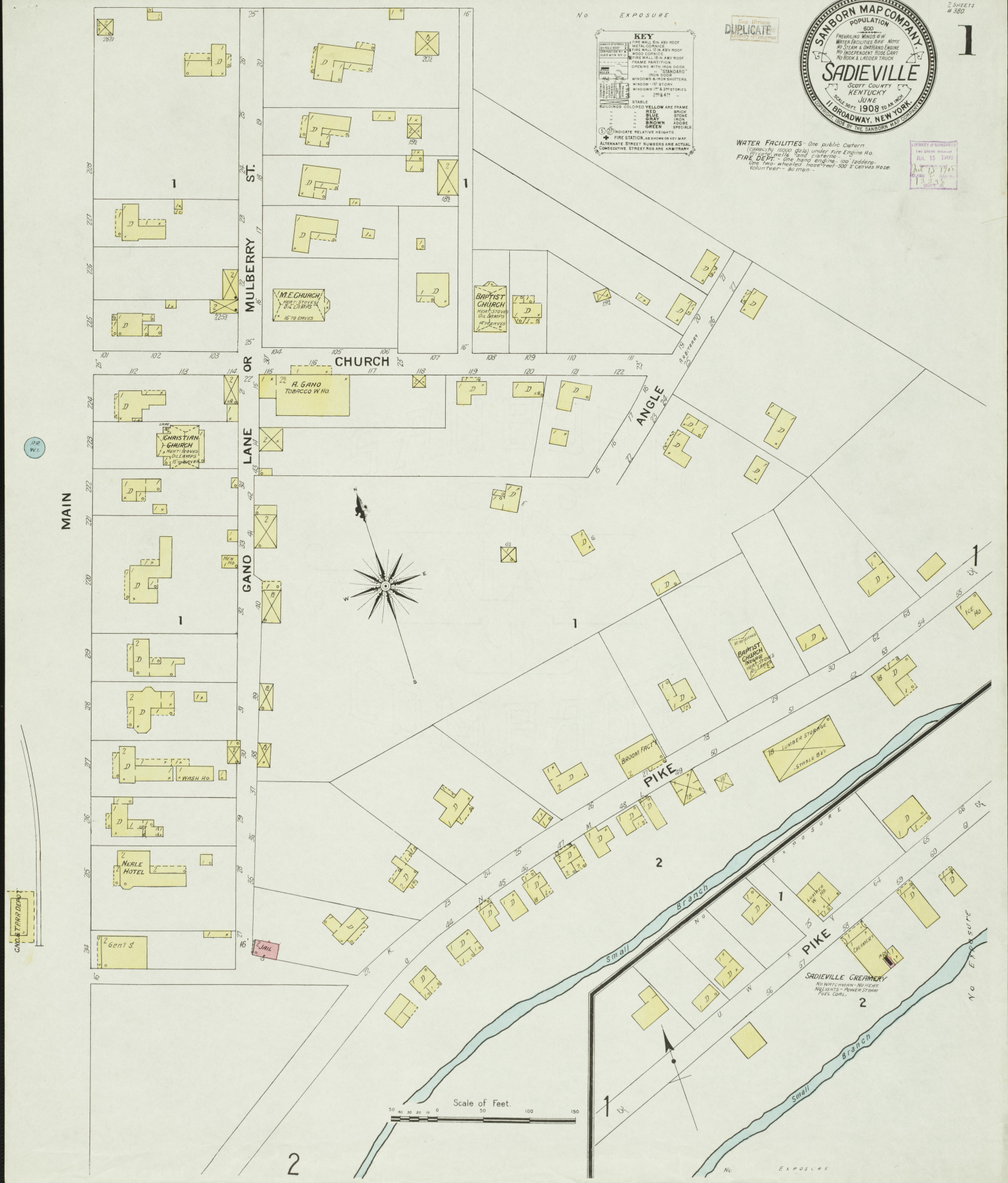
CONSTRUCTION FOR WALL & ROOF  
 SHELTERED BY METAL CORNICES  
 TERRAZZO FLOOR  
 FIRE WALL OF L. ROOF  
 FRAME PARTITION  
 OPENING WITH IRON DOOR  
 IRON DOOR  
 WINDOWS & DOOR SHUTTERS  
 WINDOWS 17 & 18 STORIES  
 2 1/2 STORIES

BUILDINGS COLORED YELLOW ARE FRAME  
 BLUE BRICK  
 RED BRICK  
 GRAY IRON  
 GREEN SPECIAL

① INDICATE RELATIVE HEIGHTS  
 \* FIRE STATION AND SHOWING KEY  
 ALTERNATE STREET NUMBERS ARE ACTUAL  
 CONNECTIVE STREET NOS ARE ARBITRARY

**WATER FACILITIES** - One public Cistern  
 Capacity 10000 Gall. under Fire Engine No.  
**FIRE DEPARTMENT** - Total Companies  
 One Fire Engine, 100 Leaders  
 One two wheeled hose-truck 500' Canvas hose  
 Volunteer - 30 men

LIBRARY OF CONGRESS  
 100 NORTH BROADWAY  
 WASHINGTON, D. C. 20540  
 Acq. 15 1945  
 475.3

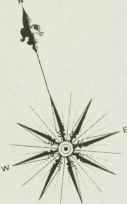
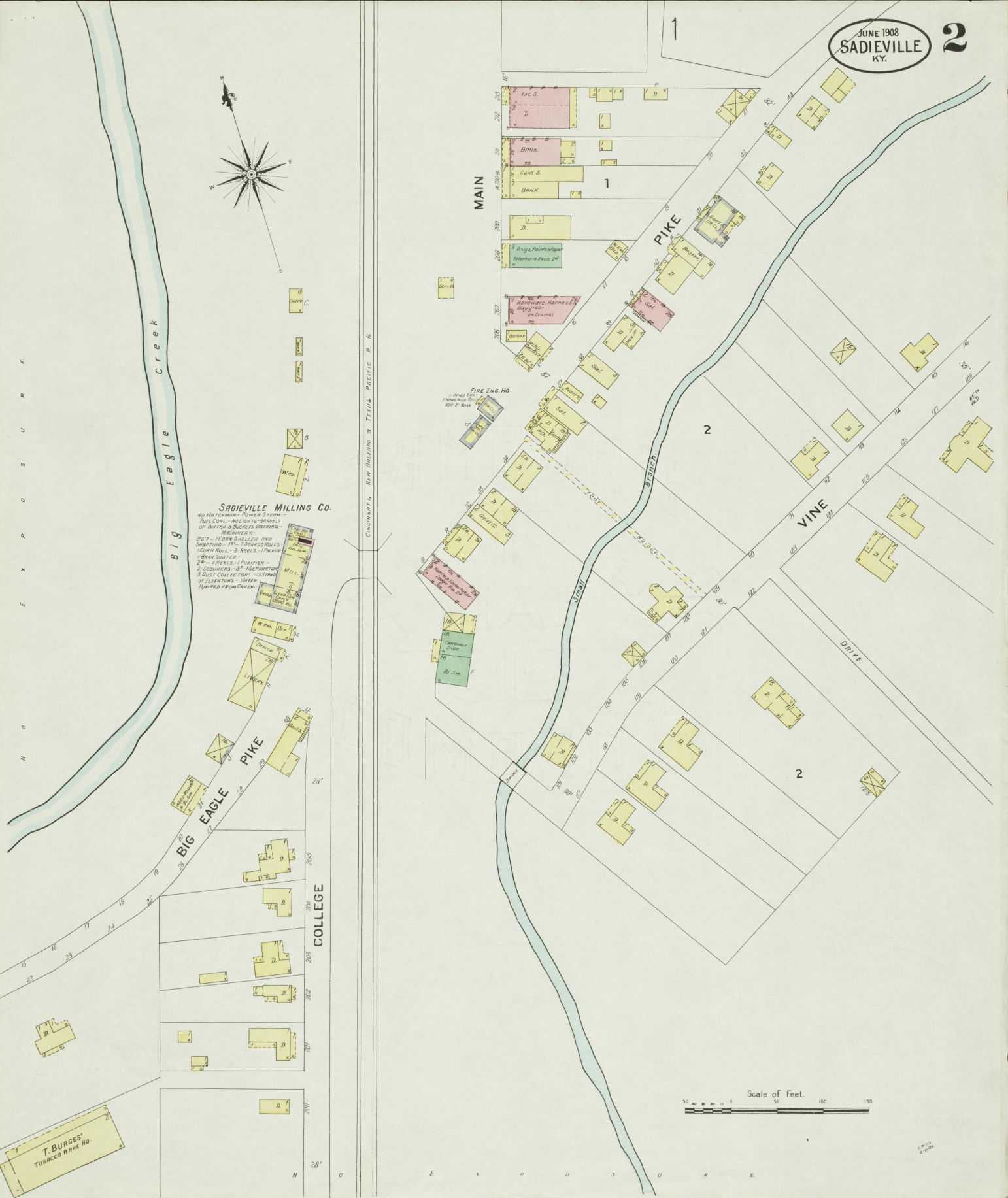


DUPLICATE

W.P.

CHICKEN HOUSE

Scale of Feet.  
 50 100 150



**SADIEVILLE MILLING CO.**  
NO WITCHAMM - POWER STEAM  
FUEL COAL - NO LIGHTS - BARRELS  
OF WATER - BUCKETS - DISTERS -  
MACHINERY  
1ST - 1 CORN SHELLER AND  
SHWITING - 15 - 2 STANDS ROLLS  
1 CORN MILL - 3 - REELS - 1 PACKER  
1 GRAY SULTER  
2 - 4 REELS - 1 PURIFIER  
2 - SCORERS - 3 - 1500 BUSHETS  
3 BUSY COLLECTORS - 15 STANDS  
OF LEVATORS - WITH  
FLARED FRONTCHESTS

**T. BURGESS**  
TOBACCO WARE HO.

