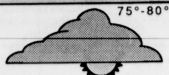


TODAY'S WEATHER



Today: Chance of rain
Tomorrow: Chance of rain

A Rocky Adventure

Photos depict the ups and downs of rock climbing in the gorge.

See Page 5

After Hours

Aircraft glides towards commercial success with a forthcoming album.

See Page 3

Kentucky Kernel

Vol. XCII, No. 32

Established 1894

University of Kentucky, Lexington, Kentucky

Independent since 1971

Friday, September 23, 1988

Hoover eyes future but remembers the past

By TOM SPALDING
Sports Editor

200 meters. It's not a long distance, but to Sherry Hoover it represents the end of a dream.

To almost every amateur athlete, making the United States Olympic team is the ultimate goal. Nothing else, no matter how prestigious, comes as close or means as much.

Sherry Hoover was just 200 meters away from that goal — 200 meters from qualifying for Seoul, Korea, and the 24th Olympic Games.

But Sherry Hoover, a five-time All-American for UK's cross country and track teams, placed seventh in the race in which only the top three finishers qualified.

She had faced these kinds of disappointments before. It was not the end of the world.

As a young girl entering high school for the first time, Sherry Hoover wanted to make friends. Growing up was difficult. Years before, her parents had split up. She loved living with her mother, but missed not having her father there.

"I look back and think how I missed not having a father," she said. "A lot of my friends, their parents never got divorced. They didn't understand when it came to Christmas time, who to go with, mom or dad. I felt like a ping-pong ball going back and forth. It was tough."

Like most teenagers, Hoover just wanted to fit in at high school.

Running was her connection.

"I just did it to more or less get involved and meet people," she said. "It wasn't like I wanted to be a good runner."

Over time, Hoover progressed. Running became more than just a hobby. "It just demanded more time," she said.

Sherry's mom, Jan Krawiec, noticed it. Sherry had always excelled in sports. But she was never as serious as this.

"When she was in grade school, they had this event called field day," Mrs. Krawiec recalled. "She did real well. She always brought ribbons home ... (But) then she started moving up."

In the small town of Woodburn, Ind., to stand out in a state with a lot of great female athletes — at least in Sherry's eyes — was a major accomplishment.

"I used to look at all those girls in awe," Hoover said. "I was amazed at what they could do."

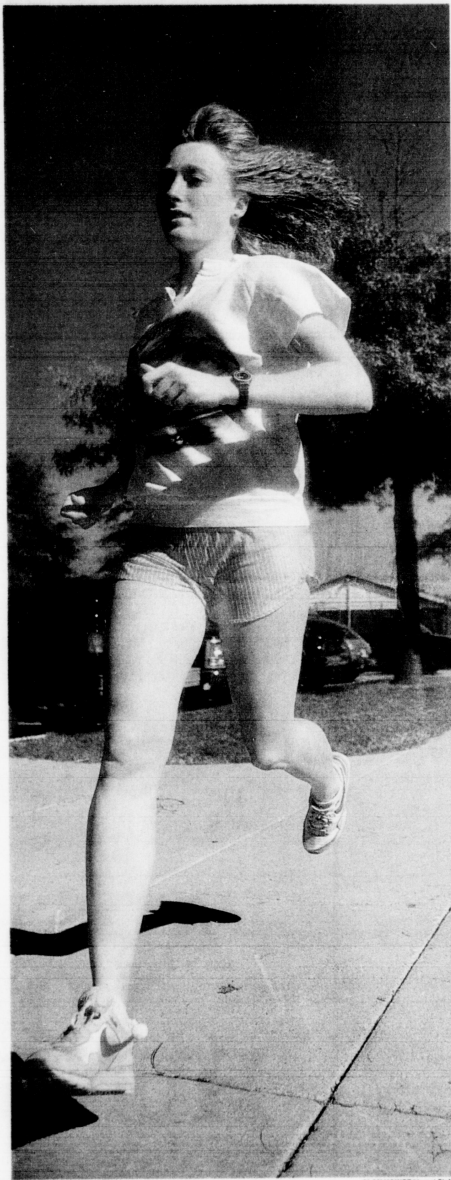
The stiff competition affected her confidence.

She decided to attend UK, but she needed to make adjustments.

Coming from Woodburn, Ind., with a population of less than 5,000 to UK with more than 22,000 students meant a big adjustment for Hoover.

To add to the adjustment, Hoover was busy trying to get through school as a chemical engineering major while trying to earn a spot on a roster loaded with talent.

"It wasn't a typical freshman year for any of them. They came here and



UK senior track runner Sherry Hoover has won five All-American awards and is a two-time UK Female Athlete of the Year.

SGA to combat drunken driving with task force

By ELIZABETH WADE
Staff Writer

Following several recent alcohol-related accidents, the Student Government Association formed a committee this week to educate UK students about alcohol responsibility.

The formation of the task force, the Committee for Alcohol Responsibility and Education, was announced by Senator Amy Butz at the SGA meeting Wednesday night. Butz is co-chair of the committee.

The committee's main objectives are to promote alcohol responsibility, alcohol education and to provide a designated driver service to students.

An alcohol-related car accident on Sept. 7 in which UK student Lisa Whalen was killed, spurred the formation of the committee, said Mark Rucker, a member of SGA's executive board.

Bradley J. Shipman, the driver of the car, has been charged with second-degree manslaughter in the case.

"Bradley Shipman is a fraternity brother and a good friend of mine and Lisa was a good friend of Amy's, and what happened to them could have happened to anyone, any one of us," Rucker said. "There were three alcohol-related accidents involving UK students that week and we don't want it to happen again."

"We started this committee because of all the alcohol-related problems on campus and we really need help on this," Butz said. "We have several ideas but we have a lot to work out."

The committee wants to start a designated driver program in all sororities, fraternities and dormitories. Each organization would have a fund to pay for

expenses such as cover charge for bars, food and gas.

"We would like to start something where at least two people volunteer per night to remain sober in case anyone needs a ride after going out," Rucker said. "We can't push a designated driver program on anyone, lawfully, we just hope they volunteer."

CARE would also like to start a bus service with LexTran or a trolley every night that runs a route between the major bars and the campus. This proposal would cost a great deal of money and legal problems would also exist.

"The bus route would be difficult to do because according to our attorney, SGA would be liable," Rucker said. "We can't do it right away because of liability and cost but hopefully we will have some definite answers in one or two months."

Rucker did say, however, that the committee would like to take immediate action by hanging up signs in pay phones that say, "If you're drunk don't drive, take a taxi." He also said the signs would have phone numbers of taxi services.

CARE also has called most of the bars in town to see if they would supply free non-alcoholic drinks to designated drivers.

"Most bars said they already do, but some hadn't thought about it," said Butz.

SGA is combining their efforts with SADD, BACHUS and Student Wellness in order to increase awareness and responsibility on campus.

The four organizations will be sponsoring alcohol awareness week Oct. 15 to Oct. 22. Each organization will sponsor a different event each night.

Student Senate violates Judicial Board ruling

By C.A. DUANE BONIFER
Editorial Editor

The Student Government Association Senate violated a decision by the Judicial Board Wednesday night when it approved an amendment that limits how much freshmen senator candidates may spend on their campaigns.

The amendment, sponsored by Senator at Large Penny Peavler, established that an individual freshman senate candidate may not spend more than \$75 on the campaign and a ticket may not spend more than \$100.

The amendment, which was passed unanimously by a voice vote, was proposed with the understanding that SGA lawyer Keith Baker would hand down an opinion that said the Judicial Board had overstepped its boundaries in ruling on a case last April, Peavler said.

In the April 26 decision, the Judicial Board decided that expenditure limits on SGA campaigns are a violation of the First Amendment of the Constitution. The ruling came out of a case charging SGA President James Rose with exceeding campaign expenditure limits.

The decision was based on a Supreme Court case, Buckley v. Valeo, which stated

that limits on how much an individual can spend on a campaign was unconstitutional.

Although she had not directly spoken with Baker, Peavler said the SGA Vice President Leah McCain told the Senate Wednesday night that Baker was going to hand down a decision today stating that the April decision by the Judicial Board only applied to the Rose case and not to all SGA campaigns.

McCain said last night that she has not been involved with the issue and Rose has communicated with Baker about the issue.

Baker said last night that he has written his opinion and will release it this morning. Although he declined to comment on the specifics of the opinion he said "I believe I gave everyone the same impressions" about what his opinion would likely be.

"I think it would have been better to have proof," Peavler said. "But I think if I wouldn't have proposed it someone else would have."

"I didn't want to wait until I had proof because I was under the impression that I would have proof soon. I took that chance and if we don't have proof then I'm going to look like a fool."

See BOARD Page 11

Homecoming time means different things to UK, city

Businesses won't fare any better this weekend

By DAVID ROGERS
Staff Writer

Homecoming weekend does not draw a much bigger crowd than any other UK home game, according to several local hotel and car rental agency managers.

"It's actually going to be a pretty normal weekend," said Crystal Willhoite, reservations manager at the Hyatt Regency. "People have been making reservations about two weeks in advance, and we should be approximately 80 percent full for the weekend."

Willhoite pointed out that the occupancy level was about average for any weekend UK played a home game.

"When they're playing someone in the (Southeastern Conference), then that is a pretty big weekend," she said. "For this Homecoming game, however, the UK football team will be facing off against Kent State, a non-conference team."

Because of an agreement with the UK Alumni Association, visiting alumni staying at the Hyatt Regency will pay only \$70 a night, compared to the regular rate of \$115. Willhoite said she was expecting about 100 people because of the agreement.

Sue Parsons, reservations manager at the Continental Inn agreed that the homecoming crowd wouldn't be that much bigger than any other normal weekend.

"Our weekends are usually really good," Parsons said. "We normally have between 250 to 300 rooms filled on the weekend, which is about 80-percent full."

Parsons added that some of the reservations this weekend could be due to fraternity alumni coming into town. Three

UK fraternities are having dances at the hotel.

"It's hard to tell exactly why someone is staying here," Parsons said, "because we just don't ask. After all, why should we?"

Paul Kirwin, general manager of the Radisson Plaza Hotel said that a few people had booked rooms several months in advance although most of the reservations had been made in the last two weeks.

Kirwin, unlike the other managers, said he did expect Homecoming to affect the number of people that would be staying at the Radisson this weekend.

"I expect us to be about 90-percent full this weekend," Kirwin said, while on an average weekend the hotel would be about 60-percent full.

Rental car managers are fairs a little better, reporting slight increases in rentals for the Homecoming weekend. But Samuel Wheat, manager of the Avis at

See HOMECOMING, Page 11

Alumni use time to remember, see changes

By MEREDITH LITTLE
Staff Writer

Homecoming is not just a weekend when UK students watch their football team play, it's the weekend when UK alumni come back to the campus.

"Believe me," said Bill Evans, a member of the class of 1938, "we're not here to see the game."

Jay Brumfield, the director of Alumni Affairs at the King Alumni House says that for the alumnus, Homecoming is a time for reunions.

"We take advantage of Homecoming to have class reunions," he said. "This year

we will have reunions for every fifth class year back to '38, and the 50-year reunion will be our main event."

Alumni come from all over the country for the reunions. The members of the class of '38 alone come from such places as Florida, Georgia, New Hampshire, California, Texas, Colorado, Oregon and Canada.

The administrative arm of the Alumni House, the 57-member Alumni Board of Directors, has planned a full schedule for returning alumni this weekend.

Alumni met at the Alumni House to register this morning. There's a campus tour at 2:30 p.m., then tonight is a banquet for the classes. Different colleges also have gatherings. Brumfield said. On Saturday, each class has a separate function to go to, and there's a Homecoming concert after the game.

Although the reunions take place during Homecoming weekend, the actual Home-

See ALUMNI, Page 11

VIEWPOINT

C.A. Duane Bonifer
Editorial Editor

Michael Brennan
Editorial Cartoonist

Thomas J. Sullivan
Executive Editor

Jay Blanton
Editor in Chief

Jim White
Associate Editor

Julie Esselman
Special Projects Writer

Letters

More doesn't mean worst

Unfortunately, Charlie McCue is afflicted by the narrow-minded view that the more exposure a band gets (e.g. sales in a "mall record store," playing concerts attended by "mall queens"), the more "commercial" they have thus become and, accordingly, the worse a band they are.

Do you realize how oversimplified and downright fallible an approach that is? I think that perhaps it is important to weigh the merits of a band not by the number and type of people that pay attention to them, but by the

inherent quality of each album they make.

I find it particularly distressing that our musical tastes are similar. Apparently, you have not heard INXS's first album. It was not very good. *Underneath the Colours* (the second), however, was satisfactory. (Incidentally, you misspelled the name of their third LP.)

No doubt, *Listen Like Thieves*, the fifth, was their finest effort. But *Kick* comes very close; this is truly an ass-kicking record, regardless of the number of teen-age girls that buy it.

What about *The Police*? Don't tell me *Synchronicity* was their worst album just because it sold the most. I suppose now that Tracy Chapman's LP has reached the top of *Billboard* it has declined a bit in

quality. Perhaps it can even be found in "mall record stores," God forbid.

It's a good thing 10,000 Maniacs' *In My Tribe* hasn't gone platinum; I certainly wouldn't want to own an album tainted by music sales. And if XTC ever hits the top 10, well, I suppose I could still find some bands around that haven't broken through.

You almost made a good point, namely that overt commercial success often compromises the artistic

quality of an act's future musical output. I hope you understand the difference.

Samuel A. Scott works at the UK Center on Aging.

Join SDC

The Student Development Council at UK works with the UK Development Council by

encouraging students to be involved while still a student, and to support the University after they graduate. SDC helps to enhance the favorable relationship between students, the community, supporters and alumni.

In recent years, our projects have included the UK Challenge, the Dean's Task Force, the Partners for Excellence program and participation in the organization of the Rally for Higher Education.

The Student Development Council is looking for strong, motivated leaders, with innovative ideas who will work as part of a team for the improvement of UK.

I encourage all UK students to apply for membership as my experience on the council has proven to be both worthwhile and rewarding.

Debra Stanley is a physical therapy junior.

Pick up the Kernel
And pick up
on what's
happening

SENATOR ELECTIONS

- ☆ Freshman
- ☆ LCC
- ☆ Nursing
- ☆ Library Science
- ☆ Social Work

Pick up applications in SGA Office, Rm. 120 Student Center. Deadline 4:00, Sept. 28.

Elections Oct. 5&6



LAFAYETTE TRAVEL

HONG-KONG & BANGKOK TOUR
Departs Dec. 26 from Lexington
Return Jan. 23
Price \$1,799

GO BIG BLUE - BEAT KENT STATE
268-4000

- Call Us for All Your Travel Needs -

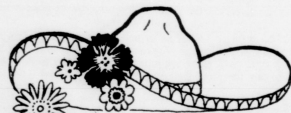
- ☆ Student fares
- ☆ Group travel
- ☆ Charter flights to Europe
- ☆ Business arrangements
- ☆ Hotels, rental cars
- ☆ Campus delivery
- ☆ Lowest air fares
- ☆ All cruise lines

OUR PERSONAL SERVICE IS ALWAYS FREE!

1-800-253-0668 (KY)

1050 Chinoe Rd.

Remember —
Thanksgiving and
Christmas space is almost
sold out!



EIGH ON ROSE CANTINA

Lunch Specials Mon.-Sat. 11-4
Two Toquitos, Rice & Beans..... \$2.95
Hacienda Galvan Tostada..... \$2.95
Burrito Special Hacienda Galvan
Special \$2.95
Wednesdays 7-9 Corona..... \$1.50

Happy Hours

4-7 p.m.
10 p.m.-1 a.m.
Pitchers of Margaritas
\$4.50
Pitchers of Little Kings
and Old Milwaukee
\$1.99
Free hors d'oeuvres

Sunday Brunch

All-You-Can-Eat
Including Champagne
\$5.95



301 East High St. Phone 233-2243
Sunday Brunch 11 a.m.-4 p.m.
Dinner 4-11 p.m.
Serving Fine Mexican Cuisine for 31 years
Your Patronage is Appreciated
Open Weekdays 11-4 - Dinner - 4 p.m.-1 a.m.



AREN'T YOU HUNGRY?

We start with sizzling hot flame-broiled beef. We add fresh tomato, crispy lettuce, crunchy onion—and other tasty fixin's. And then we serve it just the way you want it.

GO BIG BLUE

BURGER KING 99¢ Whopper

Please present this coupon before ordering. Limit one coupon per customer. Not to be used with other coupons or offers. Void where prohibited by law. This offer expires October 3, 1988. Good only at all Lexington locations.

Burger King Whopper—Reg. U.S. Pat. & TM Off. 1982 Burger King Corporation

AFTER HOURS

Rob Seng
Arts Editor

CHEAP EATS

HIGH ON ROSE
301 E. High St.
233-2243

Enough has already been said and written about this place being a Lexington institution, so let's just get to the food.

High On Rose is home of perhaps Lexington's best and cheapest Mexican food. The restaurant is currently running lunch specials from 11 a.m. to 4 p.m. but the regular prices aren't that bad either.

If you don't get filled up on the free chips and salsa

(don't ask for the hot sauce unless you like methane), then a beef or chicken taco (\$1.50) or burrito (\$1.95) should be the next step.

The burrito is served enchilada style and, if you order the Hacienda Galvan Special, it comes with rice.

For bigger appetites and wallets, the Camarones Gulizado (\$7.50) is recommended for lovers of spicy fare. The dish consists of shrimp marinated in bell peppers and onions and is served with soup, rice and beans.



Austin City Saloon — 2350 Woodhill Shopping Center. John Michael Montgomery and Troy Gentry will perform during Happy Hour, 5-8:30 with no cover. Kentucky Fever Band will play tonight at 9, no cover.

Babylon Babylon — 117 N. Lime. The Resurrected Bloated Flosters along with the Afghan Wigs will play tonight. Saturday night features the Speed Hickies and Bucking Strain will perform. Both shows start at 10 with a \$3 cover.

The Bearded Seal — Euclid Ave. Coyote Ugly will perform tonight and tomorrow at 9. Cover is \$2.

The Brass A Saloon — 2902 Richmond Road. **Breedings** — 509 W. Main St. The Bad Guys will take the stage at 9:30, cover is \$3 for tonight and Saturday.

Brewery — 509 W. Main St. Larry Redmon will perform tonight and tomorrow starting at 9:30 with no cover.

Cheapside Bar — 131 Cheapside. The Rotels will perform at 9 tonight and Saturday with no cover. Valid ID a must.

Comedy On Broadway — 114 N. Broadway. Chip Flatow, Reid Harrison and Jeff Shaw will perform tonight and tomorrow at 6 to 10:30. Cover is \$6.

Copperfield's — 249 W. Short. Parker Coleman will play guitar tonight and tomorrow night at 9:30. Cover is \$2.

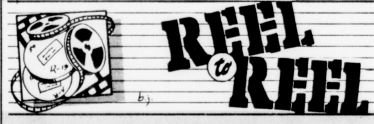
Kings Arm Pub — 102 W. High St. Pat Phelps and the South Side will take the stage tonight and tomorrow starting at 9 with a \$2 cover.

Mainstreets — 269 W. Main St. Metro Blues will play tonight starting at 10. Jack O Diamond will take the stage Saturday night at 10. Cover is \$1 for both shows.

Rhinestone's — Mickey Gilley will perform tonight at 7:30 and 10:30 with reserved seats \$18 and general admission \$15. The L.A. Guns (hard rock) will play Saturday night at 9:30, \$9 reserved and \$7 general admission.

Streamers — 815 Euclid. The club is open for dancing from 8 to 1 a.m. Cover is \$3.

Two Keys Tavern — 333 S. Limestone St. Royal Crescent Mob will perform tonight at 9:30, cover is \$5. The Awareness Art Ensemble will perform Saturday at 9:30 with a \$3 cover.



A Fish Called Wanda — Rated R. (Lexington Mall: 2, 4:15, 7:35, 9:35 and tonight and tomorrow night at 11:30.)

Bambi — Rated G. (Turfland Mall: 1:45, 3:15, 4:45 on Saturday and Sunday only.)

Betrayed — Rated R. (Fayette Mall: 2, 4:30, 7:15, 9:45 and tonight and tomorrow night at 12:05. North Park: 2:05, 4:40, 7:30, 10.)

Big — Rated PG. (Fayette Mall: 2:30, 4:50, 7:30, 9:35 and tonight and tomorrow night at 11:40.)

Bull Durham — Rated R. (Turfland Mall: 2, 4:20, 7:15 and 9:35 tonight and 7:15 and 9:35 tomorrow and Sunday.)

Cocktail — Rated R. (North Park: 2:10, 4:20, 7:40, 9:40 and tonight and tomorrow night at 11:45. South Park: 2:30, 5:10, 7:45, 9:40 and tonight and tomorrow night at 11:30.)

Coming To America — Rated R. (North Park: 2:25, 5, 7:35, 9:50 and tonight and tomorrow night at 12:05.)

Dead Ringer PREMIERE — Rated R. (North Park: 1:50, 4:15, 7:20, 9:45 and tonight and tomorrow at midnight. South Park: 2, 4:45, 7:40, 9:55 and tonight and tomorrow at midnight.)

Die Hard — Rated R. (North Park: 2:15, 4:50, 7:20, 9:45 and tonight and tomorrow night at 12:05. South Park: 2:20, 5, 7:30, 10 and tonight and tomorrow night at 12:15.)

Eight Men Out PREMIERE — Rated PG. (Lexington Mall: 2:30, 4:55, 7:30, 9:50 and tonight and tomorrow at 12:05.)

Kansas PREMIERE — PG-13. (North Park: 2:30, 4:55, 7:25, 9:40 and tonight and tomorrow at 11:55. Fayette Mall: 2:15, 4:40, 7:45, 9:55 and tonight and tomorrow at midnight.)

Married to the Mob — Rated R. (North Park: 2:15, 4:35, 7:30, 9:35 and tonight and tomorrow at 11:35. Turfand Mall: 2:15, 4:40, 7:25 and 9:25.)

Moon Over Parador — Rated R. (Crossroads: 2:15, 4:50, 7:40, 9:45 and tonight and tomorrow night at 11:40.)

Nightmare on Elm Street 4 — Rated R. (North Park: 2:30, 4:30, 7:50, 9:55 and tonight and tomorrow night at midnight. South Park: 2:05, 3:45, 5:25, 8, 10:05 and tonight and tomorrow night at 11:45.)

Patty Hearst PREMIERE — Rated R. (South Park: 2:24, 4:50, 7:25, 9:30 and tonight and tomorrow at 11:25.)

Young Guns — Rated R. (North Park: 2:20, 4:45, 7:55, 10 and tonight and tomorrow night at 12:05. Crossroads: 2, 4:30, 7:25, 9:35 and tonight and tomorrow night at 11:40.)

Who Framed Roger Rabbit — Rated PG. (North Park: 1:55, 4:30, 7:25, 9:35 and tonight and tomorrow night at 11:45. South Park: 2:15, 5:15, 7:20, 9:20 and tonight and tomorrow night at 11:20.)

Compiled by David Sterling

Aircraft aims for soaring success

By JULIE GILKERSON
Staff Writer

There is a bizarre sort of musical world on America's college campuses. There is an entire spectrum of moods and tastes. As a general rule, alternative music seems to be the accepted style right now. Everyone is striving to be different.

Suddenly there is a group for the "Top 40 Tunnel Vision" crowd. Their name is Aircraft, they come from the Midwest, and they just don't want to be different.

Mitch Viegut, lead guitarist for Aircraft, described the group's music as non-alternative.

"We aren't trying to be different," Viegut emphasized. "We are definitely conforming to the pop-rock scene."

So far it seems to be working for these five guys. Aircraft has achieved regional success in their home of Warsaw, Wisconsin. Besides Viegut on guitar, the group consists of: David Saindon, lead vocals; Peter Phillip on bass; John Douglas Dixon on keyboards; and Ace Gyro on drums.

Aircraft formed about 16 years ago. Viegut and Saindon got together and began playing. Soon after, the present line-up came together. They've been together for eight years.

A real peculiarity about this band is they have their own recording studio, an obvious plus in the record industry.

"The studio is 24 tracks," Viegut explained. "It's easier for us to cut our albums when we are paying \$300 to \$400 instead of the usual \$50,000 some guys have to pay to record. This way we can take our time and get something really good on the tape."

"We worked to get this studio. There were a lot of investments and really hard work," Viegut said.

Aircraft's music is described as "Power Pop." It's straight forward music. Not really with a meaning, but just having fun. The band's music follows the tradition of REO Speedwagon, Journey, Styx, and Rush.

At present date, Aircraft is work-



PHOTO COURTESY OF MARK ALAN
Patterning themselves after Journey and Loverboy, Aircraft is hoping to find that same type of arena-rock success.

WHEN, WHERE AND HOW MUCH

Aircraft will perform tonight, Saturday and Monday at The Brass A Saloon.

ing on their third album entitled *Aircraft Let's Take Off* and *Proximity*, the band's first and second albums, were regional releases that did very well. *Aircraft*, though, is going to be a national release.

"The first two albums were mainly pop. The third is a little bit harder," Viegut said. "We're really excited about it. Glen Klodkin is producing the album. He has worked with several successful bands in the past and it should give the release a real rock-and-roll edge. We went for a real 'live feel'."

When performing in public, which Aircraft does a lot of, Viegut stresses the energy put into the act.

"We get satisfaction on the stage. We put so much energy in it is a lot of hard work, almost too much hard work. We are going to be on the road until Christmas, when we get a two week break. Then it is right back on the road," stressed Viegut.

The dates on their current tour includes many campus, as well as local bar dates. They have been to Kentucky before, making stops in Bowling Green and Louisville.

"We like to play here. The crowds are pretty much receptive," Viegut said. "There are a lot of young teens in the crowd, yet we play music for everyone."

The future seems to be depending on this new album. Aircraft believes they will go big time if this album goes over as well as they think it will.

Wright brings warped humor to town

Staff reports

Although Steven Wright performed before a packed house last June at the Singletary Center for The Arts, the Student Activities Board is bringing him back.

If you believe his act, he's done everything from spilling spot remover on his dog ("Now he's gone") to playing poker with tarot cards ("I got a full house and four people died").

Wright is refining material for an upcoming HBO special and will have a comedy short that will air on HBO later this fall.

WHEN, WHERE AND HOW MUCH

Steven Wright will perform Sunday at 8 p.m. in Memorial Hall. Tickets are \$10 for students and \$12 for the general public.



WRIGHT

Seminar will discuss scope of recent films

By BRANDI ARIMES
Contributing Writer

Short stories, essays, poetry, novels, and grammar — these are some of the words that typically come to mind when we think of the English Department.

However, for the past five or six years, professor Greg Waller has focused much of his attention on the instruction of film classes. The

curriculum of these classes ranges from the history of the silent film to the study of the modern American movie.

Waller takes pride in his work and feels that examining all aspects of the film world is "important to do," in addition to covering such topics as popular fiction, detective stories, and American literature in other classes.

This Saturday Waller will be conducting a discussion entitled "Meaning in Popular Film," part of UK's Saturday seminars series, which will center on American movies in the 1980s such as "Top Gun," "Beverly Hills Cop," and "Rambo II."

The discussion will provide a general insight into each film, including recent excerpts. Questions which Waller wants to address are: "What kind of story does it present? What type of hero does it construct? What are some of the explicit and implicit political and cultural points it makes?"

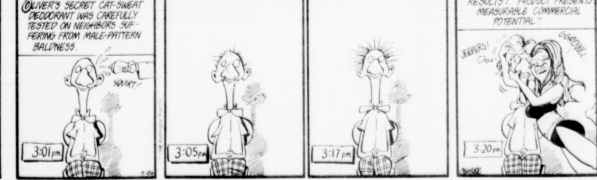
The seminar should be informative and entertaining for both occasional movie-goers and avid film buffs, Waller said.

"Meaning in Popular Film" will be presented tomorrow in 340 Classroom Building from 10 a.m. to noon.

BLOOM COUNTY by Berke Breathed



BLOOM COUNTY by Berke Breathed



KERNEL QUICK CUTS



By MICHAEL JONES
Contributing Writer

NOTHING'S SHOCKING
Jane's Addiction
Warner Brothers Records

Some people claim that all modern music has lost its outlaw qualities in favor of patent commercialism. Well these people definitely haven't heard *Nothing's Shocking* by Jane's Addiction.

This album is more than the mindless thrash one might expect from a band that does a song entitled "Pigs In Zen." The music is as varied as are the lyrics. There are no sophomoric heavy metal songs about nymphomaniacs in leather or riding a motorcycle from hell.

The album opens with "Tip the Beach," a psychedelic instrumental. This leads into the album's best cut "Ocean Size." The song deals with lead singer Perry Farrell's urge to be invulnerable. Farrell sings, "I wish I was ocean size/they cannot move you/ man no one tries..."

"I Had A Dad" deals with Farrell's abandonment by his father. From the trembled playing of the band, you'd think it was something they all had in common with lines like "had a dad big and strong turned around/round my daddy gone."

In the end it seemed to be saying more about God than a dead-zey father — "If you see my dad/tell him my brothers all gone mad/heating on each other." That's enough social commentary to make Bonno gag.

"Ted, just admit it. Nothing's Shocking" and "Standing in the Shower" are commentaries on the state of the nation. Next we have "Summertime (feat.)" and "Mountain Song" which both deal with Farrell's childhood.

But before you can say "how lame," the band rips into "Idiot's Rule." Someone forgot to tell these guys that punk was dead because this is one of the best examples of it since Iggy Pop went to be your dog.

"Jane Says" is the story of the band's namesake. It's about a woman who has lost her self-respect. "Jane says, 'I'm through with Sergio/he treats me like a ragdoll.'" says, "I don't own him nothing/ but if he comes back again/tell him to wait right here for me."

Finally "Pigs in Zen" is the best split-in-your-eye song I've heard in a while. In fact, this album is the best thing I've heard in a long while.

TOP CAMPUS ALBUMS

1. CENTURY DAYS
Die Kreuzen
Touch and Go Records
 2. RANK
The Smiths
Roughtrade Records
 3. HANG TIME
Soul Asylum
TwinTone A & M Records
 4. LOVELY
The Primitives
RCA Records
 5. PEEP SHOW
Slousie and The Banshees
Geffen Records
 6. NOTHING'S SHOCKING
Jane's Addiction
Warner Brothers Records
 7. SHORT SHARP SHOCKED
Michelle Shocked
Polygram Records
 8. LIFE'S TOO GOOD
The Sugarbubs
Warner Brothers Records
 9. SUBSTANCE
Joy Division
Warner Brothers Records
 10. SCARRED BUT SMARTER
Drivin and Crin
Island Records
- As determined by airplay on WFRL

New age artist to perform in Lexington for homecoming

By AMY MUDD
Contributing Writer

When you think of Homecoming, you may generally think of the football game, the dance, or the parties, but here is a different twist



STOLTZMAN

to the activities week.
The UK Homecoming Committee and the Singletary Center for the Arts are bringing new age clarinetist Richard Stoltzman to Lexington this Saturday.
"That would be perfect for the Center," said Holly Salisbury when she heard about the "New York Counterpoint" tour. "I'm taking a risk but I wanted to bring some new music to Lexington," said Salisbury.
"He's the Wynton Marsalis of the

clarinet but he's just not that well-known here," said Salisbury.
The concert is new music and will be a mixture of New Age, jazz, folk, and classical music. They will be playing some pieces from their albums, *Begin Sweet World*, *New York Counterpoint* and from their new, as-yet untitled album along with some improvisational pieces.
Richard Stoltzman is well performing with Eddie Gomez, who has toured with Miles Davis, Gerry Mulligan and Chick Corea and

played 11 years with Bill Evans, on bass and Bill Douglas on keyboards. John Pearson will be synchronizing his slides with the music. Pearson has been performing "visual concepts" with Stoltzman for the last 15 years. He also has seven photography books out.
Stoltzman is a member of the noted ensemble TASHI, a chamber music group. He has toured internationally and has played with the Boston Pops at home. Bill Douglas

also writes and performs with TASHI.
"We met at Yale and have been playing concerts together ever since," said Bill Douglas of Stoltzman. The show will be a combination of comradeship, talent and innovative ideas playing music to photos. "We try to uplift the audience and evoke positive feeling," said Douglas.
According to Douglas, Stoltzman and the group will perform

pieces ranging in styles from classical to jazz to rock inventions on the bassoon, clarinet and bass. Judging from Douglas' comments, it should be very interesting and mind-opening, even for those who aren't normally classical music fans.
The concert will be held on Saturday, Sept. 24th, at 8 p.m. Tickets are \$15 for general admission and \$8 for students and Sr. citizens. Tickets can be purchased at the Singletary ticket office.

Police union backs Bush; Dukakis says Bush assaults truth

By WILLIAM M. WELCH
Associated Press

Republican George Bush touted his endorsement by Michael Dukakis' hometown police union yesterday, prompting Dukakis to surround himself with other law officers and accuse his rival of "assault and battery on the truth."

"What George Bush is doing to the truth in this campaign is a crime," the Democratic presidential nominee said in perhaps his

strongest attack on Bush to date. "His administration has waged not a war on crime, but a war on crime programs."

The sharp rhetoric came three days before Dukakis and Bush were to face each other in the first of two nationally televised debates — confrontations that both sides consider crucial.

Meanwhile, President Reagan was back on the campaign trail for his vice president in Texas, scolding "born-again George Pattons"

who say they support a strong national defense. It was an apparent reference to Dukakis, who spent last week sounding hawkish as he laid out his defense policies and rode in a modern M-1 tank.

Reagan spoke to students at Baylor University in Waco, then was joining Bush at a big fund-raising dinner in Houston.

Bush traveled to Boston to pick up the endorsement of the Boston Police Patrolman's Association, a 1,500 member union.

"I'm the one in this race who wants to strengthen law enforcement," declared Bush. "My opponent is strongly out of the American mainstream on issues such as fighting crime."

Although Dukakis has won the backing of other police groups in his state and in Bush's adopted home state of Texas, a spokesman for the Boston police group said its members felt Bush would be more attentive to law enforcement needs

than would the Massachusetts governor.

Robert T. Guiney, president of the association, called Dukakis "no friend of police." He cited Dukakis' opposition to the death penalty, his support for a former program granting weekend furloughs for convicted felons, and Dukakis' failure to attend funerals for three police officers recently.

However, it was not the first

time the union has endorsed a Republican. In 1960 and 1964 the association supported Reagan and in 1984 it endorsed Republican Ray Shamie in his unsuccessful Senate bid against John Kerry.

The visit was Bush's second to Boston as the Republican presidential nominee. Earlier this month he denounced Dukakis for failing to clean up pollution in Boston Harbor.

J & H
ARMY/NAVY STORE
VALUABLE COUPON

20%
OFF!

20%
OFF!

20% Off any purchase of
pleated or plain front Duckhead slacks
With this coupon. Expires 9/30/88

VALUABLE COUPON

20%
OFF!

20%
OFF!

Ray-Ban
BAUSCH & LOMB
The world's finest sunglasses

Save 20% with this ad!
Over 70 styles and colors to choose from!
With this coupon. Expires 9/30/88

We Have:

Backpacks • Book Bags • Camouflage Clothing • UK Clothing • Hiking Shoes & Boots • Red Wing • Vuarnet • Lee • P-Coats • Field Jackets

STORE HOURS
MON-FRI 9 a.m.-8 p.m.
SATURDAY 9 a.m.-6 p.m.

515 W. Main (Across from Rupp Arena)

FREE

**Best Pizza Pizza
Best Value
Day in and
Day Out**

Buy any size original **Round** or **Pan** Pizza at regular price and get another pizza **FREE!**

PIZZA MENU			CAESARS SANDWICHES* & SALADS AVAILABLE				
Cheese	S	M	L	Salads	S	M	L
One Item	6.15	8.30	10.95	Tossed	1.35	2.40	3.80
Two Items	7.20	9.30	11.95	Greek	1.55	3.10	4.95
Three Items	7.95	10.30	13.20	Antipasto	1.55	3.10	4.95
Little Caesars Special	8.95	11.65	14.75	CHOOSE FROM THESE DRESSINGS			
(Pepperoni, Mushrooms, Green Pepper, Onion and Ham)				French, Italian, Thousand Island, Greek & Ranch			
Extra Items over 3"	.75	1.00	1.25	BEVERAGES			
Extra Cheese	1.40	1.80	2.30	Coca-Cola®, Diet Coke®, Cherry Coke®, Sprite®			
				Sno® 60, Medium 75, Uter 95			
				SPECIALTIES			
				Crazy Bread® \$1.25			
				Crazy Sauce® 90			
				Super Slice (1/2-Medium Pizza) 1.25			

CHOOSE FROM THESE TOPPING:
Pepperoni, Mushrooms, Onions, Ham, Bacon, Ground Beef, Italian Sausage, Green Peppers, Anchovies, Hot Pepper Rings, Olives.

**Campus Delivery
357 Duke Rd.
269-7354**

Little Caesars Pizza
When you make pizza this good, one just isn't enough.

Get An IBM PS/2®

Now And Save

DELIVERY IN OCTOBER

For a limited time only! Offer ends September 30, 1988

**University of Kentucky Students, Faculty & Staff
AND Departmental Purchases**

IBM PS/2 Model 25

- color display
- 20MB fixed disk & adapter
- 128K memory expansion
- mouse
- DOS 4.0
- Microsoft Windows vers. 2.1
- Microsoft Word (Academic vers. 4)

\$1683

IBM PS/2 Model 30

- 20MB hard disk
- 12" color display
- mouse
- DOS 4.0
- Microsoft Windows vers. 2.1
- Microsoft Word (Academic vers. 4)

\$1935

IBM PS/2 Model 50

- 12" color display
- 20MB fixed disk
- mouse
- DOS 4.0
- Microsoft Windows vers. 2.1
- Microsoft Word (Academic vers. 4)
- Microsoft Excel vers. 2

\$2770

IBM PS/2 Model 50Z

- 12" color display
- 30MB fixed disk
- mouse
- DOS 4.0
- Microsoft Windows vers. 2.1
- Microsoft Word (Academic vers. 4)
- Microsoft Excel vers. 2

\$3010

IBM PS/2 Model 70

- 12" color display
- 60MB fixed disk
- 1MB memory expansion
- mouse
- DOS 4.0
- Microsoft Windows vers. 2.1
- Microsoft Word (Academic vers. 4)
- Microsoft Excel vers. 2

\$4510

To order your IBM PS/2, contact:

**Students, Faculty & Staff
Orders:**

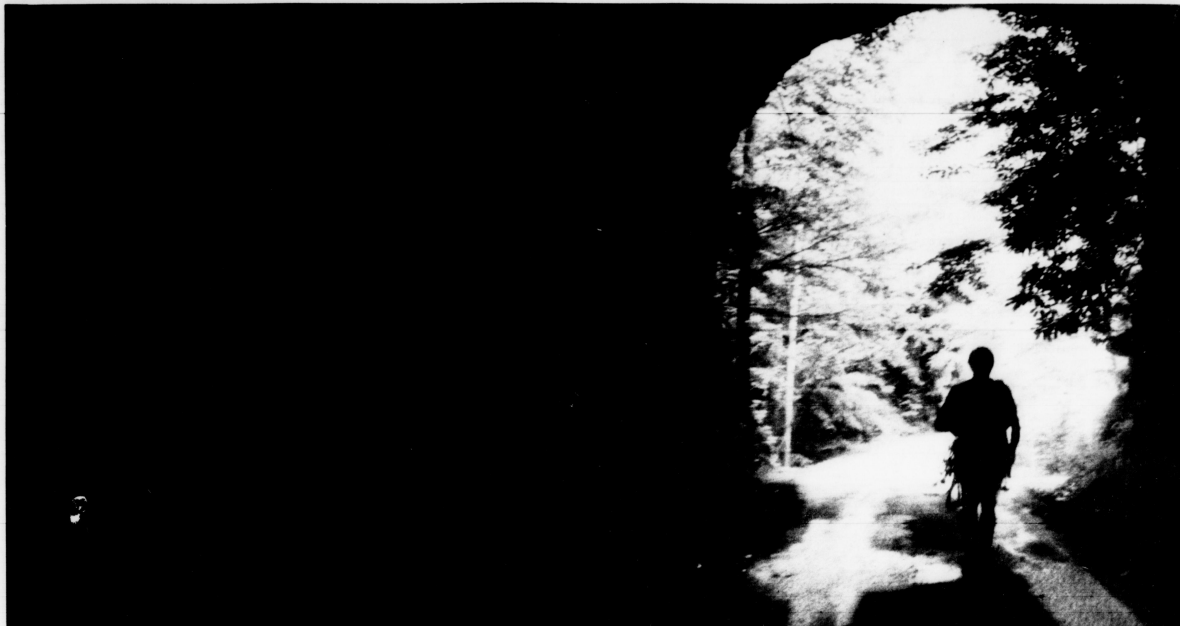
Wilma Daugherty
UK Parking Structure No. 2
(606) 257-6320

**Departmental
Orders:**

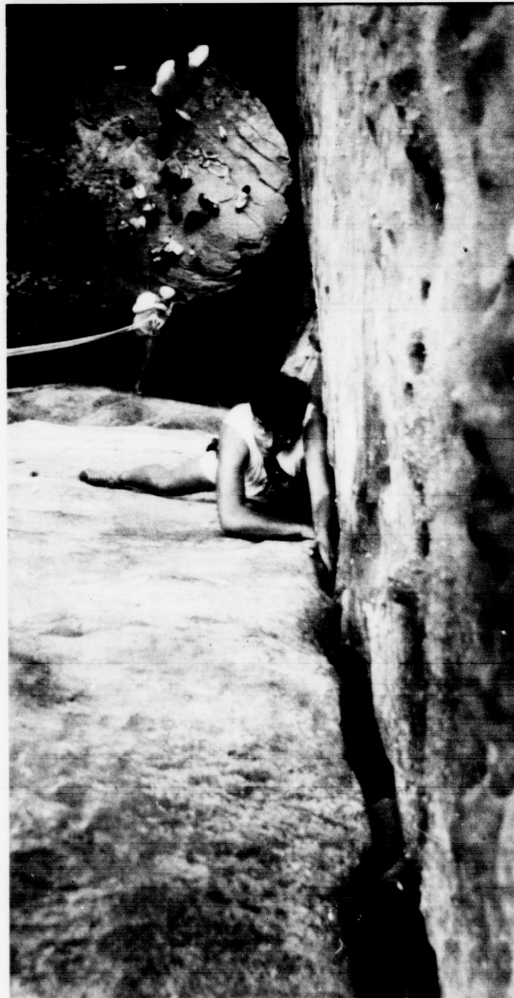
Lisa Gumm
UK Purchasing Division
(606) 257-3042

(For personal orders, add 5% sales tax)

PS/2 is a registered trademark of IBM Corp. Prices subject to change and do not include state and local taxes. Microsoft is a registered trademark of Microsoft Corporation. IBM reserves the right to make substitutions to the mouse. Logitech™ is a trademark of the Logitech Corporation.



Above, John Turbek, a UK computer science junior and rock-climber, walks through the Nada Tunnel in the Red River Gorge. Below, Turbek leads the climb "Calypso 2" on Fortress Wall.



It's something not too many other people do. (When you reach the top) it's an accomplishment.

**John Turbek,
Rock Climber**

RED RIVER GORGE, Ky. — If John Turbek said these words to you, you would probably think he was suicidal. But this is Turbek's idea of fun. Rock climbing is a demanding, difficult and dangerous sport where one mistake could cost you your life.

But for people like Turbek, it's the danger that makes it all worthwhile.

Turbek, like most rock-climbers, got interested in the sport by watching someone else do it.

"About four years ago I was at Red River Gorge, and I saw a guy rappelling," said Turbek, a computer science junior from Lexington. "A month later, I bought some equipment and tried it myself."

But he got bored with just rappelling (the act of letting himself down the side of a cliff) and started climbing up cliffs as well.

Now, he and a friend have about \$1,000 worth of equipment and go climbing in the gorge two to three times a week.

Kevin Harrison could write the same book as Turbek.

Harrison, a French major from Fort Thomas, Ky., got hooked on the sport in junior high after a friend from church took a group rappelling.

Rappelling is Harrison's speciality. But, then again, so is danger.

"I'm just an adventurous person, he said. "It's a big challenge — physically as well as mentally."

For example, each climb is given a certain rating, usually on a scale between 5.0 and 5.14, according to *Stones of Years*, a guidebook to climbs of the gorge.

According to the book, 5.0 is the easiest, 5.7 considered difficult, and 5.12 is "approaching unbelievable."

The first person to make a particular climb gets to name it — and give it that numerical rating.

To the inexperienced observer, most climbs appear to be a vertical face of rock with a narrow crack running up it. But most climbs aren't just vertical.

The more difficult climbs may

Rock climbing is more than just a hobby, it's living on the edge.



PHOTOS BY
ALAN HAWSE
STORY BY
JILL ROBERTSON

have a horizontal "ceiling" to follow or a sheer face of rock containing few toe or hand holds.

In order to make a climb one uses equipment weighing varying from five to 30 pounds — it all depends on the climb.

"If you've got a long climb you'd have to take everything — to make sure you have pieces to put in," Turbek said. "If you have a short climb, you know what to use, in which case you need only a couple pounds. It all depends on your familiarity with the route."

The equipment used includes a specially made nylon rope, a harness for the waist, shoes

designed for rock climbing, and, most important, the protection.

Once the protection is secure in the rock, then the carabiners are attached.

Carabiners are pieces of metal of assorted shapes and sizes and spring lock clamps to secure holding in cracks. The carabiners are attached to a loop of webbing which holds the rope.

"You don't use the equipment at all except to stop you if you fall," Turbek said. "You can climb just the same without the stuff. But if you fall, then you hit the ground and die."

The danger and difficulty of the sport is reflected by the names of the climbs: Black Death, a 60-foot climb with an overhang for those who like to travel horizontally with their hands; Cussin' Crack, also a 60-foot climb up a steep crack rated 5.7; Lunatic Fringe, which goes up a crevice, over a roof, and up a face to the top.

"The hardest climb we've made was 'Bombis Bursting,' which is rated 5.8," Turbek said. "The problem with trying a new climb is that you don't know whether you're ready for it or not. It is very easy to get in over your head."

But some take the sport more seriously than just a hobby.

Case in point: Martin Hackworth.

Hackworth is the author of *Stones of Years*, a guidebook to the climbs at Red River Gorge and resident of Lexington and has been climbing for 17 years.

He began climbing after reading about the sport in a novel. He became so fascinated in the sport he decided to give it a try himself.

"When I grew up, there were no guides," he said. "A couple of my friends have paid for their mistakes."

So he decided to write the book. And in his spare time, Hackworth has his own classes to prepare people at his store in the gorge.

"Climbing is a complicated sport — you need help to start," he said.

Hackworth has been climbing throughout the United States and Canada, including Yosemite Park and the Rocky Mountains of Colorado, although he says his greatest challenge was a climb in the gorge called Negative Energy.

"It took four years for me to figure out how to get up it," he said.

Right, Turbek unties his eight knot after climbing on Tower Rock. Below, Turbek pulls out a hexcentric — a piece of equipment used for protection.



SPORTS

Tom Spalding
Sports Editor

Volleyball team in underdog role against Texas-Arlington

By BRIAN JENT
Staff Writer

For the first time this year, the 10th-ranked UK women's volleyball team will go into a game as an underdog — and they love it.

UK will tackle No. 6 Texas-Arlington in the Methodist Hospital-Days Inn Red Raider Classic tonight in Lubbock, Tex.

"The pressure is on them. It is not on us," said UK coach Kathy DeBoer. "I would like our team to play with the type of reckless abandon attitude that people have been playing against us with. (We need) that go-for-broke, nothing-to-lose

type of attitude because that's how you beat teams ahead of you."

The Mavericks will have two key factors in their favor entering game. First, they will have an experienced edge over the Cats as they return five starters from last year's 32-7 team. Second, they have a psychological edge, according to DeBoer.

"I think they have a ton of reasons to want to get Kentucky," she said. "We beat them twice last year. The first time we embarrassed them here 3-0. The second time, we beat them 3-1 to eliminate them from the national tournament."

"Even though it's September and a year later, I think Texas-

Arlington is going to be out to get us."

UK will have to be prepared to face a quick Arlington offensive scheme.

"What they like to do is run a low fast attack which is very similar to the oriental style of play," DeBoer said. "The Chinese and Japanese play that way. They just never set the ball high, and everything is real quick. UTA does the same thing."

The Cats will have to counter the UTA attack with their height.

"Our advantage is that we are bigger than they are, but that's not an advantage if you're not in the right place at the right time," De-

Boer said. "We have been working on blocking a lot this week. We've been getting our team familiar offensively with some of the things that they do to try to get them in the right place. I think that is pretty much the key."

DeBoer feels that good hard serves will also disrupt the Maverick offensive set.

"You can only run that kind of offensive system when your passing the ball really well," she said. "We got to serve tough enough that it causes passing problems."

The Mavericks will be led by senior Ana de Oliveira.

"She is a big key for them. She has started every match since her freshman year. She is not an overpowering player, but she is a smart, aggressive and gutsy player," DeBoer said.

Besides Oliveira, Shawn Sweeton will help command a pesky Arlington offense.

"The other primary key for them is their setter Shawn Sweeton," DeBoer said. "She runs their attack. Decides who will get the ball and when. When you run a quick at-

tack, timing is everything, and that's your setter," DeBoer said.

Even though the match of interest is the UTA match, the Wildcats will not neglect the matches with Texas Tech on Saturday and Pepperdine on Sunday.

"The UTA match is the match of primary concern right now," DeBoer said. "I am concerned about us focusing all our attention and energy on UTA and not having anything left for the other matches."

"Texas Tech is very similar to an Ohio State or an Oklahoma. They're good enough to beat us."

CATCH THE ACTION AT

803!

Before or After the game!

Friday Happy Hour
25¢ Draft
\$1.85 pitchers
\$1.00 mixed drinks
25¢ Kamikazes
Daiquiri Bar on Patio
Free Hors D'oeuvres
From 3-8:03

BEAT KENT STATE!



Waller Ave./Imperial Plaza

438 S. Ashland Ave.
Chevy Chase

269-4693
Minimum Delivery
Order \$3.25



\$10 charge on all cold checks

HOURS
MON-THUR 10 a.m. to Mid
FRI-SAT 10 a.m. to 1 a.m.
SUNDAY 11 a.m. to Mid

DELIVERY HOURS
MON-THUR 11 a.m. to 11:30 p.m.
FRI-SAT 11 a.m. to 12:30 a.m.
SUNDAY Noon to 11:30 p.m.

The Administration
Chips & Drink
Reg. \$5.43
Now **\$4.92**
exp. 10/31/88

The Falconer
Chips & Drink
Reg. \$6.19
Now **\$5.73**
exp. 10/31/88



Sonny's

REAL PIT BAR-B-Q

\$4.50 SUNDAY SPECIAL
ALL-YOU-CAN-EAT CHICKEN (11 a.m.-9 p.m.)
(Served with french fries, cole slaw, Bar-B-Q beans & garlic bread)
DINING ROOM ONLY

\$4.99 MONDAY SPECIAL
ALL-YOU-CAN-EAT PORK
(5 p.m.-9 p.m.)
(Served with french fries, Bar-B-Q beans & garlic bread)
721 Red Mile Rd. • 281-6024 DINING ROOM ONLY

GO CATS!!!

GO BIG BLUE

Biscuits & Sausage
or
Biscuit Sandwich
Served 'til 10:30 a.m.



Each coupon good up to 4 items on this visit. Not valid with any other offers or discounts. Limit one coupon per purchase. Offer good at 2 Lexington locations: 2300 Palumbo Dr. and Lane Allen Rd. Expires: Oct. 1, 1988.

69¢

Double Cheeseburger



Each coupon good up to 4 items on this visit. Not valid with any other offers or discounts. Limit one coupon per purchase. Offer good at 2 Lexington locations: 2300 Palumbo Dr. and Lane Allen Rd. Expires: Oct. 1, 1988.

99¢

Also hiring at both locations

FUTONS

FUTONS, FRAMES, COVERS!



Chair or Sofa by Day. Bed by Night!

Priced from \$99⁹⁵ Twin

contemporary galleries

350 East Main St.,
Lexington, Kentucky
40507
Mon. thru Sat. 10-5:30;
Thur. Evening till 8:30
(606) 252-0808

TOYOTA
presents
THE U.S. OPEN POLO CHAMPIONSHIP

POLO

An Event for Everyone!

Enjoy the fun, festivities, and pageantry of championship polo! Picnic and enjoy the day at the Kentucky Horse Park while seeing the national U.S. Polo Championships, for the first time ever in Kentucky.

SEPTEMBER 24
U.S. Handicap Final
C.V. Whitney Cup

SEPTEMBER 25
FINALS! Co-promoter: WKYT-TV

GENERAL ADMISSION TICKETS: \$10
Available at area Dawahares stores, or at the gate. Children under 12 FREE!

All events begin at 3 p.m. at the Kentucky Horse Park. For ticket and event information call (606) 259-9357.



Brought to you by our corporate sponsors:
TOYOTA • COCA-COLA • FIMM'S • NATIONAL CAR RENTAL • MARRIOTT'S GRIFFIN GATE • BLUEGRASS MAGAZINE • US POLO ASSOCIATION

Cats can't look past Kent State

By BARRY REEVES
Contributing Writer

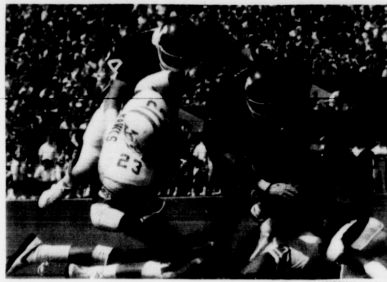
If a Homecoming crowd and a UK football team on a two-game losing streak are looking for a blowout of little known Kent State, then both could be badly mistaken. UK's defense better be ready to dig in when the kick-off rolls around at 1:30 p.m. tomorrow at Commonwealth Stadium.

"If we take this team lightly, they cannot only beat us, but they can beat us bad," UK senior cornerback David Johnson said.

There's a good reason why. Kent State averages over 252 yards per game on the ground and over 26 points a game. Most of that comes from Kent coach Dick Crum's wishbone-option offense that tries to rattle opposing defenses, and usually does.

"They run every option known to mankind," UK coach Jerry Claiborne said.

The Golden Flashes, 2-1, are led by sophomore quarterback Patrick Young, a 5-foot-8, 169 pounder who has gained 283 yards on the ground and thrown for 288 yards — and has impressed at least one UK coach.



UK running back Alfred Rawls dives over the top last week against Indiana. UK will take on Kent State Saturday at 1:30 p.m.

"He is one of the most exciting football players I have ever watched on film," Claiborne said. "He is very strong and has a strong arm. He can throw the ball long or he can throw it short."

Kent State will also use the services of senior tailback Eric Wilkerson who averages 109.6 yards rushing a game, and lead his team last year in receptions with 23.

The place that gives UK an obvious advantage is in the size of the line. The Kent State line averages 4, 247 pounds compared to UK's 64, 271-pound offensive lineman average.

The question, though, is whether

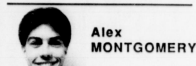
the Wildcats can use that as a plus, especially only 90.1 yards a game.

Claiborne announced earlier this week that senior quarterback Glenn Fohr will get the start over junior Chuck Broughton in Saturday's game, despite his poor performance in the Indiana game.

Fohr has connected on only 43 percent of his passes — including a three of 14 performance against Indiana last Saturday — but don't just blame him, Claiborne said.

"When you look at the game film, Glenn wasn't that bad. He had some good passes dropped," Claiborne said.

Flashes are no powerhouse, but then again neither is UK



Alex MONTGOMERY

It's gut-check time, part two. When UK meets Kent State Saturday at Commonwealth Stadium, it will be do-or-die time for Coach Jerry Claiborne and his not-so-wild Cats. With a loss, Kentucky can kiss any chance of a winning season good-bye.

After a hard-fought defeat at Auburn two weeks ago, everyone expected a tough Indiana-Kentucky battle last Saturday. The battle lasted only the first half.

An extremely fired up Hoosier team came out in the second half and KO'd the Cats 36-15.

"What happened?" "We didn't do the job we should have done," Claiborne said.

No kidding, Jerry. "The morale just wasn't there," said defensive guard Jerry Bell.

It's beyond me how a team like UK cannot be fired up to play a rival like Indiana. Especially after all the mouthing IU Coach Bill Mallory did. How much more incentive does a football team need?

A big win would give UK the momentum it needs as it heads into the "meat" of its schedule against six tough Southeastern Conference schools. But first the Cats must get by Kent State, which is no "cream puff."

Coach Dick Crum's Golden Flashes were picked to win the Mid-America Conference this season. Kent State would come into Lexington undefeated, had a last-minute rally not fell short in its 21-14 loss at Eastern Michigan.

Before last weekend's loss, Kent State had outscored its opponents 68-35 in its first two games.

Crum's main man in his wishbone-option offense is slippery little quarterback, Patrick Young. He is listed at 5-8, but if he's that tall, I'm Mamie Bol.

Young may be little in size, but he's big in ability.

The sophomore quarterback leads a Kent State offense that rushes for an average of 302 yards a game, 12th best in the nation.

Young himself averages eight yards per carry, and more than nine yards if you take away the sacks.

One of the things that worried Claiborne after UK's defeat at Indiana was the inability of the Cat

defense to pursue and catch Hoosier quarterback Dave Schnell.

If the UK defense had trouble snagging Schnell, then it will have double-trouble with Young. Catching Young is like catching fish — with your hands. It won't be easy to reel the little guy in.

"They run every option known to man with this little kid," Claiborne said.

Alex Montgomery is a journalism junior and a Kernel sports columnist.

ABOUT THE GAME

Match-up: Kentucky, 1-2, vs. Kent State, 2-1.

Time: 1:30 p.m. Saturday.

Place: Commonwealth Stadium.

Radio: Live on the Kentucky Radio Network, WLW-700 AM with Caewood Ledford and Ralph Hacker.

DECLARATIONS

Antony's Pizza

On the Overpriced Pizza Chains

FREE DELIVERY

Antony Says:

"We challenge any one to meet or beat our prices and taste."

"We will honor any pizza coupon or offer in town."

"We want the students at UK to know who makes the best tasting pizza."

"Why call anybody else?"

Any Size
One-topping Pizza
\$5.75
Limit 10
233-7670
513 W. 3rd St.
Exp. 9/30/88

COLISEUM LIQUORS

DISCOUNTS EVERY DAY DRIVE-UP WINDOW

Avenue of Champions at Rose St.
9 a.m.-1 a.m., Mon.-Sat.
252-8831

Giant Wine Sale! Starting at \$1.95

750 ml Popov Vodka \$4 ⁹⁹	750 ml Kahlua \$10 ⁹⁹
750 ml Seagram's 7 Crown \$6 ⁴⁹	750 ml Ten High Sour Mash Bourbon \$4 ⁹⁹
12-packs Miller, Lite & Genuine Draft \$4 ⁹⁹	24 returnable bottles Old Milwaukee \$5 ⁶⁹

IN WILDCAT COUNTRY ... IT'S KENNEDY BOOK STORE
FOR ALL YOUR SOUVENIR NEEDS

SHOW YOUR "BLUE"
In The Home or In The Stadium

Kennedy Book Store

WILDCAT FANS, Wildcat Football Season is here. Help support the team, "SHOW YOUR BLUE," at this week's game. Make Commonwealth Stadium a Sea of Blue Mania. KENNEDY BOOK STORE has all your "Blue" souvenir needs. We will be open 8:30-12:00 on afternoon football games to supply your Wildcat Souvenirs.

"SHOW YOUR BLUE" KENNEDY BOOK STORE

ACDC

BLOW UP YOUR VIDEO WORLD TOUR
with special guest CINDERELLA
SATURDAY, OCT. 22 8:00 • Rupp Arena
All seats reserved \$15.75
Tickets available at the Arena Box Office
and all Ticketmaster Locations including Disc Jockey
and all the usual in and out of town locations.
Charge: 233-3535 or 1-800-284-3030

Soccer team has new field, attitude

By BARRY REEVES
Contributing Writer

The UK soccer team has a new home — for now.

The team has made a move to a vacant field at the Shively Sports Center. The players are practicing and playing their home games on a field next to the UK track. The field allows them to have an adequate place to host their home games.

"Hopefully, it will give the UK soccer program a rebirth to have this place to play," UK sophomore fullback Doug Koop said.

"It (the new field) is great. It is one of the best around," said UK halfback Steve Fiske.

The team hopes that people will be more interested in participating in the UK soccer club as well as watching it play.

"We hope people will be more interested in our program," junior forward Shawn Magsis said. "And more people will come out and watch."

The club had problems getting other teams to come to Lexington and play because of the condition of the old field. It had large tire ruts because the field also doubled as a parking lot during home football games.

"We were more or less embarrassed to ask other teams to play here because of the shape the old field was in," Koop said. "A lot of injuries can happen when a field is in as bad a shape as the old one is in."

The only problem with the new field is that the team does not know whether it is a permanent home. They must ask for permission from the University to use the new field before each game.

"We just hope we can use the new field. It really is a great help," Koop said.

The other problem that the UK soccer club is facing is its existence. The club is on the verge of extinction. The members are hoping that the new field at Shively will help their situation.

"Every little thing helps," junior forward Tommy Flanagan said. "But I would say that our chance of survival is still 50-50."

The new field has a much better place for spectators to watch the game because of a large hill adjacent to it.

The UK soccer team's next home game will be Saturday, Oct. 1, at 10 a.m. when it battles Georgetown College. There is no charge for UK students with a validated ID card.



ALAN HARVEY/Kentucky Star

A UK soccer player fires the ball past an Asbury defender in a game Tuesday at the soccer field in the Shively Sports Center.

UK baseball team to tackle Eastern today

By BOB NORMAN
Contributing Writer

The UK men's baseball team will continue its fall baseball season tonight with a home game against the Eastern Kentucky Colonels at Shively Field. Game time is set for 7 p.m.

Kentucky, 2-0, is coming off a sweep of Marshall University Tuesday night in Lexington.

Eastern Kentucky is playing its first game of the fall season.

UK whipped the Colonels last fall by a score of 18-5. But last spring the Colonels got a bit of revenge by edging the Wildcats, 3-2.

This week's sweep of a the Thundering Herd ran UK's consecutive fall win streak to 17 over two seasons. UK hasn't played on the road in the fall since 1986.

UK coach Keith Madison was pleased by his team's performance in the season opener.

"We played well, and the pitching was solid," he said. "Our main goal is to play a lot of people, particularly new recruits."

One of the new players is junior college transfer Keith Conrad, a transfer from Miami-Dade Community College in Florida.

Conrad got his first hit in the first game to break a tie and send the Wildcats to a 4-1 victory.

UK edged the Thundering Herd in the nightcap, 3-2.

Also showing fine performances in their first games in a Wildcat uniform was freshman pitcher Billy Vanlandingham and junior college transfer Rod Bolton.

Vanlandingham nailed down a victory in the opener by pitching three strong innings, giving up just one hit and one run.

Bolton, a junior newcomer, pitched the last four innings, allowing only three hits and notched his first save.

The Kentucky Kernel
For Students
By Students
About Students

shoppers VILLAGE LIQUORS

PARTY WEEKEND CELEBRATION!

SAVINGS, SERVICE & SELECTION AT YOUR NEIGHBORHOOD SHOPPERS

Bacardi 80° Light or Dark Rum	1249	1.75 Liter
Shoppers Vodka 80 Proof	799	1.75 Liter
Early Times 80 Proof 1.75 Liter	10.77	Sale Price 12.77 Less Rebate 2.00 Net Cost
Tanqueray 94 Proof Imported Gin	1059	750 ml.
Seagram's Wine Coolers	279	4-Pak
Gallo 3-Liter Premium Table Wines	539	3 Liter
BEER FEATURES		
Michelob Regular, Light or Classic Dark	299	6-Pak NR
Miller Regular Lite or Genuine Draft	529	12-Pak NR

CLOSEST TO CAMPUS:
Chevy Chase Place • 866 E. High Street

CHEVY CHASE PLACE • 269-3003
VERSAILLES ROAD • 233-1060
CROSSROADS PLAZA • 272-6309

NORTH BROADWAY • 293-0344
CHINGE VILLAGE • 268-3200
LAKEVIEW PLAZA • 266-9157

Sale Prices Good Thru Wednesday • 28 RR. All Taxes Included in Prices. Quantity Rights Reserved.

GO BIG BLUE!

Carl's Music Center
has the best prices in town
20% off
most items

1125 Winchester Rd.
Next to Hardee's
254-0324

THE LOCKER ROOM
sporting goods
SUPPORT THE CATS!
Buy your Kentucky Sweatshirts and Jerseys at the #1 Sportswear Store.

Save time & money on your greek jerseys, jackets and sweats.

Specials at our Newly Remodeled Campus Store

CAMPUS
304 S. Limestone 252-8312

739 Lane Allen Rd. 276-1101

Super Sale
on all brands — as low as \$99.95

Peugeot
12-speeds & mountain bikes only \$20 over invoice

Tenth Gear
828 Lane Allen Rd.
Garden Springs Shopping Center • 278-1053

THE IMAGE MAKERS
For ALL your favorite hair cuts & styles
(Near UK Med. Center)
923 1/2 S. Limestone
just drop in or make an appointment

254-6373

BARE WALLS?
An Inexpensive Solution

Nice Quality Posters - prices from \$9.98

"Clippety Strips" Hang a poster without a frame \$3.00

Come on out to Joseph-Beth Booksellers for one of the most extensive selections of fine art and photographic posters in Lexington, many selling for as little as \$9.95. And while you're here, stay cool and browse through over 53,000 book titles and a quality selection of out-of-town newspapers, maps, magazines, greeting cards, books-on-tape, and classical music.

Joseph-Beth Booksellers

The Mall at Lexington Green/Nicholasville Rd. at New Circle (606) 273-2911

WF
The WWF Returns to Lexington!

WORLD WRESTLING FEDERATION*
Sat., Sept. 24, 1988, 8 p.m., Rupp Arena
★ Main Event ★

74", 520-pound
Hacksaw Jim Duggan -VS- Andre the Giant

Brutus "The Barber" Beefcake vs. Outlaw Ron Bass
Powers of Pain vs. The Bolsheviks
Plus lots more action!

TICKETS ON SALE NOW! \$11, \$9, \$7
Available at Rupp Arena Box Office and all Ticketmaster Outlets.
Charge by phone at 233-3535 or (800) 525-5900.
Watch WWF Superstars of Wrestling on WKYT-TV Channel 27 Saturdays at 11 a.m. and WWF Wrestling Challenge on WYMT-TV Channel 57 Saturdays at 7 p.m.

STUDENT LOANS

Frankel's Jewelry & Pawn

253-CASH

Hoover shoots for top

Continued from Page 1

were successful from the start," UK track coach Don Weber said. "Looking back on it, in a lot of ways it might not have been the best thing for them to be successful. But (Sherry) definitely wasn't a typical freshman."

In the process of making a name for herself, Hoover also left behind some of the Indiana girls she was in awe of only years earlier.

"When I looked around to see where the other girls I competed with in Indiana were, I never heard anything about them," she said. Runners in the UK program don't just run cross country in the fall. The year also consists of an indoor and outdoor track season.

That's where Hoover established herself. Although she came close to earning All-America honors in cross country (Hoover missed it by one vote in 1985 and 1986), she became a force on the track.

In two seasons at UK, she broke school record after school record, gathering five All-America awards in the process.

The only problem was the trophy case in her mom's home was getting too full.

"We had them up on the shelves but it got too crowded," Hoover said. "Mom said it was time to put them away."

Hoover slashed away her memories in a big box in her garage. She didn't stash any talent.

After red-shirting the 1987 cross country season because she wanted to concentrate on her studies, Hoover came back determined to be better than before.

Four months later, Hoover broke a school record in the prestigious Drake Relays with a personal best time of 4:15.11 in the 1,500 outdoor meter race.

Then in the Kentucky Relays last spring, Hoover achieved another record.

Running into a strong wind and coming off two sleepless nights after studying for an organic chemistry test, Hoover snapped a meet

record by flying in at 2:04.79 in the 800 meters. She also qualified for the 1,500 meters, earning a trip to Indianapolis, Ind., and the U.S. Olympic Trials.

"It was a taste of track and field at its highest level," Weber said. "In many ways our Olympic trials are more competitive than the Olympics. It was, I think a significant accomplishment to qualify and get there."

Hoover ran both the 800 and 1,500 races — and finished a distant seventh in both.

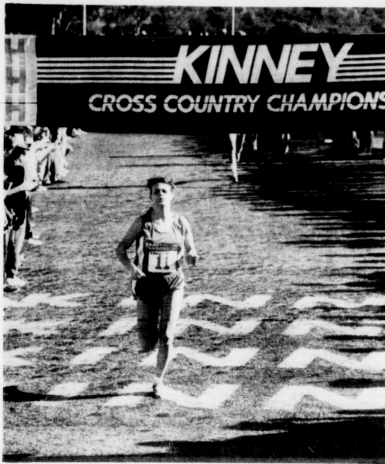
But she came close. Hoover was right with eventual winner Kim Gallagher for 600 meters, but Gallagher's experience proved too much.

"I knew I hadn't run my best time but I was glad to have raced them for 600 meters," Hoover said. "I was just really drained, mentally. I didn't want to go out there. I didn't want it. . . For the first time, I didn't want that."

The Sherry Hoover that came out of Indianapolis wasn't the Sherry Hoover that went in.

Sherry Hoover, the almost-Olympian, five-time All-American, UK female athlete of the year, has decided to hang up her running shoes when her eligibility runs out in a little more than a year. She's dreaming of engineering books, not eight-mile runs.

"I don't know now that if I could give it up, knowing that I have a year and a half left," she said. Hoover will continue to run. But



UK sophomore Denise Bushallow, shown above, is expected to be a big part of the UK women's cross country team this year.

she has made a choice, and wants to stick with it.

"Everyone dreams, but there is a point when you can put all your

want in a dream and make it come true," she said. "or look toward other things and other dreams that you have, and you have to pick what you think is most important."

UK runners have talent, high hopes

By TOM SPALDING
Sports Editor

Heading into this season, there are not too many things going against the UK men's and women's cross country teams.

They both have an excellent mixture of talent and experience, speed and youth, and are relatively injury-free heading into Saturday's Kentucky Relays at the Kentucky Horse Park.

Both teams have a bevy of All-Americans and both are shooting for a Southeastern Conference title — maybe even the national crown.

"We should be a strong contender to win the SEC," UK track coach Don Weber said. "We should be competitive because we didn't lose anybody from last year."

So, then, if everything is so good, what could go wrong?

"Well, last year, one mistake we made was everybody got fired up about the SEC," UK sophomore Jim B. Kaiser said.

The high hopes didn't materialize. Kentucky finished in the middle of the pack so

even with the bright outlook, UK runners aren't getting their trophy cases out early.

"It's in the back of our minds," he said. "But I think everybody has a positive outlook."

It'll be up to Weber and his assistants, Gene Weis and Charlie Schultz, to harness a basket full of talent.

That harnessing begins Saturday.

The men will feature seniors Richard Ede, Joe Butler and Benny McIntosh. Also on the 13-man roster is junior Russell Nally and sophomores Jim B. Kaiser and Charlie Kern. Don't be surprised to see a lot of positions switching back and forth.

The women, on the other hand, are stocked with talent. Just check the roster: From Lisa Brodwing to Patricia Padorno, from Denise Bushallow to Sherry Hoover and from Kim Hawkins to Lynne Segreti, it's safe to say this team is loaded.

"This is the first year we've had a shot for (both the men and women) in same year," Weis said.

Zenith rolls to campus The Truckload Sale on Portable Computers

Zenith, the most respected name in electronics, eighteen-wheels to you the biggest event of the year. If you're in the market for a personal computer or have questions on what one can do for you, Zenith's truckload sale is your answer. It's an opportunity that can't be missed!

Purchasing a computer was never so inexpensive.

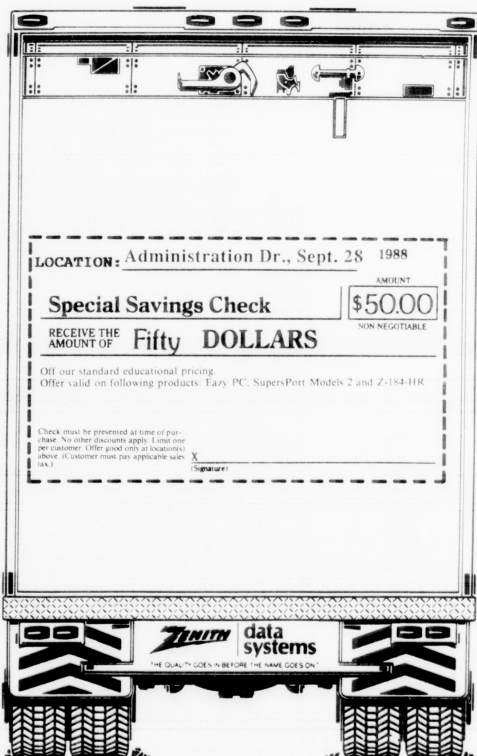
Come and immediately take advantage of the lowest prices ever on personal computers. Now for a limited time Laptop PCs are available at super savings and, now, buying a computer becomes easier than ever on your budget. Having trouble deciding which system would be the most beneficial? Zenith representatives will be holding demonstrations continuously on all personal computers, making your choice best suited for your needs.

Purchasing a computer was never so easy.

Not only will the truckload sale bring you unprecedented prices, it allows you instant delivery. Or, if the computer you have in mind is not on the truck, you can place an order right on the spot. Plus for the first time, Zenith Data Systems is now accepting Visa and MasterCard.

Purchasing a computer was never so inexpensive, easy, and clearly designed with you in mind.

It's the computer event of the year. The Zenith Truckload sale.



SAVE ON:



ZWL-184-HR

- 80C88 microprocessor
- Modular configuration that adapts to your computing style
- Lightweight, economical portability
- Detachable battery and AC adapter/recharger
- Intelligent Power Management™ to control battery consumption for hours of non-stop operation
- MS-DOS® for PC/XT software compatibility
- 640K RAM —
- Dazzling back-lit LCD screen for superior readability in a CRT-size display
- Ideal for large spreadsheets, word processing and flexible desktop performance anywhere on campus.

• MS-DOS is a registered trademark of Microsoft Corp.

Qualified Buyers*:

* College University faculty, staff, students and University purchase orders.

* Individual purchases limited to one computer system per twelve month period. Education Identification Required

We Accept:

• Certified Checks

• Money Orders



Truckload Sale Only
Sept. 28, 1988

DATE: 9/28/88
TIME: 9-5
PLACE:
Administration
Drive

Form No. 1809-788

Homecoming Specials

- Good thru 9/24
- Rose Corsages \$4 and up
 - Mixed Bouquets \$4 and up
 - 1/2 Dozen Roses \$12.50
- April Flowers Florist**
Dudley Square
254-7814
(one block from campus)

FISTER & ASSOCIATES REALTY

- \$65,000 THE EVERYTHING TOWN-HOME! Everything means it's already decorated and includes mini blinds, fireplace and large bedrooms.
- \$64,000 "OWN A TOWN HOME!" 1500 sq. ft., 1 car garage & fresh as a daisy! Comes with stack washer/dryer.
- \$61,500 ASSUME LOAN - plus great investment property! 2 bedroom, 1 1/2 bath townhouse with furnished kitchen, washer/dryer & fireplace.
- \$49,900 THIS IS IT! Possible owner financing on this beautifully decorated townhome featuring 3 bedrooms, 2 baths, deck and much more.

WORSHAM THEATRE

ADDICTION
Today through Sat. — 7:30 p.m.

REPO MAN
Today through Sat. — 10 p.m.
Sun. — 7 p.m.

Admission \$1.95
for more info call 257-1287

UK

STUDENT SPECIAL!
All You Can Eat
GRAND \$4.69
BUFFET



5 Minutes from Campus!
Southland Drive

Three Wildcats headed for Southern tennis tournament

By SALLY MACY
Staff Writer

The UK men's tennis team swings into action this weekend, as three members of the team head for the Southern Interscholastic Tournament in Athens, Ga.

During the fall season only certain players are selected to travel to the away competitions due to NCAA regulations. All action is on an individual basis, with the official team season beginning in January.

The traveling players include sophomore Sammy Stinnett and freshmen John Yancey and Andy Potter.

"I chose those three because John and Andy need the experience on those courts," UK coach Dennis Emery said. "That's where the (NCAA Championships) are held in May, and Sammy is doing very

well so I want him with the younger ones."

Stinnett, out of Bessemer City, N.C., is one of the Cats' top returners. He is expected to play in the team's No. 4, 5, or 6 position this season.

Yancey, out of Grosse Pointe, Mich., is coming off a big win in the Junior U.S. Open Championships, capturing the doubles title held earlier this month. Yancey is penciled in at the team's No. 3 position, with returning All-American seniors Richard Benson and Mario Rincon ahead of him.

Potter, out of Lakewood, Colo., hasn't had much action this season and is hoping to turn some heads this weekend.

"I'm sure they will do well in Athens, I think Coach Emery is just getting them used to the pressures of collegiate tennis down there," Rincon said.

Emery, entering his seventh season as coach of the Wildcats, boasts an impressive record of 130 wins to only 69 losses. Emery's Cats are ranked sixth in the country in the preseason polls, despite the loss of Greg Van Emburgh, who recently turned pro.

Other Cats making the rankings include Rincon out of Bogota, Colombia, ranked at No. 14 in the nation's singles rankings, while Benson and Yancey are No. 22, and No. 46, respectively.

Although the loss of Van Emburgh will be felt by the team, they have a great deal of talent and the potential to be a national contender, Emery said.

"We definitely have the desire to win the NCAA's this year," Rincon said. "But we just want to take it one match at a time and not get too confident."

Hurricane Gilbert causes storm of controversy for league teams

By ED SHEARER
Associated Press

ATLANTA — Will Hurricane Gilbert have an effect on Southeastern Conference football eight days after blowing ashore in Mexico?

Watson Brown thinks it might. Alabama, citing the threat of the hurricane, elected not to travel to Texas A&M last weekend, postponing the game until Dec. 1.

It enabled the Crimson Tide to get in an extra day of work in preparation for its SEC opener against unbeaten Vanderbilt Saturday.

Brown has made the Commodores a much better team than they've been lately, but it's doubtful they're good enough to

beat the Tide in Tuscaloosa. Alabama 31-17.

The SEC teams had an 11-2 record last week, dropping the season total to 30-4, an 88.2 percentage.

Elsewhere around the Southeast this week:

Tennessee at Auburn — If ever there was a blowout waiting to happen, this is it. Tennessee already is reeling from three knockout blows this season, two of them expected, another not. Everything points to an easy Tiger triumph, which seems to be a good enough reason to label this a near upset.

Mississippi State at Florida — Tony Shell surprised Georgia with his passing ability in his college debut last week. He

won't catch the Gators off guard. Florida 24-10.

Georgia at South Carolina — Mr. Shell's antics against the Bulldogs (four TD passes) couldn't have come at a better time for Vince Dooley. He'll have the attention of the defense this week getting ready for Todd Ellis of the Gamecocks. Georgia 34-24.

Kent State at Kentucky — After two road losses in a row at Auburn and Indiana, the Cats are glad to be home again. Kentucky 21-7.

Louisiana State at Ohio State — Mike Archer hopes he can convince his Bengals that the Buckeyes aren't as bad as they looked in the 42-10 loss at Pittsburgh last week. LSU 17-7.

CHARLIE BRONNINS
Restaurant and Lounge

WORLD FAMOUS CHEDDAR BURGERS
Drinks by the Liter

Hours:
Mon-Sat. 11 a.m. - 1 a.m.
Sun. 1 p.m. - 11 p.m.

Come visit the new deck
816 Euclid Ave. Chevy Chase

CUT CORNER Wide Selection
New & Used
LPs, Cassettes,
CDs!

Hard-to-find videos

377 S. Lime • 273-2673
Mon-Sat 11-9
Sun 12-6

Bob Evans RESTAURANT

Be Part of the Bob Evans Team ...

Now Hiring For:
• Hosts and Hostesses
• Waiters and Waitresses
• Dishwashers and Buspersons
• Cooks

We Offer:
• Flexible Scheduling
• Uniforms
• Discounted Meals

Apply in Person
2-7 p.m.

New Circle Rd.
at Richmond Rd.

I-75 at Winchester Rd.
(Exit 110)

TAN YOUR HIDE
• Tanning Salon •

8 SCA Wolff Beds • Open 7 Days A Week
Located above Tolly-Ho
M-F 9-9 • 233-9957 • Sat & Sun 10-6

Chevy Chase Florist
Homecoming Flowers

879 EAST HIGH STREET
(606) 266-2136

10% discount for UK students
ON LOCAL ORDERS ONLY

Randi's Boutique
Sportswear & Accessories

20% discount with this coupon
Good through September 30, 1988

852 E. High St.
266-5647

We have a fantastic selection of Handbags By

Liz Claiborne 20% off reg. price

Handbag House

Imperial Plaza - Waller Ave. • 252-3123
A short walk from campus

Aerobic Instructor Workshop with Jeannie Thé

Sunday, Sept. 25th 4 p.m.-6 p.m.
FEE: \$20.00 - \$5.00 back to those who audition

AUDITION and/or INTERVIEWS
Monday Sept. 26th 7:00 p.m.

Chevy Chase Fitness Studio
Chevy Chase Plaza 3rd level - Free Parking
268-4844

Call Jeannie Thé for further information

Second location opening in October at The French Quarter Square
(Richmond Road next to Applebees)

the barber shoppe
203 south limestone

10% student discount

Offering everything from clipper cuts to spiral wave perms!

252-7847

DOLLAR RENT A CAR
606-269-4634

Announcing:
Discounted weekend and daily rates to students and faculty.

\$18.00 and up

- New Cars
- Free Mileage
- Compact Cars
- Sports Cars
- Luxury Cars
- All Types of Vans

\$15.00 automatic autophoresis

receive \$15 every time you donate plasma. experience a new, easier way to donate, too.

plasma alliance
2043 Oxford Circle
Lexington, KY 254-8047

HOURS: Mon-Thur - 8 a.m.-8 p.m.
Fri - 8 a.m.-5 p.m.
Sat & Sun - 8:30 a.m.-2 p.m.

A Homecoming is where the Sweetheart Roses are!

Coupon
1 Dozen Sweetheart Roses \$4.95
W/Coupon \$5.95 cash and carry

Oram flowers 850 East High St. Phone: 266-2181

GO CATS!

Snoopy's BAR & GRILL

HOMECOMING SPECIALS

- Brunch 10:30 a.m. to 3 p.m.
- Burgers
- Potato Skins
- Nachos
- Serving dinner till midnight Saturday
- London Broil \$8.50
- Hot Brown \$6.75
- Filet Mignon \$8.50

345 Romany Road
Lexington, Ky. 40502
268-0709

the UNIVERSITY CLUB

GO CATS. BEAT KENT STATE

Join the U-Club before or after the game

\$1.25 longnecks
\$3.00 pitchers
\$3.00 Sangrias

BBQ Chicken Sandwiches \$3.50



Board violated by SGA

Continued from Page 1

Senator at Large Kennedy James said when he asked about the legality of the amendment he was told by SGA President James Rose that it was constitutional.

"I really believe we overstepped our boundaries (Wednesday) night," James said. "I'm one to go by what the J-Board says... and they are trying to take away their power and that is wrong. What we're saying to the constitution is to go to hell and it doesn't matter any more."

Rose said he has spoken to Baker about the opinion and Baker told him the J-Board's decision only applied to his case. But Judicial Board Chief Justice Ken Walker said the Senate overstepped its jurisdiction by passing the amendment.

"I think there's obviously been some people who've followed wrong procedures in trying to get legislation passed," Walker said. "I find it very surprising that the Senate and President Rose think they have the power of judicial review. Given they have no power of judicial review it would appear our ruling would stand."

Walker and James also questioned basing the amendment on Baker's opinion because he does not specialize in the SGA constitution.

"I'm just starting to get the feeling that there's a lot of in-house issues. I really had high hopes, but it seems that we're more interested in serving ourselves than serving the students," James said.

Homecoming weekend

Continued from Page 1

Bluegrass Field, said it was hard to tell whether the increases were due to the game or other activities planned for the weekend.

"From the look of the (rental) manifest, it seems like quite a few people are coming into town," Wheat said. He pointed out that usually car rentals decline toward Thursday as the business week ends.

"The increase could very well be because of the game," he said, "but it could also be due to the harness racing starting (tonight), or because people came into town for the last of the polo matches, which is Sunday."

Wheat said it was not uncommon for several events in Lexington to be coordinated to attract visitors, and that the weekend of Oct. 8 is a prime example. That weekend, he said, harness racing ends Friday night, Keeneland opens Saturday,

and the UK football team plays that night.

Tickets for the game are not exactly selling out either, according to Barbara Donnelly, UK football ticket manager. Donnelly said that not including student tickets and season passes, about 3,000 tickets had been sold.

"That is about a normal amount of tickets for a home game," Donnelly said. "It depends a lot on who we're playing. The fact that Kent State is not bringing a lot of people has left us with a lot of extra tickets."

Donnelly said that of the 5,200 tickets allotted for Kent State students, only 200 have been taken.

"A lot of tickets have been charged this week," she added, "but tickets for the Alabama and Georgia games... so went on sale, and it's hard to tell which games are really selling."



GLASS HOUSE: Mandy Slack, a biotechnology senior, works in the greenhouse at Ag, North yesterday afternoon.

Alumni come back

Continued from Page 1

coming game has little significance to alumni activities.

"The Homecoming game itself is not a focus of the weekend for the alumni, Brumfield said. "This is basically a time for reunions, to see how styles have changed."

"People come back who haven't been here for 30 or 40 years and they don't recognize things. Gosh, the Student Center and now the Student Union Building then are two different animals," he said. "We used to play softball where the new Student Center is now."

Brumfield said that reunions used to take place at graduation time but they were moved to Homecoming weekend because there are more students around.

"We want to see the campus in full bloom, and the Homecoming game just happens to coincide with our reunions," Brumfield said.

Evans, who is heading the 50-year reunion activities, agrees that

the alumni come to see each other, not the game.

"There are 175 people coming to the reunion, about 65 of which are actual graduates from '38. Seventy-five to 80 percent of these people have not seen each other since graduation," Evans said.

"Our banquet will be on Saturday night and Dr. Roselle will speak... and I hope that he will stress academics over athletics," he said. "My purpose is to see the people. The game is not the central issue. Some of us will go, but most of us in my age and grade are far more interested in the academic side."

Evans said that alumni don't want the football game to be seen as the focal point of the weekend just because their reunions occur on the same weekend.

"I want to get rid of the impression that we're just here to see the game. The phrase 'the game' irritates me. To me this seems to lower the thinking of the alumni."

Byars hearing waived

Staff reports

The case of Centre College student Julia K. Byars was waived to a District Court grand jury yesterday in a preliminary hearing.

Byars, 19, was charged with first-degree wanton endangerment after police found an infant in a dumpster at the corner of Jersey and Euclid Ave. The infant had been in the dumpster 5-to-10 minutes before she was found, police said.

Byars, who entered a plea of not

guilty to the charges at an arraignment on Sept. 6, will go to the grand jury next month, according to her attorney.

The infant was released from the UK Chandler Medical Center Tuesday and is now living with foster parents in the Lexington area, said Brad Hughes of the Cabinet for Human Resources. The baby, named Rebecca by Med Center nurses, will remain with the foster parents until the Lexington Fayette District Court makes a ruling on custody.

Cheapside Bar

Enjoy Free Live Entertainment Every Night Inside or Sip Under the Stars Outside on the Patio.

This Friday & Saturday enjoy the Reggae/Pop sounds of **The Rotels**

Sandwiches & Appetizers Served 6 p.m.-Midnight

At the Corner of Short & Cheapside, Downtown

Really Live in Concert

L.A. GUNS

with special guests - Skinny Bones

TOMORROW NIGHT

9:30 p.m. - Tickets \$7 & \$9
\$2 discount with student ID

RHINESTONES Tickets Available At Disc Jockey Al Regency Ultr. Rhinestones, 1-76 at Albion Dornesboro Rd. 253-5535

SGA backs The Blue - Go Cats

BEAT KENT STATE!!

The Kentucky Kernel

Editor in Chief
Executive Editor
Associate Editor
Editorial Editor
Arts Editor
Sports Editor
Photo Editor
Adviser
Advertising Director
Assistant Advertising Director
Production Manager

Jay Blanton
Thomas J. Sullivan
Jim White
C.A. Duane Bonifer
Rob Seng
Tom Spalding
Randal Williamson
Mike Agin
Linda Collins
Jeff Kuerzi
Scott Ward

The Kentucky Kernel is published on class days during the academic year and weekly during the summer session.
Third-class postage paid at Lexington, KY 40511. Mailed subscription rates are \$30 per year.
The Kernel is printed at Standard Publishing and Printing, 534 Buckman St., Shepherdsville, KY 40165.
Correspondence should be addressed to the Kentucky Kernel, Room 035 Journalism Building, University of Kentucky, Lexington, KY 40506-0042 Phone (606) 257-2871.

For out-of-the-ordinary
gift ideas
For yourself or someone else

visit
J. LEE'S BEEHIVE - BATIKS, Etc.
315 W. Maxwell • 281-9444
1 Block from Dudley Square
Open Tues.-Sat. 10 a.m.-6 p.m.

- * Colorful all-cotton Batik Clothing for Men and Women From Indonesia, Malaysia, Lexington - hand-made and perfect for summer wear
- * Unusual imported jewelry, including cloisonne, silver, leather, turquoise, painted wood, etc.
- * Hand-made Thai silk birds and cuddly stuffed animals
- * Unique hand-made greeting cards
- * Silk-screened shirts with Lexington and Kentucky logos (J. Lee designer and distributor)
- * Hand-thrown pottery

AND MUCH MORE

Hey Wildcats!

**Introducing
the Best
Pizza Value
on Campus**

Any Size One Topping Pizza for \$5.95 (plus tax) with coupon

You get:

- Free Delivery
- Guaranteed 30 Minute Delivery or your pizza is \$3.00 off
- Large 16 inch size (larger than most!)
- Real dairy cheese
- No check charge
- Open for lunch at 11:00 a.m.

Call us:

269-9655 **276-4437**
801-805 Euclid Avenue 1641 Nicholasville Road

<p>ANY SIZE ONE TOPPING PIZZA \$5.95 (plus tax)</p> <p>Get a 16" or 12" cheese pizza with one topping of your choice for \$5.95.</p> <p><small>Maximum toppings on regular pizza. One topping per pizza. Not valid with any special offers. \$3.00 off available only at 801-805 Euclid Avenue and 1641 Nicholasville Road.</small></p> <p>Expires: October 16, 1988</p> <p style="text-align: center;">DOMINO'S PIZZA DELIVERS FREE</p>	<p>ANY SIZE ONE TOPPING PIZZA \$5.95 (plus tax)</p> <p>Get a 16" or 12" cheese pizza with one topping of your choice for \$5.95.</p> <p><small>Maximum toppings on regular pizza. One topping per pizza. Not valid with any special offers. \$3.00 off available only at 801-805 Euclid Avenue and 1641 Nicholasville Road.</small></p> <p>Expires: October 16, 1988</p> <p style="text-align: center;">DOMINO'S PIZZA DELIVERS FREE</p>	<p>ANY SIZE ONE TOPPING PIZZA \$5.95 (plus tax)</p> <p>Get a 16" or 12" cheese pizza with one topping of your choice for \$5.95.</p> <p><small>Maximum toppings on regular pizza. One topping per pizza. Not valid with any special offers. \$3.00 off available only at 801-805 Euclid Avenue and 1641 Nicholasville Road.</small></p> <p>Expires: October 16, 1988</p> <p style="text-align: center;">DOMINO'S PIZZA DELIVERS FREE</p>	<p>ANY SIZE ONE TOPPING PIZZA \$5.95 (plus tax)</p> <p>Get a 16" or 12" cheese pizza with one topping of your choice for \$5.95.</p> <p><small>Maximum toppings on regular pizza. One topping per pizza. Not valid with any special offers. \$3.00 off available only at 801-805 Euclid Avenue and 1641 Nicholasville Road.</small></p> <p>Expires: October 16, 1988</p> <p style="text-align: center;">DOMINO'S PIZZA DELIVERS FREE</p>
--	--	--	--



Randal Williamson/Kernal Staff

Memories '87



Randal Williamson/Kernal Staff



Randal Williamson/Kernal Staff

(top) UK President David Roselle and his wife, Louise, wave to the crowd during their first Homecoming here last year. (right) Stephanie Strohmier enjoys her first moments after being named the 1987 Homecoming queen. (left) Strohmier, escorted by Tim Peterman, reacts when she first realizes she will become the UK Homecoming queen.

These Smiles Bonded by Dr. Flanagan

You Can't Help But Have Self Confidence, When You Have A Beautiful Smile!

Are your teeth chipped, broken, crooked, gray, yellow or separated by gaps? Correct these conditions with Cosmetic Bonding. One Appointment and it does! Hurry!

FREE CONSULTATION **DAVID A. FLANAGAN, DMD** 2620 Whitte Drive, Lexington 275-2111
Dr. Flanagan, a general dentist, now concentrates totally on Cosmetic Bonding

JOHNNY PRINT
547 S. Limestone
RESUMES
At Everyday Low Prices

Typeset Professionally, Promptly

Now offering laminating service to protect your valuables (posters, pictures and book covers)

254-6139

CHEVY CHASE COIN LAUNDRY

A Whiteway Laundry (UK's favorite Coin Laundry)
Open 8 a.m. to 10 p.m. Daily
Conveniently Located in Chevy Chase

- Drop Off Service
- Clean Modern Facilities
- Change Available
- Attendant Always on Duty
- Soap and Vending Supplies
- Clean Modern Equipment
- Air Conditioned for Your Comfort

312 S. Ashland Ave.
266-5721

GOOD LUCK TO ALL FRATERNITIES IN DELTA ZETA FRATMAN'S CLASSIC

And if the date goes well, remember ...

We can do wedding announcements

Happy Homecoming, UK

BesType
Typesetting Service
257-6525

SUN TANS

852 East High St., Lexington, Ky. 40502 (606) 269-9210

Special Tanning Rates

1 Visit	\$4.00	15 Visits	\$38.00
5 Visits	\$17.00	25 Visits	\$55.00
10 Visits	\$27.50		

The rates apply to full-time students with a valid UKID

1 FREE VISIT WITH THIS AD

Roses

Every in the form of a flower

Homecoming Special

\$9.98 per doz

(Cash and carry only)
Special ends September 30th

233-7486
ALL MAJOR CREDIT CARDS ACCEPTED

IMPERIAL FLOWERS
IMPERIAL SHOPPING CENTER
505 WALLER AVENUE
(Across from St. Joseph Hospital)
Hours: Mon. - Thurs. 9:00-5:00, Sat. 9:00-5:00
GUESTS: NO ALCOHOL - NO SMOKING - NO CHAIRS OFF BOULEVARD

big daddy liquors

WE CHECK I.D.s
Please have valid KY driver's license ready when making your purchase, thank you.

372 Woodland Ave 253-2202
Your Campus Party Headquarters

Chi Chi Margarita \$8⁹⁹ 1.75 liter all flavors	Fleischmann's Gin \$10⁹⁹ 1.75 liter
Wild Turkey 101 \$10⁹⁹ 750 ml	Meyers Rum \$8⁹⁹ 750 ml
Robert Mondavi White Zinfandel \$4⁹⁹ 750 ml	Tosti Austi Spumante \$7⁹⁹ 750 ml
Old Milwaukee 1/2 Barrel \$26⁵⁰ + deposit	Michelob \$3¹⁹ 6-pk n.r.

Key Beer Always in Stock!

USA Cinemas

NORTH PARK 233-4420	SOUTH PARK 272-6611
Married to the Mob 2:15-4:35-7:30-9:35 Fri/Sat 11:35	Dead Ringer 2:00-4:45-7:40-9:55 Fri/Sat 12:00
Nightmare 4 2:30-4:30-7:50-9:55 Fri/Sat 12:00	Nightmare 4 2:05-4:45-7:25-9:00-10:05 Fri/Sat 11:45
Coming to America 2:25-5:00-7:35-9:50 Fri/Sat 12:05	Die Hard 2:20-5:00-7:30-10:00 Fri/Sat 12:15
Kansas PG-13 2:30-4:55-7:25-9:40 Fri/Sat 11:55	Patty Hearst 2:25-4:50-7:25-9:30 Fri/Sat 11:25
Betrayed 2:05-4:40-7:30-10:00	Roger Rabbit 2:15-5:15-7:20-9:20 Fri/Sat 11:20
Die Hard 2:15-4:50-7:20-9:45 Fri/Sat 12:05	Cocktail 2:30-5:10-7:45-9:40 Fri/Sat 11:30
Young Guns 2:20-4:55-7:55-10:00 Fri/Sat 12:05	LEXINGTON MALL 269-4626
Dead Ringer 1:30-4:15-7:20-9:45 Fri/Sat 12:00	A Fish Called Wanda 2:00-4:15-7:35-9:35 Fri/Sat 11:30
Cocktail 2:10-4:20-7:40-9:40 Fri/Sat 11:45	Eight Men Out 2:30-4:55-7:25-9:50 Fri/Sat 12:05
Roger Rabbit 1:55-4:30-7:25-9:35 Fri/Sat 11:45	CROSSROADS 272-6111
FAYETTE MALL 272-6662	Moon Over Parador PG-13 2:15-4:50-7:40-9:45 Fri/Sat 11:40
Betrayed 2:00-4:30-7:15-9:45 Fri/Sat 12:05	Young Guns 2:00-4:30-7:25-9:35 Fri/Sat 11:40
Big 2:30-4:50-7:30-9:35 Fri/Sat 11:40	TURFLAND MALL 276-4444
Kansas PG-13 2:15-4:40-7:45-9:55 Fri/Sat 12:00	Bambi 1:45-3:45 (Sat & Sun) 7:15-9:25
BARGAIN MATINEES DAILY	Ball Durham 2:00-4:30 (Fri-Sat) 7:15-9:25
	Married to the Mob 2:15-4:40-7:25-9:25

Homecoming '88



James Moore/Kernal Staff



TRACEY COLEMAN/Kernal Staff

(top) Nancy Nesbi and Jackie Heileriger, both Kappa Alpha Theta's, cheered and tossed confetti last night during the Wildcat Roar. (bottom) The UK Cheerleading Squad rode on a firetruck in

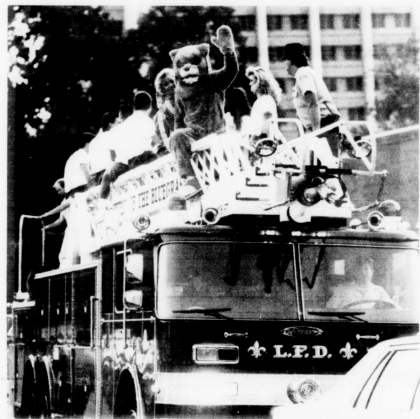
the parade from the Student Center to the Stadium. The five finalists for this year's Homecoming Queen are Susan Bridges, Kim Falls, Melanie Glasscock, Brandi Wickline and Lynn Zaremba.

(left) Homecoming Queen finalist Susan Bridges, a mathematics senior, shows her style during Tuesday's Homecoming fashion show. Her escort is Bill Boehman.



DAVID STERLING/Kernal Staff

(left) Jason Deatherage, a law senior, spray-paints decorations that will cover the Sigma Alpha Epsilon fraternity house on Rose Lane. House decorations were judged this morning.



TRACEY COLEMAN/Kernal Staff

THE KENTUCKY KERNEL

Filling You In Every Day

TRETORN TRETORN TRETORN PRESENTS

AMY GRANT
Featuring
MICHAEL W. SMITH
GARY CHAPMAN

lead me on tour

Friday, October 14
8:00 PM
Rupp Arena
Lexington, KY

Reserved Seating
\$14.50/\$15.50

Tickets Available at the Following
Ticket Master Locations:

Disc Jockey Records in Festival Market,
Lakeview Plaza, & Regency Center
Lazarus at Fayette Mall
Dawahares at Gardenside & Lexington Mall
Rupp Arena Box Office

charge by phone: (606) 233-3535 or 1-800-525-5900

Produced by Greenwood Productions,
K&K Power, and Advent Productions

Have a good time at the game ...

We'll be there, too.
Covering it, mostly.
The Kentucky Kernel will be doing stories on the tailgaters, the game, the students, the fun, the craziness. Everything.
All on Sunday afternoon. While you're resting up.
And then on Monday, we'll be back in here again, starting on the second day of another week.
And now you're thinking that we're about to tell you about this Monday's staff meeting.
Well you're wrong.
It's next Monday.
Same time, same place. (3 p.m. in Room 035 Journalism Bldg. for those of you who haven't been paying attention).
So you've got the week off.
See you Monday. If not sooner.

HOME COMING SPECIAL

Buy One Get One FREE!
Only at

Woodland Ave. Delivery
253-2111
(LIMITED DELIVERY AREA)

BUY ONE GET ONE FREE!

Purchase any **LARGE** pan pizza at regular price and receive a **MEDIUM** pizza, with the same number of toppings, absolutely **FREE!** Choose from your favorites: Pizza Hut Pan Pizza, Thin 'N Crispy or our new Hand-Tossed Traditional!

Please mention coupon when placing order. One coupon per person per order. This coupon is only redeemable at Pizza Hut® Delivery on Woodland Avenue. Limited Delivery Area. This offer is not valid in combination with any other Pizza Hut® offer. 1/20 cent cash redemption value.
©1988 Pizza Hut, Inc. OFFER EXPIRES: 9/26/88

Wright denies that he revealed information

By JIM DRINKARD
Associated Press

WASHINGTON — House Speaker Jim Wright denied yesterday that he revealed anything classified when he criticized a covert CIA operation in Nicaragua, while Republicans pressed for formal ethics and intelligence investigations of the speaker's remarks.

Wright, who has become a lightning rod for Democrats on Central America policy, found himself again embroiled in controversy for his revelation two days earlier that the Central Intelligence Agency had instigated demonstrations aimed at provoking the leftist Managua government and sabotaging peace talks with the contra rebels.

The speaker repeated that assertion to reporters, but contended such CIA activity was already well known through news reports. "I didn't say anything that was revealed to me as classified information," said Wright, D-Texas.

While he denied breaking rules against disclosing secrets, Wright did not specify how he had learned of the covert operation in Nicaragua. He and other Democrats sought to focus attention on the administration's action rather than the propriety of Wright's disclosure.

"In late August of last year I became aware that elements of the U.S. government were seeking to disturb the domestic tranquility in Central America, to foment disturbances with a view to seeing if they could provoke" the Sandinistas into a crackdown that would derail peace talks, Wright said.

"That seems to me just intolerably two-faced," he said. Wright added that he had been given "indirect assurance" that the practice has now been halted.

House Republican Leader Robert Michel of Illinois and Rep. Dick

Cheney, R-Wyo., chairman of the House Republican Conference, formally requested investigations in both the Intelligence Committee and the ethics committee, which has responsibility for enforcing non-disclosure rules.

The ethics panel, formally known as the Committee on Standards of Official Conduct, already is investigating Wright on unrelated allegations.

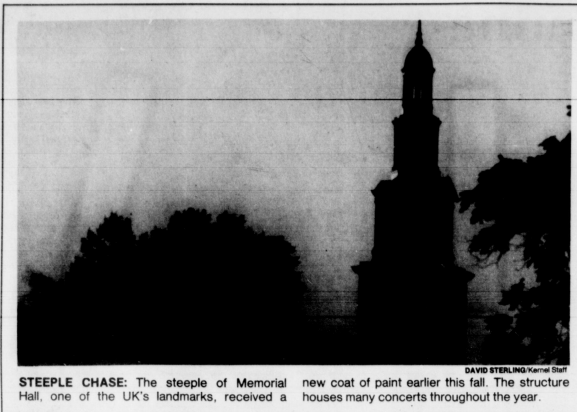
And a primary sponsor of legislation to tighten Congress' control over covert CIA activities, Sen. William Cohen, R-Maine, said the speaker's comments had apparently violated non-disclosure rules and jeopardized the bill.

"The clear implication . . . is that the speaker's statement could only have been derived from classified information in the possession of the House Intelligence Committee," Cohen said. "The speaker owes his colleagues in Congress and the American people an explanation."

Cohen, the vice chairman of the Senate Intelligence Committee, said the disclosure also could doom opposition members who are jailed for anti-government protests to longer prison terms or "a harsher fate," and would give the Sandinistas an enormous propaganda boost.

House Majority Leader Thomas Foley, D-Wash., said the legislation to require notice to Congress of covert actions within 48 hours, which had been due to come before the House next week, might be put off until the following week because of the press of other legislation.

The controversy over Wright's statements began Tuesday when he said he had received "clear testimony" from the CIA that the agency had fomented opposition demonstrations in Nicaragua. He told a reporter later that CIA officials had made the admission under congressional questioning.



STEEPLE CHASE: The steeple of Memorial Hall, one of the UK's landmarks, received a new coat of paint earlier this fall. The structure houses many concerts throughout the year.

State defends self-insurance plans

Associated Press

FRANKFORT, Ky. — The state is unprepared to handle all the paperwork and associated research that accompanies its plan to pay the health-care costs of approximately 120,000 public employees, Personnel Commissioner Tommy Greenwell said yesterday.

Greenwell also told members of the interim Appropriations and Revenue Committee that the state was essentially forced into self-insurance.

"It's unfortunate, perhaps, that we were given a short period of time to implement such a program but we did," Greenwell said.

Greenwell said the state had a

limited amount of money available for health insurance and found that companies were simply unwilling to provide the desired coverage for that amount.

The state will contract with I.C.H. Corp. of Louisville to process claims. The company will be paid \$6.19 per month for each participating employee.

The total cost of insurance paid by the state will be \$89.07 per month for each state employee, local school workers and others.

Greenwell said it will be several years, if ever, before the state will acquire the expertise to handle all parts of a full self-insurance program.

Legislators took some shots at

the self-insurance program being drafted, especially a plan to require that most maintenance prescriptions be obtained through the mail.

"I think it's a bad idea," said Rep. Marshall Long, D-Shelbyville. Greenwell said the mail-order plan for prescriptions will not start before Jan. 1 and may be shelved if pharmacists in Kentucky can put together a plan that would be as cheap.

Rep. Pat Friebert, R-Lexington, also questioned the financial stability of I.C.H., but company vice president Fred Rice said he was confident the firm could discharge its duties.

Ex-police guilty in drug killing

Associated Press

LOS ANGELES — A former Mexican police officer was found guilty yesterday of the 1985 kidnap and torture murder of a U.S. drug agent and his pilot.

Jurors deliberating in the case of three men charged in connection with the 1985 murders of Drug Enforcement Administration agent Enrique Camarena and pilot Alfredo Zavala Avelar returned to court to deliver its first verdict against the one defendant. They then returned to their deliberations.

They found Raul Lopez Alvarez, 28, a one-time member of the state judicial police assigned to the homicide squad in Guadalajara, guilty of six charges, including two counts of committing violent acts in support of racketeering.

Prosecutors said this was the first conviction in the nation under a relatively new law.

Lopez was also found guilty of conspiracy to kidnap, kidnaping, felony murder and accessory after the fact.

During the trial, Lopez was seen on a videotape describing in detail to an undercover DEA agent the torture murder of Camarena and the subsequent escape of Mexican drug baron Rafael Caro Quintero, who allegedly masterminded the killing.

All three defendants appeared pale and shaken as the verdict was announced and jurors were polled on whether all of them agreed. They said they did.

U.S. District Judge Edward Rafeedie set Lopez's sentencing for Oct. 24.

WRITE FOR THE KERNEL — AND WRITE YOUR OWN TICKET

GO CATS!
Cream Kent State



NEW! Happy Hour
Monday-Thursday 5-7

30%-40% off on your favorite items!

345 S. Limestone
Next to Two Keys on S. Limestone
Mon-Sat. 11:30-11:30 Sun 12:30-11:30

WHITE MOUNTAIN CREAMERY

Michael's PIZZA PLUS HOMECOMING and FALL SPECIAL!!
Just Mention this Ad for any one of these offers!

- ANY 5-ITEM 16" PIZZA for \$6.95!!
- 16" PIZZA PLUS for just \$7.95!!
- ANY SUB, A SMALL SODA, CHIPS, AND PICKLE: \$2.50!!

YOU CAN ALSO GET AN ALL-YOU-CAN-EAT SALAD BAR FOR JUST 69¢ WITH ANY PIZZA ORDER FREE PITCHER OF SODA WITH A GAME SUB!!

GOOD FOOD AT GOOD PRICES! LIMITED DELIVERY AREA - OPEN: 11 a.m.-2 a.m. Mon. thru Sat. CALL NOW: 255-PLUS

FREE
BUY 1 MONTH DURING SEPTEMBER AND GET THE NEXT MONTH FREE!!!

STUDENT RATE \$25.00
for 30 day unlimited class card. Classes 7 days a week.

THE WORKOUT STUDIO
Buckhorn Plaza (Alumni Dr. & Buckhorn)
Call 268-BODY for schedule

Kernel Personals

The perfect after-homecoming surprise

with coupon

PURDON RENTAL CENTER
SEE US FOR ALL YOUR PARTY SUPPLIES

—RENTALS—
Tents • Tables • Chairs
Linen • China • Glassware
Silver • Barware • Stages
Fountains • Catering Equipment

"YOU NEED IT? WE HAVE IT!"

10% Discount on Sales
266-1197
2337 Woodhill Drive

Chilly Weather...
BUNDLE UP!

There's nothing like a warm, gooey cinnamon roll from T.J. Cinnamons to warm your heart. And now we've given you a way to warm your wallet also!

50¢ OFF
Any T.J. Cinnamons Purchase.
Valid at Festival Market, Turfland Mall and Richmond Mall.
Offer expires 9/30/88

Festival Market 255-8824 Turfland Mall 277-4559 Richmond Mall 623-2138

University students get a 10% discount with a valid student I.D.

REGISTER NOW FOR ... CAMPUS-WIDE LEADERSHIP CONFERENCE, OCTOBER 7 AND 8

Join fellow leaders of student organizations October 7 and 8 as they meet to exchange ideas and programs while enhancing their communication on and off campus.

PROGRAMS INCLUDE:

- Campus Issue Forum
- SGA/SAB/SOA panel
- Publicity strategies
- Methods of resolving group conflict
- Fostering cultural diversity

Also includes a reception for delegates and advisers at Spindletop Hall

Registration is open to all Presidents and officers of the University of Kentucky Student Organizations. Registration and \$10 delegate fee due by October 3.

For applications come by Student Organization Center, Room 106 Student Center or check your organizational mailbox.

CHI OMEGA



XΩ

KAPPA SIGMA



ΚΣ

ALPHA XI DELTA



ΑΞΔ

KAPPA KAPPA GAMMA



ΚΚΓ

ALPHA GAMMA DELTA



ΑΓΔ

DELTA DELTA DELTA



ΔΔΔ

ALPHA GAMMA RHO



ΑΓΡ

PI BETA PHI



ΠΒΦ

ALPHA DELTA PI



ΑΔΠ

DELTA ZETA



ΔΖ

DELTA GAMMA



ΔΓ

Go Cats!



FROM THE UK GREEKS

KAPPA DELTA



ΚΔ

KAPPA ALPHA



ΚΑ

PHI SIGMA KAPPA



ΦΣΚ

ALPHA TAU OMEGA



ΑΤΩ

SIGMA PHI EPSILON



ΣΦΕ

DELTA TAU DELTA



ΔΤΔ

KAPPA ALPHA THETA



ΚΑΘ

PI KAPPA ALPHA



ΠΚΑ

PHI KAPPA TAU



ΦΚΤ

THETA CHI



ΘΧ