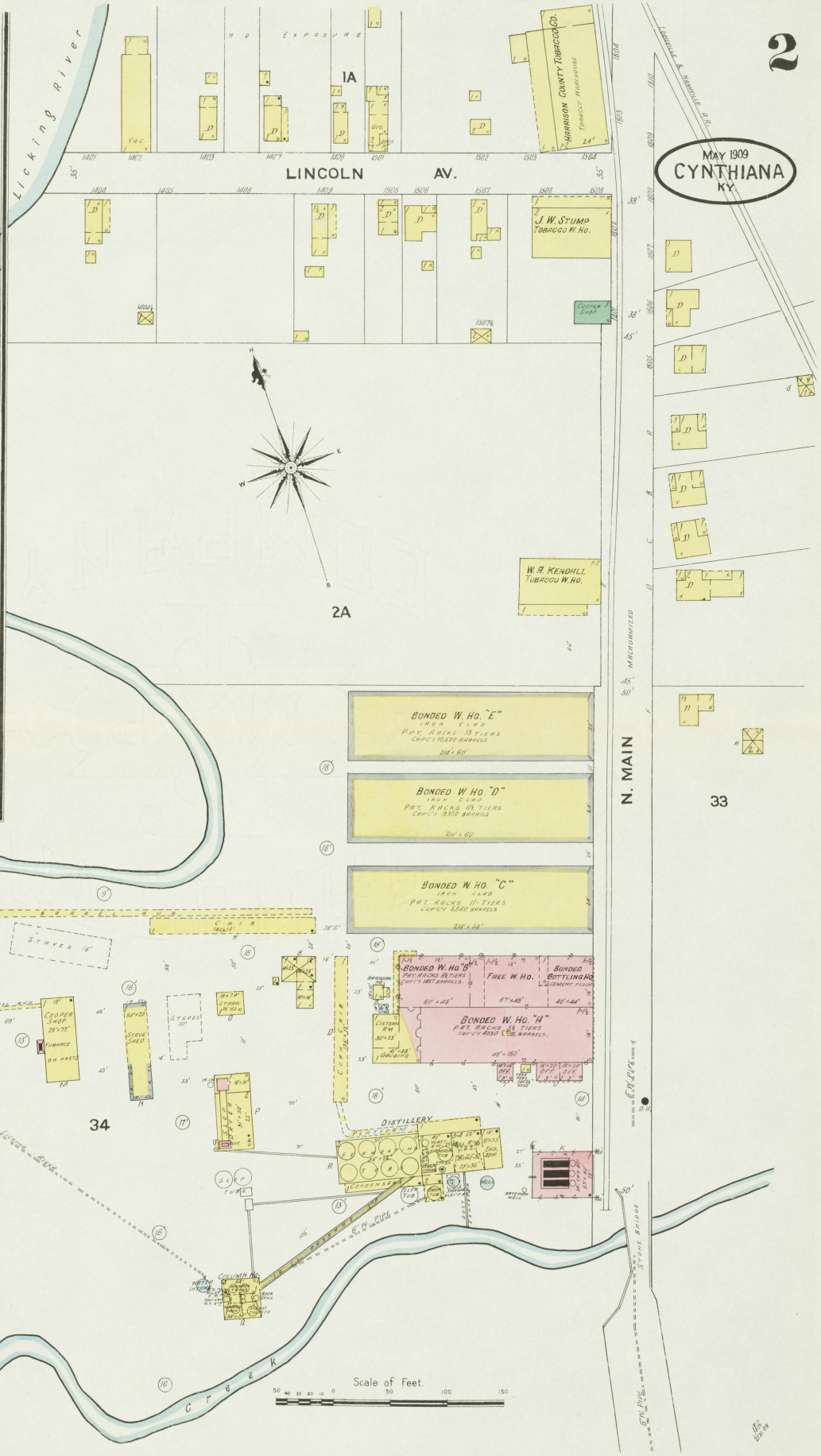


MAY 1909
CYNTHIANA
KY

FACTORY AT TIME
OF SURVEY
IN 1908 IT WAS USED FOR
COUNTY TOBACCO W. HO.

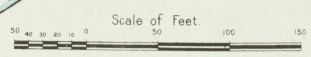
REDMON DISTILLING CO.
Registered Distillery No. 15
6th District, Harrison Co., Ky.
DISTILLERY DISCONTINUED.

Located 1 Mile S.W. of Court Ho.



F. S. ASHBROOK DISTILLERY Co.
FORMERLY THE F. S. ASHBROOK CO., INC.
FORMERLY F. S. ASHBROOK & CO.
FORMERLY L. VAN HOOK & CO.
Registered Distillery No. 35
6th District, Harrison Co., Ky.

PRODUCT: SWEET WASH POWER MADE BOURBON WHISKEY.
CAPACITY: 500 BARRELS. MASH & FERMENTED. DISTILLED & MOUNTED IN THE
YEAR. N. O. 1. AND SINGLY. WITCHAMIN. LEMON. 50 PARTS. 50 PARTS. 50 PARTS.
BONDED. BOTTLES & BOTTLES. OF WATER. UNBOTTLED. ONE HELL.
AND 50 PARTS. CITY WATER. CONNECTION. 50 PARTS. 50 PARTS. 50 PARTS.
HAS ONE BUILT. 50 PARTS. 50 PARTS. 50 PARTS. 50 PARTS. 50 PARTS. 50 PARTS.
TOWNSHIP. LIGHTS. 50 PARTS. 50 PARTS. 50 PARTS. 50 PARTS. 50 PARTS. 50 PARTS.
BOTTLED. KEPT. 50 PARTS. 50 PARTS. 50 PARTS. 50 PARTS. 50 PARTS. 50 PARTS.



MAY 1909
CYNTHIANA
KY.

3

34

W. PEARL

N. LOCUST

40

HARRISON HOSPITAL CO. INC.
LIGHTS, ELEC. HEAT, GAZES & STORES

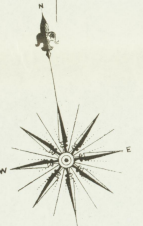
N. POPLAR

N. MAIN

4

W. PENN
5

W. PLEASANT



1A

FIFTH

2A

FOURTH

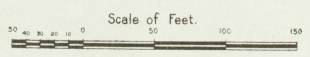
9

4A

BROAD

3A

5A



3

Located 4 1/2 Miles N.W. of Cynthiana Ky.
and
2 1/2 Miles S.W. of PoinDEXter Ky.

MAY 1909
CYNTHIANA
KY.

4

N. MAIN

E. PENN

6

N. WALNUT

E. PEARL

13

C E M E T E R Y

GRADED CITY SCHOOL
LIGHT SYSTEM - LIGHTS ELECTRIC

BRIDGE

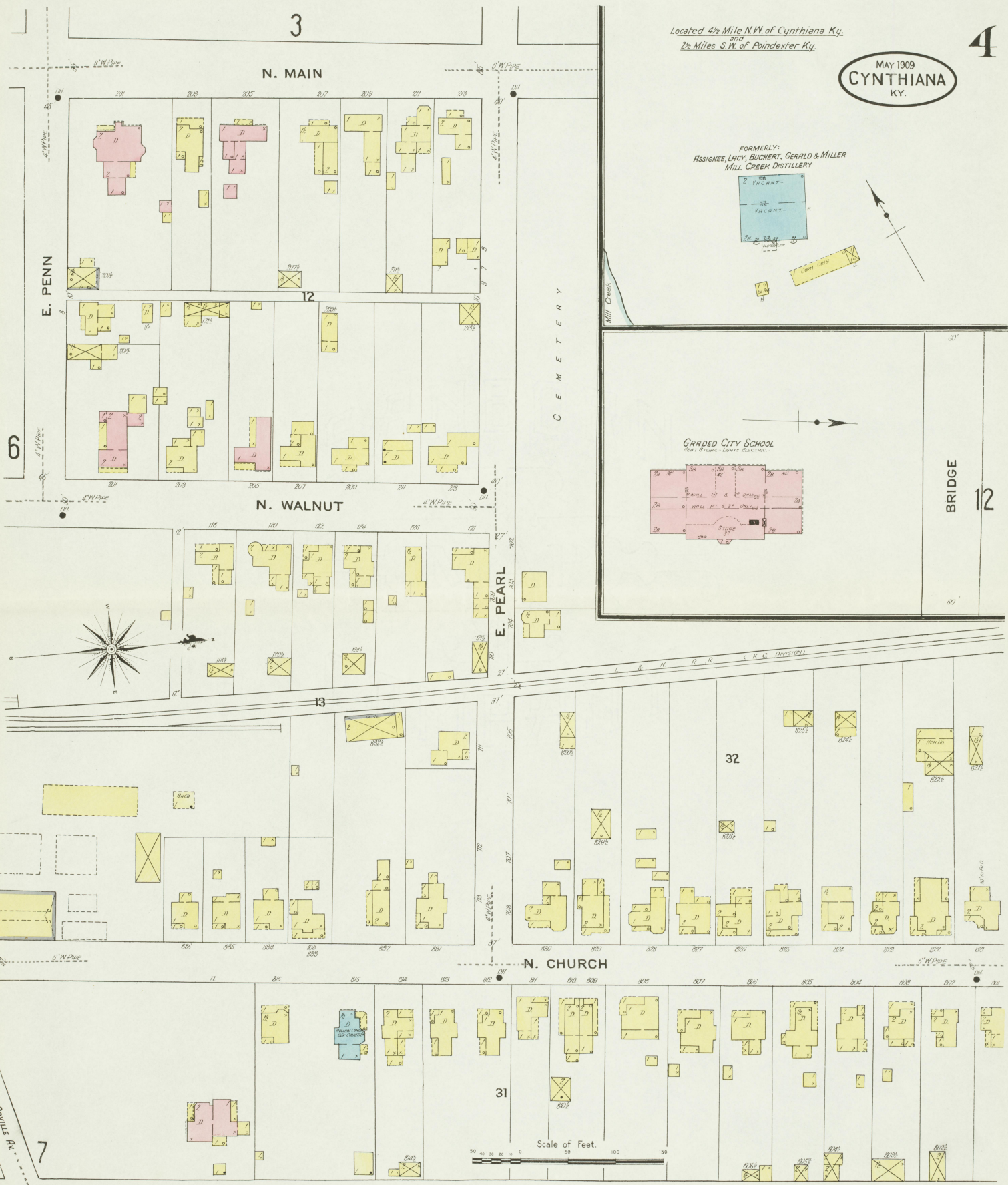
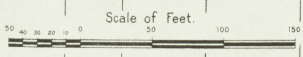
12

N. CHURCH

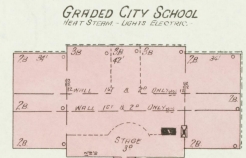
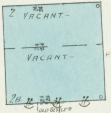
31

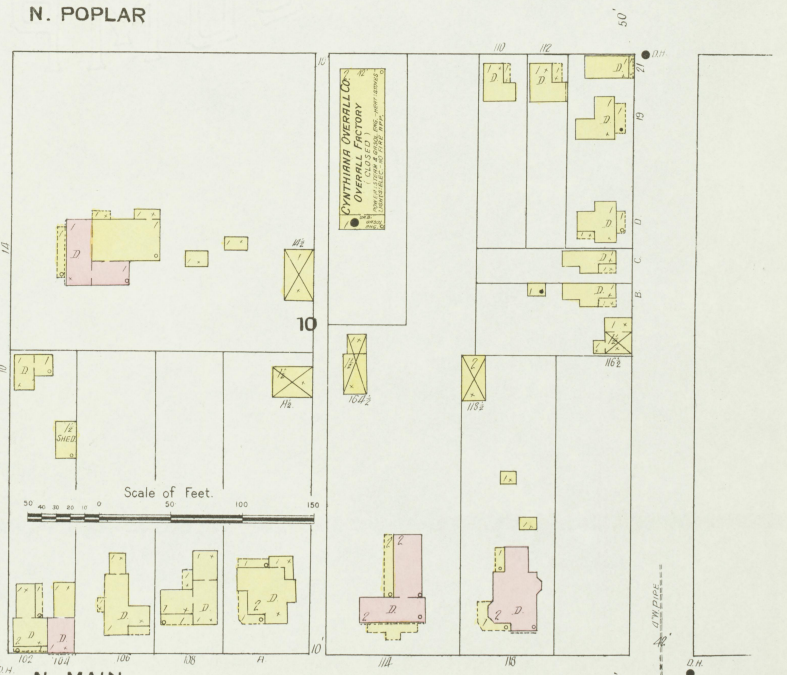
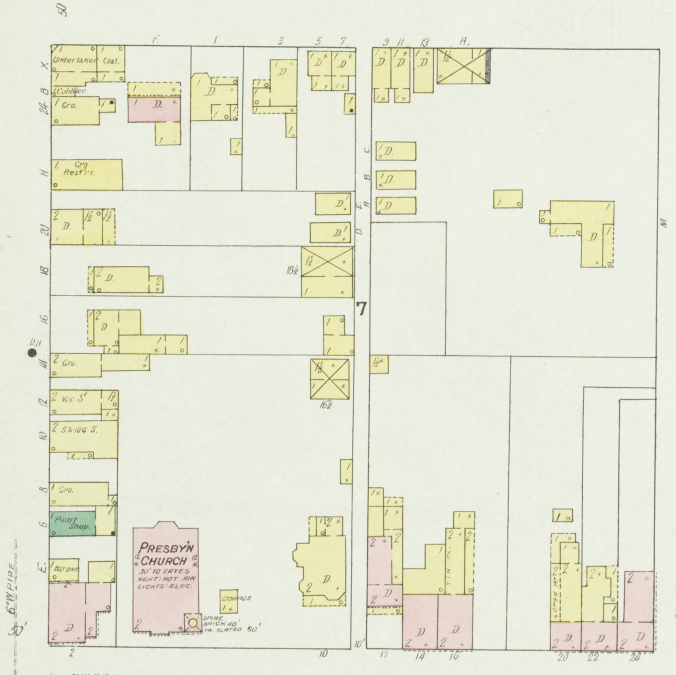
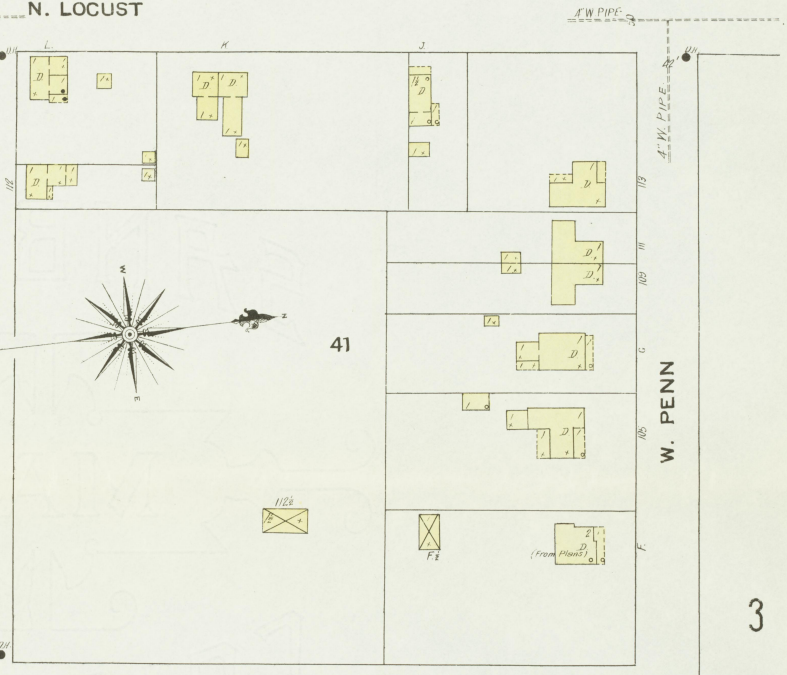
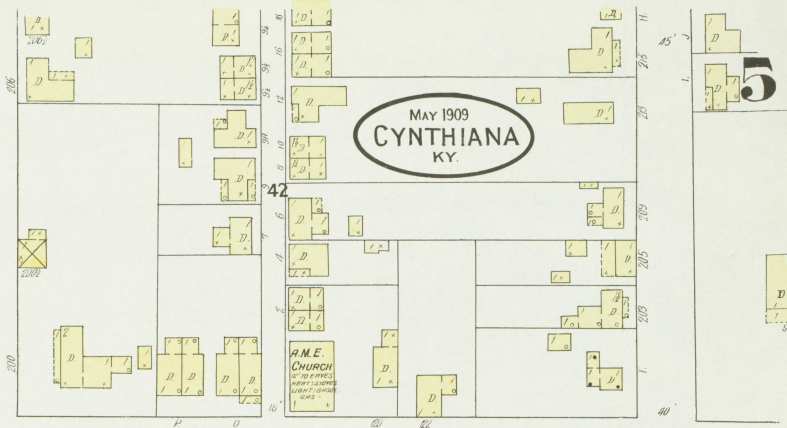
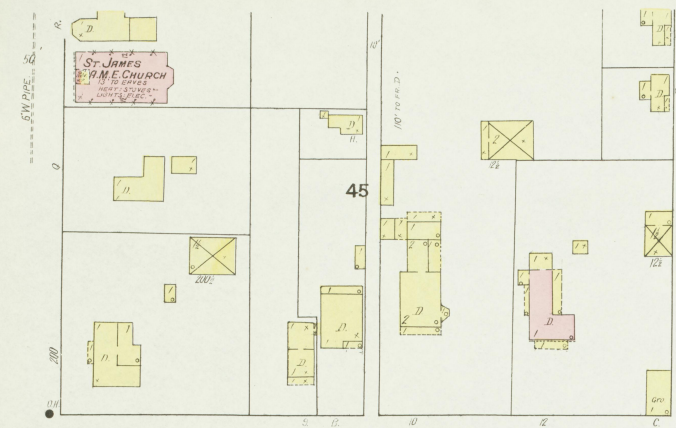
32

7



FORMERLY:
ASSIGNEE, LACY, BUCHERT, GERRALD & MILLER
MILL CREEK DISTILLERY





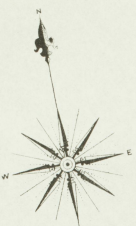
5

3

6

MAY 1909
CYNTHIANA
KY.

6



4

4

E. PENN

13

AV.

N. MAIN

N. WALNUT

N. CHURCH

E. MILL

EPISC'L CHURCH

5

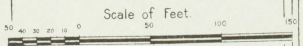
7

St. EDWARDS R.C. CHURCH

14

E. PLEASANT

11



6

7

N. CHURCH

MAY 1909
CYNTHIANA
KY.

4
ODDVILLE
AV.

12
E. PLEASANT

27

AV.
WILSON

30

PRIVATE

N. MILLER

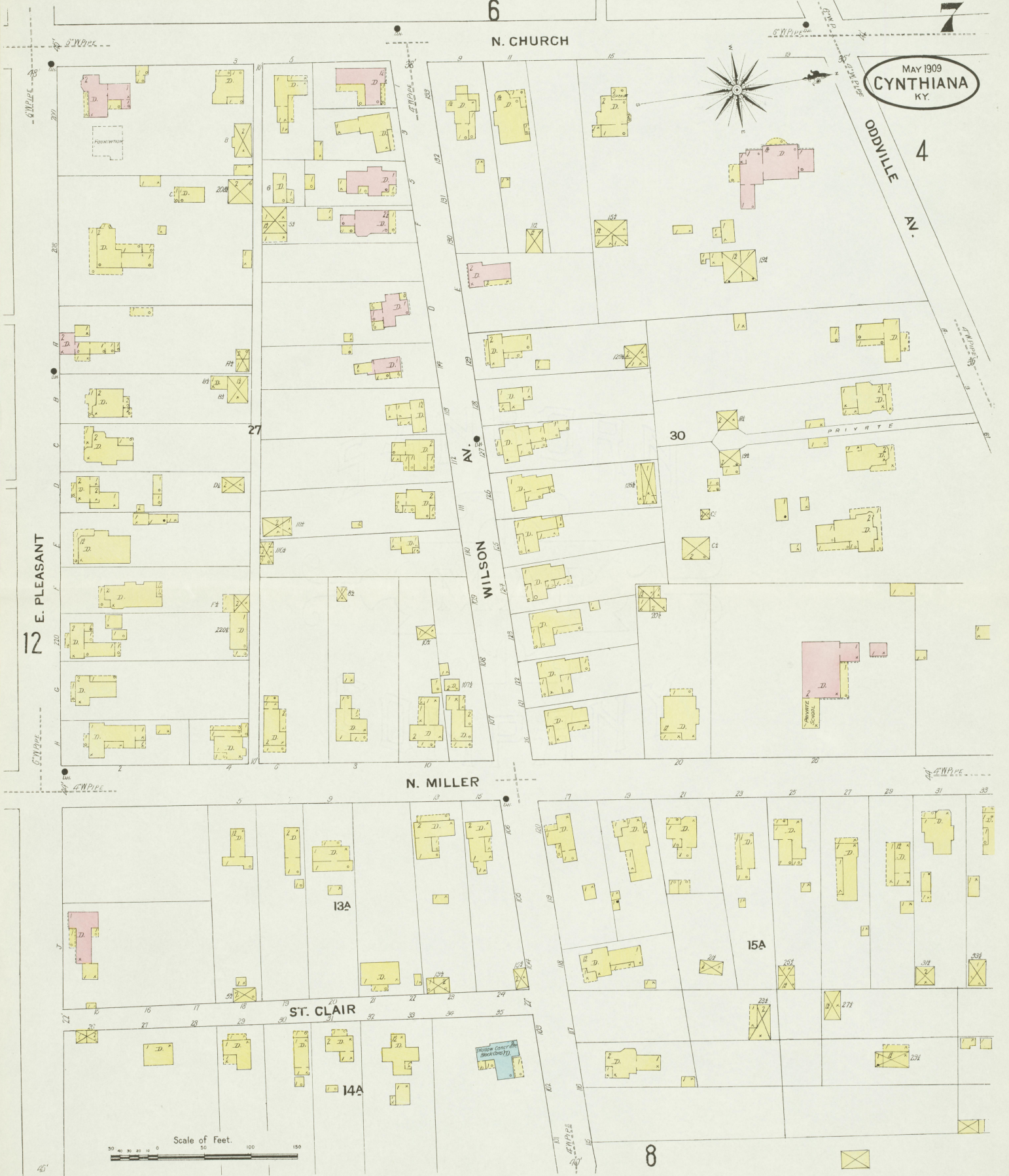
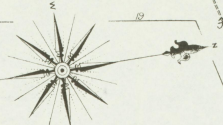
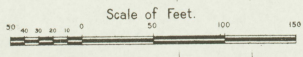
13A

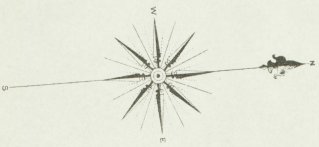
15A

ST. CLAIR

14A

8





MAY 1909
CYNTHIANA
KY.

7

8

ODDVILLE AV.

WILSON AV.

VINE

MARSHALL AV.

ELMARCH AV.

MS DOWELL

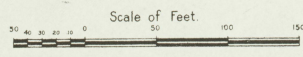
14A

16A

17A

18A

15A



MAY 1909
CYNTHIANA
KY.

9



Scale of Feet.
0 50 100 150

3

NOT FINISHED

MAY 1909
CYNTHIANA
KY.

47

(Formerly)
THE BOYERS DISTILLING Co.
(Dist. DISCONTINUED)
Registered Distillery No. 6, 6th Dist.
Harrison Co. Ky.

PT. CONNERSVILLE
Located 7 Miles S.W. of Cynthiana, Ky.

CONNERSVILLE PIKE

RIVER

S. LOCUST

W. PLEASANT

3

JAIL YARD

JAIL

FEED, HAY & SILE

Storage

S. POPLAR

W. PIKE

COURT

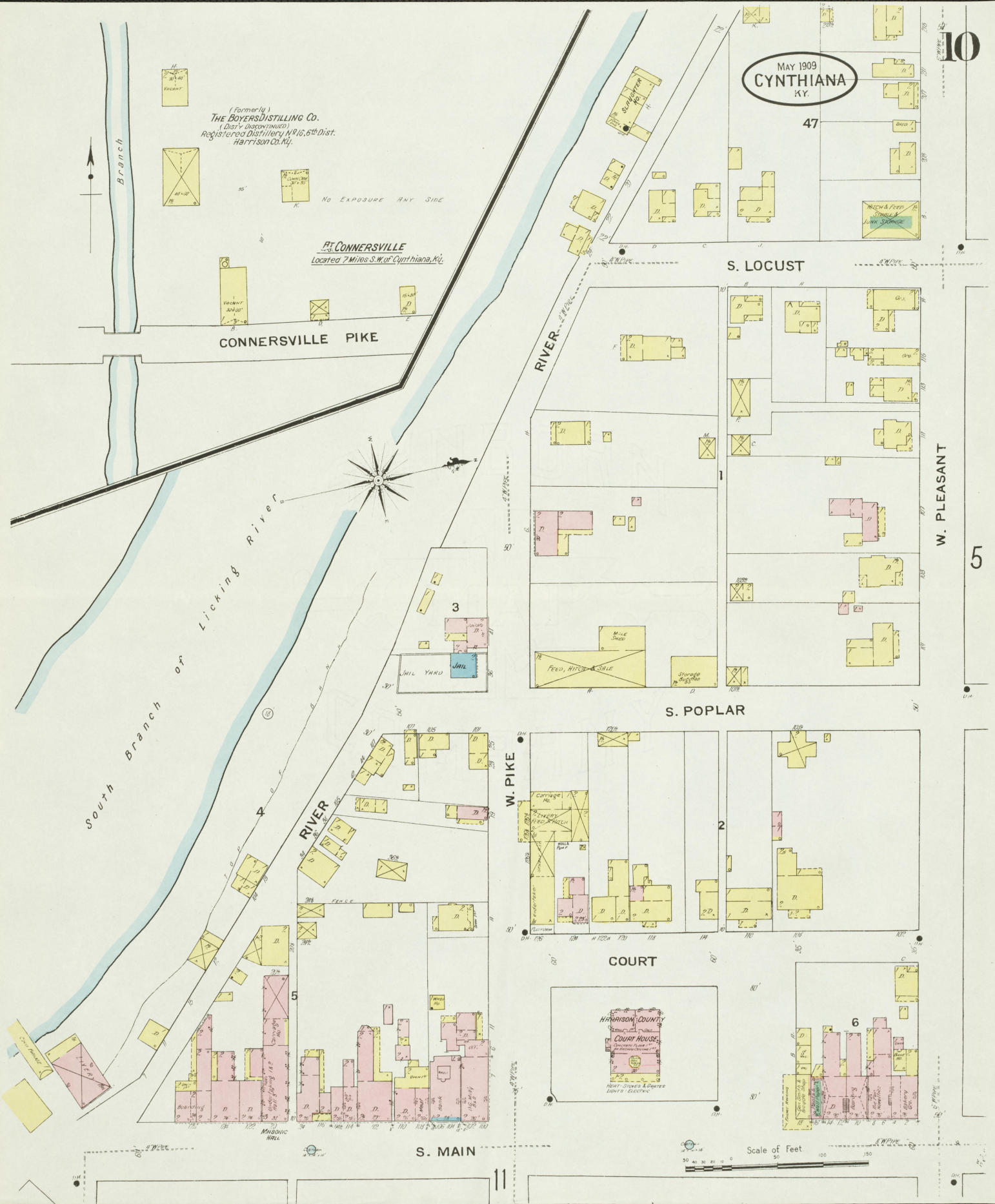
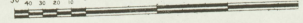
HARRISON COUNTY
COUNTY HOUSE

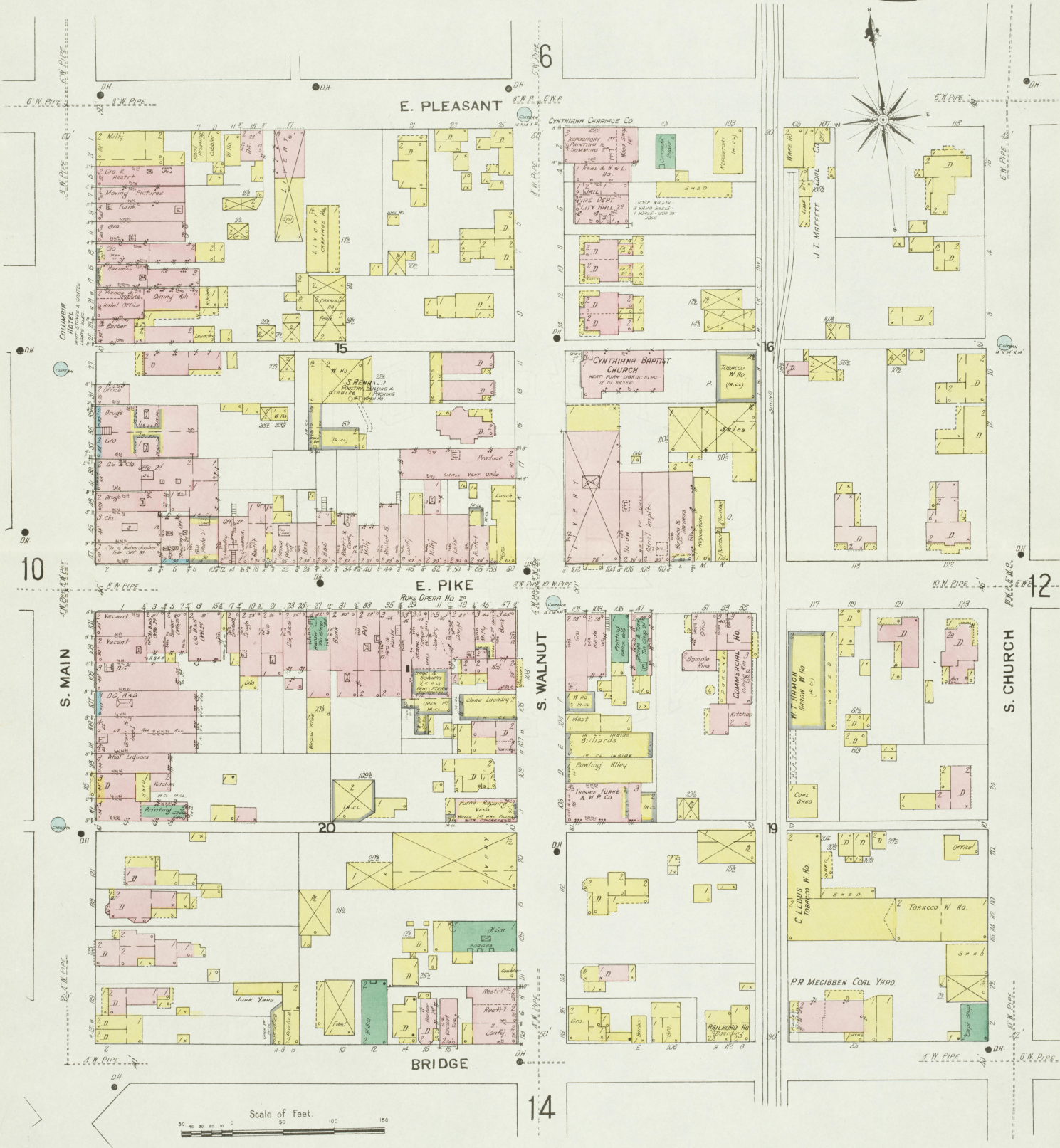
HEAT - STONES & COINERS
LIGHTS - ELECTRIC

6

S. MAIN

Scale of Feet





E. PLEASANT

E. PIKE

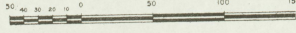
S. MAIN

S. WALNUT

S. CHURCH

BRIDGE

Scale of Feet



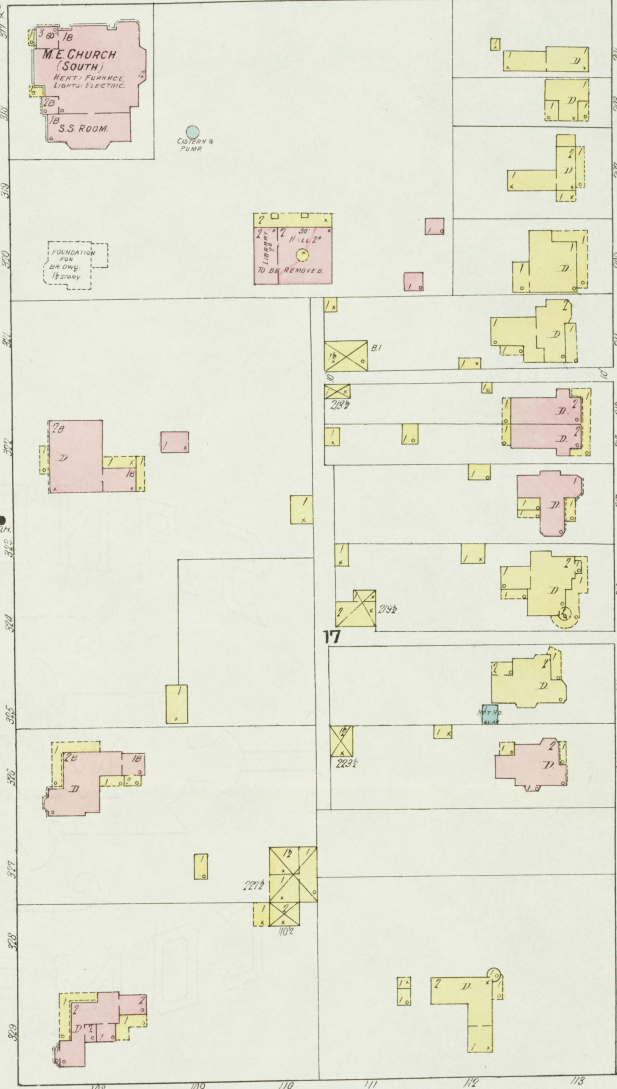
MAY 1909
CYNTHIANA
KY.

11

12

S. CHURCH

14



ELK OR CLIFTON

4 BRIDGE

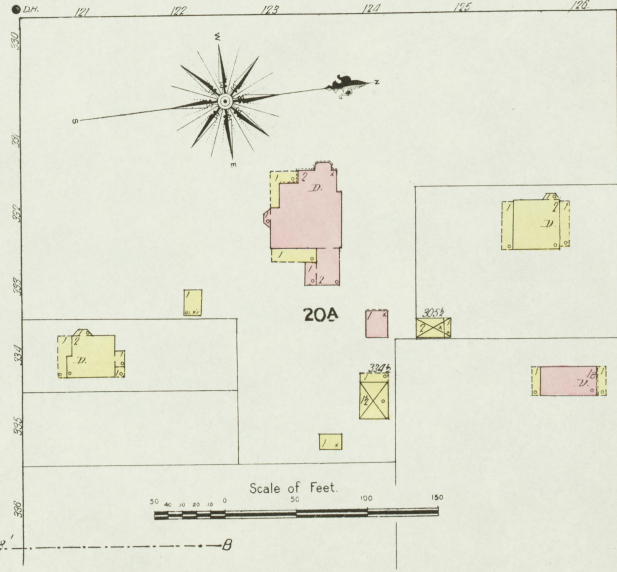
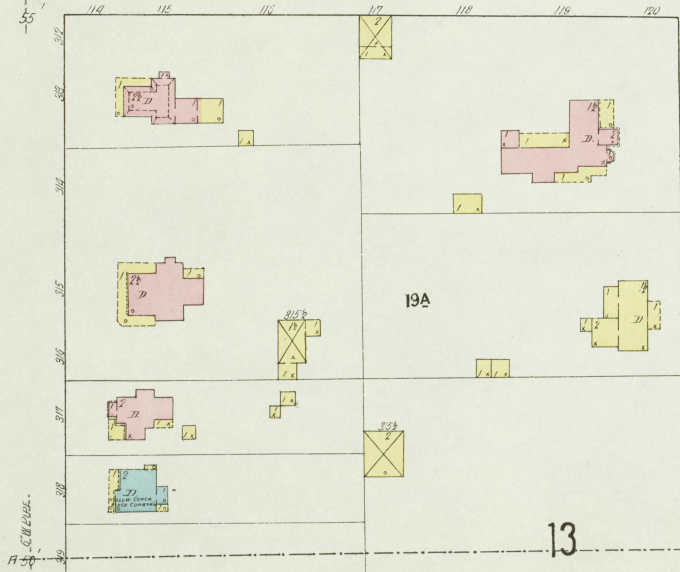
E. PIKE

E. PLEASANT

7

S. MILLER

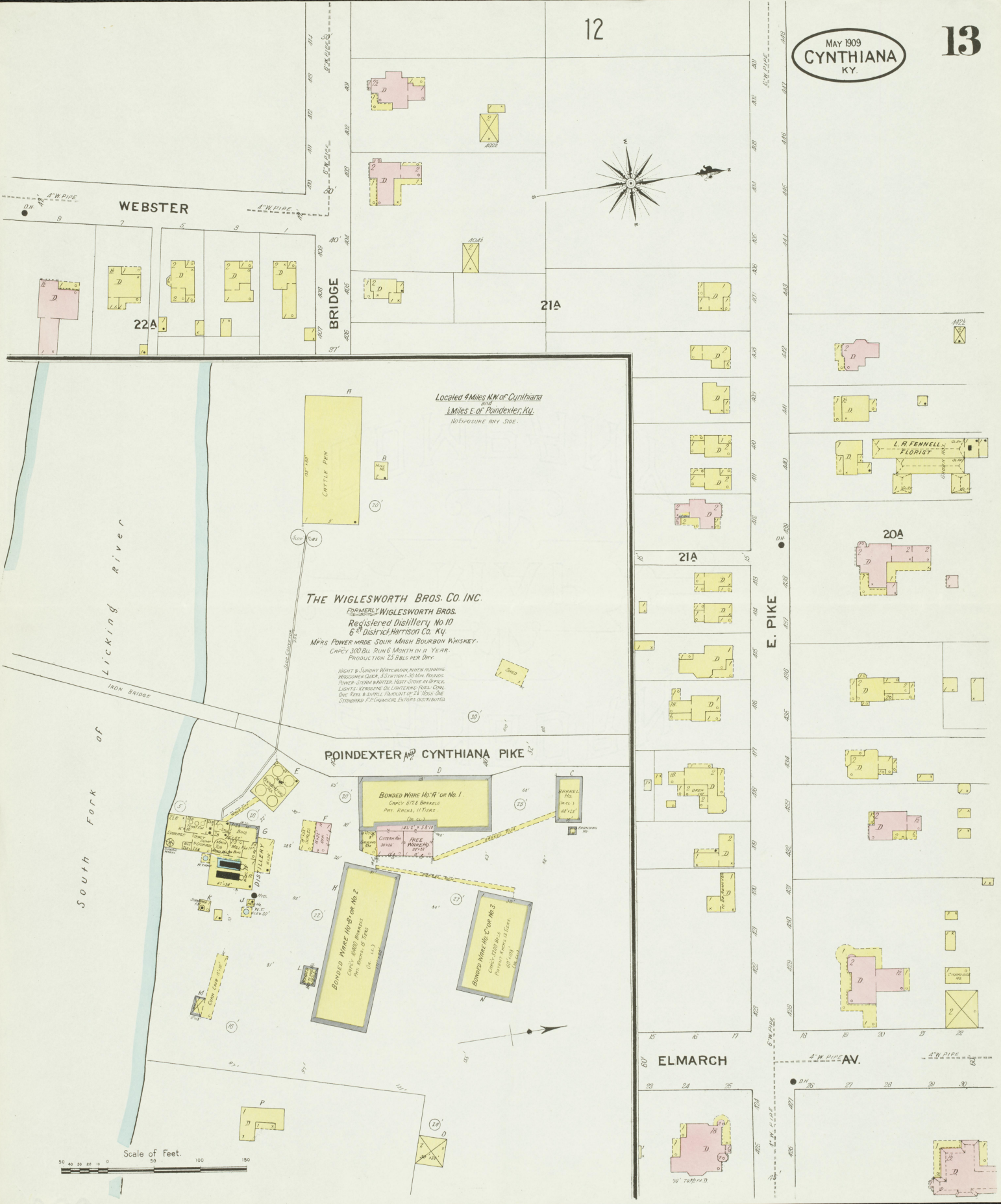
13



ST. CLAIR ST.

05

8-11-09



12

WEBSTER

22A

21A

Located 4 Miles N.N. of Cynthiana
and
1 Miles E. of Pointexter, Ky.
NO EXPOSURE ANY SIDE.

THE WIGLEWORTH BROS. CO. INC.
FORMERLY WIGLEWORTH BROS.
Registered Distillery No 10
6th District Harrison Co. Ky.
MFRS POWER MADE SOUR MASH BOURBON WHISKEY.
CAPCY 300 BU. RUN 6 MONTH IN A YEAR.
PRODUCTION 15 BBL'S PER DAY.
WIGHT & SANDY WHITEHEAD, PROPRIETORS
MASONIC CUP & SCOTCH WHISKY, BOURBON
POWER STAMP WATER, NEET SIDE IN B.P.F.C.
LIGHTS, RESERVING OF LANDING, TUGS, LOW
DUTY REEL & SHARP POINT OF 21 TONS, ONE
STANDARD 70' DIAMETER EXTERIOR DISTRIBUTED

POINDEXTER AND CYNTHIANA PIKE

BONDED WARE No. 1
CAPCY 475 BARRLS
PRT. BARRLS, 11 TONS
(IN L.S.)

BONDED WARE No. 2
CAPCY 475 BARRLS
PRT. BARRLS, 11 TONS
(IN L.S.)

BONDED WARE No. 3
CAPCY 475 BARRLS
PRT. BARRLS, 11 TONS
(IN L.S.)

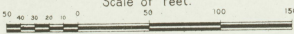
L. A. FENNEL
FLORIST

20A

E. PIKE

ELMARCH

Scale of Feet.



15

15

MAY 1909
CYNTHIANA
KY.

KENTUCKY DISTILLERIES & WARE HO. CO.

OLD LEWIS HUNTER DISTILLERY

FORMERLY
G. R. SHARPE & CO.
Registered Distillery No. 10
6th District, Harrison Co. Ky.

PRODUCT RYE SOUR MASH WHISKEY.
MASH CAPACITY 8500 LBS. PER DAY. YIELD: 45 GALLONS PER DAY.
DISTILLERY OPERATED ABOUT 5 MONTHS PER YEAR.

NIGHT WITCHMAN NO. 1000. POWER STEAM HEAT - STORED
IN OFFICES & YEAST KEGS. STEAM IN BONDERS WARE HOUSES.
LIGHTS LIT BY ELECTRICITY IN WARE HOUSES. RESIDUAL
LANTERNS IN DISTILLERY. GRINNELL PILES, SPRAWLERS
IN DISTILLERY & BONDERS. FIVE BY SANDY TONKIN. HIS
SCHOOL AND HIS RILEY PLUMS. DISTILLERY SIGNED 4-1-
1907. BONDERS IN DISTILLERY FIVE PILES & BONDERS
IN BONDERS.

South Branch of Licking River

South Branch of Licking River

BONDED WARE HO. F
CAPACITY 18000 BALS.
Part. Bonded, 21 Tiers most
(16 in. dia.)
21 to 100 feet
107' x 100'

NEAR LAIR STATION
Located 7 Miles S. W. of Court Ho.

Located 1/2 Miles W. of Lair Station
and
1/2 Miles W. of Cynthiana.

LAIR & CONNERSVILLE PIKE

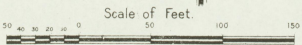
FORMERLY THE T. J. MEGIBBEN CO'S
EDGEWATER DISTILLERY
Registered Distillery No. 1
6th District, Harrison Co. Ky.

PARIS PIKE

BONDED WARE HO. E
CAPACITY 18000 BALS.
Part. Bonded, 21 Tiers most
(16 in. dia.)
21 to 100 feet
107' x 100'

BONDED BOTTLING HO.
CAPACITY 18000 BALS.
Part. Bonded, 21 Tiers most
(16 in. dia.)
21 to 100 feet
107' x 100'

FACTORY
FACTORY
FACTORY
FACTORY
FACTORY



15

15