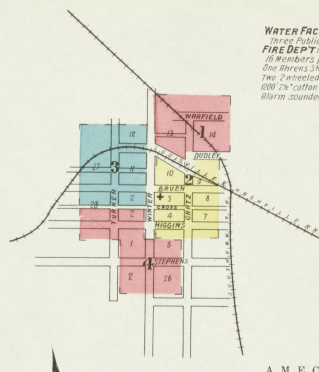
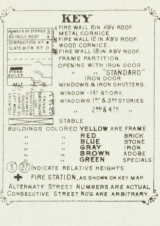
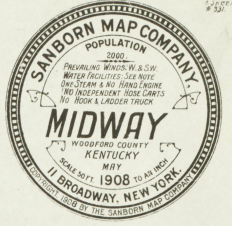


**KENTUCKY FEMALE ORPHAN SCHOOL**

NO WATCHMAN, NO FIRE ALARMS.  
WATER PUMPED TO TANK FROM CREEK, BY GRIND. ENG.  
NO EXPOSURE.



**WATER FACILITIES:**  
Three Public Cisterns & Lees Branch  
**FIRE DEPT:** 10 Volunteers  
16 Members paid for actual service.  
One Steamer Steam Fire Engine  
Two 2-wheeled hand hose reels  
1000' 2 1/2" Cotton hose  
Alarm sounded from Eng. by bell

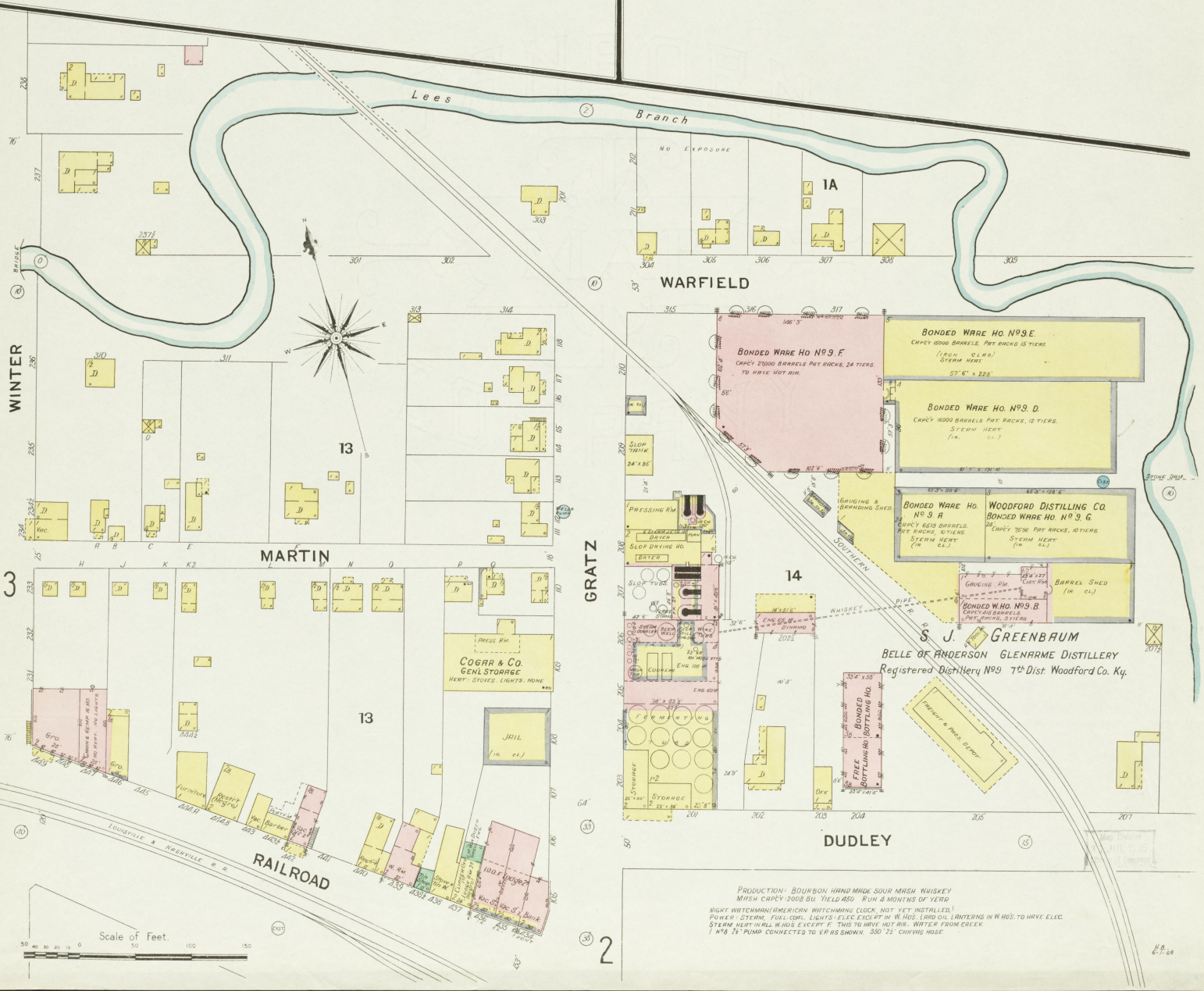


LIBRARY OF DISTRICT  
JUN 25 1908  
MIDWAY, KY.

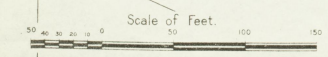
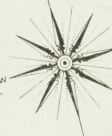
Map Revised  
JUL 17 1908  
Library of District

**INDEX**

SPECIALS.	NUMBER	NAME	NUMBER
A	1	Greenbaum, S. J., Distillery	1
B	2	Kentucky Female Orphan School	1
C	3	Baptist Church	1
D	4	Belle of Anderson Distillery	2
E	1	Masonic Temple	2
F	2	Christian Church	3
G	3	Cogar & Co., Coal Shed	3
H	3	Elevator, General Storage	3
I	3	Collins Opera House	3
J	3	Combs, R. R., Wagon Shop	3
K	3	Roberts & Sutton, Coal Yard	3
L	3	Donovan Hotel	3
M	3	Skating Rink	3
N	3	Southernland, H. F., Tobacco Warehouse	3
O	3	Stark, R. S., Tobacco Warehouse	4
P	3	Glenarme Distillery	4
Q	3	Steel, W. J., Tobacco Warehouse	4

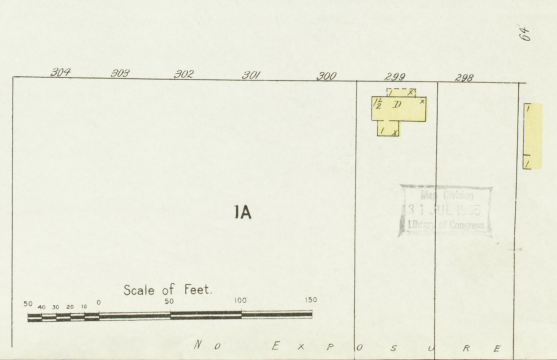
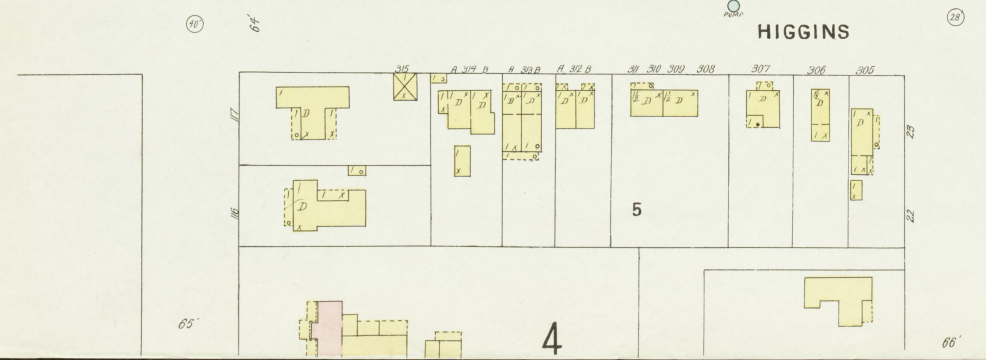
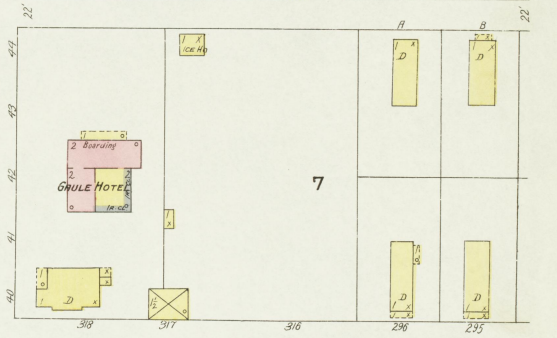
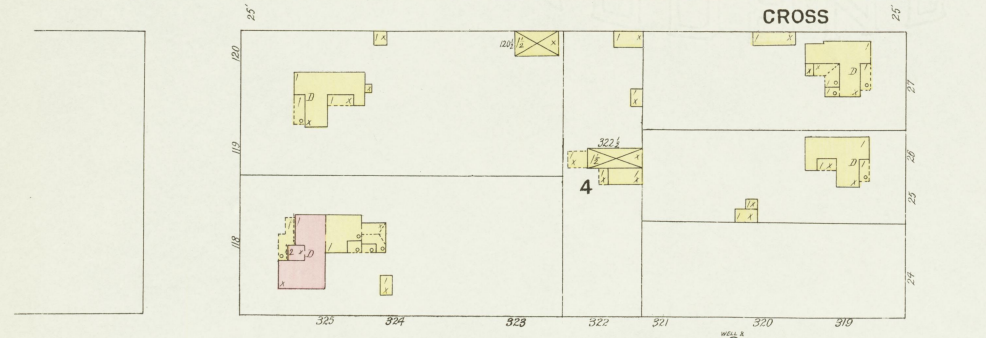
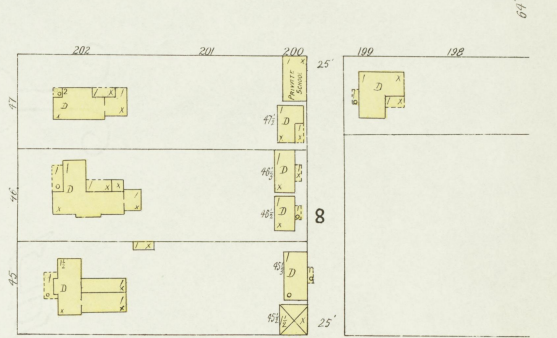
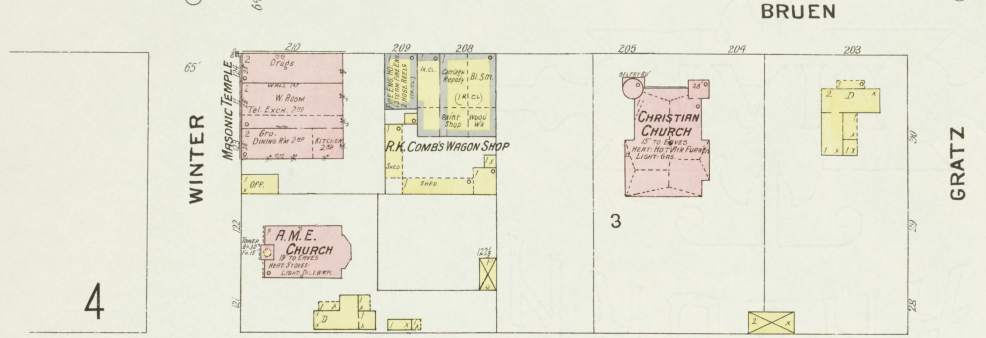
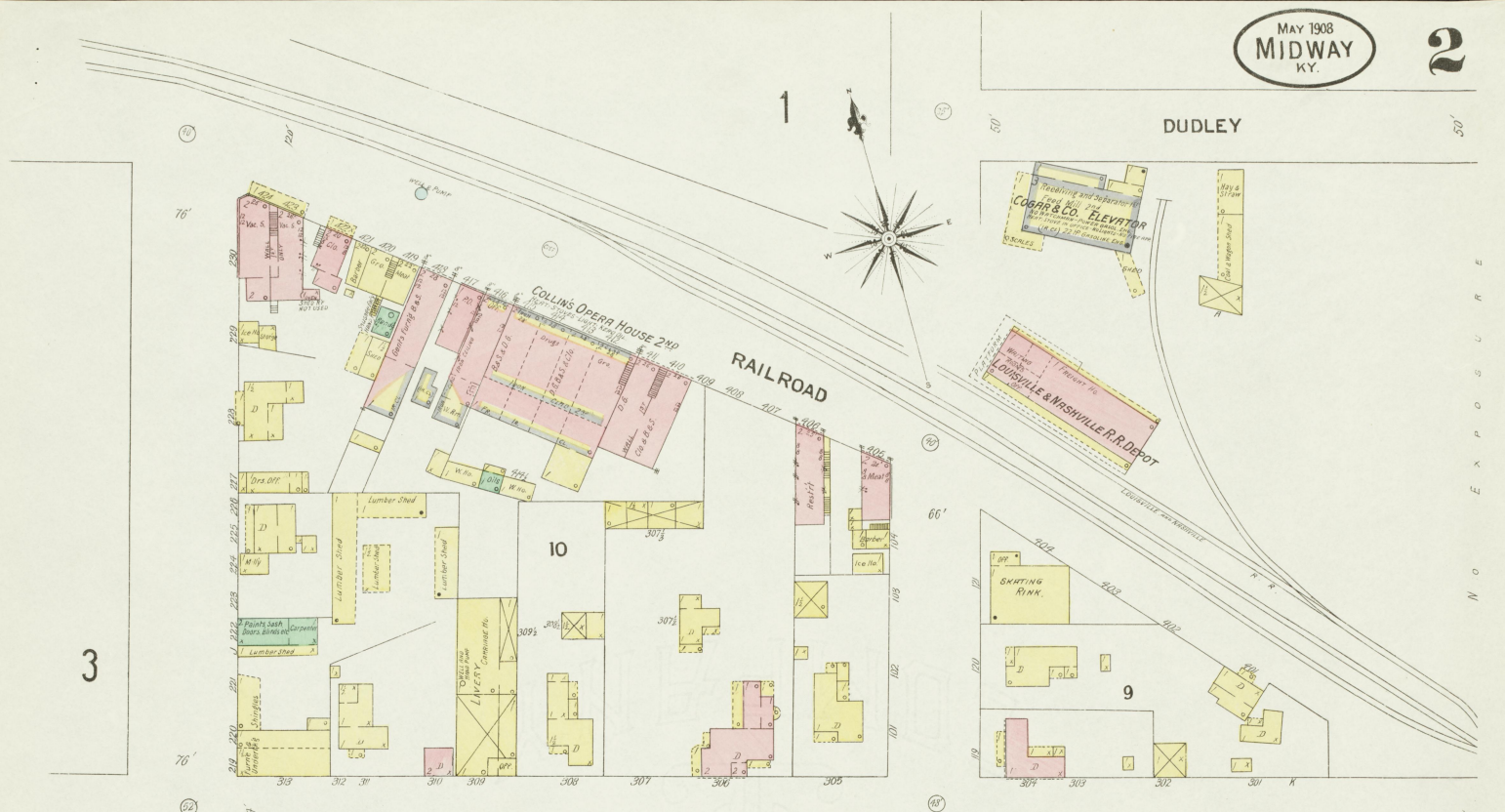


WINTER



PRODUCTION: BOURBON HAMBURG SOUR MASH WHISKEY  
MASH CAPCY 2000 BU. YIELD 450. RUN 4 MONTHS OF YEAR.  
NIGHT WATCHMAN (AMERICAN WATCHMAN'S CLOCK, NOT YET INSTALLED).  
POWER: STEAM. FULL CORN. LIGHTS: ELEC. CIG. OFF IN W. HOS. (HARD LANTERNS IN W. HOS. TO HAVE ELEC.  
STEAM HEAT IN BLDG. EXCEPT F. THIS TO HAVE HOT AIR. WATER FROM CREEK.  
1" N° 9 7 1/2" PUMP CONNECTED TO VP. IS SHOWN. 350 7 1/2" CHIMNEY HOSE.

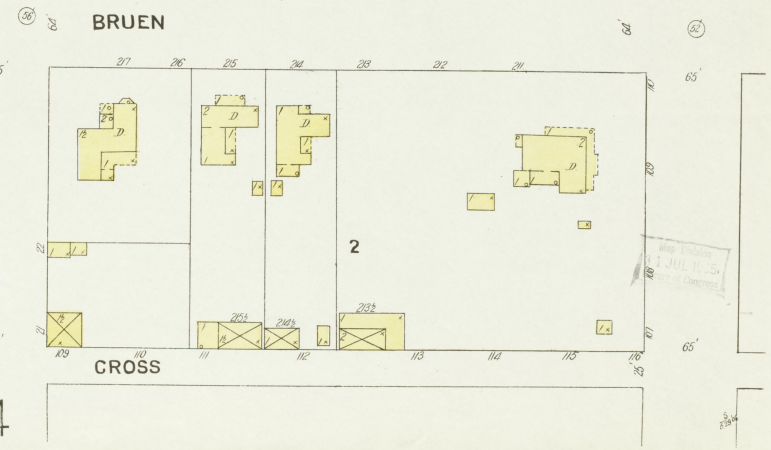
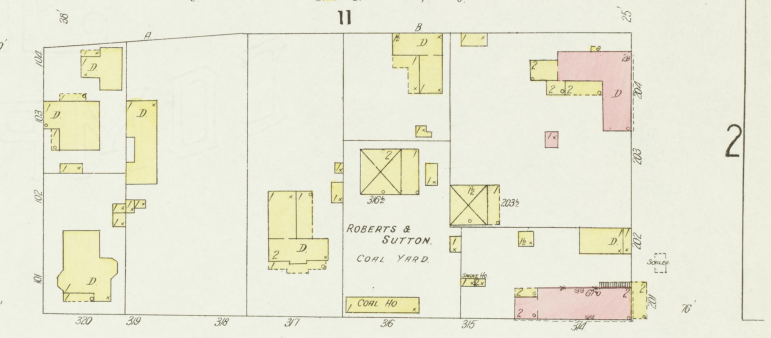
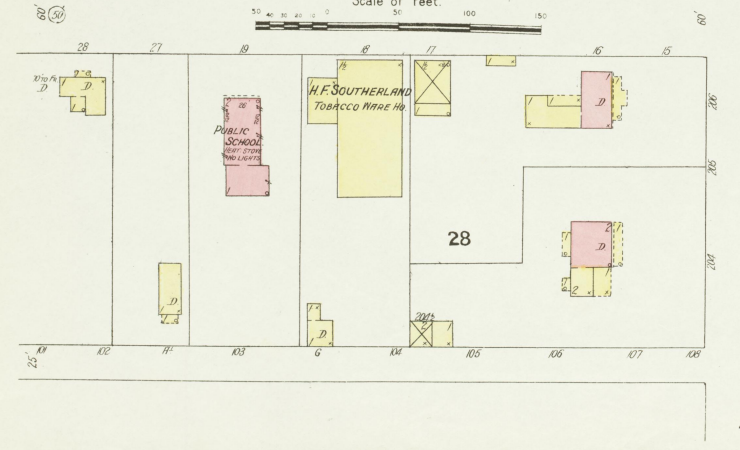
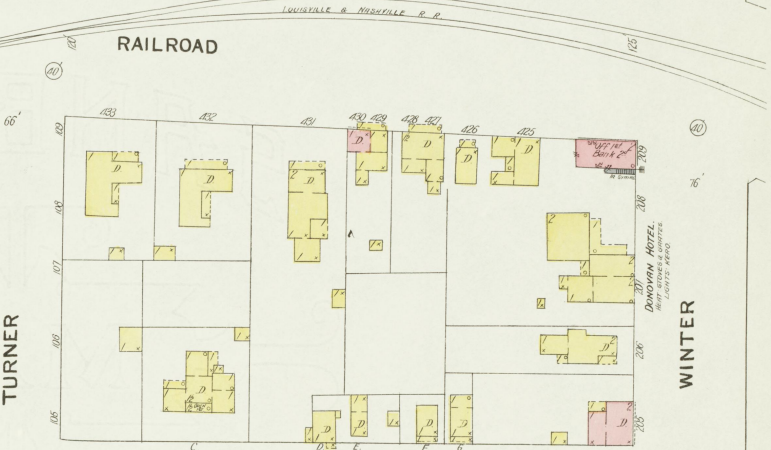
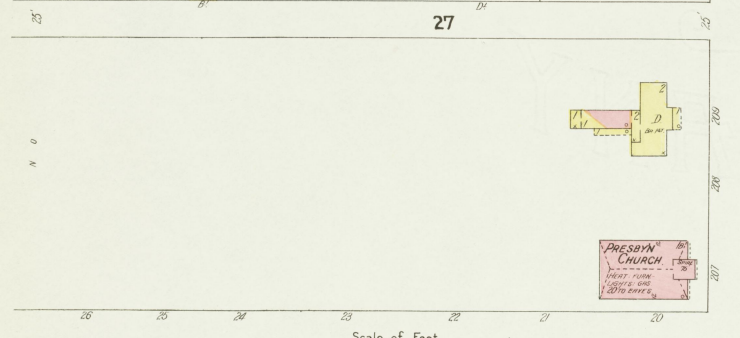
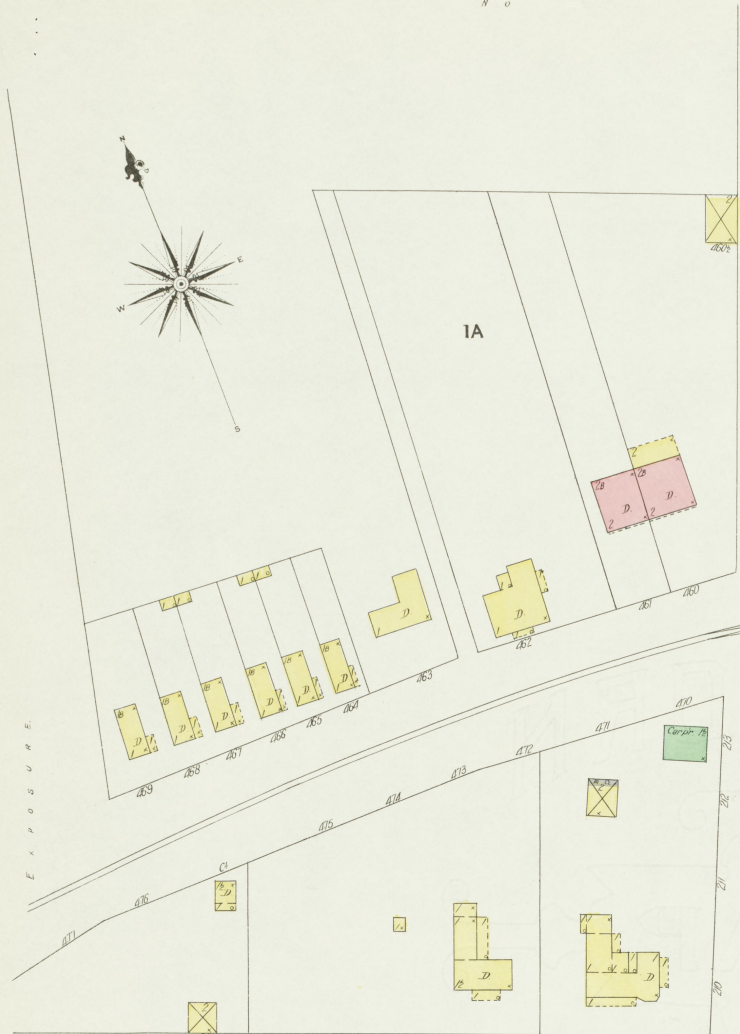
H.B. 6-7-08

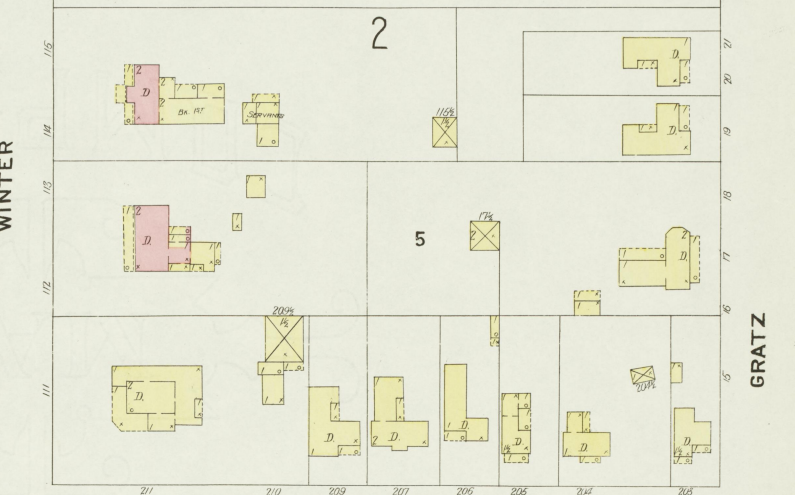
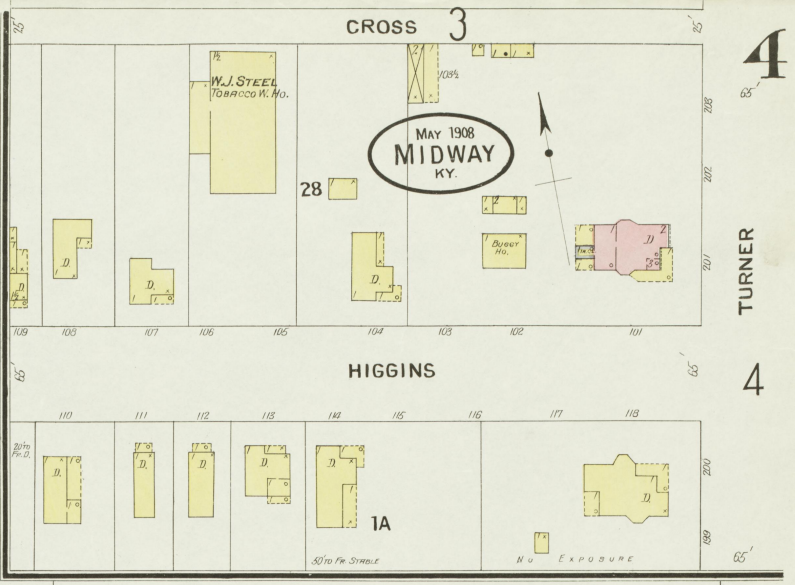
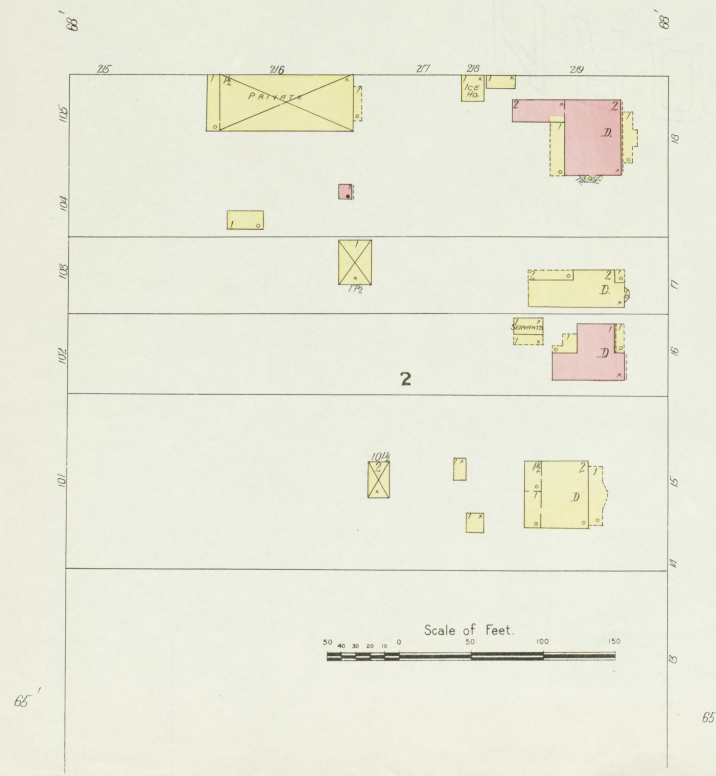
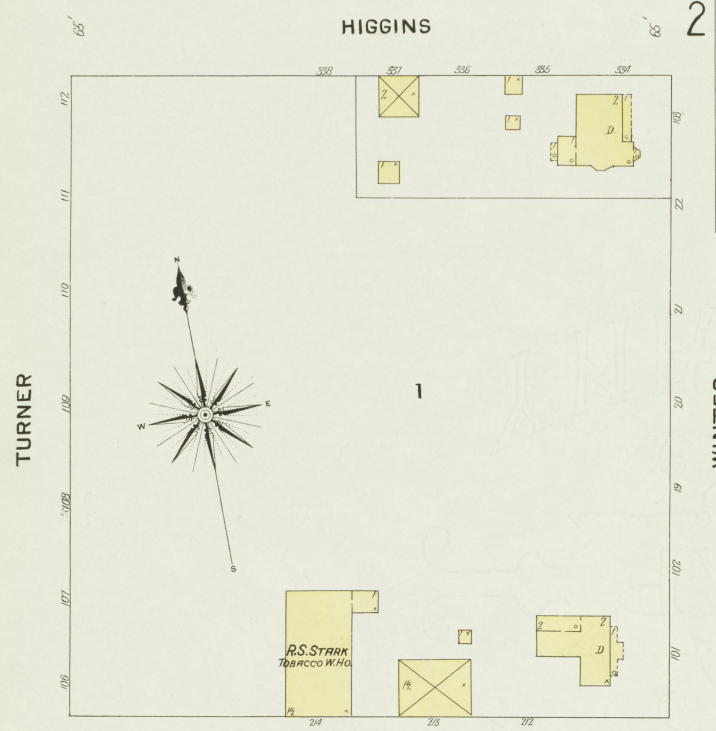
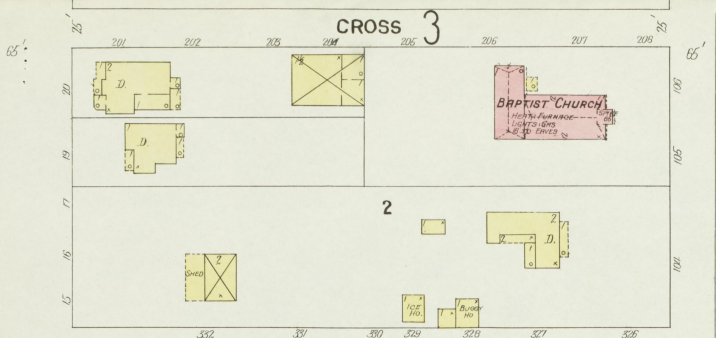


N O E X P O S U R E

N O E X P O S U R E

MAY 1908  
MIDWAY  
KY.





4

TURNER

4

GRATZ

STEPHENS

M. C. B. Co.