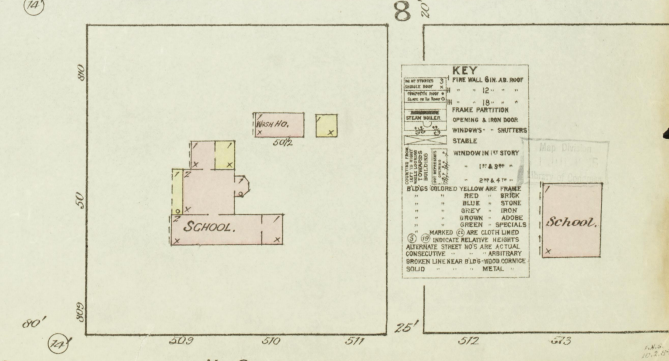
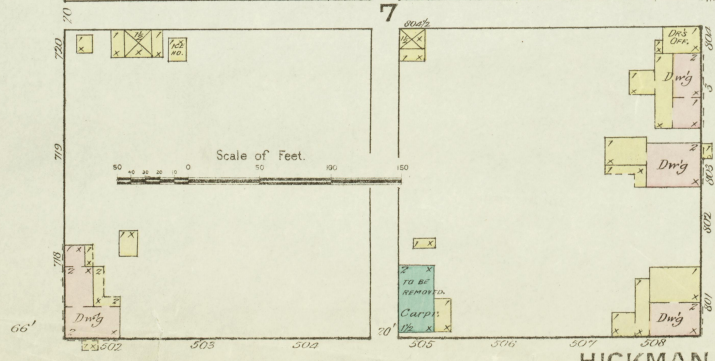
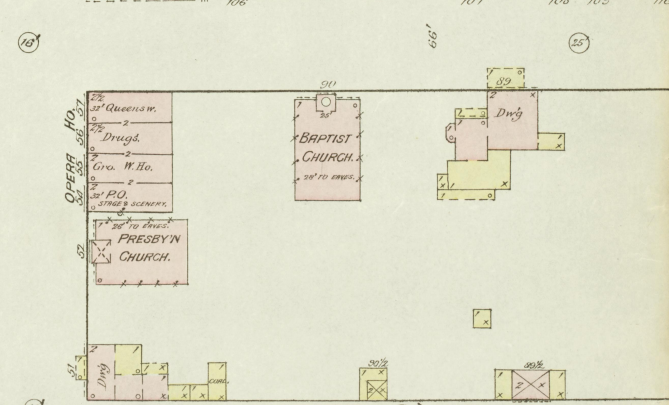
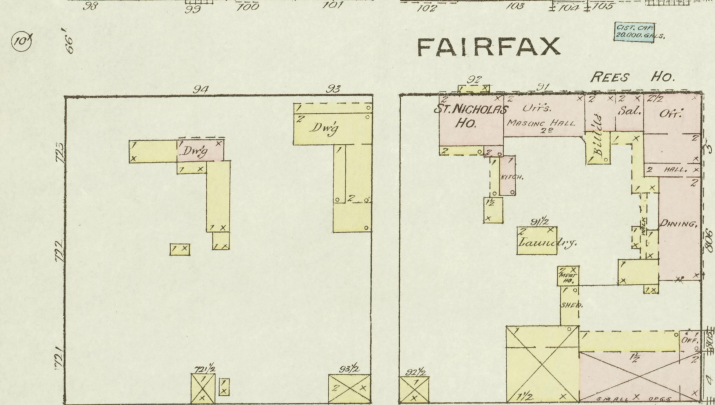
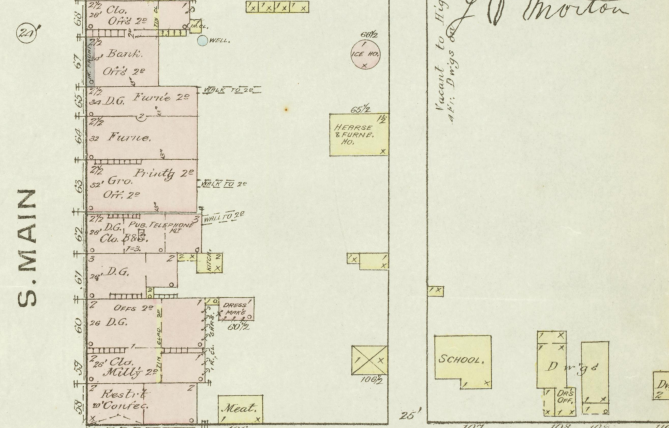
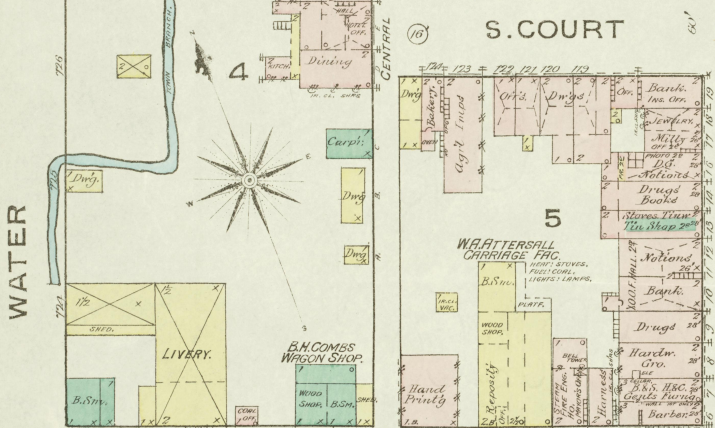
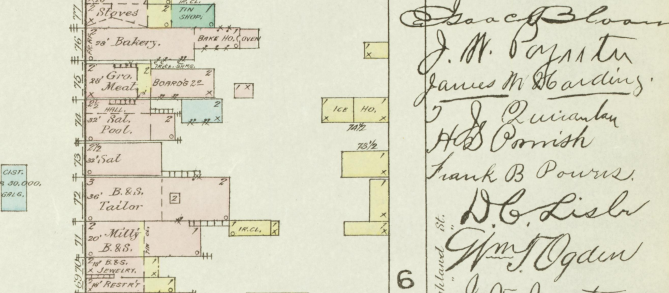
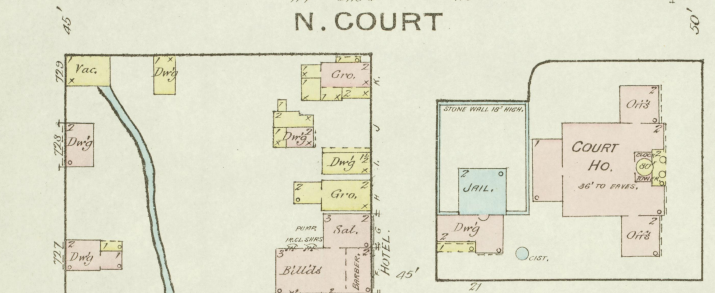
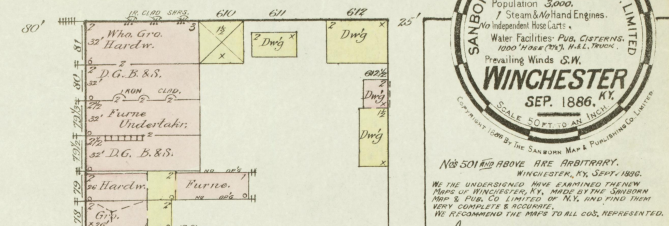
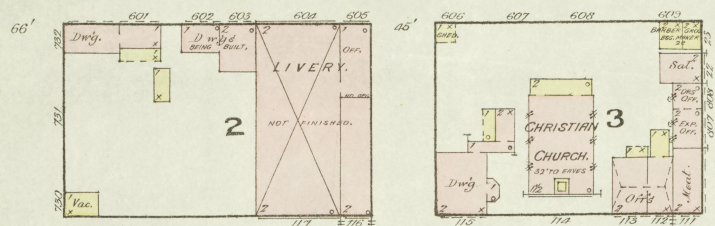


W. BROADWAY

E. BROADWAY



Sanborn
J. M. Dayster
James M. Harding
J. Duran
H. B. Parish
Frank B. Powers
D. C. Lisle
Wm. Ogden
J. O. Morton

Sanborn to Highland St.
40'; Dwg. 100'

KEY

NO. OF WINDOWS	1	FIRE WALL OR 8 IN. ROOF
DOOR	1	DOOR
FRAME PARTITION	1	FRAME PARTITION
OPENING & NEW DOOR	1	OPENING & NEW DOOR
WINDOWS - SHUTTERS	1	WINDOWS - SHUTTERS
STABLE	1	STABLE
WINDOW IN 11' STREET	1	WINDOW IN 11' STREET
2 1/4" x 4 1/4"	1	2 1/4" x 4 1/4"
PLUGS OR RED YELLOW AND FRAME	1	PLUGS OR RED YELLOW AND FRAME
BRICK	1	BRICK
STONE	1	STONE
WOOD	1	WOOD
ADJACENT	1	ADJACENT
SPECIALS	1	SPECIALS
MARKED BY ME OR OTHER	1	MARKED BY ME OR OTHER
INDICATE RELATIVE HEIGHTS	1	INDICATE RELATIVE HEIGHTS
NEED NOT SHOW ANY ACTUAL	1	NEED NOT SHOW ANY ACTUAL
ARBITRARY	1	ARBITRARY
SOLID LINE NEAR PLUGS OR BRICKS	1	SOLID LINE NEAR PLUGS OR BRICKS
METAL	1	METAL

SEP. 1886
WINCHESTER
KY.

