

C.H. & Eveline Carnie's Land

Wheat & Russell Iron Co's  
Lands.

S. 26 N. 620'

N. 66-45' West 847'

Means & Russell Iron Company's

First Addition

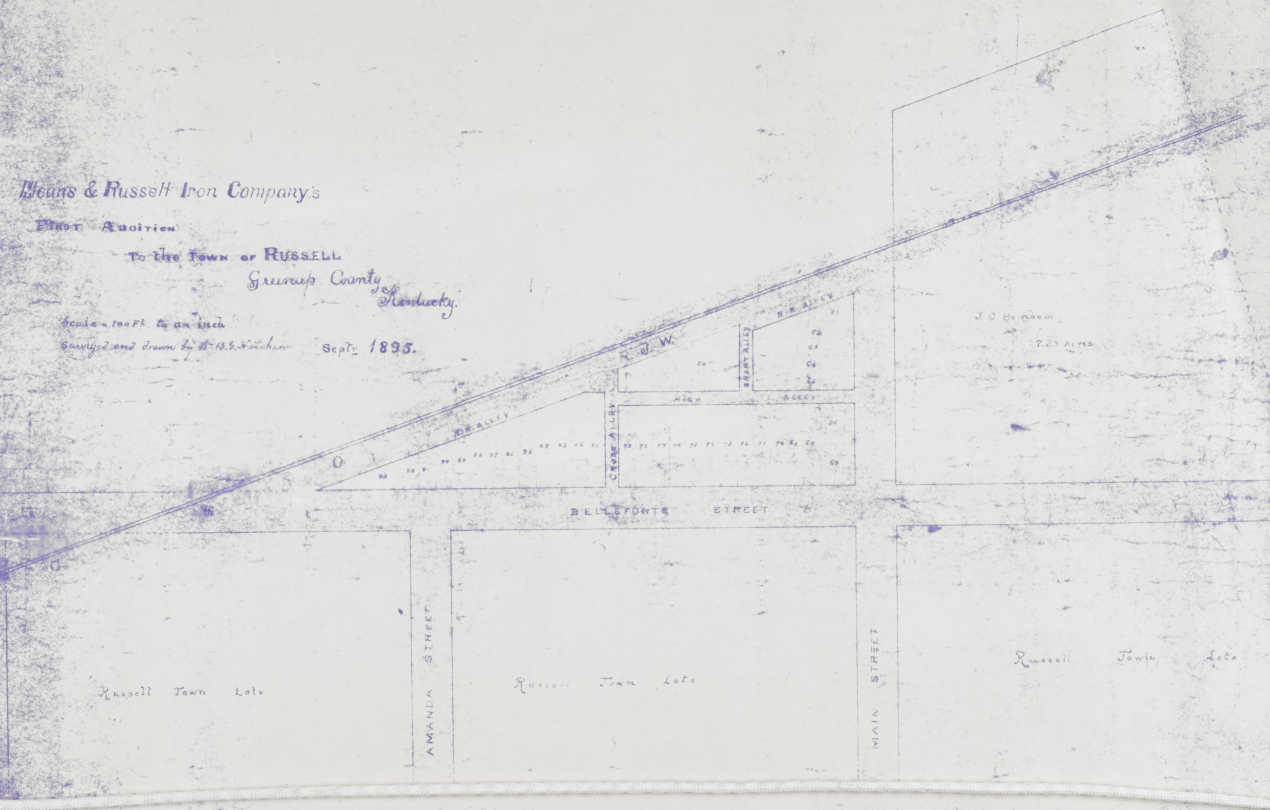
To the Town of RUSSELL

Greene County  
Kentucky

Scale - 100 FT. to an Inch

Surveyed and drawn by W. B. S. Wacker

Sept. 1895.





Plat of the Means and Russell Iron Companies

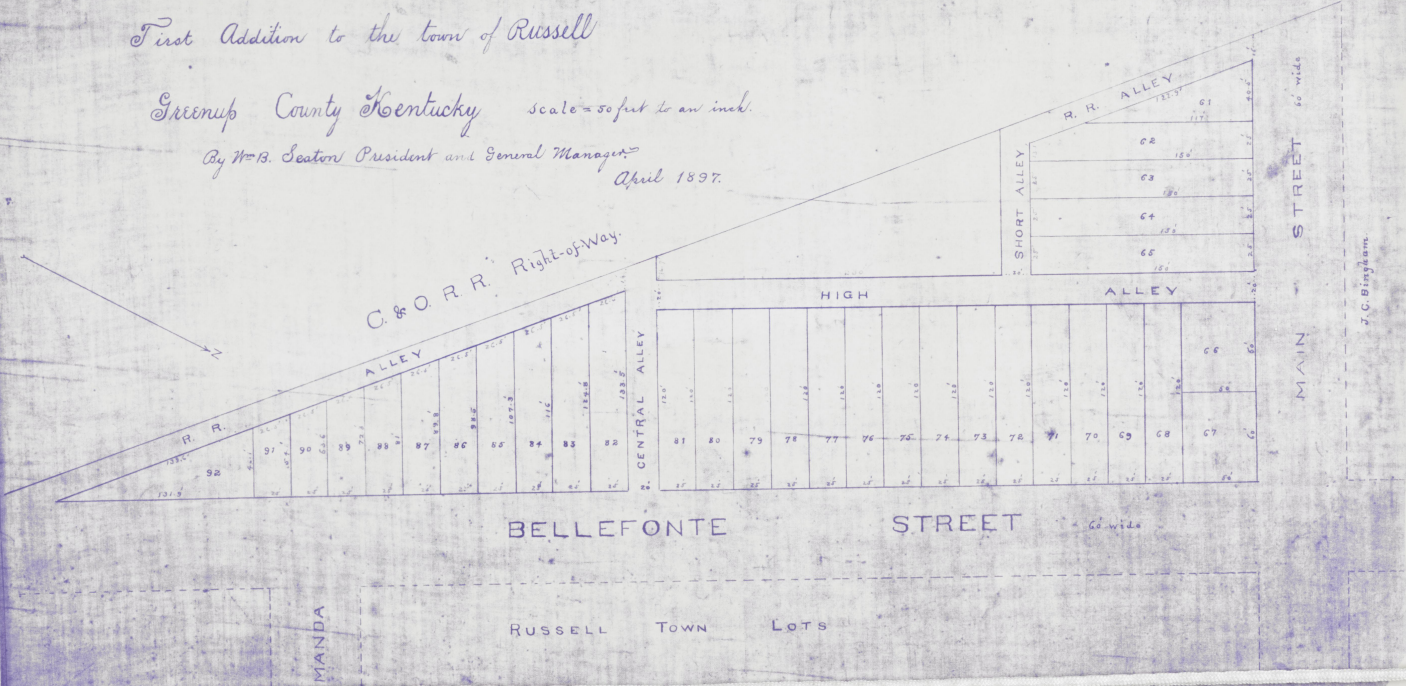
First Addition to the town of Russell

Greenup County Kentucky scale = 50 feet to an inch.

By W. B. Seaton President and General Manager  
April 1897.



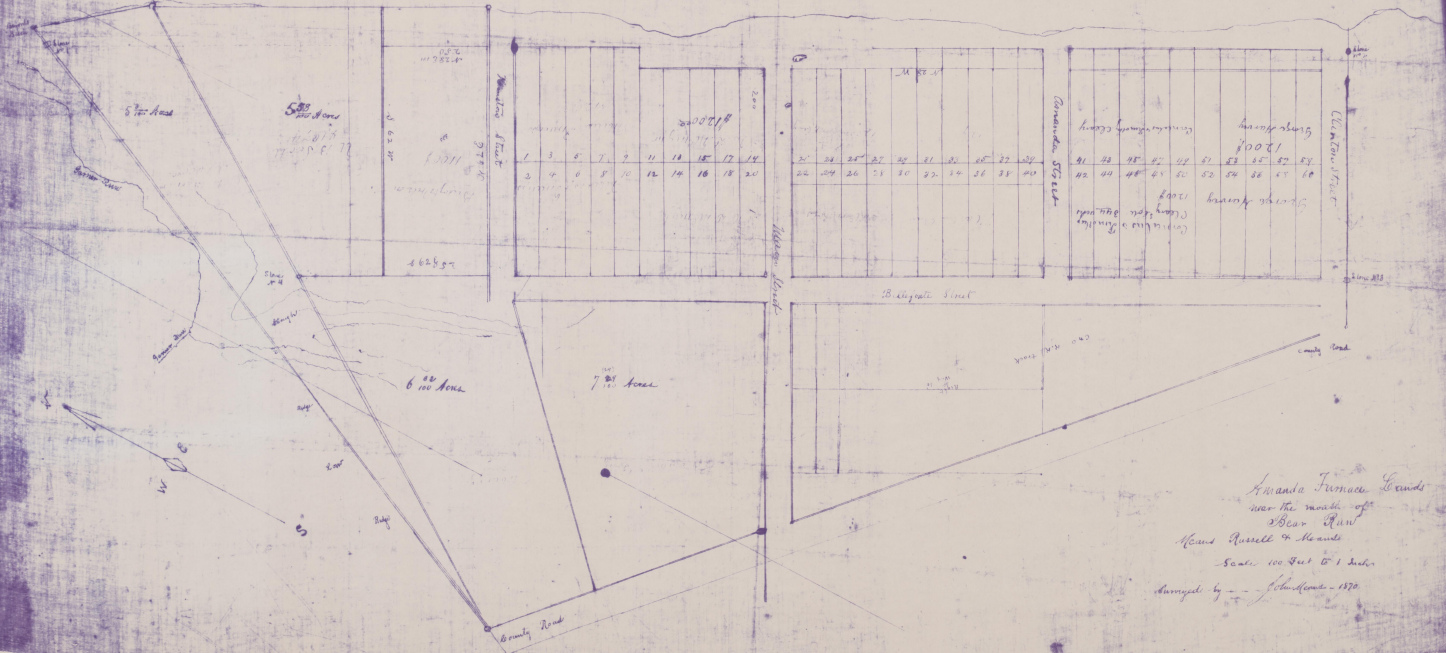
C. & O. R. R. Right-of-Way



J. C. Bingham

Ohio River

See page 182 of 183 of 184 of 185 of 186 of 187 of 188 of 189 of 190 of 191 of 192 of 193 of 194 of 195 of 196 of 197 of 198 of 199 of 200 of 201 of 202 of 203 of 204 of 205 of 206 of 207 of 208 of 209 of 210 of 211 of 212 of 213 of 214 of 215 of 216 of 217 of 218 of 219 of 220 of 221 of 222 of 223 of 224 of 225 of 226 of 227 of 228 of 229 of 230 of 231 of 232 of 233 of 234 of 235 of 236 of 237 of 238 of 239 of 240 of 241 of 242 of 243 of 244 of 245 of 246 of 247 of 248 of 249 of 250 of 251 of 252 of 253 of 254 of 255 of 256 of 257 of 258 of 259 of 260 of 261 of 262 of 263 of 264 of 265 of 266 of 267 of 268 of 269 of 270 of 271 of 272 of 273 of 274 of 275 of 276 of 277 of 278 of 279 of 280 of 281 of 282 of 283 of 284 of 285 of 286 of 287 of 288 of 289 of 290 of 291 of 292 of 293 of 294 of 295 of 296 of 297 of 298 of 299 of 300 of 301 of 302 of 303 of 304 of 305 of 306 of 307 of 308 of 309 of 310 of 311 of 312 of 313 of 314 of 315 of 316 of 317 of 318 of 319 of 320 of 321 of 322 of 323 of 324 of 325 of 326 of 327 of 328 of 329 of 330 of 331 of 332 of 333 of 334 of 335 of 336 of 337 of 338 of 339 of 340 of 341 of 342 of 343 of 344 of 345 of 346 of 347 of 348 of 349 of 350 of 351 of 352 of 353 of 354 of 355 of 356 of 357 of 358 of 359 of 360 of 361 of 362 of 363 of 364 of 365 of 366 of 367 of 368 of 369 of 370 of 371 of 372 of 373 of 374 of 375 of 376 of 377 of 378 of 379 of 380 of 381 of 382 of 383 of 384 of 385 of 386 of 387 of 388 of 389 of 390 of 391 of 392 of 393 of 394 of 395 of 396 of 397 of 398 of 399 of 400 of 401 of 402 of 403 of 404 of 405 of 406 of 407 of 408 of 409 of 410 of 411 of 412 of 413 of 414 of 415 of 416 of 417 of 418 of 419 of 420 of 421 of 422 of 423 of 424 of 425 of 426 of 427 of 428 of 429 of 430 of 431 of 432 of 433 of 434 of 435 of 436 of 437 of 438 of 439 of 440 of 441 of 442 of 443 of 444 of 445 of 446 of 447 of 448 of 449 of 450 of 451 of 452 of 453 of 454 of 455 of 456 of 457 of 458 of 459 of 460 of 461 of 462 of 463 of 464 of 465 of 466 of 467 of 468 of 469 of 470 of 471 of 472 of 473 of 474 of 475 of 476 of 477 of 478 of 479 of 480 of 481 of 482 of 483 of 484 of 485 of 486 of 487 of 488 of 489 of 490 of 491 of 492 of 493 of 494 of 495 of 496 of 497 of 498 of 499 of 500 of 501 of 502 of 503 of 504 of 505 of 506 of 507 of 508 of 509 of 510 of 511 of 512 of 513 of 514 of 515 of 516 of 517 of 518 of 519 of 520 of 521 of 522 of 523 of 524 of 525 of 526 of 527 of 528 of 529 of 530 of 531 of 532 of 533 of 534 of 535 of 536 of 537 of 538 of 539 of 540 of 541 of 542 of 543 of 544 of 545 of 546 of 547 of 548 of 549 of 550 of 551 of 552 of 553 of 554 of 555 of 556 of 557 of 558 of 559 of 560 of 561 of 562 of 563 of 564 of 565 of 566 of 567 of 568 of 569 of 570 of 571 of 572 of 573 of 574 of 575 of 576 of 577 of 578 of 579 of 580 of 581 of 582 of 583 of 584 of 585 of 586 of 587 of 588 of 589 of 590 of 591 of 592 of 593 of 594 of 595 of 596 of 597 of 598 of 599 of 600 of 601 of 602 of 603 of 604 of 605 of 606 of 607 of 608 of 609 of 610 of 611 of 612 of 613 of 614 of 615 of 616 of 617 of 618 of 619 of 620 of 621 of 622 of 623 of 624 of 625 of 626 of 627 of 628 of 629 of 630 of 631 of 632 of 633 of 634 of 635 of 636 of 637 of 638 of 639 of 640 of 641 of 642 of 643 of 644 of 645 of 646 of 647 of 648 of 649 of 650 of 651 of 652 of 653 of 654 of 655 of 656 of 657 of 658 of 659 of 660 of 661 of 662 of 663 of 664 of 665 of 666 of 667 of 668 of 669 of 670 of 671 of 672 of 673 of 674 of 675 of 676 of 677 of 678 of 679 of 680 of 681 of 682 of 683 of 684 of 685 of 686 of 687 of 688 of 689 of 690 of 691 of 692 of 693 of 694 of 695 of 696 of 697 of 698 of 699 of 700 of 701 of 702 of 703 of 704 of 705 of 706 of 707 of 708 of 709 of 710 of 711 of 712 of 713 of 714 of 715 of 716 of 717 of 718 of 719 of 720 of 721 of 722 of 723 of 724 of 725 of 726 of 727 of 728 of 729 of 730 of 731 of 732 of 733 of 734 of 735 of 736 of 737 of 738 of 739 of 740 of 741 of 742 of 743 of 744 of 745 of 746 of 747 of 748 of 749 of 750 of 751 of 752 of 753 of 754 of 755 of 756 of 757 of 758 of 759 of 760 of 761 of 762 of 763 of 764 of 765 of 766 of 767 of 768 of 769 of 770 of 771 of 772 of 773 of 774 of 775 of 776 of 777 of 778 of 779 of 780 of 781 of 782 of 783 of 784 of 785 of 786 of 787 of 788 of 789 of 790 of 791 of 792 of 793 of 794 of 795 of 796 of 797 of 798 of 799 of 800 of 801 of 802 of 803 of 804 of 805 of 806 of 807 of 808 of 809 of 810 of 811 of 812 of 813 of 814 of 815 of 816 of 817 of 818 of 819 of 820 of 821 of 822 of 823 of 824 of 825 of 826 of 827 of 828 of 829 of 830 of 831 of 832 of 833 of 834 of 835 of 836 of 837 of 838 of 839 of 840 of 841 of 842 of 843 of 844 of 845 of 846 of 847 of 848 of 849 of 850 of 851 of 852 of 853 of 854 of 855 of 856 of 857 of 858 of 859 of 860 of 861 of 862 of 863 of 864 of 865 of 866 of 867 of 868 of 869 of 870 of 871 of 872 of 873 of 874 of 875 of 876 of 877 of 878 of 879 of 880 of 881 of 882 of 883 of 884 of 885 of 886 of 887 of 888 of 889 of 890 of 891 of 892 of 893 of 894 of 895 of 896 of 897 of 898 of 899 of 900 of 901 of 902 of 903 of 904 of 905 of 906 of 907 of 908 of 909 of 910 of 911 of 912 of 913 of 914 of 915 of 916 of 917 of 918 of 919 of 920 of 921 of 922 of 923 of 924 of 925 of 926 of 927 of 928 of 929 of 930 of 931 of 932 of 933 of 934 of 935 of 936 of 937 of 938 of 939 of 940 of 941 of 942 of 943 of 944 of 945 of 946 of 947 of 948 of 949 of 950 of 951 of 952 of 953 of 954 of 955 of 956 of 957 of 958 of 959 of 960 of 961 of 962 of 963 of 964 of 965 of 966 of 967 of 968 of 969 of 970 of 971 of 972 of 973 of 974 of 975 of 976 of 977 of 978 of 979 of 980 of 981 of 982 of 983 of 984 of 985 of 986 of 987 of 988 of 989 of 990 of 991 of 992 of 993 of 994 of 995 of 996 of 997 of 998 of 999 of 1000



1	2	3	4	5	6	7	8	9	10	11	12	13	14	15	16	17	18	19	20
21	22	23	24	25	26	27	28	29	30	31	32	33	34	35	36	37	38	39	40

41	42	43	44	45	46	47	48	49	50	51	52	53	54	55	56	57	58	59	60
61	62	63	64	65	66	67	68	69	70	71	72	73	74	75	76	77	78	79	80

Amanda Furnace Lands  
 near the mouth of  
 Bear River  
 James Russell & Son  
 Scale 100 Feet to 1 Inch  
 Surveyed by J. H. Russell - 1870



# A GREAT TRI-STATE CITY IN OHIO KENTUCKY WEST VIRGINIA

APRIL 1905  
SCALE 15-2500'

POPULATION (BASED ON VOTE OF RECENT ELECTION), 75,820.

Data compiled by Committee representing the Commercial Organizations of Ironton, Ohio, Ashland and Catlettsburg, Kentucky, and Huntington, W. Virginia.

## THERE IS WITHIN THIS TERRITORY

1 Iron Mine, daily capacity	1,400 Tons
2 Iron Mine, daily capacity	800 "
3 Iron Mine, daily capacity	700 "
4 Iron Mine, daily capacity	700 "
5 Iron Mine, daily capacity	600 "
6 Iron Mine, daily capacity	500 "
7 Iron Mine, daily capacity	400 "
8 Iron Mine, daily capacity	300 "
9 Iron Mine, daily capacity	200 "
10 Iron Mine, daily capacity	100 "
11 Iron Mine, daily capacity	100 "
12 Iron Mine, daily capacity	100 "
13 Iron Mine, daily capacity	100 "
14 Iron Mine, daily capacity	100 "
15 Iron Mine, daily capacity	100 "
16 Iron Mine, daily capacity	100 "
17 Iron Mine, daily capacity	100 "
18 Iron Mine, daily capacity	100 "
19 Iron Mine, daily capacity	100 "
20 Iron Mine, daily capacity	100 "
21 Iron Mine, daily capacity	100 "
22 Iron Mine, daily capacity	100 "
23 Iron Mine, daily capacity	100 "
24 Iron Mine, daily capacity	100 "
25 Iron Mine, daily capacity	100 "
26 Iron Mine, daily capacity	100 "
27 Iron Mine, daily capacity	100 "
28 Iron Mine, daily capacity	100 "
29 Iron Mine, daily capacity	100 "
30 Iron Mine, daily capacity	100 "
31 Iron Mine, daily capacity	100 "
32 Iron Mine, daily capacity	100 "
33 Iron Mine, daily capacity	100 "
34 Iron Mine, daily capacity	100 "
35 Iron Mine, daily capacity	100 "
36 Iron Mine, daily capacity	100 "
37 Iron Mine, daily capacity	100 "
38 Iron Mine, daily capacity	100 "
39 Iron Mine, daily capacity	100 "
40 Iron Mine, daily capacity	100 "
41 Iron Mine, daily capacity	100 "
42 Iron Mine, daily capacity	100 "
43 Iron Mine, daily capacity	100 "
44 Iron Mine, daily capacity	100 "
45 Iron Mine, daily capacity	100 "
46 Iron Mine, daily capacity	100 "
47 Iron Mine, daily capacity	100 "
48 Iron Mine, daily capacity	100 "
49 Iron Mine, daily capacity	100 "
50 Iron Mine, daily capacity	100 "
51 Iron Mine, daily capacity	100 "
52 Iron Mine, daily capacity	100 "
53 Iron Mine, daily capacity	100 "
54 Iron Mine, daily capacity	100 "
55 Iron Mine, daily capacity	100 "
56 Iron Mine, daily capacity	100 "
57 Iron Mine, daily capacity	100 "
58 Iron Mine, daily capacity	100 "
59 Iron Mine, daily capacity	100 "
60 Iron Mine, daily capacity	100 "
61 Iron Mine, daily capacity	100 "
62 Iron Mine, daily capacity	100 "
63 Iron Mine, daily capacity	100 "
64 Iron Mine, daily capacity	100 "
65 Iron Mine, daily capacity	100 "
66 Iron Mine, daily capacity	100 "
67 Iron Mine, daily capacity	100 "
68 Iron Mine, daily capacity	100 "
69 Iron Mine, daily capacity	100 "
70 Iron Mine, daily capacity	100 "
71 Iron Mine, daily capacity	100 "
72 Iron Mine, daily capacity	100 "
73 Iron Mine, daily capacity	100 "
74 Iron Mine, daily capacity	100 "
75 Iron Mine, daily capacity	100 "
76 Iron Mine, daily capacity	100 "
77 Iron Mine, daily capacity	100 "
78 Iron Mine, daily capacity	100 "
79 Iron Mine, daily capacity	100 "
80 Iron Mine, daily capacity	100 "
81 Iron Mine, daily capacity	100 "
82 Iron Mine, daily capacity	100 "
83 Iron Mine, daily capacity	100 "
84 Iron Mine, daily capacity	100 "
85 Iron Mine, daily capacity	100 "
86 Iron Mine, daily capacity	100 "
87 Iron Mine, daily capacity	100 "
88 Iron Mine, daily capacity	100 "
89 Iron Mine, daily capacity	100 "
90 Iron Mine, daily capacity	100 "
91 Iron Mine, daily capacity	100 "
92 Iron Mine, daily capacity	100 "
93 Iron Mine, daily capacity	100 "
94 Iron Mine, daily capacity	100 "
95 Iron Mine, daily capacity	100 "
96 Iron Mine, daily capacity	100 "
97 Iron Mine, daily capacity	100 "
98 Iron Mine, daily capacity	100 "
99 Iron Mine, daily capacity	100 "
100 Iron Mine, daily capacity	100 "

8 Machine Shops, giving employment to	1,200 Laborers.
1 Car Works, turning out 25 cars daily, and giving employment to	1,500 "
1 Frame Factory, giving employment to	300 "
6 Cigar Factories, giving employment to	600 "
2 Carriage, Wagon & Rim Works, giving employment to	200 "
And numerous small factories giving employment to from 5 to 25 laborers each.	

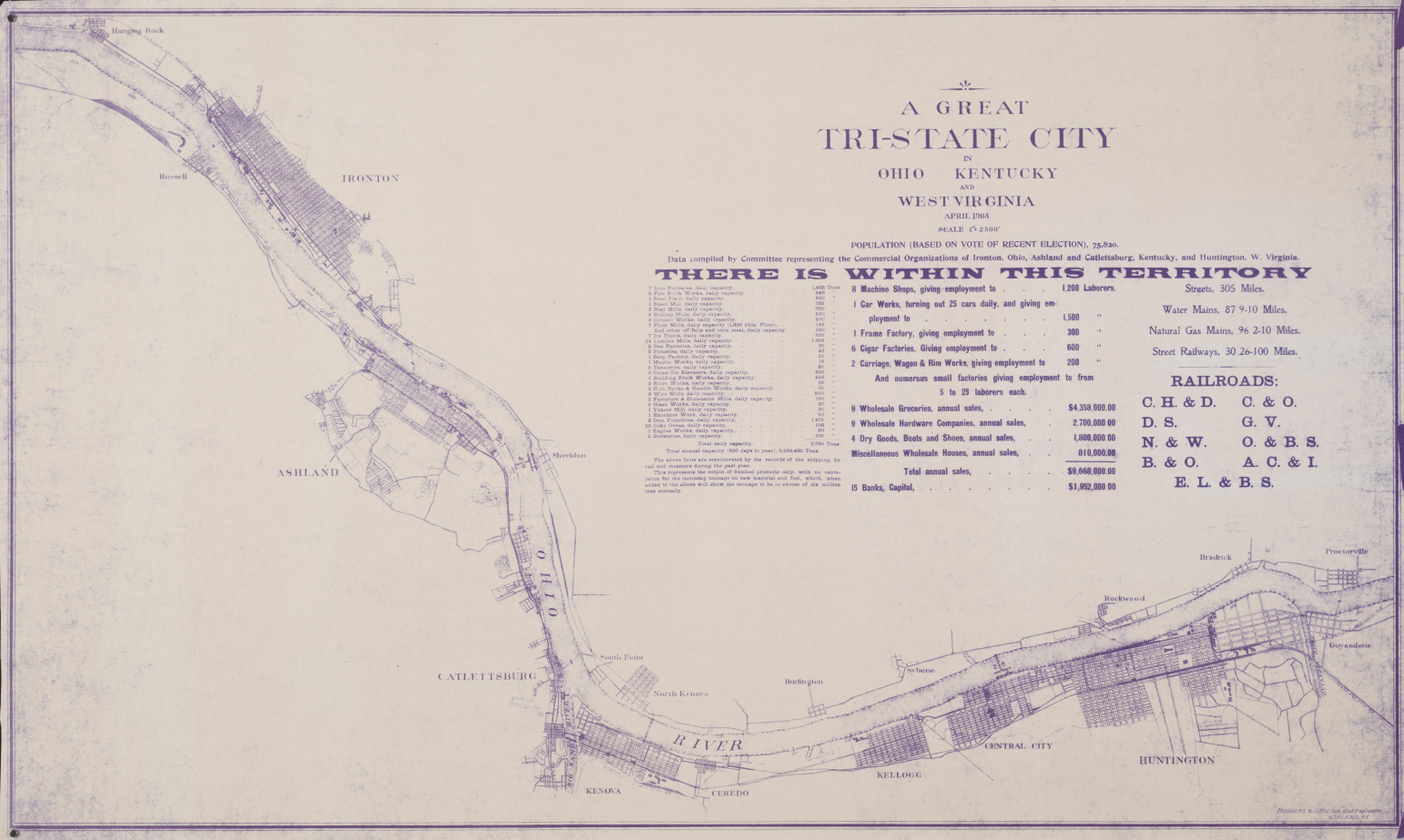
Streets, 305 Miles.  
Water Mains, 87 9-10 Miles.  
Natural Gas Mains, 96 2-10 Miles.  
Street Railways, 30 26-100 Miles.

**RAILROADS:**

C. H. & D.	C. & O.
D. S.	G. V.
N. & W.	O. & B. S.
B. & O.	A. C. & I.
E. L. & B. S.	

9 Wholesale Groceries, annual sales,	\$4,350,000.00
9 Wholesale Hardware Companies, annual sales,	2,700,000.00
4 Dry Goods, Boots and Shoes, annual sales,	1,800,000.00
Miscellaneous Wholesale Houses, annual sales,	610,000.00
<b>Total annual sales,</b>	<b>\$9,660,000.00</b>
15 Banks, Capital,	\$1,952,000.00

Total daily capacity, 9,776 Tons.  
This annual capacity 300 days to year, 2,932,800 Tons.  
The above facts are compiled by the records of the shipping by rail and otherwise during the past year.  
This represents the output of finished products only, with no allowance for the tonnage tonnage in raw materials and fuel, which, when added to the above will show the tonnage to be in excess of six million one hundred thousand.



PUBLISHED BY THE BOARD OF COMMERCE, HUNTINGTON, W. VA.