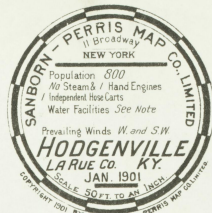
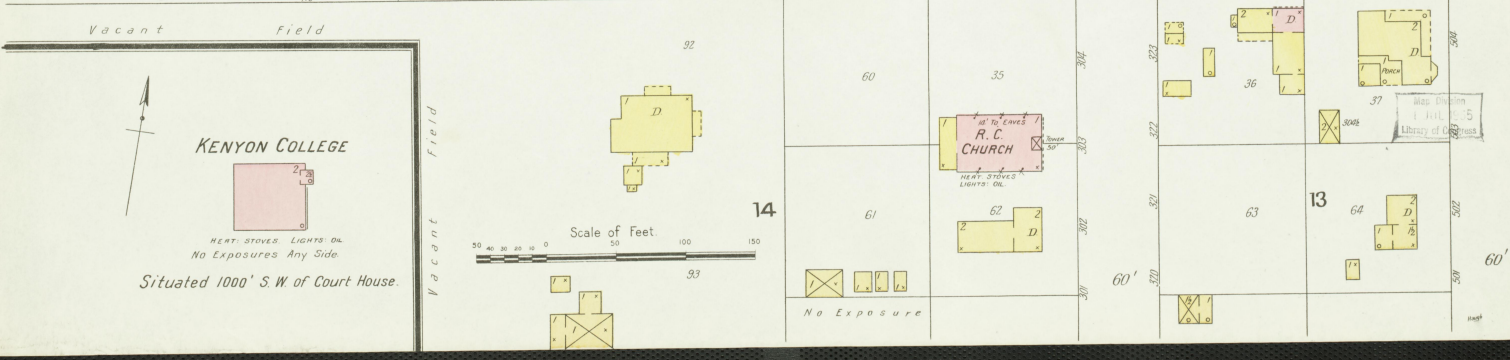
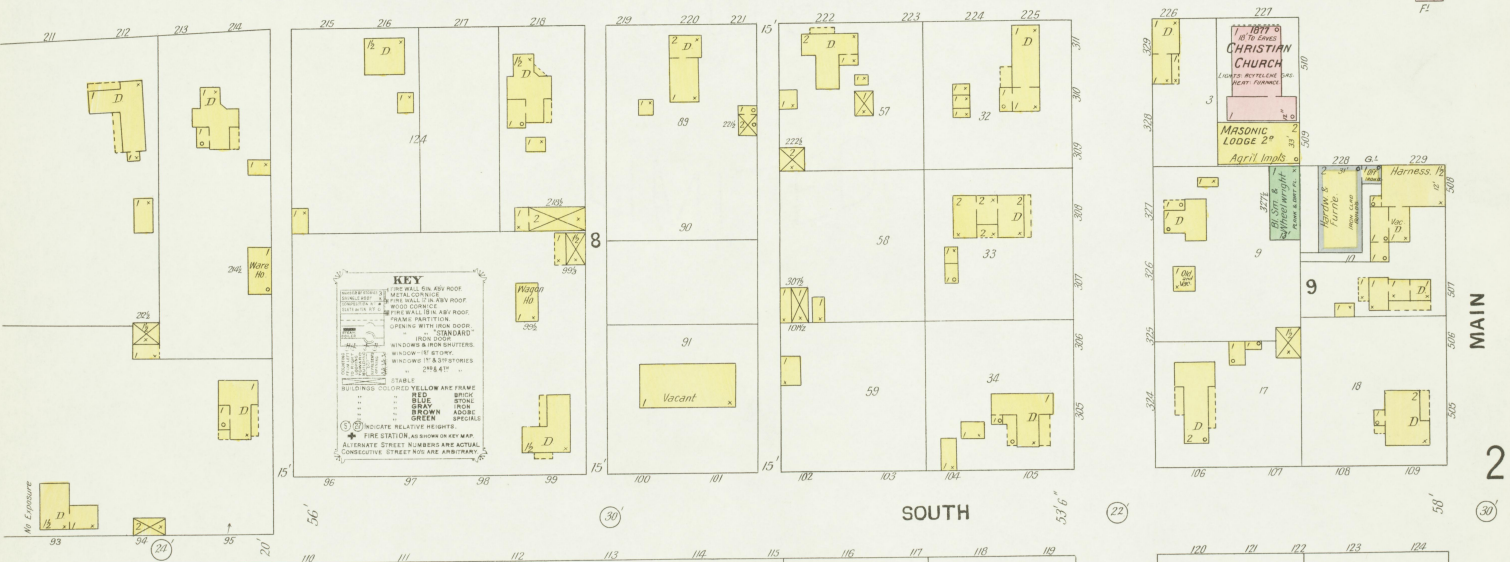
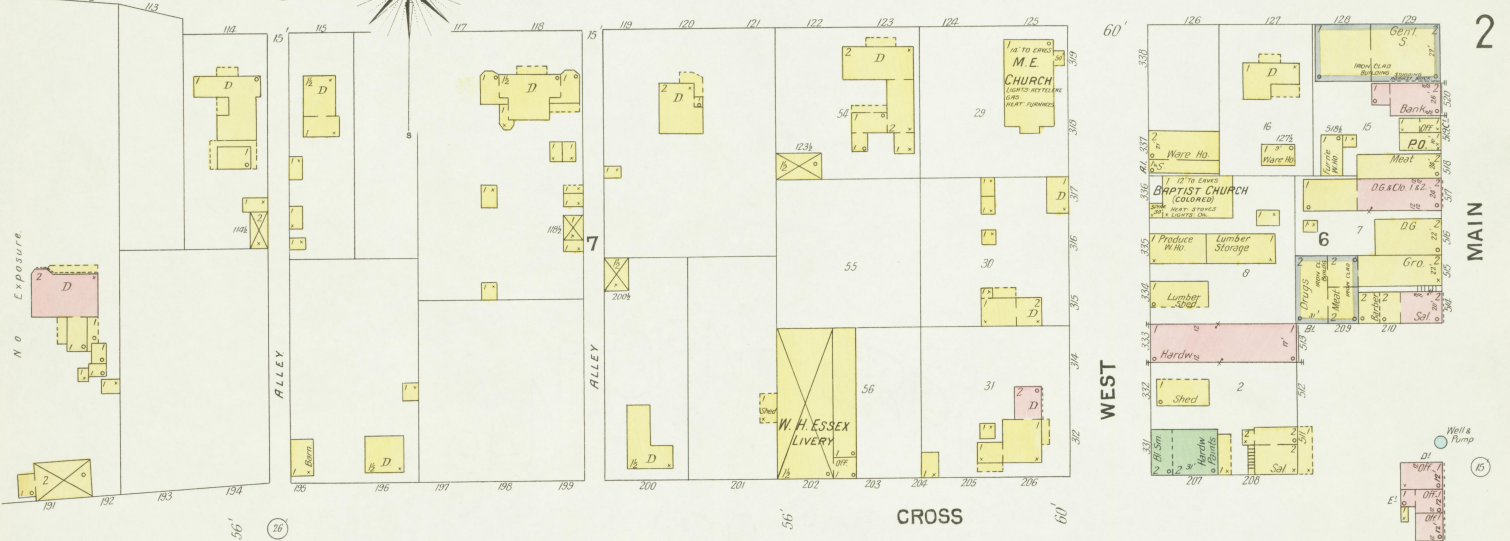
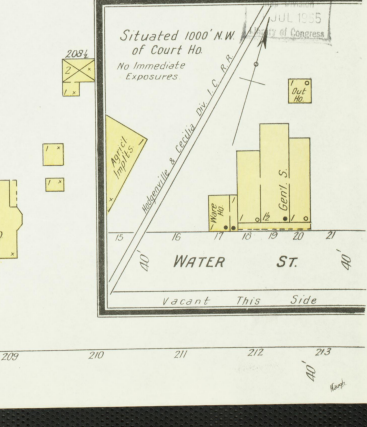
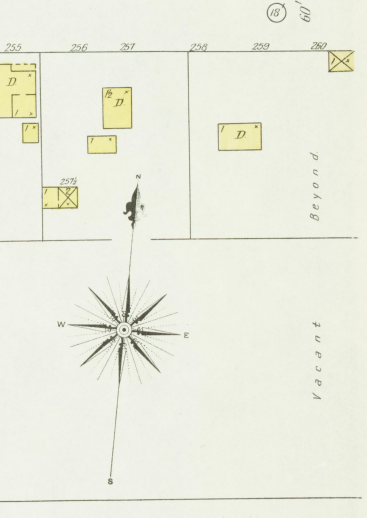
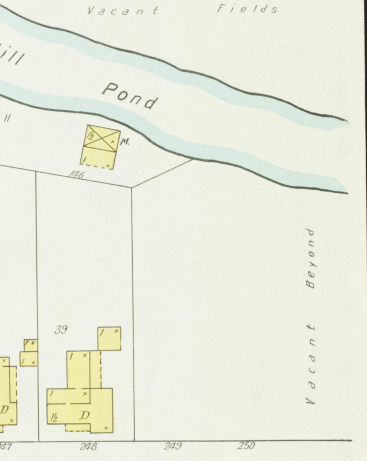
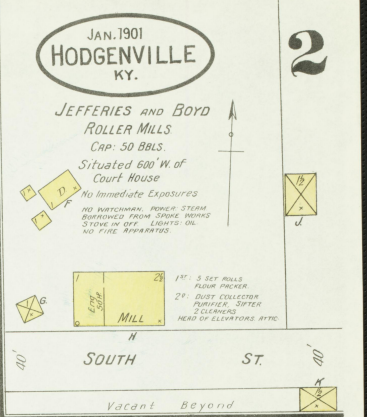
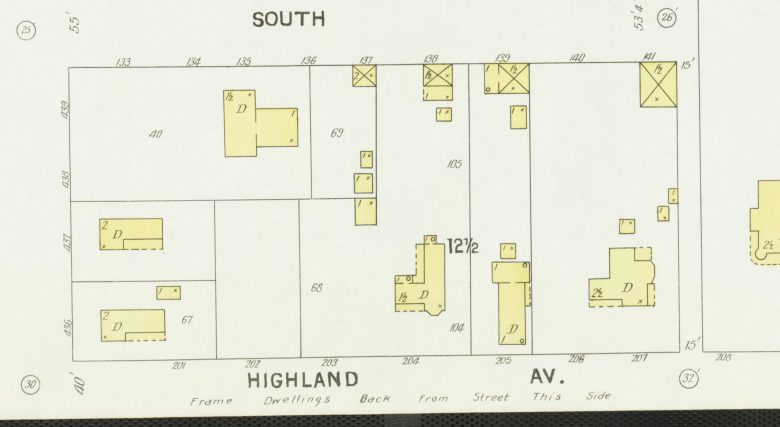
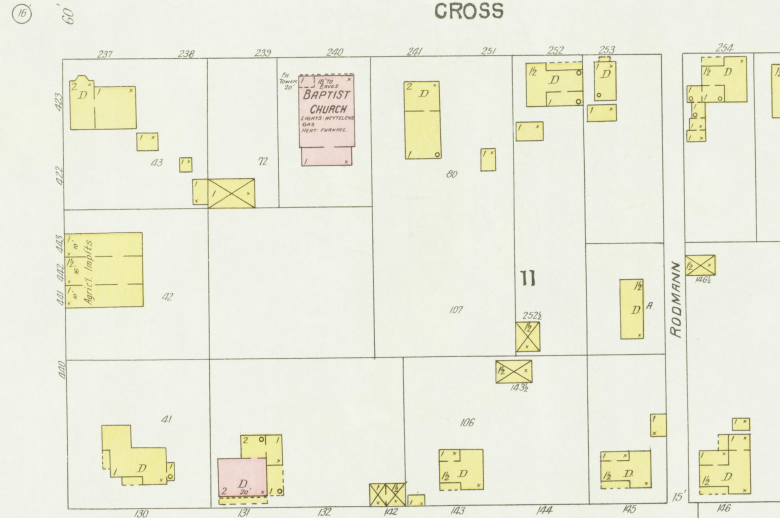
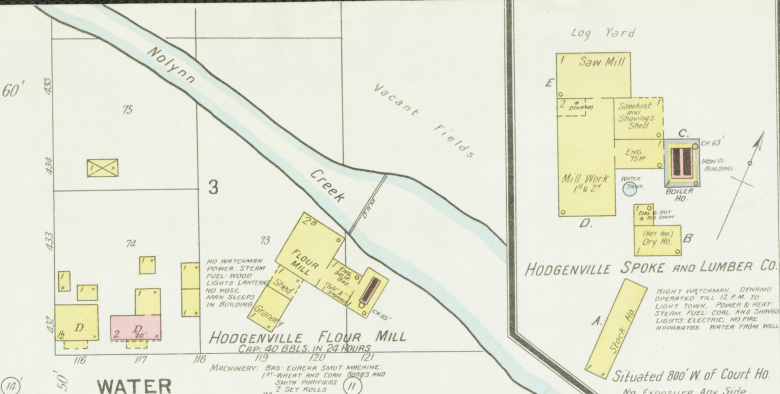
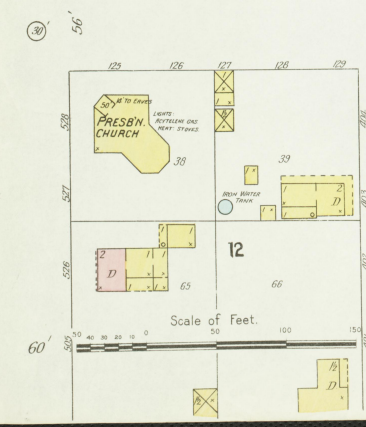
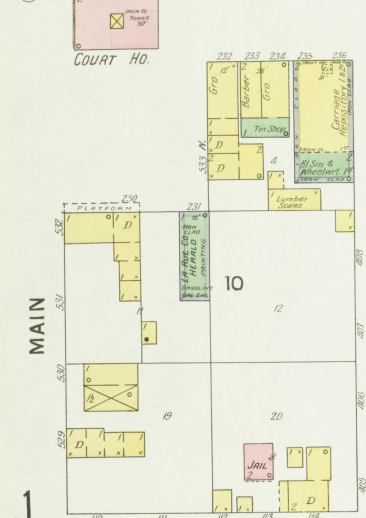
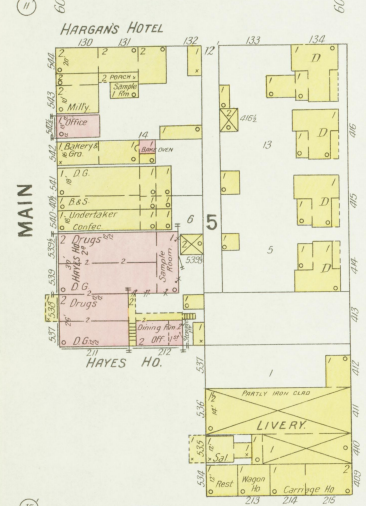
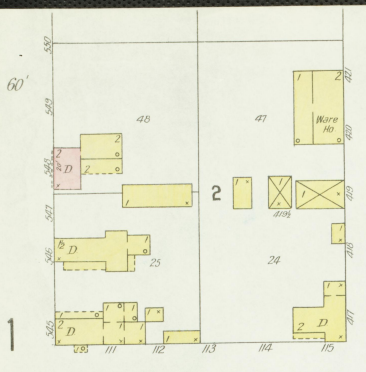


Note:
 One Hand Engine, 1000' of Cotton Hose, One Hose Reel, One H. & L. Truck (50 Extension), Volunteer Fire Dept., 32 Men, Streets Macadam, Lights Oil and Electric, Three Public Cisterns, Wells all about Town, Also Creek. No Actual Street Numbers.



Library of Congress
 First Copy Received
 FEB 7 1901
 BY DEPOSIT OF
 THE SANBORN - PERRIS MAP CO.
 SECOND COPY





Frame Dwellings Back From Street This Side

JAN. 1901
HODGENVILLE
KY.

BONDED W. Ho. No. 453
CAP. 90 BBLs.
O' BRYAN & SONS
Registered Distillery No. 453
5th District, LaRue Co. Ky.
Cap. 6 Bus. Per 24 Hours
NO WATCHMAN HEAT STOVES
LIGHTS KEROSENE

One Mile S.E. of Hodgenville, Ky.

KENTUCKY DISTILLERIES AND WARE HO. CO.

Run As: J. M. ATHERTON & CO. - INCORPORATED.
FORMERLY J. M. ATHERTON & CO.

Registered Distillery No. 87 - 5th District, LaRue Co. Ky.
Product: Bourbon and Rye Sweet Mash Whiskies
Mash Cap. 1255 Bushels Yield 4 1/2 Gallons per Bushel

NIGHT WATCHMAN HEAT STOVES
IN REFR. ROOM FILL COAL DOORS
WATER SUPPLY FROM CREEK AND WALLS
SINK ON 2nd FLOOR MADE TO DRAW TO FORCE
PUMP AND OUT OF 2nd FLOOR ATTACHED TO INJECTOR
ON SWITCH ENGINE - FIRE PAILS DISTRIBUTED
BUILDINGS CLEAN AND IN GOOD REPAIR
NO WAREHOUSE AND

ATHERTON HOTEL
F.

BONDED WARE HO. No. 87-C
CAP. 9600 BBLs
RACKS 17 TIERS
STEAM HEAT
25 FIRE PAILS DISTRIBUTED
FROM CLAD SHUTTERS ALL SIDES

BONDED WARE HO. No. 87-A
CAP. 21,286 BLS.
RACKS 13 TO 16 TIERS
STEAM HEAT
15 FIRE PAILS DISTRIBUTED
FROM CLAD SHUTTERS ALL SIDES

BONDED WARE HO. No. 87-B
CAP. 13,548 BBLs
RACKS 12 TIERS
STEAM HEAT
20 FIRE PAILS DISTRIBUTED
FROM CLAD SHUTTERS ALL SIDES

ATHERTON DISTILLERY No. 87

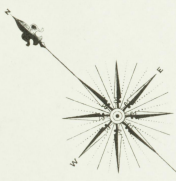
FERMENTING HO. No. 12
12 TIERS

BARDSTOWN AND GREEN RIVER TURNPIKE

Creek

Knob

Foot Bridge



Scale of Feet.
0 50 100 150

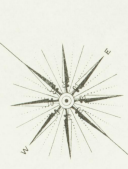
AT ATHERTONVILLE KY.
9 MILES EAST OF HODGENVILLE

Map Drawn
JUL 1, 1905
Library of Congress

JAN. 1901
HODGENVILLE
KY.

No Exposure
CATTLE SHED
No 2
OF DISTILLERY No 87
Hay Shed
C1

SLOP DRYING Hb
3



KENTUCKY DISTILLERIES AND WARE HO. CO.
(INCORPORATED)
RUN AS: RAYMOND G. SHIPMAN
FORMERLY: A. MAYFIELD AND CO.
Registered Distilleries Nos 36 & 229-5th Dist. La Rue Co. Ky.
Product: Bourbon and Rye Sweet Mash Whiskies
Cap: 711 Bushels Yield 4 1/5 Gallons per Bushel

MAYFIELD DISTILLERY No 229

DISTILLERY No 36
(BEING BUILT JAN 1901)
MASH HO.
TO BE MILL

BONDED WARE HO. No 87-D.
CAP. 18,576 BLS.
RACKS 12 TIERS
STEAM HEAT. 20 FIRE PIPES DISTRIBUTED
IRON CLAD SHUTTERS ALL SIDES
THIS WARE HO. BELONGS WITH DISTILLERY No 87

BONDED WARE HO. No 229-A
CAP. 13,335 BLS. RACKS 10 TO 15 TIERS
STEAM HEAT. 15 FIRE PIPES DISTRIBUTED
IRON CLAD SHUTTERS ALL SIDES

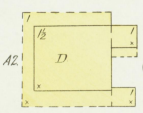
BONDED WARE HO. No 229-B
CAP. 12,940 BLS.
RACKS 15 TIERS
STEAM HEAT. 15 FIRE PIPES DISTRIBUTED
IRON CLAD SHUTTERS ALL SIDES

BONDED WARE HO. No 229-C
CAP. 16,200 BLS.
RACKS 15 TIERS
STEAM HEAT. 13 FIRE PIPES DISTRIBUTED
IRON CLAD SHUTTERS ALL SIDES

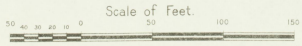
QUICK AGEING HO. No 82
STEAM PROCESS

NIGHT WATERMAN. STOVE IN YEAST ROOM
HEAT. STEAM. LEAD OIL LIGHTS. FUEL COAL.
STEAM AND FIRE BOILER. WATER SUPPLY
FROM CREEK AND WELLS. FIRE PIPES
AND SHUTTERS WATER DISTRIBUTED.
300 OF 2 1/2" ROSE ATTACHED TO FORCE PUMP
AS PER PLAN. 300 OF 2 1/2" ROSE ON SWITCH ENG.
BUILDINGS CLEAN AND IN GOOD REPAIR.
NO REWORKING AND

AT ATHERTONVILLE
9 MILES EAST OF HODGENVILLE



Dog Kennel



COUNTY ROAD

Library of Congress