

INSURANCE MAPS
of
Richmond
MADISON COUNTY
KENTUCKY

SANBORN MAP COMPANY
11 Broadway, New York

SCALE, 50 FT. TO AN INCH

APRIL 1912

Copyright, 1912, by the Sanborn Map Co.



Population 7,000. Prevailing Wind, S.W.

WATER FACILITIES

Gravity and direct pressure system of water works, installed in 1937. Water supply from two reservoirs, having a combined capacity of 250 million gallons situated 2 1/2 miles S.E. of town. Water pumped from reservoirs into stand pipe of 150,000 gallons capacity, elevated 150 ft. above business district and directly into mains by two Worthington compound duplex pumps capacity two million gallons each per 24 hours. 12 miles of water pipes, 4 to 12" diam. 100 double hydrants. Pressure from stand pipe, 75 lbs. Direct pressure 125 lbs. Average daily consumption, 500,000 gallons.

FIRE DEPARTMENT

Volunteer, one chief and 15 men. Two horses, swinging harness. Fire alarm by bell at fire station. One two horse hose wagon. One two wheel hose reel. 2000 ft. 2 1/2" rubber hose. Grades rolling. Streets Macadamized. Public lights electric.

KEY

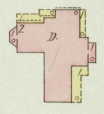
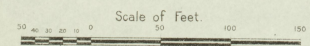
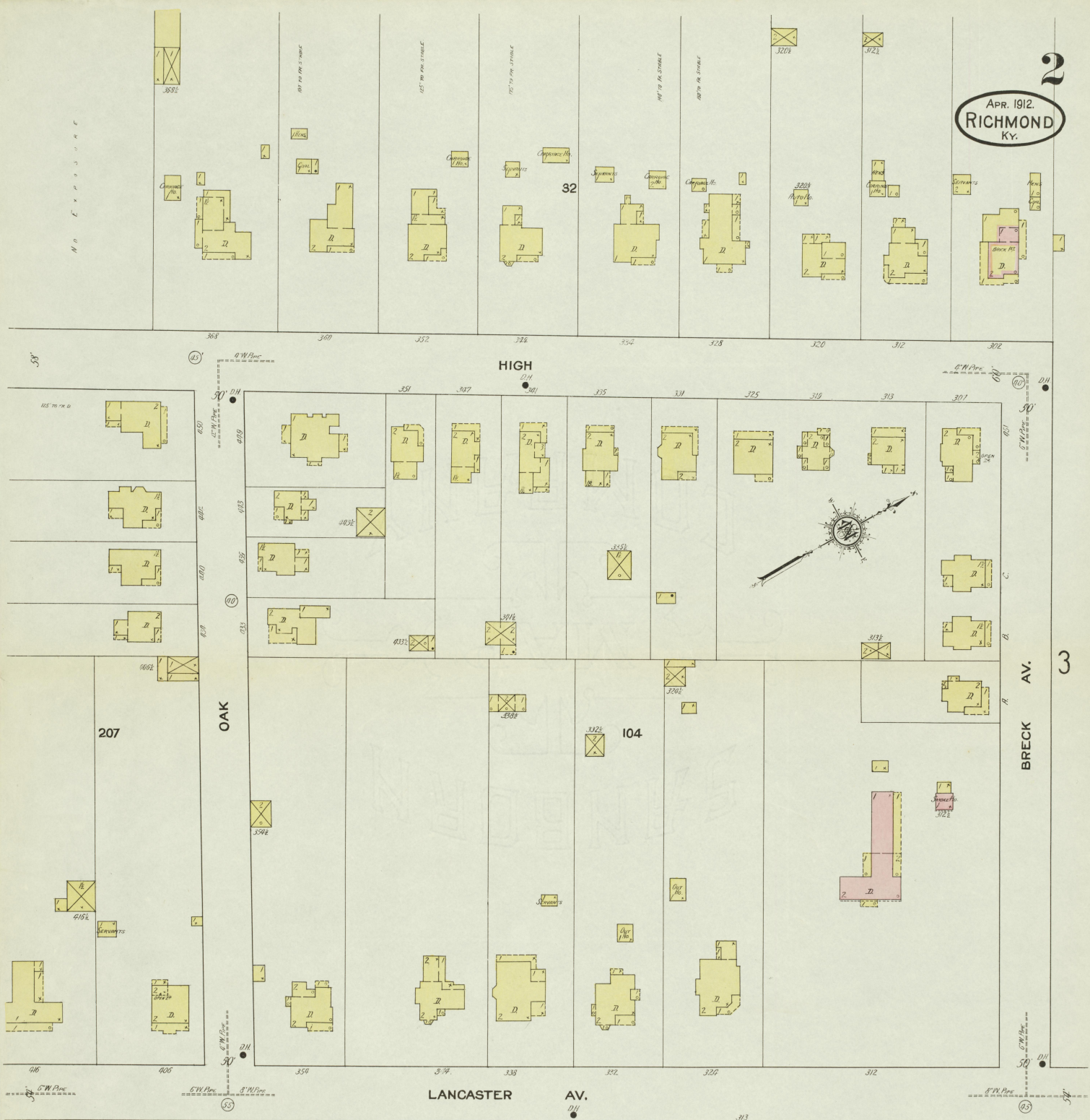
- INDUSTRIAL BUILDING
- WATER TOWER
- WATER RESERVOIR
- WATER MAIN
- WATER VALVE
- WATER PUMP
- WATER HYDRANT
- WATER PIPE
- WATER TANK
- WATER CISTERN
- WATER PUMP HOUSE
- WATER TOWER
- WATER RESERVOIR
- WATER MAIN
- WATER VALVE
- WATER PUMP
- WATER HYDRANT
- WATER PIPE
- WATER TANK
- WATER CISTERN
- WATER PUMP HOUSE

INDEX.

STREETS.		INDEX.		STREETS.		INDEX.	
Aspen Ave.	100-145	Faculty Row	425-664	Irvine, W.	100-244	Orange	300-433
B Street, N.	100-140	Fairview, S.	101-245	K Street	300-437	Orchard	500-528
Collins, N.	100-117	Fifth, N.	300-325	Lancaster Ave.	100-223	Race	501-527
Edwards Ave.	100-147	High	300-329	Laurel	300-417	Second, N.	500-519
Estill Ave.	100-227	Hill	300-343	Lyndale	501-535	Sycamore	501-524
		Hillsdale Ave.	300-371	Main, E.	100-153	Tates Creek Ave.	100-220
		Halle Irvine	100-235	Maple, N.	100-225	Third, N.	100-220
		Heath	300-335	Moberly Ave.	300-525	Walnut	100-255
		Hill	300-329	North	301-517	Water, E.	100-230
		Hill	300-371	Oak	518-649	Water, W.	100-230
		Hill	300-371				

* Indicates only one side of Street shown.

2
APR. 1912.
RICHMOND
KY.



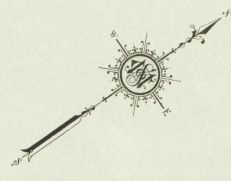
3

APR. 1912.
RICHMOND
KY.

N. 5TH ST.

4

W. MAIN



High St.

2

BRECK AV.

32

LANCASTER AV.

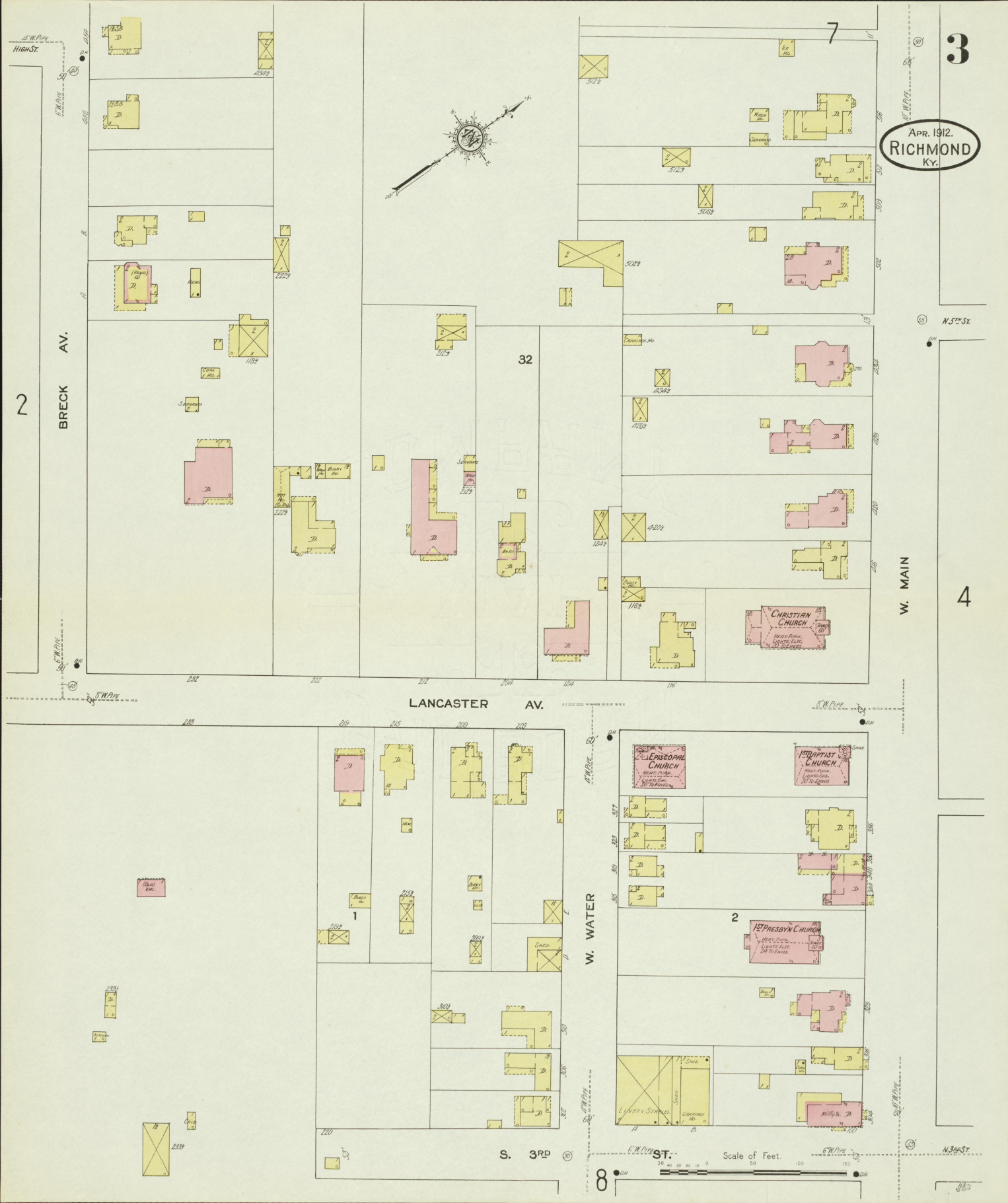
W. WATER

S. 3RD

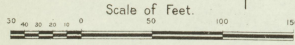
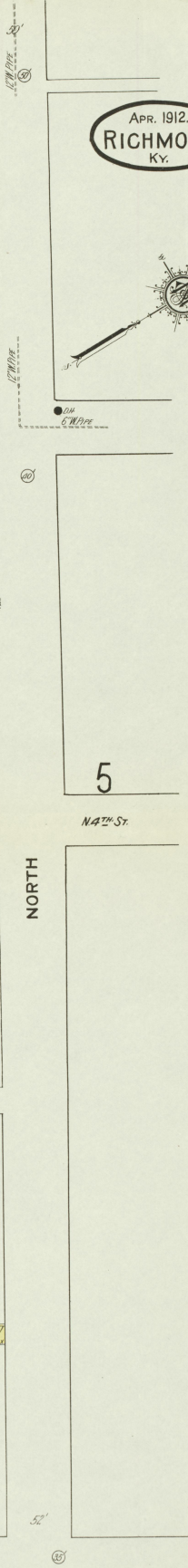
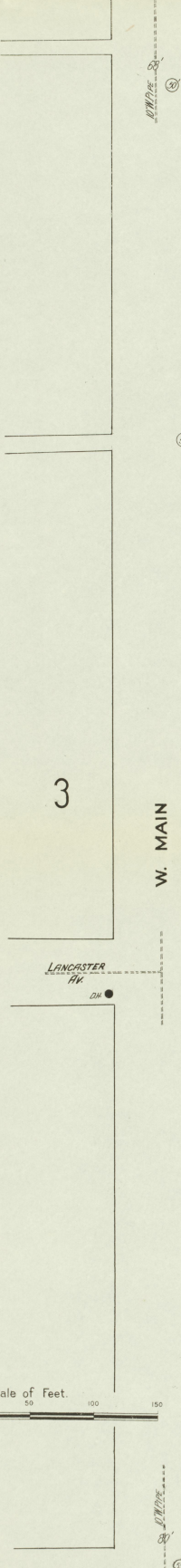
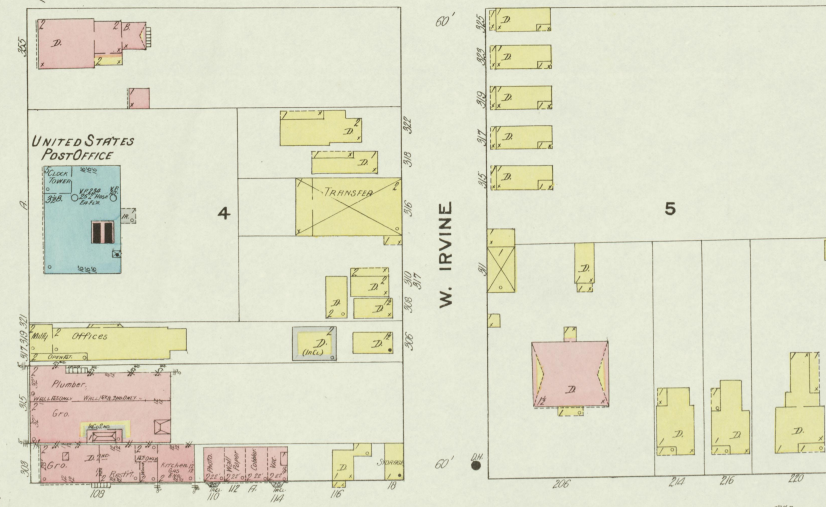
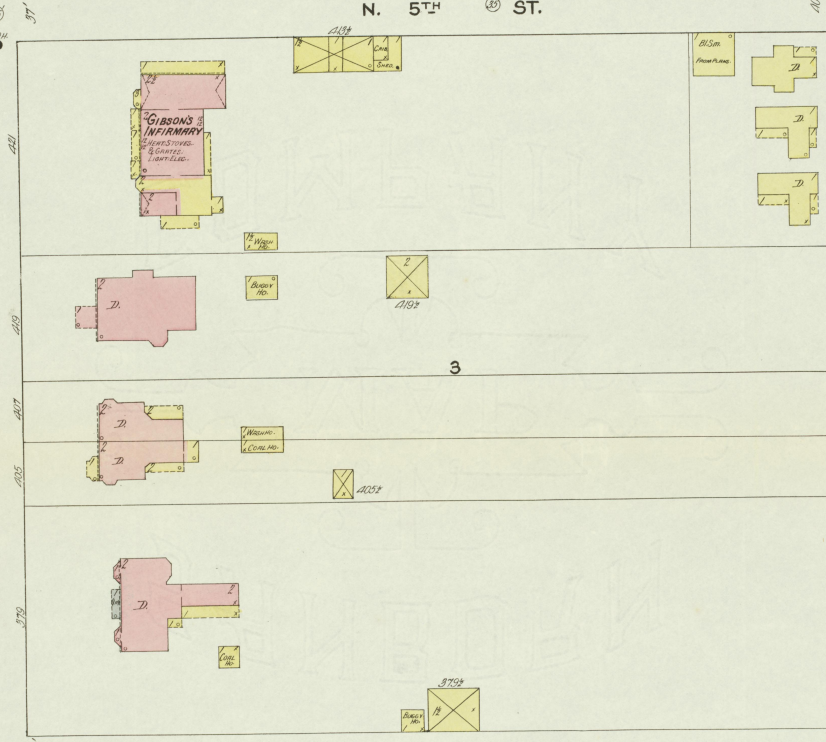
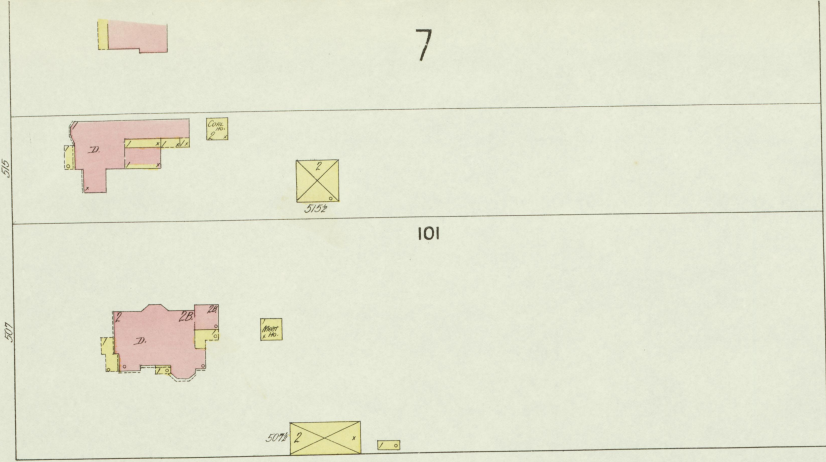
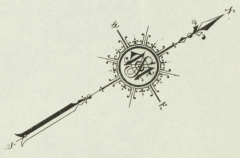
8

Scale of Feet

N. 3RD ST.



APR. 1912.
RICHMOND
Ky.



UNITED STATES
Post Office

GIBSON'S
LIVERY

TRANSFER

N. 3RD ST.

N. 5TH ST.

W. MAIN

NORTH

W. IRVINE

LANCASTER
Av.

N. 4TH ST.

S. 9TH ST.

8

9

7

101

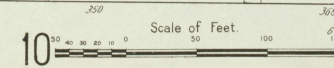
3

4

5

5

LAUREL
APR. 1912.
RICHMOND
KY.



PATTIE A. CLAY, INFIRMARY.
HEAT-STOVES
LIGHT-ELECTRIC.

Boarding

4

6

9

10

NORTH

MOBERLY AV.

N. 5TH ST.

N. 4TH ST.

N. 3RD ST.

LYNDALE

WOODLAND AV.

GLYNDON AV.

7

208

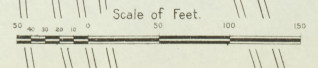
209

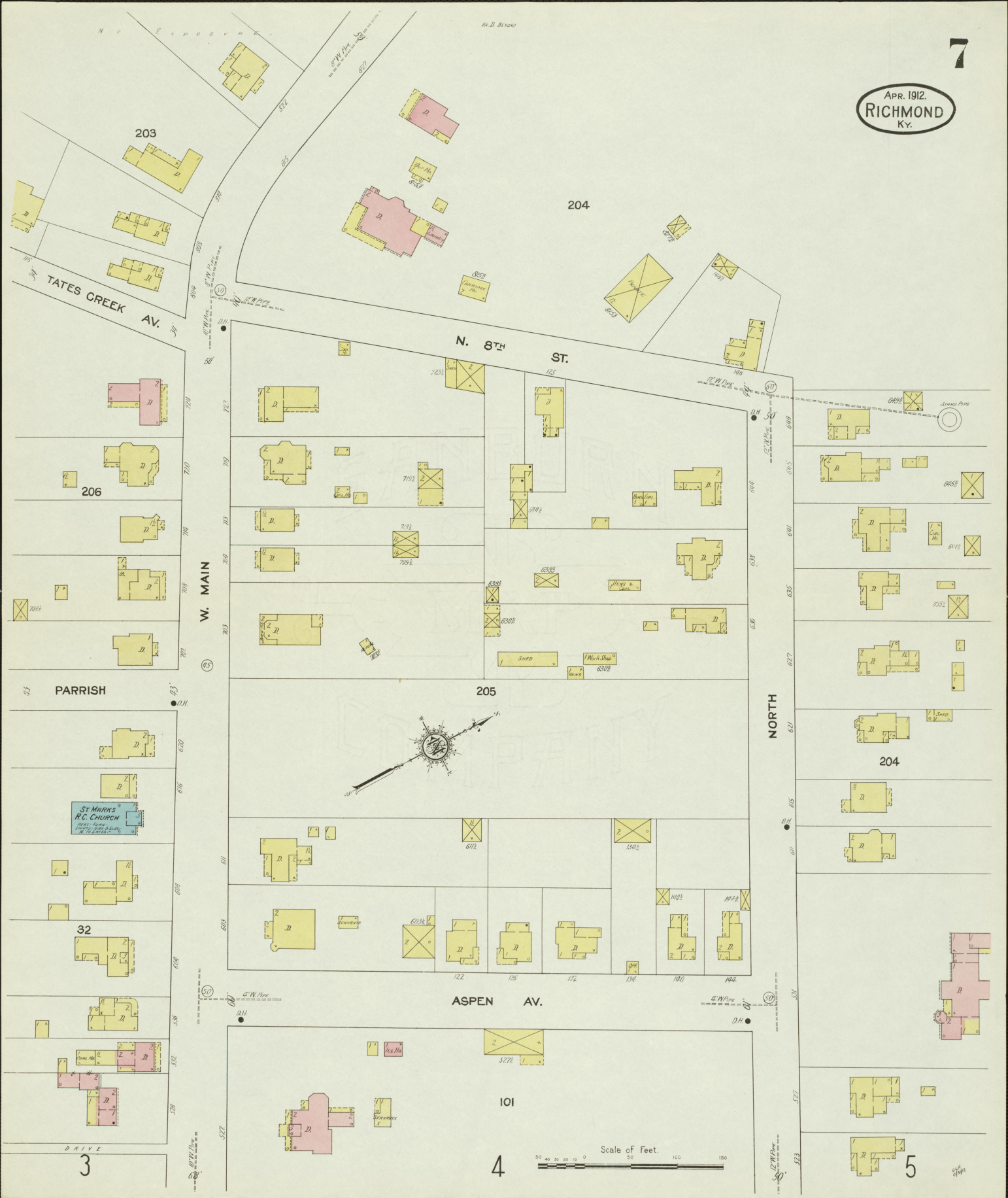
102

103

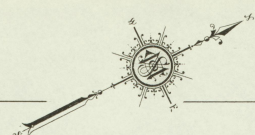
213

210



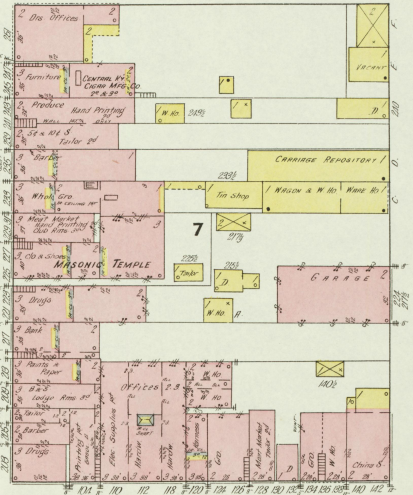
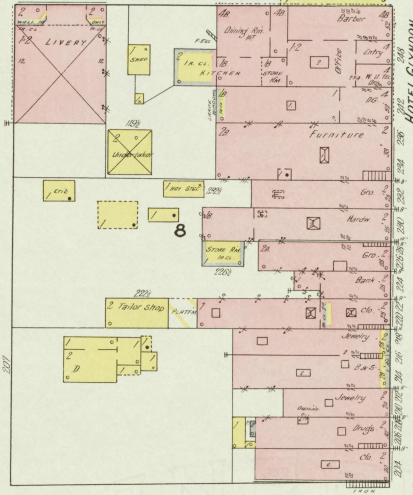
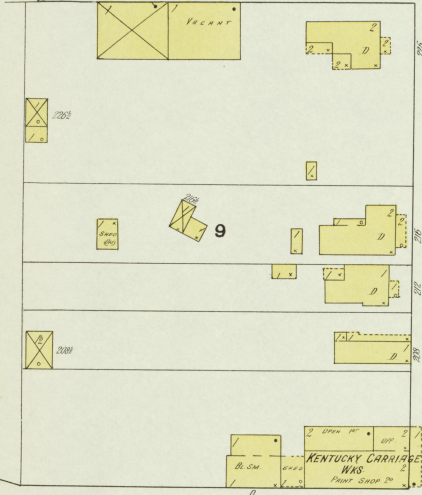


4



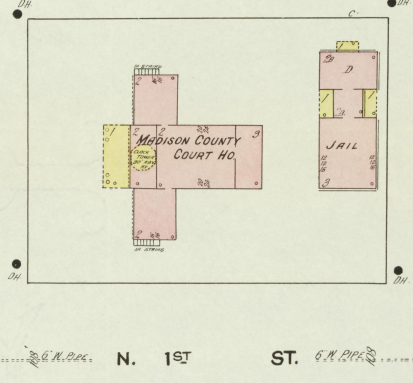
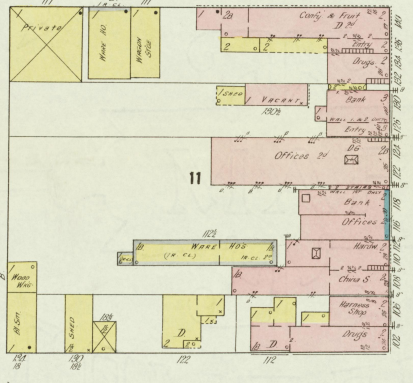
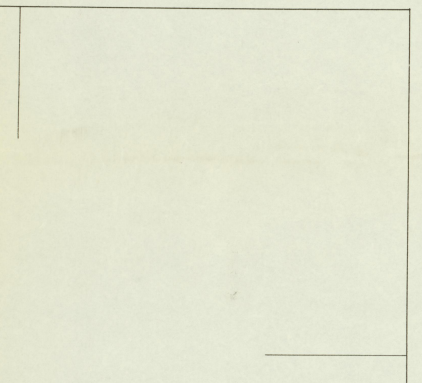
S. 3RD ST.

N. 3RD ST.



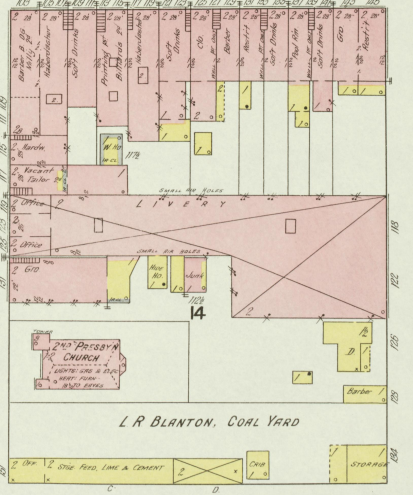
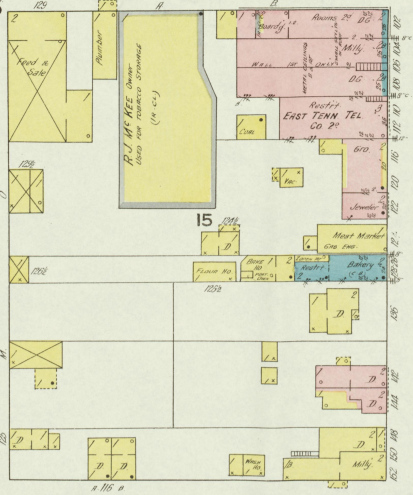
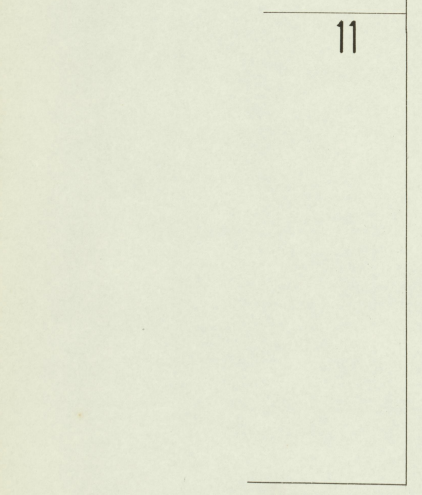
S. 2ND ST.

N. 2ND ST.



S. 1ST ST.

N. 1ST ST.



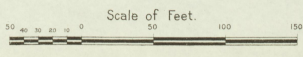
SOUTH B. ST.

NORTH B. ST.

E. WATER

E. MAIN

E. IRVINE



12

9

APR. 1912.
RICHMOND
Ky.

9



4

5

N. 3RD ST.

W. IRVINE

N. 2ND ST.

8

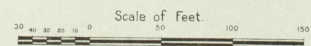
10

N. 1ST ST.

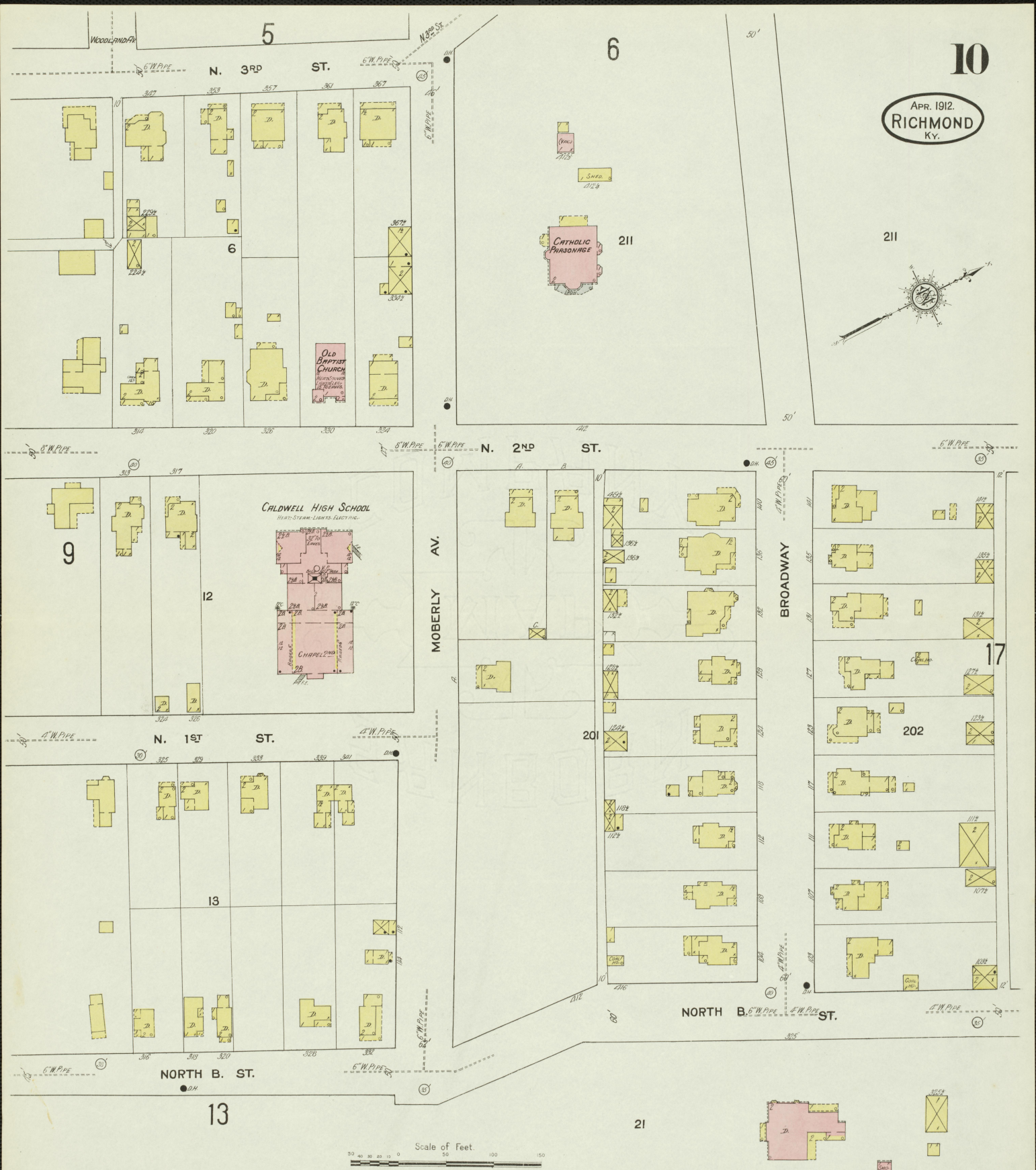
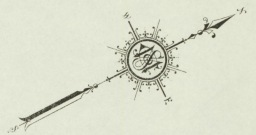
E. IRVINE

NORTH B. ST.

13



APR. 1912.
RICHMOND
KY.



Scale of Feet.
0 50 100 150

242

S. 2ND ST.

APR. 1912.
RICHMOND
Ky.

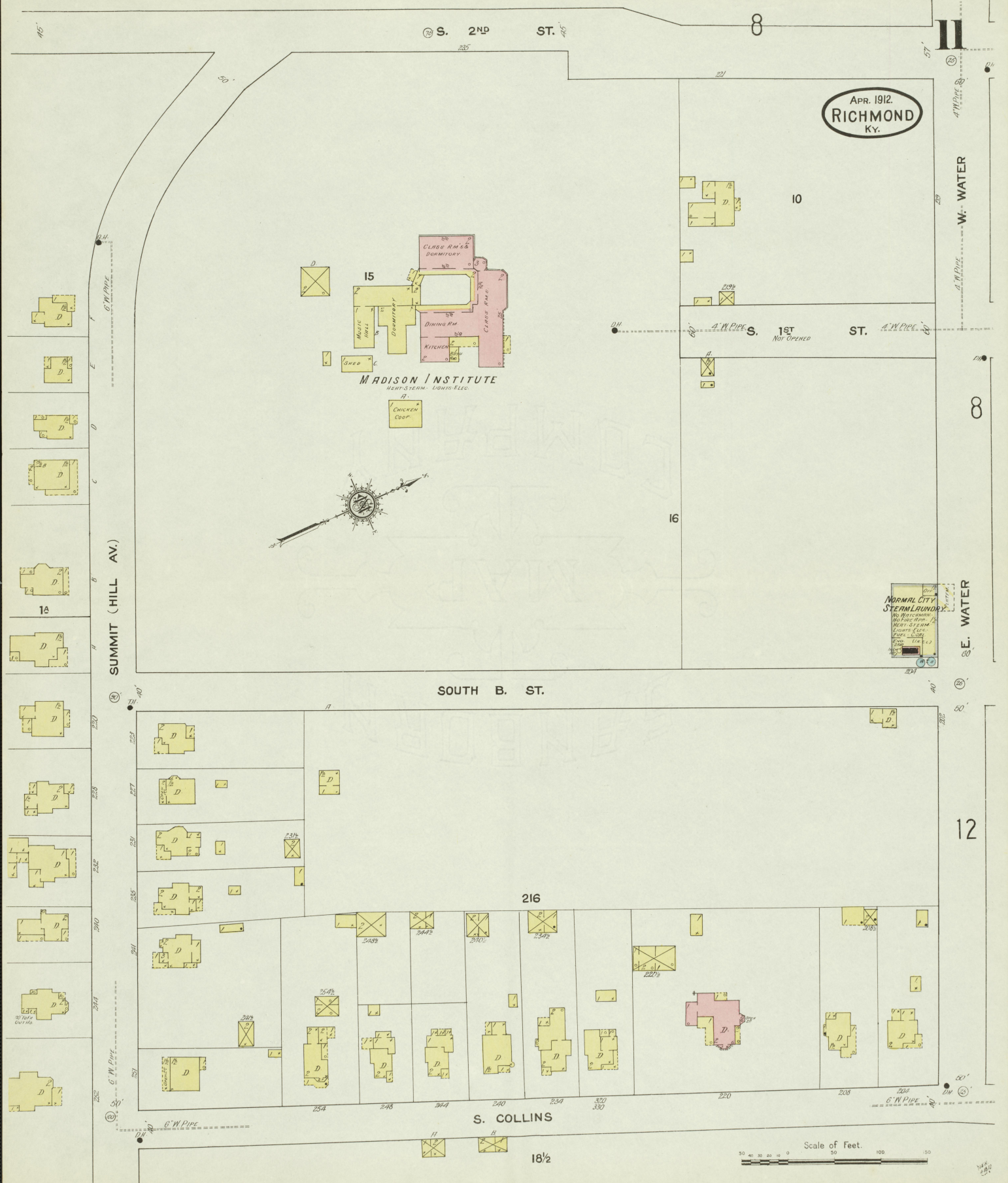
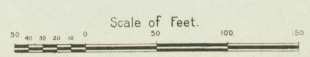
MADISON INSTITUTE
HEAT-STEAM-LIGHTS-TELE.



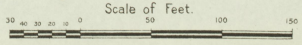
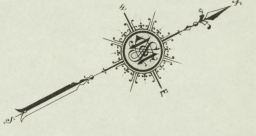
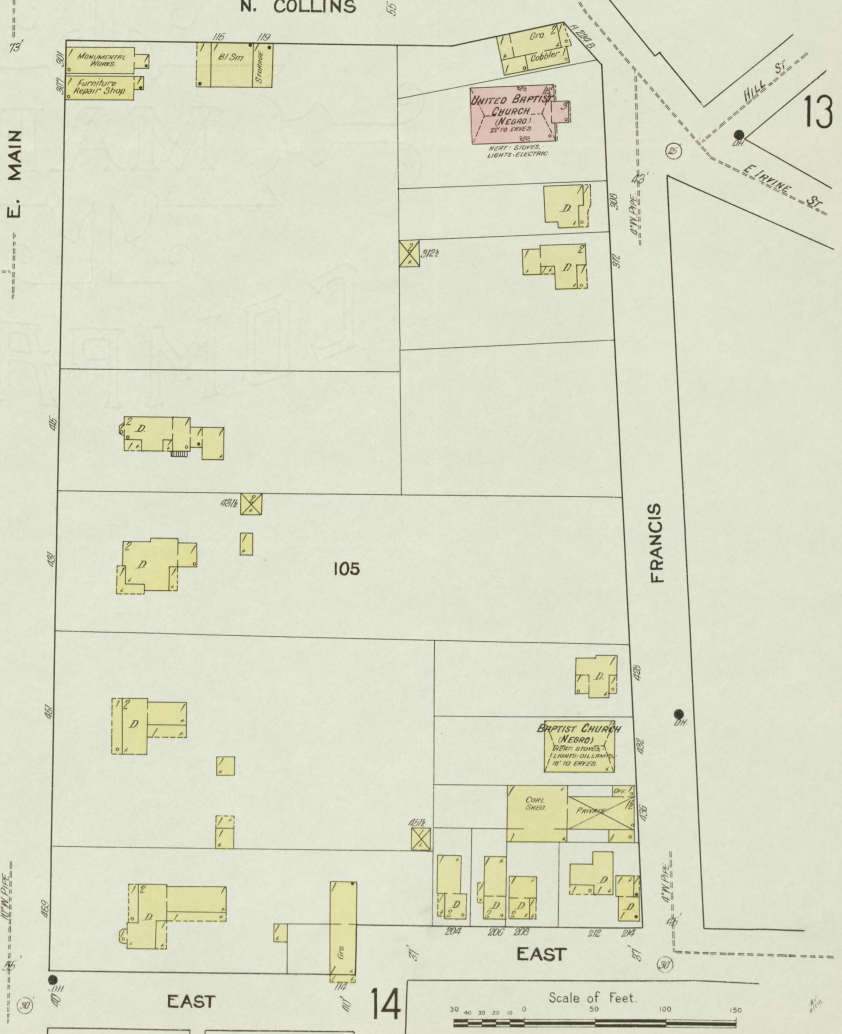
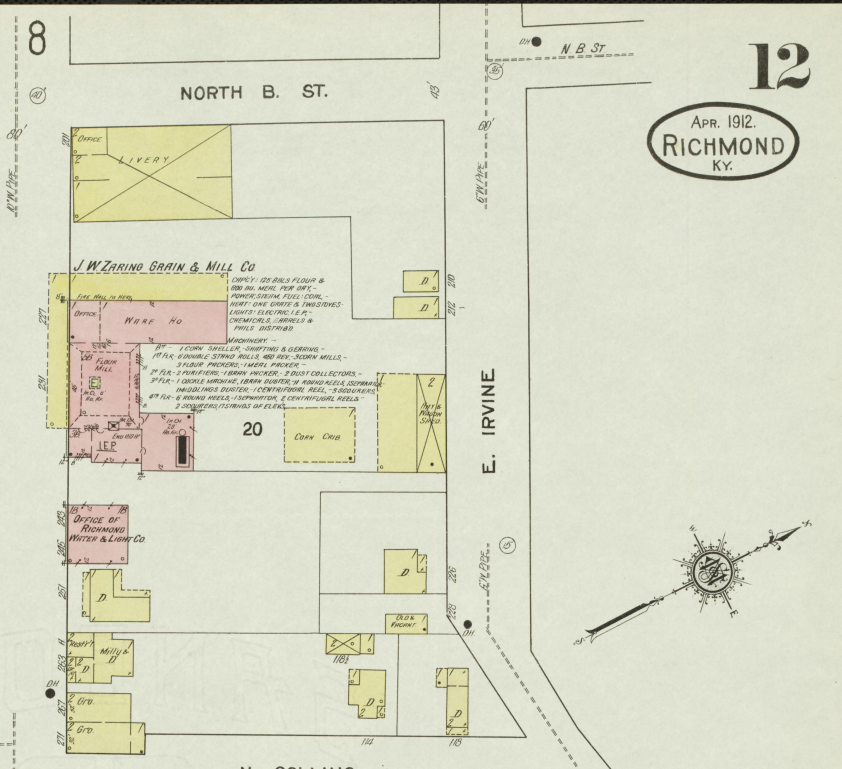
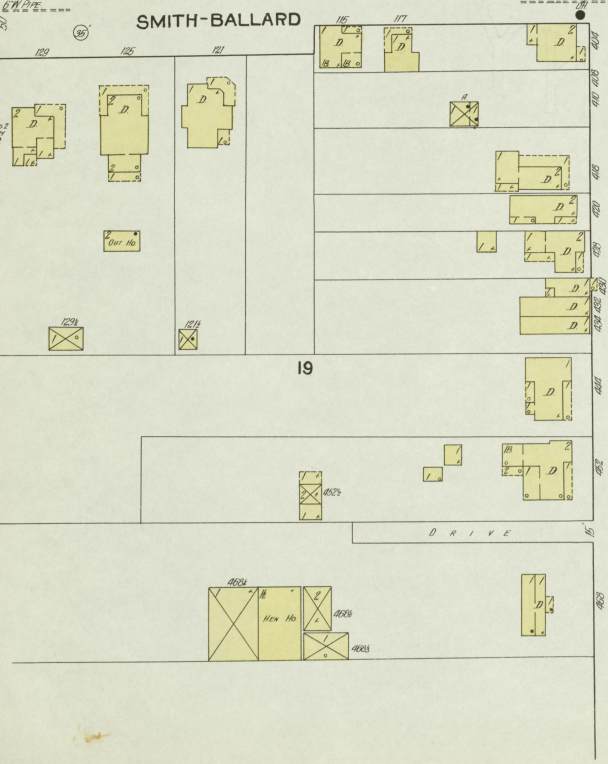
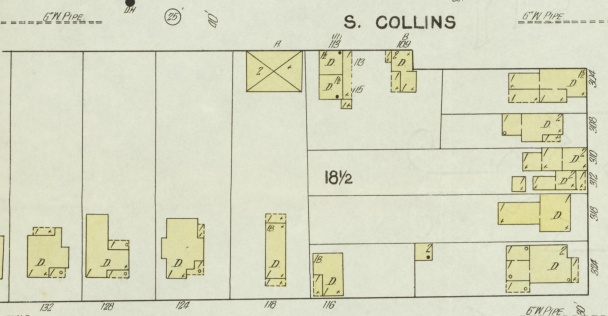
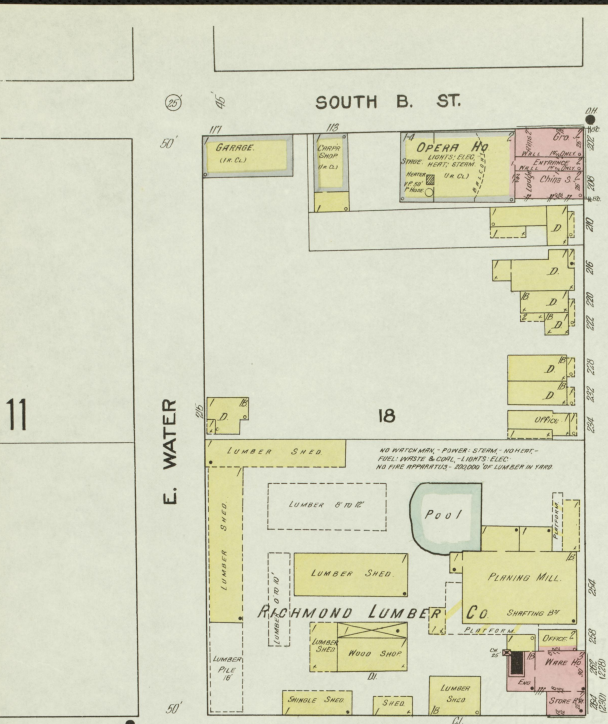
SUMMIT (HILL AV.)

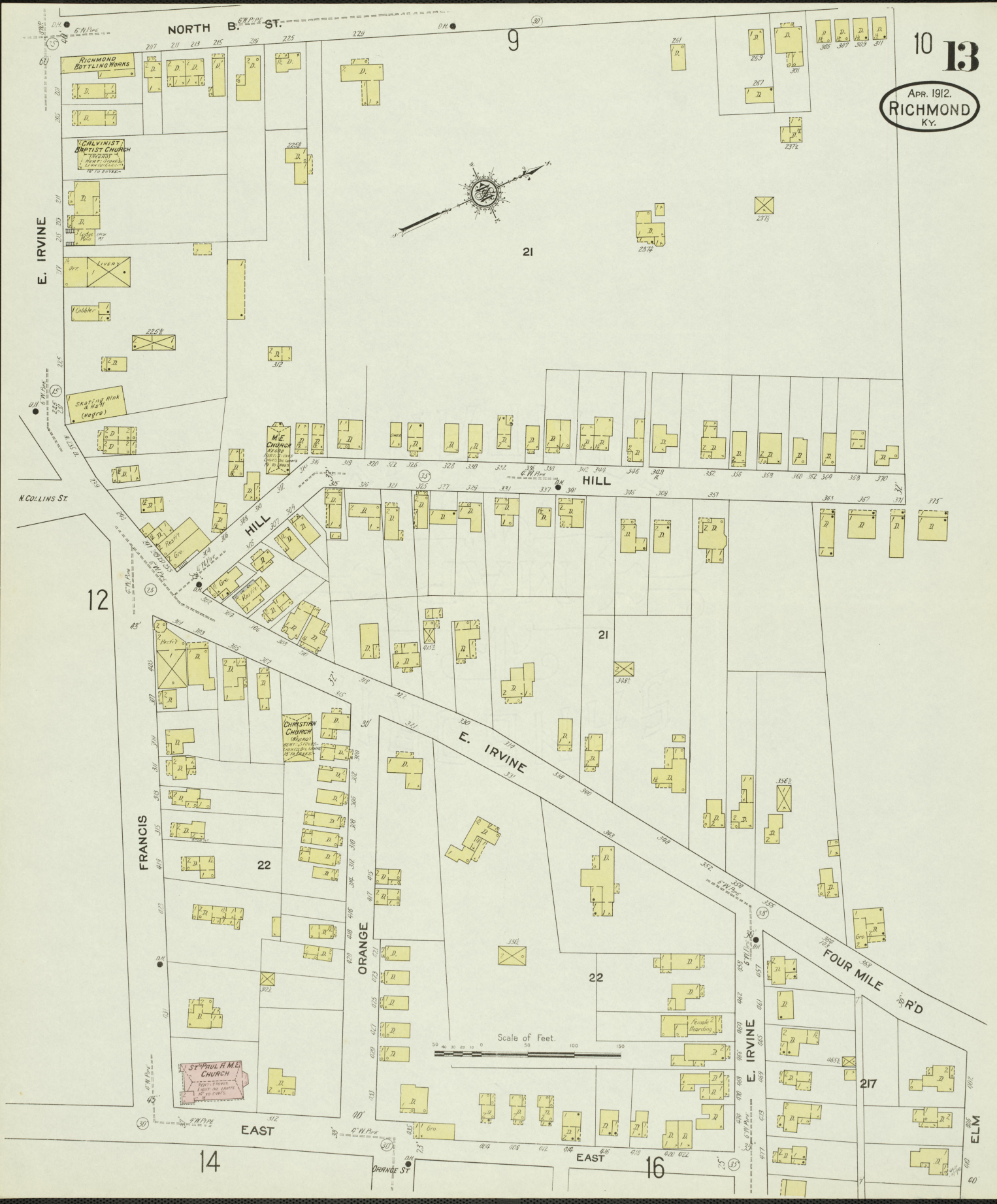
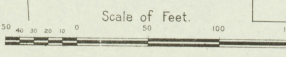
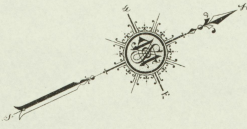
SOUTH B. ST.

S. COLLINS



11





NORTH B. ST.

9

21

E. IRVINE

N COLLINS ST.

HILL

12

HILL

21

E. IRVINE

FRANCIS

22

ORANGE

22

FOUR MILE RD

ST. PAUL M.E. CHURCH

EAST

14

EAST

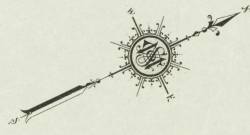
16

217

ELM

DRAINAGE ST.

APR. 1912.
RICHMOND
Ky.



14

15

L&N PASSENGER DEPOT
EXPRESS OFFICE

PLATFORM
L&N FREIGHT HO.
PLATFORM

L&N ENGINE HO.
TURN TABLE

30

LETCHEE AV.
4" W. PIPE

4" W. PIPE

4" W. PIPE

4" W. PIPE

4" W. PIPE

4" W. PIPE

4" W. PIPE

4" W. PIPE

4" W. PIPE

4" W. PIPE

4" W. PIPE

4" W. PIPE

4" W. PIPE

4" W. PIPE

4" W. PIPE

4" W. PIPE

4" W. PIPE

4" W. PIPE

4" W. PIPE

4" W. PIPE

4" W. PIPE

4" W. PIPE

4" W. PIPE

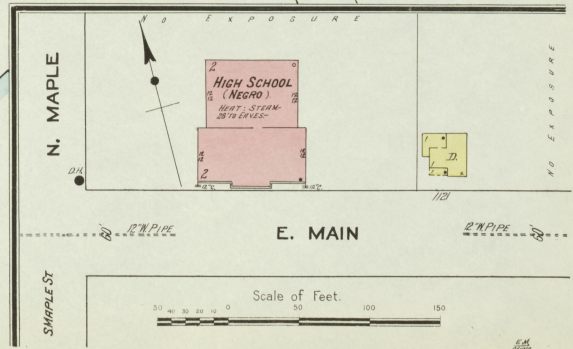


APR. 1912.
RICHMOND
KY.

WARD STAND
BALL PARK

HEATH
RICHMOND ICE CO.
PROFESSIONAL LIGHTS
ELECT. FUSING AND REPT.
ELEV. TRAVELING TOYS, ICE STORAGE
COMPRESSOR SYSTEM.

GRAIN W. HO.



Pond

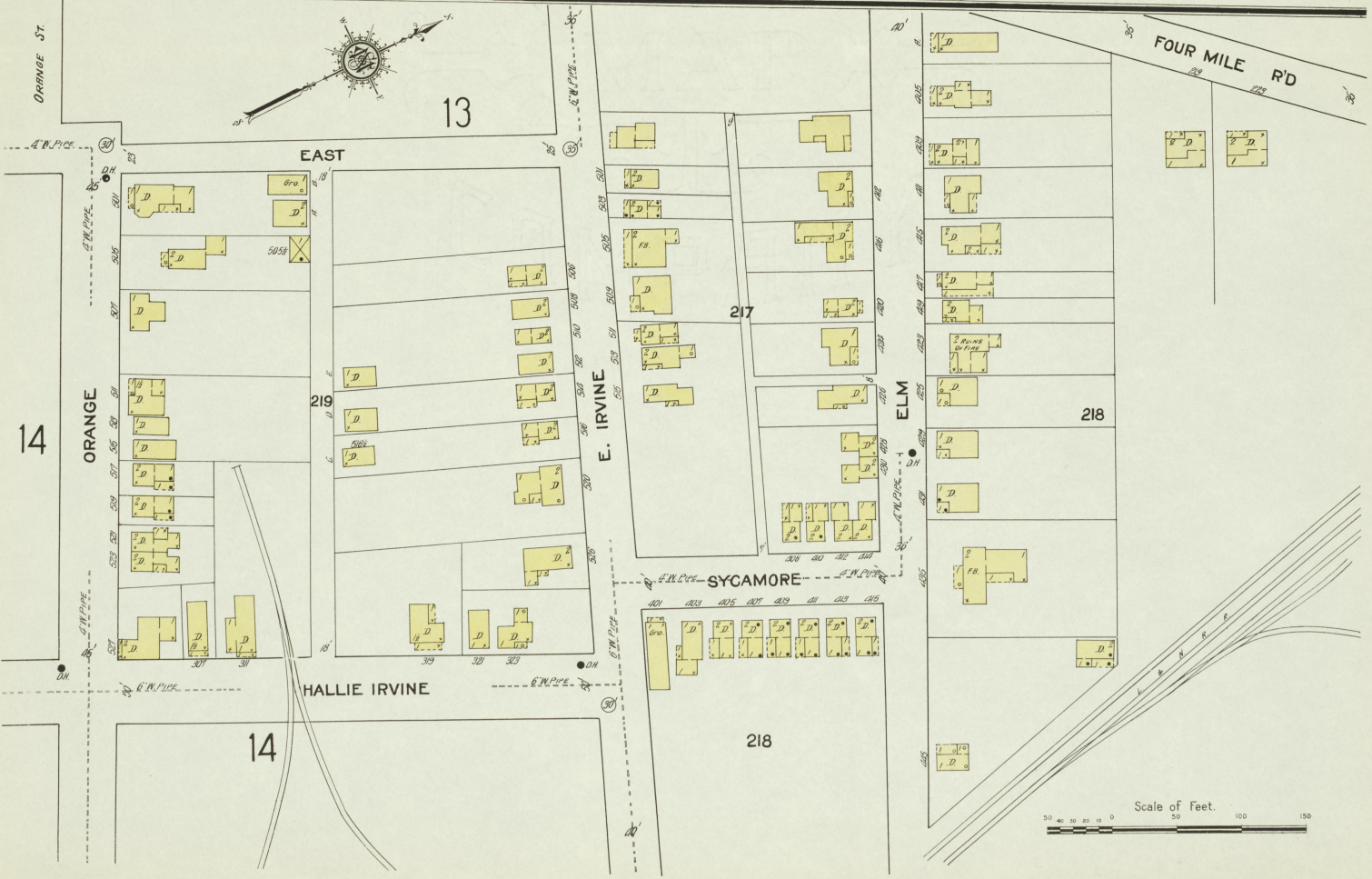
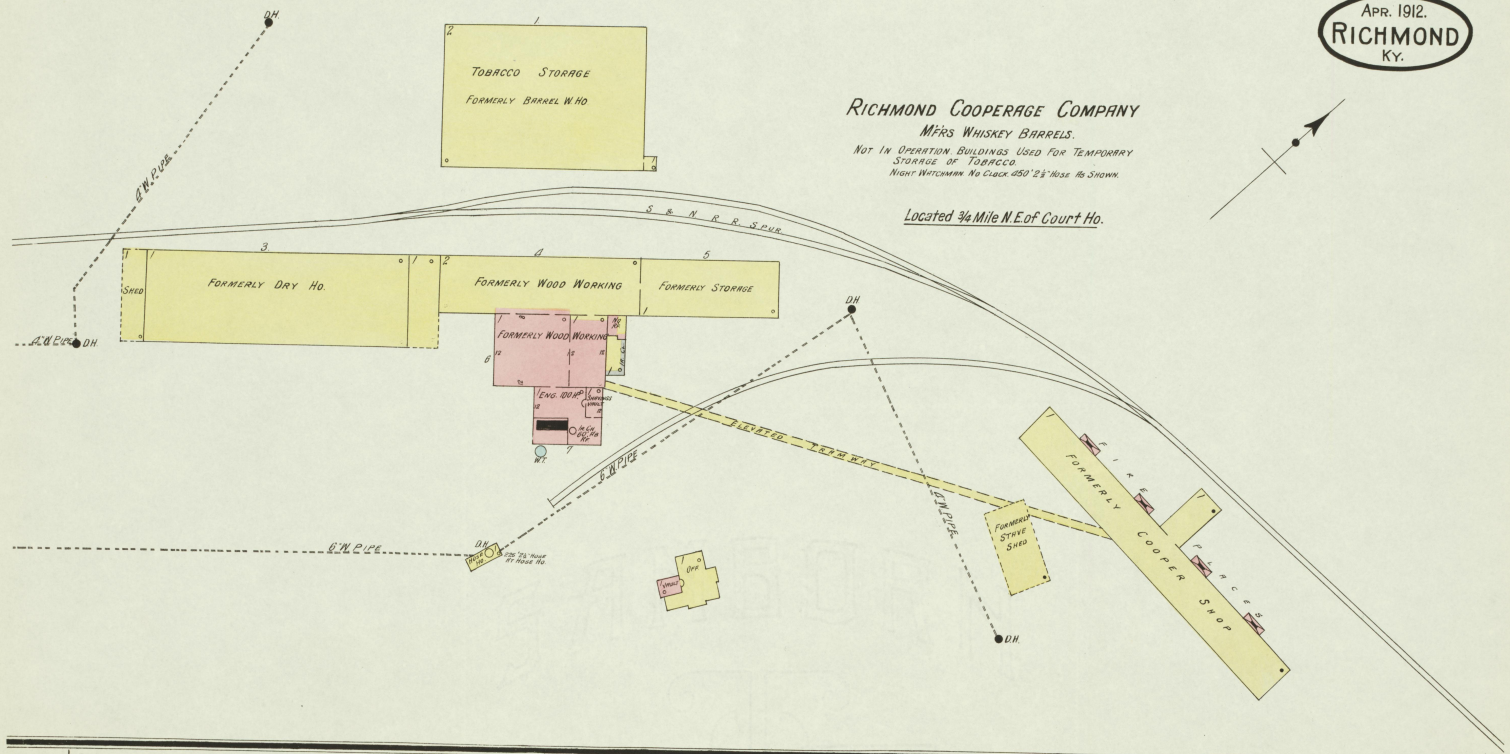
Scale of Feet.
0 50 100 150

APR. 1912.
RICHMOND
KY.

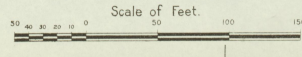
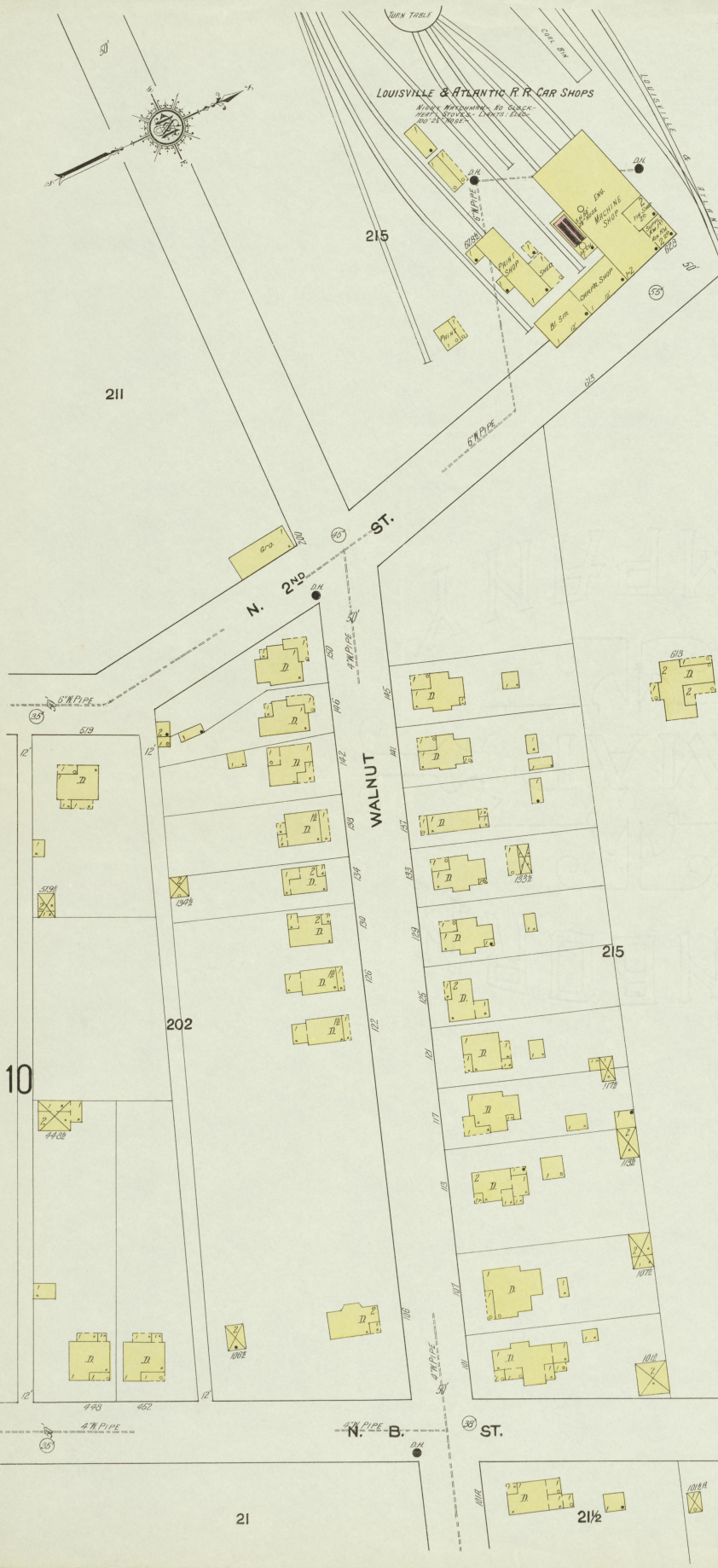
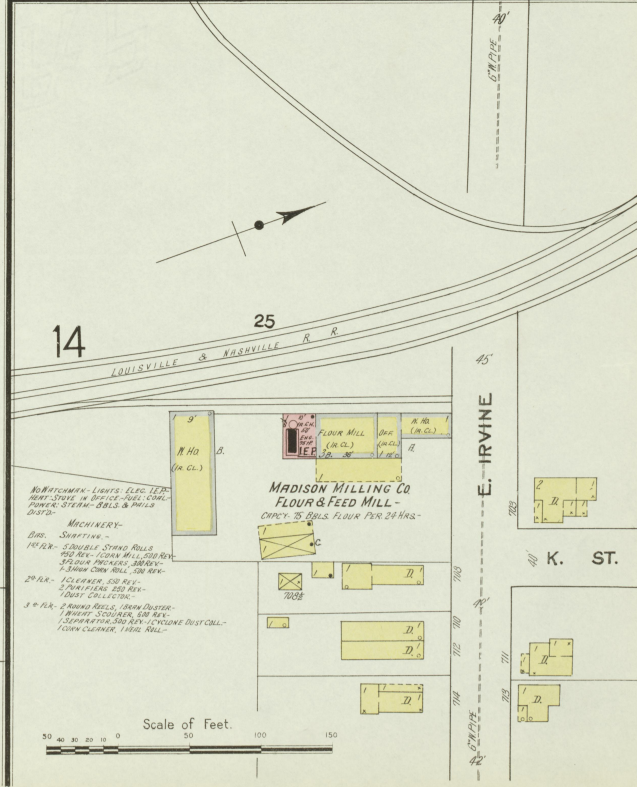
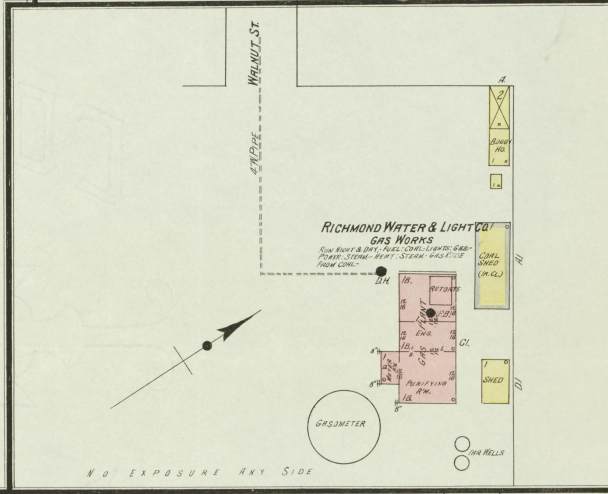
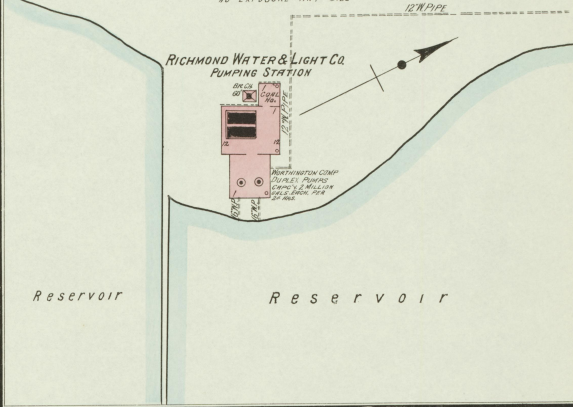
RICHMOND COOPERAGE COMPANY
MFRS WHISKEY BARRELS.

NOT IN OPERATION BUILDINGS USED FOR TEMPORARY STORAGE OF TOBACCO.
NIGHT WATCHMAN NO CLOCK 450' 2 1/2" HOSE AS SHOWN.

Located 3/4 Mile N.E. of Court Ho.



Located 2 1/2 Miles S. of Court Ho.
 NO EXPOSURE ANY SIDE



COLLEGE

S. SECOND ST.

APR. 1912
RICHMOND
KY.

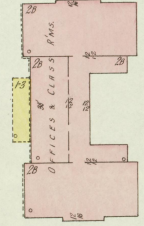
18

LANCASTER AV.

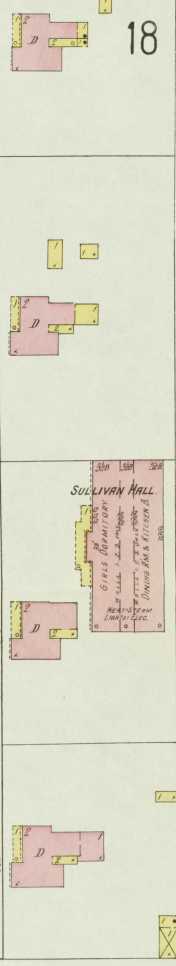


EASTERN KENTUCKY STATE NORMAL SCHOOL
ELEVATIONS UNIFORM.

RUBIC NEVEL ROARK BUILDING
SOUTH STAIRS - LIGHTS - ELECTRIC

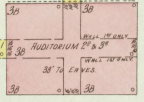


FACULTY ROW



SULLIVAN HALL

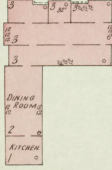
UNIVERSITY HALL
SOUTH STAIRS - LIGHTS - ELEC.



PREPARATORY SCHOOL

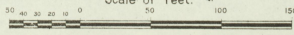


MEMORIAL HALL

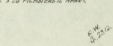


18

Scale of Feet.



POWER HQ. & MANUAL TRAINING



SILVER CREEK DISTILLERIES
Located 8 Miles S. of Richmond Court Ho.

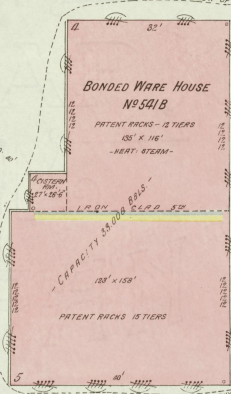
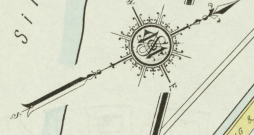
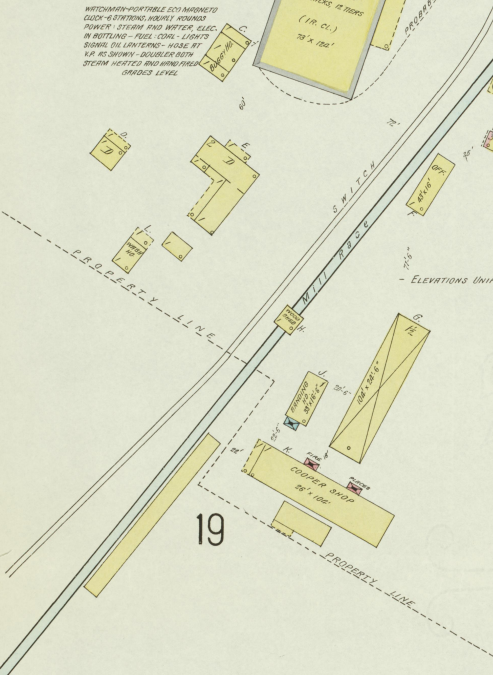
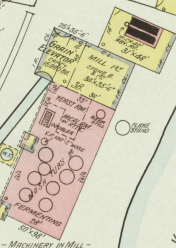
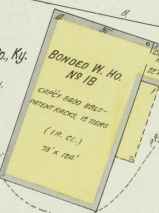
APR. 1912.
RICHMOND
KY.

LANCASTER PIKE

UNITED AMERICAN CO.
WARWICK DISTILLERY
Formerly BEHNMEYER Distilling Co.
Registered Distillery No. 1-8th Dist. Madison Co., Ky.

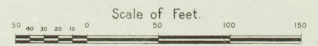
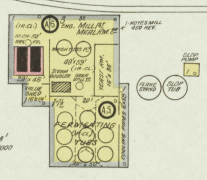
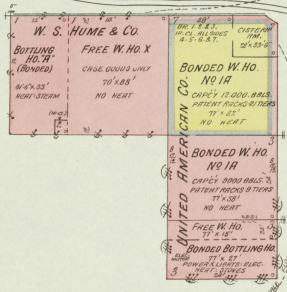
PRODUCT: BOURBON SOUR MASH WHISKY
MASH CAPACITY 350 Bu. PER DAY - YIELD 2,800 GALS. PER BU.
IN OPERATION FROM 5-7 MONTHS OF THE YEAR

WITHIN AND WITHOUT THE ECHMANNET
CLOSURE - 4-8 TONS. HEAVY JOISTING
POWER - STEAM AND WATER, ELEC.
IN BOTTLING - FUEL, COND. - LIGHTS
DRAINING TO LANDFILL - HOUSE BY
K.P. AS SHOWN - DOUBLER WITH
STEAM HEATED CONDENSERS
GRADES LEVEL



KENTUCKY DISTILLERIES & WARE HO. CO.
W.S. HOME & CO. ¹⁸⁹⁵ SILVER CREEK DISTILLERY
Registered Distillery No. 541
8th District, Madison Co., Ky.

PRODUCT: BOURBON SOUR MASH WHISKY
MASH CAPACITY 400 Bu. PER DAY - YIELD 4,500 GALS. PER BU.
IN OPERATION 6 MONTHS EACH YEAR
TIGHT WATERTIGHT AND CLOSURE - LIGHTS - LINTERS
POWER - STEAM - FUEL - COAL - STEAM HEAT IN WATER AND
HOTEL - SPONGE ON GRILLER ROOM & DISTILLERY
GRINDWELL DRY SYSTEM 3/8" HORDS SPACED 8" x 4"
ON 12" WHEELS - WATER DOUBLE FROM 250 TO 100 GALS. W.T.
108" DIA. - DOUBLER STEAM HEATED - GRADES LEVEL



Silver Creek