

JUNE 18-AUGUST 11

BULLETIN OF
The University of Kentucky

1951

Summer Session

LEXINGTON

43: 4, April

BOARD OF TRUSTEES

1951

Ex Officio Members

Lawrence W. Wetherby, Governor
Boswell B. Hodgkin, Superintendent of Public Instruction*
Harry F. Walters, Commissioner of Agriculture

From the State Board of Agriculture

George M. Cheek, Frankfort, 1951
Dr. W. M. Coffee, LaCenter, 1949
Carl Dempewolfe, Henderson, 1950

Members at Large

Paul M. Basham, Hardinsburg.....	1953
Mrs. Paul G. Blazer, Ashland.....	1950
John C. Everett, Maysville.....	1951
Harper Gatton, Madisonville.....	1953
R. P. Hobson, Louisville.....	1950
J. Woodford Howard, Prestonsburg.....	1951

Alumni Members

Herndon J. Evans, Pineville.....	1953
Guy Huguelet, Lexington.....	1951
H. D. Palmore, Frankfort.....	1950

Officers of the Board

Lawrence W. Wetherby, Chairman
Frank D. Peterson, Secretary and Treasurer

Executive Committee

Guy Huguelet, Chairman
John C. Everett
Harper Gatton
R. P. Hobson
H. D. Palmore

BULLETIN OF THE
University of Kentucky

LEXINGTON



Summer Session, 1951

June 18 to August 11

Published monthly, January to September inclusive, by the University of Kentucky, Lexington. Entered as Second-Class Matter at the Post Office, Lexington, Ky., under the Act of August 24, 1912.

Vol. 43

APRIL

No. 4

CONTENTS

	Pages
Calendar	3
Administrative Organization	4
Part I. General Information	5
The Summer Session for 1951	7
Accredited Relations	8
The Environment of the University	8
Student Union Building	9
Placement Service	10
Recreational Activities	11
The University School and Student Teaching	12
Length of Session	12
Admission	12
Numbering of Courses	15
Student Load	15
Fees	15
Refunds	15
Late Registration	15
Marking System	15
Room and Board	16
University Health Service	18
Requirements for Graduation	18
College of Arts and Sciences	19
College of Agriculture and Home Economics	22
College of Engineering	23
College of Law	24
College of Education	25
College of Commerce	27
College of Pharmacy	28
Graduate School	28
Part II. Schedule of Classes	31

CALENDAR FOR 1951 SUMMER SESSION

June 18	Monday, 7:45 a.m.— Classification tests and physical examinations for all new students
June 19	Tuesday, 8:00 a.m. to 4:30 p.m.— Registration and classification of all students, according to an alphabetical schedule
June 20	Wednesday — Class work begins
June 23	Saturday — Last date one may enter an organized class for the summer session
June 28	Thursday — Last date one may drop a course without a grade
June 29, 30	Friday and Saturday — Period for filing applications for degrees
July 4	Wednesday — Independence Day holiday
August 10	Friday — Summer Session Commencement
August 11	Saturday Noon — End of Summer Session

REGISTRATION SCHEDULE FOR 1951 SUMMER SESSION

June 18 — Monday, 7:45 a.m.— All new students, except those entering the Graduate School, will report to the Memorial Hall, for classification tests and physical examinations. These must be completed before registration.

June 19 — Tuesday, 8:00 a.m. to 4:30 p.m.— Registration and classification of all students, according to the following alphabetical schedule:

Tuesday Forenoon

8:00 to 8:50—Gi through Ka
9:00 to 9:50—Ke through Ni
10:00 to 10:50—No through Si
11:00 to 11:50—So through Z

Tuesday Afternoon

1:30 to 2:20—A through Cli
2:30 to 3:20—Clo through Ge
3:30 to 4:30—Miscellaneous
A through Z

June 20—Wednesday—Class work begins.

CONTENTS

	Pages
Calendar	3
Administrative Organization	4
Part I. General Information	5
The Summer Session for 1951	7
Accredited Relations	8
The Environment of the University	8
Student Union Building	9
Placement Service	10
Recreational Activities	11
The University School and Student Teaching	12
Length of Session	12
Admission	12
Numbering of Courses	15
Student Load	15
Fees	15
Refunds	15
Late Registration	15
Marking System	15
Room and Board	16
University Health Service	18
Requirements for Graduation	18
College of Arts and Sciences	19
College of Agriculture and Home Economics	22
College of Engineering	23
College of Law	24
College of Education	25
College of Commerce	27
College of Pharmacy	28
Graduate School	28
Part II. Schedule of Classes	31

CALENDAR FOR 1951 SUMMER SESSION

June 18	Monday, 7:45 a.m.— Classification tests and physical examinations for all new students
June 19	Tuesday, 8:00 a.m. to 4:30 p.m.— Registration and classification of all students, according to an alphabetical schedule
June 20	Wednesday — Class work begins
June 23	Saturday — Last date one may enter an organized class for the summer session
June 28	Thursday — Last date one may drop a course without a grade
June 29, 30	Friday and Saturday — Period for filing applications for degrees
July 4	Wednesday — Independence Day holiday
August 10	Friday — Summer Session Commencement
August 11	Saturday Noon — End of Summer Session

REGISTRATION SCHEDULE FOR 1951 SUMMER SESSION

June 18 — Monday, 7:45 a.m.— All new students, except those entering the Graduate School, will report to the Memorial Hall, for classification tests and physical examinations. These must be completed before registration.

June 19 — Tuesday, 8:00 a.m. to 4:30 p.m.— Registration and classification of all students, according to the following alphabetical schedule:

Tuesday Forenoon

8:00 to 8:50—Gi through Ka
9:00 to 9:50—Ke through Ni
10:00 to 10:50—No through Si
11:00 to 11:50—So through Z

Tuesday Afternoon

1:30 to 2:20—A through Cli
2:30 to 3:20—Clo through Ge
3:30 to 4:30—Miscellaneous
A through Z

June 20—Wednesday—Class work begins.

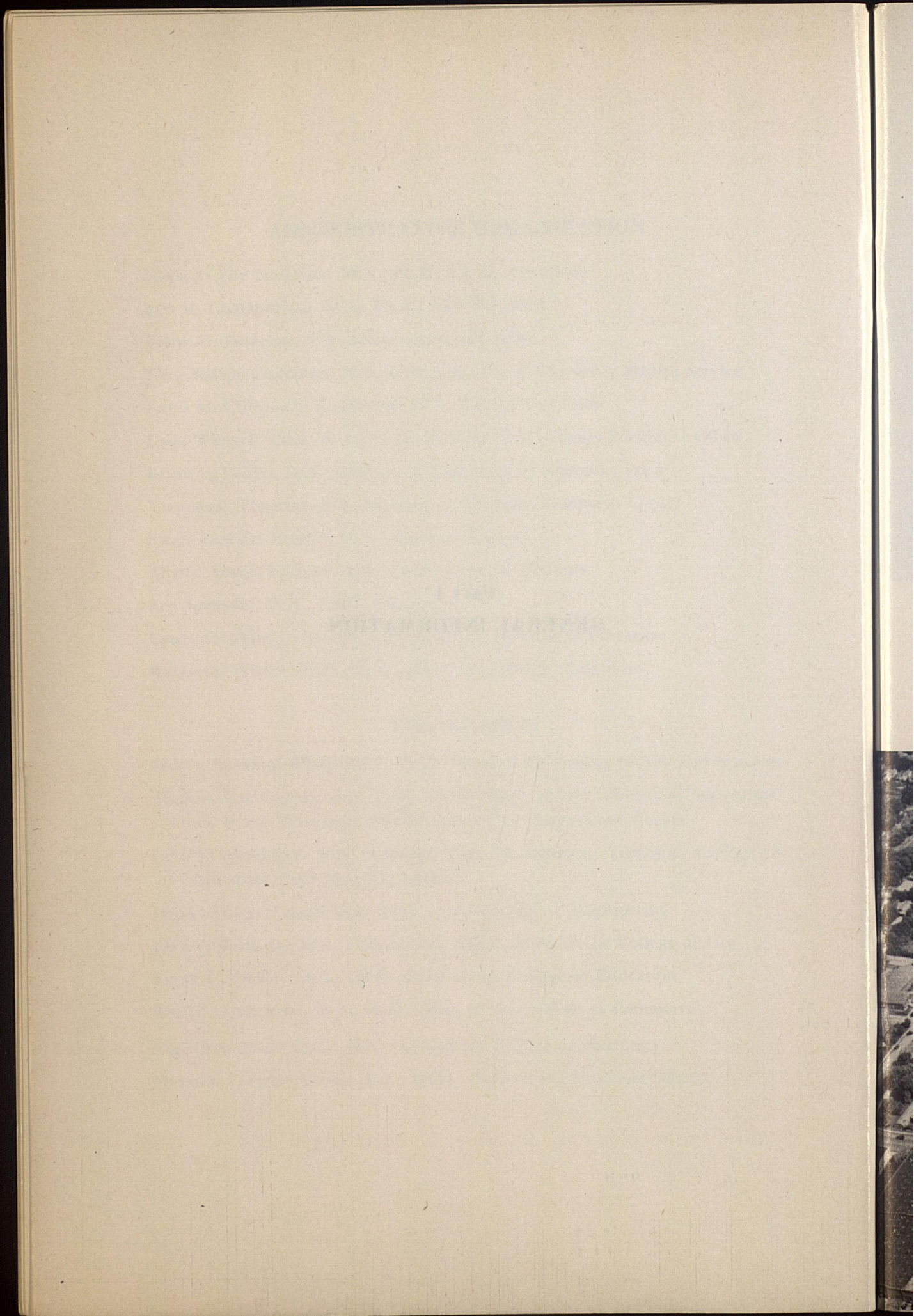
ADMINISTRATIVE ORGANIZATION

Herman Lee Donovan, M.A., Ph.D., LL.D., President
Leo M. Chamberlain, M.A., Ph.D., Vice President
Frank D. Peterson, A.B., University Comptroller
John Sharpe Chambers, M.S., M.D., Director of University Health Service
Louis M. Clifton, M.A., Director of University Extension
Lysle Warrick Croft, M.A., Ph.D., Director of University Personnel Office
Bruce F. Denbo, M.A., Director of University of Kentucky Press
Thomas L. Hankins, M.S., Director of Northern Extension Center
Sarah Bennett Holmes, M.A., Dean of Women
Albert Dennis Kirwan, M.A., Ph.D., Dean of Students
Lee Sprowles, M.A., Ed.D., Registrar
Lawrence Sidney Thompson, M.A., Ph.D., Director of Libraries
Raymond Wesley Wild, Ph.M., Director of Public Relations

THE COLLEGES

Martin Marshall White, M.A., Ph.D., Dean of the College of Arts and Sciences
Thomas Poe Cooper, B.S., D.Sc., LL.D., Dean of the College of Agriculture
and Home Economics and Director of the Experiment Station
Levi J. Horlacher, M.S., Assistant Dean in Resident Teaching, College of
Agriculture and Home Economics
Daniel Voiers Terrell, C.E., Dean of the College of Engineering
Elvis J. Stahr, Jr., M.A., A.B. in Jur., B.C.L., Dean of the College of Law
Frank G. Dickey, M.A., Ed.D., Dean of the College of Education
Cecil C. Carpenter, M.S., Ph.D., Dean of the College of Commerce
Earl Platt Slone, Ph.G., B.S., Dean of the College of Pharmacy
Herman Everette Spivey, M.A., Ph.D., Dean of the Graduate School

Part I
GENERAL INFORMATION



GENERAL INFORMATION

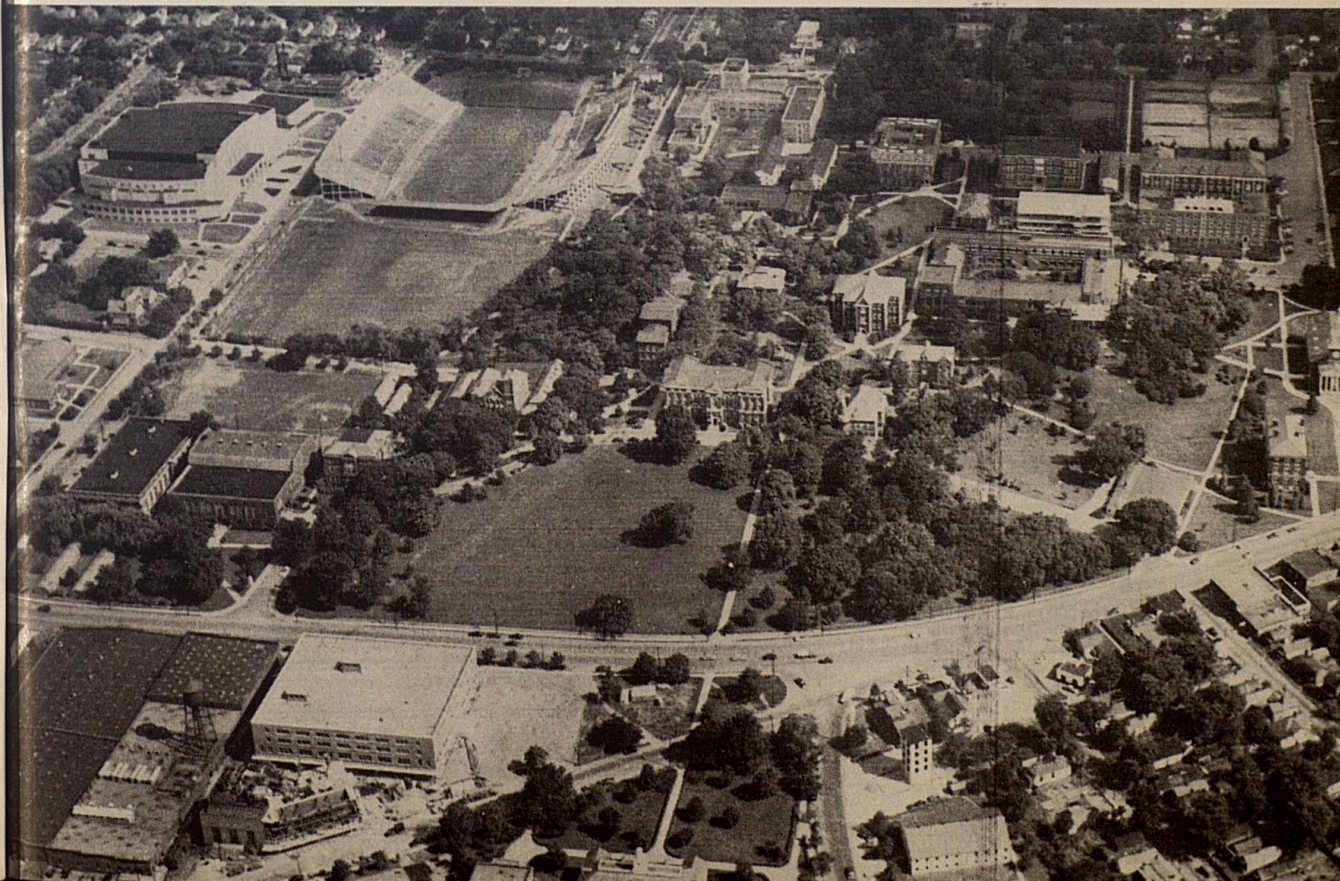
THE SUMMER SESSION FOR 1951

The course offering during the 1951 Summer Session will be almost as extensive and varied as during the regular school year. As indicated in a later section of this bulletin, courses will be offered for graduates and undergraduates in the College of Arts and Sciences, the College of Agriculture and Home Economics, the College of Engineering, the College of Law, the College of Education, and the College of Commerce.

In particular, the needs of the following groups have been kept in mind in planning the Summer Session program for 1951:

1. The high school boy or girl who graduates this spring and wishes to begin college work without delay.
2. The veteran who is eligible for educational benefits under Public Law 16 or 346. It will be desirable for the veteran recently discharged to begin his college studies at the earliest date possible. Those already enrolled will find it desirable to continue in school through the summer, in order that graduation may be achieved with the least loss of time.
3. Teachers, principals, supervisors, and superintendents who wish to further their preparation for educational work. The in-service edu-

AERIAL VIEW — This is how the U.K. campus looks from the air.



cation of teachers lagged greatly during the war, and it is expected that hundreds of teachers and other school officials will now wish to continue their summer studies.

4. All students, women and men, who are in college and wish to accelerate their programs of study.
5. Other persons who need certain courses to advance in their specific vocations, and to meet the requirements of the postwar economy.

Over and above its program of liberal education, the University Summer Session provides numerous opportunities for persons to prepare for specific occupations. The extent of the opportunities is indicated by the following vocational areas in which summer courses will be offered; Industrial Chemistry, Journalism, Medical Technology, Pre-Medicine, Pre-Dentistry, Pre-Nursing, Music, Library Science, Public Service, Art, Bacteriology, Geography, Geology, Psychology, Radio Arts, Social Work, Sociology, Agriculture in its various phases, Pre-Forestry, Pre-Veterinary, Home Economics, Architectural Engineering, Aeronautical Engineering, Civil Engineering, Communications Engineering, Electrical Engineering, Mechanical Engineering, Metallurgical Engineering, Mining Engineering, Law, Elementary Teaching, High School Teaching, Educational Supervision and Administration, General Business, Commerce-Law, Industrial Administration, and Secretarial Work.

ACCREDITED RELATIONS

The University of Kentucky is a member of the Southern Association of Colleges and Secondary Schools and the Kentucky Association of Colleges and Secondary Schools. It is accredited in its respective colleges or departments by the Association of American Law Schools, the American Association of Collegiate Schools of Business, the American Association of Schools and Departments of Journalism, the American Library Association, the National Association of Schools of Music, the Engineer's Council for Professional Development, the American Chemical Society, the National Association of Schools of Social Administration, the American Council on Pharmaceutical Education, the American Association of Colleges of Pharmacy, the American Association of Colleges for Teacher Education, and the National University Extension Association.

THE ENVIRONMENT OF THE UNIVERSITY

The University of Kentucky is located in Lexington in the center of the Bluegrass, a delightful country of scenic beauty and of great historical interest.

Many of the famous horse farms, some individual establishments containing more than a thousand acres, are open to visitors throughout the year. These farms, with their broad pastures, sparkling streams, woodlands, and paved roads provide Fayette County with a system of parks which is unique. Elmendorf; Walnut Hall; Calumet, home of Citation; Castleton; Hamburg Place; Dixiana; and Coldstream, are among the beautiful horse farms in Fayette County open to visitors.



SUMMERTIME — A campus scene between classes.

Points of particular interest in Lexington, other than the nearby farms, are Ashland, the home of Henry Clay; General John Hunt Morgan's home; the home of Mary Todd, wife of Lincoln; the vast tobacco warehouses; the Keeneland Race Track; the track of the Kentucky Trotting Horse Breeder's Association; the United States Veterans' Hospital; and the U. S. Public Health Service Hospital.

Within a relatively short distance from Lexington are Frankfort, the Capital City, with its many historical features; Herrington Lake; Shakertown; Fort Harrod and its adjacent Pioneer Cemetery; the Old Kentucky Home; the Palisades of the Kentucky River; and many other points of historical and scenic interest.

STUDENT UNION BUILDING

The Union Building is the center of student activity on the campus. Various rooms are available for the enjoyment of students during leisure hours. One may meet friends or read leading magazines and newspapers in the Great Hall; engage in billiards or pingpong in the Game Room; play cards, checkers, or chess in the Social Room; and hear the works of great composers in the Music Room.

For the convenience of students, the building maintains an information desk, telegraph and telephone service, a modern barber shop, a cafeteria serving foods of quality, an attractive soda grill, conference rooms and comfortable lounges.

The Student Union Board is eager for all University students to take advantage of the services and facilities of the building.

PLACEMENT SERVICE

There is a constantly growing demand for the services of the graduates of the University of Kentucky. Placement services are maintained by several colleges on the campus and every attempt is made to procure for the students and for the graduates of the University the type of employment which will enable each one to achieve the best results.

In the College of Commerce is the Senior-Commerce Employment Association which is self-supporting and is headed by a permanent secretary. The Association has been very successful in placing graduates with nationally operating industrial concerns, credit investigating and reporting companies, wholesale houses, banks, insurance companies, chain store companies, governmental agencies both federal and state, and in teaching positions. These positions included secretarial work, accounting, advertising, selling, personnel, and statistical work.

The Teacher Placement Bureau of the College of Education is designed to assist in the placement of superintendents, principals, and teachers. Each student in attendance at the University who desires a teaching position should

BEFORE THE BELL — Relaxing in the Student Union Grill.



FUN FOR ALL — One of the many recreational facilities available to U.K. students is the swimming pool in Memorial Coliseum.



register with the Placement Bureau, Room 115, Education Building. Superintendents and college administrators who desire capable teachers should write directly to the bureau for recommendations and credentials.

The long list of successful Alumni of the College of Engineering is indicative of its reputation for educating men for careers in the engineering and industrial world. Its graduates are continually in demand and contact between industries and the College is maintained through an Employment Placement Service. This service is considered as part of the College's obligation to its students and every effort is made to give each graduate the opportunity for a position of his preference.

RECREATIONAL ACTIVITIES

The summer months are vacation and recreation time. Provision is made for Summer Session students to participate in numerous recreational activities and to learn the fundamental skills and techniques involved. The Physical Education Department is offering recreational courses for men and women students in archery, badminton, tennis, social and folk dancing, volley ball, bowling, swimming, camping, and intramural sports. This is an opportunity for every summer session student to receive expert instruction in any or all of the above mentioned activities. If you are a novice it is your chance to learn; if an expert performer, it is your chance to participate under wholesome and enjoyable circumstances.

The primary purpose of the recreational courses is to provide pleasant and profitable leisure time activity for all students and to improve their performance ability. Teachers and supervisors of physical education and classroom teachers will find the courses valuable in organizing teaching material and methods. Recreational leaders and directors will get new ideas on promoting leisure time activities.

During the summer, many features will be added. The weekly movies will be continued. Musical programs, faculty recitals, lectures, summer opera in Cincinnati and Louisville, Blue Grass tours, picnics, dances, receptions, and teas are examples of some of the extracurricular offerings.

In addition to the overall program, departmental programs are many and varied. For instance, both the music and dramatic departments conduct programs for summer school students. All Summer School students will find these activities profitable and enjoyable. The fourth annual Family Life Institute will be held June 26-28, with headquarters at Memorial Hall. The Institute will be open to students and other interested citizens. Programs may be obtained from the Department of University Extension.

THE UNIVERSITY SCHOOL AND STUDENT TEACHING

The University Elementary School will be in session from Monday, June 11, through Friday, July 27. Classes in the school will meet five days a week from 8:00 to 12:00 o'clock. No tuition is charged for the summer session. Summer school students who have children of elementary school age have an opportunity to place them in the University School. The Elementary School maintains a modern program of education that should be of interest to parents attending the University of Kentucky summer session. Persons desiring to avail themselves of the opportunities of the University School should write the Director requesting reservations for their children.

Students desiring to register for student teaching should make application on or before May 31, to Professor Lyman Ginger, Director of the University School. Students are urged to file their applications for this course as early as possible as time should be allowed to check the prerequisites before registration.

Student teaching during the summer session will be limited to persons who have had previous teaching experience. Student teaching at the secondary level will be provided through the facilities of public schools within the area of the University.

LENGTH OF SESSION

The Summer Session of the University of Kentucky for 1951 will be eight weeks in length, six days a week. The session will open June 18 and close August 11. Classes during the Summer Session will begin at 7:00 a.m.

ADMISSION

Students will be admitted to the University as their previous education warrants. They will be admitted to the freshman class, to advanced standing, as special students, as graduate students, or as auditors.

Applicants for admission should write the Registrar's Office for forms on which to submit their applications, stating at the time whether they wish forms for admission to the freshman class, to advanced standing, or to the Graduate School. **Applications and transcripts of credit should be filed in advance.** Students entering with advanced standing and those entering the Graduate School should present transcripts from each institution they have attended.

To the Freshman Class. Applicants who are graduates of accredited high schools will be admitted to the University on certificate, provided they have at least fifteen units of acceptable high school work. A unit represents the study of any subject for a school year of at least thirty-two weeks, with five recitation periods a week, each of at least forty-five minutes in length, or the equivalent thereof. Double periods are required in shop, drawing, typewriting, and all other courses which demand no out-of-class preparation. One unit is the minimum credit accepted in any foreign language, and one-half unit the minimum in any other subject.

While the University does not prescribe a pattern of work for admission, it recommends that at least ten of the units presented be chosen from English, the social studies, mathematics, the foreign languages, and the laboratory sciences, and that within these ten units the student offer at least three units in English, one and one-half in algebra, and one in plane geometry. Should a student lack these courses as prerequisites for any of his college work, he will be required to take them in college without credit.

Applicants who have graduated from unaccredited high schools and those not graduated from high school may be admitted as freshmen, if, in addition to presenting the fifteen acceptable units, they successfully pass the University classification examinations.

Admission to the University does not necessarily qualify a student for admission to a particular college. In every case the student must meet the admission requirements of the college in which he is to enroll.

To Advanced Standing. A student who applies for admission with advanced standing is expected to present evidence that he is in good standing in every respect in the institution last attended, and in general is required to have maintained a standing of 1.0 in all previous college work. The University does not disregard at any time or under any conditions college or university records in order to admit applicants solely on the basis of their high school records.

As a Special Student. A graduate of another university or college may enter the University as a special student. Other persons may be admitted as special students provided they are fully prepared to do the work desired and provided they are at least twenty-one years of age.

As an Auditor. By payment of the required fees any person may be admitted to a class or classes as an auditor. A student regularly enrolled in any college must apply to the Dean of the college in which he is registered in order to be an auditor. Other persons should apply to the Registrar's Office for admission. No credit can be given for a class audited, nor is the student permitted an examination for credit.

College of Arts and Sciences. Admission to this college is governed by the general admission requirements of the University outlined on the preceding pages.

College of Agriculture and Home Economics. Admission to this College is governed by the general admission requirements of the University outlined on the preceding pages.

College of Engineering. In addition to meeting the general requirements for admission to the University, the applicant for admission to the freshman class of the College of Engineering shall include in high school credits one unit of plane geometry and one and one-half units of algebra. It is recommended that the student offer one-half unit in solid geometry; otherwise this subject will be added to the requirements of the freshman year.

Students whose scores on the University classification tests are in the lower one-fourth, or those lacking in the requirements for algebra, may enter the College of Engineering. The schedules of such students will be adjusted in accordance with their placement tests, as directed by a special orientation committee of the College of Engineering and the Personnel Office.

College of Law. An applicant for admission to the College of Law must offer 60 credits completed in residence in colleges other than Law, six of which must be in English and not more than six of which may be in Physical Education, Military Science, and other non-theory courses. A standing of 1.3 is the minimum qualitative requirement. While there is no prescribed pre-law curriculum, the applicant's record is evaluated in terms of its relationship to the study of law, and in terms of the requirements of the Association of American Law Schools.

Effective in 1950-1951 and thereafter, beginning Law students will not be admitted to the College of Law in the second semester or the summer session, except that students who have completed all work for the Bachelor of Arts or equivalent degree, or have completed the first three years of a combined degree program, may be admitted to the College of Law in the second semester.

College of Education. In addition to meeting the general admission requirements of the University, outlined on the preceding pages, the applicant for admission to the freshman class of the College of Education must rank in the upper three-fourths on the University classification tests. In order to transfer to the College of Education from another institution or from another college of the University, a student must have a standing of 1.0 or higher.

College of Commerce. In addition to meeting the general admission requirements of the University, outlined on the preceding pages, the applicant for admission to the freshman class of the College of Commerce must rank in the upper three-fourths on the University classification tests.

College of Pharmacy. Admission to this college is governed by the general admission requirements of the University outlined on the preceding pages.

The Graduate School. A graduate of a fully accredited institution of higher learning may be admitted to the Graduate School upon evidence of graduation and an official transcript of undergraduate courses. However, such admission does not obligate the University to accept all credit granted by the undergraduate school. When full credit is not granted, the student will be required to do more than the normal amount of work to complete a graduate degree. Applications from graduates of institutions not fully accredited will be individually evaluated.

NUMBERING OF COURSES

Courses numbered 1 to 99 inclusive, may be taken for credit only by undergraduate students. Courses numbered 100 to 199, inclusive, may be taken for credit by juniors, seniors, and graduate students, provided that a course so numbered may carry graduate credit only with the approval of the student's graduate committee. Courses numbered 200 or above are open only to graduate students.

STUDENT LOAD

The normal load for the summer session is 9 semester hours. Graduate students may earn nine weeks of residence.

FEES

For the summer session the full-time fee for all Kentucky students, except those enrolled in the Law School, will be \$30.00 and for students in the Law College the fee will be \$31.50. For out-of-state students, in all colleges except law, who entered before September 1, 1947, the fee will be \$45.00, and for those entering after September 1, 1947, the fee will be \$60.00. The fee for out-of-state students in the Law College will be \$46.50 and \$63.00 respectively.

Part-time students will pay according to the number of semester hours carried, except that the full-time fee will be paid in all cases when the student load for the session equals or exceeds six semester hours.

Auditors are charged the same fee that they would pay for credit.

For special fees see the University Catalog.

REFUNDS

During the first week after the opening of the Summer Session, students withdrawing from the University may receive a refund on the amount paid in fees, not to exceed 70 per cent of all fees paid. During the second week a refund of 50 per cent may be secured, and during the third week a refund of 30 per cent. In no case shall the amount refunded exceed 70 per cent and in no case will refunds be made after the first three weeks.

A refund will not be granted unless the student makes his withdrawal official in the Registrar's Office.

LATE REGISTRATION

No student will be allowed to register for credit after June 23.

Students entering the University after the regular registration periods will be charged an additional fee of \$3.00 for the first day, \$4.00 for the second day, and \$5.00 for any day thereafter. No exceptions to this charge will be granted.

MARKING SYSTEM

Results of work will be recorded in the Registrar's Office as follows:

A—Exceptionally high quality, valued at 3 points for each credit.

B—Good, valued at 2 points for each credit.

C—Fair, valued at 1 point for each credit.

D—Unsatisfactory, indicates a deficiency and gives no points, but gives credit for graduation if with such credit the student's standing is 1 or more.

E—Failure, valued at no points and no credits.

I—Incomplete.

X—Absent from examination.

WP—Withdrew passing.

WF—Withdrew failing.

The standing of a student is defined as the ratio of his total number of points to his total number of credits. When a semester's work is to be considered a standing is understood to be the ratio of the number of points gained to the number of credits scheduled.

ROOM AND BOARD

Application for a room in the Women's Residence Halls should be made to the Dean of Women, and for a room in the Men's Residence Halls to the Dean of Men. Each application should be accompanied by a reservation fee of \$10.00. If a check is sent in payment of this fee it should be made payable to the University of Kentucky. **Refunds of this fee will be made only in case notification of cancellation is given the Dean of Women or the Dean of Men at least thirty days before the session opens for which the reservation is made.** Upon occupancy of the room by the student, this fee will be held as a damage deposit to be returned at the close of the session.

Women's Residence Halls. As the housing shortage has seriously limited the number of available rooms in Lexington, prospective students should make reservations for the Residence Halls or Sorority Houses as early as possible. The three large halls and as many of the smaller units as needed will remain open. Meals will be served in the central dining unit of the Residence Halls. The cost of room and board is \$100 per summer session.* Bed linens are furnished but students should bring blankets and towels. An application blank for reserving a room in the Residence Halls should be secured from the office of the Dean of Women but a reservation will not be made until the completed application is returned accompanied by the \$10 deposit. Admission to the University by the Registrar's Office does not constitute a reservation in the Residence Halls. All room assignments are made in the order of receipt of the completed application. In order to hold a room beyond the regular registration dates, special arrangements for late arrival should be made with the Dean of Women.

* The University reserves the right to change this figure in view of constantly rising living costs.



HOMELIKE — One of the comfortable rooms for U.K. girls.

Men's Residence Halls. The University maintains four permanent Men's Residence Halls which are available to both undergraduate and graduate students during the summer term. Prices of rooms in these halls for the summer term range between \$22.50 and \$34.50.

The University also maintains temporary halls for men students. These are office-type barracks which were erected at the end of the war by the Federal Housing Administration. Rent for the session per person ranges between \$22.50 and \$25.00

To secure a room in either type hall the student should make application directly to the office of the Dean of Men.

For married students who desire to bring their families to Lexington, and for students who would prefer to live in private homes, the office of the Dean of Men has available a list of establishments in the city. The number of family units is both limited and costly. Students are urged not to bring their families to Lexington without first securing living quarters.

University Cafeteria. Meals will be served at the University Cafeteria during the Summer Session.

Rooms and Board in Lexington. All prospective University of Kentucky students should make arrangements for living quarters before coming to

Lexington. For information relative to available rooms the student should apply to the Office of the Dean of Women, or Dean of Men. The housing shortage has seriously limited the number of available rooms in the city.

UNIVERSITY HEALTH SERVICE

The services of physicians and nurses and complete infirmary facilities will be available to the students registered in the Summer Session.

REQUIREMENTS FOR GRADUATION

Undergraduate Colleges. To be eligible for graduation from any undergraduate college of the University, a student must have completed the requirements of the curriculum as approved by the University Faculty. In addition to gaining the specified number of credits he must have an equal number of quality points — that is, a standing of 1.0.

Regardless of the length of time the student has attended the University, a minimum of thirty of the last thirty-six credits presented for the degree must be completed in residence at the University.

Not more than thirty-two of the credits required for an undergraduate degree may be gained by extension, special examination, or both. A student may not satisfy in excess of one-half the requirements for a major by extension, special examination, or both.

QUADRANGLE — There are four residence halls for U.K. men.



The Graduate School. A student is required to satisfy the requirements for the degree for which he is a candidate as of the date on which he enters the Graduate School. In all cases, however, a minimum residence of one year (36 weeks) is required for the master's degree, and three years (108 weeks) for the doctorate. See the Catalog or Graduate Bulletin for the specific requirements for the various graduate degrees.

No transferred credits are accepted toward the master's degree. Two years of graduate work from a fully accredited institution which offers the doctor's degree may be accepted toward the Ph.D. or the Ed.D. degree.

Theses must be presented in final form to the Dean of the Graduate School not later than three weeks before the date set for the final oral examination. The oral examination must be taken at least fifteen days before the close of the semester or summer session.

A graduate student must maintain a standing of 2.0 and no grade below C shall be counted.

One-third of the residence and credit required for a master's degree may be taken by University extension.

No graduate credit is given for courses taken by correspondence.

No work is given graduate credit unless the student was enrolled in the Graduate School at the time during which the work was taken.

Application for a Degree. All students in residence during the summer session who are to be candidates for degrees in August should make formal application in the office of the Registrar on Friday and Saturday, June 29 and June 30. **No applications for graduation in August will be received after July 11.** The student is responsible for making application for the correct degree. That is, if a student is working for the degree, Bachelor of Arts in Education, he should apply for this degree and not make application for the degree, Bachelor of Arts, granted in the College of Arts and Sciences. If, for any reason a student does not receive the degree at the time indicated on the application, it will be necessary for him to file another application, as the University is not responsible for carrying over applications from one session to another.

COLLEGE OF ARTS AND SCIENCES

The college courses are planned to meet the needs of various classes of students. They may be listed under the following heads:

1. General cultural courses with majors and fields of concentration, leading to the degrees of A.B. and B.S.
2. Professional courses in industrial chemistry, leading to the degree of B.S. in Industrial Chemistry; in journalism, leading to the degree of A.B. in Journalism; in library science, leading to the degree of B.S. in Library Science; in music, leading to the degree of B.M.; and in bacteriology, leading to the degree of B.S. in Medical Technology.
3. Professional courses in which the general requirements for the A.B. and B.S. degrees are fulfilled.

4. Pre-Professional courses meeting the requirements for admission to professional schools.
5. Combined courses, by means of which students may have a year or more in gaining both the A.B. or B.S. and a degree in Law, Medicine, or Dentistry.
6. Graduate courses leading to the masters and doctors degrees in the Graduate School.

The Degree of Bachelor of Arts. For the degree of Bachelor of Arts the student is required to gain a total of 128 credits and 128 points; that is, a standing of 1.0, subject to the following conditions.

OUTLINE OF REQUIREMENTS FOR GRADUATION

Lower Division – Freshman and Sophomore Years

General Requirements:

- English, first and second semesters, freshman year 6 credits.
- General Hygiene, first or second semester, 1 credit.
- Physical Education, freshman and sophomore years, passing the physical education achievement tests.
- Military Science (men), freshman and sophomore year, 8 credits.

Group Requirements:

1. Foreign Languages. (French, German, Greek, Italian, Latin, Russian, Spanish. Required: Passing a basic achievement examination, or the second year of a language with C grades or better.
2. **The Humanities.** To satisfy the lower division requirements in the Humanities students in the College of Arts and Sciences must earn four credits in literature and philosophy (Humanities A, B, or C) and two credits in Art or Music (Humanities D or E). These courses should be taken during the sophomore year, and two courses from A, B, or C may not be taken simultaneously.
3. **The Social Studies.** The student is permitted to choose two of the following courses, to satisfy the group requirement in the social studies: History 5a, b, 4a, b, Political Science 51a, b, Anthropology 3a, Sociology 3a, b, Geography 3a, b.
4. **The Biological Sciences.** Students may satisfy the biological group requirements by completing a minimum of six semester credits from the following courses: Anatomy and Physiology 2, 10; Anthropology 1; Bacteriology, 2a, b, 52; Botany 1, 2, 25; Psychology 1a, b; Zoology 1. Note.— Six credits of the courses that satisfy the biological and physical sciences requirements must be in courses that have laboratory.
5. **The Physical Sciences.** Students will be permitted to take work in either one or two departments in order to satisfy the physical science requirement. Six or more credits can be taken from the following courses: Astronomy 51a, b; Chemistry 1a, b, 4a, b; Geology 50a, b (50a

is prerequisite for 50b), 3, 30a, b; Mathematics 5, 17, 18, 19; Physics 1a, b, 3a, b, 51a, b (51a is prerequisite for 51b). See note under Biological Sciences.

Note.— A student must have attained a standing of 1.0 in order to be promoted to the next higher classification.

Freshman Core Curriculum	Credits
General Hygiene	1
Military Science (men)	4
Physical Education	0
English	6
Social Studies	6
Physical or Biological Sciences	6
Foreign Languages or free electives	6

Total number of credits required in Lower Division, 64.

The normal load per semester is 16 credits.

Rules and Procedures

1. Superior Students: Entering freshmen, in the upper twenty-five per cent of the classification scale, as determined by University of Kentucky classification tests, may substitute other courses in the groups for those courses which are set up especially to satisfy group requirements. Other students, in the top twenty-five per cent of the classification scale of the University of Kentucky classification tests, with a standing of 2, may be granted the same privilege.
2. The requirements in whole or in part for English, for General Hygiene, and for any of the Groups under Section II, may be satisfied without credit by passing a departmental proficiency examination.

Upper Division — Junior and Senior Years

Field of Concentration. Forty credits are to be elected subject to the approval of the student's adviser and the Dean of the College, and must be in courses not open to freshmen.

Major. At least 15 credits of the required 40 in the field of concentration must be in one department, the major department, exclusive of courses open to freshmen. However, the major department may require more than the minimum 15. A minimum of 6 credits is required as a prerequisite for a major in any department. A **Topical Major** is also offered which is not confined to one department or field.

The Four Generically Related Fields Are: 1. Literature, Philosophy, and the Arts. 2. Social Studies. 3. Physical Sciences. 4. Biological Sciences.

Tutorial Work and Comprehensive Examinations. Students majoring in the departments of Anatomy and Physiology, Ancient Languages, Art, Botany, Economics, Geology, German, Journalism, Music, Philosophy, Physical Education, Physics, Political Science, Psychology, Radio Arts, Romance

Languages, Social Work, Sociology, and Zoology will be required to schedule tutorial courses as specified by their major department and to take final comprehensive examinations as a prerequisite for graduation.

COLLEGE OF AGRICULTURE AND HOME ECONOMICS

Agriculture

To receive the degree Bachelor of Science in Agriculture a student is required to complete a total of 136 credits and 136 points. These represent the minimum requirements for graduation. There are seven curricula in agriculture, and completion of the requirements of any one of these leads to the degree. The student is responsible for meeting the requirements for graduation.

The General Curriculum in Agriculture enables the student to obtain a general education and at the same time pursue some specialization in a chosen field. In this curriculum the student has the privilege of selecting one of the following options for study during the junior and senior years: Agricultural Entomology, Agricultural Extension, Agricultural Inspection, Agricultural Science, Agronomy, Farm Economics, General Agriculture, Markets and Rural Finance, Rural Sociology, Soil Conservation, and Vocational Agriculture.

The Curriculum in Agricultural Economics prepares students for business opportunities in agriculture and allied industries.

The Curriculum in Agronomy prepares students to pursue graduate work, to be specialists in soils and crops, and to farm.

The Curriculum in Animal Industry is for students whose primary interest is in livestock production and the livestock industry. The student in



DEEP SHADE — One of the beauty spots on the U.K. campus, just east of Lafferty Hall.

this curriculum chooses one of the following options: Animal Husbandry, Dairy Manufacturing, Dairy Production, or Poultry Husbandry. Proper selection of free electives permits a student to prepare to teach Vocational Agriculture.

The Curriculum in Horticulture is for students interested in the production of fruits and vegetables and in horticultural industries. It provides opportunity for a student to prepare to teach Vocational Agriculture.

The Curriculum in Ornamental Horticulture prepares specialists in floriculture and landscape gardening.

The Curriculum for Teachers of Vocational Agriculture prepares students to be teachers of agriculture in high school.

An undergraduate transfer student is required to complete in the University a minimum of 68 credits, including 43 in agriculture. The College of Agriculture and Home Economics and Eastern Kentucky State College have in operation a cooperative plan which recognizes all courses in agriculture taught at Eastern as carrying course and residence credit toward the degree, Bachelor of Science in Agriculture, awarded by the University of Kentucky. Acceptance of transfer credit for courses in agriculture is limited to courses numbered 1 to 99 in the University of Kentucky catalog. The student must have satisfied the prerequisites listed in the University catalog.

A student having a bachelor's degree may be eligible for the degree Bachelor of Science in Agriculture when he has completed the requirements of a curriculum in agriculture. This shall consist of not less than thirty credits beyond the first degree.

Home Economics

To receive the degree Bachelor of Science in Home Economics a student is required to complete a total of 136 credits and 136 points. These represent the minimum requirements for graduation. There are six curricula in home economics and a student who completes the requirements of any one of these qualifies for the degree. The student is responsible for meeting requirements for graduation.

The General Curriculum in Home Economics meets the needs of most students and provides the basic requirements for the curricula in major fields. It enables the student to obtain a general education and at the same time pursue some specialization in a chosen field of home economics.

In addition to the general curriculum, provision is made for majors in the following fields: Child Development and Family Living; Clothing, Costume Design, Textiles and Interior Decoration; Home Economics Extension; Institution Economics; and Vocational Home Economics.

A transfer student is required to complete in the University a minimum of seventeen credits of home economics.

COLLEGE OF ENGINEERING

Admission. In addition to meeting the general requirements for admission to the University, the applicant for admission to the freshman class of the College of Engineering shall include in high school credits one unit of

plane geometry and one and one-half units of algebra. It is recommended that the student offer one-half unit in solid geometry, otherwise this subject will be added to the requirements of the freshman year.

Students whose scores on the University classification tests are in the lower one-fourth or those lacking in the requirements for algebra may enter the College of Engineering. The schedules of such students will be adjusted in accordance with their placement test as directed by a special orientation committee of the College of Engineering and the Personnel Office.

Courses of Study and Degrees. The College of Engineering offers instruction leading to the following baccalaureate degrees:

Bachelor of Science in Civil Engineering

Bachelor of Science in Electrical Engineering

Bachelor of Science in Mechanical Engineering

Bachelor of Science in Metallurgical Engineering

Bachelor of Science in Mining Engineering

The courses of study leading to these degrees are essentially the same during the freshman year. This gives the student the benefit of a period of training in fundamental subjects before he is required to choose among the different fields.

There will be a freshman class in engineering beginning work in the Summer Session of 1951.

THE COLLEGE OF LAW

The College of Law offers regular courses in the Summer Session, during which students may obtain credits and residence equivalent to one-half semester. By attending two Summer Sessions, students may thus materially shorten the time required for graduation. A total of six semesters or the equivalent is required for graduation. The same quality of work is required in the Summer Session as is required in the regular semesters.

The College is fully accredited by all agencies which establish standards for law schools, including the Court of Appeals of Kentucky, the Association of American Law Schools, the American Bar Association, the Regents of the University of the State of New York, and the Courts and Bar Examiners of all forty-eight states and the Federal jurisdictions. It has a chapter of the Order of the Coif, an honor society for the recognition of excellence in law study, and its law review, *The Kentucky Law Journal*, is on all lists of outstanding legal periodicals. Its Library of more than 36,000 volumes is among the six largest in the South and regionally recognized for the completeness of its Reports and periodical collections. All members of the Faculty have had experience in practice and done graduate work in law. Its graduates are frequently awarded scholarships and fellowships for graduate study in law.

The courses in the College of Law for the Summer Session are planned with special reference to three types of students: first, students who desire to shorten the three-year period by studying during the summer; second, public

school teachers who desire to know something about the law either for their own benefit or for the purpose of advising students; third, lawyers, probate judges, and prosecuting attorneys who desire either to complete their work for a degree or to become acquainted with recent developments of the law. However, no new class of beginning students is admitted to the College during the Summer Session. The next regular class of new students will be admitted in September, 1951.

Those interested in fuller information about the College and its facilities are invited to write the Dean, requesting a copy of the Bulletin of the College of Law or any specific information.

COLLEGE OF EDUCATION

The College of Education grants the degree of Bachelor of Arts in Education.

To be admitted to the College of Education a student shall meet the following requirements: standing of at least 1.0 (average of C on all previous work) or, if an entering freshman, he must rank in the upper three-fourths on the University placement tests.

For a degree in education the student is required to present a total of 128 credits with a standing of 1.0.

General Requirements for Students in the Field of Secondary Education

A student who majors in secondary education must complete 128 credits with a standing of 1.0 to be graduated. Majors in secondary education have the following options in the choice of curricula leading to certificates: (1) an area of concentration, (2) two majors, (3) one major and two minors, or (4) one major and one minor when the credit in both is 48 credits, (54 credits when English is included as a major.

Teaching Majors, Minors, and Areas of Concentration

A major shall consist of 24 credits, except a major in English which shall shall require 30 credits.

A minor shall require 18 credits.

An area of concentration varies with the subjects. Usually it shall be 48 credits unless otherwise specified.

I. General Requirements	Credits
a. English, including composition, literature, and speech	12
b. Health, Physical Education, and Safety	6
c. Psychology	6
d. Group requirements	27

Each candidate must present not less than 27 credits distributed among three fields with not fewer than 6 credits in any field. Two of these three groups must be in fields different from the majors and minors or area of concentration. One group may be in the same field but not in the same



BUSINESS AND PLEASURE — Working on a class assignment.

subject as the major or one minor. The fields from which the 27 credits may be selected are:

- Fine Arts (Music, Art, and Humanities D and E)
- Foreign Languages (French, German, Italian, Latin, Russian, Spanish)
- Mathematics (all mathematics courses except astronomy)
- Philosophy and Psychology (all courses taught in the Departments of Philosophy and Psychology)
- Sciences (Anatomy and Physiology, Anthropology 1, 11, 111, Astronomy, Botany, Chemistry, Geology, Physics, Zoology)
- Social Sciences (Anthropology (except 1, 11, 111), Economics, Geography, History, Political Science, Sociology)
- Vocational Subjects (Agriculture, Commerce, Engineering, Home Economics, Journalism, Law, Library Science, Radio Arts)

II. Professional Preparation	Credits
a. Introduction to Education	2
b. Educational Psychology	3
c. The Secondary School Pupil	3
d. Fundamentals of Secondary Education	3
e. Student Teaching	9

General Requirements for Students in the Field of Elementary Education

A student who majors in elementary education must complete a total of 128 credits, with a standing of 1.0, to be graduated.

I. General Requirements	Credits
a. English, including composition, speech, and English literature	15
b. Science, including heredity	12
c. Social Sciences, including American History, European History, Kentucky History, Sociology, and Geography	21
d. Fine Arts, including public school music and public school art	12
e. Psychology	6
f. Nutrition	3
g. Health and Physical Education	6
II. Professional Preparation	
a. Child Growth and the Curriculum	6
b. Industrial Arts in the Elementary School	2
c. Teaching Arithmetic in the Elementary School	3
d. The Teaching of Reading	3
e. Children's Literature	3
f. Science in the Elementary School	3
g. Student Teaching in the Elementary School	12
III. Electives	21

COLLEGE OF COMMERCE

The degree of Bachelor of Science in Commerce is conferred upon students who meet the requirements of any one of the curricula offered by the College of Commerce. The minimum number of semester credits required for graduation is 128, except under the Industrial-Administration Curriculum which requires 140. The scholarship standing must be at least 1.0.

The courses listed in the General Business Curriculum constitute a core curriculum, because with minor exceptions, these courses are required in all curricula. They are considered basic to all majors or fields of concentration.

COLLEGE OF PHARMACY

At present the College of Pharmacy does not offer a summer session program.

THE GRADUATE SCHOOL

The Growth of the Graduate Program. The demand for graduate work at the University of Kentucky has grown rapidly in recent years. High school teachers, supervisors, principals and superintendents of schools, and teachers in teachers' colleges and junior and senior colleges are seeking the education and training represented by higher degrees. To meet this demand, the several colleges of the University are providing larger programs of work for graduate students.

Residence Credit. A graduate student must carry at least six hours (the normal load) in the Summer Session to be entitled to full residence credit for the session. A load in excess of nine hours is strongly discouraged.

Applicants for Graduate Degrees. Applications for degrees must be made at least four weeks before the date of commencement. These applications are made at the office of the Registrar of the University.

Minimum Requirements for the Masters Degree. A candidate for the degree of Master of Arts or Master of Science is required to complete 24 credits of graduate work (of which two-thirds is in a major and one-third in electives), spend a full year or the equivalent in residence, present an acceptable thesis, have a reading knowledge of one modern foreign language and pass a final oral examination. He must maintain a standing of 2.0.

Minimum Requirements for Professional Degrees. Professional Masters degrees in Education, Agriculture, Engineering, Home Economics, and Public Health may be secured with the same requirements as given above except that there is no language requirement. In Education 6 additional credits may be offered in lieu of the thesis with permission of the department. In Agriculture and Home Economics, 12 additional credits and 9 additional weeks may be offered in lieu of the thesis with departmental consent.

General Requirements for a Masters Degree. All candidates for any master's degree must have completed the equivalent of a B.A. or B.S. degree in a fully accredited institution. Part-time residence during any semester or summer session is computed on the basis of one and one-half weeks of residence for each credit earned, but the amount of residence for part-time work in the regular school year is limited, except for graduate assistants and part-time instructors, to not more than six weeks in any one semester.

Under certain conditions, up to one-third of the credit and residence requirement for any master's degree may be satisfied by off-campus courses taught by regular faculty members. Correspondence credits may not be applied toward advanced degrees.

General Requirements for the Doctors Degree. The degree of Doctor of Philosophy is offered with major work in the following fields: Agricultural

Economics, Bacteriology, Chemistry, Education, Economics, English, History, Mathematics, Physics, Psychology, Political Science, Romance Languages, and in the combined fields of Sociology and Rural Sociology. Minor work may be carried in any department offering graduate courses.

The degree of Doctor of Philosophy is conferred upon a candidate who after completing not less than three years of graduate work devoted to the study of a special field of knowledge, satisfies the language requirements, passes the required examination in the subjects, presents a satisfactory dissertation, and is deemed worthy of recognition as a scholar of high attainments in his chosen province.

The doctors degree is intended to represent not a specified amount of work covering a specified time, but the attainment through long study of independent and comprehensive scholarship in a special field. Such scholarship should be shown by the candidate's thorough acquaintance with present knowledge in his special field of learning and a marked capacity for research.

A minimum of three collegiate years of resident graduate work, of which at least the last year must be spent at the University of Kentucky, is required for the doctorate. The full time of each of these years must be spent in study. Part-time students and those holding assistantships or engaging in other outside activities will of course be required to take a proportionately longer time.

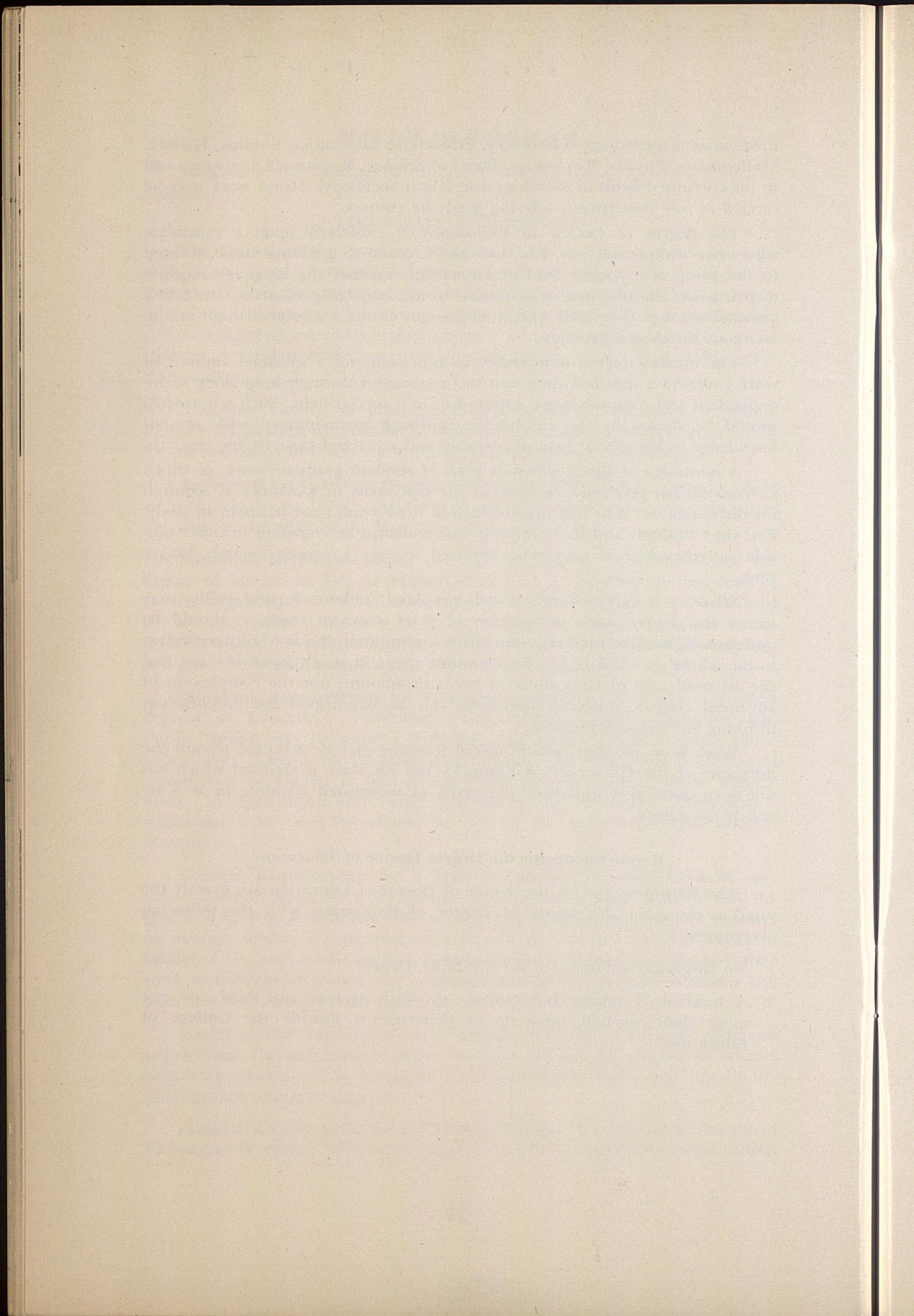
While it is expected that a well prepared student of good ability may secure the degree upon completion of three years of study, it should be understood that this time requirement is a minimum and is wholly secondary to the matter of scholarship. Neither time spent in study, however long, nor the accumulation of facts, however great in amount, nor the complexion of advanced courses, however numerous, can be substituted for independent thinking and original research.

Work done in other institutions of learning may be accepted toward the doctorate at the University of Kentucky but no work is credited which has not been done in a college or university of recognized standing or in a research laboratory.

Requirements for the Degree Doctor of Education

The Requirements for the degree of Doctor of Education are exactly the same as those for the degree of Doctor of Philosophy with the following exceptions:

1. No languages are required for the Ed.D. Degree.
2. A total of 72 credits is required, of which at least one-third and not more than one-half must be in departments outside the College of Education.



Part II

SCHEDULE OF CLASSES
BY COLLEGES AND DEPARTMENTS

THE
MUSEUM OF
THE
MUSEUM OF
THE MUSEUM OF

EXPLANATIONS AND ABBREVIATIONS

Colleges are arranged according to order in the catalog and in general, the departments of each College are arranged alphabetically.

Days of recitations are indicated by the initial letters of the days. For example, M-TH indicates the class is offered Monday through Thursday, M-S indicates the class is offered Monday through Saturday, etc.

The buildings are indicated as follows:

A, Administration	McVH, McVey Hall
AE, Agricultural Engineering	MeH, Memorial Hall
AG, Alumni Gymnasium	MeL, Meat Laboratory
AH, Anderson Hall	MC, Memorial Coliseum
AP, Animal Pathology	MH, Miller Hall
Agr, Agriculture	ML, Mining Laboratory
BH, Barker Hall	Museum
BL, Bowling Lanes	NH, Neville Hall
CA, Chemistry Annex	NS, Nursery School
D, Dairy	Obs, Observatory
DC, Dairy Center	Pence, Pence Hall
FA, Fine Arts	PA, Psychology Annex
FH, Frazee Hall	Q, Quonset
FB, Funkhouser Biological Sciences	SP, Stock Judging Pavilion
HB, Health and Hygiene	SS, Social Sciences
HE, Home Economics	SU, Student Union
J, Journalism	TEB, Taylor Education Building
KH, Kastle Hall	TL, Tobacco Laboratory
KL, King Library	WG, Women's Gymnasium
L, Lafferty Hall	WH, White Hall

RECITATION HOURS**

First Hour	7:00— 7:50
Second Hour	8:00— 8:50
Third Hour	9:00— 9:50
Fourth Hour	10:00—10:50
Fifth Hour	11:00—11:50
Sixty Hour	12:00—12:50
Seventh Hour	1:00— 2:00
Eighth Hour	2:10— 3:10
Ninth Hour	3:20— 4:20
Tenth Hour	4:30— 5:30

**Recitation hours are fifty minutes during the mornings and sixty minutes during the afternoons.

INSTRUCTIONS FOR CLASSIFICATION

1. After you have registered go to the Dean's booth in the Coliseum for information and assignment to your adviser.
2. Make out your schedule with the help of your adviser.
3. In making out your schedule write, in the proper spaces, the **name** of the **department** with the course and section numbers.
4. After classes are assigned leave four copies of your schedule at your Dean's booth.
5. **Any changes** from the original schedule must be made in the Dean's office. To drop a subject at any time during the quarter, you should first consult your Dean.
6. Extra work petitions must be presented when schedules exceed the amount permitted by the college in which you are enrolled. A standing of 2.0 is required.
7. Four copies of your completed schedule must be filed with your Dean before the close of the registration period. Failure to do this may result in loss of credit for the term.
8. A course cannot be added to your schedule after June 23.

COLLEGE OF ARTS AND SCIENCES

Course Number	Subject	Credits	Days	Hour	Building and Room Number	Instructor
---------------	---------	---------	------	------	--------------------------	------------

PERSPECTIVES IN CONTEMPORARY LIFE

Students who are interested in this program must sign up for three of the following courses, for a total of 9 credits.

Objective: To acquaint students with the chief aspects of the world in which they live.

Method:

1. Lectures from 8:00 to 9:00 o'clock, Monday through Thursday, in McVey Hall, Room 111. Emphasis will be placed upon the interdependence of scientific, social and philosophical problems. Lectures by well known professors.
2. Committee meetings from 9:00 to 10:00 o'clock in the Cafeteria. Groups of 6 each.
3. Discussion meetings from 10:00 to 12:00 of specialized topics, as listed below. The meetings will be in groups of 24 for periods of two and one-half weeks each for the three classes selected by the student.
4. In addition to the class meetings mentioned above, the classes will meet from 8:00 to 12:00 on two Fridays during the term

Hist.120	Eur. in the 20th Century	3	M-Th	4,5†	FH 204	Kraehe
Phil.120	Great Religions of the World	3	M-Th	4,5†	FA 6	DeBoer
Jour.106	Influence of the Newspaper	3	M-Th	4,5†	J 114	Moore
Pol.Sci. 170	Political Parties	3	M-Th	4,5†	McVH 129	Shannon
Pol. Sci. 165	World Politics	3	M-Th	4,5†	FA 209	Vandenbosch
Psy.104	Social Psy.	3	M-Th	4,5†	McVH 103	Calvin
Soc.127	Social Classes	3	M-Th	4,5†	McVH 206	Anderson
Art 143	Contemp. Art	3	M-Th	4,5†	FA 208	Amyx
Ed.175c	Mod. Ed. Prob.	3	M-Th	4,5†	To be arranged	

†All of the above courses meet at the 2nd and 3rd hours as follows:

M-Th	2	McVH 111
M-Th	3	Cafeteria

ANATOMY AND PHYSIOLOGY

R. S. Allen, Head of Department, Funkhouser Biological Sciences Building, Room 304

UPPER DIVISION REQUIREMENTS - Junior and Senior Years

Requirements in the Field of Concentration: Forty credits of advanced work in the field of Biological Sciences during the Junior and Senior years, including the Major work.

Requirements for a Major. Prereq: Anatomy and Physiology 10; Zoology 1; Botany 1; Physics 1a and 1b. Chemistry 1a and 1b. Required: A minimum of 3 elective credits of advanced work in Anatomy and Physiology plus the courses, Anatomy and Physiology 107, 108, 109, 116a and 116b, and passing a comprehensive examination in the Senior year.

LOWER DIVISION REQUIREMENTS - See Page 20

*2	Elem. Anat. & Physiol., (Lec & Rec.)	3	M-S	3	FB 313	Allen
10-1	Gen Physiol., Lec.	5	M-S	4	FB 313	Boyarsky
10-11	Gen Physiol., Lab.		T-F	1-2:50	FB 307	Assistant

Prereq: Chem 1a & 1b; Phys. 1a & 1b. Phys. may be taken concurrently.

Courses open only to Upper Division & Graduate Students:

C105	Arch. of the Human Skeleton, (Lec. & Rec.)	3	M-S	4	FB 306	Allen
	Prereq: Junior standing					
106	Intro. to Endocrinology	3	M-S	2	FB 313	Archdeacon
	Prereq: A. & P. 10 or the equiv; Zool. 7b, Chem. 1a & 1b; & the instructor's consent.					
108	Circulation, Respiration, & Metabolism	3	M-S	4	FB 307	Archdeacon
	Prereq: A. & P. 10 or the equiv.					
109	Cellular Physiol.	3	M-S	5	FB 306	Boyarsky
	Prereq: A. & P. 10 or the equiv., Physics & Gen. Chem.					

Course open only to Graduate Students:

201a-i	Res. in Physiol	3 ea.	By Appt.		303a FB 304a 305a	Staff
--------	-----------------	-------	----------	--	-------------------------	-------

* Open to Freshmen

COLLEGE OF ARTS AND SCIENCES — Continued

Course Number	Subject	Credits	Days	Hour	Building and Room Number	Instructor
---------------	---------	---------	------	------	--------------------------	------------

ANCIENT LANGUAGES

Jonah W. D. Skiles, Head of the Department, Frazee Hall, 102.

UPPER DIVISION REQUIREMENTS - Junior and Senior Years

Requirements in the Field of Concentration: Forty credits of advanced work in the field of Literature, Philosophy, and the Arts during the Junior and Senior years, including the major work.

Requirements for a Major: Prereq: First two years of college Latin or Greek. Required: A minimum of fifteen credits of advanced work in Ancient Languages; Tutorial Seminar; comprehensive examination in the Senior year.

Note--The student who presents one unit of high school foreign language will be permitted to enroll in first year work in the same language for full credit. The student who presents two units of high school foreign language will be permitted to enroll in first year work in the same language, but will receive credit only if he makes at least a B standing in both semesters of this course.

LOWER DIVISION REQUIREMENTS - See Page 20

*C1a	Beginning Latin	1	M-S	2	FH 102	
*C1b	Elem. Latin Reading	2	M-S	2	FH 102	
(C1a and C1b are planned as a refresher sequence for teachers and may not be taken separately.)						
*1a	Beginning Latin	3	M-S	2	FH 106	Skiles
*1b	Elem. Latin Reading	3	M-S	2	FH 105	
70	Greek Mythology	2	M-Th	5	FH 106	Skiles
No prereq. Given in Eng.						

Courses open only to Upper Division & Graduate Students:

121	Roman Civilization	2	M-Th	5	FH 102	
No prereq. Given in Eng.						
150	The Tchg. of Latin	3	M-S	3	FH 106	Skiles
C150	The Tchg. of Latin	1	M-S	4	FH 106	
(Demonstration Class in Beginning High School Latin, June 20--July 14)						
C150	The Tchg. of Latin	4	M-S	3,4,5	FH 106	Staff
(June 20--July 14)						
151a-h	Indp. Work in Anc. Lang.	3 ea.	By Appt.		FH 102	Skiles
(Reading, grammar and composition, and research courses in Greek or Latin to suit the needs of individual students.)						

Courses open only to Graduate Students:

200	Res. in the Tchg. of Classical Languages	3	By Appt		FH 106	Skiles
-----	--	---	---------	--	--------	--------

ANTHROPOLOGY

Wm. S. Webb, Head of Department, Pence Hall 101.

UPPER DIVISION REQUIREMENTS - Junior and Senior Years

Requirements in the Field of Concentration: Forty credits of advanced work in the Social or Biological Science groups during the Junior and Senior years, including the major work.

Requirements for a Major: Anthropology 1,2, and 3a (Geography 3a or Sociology 3a is equivalent of Anthropology 3a.) Required: A minimum of 24 credits of advanced work, including Anthropology 115, 125, 141, 150 a-b. Comprehensive Examination.

LOWER DIVISION REQUIREMENTS - See Page 20

*†1	Intro. to Phys. Anthro.	3	M-S	4	SS 128	Snow
*2	Intro to Cultural Anthro.	3	M-S	2	SS 128	Essene

Courses open only to upper division & graduate students:

103a,b,c,d	Indp. Work in Anthro.	3 ea.	By Appt.		SS 125	Staff
180	Anthro: Man & His Works	3	M-S	3	SS 128	Snow Woodbury Essene

* Open to Freshmen

† Offered only on sufficient demand.

COLLEGE OF ARTS AND SCIENCES — Continued

Course Number	Subject	Credits	Days	Hour	Building and Room Number	Instructor
---------------	---------	---------	------	------	--------------------------	------------

ART
Edward W. Rannells, Head of Department, Fine Arts, 207

UPPER DIVISION REQUIREMENTS - Junior and Senior Years

Requirements in the Field of Concentration: Forty credits of advanced work in the field of Literature, Philosophy, and the Arts during the Junior and Senior years, including the Major work.

Requirements for a Major: Prerequisites: Art 30 & 61 (drawing), 62 (design), 35 or 36 (history of art). Required: A minimum of 26 credits of advanced work in art - 12 credits in studio courses, 12 credits in history of art, 2 credits in the senior seminar plus a comprehensive examination in the Senior year.

Requirements for a Major in Art Education. Prerequisites: Art 30 & 61 (scheduled concurrently), 62. Required: a minimum of 18 credits in Art - Art 10a,b, 36, 65a, 65b or 64a, 143, 157 - and 22 credits in Education - Edu. 16, C44, 105, 110, 142, C147

LOWER DIVISION REQUIREMENTS - See Page 20

10a	Pub. Sch. Art	2	TTh	7,8	FA 302	Fitz
				6 hrs.	By Appt.	
10b	Pub. Sch. Art	2	MF	7,8	FA 302	Fitz
				6 hrs.	By Appt.	
*51a,b	Painting (non-art majors)	2 ea.	TTh	7,8,9	FA 202	J.Sternbergs
				6 hrs.	By Appt.	
*61	Elem Drawing	2	MWF	7,8,9	FA 206	J.Sternbergs
				3 hrs.	By Appt.	
*62	Basic Design	3	MWF	7,8,9	FA 106	Barnhart
				6 hrs.	By Appt.	
64a,b	Intermed. Design	3 ea.	TTh	7,8,9	FA 104	Barnhart
				9 hrs.	By Appt.	
65a,b	Painting	3 ea.	M-F	7,8,9	FA 302	Sternbergs
	<u>Courses open only to Upper Division & Graduate Students:</u>					
143	Contemp. Art	3	Open only to students taking "Perspectives in Contemp. Life." See Page 34			Amyx
155	Art in Elem. Schs.	2	MTThF	5	FA 302	Fitz
160a,b	Seminar in Art	1 ea.	W	8,9	FA 309	Staff
165a,b	Intermed. Painting	3 ea.	MF	7,8,9	FA 302	Rannells
				6 hrs.	By Appt.	
175a,b,c,d	Indp. Work: History, Criticism	3 ea.			FA 205	Rannells
				15 hrs.	By Appt.	
177a,b,c,d	Indp. Work: Painting, Printmaking	3 ea.			FA 203	
				15 hrs.	By Appt.	
179a,b,c,d	Indp. Work: Design, Construc.	3 ea.			FA 303	Barnhart
				15 hrs.	By Appt.	

BACTERIOLOGY

M. Scherago, Head of Department, Funkhouser Biological Sciences, 104

UPPER DIVISION REQUIREMENTS - Junior and Senior Years

Requirements in the Field of Concentration: Forty Credits of advanced work in the field of Biological Sciences during the junior and senior years, including the major work.

Requirements for a Major. Prerequisites: Chem. 1a,b; Bact. 2b or 52 and 104.

Required: Two credits in Seminar and a minimum of 14 additional credits of advanced work in Bacteriology, including Bact 125

LOWER DIVISION REQUIREMENTS - See Page 20

52-1	Prin. of Bact., Lec.(MWThF	1	FB 124	Edwards
52-2	Prin. of Bact., Lab.(4	MWThF	2,3	FB 208	Scharfschwerdt
52-3	Prin. of Bact., Lab.(MWThF	7,8	FB 208	Scharfschwerdt
	Prereq., or concurrent: Chem. 1b, or 4b					
56-1	Bact. of Foods, Lec.(MTThF	1	FB 125	Weaver
56-2	Bact. of Foods, Lab.(4	WS	1,2	FB 207	Hardin
			TTh	2,3	FB 207	Hardin
	Prereq.: Bact. 102 or 52; or 2b & Chem. 1b					

* Open to Freshmen

COLLEGE OF ARTS AND SCIENCES — Continued

Course Number	Subject	Credits	Days	Hour	Building and Room Number	Instructor
57-1	Bact. of Water & Sewage, Lec.(MTWTF	3	FB 124	Weaver
57-2	Bact. of Water & Sewage, Lab.(4	MTThS	4,5	FB 207	Hardin
	Prereq: Bact. 102 or 52; or 2b & Chem. 1b					
<u>Courses Open Only to Upper Division & Graduate Students:</u>						
103-1	Pathogenic Bact., Lec.(MTWTF	5	FB 124	Humphries
103-2	Pathogenic Bact., Lab.(4	MTWTF	7,8	FB 206	Humphries
	Prereq: Bact. 102 or 52; or 2b & Chem. 1b					
104	Appl. Bact., Lab.	2	By Appt.		FB 119	Scharfschwerdt
	Prereq: Bact. 102 or 52; or 2b & Chem. 1b					
110a	Lab. Diagnosis, Lab.	3	M-S	1,2	FB 110	Hotchkiss
	Prereq: Preceded or accompanied by Bact. 103					
110b	Lab. Diagnosis, Lab.	3	M-S	3,4	FB 110	Hotchkiss
	Prereq: Preceded or accompanied by Bact. 103					
111-1	Gen. Path., Lec.(FS	3	FB 124	Scherago
		4	TTh	5	FB 124	Scherago
111-2	Gen. Path., Lab.(MWFS	4,5	FB 210	Scherago
	Prereq: Anat. & Physiol. 10; Zool. 7b, 101b and 106; Bact. 103, & consent of Head of Department					
115a-f	Indp. Work	3 ea.	By Appt.		FB 104	Staff
	Prereq: Any course in Bact. above 2b.					
120a	Hospital Lab. Practice	4	By Appt.		Good Sam. Hospital Lab.	
120b	Hospital Lab. Practice	6	By Appt.		Good Sam. Hospital Lab.	
	Prereq: Bact. 110a and b; consent of Head of Department.					
<u>Courses Open Only to Graduate Students:</u>						
201a-g	Res. in Bact., Lab.	5 ea.	By Appt.		FB 104	Humphries & Others
206-1	Bact. of Foods, Lec.(MTThF	1	FB 125	Weaver
206-2	Bact. of Foods, Lab.(4	WS	1,2	FB 207	Hardin
			TTh	2,3	FB 207	Hardin
	Prereq: Bact. 102 or 52; or 2b; Chem. 1b.					
207-1	Bact. of Water & Sewage, Lec.(MTWTF	3	FB 124	Weaver
207-2	Bact. of Water & Sewage, Lab.(4	MTThS	4,5	FB 207	Hardin
	Prereq: Bact. 102 or 52; or 2b; Chem. 1b.					
210	Clinical Mycology, Lab.	2	By Appt.		FB 110	Hotchkiss
	Prereq: Chem. 130b; reading knowledge of one foreign language; preceded or accompanied by Bact. 125.					
220	Hist. of Bact., Lec.	2	By Appt.		FB 104a	Weaver
	Prereq: Bact. 125					
222	Adv. Gen. Bact.	4	By Appt.		FB 104a	Weaver & Hardin
	Prereq: Bact. 125; Chem. 130a,b					
224	Disinfectants & Antibiotics	3	By Appt.		FB 110	Hotchkiss
	Prereq: Bact. 2b or 52 and 104; Chem. 130b					
270	Electron Microscopy	3	By Appt.		FB 5	Edwards
	Prereq: Physics 3a, 3b; consent of Instructor					
272	Viruses & Rickettsiae	4	By Appt.		FB 5	Edwards
	Prereq: Bact. 125					
BOTANY						
Herbert P. Riley, Head of Department, Funkhouser Biological Sciences, 220						
<u>UPPER DIVISION REQUIREMENTS - Junior and Senior Years</u>						
Requirements in the Field of Concentration: Forty credits of advanced work in the field of Biological Sciences during the Junior and Senior years, including the major work.						
Requirements for a Major. Prerequisites: Botany 2 or 1b. Required: a minimum of 20 credits of advanced work in Botany and the passing of a comprehensive examination covering chiefly the fields of morphology, taxonomy, and physiology.						
<u>LOWER DIVISION REQUIREMENTS - See Page 20</u>						
*1	Gen. Bot., Lec.(4	M-Th	2	FB 211	Henrickson
	Gen. Bot., Lab.(M-Th	4,5	FB 217	McInteer & Henrickson
19	Dendrology	2	M-Th	3	FB 319	McInteer
	Prereq: 1 or 25					

* Open to Freshmen

COLLEGE OF ARTS AND SCIENCES — Continued

Course Number	Subject	Credits	Days	Hour	Building and Room Number	Instructor
30	Intro. to Heredity Prereq: 4 credits in the biol. sciences.	3	M-S	3	FB 213	Riley
<u>Courses open only to Upper Division & Graduate Students:</u>						
C103a	Plant Physiol., Lec. Plant Physiol., Lab. Prereq: 6 credits in Bot.	3	M-F Th	3 4,5	FB 211 FB 316	Henrickson Henrickson
C114	Ecology, Lec. Ecology, Lab. Prereq: 6 credits in Bot.	3	M-Th By Appt.	2	FB 319 FB 319	McInteer McInteer
130	Intro. to Heredity Prereq: 4 credits in the biol. sciences.	3	M-S	3	FB 213	Riley
135	Plant Cytotaxonomy Prereq: Bot. 15 & 134 or their equivalents.	3	By Appt.		FB 213	Riley

CHEMISTRY

Lyle R. Dawson, Head of Department, Kastle Hall, 105A.

UPPER DIVISION REQUIREMENTS - Junior and Senior Years

Registration of juniors or seniors as majors in the Department of Chemistry is restricted to students having a grade-point average of 1.5 or more in all subjects exclusive of military training, except that this regulation may be set aside by action of the faculty of the Department.

Requirements in the Field of Concentration: Forty credits of advanced work in the field of Physical Sciences during the Junior and Senior years, including the major work.

Requirements for a Major. Prerequisites: 1a, 1b, 21a, 21b, and mathematics through the calculus. Required: 130a, 130b, 140a, 140b, 144a, 144b, 110a, 110b, 111, 133, 188a, 188b, and eleven credits to be chosen from the field of physical science.

LOWER DIVISION REQUIREMENTS - See Page 20

*1a	Gen. Chem., Lec.(MTThF	3	KH 201	Staff
*1a	Gen. Chem., Rec.(5	WS	3	KH 201	Staff
*1a	Gen. Chem., Lab. Prereq: proficiency in arith. & algebra		MWFS	4,5	KH 101	Staff
*1b	Gen. Chem., Lec.(MTThF	5	KH 201	Staff
*1b	Gen. Chem., Rec.(WS	5	KH 201	Staff
*1b	Gen. Chem., Lab.(5	MWF	2,3	KH 101	Staff
*1b	Gen. Chem., Lab. Prereq: 1a.		MW	4	KH 101	Staff
*4a	Gen. Chem. for Stud. in Agr. & (MTThF	3	KH 201	Staff
*4a	H. Ec., Lec. (
*4a	Gen. Chem. for Stud. in Agr. & (4	WS	3	KH 201	Staff
*4a	H. Ec., Rec. (
*4a	Gen. Chem. for Stud. in Agr. & (TTh	4,5	KH 101	Staff
*4a	H. Ec., Lab. (
*4b	Prereq: proficiency in arith. & algebra					
*4b	Gen. Chem. for Stud. in Agr. & (MTThF	2	KH 201	Staff
*4b	H. Ec., Lec. (
*4b	Gen. Chem. for Stud. in Agr. & (4	WS	2	KH 201	Staff
*4b	H. Ec., Rec. (
*4b	Gen. Chem. for Stud. in Agr. & (TTh	7,8	KH 101	Staff
*4b	H. Ec., Lab. (
*4b	Prereq: 4a.					
21a	Quant. Anal., Lec.(MTThF	1	KH 111	Stewart
21a	Quant. Anal., Lab.(5	MTThF	2,3,4	KH 113	Stewart
21a	Prereq: 1b or 2b					
21b	Quant. Anal., Lec.(MTThF	6	KH 111	Wagner
21b	Quant. Anal., Lab.(4	MTThF	7,8	KH 113	Wagner
21b	Prereq: 21a.					
30a	Organic Chem., Lec.(M-S	2	KH 214	Barkenbus
30a	Organic Chem., Lab.(5	MTThF	3,4	KH 215	Barkenbus
30a	Prereq: 1b or 2b					
30b	Organic Chem., Lec.(MTThF	6		
30b	(5	W	5,6	KH 209	Estes
30b	Organic Chem., Lab.(MTThF	7,8	KH 215	Estes
30b	Prereq: 30a.					

* Open to Freshmen

COLLEGE OF ARTS AND SCIENCES — Continued

Course Number	Subject	Credits	Days	Hour	Building and Room Number	Instructor
37	Organic Chem. (non-majors), Lec.(4	M-S	4	KH 209	Cavagnol
37	Organic Chem., Lab. Prereq: 1b, 2b, or 4b.	(TTh	5,6	KH 215	Cavagnol
<u>Courses open only to Upper Division & Graduate Students:</u>						
110a	Adv. Inorganic Chem. Prereq: Quant. Anal. and Organic Chem.	2	MTThF	2	KH B-14	Schreyer
115a	Nuclear Chem. Prereq: 140b.	2	MTThF	3	KH B-14	Leader
122	Instrumental Anal., Lec.(3	2 hrs. to be arr.		KH 205	Wagner
122	Instrumental Anal., Lab.(Prereq: 21b.		12 hrs. to be arr.		KH 115	Wagner
130a	Organic Chem., Lec. (5	M-S	2	KH 214	Barkenbus
130a	Organic Chem., Lab. (MTThF	3,4	KH 215	Barkenbus
	Prereq: 1b or 2b.					
130b	Organic Chem., Lec.(5	MTThF	6		
			W	5,6	KH 209	Estes
130b	Organic Chem., Lab.(MTThF	7,8	KH 215	Estes
	Prereq: 130a; minimum 5 students.					
133	Qual. Organic Anal., Lec. & Lab. Prereq: 30b or 130b.	3	18 hrs	By Appt.	KH 215	Barkenbus
181	Chemical Lit.	1	2 hrs.	By Appt.	KH 111	Stewart
<u>Courses open only to Graduate Students:</u>						
234a	The Electronic Theory as Appl. to Organic Reactions Prereq: 130b.	2	MTThF	3	KH 209	Estes
240	Electrochemistry Prereq: 140b.	3	M-S	5	KH 214	Leader
290a-L	Res. in Chem.	5 ea.	15 hrs.	By Appt.	KH Arr.	Staff
ECONOMICS						
Economics Majors see Professor L. H. Carter, College of Commerce						
<u>UPPER DIVISION REQUIREMENTS - Junior and Senior Years.</u>						
<u>Requirements in the Field of Concentration</u> Forty credits of advanced work in the field of Social Studies during the Junior and Senior years, including the Major work.						
<u>Requirements for a Major.</u> Prereq: Two courses in Economics, including Economics 51 and 52. Required: A minimum of 18 credits of advanced work in Economics, including Economics 102, 104, or 110, and 105, the remainder of credits to be selected from the Arts and Sciences list of Economics courses numbered above 100. In addition tutorial course 16 must be taken in the senior year to prepare for the required comprehensive examination.						
<u>LOWER DIVISION REQUIREMENTS - See Page 20</u>						
*2	Econ. Hist. of Eur.	3	M-S	3	WH 102	Jennings
*3	Econ. Hist. of the U. S	3	M-S	2	WH 103	Jennings
*7a	Prin. of Acctg., Rec.(4	M-Th	1	WH 306	Tolman
	Prin. of Acctg., Lab.(M-Th	2,3	WH 306	Tolman
*7b	Prin. of Acctg., Rec.(4	MTThF	4	WH 306	Miller
	Prin. of Acctg., Lab.(M-Th	5,6	WH 306	Miller
51	Prin. of Econ.	3	M-S	5	WH 102	Connor
52	Prin. of Econ.	3	M-S	4	WH 301	Tolman
<u>Courses open only to Upper Division & Graduate Students:</u>						
16	Tutorial Work in Econ.	1	By Appt.		WH 104	Carter
102	Labor Econ. Prereq: Econ. 52.	3	M-S	4	WH 102	Carter
104	Pub. Fin. Prereq: Econ. 52	3	M-S	2	SS 203	Hargreaves
105	Money & Bank. Prereq: Econ. 52	3	M-S	2	SS 228	Masten
107	Statistical Meth., Rec. & Lab.	3	M-Th	1,2	WH 401	Connor
112a-f	Indiv. Wk. in Econ.	1 ea.	By Appt.			Staff

* Open to Freshmen

COLLEGE OF ARTS AND SCIENCES — Continued

Course Number	Subject	Credits	Days	Hour	Building and Room Number	Instructor
155	Indus. Relations	3	M-S	2	WH 102	Carter
165	Compara. Econ. Systems	3	M-S	4	SS 129	Masten

Courses open only to Graduate Students:

202a-f	Seminar	1 ea.	By Appt.			Carpenter
204	Surv. of Econ. Theory Sin. the Austrian Sch.	3	M-S	4	SS 117	Hargreaves
211	Adv. Money & Banking	3	By Appt.		SS 126	Masten
218a	Econ. Theory	3	M-S	3	WH 103	Sullivan

EDUCATION

A student in the College of Arts and Sciences may elect toward the A.B. and B.S degree a total of 30 credits from other colleges of the University.

ENGINEERING

A student in the College of Arts and Sciences may elect toward the A.B. and B.S degree a total of 30 credits from other colleges of the University.

ENGLISH, SPEECH, AND DRAMATIC ARTS

W. S. Ward, Head of Department, Fine Arts Building, 109

UPPER DIVISION REQUIREMENTS - Junior and Senior Years

Requirements in the Field of Concentration: Forty credits of advanced work in the field of Literature, Philosophy, and the Arts, including the Major work.

Requirements for a Major. Prerequisites: English 1a, 1b; 3a, 3b. Required: A minimum of eighteen credits of advanced work in English.

LOWER DIVISION REQUIREMENTS - See Page 20

*1a-1	Eng. Comp.	3	M-S	2	McVH 203	
*1a-2	Eng. Comp.	3	M-S	3	FA 222	
*1a-3	Eng. Comp.	3	M-S	4	McVH 203	
*1b-1	Eng. Comp.	3	M-S	2	McVH 210	
*1b-2	Eng. Comp.	3	M-S	3	McVH 231	
*1b-3	Eng. Comp.	3	M-S	5	McVH 200	
3a	Surv. of Eng. Lit.	3	M-S	5	FA 224	Stroup
3b	Surv. of Eng. Lit.	3	M-S	4	FA 224	Shine
*6-1	The Essen. of Speech	3	M-S	2	FA 226	Robinson
*6-2	The Essen. of Speech	3	M-S	3	FA 226	Blyton
*6-3	The Essen. of Speech	3	M-S	4	FA 226	Sterrett
30-1	Bus. Eng.	2	MTThF	4	McVH 204	Cutler
30-2	Bus. Eng.	2	MTThF	2	McVH 231	Bigelow
*35	Stagecraft	2	MTThF	8	FA Guig. Shop.	Rhodes
38	Oral Interpretation	3	M-S	2	FA 218	Sterrett

Courses open only to Upper Division and Graduate Students:

101	Cur. Eng. Usage & Grammar	3	M-S	2	McVH 209	Cutler
104	Milton	3	M-S	3	FA 224	Stroup
110a	Shakespeare: The Comedies	3	M-S	5	McVH 203	Hatch
116	The Contemp. Drama	3	M-S	4	FA 222	Farquhar
C117	Workshop in Imaginative Writing	3	M-F	8	McVH 210	
123b	Am. Lit. after 1830	3	M-S	3	FA 218	Spivey
130b	Compara. Lit.	3	M-S	5	McVH 204	Brady
137	Stage Prod. in Sch. & Community	3	M-S	5	FA Lab.Th.	Briggs
148	A Gen. Intro. to Folklore	3	M-S	4	McVH 210	Jansen
152	The Age of Pope	3	M-S	2	McVH 200	Cooke
156a	The Mod. Am. Novel	3	M-S	5	McVH 231	Budd
157	Tchg. of Speech & Oral Eng.	3	M-S	4	FA 218	Blyton
165	The Lyric in Eng.	3	M-S	2	McVH 204	Moore
172	Writing the One-Act Play	3	M-F	7	FA 222	Robinson

Courses open only to Graduate Students:

206d	Seminar: Studies in the Eng. Romantic Period	3	M-S	3	McVH 200	Ward
------	--	---	-----	---	----------	------

* Open to Freshmen

COLLEGE OF ARTS AND SCIENCES — Continued

Course Number	Subject	Credits	Days	Hour	Building and Room Number	Instructor
210	Seminar: Bibliographical Studies	3	M-F	8	McVH 204	Brady
214b	Seminar: Studies in Victorian Lit. (The Major Poets)	3	M-F	7	KL 412	Shine

GEOGRAPHY

J. R. Schwendeman, Head of Department, Social Sciences, 226

UPPER DIVISION REQUIREMENTS - Junior and Senior Years

Requirements in the Field of Concentration: Forty credits, including the Major work in advanced courses in the field of Social Studies and certain closely allied physical science fields.

Requirements for a Major. Prerequisites: Geography 1, 2, 3a-b or 10. Requirements: A minimum of 18 credits of advanced work in Geography varied according to the curriculum elected by the student, but including at least three credits in Geography 132a-d.

Note--Six credits from the following courses will satisfy the lower division requirements in the social studies: History 4a,b, 5a,b, Political Science 51a,b, Sociology, Geography or Anthropology 3a and Sociology or Geography 3b.

LOWER DIVISION REQUIREMENTS - See Page 20

*3a	Societies Around the World	3	M-S	2	SS 231	Field
*10	Econ. Geog. Surv.	3	M-S	3	SS 228	Tuthill

Courses open only to Upper Division & Graduate Students:

101	Geog. of Ky.	2	M-Th	2	SS 229	Schwendeman
133b	Special Prob. Additional credit in Geog. 101	1	By Appt.		SS	Schwendeman
103	Regional Geog. of Eur.	2	M-Th	3	SS 229	Field
133d	Special Prob. Additional credit in Geog. 103	1	By Appt.		SS	Field
112	Conservation of Natural Resources	2	M-Th	4	SS 229	Tuthill
133i	Special Prob. Additional credit in Geog. 112	1	By Appt.		SS	Tuthill
140	Geographical Foundations of World Power	2	M-Th	1	SS 229	Schwendeman
132a,b,c,d	Indp. Work in Geog.(majors only)	3 ea.	By Appt.		SS 226	Staff
C-130	Regional Field Observation--Tour of Western Kentucky and report. (This class will assemble in Room 228 at 8 A.M. Tuesday June 12 and will devote the day to preparation and discussion of the tour. This tour will cover the natural regions, selected landscape and cultural features of Western Kentucky. Points on the itinerary include Bardstown, Mammoth Cave, Bowling Green, Kentucky Lake, Wickliffe, Paducah, and Louisville. Write to the Geography Department, University of Kentucky for particulars.)	2	(Tuesday June 12 to Monday June 18 inclusive. Note-- class work of the summer session begins Wed., June 20.)			Schwendeman
C-130	Regional Field Observation--Tour of Eastern Kentucky and report. (This tour will occur over one of the week-ends of the regular session Friday through Tuesday for those who can arrange their schedules to take it. Points will include Ashland, the Big Sandy, Dewey Reservoir, Pine Mountain, Cumberland Gap, Cumberland Falls, Cumberland National Forest, Herrington Lake. For particulars write Geography Department, University of Kentucky.)	1				Schwendeman
130	Regional Field Observation--Tour of Mexico. (This regional field group will leave for Mexico Friday morning, August 10 and will return Tuesday, September 4. Credit will be based upon preliminary reading, field work and written report. All expense cost of the tour will be about \$295.00. This does not include the Registration fee for credit. A special folder will be sent upon request by writing to the Geography Department.)	3				Schwendeman

GEOLOGY

A. C. McFarlan, Head of Department, Miller Hall, 209

UPPER DIVISION REQUIREMENTS - Junior and Senior Years

Requirements in the Field of Concentration: Forty credits in the field of Physical

* Open to Freshmen

COLLEGE OF ARTS AND SCIENCES — Continued

Course Number	Subject	Credits	Days	Hour	Building and Room Number	Instructor
---------------	---------	---------	------	------	--------------------------	------------

and Biological Sciences, including the Major work, in courses not open to freshmen.

Requirements for a Major: Geology 10a,b; 30a,b; 101a,b; 112; 107a,b; 123a,b; 126a,b; 118a or 118b and 129, 130. Field work: A summer field course, Geology 118a-d, is required of major students for graduation. Local field work is offered throughout the year.

LOWER DIVISION REQUIREMENTS - See Page 20

*3	Elem. Geology	3	M-Th	2	MH 108	Brown
*3-11	Lab. Conf.		MW	3	MH 101A	Brown
*3-12	Lab. Conf.		TTh	4	MH 101A	Brown
*3-13	Lab. Conf.		MW	4	MH 101A	Brown
12a	Elem. Geol. for Engr.	3	MTh	2	MH 108	Brown
12a-11	Lab. Conf.		MW	3	MH 101A	Brown
12a-12	Lab. Conf.		TTh	4	MH 101A	Brown
12a-13	Lab. Conf.		TTh	4	MH 101A	Brown
*50a	Outlines of Geol.	3	M-S	3	MH 108	Fisher
*50b	Outlines of Geol.	3	M-S	4	MH 108	Fisher

Field Camp in Colorado

23a,b†	Elem. Field Wk. in Regional Geol.	6 ea.	June 18 to Aug. 11			McFarlan Nelson Stokley
--------	-----------------------------------	-------	--------------------	--	--	-------------------------------

Courses open only to Upper Division and Graduate Students:

118a,b†	Field Wk. in Regional Geol.	8 ea.	June 18 to Aug. 11			McFarlan Nelson Stokley
C118a,b†	Field Wk. in Regional Geol.	6 ea.	June 18 to Aug. 11			McFarlan Nelson Stokley

GERMAN LANGUAGE AND LITERATURE

A. E. Bigge, Head of Department, Miller, 303-A

UPPER DIVISION REQUIREMENTS - Junior and Senior Years

Requirements in the Field of Concentration: Forty credits in the field of Literature, Philosophy, and the Arts, including the Major work, in courses not open to freshmen.

Requirements for a Major. Prerequisites: Junior standing, 1a, 1b, 2a, 2b. Required: A minimum of 18 credits of work independent of Junior and Senior Tutorial Courses. Majors must also pass a final comprehensive examination.

Note: No credit will be given for German 1a until German 1b has been completed. No student should enroll in two beginning language courses at the same time. A student who presents 1 unit of high school foreign language will receive credit for the first year of college work if repeated. A student who presents 2 units of high school foreign language will receive credit provided he makes at least a B standing in these two courses.

All appointment students will meet in Room 303-A, Miller Hall, at 2:00 on Wednesday, June 20.

LOWER DIVISION REQUIREMENTS - See Page 20

*1a-1	Elem. Ger.	3	M-S	2	MH 310	Ubben
*1a-2	Elem. Ger.	3	M-S	4	MH 302	Whitaker
*1b-1	Simple Read. & Pronun. Prereq: 1a or 1 HS unit	3	M-S	2	MH 310	Ubben
*1b-2	Simple Read. & Pronun. Prereq: 1a or 1 HS unit	3	M-S	4	MH 302	Whitaker
2a	Translation & Rapid Reading Prereq: 1b	3	M-S	3	MH 310	Bigge
2b	Translation & Rapid Reading Prereq: 2a	3	M-S	3	MH 310	Bigge
8	Elem. Aural-Oral Pract. Prereq: 1a & Instruc.'s permission	1	T-F	4	MH 310	Staff

* Open to Freshmen

† See special announcement

COLLEGE OF ARTS AND SCIENCES — Continued

Course Number	Subject	Credits	Days	Hour	Building and Room Number	Instructor
10a,b	Elem. Conversation & Comp. Prereq: 1b, 10a	3 ea.	M-S	4	MH 308	Ubben
20a,b	Readings in Med. Ger. Prereq: 1b, 20a	3 ea.	M-S	1	MH 302	Ubben
21a,b	Readings in Chem. Ger. Prereq: 1b, 21a	3 ea.	M-S	3	MH 306B	Binger
52	Intro. to Classical & 19th Cent. Ger. Lit. Prereq: 2b	3	M-S	4	MH 303A	Bigge
75	Surv. of Ger. Lit. in Eng. Translation	2	MTThF	2	MH 302	Hegeman

Courses open only to Upper Division & Graduate Students:

105a-f	Indp. Work in Ger.	3 ea.	By Appt.		MH	Staff
106a,b	Adv. Scientific Ger. Prereq: 20b or 21b	3 ea.	By Appt.		MH	Whitaker

Courses open only to Graduate Students:

206	The Age of Goethe Prereq: 6 sem. of Ger.	3	By Appt.		MH	Hegeman
-----	---	---	----------	--	----	---------

HISTORY

Thomas D. Clark, Head of Department, Frazee, 203

UPPER DIVISION REQUIREMENTS - Junior and Senior Years

Requirements in the Field of Concentration: Forty semester hours of advanced work in the field of social or humanistic studies, during the Junior and Senior years, including the Major work.

Requirements for a Major. Prerequisites: History 2a,b; or 4a and 4b; or 5a and 5b. Required: A minimum of 18 semester hours of advanced courses in History plus the Senior Seminar.

Note-- Six credits from the following courses will satisfy the lower division requirements in the social studies: History 5a,b, 4a,b; Sociology, Geography or Anthropology 3a and Sociology or Geography 3b, Political Science 51a,b.

LOWER DIVISION REQUIREMENTS - See Page 20

*4a	Mod. Eur. to the Fr. Rev.	3	M-S	1	FH 204	Lunde
*4b	Mod. Eur. since the Fr. Rev.	3	M-S	2	FH 204	McCloy
*5a-1	Hist. of the U.S. thru 1865	3	M-S	2	FH 201	Taylor
*5a-2	Hist. of the U.S. thru 1865	3	M-S	3	FH 201	Gilliam
*5a-3	Hist. of the U.S. thru 1865	3	M-S	4	FH 302	Wall
*5a-4	Hist. of the U.S. thru 1865	3	M-S	5	FH 202	Gilliam
*5b-1	Hist. of the U.S. since 1865	3	M-S	1	FH 202	England
*5b-2	Hist. of the U.S. since 1865	3	M-S	4	FH 202	Hopkins
40	Hist. of Ky.	3	M-S	3	FH 202	Clark

Courses open only to Upper Division & Graduate Students:

100b	Diplomacy & Foreign Policy of the U.S. since 1898	3	M-S	5	FH 201	Hopkins
105b	The Am. Revolution, 1763-89	3	M-S	4	FH 301	Taylor
120	Eur. in the 20th Cent.	3	Open only to students taking "Perspectives in Contemp. Life" See page 34			
147	Recent Hist. of the U.S.	3	M-S	1	FH 201	Wall
151a	The Am. Frontier	3	M-S	4	FH 201	Clark
171	Eur. in the 18th Century	3	M-S	3	FH 204	Lunde
180a	Hist. of the Old South	3	M-S	2	FH 202	Kirwan

Courses open only to Graduate Students:

280	European Historiography	3	MW	9,10	FH 204	McCloy
315a	Henry Clay & His Times	3	TTh	7,8	FH 201	England

* Open to Freshmen

COLLEGE OF ARTS AND SCIENCES — Continued

Course Number	Subject	Credits	Days	Hour	Building and Room Number	Instructor
HOME ECONOMICS						
A student in the College of Arts and Sciences may elect toward the A.B. and B.S. degree a total of 30 credits from other colleges of the University.						
HUMANITIES						
G. K. Brady, Chairman, McVey Hall, 219						
To satisfy the lower division requirements in the Humanities, students in the College of Arts and Sciences must earn four credits in literature and philosophy (Humanities A, B, or C) and two credits in Art and Music (Humanities D or E). These courses should be taken during the sophomore year, and two courses from A, B, or C may not be taken simultaneously.						
A-1	Classicism. Graeco-Roman; Mod. European	2	MTThF	2	FH 205	Kuiper
A-2	Classicism: Graeco-Roman; Mod. European	2	MTThF	3	McVH 204	Bigelow
B-1	The Renaiss: Romanticism	2	MTThF	3	MH 302	Hegeman
B-2	The Renaiss: Romanticism	2	MTThF	4	MH 307	Eilersten
C-1	Realism & Naturalism: The Contemp.	2	MTThF	4	McVH 200	Ward
C-2	Realism & Naturalism: The Contemp.	2	MTThF	5	McVH 210	Bigelow
D	Art: The Renaiss. to the Present	2	MTThF	3	FA 208	Rannells
E	Music: The Renaiss. to the Present	2	M-F	4	FA 6	Prindl

HYGIENE AND PUBLIC HEALTH

Dr. J. S. Chambers, Head of Department, Health Building, 105

UPPER DIVISION REQUIREMENTS - Junior and Senior Years

Requirements in the Field of Concentration: Forty credits in the field of Biological Sciences and Social Studies (Soc., Social Work, Psy., Political Science) including the Major work, in courses not open to Freshmen.

Requirements for a Major. Prerequisites: Twelve credits in the Biological Sciences. Required: A minimum of 15 credits of advanced work in Hyg. & Pub. Hlth.

LOWER DIVISION REQUIREMENTS - See Page 20

*9	Fund. of Hlth.	2	M-Th	3	FB B-8	Hamilton
<u>Courses open only to Upper Division & Graduate Students.</u>						
100a	Pub. Hlth.	3	M-S	4	FB B-3	Hamilton
100b	Pub. Hlth.	3	M-S	3	FB B-3	Heinz
110	Hlth. Ed.	3	M-S	5	FB B-8	Heinz
111a,b,c,d	Indp. Work in Hyg. & Pub. Hlth.	3 ea.	By Appt.		HB 104	Heinz

JOURNALISM

Niel Plummer, Head of Department, Journalism

UPPER DIVISION REQUIREMENTS - Junior and Senior Years

Requirements in the Field of Concentration: Forty semester hours in courses not open to Freshmen, including Major Work, in either the field of Social Studies or that of Literature, Philosophy, and the Arts, during Junior and Senior years.

Requirements for a Major. Prerequisites: Journalism 2, 21, and 22. Required: Journalism 100a,b, 101, 105, 106, 107, 108, 109, 114, 123 and 127. The Degree of A.B. in Journalism. Four sequences leading to the degree of A.B. in Journalism are outlined in the general catalog.

Comprehensive Examinations. Majors and candidates for the degree in Journalism are required to pass a final comprehensive examination at the end of the Senior year.

LOWER DIVISION REQUIREMENTS - See Page 20

10	Surv of Jour.	3	M-S	3	J 112	McLaughlin
21	Etymology	3	MWF	1-2:40	J 113	Plummer

* Open to Freshmen

COLLEGE OF ARTS AND SCIENCES — Continued

Course Number	Subject	Credits	Days	Hour	Building and Room Number	Instructor
<u>Courses open only to Upper Division & Graduate Students:</u>						
100b	News Reporting	3	M-S	4	J 113	McCauley
105	Law of the Press	2	M-Th	5	J 112	Plummer
106	Influence of the Newspaper	3	Open only to students taking "Perspectives in Contemp. Life". See page 34			
110	Supervision of High School Publications	3	M-S	3	J 113	Portmann
112	Critical Writing for the Press	3	M-S	4	J 112	McLaughlin
114	Newspaper Advg. & Promotion	3	M-S	2	J 112	Portmann
118	Publicity	3	M-S	5	J 113	McCauley

LAW

A student in the College of Arts and Sciences may elect toward the A.B. degree a total of 30 credits from other colleges of the University. However, election of law courses is restricted.

A 1.3 standing on all work attempted is required to enter the College of Law; a standing of 1.0 is required on the professional work on the combined Arts-Law degree. For the combined Arts-Law course see the University Catalog for requirements. A student must have a total of 128 credits for the A.B. degree.

LIBRARY SCIENCE

Leslie J Poste, Head of Department, King Library, 416

UPPER DIVISION REQUIREMENTS - Junior and Senior Years

Requirements in Field of Concentration: Forty credits of advanced work in the field of Literature, Philosophy, and the Arts, or acceptable equivalent, including the Major work.

Requirements for a Major. Prerequisites: Junior or Senior standing, with average scholastic record for the first two college years. Prospective majors should consult with the Head of the Department regarding courses to be taken during the first two years of college. A broad academic program is recommended. Required: A minimum of 21 semester hours.

LOWER DIVISION REQUIREMENTS - See Page 20

Courses open only to Upper Division & Graduate Students:

101a,b,c,d	Indp. Work	1 ea.	By Appt.		KL 313	Staff
110	The Library in the Sch.	3	M-F	9	KL 314	Martin
121	Intro. to Library Work	3	M-F	9	KL 416	
127a	Bks. & Related Mat. for Children & Young People	3	M-S	5	KL 314	
129	Cataloging & Classification	3	M-S	3	KL 314	Smith
133a	Reference & Bibliography	3	M-S	2	KL 314	Poste
133b	Reference & Bibliography	3	M-F	10	KL 314	Poste
139	Library Practice	3	To be arranged			Roser
145	Org. of Library Mats.	3	M-F	7	KL 314	Smith
152	Bk. Select.	3	M-S	4	KL 314	Martin

Courses open only to Graduate Students:

214	The Coll. & University Library	2	MTThF	6	KL 314	Whitten
229	Adv Cataloging & Classification	3	M-F	8	KL 314	Whitten

MATHEMATICS AND ASTRONOMY

H. H. Downing, Head of Department, McVey, 121

UPPER DIVISION REQUIREMENTS - Junior and Senior Years

Requirements in the Field of Concentration: Forty credits of advanced work in the field of Physical Sciences during the Junior and Senior years, including the Major work.

Requirements for a Major. Prerequisites: Mathematics and Astronomy 2,5 or 17,18,19, 20a,20b. Required: A minimum of 18 credits of advanced work in mathematics, including Mathematics and Astronomy 25,26,27 and one course in Applications.

* Open to Freshmen

COLLEGE OF ARTS AND SCIENCES — Continued

Course Number	Subject	Credits	Days	Hour	Building and Room Number	Instructor
---------------	---------	---------	------	------	--------------------------	------------

Requirements for Graduate Work: Graduate students must have had at least 12 credits of mathematics beyond integral calculus before counting work toward an advanced degree.

LOWER DIVISION REQUIREMENTS - See Page 20

*1-1	Basic Math.	3	M-S	1	McVH 100	
*1-2	Basic Math.	3	M-S	4	McVH 104	
	Prereq. for 2: 1 unit high school plane geometry					
*2	Solid Geom.	3	M-S	5	McVH 104	
	Prereq. for 5: M&A 1 or score of F or G on University Placement Test					
*5	Coll. Algebra	5	M-F	4,5	McVH 106	
	Prereq. for 15: M&A 5 or 17					
*15	Math. of Finance	3	M-S	3	McVH 100	
	Prereq. for 17: 1 unit high school algebra and score of E on University Placement Test					
*17	Coll. Algebra	3	M-S	3	McVH 109	Leser
	Prereq. for 18: 1 unit high school plane geometry, and M&A 5 or score E on University Placement Test					
*18	Plane Trig.	3	M-S	2	McVH 100	Pence, Goodman
	Prereq. for 19: M&A 5 or 17 and 18					
*19-1	Plane Analytic Geom.	3	M-S	2	McVH 106	South, Ward
*19-2	Plane Analytic Geom.	3	M-S	3	McVH 104	Davis, Cowling
	Prereq. for 20a: M&A 2 and 19					
20a	Diff. Calc.	4	M-S	1	McVH 107	Brown
			T, F	4	McVH 107	Brown
	Prereq. for 20b: 20a					
20b	Int. Calc.	4	M-S	5	McVH 109	Leser
			TTh	6	McVH 109	Leser

Courses open only to Upper Division & Graduate Students:

C105a	Prereq. for C105a: M&A 20b Diff. Equa.	2	MTThF	5	McVH 107	Brown
-------	---	---	-------	---	----------	-------

Consult the instructor for prerequisites for the following courses:

25	Intermed. Calc.	3	M-S	4	McVH 104	Davis
101a-f	Indp. Work in Math.	3 ea.	By Appt.			Staff
103	Theory of Equas.	3	M-S	3	McVH 103	Goodman
106b	Adv. Calc.	3	M-S	1	McVH 104	Downing
119	Coll. Geom.	3	M-S	4	McVH 100	Pence, Downing
132	The Calc. of Finite Differences	3	M-S	3	McVH 106	South
141	Intro. to Theory of Numbers	3	M-S	4	McVH 103	Ward

Courses open only to Graduate Students:

201a-f	Indp. Work in Math.	3 ea.	By Appt.			Senior Staff
223	Int. Equas.	3				
500-1	Thesis	0	By Appt.			Senior Staff
500-2	Thesis	0	By Appt.			Senior Staff
500-3	Thesis	0	By Appt.			Senior Staff

ASTRONOMY

Observatory - open house	0	M	8-9:30 P.M.	Observer.	Davis
--------------------------	---	---	-------------	-----------	-------

MILITARY SCIENCE

Head of Department: Colonel G. T. Mackenzie, Infantry, U.S. Army, Barker Hall, 101

*1a-3	M.S. I (ROTC)	2	M-Th	3	BH 107	Staff
*1a-4	M.S. I (ROTC)	2	M-Th	4	BH 107	Staff

MUSIC

Edwin E. Stein, Head of Department, Fine Arts, 16a

UPPER DIVISION REQUIREMENTS - Junior and Senior Years

Requirements in the Field of Concentration: Forty semester hours of advanced work in the field of Literature, Philosophy, and the Arts during the Junior and Senior years

* Open to Freshmen

COLLEGE OF ARTS AND SCIENCES — Continued

Course Number	Subject	Credits	Days	Hour	Building and Room Number	Instructor
---------------	---------	---------	------	------	--------------------------	------------

including the Major work.

Requirements for a Major. Prerequisites: Junior standing: Humanities E, Music 11a,b; 33a,b; 34a,b; Applied Music - 8 to 12 semester hours. Required: A minimum of 30 semester hours of advanced work in music as prescribed by the Department of Music. All Music Majors are required to take part in two performing organizations each semester. A comprehensive is required in the Senior year.

Fees for Applied Music: All applied music (piano, voice, organ, instrumental) requires a fee of \$25 for two one-half hour lessons per week. Practice room fee is \$6 per summer term. Rental of instruments for use in Music 46 courses is \$3 per summer term per course. Rental of orchestral or band instruments for other instruction is \$6 per term, payable by veterans and non-veterans. All fees are due before instruction begins at the beginning of the Summer term.

Note--Enrollment fee for non-University students (in addition to the above fees) is \$5.25 per credit hour.

LOWER DIVISION REQUIREMENTS - See Page 20

*4a	Pub. Sch. Music (for non-music Majors)	2	M-Th	4	FA 4	Worrel
*4b	Pub. Sch. Music (for non-music Majors)	2	M-Th	4	FA 2	Lewis
*22a,b	Band (Freshmen)	2 ea.	MW	9,10	FA 22	Lutz
23a,b	Band (Sophomores)	2 ea.	MW	9,10	FA 22	Lutz
28a,b	Concert Band (Juniors)	2 ea.	MW	9,10	FA 22	Lutz
29a,b	Concert Band (Seniors)	2 ea.	MW	9,10	FA 22	Lutz
*40a-h	Orchestra	1 ea.	T-Th	9,10	FA 22	Stein
*46a	Class Instruct. in Violin	1	By Appt.		FA 22	Rabin
*46g	Class Instruct. in Cello	1	By Appt.		FA 27	Kinney
*46h	Class Instruct. in Oboe	1	By Appt.		FA 18	Lutz
*46L	Class Instruct. in Trombone	1	By Appt.		FA 33	Prindl
*49a-h	University Chorus	1 ea.	M-Th	8	FA 17	Lewis
*15a-q	Appl. Music - Piano	2 ea.	By Appt.		FA 147 FA 145 FA 149	Patch Montgomery Cullis
*C15a-q	Appl. Music - Piano	1 ea.	By Appt.		FA 147 FA 145 FA 149	Patch Montgomery Cullis
*16a-L	Appl. Music - Strings	2 ea.	By Appt.		FA 29 FA 27 FA 25	Wright Kinney Rabin
*C16a-L	Appl. Music - Strings	1 ea.	By Appt.		FA 29 FA 27 FA 25	Wright Kinney Rabin
*17a-L	Appl. Music - Voice	2 ea.	By Appt.		FA 139 FA 141	Hamilton Kiviniemi
*C17a-L	Appl. Music - Voice	1 ea.	By Appt.		FA 139 FA 141	Hamilton Kiviniemi
*18a-L	Appl. Music - Organ	2 ea.	By Appt.		FA 128	Blackburn
*C18a-L	Appl. Music - Organ	1 ea.	By Appt.		FA 128	Blackburn
*31a-L	Appl. Music - Woodwind Instruments	2 ea.	By Appt.		FA 20a FA 16	Lutz Stein
*C31a-L	Appl. Music - Woodwind Instruments	1 ea.	By Appt.		FA 20a FA 16	Lutz Stein
*32a-L	Appl. Music - Brass & Percussion Inst.	2 ea.	By Appt.		FA 33a FA 31	Prindl Worrel
*C32a-L	Appl. Music - Brass & Percussion Inst.	1 ea.	By Appt.		FA 33a FA 31	Prindl Worrel

Courses open only to Upper Division & Graduate Students:

102a	Vocal Pedagogy	2	M-Th	4	FA 141	Kiviniemi
103b	Piano Pedagogy	1	MW	2	FA 145	Montgomery
106b	Piano Lit.	2	M-Th	3	FA 147	Patch
107b	Vocal Lit.	2	M-Th	5	FA 139	Hamilton
108b	Hist. & Lit. of the Organ	2	M-Th	7	FA 128	Blackburn
110	Res. Prob. in Pedagogy of Theory	2	By Appt.			Kinney
112	Res. Prob. in Music (Opera Workshop)	2	M-Th	8	FA 6	Kiviniemi

* Open to Freshmen

COLLEGE OF ARTS AND SCIENCES — Continued

Course Number	Subject	Credits	Days	Hour	Building and Room Number	Instructor
115b	Choral Conducting	2	M-Th	7	FA 4	Lewis
117b	Orchestration	2	M-Th	2	FA 2	Kinney
118	Marching Band Techn.	2	M-Th	5	FA 18	Lutz
120a	Surv. of Music Lit. (for non-music majors)	2	M-Th	3	FA 6	Rabin
145	Gen. Supervision of Music	2	M-Th	3	FA 4	Lewis
<u>Courses open only to Graduate Students:</u>						
204	Adv. Band Techn.	2	M-Th	2	FA 33	Prindl
208a,b,c	Seminar in Music	1 ea.	By Appt.		FA 20	Worrel
210	Baroque Music	2	By Appt.		FA 29	Wright
214	Adv. Instrumental Conducting	2	By Appt.		FA 25	Rabin
215a,b,c,d	Appl. Music - Piano	2 ea.	By Appt.		FA 147 FA 145	Patch Montgomery
C215						
a,b,c,d	Appl. Music - Piano	1 ea.	By Appt.		FA 147 FA 145	Patch Montgomery
216a,b,c,d	Appl. Music - Strings	2 ea.	By Appt.		FA 29 FA 27 FA 25	Wright Kinney Rabin
C216						
a,b,c,d	Appl. Music - Strings	1 ea.	By Appt.		FA 29 FA 27 FA 25	Wright Kinney Rabin
217a,b,c,d	Appl. Music - Voice	2 ea.	By Appt.		FA 139 FA 141	Hamilton Kiviniemi
C217						
a,b,c,d	Appl. Music - Voice	1 ea.	By Appt.		FA 139 FA 141	Hamilton Kiviniemi
218a,b,c,d	Appl. Music - Organ	2 ea.	By Appt.		FA 128	Blackburn
C218						
a,b,c,d	Appl. Music - Organ	1 ea.	By Appt.		FA 128	Blackburn
232a,b,c,d	Appl. Music - Brass & Percussion	2 ea.	By Appt.		FA 33a FA 31	Prindl Worrel
C232						
a,b,c,d	Appl. Music - Brass & Percussion	1 ea.	By Appt.		FA 33a FA 31	Prindl Worrel
See Education College for the following:						
Ed.251	Prob. in Pub. Sch. & Community Music	2	By Appt.		FA 31	Worrel
Ed.253	Indp. Work in Music Ed.	2	By Appt.		FA 31	Worrel
PHILOSOPHY						
John Kuiper, Head of Department, Frazee, 103						
<u>UPPER DIVISION REQUIREMENTS - Junior and Senior Years</u>						
Requirements in the Field of Concentration: Forty credits in courses not open to Freshmen, which may be elected in either the field of Literature, Philosophy and the Arts, or the field of Social Studies.						
Requirements for a Major. Prerequisites: Six credits in Philosophy including Philosophy 21. Required: A minimum of 15 credits in Philosophy; Philosophy 35a,b; and a comprehensive examination in the senior year.						
<u>LOWER DIVISION REQUIREMENTS - See Page 20</u>						
21	Intro. to Phil.	3	M-S	5	FH 205	Melzer
31	Elem. Logic	3	M-S	3	FH 205	Melzer
35a,b,c,d	Tutorial Work in Phil.	1 ea.	By Appt.		FH 103	Kuiper
<u>Courses open only to Upper Division & Graduate Students:</u>						
120	Great Religions of the World	3	(Open only to students taking "Perspectives in Contemp. Life". See page 34)			
190	Prob. of Phil.	3	M-S	4	FH 205	Kuiper
<u>Courses open only to Graduate Students:</u>						
220a,b,c,d	Res. in Phil.	3 ea.	By Appt.		FH 103	Staff

* Open to Freshmen

COLLEGE OF ARTS AND SCIENCES — Continued

Course Number	Subject	Credits	Days	Hour	Building and Room Number	Instructor
---------------	---------	---------	------	------	--------------------------	------------

PHYSICAL EDUCATION

Don Cash Seaton, Head of Department, Alumni Gym

SERVICE (Required) COURSES:

Undergraduate students who have not completed the physical education requirements must enroll in one of the following courses:

- A. Orientation in Physical Education (P.E. 1)-for new students. (not offered in summer).
- B. Adapted Physical Education (P.E. 2)-for students assigned to corrective work by the Health Department and for women students who failed the posture test. (not offered in summer.)
- C. Weightlifting and Conditioning (P.E. 29)-for men students who failed the physical fitness test in P.E. 1. (not offered in summer)
- D. Sports Classes (P.E. 3-28)-for students who have satisfied the requirements in A, B, or C. (Men students are expected to learn one indoor individual sport, one outdoor individual sport, and one team sport. Women students are expected to learn one individual sport, one team sport, and some form of the dance.)

LOWER DIVISION REQUIREMENTS - See Page 20

*5	Badminton (men & women)	0	MWF	7,8	AG	Johnson
*10-1	Folk Dancing (men & women)	0	MW	9,10	WG	
*11	Golf (men & women)	0	MWF	7,8	AG	Seaton
*15	Horseback Riding (men & women)	0	By Appt.		AG	Ryen
*16	Horsemanship (men & women)	1	By Appt.		AG	Ryen
*21-1	Swimming for Beginners (men & women)	0	M-F	4	Pool	Poe
*21-2	Swimming for Beginners (men & women)	0	M-F	5	Pool	Johnson
*22	Adv. Swimming (men & women)	1	M-F	8	Pool	Reece
*24	Tennis (men & women)	0	MWF	10,11	Courts	
*25	Volleyball (men & women)	0	M-F	6	AG	McCubbin

Recreation (including Instruction) for Students, Staff & Faculty:

Archery	0	W	3-5	WG	Carr
Folk Dancing	0	Th	7:30-10	WG	
Golf (faculty & staff)	0	T	1-3	AG	Seaton
Horseback Riding	0	By Appt.		AG	Ryen
Social Dancing	0	T	7:30-10	WG	
Swimming (men & women)	0	M-S	3-5	Pool	Staff
Swimming, Children (faculty, staff & student)	0	M-S	8-10	Pool	Reece
Tennis	0	M-S	8-6	Courts	Staff
Volleyball	0	MWF	12-1:30	AG	McCubbin

PROFESSIONAL COURSES

LOWER DIVISION REQUIREMENTS - See Page 20

UPPER DIVISION REQUIREMENTS - Junior and Senior Years

Requirements in the Field of Concentration: Forty credits of advanced work in the field of Biological Sciences, including the Major work.

Requirements for a Major. Prerequisites: For Men and Women - Anatomy and Physiology 4 and 5; Zoology 1; Sociology 3a or b; English 32, 6; Hygiene 9; Physical Education 40,51. For Men - Physical Education 41, 42, 43, 45, 56. For Women - Hygiene 7; Physical Education 46, 47, 49, 57, 90. Required: For Men and Women - Home Economics 101; Hygiene 110; Physical Education 61, 62a, b, 52, 70,80,140,143,165,172,180. For Women - Physical Education 53, 190. (For teaching certificate: Education 16, 60, for women; P.E. 144 for men; Education 105, C147, 169a, b. Only 6 hours of Education count in Field of Concentration in A&S.)

48	Indiv. Sports for Men	2	M-Th	4,5	AG	Seaton
51	Co-Recreational Activities	3	M-F	1,2	AG	Carr, Mackey, & McCubbin

* Open to Freshmen

COLLEGE OF ARTS AND SCIENCES — Continued

Course Number	Subject	Credits	Days	Hour	Building and Room Number	Instructor
52	Swimming & Diving for Men	2	M-Th	6,7	Pool	Poe
53	Swimming & Diving for Women	2	M-Th	6,7	Pool	Poe
81	Camp Leadership	2	By Appt.		AG	Kauffman & Perbix
C90	Folk, Tap & Social Dance (Workshop, two weeks †)	2	By Appt.			
<u>Courses open only to Upper Division & Graduate Students:</u>						
60-1	Phy. Ed. In the Elem. Sch.	3	M-S	3	WG	Perbix
60-2	Phy. Ed. In the Elem. Sch.	3	M-S	4	WG	Perbix
140	Org. & Adm. of Phy. Ed.	3	M-S	4	AG 106	Clay
142	Coaching Adv. Football	2	M-Th	7,8	AG 9	McCubbin & Bryant
143	Hist. & Prin. of Phy. Ed.	3	M-S	1	AG 106	Hackensmith
144	Phy. Ed. in the Sec. Sch.	3	M-S	2 & Appt.	WG	Carr
154	Adv. Aquatics (for Men)	1	M-Th	3	Pool	Reece
155	Adv. Aquatics (for Women)	1	M-Th	3	Pool	Reece
158b	Sports Officiating for Men	1	M-Th	4	AG 9	Johnson
For Ed. 169a,b - Student Teaching, see College of Education						
172	Kinesiology	3	M-S	5	AG 106	
181	Camping in Ed.	2	M-Th	2	AG 2	Kauffman
<u>Courses open only to Graduate Students:</u>						
240	Grad. Seminar in P.E.	2	By Appt.		WG	Carr
242	Prob. Course in Phy. Ed.	3	By Appt.		AG 4	Seaton
244	Tests & Measurements in Health & P.E.	3	M-S	2	AG 106	Hackensmith
243	Prob. in the Adm. of Athletics	2	M-Th	3	AG 106	Clay
280	Prob. in Recreation	2	By Appt.		AG 2	Kauffman
- PHYSICS						
Wm. S. Webb, Head of Department, Pence Hall 101						
<u>UPPER DIVISION REQUIREMENTS - Junior and Senior Years</u>						
<u>Requirements in the Field of Concentration:</u> Forty credits of advanced work in the field of Physical Sciences, including the Major work.						
<u>Requirements for a Major. Prerequisites:</u> Physics 3a, 3b, Mathematics 17, 18, and 19. <u>Required:</u> Mathematics 20a, 20b; a minimum of 19 credits of advanced work in Physics, including at least two advanced laboratory courses; and a comprehensive examination in the senior year.						
<u>LOWER DIVISION REQUIREMENTS - See Page 20</u>						
1a-1	Gen. Elem. Phys., Lec.(TF	1	Pence 201	
1a-1	Gen. Elem. Phys., Rec.(5	M-S	2	Pence 309	
1a-11	Gen. Elem. Phys., Lab.(MWThS	1	Pence 305	
Prereq: High School Alg. & Geom.						
1b-1	Gen. Elem. Phys., Lec.(MTh	4	Pence 201	
1b-1	Gen. Elem. Phys., Rec.(5	M-S	3	Pence 309	
1b-11	Gen. Elem. Phys., Lab.(TWFS	4	Pence 307	
Prereq: Physics 1a or equiv.						
3a-1	Gen. Col. Phys., Lec.(TF	3	Pence 201	
3a-1	Gen. Col. Phys., Rec.(6	M-S	2	Pence 208	
3a-11	Gen. Col. Phys., Lab.(MWThS	3,4	Pence 105	
Prereq: Math. 19; Chem. 1b						
3b-1	Gen. Col. Phys., Lec.(MTh	2	Pence 201	
3b-1	Gen. Col. Phys., Rec.(6	M-S	3	Pence 103	
3b-11	Gen. Col. Phys., Lab.(TWFS	1,2	Pence 107	
Prereq: Physics 3a or Equiv.						
<u>Courses open only to Upper Division & Graduate Students:</u>						
C104	Theoretical Mech.	3	M-S	2	Pence 103	
130	Exper. Phys. Spectroscopy	2	MTThF	7,8	Pence 9	

† Not open to P.E. Majors for credit

COLLEGE OF ARTS AND SCIENCES — Continued

Course Number	Subject	Credits	Days	Hour	Building and Room Number	Instructor
---------------	---------	---------	------	------	--------------------------	------------

Courses open only to Graduate Students:

212	Conduct. of Elect. through Gases	3	M-S	5	Pence 103	
-----	----------------------------------	---	-----	---	-----------	--

Other Advanced or Graduate Courses will be offered if demand for them arises.

POLITICAL SCIENCE

Amry Vandenbosch, Head of Department, Social Sciences, 105

UPPER DIVISION REQUIREMENTS - Junior and Senior Years

Requirements in the Field of Concentration: Forty credits of advanced work in the field of Social Studies, during the Junior and Senior years, including the Major work.

Requirements for a Major. Prerequisites: Political Science 51a and 51b or Economics 1. Required: At least one course in each of four fields of Political Science, including one course in Constitutional Development and one in Political Theory; Political Science 190; Minimum of 15 credits of advanced work in Political Science; and a comprehensive examination in the Senior year.

LOWER DIVISION REQUIREMENTS - See Page 20

Note--Six credits from the following courses will satisfy the lower division requirements in the social studies: History 4a,b, 5a,b, Political Science 51a,b, Sociology, Geography or Anthropology 3a and Sociology or Geography 3b.

*51a-1	Am. Govt.	3	M-S	1	SS 132	Vanlandingham
*51a-2	Am. Govt.	3	M-S	2	SS 131	Stephenson
*51b	Am. Govt.	3	M-S	4	SS 131	Stephenson

Courses not open to Freshmen:

52	Municipal Govt.	3	M-S	3	SS 129	Reeves
----	-----------------	---	-----	---	--------	--------

Courses open only to Upper Division & Graduate Students:

140	Rur. Local Govt.	3	M-S	4	SS 132	Vanlandingham
159b	Am. Constitutional Develop.	3	M-S	2	SS 132	Trimble
165	World Politics	3				Open only to students taking "Perspectives in Contemp. Life". See page 34
170	Political Parties	3				Open only to students taking "Perspectives in Contemp. Life" See page 34
172	Ky. Govt. & Constitution	3	M-S	5	SS 129	Reeves
177b	Pub. Personnel Adm.	3	M-S	3	SS 117	Kammerer

Courses open only to Graduate Students:

206	Special Prob. in Pub. Adm.	3	M-S	5	SS 115	Kammerer
211	The Constitution & Civil Rights	3	M-S	4	SS 115	Trimble

PYSCHOLOGY

James S. Calvin, Head of Department, Neville Hall, 106

UPPER DIVISION REQUIREMENTS - Junior and Senior Years

Requirements in the Field of Concentration: The student may choose as his field of concentration either the Biological Sciences or the Social Studies. In either case, forty credits of advanced work, including the Major work, must be completed during the junior and senior years.

Requirements for a Major. Prerequisites: Psychology 1a and 1b and Psychology 8. Required: A minimum of 15 credits of advanced work in psychology, and a comprehensive examination in the senior year.

LOWER DIVISION REQUIREMENTS - See Page 20

Note--The student should enroll in one lecture-recitation section and one laboratory section for Psychology 1a.

* Open to Freshmen

COLLEGE OF ARTS AND SCIENCES — Continued

Course Number	Subject	Credits	Days	Hour	Building and Room Number	Instructor
*1a-1	Intro. to Psy., Lec.-Rec.	3	M-Th	3	NH 112	Meyers
*1a-2	Intro. to Psy., Lab.		MW	4,5	NH 206	Meyers
*1a-3	Intro. to Psy., Lab.		TTh	1,2	NH 206	Meyers
*1a-4	Intro. to Psy., Lab.		TTh	1-2:50	NH 206	Meyers
2	App. Psy. Prereq: Psy. 1a, 1b	3	M-S	4	PA 105	Mellenbruch
7	Psy. of the Child Prereq: Psy. 1a	3	M-S	2	PA 105	Bills
8	Indiv. Differences Prereq: Psy. 1a, 1b or equiv.	3	M-S	3	NH 205	Newbury

Courses open only to Upper Division & Graduate Students:

104	Social Psy.	3			Open only to students taking "Perspectives in Contemp. Life". See Page 34	
106	Ind. Psy. Prereq: Psy. 1a, 1b	3	M-S	2	NH 112	Mellenbruch
114	Abnormal Psy. Prereq: Psy. 1a, 1b	3	M-S	4	NH 112	Pattie
115	Genetic Psy. Prereq: Psy. 1a, 1b	3	M-S	5	NH 112	Newbury
124	Mental Hyg. Prereq: Psy. 1a, 1b (Not open to students who have had Hygiene 120a.)	3	M-S	3	PA 105	Bills
130	Speech Correction: A Surv. Prereq: 9 semester credits in Psy. or Educational Psy.	3	M-S	3		Diehl
131	Stuttering & Its Correction Prereq: 9 semester credits in Psy. or Educational Psy.	3		By Appt.	PA 203	Diehl

Courses open only to Graduate Students:

203a-h	Prob. in Psy.	2 ea.		By Appt.	NH	Staff
210a-h	Res. in Psy.	3 ea.		By Appt.	NH	Staff
222	Systems of Psy. & Their Hist.	3	M-S	5	NH 201	Pattie
238	The Rorschach Test	4	M-Th	1,2	NH 202	Dimmick
500-1	Thesis	0		By Appt.	NH	Staff
500-2	Thesis	0		By Appt.	NH	Staff
500-3	Thesis	0		By Appt.	NH	Staff

RADIO ARTS

Elmer G. Sulzer, Head of Department, McVey, Radio Studios

UPPER DIVISION REQUIREMENTS - Junior and Senior Years

Requirements in Field of Concentration: Forty credits in courses not open to Freshmen, including the Major work, in the field of Literature, Philosophy and the Arts, during the Junior and Senior years.

Requirements for the Major: Prerequisites: Radio Arts 1a,b. Required: Radio Arts 2a, 101, 102, 105a, 105b, 106a, 106b, and 110: Comprehensive Examination.

LOWER DIVISION REQUIREMENTS - See Page 20

*1a	Radio Today	3	M-S	4	McVH Rad	Sulzer
2a	Radio Announcing	2	MW	5	McVH Rad	Henderson
				(4 hrs. Lab. by appt.)		

Courses open only to Upper Division & Graduate Students:

105a	Radio Script Writing	2	TTh	5	McVH Rad	Henderson
				(4 hrs. Lab. by appt.)		
106a	Radio Prod.	2	MW	7	McVH Rad	Sulzer
				(4 hrs. Lab. by appt.)		

ROMANCE LANGUAGES

Hobart Ryland, Head of Department, Miller Hall, 301

UPPER DIVISION REQUIREMENTS - Junior and Senior Years

Requirements in the Field of Concentration: Forty Credits of advanced work in the field

* Open to Freshmen

COLLEGE OF ARTS AND SCIENCES — Continued

Course Number	Subject	Credits	Days	Hour	Building and Room Number	Instructor
---------------	---------	---------	------	------	--------------------------	------------

of Literature, Philosophy, and the Arts during the Junior and Senior years, including the Major work.

Requirements for a Major: Prerequisites: Junior standing: in French: R.L. 1a-b, 2a-b, 4a-b or 5a-b, 3a-b or 8a-b; in Spanish: R.L. 1a-b or 4a-b, 5a-b, 7a-b, 10a-b. Required: A minimum of 17 credits of advanced work in Romance Languages: R.L. 80a,b; Comprehensive examination in Senior year.

LOWER DIVISION REQUIREMENTS - See Page 20

Note: No credit for first semester of a beginning language until second semester is completed. The Student who presents one unit of high school foreign language will be permitted to enroll in first year work for full credit. The student who presents two units of high school foreign language will be permitted to enroll in first year work, but will receive credit only if he makes at least a B standing in these courses.

*1a	Elem. French	3	M-S	2	MH 308	Walker
*1b	Elem. French	3	M-S	3	MH 308	Eilertsen
*5a	Elem. Spanish	3	M-S	3	MH 309	Hernandez
*5b	Elem. Spanish	3	M-S	2	MH 309	Hernandez
3a	French Conversation & Comp.	2	TTh	7,8	MH 306b	Ryland
80a,b	Tutorial Seminar	1 ea.	MTh	5	MH 308	Eilertsen

Courses open only to Upper Division & Graduate Students:

102a	Adv. Spanish Grammar & Comp.	3	M-S	5	MH 306b	Server
115a	French Lit. of the 18th Cent.	3	M-S	4	MH 306b	Walker
122a	Adv. French Conversation	2	TTh	9,10	MH 306b	Ryland
150	The Tchg. of Romance Languages (Workshop)	3	M-F	2,3	MH 307	Server
	(June 18 - July 15)		MWF	7	MH 307	Server
114a-h	Indp. Work in R. L.	3 ea.	By Appt.			Ryland

SOCIAL WORK

H. E. Wetzel, Head of the Department, McVey, 314

UPPER DIVISION REQUIREMENTS - Junior and Senior years

Requirements in the Field of Concentration: Forty semester hours of advanced work in the field of Social Studies during the Junior and Senior years, including the Major work in the department.

Requirements for a Major: Prerequisites: Social Work 24. A basic minimum of 20 hours in social work including 100, 113, 116, 122, 130a, and 140a plus additional courses depending on the student's area of specialization, including specific courses in Sociology, Psychology, Hygiene, and Rural Sociology. Tutorial and comprehensive examination in the Senior year.

LOWER DIVISION REQUIREMENTS - See Page 20

Courses open only to Upper Division & Graduate Students:

105	Child Welfare Services	3	M-S	3	McVH 329	Wetzel
122	Field of Social Work	3	M-S	4	McVH 329	
130b	Community Org. for Social Welfare	3	M-S	5	McVH 329	

Courses for Senior Majors only:

C127a	Tutorial Work in Social Work	2	By Appt.		McVH 329	Wetzel
111a	Indp. Work	1	By Appt.		McVH 329	Staff

SOCIOLOGY

Irwin T. Sanders, Head of Department, Social Sciences, 206

UPPER DIVISION REQUIREMENTS - Junior and Senior Years

Requirements in the Field of Concentration: Forty credits of advanced work in the field of Social Studies during the Junior and Senior years, including the Major work.

* Open to Freshmen

COLLEGE OF ARTS AND SCIENCES — Continued

Course Number	Subject	Credits	Days	Hour	Building and Room Number	Instructor
---------------	---------	---------	------	------	--------------------------	------------

Requirements for a Major: Prerequisites: Sociology 3a and 3b, or equivalent. Required: Minimum of 18 credits of advanced work in Sociology, including at least 3 credits in Theory and Methodology, 6 credits in one of the other subdivisions below, and Sociology 19a and b, and 20a and b. Comprehensive examination in Senior year.

LOWER DIVISION REQUIREMENTS - See Page 20

Note: Six credits from the following courses will satisfy the lower division requirements in the Social Studies: Sociology or Anthropology 3a; Sociology or Geography 3b; History 5a,b, 4a,b; Political Science 51a,b.

*3a†	Societies Around the World	3	M-S	3	SS 231	Gladden
*3b	Societies Around the World	3	M-S	3	SS 203	Sanders

Courses open only to Upper Division & Graduate Students:

19a,b	Junior Tutorial	1 ea.	By Appt.			Staff
20a,b	Senior Tutorial	1 ea.	By Appt.			Staff
109a	The Family	3	M-S	2	SS 204	Gladden
114a,b,c,d	Indp. Work	1 ea.	By Appt.			Staff
127	Social Classes	3	Open only to students taking "Perspectives in Contemp. Life". See page 34			
164	The Balkans: The Study of A Peasant Society	3	M-S	4	SS 212	Sanders

TOPICAL MAJORS

John Kuiper, Chairman of Committee on Topical Majors, Frazee Hall, 103

The student may elect for his concentration field some topic and choose for the field courses which contribute to these central interests. To pursue a topical major the student must have earned a minimum academic standing of 1.5 during the freshman and sophomore years, and have the approval of the Committee on Topical Majors which will require as a rule completion of the lower division requirements as prerequisites.

ZOOLOGY

J. M. Edney, Acting Head of Department, Funkhouser Biological Sciences, 14

UPPER DIVISION REQUIREMENTS - Junior and Senior Years

Requirements in the Field of Concentration: Forty credits of advanced work in the field of Biological Sciences, during the Junior and Senior years, including the Major.

Requirements for a Major. Prerequisites: Junior standing; Zoology 6 credits. Required: Zoology 7a or 157a; Zoology 7b, 157b, or 21; Zoology 106; Zoology 108a, b; Zoology 114a,b; A minimum of 15 credits of advanced work, passing a comprehensive examination before graduation.

Courses recommended for Special Curricula: Medical Sciences 1, 7b, 101a,b, 105, 106, 108b, (117, 119, 123); Teacher Training, 1, 7a,b, 11, 21, 102, 103a,b, 108a,b, 109; Pre-Conservation Training, 1, 7a, 21, 102, 103a,b, 105, 109, 112, (117, 119, 123), 130. Prereq: No prerequisites for Zoology 1, 11, or 108a,b. Zoology 1 required for admission to all other courses. See Catalog and Instructor.

LOWER DIVISION REQUIREMENTS - See Page 20

*1-1	Prin. of Animal Biol., Lec.(4	MTh	2	FB B-3	Barbour
*1-2	Prin. of Animal Biol., Lab.(MTh	3,4	FB 12	Barbour
11-1	Nature Study, Lec. (4	MTh	2	FB B-8	Allen
11-2	Nature Study, Lab. & Field(MTh	3,4	FB B-4	Allen

Courses open only to Upper Division & Graduate Students:

101a-1	Histology, Lec.(4	TTh	2,3	FB 125	Brauer
101a-2	Histology, Lab.(MWFS	2,3	FB 127	Brauer
117-1	Medical Protozoology, Lec.(4	MTh	3	FB B-9	Edney
117-2	Medical Protozoology, Lab.(MTh	3,4	FB B-9	Edney

* Open to Freshmen

† Same as Geography 3a

COLLEGE OF ARTS AND SCIENCES — Continued

Course Number	Subject	Credits	Days	Hour	Building and Room Number	Instructor
<u>Courses open only to Graduate Students:</u>						
202a,b,c,d	Prob. in Ornithology	3 ea.	By Appt.		FB	Barbour
205a,b,c,d	Prob. in Parasitology	3 ea.	By Appt.		FB	Edney
206a,b,c,d	Prob. in Embry. & Histology	3 ea.	By Appt.		FB	Brauer
212a,b,c,d	Prob. in Ichthyology	3 ea.	By Appt.		FB	Allen

COLLEGE OF AGRICULTURE AND HOME ECONOMICS

Course Number	Subject	Credits	Days	Hour	Building and Room Number	Instructor
AGRICULTURAL ENTOMOLOGY						
<u>Courses open only to Upper Division & Graduate Students:</u>						
103	Econ. Ent: Fruit & Garden Insects	3	M-S	3	Agr 1	Townsend
104	Econ. Ent: Fm. Crop Insects & Animal Parasites	3	M-F	11,12	Agr 1	Townsend
AGRONOMY						
<u>Courses open only to Upper Division & Graduate Students:</u>						
102	Field Crop Ecology	3	M-S	1	Agr 205	Phillippe
103	Weeds	2	M-Th	5	Agr 205	Phillippe
104	Adv. Crops: Forage Crops (July 26 to Aug. 11)	3	M-S	2,3,4	Agr 304	Fergus
111	Soil Conservation (July 9-25)	3	M-S	2-5	Agr 301	Survant
112a,b,c	Special Prob. in Soils	3	By Appt.			Survant
114	Fertilizers & Soil Mgt. (June 20 - July 7)	3	M-S	2,3,4	Agr 301	Karraker
ANIMAL INDUSTRY						
<u>Inter-Session Course in Animal Industry</u>						
A I 27 or 127, Survey of the Dairy Industry, 3 credits, under Mr. Bastin, will be taught between the second semester and the summer session. Special registration is required. Each student will be responsible for his own expenses; transportation costs to be prorated.						
*1	Fm. Livestock Prod.	3	M-Th	4,5	SP 101	Barnhart, French
*2	Livestock Judg. (Prereq: A I 1)	3	M-F	7,8	SP 107	French
46	Surv. of The Poultry Industry (A I 46 is a travel course to be given July 8-21. Each student to be responsible for his own expenses; transportation costs to be prorated.)	3	By Appt.			Wightman
61	Genetics	3	M-S	2	D 109	Steele
62	Genetics Lab.	1	MW	8,9	D 225	Steele
81	Prin. of Animal Nutrition	3	M-F	7	SP 101	Good
<u>Courses open only to Upper Division & Graduate Students:</u>						
109a,b,c	Special Prob. in Animal Husbandry	3 ea.	By Appt.			Staff
129a-f	Special Prob. in Dairying	3 ea.	By Appt.			Staff
146	See A I 46					
149a,b,c	Special Prob. in Poultry	3 ea.	By Appt.			Staff
161	Genetics	3	M-S	2	D 109	Steele
162	Genetics Lab.	1	MW	8,9	D 225	Steele
169a,b,c	Special Prob. in Genetics	3 ea.	By Appt.			Steele
<u>Courses open only to Graduate Students:</u>						
221a,b,c	Res. in Dairying	3 ea.	By Appt.			Seath, Morrison, Elliott
289a,b,c	Special Prob. in Animal Nutrition	3 ea.	By Appt.			Freeman Thomas
ANIMAL PATHOLOGY						
<u>Course open only to Upper Division & Graduate Students:</u>						
102	Infect. Diseases of Domestic Animals (June 20 - July 7)	3	M-S	2,3,4	AP 201	Hull, Brown
FARM ECONOMICS						
1	Agr. Econ.	3	M-S	2	AP 112	Bradford

* Open to Freshmen

COLLEGE OF AGRICULTURE AND HOME ECONOMICS — Continued

Course Number	Subject	Credits	Days	Hour	Building and Room Number	Instructor
<u>Course open only to Upper Division & Graduate Students</u>						
110	Fm. Mgt.	3	M-S	4	AP 112	Bradford
<u>Courses open only to Graduate Students:</u>						
C202b	Econ. of Prod. as Appl. to Agr.	2	TTh	8	Agr 1	Johnson
203	Cost, Price & Prod. Relationships in Agr. (July 9-25)	3	M-S	1,2,3	Agr 202a	Johnson
FARM ENGINEERING						
3-1	Fm. Struct. Engr	3	M-F	6,7	AE 201	Brooks
3-2	Fm. Struct. Engr. (July 9-25)	3	M-S	2-5	AE 201	Brooks
4-1	Fm. Shop	3	M-F	8,9	AE 106	Young
4-2	Fm. Shop (July 26 - Aug. 11)	3	M-S	2-5	AE 106	Young
(Fm. Eng. 4-2 open to graduating seniors only by spec. permission.)						
HOME ECONOMICS						
3-1	Dietetics for Nurses	4	M-Th	3,4,5	HE 204	Taylor
3-2	Dietetics for Nurses	4	M-Th	7,8,9	HE 204	Taylor
*6	Foods (Prereq: H. Econ. 5)	3	M-Th	4,5,6	HE 201	Barkley
*52-1	Intro. to Child Develop., Lec.	4	M-F	7	HE 1	Bentley
52-2	Intro. to Child Develop., Lab.		M	2,3	NS	Bentley
			W	4,5	NS	Bentley
52-3	Intro. to Child Develop., Lab.		T	2,3	NS	Bentley
			Th	4,5	NS	Bentley
52-4	Intro. to Child Develop., Lab.		M	4,5	NS	Bentley
			W	2,3	NS	Bentley
52-5	Intro. to Child Develop., Lab.		T	4,5	NS	Bentley
			Th	2,3	NS	Bentley
52-6	Intro. to Child Develop., Lab.		F	2-5	NS	Bentley
<u>Courses open only to Upper Division or Graduate Students</u>						
101	Prin. of Nutrition (Not open to H. Econ. majors)	3	M-F	11-12	HE 1	Clemmons
102-1	Dietetics, Lec. (Prereq: H. Econ. 6,11)	3	(MWF (W	2 3	HE 205	Clemmons
102-2	Dietetics, Lab.		TTh	2,3	HE 205	Clemmons
114	Food Preservation (Prereq: Bact. 52)	3	M-Th	2,3,4	HE 200	Helton
115	Food for Special Occasions	2	TWTh	2,3	HE 201	Barkley
125	Adv. Textiles (Prereq: H.Econ. 25, 161)	2	MWF	7	HE 302	Guenther
126	Costume Design (Prereq: H.Econ. 27, Art 30)	3	By Appt		HE 300	Crumrine
129-1	Interior Decoration, Lec. (Prereq H. Econ. 25,61, Art 30)	3	MWF	8	HE 300	Crumrine
129-2	Interior Decoration, Lab.		TTh	8,9	HE 300	Crumrine
135	Decorative Textiles (Prereq H. Econ. 25, Art 30)	2	By Appt.		HE 302	Guenther
137	Tailoring (Prereq: H. Econ. 127)	2	M-Th	4,5	HE 307	Guenther
140	The School Lunch (Prereq H. Econ. 5, Econ. 51)	3	M-Th	5,6	HE 203	Helton
154	Family Living	4	(M-F (TTh	1 7	HE 105	Mumford
158	Food for Children (Prereq H.Econ. 6, 11, 52)	3	M-F	4,5	HE 303	Freels
159a,b,c	Special Prob. in Child Develop. & Family Living	2	By Appt.			Mumford
161	Consumer Prob. (Prereq Econ. 51 H. Econ. 61)	3	M-F	11-12	HE 105	Wilmore
162b	Home Mgt. & Family Relationships (Prereq. H. Econ. 162a)	3	By Appt.			Wilmore
169a,b,c	Special Prob. in Home Mgt	2 ea.	By Appt.		HE	Freels Wilmore
HORTICULTURE						
<u>Course open only to Upper Division & Graduate Students</u>						

* Open to Freshmen

COLLEGE OF AGRICULTURE AND HOME ECONOMICS — Continued

Course Number	Subject	Credits	Days	Hour	Building and Room Number	Instructor
120	Landscape Gardening (June 20 - July 7)	3	M-S	2-5	Agr 202	Elliott
FORESTRY						
*2-1	Fm. Forestry, Lec.	3	MWF	3	Agr 205	Davenport
*2-2	Fm. Forestry, Lab.		TTh	7,8	Agr 205	Davenport
<u>Course open only to Upper Division & Graduate Students:</u>						
110-1	Wood Identification & Tech., Lec.	3	MWF	4	Agr 205	Davenport
110-2	Wood Identification & Tech., Lab.		MW	7,8	Agr 202a	Davenport
MARKETS & RURAL FINANCE						
<u>Courses open only to Upper Division & Graduate Students:</u>						
100	Agr. Mktg.	3	M-S	3	Agr 4	Vennes
101	Cooperative Mktg.	3	M-S	1	Agr 4	Vennes
102a	Mktg. Tobacco & Other Fm. Crops, Lec. (July 26 - Aug. 11)	2	M-S	2,3,4	Agr 301	Clark
102b	Mktg. Tobacco & Other Fm. Crops, Lab.(Tob.Grading)(July 26-Aug. 11)	1	M-S	2,3,4	Agr 301	Clark
<u>Courses open only to Graduate Students:</u>						
202a,b,c	Special Prob. in Mktg. & Rur. Fin.	3 ea.	By Appt.			Brown
210	Theory of Agr. Prices	3	M-S	2	Agr 4	Brown
RURAL SOCIOLOGY						
<u>Courses open only to Upper Division & Graduate Students:</u>						
115	Org. of Rural Groups	3	M-S	1	Agr 1	Bauder
190a-c	Special Prob. in Rur. Life	2	By Appt.			Staff
<u>Course open only to Graduate Students:</u>						
200a-	Res. in Rur. Soc.	2	By Appt.			Staff

* Open to Freshmen

COLLEGE OF ENGINEERING

Course Number	Subject	Credits	Days	Hour	Building and Room Number	Instructor
ARCHITECTURAL ENGINEERING						
1	Arch. Rendering	2		12 hrs	by appt. AH 216	Gray
4a	Arch. Design	3		18 hrs.	by appt. AH 216	Gray
4b	Arch. Design	3		18 hrs.	by appt. AH 216	Gray
CIVIL ENGINEERING						
15	Gen. Surv.	3		(Summer Surveying Camp		Shaver,
16b	Route Surv	3		(Camp Robinson		Blythe &
17	Hydrographic Surv	1		(Noble, Kentucky		Others
18	Map & Topographic Draw	2	M-F	1-2.50	Engr. Annex 200	Hoffmann
31	Highway Location, Construc & Maintenance	2	M-Th	3	AH 214	Pendley
81-1	Testing Mat.	1	TTh	1,2	AH 108	Chambers
81-2	Testing Mat	1	MW	1-2.50	AH 108	Pendley
120	Hydraulics	2	T-F	5	AH 210	Cheek
123	Hydraulics Lab.	1	TTh	1-3.50	AH 108	Cheek
171a	Theory of Structures	3	M-S	4	AH 214	Moldovan
171b	Theory of Structures	3	M-S	2	AH 214	Mory
173a	Steel Structures	3	M-S	4,5	AH 212	Mory
173b	Steel Structures	2		2 hrs by appt.		
174	Graph Solutions	2	M-Th	1-3.50	AH 216	Moldovan
ELECTRICAL ENGINEERING						
11	Elec. Lab	1	W	1-4.50	Engr. Annex Lab.	Adams Staff
21-1	Prin. of Elec. Engr	4	M-S	5	AH 201	
21-11	Prin. of Elec. Engr, Lab		TTh	2-3.50	AH 130	
21-12	Prin. of Elec. Engr, Lab		TTh	1,2	AH 130	
105b-1	Elec. Engr Circ. & Mach.	4	M-S	6	AH 232	Staff
105b-11	Elec. Engr. Circ. & Mach., Lab.		TTh	2-4.50	AH 130	
107-1	Elec. Controls	3	M-F	4	AH 210	Noble
107-11	Elec. Controls, Lab.		TTh	1-2.50	AH 130	
107-12	Elec. Controls, Lab.		MF	3-4.50	AH 130	
108-1	Ind Electronics	3	M-S	2	AH 205	Romanowitz
108-11	Ind. Electronics, Lab.		W	1-2.50	AH 244	
			S	3,4	AH 244	
108-12	Ind. Electronics, Lab.		TTh	3-4.50	AH 244	
110-1	Elec. Lab.	2	WS	5	AH 205	Bureau
110-11	Elec. Lab., Lab.		TTh	1-2.50	AH 130	
110-12	Elec. Lab., Lab.		MF	2-3.50	AH 130	
114-1	Alt. Cur. Circ.	4	M-S	2	AH 201	Nierenberg
114-11	Alt. Cur. Circ., Lab.		MF	1-3.50	AH 130	
115-1	Dir. Cur. Mach.	3	MTThF	4	AH 232	Barnett
115-11	Dir. Cur. Mach., Lab		TTh	1-3.50	AH 130	
116-1	Alt. Cur. Mach.	4	M-S	2	AH 232	Barnett
116-11	Alt. Cur. Mach., Lab.		MF	1-3.50	AH 130	
120	Elec. Circ. Anal.	3	M-F	3	AH 232	Smith
			W	1-3.50		
123	Elec. Equip. Prob.	2	WS	4	AH 205	Nierenberg
				10 hrs. by appt.		
124	Elec. Design	2	TTh	6	AH 201	Barnett
				10 hrs. by appt.		
135-1	Elec. Networks	4	M-S	2	AH 210	Allison
135-11	Elec. Networks, Lab.		TTh	1-3.50	Engr. Annex Lab.	
135-12	Elec. Networks, Lab.		TTh	1-1.50	Engr. Annex Lab.	
			MF	2-3.50		
136	Illumin. Engr.	3	M-F	3	AH 201	Noble
				5 hrs. Lab. by appt.		
137	Elec. Power Trans. & Distrib.	3	M-S	5	AH 232	Nierenberg
151b	Seminar	1	MF	2-3.50	AH 205	Staff
161-1	Electronics	4	M-S	4	AH 201	Allison
161-11	Electronics, Lab.		MF	1-3.50	Engr. Annex Lab.	

COLLEGE OF ENGINEERING — Continued

Course Number	Subject	Credits	Days	Hour	Building and Room Number	Instructor
161-12	Electronics, Lab.		MF	1-1:50	Engr. Annex Lab.	
162-1	Radio Engr. I	4	TTh	2-3:50		
162-11	Radio Engr. I, Lab.		M-S	3	AH 210	Smith
162-12	Radio Engr. I, Lab.		MF	1-3:50	AH 244	
			MF	1-1:50	AH 244	
			TTh	2-3:50		
164-1	Radio Engr. II	4	M-S	5	AH 210	Romanowitz
164-11	Radio Engr. II, Lab.		TTh	1-3:50	AH 244	
164-12	Radio Engr. II, Lab.		TTh	1-1:50	AH 244	
			MF	2-3:50		
165	Radio Engr.--Fund. of Elec. Waves	2	MTThF	4	AH 205	Romanowitz
ENGINEERING - GENERAL						
<u>Applied Mechanics</u>						
2	Mechanisms (Mech.)	3	MTThF	4	AH 204	Staff
			TTh	1-3:50	AH 219	
3	Statics	3	M-S	4	AH 202	Staff
4	Dynamics (Civil & Elec.)	2	MWFS	3	AH 204	Staff
6	Mechanisms (Elec.)	2	MTThF	6	AH 204	Staff
7	Dynamics (Mech.)	3	M-S	2	AH 202	Staff
100	Strength of Mat.	4	TTh	3	AH 202	Staff
			M-S	5	AH 202	
<u>Engineering Drawing</u>						
1a-1	Elem. Engr. Draw.	2	M-S	2,3	Engr. Annex 200)Nollau,)Hoffmann &)Mock
1a-2	Elem. Engr. Draw.	2	M-S	4,5	"	
1b	Descript. Geom.	2	M-S	4,5	"	
2	Mech. Draw. (For students in Ind. Chem.)	1	MWF	2,3	"	
18-1	Adv. Engr. Draw.	2	M-S	4,5	"	
18-2	Adv. Engr. Draw.	2	M-F	1-2:50	")
			ThF	3-3:50	"	
MECHANICAL ENGINEERING						
*15a-1	Mfg. Proc., Lec.	2	MW	5	AH 232	Staff
15a-11	Mfg. Proc., Lab.		M	1-3:50	AH 110c	
15a-12	Mfg. Proc., Lab.		W	1-3:50	AH 110c	
15a-13	Mfg. Proc., Lab.		F	1-3:50	AH 110c	
15a-14	Mfg. Proc., Lab.		S	2,3,4	AH 110c	
*15b-1	Mfg. Proc., Lec.	2	TTh	5	AH 232	Staff
15b-11	Mfg. Proc., Lab.		T	1-3:50	AH 110c	
15b-12	Mfg. Proc., Lab.		Th	1-3:50	AH 110c	
100a	Mach. Design	3	M-S	3	AH 235	Staff
100b	Mach. Design	3	MWF	1-4:50	AH 216	Staff
			TTh	1-3:50		
104a	Engr. Thermo.	3	M-S	5	AH 235	Staff
104b	Engr. Thermo.	3	M-S	4	AH 235	Staff
105	Power Plant Engr.	3	M-S	4	AH 240	Staff
107	Fluid Mech.	3	M-S	2	AH 235	Staff
108	Internal Comb. Engines	3	M-S	2	AH 236	Staff
109	Refrigeration	3	M-S	3	AH 236	Staff
112-1	Mech. Lab., Lec.	2	MW	1-1:50	AH 235	Staff
112-11	Mech. Lab., Lab.		MW	2-4:50	AH 131a	
112-2	Mech. Lab., Lec.	2	TTh	1-1:50	AH 235	Staff
112-21	Mech. Lab., Lab.		TTh	2-4:50	AH 131a	
113a-1	Mech. Lab., Lec.	2	MW	1-1:50	AH 236	Staff
113a-11	Mech. Lab., Lab.		MW	2-4:50	AH 131a	
113a-2	Mech. Lab., Lec.	2	TTh	1-1:50	AH 236	Staff
113a-21	Mech. Lab., Lab.		TTh	2-4:50	AH 131a	
113b-1	Mech. Lab., Lec.	2	MW	1-1:50	AH 219	Staff
113b-11	Mech. Lab., Lab.		MW	2-4:50	AH 131a	
113b-2	Mech. Lab., Lec.	2	TTh	1-1:50	AH 219	Staff
113b-21	Mech. Lab., Lab.		TTh	2-4:50	AH 131a	
114a	Air Condit., Heat, & Ventila.	3	M-S	4	AH 236	Staff

* Student must sign for 1 lecture section and 2 shop sections

COLLEGE OF ENGINEERING — Continued

Course Number	Subject	Credits	Days	Hour	Building and Room Number	Instructor
114b-1	Air Condit., Heat. & Ventila. Des., Lec.	3	MW	5	AH 236	Staff
114b-11	Air Condit., Heat. & Ventila. Des., Lab.		MWF	1-4:50	AH 216	
122a	Seminar	1	M-Th	2	AH 219	Staff
122b	Seminar	1	M-Th	2	AH 219	Staff
129	Elem. of Heat Transfer	4	FS	2	AH 219	Staff
			M-S	3		
134	Elem. of Engr. Thermo.	3	M-S	4	AH 219	Staff
136-1	Int. Comb. Engine Lab.	1	MW	1-3:50	Aero.Lab.	Staff
136-2	Int. Comb. Engine Lab.	1	TTh	1-3:50	Aero.Lab.	Staff
METALLURGICAL ENGINEERING						
60	Met. Lab. & Shop Prac.	6	By Appt.			Staff
MINING ENGINEERING						
131	Mine Surv.	1	Summer Surveying Camp Camp Robinson Noble, Kentucky			Spokes

COLLEGE OF LAW

Course Number	Subject	Credits	Days	Hour	Building and Room Number	Instructor
122	Property III	3	M-Th MT	3 5	L 212	Murray
C141	Partnership	1	TW	5	L 213	Ham
145	Insurance	2	FS	3,5	L 212	Ham
149	Municipal Corp.	2	FS	2,4	L 213	Stahr
162	Property IV (Future Interests)	3	M-W	2,4	L 212	Matthews
163	Wills & Adm. of Estates	2	WTh	2,5	L 100	Whiteside
164	Conflict of Laws	3	Th-S	3,5	L 213	Moreland
167	Administrative Law	3	Th-S	2,4	L 212	Oberst
C172a	Legal Res. & Writing	1	MT	3	L 207	Whiteside
C173	Federal Jurisdiction & Procedure	3	M-W	2,4	L 213	McEwen

COLLEGE OF EDUCATION

Course Number	Subject	Credits	Days	Hour	Building and Room Number	Instructor
---------------	---------	---------	------	------	--------------------------	------------

A standing of 1.0 is required for admission to any course in the College of Education.

DIVISION OF ADMINISTRATION

101	Sch. Org.	3	M-S	2	TEB 131	Davis
198	The Adm. of Pupil Personnel (June 18 - July 5)	3		By Appt.	SS 102	Ridgway

Courses open only to Graduate Students:

202	Local Sch. Adm.	3	M-F	8	TEB 222	Meece
203	Constitutional & Legal Basis of Pub. Sch. Adm.	3	M-S	2	TEB 222	Meece
207	Sch. Bldgs. & Equip.	3	M-S	2	TEB 231	Hopper
221b	Seminar in Adm. (June 25-July 14)	3		By Appt.	Engr. Annex 101	Meece & Hopper
229	The Elem. Prin.	3	M-S	5	TEB Aud.	Duncan
232	High Sch. Adm.	3	M-S	1	TEB RecRm	Turpen
290b	Techn. & Professional Work of the Registrar	3		By Appt.	A RO	Sprowles
301a,b	Res. Prob. in Ed. Adm.	3 ea.		By Appt.	TEB 134	Meece & Hopper

DIVISION OF FOUNDATIONS OF EDUCATION

119	The Elem. Sch. Pupil	2	M-Th	1	TEB 231	Rowley
122	Ed. Tests & Measurements	3	M-S	5	TEB 131	Jensen
147	The Sec. Sch. Pupil	2	M-Th	3	TEB 131	Rowley
C147	The Sec. Sch. Pupil	3	M-S	3	TEB RecRm	Reed
148	Ed. Psy.	3	M-S	7	TEB 222	Rowley

Courses open only to Graduate Students:

201	Foundations in Ed.	5	M-F	7,8	TEB Aud.	Hartford, Nath
220	Compara. Ed.	3	M-S	3	TEB Kdg.A	Nath
241a	Seminar in Foundations of Ed. (June 18 - July 14)	3	M-S	4,5	TEB Kdg.A	Hartford
254	Prob. in Ed. Psy.	3	M-S	3	TEB 231	Jensen
255a	Guidance & Counseling in Today's Schs. (June 18 - July 13)	3	M-F	7,8	TEB 231	Martin
255b	Guidance & Counseling in Today's Schs. (July 16 - Aug. 10)	3	M-F	7,8	TEB 231	Martin
275	Adv. Prob. in Phil. of Ed. (July 16- Aug. 11)	3	M-S	4,5	TEB Kdg.A	Martz

DIVISION OF INSTRUCTION AND PLACEMENT

Business Education

158a	Tchg. Sect. Subjects	3	M-S	5	TEB 108	Musselman, Thomas
184	Tch. Office Appliances	2	T-Th	1,2	A 302B	Thomas
C192	Tchg. Gen. Bus. Subjects in the Sec. Schs.	3	M-S	4	TEB 108	Humphreys

Courses open only to Graduate Students:

C208a-d	Prob. in Bus. Ed. (July 2 - 13)	2 ea.	M-F	1-4	TEB 108	Musselman, Walker
C257a,b	Seminar in Bus. Ed. (July 16 - 27) (Field Trips)	2 ea.	M-F	1-4	TEB 108	Dickerson

Curriculum and Instruction

175c	Mod. Ed. Prob. (Perspectives in Contemp. Life)	3	Open only to students taking "Perspectives in Contemp. Life. See page 34			
175d	Mod. Ed. Prob. (Employment Counseling)(July 2 - 14)	3		By Appt.	TEB 107	Nichols
175e	Mod. Ed. Prob. (Ed. of Mentally Retarded Children)(June 18 - July 28)	3		By Appt.	SS 118	Retherford

COLLEGE OF EDUCATION — Continued

Course Number	Subject	Credits	Days	Hour	Building and Room Number	Instructor
175f	Mod. Ed. Prob. (Ed. of Crippled Children)(June 18 - July 28)	3			SS 202	Retherford
175g	Mod. Ed. Prob. (Ed. of Handicapped Children)(A Survey)(June 18 - July 28)	3			SS 202	Retherford
186	Visual Tchg	3	M-S	1	TEB 222	Kelley
<u>Courses open only to Graduate Students:</u>						
224	Org & Supervision of Stud. Tchg. (July 30 - Aug. 11)	3			Engr. Annex 101	Ginger
225	Supervision of Instruct	3	M-S	3	TEB Aud.	Adams
227	Prin. of Curriculum Construc.	3	M-S	2	TEB RecRm	Musselman
<u>Elementary Education</u>						
C20	Ind Arts in the Elem. Sch.	2	M-F	7,8	TEB 170	Haines
42	Tchg Arithmetic in the Elem. Sch.	3	M-S	4	TEB 231	Harris
110	Art & Craft Activities in the Elem. Sch.	2	M-F	2,3	TEB 170	Haines
C133	Stud. Tchg. in the Elem. Sch.	8			TEB 126	Ginger & Staff
172	The Tchg. of Reading	3	M-S	3	TEB 222	Duncan
196	Science in the Elem. Sch.	3	M-F	7	TEB Cafe.	Kelley
<u>Courses open only to Graduate Students:</u>						
212	The Elem. Sch.	3	M-F	7	TEB RecRm	Harris
215a,b	Indp. Work in Elem. Ed.	2			TEB 136	Duncan, Harris
<u>Secondary Education</u>						
105	Fund of Sec Ed	3	M-F	8	TEB 131	Reed
<u>Courses open only to Seniors and Graduate Students:</u>						
153	Stud. Tchg in Eng	9			TEB 126	Ginger & Staff
154	Stud. Tchg in Languages	9			TEB 126	Ginger & Staff
155	Stud. Tchg. in the Sciences	9			TEB 126	Ginger & Staff
156	Stud. Tchg in Mathematics	9			TEB 126	Ginger & Staff
157	Stud. Tchg. in Social Studies	9			TEB 126	Ginger & Staff
169a-1	Stud. Tchg in Phy. Ed. (for men only, by special arrangement)	4			TEB 126	Ginger & Staff
169a-2	Stud. Tchg in Phy. Ed. (for women only, by special arrangement)	4			TEB 126	Ginger & Staff
C169b-1	Stud. Tchg. in Phy Ed. (for men only, by special arrangement)	5			TEB 126	Ginger & Staff
C169b-2	Stud. Tchg in Phy. Ed. (for women only, by special arrangement)	5			TEB 126	Ginger & Staff
193	Stud. Tchg in Bus. Ed.	9			TEB 126	Ginger & Staff
<u>Courses open only to Graduate Students:</u>						
214	The Sec. Sch.	3	M-S	4	TEB Aud	Adams
248a,b	Indp Work in Sec Ed.	3 ea.			TEB 126	Ginger
<u>DIVISION OF VOCATIONAL EDUCATION</u>						
<u>Agricultural Education</u>						
179	Determining Content in Vocational Agr (June 18 - July 7)	3			TEB 226	Hammonds, Wall
185a	Prob in Agr Ed (July 9-25)	3			TEB 207	Binkley, Cox, Lamar
185a	Prob in Agr Ed (Aug. 13-29)	3			TEB 226	Binkley, Cox, Lamar
185b	Prob in Agr. Ed (July 9-25)	3			TEB 201	Binkley
<u>Courses open only to Graduate Students:</u>						
280	Meth in Tchg. Vocational Agr. (July 9-25)	3			TEB Kdg B	Hammonds

COLLEGE OF EDUCATION — Continued

Course Number	Subject	Credits	Days	Hour	Building and Room Number	Instructor
287a	Adv. Prob. in Agr. Ed.	3		By Appt.	TEB 219	Hammonds, Tabb
287b	Selecting Tchg. Mat. (July 9-25)	3		By Appt.	TEB 226	Wall
287c	Adult-Farmer Schs. (June 18 -July 7)	3		By Appt.	TEB 207	Tabb
287d	Directing Fm. Practice (July 27 - Aug. 11)	3		By Appt.	TEB 226	Hammonds
287e	Tchg. Fm. Shop (July 9-25)	3		By Appt.	TEB 211	Tabb
287f	Young-Farmer Schs. (July 26 - Aug. 10)	3		By Appt.	TEB 207	Wall
289a,b	Res. in Agr. Ed.	3 ea.		By Appt.	TEB 219	Hammonds, Tabb
<u>Distributive Education</u>						
C115b	Prob. in Distributive Ed. (Aug. 6-17)	2		By Appt.	TEB Kdg B	Baker
<u>Home Economics Education</u>						
<u>Courses open only to Graduate Students:</u>						
261	Home Econ. Supervision (July 16 - Aug. 11)	3	M-S	2-4	TEB 105	Sneed
263	Current Prob. in Home Econ. Ed. (July 16 - Aug. 11)	3	M-S	2-4	TEB 105	Sneed
C268	Home Econ. Curriculum Construc. (June 18 - July 14)	4	M-S M-F	3-5 7,8	TEB 101 TEB 101	Parker & Others
<u>Industrial Education</u>						
C77	Shop Mgt. Prob. (Aug. 6-17)	3		By Appt.	TEB 201	Crumpton
C134	Org. & Operation of Part-time & Evening Classes (Aug. 20-31)	3		By Appt.	TEB 222	Crumpton
C143	Mod. Ind. Anal. (Aug. 20-31)	3		By Appt.	TEB 231	Youmans
C183b	Meth. in Ind. Ed. (Aug. 6-17)	3		By Appt.	TEB 207	Youmans

COLLEGE OF COMMERCE

Course Number	Subject	Credits	Days	Hour	Building and Room Number	Instructor
ECONOMICS						
*2	Econ. Hist. of Eur.	3	M-S	3	WH 102	Jennings
*3	Econ. Hist. of the U. S.	3	M-S	2	WH 103	Jennings
*7a	Prin. of Acctg., Rec.	4	M-Th	1	WH 306	Tolman
	Prin. of Acctg., Lab.		M-Th	2,3	WH 306	Tolman
*7b	Prin. of Acctg., Rec.	4	MTThF	4	WH 306	Miller
	Prin. of Acctg., Lab.		M-Th	5,6	WH 306	Miller
16	Tutorial Work in Econ.	1	By Appt.		WH 104	Carter
51	Prin. of Econ.	3	M-S	5	WH 102	Connor
52	Prin. of Econ.	3	M-S	4	WH 301	Tolman
102	Labor Econ. (Prereq: Econ. 52)	3	M-S	4	WH 102	Carter
104	Pub. Fin. (Prereq: Econ. 52)	3	M-S	2	SS 203	Hargreaves
105	Money & Bank. (Prereq: Econ. 52)	3	M-S	2	SS 228	Masten
107	Statistical Meth., Rec. & Lab.	3	M-Th	1,2	WH 401	Connor
112a-f	Indiv. Work in Econ.	1 ea.	By Appt.			Staff
155	Ind. Relations	3	M-S	2	WH 102	Carter
165	Compara. Econ. Systems	3	M-S	4	SS 129	Masten
202a-f	Seminar	1 ea.	By Appt.			Carpenter
204	Surv. of Econ. Theory Since the Austrian Sch.	3	M-S	4	SS 117	Hargreaves
211	Adv. Money & Banking	3	By Appt.		SS 126	Masten
218a	Econ. Theory	3	M-S	3	WH 103	Sullivan
COMMERCE						
*7a	Prin. of Acctg., Rec.	4	M-Th	1	WH 306	Tolman
	Prin. of Acctg., Lab.		M-Th	2,3	WH 306	Tolman
*7b	Prin. of Acctg., Rec.	4	M-Th	4	WH 306	Miller
	Prin. of Acctg., Lab.		M-Th	5,6	WH 306	Miller
**13a	Sect. Pract. Shorthand (Prereq. or concurrent: Eng. 1a)	3	M-S	3	WH 207	Humphreys
13b	Sect. Pract. Shorthand (Prereq: Com. 13a)	3	M-S	5	WH 303	Humphreys
14a	Adv. Sect. Pract. (Prereq: Com. 13b and 17b)	3	By Appt.		WH 303	Thomas
14b	Adv. Sect. Pract.	3	By Appt.		WH 303	Thomas
*17a	Sect. Pract., Type. (Prereq. or concurrent: Eng. 1a)	2	MWThF	4	WH 303	McMurtry
17b	Sect. Pract., Type.	2	MWThF	3	WH 303	McMurtry
60	Prin. of Mktg.	3	M-S	1	WH 101	Miller
96a	Intermed. Acctg.	3	M-S	5	WH 207	Grady
96b	Intermed. Acctg.	3	M-S	3	WH 301	Grady
109a	Bus. Law	3	M-S	3	WH 101	Lewis
109b	Bus. Law	3	M-S	5	WH 101	Lewis
117	Corp. Fin. (Prereq: Econ. 52 and Com. 7b)	3	M-S	2	WH 301	Pickett
118	Cost. Acctg. (Prereq: Com. 7b)	3	M-S	3	WH 401	Beals
119	Retail, Merchandising (Prereq: Com. 60)	3	M-S	4	WH 101	McIntyre
129	Credit & Statement Anal.	2	MTThF	2	WH 207	Haun
131	Investments	3	M-S	4	WH 102	Pickett
133	Income Tax Procedure (Prereq: Com. 96b)	3	M-S	4	WH 207	Haun
136	Sales Mgt. (Prereq: Com. 60)	3	M-S	2	WH 101	McIntyre
137	Ind. Mgt. (Prereq: Econ. 52)	3	M-S	1	WH 103	Massie
138	Cases in Mgt.	3	M-S	5	WH 301	Massie
145	Office Mgt.	3	M-S	6	WH 301	Thomas
146	Spec. Acctg. Prob. (Prereq: Com. 96b)	3	M-S	1	WH 207	Beals

* Open to Freshmen

** No credit for 13a until 13b is completed.

SHORT COURSES

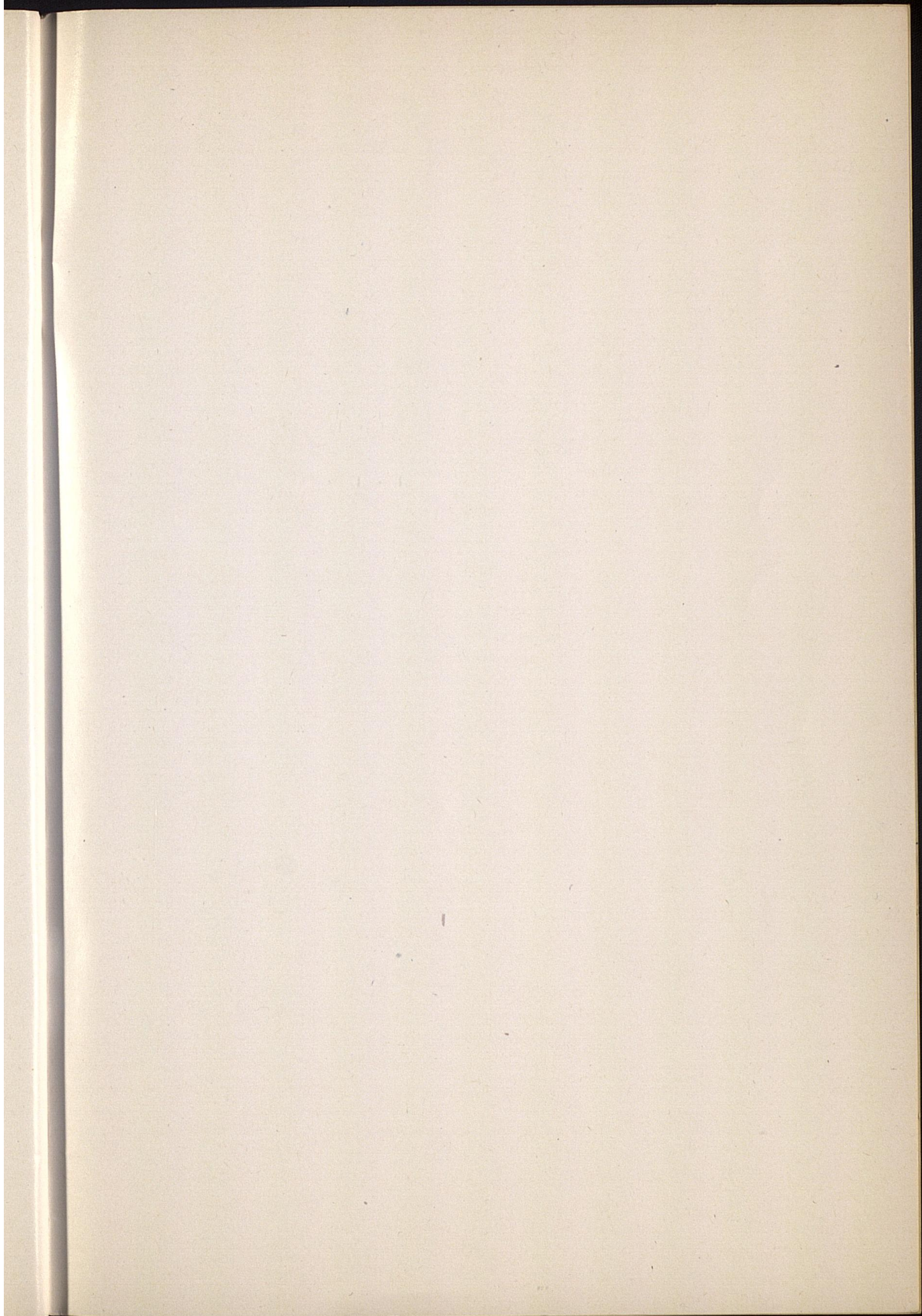
Course Number	Subject	Credits	Days	Hour	Building and Room Number	Instructor
COLLEGE OF ARTS AND SCIENCES						
ANCIENT LANGUAGES						
C150	The Tchg. of Latin (Demonstration Class in Beginning High School Latin June 20 - July 14)	1	M-S	4	FH 106	
C150	The Tchg. of Latin (June 20-July 14)	4	M-S	3-5	FH 106	Staff
GEOGRAPHY						
130	Regional Field Observation-- Tour of Mexico (This regional field group will leave for Mexico Friday morning, August 10 and will return Tuesday, September 4. Credit will be based upon preliminary reading, field work and written report. All expense cost of the tour will be about \$295.00. This does not include the Registration fee for credit. A special folder will be sent upon request by writing to the Geography Department.)	3				Schwendeman
ROMANCE LANGUAGES						
150	The Tchg. of Romance Languages (Workshop)(June 18 - July 15)	3	M-F MWF	2,3 7	MH 307 MH 307	Server Server Ryland
COLLEGE OF AGRICULTURE & HOME ECONOMICS						
AGRONOMY						
104	Adv. Crops: Forage Crops (July 26 - Aug. 11)	3	M-S	2-4	Agr 304	Fergus
111	Soil Conservation (July 9-25)	3	M-S	2-5	Agr 301	Survant
114	Fertilizers & Soil Mgt. (June 20 - July 7)	3	M-S	2-4	Agr 301	Karraker
ANIMAL INDUSTRY						
46	Surv. of the Poultry Industry (A I 46 is a travel course to be given July 8 - 21. Each student to be responsible for his own expenses; transportation costs to be prorated.)	3		By Appt.		Wightman
ANIMAL PATHOLOGY						
102	Infect. Diseases of Domestic Animals (June 20 - July 7)	3	M-S	2-4	AP 201	Hull,Brown
FARM ECONOMICS						
203	Cost, Price & Prod. Relationships in Agr. (July 9-25)	3	M-S	1-3	Agr 202a	Johnson
FARM ENGINEERING						
3	Fm. Struct. Engr. (July 9-25)	3	M-S	2-5	AE 201	Brooks
4-2	Fm. Shop (July 26 - Aug. 11) (Fm. Engr. 4-2 open to graduating Seniors only by special permission.)	3	M-S	2-5	AE 106	Young
HORTICULTURE						
120	Landscape Gardening (June 20 - July 7)	3	M-S	2-5	Agr 202	Elliott
MARKETS & RURAL FINANCE						
102a	Mktg. Tobacco & Other Fm. Crops, Lec. (July 26 - Aug. 11)	2	M-S	2-4	Agr 301	Clark

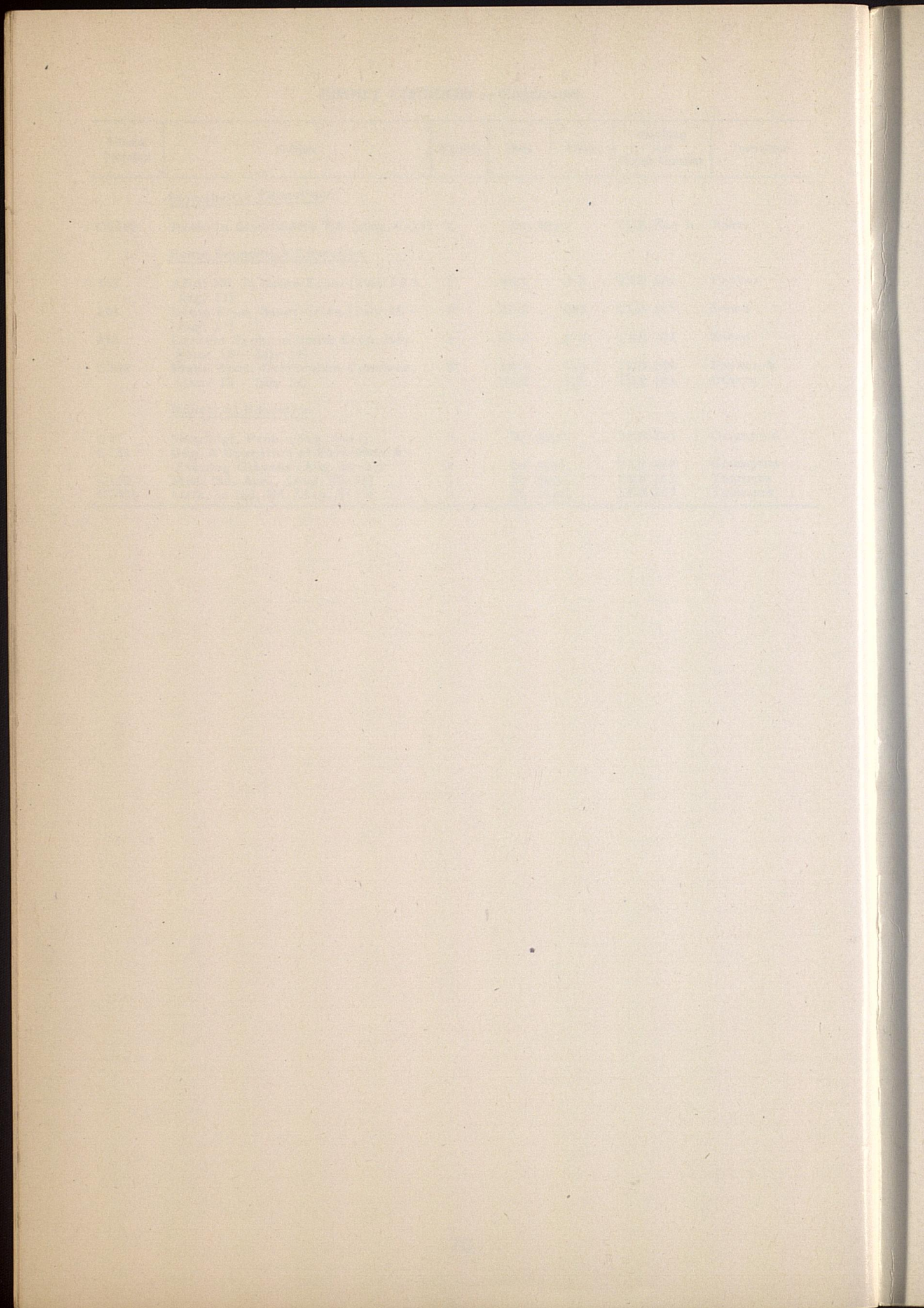
SHORT COURSES — Continued

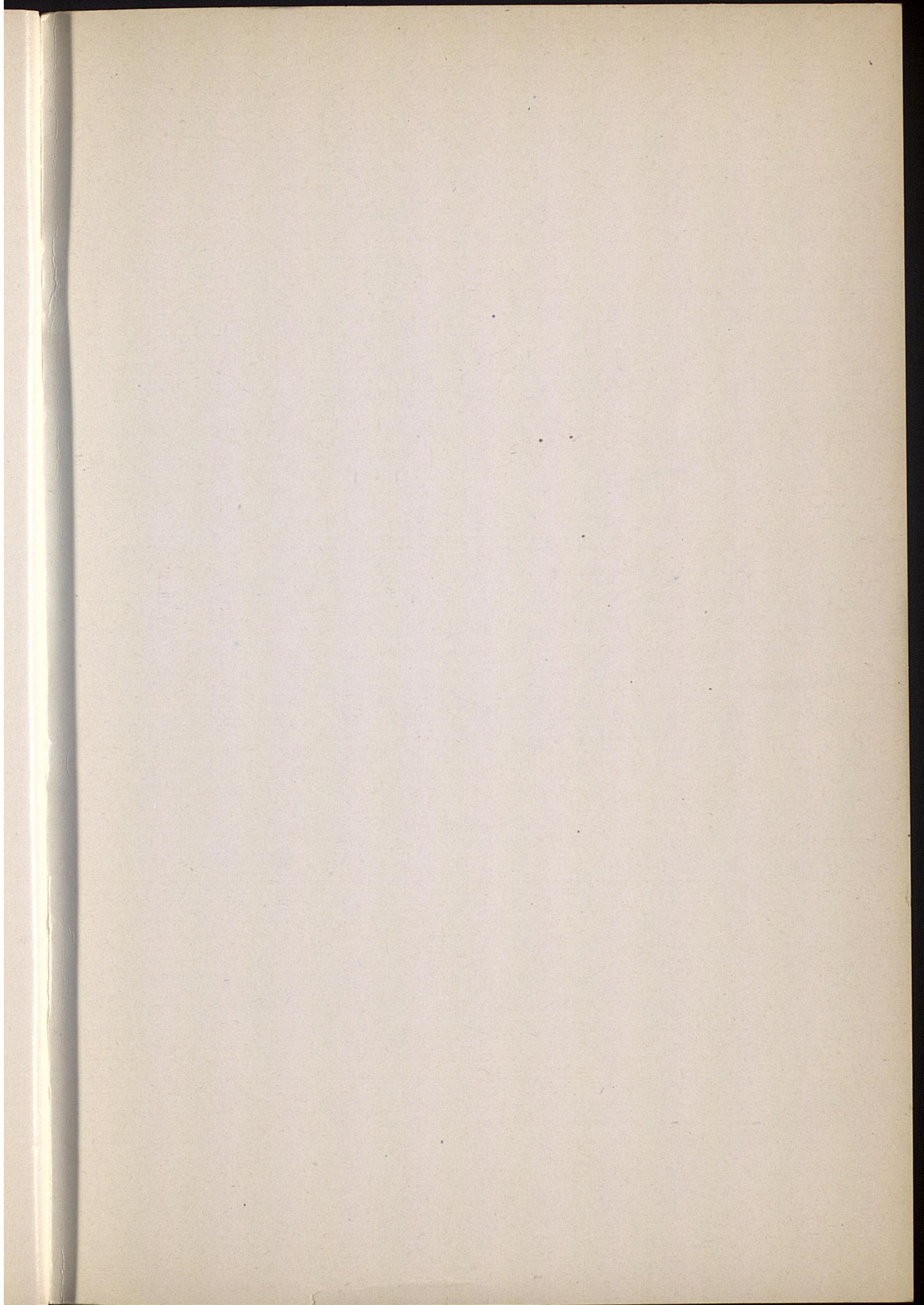
Course Number	Subject	Credits	Days	Hour	Building and Room Number	Instructor
102b	Mktg. Tobacco & Other Fm. Crops, Lab. (Tobacco Grading) (July 26 - Aug. 11)	1	M-S	2-4	Agr 301	Clark
COLLEGE OF EDUCATION						
DIVISION OF ADMINISTRATION						
198	The Adm. of Pupil Personnel (June 18 - July 5)	3	By Appt.		SS 102	Ridgway
221b	Seminar in Adm. (June 25 - July 14)	3	By Appt.		Engr. Annex 101	Meece, Hopper
DIVISION OF FOUNDATIONS OF EDUCATION						
241a	Seminar in Foundations of Ed. (June 18 - July 14)	3	M-S	4,5	TEB Kdg A	
255a	Guidance & Counseling in Today's Schs. (June 18 - July 13)	3	M-F	7,8	TEB 231	Martin
255b	Guidance & Counseling in Today's Schs. (July 16 - Aug. 10)	3	M-F	7,8	TEB 231	Martin
275	Adv. Prob. in Phil. of Ed. (July 16 - Aug. 11)	3	M-S	4,5	TEB Kdg A	
DIVISION OF INSTRUCTION & PLACEMENT						
<u>Business Education</u>						
C208a-d	Prob. in Bus. Ed. (July 2-13)	2 ea.	M-F	1-4	TEB 108	Musselman, Walker
C257a,b	Seminar in Bus. Ed. (July 16-27) (Field trips)	2 ea.	M-F	1-4	TEB 108	Dickerson
<u>Curriculum and Instruction</u>						
175d	Mod. Ed. Prob. (Employment Counseling) (July 2-14)	3	By Appt.		TEB 107	Nichols
175e	Mod. Ed. Prob. (Ed. of Mentally Retarded Children) (June 18 - July 28)	3	By Appt.		SS 118	Retherford
175f	Mod. Ed. Prob. (Ed. of Crippled Children) (June 18 - July 28)	3	By Appt.		SS 202	Retherford
175g	Mod. Ed. Prob. (Ed. of Handicapped Children) (A Surv.) (June 18 - July 28)	3	By Appt.		SS 202	Retherford
224	Org. & Supervision of Stud. Tchg. (July 30 - Aug. 11)	3	By Appt.		Engr. Annex 101	Ginger
DIVISION OF VOCATIONAL EDUCATION						
<u>Agricultural Education</u>						
179	Determining Content in Vocational Agr. (June 18 - July 7)	3	By Appt.		TEB 226	Hammonds, Wall
185a	Prob. in Agr. Ed. (July 9-25)	3	By Appt.		TEB 207	Binkley, Cox
185a	Prob. in Agr. Ed. (Aug. 13-29)	3	By Appt.		TEB 226	Lamar Binkley, Cox
185b	Prob. in Agr. Ed. (July 9-25)	3	By Appt.		TEB 201	Lamar Binkley
280	Meth. in Tchg. Vocational Agr. (July 9-25)	3	By Appt.		TEB Kdg. B	Hammonds
287b	Selecting Tchg. Mat. (July 9-25)	3	By Appt.		TEB 226	Wall
287c	Adult-Farmer Schs. (June 18 - July 7)	3	By Appt.		TEB 207	Tabb
287d	Directing Fm. Practice (July 27-Aug. 11)	3	By Appt.		TEB 226	Hammonds
287e	Tchg. Fm. Shop (July 9-25)	3	By Appt.		TEB 211	Tabb
287f	Young-Farmer Schs. (July 26 - Aug. 10)	3	By Appt.		TEB 207	Wall

SHORT COURSES — Continued

Course Number	Subject	Credits	Days	Hour	Building and Room Number	Instructor
<u>Distributive Education</u>						
C115b	Prob. in Distributive Ed. (Aug. 6-17)	2		By Appt.	TEB Kdg B	Baker
<u>Home Economics Education</u>						
165	Adult Ed. in Home Econ. (July 16 - Aug. 11)	3	M-S	3-5	TEB 101	Parker
261	Home Econ. Supervision (July 16 - Aug. 11)	3	M-S	2-4	TEB 105	Sneed
263	Current Prob. in Home Econ. Ed. (June 18 - July 14)	3	M-S	2-4	TEB 105	Sneed
C268	Home Econ. Curriculum Construc. (June 18 - July 14)	4	M-S M-F	3-5 7,8	TEB 101 TEB 101	Parker & Others
<u>Industrial Education</u>						
C77	Shop Mgt. Prob. (Aug. 6-17)	3		By Appt.	TEB 201	Crumpton
C134	Org. & Operation of Part-time & Evening Classes (Aug. 20-31)	3		By Appt.	TEB 222	Crumpton
C143	Mod. Ind. Anal. (Aug. 20-31)	3		By Appt.	TEB 231	Youmans
C183b	Meth. in Ind. Ed. (Aug. 6-17)	3		By Appt.	TEB 207	Youmans







7