

Copy 2

KENTUCKY vs HOUSTON

HOMEcoming
1966



STOLL FIELD • NOVEMBER 12, 1966 • OFFICIAL PROGRAM • 50c Est. Price .48
Tax02

EXCLUSIVELY
Dawahare's

- LEXINGTON
- WHITESBURG
- PIKEVILLE
- HAZARD
- NEON
- CORBIN

Gardenside Plaza



PLENTY FREE PARKING

STORE HOURS—10 a.m. 'til 9 p.m.

Monday thru Saturday

First National Charge

30 Day Charge—

6 Month Revolving Charge



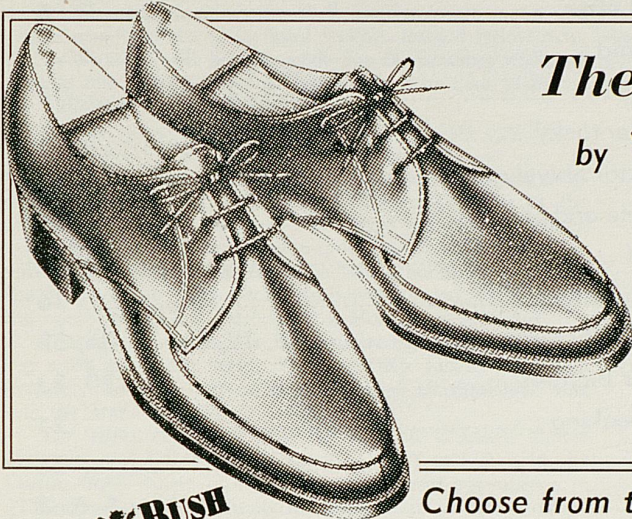
Also available at Dawahare's

WILDCAT BOOSTER TIES

Pure Silk



... PURCELL'S, Central Kentucky's
Headquarters For Fine Quality Shoes



The "WILDCAT"

by **WINTHROP** 
SHOES FOR MEN

13⁰⁰
pr.

- Black Slip-on
- Black Oxford
- Brown Oxford
- Sizes 6½-12, B to D

NUNN & BUSH
Hush Puppies
Town & Country Shoes

Choose from the Famous
Brands, plus many others

Edgerton
SHOES FOR MEN



Evans

Coach & Four 
The Shoe of Champions

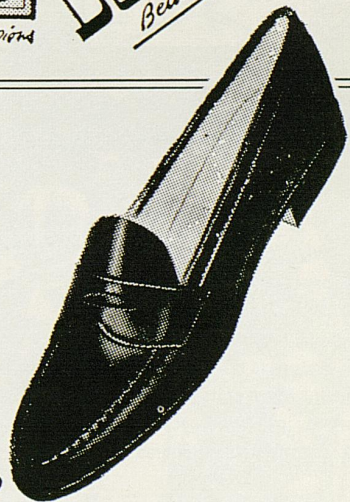
Capesio
DEBUTANTE
Beautiful Shoes

The "KITTEEN"

by **SPALDING**

14⁰⁰
pr.

- Black
- Brown
- 4½ To 10
- AAAA To B



Purcell's

CENTRAL KENTUCKY'S SMARTEST STORE SINCE 1887
SHOE CENTER — MAIN FLOOR

OFFICIAL WATCH FOR THIS GAME



LONGINES
THE WORLD'S
MOST HONORED
WATCH

10 WORLD'S FAIR
GRAND PRIZES
28 GOLD MEDALS

Longines watches are
recognized as **OFFICIAL**
for timing world
championships and Olympic
sports in all fields
throughout the world.



Longines 5-Star Admiral Automatic with Calendar.
All-Proof®, sweep-second, 14K gold strap—\$185.00

The Longines Credo

Every Longines watch,
whatever its type, for whatever
its use, today, as for almost
a century, is manufactured to
be the finest of its kind and
worthy in every respect to be called
The World's Most Honored Watch

LONGINES-WITTNAUER WATCH CO.
MONTREAL • NEW YORK • GENEVA
Maker of Watches of the Highest Character Since 1857

OFFICIAL UK FOOTBALL PROGRAM

CONTENTS

	Page
Game Story	5
Governor Breathitt	6
Homecoming Letter	8
President Oswald	9
Advance Schedules	10
Athletics At Kentucky	11
Athletics Director Shively	12
Varsity Schedule and Scores	14
Coaching Staff	15
Head Coach Bradshaw	16
Kentucky Player Pictures	18, 22, 26, 30, 34, 38
Houston Player Pictures	20, 33
Statistically Speaking	24
Rosters	28
Lineups	Center Spread
Depth Chart	29
Houston Administration	37
College Football Week	40
What Opponents Are Doing	42
Meet The Kittens	43
Southeastern Conference Schedule	44
The Changing Face of U.K.	46-47
Homecoming Preview	47
Band	49
Wildcat Coaches—Athletics Staff	50
Famed Alumnus Reviews 40 Years	52-53
Kentucky Basketball	54

OFFICIAL 1966 SOUVENIR FOOTBALL PROGRAM

Published by U.K. Athletics Association
Bernie A. Shively, Director of Athletics
Edited by Ken Kuhn
Director of Sports Information

Represented for National Advertising by
Spencer Advertising, Inc.
271 Madison Avenue, New York, N. Y.

Wildcat Gridiron News

KENTUCKY vs. HOUSTON

It's Homecoming Day on Stoll Field this afternoon and a time usually reserved for kind feelings toward fellow man, but celebration will be put aside for 60 minutes while all witness one of the toughest battles ever to take place on the hallowed ground of Stoll Field.

Due to square off in a scratching match are new-found rivals Kentucky and Houston.

On the surface of the matter, it gives all appearances of just another football game, but the complexities of the meeting go deeper and make it almost a "grudge" match—at least from Kentucky's standpoint. Although this game will be only the second time the two schools have met on the gridiron, the series background was formed in the opening encounter in the Astrodome at Houston a year ago.

That game, won by the Cougars by the innocent-appearing score of 38-21, went down in UK's history books as probably the most expensive meeting of all time and now sets the stage for today's return match.

The Houston victory over the favored Wildcats almost certainly cost UK a bid to spend New Year's Day in the Cotton Bowl—scene of their last post-season appearance in 1952. It also cost Kentucky the services of its star quarterback, Rick Norton, due to a knee injury and with him chances for success in the season finale against Tennessee a week later.

This humiliation sets the stage for today's battle—only the roles are reversed. Houston, which has rolled easily past all but one opponent this season, will be the favorite

this time around while the Blue Grass contingent plays the role of potential spoiler.

In its attempt to turn the tables on the Cougars, Kentucky will be relying on a revamped lineup that has rejuvenated its forces in the last three games. Georgia had to pull out all the stops to hold back the Wildcats, West Virginia was tied and almost beaten and Vanderbilt succumbed, 14-10. The changed face of Kentucky mainly is in the offensive platoon. In order to gain more punch to go along with the proud defense, Coach Charlie Bradshaw switched tailback Larry Seiple to wingback, moved big Bob Windsor from there to Seiple's vacated TB position and brought versatile sophomore Dicky Lyons up from defense to play at fullback.

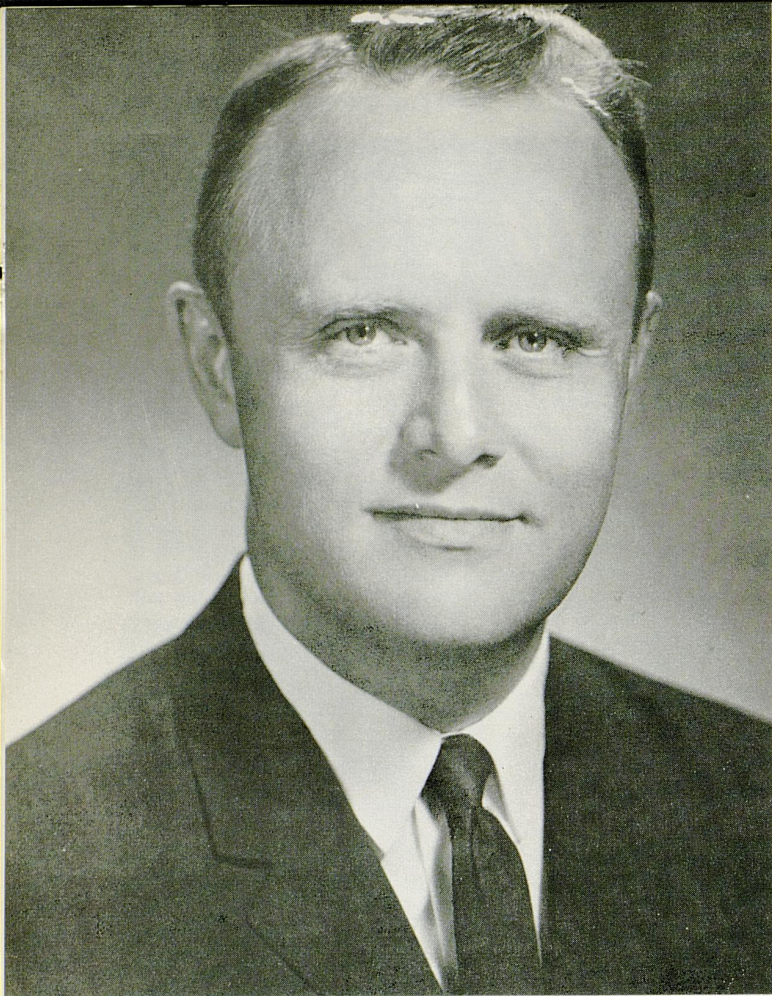
While the defense has come in for a major share of the glory in this frustrated season, the defenders appear to be in for a stiff challenge from the point happy Cougars. Houston has averaged 33 points a game to date in racking up a 6-1 record. In their last two games, the Cougars have rolled to scores of 48-9 and 73-14.

Their only setback came at the hands of Mississippi—the only mutual foe—who triumphed, 27-6. Kentucky went down to a 17-0 defeat by Ole Miss.

Houston is a versatile, opportunistic club that is able to put scores on the board effectively by almost any means, scouts report. The Cougars are particularly air-minded with speedster Warren McVea operating at halfback and Bo Burris on the throwing end at quarterback. Halfback Don Bean poses a serious threat as a punt return artist who returned five last week for a record 199 yards.

JUST 'BOBIN' ALONG—Kentucky's Bob Windsor (38) seems set to reel off a big gain against the Vanderbilt Commodores at the moment the photographer caught this action last Saturday. Leading the way for Windsor are fellow Wildcats Dicky Lyons (24) and Terry Beadles. UK won the important Southeastern Conference clash, 14-10.





the honorable
EDWARD T. BREATHITT

Governor of Kentucky

Alumnus Governor Boosts Wildcat Gridders . . .

Edward T. Breathitt, at 41, is the nation's second youngest Governor. A Hopkinsville attorney, he continues a family record of distinguished public service that dates back to pre-Civil War days when an ancestor, John Breathitt, served as the state's chief executive.

Governor Breathitt, who in his capacity as Governor, also serves as chairman of the University of Kentucky Board of Trustees, began his career as a lawyer and public servant immediately upon graduation from the University of Kentucky College of Law in 1950. At the age of 27, he was elected to the State House of Representatives. Later he was State Personnel Commissioner and a member of the State Public Service Commission before being elected to Kentucky's highest office in 1963.

While a student at the University of Kentucky, where he also obtained a degree in Commerce, he proved his capacity for leadership. While there, he was president of Lamp and Cross, senior men's honorary, and ODK, men's leadership and scholarship honorary fraternity.

His distinguished background also includes three years in the Army Air Force during World War II and the state presidency of the Young Democratic Clubs of Kentucky.

A native of Hopkinsville, he is married to the former Frances Holleman of Mayfield. They have four children—Mary Fran, who is 16; Linda, 15; Susan, 9; and Edward III, who is 7.

Governor Breathitt continues to be one of the most enthusiastic boosters of his Alma Mater and its football team.



CHEER FOR MILK'S VITALITY

Put Vitality on your team ... drink milk! A glass of cool, refreshing milk with meals and snacks helps see you through the busiest fall schedule. No other beverage helps you get the lasting energy found only in nature's Vitality drink... Milk. You'll cheer for milk's Vitality.

a message from dairy farmer members of



american
dairy
association

UNIVERSITY OF KENTUCKY

LEXINGTON, KENTUCKY 40506

November 12, 1966

JOHN W. OSWALD, PRESIDENT

Dear Alumni:

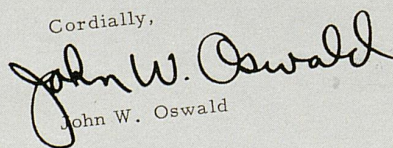
It gives me much pleasure to extend a warm and cordial welcome to our alumni who have returned to the campus today to share in our homecoming activities. The University is always glad to have you return but, for us, homecoming is one of the high points in our University calendar.

We hope that you will take the opportunity while you are here to walk about the campus and observe the many changes which have occurred since you were here for the homecoming activities last year. May I call your particular attention to our new Engineering Building, which was recently given a national merit award, the only building in the state to have been so recognized. Next year when you return to the campus for homecoming, our new classroom-office complex should be well on the way to completion and it is our hope that some of the buildings now on the drawing boards will be in the initial stages of construction.

Our enrollment on the University campus for this fall is 14,412, with a total University enrollment, including the Community College System, of 20,831. The growth in enrollment is greater than had been predicted but I am pleased to report that both the physical plant and the academic program of the institution are keeping pace with this increase. Many departments have been reorganized and strengthened in accordance with the mandates set forth in the Academic Plan recommended by the University Faculty and adopted by the Board of Trustees. We pledge our continuing efforts to the building of an even greater University of Kentucky; however, this goal cannot be attained without the interest and support of our alumni. None of the accomplishments to date could have occurred without your help and I am confident that we may rely upon your continuing loyalty and support in the future.

I hope that this homecoming will be a memorable one and may I extend to each of you a very special invitation to join Mrs. Oswald and me at the Alumni House immediately following the game so that we may greet you personally.

Cordially,


John W. Oswald



JOHN W. OSWALD
President
University of Kentucky



University's President Knows Value of An Athletic Program . . .

When Dr. John W. Oswald became the sixth president of the University of Kentucky on Sept. 1, 1963, he brought to the position most unique qualifications that have since aided immeasurably in his administration of one of the nation's foremost and fastest-growing educational institutions.

John Oswald's background reflects the highest standard of excellence in educational preparation and also includes experience in athletics at both the player and coach levels.

The 49-year-old educator, who was born in St. Paul, Minnesota, received his education in the public schools of La Grange, Ill., and at DePauw University where he was a Phi Beta Kappa graduate in 1938. He also did graduate work on the Davis and Berkeley campuses of the University of California, receiving the Ph.D. Degree in plant pathology in 1942.

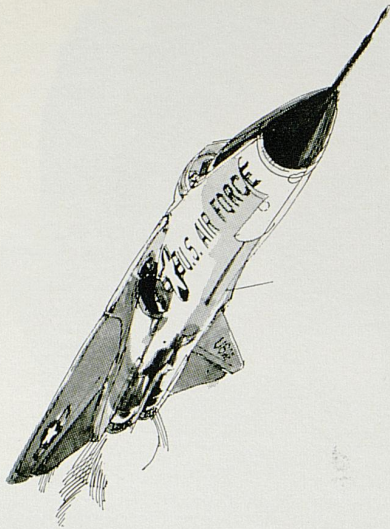
Following a World War II stint in the Navy as a PT boat captain and division commander, he returned to UC as a professor in his special field

and later rose through the administrative ranks to the position of Vice-President for Administration.

Dr. Oswald's athletic experience, that now stands him in good stead as president of a university boasting an ambitious athletic program, came as a player in his collegiate days at De Pauw as he played guard on the football team for three years and later at California's Davis campus—where he tried his hand at coaching (by avocation) the grid team for a brief period.

In 1962, he was named by Sports Illustrated on its Silver Anniversary All-America team, composed of former football players who achieved special prominence in their chosen professions.

Dr. Oswald is a staunch supporter of Kentucky's athletic teams and advocates a fair-minded approach that lends proper emphasis to the athletic program. UK athletics flourish within the proper perspective as an equal part of the total university.



Have astronauts made pilots old hat?

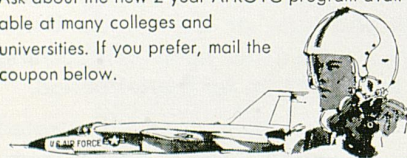
Sure, the boys who go off the "pads" get the big, bold headlines. But if you want to fly, the big opportunities are still with the aircraft that take off and land on several thousand feet of runway.

Who needs pilots? TAC does. And MAC. And SAC. And ADC.

There's a real future in Air Force flying. In years to come aircraft may fly higher, faster, and further than we dare dream of. But they'll be flying, with men who've had Air Force flight training at the controls. Of course the Air Force also has plenty of jobs for those who won't be flying. As one of the world's largest and most advanced research and development organizations, we have a continuing need for scientists and engineers.

Young college graduates in these fields will find that they'll have the opportunity to do work that is both interesting and important. The fact is, nowhere will you have greater latitude or responsibility *right from the start* than on the Aerospace Team — the U.S. Air Force!

Interested? The place to find out more is at the office of the Professor of Aerospace Studies, if there is an Air Force ROTC unit on your campus. Ask about the new 2-year AFROTC program available at many colleges and universities. If you prefer, mail the coupon below.



Air Force ROTC Maxwell Air Force Base, Ala. 36112	28
Name _____ Please Print	
College _____ Class of 19 _____	
Address _____	
City _____ State _____ Zip _____	

UNITED STATES AIR FORCE

KENTUCKY ADVANCE GRID SCHEDULES

1967

Date	Opponent	Site
Sept. 23	Indiana	Bloomington
Sept. 30	Mississippi	Lexington
Oct. 7	Auburn	Auburn
Oct. 14	Virginia Tech	Lexington
Oct. 21	Louisiana State	Baton Rouge
Oct. 28	Georgia	Lexington
Nov. 4	West Virginia	Lexington
Nov. 11	Vanderbilt	Nashville
Nov. 18	Florida	Gainesville
Nov. 25	Tennessee	Lexington

1968

Date	Opponent	Site
Sept. 21	Missouri	Lexington
Sept. 28	Mississippi	Away
Oct. 5	Auburn	Lexington
Oct. 12	Oregon State	Lexington
Oct. 19	Louisiana State	Baton Rouge
Oct. 26	Georgia	Lexington
Nov. 2	West Virginia	Morgantown
Nov. 9	Vanderbilt	Lexington
Nov. 16	Florida	Lexington
Nov. 23	Tennessee	Knoxville

1969

Date	Opponent	Site
Sept. 20	Indiana	Lexington
Sept. 27	Mississippi	Lexington
Oct. 4	Auburn	Auburn
Oct. 11	Virginia Tech	Blacksburg
Oct. 18	Louisiana State	Lexington
Oct. 25	Georgia	Athens
Nov. 1	West Virginia	Lexington
Nov. 8	Vanderbilt	Nashville
Nov. 15	Florida	Gainesville
Nov. 22	Tennessee	Lexington

— Athletics At Kentucky —

Kentucky's athletic program, a well-balanced and ambitious activity featuring inter-collegiate competition in ten different sports, is organized under the Department of Athletics and a corporation known as the University of Kentucky Athletics Association.

The program is conducted without overemphasis or sacrifice of educational objectives and in strict compliance with the rules of the University, the Southeastern Conference and the National Collegiate Athletic Association.

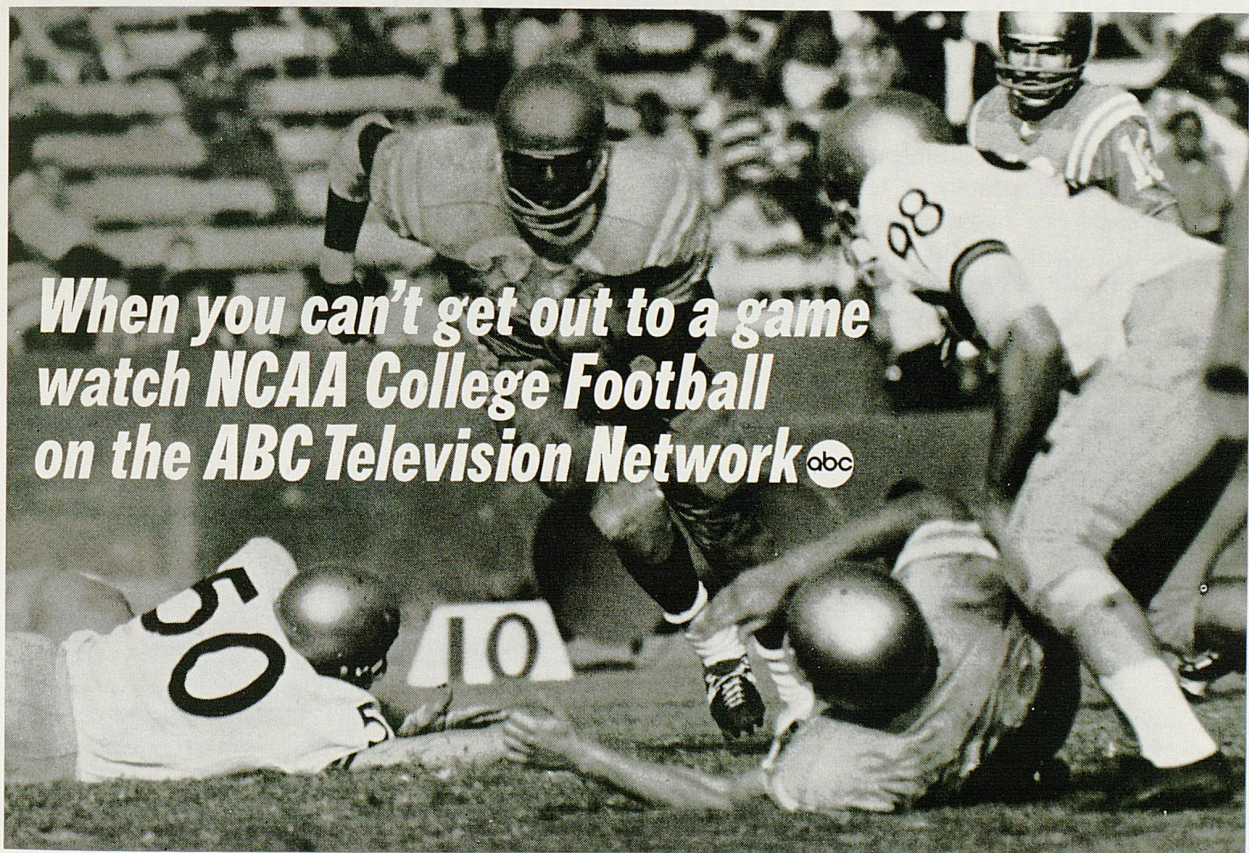
A board of directors, headed by University President John W. Oswald in the capacity of chairman, maintains overall policy supervision of the athletic program. Ex-officio members, in addition to the president, include Vice Presidents Robert Johnson and Glen Creech, Dr. W. L. Matthews in the capacity of secretary to the board, and a student representative—all appointed by the president. Twelve other men, drawn from the University faculty and the general public, also serve on the board as appointees of the president.


Supervising the steady growth and balanced

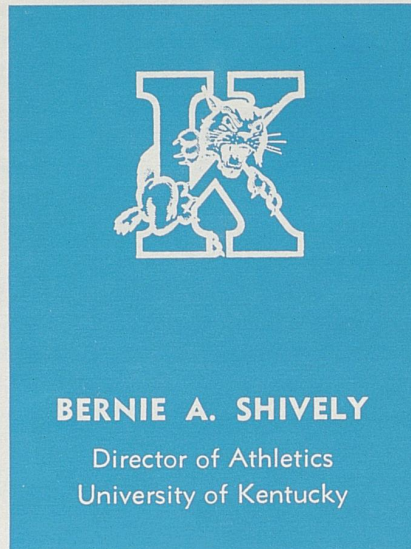
development of one of the nation's top athletic programs is Bernie A. Shively, a former Illinois grid All-American and a veteran of over 25 years in the post of Director of Athletics.

The Association's Board of Directors is composed of the following:

Dr. John W. Oswald, Chairman
Robert Johnson, Vice Chairman
Dr. W. L. Matthews, Jr., Secretary
Dr. Ralph Angelucci
Prof. David Blythe
Dr. Aubrey Brown
Dr. Loren Carlson
Dr. Thomas Clark
Dr. Glen Creech
Dr. John Douglas
Dr. Lyman Ginger
Dr. A. D. Kirwan
Carson Porter (Student)
Douglas Parrish
James H. Pence
Dr. Douglas Schwartz
Floyd Wright



**When you can't get out to a game
watch NCAA College Football
on the ABC Television Network **



Bernie Shively — A Veteran Administrator . . .

Behind every successful athletic program in the country today is a capable administrator who diligently attends the many and varied responsibilities connected with a big business operation.

University of Kentucky is fortunate to have the services of one of the nation's most widely-respected Directors of Athletics in the person of Bernie A. Shively. A veteran of 28 years on the job, "Shive" (as he is familiarly known to thousands of sports fans) is a tall, silver-haired, former football All-American who has gained widespread respect and recognition for his fair-minded guidance of a harmonious program that today features September to June activity in 10 different sports and involves the use of facilities valued at several million dollars.

In addition to a fair-minded policy direction that has resulted in "big time" stature for the school's athletic teams, Shively during his 28-year tenure has directly supervised major expansions in the physical plant designed to keep pace with the growing patronage by a sports-minded public. Among these have been the doubling of the seating capacity of Stoll Field, construction of a four-million-dollar coliseum and preparation of a spacious sports center to

provide top facilities for spring sports teams and football practice.

Shively's first claim to fame came during undergraduate days at University of Illinois as he achieved All-America recognition as a guard on the 1926 grid team made famous by teammate Red Grange. The future UK Athletic Director also won the Big 10 heavyweight wrestling title and lettered in track.

Following graduation in 1927, he accepted a position at UK as a line coach in football to start a long-time association. In the days since, he has served as head football coach for one year (1945), track and baseball coach and headed the physical education department.

Shively also has found time to be active in civic and alumni affairs and has attained national prominence through dedicated service in national athletic organizations. He currently holds membership in the powerful NCAA Executive Committee. Only recently, he completed a second term as chairman of the University Division NCAA Basketball Tournament Committee and formerly served with the NCAA Summer Baseball group.

A sure winner
for convenient
banking

Central
BANK & TRUST CO.

SHORT AND UPPER STREETS
LEXINGTON, KENTUCKY

Now In Lexington...

ONE OF THE SOUTH'S *Finest* Motels



- 110 Luxurious Rooms • Cocktail Lounge
- Banquet & Meeting Rooms • Two Dining Rooms
- Swimming Pool & Patio • Dancing Nitely



Imperial House Motel

U.S. 68 Waller Ave. at Harrodsburg Road
Phone 255-2540 for Reservations

1966 KENTUCKY FOOTBALL SCHEDULE AND RESULTS

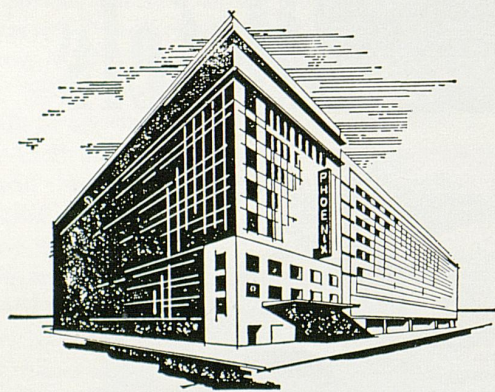
Date	Opponent	Site	UK	Opp.	Date	Opponent	Site	UK	Opp.
Sept. 17	*North Carolina (H)		10	0	Oct. 22	Georgia (A)		15	27
Sept. 24	*Mississippi (N)		0	17	Oct. 29	West Virginia (A)		14	14
Oct. 1	*Auburn (H)		17	7	Nov. 5	Vanderbilt (H)		14	10
Oct. 8	*Virginia Tech (H)		0	7	Nov. 12	Houston (HC)	Home		
Oct. 15	Louisiana State (H)		0	30	Nov. 19	Tennessee (TV).....	Away		

* Night game

Turf Catering Co.

*"Serving Keeneland Association, Breeders Sales,
Lexington Trots, and Oaklawn Jockey Club at
Hot Springs, Arkansas"*

Lexington's Largest and Finest!



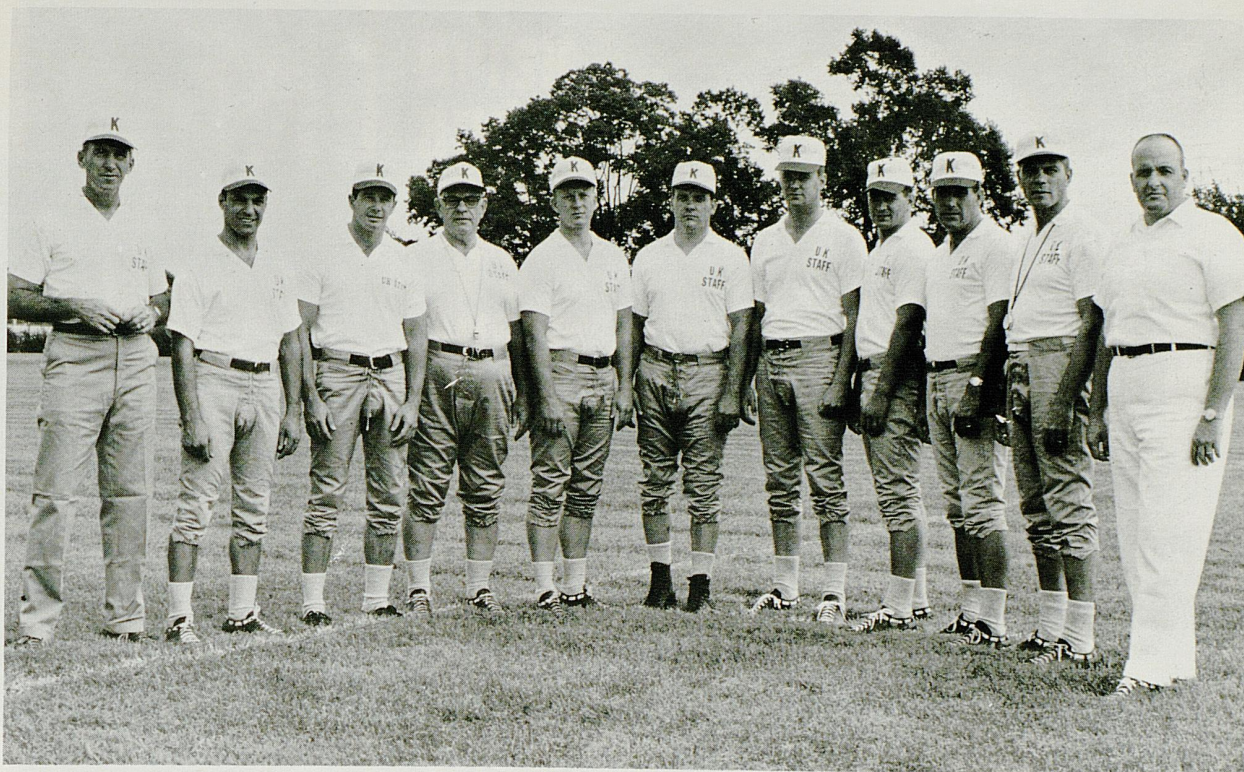
Kentucky's Convention
Headquarters
120 E. Main St.
Downtown Lexington, Ky.
Phone 255-3210

FEATURING

Le Deauville
RESTAURANT
and **LOUNGE**

- FREE PARKING
- BEVERAGE & FREE ICE MACHINE
ON EACH GUEST FLOOR
- 100% AIR CONDITIONED
- TV IN ALL ROOMS
- ALL ROOMS REMODELED
AND REDECORATED
- COFFEE SHOP AND DINING ROOM
WITH ECONOMICAL PRICES

PHOENIX HOTEL



Head Coach Charlie Bradshaw (left) poses with the aides who will be working with him in 1966. From the left, they include Phil Owen, Leon Fuller, Clarence Underwood, Wally English, Jim Poynter, Doug Shively, Charley Pell, Ray Callahan, George Sengel and Trainer Ralph Berlin.

Wildcat Coaching Staff

RAY CALLAHAN (Kentucky '56)—No stranger in state grid circles, Callahan is a former Kentucky back and guard from Lebanon who enjoyed a highly-successful coaching career in prep ranks following graduation . . . Prior to joining Bradshaw staff in 1963, he assisted at Versailles and Manual High and guided Danville to state AA title.

WALLY ENGLISH (Louisville '58)—A former quarterback for the U. of L. Cardinals, English works with the offensive backfield. He has a background of playing and coaching experience in Kentucky and Texas. First joined Bradshaw staff in 1965 as graduate assistant.

LEON FULLER (Alabama '61)—This new addition to the UK staff, who tutors the defensive backfield, played his final two seasons at Alabama when Bradshaw was an assistant. He won All-SEC honor as a defensive back and was named on the Academic All-America.

PHIL OWEN (Georgetown '53)—Like five other current Wildcat assistants, Owen entered collegiate coaching ranks by making Kentucky his first stop . . . Joined Bradshaw staff in 1964 after successful, nine-year tenure at Mt. Sterling High . . . He directs talented frosh team this season.

CHARLEY PELL (Alabama '63)—Entering his second season on the Kentucky staff, Pell enjoys the confidence of his new boss stemming from a three-year player and coach relationship while both were at Alabama . . . Works with the defensive interior line.

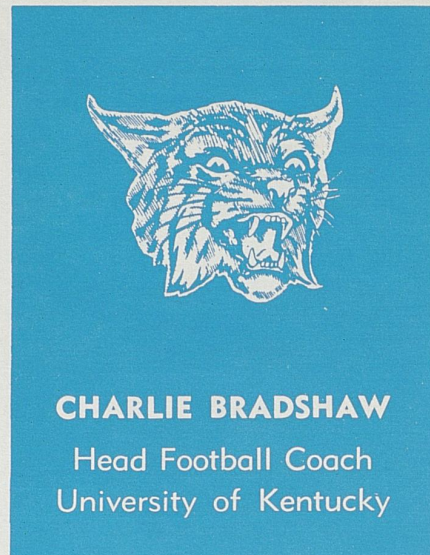
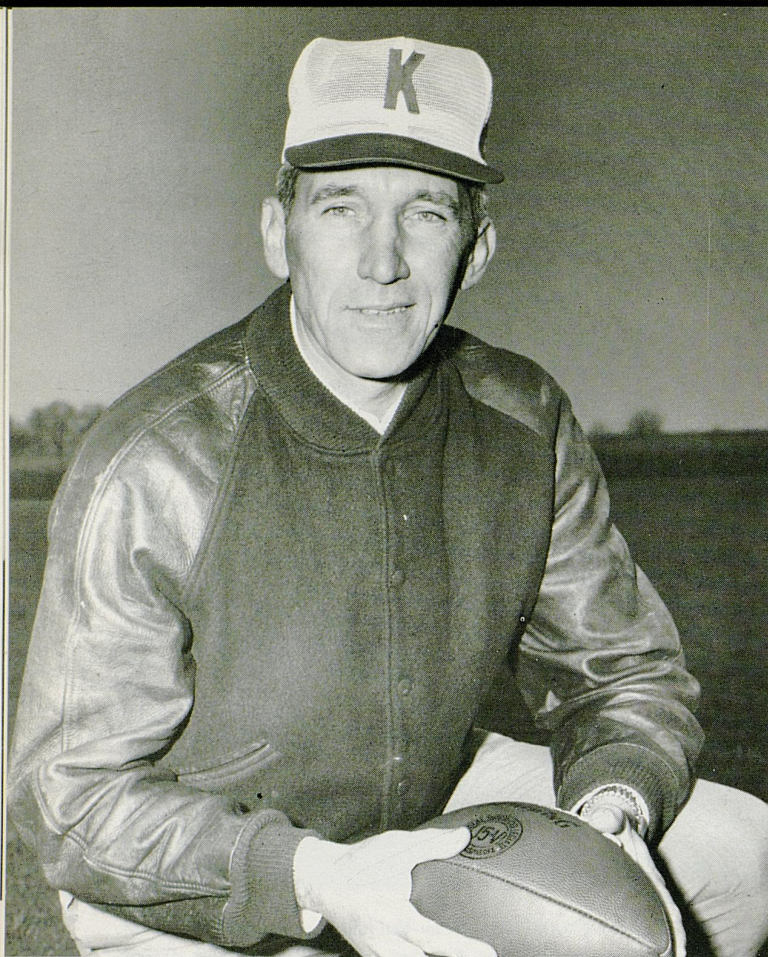
JIM POYNTER (Kentucky '61)—One of four former Wildcats on the staff, Poynter had a great high school coaching career before returning to UK early this year. In five seasons at three schools, his teams posted composite record of 40-10-1.

GEORGE SENDEL (Kentucky '48)—Louisvillian Sengel's career as a Wildcat wingman overlapped that of Coach Bradshaw by a couple of years and his former teammate asked Sengel to stay on the staff he had joined in 1961 . . . The 44-year-old Air Force vet had nine years of coaching schoolboy ranks in Florida and Kentucky prior to becoming UK end coach.

DOUG SHIVELY (Kentucky '59)—A youthful veteran of seven years in the coaching profession, Shively is a former Wildcat wingman and son of UK's Athletic Director. After one season at a Texas high school, Doug moved to Virginia Tech—his point of departure in coming to UK.

CLARENCE UNDERWOOD (Marshall '38)—Back "home" after 10-year absence, this tough-but-popular veterans has responsibility of shoring up UK defense. Spent 8 years here prior to successful 10-year stint at Jefferson High in Port Arthur, Texas. Compiled 77-26-6 record and was state "Coach of the Year."

RALPH BERLIN (Iowa State '62)—This 30-year-old Marine Corps veteran serves as head football trainer for the Wildcats . . . He's a veteran of six years in training field.



Wildcat Coach Sets Winning Tradition . . .

After four hectic years, Charlie Bradshaw stands high as a coach and gentleman fully vindicated in his promise to rebuild the shattered foundations of Kentucky football into a solid front and re-establish a winning tradition.

Exemplifying the faith placed in his hard work philosophy and procedures is the unique "lifetime" contract tendered the youthful and determined ex-Wildcat upon the successful (6-4) completion of an adversity-plagued 1965 season. The new pact, believed unique to college-coach relationships, assures Bradshaw of tenure similar to that given academic personnel. At such time as he ceases to perform his current coaching duties, he will have the opportunity to take another position on the University staff.

Bradshaw, a 41-year-old former UK end and assistant coach, returned to his alma mater in 1962 to take on the difficult task of repairing a sputtering Kentucky football machine that had not run well since the early fifties Bowl Era.

The magnitude of the repair job never will be fully understood by anyone less closely connected with it than the self-sacrificing Bradshaw. Only

he could take a positive approach to the almost impossible problems—and, more importantly, stick with it in the face of increasing odds. How he tackled the assignment of producing a winner out of the meager raw material reflects the type of person Charlie Bradshaw is—the personification of qualities of inner fortitude, outwardly serious demeanor, ability, confidence, integrity and quiet determination. He is an inspirational leader possessing the valuable trait of exuding enthusiasm and confidence to a degree that inspires those around him—players and assistants—to get the job done in a way that pays off with success. He demands great effort of himself and others in the belief that success cannot be purchased easily.

Bradshaw's influence not only is paying off with success on the gridiron—his 1965 team posted the school's best record since 1956—but also is being felt around the state. Coaches, alumni, general public and prospective Wildcats are rallying to the side of Bradshaw's long-range program in a fashion never before seen in the State of Kentucky.



**Brisk
and
Breezy
TV's
Biggest
Stars
Perform
on The
Mike
Douglas
Show ***



**4 P.M.
Daily
On**



Enjoy friendly service always . . .
FROM YOUR GOOD NEIGHBOR ASHLAND OIL DEALER



Yes, your Good Neighbor Ashland Oil Dealer offers friendly, helpful service and the finest petroleum products . . . like Ashland Vitalized Gasoline and Valvoline Motor Oil. And when you need tires, batteries or accessories, you can buy with confidence at an Ashland Oil Service Station—because your Good Neighbor Ashland Oil Dealer stands behind the products he sells.

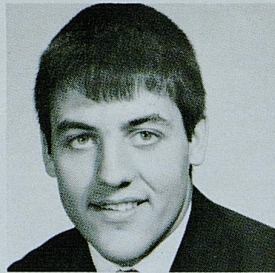
Drive in soon. Get to know your Good Neighbor Ashland Oil Dealer. You'll like his fine petroleum products and his fast, friendly, expert service.



ASHLAND OIL & REFINING COMPANY
Ashland, Kentucky



MIKE CASSITY



BILL CARTWRIGHT



JERRY DAVIS



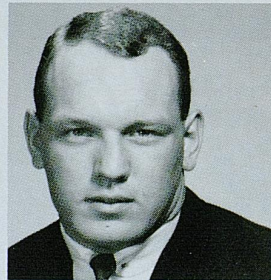
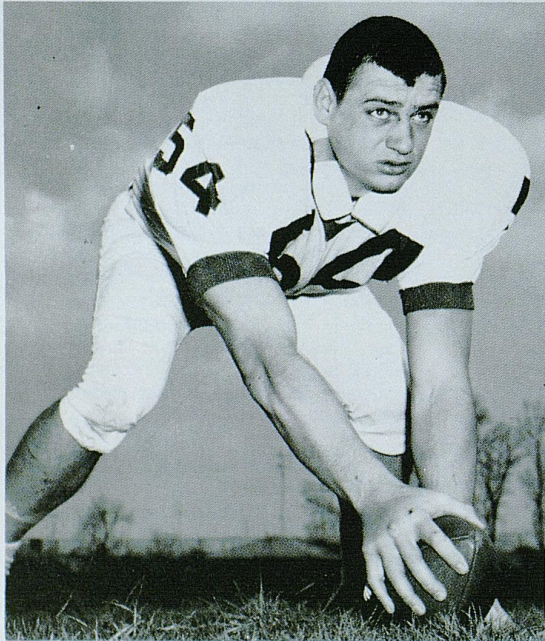
JOE CARROLL



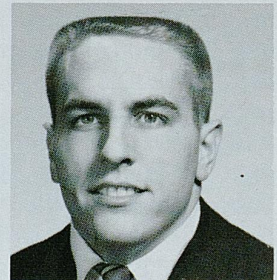
AL PHANEUF



CALVIN WITHROW



MIKE BEIRNE



BOB BARTKOW



CHUCK ARNOLD



TOM ANDERSON

YOUNG HO! GO CHEVRON!

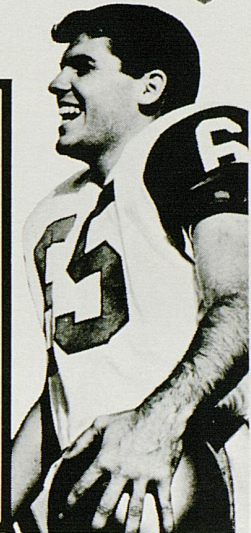


Follow the WILDCATS in '66



**ON THE
STANDARD OIL
RADIO NETWORK**

WVLK Lexington	WINN Louisville	WOMI Owensboro	WDXR Paducah
WCMJ Ashland	WIEL E. Town	WHOP Hpk'ville	WMLF Pineville
WLBK Bwl'g Green	WFKY Frankfort	WKIC Hazard	WPKE Pikeville
WCTT Corbin	WHIR Danville	WFTM Maysville	WKAY Glasgow
WSIP Paintsville	WNGO Mayfield	WSFC Somerset	



LEXINGTON'S #1 STATION YEAR after YEAR

CBS **WVLK** 590

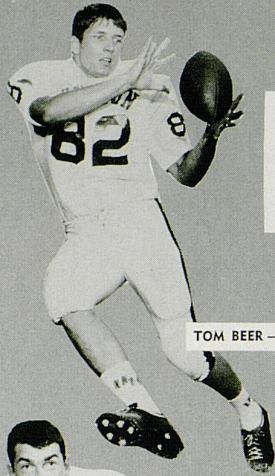
UK FOOTBALL
STANDARD OIL SPORTS NETWORK

- ★ Plus - "Pick-of-Dixie"
- ★ SEC Game of The Week
- ★ Cleveland Browns
- ★ Cincinnati Reds
- ★ ★ ★ ★ ★



CLAUDE SULLIVAN

COUGARS



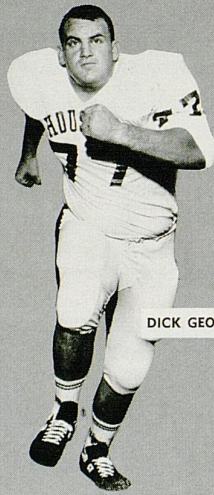
TOM BEER — OE



CARL CUNNINGHAM — DE



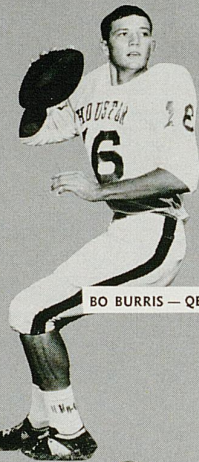
PAUL OTIS — DT



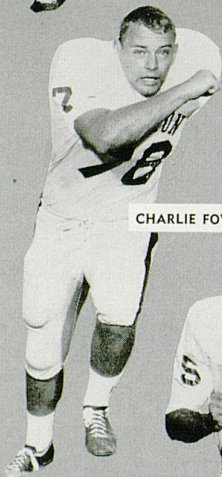
DICK GEORGE — DT



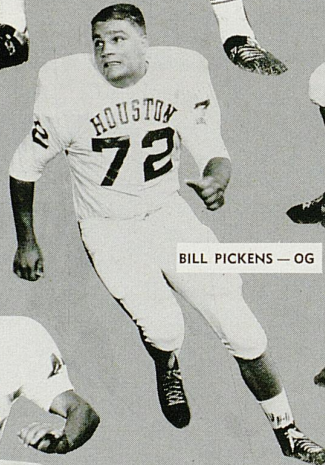
BILL CLOUD — OT



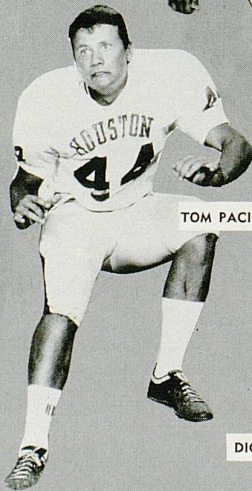
BO BURRIS — QB



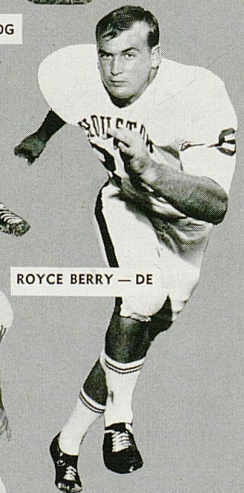
CHARLIE FOWLER — T



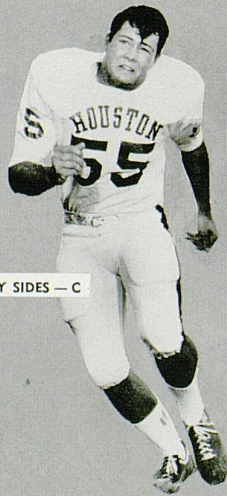
BILL PICKENS — OG



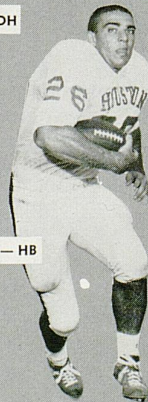
TOM PACIOREK — DH



ROYCE BERRY — DE



BARRY SIDES — C



DICK POST — HB

'SEATS ON
THE FIFTY-
YARD LINE'



EVERYDAY YOU
BANK WITH THE
WINNING 'TEAM' OF OVER
350 EMPLOYEES AT FIRST SECURITY ...
YOUR FULL-SERVICE BANK WITH
SEVEN CONVENIENT LOCATIONS.

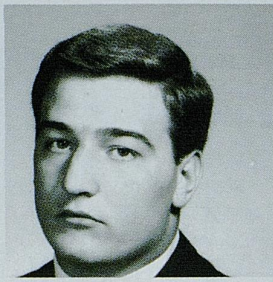
First Security
NATIONAL BANK AND TRUST COMPANY

Member FDIC

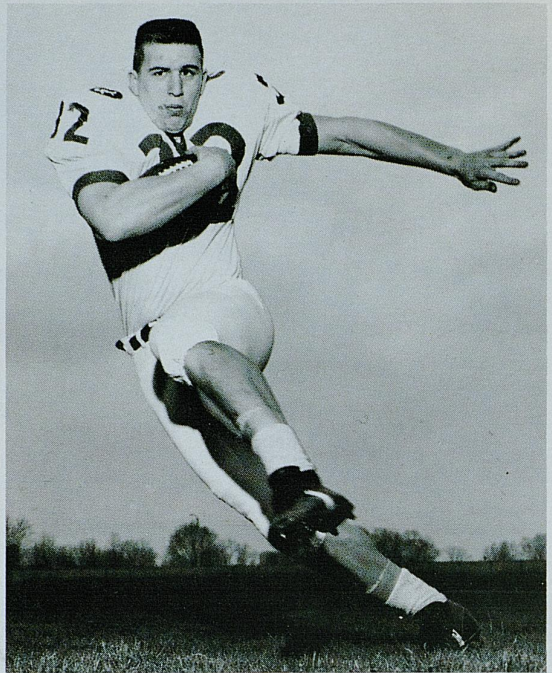
Member Federal Reserve System



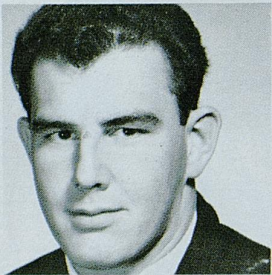
TOM FEE



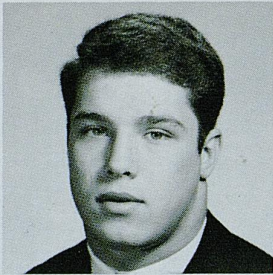
BOB FRIEBERT



LARRY SEIPLE



DENNIS DRINNEN

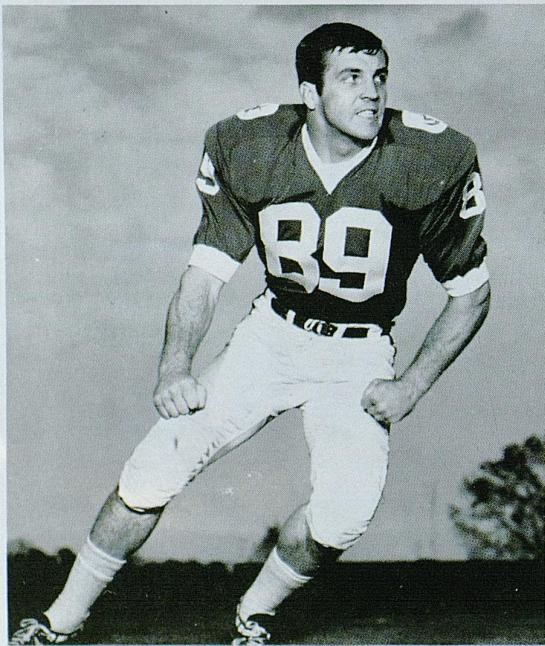


TOM FERGUSON

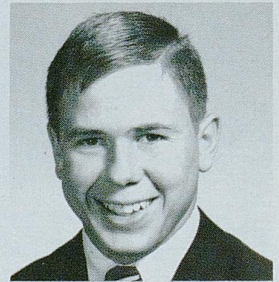


KENTUCKY

RICH MACHEL



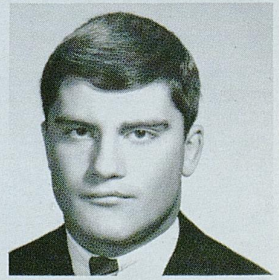
DON CHACOS



DAVID CHILDRE

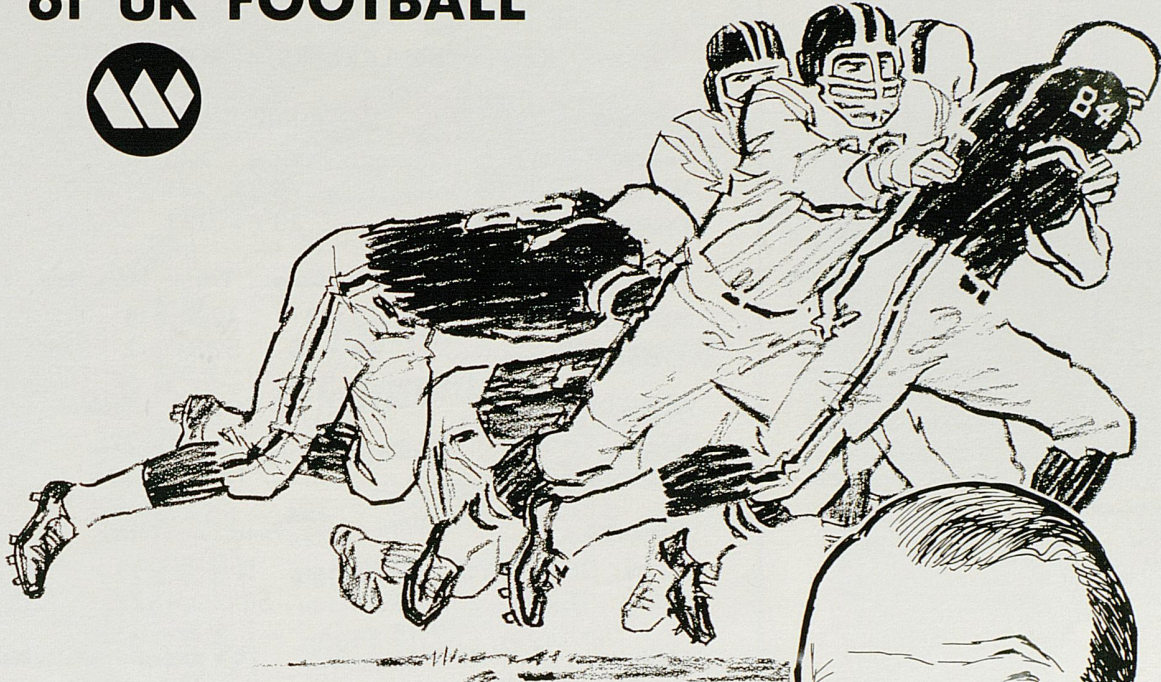


HOMER GOINS



ROD CLOYD

Hear the *GOING SOUND* of UK FOOTBALL



Follow the Wildcats with Cawood Ledford on 'H-A-S 840 Radio!



Cawood Calls Football

Before each game, Purnell's "Old Folks" Sausage sponsors a special program of football stories and interviews with sports director Cawood Ledford.

Football Warmup

Ten minutes prior to game time, Jerry's Drive-In Restaurants present Cawood with opponents' records, histories and rivalries.

EVERY UK FOOTBALL GAME

Cawood's play-by-play calls of UK football games are co-sponsored by Your Friendly SINCLAIR DEALER and EAST KENTUCKY Rural Electric Co-operatives.

S.E.C. FOOTBALL

Keep up with the Wildcats' opponents . . . exciting football every week.



WHAS 840 RADIO



W. H. Davis (left), Alcoa's General Manager—Industrial Relations, says: "We've found that Army ROTC graduates with active duty experience as officers possess better than average initiative, foresight, and responsibility. These are qualities we rate very highly, and we gladly pay a premium to get them."

Why did Alcoa hire Rod Wilson?

Because Alcoa needs men to fill key positions—men capable of moving to the top; men who seek and measure up to responsibility. Rod Wilson is that kind of man. An Army ROTC Distinguished Military Graduate at Colorado State University, Rod won an officer's commission in the Regular Army along with his degree. Forty-four months of active duty, including 16 months overseas as an artillery commander, earned Rod Wilson 24-carat credentials as a leader, a man schooled in the demanding disciplines of command, the kind of man Alcoa looks for.

If you're this kind of man, prove it to yourself, and to the companies like Alcoa who are looking for you. How? Get in Army ROTC. Stay with Army ROTC, all the way to success.

ARMY ROTC

STATISTICALLY SPEAKING

KENTUCKY LEADERS — 8 GAMES

RUSHING	Carries	Gain	Avg.	TD's
Seiple, TB-WB	78	245	3.1	1
Windsor, WB-TB	75	241	3.2	1
Lyons, HB-TB-FB	38	111	2.9	1

PASSING	Att.	Comp.	Pct.	Int.	Gain	TD's
Beadles, QB	73	31	42.5	8	410	4
Walz, QB	44	25	52.3	2	276	0

RECEIVING	Caught	Yards	TD's
Seiple, TB-WB	20	278	4
Spanish, E	18	304	0

PUNTING	Punts	Yards	Avg.
Lyons, DHB-TB-FB	5	208	41.6
Seiple, TB-WB	50	1872	37.4

SCORING	TD's	Convs.	FG's	Points
Seiple, TB-WB	5	2	0	34
Arnold, KS	0	6-6	2-5	12

(Four others have six points apiece)

HOUSTON LEADERS — 7 GAMES

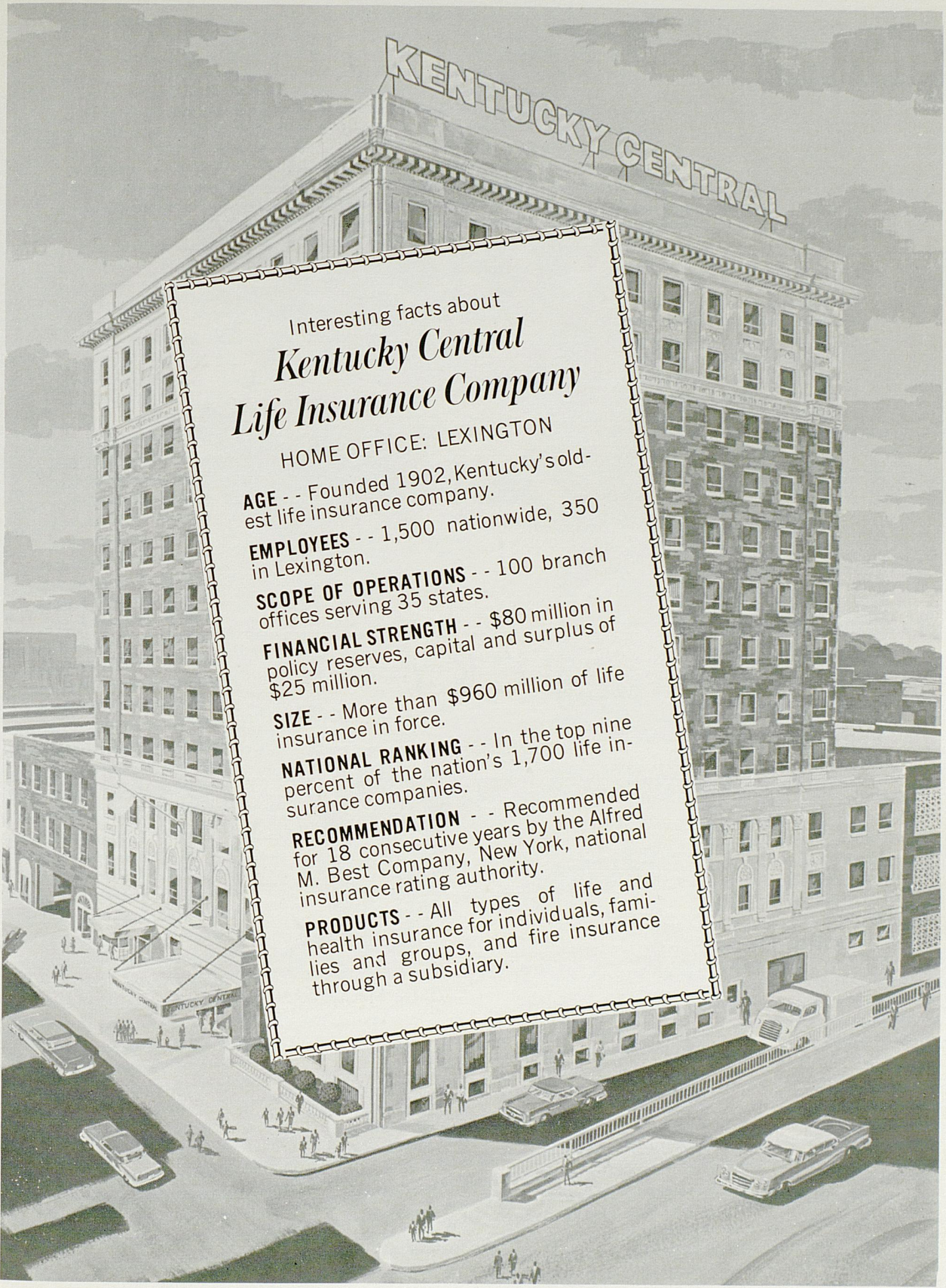
RUSHING	Carries	Gain	Avg.	TD's
Post, FB	107	550	5.1	4
McVea, HB	32	284	8.9	1
Nordgren, HB	36	235	6.5	4

PASSING	Att.	Comp.	Pct.	Int.	Gain	TD's
Burriss, QB	141	69	48.9	0	1258	16

RECEIVING	Caught	Yards	TD's
Hebert, E	22	510	6
Beer, E	18	205	4
McVea, HB	12	371	3

PUNTING	Punts	Yards	Avg.
Hebert, E	72	1355	42.4

SCORING	TD's	Convs.	FG's	Points
Hebert, E	6	31-32	1-5	70
Post, FB	7	0	0	42



Interesting facts about
Kentucky Central
Life Insurance Company

HOME OFFICE: LEXINGTON

AGE - - Founded 1902, Kentucky's oldest life insurance company.

EMPLOYEES - - 1,500 nationwide, 350 in Lexington.

SCOPE OF OPERATIONS - - 100 branch offices serving 35 states.

FINANCIAL STRENGTH - - \$80 million in policy reserves, capital and surplus of \$25 million.

SIZE - - More than \$960 million of life insurance in force.

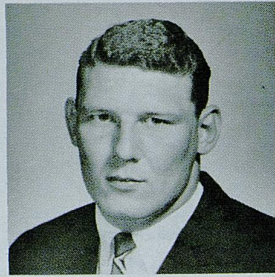
NATIONAL RANKING - - In the top nine percent of the nation's 1,700 life insurance companies.

RECOMMENDATION - - Recommended for 18 consecutive years by the Alfred M. Best Company, New York, national insurance rating authority.

PRODUCTS - - All types of life and health insurance for individuals, families and groups, and fire insurance through a subsidiary.



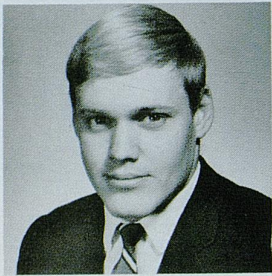
JACK GAWLER



RONNIE ROBERTS



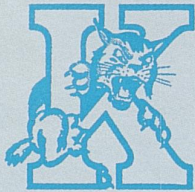
MIKE McGRAW



KERRY CURLING

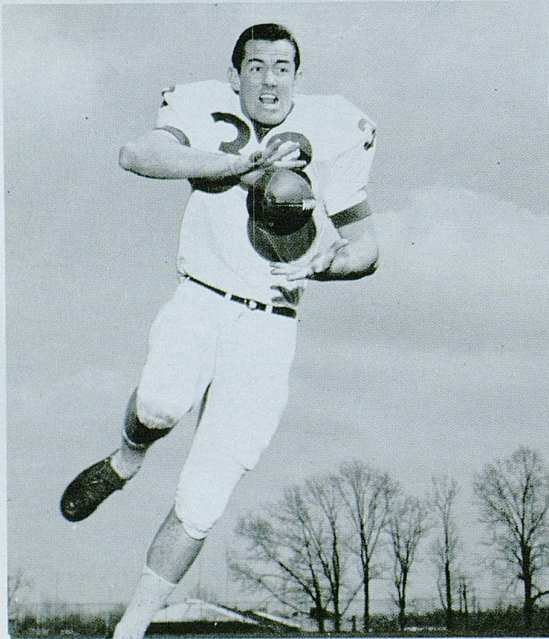


GEORGE KATZENBACH

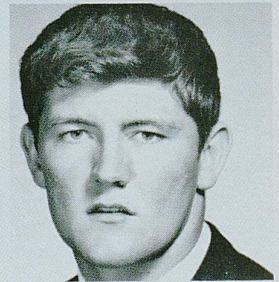


ENTUCKY

BOB WINDSOR



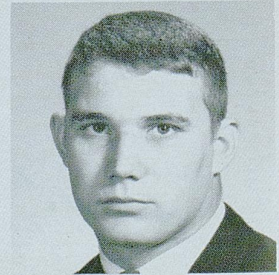
GEORGE McCLELLAN



DWIGHT LITTLE



DOYLE KING



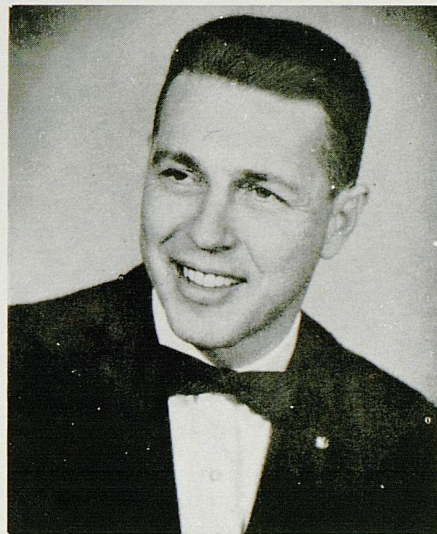
BASIL MULLINS



WBLG presents KENTUCKY FOOTBALL

BILL SORRELL

Play-by-Play
Announcing
of All Games



GEORGE CONLEY

Color and comment on
the broadcasts of all home games

BROADCASTS OF ALL U.K. GAMES PRESENTED BY

FRISCH'S
DRIVE-IN RESTAURANTS

DIXIE-BELL
DAIRY

SEVEN-UP

AMERICAN
DAIRY ASSOCIATION

DAWAHARE'S
DEPARTMENT STORE

MEADOW GOLD
DAIRY

WBLG

the BLue Grass station • dial 1300

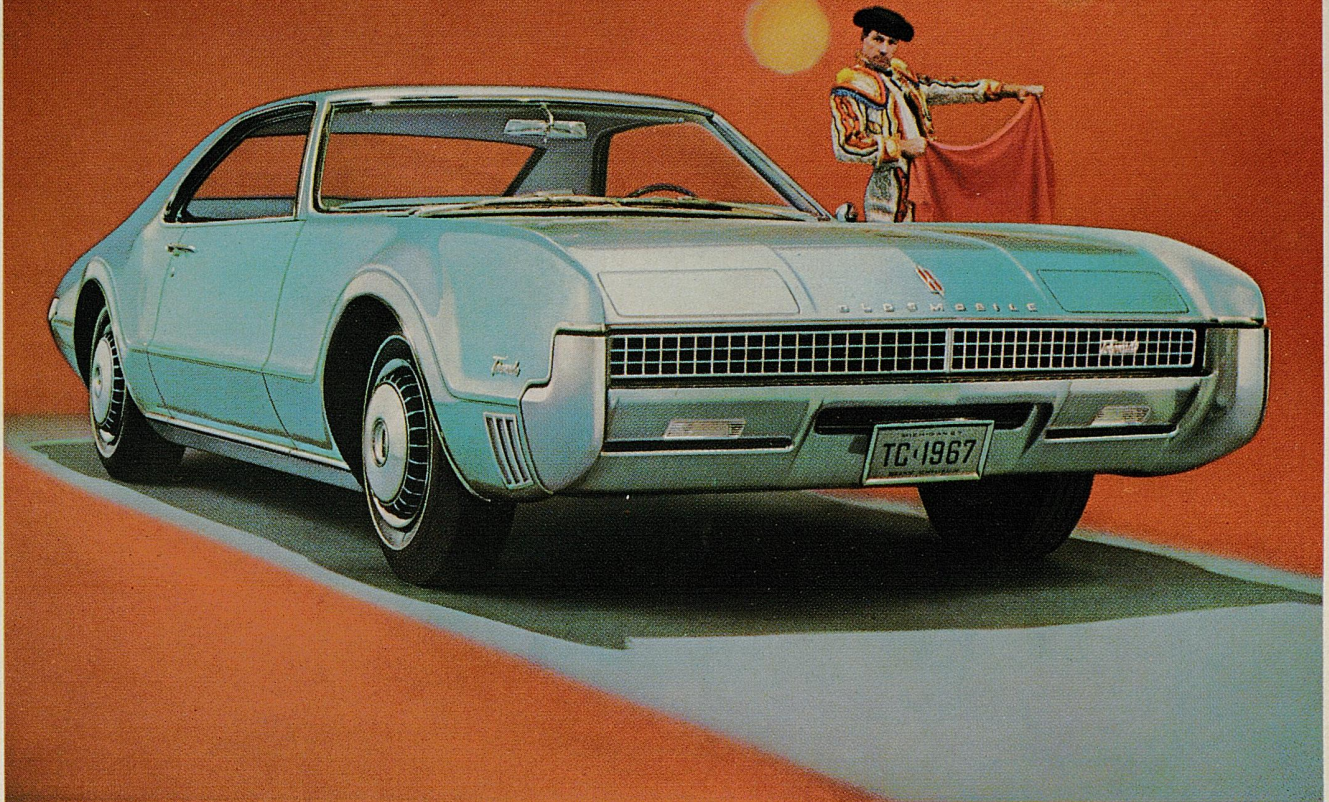
HOUSTON

11	Dick Woodall, Jr., QB	21	6-1	190	Houston, Tex.
14	Mike Barbour, Jr., LB	21	5-10	190	Houston, Tex.
16	Bo Burris, Sr., QB	21	6-2	195	Lake Jackson, Tex.
17	Gus Holloman, Jr., S	20	6-2	190	Beaumont, Tex.
20	Jim Berger, Jr., DHB	20	5-11	165	Weimar, Tex.
22	Don Bean, Jr., F-SE	19	5-8	168	Beaumont, Tex.
23	Ken Hebert, Jr., SE	21	5-11	195	Pampa, Tex.
24	Dick Spratt, Sr., DHB	21	5-11	175	Sharyland, Tex.
25	Mike Simpson, Soph., DHB	19	5-9	165	Pt. Neches, Tex.
26	Dick Post, Sr., HB	20	5-9	195	Pauls Valley, Okla.
27	Wade Phillips, Soph., LB	19	6-0	203	Pt. Neches, Tex.
30	J. B. Keys, Jr., HB	22	5-10	190	Hamtramck, Mich.
31	Dough Matthews, Soph., FLK	19	6-1	190	Corpus Christi, Tex.
32	Robbie Williams, Jr., FB	21	6-3	205	Texas City, Tex.
33	Bill Hollon, Jr., DHB	20	5-10	184	Elsa, Tex.
35	George Nordgren, Jr., FB	21	5-11	212	Covington, La.
37	Johnny Peacock, Soph., DHB	19	6-2	194	Goliad, Tex.
39	Bill Liebe, Soph., FB	20	6-0	195	Mission, Tex.
41	Mike Johnston, Soph., FB	19	5-11	190	Hull-Daisetta, Tex.
42	Warren McVea, Jr., HB	20	5-9	180	San Antonio, Tex.
43	Paul Shires, Soph., DHB	20	6-1	195	San Antonio, Tex.
44	Tom Paciorek, Jr., S	19	6-2	210	Detroit, Mich.
45	Phil Woodring, Soph., DHB	20	6-1	200	Lefors, Tex.
46	Paul Gipson, Soph., HB	20	6-0	200	Conroe, Tex.
51	Skippy Spruill, Soph., LB	19	6-2	255	Odessa, Tex.
53	Greg Brezina, Jr., LB	20	6-1	209	Louse, Tex.
55	Barry Sides, Sr., C	21	6-1	208	Houston, Tex.
60	Cliff Larson, Soph., DT	19	6-3	242	Beaumont, Tex.
62	Pat Pryor, South, C	20	6-0	200	Texas City, Tex.
63	Jim Arthur, Soph., LB	19	6-0	200	Pampa, Tex.
64	Larry Perez, Jr., OG	25	5-10	217	Archbald, Pa.
65	Jerry Gardner, Soph., LB	18	6-1	200	Galena Park, Tex.
66	Don Patrick, Soph., OG	19	6-1	230	Bishop, Tex.
67	Rich Stotter, Jr., OG	21	5-11	225	Cleveland, Ohio
68	Mike Smith, Soph., OG	20	5-11	210	Bossier City, La.
70	Bill Cloud, Soph., OT	19	6-2	239	Galena Park, Tex.
71	Paul Otis, Sr., DT	22	6-3	245	Channeleview, Tex.
72	Bill Pickens, Jr., OG	20	6-1	230	Alvin, Tex.
73	David Schneider, Soph., OG	19	6-4	235	Columbus, Tex.
74	Eddie Thompson, Soph., DT	20	6-5	295	Ft. Worth, Tex.
76	Chuck Odom, Soph., OT	24	6-5	248	Eunice, La.
78	Charlie Fowler, Sr., OT	21	6-2	262	Hendersonville, Tenn.
79	Charles Tyner, Soph., C	19	6-6	240	Longview, Tex.
81	Carl Cunningham, Sr., DE	22	6-3	230	Houston, Tex.
82	Tom Beer, Sr., OE	21	6-4	230	Detroit, Mich.
83	Paul Daulong, Soph., OE	19	6-1	210	Galveston, Tex.
86	Jim Dyar, Sr., DE	22	6-3	220	Enterprise, Ala.
88	Royce Berry, Jr., DE	20	6-3	230	Odessa, Tex.
89	George Caraway, Soph., DE	19	6-3	215	Pt. Neches, Tex.
90	Larry Satcher, Jr., LB	20	6-1	198	San Antonio, Tex.

KENTUCKY

12	Roger Walz, Sr., QB	22	5-10	171	Ft. Thomas, Ky.
14	Terry Beadles, Jr., QB	20	5-11	192	Fulton, Ky.
15	Tom Ferguson, Soph., LB	19	5-11	182	Ashland, Ky.
16	Bob Barkow, Sr., QB	21	6-0	187	Rockville, Md.
17	Jim Prather, Soph., QB	19	6-0	186	Cincinnati, Ohio
18	Rod Clloyd, Soph., DHB	19	6-0	193	Lawrenceburg, Ky.
21	Mike Granato, Soph., SAF	20	6-1	180	Cumberland, Ky.
22	Tom Fee, Jr., DHB	21	5-9	171	Uniontown, Pa.
23	Homer Goins, Jr., TB	22	5-11	191	Everts, Ky.
24	Dicky Lyons, Soph., DHB-FB	19	6-0	183	Louisville, Ky.
25	Jerry Davis, Sr., SAF	22	5-10	180	Fairborn, Ohio
30	Don Chacos, Soph., WB	19	6-2	186	Bethesda, Md.
32	Larry Seiple, Sr., TB-WB	21	5-11	205	Allentown, Pa.
33	Steve Gray, Soph., DHB	19	6-2	189	Detroit, Mich.
34	Al Phaneuf, Soph., DHB	22	6-0	190	Montreal, Quebec
36	Joe Carroll, Jr., FB	21	5-9	185	Sharon Hill, Pa.
38	Bob Windsor, Sr., WB-TB	24	6-4	216	Silver Spring, Md.
40	Mike McGraw, Sr., LB	21	5-11	205	Ft. Thomas, Ky.
41	Don Britton, Jr., FB	22	5-10	199	Broomall, Pa.
42	Kerry Curling, Jr., DG	20	5-10	189	Princeton, Ky.
43	Rodger Hart, Jr., LB	21	5-9	178	Albertville, Ala.
44	Bill Jansen, Soph., LB	19	5-11	188	Louisville, Ky.
45	George McClellan, Jr., LB	23	5-10	180	Bristol, Tenn.
46	Ken Wood, Soph., LB	19	6-0	193	Montgomery, Ala.
50	John Harris, Soph., LB-C	19	6-2	200	Highland Park, Ill.
51	Bill Cartwright, Soph., C	19	6-0	203	Princeton, Ky.
52	Eddie Ingram, Soph., C-G	20	5-10	185	Dyersburg, Tenn.
54	Calvin Withrow, Sr., C	21	6-0	218	Kettering, Ohio
55	Ronnie Roberts, Jr., LB	20	6-3	225	Louisville, Ky.
60	Mike Beirne, Jr., OG	20	6-1	206	McKeesport, Pa.
61	Mike Cassidy, Jr., OG	21	6-2	210	Xenia, Ohio
62	David Childre, Soph., OG	18	6-0	188	Henderson, Ky.
63	Doyle King, Soph., DT	19	6-1	214	Mt. Sterling, Ky.
64	Rich Machel, Sr., DG	21	6-1	202	Pittsburgh, Pa.
65	Jim Gresham, Jr., DG-DT	20	6-0	223	Jeffersonville, Ind.
66	Weslev Nails, Soph., OG	20	6-2	222	Loyal, Ky.
67	Louis Wolf, Soph., OG	19	5-11	192	Louisville, Ky.
68	Ed Zaremba, Soph., DT	19	6-2	203	Parma, Ohio
69	Dick Palmer, Soph., DG-DT	19	6-1	208	Huntsville, Ala.
71	Bob Frieber, Soph., OT	19	6-2	213	Louisville, Ky.
72	Jack Gawler, Jr., DT	20	6-1	235	Rockville, Md.
73	Marty Joyce, Soph., DT	19	6-1	236	Wilmington, Del.
74	Dennis Drinnen, Soph., OT	19	6-1	224	Loveland, Ohio
75	Scott Valentine, Soph., OT	19	6-0	220	Fairfax, Va.
76	Dwight Little, Jr., OT	20	6-3	226	Marion, Ky.
77	Leonard Rush, Soph., OT	19	6-2	226	Hamilton, Ohio
78	Basil Mullins, Sr., DT	22	6-4	215	Paintsville, Ky.
79	George Katzenbach, Soph., DT	20	6-1	227	Philadelphia, Pa.
80	Phil Greer, Soph., OE	19	6-2	192	Burdine, Ky.
81	Tom Anderson, Jr., DE-OE	22	6-0	177	Birmingham, Ala.
82	Don Spanish, Sr., OE	21	5-10	195	New Castle, Pa.
83	Derek Patter, Soph., OE	19	6-2	199	Elkhorn City, Ky.
84	Tommy Sauer, Soph., OE	20	5-11	189	Owensboro, Ky.
85	Jim Swart, Sr., DE	21	6-2	224	Louisville, Ky.
86	Joe David Smith, Sr., DE	21	6-1	205	Mayfield, Ky.
87	Doug Van Meter, Jr., DE	20	6-0	200	Owensboro, Ky.
88	Jeff Van Note, Soph., DE	20	6-1	210	Anchorage, Ky.
89	John Zeles, Soph., DE-OE	20	6-2	191	Phoenixville, Pa.
90	Chuck Arnold, Sr., KS	21	6-1	210	Howell, Mich.

The Rocket Action Cars are out front again!



After you've walked off with all the honors,
what do you do for an encore?

Meet Olds Toronado—'67 edition.

Awards for this. Awards for that. Awards for just about everything. But rest on its laurels? Not Toronado. Swinging new look outside. Posh new detailing inside. Doors with torsion-bar spring assists that open easier than ever to the flat-floored, room-for-six interior. Even that fabulous front-wheel-drive ride is smoother and quieter for '67. And front disc brakes and radial ply tires are available. Trend-setting Toronado: Proved and applauded by tens of thousands of satisfied owners. Greater than ever the second time around!

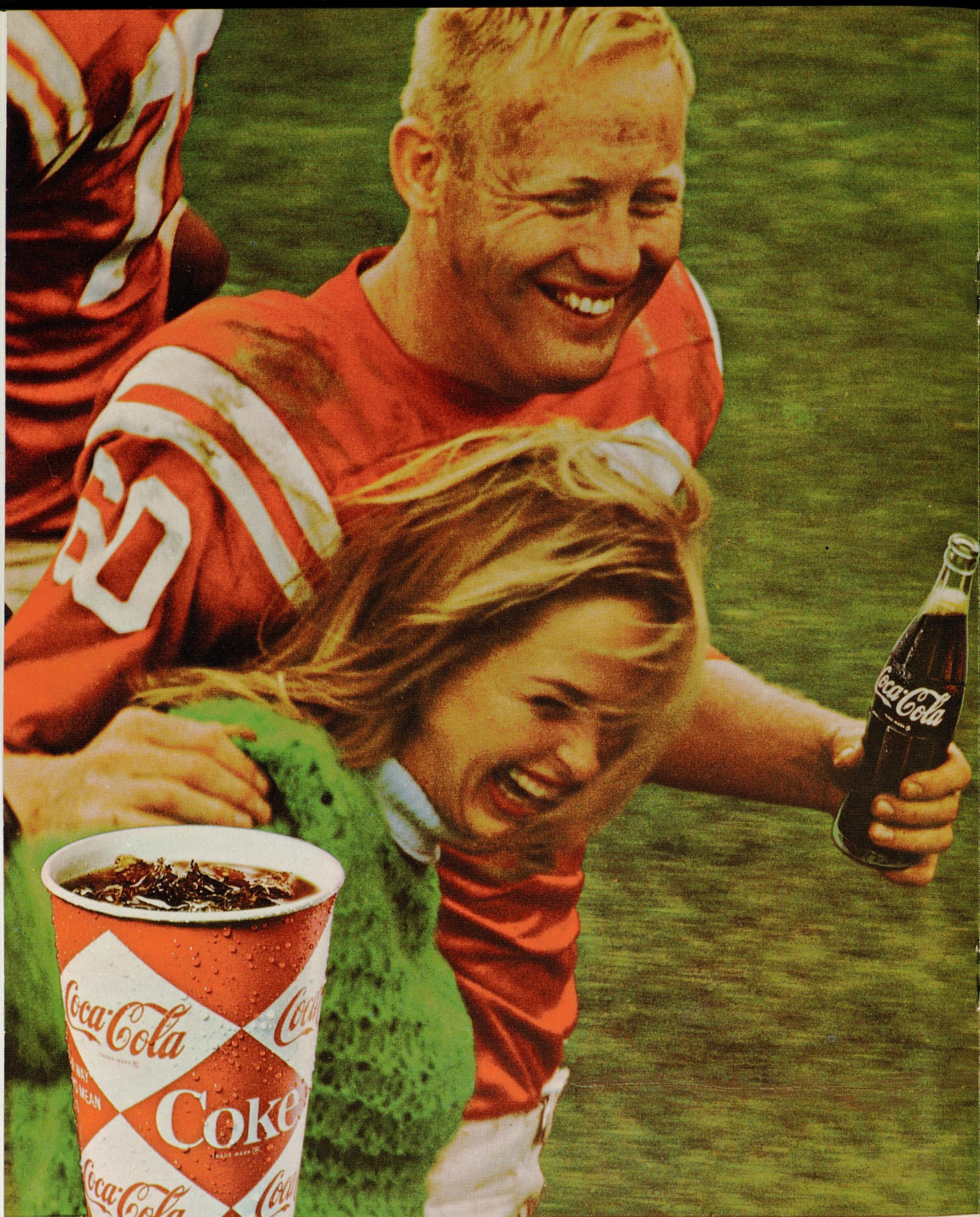
**OBEY
LAWS
DRIVE
SAFELY**

Olds thinks of your safety, too, with the GM-developed energy-absorbing steering column that can compress on severe impact up to 8½ inches, with four-way hazard warning flasher; outside rearview mirror; dual master cylinder brake system, plus many other safety features—all standard for '67.

Engineered for excitement . . . Toronado-style!

'67 OLDSMOBILE





things go
better
with
Coke
TRADE MARK ®

FOR THE TASTE YOU

OFFENSE

23 KEN HEBERT SE
 70 BILL CLOUD LT
 67 RICH STOTTER LG
 55 BARRY SIDES C
 72 BILL PICKENS RG
 78 CHARLIE FOWLER RT
 82 TOM BEER TE
 16 BO BURRIS QB
 42 WARREN McVEA HB
 22 DON BEAN FLK
 26 DICK POST FB

DEFENSE

87 DOUG VAN METER LE
 65 JIM GRESHAM LT
 42 KERRY CURLING MG
 79 GEORGE KATZENBACH RT
 88 JEFF VAN NOTE RE
 44 BILL JANSEN LB
 55 RONNIE ROBERTS LB
 43 ROGER HART LB
 34 AL PHANEUF LH
 25 JERRY DAVIS SAF
 22 TOM FEE RH

Houston

DEFENSE

89 GEORGE CARAWAY LE
 86 JIM DYAR LT
 71 PAUL OTIS RT
 81 CARL CUNNINGHAM RE
 53 GREG BREZINA LLB
 51 SKIPPY SPRUILL MLB
 27 WADE PHILLIPS RLB
 37 JOHNNY PEACOCK LH
 44 TOM PACIOREK LS
 17 GUS HOLLOMON RS
 24 DICK SPRATT RH

Kentucky

OFFENSE

82 DAN SPANISH QE
 76 DWIGHT LITTLE QT
 64 RICH MACHEL QG
 51 BILL CARTWRIGHT C
 61 MIKE CASSITY SG
 78 BASIL MULLINS ST
 86 J. D. SMITH SE
 14 TERRY BEADLES QB
 38 BOB WINDSOR TB
 32 LARRY SEIPLE WB
 24 DICKY LYONS FB

COUGAR SQUAD

11 Woodall, QB	53 Brezina, LB
14 Barbour, LB	55 Sides, C
16 Burris, QB	60 Larson, DT
17 Hollomon, S	62 Pryor, C
20 Berger, DHB	63 Arthur, LB
22 Bean, F-SE	64 Perez, OG
23 Hebert, SE	65 Gardner, LB
24 Spratt, DHB	66 Patrick, OG
25 Simpson, DHB	67 Stotter, OG
26 Post, HB	68 Smith, OG
27 Phillips, LB	70 Cloud, OT
30 Keys, HB	71 Otis, DT
31 Matthews, FLK	72 Pickens, OG
32 Williams, FB	73 Schneider, OG
33 Hollon, DHB	74 Thompson, DT
35 Nordgren, FB	76 Odom, OT
37 Peacock, DHB	78 Fowler, OT
39 Liebe, FB	79 Tyner, C
41 Johnston, FB	81 Cunningham, DE
42 McVea, HB	82 Beer, OE
43 Shires, DHB	83 Daulong, OE
44 Paciorek, S	86 Dyar, DE
45 Woodring, DHB	88 Berry, DE
46 Gipson, HB	89 Caraway, DE
51 Spruill, LB	90 Satcher, LB

WILDCAT SQUAD

12 Walz, QB	61 Cassity, OG
14 Beadles, QB	62 Childre, OG
15 Ferguson, LB	63 King, DT
16 Bartkow, QB	64 Machel, MG
17 Prather, QB	65 Gresham, DG-DT
18 Cloyd, DHB	66 Nails, OG
21 Granato, SAF	67 Wolf, OG
22 Fee, DHB	68 Zaremba, DT
23 Goins, TB	69 Palmer, DG-DT
24 Lyons, DHB-FB	71 Friebert, OT
25 Davis, SAF	72 Gawler, DT
30 Chacos, WB	73 Joyce, DT
32 Seiple, TB-WB	74 Drinnen, OT
33 Gray, DHB	75 Valentine, OT
34 Phaneuf, DHB	76 Little, OT
36 Carroll, FB	77 Rush, OT
38 Windsor, WB-TB	78 Mullins, DT
40 McGraw, LB	79 Katzenbach, DT
41 Britton, FB	80 Greer, OE
42 Curling, DG	81 Anderson, DE-OE
43 Hart, LB	82 Spanish, OE
44 Jansen, LB	83 Potter, OE
45 McClellan, LB	84 Sauer, OE
46 Wood, LB	85 Swart, DE
50 Harris, LB-C	86 Smith, DE
51 Cartwright, C	87 Van Meter, DE
52 Ingram, C-G	88 Van Note, DE
54 Withrow, C	89 Zeles, DE-OE
55 Roberts, LB	90 Arnold, KS
60 Beirne, OG	

— Officials —

Referee	Johnny Cook	Field Judge	Ray Sonnenberg
Umpire	Joe Drabelle	Back Judge	Gordon Pettus
Head Linesman	David Scobey	Electric Clock Operator	Boyce Smith

"COCA-COLA" AND "COKE" ARE REGISTERED TRADE-MARKS WHICH IDENTIFY ONLY THE PRODUCT OF THE COCA-COLA COMPANY. PRINTED IN U.S.A.

E YOU NEVER GET TIRED OF





IN '67 BUICK

Get in with the In Crowd in a GS-400



BUICK MOTOR DIVISION

KENTUCKY SPECIALISTS

PLACEMENTS: Granato (21), Arnold (90), Spanish (82)
 PUNTING: Seiple (32), Lyons (24), Beadles (14)

INFORMATION

SERIES: UK Won 0, Houston Won 1
 LAST UK WIN: None
 NEXT MEETING: Not Announced

FACTS ABOUT KENTUCKY

President Dr. John W. Oswald
 Athletic Director Bernie Shively
 Head Coach Charlie Bradshaw
 Publicists Ken Kuhn and Bill Baxter
 Colors Blue and White
 Offense Wing T and "I"

KENTUCKY

Wildcats

(SENIORS, Juniors, Sophomores)

QUICK E
 82 SPANISH
 81 Anderson

QUICK T
 76 Little
 71 Friebert

QUICK G
 64 MACHEL
 67 Wolf

CENTER
 51 Cartwright
 54 WITTHROW

STRONG G
 61 Cassidy
 66 Nails

STRONG T
 78 MULLINS
 77 Rush

STRONG E
 86 SMITH
 83 Potter

OFFENSE

QUARTERBACK
 14 Beadles
 17 Prather

TAILBACK
 38 WINDSOR
 23 Goins

FULLBACK
 24 Lyons
 41 Britton

WINGBACK
 32 SEIPLE
 30 Chacos

OFFENSE

LEFT END
 87 Van Meter
 85 SWART

LEFT TACKLE
 65 Gresham
 63 King

LINEBACKER
 55 Roberts
 62 Childre

MIDDLE GUARD
 42 Curling
 60 Beirne

LINEBACKER
 43 Hart
 40 McGRAW

RIGHT TACKLE
 79 Katzenbach
 74 Drinnen

RIGHT END
 88 Van Note
 69 Palmer

DEFENSE

ROVER
 44 Jansen
 15 Ferguson

LEFT HALF
 34 Phaneuf
 18 Cloyd

SAFETY
 25 DAVIS
 21 Granato

RIGHT HALF
 22 Fee
 33 Gray

DEFENSE

HOUSTON SPECIALISTS

PLACEMENT: Brezina (53), Hebert (23), Dyar (86)
 PUNTERS: Hebert (23), Matthews (31)

SERIES INFORMATION

BIGGEST WIN: By Kentucky, None
 By Houston, 38-21 (H) in 1965
 AT LEXINGTON: First Meeting Here

HOUSTON

Cougars

(SENIORS, Juniors, Sophomores)

SE
 23 Hebert
 22 Bean

LT
 70 Cloud
 64 Perez

LG
 67 Stotter
 73 Schneider

C
 55 SIDES
 62 Pryor

RG
 72 Pickens
 68 Smith

RT
 78 FOWLER
 76 Odom

TE
 82 BEER
 83 Daulong

OFFENSE

QB
 16 BURRIS
 11 Woodall

HB
 42 McVea
 35 Nordgren

FLK
 22 Bean
 31 Matthews

FB
 26 POST
 32 Williams

OFFENSE

LE
 89 Caraway
 45 Woodring

LT
 86 DYAR
 74 Thompson

RT
 71 OTIS
 60 Larson

RE
 81 CUNNINGHAM
 45 Woodring

LLB
 53 Brezina
 14 Barbour

MLB
 51 Spruill
 65 Gardner

RLB
 27 Phillips
 90 Satcher

DEFENSE

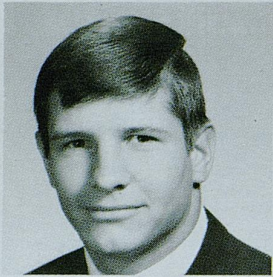
LH
 37 Peacock
 33 Hollon

LS
 44 Paciorek
 43 Shires

RS
 17 Hollomon
 20 Berger

RH
 24 SPRATT
 25 Simpson

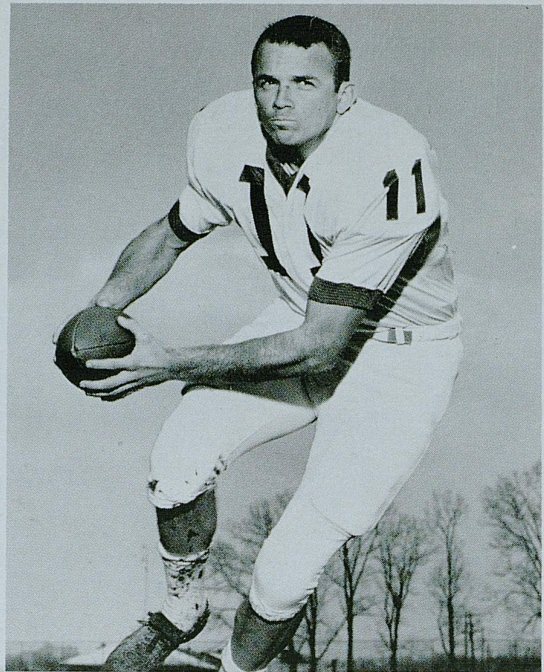
DEFENSE



STEVE GRAY



PHIL GREER



ROGER WALZ



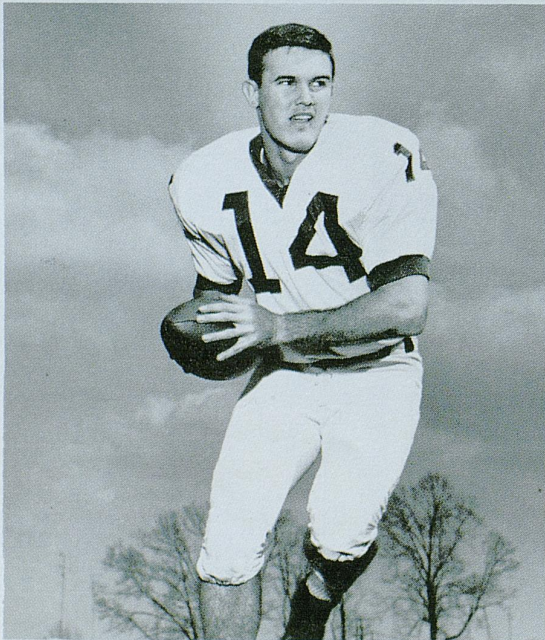
BILL JANSEN



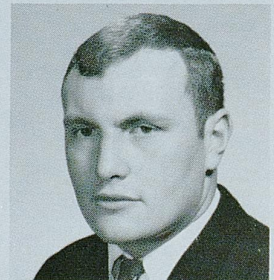
RODGER HART

KENTUCKY

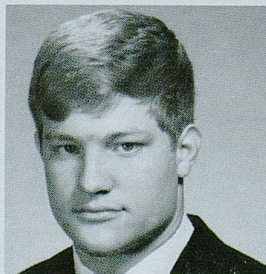
TERRY BEADLES



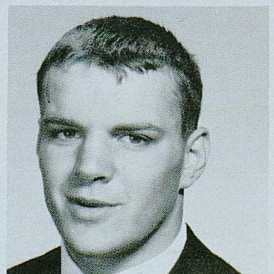
JIM GRESHAM



MARTY JOYCE



JOHN HARRIS



MIKE GRANATO

WLEX-TV

"Best in SPORTS"

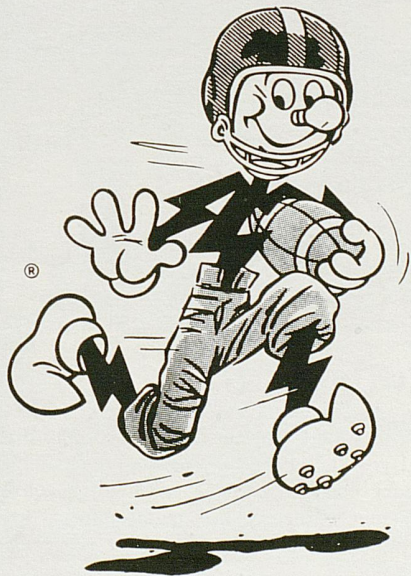


CY FOLLMER
WLEX-TV
SPORTS DIRECTOR

Presents

- SPORTS EXTRA 6:00 P.M.
- SPORTS FINAL 11:20 P.M.
- ● BOTH in FULL COLOR

- **NFL FOOTBALL 66-67**
- 32 GAMES
- ● ● ● ● Including ● ● ● ●
- NFL Championship Game Jan. 1
- NFL Runner-up Bowl Jan. 8
- NFL PRO - Bowl Jan. 15
- And Many Top NCAA Bowl Games



LET'S GO!

GO!

GO!

GO!

ALL ELECTRIC

KU
SYMBOL
of
SERVICE

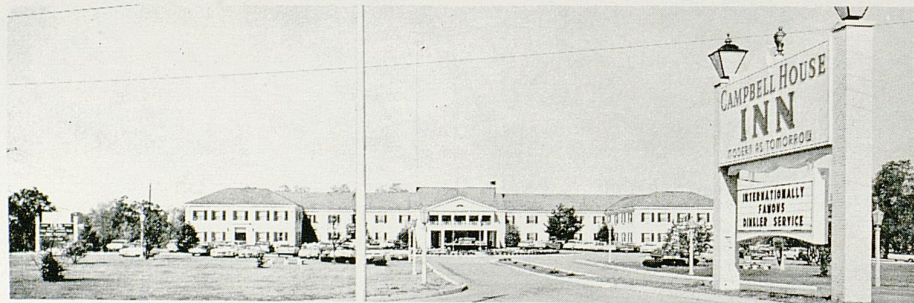
You meet the happiest people in an All-Electric home!

KENTUCKY UTILITIES COMPANY

DeBoor

Laundry Dry Cleaning
Rug Cleaning Storage

★ ★ ★ ★ ★ ★ ★ ★ ★ ★ ★ ★ ★ ★ ★ ★
KEEP FREEDOM
IN YOUR FUTURE
WITH
U. S. SAVINGS BONDS
★ ★ ★ ★ ★ ★ ★ ★ ★ ★ ★ ★ ★ ★ ★ ★



Dinkler Campbell House Inn

Nothing matches the Dinkler Campbell House Inn for fun or food. The superb cuisine of the Cotillion Room (winner of the coveted Holiday Magazine excellence award for several years) will make your stay a memorable experience. Here you will find a happy blending of traditional Kentucky hospitality and every modern convenience; luxurious suites and rooms, beautiful Dining Room, Cocktail Lounge with sparkling entertainment, Exercise and Massage Room, Gift Shop, Dress Shop, Barber Shop and Beauty Salon. Adjacent to Par Three Golf Course and Driving Range. May we have the pleasure of serving you soon?

Harrodsburg Road • Lexington, Kentucky
Phone 254-8490

Paul Cordet • General Manager

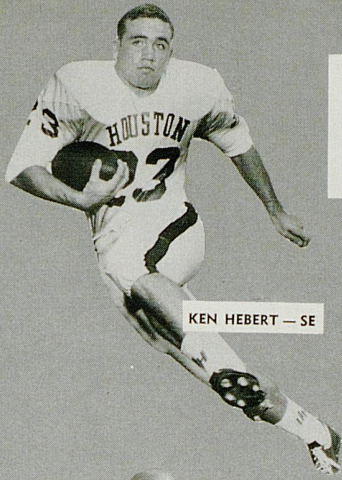


DINKLER HOTEL CORPORATION • Carling Dinkler, Jr., President

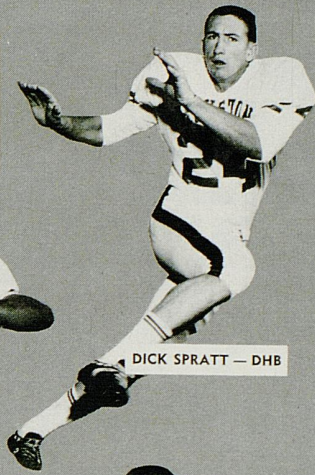
A wholly - owned subsidiary of Transcontinental Investing Corporation



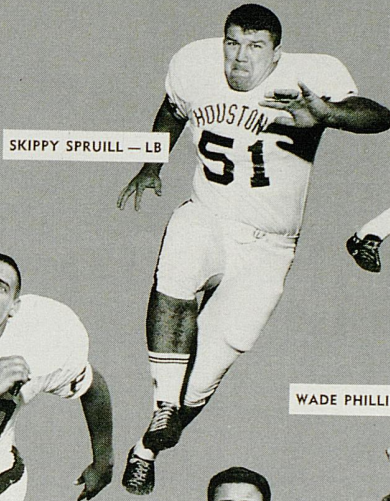
COUGARS



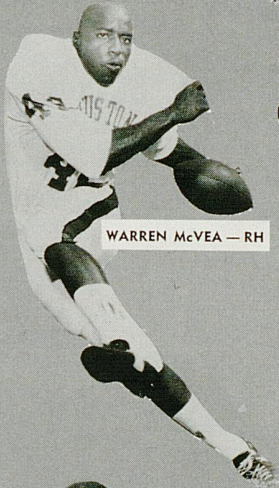
KEN HEBERT — SE



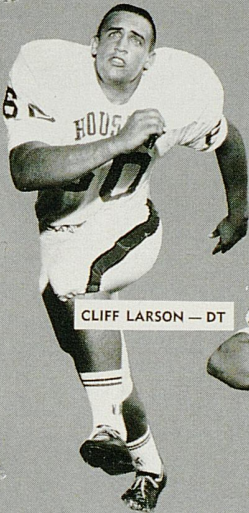
DICK SPRATT — DHB



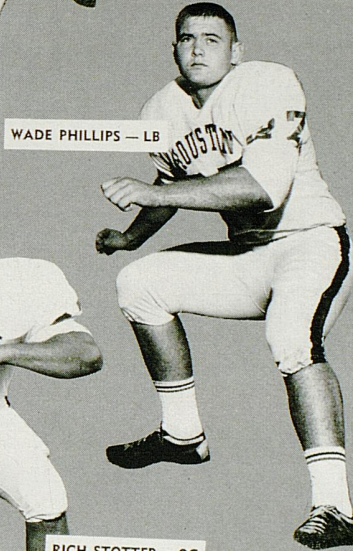
SKIPPY SPRUILL — LB



WARREN McVEA — RH



CLIFF LARSON — DT



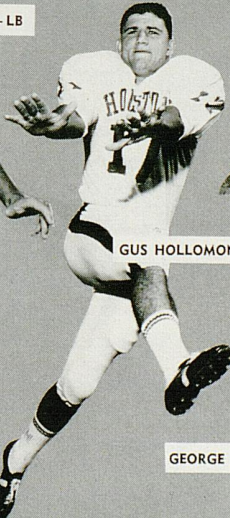
WADE PHILLIPS — LB



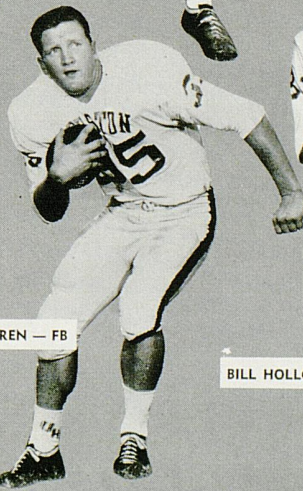
RICH STOTTER — OG



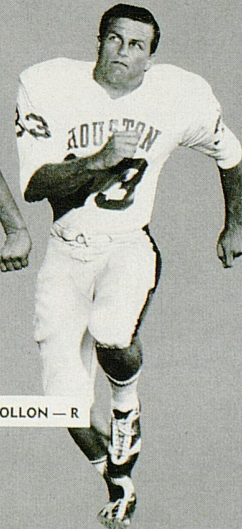
GREG BREZINA — LB



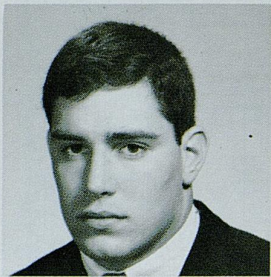
GUS HOLLOMON — S



GEORGE NORDGREN — FB



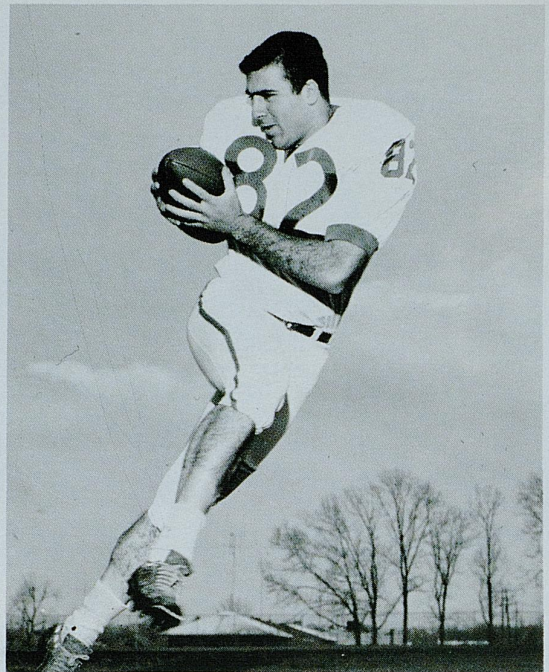
BILL HOLLON — R



DICK PALMER



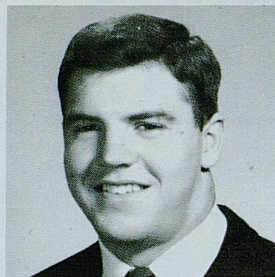
SCOTT VALENTINE



DAN SPANISH



LEONARD RUSH



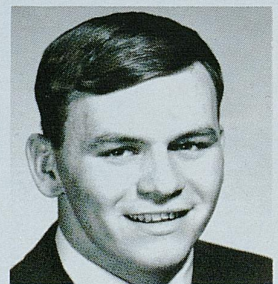
DEREK POTTER

KENTUCKY

DON BRITTON



TOMMY SAUER



WESLEY NAILS



JIM PRATHER



JOE DAVID SMITH

New and "USED" Book Center on Campus
in the
STUDENT CENTER
UNIVERSITY BOOK STORE

UK GLASSWARE

UK SWEATSHIRTS

UK PENNANTS

UK JEWELRY

UK SOUVENIRS

UK DECALS

OPEN AFTER DAY GAMES UNTIL 6 P.M.

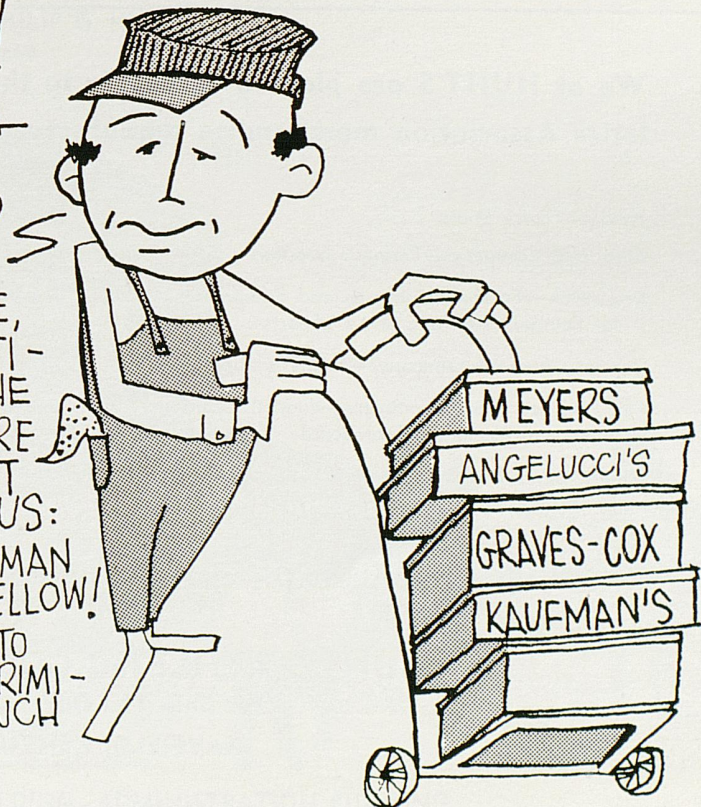
CONGRATULATIONS SIR!

DID YOU KNOW THAT YOU &
THE MEN YOU SEE AROUND YOU
ARE AMONG THE BEST DRESSED
MEN IN THIS WHOLE U.S.A.?

IT'S A FACT! HERETOFORE,
THOSE FAST HORSES & BEAUTI-
FUL WOMEN HAVE STOLEN THE
SHOW, BUT MAYBE THEY ARE
THE STRIKING PROOF OF WHAT
OUR MANUFACTURERS TELL US:

THE BLUE GRASS GENTLEMAN
IS A MOST DISCRIMINATING FELLOW!

AND WE FEEL HONORED TO
HAVE DRESSED SO MANY DISCRIMI-
NATING GENTLEMEN FOR SUCH
A LONG WHILE.



Support U. of K. Football



BUSINESSMEN'S LIFE INSURANCE COMPANY

144 SOUTHLAND DRIVE LEXINGTON, KENTUCKY 40503 PHONE 278-2351

Be A Wildcat Booster

We at HUNT'S are pleased to supply to the University of Kentucky Athletics Association merchandise manufactured by the following firms:

Adidas—Track Shoes

Bike Web Company—Trainer's Supplies

Brunswick—Football Uniforms and Equipment
for Football, Baseball, and all Sports

Cramer Chemical Company—Trainer's Supplies

Fair Play Scoreboard Company—Football Score-
board and Basketball Scoreboard

Hillerich and Bradsby Company—Louisville Slugger
Bats

Johnson and Johnson—Trainer's Tape

King O'Shea Company—Basketball Uniforms

Powers Mfg. Company—Award Jackets

John T. Riddell, Inc.—Football Helmets and Shoes

A. G. Spalding & Bros.—Football and Basketballs

Spanjian of Pasadena—Football and Baseball
Uniforms

Sports Equipment Co.—SECO Athletic Supplies

We are grateful to the above manufacturers who sponsor this ad.

HUNT'S ATHLETIC GOODS CO., INC.

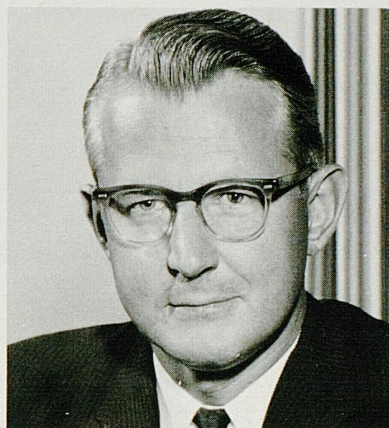
"We Ship The Day You Buy"

MAYFIELD, KENTUCKY

University of Houston



BILL YEOMAN
Head Coach



DR. PHILIP G. HUFFMAN
President



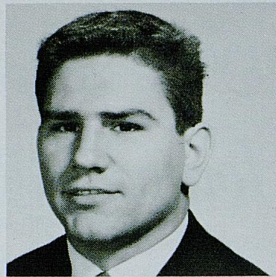
HARRY FOUKE
Director of Athletics



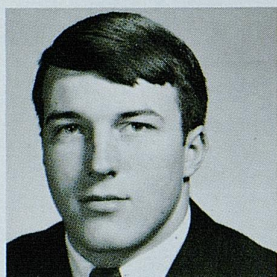
EZEKIEL W. CULLEN BUILDING - ADMINISTRATION BUILDING



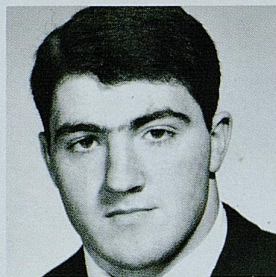
EDDIE INGRAM



ED ZAREMBA



KEN WOOD



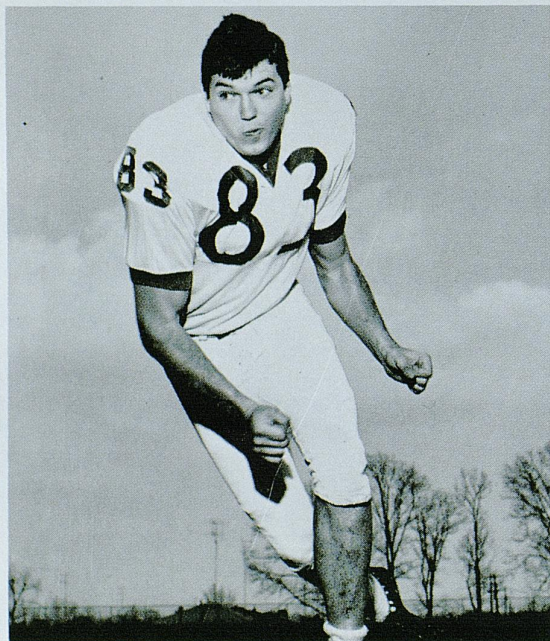
JEFF VAN NOTE



DICKY LYONS

KENTUCKY

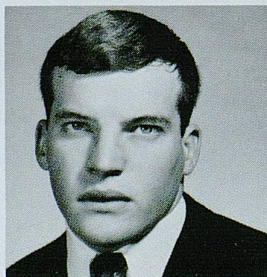
JIM SWART



LOUIS WOLF



JOHN ZELES



DOUG VAN METER



Springs Motel

2020 South Broadway PHONE 277-5751 Lexington, Kentucky

DANCE TO THE MUSIC OF "THE NEPTUNES"

Tuesday through Saturday — 8:00 - 1:00

Dine in the Elegant Setting of "THE POMPEI ROOM"

Cocktail hour — 4:00 - 6:00

LEXINGTON

Insurance Agency, Inc.

"Complete Insurance Service"

Kentucky Central Building

Phone

254-6257



Open
Mondays
and
Fridays
'Til 9

Stewart's

Phone or Write
Sally Stewart
Personal Shopper
252-2210

College Football—An American Institution

This year, 1966, and the eight-day span of November 12-19, has been officially designated COLLEGE FOOTBALL WEEK by the National Collegiate Athletic Association and the American Football Coaches Association. Many great Americans have referred, some with considerable eloquence, to the place of football in our free society.

When President Lyndon B. Johnson received, in January of this year, the Tuss McLaughry Outstanding American Citizen Award from the American Football Coaches Association, he unmistakably spoke his personal conviction that the game of football and the men who coach it make significant contribution to the strength of this nation and its people. Among the things he said were these:

“Football is really and truly an American institution. It embodies our highest ideals of character and courage . . . Presidents and Cabinet Officers and Justices and leaders in every walk of life have first learned the lessons of discipline, of dedication, out on the athletic fields of the United States.

“There is not a day passes that I do not see the results of the training that you have given our young people; first, on the battlefield; second, in our services throughout our installations in the Continental United States; third, in the far-flung corridors of various offices that I attempt to direct and whose personnel I attempt to lead.

“If all the nations in the world would conduct their affairs with the same dedication and with the same fair play and with the same friendly competition that the game of football stands for, peace would have been secured a long time ago.”

We couldn't agree with President Johnson more. In behalf of those we represent, we are proud to be a part of such a significant activity—a great sport inherent to this nation's system of higher education.

EVERETT D. BARNES
Colgate University
President
National Collegiate
Athletic Association

DANIEL E. JESSEE
Trinity College
President
American Football
Coaches Association

BECKER

Laundry—Dry Cleaning, Inc.

5 Convenient Locations

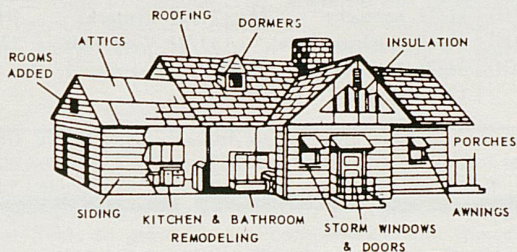
Main Plant — S. Limestone and Euclid Avenue
 4th Street and N. Broadway Walton and Aurora Avenue S. Limestone and Vine Southland Shopping Center

NOBODY can Launder a Shirt like BECKER

Claude McGaughey, Jr., President — U.K. Grad — Class '48

**For All Types of Remodeling
 Commercial or Residential**

"Your Best Bet is Cornett"



Dial 252-5036

Recreation Rooms — Garages

Custom Kitchens — Room Additions



Cornett Construction Co.

1077 S. Broadway

Lexington, Ky.

Borden's

ICE CREAM

Throughout
 Central Kentucky



576 E. Third St. — Phone 254-2855



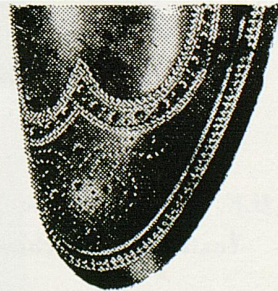
*FRENCH
 SHRINER*

*Outstanding.
 COMFORT,
 QUALITY
 & STYLE*

SHOES FOR MEN

BAYNHAM'S

135 East Main Street



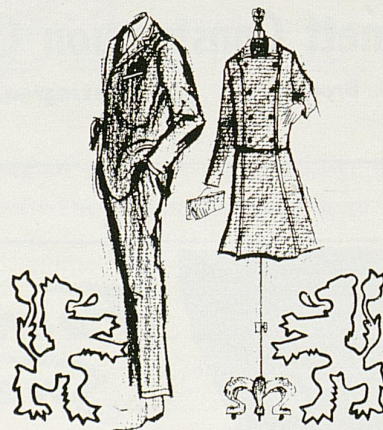
WHAT KENTUCKY OPPONENTS ARE DOING

NO. CAROLINA (2-5)	MISSISSIPPI (5-2)	AUBURN (4-4)	VIRGINIA TECH (6-1-1)	LOUISIANA ST. (3-4-1)
0 Kentucky (A) 10	13 Memphis St. (A) 0	20 Chattanooga (H) 6	0 Tulane (A) 13	28 So. Carolina (H) 12
10 N.C. State (H) 7	17 Kentucky (N) 0	0 Tennessee (N) 28	49 Geo. Wash. (H) 0	15 Rice (A) 17
21 Michigan (A) 7	7 Alabama (N) 17	7 Kentucky (A) 17	13 West Virginia (H) 13	10 Miami (H) 8
10/8 (Open Date)	3 Georgia (A) 9	14 Wake Forest (H) 6	7 Kentucky (A) 0	7 Texas A&M (H) 7
0 Notre Dame (A) 32	14 Southern Miss. (H) 7	3 Georgia Tech (N) 17	21 Vanderbilt (N) 6	30 Kentucky (A) 0
0 Wake Forest (H) 3	27 Houston (N) 6	7 TCU (H) 6	24 Virginia (A) 7	7 Florida (H) 28
3 Georgia (A) 28	17 L.S.U. (A) 0	27 Florida (A) 30	23 Florida St. (A) 30	0 Mississippi (H) 17
3 Clemson (A) 27	11/5 (Open Date)	13 Miss. State (N) 0	11 Wake Forest (A) 0	0 Alabama (N) 21
11/12 Air Force (H)	11/12 Tennessee (A)	11/12 Georgia (A)	11/12 Wm. & Mary (A)	11/12 Miss. St. (H)
11/19 (Open Date)	11/19 Vanderbilt (N)	11/19 (Open Date)	11/19 (Open Date)	11/19 Tulane (A)
11/26 Virginia (H)	11/26 Miss. St. (H)	11/26 (Open Date)	11/24 V.M.I. (A)	
		12/3 Alabama (N)		
GEORGIA (7-1)	WEST VIRGINIA (2-4-2)	VANDERBILT (1-6)	HOUSTON (6-1)	TENNESSEE (5-2)
20 Miss. State (N) 17	15 Duke (A) 34	24 The Citadel (H) 0	21 Florida State (A) 13	28 Auburn (N) 0
43 V.M.I. (A) 7	24 Wm. & Mary (H) 13	0 Georgia Tech (A) 42	21 Wash. State (H) 7	23 Rice (H) 3
7 So. Carolina (A) 0	13 Virginia Tech (A) 13	0 Florida (H) 13	34 Oklahoma St. (H) 9	3 Georgia Tech (A) 6
9 Mississippi (H) 3	14 Pittsburgh (A) 17	10/8 (Open Date)	10/8 (Open Date)	10 Alabama (H) 11
6 Miami (A) 7	9 Maryland (A) 28	6 Va. Tech (N) 21	28 Miss. State (H) 0	29 S. Carolina (H) 17
27 Kentucky (H) 15	6 Penn. State (H) 38	6 Alabama (N) 42	6 Mississippi (N) 27	38 Army (N) 7
28 N. Carolina (H) 3	14 Kentucky (H) 14	12 Tulane (H) 13	48 Tampa (H) 9	28 Chattanooga (H) 10
27 Florida (N) 10	35 The Citadel (H) 0	10 Kentucky (A) 14	73 Tulsa (H) 14	11/12 Ole Miss (H)
11/12 Auburn (A)	11/12 Geo. Wash. (A)	11/12 Navy (H)	11/12 Kentucky (A)	11/19 Kentucky (H)
11/19 (Open Date)	11/19 Syracuse (H)	11/19 Ole Miss (N)	11/19 (Open Date)	11/26 Vanderbilt (A)
11/26 Georgia Tech (H)		11/26 Tennessee (H)	11/26 Memphis St. (H)	
			12/3 Utah (H)	

Kennedy Book Store

U.K. Shirts — Pennants — Decals
Textbooks — School Supplies

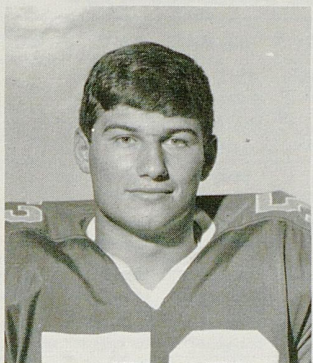
"Your Store for Traditional Wear"
Our Customers Set the Fashion Pace
Visit Us Soon and Often
Located Next to Kennedy's Book Store



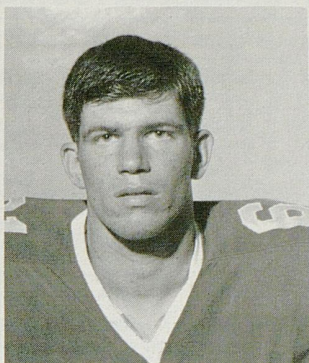
The University Shop

OHIO U. PURDUE U. OHIO STATE U. BOWLING GREEN S.U.  EASTERN KY. U. FLORIDA U. MIAMI U. (O.) U. of KENTUCKY

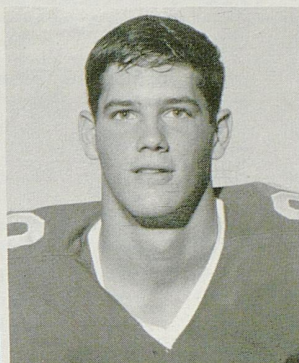
MEET THE "KITTENS" . . .



SHADID



SULLIVAN



THOMPSON

CARY SHADID—Started grid career at St. Leo's in Tampa, Fla., and as a sophomore helped Holy Cross of New Orleans to a 13-0-1 record, Louisiana AAA championship and fourth place national rank . . . Wound up schooling at Choctawhatchee High in Shalimar, Fla., where he was voted team's most valuable defensive player . . . All-Conference, All-County, team captain . . . Won football letters at each of three schools attended . . . Family nationality Lebanese.

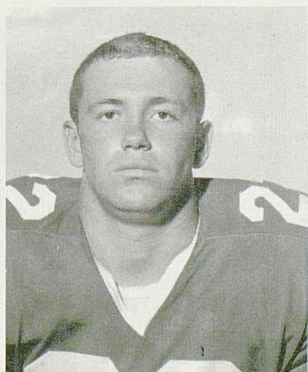
DAVID SULLIVAN—Son of well-known radio sportscaster, Claude Sullivan, David played four years of high school football at Lexington's Lafayette as a guard and linebacker . . . As a collegian, he is operating chiefly at guard and has good size at 5-11, to grow on . . . Lafayette Generals posted a 11-1 record and took regional championship in David's sophomore year . . . Plans to enter Law School after graduation.

PHIL THOMPSON—An All-America high school end, Phil led Louisville Seneca High to Kentucky's Class AAA championship and 10-1 record last season . . . Set school records for pass-catching—including most caught, most TD passes and most points by a lineman . . . Coached by ex-UK Wildcat Ron Cain, Phil was the first football All-America at his school . . . Also All-Southern and All-State selection . . .

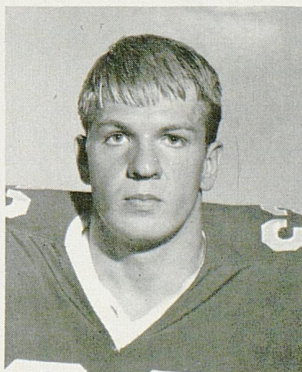
Father, Roger, played football at Centre College and a brother, Gordon, tried his hand at football at UK in '62.

TOM WINDSOR—Brother of the Wildcats' starting wingback, Bob Windsor, this youngster is not following exactly in his older brother's footsteps . . . Tom comes as a fullback and tailback candidate directly out of high school (Montgomery Blair of Silver Spring, Md.) while Bob transferred after two years at Montgomery Junior College . . . Tom performed well as a ball carrier this season and harbors ambition to take up where Bob leaves off and eventually follow him into pro ball . . . Won All-Metro honors . . . Set record with 284 yards in one game . . . Played four positions in high school.

MARTY YERDON—Boasts the unusual distinction of achieving All-America recognition at two different schools . . . Marty first won the honor at Catholic Central in hometown Troy, N. Y., in soph year of 1963 . . . Later, he repeated the performance at Bordentown Military Institute in N. J. . . . Helped the "Little Army," as team was known, to post undefeated (8-0) record last season with his outstanding play as a guard, tackle and linebacker . . . Bordentown operated with the Single Wing system . . . Marty's favorite subject is art and he has ambitions to pursue work in some form of art after graduation.



WINDSOR



YERDON

1966—SOUTHEASTERN CONFERENCE FOOTBALL SCHEDULE—1966

WEEK-END	SEPT. 17	SEPT. 24	OCT. 1	OCT. 8	OCT. 15	OCT. 22	OCT. 29	NOV. 5	NOV. 12	NOV. 19	NOV. 26
ALABAMA		La. Tech Birmingham*	Ole Miss Jackson*	Clemson Tuscaloosa	Tennessee Knoxville	Vanderbilt Birmingham	Miss. State Tuscaloosa	L.S.U. Birmingham-T	So. Carolina Tuscaloosa		Sou. Miss. Mobile
AUBURN	Chattanooga Auburn	Tennessee Birmingham	Kentucky Lexington*	Wake Forest Auburn	Ga. Tech Birmingham	T.C.U. Auburn	Florida Gainesville	Miss. State Jackson	Georgia Auburn		Auburn-T Dec. 3 - B'ham Alabama-T
FLORIDA	Northwestern Gainesville	Miss. State Gainesville	Vanderbilt Nashville	Fla. State Tallahassee	N. C. State Raleigh	L.S.U. Baton Rouge*	Auburn Gainesville	Georgia Jacksonville	Tulane Gainesville		Miami Gainesville
GEORGIA	Miss. State Jackson*	V.M.I. Roanoke*	So. Carolina Columbia*	Ole Miss Athens	Miami Miami#	Kentucky Athens	No. Carolina Athens	Florida Jacksonville	Auburn Auburn		Ga. Tech Athens
KENTUCKY	No. Carolina Lexington*	Ole Miss Jackson*	Auburn Lexington*	Va. Tech Lexington*	L.S.U. Lexington*	Georgia Athens	W. Virginia Morgantown	Vanderbilt Lexington	Houston Lexington	Tennessee Knoxville-T	
L.S.U.	So. Carolina Baton Rouge*	Rice Houston*	Miami Baton Rouge*	Texas A&M Baton Rouge*	Kentucky Lexington*	Florida Baton Rouge*	Ole Miss Baton Rouge*	Alabama Birmingham-T	Miss. State Baton Rouge-T	Tulane New Orleans*	
MISSISSIPPI	Memphis St. Memphis*	Kentucky Jackson*	Alabama Jackson*	Georgia Athens	Sou. Miss. Oxford	Houston Memphis	L.S.U. Baton Rouge*		Tennessee Knoxville	Vanderbilt Jackson	Miss. State Oxford
MISS. STATE	Georgia Jackson*	Florida Gainesville	Richmond Starkville	Sou. Miss. Starkville	Houston Houston*	Fla. State Tallahassee*	Alabama Tuscaloosa	Auburn Jackson	L.S.U. Baton Rouge - T		Ole Miss Oxford
TENNESSEE		Auburn Birmingham	Rice Knoxville	Ga. Tech Atlanta-T	Alabama Knoxville	S. Carolina Knoxville	Army Memphis	Chattanooga Knoxville	Ole Miss Knoxville	Kentucky Knoxville-T	Vanderbilt Nashville
VANDERBILT	The Citadel Nashville*	Ga. Tech Atlanta	Florida Nashville*		Va. Tech Richmond	Alabama Birmingham	Tulane Nashville	Kentucky Lexington	Navy Nashville	Ole Miss Jackson	Tennessee Nashville

*—Night #—Friday Night

T—Television

Dixie Bell Dairy Company

**"The Largest and Only Locally
Owned Dairy Serving
Central Kentucky"**



**315 North Limestone Street
LEXINGTON, KY.**

Places of Interest To Visit In Lexington:

Henry Clay Home Big Red Mile
Hunt Morgan House Horse Farms
Keeneland Race Course

And

WENNEKERS

153-155 East Main Street

*Where Sports Celebrities Make Their
Headquarters*

Save Money on Nationally Advertised Shoes

Prices You Can Afford

R

"No Order Too Small"

R

Sageser Drugs

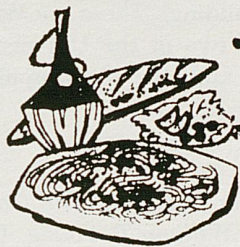
R

"Ask Your Doctor"

R

CARRY OUT ORDER SERVICE

Phone 277-5211 — We'll have your order in a jiffy — Piping hot.



Italian

Spaghetti

Pizza

Steaks

Ruben Sandwiches

"DOODLES"

1915 South Lime

Phone 277-5211

Restaurant-Cocktail Lounge



MILLER WELCH



CHARLES LEAR

CARPENTER-WARREN

INSURANCE AGENCY
Since 1927

137 N. Upper St. PHONE 252-4155 Lexington, Ky.



DONALD ROSE

ALL FORMS
OF INSURANCE



LEXINGTON PHOTO ENGRAVING CO.

223 W. Short
Tel. 255-5015

If your **GOAL** is
"Fast Production — Fine Reproduction"
for your printing needs,
RUSH to left **GOAL** for letterpress plates,
or
RUSH to right **GOAL** for offset plates.
Let us **TACKLE** your plate-making to **END**
your problems. **PASS** them to our **CENTER**
and you will **GUARD** against a **KICK** in the
final **RUN**.

LEXINGTON PHOTO LITH INC.

223 W. Short
Tel. 255-5015

THE CHANGING FACE OF U.K.

Returning alumni, looking around the campus today on the occasion of an annual Homecoming visit, may well surmise that "the Old University ain't what she used to be."

That supposition about the growing Alma Mater is no better signified than in the building program that has seen some added facilities completed since last Homecoming Day and others well underway to accommodate more students and new programs.

Two major buildings and portions of a third are in use for the first time during the current school year. Already completed are a seven-story addition to the College of Engineering quadrangle and a new auditorium at the Agricultural Science Center. Scheduled for early completion are five low-rise dormitories, part of an 11-unit complex that eventually will house over 2,700 students.

The engineering tower, which cost \$2,200,000, provides new quarters for the departments of chemical engineering, electrical engineering and engineering mechanics, plus a structural research laboratory, a library, and the college's administrative offices.

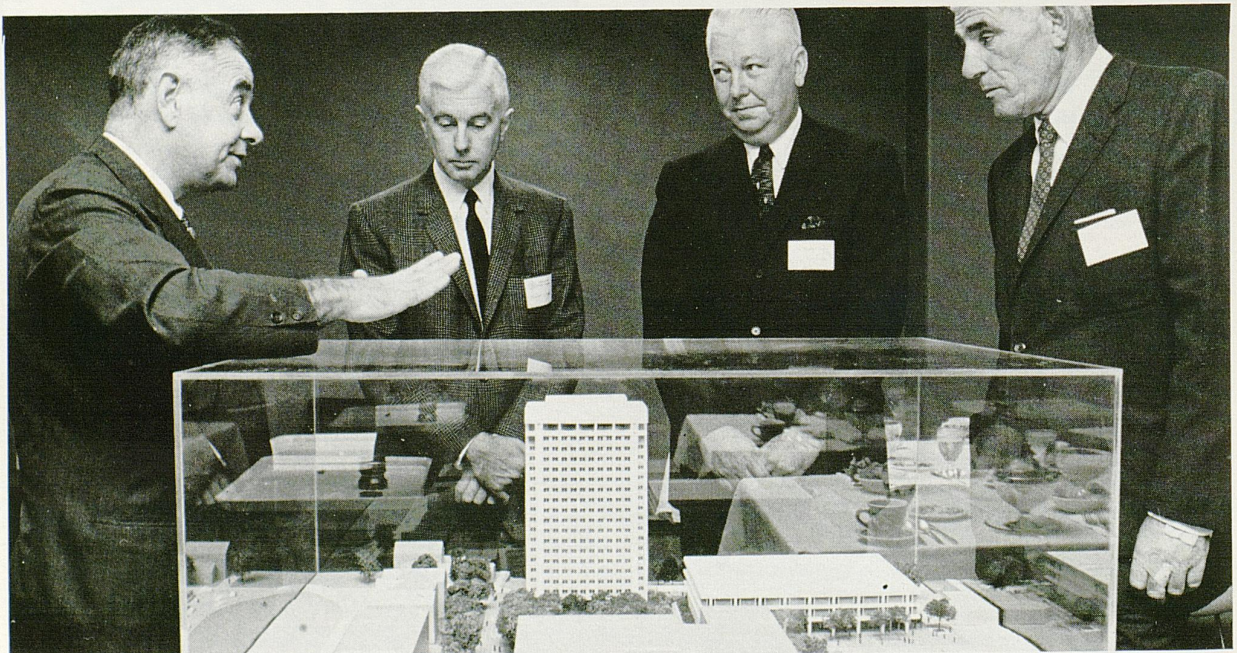
MORE CAMPUS GROWTH—President John W. Oswald (left) uses a scale model to show three members of the new University Development Council how the Lexington campus will be altered by construction of a 19-story office tower and ad-

Half a mile south of the central campus, on Nicholasville Pike, is the new Agricultural Science Center auditorium. Built at a cost of \$412,000, it seats 500 persons.

A few hundred yards northeast of the new auditorium is the \$22 million student housing complex. Five of its 11 buildings are already occupied. They will accommodate about 880 students. When completed in late 1967, the complex will have three other low-rise dormitories, two towers of 22 stories each, and a central facility housing a cafeteria, recreation rooms and lounges.

Another major project scheduled to get under way soon is the construction of a \$10 million classroom-office complex. To make way for the 19-story office tower and three-story classroom building, wreckers will demolish three old structures on the central campus, just east of the recently remodeled Administration Building. These are White Hall and Patterson House, two of the University's three original buildings, and the Anthropology Museum.

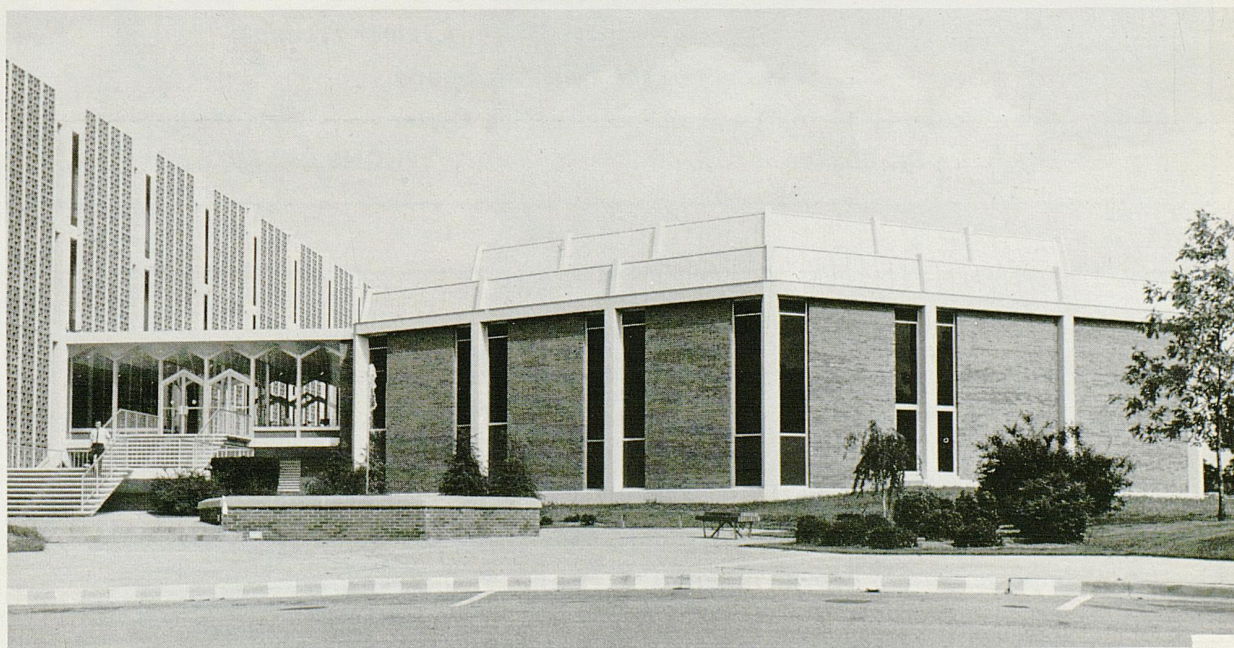
joining three-story classroom building. The Council members (from left) are William T. Young, Lexington; Chairman C. Robert Yeager, Attleboro, Mass., and Louis L. Haggin II, Versailles.



NEW ENGINEERING TOWER



AGRICULTURAL SCIENCE AUDITORIUM

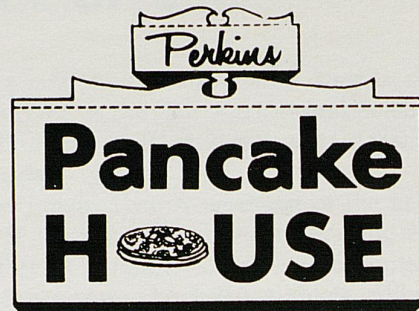


BALL HOMES INC.

*Homes of Distinction
At a Moderate Price*

254-7777

1316 Versailles Road, Lexington



- 28 Different Varieties of Pancakes & Waffles
- Businessman's Luncheon Mon. thru Friday
- Steaks, Chops, Chicken, Seafood Also Available
- Dine In An Early American Atmosphere
- Special Family Nights & Childrens Portions
- Informal, Friendly Service
- Private Dining Room For Parties Clubs, Banquets, Etc.

BILL ELLIS — Manager

DIAL — 254-7835

Located On U.S. 27 At S. Lime and Rose Sts.
Across From U. of Ky. Medical Center

*"Stop in Whenever Your Appetite
Craves a Treat"*

SOUTHLAND SPORT SHOP

Distributors of

Riddell, Rawlings, Wilson, and Spalding Sporting Goods

Adidas Track Shoes Speedo Cramer Products

Plenty of Free Parking Space

Gene Stokley — In The Southland Shopping Center — Dick Wallace

P.O. BOX 8251

PHONE 277-3977

Second National Bank & Trust Co.

123 Cheapside, Lexington, Ky.

BRANCH BANK LOCATIONS:

2225 Nicholasville Road, 286 New Circle Road N.W., 1718 Alexandria Drive

REMEMBER: *Safety Is Our Inherent Way,
Saving Is Your Touchdown Play.*

UNIVERSITY OF KENTUCKY

“WILDCAT”

FRED M. DART *Director*

JOHN CARR .. *Assistant Director*

BRIAN GORRELL *Drum Major*

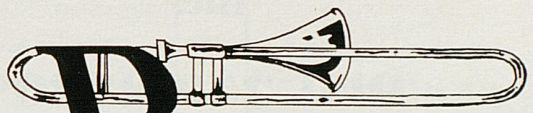
JOHN EDMONSON *Arranger*

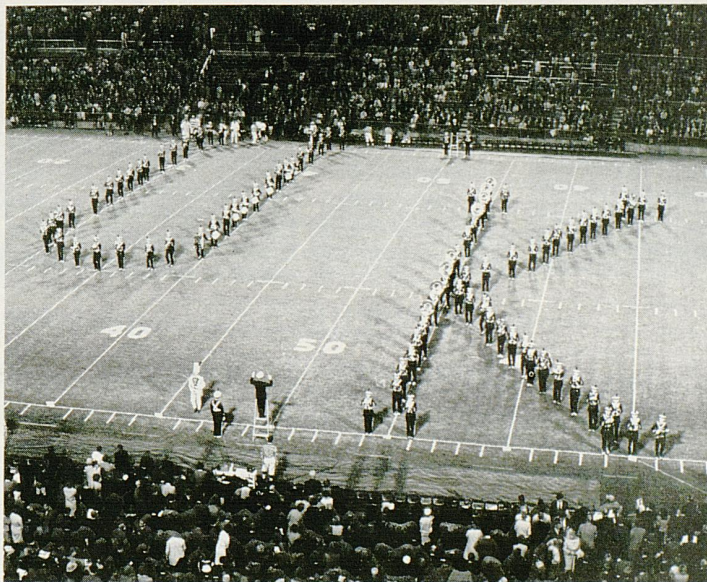
JOHN TATGENHORST *Arranger*

JERRY GRADY *Arranger*

GLENN TAYLOR *Artist*


MARCHING


BAND



“HOMECOMING”

The 1966 “Wildcat” Marching Band

HOWARD Johnson's
Motor Lodge



TWO LOCATIONS

Nicholasville Road, U.S. 27, South
Phone 277-1191, Lexington, Kentucky

and

North Broadway, U.S. 27, North
Phone 299-1202, Lexington, Kentucky

LANDMARK FOR SLEEPY AMERICANS

Lexington Yellow Cab Co.

Inc.

**ALL
RADIO CABS**

Dial 252-2230

**ALL
RADIO CABS**

ROY ALEXANDER
Rifle



BUSTER BROWN
FB Equip. Mgr.



C. W. BRUNER
Fields Supt.



HARVEY HODGES
Ticket Mgr.



BOB JOHNSON
Track



KEN KUHN
Information Dir.



WILDCAT HEAD COACHES AND ATHLETICS STAFF



AL MORGAN
Supervisor
Student Admissions



WYNN PAUL
Swimming
Water Polo



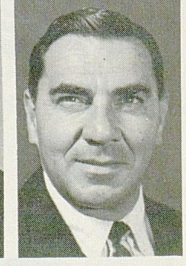
ADOLPH RUPP
Basketball



JOE SHANNON
Baseball



DICK VIMONT
Tennis



HUMSEY YESSIN
Golf

Flying Somewhere?

Contact . . .

All-American Tours Inc.

(Lexington's largest travel agency—established 1932)

Phoenix Hotel — Telephone 255-6780

. . . Where you get information on ALL airlines by one call or visit. There is no service charge.

— ALSO —

We have an attractive program of tours and cruises to all parts of the world.



145 N. UPPER ST.
1220 HARRODSBURG RD.

You're Always Welcome At . . .

Begley's

WALGREEN AGENCY DRUG STORES

IN LEXINGTON

- ★ 69 Eastland Shopping Center
- ★ Northland Shopping Center
- ★ 878 East High Street
- ★ 404 Southland Drive
- ★ 1743 Alexandria Drive

SERVING THE BEST

IN

DRUG STORE NEEDS

SINCE 1921

16 DRUG STORES IN KENTUCKY

"Last Year

Was a Very Good Year"
But This Year Will Be
Better!

GO CATS 1966

And Shop

WALLACE'S

A few steps more mean
more for your books and
more for your money

S. Lime at Euclid Ph. 252-8753

A Famed Alumnus Reviews 40 Years

When I think of Kentucky schools in relation to my own experiences going back into the early twenties as a high school student in an isolated area of Harlan County, I remember an area without roads and a means of communication except by railroad.

To travel 30 miles meant a three-hour train trip. By today's standards, you can understand we were not only isolated from the University but from the mainstream of American life. When a student came to the University of Kentucky, from the outlying regions of the Commonwealth, this was considered



(Don Whitehead, an alumnus of the University of Kentucky, is twice the winner of Pulitzer Prizes. He also is an active member of the Alumni Association and earlier this year returned to the campus to act as co-host to a group of leading American editors and education writers. During that time he was interviewed by Quentin Allen, editor of The Alumnus. A portion of that interview follows.—Editor's Note.)

a major event in his life. Because of his isolation, he went into a strange new world in Lexington. We did not have the mobility the student has today.

Now, in the years since then, a period of almost 40 years, we have seen a tremendous change come to Kentucky's educational system. A lot of it has stemmed from the fact that people are more mobile. A lot of it is because people are more aware of the needs of education. The legislature's budget for the University reflects that recognition.

I think the big thing, as I see it in Kentucky, is the improved climate throughout the state for higher education. I think a recognition is now present that wasn't prevalent in my early days. I think that people are more willing to support the University because they recognize that the University must be the center of progress that Kentucky must make.

The University of Kentucky, of course, is no longer a state or regional university but one of national scope. It is expanding, as all great universities. At the same time, it has an obligation to the Kentucky community and to the local students. The University, as Dr. Oswald said, is performing a dual role which is inevitable in the growth of this university.

Returning to the University after 40 years, when the enrollment was something like 2,000 students, is a breathtaking spectacle. It's hard to realize this much progress has been made in the intervening years. It's difficult to imagine the effort being made at the University in meeting the problems imposed by changing national aims and aspirations.

Bigness, the new needs, research and all the requirements that fall on the University of Kentucky are among those problems. I am proud to see the University move along its present directions. I think it is under strong leadership in Dr. Oswald. I think he sees very clearly where the University must go. He is taking steps in that direction; he has gathered brilliant men around him and I'm sure the University will attract more in teaching, research and service.

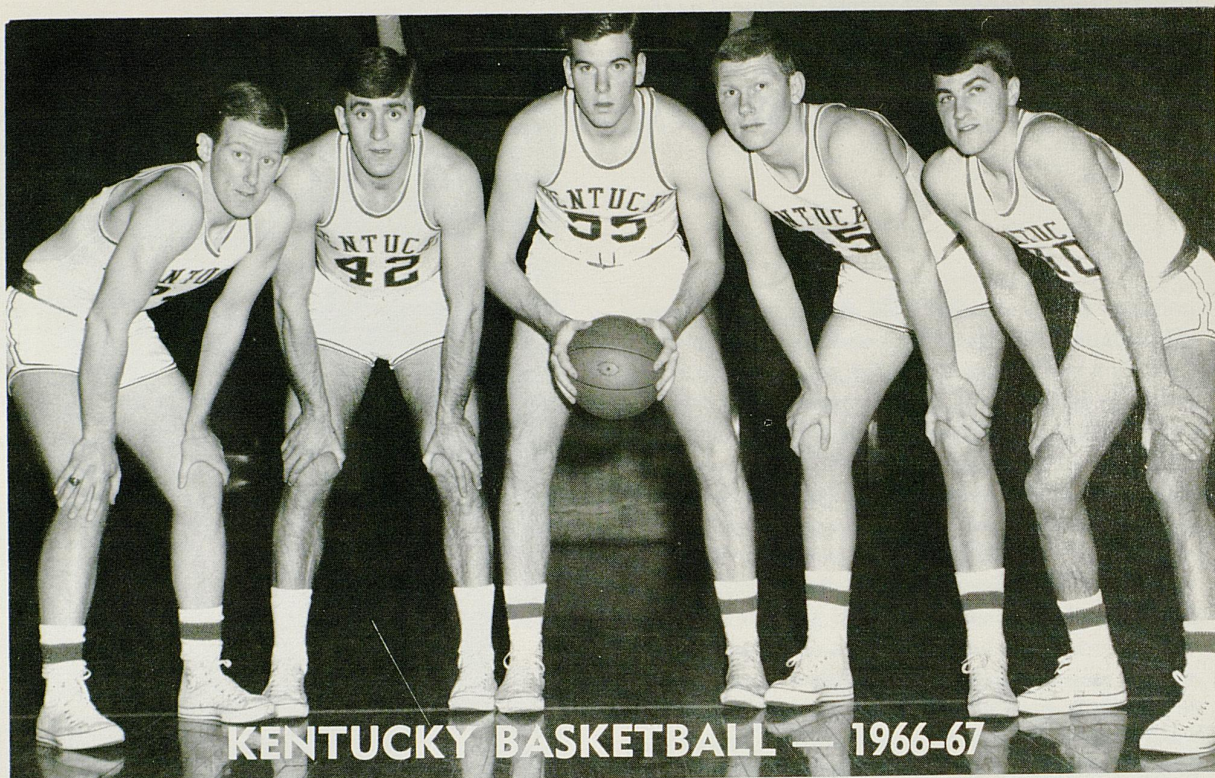
I think we will see the University of Kentucky emerge as one of the great universities of this country.

Eastern editors get the red carpet treatment as they arrive at the Blue Grass Airport to be guests of the Alumni Association at the second annual national editors conference.



Don Whitehead served on the alumni committee when noted editors visited the campus. T. George Harris, senior editor of Look Magazine, is on the right. Next is Mrs. William Emerson, Jr., and Mr. Emerson, editor of The Saturday Evening Post. Mrs. Harris is on the left. Mr. Harris is a U.K. alumnus, a former resident of Todd County.





KENTUCKY BASKETBALL — 1966-67

**UNIVERSITY OF KENTUCKY
BASKETBALL SCHEDULE — 1966-67**

1966

Dec. 3 (Sat.)	Virginia	Lexington
Dec. 5 (Mon.)	Illinois	Lexington
Dec. 10 (Sat.)	Northwestern	Evanston
Dec. 13 (Tue.)	North Carolina	Lexington
Dec. 17 (Sat.)	Florida	Lexington
Dec. 22 (Thurs.)	U.K.I.T.	Lexington
Dec. 23 (Fri.)	(Penn State, Kansas State, Oregon State, Kentucky)	
Dec. 28 (Wed.)	Cornell	Lexington
Dec. 31 (Sat.)	Notre Dame	Louisville

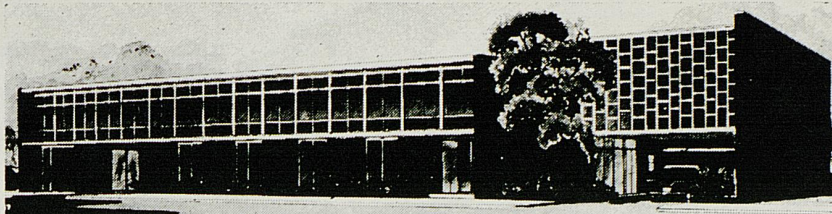
1967

Jan. 5 (Thurs.)	Vanderbilt	Lexington
Jan. 14 (Sat.)	Florida	Gainesville
Jan. 16 (Mon.)	Georgia	Athens
Jan. 21 (Sat.)	Auburn	Lexington
Jan. 23 (Mon.)	Tennessee	Lexington
Jan. 28 (Sat.)	Louisiana State	Lexington
Jan. 30 (Mon.)	Mississippi	Lexington
Feb. 4 (Sat.)	Louisiana State	Baton Rouge
Feb. 6 (Mon.)	Mississippi	Oxford
Feb. 11 (Sat.)	Mississippi State	Lexington
Feb. 13 (Mon.)	Tennessee	Knoxville
Feb. 18 (Sat.)	Mississippi State	Starkville
Feb. 20 (Mon.)	Georgia	Lexington
Feb. 25 (Sat.)	Alabama	Tuscaloosa
Feb. 27 (Mon.)	Auburn	Auburn
Mar. 4 (Sat.)	Vanderbilt	Nashville
Mar. 6 (Mon.)	Alabama	Lexington

The group pictured above seems the most likely choice as a starting combo for 1966-67. From the left are Bob Tallent, All-America Pat Riley, SEC Soph of the Year Thad Jaracz, 6-8 Cliff Berger and All-America Louie Dampier. Baron Adolph Rupp (below) starts his 37th season at UK as the nation's winningest cage mentor.



The Downtowner Motor Hotel



LEXINGTON'S FINEST — 155 ROOMS — RESTAURANT — COCKTAIL LOUNGE — CONFERENCE ROOMS
PARK AT YOUR FRONT DOOR — TV — HI-FI — RADIO — PHONES — SWIMMING POOL
347 EAST MAIN — JUST EAST OF ROSE

Two Big, Modern Department Stores To Shop In

BEN SNYDER

DOWNTOWN • EASTLAND SHOPPING CENTER

Open a Ben Snyder Charge Account for Fast, Easy Shopping

"IRRESISTIBLE" Your Home in Modern, Provincial

or Early American, by . . .



ROBERTS

Furniture Company

Established
1893

• Open Monday Night
to 9 . . . for Your
Shopping Pleasure!

425 W. MAIN • FREE PARKING AT SIDE DOOR

MAGNA-GRAPHIC

INC.

MANUFACTURERS OF FINE PRINTING PLATES

Offset — Photo-Engravings — Matrices

Four Color Process Separations

430 WEST SHORT ST.

LEXINGTON, KY.





Why wait for her to pout?
VOLUNTEER...to take her out
for dinner at **Jerry's** Restaurant

Listen to U of K Warm-Up Time with Cawood Ledford
ON WHAS 840 RADIO
Brought To You By Jerry's

