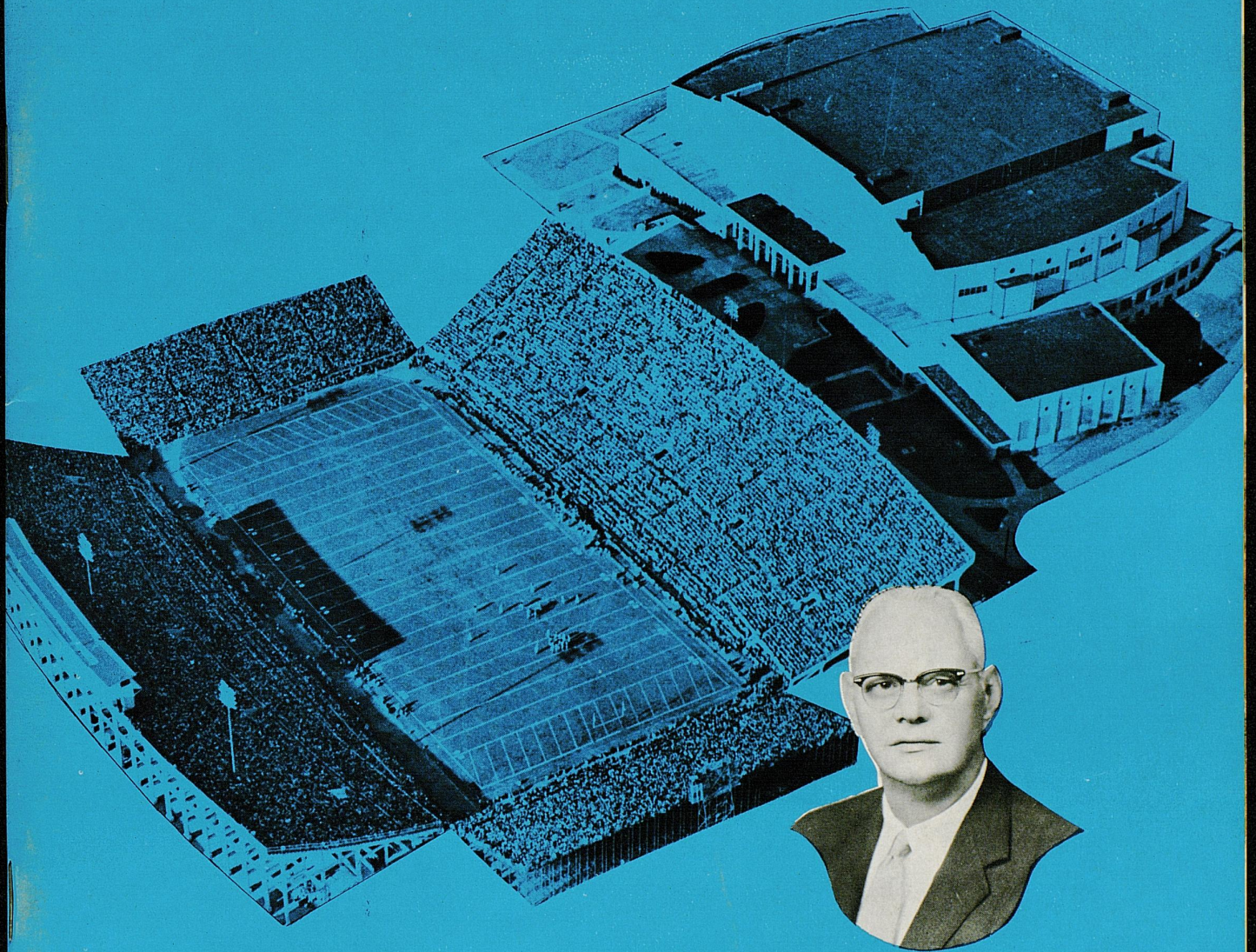


Copy 2

KENTUCKY vs DETROIT



BERNIE A. SHIVELY
Director of Athletics
University of Kentucky

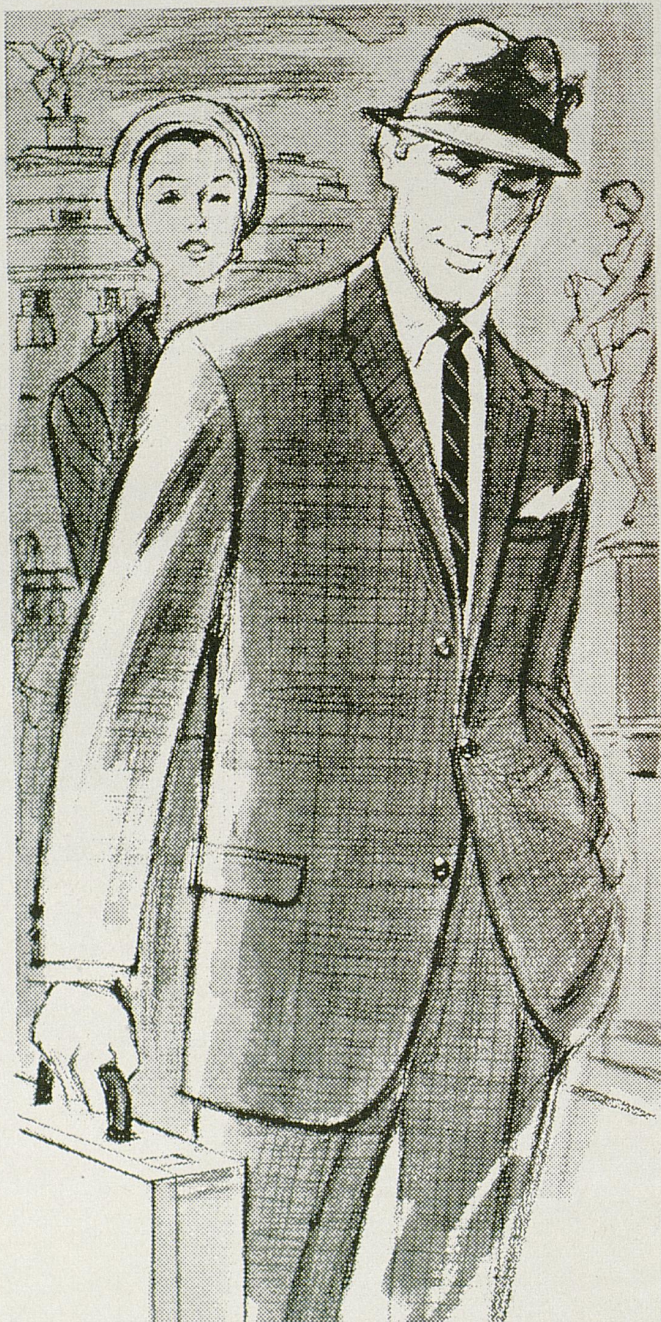
STOLL FIELD • OCTOBER 12, 1963 • OFFICIAL PROGRAM • 50c Est. Price .48
Tax02

Dawahare's

1817-1837 Alexandria Drive

Phones 277-5733 • 277-5734

Gardenside Plaza



OTHER STORES

- ★ HAZARD
- ★ PIKEVILLE
- ★ WHITESBURG
- ★ NEON



**Hyde Park
Clothes**

PLENTY FREE PARKING
STORE HOURS—10 a.m.
till 9 p.m.

Monday thru Saturday

First National Charge
30 Day Charge—
6 Month Revolving Charge



*Central Kentucky's Leading
Department Store Since 1887!*

in DOWNTOWN LEXINGTON
Kentucky's Friendliest Shopping Center

The "WILDCAT" by



OXFORDS

- Black Grain
- Brown Grain

18⁹⁵
pair

- Hand-sewn Mocassion Construction
- Sizes 6½-13, A-B-C-D

SLIPONS

- Brown Grain
- Black Grain

Shoe Center — Main Floor

Purcell's

... Always Shop Purcell's For Your Family, Your Home, Yourself!

U.K. FOOTBALL



with **BILL SORRELL**

and **TED GRIZZARD**

WVLK • 590

PLAY - *by* - PLAY ... HOME *and* AWAY

PRESENTED BY

***Kentucky Central
Life Insurance Company***



*Your Key to Security
Since 1902*

Kentucky's Oldest Life Insurance Company

Now Serving 30 States

**HOME OFFICE KENTUCKY CENTRAL BUILDING
LEXINGTON, KENTUCKY**

Wildcat Gridiron News

KENTUCKY vs. DETROIT

Despite the loss of one of the nation's leading passers, in the person of little Jerry Gross who kept the Wildcats in continual hot water during the last meeting, Detroit's Titans are right back as peppy and dangerous as ever as they invade the Wildcat lair for a third series meeting tonight.

The Motor City eleven's tutor, John Idzik, is not without individual stars at his disposal in a bid to even Detroit's season at the expense of Kentucky and these standouts could prove extremely troublesome in the event the youthful UKats entertain any illusions of taking their foe lightly.

Unlike the situation a year ago in Detroit, when the visiting Kentuckians had only the passing arm of Gross to worry about and solved the threat by a score of 27-8, the current Titans' big gun is a flashy soph quarterback who can also run the ball. Just a week ago, Tom Zientek stood 10th in the nation in total offense rankings with 313 big yards to his credit after Detroit's first two outings. To go along with the all-around, variable T play of Zientek, the Titans have another nationally-ranked threat in the person of sensational fullback Fred Beier. Going into last week's games, Beier was only a few steps behind Kentucky's flash soph Rodger Bird in ground gained from scrimmage. And still another Titan, Jim Walkosky, stood seventh in the country in scoring.

For its part, the Wildcats will also be on the lookout for season victory number two to even its record.

Kentucky, which the experts figured played its best football of the year in the second half of last week's Auburn contest, knows that the doing will not be easy. The Wild-

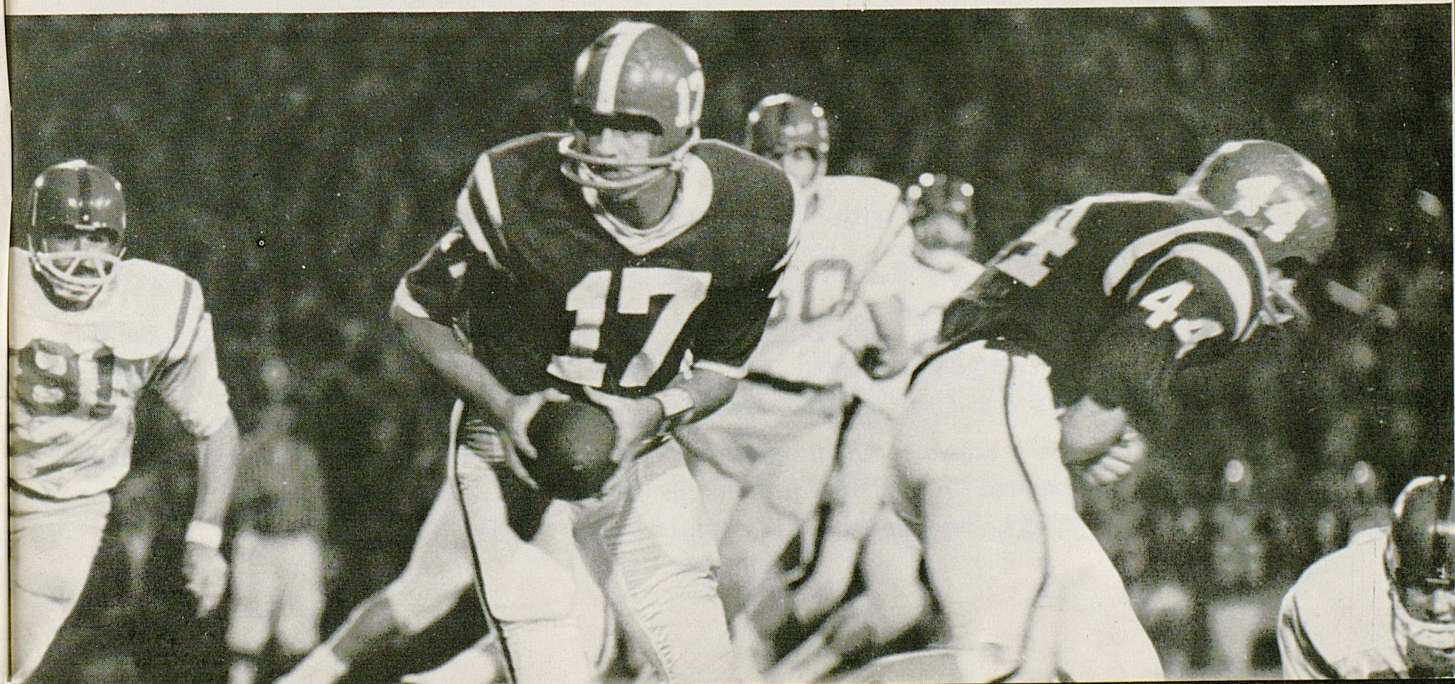
cats need only to think back to last year and a game with heavy underdog Xavier to consider the consequences of overconfidence. The Muskies trounced UK, 14-9, as the home club looked ahead to Tennessee . . . The situation tonight is closely similar: Detroit will be a decisive underdog in quest of a first series victory and Kentucky next week faces tough SEC rival Louisiana State.

Only two meetings on the gridiron are recorded between Kentucky and Detroit. Both games were played at Detroit with UK winning, 32-7, in 1959 and 27-8 last year.

COVER—Featured on tonight's cover is a pictorial representation of University of Kentucky's athletic plant situated along Avenue of Champions. Overseeing operations of one of the nation's top sports facilities is Director of Athletics Bernie A. Shively, former football All-American at Illinois. Memorial Coliseum (top) seats 11,500 for cage contests while UK's football stadium has a capacity of 37,500.

Edited by Ken Kuhn, Director of Sports Publicity
Published by University of Kentucky Athletics Association
Represented for National Advertising by
Spencer Advertising Co., New York

ELBOW ROOM WANTED—Kentucky's sophomore quarterback, Rick Norton (17), seems to be looking around for elbow room for a hand-off or pass-run option as Ole Miss tacklers close in on him in a game at Lexington two weeks ago. In the photo, Norton has just faked to his fullback, Ken Bocard (44), who helps along the illusion by appearing to hold the ball to his middle. Coming up fast are Rebel tacklers Allen Brown (80) and Rollo Moses (60).





**the honorable
BERT T. COMBS**

Governor of Kentucky

Closing out a four-year term as Governor of the Commonwealth of Kentucky, Bert Thomas Combs is able to look back with a special degree of pride on a distinguished career of public service that carried him up through the ranks to the chair of chief executive.

The 52-year-old public servant, who in his capacity of Governor also serves as chairman of the University of Kentucky Board of Trustees, began his career as a lawyer immediately upon graduation from the UK College of Law in 1937 and later entered political life when he became city attorney of Prestonsburg. He next held the post of Commonwealth Attorney for the 31st judicial district of the state and from 1951 to 1955 served as a judge on the state's highest tribunal, the Court of Appeals.

His distinguished background also includes service as a captain in the Judge Advocate General's Department and he was the recipient of both the bronze star and the medal of merit during Army service.

During his administration as Governor, an office to which he was elected in 1959, the State of Kentucky has made outstanding progress in many fields—including education, agriculture, industrial development, highway construction and social welfare.

Governor Combs is a native of Manchester in the Eastern Kentucky mountain area and worked his way through Cumberland College prior to entering the University Law School. He is married to the former Mabel Hall and they have two children, Lois Ann and Thomas George.



Sports lovers of the world, unite . . . let's all go Wildcat-ing!

Face it—if you're the rocking chair, watch-it-on-TV type, forget the wild, wild '64 Buick Wildcat. But if you like your action furious and first-hand, Wildcat is for you! You can bark your signals to a regular 325 hp V-8 formation, or really take to the air with a 340* or 360* hp passer. Three scat-back transmissions add to your fun: 3-speed synchromesh; 4-speed synchro stick shift on the floor*, or Buick's new trigger-quick Super Turbine 400 automatic* (very sparing with gas, too!). Four new models: 4-dr. hardtop; 2-dr. sport coupe; 4-dr. sedan; convertible. Give one a workout; see why we say . . .

*Optional at extra cost.

Buick Motor Division

above all, it's a BUICK!

ALONG THE WILDCAT TRAIL

KENTUCKY 33, VIRGINIA TECH 14

It took only 14 seconds for University of Kentucky's rookie-dominated Wildcats to prove that inexperience is only a state of mind and the '63 sophomores built that premise into a thrilling, 33-14 trouncing of Virginia Tech before a season-opening audience of 35,000 at Stoll Field. The victory was Kentucky's first since 1958 in an opening game.

Dazzling soph scatback Rodger Bird, the Corbin Comet who bids to be the greatest of the fabulous athletic Bird brothers, raced back the game-opening Gobbler kickoff a near-record 92 yards to a touchdown that put Kentucky's thoroughbreds off and running. The slender, 5-11 and 184-pound speedster paced the most explosive UK offense seen in many a moon by racking up another 157 yards from scrimmage in 19 trips for an incredible, 8.3 average during the remainder of the contest.

That remarkable first score, only a mere three yards shy of the all-time school record for kickoff returns, set the stage for a not-to-be-denied effort by the young Wildcats but victory did not come easy.

Virginia Tech struck back quickly to tie the score at 7-7 in the late stages of the opening period and notched another touchdown during the second quarter after Kentucky had forged ahead for the second time on an 81-yard march capped by Ken Bocard going over from the eight.

The fierceness of the Cat-Gobbler battle was attested by the 14-14 halftime deadlock, but Kentucky was just getting started. Charlie Bradshaw's young charges, who received tremendous leadership from the older hands like Herschel Turner, put the game beyond reach of ex-Wildcat Jerry Claiborne and his VPI invaders with a tie-breaking TD late in the third quarter, and a pair of fourth-quarter clinching tallies.

Bird picked up the third UK score as he crossed the visitors' goal line for the second time in the evening and the other Wildcat markers were added by halfback Bobby Kosid and quarterback Talbott Todd. John Andrighetti, another sophomore, accounted for three extra points by kicking. Extra point pass attempts after the other two scores failed.

MISSISSIPPI 31, KENTUCKY 7

Defending Southeastern Conference champion Mississippi, itself humiliated a week earlier by a scoreless tie, unleashed all its offensive fireworks in an awesome display of rebounding strength that found the Kentucky defense wanting to the tune of a decisive, 31-7 victory.

The fired-up Rebels put three points on the Stoll Field scoreboard with a 31-yard field goal the first time they had the ball and exploded for three "cheap" touchdowns during the second period for a 24-0 halftime advantage that rocked Kentucky hopefuls to the core. Unable to cope with the fearsome power of Ole Miss and victims of their own mistakes—particularly pass defense—the Wildcats settled

down in the second 30 minutes of action to hold the visitors to just one more score.

But the outcome was sealed as the Johnny Rebs held a potentially explosive Kentucky offense in check all the way with the aid of key pass interceptions. Coach Charlie Bradshaw's sophomore-dominated force avoided the humiliation of a shutout only through the alertness of fullback Ken Bocard, who picked off an Ole Miss pass midway of the final quarter and scooted 22 yards to score followed by a successful PAT kick by John Andrighetti.

In the final analysis, Kentucky went down to its disheartening defeat due to an inability to cope with the big Mississippi line (220-pound average) and because of costly pass defense errors. Time and again, the Wildcats failed to capitalize defensively on third and long yardage situations that Ole Miss found itself confronted with. All three of the Rebel touchdowns in the first half came on third down with 10 or 12 yards to go.

Poor protection for quarterback Rick Norton and bad adjustments to the Mississippi defense kept the Kentucky attack in check virtually all evening with the result that only 135 yards were netted for the UK cause.

AUBURN 14, KENTUCKY 13

Charlie Bradshaw and his youthful Wildcats came to win and, when the slashing battle in Auburn's Cliff Hare Stadium had roared to a close, Tiger partisans were the first to admit that Kentucky had the better team at the end and the home club was indeed lucky to come out on the long end of a 14-13 count.

After a frustrating first half of action in which Auburn's powerful backs punched away almost at will for long yardage through a porous Kentucky defense, the Blue Grass eleven suddenly came to life after the intermission. The Wildcats, behind the vastly improved passing artistry of quarterback Rick Norton and the hard running of other backs, completely dominated the second thirty minutes.

Only the failure of a gamble (which everyone praised) in the third period and a field goal try that came close during the final stanza kept the Kentuckians at bay as they displayed a vastly improved brand of play. The key play of the afternoon came after Kentucky had rallied to push over a second touchdown. Going for broke, Norton pitched a two-point PAT strike to halfback Bob Kosid. The ball bounced away as Kosid was hit hard by Auburn defenders and then almost caught second handed by end Rick Kestner.

Now behind, 14-13, UK got one more golden opportunity. Tackle Herschel Turner pounced on a fumble at the Auburn 10 late in the game and, after losing seven yards in three tries at advancing the ball, John Andrighetti tried a field goal. The pigskin, kicked from a bad angle to the right, traveled straight but passed wide to the left.

Kentucky had possession only one more time—deep in their own territory—and had to stave off a closing Auburn threat.



JOHN W. OSWALD
President
University of Kentucky



University's New President Knows Value of An Athletic Program . . .

Dr. John Wieland Oswald, new president of the University of Kentucky, is an educational administrator who believes organized athletics have a definite place within the university community.

Having himself been a college athlete, Dr. Oswald is now one of the staunchest supporters of the teams wearing the Blue and White. However, he advocates that any campus athletic program should be kept within the proper perspective and that over-adulation should be avoided.

Dr. Oswald served as vice-president for administration at the University of California before becoming the sixth chief executive of UK.

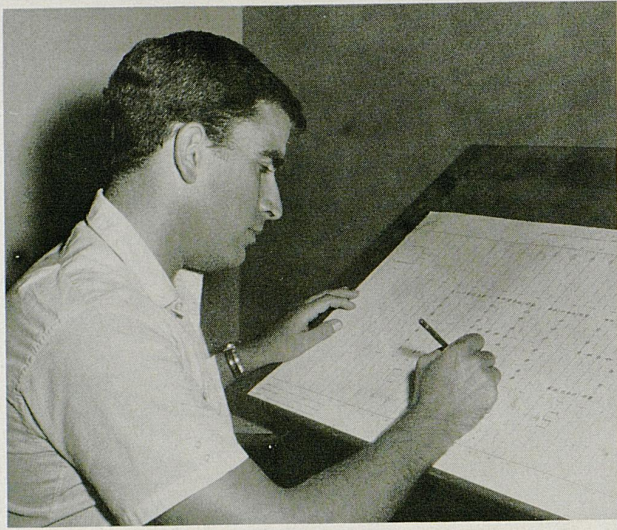
The native of Minnesota did his undergraduate work at DePauw University where he majored in botany. He played varsity football—captaining the DePauw eleven in 1937—and earned letters in basketball and track.

He was awarded a Ph.D. degree in plant pathology at the University of California in 1942 and entered the U.S. Navy the same year. As a PT boat skipper and later, as a divisional commander, he participated in over 50 missions in the Mediterranean.

After World War II, Dr. Oswald returned to academic life and advanced through the ranks at the University of California. He has published over 70 papers on plant pathology investigation and has done research work in the Netherlands under Fulbright sponsorship.

In 1962, he was named to the Sports Illustrated Silver Anniversary All-America, an award the magazine confers upon former college football players for outstanding achievement in their chosen professions.

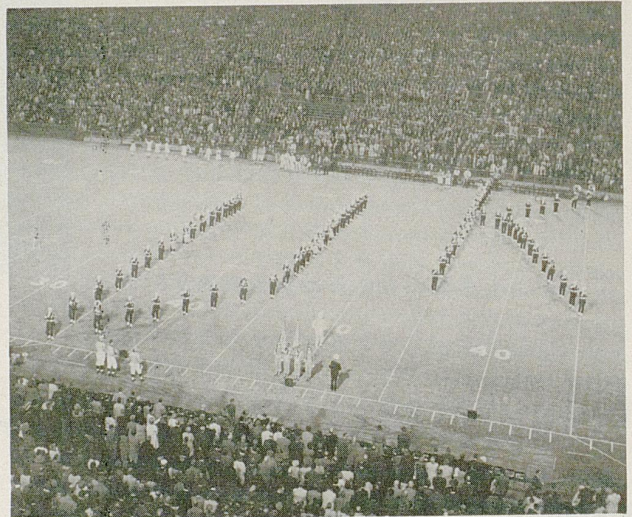
Other members of the Oswald family are his wife, the former Rosanel Owen of Alabama, their two daughters, Elizabeth and Nancy, and John, Jr.



All-American Spirit at U. of K.

LEADER OF THE BAND—In his second year as director of the University of Kentucky "Marching 100" band is Phillip Miller (pictured above). The transplanted Texan is personally responsible for the varied and intricate formations that make up the interesting band shows at halftime and each movement is charted out in advance.

ON, ON U. OF K.—The Kentucky band, once dubbed by sportswriters as "The Best Band In Dixie," demonstrates how it still lives up to the tradition by forming this slanting UK during the Mississippi game. This formation is only one in a vast repertoire that lend added color to Wildcat football games and help boil up All-American student spirit.



EIGHT CHEERS FOR WILDCATS — Among the most rabid supporters of the Wildcats are the cheerleaders, who virtually "live and die" as the fortunes of their favorites fluctuate on the field. This year's cheerleading corps includes attractive coeds (back row, left to right) Mary Gail McCall, Ida Mae McLaughlin, Cissy Snyder, Ginger Martin, Judie Wylie; (front) Ann McDonald, Paula Choate and Debbie Delaney.



BERNIE A. SHIVELY

Director of Athletics
University of Kentucky



Bernie Shively — A Man Of Many Talents . . .

Nationally recognized for his direction of one of the nation's most balanced collegiate athletic programs, University of Kentucky's veteran Director of Athletics Bernie A. Shively is truly a gentleman of many talents.

He gained his greatest fame as a football All-America guard at Illinois in 1926 on the same grid outfit made famous by the immortal Red Grange. And, demonstrating a claim to being one of the finest all-around athletes in Illinois' history, Shively also laid claim to the Big 10 heavyweight wrestling crown and annexed letters in track before graduating in 1927.

Following his graduation, Shively came to Kentucky as a line coach in football. During his 35 years of service to the Kentucky athletic program, "Shive" also served as head football coach one season (1945), track coach and baseball coach as well as heading up the University's Physical Education Department. He became Director of Athletics in 1938.

For almost as long as the Southeastern Confer-

ence played a post-season basketball tournament, Shively served as chairman and the experience had stood him in good stead as he now directs the University's own highly-successful Invitational Tournament and supervises the NCAA Basketball Tournament in the capacity of committee chairman.

Shive also tried his hand at basketball officiating in the SEC for about 20 years and served several seasons as Supervisor of Officials for the Ohio Valley Conference. He is a past chairman of the NCAA's summer baseball committee and since 1954 has been president of the SEC Coaches and Athletic Directors Association. In addition, he has found time to be active in civic and University projects.

A native of Paris, Ill., Shively and his wife, Ruth, have two children. A son, Doug, was co-captain of the Wildcat football team in 1958 and now is an assistant grid coach at Virginia Tech. Daughter Suzanne was a Phi Beta Kappa graduate of UK in 1957.

WLEX-TV

NBC CBS

CHANNEL

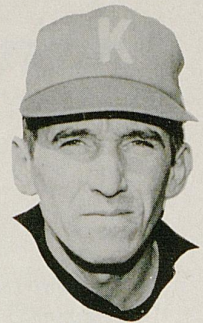
18

For Complete Football Coverage!

U OF K FOOTBALL WITH COACH BRADSHAW

Head Coach Charlie Bradshaw brings you complete game films and personal comments.

**SUNDAYS
at 5:30 PM**



Brought to You by *MR. WIGGS* Discount Department Store

NCAA COLLEGE FOOTBALL

Top collegiate games of the week!

SAT. AFTERNOONS

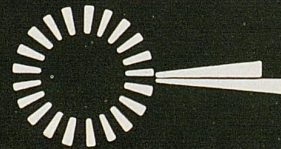
CLEVELAND BROWNS

Pro football at its exciting best!

SUN. AFTERNOONS

KEEP UP WITH SPORTS — WATCH WAYNE BELL DAILY

MR. WIGGS
DISCOUNT DEPARTMENT STORE



ON NEW CIRCLE ROAD BETWEEN RICHMOND ROAD AND WINCHESTER ROAD. NEAR LIBERTY PIKE

Presents

KENTUCKY FOOTBALL

With

HEAD COACH CHARLIE BRADSHAW

Every Sunday from 5:30 to 6:30 p.m. on Channel 18

CHARLIE BRADSHAW

Head Football Coach
University of Kentucky



Wildcat Coach Has Qualities For Success . . .

The personification of qualities of inner toughness, outwardly serious demeanor, quiet determination, ability, confidence and integrity . . . That's Kentucky's head football coach.

Charlie Bradshaw, 38-year-old ex-Wildcat player and assistant coach, fulfills all these qualities that are the background for success and goes a step further . . . He's an inspirational leader who exudes the toughness that it takes for those around him—staff and players—to get the job at hand done in a way that will pay off with success.

He believes in the direct approach and in the short span of just one season has instilled his formula in the minds of his charges. Kentucky footballers are now convinced that success is approached only through determined hard work.

Bradshaw's football philosophy was schooled into him as a player by Paul (Bear) Bryant and influenced by nine years of experience in an

assistant coach capacity at UK and Alabama.

Born and raised in Montgomery, Ala., Charlie played football at Sidney Lanier High before coming to Kentucky as a 1942 gridder. He didn't see any action that year and withdrew from the University after one semester to enter the Marine Corps.

He returned to UK to play end for the 1946, '47 and '48 seasons and for three games in 1949 before being ruled ineligible by the Southeastern Commissioner. He remained on the Bryant staff as a student assistant and then returned to Sidney Lanier as a coach and co-ordinator in 1950.

In 1954, he came back to Kentucky as an aide on the Blanton Collier staff and stayed until 1959 when he moved to Alabama and an offensive coaching job under Bryant.

He was hired to replace Collier here on Jan. 10, 1962, and was extended a four-year contract.

1963 FOOTBALL SCHEDULE AND RESULTS

Date	Opponent	Site	UK	Opp.	Date	Opponent	Site
Sept. 21	*Virginia Tech (H)	33	14	Oct. 26	Georgia (Homecoming)	.. Lexington
Sept. 28	*Mississippi (H)	7	31	Nov. 2	Miami (Fla.) Lexington
Oct. 5	Auburn (A)	13	14	Nov. 9	Vanderbilt Nashville
Oct. 12	*Detroit	Lexington		Nov. 16	Baylor Waco
Oct. 19	*Louisiana State	Baton Rouge		Nov. 23	Tennessee Lexington

* Night game.

<p>LEXINGTON PHOTO ENGRAVING CO.</p> <p>223 W. Short Tel. 255-5015</p>	<p>If your GOAL is "Fast Production — Fine Reproduction" for your printing needs, RUSH to left GOAL for letterpress plates, or RUSH to right GOAL for offset plates. Let us TACKLE your plate-making to END your problems. PASS them to our CENTER and you will GUARD against a KICK in the final RUN.</p>	<p>LEXINGTON PHOTO LITH INC.</p> <p>1600 N. Lime Tel. 299-1378</p>
---	--	---

Now In Lexington...

ONE OF THE SOUTH'S *Finest* Motels



<ul style="list-style-type: none"> 110 Luxurious Rooms • Banquet & Meeting Rooms • Swimming Pool & Patio • 	<ul style="list-style-type: none"> Cocktail Lounge Two Dining Rooms Dancing Nitely 	<p>Imperial House Motel U.S. 68 Waller Ave. at Harrodsburg Road Phone 255-2540 for Reservations</p>
---	---	--





Left to right—Ralph Hawkins, George Sengel, Jim Carmody, Dave Hart, Bud Moore, Head Coach Charlie Bradshaw, Assistant Head Coach Matt Lair, Homer Rice, Bill Jasper, George Boone and Ray Callahan.

Wildcat Coaching Staff

University of Kentucky's football coaching staff this season presents a composite picture of youth plus experience. Statistics on Head Coach Charlie Bradshaw and his 10 full-time aides provide an average look of only 33 years of age but a background of no less than nine years in the profession of tutoring football. All told, the staff represents 101 years of coaching experience.

MATT LAIR (Kentucky '48)—First UK aide ever to hold the title of Assistant Head Coach . . . Played as a blocking back and guard on same Wildcat teams as Coach Bradshaw . . . The 39-year-old North Middletown native has background of 16 seasons of grid tutoring, including five previous years at UK (1954-58), two at Texas A & M, one with Texas Tech . . . Works primarily with defensive line.

HOMER RICE (Centre '51)—Entered collegiate field in 1962 after nine championship seasons and seven undefeated campaigns during 11 years in Kentucky-Tennessee high schools . . . Aggregate record 101-9-7 for period . . . Won seven "Coach of the Year" awards . . . Little All-America QB at Centre . . . The 36-year-old native of Ft. Thomas is charged with making UK's offensive operations go.

DAVE HART (St. Vincent '50)—Newly assigned to the responsibility of defensive coach of the Wildcats, Hart is former highly-successful schoolboy tutor in Pennsylvania . . . Compiled 86-18-3 record in 11 years, last eight at Johnstown . . . The 37-year-old native of Connellsville, Pa., was the state's AAA "Coach of the Year" in '58 . . . Invaluable recruiter.

GEORGE SENDEL (Kentucky '48)—Louisvillian Sengel's career as a Wildcat wingman overlapped that of Coach Bradshaw by a couple of years and his former teammate asked Sengel to stay on the staff he had joined in 1961 . . . The 40-year-old Air Force vet had nine years of coaching in schoolboy ranks in Florida and Kentucky prior to becoming UK end coach.

BUD MOORE (Alabama '61)—A 23-year-old Birmingham, Ala., native, Bud picked up his initial playing and coaching experience under Paul Bryant and Charlie Bradshaw at Alabama . . . He was a star end and tackle for the Tide in the 1958-60 period, served briefly as student assistant and coached one year at Gadsden (Ala.) High before joining Bradshaw staff at UK in 1962.

GEORGE BOONE (Kentucky '61)—One of the most determined players ever to wear the blue and white of UK, Boone started out on his own but soon won scholarship aid and became outstanding tackle . . . The 25-year-old Louisvillian stayed on Wildcat coaching staff in part-time role after completing eligibility in 1960, became regular coach following year and retained by Bradshaw as a line assistant.

RALPH HAWKINS (Maryland '57)—One of the most valuable coaches on the staff, Hawkins has background of collegiate and professional play plus coaching experience in both schoolboy and college ranks . . . The 28-year-old bachelor from Washington, D.C., was freshman coach at Maryland before joining New York Titans . . . Coached high school ball in D.C. and served as backfield assistant at SMU.

BILL JASPER (Tennessee '52)—A native Kentuckian from Somerset who traversed a route through enemy territory enroute to joining the Wildcats, Jasper is former star linebacker at Tennessee . . . Joined the Bradshaw staff in 1962 with successful record for 10 years' work in Kentucky and Tennessee high schools . . . Supervises gridgers' academic program . . . 34 years old.

JIM CARMODY (Tulane '56)—Newest addition to the Bradshaw staff, Carmody transfers allegiance from alma mater Tulane where he was an outstanding center and later (1961-62) an assistant coach . . . Coaching background of the 30-year-old New Orleans native also includes three-season stint at Holy Cross and championship year with Army team in Korea . . . Works with UK freshmen.

RAY CALLAHAN (Kentucky '56)—A newcomer to the staff but no stranger in Kentucky grid circles, 30-year-old former UK guard standout Callahan enters the collegiate field for the first time after successful high school career . . . The Lebanon native capped fourth season as head coach at Danville High by winning state AA title in 1962 and picking up personal honor as AA "Coach of the Year."

He gives 'first string' service . . .

THE FRIENDLY MAN WITH THE BETTER BRAND --

your Good Neighbor Ashland Oil Dealer. Always accommodating. Willing to take time to perform whatever special service you may need. Willing to give more of himself—and his services—because he takes pleasure in pleasing you. *This is the friendly man of Ashland Oil.*

Meet him. And try his top quality Ashland Oil products.

You'll see why more and more Kentuckians are driving in at the Ashland Oil Sign . . . whenever they need services or products.



ASHLAND OIL & REFINING COMPANY
Ashland, Kentucky

Lexington's Largest and Finest!

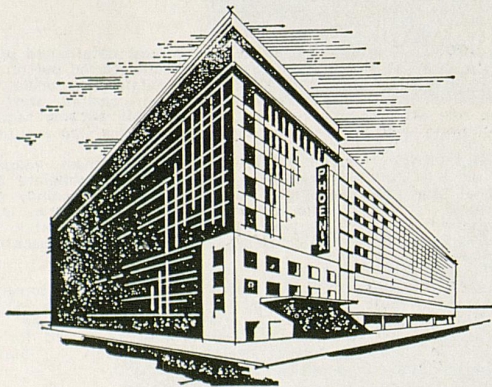
FEATURING

Le Deauville

RESTAURANT

and LOUNGE

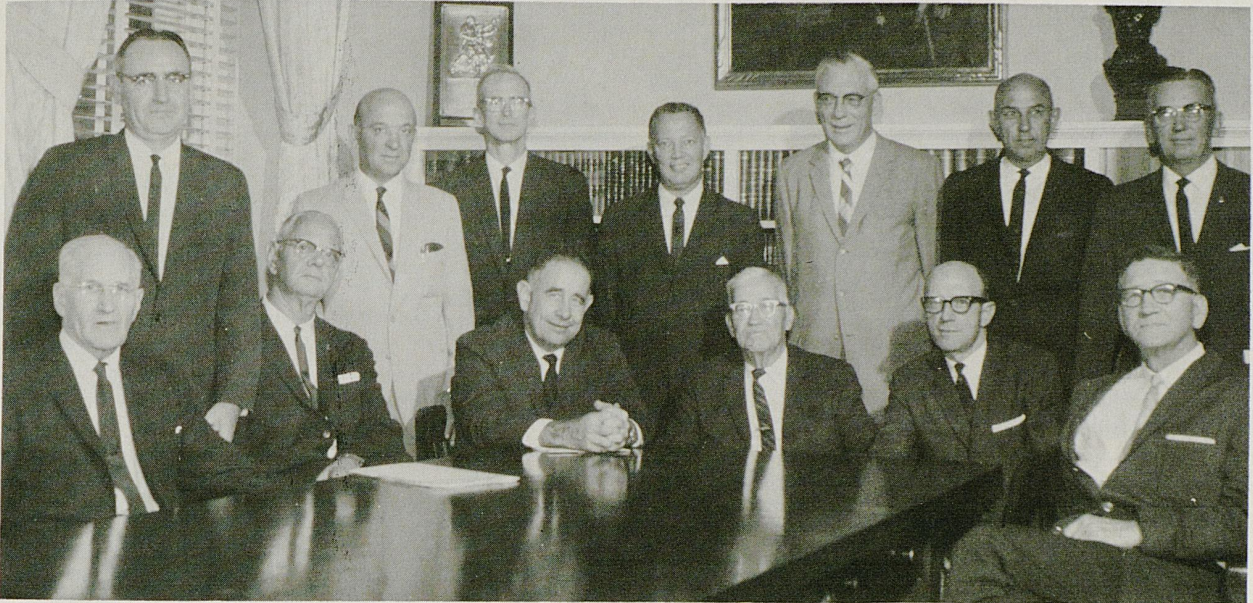
- FREE PARKING
- BEVERAGE & FREE ICE MACHINE ON EACH GUEST FLOOR
- 100% AIR CONDITIONED
- TV IN ALL ROOMS
- ALL ROOMS REMODELED AND REDECORATED
- COFFEE SHOP AND DINING ROOM WITH ECONOMICAL PRICES



Located in the heart
of the Bluegrass
120 E. Main St.
Downtown Lexington, Ky.
Phone 255-3210

PHOENIX HOTEL

UNIVERSITY OF KENTUCKY ATHLETICS BOARD



Members of the Board of Directors of the University of Kentucky Athletics Association include the gentlemen pictured above. Seated, from left to right, are Prof. John Kuiper, Director of Athletics Bernie Shively, President John W. Oswald (chairman), Dr. D. V. Terrell, Dr. A. D. Albright (vice-chairman) and Dr. A. D. Kirwan. Standing are Dr. Aubrey Brown, Dr. Ralph Angelucci, Dr. Loren Carlson, Dr. William Matthews, Prof. William Tolman, James B. Allen, and Dr. Lyman Ginger. Absent were Dr. Thomas Clark, Floyd Wright and Robert Stephens.

THE OFFICIAL WATCH
FOR THIS GAME



The World's Most Honored Watch

- * Winner of 10 World's Fair Grand Prizes
- * 28 World's Fair Gold Medals
- * Highest Observatory Honors for Accuracy

Premier Product of

Longines-Wittnauer
WATCH COMPANY

For Almost 100 Years, Maker of Watches
of the Highest Character



Throughout the world, no other
name on a watch means so much as

LONGINES

The World's Most Honored Watch
OFFICIAL WATCH

1960 OLYMPIC WINTER GAMES • 1959 PAN AMERICAN GAMES • 1960 U. S. OLYMPIC TRIALS • MAJOR NATIONAL AND WORLD CHAMPIONSHIPS IN ALL FIELDS BOTH HERE AND ABROAD

At Authorized

Longines-Wittnauer
JEWELERS



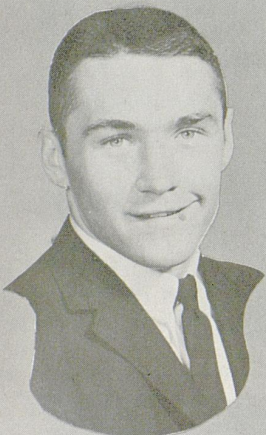
HERSCHEL TURNER



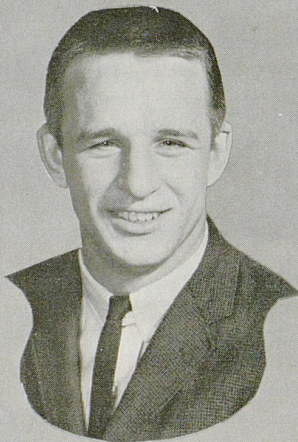
JIM MILES



TOM CHAPALA



HOWARD KEYES



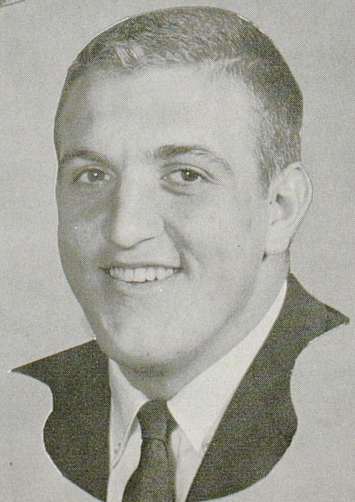
RICK NORTON



TOM BECHERER



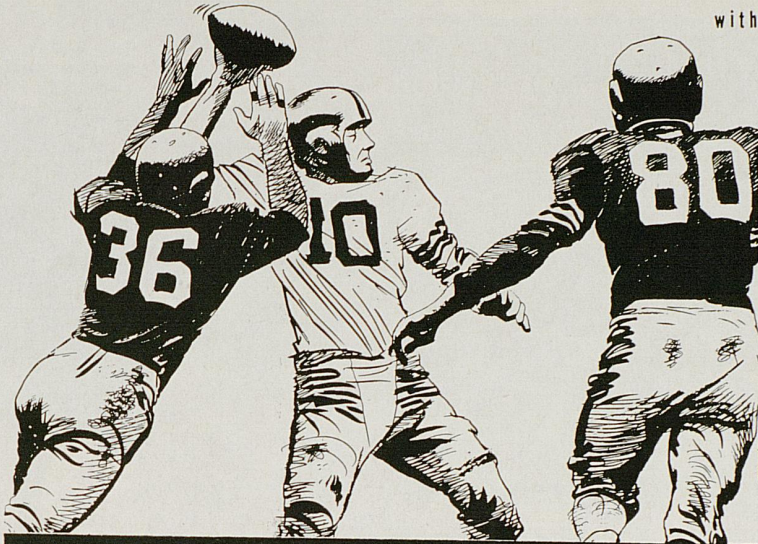
PHIL PICKETT



KEN BOCARD

FOLLOW **U** OF **K** ON THE STANDARD OIL NETWORK

with **CLAUDE SULLIVAN**



**1963
SCHEDULE**

Sept. 21*	Va. Tech	Lexington
Sept. 28*	Mississippi	Lexington
Oct. 5	Auburn	Auburn
Oct. 12*	Detroit	Lexington
Oct. 19*	L.S.U.	Baton Rouge
Oct. 26†	Georgia	Lexington
Nov. 2	Miami (Fla.)	Lexington
Nov. 9	Vanderbilt	Nashville
Nov. 16	Baylor	Waco
Nov. 23	Tennessee	Lexington

*Night Games †Homecoming

**STANDARD
OIL**

NETWORK

WINN, Louisville
WLAP, Lexington
WCMI, Ashland
WKCT, Bowling Green

WHIR, Danville
WFKY, Frankfort
WIEL, Elizabethtown
WHOP, Hopkinsville

WKYB, Paducah
WFTM, Maysville
WCTT, Corbin
WKIC, Hazard

WOMI, Owensboro
WPKE, Pikeville
WMLF, Pineville
WSFC, Somerset

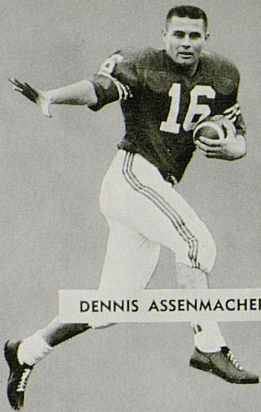
WINN
*every
University of
Kentucky
game
with
Kentucky's
Outstanding
Sportscaster
**CLAUDE
SULLIVAN***



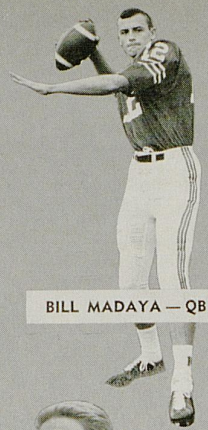
**WINN
LOUISVILLE**
*the Originating
Station for
**ALL U. K.
FOOTBALL**
on the
**STANDARD OIL
FOOTBALL
NETWORK***

W W N N
**CBS
RADIO
1240**

TITANS



DENNIS ASSENMACHER — HB



BILL MADAYA — QB



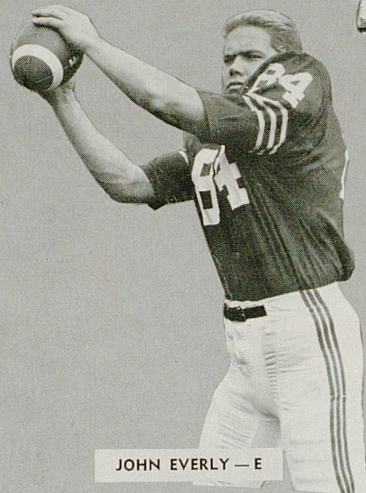
LEO ROSSI — T



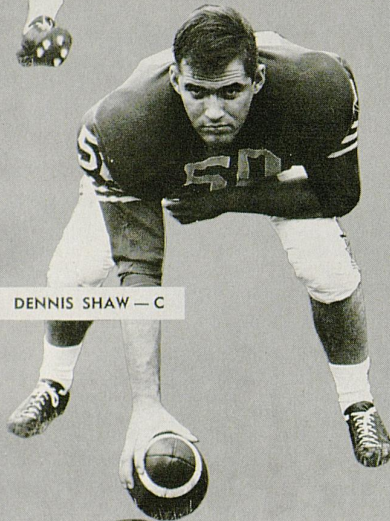
GARY WILKIE — FB



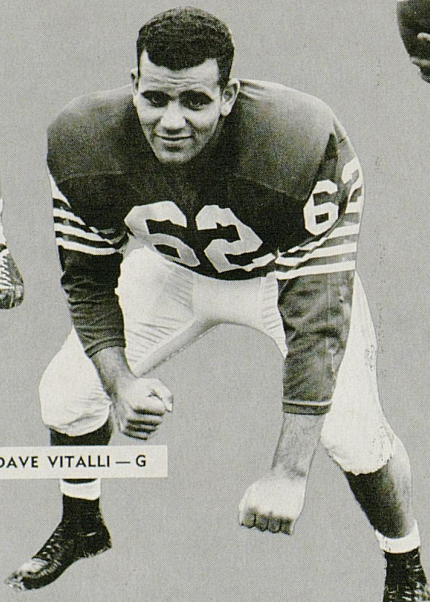
LARRY DRESSSELL — T



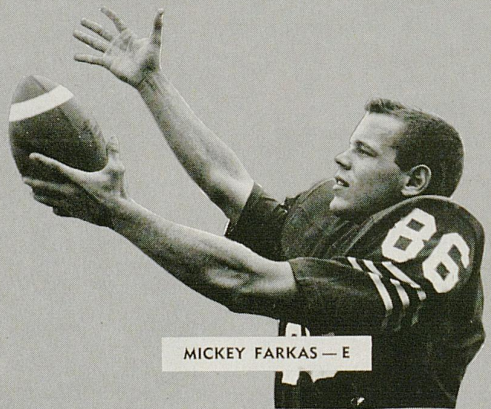
JOHN EVERLY — E



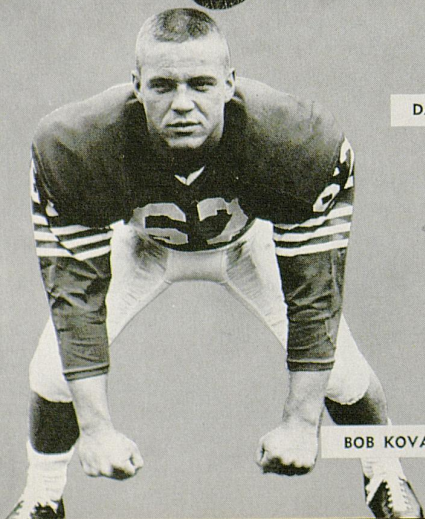
DENNIS SHAW — C



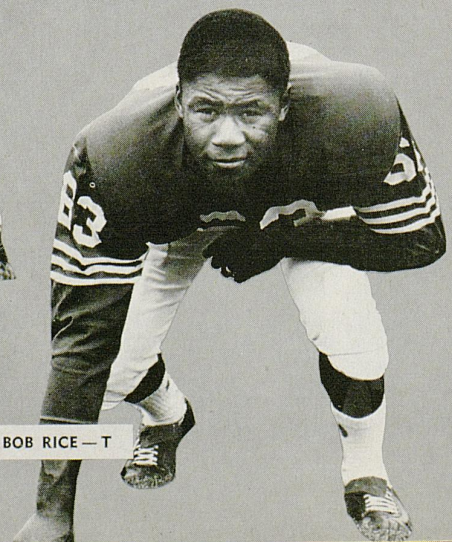
DAVE VITALLI — G



MICKEY FARKAS — E



BOB KOVAL — G



BOB RICE — T

University of Detroit



VERY REV. LAURENCE V. BRITT
President

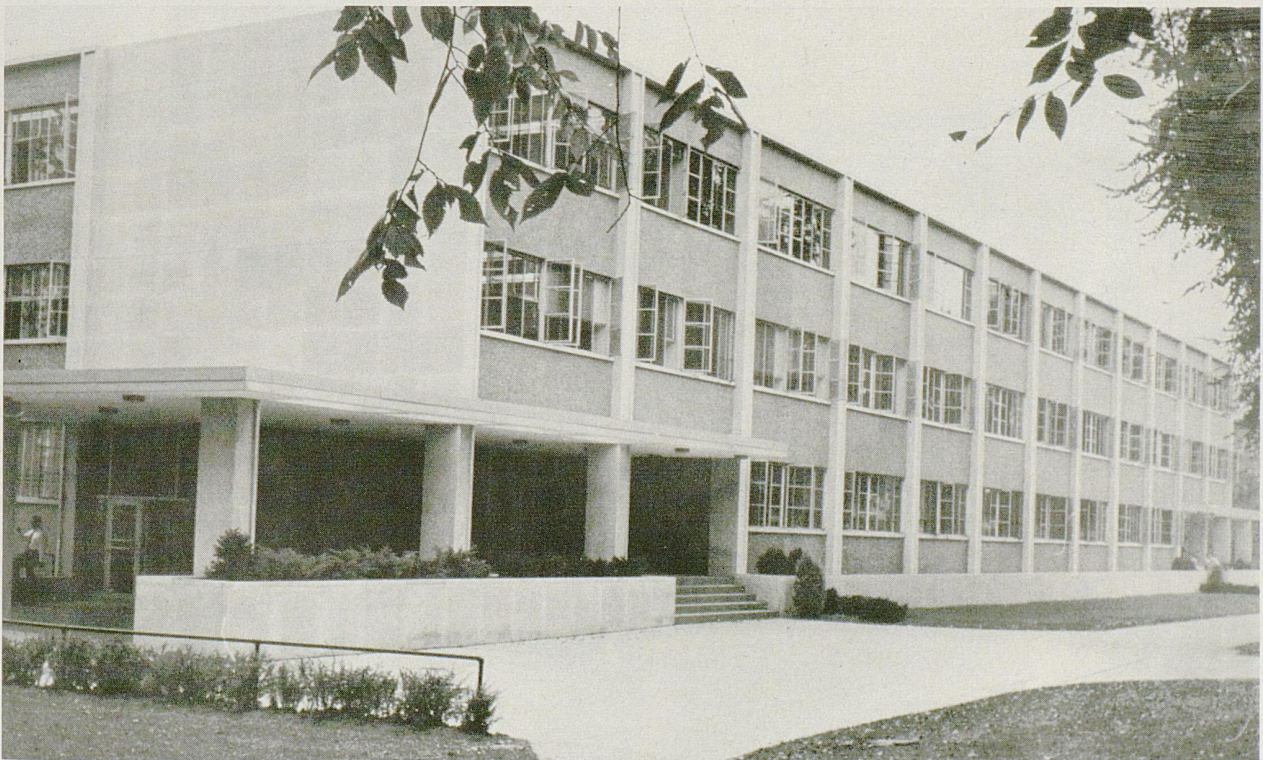


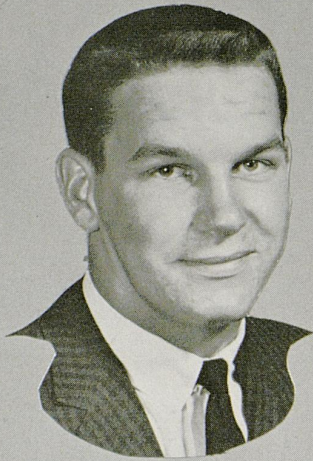
JOHN R. MULROY
Vice President—Athletics



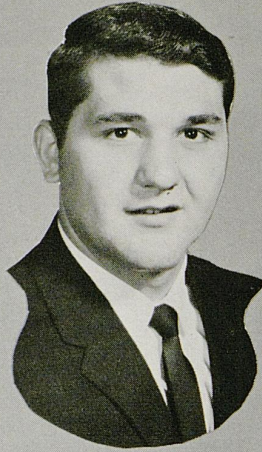
JOHN IDZIK
Head Coach

BRIGGS ARTS BUILDING

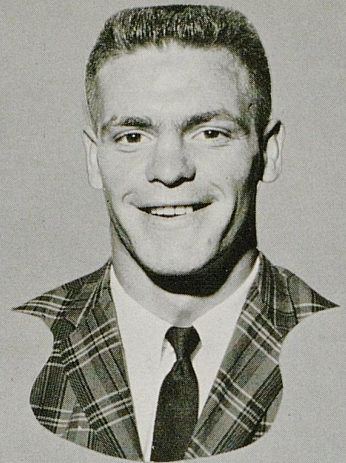




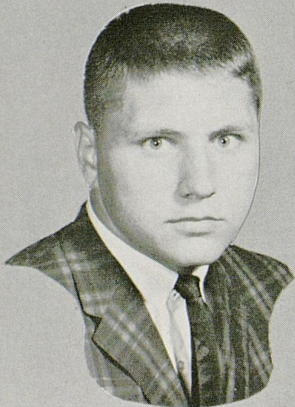
BILL JENKINS



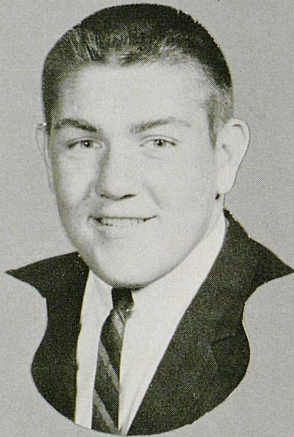
TONY MANZONELLI



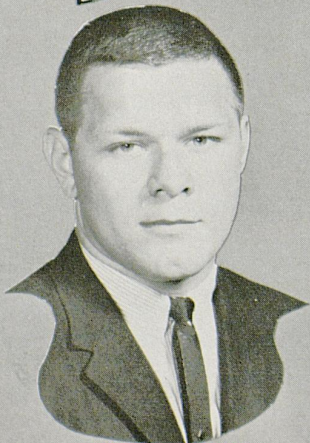
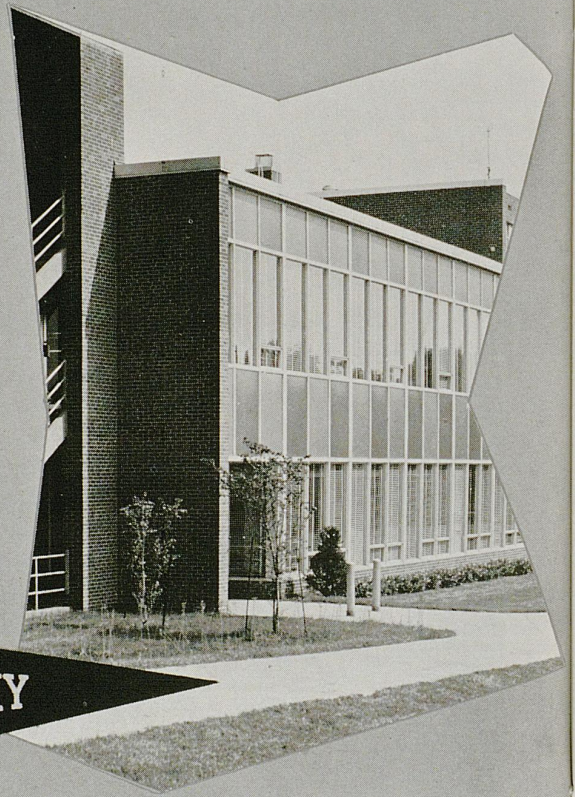
PERKY BRYANT



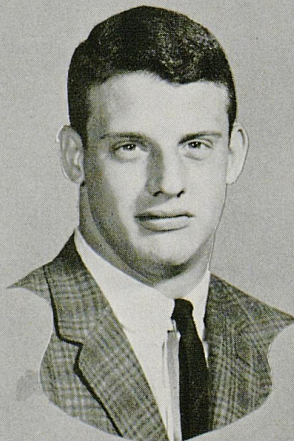
SAM BALL



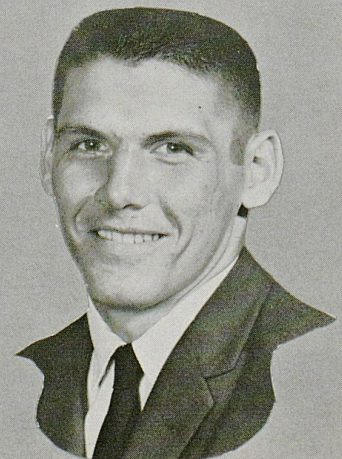
LLOYD CAUDILL



GERARD MURPHY



RICK KESTNER



BOB BROWN



**'H-A-S has the Best
in Sports
Every Season—
Every Year!**

WHAS 840 RADIO SPORTS



- **The entire U. of K. Football Schedule**
Co-sponsored by Your Friendly
Neighborhood FORD DEALER and EAST
KENTUCKY Rural Electric Co-operative.

- **"Football Warm-up"**
Ten minutes before game time, JERRY'S
RESTAURANTS present Cawood Ledford
with opponents' records, histories
and rivalries.



- **S.E.C. Football**
11 major Southeastern Conference games
co-sponsored by SINCLAIR OIL COMPANY.

- **Thoroughbred Racing**
The Feature Race of the day every day of
the spring and fall meetings at Keeneland
and Churchill Downs . . . including the
Kentucky Derby.



- **U. of K. Basketball**
Play-by-play of more than 70 college and
high school games, including N.C.A.A.
tournaments, the K.H.S.B.T. and every
U. of K. game.

- **All Year—Daily Sports Programs**
3:30 WHAS Sports
5:15 Kentuckiana Sports
6:40 ABC Sports
10:15 Report on Sports

U.K. FOOTBALL

Over WBLG

MARK HALLECK
WBLG's Sports Director

Play-by-Play of
All U.K. Games



BROADCASTS OF ALL U.K. GAMES PRESENTED BY



U.K. BASKETBALL

EXCLUSIVE! Hear COACH RUPP
from the playing floor following all games

The BEST in Central Kentucky

BEST Announcers • BEST Music • BEST Equipment • BEST Sports

the BLUE Grass station • dial 1300

WBLG

130 Barr St., Lexington, Kentucky 40507

UNIVERSITY OF DETROIT ROSTER

No.	Name	Pos.	Class	Age	Ht.	Wt.	Home Town
4	Myles Stepanovich	QB	Soph.	19	5-9	175	McKeesport, Pa.
6	Edward Condon	QB	Soph.	21	6-0	184	Dearborn, Mich.
7	Tom Zientek	QB	Soph.	20	6-2	173	Toledo, Ohio
12	Bill Madaya	QB	Soph.	19	6-0	180	West Mifflin, Pa.
14	Gary Vischer	HB	Sr.	20	6-0	171	Toledo, Ohio
15	Joe D'Angelo	HB	Jr.	20	5-8	165	Detroit, Mich.
16	Dennis Assenmacher	HB	Jr.	20	5-11	185	Monroe, Mich.
17	George Walkosky	HB	Sr.	21	6-0	190	Steubenville, Ohio
18	Mike Randall	HB	Soph.	19	6-0	192	Royal Oak, Mich.
20	Fred Murphy	HB	Soph.	20	5-9	180	Boston, Mass.
21	Jim Chorba	HB	Soph.	19	6-1	182	Oregon, Ohio
22	Bob Burghardt	HB	Soph.	19	6-0	192	Detroit, Mich.
23	Tom Law	HB	Soph.	19	5-11	175	Detroit, Mich.
24	Dan Wiggen	FB	Soph.	19	5-10	180	Wyandotte, Mich.
26	Dennis Kucharick	FB	Soph.	19	5-10	170	East Detroit, Mich.
29	Carl Dull	HB	Soph.	19	6-0	190	Rutherford, N. J.
30	Edward Drowniany	FB	Soph.	19	6-1	195	Dearborn, Mich.
31	Tom Siedlaczek	HB	Soph.	19	5-10	182	Detroit, Mich.
33	Fred Beier	FB	Jr.	20	5-9	203	Fremont, Ohio
34	Gary Wilkie	FB	Jr.	22	5-9	185	Warren, Mich.
50	Dennis Shaw	C	Sr.	21	6-2	235	Detroit, Mich.
52	Bill Stanforth	C	Soph.	19	6-0	215	Deer Park, Ohio
53	Paul Poljan	C	Jr.	19	6-0	187	Richmond, Mich.
54	Paul McLaughlin	C	Jr.	21	6-3	210	Lackawanna, N. Y.
60	Joseph Hilt	G	Jr.	20	5-10	222	Praire du Chien, Wis.
61	Edward Greeves	G	Sr.	21	6-0	206	Washington, D. C.
62	Dave Vitalli	G	Soph.	19	5-8	210	Detroit, Mich.
63	Jerry Dudley	G	Soph.	19	6-0	208	Hamilton, Ohio
64	Al Sabo	G	Soph.	19	5-10	211	McKeesport, Pa.
65	Bill Krantz	G	Soph.	19	5-8	195	Dover, Ohio
66	Rich Toriello	G	Soph.	19	5-10	210	Youngstown, Ohio
67	Bob Koval	G	Sr.	21	6-0	205	Detroit, Mich.
68	John Straka	G	Jr.	20	5-11	202	Greensburg, Pa.
69	Bob Lynch	G	Soph.	19	5-9	200	Chicago, Illinois
70	Bob Rice	T	Jr.	25	6-1	211	Benton Harbor, Mich.
71	Steve Mass	T	Soph.	20	6-4	255	Detroit, Mich.
72	Dan Kozlowski	T	Soph.	20	6-0	230	Detroit, Mich.
73	Ted Collins	T	Soph.	20	6-0	255	Windsor, Ont., Can.
74	Mike Walderzak	T	Sr.	21	6-2	222	Saginaw, Mich.
75	Larry Dressell	T	Soph.	19	6-3	220	Jackson, Mich.
76	Arnold Elzey	T	Soph.	19	6-4	235	Toledo, Ohio
78	Leo Rossi	T	Soph.	19	5-11	220	Detroit, Mich.
79	Steve Myers	T	Jr.	20	6-0	200	Marion, Ohio
80	Bob Caracciolo	E	Soph.	19	6-1	201	Mt. Clemens, Mich.
81	Bob Duniec	E	Jr.	20	5-11	190	Cleveland, Ohio
82	Jim Dinverno	E	Jr.	20	6-0	185	Detroit, Mich.
83	Lou Pace	E	Sr.	23	6-2	207	Buffalo, N. Y.
84	John Everly	E	Jr.	20	6-0	208	Royal Oak, Mich.
85	Richard Johnson	E	Sr.	21	6-1	213	Detroit, Mich.
86	Mickey Farkas	E	Soph.	19	6-1	185	Detroit, Mich.
87	Fred Lauck	E	Soph.	19	6-2	190	Detroit, Mich.
88	Jim Gillespie	E	Soph.	19	6-2	200	Mt. Clemens, Mich.
89	Richard Alge	E	Soph.	19	6-3	195	Fostoria, Ohio

Come see us in our new location in the

STUDENT CENTER

University Book Store

(Formerly Campus Book Store)

Many New Items Now In Stock

★ UK Glassware

★ UK Sweatshirts

★ UK Pennants

OPEN AFTER DAY GAMES UNTIL 6 P.M.

DeBoor

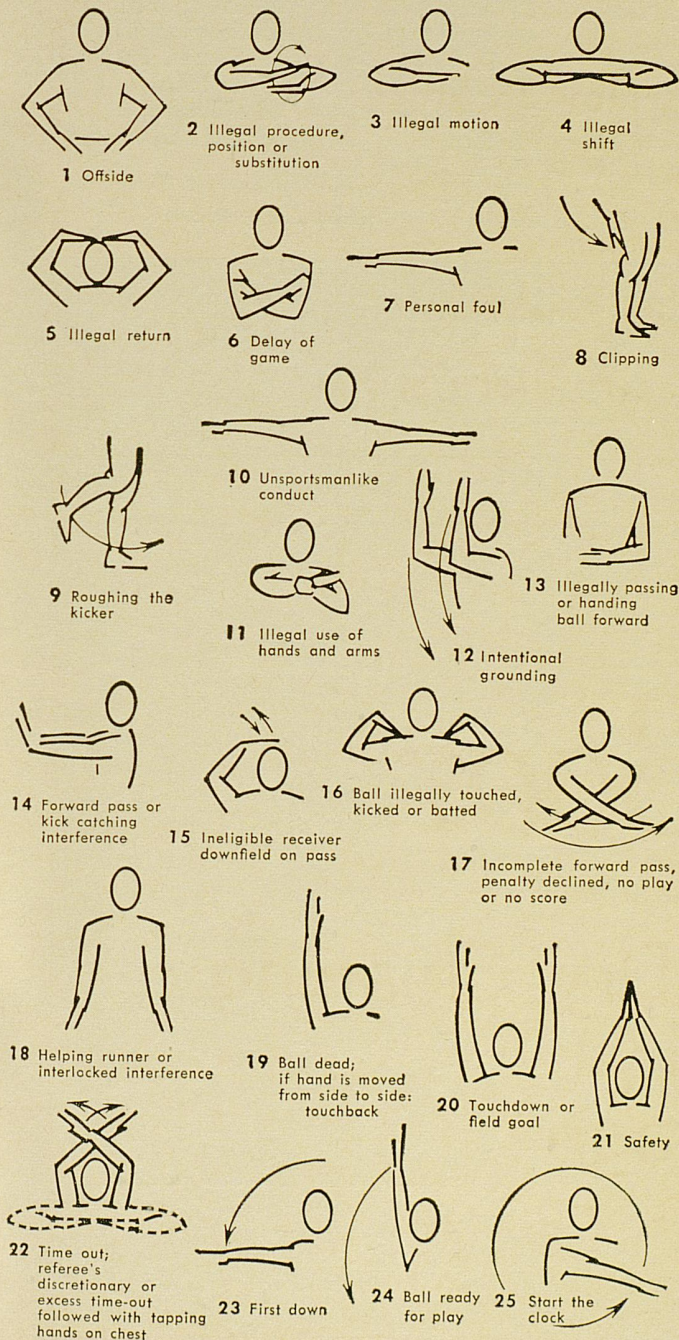
Laundry

Dry Cleaning

Storage

Pause for Coke

TRADE-MARK ®



COCA-COLA BOTTLING WORKS OF LEXINGTON, KENTUCKY

DETROIT

PROBABLE STARTING LINEUP

No.	Name	Position
84	JOHN EVERLY	LE
74	MIKE WALDERZAK	LT
62	DAVE VITALLI	LG
50	DENNIS SHAW	C
67	BOB KOVAL	RG
75	LARRY DRESSELL	RT
85	DICK JOHNSON	RE
7	TOM ZIENTEK	QB
31	TOM SIEDLACZEK	LH
16	D. ASSENMACHER	RH
33	FRED BEIER	FB

4	Stepanovich, QB
6	Condon, QB
7	Zientek, QB
12	Madaya, QB
14	Vischer, HB
15	D'Angelo, HB
16	Assenmacher, HB
17	Walkosky, HB
18	Randall, HB
20	Murphy, HB
21	Chorba, HB
22	Burghardt, HB
23	Law, HB
24	Wiggen, FB
26	Kucharick, FB
29	Dull, HB
30	Drewniany, FB
31	Siedlaczek, HB

THE TITAN SQUAD

33	Beier, FB	72	Kozlowski, T
34	Wilkie, FB	73	Collins, T
50	Shaw, C	74	Walderzak, T
52	Stanforth, C	75	Dressell, T
53	Poljan, C	76	Elzey, T
54	McLaughlin, C	78	Rossi, T
60	Hilt, G	79	Myers, T
61	Greeves, G	80	Caracciolo, E
62	Vitalli, G	81	Duniec, E
63	Dudley, G	82	Dinverno, E
64	Sabo, G	83	Pace, E
65	Krantz, G	84	Everly, E
66	Toriello, G	85	Johnson, E
67	Koval, G	86	Farkas, E
68	Straka, G	87	Lauck, E
69	Lynch, G	88	Gillespie, E
70	Rice, T	89	Alge, E
71	Mass, T		

OFFICIALS — Referee: Leonard Heinz

Umpire: T. A. Russell

Linesman: Stanley Machock

Viceroy's got

SMOKE ALL 7



Smoke all 7 filter brands and you'll agree: some taste as if they had no filter at all... others filter the fun and flavor out of smoking. But Viceroy tastes the way you'd like a filter cigarette to taste!

KENTUCKY

PROBABLE STARTING LINEUP

No.	Name	Position
80	RICK KESTNER	LE
74	RICH TUCCI	LT
64	JIM FOLEY	LG
53	CLYDE RICHARDSON	C
68	GERARD MURPHY	RG
70	HERSCHEL TURNER	RT
84	JOHN ANDRIGHETTI	RE
17	RICK NORTON	QB
21	RODGER BIRD	LH
25	BOB KOSID	RH
44	KEN BOCARD	FB

11	Becherer, QB
15	Todd, QB
16	Thompson, QB
17	Norton, QB
21	Bird, HB
22	Cox, HB
25	Kosid, HB
28	Pickett, HB
32	Ashworth, HB
33	McGraw, HB
42	Bolling, FB
43	Bryant, FB
44	Bocard, FB

THE WILDCAT SQUAD

51	Brockardt, C	72	Smith, T
53	Richardson, C	73	Ball, T
56	Miles, C	74	Tucci, T
61	Dunn, G	76	Caudill, T
62	Semary, G	77	Chapala, T
63	Keyes, G	78	Mullins, T
64	Foley, G	80	Kestner, E
65	Manzonelli, G	81	Jenkins, E
66	Brown, G	82	Cardwell, E
67	Schornick, G	83	Komara, E
68	Murphy, G	84	Andrighetti, E
70	Turner, T	85	Duncan, E
71	Davis, T	87	Stanko, E

OFFICIALS — Field Judge: Paul Sprayberry

Back Judge: Johnny Grace

ECO: Donald Orr

the taste that's right!

not too strong...not too light...

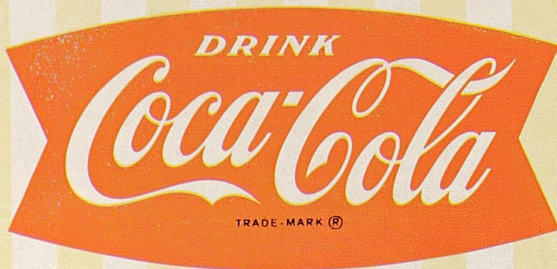
Viceroy's got—the
taste that's right!



© 1963. Brown & Williamson Tobacco Corporation

things go
better
with
Coke

TRADE-MARK ©



TRADE-MARK ©

1. OFFSIDE by either team; Violation of scrimmage or free kick formation; Encroachment on neutral zone — Loss of 5 Yards.
2. ILLEGAL PROCEDURE, POSITION OR SUBSTITUTION — Putting ball in play before Referee signals "Ready-for-Play"; Failure to complete substitution before play starts; Player out-of-bounds when scrimmage begins; Failure to maintain proper alignment of offensive team when ball is snapped; False start or simulating start of a play; Taking more than two steps after Fair Catch is made; Player on line receiving snap; Free kick out-of-bounds — Loss of Five Yards.

PENALTIES

3. ILLEGAL MOTION — Offensive player illegally in motion when ball is snapped—Loss of Five Yards.
4. ILLEGAL SHIFT — Failure to stop one full second following shift — Loss of Five Yards.
5. ILLEGAL RETURN of ineligible substitute — Loss of 15 Yards.
6. DELAY OF GAME—Consuming more than 25 seconds in putting the ball in play after it is declared ready-for-play; Interrupting the 25-second count for any reason other than a free or excess time out granted by Referee; Failure to remove injured player for whom excess time out was granted; Crawling —Loss of Five Yards. Team not ready to play at start of either half—Loss of 15 Yards.
7. PERSONAL FOUL—Tackling or blocking defensive player who has made Fair Catch; Piling on; Hurdling; Grasping face mask of opponent; Tackling player out of bounds, or running into player obviously out of play; Striking an opponent with fist, forearm, elbow or locked hands; Kicking or kneeling—Loss of 15 Yards.

8. CLIPPING—Loss of 15 Yards.
9. ROUGHING THE KICKER or holder—Loss of 15 Yards.
10. UNSPORTSMANLIKE CONDUCT—Violation of rules during intermission; Illegal return of suspended player; Coaching from side lines; Invalid signal for Fair Catch; Persons illegally on field — Loss of 15 Yards.
11. ILLEGAL USE OF HANDS AND ARMS by offensive or defensive player — Loss of 15 Yards.
12. INTENTIONAL GROUNDING of forward pass—Loss of Five Yards from spot of pass Plus Loss of Down.
13. ILLEGALLY PASSING OR HANDING BALL FORWARD — Loss of Five Yards from spot of foul Plus Loss of Down.
14. FORWARD PASS OR KICK CATCHING INTERFERENCE — Interference with opportunity of player of receiving team to catch a kick—Loss of 15 Yards. Interference by member of offensive team with defensive player making pass interception — Loss of 15 Yards Plus Loss of Down. Interference by defensive team on forward pass —Passing Team's Ball at Spot of Foul and First Down.
15. INELIGIBLE RECEIVER DOWNFIELD ON PASS — Loss of 15 Yards.
16. BALL ILLEGALLY TOUCHED, KICKED OR BATTED—Forward pass being touched by ineligible receiver beyond the line of scrimmage—Loss of 15 Yards from Spot of Preceding Down and Loss of a Down. Eligible pass receiver going out-of-bounds and later touching a forward pass—Loss of Down; Illegally kicking the ball —Loss of 15 Yards.
17. INCOMPLETE FORWARD PASS — Penalty declined; No play or no score.
18. HELPING THE RUNNER, or interlocked interference — Loss of 15 Yards.

COCA-COLA BOTTLING WORKS OF LEXINGTON, KENTUCKY

If You Like Fine Quality—If You Love Big Saving

YOU GET BOTH — DAY IN, DAY OUT AT

BEN SNYDER'S DEPT. STORE

OPEN A BEN SNYDER CHARGE ACCOUNT — PAY IN 10 MONTHS



Dixie Bell Dairy Company

"The Largest and Only Locally
Owned Dairy Serving
Central Kentucky"



315 North Limestone Street
LEXINGTON, KY.



Springs Motel

2020 South Broadway PHONE 277-5751 Lexington, Kentucky

ENJOY COCKTAILS IN THE RESTFUL
"NEPTUNE LOUNGE"

DINE IN THE ELEGANT SETTING OF
"THE POMPEI ROOM"

Entertainment nightly—9:00-1:00

Cocktail hour—4:00-6:00

UNIVERSITY OF KENTUCKY ROSTER

No.	Name	Pos.	Class	Age	Ht.	Wt.	Ltrs.	Home Town and High School	High School Coach
11	Tom Becherer	QB	Soph.	19	5-10	162	FN	Canton, Ohio (Central Catholic)	John McVay
15	Talbott Todd	QB	Soph.	19	6-1	190	FN	Richmond, Ky. (Madison)	Roy Kidd
16	Gordon Thompson	QB	Soph.	19	5-11	176	FN	Fern Creek, Ky. (Fern Creek)	Earl Browning
17	Rick Norton	QB	Soph.	19	6-1	187	FN	Louisville, Ky. (Flaget)	Paul Miller
21	Rodger Bird	HB	Soph.	20	5-11	184	FN	Corbin, Ky. (Corbin)	Carl Oakley
22	Darrell Cox	HB	Sr.	22	5-7	163	2	Miami, Fla. (Edison)	Haywood Fowle
25	Bob Kosid	HB	Sr.	21	5-10	187	1	Glenview, Ill. (Gleenbrook)	Walt Sherman
28	Phil Pickett	HB	Jr.	20	5-10	173	1	Huntsville, Ala. (Huntsville)	Jerry Lambert
32	Bob Ashworth	HB	Soph.	20	6-2	169	FN	Miami, Fla. (Edison)	Haywood Fowle
33	Mike McGraw	HB	Soph.	19	5-11	192	FN	Fort Thomas, Ky. (Highlands)	Homer Rice
42	Jim Bolling	FB	Soph.	19	5-11	187	FN	Big Stone Gap, Va. (Powell Valley)	Burchell Stallard
43	Perky Bryant	FB	Sr.	21	5-9	190	2	Evarts, Ky. (Evarts)	Charles Hunter
44	Ken Bocard	FB	Sr.	21	5-11	197	2	Ashland, Ky. (Ashland)	Rex Miller
51	Frank Brockardt	C	Soph.	19	6-3	193	FN	Wheeling, W. Va. (Triadelphia)	Dave Sayre
53	Clyde Richardson	C	Jr.	20	6-1	203	1	Frankfort, Ky. (MMI)	Gordon Betts
56	Jim Miles	C	Soph.	19	6-0	191	FN	Finley, Ky. (St. Joseph Prep)	Dick Blocker
61	Jack Dunn	G	Soph.	19	5-11	190	FN	Lexington, Ky. (Bryan Station)	Bob Cocconaugher
62	Vince Semaury	G	Sr.	23	5-10	190	1	Cleveland, Ohio (West Technical)	James Roberts
63	Howard Keyes	G	Soph.	19	5-10	196	FN	Altoona, Pa. (Altoona)	Earl Strohm
64	Jim Foley	G	Jr.	20	5-11	189	1	Lexington, Ky. (Lafayette)	Ray Walton
65	Tony Manzonelli	G	Soph.	18	6-0	216	FN	Pittsburgh, Pa. (South Hill Catholic)	Bernard Powers
66	Bob Brown	G	Jr.	20	5-11	189	1	Darlington, Pa. (Northwestern)	Homer Shadle
67	John Schornick	G	Soph.	19	6-0	202	FN	Ebensburg, Pa. (Central Cambria)	Ray Pelliccioni
68	Gerard Murphy	G	Soph.	18	5-11	193	FN	Latrobe, Pa. (Latrobe)	Charles Findley
70	Herschel Turner	T	Sr.	21	6-3	226	2	Alexandria, Ky. (Campbell Co.)	Jerry Reece
71	Doug Davis	T	Soph.	19	6-4	232	FN	Centerburg, Ohio (Centerburg)	Dick King
72	Ed Smith	T	Soph.	19	6-2	196	FN	Pineville, Ky. (Pineville)	William Adams
73	Sam Ball	T	Soph.	19	6-4	219	FN	Henderson, Ky. (Henderson Co.)	Mojo Hollowell
74	Rich Tucci	T	Soph.	18	6-1	229	FN	Youngwood, Pa. (Hempfield Area)	William Abraham
76	Lloyd Caudill	T	Soph.	18	6-0	215	FN	Hazard, Ky. (Hazard)	Paul Wright
77	Tom Chapala	T	Jr.	20	5-11	201	*	Ambridge, Pa. (Ambridge)	Mike Sebastian
78	Basil Mullins	T	Soph.	19	6-4	201	FN	Paintsville, Ky. (Paintsville)	Walter Brugh
80	Rick Kestner	E	Soph.	18	6-1	197	FN	Stone, Ky. (Belfry)	Al Yipperman
81	Bill Jenkins	E	Jr.	20	6-2	205	1	Elizabethtown, Ky. (Elizabethtown)	Bill Hagg
82	Denny Cardwell	E	Jr.	21	6-1	188	1	Louisville, Ky. (Trinity)	Charles Quire
83	Jim Komara	E	Jr.	21	6-0	180	1	Conneautville, Pa. (Conneaut Valley)	George Komara
84	John Andrighetti	E	Soph.	20	6-0	192	FN	Grapeville, Pa. (Hempfield Area)	William Abraham
85	Bob Duncan	E	Soph.	19	6-1	196	FN	Strongstown, Pa. (Penns Manor)	Pat Corrigan
87	Ed Stanko	E	Soph.	19	6-1	192	FN	McKeesport, Pa. (McKeesport)	Harold Weigle

* Transfer from Michigan

FN—Freshman Numeral



"OFFICIAL WATCH FOR THIS GAME — LONGINES — THE WORLD'S MOST HONORED WATCH"





Penny Edwards—"MISS TIPARILLO."

What does she mean "cigars...cigarettes...Tiparillos"?

You'll be hearing that chant more and more—now that Tiparillos have arrived. And arrived they have. In all the right places. With all the right people.

The new Tiparillo has a neat, trim shape. It looks young and debonair. And its pearly, pliable tip pays more than lip service to your smoking pleasure.

And never before such mildness! The most careful blending of choicest imported tobaccos has seen to that. So, too, has the exclusive, veinless Ultra Cigar Wrapper* that burns so evenly and smoothly it insures complete mildness.

You can even see the mildness. The

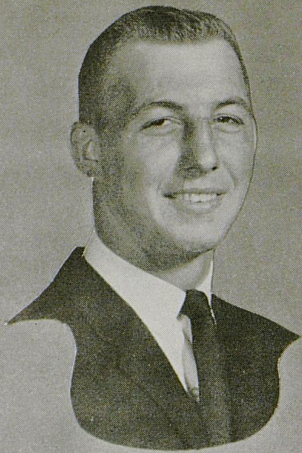
surprisingly whiter ash is visible evidence. Smoker's proof. Here is flavor you don't have to inhale to enjoy.

"Cigars...cigarettes...?" Who knows, maybe someday it will be just "Tiparillos!"

Why don't you ask for one today?

*T.M. GENERAL CIGAR CO.

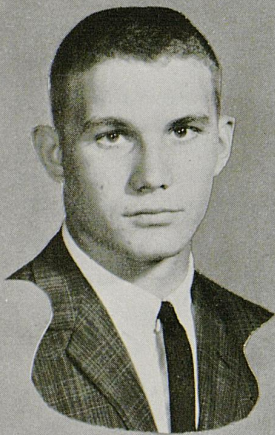
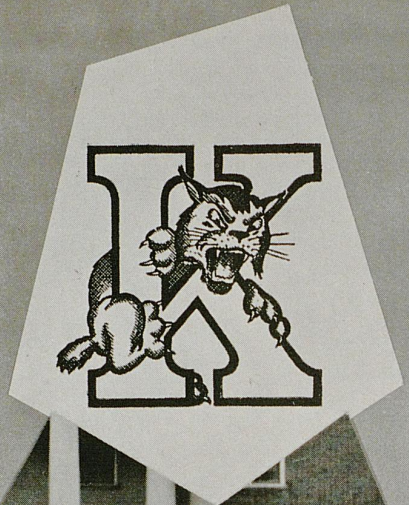
Tiparillos are on sale at this stadium.



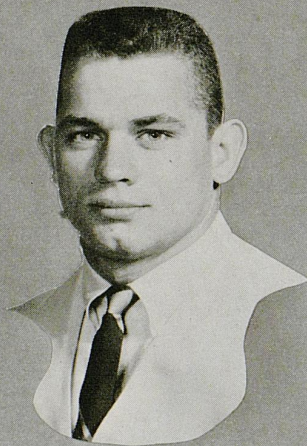
DENNY CARDWELL



ED STANKO



BASIL MULLINS



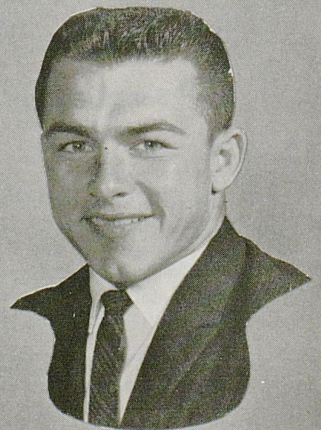
RODGER BIRD



GORDON THOMPSON



JACK DUNN



DARRELL COX

ENJOY THE GAME MORE!

Treat yourself to **m&m's** Candies



ON SALE AT THIS STADIUM NOW!

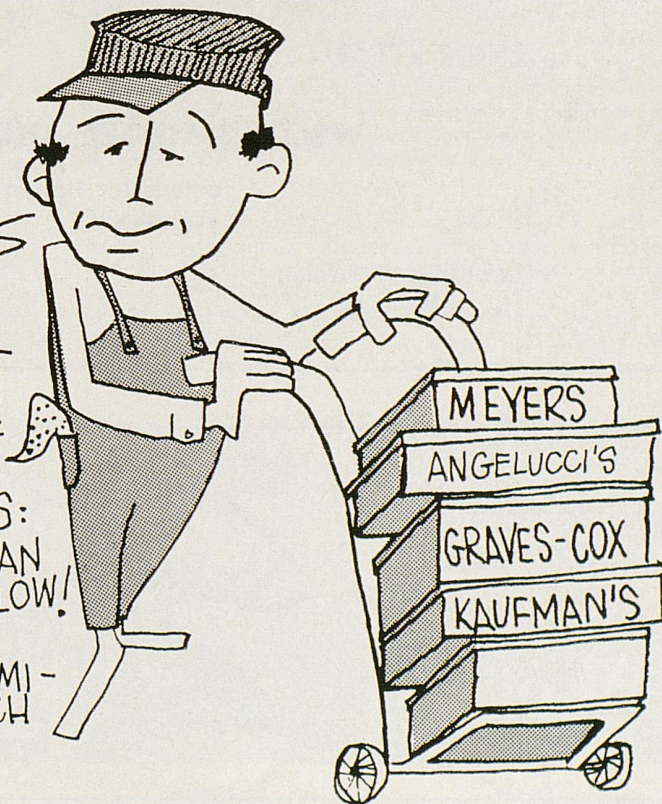
CONGRATULATIONS SIR!

DID YOU KNOW THAT YOU & THE MEN YOU SEE AROUND YOU ARE AMONG THE BEST DRESSED MEN IN THIS WHOLE U.S.A.?

IT'S A FACT! HERETOFORE, THOSE FAST HORSES & BEAUTIFUL WOMEN HAVE STOLEN THE SHOW, BUT MAYBE THEY ARE THE STRIKING PROOF OF WHAT OUR MANUFACTURERS TELL US:

THE BLUE GRASS GENTLEMAN IS A MOST DISCRIMINATING FELLOW!

AND WE FEEL HONORED TO HAVE DRESSED SO MANY DISCRIMINATING GENTLEMEN FOR SUCH A LONG WHILE.



Preview of Coming Attractions

KENTUCKY vs. GEORGIA (HOMECOMING)

Playing Two Weeks From Tonight On Stoll Field
(Next Week the Wildcats Will Be Meeting Louisiana State On the Road)

FACTS ABOUT THE BULLDOGS

Coach—John Griffith (Won 6, Lost 11, Tied 3)

1962 Record—Won 3, Lost 4, Tied 3 (Conference Finish—Tied 7th)

Last Year's Score—Georgia 7, Kentucky 7

Series—Bulldogs lead, 10-4-2

Chief Losses—RT Paul Holmes, LG Ken Vann, RG Wally Williamson, Punter Jake Saye, Def. HB Don Blackburn

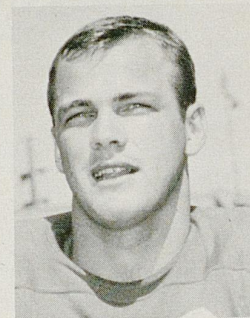
Top Returnees—QB Larry Rakestraw, RE Mickey Babb, RT Benny Boyd, LT Ray Rissmiller, LH Don Porterfield, FB Frank Lankewicz

Sophs to Watch—Preston Ridlehuber, QB; Marvin Hurst, FB; Ken Davis, C; Glenn Creech, RE

Outlook—Despite the fact that Georgia was a pre-season pick to finish tenth in the SEC, the Bulldogs still have one possible factor in their favor—the lack of dependence on sophomores. The Bulldogs have experienced depth, good running backs and, in the person of Larry Rakestraw, one of the best passers in the league. If the sophs develop, watch Georgia growl on Kentucky's Homecoming Day.



COACH JOHN GRIFFITH



QB LARRY RAKESTRAW

TICKETS for this Homecoming scrap between the Wildcats and the Bulldogs may be purchased at the UK Athletic Ticket Office in Memorial Coliseum or ordered by mail. Prices are \$5.00 for reserved stadium seats and \$3.50 for bleacher seats.

PHONE 277-5211

10 MOTEL UNITS

WELCH'S MOTEL AND RESTAURANT

Famous for Italian Spaghetti

Lawrence W. Welch
Owner-Manager

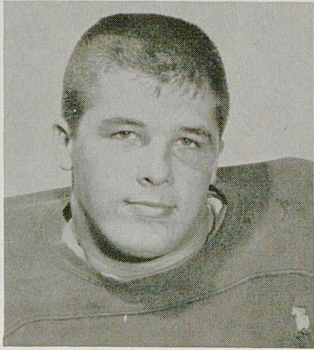
1915 Nicholasville Road
Lexington, Kentucky

Open
Mondays
and
Fridays
'Til 9

Stewart's

Phone or Write
Sally Stewart
Personal Shopper
252-2210

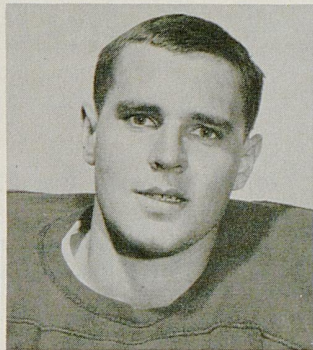
MEET THE "KITTENS"



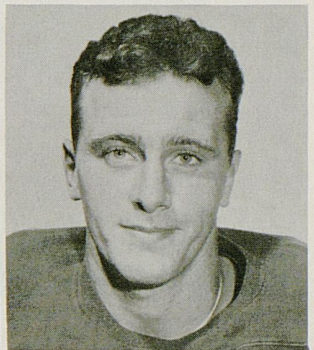
CONGLETON



DAVIS



DETWILER



FEE

CONLEY CONGLETON—Hailing from the same school (Madison High in Richmond, Ky.) as varsity quarterback Talbott Todd, Congleton has qualifications to go long way in UK's plans for the future . . . An All-State tackle, he stands 6-1 and weighs 222 pounds . . . In his junior year he played large part in his team's drive to 13-1 season . . . Congleton is an English major in the College of Arts and Sciences.

JERRY DAVIS—This speedy lad from Fairborn, Ohio, who has been clocked at 10.1 seconds in the 100, led his team in all offensive departments and was the top defensive halfback in his conference . . . Davis has lived in six states plus Japan, Finland, and Germany . . . His father is an officer in the Air Force . . . During his sophomore year in Germany, he guided Frankfurt High School to a league championship.

TOM DETWILER—One of many Keystone State standouts here at UK, Detwiler checks in at 6-2, 210 pounds . . . Played high school football at Phoenixville, Pa., and picked on Big 33 All-State Squad . . . Detwiler won praise from the UK coaching staff for his outstanding play as schoolboy linebacker and superb blocking ability on offense . . . He is enrolled in the College of Commerce.

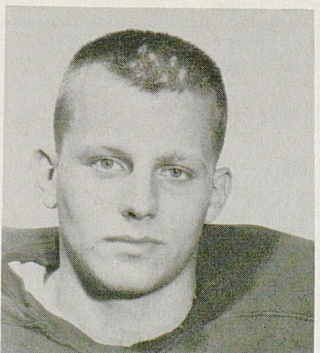
TOM FEE—Performing at end on offense and halfback on defense, Fee's heroics sparked his team to a 10-0 record and championship of the toughest high school league in Pennsylvania—Class AA, Western Pa. . . . He was a regular on Uniontown basketball team that won 37 straight and the state championship . . . Fee is currently enrolled in the College of Arts and Sciences and plans to major in chemistry.

JACK GILL—A 6-1, 205 pound tackle, who runs the 100-yard dash in 10.5 seconds, Gill led his high school (Mahany City) to a 9-0-1 season record his senior year . . . His quickness and aggressiveness as tackle, guard and end gained him Honorable Mention All-State . . . A Methodist by religion, he is majoring in Physical Education.

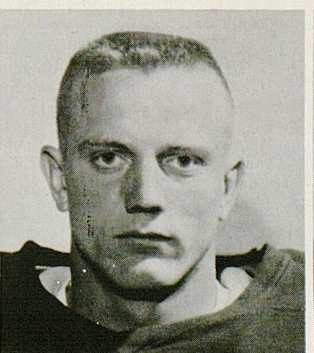
HOMER GOINS—An All-America Honorable Mention and an 11-letter winner at Evarts High School, this exceptional halfback figures prominently in UK's future plans . . . As a freshman last year, he was injured and was forced to drop out of school . . . This season he will play with the freshman team, and in the fall of '64 he will be eligible for varsity play.

TOM GRAHAM—After grabbing 22 passes for 388 yards and eight touchdowns, Graham was picked to Pennsylvania's All-Class AA team last season . . . He attended Hempfield Township High School, which produced two current Wildcat regulars, Rich Tucci and John Andrighetti . . . Graham won the praise of the UK coaches for his excellent pass receiving as well as hard-nosed defensive tactics.

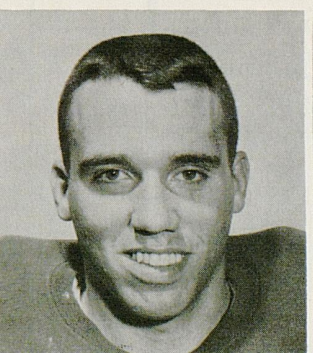
JIM GRIEST—Scoring 96 points and averaging 5.6 yards per carry during his senior year, this 6-1 and 220 pound fullback from Xenia, Ohio, was selected to All-Ohio team . . . Griest also operated as linebacker, gaining the praise of the UK coaches with his aggressiveness and hard-nosed tackling . . . In his senior year, he led Beaver Creek High School to the conference championship with a 9-1 record.



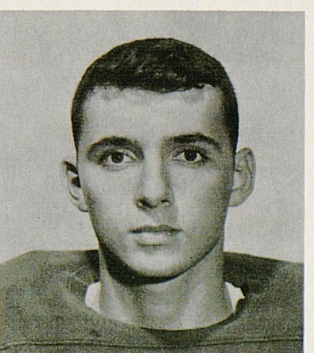
GILL



GOINS



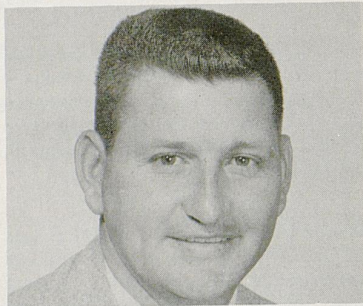
GRAHAM



GRIEST

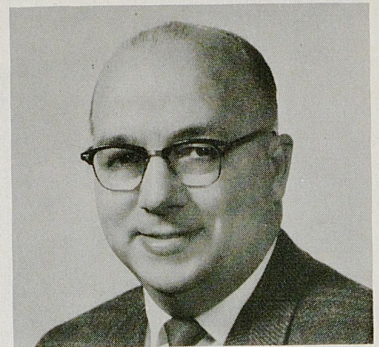


BUSTER BROWN
Equipment Manager



JOHN (RUSTY) PAYNE
Trainer

"Backing the Wildcats"



KEN KUHN
Publicity Director



HARVEY HODGES
Ticket Manager



Borden's
ICE CREAM
Now in
Central Kentucky

576 E. Third St. — Phone 254-2855

You're Always Welcome At . . .

Begley's

WALGREEN AGENCY DRUG STORES

IN LEXINGTON

- ★ 69 Eastland Shopping Center
- ★ 1198 North Limestone
- ★ 878 East High Street
- ★ 404 Southland Drive

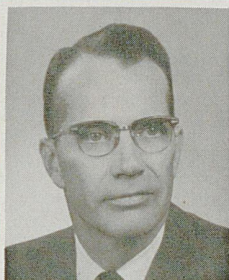
SERVING THE BEST
IN
DRUG STORE NEEDS
SINCE 1921

15 DRUG STORES IN KENTUCKY

Second National Bank & Trust Co.

123 Cheapside, Lexington, Ky.

REMEMBER: *Safety Is Our Inherent Way,
Saving Is Your Touchdown Play.*



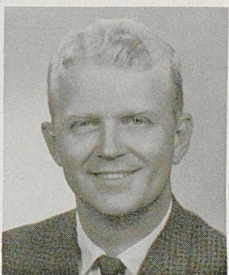
MILLER WELCH



CHARLES LEAR

CARPENTER-WARREN INSURANCE AGENCY Since 1927

137 N. Upper St. PHONE 2-4155 Lexington, Ky.



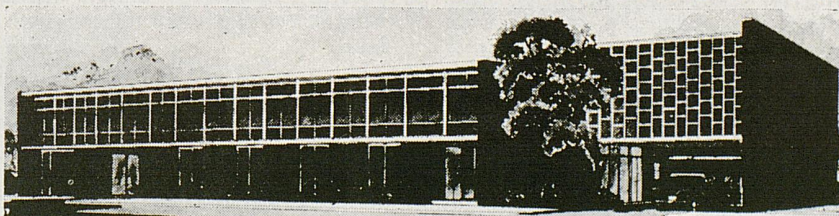
DONALD ROSE

ALL FORMS
OF INSURANCE



SINCE 1923

The Downtowner Motor Hotel



LEXINGTON'S FINEST — 155 ROOMS — RESTAURANT — COCKTAIL LOUNGE — CONFERENCE ROOMS
PARK AT YOUR FRONT DOOR — TV — HI-FI — RADIO — PHONES — SWIMMING POOL

347 EAST MAIN — JUST EAST OF ROSE

The NCAA



by ROBERT F. RAY, Dean, Division of Extension
and University Services, State University of Iowa
President of the National Collegiate Athletic
Association



All across the nation today more than a million college football fans are enjoying watching their favorite teams in action, yet few realize that less than 60 years ago football faced a serious crisis.

It was the flying wedge, football's major offense in 1905, that spurred the formation of the National Collegiate Athletic Association. The rugged nature of football, typified by the mass formation and gang tackling, was causing too many injuries and deaths. Many institutions discontinued the sport. Others advocated that it be abolished from the intercollegiate program.

Public clamor rose to such crescendo that President Theodore Roosevelt summoned athletic leaders to two White House conferences to urge reformation of the game and warned an executive edict might be forthcoming if his request passed unheeded.

The NCAA evolved from a meeting of 13 colleges and universities called in early December, 1905, to bring about reforms in the playing rules. At a second December 28 meeting in New York, the Intercollegiate Athletic Association was founded and officially constituted March 31, 1906. The NCAA took its present name in 1910.

In his address to the first annual convention, December 28, 1907, of the Intercollegiate Athletic Association, its president, Palmer Pierce, United States Military Academy, stated:

"The purpose of this Association is, as set forth in its Constitution, the regulation and supervision of college athletics throughout the United States, in order that the athletic activities in the colleges and universities may be maintained on an ethical plane in keeping with the dignity and the high purpose of education. All institutions enrolled as members agree to take control of student athletic sport, so far as may be necessary, to maintain in them a high standard of personal honor, eligibility and fair play, and to remedy whatever abuses may exist."

Fifty-six years later, with programs of intercollegiate athletics vastly different from those in effect in 1907, the philosophy expressed by General Pierce remains the basic philosophy of the NCAA. The advances and progress which the Association has made during the 56 years of its existence can be attributed largely to the fact that its ever growing membership and its leadership have not lost sight of these principles.

From a modest beginning when representatives of 13 institutions came together in December of 1905, the NCAA of 1963 has a total membership of 607, including 542 colleges and universities, 32 allied conferences, 13 associated in-

stitutions, and 20 affiliated organizations.

The NCAA on occasion has been incorrectly referred to as an organization of large colleges and universities. While every college and university conducting a major athletic program does hold membership in the NCAA, there are nearly 375 College Division members, i.e., smaller institutions.

The fact that NCAA membership is important to these smaller institutions is confirmed by the enrollment figures which show that the NCAA College Division has more than tripled—from 111 to nearly 375, in the last 10 years.

The final authority and governing body of the Association is the annual Convention held during the first part of January. The establishment and direction of the general policy of the Association between Conventions are committed to a Council of 18 members. An Executive Committee of 10 members is elected by the Council to transact the business and administer the affairs of the Association and carry out the policies of the Convention and Council. Members of the Council and Executive Committee are some of the nation's leading college professors, presidents, and college athletics officials.

The core of the Association is the work of its committees which determine policy by channeling reports and recommendations through the Council to the annual Convention. The Association maintains 13 standing or general committees, 13 rules committees, six meet and tournament committees, and a number of special committees appointed to undertake assigned projects.

In summarizing the NCAA, it is an organization through which the colleges and universities of the nation speak of and act on athletic matters at a national level. The NCAA stands for good conduct in intercollegiate athletics and serves as the colleges' national athletic accrediting agency. It is a voluntary association of 607 member institutions and affiliated associations devoted to the sound administration of intercollegiate athletics in all of its phases.

R

"No Order Too Small"

R

Sageser Drugs

R

"Ask Your Doctor"

R

A sure winner for convenient banking

Lexington's Only Downtown

Drive-In Banking Windows

FREE PARKING



DRIVE-IN OPEN FROM 7:30 TIL 6:00 DAILY TIL NOON ON SATURDAY

Central

BANK & TRUST CO.

SHORT AND UPPER STREETS LEXINGTON, KENTUCKY



YOU Should be wearing

*French
Shruiner*

MEN'S
Extra Quality
SHOES

Standouts for Comfort and Style

BAYNHAM'S

"Men's Shoes of Distinction" . . . 135 East Main Street



WHAT KENTUCKY OPPONENTS ARE DOING

VIRGINIA TECH (2-1)	MISSISSIPPI (2-0-1)	AUBURN (3-0)	DETROIT (1-2)	LOUISIANA ST. (2-1)
14 Kentucky (A) 33	0 Memphis State (A) 0	21 Houston (A) 14	14 Bowling Green (A) 27	14 Texas A&M (H) 6
27 Wake Forest (A) 0	31 Kentucky (A) 7	23 Tennessee (A) 19	20 N. Michigan (H) 7	12 Rice (A) 21
10 Virginia (N) 0	20 Houston (A) 6	14 Kentucky (H) 13	12 Boston Col. (H) 20	7 Ga. Tech (H) 6
10/11 Geo. Wash. (A)	10/19 Tulane (A)	10/12 Chattanooga (H)	10/12 Kentucky (A)	10/12 Miami (A)
10/19 Wm. & Mary (H)	10/26 Vanderbilt (H)	10/19 Ga. Tech (A)	10/19 Cincinnati (A)	10/19 Kentucky (H)
10/26 Fla. State (A)	11/2 L.S.U. (A)	11/2 Florida (H)	10/26 Dayton (A)	10/26 Florida (A)
11/2 Richmond (A)	11/9 Tampa (H)	11/9 Miss. State (N)	11/2 Houston (A)	11/2 Mississippi (H)
11/9 N. C. State (A)	11/16 Tennessee (N)	11/16 Georgia (A)	11/8 Villanova (H)	11/9 T. C. U. (H)
11/16 W. Virginia (A)	11/30 Miss. State (A)	11/23 F.S.U. (H)	11/15 Xavier (H)	11/16 Miss. State (N)
11/28 VMI (N)		11/30 Alabama (N)	11/23 Toledo (A)	11/23 Tulane (H)

GEORGIA (2-1)	MIAMI (2-1)	VANDERBILT (0-3)	BAYLOR (1-1)	TENNESSEE (1-2)
7 Alabama (H) 32	0 Florida State (H) 24	13 Furman (H) 14	27 Houston (H) 0	34 Richmond (H) 6
20 Vanderbilt (H) 0	3 Purdue (H) 0	0 Georgia (A) 20	15 Oregon St. (A) 22	19 Auburn (H) 23
27 S. Carolina (H) 7	10 Tulane (A) 0	6 Alabama (H) 21	10/12 Arkansas (H)	0 Miss. State (H) 7
10/12 Clemson (A)	10/11 L.S.U. (H)	10/19 Florida (H)	10/19 Texas Tech (A)	10/12 Ga. Tech (H)
10/19 Miami (A)	10/18 Georgia (H)	10/26 Mississippi (A)	10/26 Texas A&M (A)	10/19 Alabama (N)
10/26 Kentucky (A)	11/2 Kentucky (A)	11/2 Boston Col. (A)	11/2 Tex. Chris. (H)	10/26 Chattanooga (H)
11/2 No. Carolina (A)	11/16 N. Carolina (A)	11/9 Kentucky (H)	11/9 Texas (A)	11/9 Tulane (A)
11/9 Florida (N)	11/23 Florida (H)	11/16 Tulane (A)	11/16 Kentucky (H)	11/16 Mississippi (N)
11/16 Auburn (H)	11/30 Pittsburgh (H)	11/23 Geo. Wash. (H)	11/23 S.M.U. (H)	11/23 Kentucky (A)
11/30 Ga. Tech (A)	12/7 Alabama (H)	11/30 Tennessee (A)	11/30 Rice (A)	11/30 Vanderbilt (H)

Welcome To

THE KENTUCKIAN MOTOR HOTEL

(Downtown — But Within Walking
Distance of U of K)

100% Air Conditioned
TV & Radio In All Rooms
Free — Lighted Parking Deck

Our Ever Popular LEXINGTON ROOM
For Dining
MINT JULEP ROOM for Cocktails

East High and Viaduct
Phone 255-5199

1963 FRESHMAN SCHEDULE

Date	Opponent	Site
Oct. 12	Vanderbilt Frosh	Away
Oct. 28	Cincinnati Frosh	Away
Nov. 4	Xavier Frosh	Home
Nov. 11	Tennessee Frosh	Home

1962 RESULTS

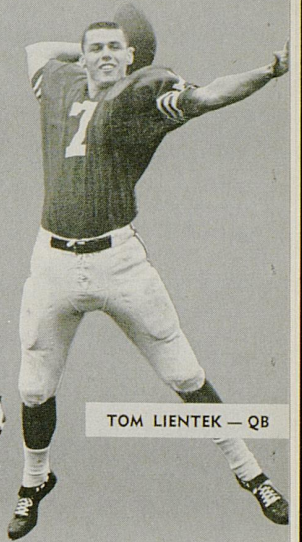
Won 2, Lost 0, Tied 1 — .833

42	Vanderbilt Frosh (H)	28
37	Cincinnati Frosh (H)	20
10	Tennessee Frosh (A)	10
<hr style="width: 20%; margin-left: 0;"/>		<hr style="width: 20%; margin-left: 0;"/>
89		58

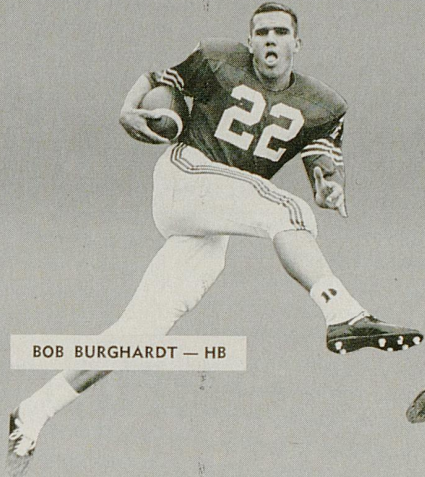
TITANS



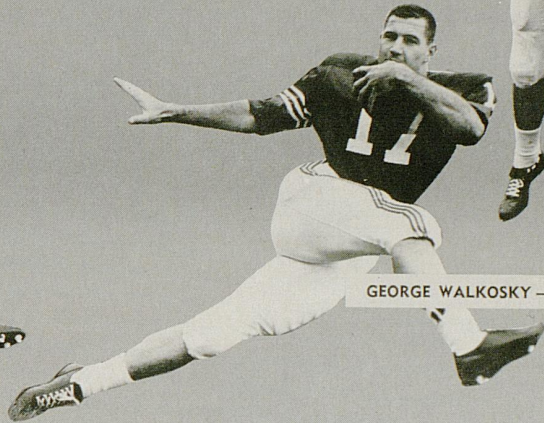
DICK JOHNSON — E



TOM LIENTEK — QB



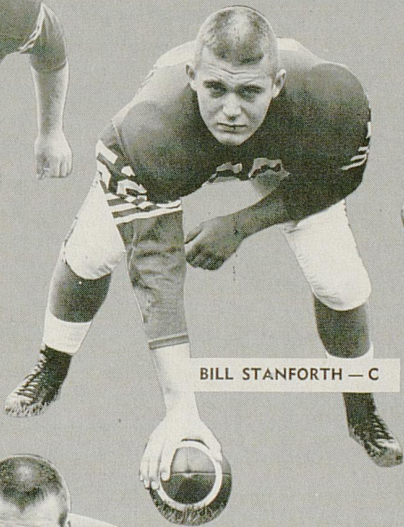
BOB BURGHARDT — HB



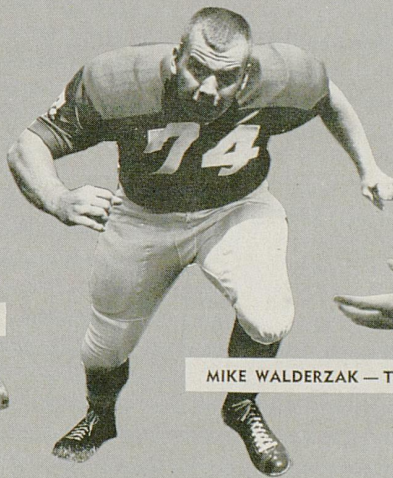
GEORGE WALKOSKY — HB



STEVE MASS — T



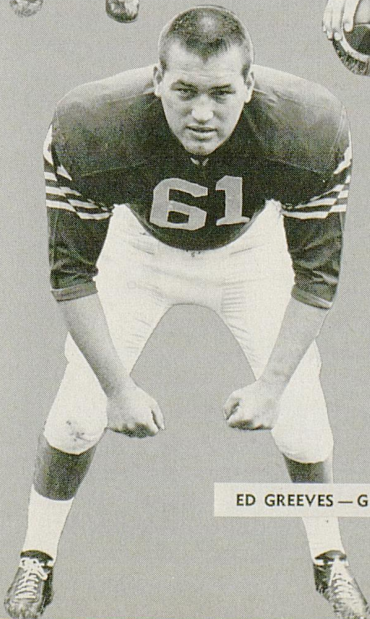
BILL STANFORTH — C



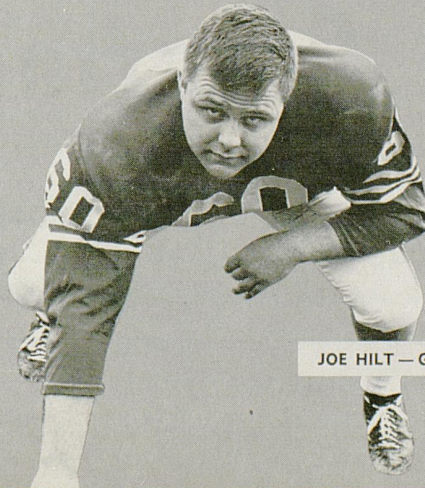
MIKE WALDERZAK — T



FRED LAUCK — E



ED GREEVES — G



JOE HILT — G



FRED BEIER — FB

HOWARD JOHNSON'S
Motor Lodge



Nicholasville Road, U.S. 27, 2 Mi. So. of
Downtown

Phone 277-1191, Lexington, Kentucky

LANDMARK FOR SLEEPY AMERICANS

Flying Somewhere?

Contact . . .

All-American Tours Inc.

(Lexington's oldest and largest travel agency)

Phoenix Hotel — Telephone 255-6780

. . . Where you get information on ALL
airlines by one call or visit. There is no
service charge.

— ALSO —

We have an attractive program of tours
and cruises to all parts of the world.

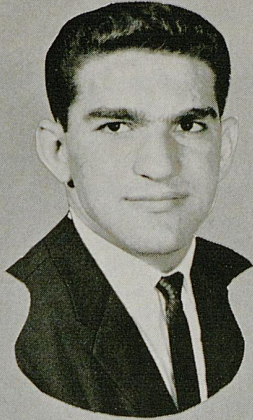
Kennedy
Book
Store

U.K. Shirts — Pennants — Decals
Textbooks — School Supplies

Turf Catering Co.

"SERVING STOLL FIELD AND MEMORIAL COLISEUM"

DELICIOUS HOT DOGS — COLD DRINKS — POPCORN
PEANUTS — CIGARETTES — CANDY
YOUR PATRONAGE KINDLY SOLICITED



VINCE SEMARY



BOB DUNCAN



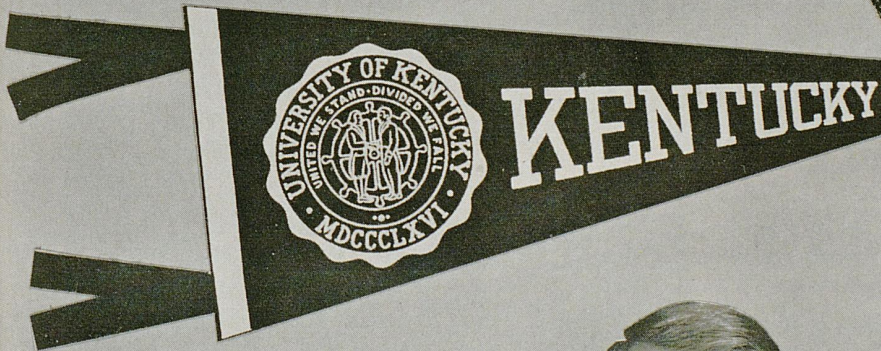
DOUG DAVIS



ED SMITH



FRANK BROCKARDT



RICH TUCCI



MIKE MCGRAW



JOHN SCHORNICK

— Boosting the Wildcats to Success —

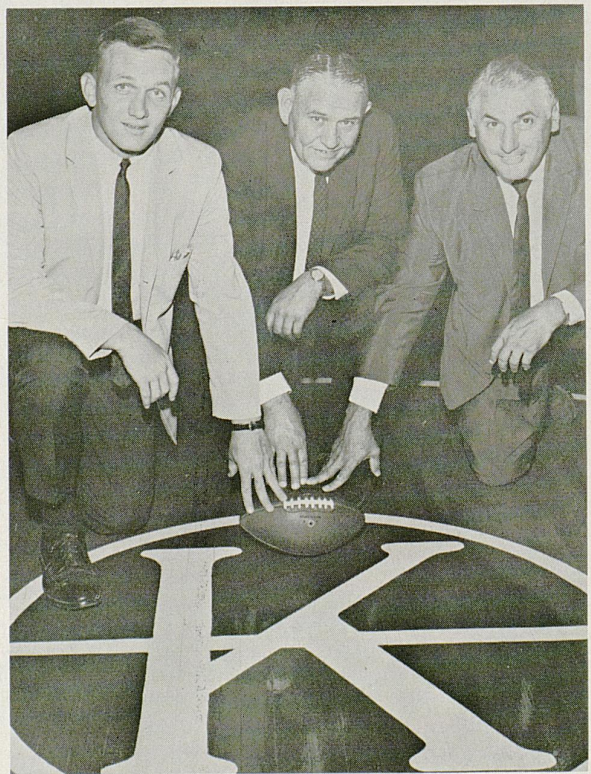
That old axiom which suggests an army travels on its stomach never had a more appropriate twist than it gets in the modern day world of sports.

Equally popular as a truism is the statement that declares successful athletic teams are "boosted" to the top—a reference to the all-important help within the strict bounds of official rules given by various interested organizations such as the ones represented by the photographs.

University of Kentucky athletic officials—Director of Athletics Bernie Shively and members of the coaching staffs—as well as the young men who are either team members or prospective Wildcats sincerely appreciate the public-spirited assistance given in particular by the Lexington Quarterback Club, UK Committee of the Chamber of Commerce, K-Men's Association and the Lexington Salesmen's Club.

The makeup of these groups includes businessmen and private citizens of the University community who voluntarily donate of their valuable time and effort on a year-around basis to promote and handle other non-coaching assignments ranging from the actual selling of tickets to making the high-type athletes feel that they have a home away from home while playing for the Wildcats.

K MEN'S ASSOCIATION—Newest of the organizations giving active support to the Wildcat cause is this club composed of former Kentucky athletes in all sports who were awarded at least one varsity "K" letter during their careers at the University. Directing the activities of the combined K Men's Association are Frank Seale (center), president and former football letterman; Dick Rushing (left), secretary and also an ex-footballer; and Carl (Hoot) Combs, treasurer who participated in both football and basketball as a Wildcat.





LEXINGTON QUARTERBACK CLUB—President Jim Barlow and Vice-President Luther Chappel (center) execute a handoff play symbolizing the team work of officers and directors of one of the most helpful organizations in the country. Surrounding the pair are Secretary-Treasurer Gene Marlowe (behind Barlow) and directors (left to right) Ed Williams, Fred Staples, L. C. Redmon, Logan Shearer, Henry Newman, Frank Seale, L. W. Haley, Athletic Coordinator Bill Faulkner, Taylor Hudson, Kermit Little, Bob Stephens and Bob Sparks.

UK COMMITTEE, CHAMBER OF COMMERCE—Heading up this vitally interested group of civic leaders is Kentucky's nominee for "Man of the Year," untiring Bill Faulkner (seated fourth from left). Other members of the committee which greets and sends off the Wildcats and visiting teams as well as performing other functions are (seated left to right) John Jones, Mrs. Hampton Adams, Logan Gray, Chester Hager, Ed Williams, Mrs. Joe Morris, Luther Chappel, Bob Sparks, Miss Helen King; (standing) UK Athletic Director Bernie Shively, Bill Carl, Dick Rushing, Bob Lutes, Bill Bond, C. H. Smith, Charley Taylor, Barry Morris, Frank Dawahare, Russell Lutes, Joe Nash, Henry Hettle, Howard Orme, Robert Milward, Sam Huey, Taylor Hudson and Rev. Don Herrin.



SALESMEN'S CLUB—One of the long-time supporters of the University of Kentucky athletic program is the Lexington Salesmen's Club, represented by the group picture. Current officers of the organization, which assists annually in the sale of season football tickets, are W. Barry Foster, president; Ed Williams, first vice-president; Thurmon Measel, second vice-president; Delmar Penny, secretary; D. S. Hollman, treasurer; and Charley Thompson, sergeant-at-arms.

SOUTHLAND SPORT SHOP

Distributors of

Riddell, Spanjian, Hyde, Rawlings, Wilson, and Spalding Sporting Goods
Adidas Track Shoes *Cramer Products*

Plenty of Free Parking Space

Gene Stokley — In The Southland Shopping Center — Dick Wallace
P.O. BOX 8251 PHONE 277-3977

Hargett Construction Co.

INCORPORATED

General Contractors

Phone 252-2992

998 New Circle Rd., N.E. Lexington, Ky.



Two Locations To Serve You Better

MARLOWE TIRE CO., INC.

851 North Broadway
Phone 252-1786

**MARLOWE SOUTHLAND
SERVICE**

403 Southland Drive
Phone 277-5892

SINCLAIR OIL PRODUCTS

BECKER

LAUNDERERS CLEANERS

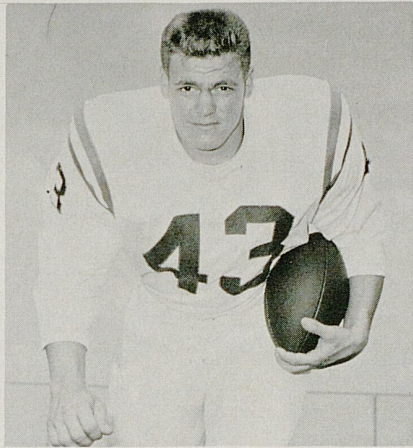
5 Convenient Locations

Our Newest Location—Southland Shopping Center—Next to Sageser Drug

NOBODY can Launder a Shirt like BECKER

FROM THE UK GRIDIRON PAST . . .

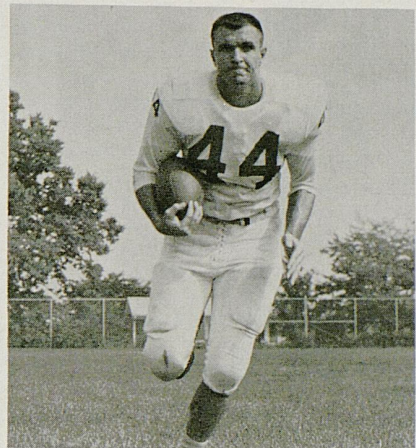
Outstanding Games With Tonight's Opponent



BRYANT



HAWTHORNE



SHAW

1962—KENTUCKY 27, DETROIT 8

Scoring the first two times it got possession of the pigskin, Kentucky's renowned "Thin Thirty" rolled with ease over out-classed Detroit, 27 to 8, in a Motor City classic last year that gave the Wildcats their first win of the season and new tutor **Charlie Bradshaw** his initial success as a head mentor.

What had been billed as an aerial duel between the nation's leading passer, Jerry Gross of Detroit, and Kentucky ace **Jerry Woolum** failed to develop but there were plenty of offensive fireworks just the same. Woolum skipped the game to rest up from an injury and Gross' effectiveness was harnessed by an effective UK defense.

Behind the substitute generalship of **Elmer Jackson**, the invading 'Cats put the pressure on almost immediately as fullback **Perky Bryant** scooted across for the first of three touchdowns he was to score. Brilliant defensive play by safetyman **Darrell Cox** and defensive specialist **Bob Kosid** contributed greatly.

Also getting tremendous help from all-SEC tackle **Junior Hawthorne** in keeping the Titans in check, Kentucky scored again in the waning minutes of the initial period as Jackson found end **Dave Gash** open.

After Detroit had accomplished its scoring of the evening on a pass from Gross to end Gary Banks and a change-up pitchout for a two-point conversion, UK picked up momentum again with Bryant scampering 47 yards to pay dirt on a crucial third and three situation.

The marker seemingly took the fight out of the Titans who had gotten back in the game minutes before when they narrowed the count to 14-8.

In the final frame, Coach Bradshaw's men clinched the decision when **Ken Bocard** intercepted a Gross pass to set machinery in motion for a final Kentucky touchdown. Jackson hit All-SEC end **Tom Hutchinson** for a gain to the five. Two plays later, Bryant had his third touchdown of the night and **Tommy Simpson** again converted to stretch the final count to 27-8.

The win avoided the tag of being one of the losingest outfits in UK grid history. Only one other Wildcat grid team had failed to chalk up its first win of the season by the fourth week.

1959—KENTUCKY 32, DETROIT 7

In the opening game of the Kentucky-Detroit grid rivalry played at Detroit just four years back, the Wildcats got relations off to a resounding start by notching a 32 to 7 success with the aid of a not-to-be-denied ground offensive.

The second time UK got possession of the pigskin **Charlie Sturgeon** slammed over from four yards out to climax a 67-yard drive.

After moving 50 yards in 10 plays in the closing stage of the opening stanza, **Leeman Bennett** plowed out four yards for Kentucky's second score on the opening play of the second quarter.

Capitalizing on a punt exchange break midway of the third period, the visiting Cats moved in from Detroit's 32 in six plays with **Calvin Bird** scooting over from the one-foot line. Fullback **Gary Cochran** became the fourth Wildcat to score as he tallied on a 30-yard jaunt opening activities in the final quarter and minutes later the contest was completely on ice as Bennett, finding his receivers covered, ran six yards for the final UK score.

Detroit star Bruce Maher sprinted 51 yards in the closing minutes for the lone Titan tally.

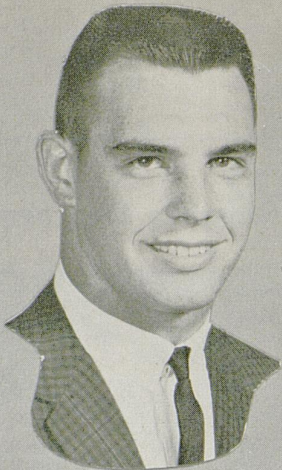
UK halfback **Glenn Shaw** took ground gaining honors with 67 yards on 14 carries.



Through the 72 years of Kentucky football history, this fourth-week stage of each campaign has proven to be something of a "make or break" situation for the Wildcats. Several notable victories are on the record book but in modern times the Big Blue has come out on the short end of the score all too often.

Among the more outstanding encounters this week in history were a stunning, 25-0 win over Georgia in the Orange Bowl year of 1949, an 81-3 clobbering of hapless Earlham in 1914, and a 17-0 decisioning of Tennessee in 1909.

Several other interesting battles, some won and some lost, are recorded with a variety of foes including such schools as Georgia Tech, LSU, Vanderbilt, Virginia Tech, Virginia, Florida, Sewanee and Centre College. And one season (1918) a game scheduled with Centre had to be cancelled due to a flu epidemic in Lexington.



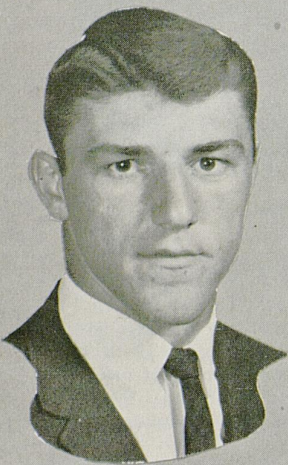
CLYDE RICHARDSON



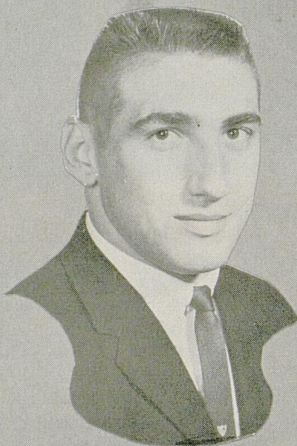
TALBOTT TODD



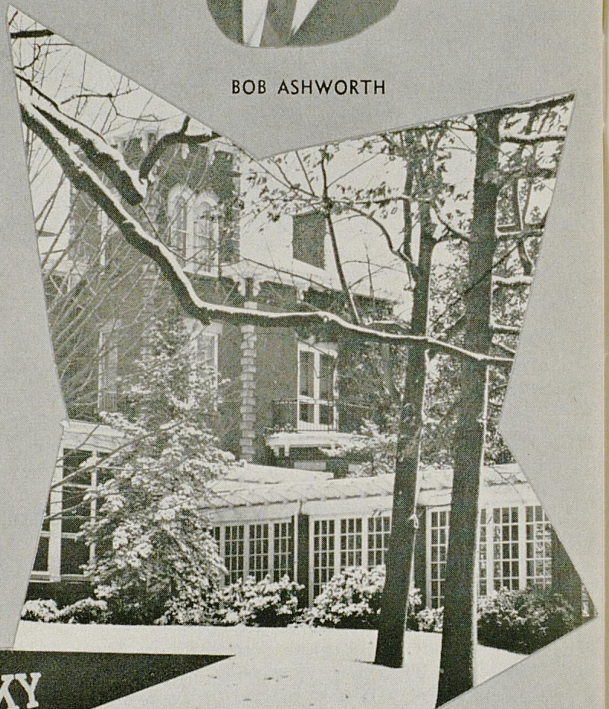
BOB ASHWORTH



JIM KOMARA



JOHN ANDRIGHETTI



KENTUCKY



JIM FOLEY



JIM BOLLING



BOB KOSID

Lexington Yellow Cab Co.

Inc.

**ALL
RADIO CABS**

Dial 252-2230

**ALL
RADIO CABS**

"IRRESISTIBLE" Your Home in Modern, Provincial

or Early American, by . . .



ROBERTS
Furniture Company

Established
1893

• Open Monday Night
to 9 . . . for Your
Shopping Pleasure!

425 W. MAIN • FREE PARKING AT SIDE DOOR

We at HUNT'S are pleased to supply to the University of Kentucky Athletics Association merchandise manufactured by the following firms:

Bike Web Company—Trainers Supplies

Converse Rubber Company—Basketball Shoes

Cramer Chemical Company—Trainers Supplies

Fair Play Scoreboard Company—Football Scoreboard and Basketball Scoreboard

Hillerich and Bradsby Company—Louisville Slugger Bats

Johnson and Johnson—Trainer's Tape

King O'Shea Company—Basketball Uniforms

MacGregor Company—Football Uniforms and Equipment for Football and Baseball

Pennsylvania Rubber Company—Tennis Balls

Powers Mfg. Company—Award Jackets

John T. Riddell, Inc.—Football Helmets and Shoes

A. G. Spalding & Bros.—Football and Basketballs

Spanjian of Pasadena—Football and Baseball Uniforms

We are grateful to the above manufacturers who sponsor this ad.

HUNT'S ATHLETIC GOODS CO., INC.

"We Ship The Day You Buy"

MAYFIELD, KENTUCKY

Kentucky Life Museum

Is A 'Sight-Seeing Must'

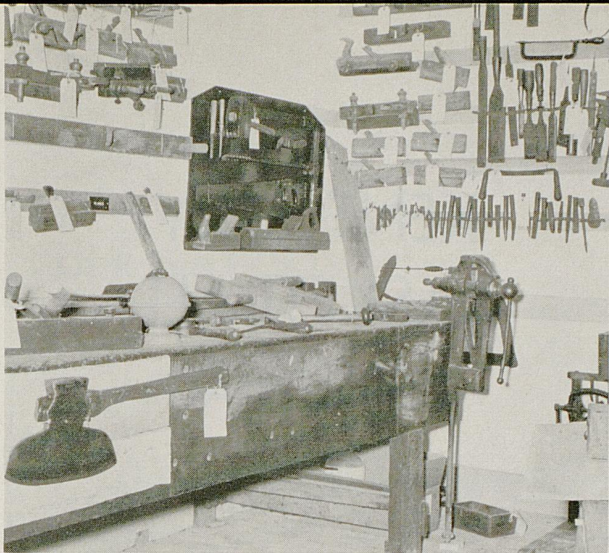
Waveland, officially known as the Kentucky Life Museum, is located three miles from the campus on the Higbee Mill Road, just off U.S. 27. The mansion is a magnificent white columned Greek Revival edifice, built by Joseph Bryan Sr., in 1847. Bryan's grandmother was a sister of Daniel Boone.

The museum, open to the public for a token fee Tuesday through Sunday, is on a 200-acre farm operated by UK, and also includes the Old

Slave Quarters which houses a printing shop, harness shop, kitchen and sewing room, all containing implements used in early Kentucky. Items for the museum were collected by its director, Dr. Hambleton Tapp, from throughout the state. One of the attention-drawing areas in the mansion is the Military Relics Room, filled with relics from Kentucky Civil War battlefields. A case containing the duelling pistols of Cassius Marcellus Clay is displayed in this room.

Mansion of Kentucky Life Museum at Waveland





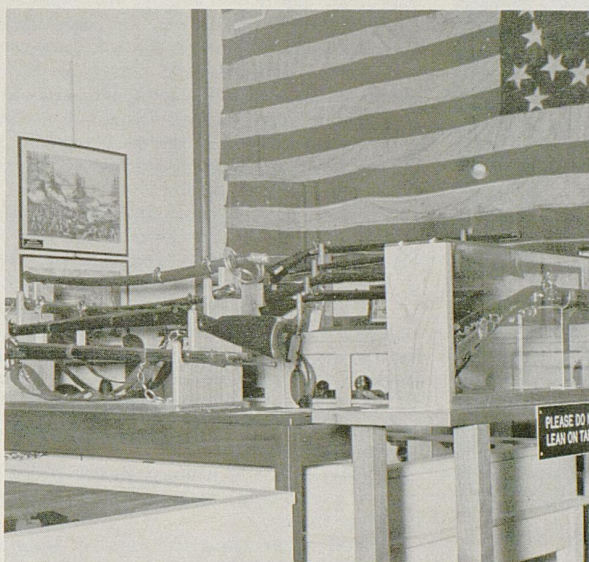
Early Kentucky woodshop display



Old Kentucky kitchen utensils



Dr. Tapp with dulcimer collection



Military relics room

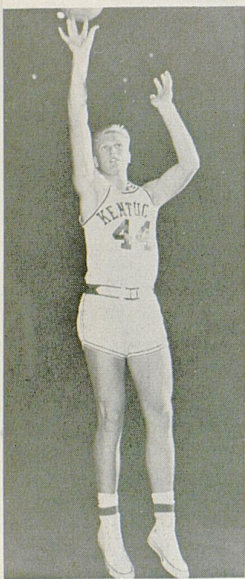
Slave quarters at Waveland





ADOLPH RUPP

KENTUCKY BASKETBALL 1963-64



COTTON NASH
LARRY CONLEY



Cagey Adolph Rupp didn't acquire his reputation as the nation's most successful basketball coach by "singing the blues," but the usually optimistic Baron of the Blue Grass is frankly fearful that his 34th edition of Kentucky Wildcats could go to the post with "possibly the poorest outlook for a winning season since I have been coaching."

Such uncharacteristic pessimism is truly bad news for the team that is acknowledged as the winningest collegiate cage outfit in history, but it also could be a good sign.

Just a year ago, the veteran Kentucky mentor freely predicted a banner season to compare favorably with the great years of the past. But the "roof caved in" as a variety of troubles dogged the Wildcats all season long, resulting in the poorest record of the Rupp era—a 16-9 count.

While loyal Kentuckians are hopeful that seven returning lettermen—headed by two-time All-American Cotton Nash and 1963 Most Valuable Player Ted Deeken—can lead the way to a better campaign than Rupp anticipates, the questions revolving around a short-handed roster are many, varied and serious.

Perhaps the biggest key to the type of season Kentucky has is Nash. Although he notched points at a 20.6 clip last season and repeated on some All-America selections, he disappointingly fell off the sensational pace started during a terrific sophomore break-in year when he led the SEC in scoring. Deeken, whose supreme "fireman" efforts in the closing stages of last season saved many a game and won him MVP honors, represents another major question: "Can he turn in a consistently good contribution as a season-long starter?"

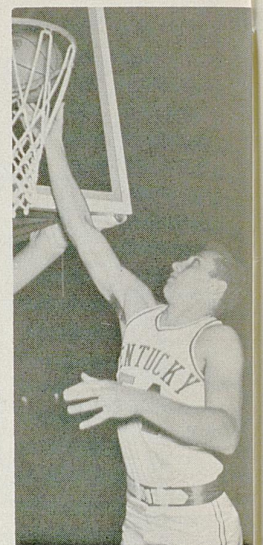
Charles (Chili) Ishmael, 6-4½ guard standout, looms ready to make a big contribution as a long-range threat if he can pick up where he left off (due to scholastic troubles) late last season.

Still other questions revolve around the potential of a trio of highly-regarded sophomores—6-3 forward Larry Conley, 6-5 guard Tommy Kron, and 6-2 forward Mickey Gibson. It is unknown if these soph hot shots can take up the scoring slack and perform with the poise of veterans without the benefit of experience.

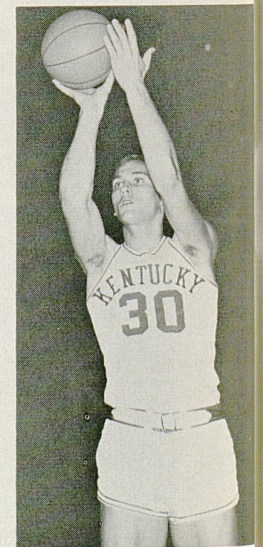
It's obvious that Coach Rupp bases his fear on the possibility that all of these questions will not be answered satisfactorily.

The schedule offers no solace, either, with a danger-plagued road littered with seven tough non-conference tests, play in two tournaments and league competition stacking up as possibly the strongest in history.

All problems considered, the prospects for success coming easy in 1963-64 to Kentucky's amazing basketeers are not rosy—at least not outwardly. But there is a sneaky suspicion afoot, well-founded by past experience, that "Uncle Adolph" will have his Blue Grass bouncers jumping before the campaign is too far along.



TED DEEKEN
TOMMY KRON



1963-64 BASKETBALL SCHEDULE

1963

Nov. 30 (Sat.)—Virginia	Lexington
Dec. 2 (Mon.)—Texas Tech	Lexington
Dec. 7 (Sat.)—Northwestern	Evanston
Dec. 9 (Mon.)—North Carolina	Lexington
Dec. 14 (Sat.)—Baylor	Lexington
Dec. 20-21 (Fri.-Sat.)—U.K. Invitational Tourn. (Wake Forest, Princeton, Wisconsin, and Kentucky)	Lexington
Dec. 28 (Sat.)—Notre Dame	Louisville
Dec. 30-31 (Mon.-Tues.)—SUGAR BOWL TOURNAMENT (Duke, Auburn, Loyola, Kentucky)	New Orleans

1964

Jan. 4 (Sat.)—Georgia Tech	Atlanta
Jan. 6 (Mon.)—Vanderbilt	Nashville
Jan. 10 (Fri.)—Louisiana State	Lexington
Jan. 11 (Sat.)—Tulane	Lexington
Jan. 18 (Sat.)—Tennessee	Lexington
Jan. 25 (Sat.)—Georgia Tech	Lexington
Feb. 1 (Sat.)—Florida	Gainesville
Feb. 3 (Mon.)—Georgia	Athens
Feb. 8 (Sat.)—Mississippi	Lexington
Feb. 10 (Mon.)—Mississippi State	Lexington
Feb. 17 (Mon.)—Vanderbilt	Lexington
Feb. 22 (Sat.)—Auburn	Auburn
Feb. 24 (Mon.)—Alabama	Tuscaloosa
Feb. 29 (Sat.)—Tennessee	Knoxville
Mar. 2 (Mon.)—St. Louis	Lexington

OUR WILDCATS . . .

LIKE OUR THOROUGHBREDS . . .

ARE MIGHTY IMPORTANT TO THE STATE OF KENTUCKY

AND WE'RE PROUD OF BOTH

Traditionally, Perennially—Kentucky-Breds Best By Far!

We Hope You Will Visit Our Many Beautiful Horse Farms In And
Around Lexington

The Latch String Is Always On The Outside!

Thoroughbred Breeders of Kentucky

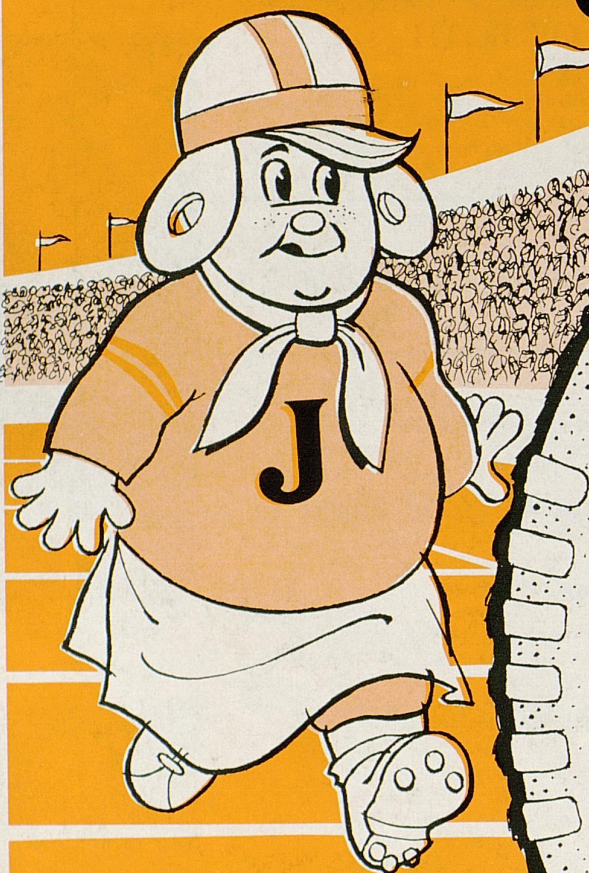
1410 Versailles Road — Lexington

Leslie Combs II, President

Billy Thompson, Executive Director

AFTER THE GAME GO...

Jerry's



FIVE LOCATIONS

1. 357 S. Lime
(Opposite U.K.)
2. 1949 Nicholasville Rd.
(At Southland Drive)
3. 652 E. Main St.
(Opposite Henry Clay Hi)
4. 1127 Winchester Road
5. North Broadway and
New Circle Road

PROGRAM NOTE:

Tune to W.H.A.S. Radio (840)
for "Football Warm-Up Time"
10 minutes prior to kick-off
brought to you by JERRY'S.