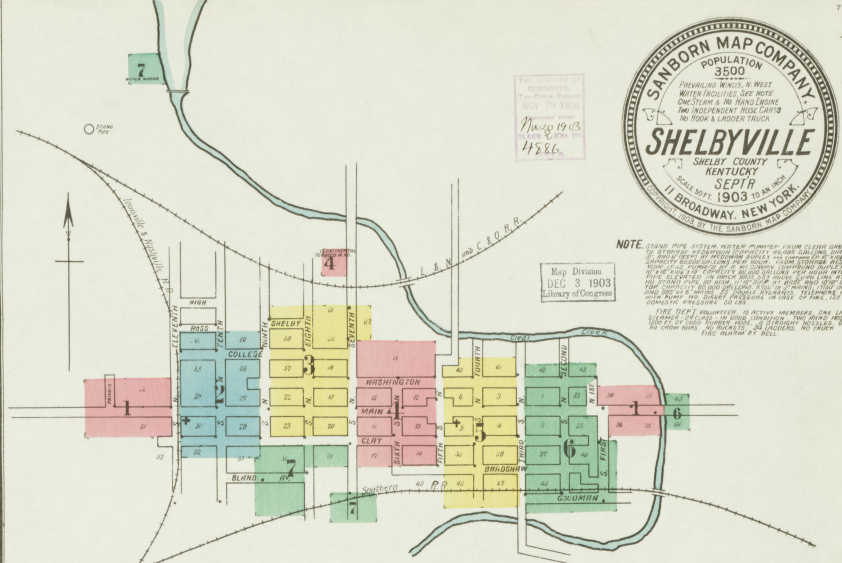




Map Division  
DEC 3 1903  
Library of Congress

NOTE: This map shows only the buildings and structures shown on the ground. It does not show the location of the streets, sidewalks, or other features. The buildings are shown in yellow, and the streets are shown in red. The map is a plan view, and the buildings are shown from above. The streets are shown as lines on the ground. The map is a plan view, and the buildings are shown from above. The streets are shown as lines on the ground.



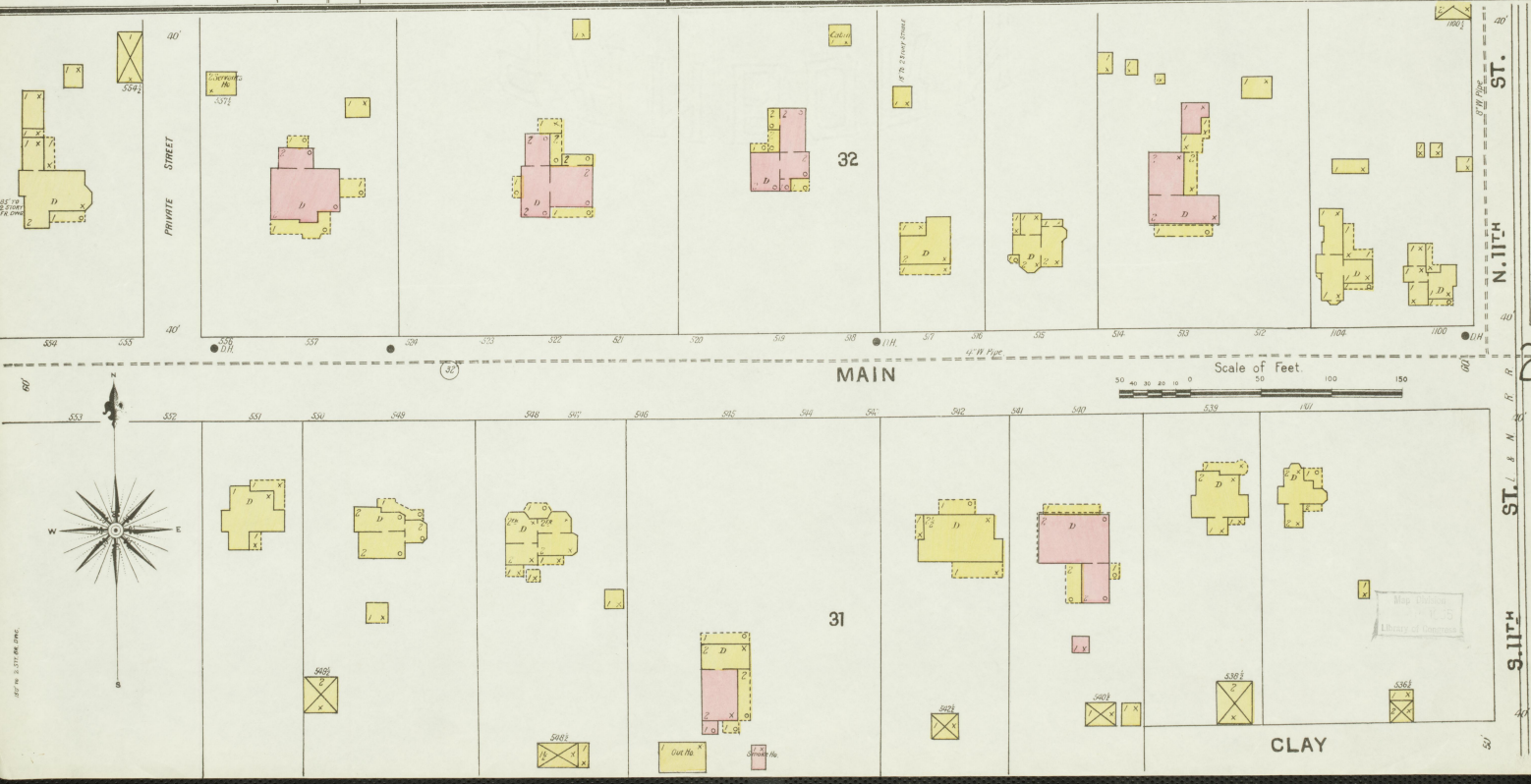
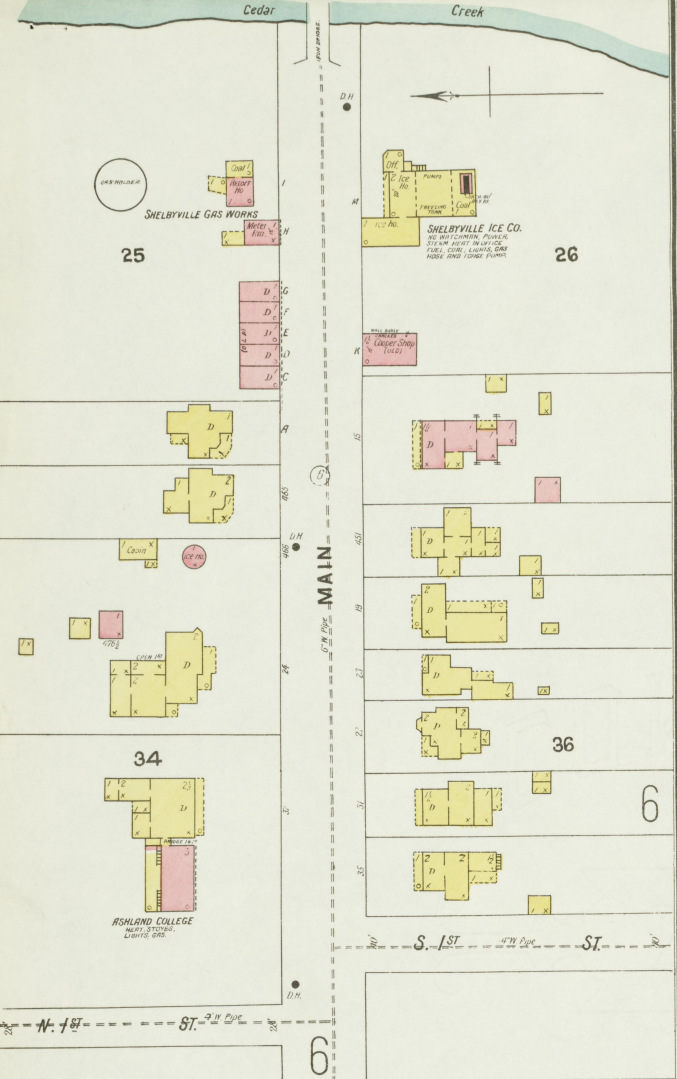
**INDEX.**

STREET	NUMBER	STREET	NUMBER	STREET	NUMBER
Blad Ave.	100-235 7	Seventh, N.	101-305 4	Continental Tobacco Co. Warehouse	4
Bradshaw	300-431 5	" S <sub>1</sub>	307-328 3	County Court House and Jail	4
"	500-538 4	" S <sub>2</sub>	100-113 3	"	6
"	501-509 5	Eleventh, N.	200-321 7	Episcopal Church	6
Clay	100-235 6	" S <sub>1</sub>	100-112 1	Fountain Square Hotel	5
"	300-431 5	" S <sub>2</sub>	100-112 1	"	6
"	700-830 3	" S <sub>3</sub>	101-301 2	Gruber, L. H. & Son, Wood Working	5
"	701-833 4	" S <sub>4</sub>	100-112 1	Guthrie, J. D. & Sons, Mill & Elevr	3
"	900-1035 2	" S <sub>5</sub>	101-113 2	Hall, A. L., Tobacco Warehouse	6
College	700-829 3	" S <sub>6</sub>	101-115 1	" & Son, Coal	3
"	900-1035 2	" S <sub>7</sub>	101-115 1	" Cooper Shop	7
				" Lumber, &c.	4
				" & Channing, Coal, Lumber, &c.	3
				" E., Florist	4
				Hammond, J. H. & Bro, Carriage Fac.	3
				"	3
				Layson's Opera House	4
				Logan & Logan, Roller Mills	6
				L. & N. R. R. Freight Depot	3
				"	4
				Presbyt. Church, Main, cor. 7th Street	2
				" " " " " 9th " "	2
				Salem Hill Academy	4
				Shelby College	5
				" News Printing	3
				Shelbyville Fair Grounds	7
				" Gas Works	6
				" Ice Co.	4
				" Southern R. R. Depot	1
				" Steam Laundry	4
				" Water and Light Co.	7
				Stuart's College	6
				"	3
				Trinity Methodist Episcopal Church	4
				"	5
				Y. M. C. A. Building	3

**STREETS.**

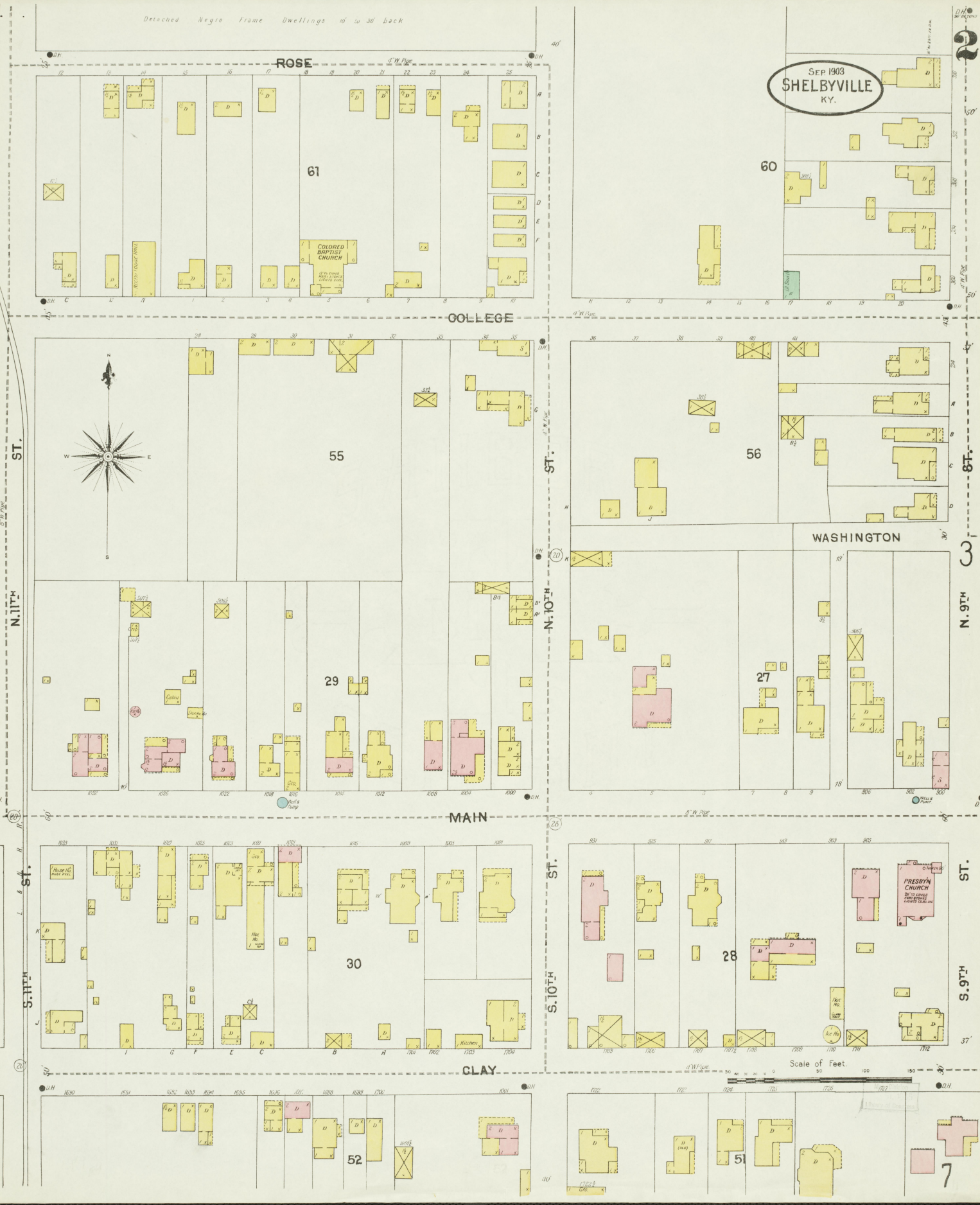
STREET	NUMBER	STREET	NUMBER
Blad Ave.	100-235 7	Seventh, N.	101-305 4
Bradshaw	300-431 5	" S <sub>1</sub>	307-328 3
"	500-538 4	" S <sub>2</sub>	100-113 3
"	501-509 5	Eleventh, N.	200-321 7
Clay	100-235 6	" S <sub>1</sub>	100-112 1
"	300-431 5	" S <sub>2</sub>	100-112 1
"	700-830 3	" S <sub>3</sub>	101-301 2
"	701-833 4	" S <sub>4</sub>	100-112 1
"	900-1035 2	" S <sub>5</sub>	101-113 2
College	700-829 3	" S <sub>6</sub>	101-115 1
"	900-1035 2	" S <sub>7</sub>	101-115 1

\* Indicates only one side of Street shown.



Detached Negro Frame Dwellings w' to 30' back

SEP 1903  
SHELBYVILLE  
KY.



61

60

55

56

29

27

30

28

52

51

7

ROSE

COLLEGE

MAIN

CLAY

WASHINGTON

ST.

N. 11th

ST.

S. 11th

ST.

N. 10th

ST.

S. 10th

ST.

N. 9th

ST.

S. 9th

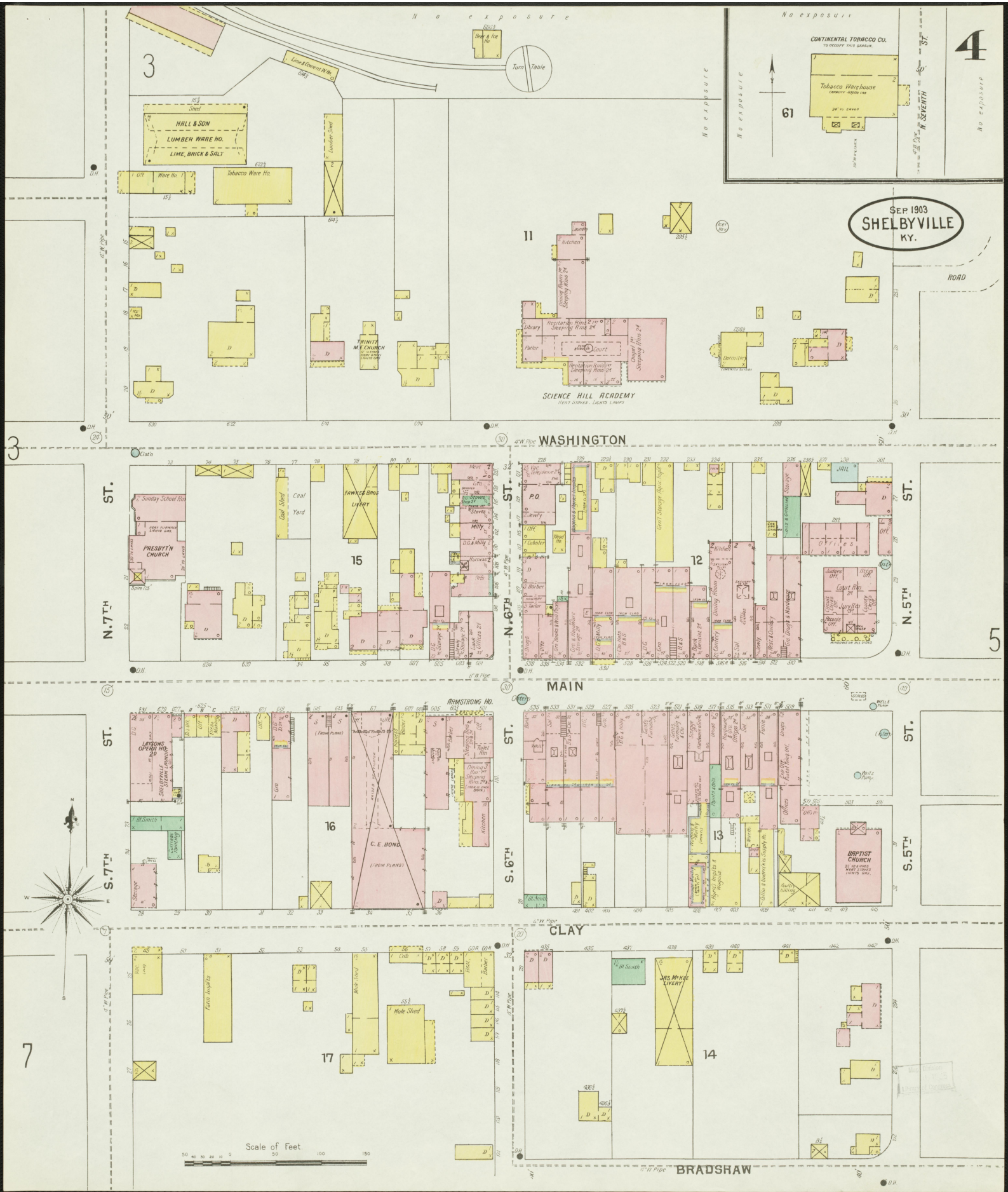
Scale of Feet

2

3

1



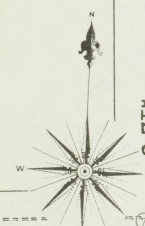


4

SEP 1903  
SHELBYVILLE  
KY.

5

7

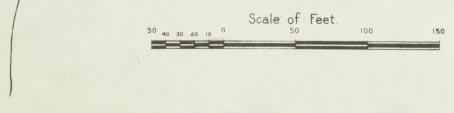
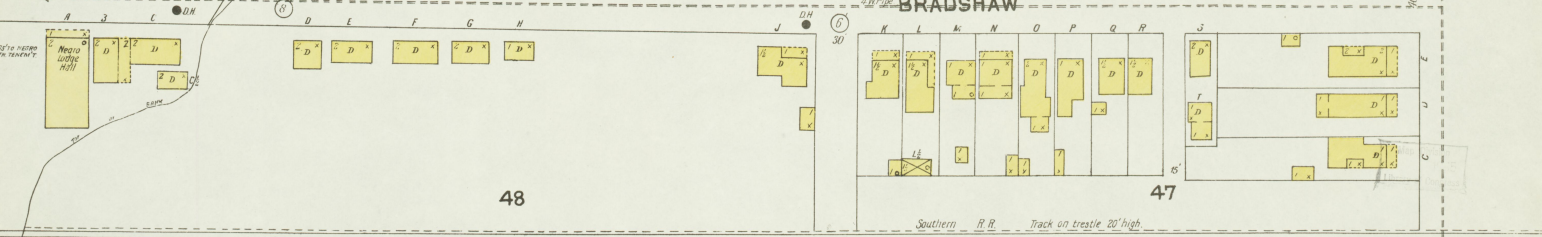
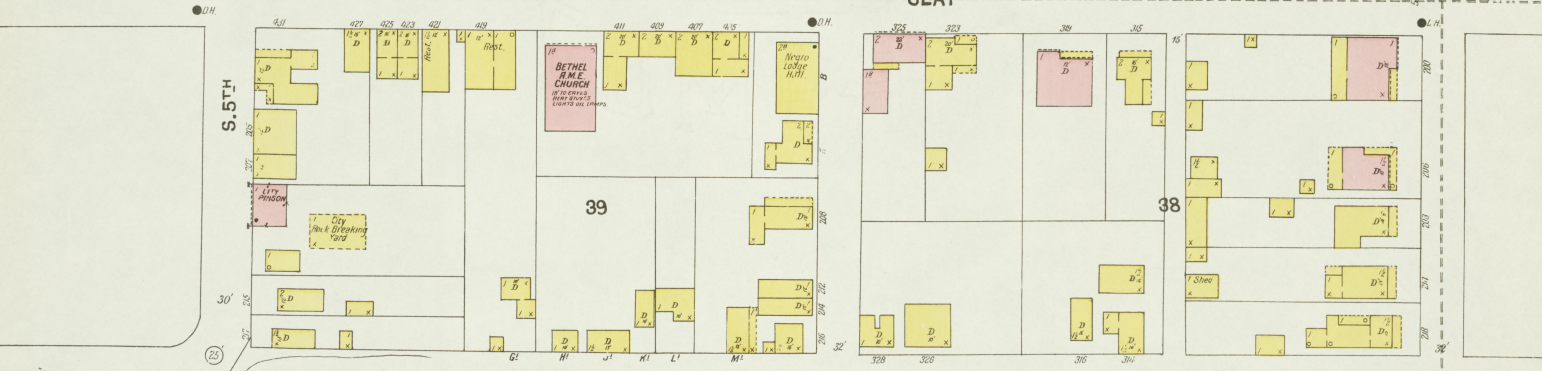
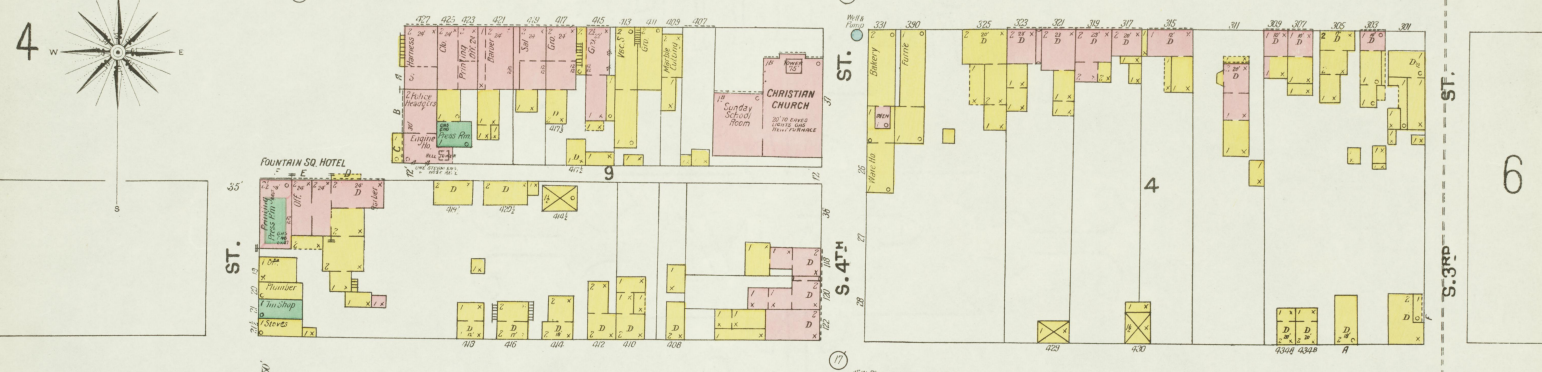
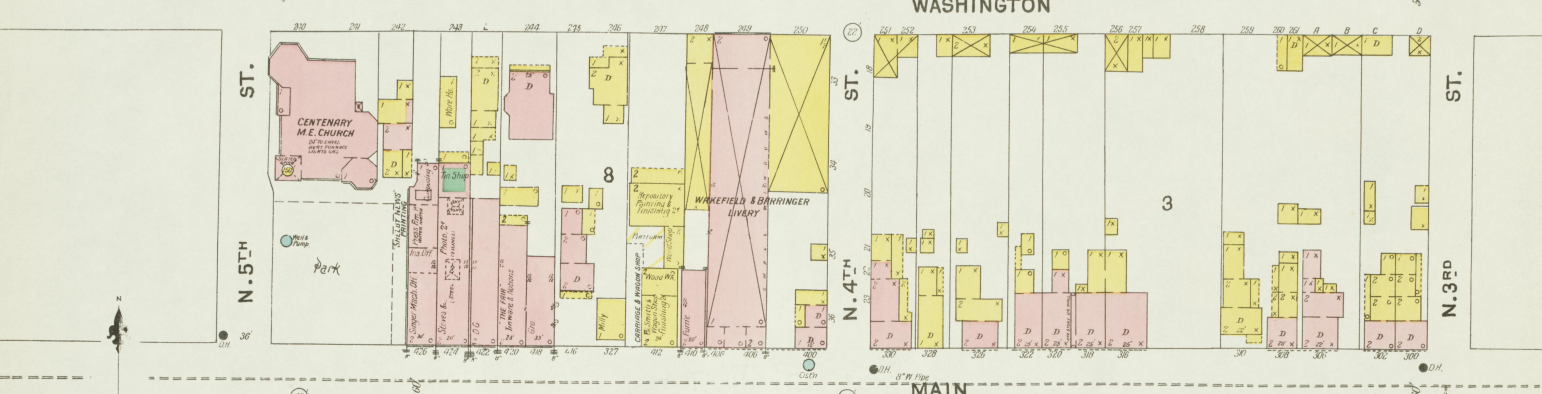


Scale of Feet

BRADSHAW

SEP 1903  
SHELBYVILLE  
KY.

5



N o e x p o s u r e

GOODMAN AV.

