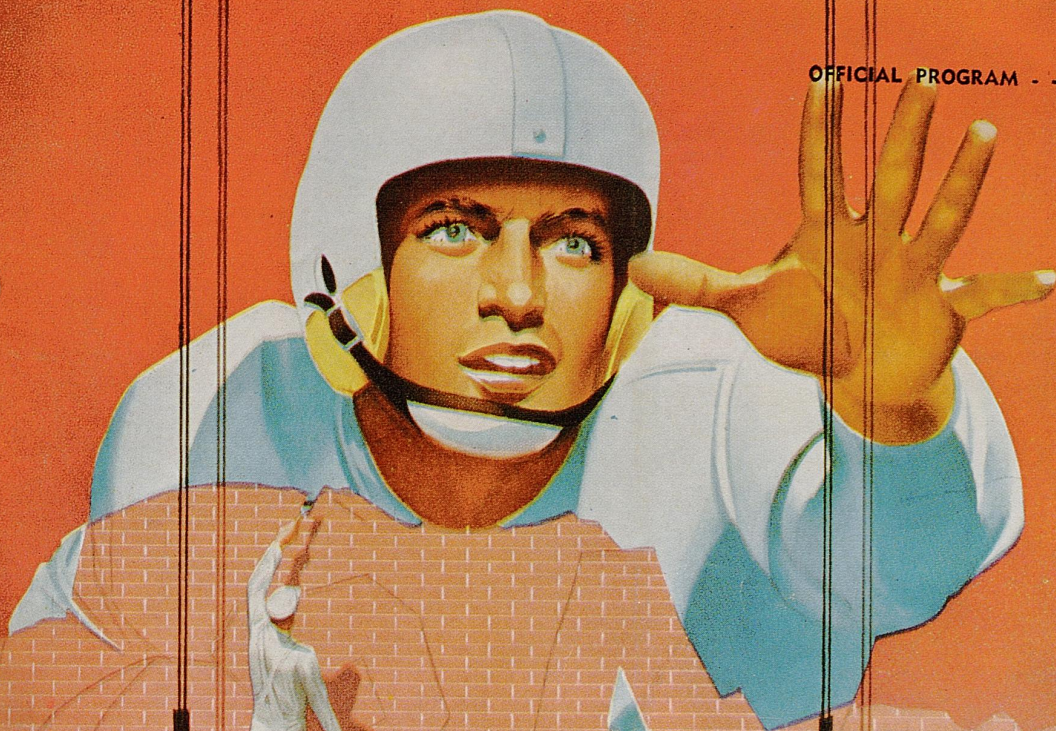


OFFICIAL PROGRAM - - - TWENTY-FIVE CENTS



HOME

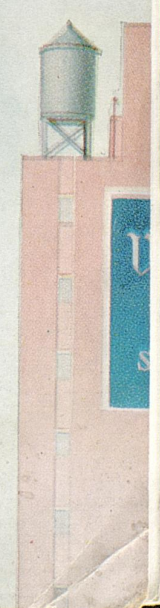
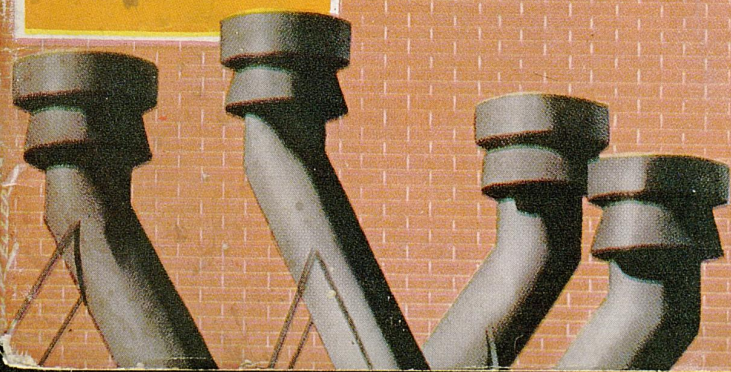
- Sept. 19 Texas A&M
- Oct. 3 Florida
- Oct. 17 Miss. State
- Oct. 24 Villanova
- Nov. 14 Memphis State
- Nov. 21 Tennessee

AWAY

- Sept. 26 Mississippi
- Oct. 10 L. S. U.
- Oct. 31 Rice
- Nov. 7 Vanderbilt

KENTUCKY
VS
TEXAS A&M

SEPTEMBER 19 • 1953 • STOLL FIELD

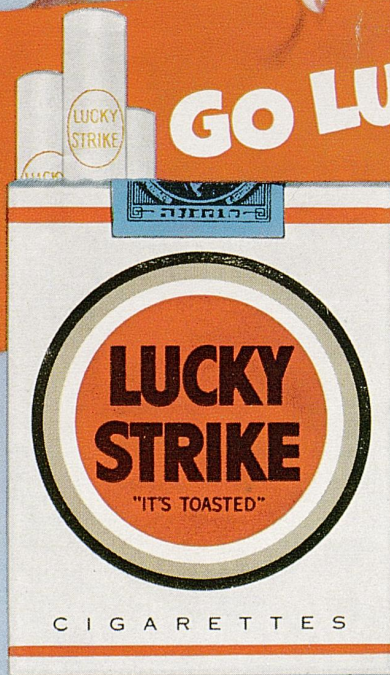


LUCKIES TASTE BETTER!

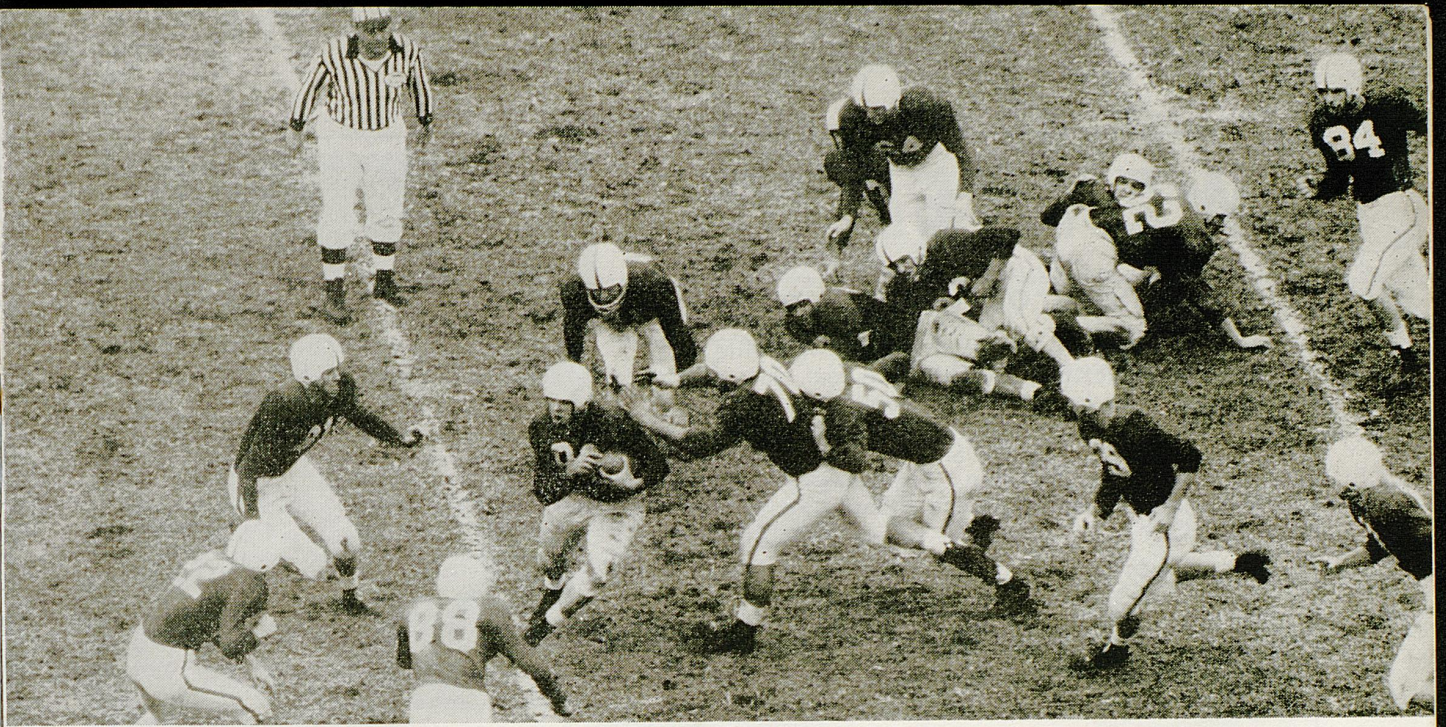
Cleaner, Fresher,
Smoother!

Be Happy

GO LUCKY!



COPR., THE AMERICAN TOBACCO COMPANY



KENTUCKY *(Wildcats)*

vs TEXAS A & M *(Aggies)*

Stoll Field—September 19, 1953

CONTENTS

Kentucky Coaching Staff	3
UK Executives	4
Kentucky 1953 Schedule	5
Kentucky Co-Captains	6
Coach Paul Bryant	7
Official Signals	8
List of Penalties	9
Texas A & M Executives	11
Texas A & M Coach and Players	14-15
Kentucky Lineup	18
Texas A & M Lineup	19
Kentucky Squad Roster	22
1953 Rules Changes	26

TODAY'S GAME

The Aggies showed surprising offensive power and a stingy defense in allowing UK a 10-7 win on a third-quarter field goal last year in an auspicious opening of football relations with the Bluegrass eleven. The experts are tabbing Coach George's crew for another lean season in '53, mainly on the absence of 16 lettermen, but A & M will be experimenting with a new offensive system (combination T and single wing) and could catch fire to surprise any team taking them lightly. Replacing sensational quarterback Ray Graves, one of the best faced by the Wildcats last season, will be halfback Don Ellis, moved from left half. The backfield should be strong with help from veterans fullback Don Kachtik and halfbacks Connie Magouirk and Bob Easley. Most promising in the "small and inexperienced" line are guard Sid Theriot, tackle Larry Winkler and end Eric Miller. Reportedly, Coach George will unbalance the line in his new system to play both tackles on one side of the center. Overall, the Aggies are a young team that could catch fire and surprise some people.

WENNEKER'S

"Shoes of Champions"

You don't have to be a champion to wear fine shoes from WENNEKER'S but you can rest assured that any shoe purchased at this friendly store will be of champion quality and appearance. Save 25 to 50 percent on FAMOUS NAME BRAND SHOES for both men and women. For years WENNEKER'S has brought you FAMOUS BRANDS at LOWEST PRICES.

Featured At Wenneker's
WINTHROP
FAMOUS BRAND SHOES



All good things come in pairs. The fabulous Jones twins of Kentucky football examine a beautiful pair of shell cordovan shoes at WENNEKER'S. A championship pair themselves, they have the taste of champions when it comes to choosing their footwear and it would appear from the expressions that they found the right pair at WENNEKER'S.

You don't have to make a purchase to enjoy the friendly atmosphere at WENNEKER'S. Drop in any time. Have a "coke", and enjoy chatting with your favorite sports personalities who often visit WENNEKER'S. You are always welcome.

For the Ladies!

First in fashion, and first in value for the ladies also is WENNEKER'S . . . You'll find your favorite FAMOUS NAME BRAND SHOES at 25 to 50 percent savings. Be wise. Shop at WENNEKER'S and enjoy wearing two pairs of famous brand name shoes for the price of one.

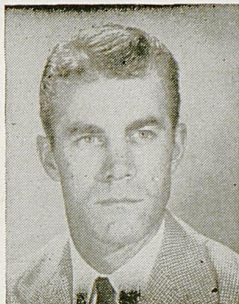
SAMPLE
Wenneker's
SHOES

153 EAST MAIN STREET
in LEXINGTON

Kentucky Coaching Staff



CLARENCE UNDERWOOD
(Marshall '38)



ERMAL ALLEN
(Kentucky '42)



JIM OWENS
(Oklahoma '50)



JERRY CLAIBORNE
(Kentucky '50)



PHIL CUTCHIN
(Kentucky '43)



PAT JAMES
(Kentucky '52)

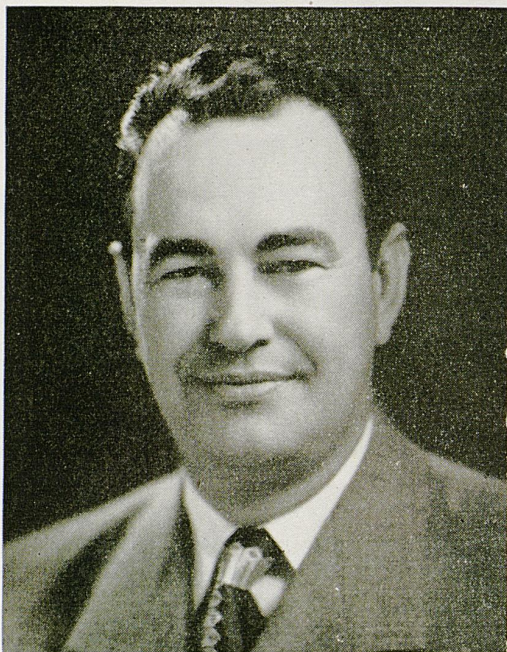
Standard furniture company

PHONE 2-2180 — 221-223 EAST MAIN — LEXINGTON 31, KENTUCKY

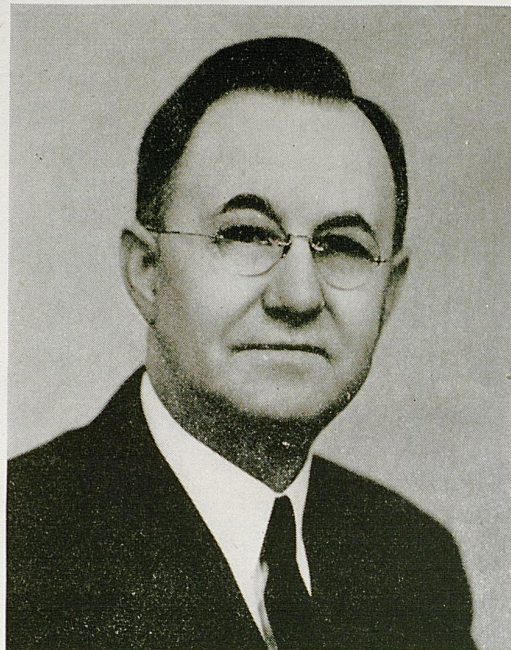
THE STORE WHERE QUALITY LEADS — PRICES TO FIT
EVERY BUDGET

FOR COMPLETE REPORTS ON THIS GAME AND OTHERS BEING PLAYED
TODAY, READ THE SPORTS SECTION OF SUNDAY HERALD-LEADER

University of Kentucky



THE HONORABLE
LAWRENCE W. WETHERBY
Governor of Kentucky



DR. HERMAN LEE DONOVAN
President
University of Kentucky

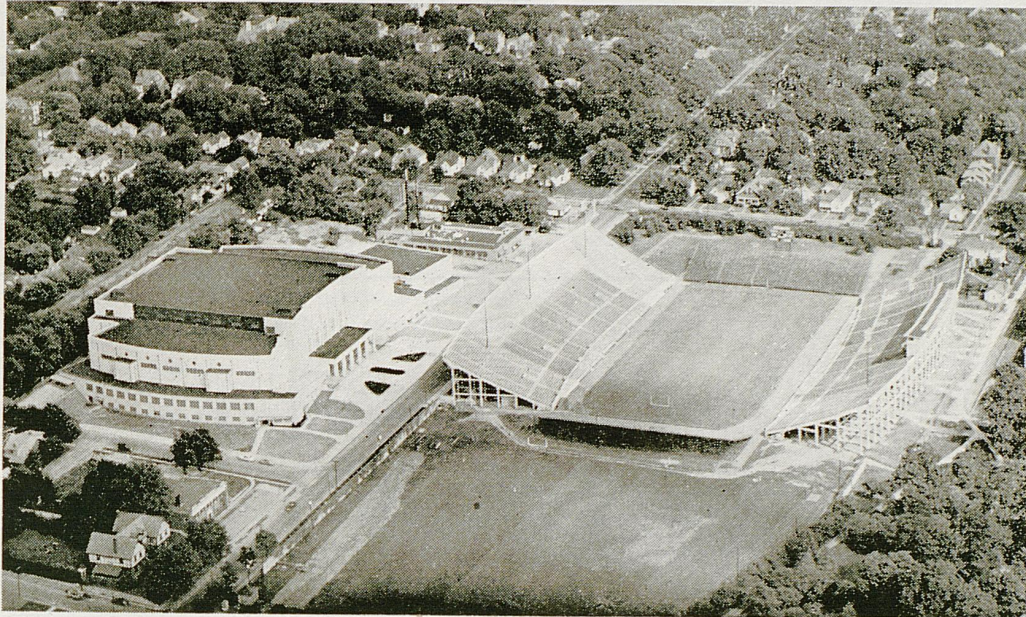


BERNIE A. SHIVELY
Director of Athletics

A trio of sports-minded executives who are among the leading supporters of Kentucky's fighting Wildcats, Governor Wetherby, Dr. Donovan and Director Shively lend valuable support to the axiom that "You Cannot Have A Great State Without A Great State University" through their contributions to the U.K. athletics program.

*You Cannot Have a Great State
Without a Great State University*

HOME OF THE WILDCATS



THE WILDCATS' 1953 SCHEDULE

Date	Opponent	Place
Sept. 19	Texas A & M	Lexington (N)
Sept. 26	Mississippi	Oxford
Oct. 3	Florida	Lexington (N)
Oct. 10	L. S. U.	Baton Rouge
Oct. 17	Mississippi State	Lexington (N)
Oct. 24	Villanova	Lexington (N)
Oct. 31	Rice	Houston
Nov. 7	Vanderbilt	Nashville
Nov. 14	Memphis State	Lexington
Nov. 21	Tennessee	Lexington (1:30 P.M.)

(Starting times — Day Games: 2 p.m. — Night Games: 8 p.m.)

CHEVY CHASE PHARMACY

848 E. HIGH ST.

Enjoy our delicious hot dogs, hamburgers, grilled sandwiches, home-made chili, beef stew!

We also carry many items for your Sunday night snack — milk, bread, cheese, crackers, sardines!

W. E. McGURK

P. L. CLARK

FRED BRYANT MOTOR CO.
 Good Luck and Good Wishes To The *WILDCATS*
 '88' — OLDSMOBILE — '98'

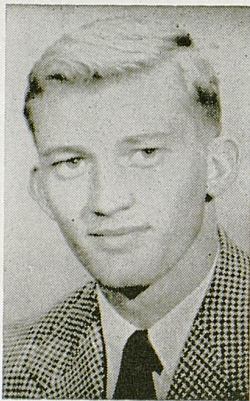
Union Station Viaduct

Phone 2-7222

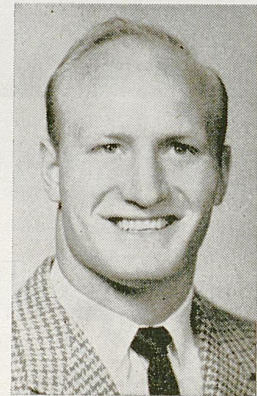
KENTUCKY'S "NATIVE SON"

CO-CAPTAINS

1953



TOMMY ADKINS
 Senior — Center
 Corbin, Ky.



RAY CORRELL
 Senior — Guard
 Somerset, Ky.

your home in Lexington

TOWN HOUSE MOTEL

SOUTH LIME AT ROSE

Lexington, Ky.

Phone 3-5274

SCORES OVER STOLL FIELD PUBLIC - ADDRESS SYSTEM COME TO
 YOU THROUGH THE COURTESY OF THE LEXINGTON NEWSPAPERS

PAUL (Bear) BRYANT
Head Football Coach
University of Kentucky

One of the nation's most outstanding football mentors by tests of both success and leadership in the collegiate field, Coach Paul (Bear) Bryant has lifted Kentucky out of the football doldrums and firmly established them in national prominence.

The youthful former Alabama star end, who risked a promising future when he moved to Kentucky in 1946, is recognized and respected in the grid world for his successful record with the Wildcats—winners of 53 games while losing only 21 and tying four in the seven seasons of the Bryant Era, including four major bowl appearances and a conference title.

Bryant also is known as a pioneer, unafraid to take a chance on something that seems right, and this attitude is reflected in a unique policy adopted in 1952. Firmly believing widespread recruiting of high school standouts to be one of the game's biggest evils, the Kentucky chieftan voluntarily took the lead in restricting recruiting of players to home-state boundaries. He decreed a "Kentucky first" plan that limited out-of-state scholarship grants to five per year and ordered that in all cases the non-resident "must seek us out voluntarily."

That the amazing Mr. Bryant has been right before pleases his followers and worries his opponents. In 1946, when he gave up the reins at Maryland after a successful first season as head coach, Bear asked for a five-year contract. He explained that it would take that time to get the Wildcats established in winning ways. The final chapter of Bryant's "Five-Year Plan" was written in 1950 with a sensational flourish. As predicted, Kentucky hit its winning stride by capturing the school's first Southeastern Conference championship on a 10-1 record and pulled the upset-of-the-century in knocking off national champion Oklahoma in the Sugar Bowl. The road to national prominence has not been an easy one, but Coach Bryant can look back on a record of never having experienced a losing campaign.



The Phoenix Hotel

"Lexington's Largest and Finest"

400 Rooms . . .

2 Restaurants . . .

2 Cocktail Lounges

Just the place to meet and greet
 your friends

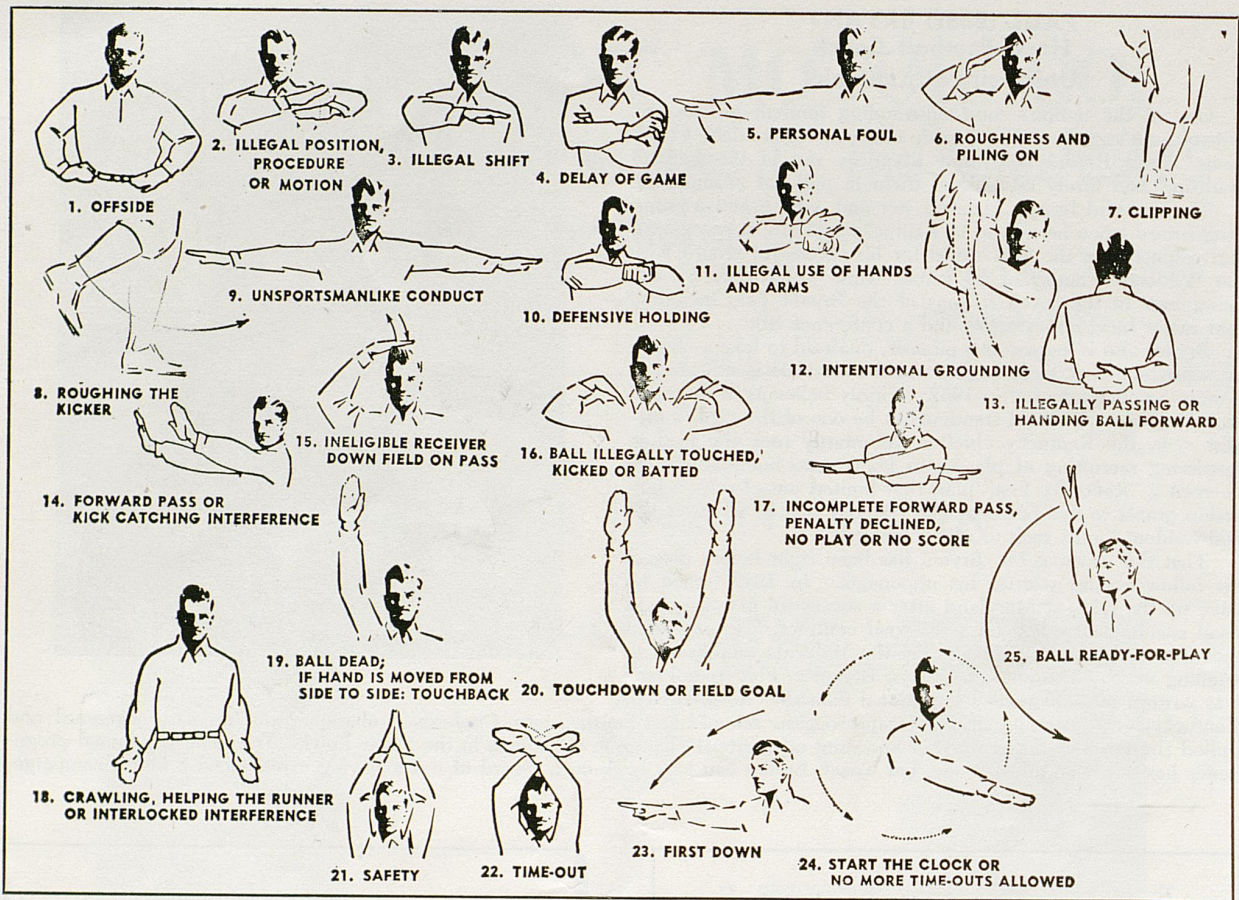
1952 RESULTS

(WON 5, LOST 4, TIED 2)

Opponent	Site	UK	Opp.	Crowd
Villanova	(H)	6	25	33,000
*Mississippi	(H)	13	13	29,000
Texas A & M	(A)	10	7	25,000
*L. S. U.	(H)	7	34	28,000
*Miss. State	(A)	14	27	18,000
Cincinnati	(A)	14	6	27,000
Miami	(A)	29	0	26,000
*Tulane	(H)	27	6	31,000
Clemson	(H)	27	14	25,000
*Tennessee	(A)	14	14	35,000
*Florida	(A)	0	27	29,000
TOTALS		161	173	306,000
				Home Attendance—146,000

* Conference game.

FOR COMPLETE REPORTS ON THIS GAME AND OTHERS BEING PLAYED TODAY, READ THE SPORTS SECTION OF SUNDAY HERALD-LEADER



OFFICIAL WATCH FOR THIS GAME



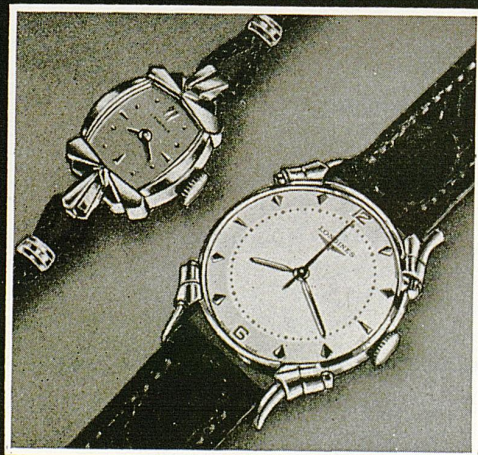
Longines



The World's Most Honored Watch

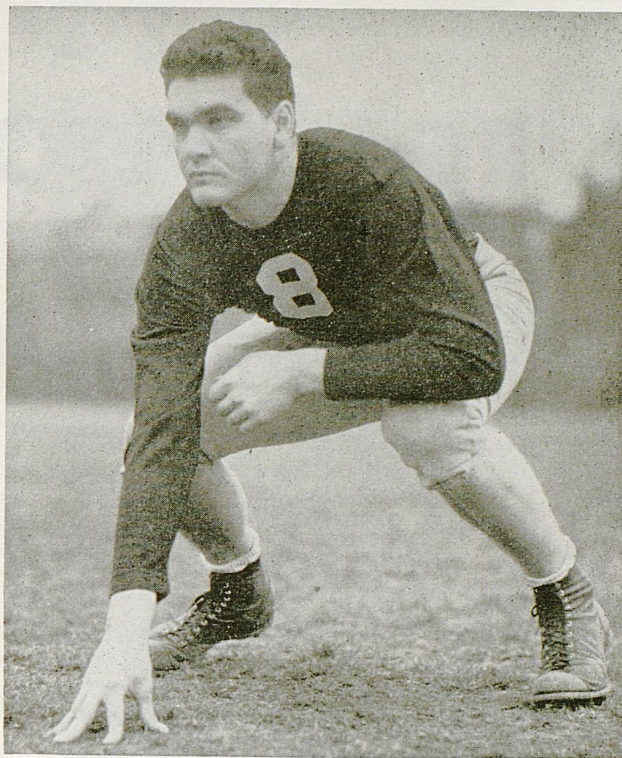
ACCEPTED AS OFFICIAL WATCH
FOR TIMING
CHAMPIONSHIP SPORTS EVENTS
IN ALL FIELDS ALL OVER THE WORLD

*Product of
Longines-Wittnauer Watch Company*



ALL-AMERICAN

It took stamina and hard work for Clyde Johnson to be the first U.K. football player to be named All-American back in 1942. For the past sixty-five years, our insistence on Excellence WITHOUT Extravagance has won All-American recognition for Graves, Cox & Co. as Kentucky's largest store for men and boys.



PENALTIES

1. Taking more than five times out during either half (except for replacement of injured player).
2. Illegal delay of game.
3. Failure to complete substitution before play starts.
4. Violation of kickoff formation.
5. Player out of bounds when scrimmage begins.
6. Putting ball in play before
15. Team not ready to play at scheduled time.
16. Violation of rules during intermission.
17. Illegal return of suspended player.
18. Interference by member of offensive team with defensive player making pass interception. (Also loss of down.)
29. Striking an opponent with fist, forearm, elbow or locked hands, kicking or kneeling - Mandatory disqualification of offending player plus loss of fifteen yards.
30. Foul within the one yard line - half the distance to the goal.
31. Interference by defensive team

LOSS OF FIVE YARDS

- Referee signals "Ready-for-play".
7. Failure to maintain proper alignment of offensive team when ball is snapped. Also, backfield man illegally in motion.
 8. Offside by either team or encroachment on neutral zone.
 9. Attempt to draw opponents

LOSS OF FIFTEEN YARDS

19. Interference with opportunity of player of receiving team to catch a kick.
20. Illegal use of hands or arms by offensive player.
21. Tackling or blocking defensive player who has made fair catch.
22. Roughing the kicker.

OTHER PENALTIES

- on forward pass - passing team's ball at spot of foul and first down.
32. Forward pass being touched by ineligible receiver beyond the line of scrimmage - loss of fifteen yards from spot of preceding down and loss of a down.
 33. Illegal touching of kicked ball

offside.

10. Crawling by runner.
11. Illegal forward pass (includes intentional grounding of forward pass). Also loss of down.
12. Taking more than two steps after Fair Catch is made.
13. Player on line receiving snap.
14. Any violation of the scrimmage formation.
23. Piling up, hurdling, clipping.
24. Tackling player out of bounds, or running into player obviously out of play.
25. Coaching from sidelines.
26. Failure to stop one full second following shift.
27. Defensive holding.
28. Invalid Signal for Fair Catch.

within opponent's ten yard line - touchback.

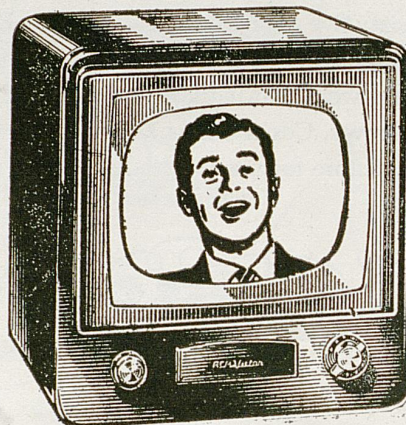
34. Flagrantly rough play or unsportsmanlike conduct - Mandatory disqualification plus loss of fifteen yards.
35. Eligible pass receiver who goes out of bounds and later touches a forward pass - loss of down.

RCA VICTOR *Television*

It's automatic!

It's powerful!

It's accurate!



17-inch Craig. Lowest priced RCA Victor television you can buy! Compact table model is finished in sleek ebony. Model 17S349.

\$179.95

It's Rotomatic Tuning!

Sterling

NOVELTY CO INC.

FAMOUS FOR FAMOUS BRANDS

669 South Broadway

Phone 2-6886

Texas A & M



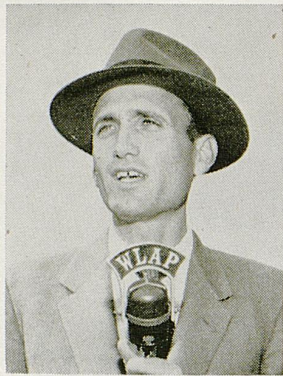
DAVID H. MORGAN
President



BARLOW IRVIN
Director of Athletics

Administration Building





WHEN HE CAN'T ATTEND . . .

The **KNOWING** Wildcat fan listens to **J. B. FAULCONER**, Kentucky's favorite Sports-caster on 5000 Watt **WLAP** for a **CLEAR — ACCURATE — HONEST** play-by-play.

AND YOU GET THE SAME . . .

DEPENDABLE report on any of the **25** Ashland-Aetna Sports Network stations throughout Kentucky "hooked-up" with **WLAP** on every Wildcat game!



YOU ALSO HEAR . . .

COACH PAUL "BEAR" BRYANT every **MONDAY** and **FRIDAY** night at **6:30 P.M.** when

"BRYANT SPEAKS"

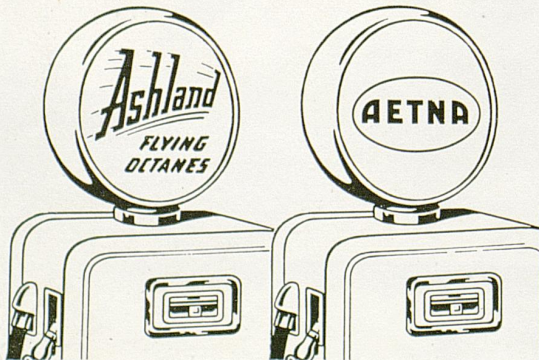
on **WLAP** dial 630



"Bryant Speaks" is also heard twice weekly on many other stations throughout Kentucky. Check your local listings for time and station.

All "WILDCAT" Games are Broadcast by the Ashland-Aetna Oil Sports Network

If you can't attend every game, listen to one of more than 25 radio stations broadcasting play-by-play accounts. Another service to Kentucky's host of fans by these two popular Kentucky oil companies — Ashland and Aetna.

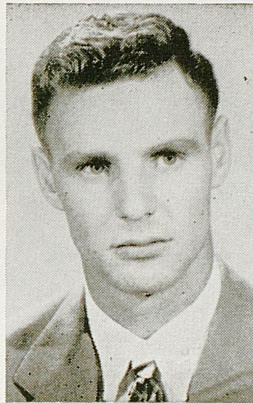


STOP AT ANY OF OUR STATIONS FOR
Free
"WILDCAT"
Team Picture
AND SCHEDULE OF ALL KENTUCKY COLLEGE GAMES BROADCAST

**SPONSORED BY
ASHLAND OIL & REFINING COMPANY
AND
AETNA OIL COMPANY**



JIM PROFFITT
Senior — End
Louisville, Ky.



TOM FILLION
Senior — Fullback
Owensboro, Ky.

The Lafayette Hotel

Extends a Cordial Welcome and an Invitation to the Football Fans to meet with us after the Games. Renew old friendships, greet new friends, and enjoy the spirit of good fellowship that abounds.

80% Air Conditioned



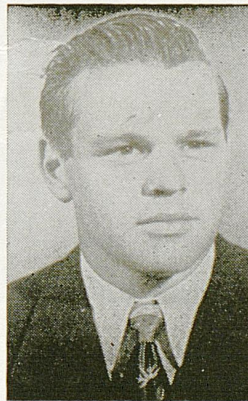
Do You
Motor?
Travel?

Attend football games and other athletic events? Then examine a

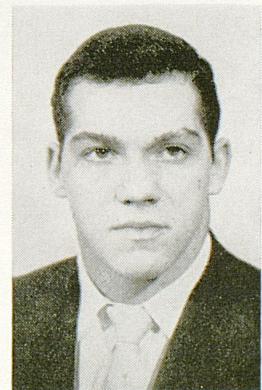
Bausch & Lomb Binocular at Tinder-Krauss-Tinder. Note its great light gathering power, wide field, ease of use, and rugged construction. Enthusiastically recommended by sportsmen, Army and Navy officers, aviators and other users as "The World's Best By Any Test."



Tinder-Krauss-Tinder
Opticians — Photographic Supplies
145 N. Upper Street Lexington

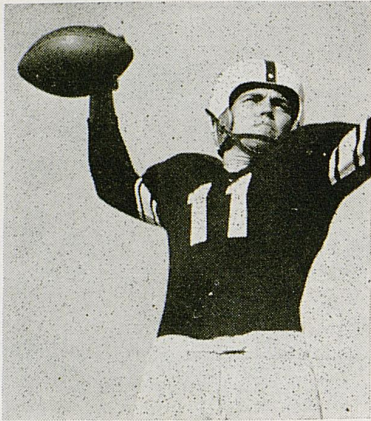


ALL-AMERICAN
CANDIDATE
STEVE MEILINGER
Senior
Halfback-Quarterback
End
Bethlehem, Pa.



JOE KOCH
Junior — Guard
Louisville, Ky.

FOR COMPLETE REPORTS ON THIS GAME AND OTHERS BEING PLAYED TODAY, READ THE SPORTS SECTION OF SUNDAY HERALD-LEADER

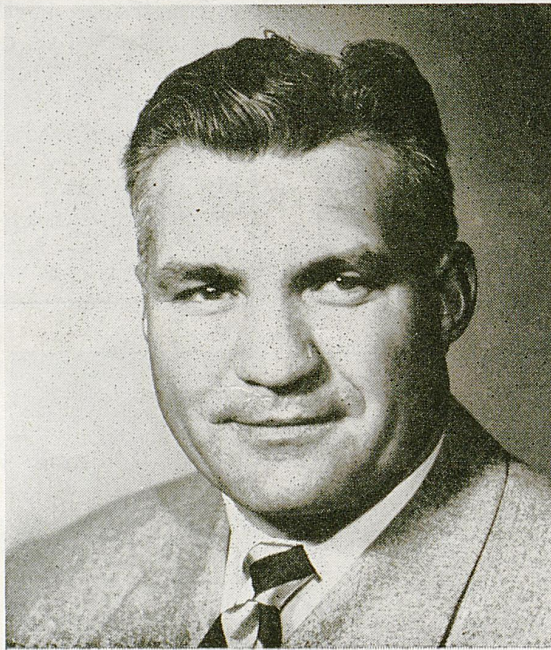


DON ELLIS
Quarterback

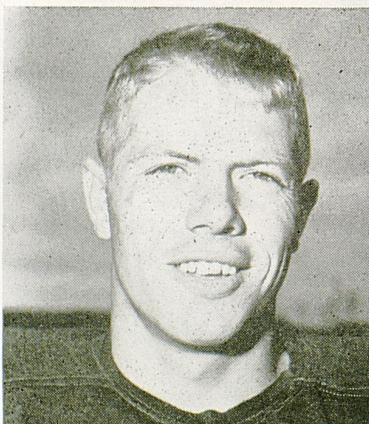
Texas A & M



SIDNEY THERIOT
Guard



RAY GEORGE
Head Coach



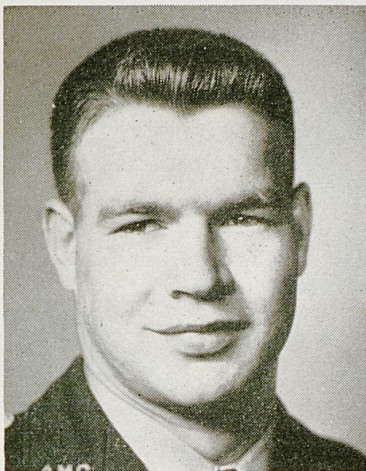
BILLY HUDDLESTON
Halfback

The Texas Aggies' head grid mentor is a former outstanding collegiate and professional tackle, having been an All-Pacific Coast star with the great Southern California Trojans of the late thirties and later a standout pro player with the Detroit Lions and Philadelphia Eagles. He begins his third season at the Texas A & M helm this year.

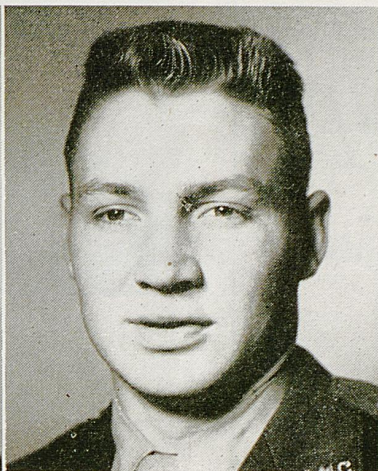


JOHN SALYER
Fullback

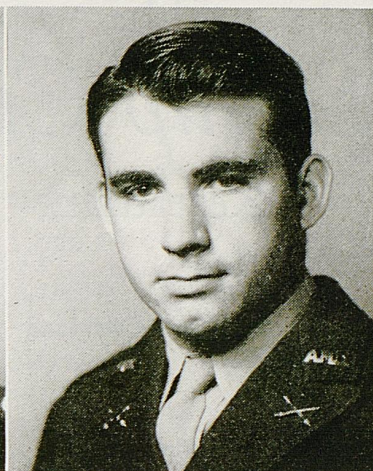
— Aggies —



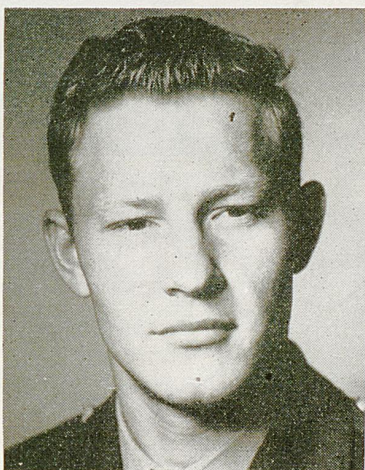
ERIC MILLER
End



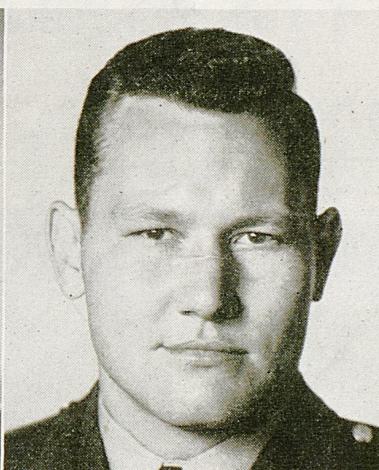
LAWRENCE WINKLER
Tackle



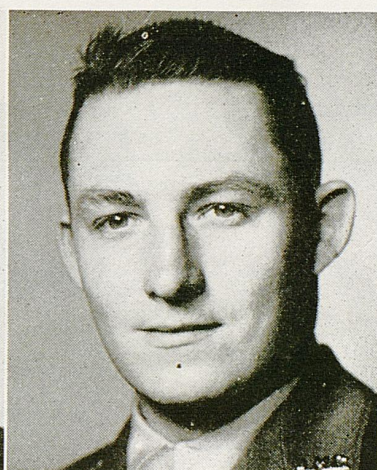
BOB GOSNEY
Guard



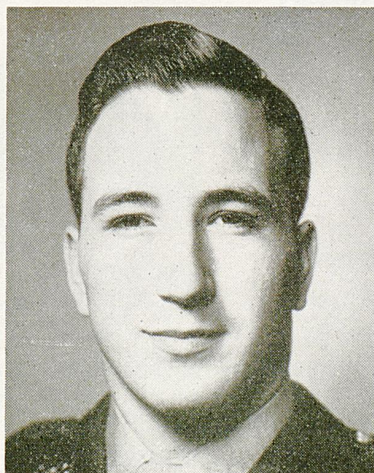
BENNIE SINCLAIR
End



DURWOOD SCOTT
Tackle



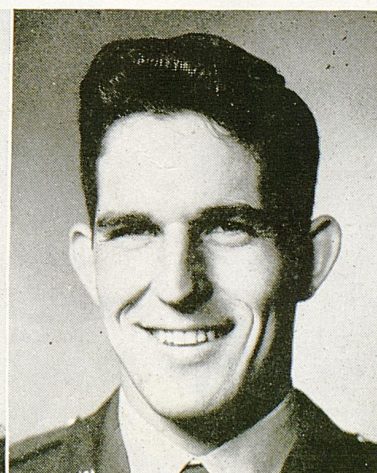
DON KACHTIK
Fullback



RAY BARRETT
Guard



JOE BORING
Halfback



CONNIE MAGOUIRK
Halfback

The
Stirrup Cup
 Restaurant

E. Main at Ashland

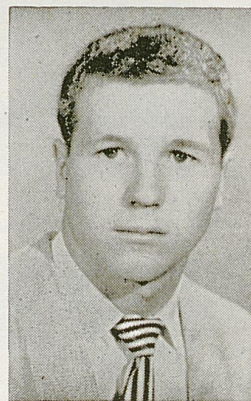
Serving Hours
 11:45 A.M. — 2 P.M.
 5 P.M. — 8:30 P.M.

Good Food

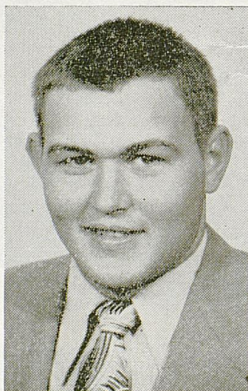
Free Parking



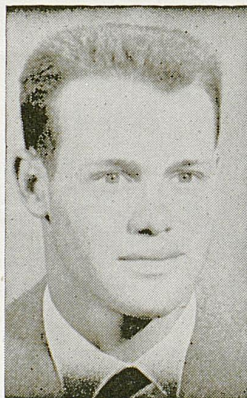
DICK RUSHING
 Junior — Fullback
 Camden, Ark.



JOE PLATT
 Senior — Halfback
 Kokomo, Ind.



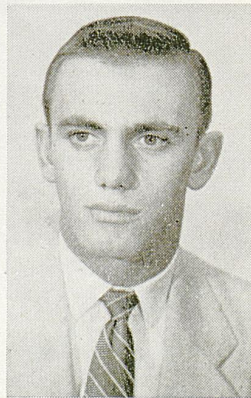
LEO STRANGE
 Sophomore — Center
 Louisville, Ky.



LOU KARIBO
 Junior — Student Manager
 Louisville, Ky.



BOB HARDY
 Sophomore — Quarterback
 Paducah, Ky.



HARRY KIRK
 Junior — Tackle
 Mt. Sterling, Ky.

SCORES OVER STOLL FIELD PUBLIC - ADDRESS SYSTEM COME TO
 YOU THROUGH THE COURTESY OF THE LEXINGTON NEWSPAPERS

We're Pulling For...

KENTUCKY'S
WILDCATS

*To Make 1953
A Great Season*

KENTUCKY

PROBABLE STARTING LINEUP

No.	Name	Position
84	H. SCHNELLENBERGER	LE
77	TOM HARPER	LT
65	RAY CORRELL	LG
50	TOMMY ADKINS	C
66	JOE KOCH	RG
72	BILL WHEELER	RT
87	JIM PROFFITT	RE
17	DICK SHATTO	QB
80	STEVE MEILINGER	LH
22	DICK MOLONEY	RH
31	TOM FILLION	FB

THE WILDCATS SQUAD

11	Rushing, FB	61	Allen, RG
14	Hardy, QB	62	D. Curnutte, RG
16	Hunt, QB	63	Stuart, RG
17	Shatto, QB	64	Rouse, LG
18	Bezuk, QB	65	Correll, LG
19	Hughes, QB	66	Koch, RG
20	George, LH	67	Lowry, LG
21	I. Curnutte, LH	68	Bennett, RG
22	Moloney, RH	69	Waite, RE
23	Karibo, LH	70	Frankenberger, LT
24	Brown, RH	71	Schenk, RT
25	B. Mitchell, LH	72	Wheeler, RT
26	D. Mitchell, LH	73	Butler, LT
27	Elliott, RH	74	Petett, LT
28	Phillips, RH	75	Lutz, LT
29	Platt, RH	76	Bivin, LT
31	Fillion, FB	77	Harper, LT
32	Netoskie, RH	79	Kirk, RT
33	Hanley, FB	80	Meilinger, LH-QB-?
34	Callahan, FB	81	Beatty, RE
35	Paolone, FB	82	Hennessey, LE
37	Walker, FB	83	Pack, LE
50	Adkins, C	84	Schnellenberger, LE
51	Strange, C	85	Mills, RE
54	Williams, C	86	Dedman, RE
55	Kuhn, C	87	Proffitt, RE
56	Kiefer, C	88	Holt, LE
60	Walton, LG	89	Zampino, LE

CHESTERFIELD
BEST FOR YOU

Choice of You
CHESTERFIELD

Chesterfield
CIGARETTES

FIRST WITH PREMI

Young America
CHESTERFIELD



PREMIUM QUALITY

TEXAS A & M

PROBABLE STARTING LINEUP

No.	Name	Position
84	ERIC MILLER	LE
78	LAWRENCE WINKLER . . .	LT
66	MARVIN TATE	LG
72	FRED BROUSSARD	C
65	SID THERIOT	RG
70	DURWOOD SCOTT	RT
86	BENNIE SINCLAIR	RE
11	DON ELLIS	QB
38	TOMMY STRAIT	LH
41	JOE BORING	RH
30	DON KACHTIK	FB

THE AGGIES SQUAD

11	Ellis, QB	58	Connell, C
12	Ritchey, QB	60	Barrett, G
14	Robbins, QB	64	Bass, G
15	Smith, QB	65	Theriot, G
20	Salyer, FB	66	Tate, G
21	Mayeaux, HB	69	Capt, G
22	Huddleston, HB	70	Scott, T
24	Petty, HB	72	Broussard, T
25	Kettler, HB	74	Parks, T
26	Watson, HB	75	Cavitt, T
30	Kachtik, FB	76	Powell, T
33	Wolf, FB	77	Teague, T
35	Easley, FB	78	Winkler, T
37	Hall, HB	79	Zuckero, T
38	Strait, E	80	Schroeder, E
39	Magouirk, HB	81	Robbins, E
41	Boring, HB	82	Kennon, E
44	Schero, HB	83	Clark, T
50	Wofford, C	84	Miller, E
53	Gosney, G	86	Sinclair, E
54	McCarley, C	87	Ohlendorf, T
55	Robbins, C	89	McGowan, E
56	McMahan, C	90	Vick, E
57	Greenhaw, C		

CHESTERFIELD
BEST FOR YOU

Laundry

Dry Cleaning

DeBoor

15 Per Cent Discount

and

Curb Service

AT

265 EUCLID AVE.
PHONE 3-0235

880 E. HIGH ST.
PHONE 2-7046

Time—Place—Occasion

Fashion meets the challenge with intriguing flattery in color and design.

This year of splendor . . . dictates a new magnificance in feminine attire.

You may choose wisely from our popular priced merchandise . . . Originals from our designer collection or imports.

Coats . . . Suits . . . Dresses . . . Separates . . . Bridal
Gowns . . . Accessories

at

Dial 4-1525

Dorothea Gaines
(INCORPORATED)

114 Esplanade

BAYNHAM'S

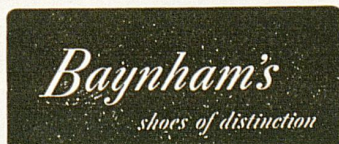
"Shoes of Distinction"

Nationally famous brands of quality shoes for —

WOMEN — Delman — Palizzio — Florsheim — Delmariette — Johansen — Red Cross — Capezio — Sandler — Penaljo

MEN — Florsheim — Freeman — French-Shriner — Bass Moccasins

CHILDREN — Simplex-Flexies — Buster Brown



Nashville
Louisville

133-35 East Main
Lexington

Cincinnati
Paducah



AL ZAMPINO
Junior — End
Philadelphia, Pa.



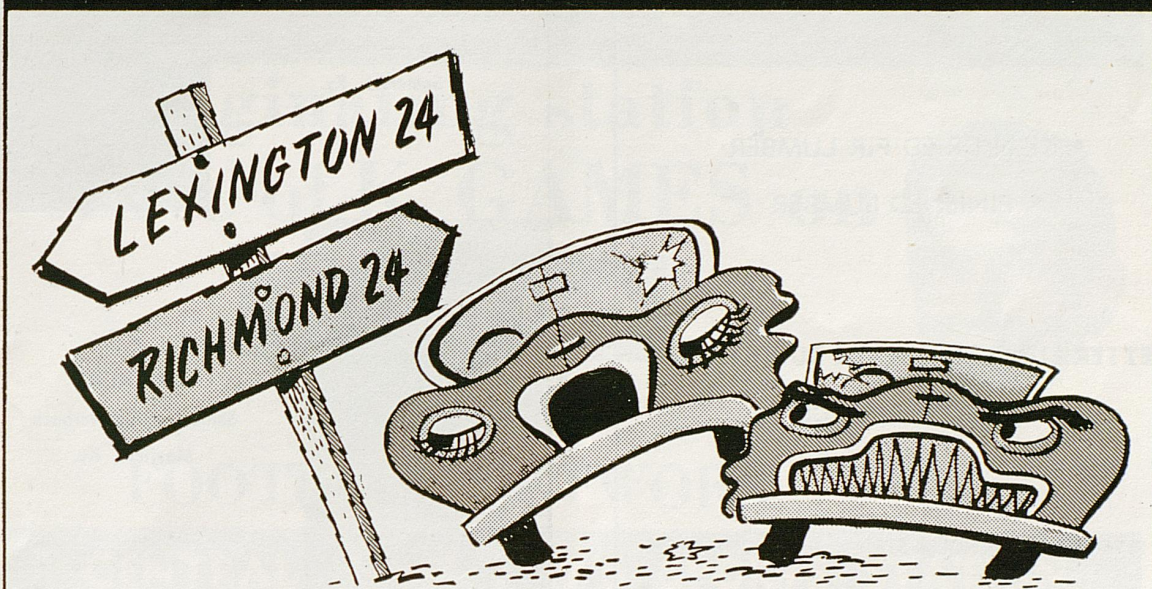
LARRY HENNESSEY
Junior — End
Paris, Ky.

FOR COMPLETE REPORTS ON THIS GAME AND OTHERS BEING PLAYED TODAY, READ THE SPORTS SECTION OF SUNDAY HERALD-LEADER

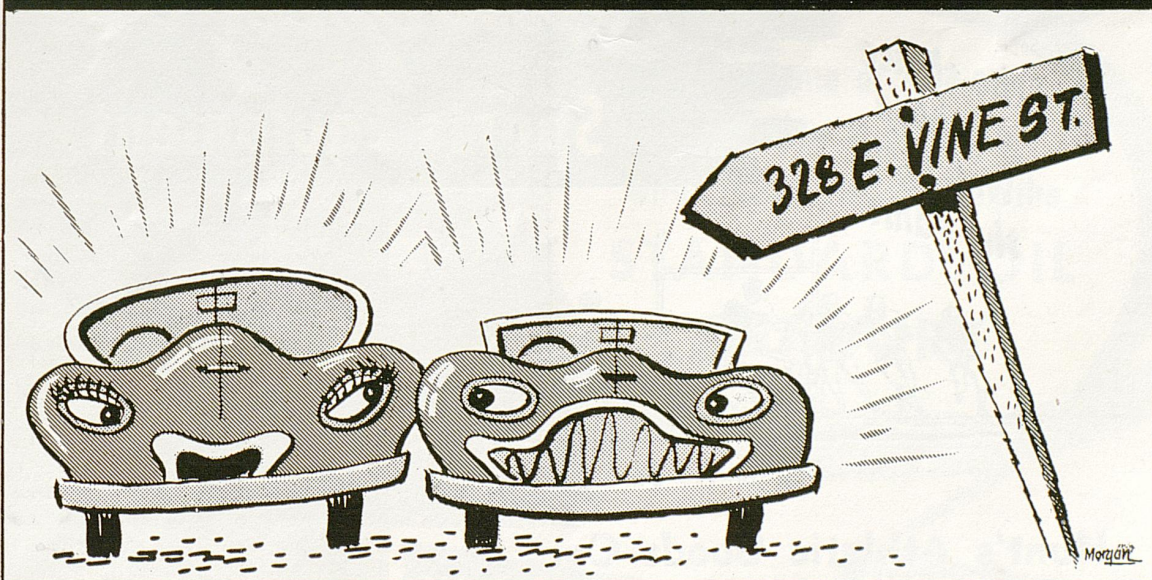
1953 KENTUCKY VARSITY ROSTER

No.	Name	Class	Pos.	Age	Ht.	Wt.	Ltrs.	Hometown	High School	Coach
11	Dick Rushing, Jr.,	FB		20	6'	178	1	Camden, Ark.	Camden	Sam Coleman
14	Bob Hardy, Soph.,	QB		20	6'1"	180	0	Paducah, Ky.	Tilghman	Ralph McRight
16	Herb Hunt, Sr.,	QB		22	6'1"	165	2	Mayfield, Ky.	Mayfield	Red Herndon
17	Dick Shatto, Soph.,	QB		20	6'1"	190	1	Springfield, Ohio	Springfield Sr.	Jim MacDonald
18	Bob Bezuk, Jr.,	QB		24	5'9"	174	1	Ambridge, Pa.	Ambridge	Moe Robinstein
19	John Delmar Hughes, Fr.,	QB		18	6'1"	183	0	Prestonsburg, Ky.	Prestonsburg	Doc Ferrell
20	Henry George, Fr.,	LH		19	5'8"	160	0	Honolulu, Hawaii	Roosevelt	Edmund Vasconcellos
21	Ivan Curnutte, Fr.,	LH		17	5'7"	155	0	Ashland, Ky.	Ashland	Charley Eblen
22	Dick Moloney, Soph.,	RH		19	5'11"	170	1	Covington, Ky.	Dixie Heights	Rice Mountjoy
23	Lou Karibo, Jr.,	LH		21	5'8"	155	1	Louisville, Ky.	Flaget	Paul Miller
24	Lucky Brown, Soph.,	RH		20	6'1"	165	0	Beverly Hills, Calif.	Beverly Hills	Jack Morrow
25	Billy Mitchell, Fr.,	LH		18	6'2"	180	0	Georgetown, Ky.	Garth	Tom Green
26	Dick Mitchell, Jr.,	LH		23	5'8"	160	1	Somerset, Ky.	Somerset	William Clark
27	Otis Elliott, Fr.,	RH		19	5'10"	165	0	Mayfield, Ky.	Mayfield	Ray Mills
28	Bob Phillips, Soph.,	RH		19	5'10"	175	0	Pikeville, Ky.	Pikeville	Clayton Powers
29	Joe Platt, Sr.,	RH		22	5'11"	175	1	Kokomo, Ind.	Kokomo	Sam Troubaugh
31	Tom Fillion, Sr.,	FB		23	5'10"	180	2	Owensboro, Ky.	Owensboro	J. H. Johnson
32	Don Netoskie, Fr.,	RH		19	5'11"	170	0	Martinsburg, W. Va.	Martinsburg	J. C. Cobourn
33	Jack Hanley, Jr.,	FB		21	5'10"	175	1	Hartford, Conn.	Hartford	Loika Newell
34	Ray Callahan, Soph.,	FB		20	5'11"	182	0	Lebanon, Ky.	Lebanon	Charles Koloso
35	Ralph Paolone, Sr.,	FB		22	6'1"	205	1	New Castle, Pa.	New Castle	P. H. Bridenbaugh
37	Bobby Walker, Fr.,	FB		17	6'	182	0	Middlesboro, Ky.	Middlesboro	Warren Campbell
50	Tommy Adkins, Sr.,	C		21	6'1"	197	2	Corbin, Ky.	Corbin	Ossie Burch
51	Leo Strange, Soph.,	C		20	6'	195	1	Louisville, Ky.	Manual	Mike Basrak
54	Ken Williams, Soph.,	C		21	6'2"	175	0	Lebanon, Tenn.	Lebanon	Joe Basnic
55	Dave Kuhn, Fr.,	C		18	6'2"	210	0	Louisville, Ky.	Male	Nick Denes
56	Steve Kiefer, Fr.,	C		18	6'	195	0	Bellevue, Ky.	Bellevue	Ben Flora
60	Stanley Walton, Fr.,	LG		20	5'11"	195	0	Lexington, Ky.	Lafayette	Bill Schaffnit
61	Don Allen, Fr.,	RG		18	6'	220	0	Lynch, Ky.	Lynch	Sam Potter
62	Duke Curnutte, Soph.,	RG		20	5'10"	185	1	Ashland, Ky.	Ashland	Claiborne, Eblen
63	Joe Stuart, Soph.,	RG		19	6'1"	185	0	Horse Cave, Ky.	Caverna	Kenneth Sidwell
64	Gayle Rouse, Soph.,	LG		18	6'	180	0	Burlington, Ky.	Burlington	Ed Walton
65	Ray Correll, Sr.,	LG		22	6'1"	205	2	Somerset, Ky.	Somerset	William Clark
66	Joe Koch, Jr.,	RG		19	5'10"	182	1	Louisville, Ky.	St. Xavier	Ray Baer
67	Neil Lowry, Jr.,	LG		21	6'	192	1	Youngstown, Ohio	Ursuline	Tom Carey
68	Bob Bennett, Fr.,	RG		18	5'11"	205	0	Russell, Ky.	Russell	Fred Johnson
69	Dale Waite, Fr.,	RE		19	6'1"	185	0	Ludlow, Ky.	Ludlow	Paul Adams
70	J. T. Frankenberger, Fr.,	LT		18	6'4"	230	0	Louisville, Ky.	Flaget	Paul Miller
71	Jim Schenk, Sr.,	RT		22	6'1"	213	1	Newark, N. J.	Seton Hall Prep	Joe Kasberger
72	Bill Wheeler, Soph.,	RT		19	6'4"	195	1	Pikeville, Ky.	Pikeville	Clayton Powers
73	Jack Butler, Soph.,	LT		19	6'4"	207	0	Tompkinsville, Ky.	Tompkinsville	Darrell Carter
74	Frank Petett, Soph.,	LT		20	6'2"	180	0	Tompkinsville, Ky.	Tompkinsville	Darrell Carter
75	Ken Lutz, Soph.,	LT		19	6'4"	215	0	Louisville, Ky.	Manual	Mike Basrak
76	Arvon Bivin, Soph.,	LT		20	6'2"	197	0	Louisville, Ky.	Manual	Mike Basrak
77	Tom Harper, Sr.,	LT		23	6'3"	215	1	Madisonville, Ky.	Madisonville	Bill Welborn
79	Harry Kirk, Jr.,	RT		20	6'4"	195	2	Mt. Sterling, Ky.	Mt. Sterling	Tiny Jones
80	Steve Meilinger, Sr.,	LH		22	6'3"	220	2	Bethlehem, Pa.	Bethlehem	John Butler
81	Jerry Beatty, Soph.,	RE		21	6'	170	0	Paintsville, Ky.	Paintsville	Oran Teater
82	Larry Hennessey, Jr.,	LE		22	5'8"	170	2	Paris, Ky.	Paris	Dan Barr
83	Roger Pack, Fr.,	LE		18	6'1"	190	0	Jenkins, Ky.	Jenkins	Delmus Freeman
84	Howard Schnellberger, Soph.,	LE		19	6'2"	190	1	Louisville, Ky.	Flaget	Paul Miller
85	Bradley Mills, Soph.,	RE		19	6'2"	178	1	Lynch, Ky.	Lynch	Sam Potter
86	Bob Dedman, Fr.,	RE		19	6'	190	0	Lebanon, Tenn.	Lebanon	Joe Atkinson
87	Jim Proffitt, Sr.,	RE		21	6'2"	205	2	Louisville, Ky.	Manual	Mike Basrak
88	Bill Holt, Fr.,	LE		18	6'2"	175	0	Sturgis, Ky.	Sturgis	Ralph Horning
89	Al Zampino, Jr.,	LE		22	6'	185	2	Philadelphia, Pa.	Bok Tech	Joe Alford

THEY MET ON RICHMOND ROAD



AND FELL IN LOVE AT



L. R. COOKE'S BODY REPAIR SHOP

LEWIS LUMBER CO.

Incorporated

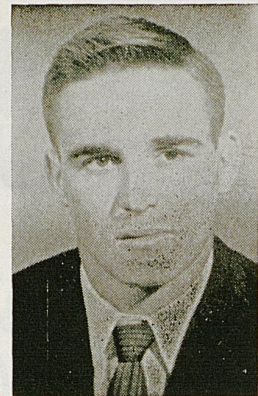
RETAIL LUMBER AND BUILDERS HARDWARE

- KILN DRIED FIR LUMBER
- FINISHED LUMBER

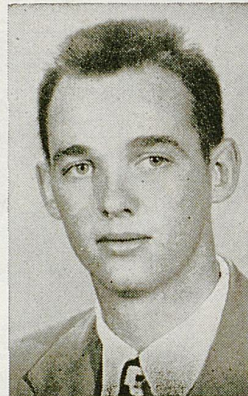
BETTER LUMBER BETTER BUILT HOMES
BETTER SERVICE

E. SEVENTH & MAGNOLIA STS.

PHONE 4-9720



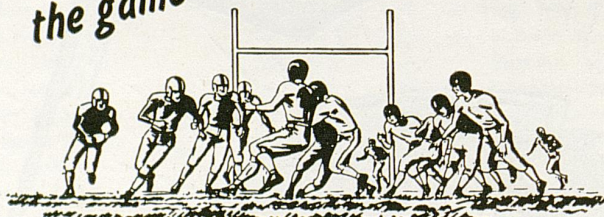
DICK MITCHELL
Junior — Halfback
Somerset, Ky.



HERB HUNT
Senior — Quarterback
Mayfield, Ky.

*"the choice
of those
who play
the game"*

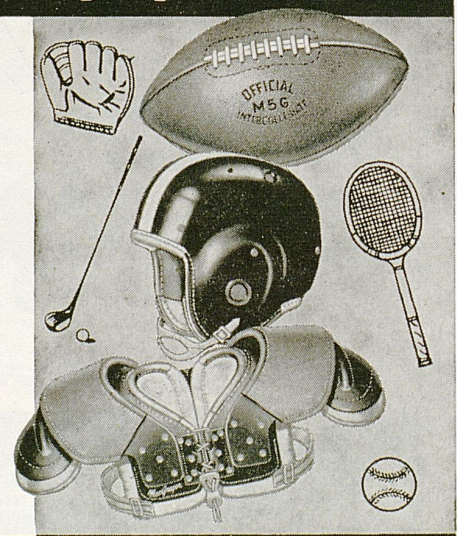
MacGregor[®] Sports Equipment



DISTRIBUTED BY

Hunt's Athletic Goods Co.
Mayfield, Ky.

"WE SHIP THE DAY YOU BUY"



SCORES OVER STOLL FIELD PUBLIC - ADDRESS SYSTEM COME TO
YOU THROUGH THE COURTESY OF THE LEXINGTON NEWSPAPERS

WV LK DIAL 590

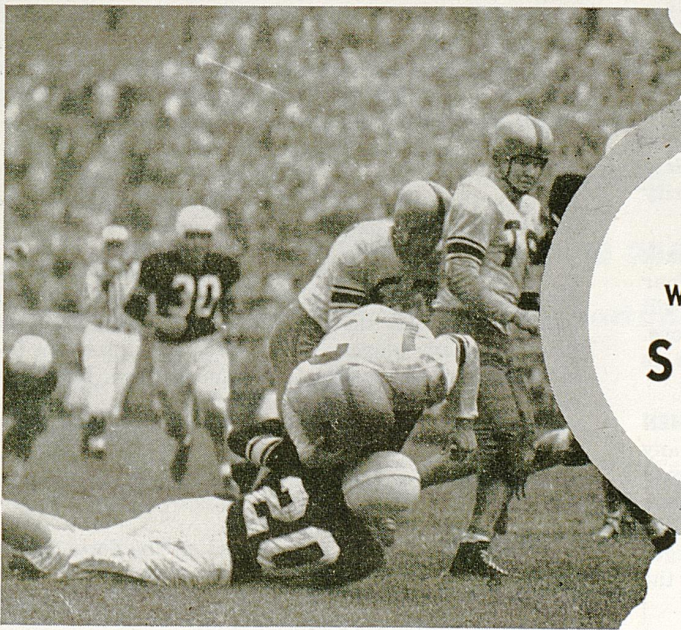
originating station
All U of K GAMES on



PLAY-BY-PLAY WITH
Claude Sullivan

FOOTBALL NETWORK

CENTRAL KENTUCKY'S SPORTS STATION



Brought to you by your
Standard Oil Dealer—



At Home or Away
Follow U of K
with CLAUDE SULLIVAN on the
**STANDARD OIL
NETWORK**

WKCT
BOWLING GREEN

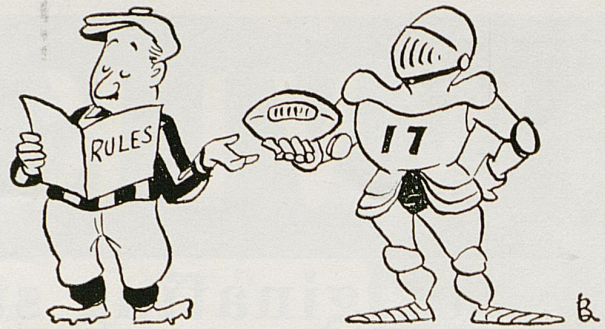
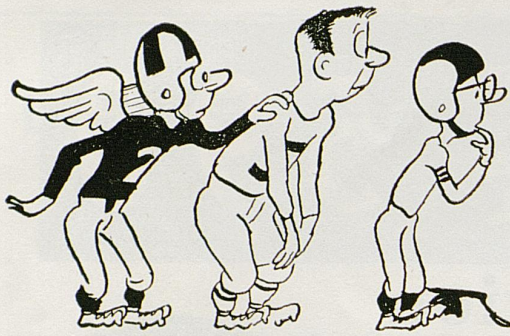
WAVE
LOUISVILLE

WPAD
PADUCAH

WVLK
LEXINGTON

WVJS
OWENSBORO

WPKE
PIKEVILLE



1953 FOOTBALL RULES CHANGES

by Charles W. Tucker, Jr.

This season will mark the beginning of a new era for college football which spells the doom of the "Two Platoon System" and will revive the old "Iron Man" elevens of the past.

For many years the Platoon system of football has been a highly controversial issue. The fans disliked it because it was impossible to know who was in the game with the steady flow of substitutes going in and out each time the ball changed hands. The small colleges didn't like it because it was an impossibility with a limited squad of players to compete with the larger colleges that had Offensive teams, Defensive teams, and Specialists in Passing, Punting, Place Kicking, etc.

The arguments for the Platoon system were that it gave a great many more boys the opportunity to play college football and it greatly reduced injuries since tired players could be rested while fresh players could be kept in the game at all times.

This year the Rules Committee of the National Collegiate Athletic Association has bowed to the will of the majority and the substitution rule will be as follows:

Any player withdrawn from the game may not go back in during the same quarter, except during the final four minutes of the second and fourth quarters. Coaches will be held responsible for the legality of these substitutions. Other changes which will be noticed this year are as follows:

1. REFEREE WILL NO LONGER TAKE TIME OUT WHEN TEAM "B" IS AWARDED A FIRST DOWN. Last year, any time team "B" was awarded a first down, the referee signaled time out, charged it to himself, and gave team "B" sufficient time to get its offensive team into the game. Under the new substitution rule this will no longer be necessary, so the clock will not be stopped by the referee when the ball changes hands.

2. TOUCHING A SCRIMMAGE KICK BY TEAM "A" PLAYER NO LONGER OFFSETS A FOUL BY TEAM "B" PLAYER. Although many spectators were never aware of it, if team "A" punted to team "B" and a team "A" player downed the ball before a team "B" player touched it, this was a foul by team "A". If on the same play, team "B" committed a foul, such as clipping, etc., the two fouls offset each other and the ball was kicked over again. This year it is not a foul for team "A" to touch the ball, and team "B" may take the ball at the spot of the touch-

ing. As in the past, if team "A" touches the ball, before it is touched by team "B", on or inside team "B's" 10-yard line, team "B" may take the ball at the spot or elect to take a touchback.

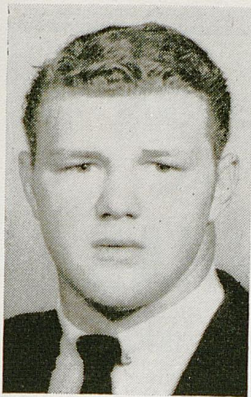
3. PENALTY FOR DEFENSIVE PASS INTERFERENCE INCLUDES FIRST DOWN. Last year if there was defensive pass interference in the field of play, team "A" was awarded the ball at the spot of the foul. If this spot was in advance of the forward ten-yard marker, a first down was awarded. If not, the down was repeated. This year team "A" will be awarded the ball at the spot of the foul and also a first down.

4. RULE COVERING TEAM MAKING A FALSE START STRENGTHENED. For a number of years there has been a rule penalizing a team for using a "False Start" which would tend to draw the other team offside. This "False Start" included any shift which simulated a play, feigning a charge, and any unusual variation in starting signals. This year the rule has been strengthened by the addition of the phrase "or any movement which simulates the beginning of a play."

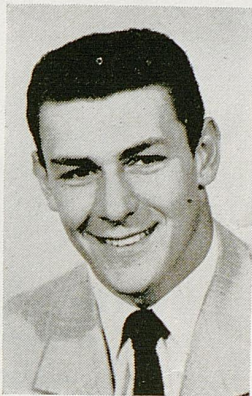
5. HIDEOUT PLAYS PROHIBITED ON THE DOWN IMMEDIATELY FOLLOWING A SUBSTITUTION. It is very easy to hide a play near the side line, after a substitution, as there are many players wearing the same uniform behind him and he appears to be among them. It is considered unsportsmanlike conduct for a team to use a "hideout play" in which a player who apparently had been replaced by a substitute, takes part. This year the rule has been rewritten and is more specific. It reads as follows:

A "hideout play" shall not be used on the down immediately following a substitution by either team. This violation will continue to be penalized under the Unsportsmanlike Conduct Rule.

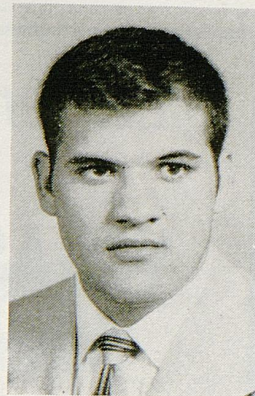
6. HANDING THE BALL FORWARD IN THE FIELD OF PLAY NOW INVOLVES LOSS OF DOWN AS WELL AS 5 YARD PENALTY. Under certain restrictions one Back may hand the ball forward to his teammate behind the line of scrimmage, but once the runner breaks into the open field, he cannot hand the ball forward. In the past, there was a 5-yard penalty from the spot of the foul. This year there will also be the loss of a down as well as a 5-yard penalty if the play started from scrimmage.



ARVON BIVIN
Sophomore — Tackle
Louisville, Ky.



RALPH PAOLONE
Senior — Fullback
New Castle, Pa.



DUKE CURNUTTE
Sophomore — Guard
Ashland, Ky.

Providing
Commercial Banking and Trust Service
We welcome the opportunity to serve you

Citizens Bank & Trust Company
Lexington, Kentucky

Member
Federal Deposit Insurance Corporation

"THE OFFICIAL WATCH FOR TIMING THIS GAME IS LONGINES—
THE WORLD'S MOST HONORED WATCH"

Listen
TO
WHAS
RADIO

Look
AT
WHAS
TELEVISION

for

Complete Sports Coverage

by the

WHAS Sports Team



PHIL SUTTERFIELD
Sportscaster



JIMMY FINEGAN
Sports Director

WHAS-TELEVISION

SPORTRAITS—6:00 p.m. (Monday through Friday)

PROFESSIONAL FOOTBALL — Telecast of outstanding pro clashes throughout the season, including the championship game.

UNIVERSITY OF KENTUCKY FOOTBALL FILMS

Every Sunday afternoon during the grid season, immediately following telecast of professional football games.

WHAS-RADIO

REPORT ON SPORTS—5:15 p.m. (Monday through Friday)

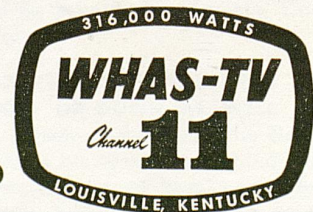
KENTUCKIANA SPORTS—10:15 p.m. (Monday Through Saturday)

U. OF K. FOOTBALL GAMES . . . all the games at game time.

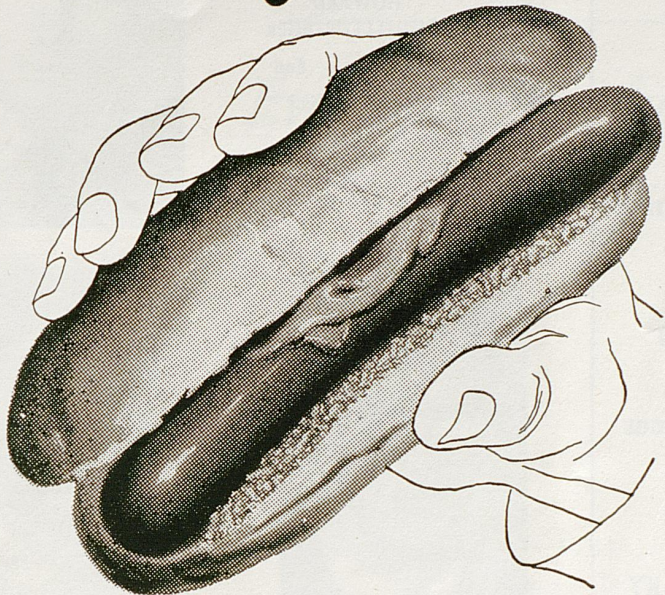
And

on both radio and television,
tune in

THE SATURDAY SCOREBOARD



Take a big juicy bite!

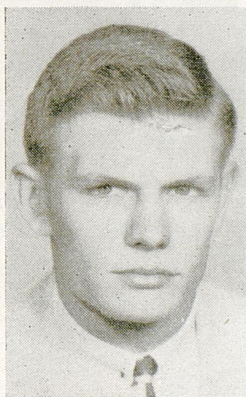


Franks

Made Fresh Daily of
Fine Beef and Pork in
a Nearby Armour
Kitchen



LOCKY BROWN
Sophomore — Halfback
Beverly Hills, Calif.



DICK SHATTO
Sophomore — Quarterback
Springfield, Ohio



RAY CALLAHAN
Sophomore — Fullback
Lebanon, Ky.

FOR COMPLETE REPORTS ON THIS GAME AND OTHERS BEING PLAYED
TODAY, READ THE SPORTS SECTION OF SUNDAY HERALD-LEADER

Perry Lumber Co.

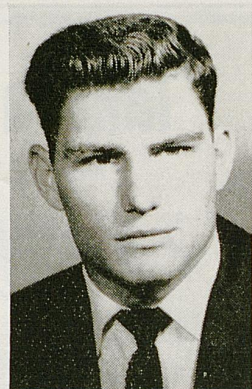
"Contractors & Builders"

- Lumber
- Hardware
- Builders Supplies
- Paint
- Roofing
- Sporting Goods
- Mill Work
- Appliances

———— Easy Parking ————

246 WALTON AVE.

LEXINGTON, KY.



HOWARD
SCHNELLENBERGER
Sophomore — End
Louisville, Ky.

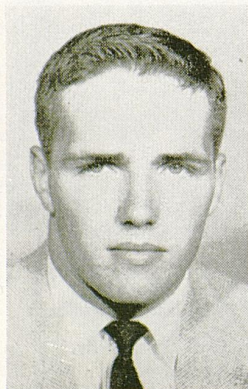


BILL WHEELER
Sophomore — Tackle
Pikeville, Ky.

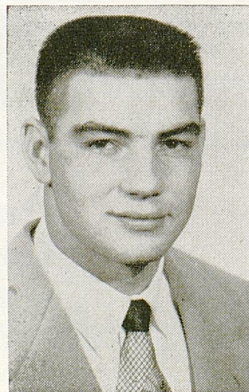


O. E. PHILPOT
Sophomore — Center
Lebanon, Tenn.

NEIL LOWRY
Junior — Guard
Youngstown, Ohio



DICK MOLONEY
Sophomore — Halfback
Covington, Ky.

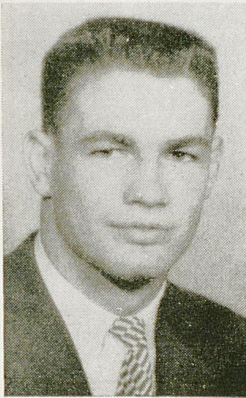


JERRY BEATTY
Sophomore — End
Paintsville, Ky.

SCORES OVER STOLL FIELD PUBLIC - ADDRESS SYSTEM COME TO YOU THROUGH THE COURTESY OF THE LEXINGTON NEWSPAPERS

Campus Book Store

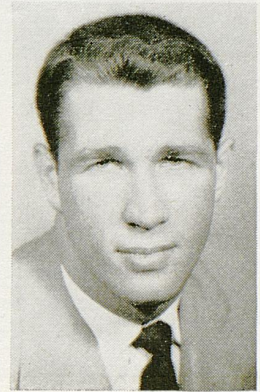
Everything for the Student



BRADLEY MILLS
Sophomore — End
Lynch, Ky.



JACK BUTLER
Sophomore — Tackle
Tompkinsville, Ky.



KEN WILLIAMS
Sophomore — Center
Lebanon, Tenn.

If your **GOAL** is "Fast Production — Fine Reproduction"
for your advertising, **RUSH** to the

LEXINGTON PHOTO-ENGRAVING CO.

231 W. SHORT STREET — TEL. 3-5015

Let us **TACKLE** your plate making to **END** your problems.
PASS them to our **CENTER** and you will **GUARD** against
a **KICK** in the final **RUN**.

FOR COMPLETE REPORTS ON THIS GAME AND OTHERS BEING PLAYED
TODAY, READ THE SPORTS SECTION OF SUNDAY HERALD-LEADER

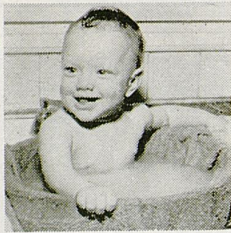
Demand The Best

Hughes Quality

ICE CREAM

For 50 Years Hughes Has Set the Standard for
Quality Ice Cream and Sherbets.

**INSIST ON THE BEST — STOCK UP ON HUGHES ICE CREAM AT YOUR
DEALERS TODAY**



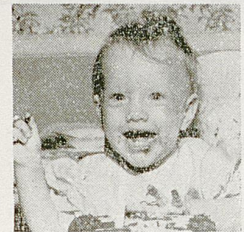
First Birthday

*Capture Those Treasured Moments
Record Baby's Progress With
Pictures By . . .*

Mack Hughes Studio

503-505 East High — Phone 2-6470

**MOST MODERN AND COMPLETE PHOTO COVERAGE
IN KENTUCKY**



Or Any Day

Now offering complete 16 mm motion picture coverage in sound for commercial, industrial, public relations, or television use. New processing unit makes possible delivery of sports film on same day of filming.

Acme Plaster & Supply Co.

Everything for the

PLASTERER — CONTRACTOR

BUILDER

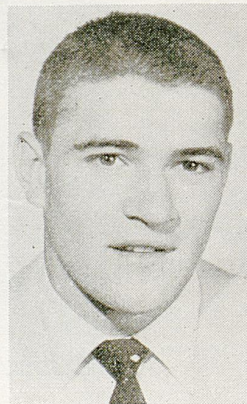
Brick — Plaster — Cement — Paint

Water Proofing Materials

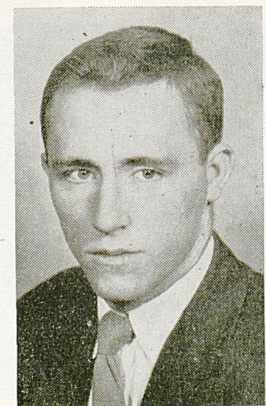
LEXINGTON, KY.

755 East Third

Phone 4-6805



BOB PHILLIPS
Sophomore — Halfback
Pikeville, Ky.



FRANK PETTITT
Sophomore — Tackle
Tompkinsville, Ky.

**SCORES OVER STOLL FIELD PUBLIC - ADDRESS SYSTEM COME TO
YOU THROUGH THE COURTESY OF THE LEXINGTON NEWSPAPERS**

LEXINGTON SALESMEN'S CLUB



Members of the Lexington Salesmen's Club shown above include (left to right): FRONT ROW — John Warrington, Jim King, James Bramble, Dick Page, Bob Bradley, Ben Patterson (President), and Larry Potts. Second Row — George Stanfill, Ed Inman, Ted Hunt, Bill Kleiser, Ed Abraham, George Daniels, Charlie Thompson, J. R. Hollingsworth, Jim Mundell, M. F. Prater, and Earl Crouch. THIRD ROW — O. T. Robinson, George Scott, Flem Clardy, Adolph Abraham, Morton Petrie, D. T. Baxter, Terry Grissom, Eppie Knight, Paul Bryant, and Edward Moores. FOURTH ROW — Bill Curry, Gordon Teidt, Charlie Weaver, Steve Rardin, Ellery Chase, Bob Crabtree, Thurman Measles, and Lewis Bush. LAST ROW — Jim Scully, Doug Burke, Dick Reddick, Ralph Karsner, Jr., George Metcalf, Aubrey Roberts, I. D. Nickles, and J. T. Reynolds.

One step in the far-reaching master plan to bring national football recognition to the University of Kentucky is the necessity of increasing the patronage at gridiron events to such an extent that major teams of the country may be profitably brought to Lexington as foes of the Wildcats.

The LEXINGTON SALESMEN'S CLUB deserves the sincere thanks of the University for their splendid co-operation toward achievement of this goal. This public-spirited group again this year voluntarily undertook the task of promoting the sale of season football tickets throughout the state and their efforts have contributed greatly to the best advance ticket sale in U.K. history.

The University of Kentucky Athletics Association also is grateful to the Bluegrass Council of the Boy Scouts of America for the community service they are rendering in ushering football fans to their seats at home games.

Taylor Tire Company

Incorporated

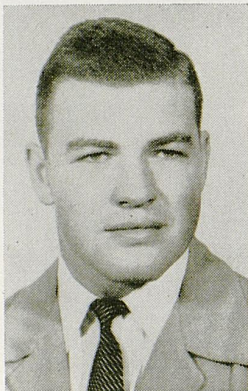
Tires — Batteries — Brakes — Clutch —
 Starter — Lights — Ignition — Wheel Alignment —
 Sales and Service



Vine at Southeastern

Phone 2-7127

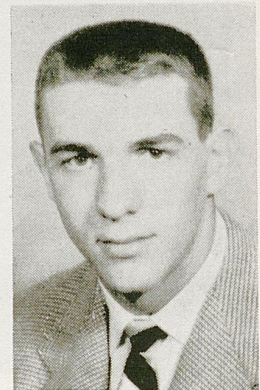
Lexington, Ky.



JIM SCHENK
 Senior — Tackle
 Newark, N. J.



GAYLE ROUSE
 Sophomore — Guard
 Burlington, Ky.



KEN LUTZ
 Sophomore — Tackle
 Louisville, Ky.



"Nobody Can
 Launder A Shirt
 Like Becker's"

5 LOCATIONS

401 N. B'dway Aurora & Walton

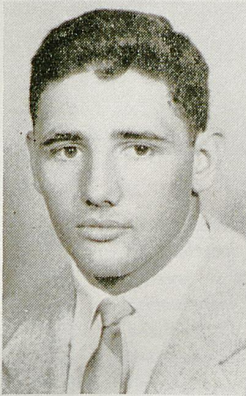


395 South Lime

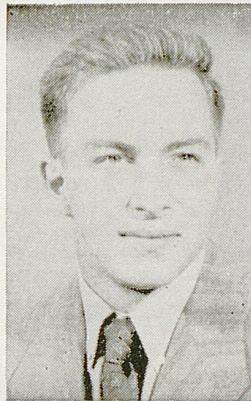
858 E. High

212 S. Lime

SCORES OVER STOLL FIELD PUBLIC - ADDRESS SYSTEM COME TO
 YOU THROUGH THE COURTESY OF THE LEXINGTON NEWSPAPERS



JOE STUART
Sophomore — Guard
Horse Cave, Ky.



JACK HANLEY
Junior — Guard
Hartford, Conn.

ONE STOP SHOPPING

With

A Lunch Counter and

Large Restaurant

McCRORY'S

5-10-25

STORE

Phoenix Hotel Building
Lexington, Kentucky

Hargett
Construction Co.
INCORPORATED

General Contractors

Phone 2-2992

113 Walton Avenue

Lexington, Ky.

ON, ON U. OF K.

On, on U. of K.
We are right for the fight today,
Hold that ball and hit that line;
Every Wildcat star will shine;
We'll fight, fight, fight
for the Blue and White,
As we roll to that goal, Varsity.
And we'll kick, pass and run,
'till the battle is won,
And we'll bring home the victory!

FOR COMPLETE REPORTS ON THIS GAME AND OTHERS BEING PLAYED
TODAY, READ THE SPORTS SECTION OF SUNDAY HERALD-LEADER

Good Luck and Good Wishes To The WILDCATS

In Frankfort
MAIN STREET
 (opposite Capitol Theatre)

In Richmond
205 WEST MAIN

In Lexington
MAIN & LIME

For Gifts of the Unusual
 Visit the
PHOENIX GIFT SHOP
 Phoenix Hotel
 and
CAMPBELL HOUSE

Kessler Jewelers, located at Main and Limestone in Lexington, and with convenient downtown locations in Frankfort and Richmond, offers you the finest in jewelry, watches, pens, and guarantees every item of merchandise you purchase from any Kessler Jewelry Store. Personalized jewelry is a Kessler specialty, jewelry which matches your personality, and is designed with you in mind. Make all of your jewelry purchases the friendly, and economical Kessler way. Diamonds our specialty.



FRANKFORT — LEXINGTON — RICHMOND

1953 FOOTBALL SCHEDULE

KENTUCKY
 Versus

- *Texas A&M Sept. 19
- Ole Miss Sept. 26
- *Florida Oct. 3
- L. S. U. Oct. 10
- *Mississippi State Oct. 17
- *Villanova Oct. 24
- Rice Oct. 31
- Vanderbilt Nov. 7
- *Memphis State Nov. 14
- *Tennessee Nov. 21
- *Home Games



* *AFTER THE GAME*
or any time

COMING

All the Leading Bands
of the Nation

HOME
OF
KENTUCKY'S
FINEST
BANDS
AND
NAME
BANDS
OF
THE
NATION



* *THE Showplace of the Bluegrass*

CAMEL

America's most popular cigarette!



*So Mild -
So Flavorful!*