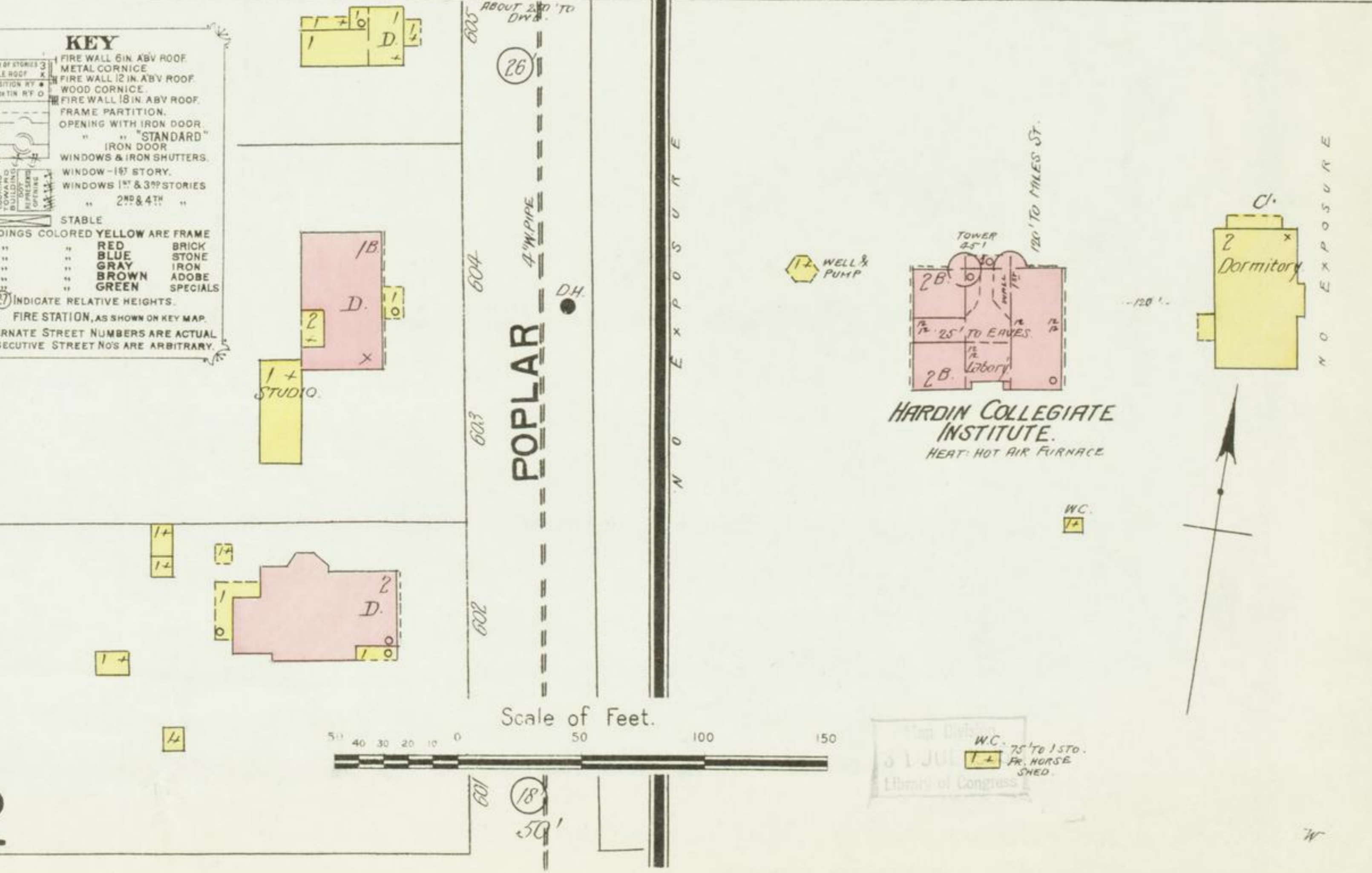
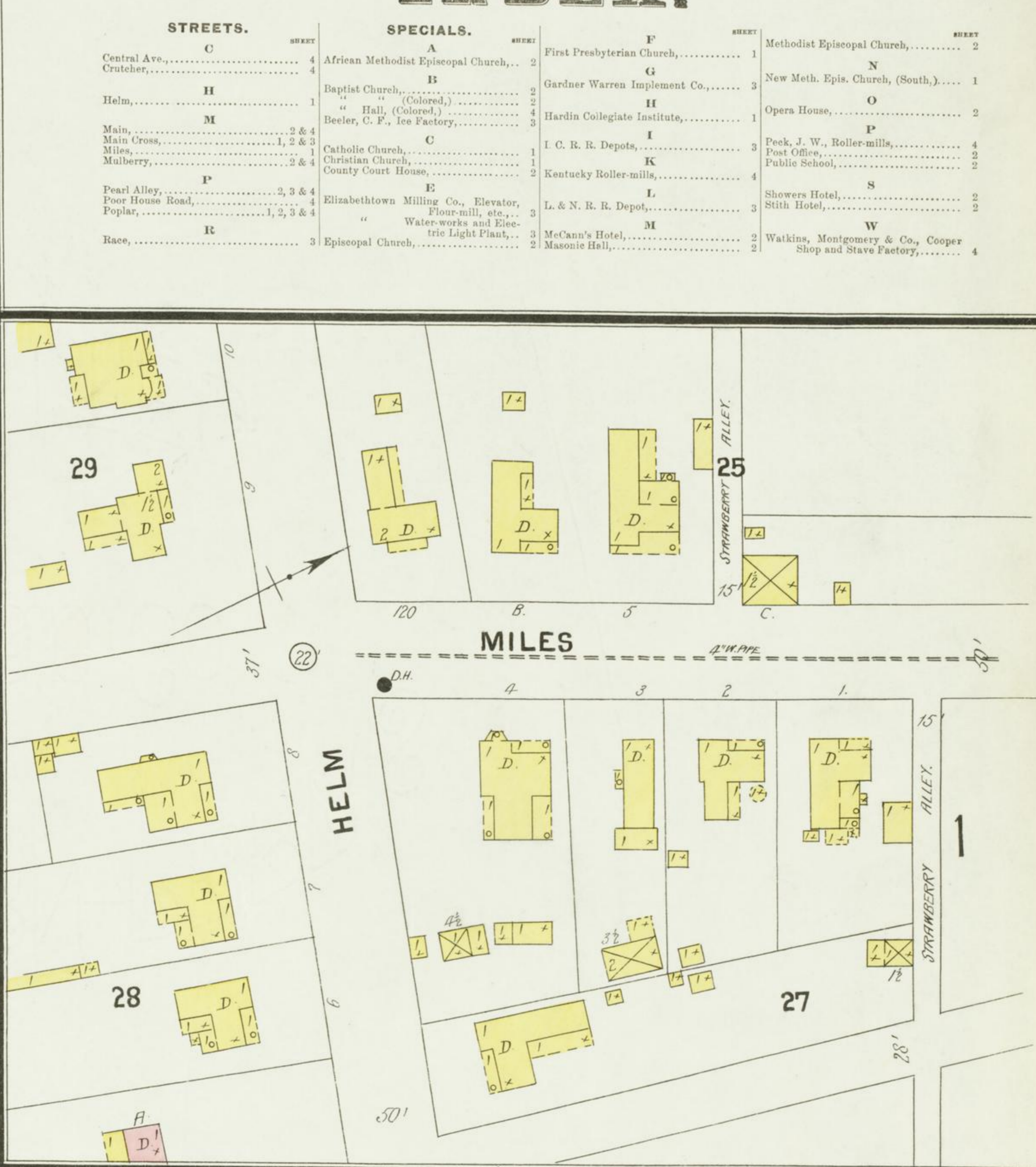
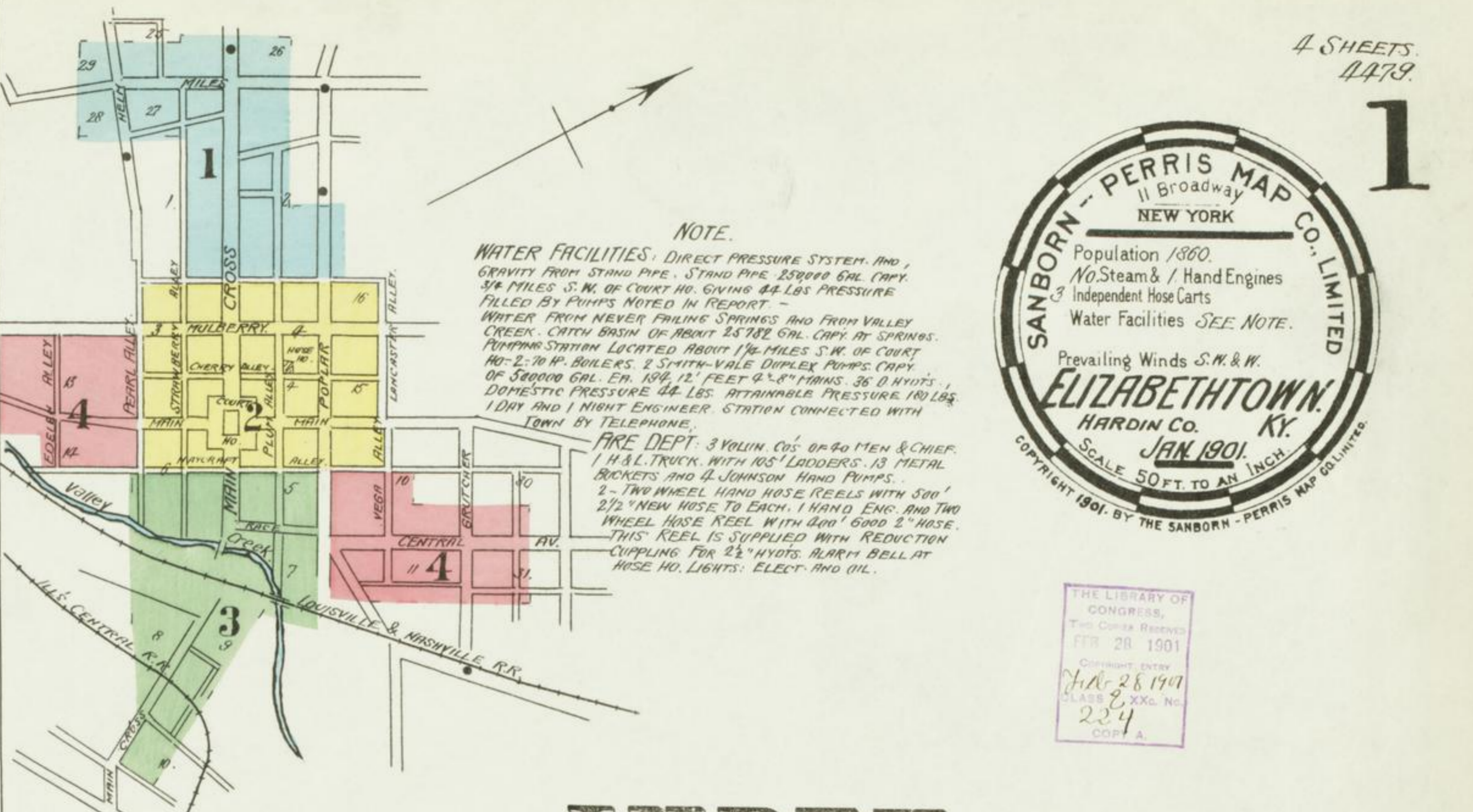
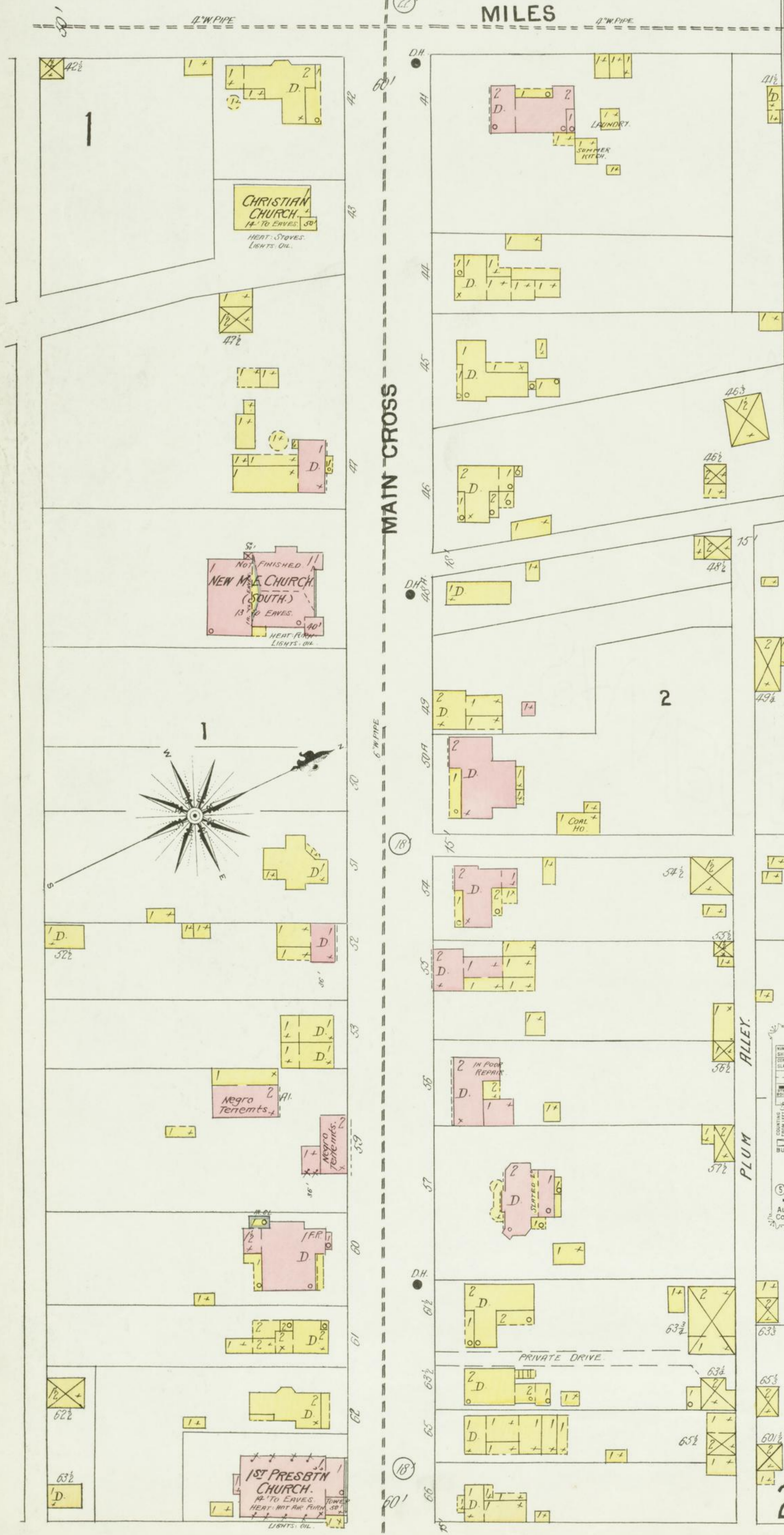
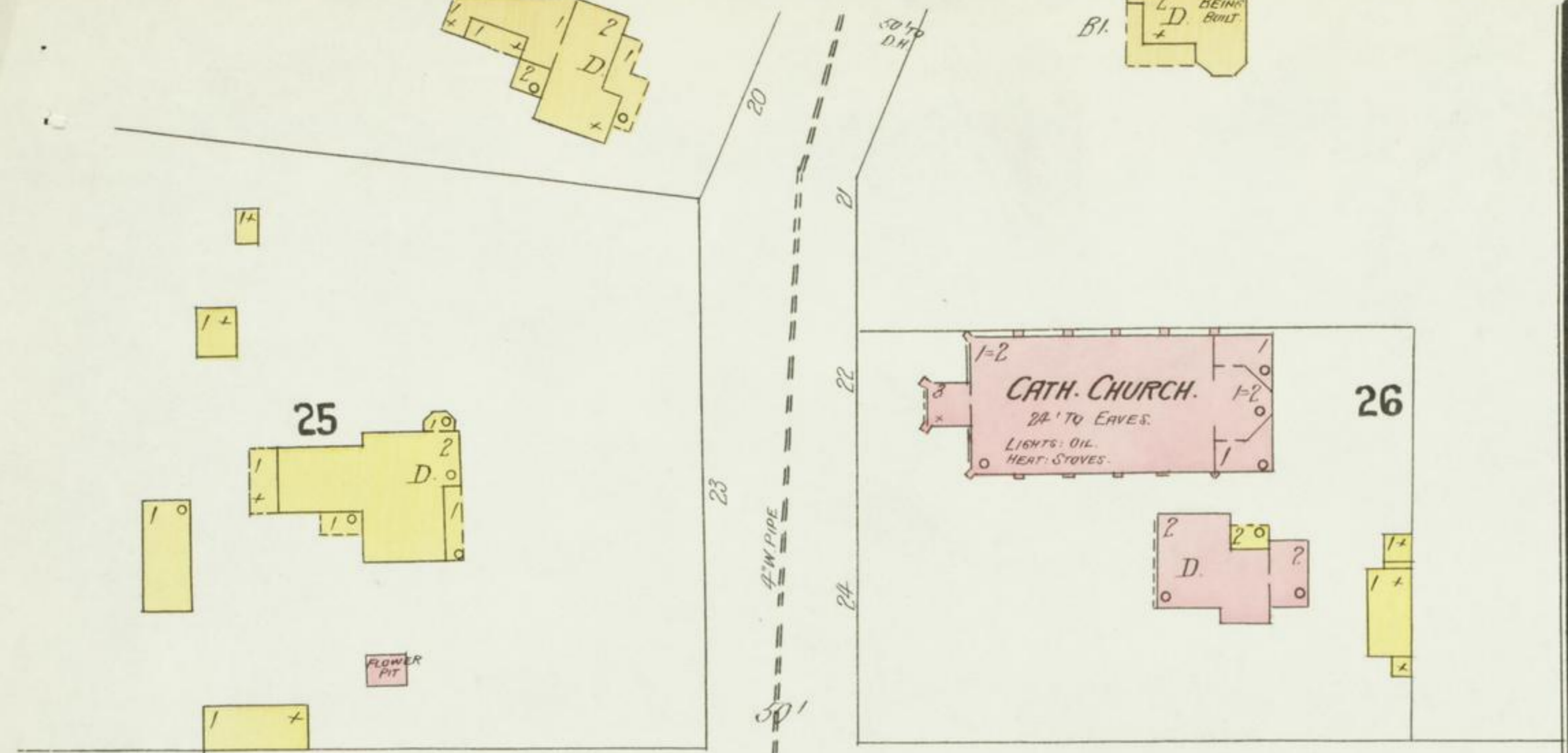


THE LIBRARY OF CONGRESS
 THE GEORGE BRIDGES
 FEB 28 1901
 Copyright 1891
 JAN 28 1891
 CLASS 2 XXX No.
 234
 COP. A

NOTE.
WATER FACILITIES: DIRECT PRESSURE SYSTEM AND GRAVITY FROM STAND PIPE - STAND PIPE 25000 GAL CAPTY. 3/4 MILES S.W. OF COURT HO. GIVING 44 LBS PRESSURE FILLED BY PUMPS NOTED IN REPORT - WATER FROM NEVER FAILING SPRINGS AND FROM VALLEY CREEK. CATCH BASIN OF ABOUT 25000 GAL CAPTY. OF SPRINGS PUMPING STATION LOCATED ABOUT 1/2 MILES S.W. OF COURT HO. - 20 H.P. BOLLERS. 2 3/4 IN. VALE DUPLEX PUMPS CAPTY. OF 50000 GAL. EN. 100' FEET 2 1/2" PUMPS. 26 0 WHIRLS. DOMESTIC PRESSURE 44 LBS. ATTAINABLE PRESSURE 140 LBS. 1 DAY AND 1 NIGHT ENGINEER STATION CONNECTED WITH TOWN BY TELEPHONE.
FIRE DEPT. 3 VOLUN. CO. 60 MEN & CHIEF. 1 H.A.L. TRUCK WITH 85' LADDERS. 13 METAL BUCKETS AND 4 JOHNSON HAND PUMPS. 2 - TWO WHEEL HAND HOSE REELS WITH 500' 2 1/2" HOSE TO EACH. 1 HAND ENR. AND TWO WHEEL HOSE KEEL WITH 100' 2" HOSE. THIS KEEL IS SUPPLIED WITH REDUCTION COUPLING FOR 2 1/2" HYDTS. BARRY BELL AT HOSE NO. LIGHTS: ELECT. AND OIL.

INDEX.

STREETS.	SPECIALS.	F	G	H	I	J	K	L	M
Central Ave. 4	African Methodist Episcopal Church, ... 2	First Presbyterian Church, ... 1	Gardner Warren Implement Co., ... 3	Hardin Collegiate Institute, ... 1	I. C. R. R. Depots, ... 3	County Court House, ... 2	Elizabethtown Milling Co., Elevator, Flour-mill, etc., ... 3	L. & N. R. R. Depot, ... 3	McCann's Hotel, ... 2
Crutcher, ... 4	Baptist Church, ... 2	Methodist Episcopal Church, ... 2	Hardin Collegiate Institute, ... 1	Opera House, ... 2	Peek, J. W., Roller-mills, ... 4	Episcopal Church, ... 2	Water-works and Electric Light Plant, ... 3	Showers Hotel, ... 2	Masonic Hall, ... 2
Helm, ... 1	" Hall, (Colored), ... 4	New Meth. Epis. Church, (South), ... 1	Public School, ... 2	Peek, J. W., Roller-mills, ... 4	Public School, ... 2	Episcopal Church, ... 2	Water-works and Electric Light Plant, ... 3	Stith Hotel, ... 2	Watkins, Montgomery & Co., Cooper Shop and Stave Factory, ... 4
Main, ... 2 & 4	Beeler, G. F., Ice Factory, ... 3	Opera House, ... 2	Peek, J. W., Roller-mills, ... 4	Public School, ... 2	Public School, ... 2	Episcopal Church, ... 2	Water-works and Electric Light Plant, ... 3	Showers Hotel, ... 2	Watkins, Montgomery & Co., Cooper Shop and Stave Factory, ... 4
Main Cross, ... 1, 2 & 3	Catholic Church, ... 1	Peek, J. W., Roller-mills, ... 4	Public School, ... 2	Public School, ... 2	Public School, ... 2	Episcopal Church, ... 2	Water-works and Electric Light Plant, ... 3	Showers Hotel, ... 2	Watkins, Montgomery & Co., Cooper Shop and Stave Factory, ... 4
Miles, ... 2 & 4	Christian Church, ... 1	Public School, ... 2	Public School, ... 2	Public School, ... 2	Public School, ... 2	Episcopal Church, ... 2	Water-works and Electric Light Plant, ... 3	Showers Hotel, ... 2	Watkins, Montgomery & Co., Cooper Shop and Stave Factory, ... 4
Mulberry, ... 2 & 4	County Court House, ... 2	Public School, ... 2	Public School, ... 2	Public School, ... 2	Public School, ... 2	Episcopal Church, ... 2	Water-works and Electric Light Plant, ... 3	Showers Hotel, ... 2	Watkins, Montgomery & Co., Cooper Shop and Stave Factory, ... 4
Pearl Alley, ... 2, 3 & 4	Elizabethtown Milling Co., Elevator, Flour-mill, etc., ... 3	Public School, ... 2	Public School, ... 2	Public School, ... 2	Public School, ... 2	Episcopal Church, ... 2	Water-works and Electric Light Plant, ... 3	Showers Hotel, ... 2	Watkins, Montgomery & Co., Cooper Shop and Stave Factory, ... 4
Poor House Road, ... 1, 2, 3 & 4	" Flour-mill, etc., ... 3	Public School, ... 2	Public School, ... 2	Public School, ... 2	Public School, ... 2	Episcopal Church, ... 2	Water-works and Electric Light Plant, ... 3	Showers Hotel, ... 2	Watkins, Montgomery & Co., Cooper Shop and Stave Factory, ... 4
Poplar, ... 1, 2, 3 & 4	Water-works and Electric Light Plant, ... 3	Public School, ... 2	Public School, ... 2	Public School, ... 2	Public School, ... 2	Episcopal Church, ... 2	Water-works and Electric Light Plant, ... 3	Showers Hotel, ... 2	Watkins, Montgomery & Co., Cooper Shop and Stave Factory, ... 4
Race, ... 3	Episcopal Church, ... 2	Public School, ... 2	Public School, ... 2	Public School, ... 2	Public School, ... 2	Episcopal Church, ... 2	Water-works and Electric Light Plant, ... 3	Showers Hotel, ... 2	Watkins, Montgomery & Co., Cooper Shop and Stave Factory, ... 4



KEY
 FIRE WALL ON ABV ROOF
 METAL CORNICE
 FIRE WALL IN ABV ROOF
 ROOF CORNICE
 FIRE WALL IN ABV ROOF
 FRAME PARTITION
 OPENING WITH IRON DOOR
 " STANDARD
 IRON DOOR
 WINDOWS & IRON SHUTTERS
 WINDOW - 1ST STORY
 WINDOWS 1ST & 2ND STORIES
 2ND & 4TH
 STABLE
 BUILDINGS COLORED YELLOW ARE FRAME
 RED BRICK
 BLUE STONE
 GRAY IRON
 BROWN ADOBE
 GREEN SPECIALS
 (3) INDICATE RELATIVE HEIGHTS
 FIRE STATION, AS SHOWN ON KEY MAP
 ALTERNATE STREET NUMBERS ARE ACTUAL
 CONSECUTIVE STREET NOS ARE ARBITRARY

Scale of Feet.
 0 10 20 30 40 50 100 150

W.C. 20' TO EAVES
 1 1/2\"/>