

OFFICIAL **25** PROGRAM



University Archives  
Margaret I. King Library - North  
University of Kentucky  
Lexington, Kentucky 40506



# KENTUCKY \* TENNESSEE

STOLL FIELD

NOVEMBER 24, 1945

*Lon Keaton*

# THE KENTUCKIAN

LEXINGTON'S NEWEST HOTEL

**You'll Find Your Visit To Our  
Hotel As Pleasing As A  
'Wildcat Victory'**

FRIENDLY, PERSONALIZED SERVICE  
RADIO, BATH AND ICE WATER IN EVERY ROOM

VISIT OUR NEW  
AIR CONDITIONED GRILL ROOM

T. H. HARDWICK & PAUL McBRAYER  
Managers

SUKY CIRCLE SERVING YOU



Dixie Ice Cream Co., Inc.

Lexington, Ky.

**FOOTBALL**  
**Kentucky**

*vs.*

**Tennessee**

**STOLL FIELD**

**Lexington, Kentucky**

**Saturday, November 24, 1945**

**2 P. M.**

Published by the Athletics Department of the University of  
Kentucky, Lexington, Kentucky

*The Front Cover was Designed and Printed by DON SPENCER COMPANY, INC., 271 Madison Ave., New York.*

**WILDCATS!**

**WE'RE WITH YOU ALL THE WAY**

Pride in the team increases our pride in the

University and we believe in both.

**First National Bank & Trust Company**

**LEXINGTON, KENTUCKY**

**Lexington's Oldest and Largest Bank**

Make Use of Our Convenient Drive-in Facilities

15 PER CENT DISCOUNT ON ALL CASH AND CARRY

*De Boer*

Laundry . . . Dry Cleaning

PHONE 2000

265 EUCLID AVE.

*The Phoenix Hotel*

Lexington, Kentucky

Where old and  
new friends meet  
during the Foot  
Ball Season

AIR CONDITIONED

Dining Room

Cocktail Lounge

NOW UNDER NEW MANAGEMENT

MARTIN A. NICHOLS,

Formerly of the Statler Hotel, Washington, D. C.

**CAMPUS BOOK STORE**

---

NEW AND USED TEXTBOOKS  
RECENT FICTION AND BIOGRAPHY  
REPRINTS INCLUDING MODERN  
LIBRARY  
DIETZGEN AND KEUFFEL AND  
ESSER ENGINEERING SUPPLIES  
SPALDING AND CHAMPION  
ATHLETIC EQUIPMENT  
MONTAG STATIONERY  
SHEAFFER FOUNTAIN PENS  
COMPLETE ART REQUIREMENTS




HON. SIMEON S. WILLIS

Governor of Kentucky

Compliments  
of  
**Bryan-Hunt Company**  
(Incorporated)  
WHOLESALE GROCERS  
Lexington, Kentucky

Compliments of  
**ADES-LEXINGTON DRY GOODS CO.**  
Lexington, Kentucky

Compliments of  
**GAIDRY MOTORS**  
MERCURY  LINCOLN  
255 E. Main Lexington, Ky.

**Kentucky Ignition Co., Inc.**  
"Distributors Automotive Equipment"  
Rose Street at Vine Lexington, Ky.  
PHONES 2681 - 2682 - 2683

MEET AFTER THE GAME  
AT  
**Rose Street Confectionery**  
351 ROSE STREET

**Skuller's**  
Lexington's Leading Jeweler and Silversmith  
115 W. Main St. Lexington, Ky.

**Wenneker's Sample Shoe Store**  
Famous Brands Sold Elsewhere \$7.50 to \$16.50  
Sold Here At \$2.95-\$3.95-\$4.95 Others to \$7.95  
153 E. Main St. Next to Strand Theatre

Compliments of  
**COOK'S FILLING STATION**  
Corner South Lime and Euclid

**Transylvania Printing Co.**  
(Incorporated)  
Printers — Stationers — Office Outfitters  
Parker — Sheaffer — Eversharp Fountain Pens  
Christmas Card Headquarters  
108 N. Upper St. Phones 34-35-36  
Established 1872

Official Photographers for 1945 Kentuckian  
All Kentuckian negatives on file at our studios.  
**Lafayette Studio**  
141-143 N. Lime Phone 6271

Compliments of  
**Fred Bryant Motor Co.**

Compliments of  
**LEET BROTHERS FURNITURE STORE**  
Main and Broadway



**PRESIDENT H. L. DONOVAN**  
University of Kentucky

*Complete Coverage  
of  
Kentucky Sports*



The Courier-Journal  
THE LOUISVILLE TIMES  
Radio Station WHAS

MEET AFTER THE GAME IN

*Canary  
Cottage*

AIR-CONDITIONED  
FOR YOUR  
COMFORT

128 E. MAIN

The South's Most Beautiful  
Cocktail Lounge . . . .

also

•Louisville

•Indianapolis

and

French Village Louisville

Cropper's Laundry

BEST WISHES FOR A

HAPPY SEASON FOR

WILDCAT PLAYERS AND FANS





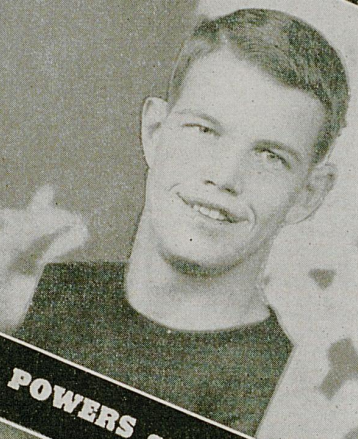
**BERNIE A. SHIVELY**  
**DIRECTOR OF ATHLETICS**  
University of Kentucky



**FIERING** end



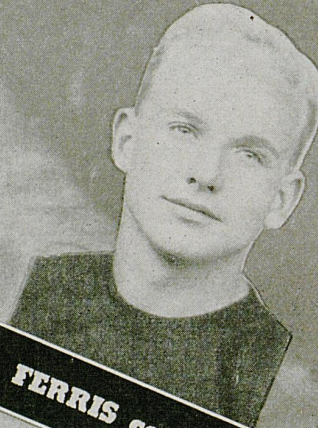
**SHANNON** tackle



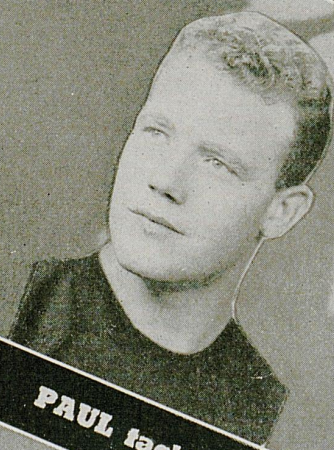
**POWERS** center



**McDONALD** center



**FERRIS** center



**PAUL** tackle



**ENGLISIS** tackle



**SERINI** tackle

# KENTUCKY



IN TODAY'S GAME  
**THE WILDCATS**  
 ARE WEARING  
**Mac GREGOR-GOLDSMITH**

(Incorporated)

*Preferred*  
TRADE MARK

**FOOTBALL EQUIPMENT**

Coaches, players and trainers of leading colleges and universities use and endorse Goldsmith athletic equipment. They know Goldsmith products represent the utmost in value and service.

Today, in the Armed Forces, in the Army, in the Navy, and in the Air Force, Goldsmith athletic equipment is doing its bit to make our men physically fit for the big job on hand.

There is Goldsmith equipment for every sport. The name "Goldsmith" has been a hallmark of quality for over 65 years.

**The Smith-Watkins Co.**

Distributors

236 E. Main St.

Lexington, Ky.

*Official timing watch for the*



**University of Kentucky vs. Tennessee**

*Longines*

*The World's Most Honored Watch*  
*winner of 10 world's fair grand prizes,*  
*28 gold medals, and more honors for*  
*accuracy than any other timepiece*



*Product of Longines-Wittnauer Watch Co.*

---



---

## KENTUCKY SQUAD

---

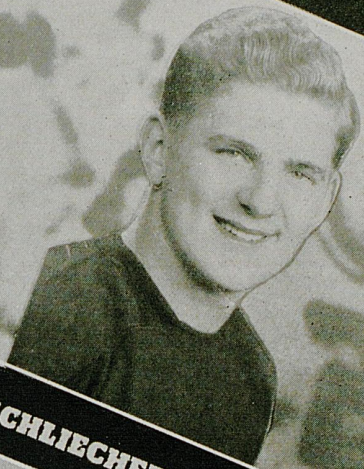
<i>No.</i>	<i>Name</i>	<i>Position</i>	<i>Year</i>	<i>Weight</i>	<i>Home Town</i>
6	McDonough, Bob	G	Freshman	165	Cincinnati, Ohio
8	Paul, Henry	T	Sophomore	225	Paducah, Ky.
11	Ray, Babe	B	Freshman	165	Louisville, Ky.
15	Ferris, Fred	C	Sophomore	175	Peoria, Ill.
16	Blanda, George	B	Freshman	190	Youngwood, Pa.
18	Burgard, Robert	E	Freshman	160	Kansas City, Mo.
20	Phillips, Hal	B	Freshman	170	Louisville, Ky.
21	Taylor, Hal	B	Freshman	170	Louisville, Ky.
23	Powers, Clayton Ed	C	Freshman	165	Frankfort, Ky.
24	Roberts,	B	Freshman	160	Lexington, Ky.
26	Pavolivich, Bernie	G	Freshman	180	Gary, Ind.
27	Jones, Wallace	E	Freshman	200	Harlan, Ky.
28	Wolf, Emanuel	E	Freshman	180	Brooklyn, N. Y.
29	Williams, Joe	B	Freshman	160	McKenzie, Tenn.
30	Weaver, Ike	E	Freshman	177	Williamson, W. Va.
31	Hensley, Dick	E	Freshman	195	Williamson, W. Va.
32	Manley, Leonard	E	Freshman	160	Ashland, Ky.
33	Granitz, Hartford	B	Freshman	177	Ambridge, Pa.
35	Feiring, Bob	E	Freshman	175	Kansas City, Mo.
36	McInturff, Wilford	G	Sophomore	202	Pineville, Ky.
37	Connet, Mel	G	Freshman	185	Kansas City, Mo.
38	Campbell, Kenton	E	Sophomore	195	Newark, Ohio
39	McDonald, Louis	C	Sophomore	200	Paducah, Ky.
40	Glass, Tom	B	Freshman	160	Georgetown, Ky.
42	Perkins, Norman	T	Freshman	190	Erlanger, Ky.
43	Englisis, Nick	T	Sophomore	212	Brooklyn, N. Y.
44	Yost, Roger	B	Sophomore	185	Kansas City, Mo.
46	Cordell, Cleo	C	Sophomore	200	Wheelright, Ky.
47	Shannon, Hugh	T	Sophomore	225	Huntington, W. Va.
48	Serini, Wash	T	Sophomore	225	Tuckahoe, N. Y.
50	Haas, Gene	G	Sophomore	186	Ironton, Ohio
51	Thomas, Hobey	B	Sophomore	165	Beaver Falls, Pa.
53	Smithson, Ben	G	Freshman	185	Hopkinsville, Ky.
55	Tunstill, Jesse	B	Junior	180	Paducah, Ky.
66	Chambers, Bill	B	Sophomore	165	Huntington, W. Va.
77	Barnett, Jim	B	Freshman	165	Huntington, W. Va.
99	Beal, Dick	B	Sophomore	175	Covington, Ky.

---

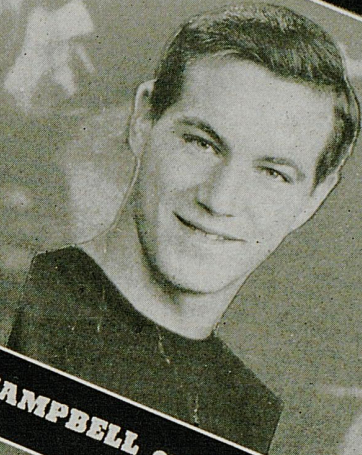


---

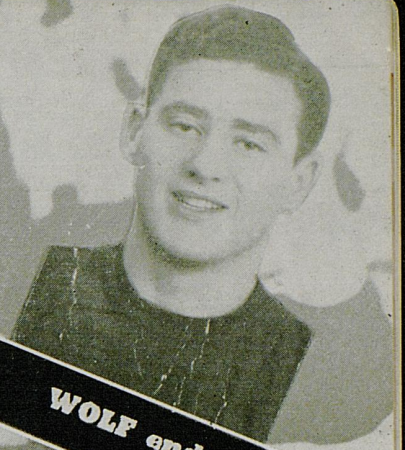
*"The Official Watch For Timing Today's Game Is LONGINES—THE WORLD'S MOST HONORED WATCH"*



**SCHLIECHER end**



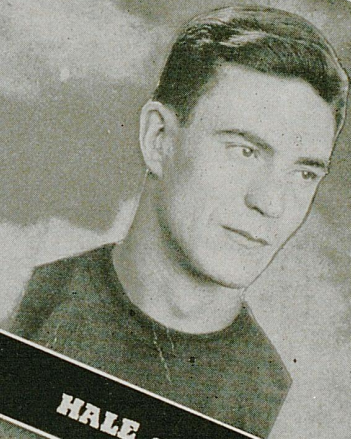
**CAMPBELL end**



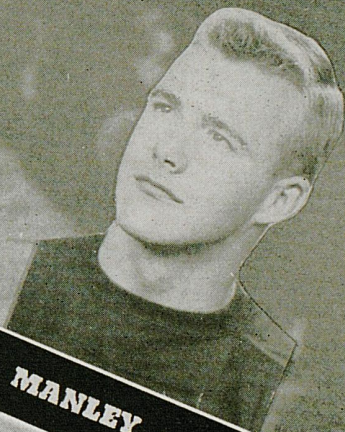
**WOLF end**



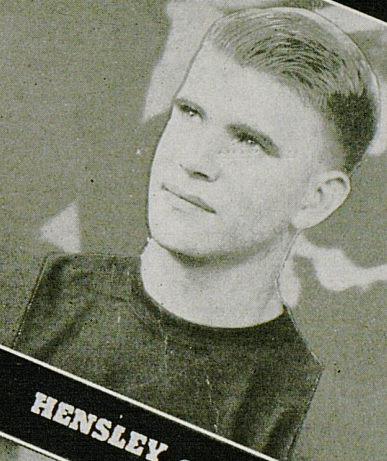
**HAAS guard**



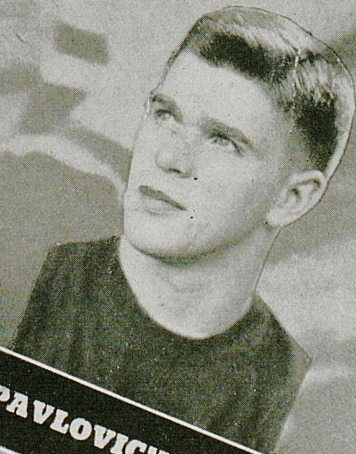
**HALE end**



**MANLEY end**



**HENSLEY end**



**PAVLOVICH guard**

# KENTUCKY

10

30

40

**A ALWAYS Milder**

**B BETTER TASTING**

### KENTUCKY

#### STARTING LINEUP

LE	LT	LG	C	RG	RT	RE
Jones	Paul	Serini	McDonald	Haas	Shannon	Hensley
			QB		<i>Paul</i>	
			Blanda			
	LH		FB			RH
	Chambers		Ray			Yost

*Tunstill*

#### SQUAD LIST

6 McDonough, g	28 Wolf, e	42 Perkins, t
8 Paul, t	29 Williams, b	43 Englis, t
11 Ray, b	30 Weaver, b	44 Yost, b
15 Ferris, c	31 Hensley, e	46 Cordell, c
16 Blanda, b	32 Manley, e	47 Shannon, t
18 Burgard, e	33 Granitz, b	48 Serini, g
20 Phillips, b	35 Feiring, e	50 Haas, g
21 Taylor, b	36 McInturff, g	51 Thomas, b
23 Powers, c	37 Connet, g	53 Smithson, g
24 Roberts, b	38 Campbell, e	55 Tunstill, b
26 Pavlovich, g	39 McDonald, c	66 Chambers, b
27 Jones, e	40 Glass, b	77 Barnett, b
		99 Beal, b

#### OFFICIALS

Buck Cheves—Georgia—Referee  
T. B. Amis—Ga. Tech—Umpire



**ALWAYS BUY CHESTERFIELD**

ER  
TING

**C COOLER  
SMOKING**

**FOR MORE  
SMOKING  
PLEASURE**

### TENNESSEE

#### PROBABLE LINEUP

LE	LT	LG	C <i>Miller</i>	RG	RT	RE
Wildman	Dobelstein	Browne	Morrow	Dobelstein	Paidousis	Pike
56	45	55	12	63	53	58

#### QB

Bevis (Capt.)

23

#### LH

Stephens

77

#### FB

Major

34

#### RH

Stephenson

30

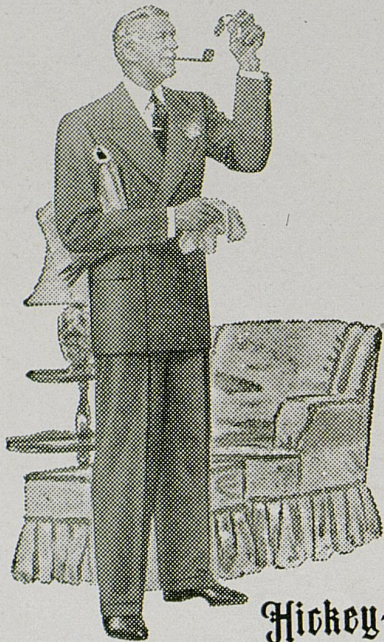
#### SQUAD LIST

10 Cross, e	30 Stephenson, b	51 Asbury, g
12 Morrow, c	31 McRee, g	52 Crain, g
13 Holsclaw, b	33 Bellis, e	53 Paidousis, t
14 Henegar, b	34 Major, b	54 Grissom, c
15 Walker, b	35 Manning, b	56 Wildman, e
16 Miller, c	37 Kesterson, t	57 Boyd, e
17 Bazemore, b	39 Wood, e	58 Pike, e
18 Lund, b	40 Shipley, c	59 Caldwell, e
20 Murray, t	41 Hampton, g	60 Blake, t
21 Bierley, b	42 Chadnock, g	63 B. Dobelstein, g
23 Bevis, b	43 McQuady, g	64 Carey, e
24 Arnold, b	44 Stanzak, b	65 Padgett, t
25 Walling, b	45 R. Dobelstein, t	66 Olafson, e
27 Nichols, b	47 Webber, t	67 Howard, g
28 Wade, b	48 Stewart, t	68 Cameron, c
29 Partin, b	50 Ashley, g	77 Stephens, b

#### OFFICIALS

George C. Gardner—Ga. Tech—Linesman  
Harry G. Mouat—Armour—Field Judge

**TESTERFIELD**



**Hickey-Freeman**  
CUSTOMIZED CLOTHES

## NOT TOMORROW But Soon!

That new HICKEY-FREEMAN suit you have been promising yourself may not be available tomorrow. But new HICKEY - FREEMAN suits will soon find their way back on our racks—more styleful, more impressive than ever. These fine Customized clothes are the wisest clothing investment today . . . and it only takes one HICKEY-FREEMAN to prove it!



O'Shea two-way stretch football pants, O'Shea award sweaters, Goldsmith football and basketball supplies, Converse basketball shoes and physical education items are very scarce. However, if you will contact us at once, maybe we can supply your school like we did the University of Kentucky this season with the above "Hard to Get" items.

**HUNT'S ATHLETIC GOODS CO.**

Phone No. 103

MAYFIELD, KENTUCKY

*"The Largest Independent Exclusive Athletic House In The South"*

## ATHLETIC EQUIPMENT

For Every Sport

WHOLESALE PRICES  
TO SCHOOLS AND COLLEGES

Write for Catalog

## The Sutcliffe Co.

Incorporated

LOUISVILLE, KY.





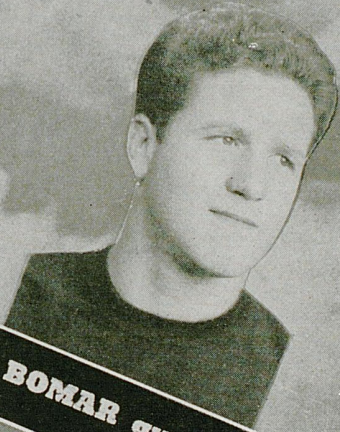
**TUNSTILL** back



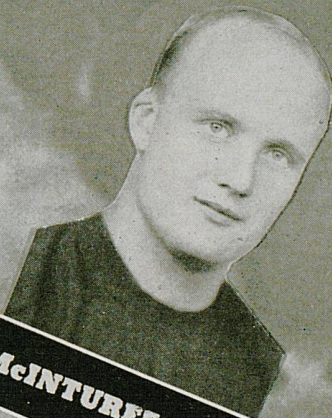
**SMITHSON** guard



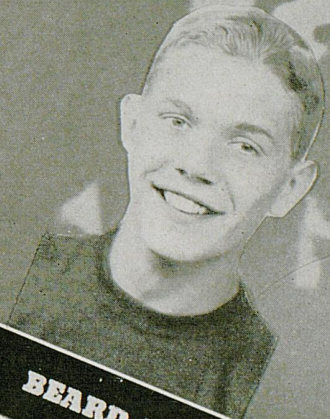
**CHAMBERS** back



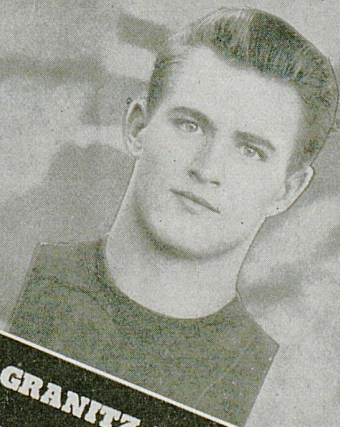
**BOMAR** guard



**McINTURFF** guard



**BEARD** back



**GRANITZ** back

# KENTUCKY



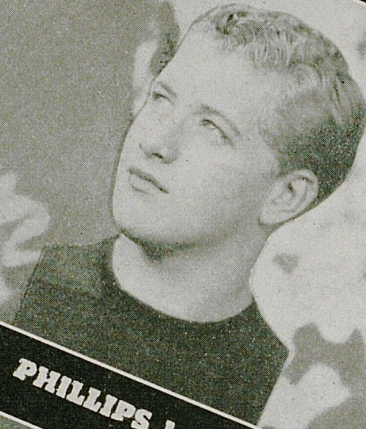
**WEAVER back**



**ROBERTS back**



**BARNETT back**



**PHILLIPS back**



**YOST back**



**PRICHARD back**



**RAY back**



**BEAL back**

# KENTUCKY

## TENNESSEE SQUAD

No.	Name	Position	Wt.	Ht.	Exp.
10	*Cross, Roy	End	185	6	3
12	*Morrow, Russell	Center	195	6 7 $\frac{1}{2}$	1
13	*Holsclaw, Claude	Back	155	5 10 $\frac{1}{2}$	1
14	Henegar, Reese	Back	183	5 10	0
15	Walker, Tommy	Back	168	5 10	0
16	*Miller, Ben	Center	187	5 11	1
17	Bazemore, Don	Back	178	5 9	0
18	Lund, Bob	Back	180	5 9	0
20	Murray, George	Tackle	212	6 2	1
21	Bierley, Chas.	Back	175	6 2	0
23	*Bevis, Billy (Capt.)	Back	185	5 9	3
24	Arnold, Red	Back	165	5 10	0
25	Walling, Bubba	Back	175	5 9	0
27	Nichols, Bill	Back	145	5 6	0
28	Wade, Jack	Back	185	5 8	0
29	Partin, Max	Back	185	6 3	2
30	*Stephenson, Casey	Back	182	6	3
31	McRee, Kennie	Guard	183	5 10	2
33	Bellis, Leonard	End	180	5 11	1
34	*Major, Mark	Back	180	5 11 $\frac{1}{2}$	1
35	*Manning, John	Back	170	5 9	1
37	Kesterson, Luther	Tackle	180	5 10	1
39	Wood, Carol	End	178	6 2	1
40	Shiple, Don	Center	175	5 10	0
41	Hampton, Henry	Guard	178	5 8	1
42	*Chadnock, John	Guard	185	5 8	1
43	McQuady, Claude	Guard	182	5 7	1
44	Stanzak, Ray	Back	175	5 10	1
45	*Dobelstein, Russ	Tackle	195	5 11	1
47	Webber, Don	Tackle	200	6 3	0
48	*Stewart, Bo	Tackle	205	6 2	1
50	Ashley, Ray	Guard	182	5 10	0
51	*Asbury, E. J.	Guard	185	5 10	2
52	Crain, Joe	Guard	200	5 11	0
53	*Paidousis, Mike	Tackle	208	5 10	1
54	Grissom, Bill	Center	195	6	0
56	*Wildman, Charles	End	190	5 11	1
57	Boyd, Gilbert	End	190	6	0
58	*Pike, Buddy	End	185	6 2	1
59	Caldwell, Chan	End	185	6 2	1
60	Blake, Tom	Tackle	190	6	0
63	*Dobelstein, Bob	Guard	200	5 11	3
64	Carey, Jack	End	190	5 11	0
65	Padgett, Bill	Tackle	208	6 2	0
66	Olafson, Bob	End	170	6	1
67	Howard, Ermal	Guard	180	5 9	1
68	Cameron, Hal	Center	190	5 11	0
77	*Stephens, Buster	Back	177	6	1

\*Letter Man

### KEITH'S, Inc.

129 EAST MAIN STREET

STEAKS - CHOPS - SEA FOODS

OUR SPECIALTY

# WHAT THE SIGNALS MEAN



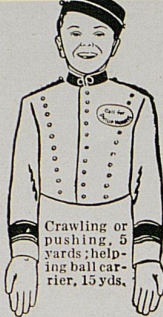
Holding. (Penalty—by offense, 15 yards; by defense, 5 yards.)



Offside or violation of kick-off formation. (Penalty, 5 yards.)



Illegal forward pass.



Crawling or pushing, 5 yards; helping ball carrier, 15 yds.



Score—touchdown, field goal, or conversion.



Unnecessary roughness, illegal defensive use of the hands, clipping, running into or roughing the kicker. (Penalty, 15 yards.)



Player illegally in motion. (Penalty, 5 yards. If from shift or huddle, 15 yards.)



Penalty refused, incomplete pass, missed field goal or conversion, both sides offside, etc.



Interference with forward pass. (If penalty on offense, when interference occurs beyond line of scrimmage, 15 yards and loss of down.)

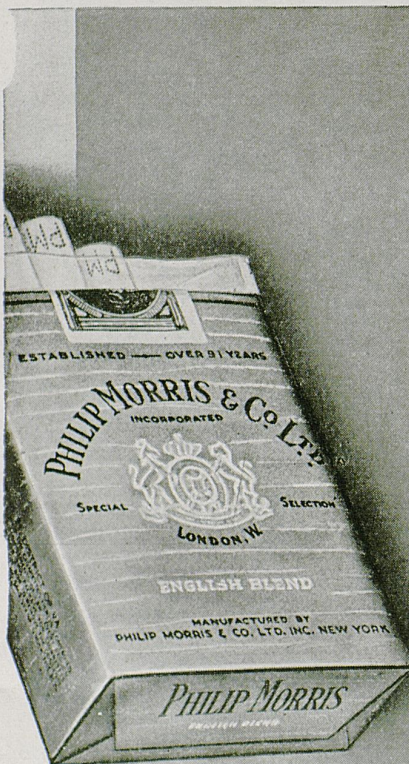


Safety.

Delay of game or extra time-outs. (Penalty, 5 yards.)



Time out.



## PHILIP MORRIS' SUPERIORITY RECOGNIZED

BY EMINENT MEDICAL AUTHORITIES!

This finer-tasting cigarette is also far more considerate of your nose and throat . . . scientifically proved far less irritating to the smoker's nose and throat! So—

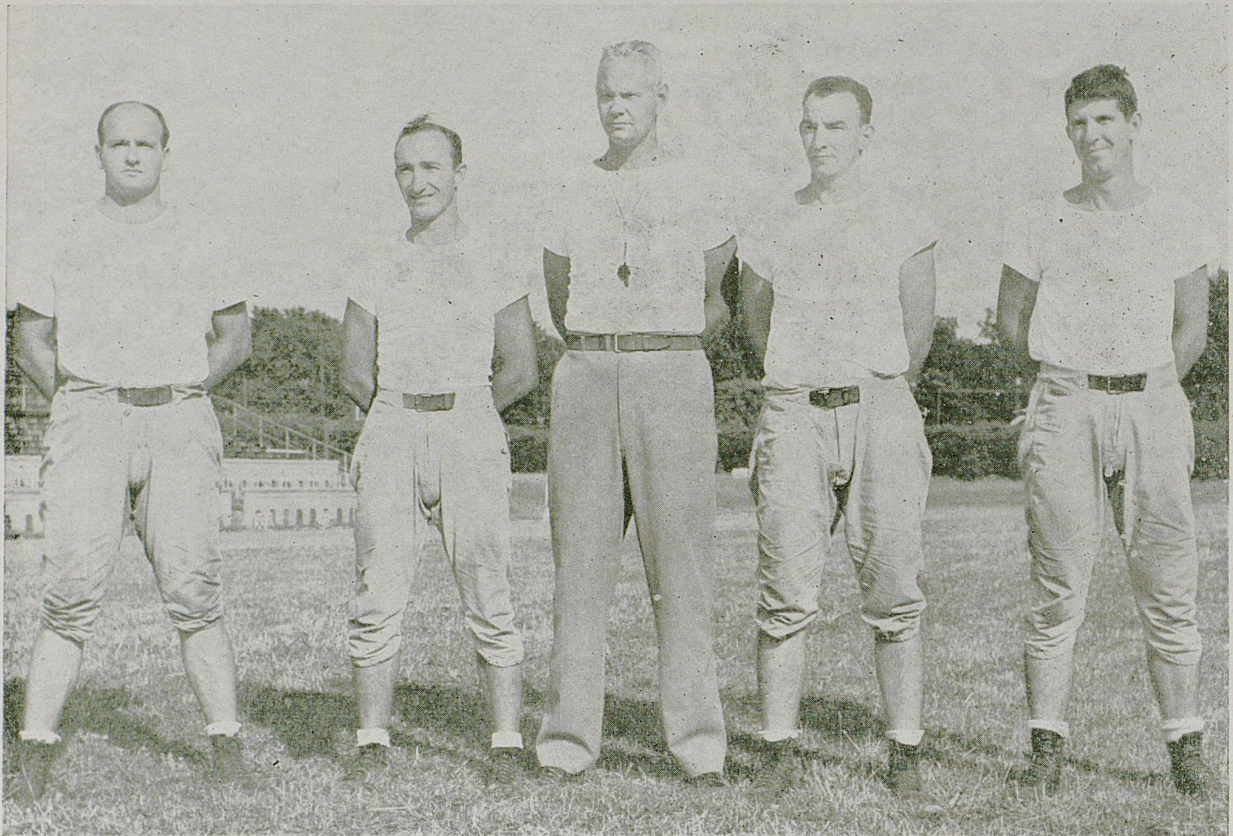
CALL FOR **PHILIP MORRIS**

America's *FINEST* Cigarette



JOHN H. BARNHILL  
Head Coach

## KENTUCKY COACHING STAFF



JACOBS, GILB, SHIVELY, BOSTICK, AND TAYLOR

Compliments

of

**R. S. THORPE & SONS**

125 E. MAIN STREET

Long Distance Phone L. D. 99  
City Phones 7760, 7761, 7762, 7763

**Wombwell Automotive  
Parts Company**

(Incorporated)

THE PARTS AND EQUIPMENT HOUSE

151-153-155 East Short Street

LEXINGTON, KENTUCKY

For PERFECT DRY CLEANING Phone 62

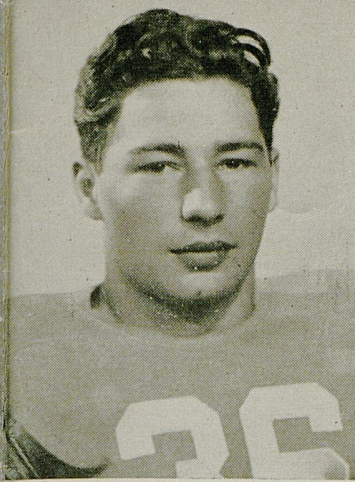
**Lexington Laundry Company**

**Union Transfer & Storage Co.**

MOVING AND STORAGE

Spring and Vine Streets

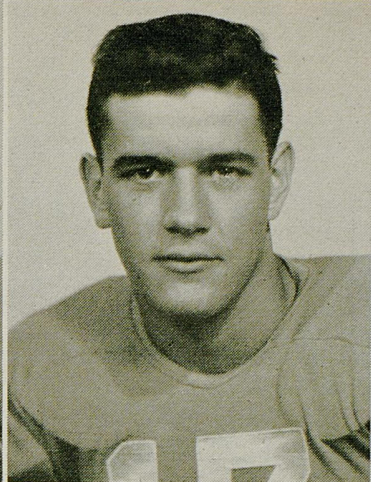
Phone 7030



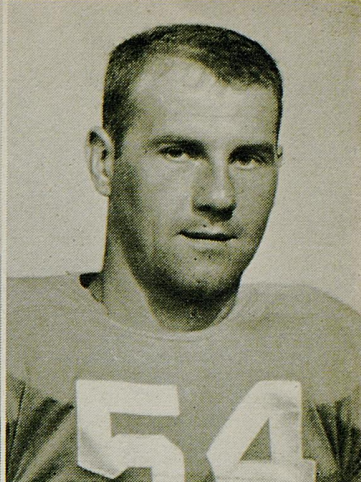
BOB LEWIS  
Back



LEONARD BELLIS  
End



DON BAZEMORE  
Back



BILL GRISSOM  
Center

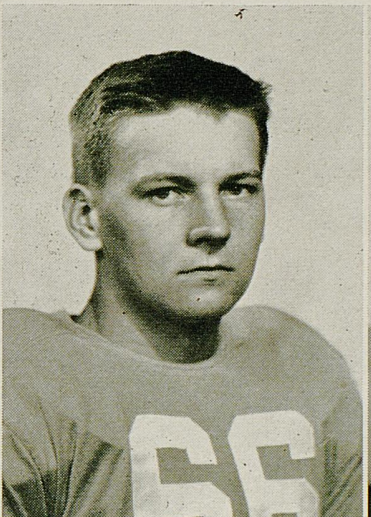
## TENNESSEE



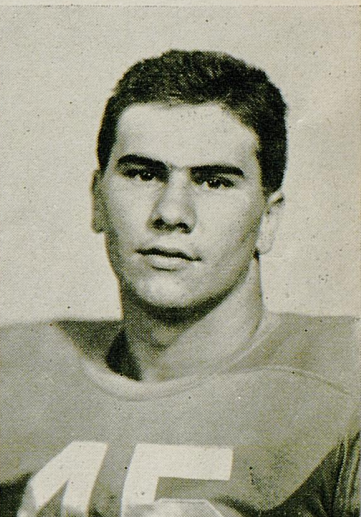
BILLY BEVIS, Capt.  
Back



CLAUDE HOLSCLAW  
Back



BOB OLAFSON  
End

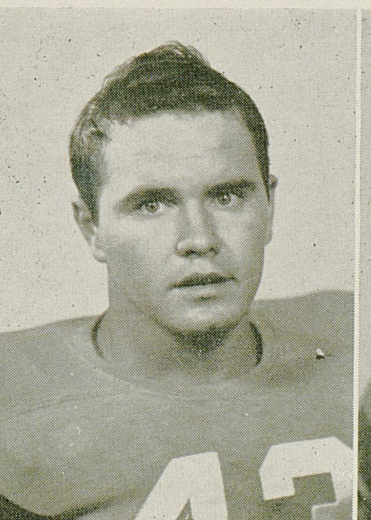


RUSS DOBELSTEIN  
Tackle

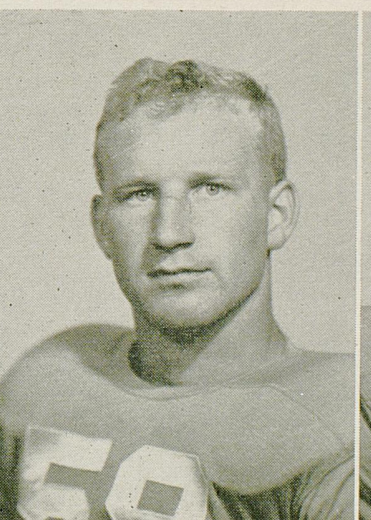
## VOLUNTEERS



BILL NICHOLS  
Back



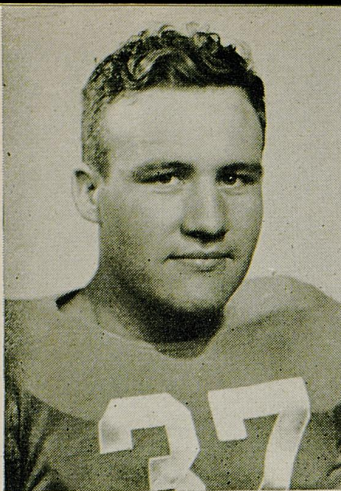
CLAUDE McQUADY  
Guard



BUDDY PIKE  
End



CHARLES WILDMAN  
End



LUTHER KESTERSON  
Tackle



BEN MILLER  
Center



ERMAL HOWARD  
Guard



BILL PADGETT  
Tackle

## TENNESSEE



MIKE PAIDOUSIS  
Tackle



BOB DOBELSTEIN  
Guard

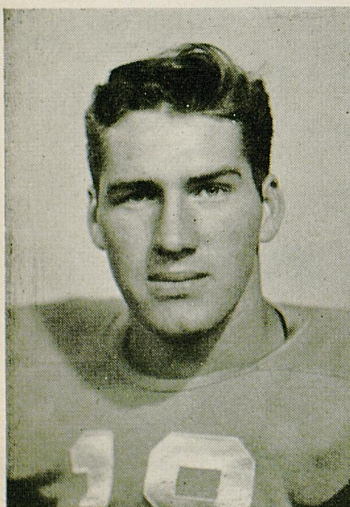


DON WEBBER  
Tackle

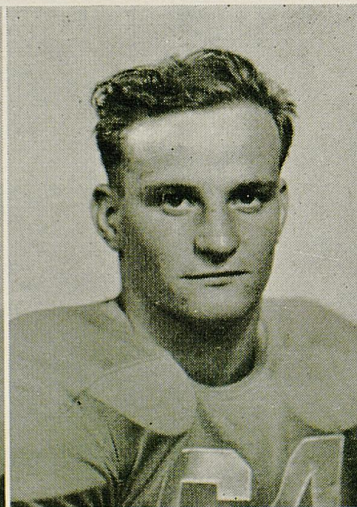


CAROL WOOD  
End

## VOLUNTEERS



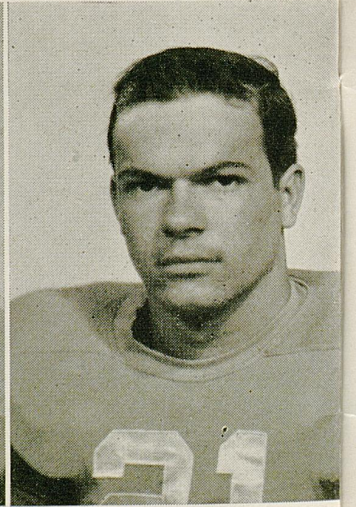
BOB LUND  
Back



JACK CAREY  
End



BUSTER STEPHENS  
Back



CHAS. BIERLEY  
Back





**TENNESSEE'S COACHING STAFF**

**FRONT ROW—Graves, Line Coach; Barnhill, Head Coach; Mauer, End Coach. BACK ROW—White, Assistant Line Coach; O'Brien, Trainer; Peel, Assistant Backfield Coach.**

## THE LAFAYETTE HOTEL

extends a cordial welcome and an invitation to the football fans to meet with us after the games—renew old friendships, greet new friends and enjoy the spirit of good fellowship that abounds.

Compliments of

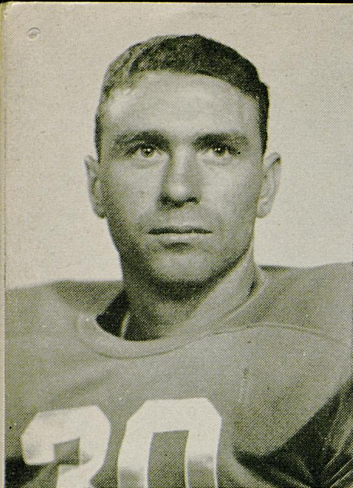
**J. P. WRIGHT and B. C. JONES**

COURTESY

**BANK OF COMMERCE**

Be Better Fitted in

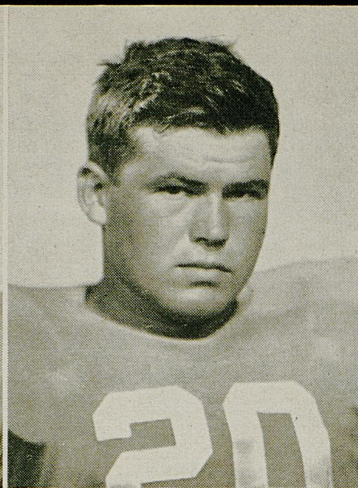
EXCLUSIVELY  
*Gaynham's*  
"SHOES OF DISTINCTION"



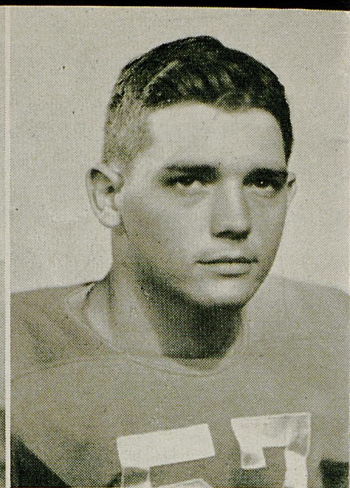
CASEY STEPHENSON  
Back



CHAN CALDWELL  
End

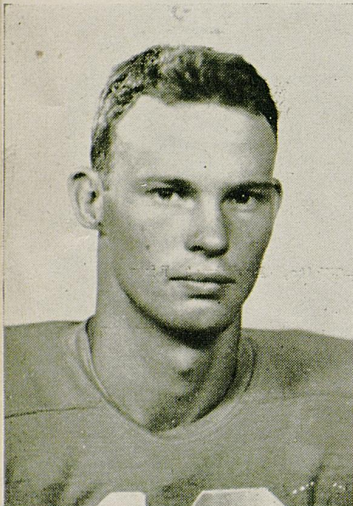


GEORGE MURRAY  
Tackle

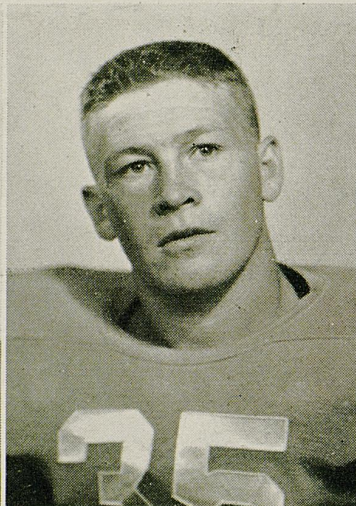


GILBERT BOYD  
End

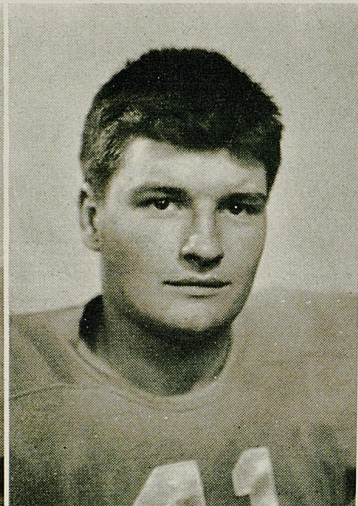
## TENNESSEE



RUSSELL MORROW  
Center



JOHN MANNING  
Back

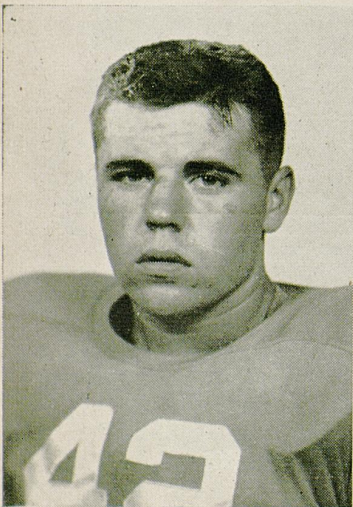


HENRY HAMPTON  
Guard

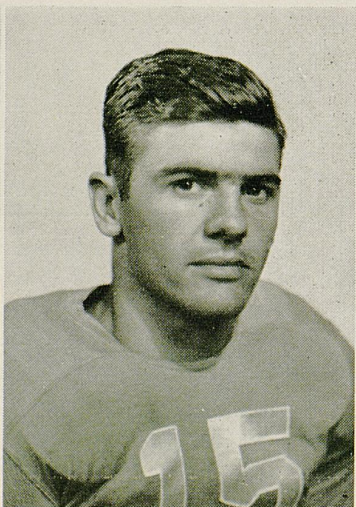


DON SHIPLEY  
Center

## VOLUNTEERS



JOHN CHADNOCK  
Guard



TOMMY WALKER  
Back



RAY STANZAK  
Back



TOM BLAKE  
Tackle

Let's All Meet at . . . . .

# Walgreen's

After The Game!

The winning play after the game is to head straight for Walgreen's for a really delicious treat. Whether your appetite signals for a refreshing soda or a complete dinner, you'll find exactly what you want, skillfully prepared and properly served. At any hour of the day or evening, you'll find Walgreen's the ideal place to eat.

### *Tempting Suggestions:*

**DOUBLE DIP CHOCOLATE SUNDAE**  
Rich, smooth, doubly-delicious!

**DELICIOUS DINNERS**  
A varied menu of favorite dishes!

**TASTY SANDWICHES**  
Every bite a real delight!

**DELIGHTFUL LUNCHEONS**  
A fine selection: nourishing, tasty!

**YOU'RE ALWAYS WELCOME AT WALGREEN'S**  
140 WEST MAIN STREET

Share The Fun Of  
Your  
Kodachrome Transparencies  
with

**BEAUTIFUL  
MINICOLOR PRINTS**

Three sizes are available. . .the popular size for overseas mailing is 2X (about 2¼ x 3¼ in.)

Place Your Orders Through Us.

**Tinder-Krauss-Tinder**

Opticians—Photographic Supplies

145 North Upper St. Phone 5080

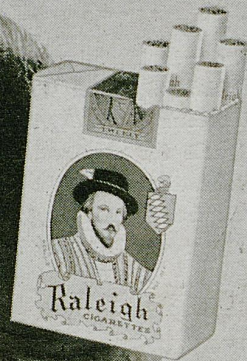
WHY BE IRRITATED?

—LIGHT AN  
**OLD GOLD**

Apple "Honey" helps guard O.Gs.  
from Cigarette Dryness

ARMY  
Old Gold CIGARETTES  
OLD GOLD

PLAIN OR TIPPED  
UNION MADE



# Raleigh