

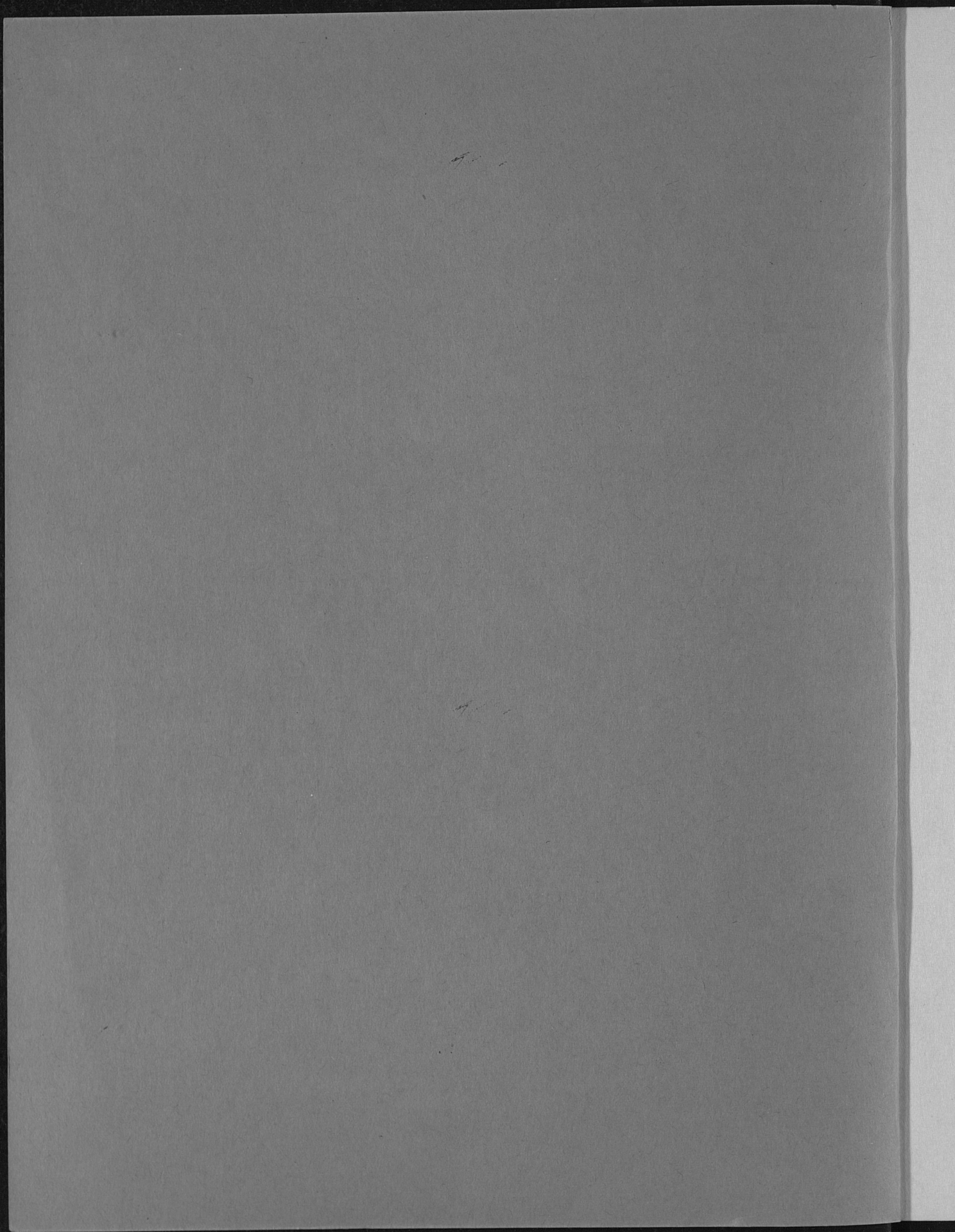
FW 4.14:
F317
ser. 6
no. 23-4P
Series 8

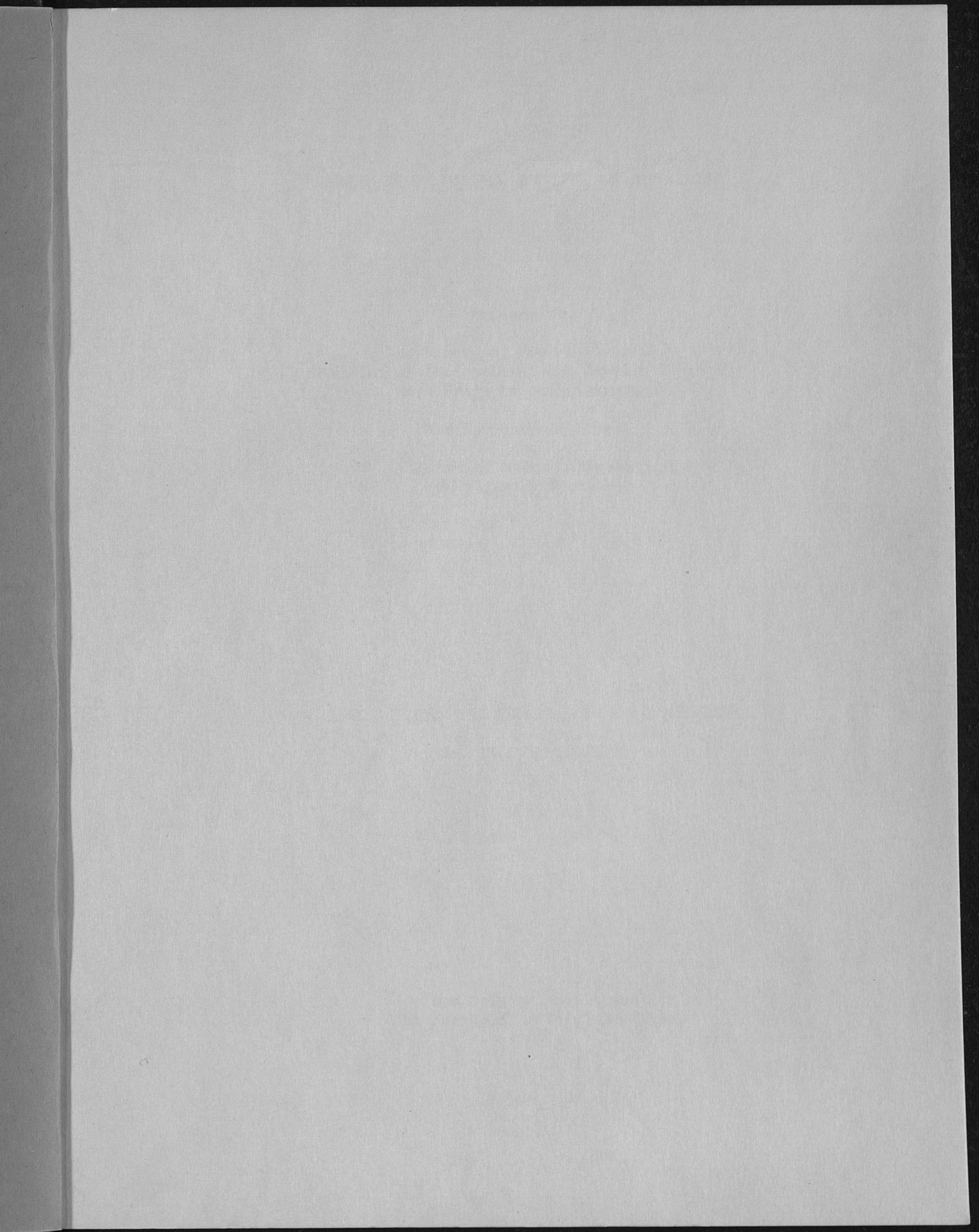


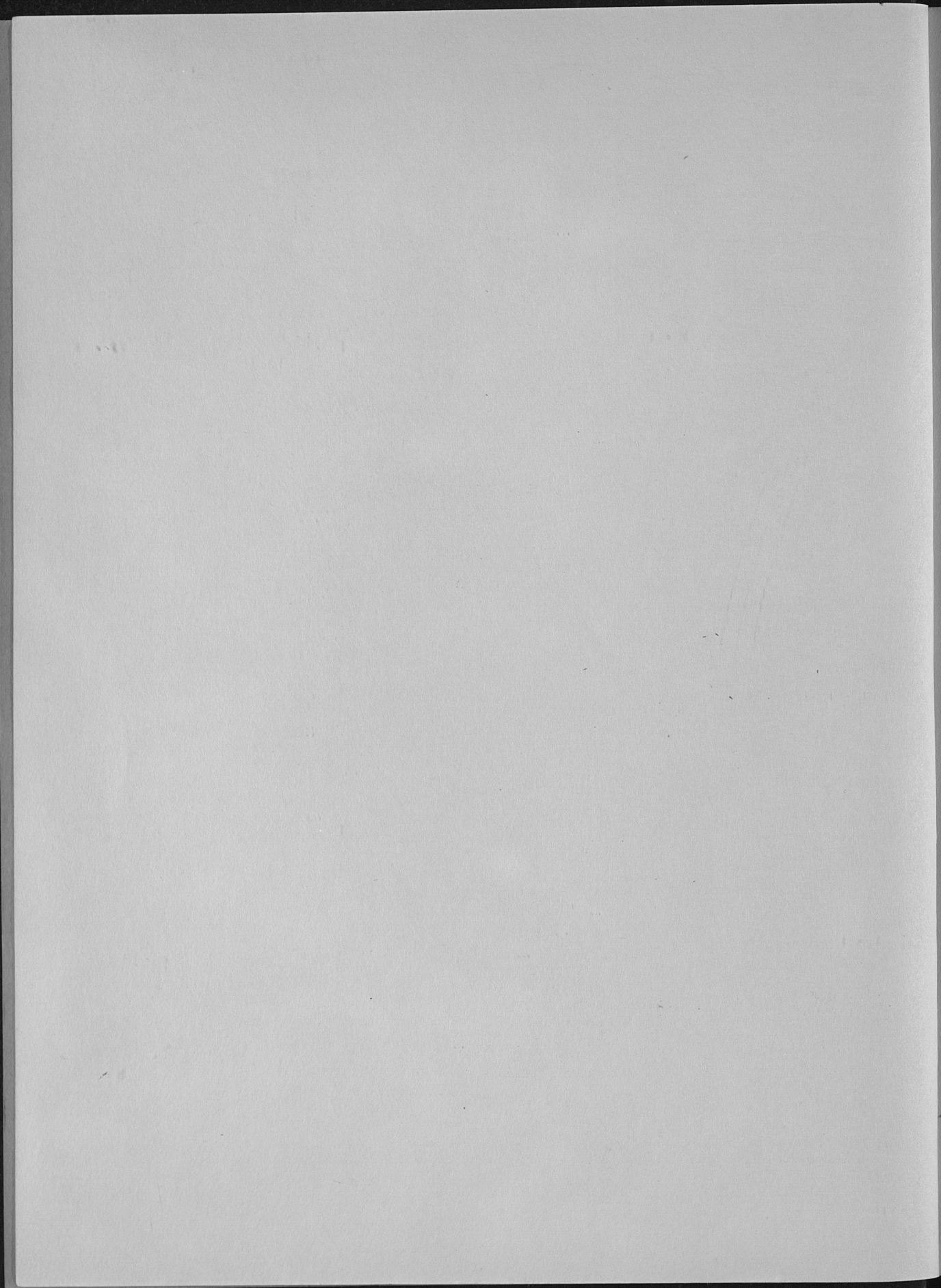
INVENTORY OF
FEDERAL ARCHIVES
IN THE STATES

SERIES VIII.
THE DEPARTMENT OF THE INTERIOR
NO 23.
MISSISSIPPI
LIBRARY
UNIVERSITY OF KENTUCKY

SURVEY OF FEDERAL ARCHIVES
WORK PROJECTS ADMINISTRATION
DIVISION OF PROFESSIONAL AND SERVICE PROJECTS
NEW ORLEANS, LOUISIANA







INVENTORY OF FEDERAL ARCHIVES IN THE STATES

Prepared by

The Survey of Federal Archives
Division of Professional and Service Projects
Work Projects Administration

The National Archives
and
Louisiana State University
Cooperating Sponsors

SERIES VIII. THE DEPARTMENT OF THE INTERIOR

No. 23. MISSISSIPPI

New Orleans, Louisiana
The Survey of Federal Archives
1941

The Survey of Federal Archives

Philip M. Hamer, National Director
Stanley C. Arthur, Regional Director for
Mississippi, Louisiana, Arkansas, and
Tennessee
George E. Schilling, State Supervisor

Division of Professional and Service Projects

Florence Kerr, Assistant Commissioner
Ethel Payne, State Director

WORK PROJECTS ADMINISTRATION

Howard O. Hunter, Commissioner
Roland B. Wall, State Administrator

PREFACE

The Inventory of Federal Archives in the States is one of the products of the work of the Survey of Federal Archives, which operated as a nation-wide project of the Works Progress Administration from January 1, 1936 to June 30, 1937, and has been continued in Mississippi since that date as a state project of that Administration and of the Work Projects Administration.

The plan for the organization of the Inventory is as follows: Series I consists of reports on the administration of the Survey, acknowledgments, and general discussions of the location, condition, and content of federal archives in the states. Succeeding series contain the detailed information secured by workers of the Survey, in inventory form, a separate series number being assigned to each of the executive departments (except the Department of State) and other major units of the Federal Government. Within each series No. 1 is a general introduction to the field organization and records of the governmental agency concerned; the succeeding numbers contain the inventory proper, separate numbers being assigned to each state in alphabetical order. Thus, in each series, the inventory for Alabama is No. 2, that for Arizona No. 3, that for Arkansas No. 4, etc.

For each local office information regarding each series, or unit of related records, is presented in the following order: title, inclusive dates ("to date" indicating an open file at the time the information was secured), general description of informational content, description of the system of filing or indexing (if any), a statement of frequency and purpose of use, form of the record itself (bound volumes, sheets in folders, etc.), linear footage, description of the containers, physical condition of the records (not stated if satisfactory), location by room number or other identifying information, and finally, the number of the Form 58SA on which this information was originally recorded by a Survey worker and from which it was abstracted for the Inventory. This form is on file in The National Archives. When it contains substantial information on addenda sheets which has not been included in the mimeographed abstract, indication of this is given by use of the reference "See addenda."

In Mississippi the work of the Survey was under the direction of Mr. Stanley C. Arthur, regional director for Mississippi, Arkansas, Louisiana, and Tennessee, with Mr. George E. Schilling as state supervisor, until June 30, 1937. From that time until April 1939, Mr. Schilling was in charge of the state project. This Inventory of the records of the Department of the Interior in Mississippi was prepared in the New Orleans office of the Survey under the direction of Mrs. Norris Fazekas, editor-in-chief and assistant state supervisor, and was edited by Oliver W. Holmes, Chief, Division of Interior Department Archives of The National Archives.

Stanley C. Arthur, Regional Director
Survey of Federal Archives for
Mississippi, Arkansas, Louisiana
and Tennessee

New Orleans, Louisiana
March 24, 1941

CONTENTS

	Page
THE GENERAL LAND OFFICE	
Jackson	
Office of the Surveyor General, Mississippi District	1
THE GEOLOGICAL SURVEY	
Aberdeen	
Water Resources Branch (Southern Division)	10
Office of the Observer	10
THE NATIONAL PARK SERVICE	
Jackson	
Branch of Historic Sites and Buildings	11
Office of Resident Historian	11
Branch of Planning and State Cooperation (Regional Office)	11
Vicksburg	
National Cemetery	12
Office of Custodian	12
National Military Park	15
Office of the Superintendent	15
THE OFFICE OF INDIAN AFFAIRS	
Philadelphia	
Choctaw Indian Agency	20
Office of the Superintendent	20

THE GENERAL LAND OFFICE

JACKSON

OFFICE OF THE SURVEYOR GENERAL, MISSISSIPPI DISTRICT
New State Capitol

A surveying district for the area "South of Tennessee" was established by an Act of Congress approved March 3, 1803 (Stat. L., II, 229). This district embraced the present states of Alabama and Mississippi, and by an Act of March 2, 1805, was extended to include the Territory of Orleans. The first Surveyor General for this district was Isaac Briggs (1803-1807) who established his office at Washington (near Natchez), Mississippi. His successors were Seth Pease (1807-1820) and Thomas Freeman (1820-1822). In 1817, during Pease's incumbency, the name was changed to the Mississippi District, and by Act of April 20, 1818, Alabama was made a separate district. The Mississippi District apparently inherited most of the records of the district "South of Tennessee," and when the Surveyor General's Office for the Mississippi district was closed, October 31, 1849, all records in its custody were delivered over to the state authorities. They are at present in the custody of the State Land Commissioner, subject, however, to inspection by the Federal Government.

All records listed below relate to the surveys of lands and not to their sale or other disposition. The records of the disposition of the public domain in Mississippi were transmitted to the General Land Office in Washington when, in 1925, the last local land office in Mississippi (located at Jackson), was closed. They have not been returned to Mississippi because the state legislature refused to appropriate money to cover the cost of transportation.

1. CORRESPONDENCE COPY BOOK, 1803 - 1813. Manuscript copy of correspondence of Surveyors General in Mississippi and Louisiana with the Secretary of Treasury and others. (Never.) 11 x 13 bound vols., 1 in., in steel drawer. Brittle, torn, damaged by careless handling, bindings broken, and yellow with age. R. 114. (62)

2. CLAIMS EAST OF PEARL RIVER IN MISSISSIPPI, RECORDS OF, 1805 - 1827. Book C, original U. S. Surveyors' plats and grants, pages 1-383. Indexed. (Never.) 15 x 19 bound vol., 2 in., on steel roller shelf. Damaged by careless handling. R. 114. (44)

3. FIELD NOTES AND RECORDS OF U. S. SURVEYORS, 1805 - 1832. Book 19, for districts east of Pearl River, east and west of U. S. Commissioners swamp lands, and counties and township maps, pages 1-580, 1-5 mutilated and torn, 85 pages missing. (Rarely, official.) 17 x 19 notebook and maps, 2 in., on steel roller shelf. Brittle, torn, binding broken, ink faded, and damaged by careless handling and faulty containers. R. 114. (38)

4. FIELD NOTES OF U. S. SURVEYORS, 1805 - 1846. Book 88, with plats or maps of U. S. Public Lands South of Tennessee in state of Mississippi, Choctaw Cession. (Occasionally, official.) 5 x $7\frac{1}{2}$ and $6\frac{1}{2}$ x 8 books, plats, and maps, c. 2 ft., in bin. Ink faded. R. 114. (37)
5. FIELD NOTES OF U. S. SURVEYORS, 1805 - 1876. Choctaw Cession for territory south of Tennessee in Mississippi. (Occasionally, official.) Various sized notebooks, c. 2 ft. 6 in., in bin 68. Ink faded. R. 114. (37)
6. FIELD NOTES OF U. S. SURVEYOR, 1806 - 1821. Original field notes covering various sections of the state, especially the southern and southwestern parts. (Occasionally, official.) 6 x 8 leaves riveted together, 10 in., in bin 76 of steel cabinet. R. 114. (35)
7. FIELD NOTES, MAPS, AND RECORDS OF U. S. SURVEYORS, 1806 - 1832. Book 21, for district east of Pearl River, U. S. Commissioners swamp lands, pages 1-528, $\frac{1}{2}$ of page 1 missing, also contains county maps. (Rarely, official.) $17\frac{1}{2}$ x 19 notebook, $2\frac{1}{2}$ in., on steel roller shelf. Brittle, torn, binding broken, ink faded, and damaged by careless handling and faulty containers. R. 114. (38)
8. FIELD NOTES OF OLD CLAIM RECORDS OF U. S. SURVEYORS, 1806 - 1832. Book 25, district east of Pearl River north of 30 latitude, U. S. Commissioner of swamp lands, pages 1-453. Indexed. (Rarely, official.) 17 x $19\frac{1}{2}$ notebook, 2 in., on steel roller shelf. Brittle, torn, binding broken, ink faded, and damaged by careless handling and faulty containers. R. 114. (38)
9. FIELD NOTES OF U. S. SURVEYORS, 1806 - 1844. Of Choctaw Cession south of Tennessee in state of Mississippi. Indexed. (Occasionally, official.) $8\frac{1}{2}$ x 13 index, $4\frac{1}{4}$ x 10 folded plats, and 6 $\frac{3}{4}$ x 8 notebooks, c. 3 ft., in bin 82. Ink faded. R. 114. (37)
10. FIELD NOTES OF U. S. SURVEYORS, 1806 - 1845. Choctaw Cession, for east of Pearl River and private claims and list of claimants on Island Petit Bois. (Occasionally, official.) $10\frac{1}{4}$ x $10\frac{1}{4}$ notebooks, c. 1 ft. $\frac{1}{2}$ in., in bin 100. Ink faded. R. 114. (37)
11. FIELD NOTES OF U. S. SURVEYORS, 1808 - 1834. Territory south of Tennessee in Mississippi. (Occasionally, official.) $6\frac{1}{2}$ x $10\frac{1}{4}$ notebooks, c. 1 ft. 6 in., in bin 74. Ink faded. R. 114. (37)
12. FIELD NOTES OF U. S. SURVEYORS, 1808 - 1849. Book 85, of survey of public lands south of Tennessee in state of Mississippi. (Occasionally, official.) 5 x $7\frac{1}{2}$ and $6\frac{1}{2}$ x 8 notebooks, c. 1 ft., in bin. Ink faded. R. 114. (37)
13. TOWNSHIP MAPS, WEST OF BASIS MERIDIAN, CHOCTAW DISTRICT, 1809 - 1831. Book 2, maps and charts. (Rarely, official.) 17 x $22\frac{1}{2}$ bound vol., 2 in., on steel roller shelf. Damaged by careless handling and binding broken, R. 114. (40)

14. FIELD NOTES OF U. S. SURVEYORS WITH MAPS, 1809 - 1837. Copy of original maps of land grants to individuals, original survey made by Spanish Government January 21, 1788. This copy made by John C. Turner, U. S. Deputy Surveyor, Feb. 5, 1831, also contains copy of original claim of 1200 acres of John Burnett, Jr., from Spanish Government July 8, 1810. (Rarely, official.) $8\frac{1}{2}$ x 10 folders and bound vols., 1 in., in steel lock bin 85. Torn, bindings broken, ink faded, brittle, and damaged by careless handling. R. 114. (39)
15. FIELD NOTES AND RECORDS OF U. S. SURVEYORS, 1809 - 1841. Book 18, for east district, west of Pearl River, pages 1-452. Indexed. (Rarely, official.) $17\frac{1}{2}$ x $19\frac{1}{2}$ notebook, $2\frac{1}{2}$ in., on steel roller shelf. Brittle, torn, binding broken, ink faded, and damaged by careless handling and faulty containers. R. 114. (38)
16. CERTIFICATES FROM BOARD OF UNITED STATES COMMISSIONER, WEST OF PEARL RIVER TO SURVEY LANDS FOR INDIVIDUALS IN CITY OF NATCHEZ, MISSISSIPPI, Mar. 13, 1810. U. S. Surveyors' notes and maps of survey for individuals who evidently had land patents and wanted the original survey checked and verified, certificates numbered B-6, 7, 8, 11, 19, 38, 49, and 50. (Rarely, official.) 3 x 8 folders, $\frac{1}{2}$ in., in steel locker bin 85. R. 114. (45)
17. FIELD NOTES OF U. S. SURVEYORS, 1810 - 1832. Book 22, for district east of Pearl River, north of 31 latitude west, U. S. Commissioner's swamp land, pages 1-393. Indexed. (Rarely, official.) 17 x 19 notebook, $2\frac{1}{2}$ in., on steel roller shelf. Brittle, torn, binding broken, ink faded, and damaged by careless handling and faulty containers. R. 114. (38)
18. FIELD NOTES OF U. S. SURVEYORS, 1810 - 1844. For territory south of Tennessee in state of Mississippi, Choctaw Cession; Field Notebook 46, showing Choctaw boundary from Black Creek to Arkansas with interesting log or diary in connection with survey notes. (Occasionally, official.) Various sized notebooks, c. 1 ft. 6 in., in bin 63. Ink faded. R. 114. (37)
19. FIELD NOTES OF U. S. SURVEYORS, 1820 - 1846. Book 23, east of Pearl River, south of 31 latitude, pages 1-503 with some blank. Indexed. (Rarely, official.) 17 x $22\frac{1}{2}$ notebook, 2 in., on steel roller shelf. Brittle, torn, binding broken, ink faded, and damaged by careless handling and faulty containers. R. 114. (38)
20. CLAIMS EAST OF PEARL RIVER IN MISSISSIPPI, RECORD OF, 1820 - 1848. Book A, records of claims east of Pearl River in Mississippi, original grants, pages not numbered. Indexed. (Never.) 17 x 20 bound vol., $2\frac{1}{2}$ in., on steel roller shelf. Damaged by careless handling. R. 114. (44)
21. FIELD NOTES AND PLATS OF U. S. SURVEYORS, 1821 - 1823. Townships and ranges east of Choctaw District, pages 1-337, 19 and 20 missing. (Rarely, official.) $16\frac{1}{2}$ x 19 notebook and plats, 2 in., on steel roller shelf. Brittle, torn, scattered, binding broken, ink faded, and damaged by careless handling and faulty containers. R. 114. (38)

22. FIELD NOTES OF U. S. SURVEYORS, 1821 - 1823. Book 1, original, Choctaw District, west of Pearl River, townships 1-15, ranges 1-6 west, pages 338-649. (Rarely, official.) $16\frac{1}{2}$ x $21\frac{1}{2}$ notebook, 2 in.; on steel roller shelf. Brittle, torn, binding broken, ink faded, and damaged by careless handling and faulty containers. R. 114. (38)
23. FIELD NOTES OF U. S. SURVEYORS, 1821 - 1827. Book 36, for Choctaw District, townships 1-15, ranges 1-2 west, pages 1-368. Indexed. (Rarely, official.) 13 x 19 notebook, $2\frac{1}{2}$ in.; on steel roller shelf. Brittle, torn, binding broken, ink faded, and damaged by careless handling and faulty containers. R. 114. (38)
24. FIELD NOTES OF U. S. SURVEYORS, 1821; 1825 - 1833. Pertaining to Choctaw Cession, territory south of Tennessee in state of Mississippi, west boundary of old Chickasaw boundary of 1821. (Occasionally, official.) 7 x 8 paper-back notebooks, 1 in., in steel bins with lock. Brittle, bindings broken and ink faded. R. 114. (36)
25. FIELD NOTES OF U. S. SURVEYORS, 1821 - 1844. Choctaw Cession, south of Tennessee in Mississippi. (Occasionally, official.) $10\frac{1}{4}$ x $10\frac{1}{4}$ notebooks, c. 1 ft. $\frac{1}{2}$ in., in locker bin 69. R. 114. (37)
26. FIELD NOTE RECORDS OF U. S. SURVEYORS, 1821 - 1846. Book 24, for district east of Pearl River, south of latitude 31 west, U. S. Commissioners swamp lands, pages 1-487, 390-403 blank. (Rarely, official.) $17\frac{1}{2}$ x $19\frac{1}{2}$ notebook, $2\frac{1}{2}$ in., on steel roller shelf. Brittle, torn, binding broken, ink faded, and damaged by careless handling and faulty containers. R. 114. (38)
27. FIELD NOTES OF U. S. SURVEYORS, 1823 - 1843. With maps of Choctaw Cession, south of Tennessee in Mississippi. Indexed. (Occasionally, official.) $10\frac{1}{4}$ x $10\frac{1}{4}$ notebooks, c. 1 ft. 4 in., in bin 78. Ink faded. R. 114. (37)
28. JOURNAL OF PROCEEDINGS OF U. S. COMMISSIONERS WITH CHICKASAW NATION, Oct. 15 - Nov. 8, 1826. Unbound manuscript copy of attempted treaty between the United States Government represented by Thomas Hinds and John Coffee and the Chickasaw Indians represented by Levi Colbert, Em-mubbie, J. McClish, Martin Colbert, and others. (Never.) 8 x 13 bundle, $1\frac{1}{8}$ in., in steel drawer. R. 114. (68)
29. JOURNAL OF PROCEEDINGS WITH CHOCTAW INDIANS, Nov. 10 - Nov. 16, 1826. Unbound manuscript copy of attempted treaty between the United States Government represented by Thomas Hinds, William Clark, and John Coffee and the Choctaw nation represented by General Hummingbird, Nittuckacchee, John Garland, J. J. Pichelyn, Israel Folsom, J. L. McDonald and others. (Never.) 8 x 13 bundle, $1\frac{1}{8}$ in., in steel drawer. R. 114. (67)
30. RECORD OF CLAIMS EAST OF PEARL RIVER IN MISSISSIPPI, 1827 - 1831. Book B, original maps and record of claims in Mississippi, basis meridian and Mobile, Ala., pages 1-58 west of basis meridian,

pages 112-113 (blank), pages 59-111, city of Mobile, Ala. Indexed. (Never.) 12 x 17 $\frac{1}{2}$ bound vol., 1 $\frac{1}{2}$ in., on steel roller shelf. Damaged by careless handling. R. 114. (44)

31. CORRESPONDENCE COPY BOOK, Apr. 4, 1828 - Jan. 7, 1839. Manuscript copy of correspondence of surveyors general in Jackson, Miss., and the commissioners of the General Land Office in Washington, D. C., concerning lack of system in keeping records, policy of many surveyors general in carrying off records when dismissed, settlements of claims, corrections of errors in reports, circulars, salary delays, vouchers, living expenses of period in Mississippi, and low value of Mississippi bank specie. (Never.) 9 $\frac{1}{2}$ x 15 bound vol., 1 $\frac{1}{2}$ in., in steel drawer. Torn and brittle. R. 114. (69)

32. FIELD NOTES AND RECORDS OF U. S. SURVEYORS, 1829 - 1849. Book 20, for district west of Pearl River, pages 7-679, 447-488 blank. Volume index. (Rarely, official.) 17 $\frac{1}{2}$ x 20 $\frac{1}{2}$ notebook, 2 $\frac{1}{2}$ in., on steel roller shelf. Brittle, torn, binding broken, ink faded, and damaged by careless handling and faulty containers. R. 114. (38)

33. MAP OF SURVEY, Feb. 5, 1831. Of land grants issued by Spanish Government in 1793. (Occasionally, official.) 10 $\frac{1}{4}$ x 10 $\frac{1}{4}$ map, c. 3 in., in pasteboard box. R. 114. (37)

34. FIELD NOTES OF U. S. SURVEYORS, 1831 - 1832. Books 23, 86, and 92, of survey of public lands south of Tennessee, in Mississippi. (Occasionally, official.) 6 3/4 x 8 $\frac{1}{2}$ and 8 x 12 $\frac{1}{2}$ notebooks, c. 2 ft., in bin. Ink faded. R. 114. (37)

35. FIELD NOTES AND RECORDS OF U. S. SURVEYORS, 1831 - 1834. Book 5, Choctaw Cession, east of basis meridian, pages 1-431. (Rarely, official.) 17 x 19 $\frac{1}{2}$ notebook, 2 in., on steel roller shelf. Brittle, torn, binding broken, ink faded, and damaged by careless handling and faulty containers. R. 114. (38)

36. FIELD NOTES AND RECORDS OF U. S. SURVEYORS, 1831 - 1834. Book 7, Choctaw Cession, pages 1-390. Indexed. (Rarely, official.) 17 x 19 $\frac{1}{2}$ notebook, 2 in., on steel roller shelf. Brittle, torn, binding broken, ink faded, and damaged by careless handling and faulty containers. R. 114. (38)

37. FIELD NOTES AND RECORDS OF U. S. SURVEYORS, 1831 - 1835. Book 7, U. S. Commissioner swamp lands, pages 1-537, 460-482 blank. Indexed. (Rarely, official.) 17 x 19 $\frac{1}{2}$ notebook, 2 $\frac{1}{2}$ in., on steel roller shelf. Brittle, torn, binding broken, ink faded, and damaged by careless handling and faulty containers. R. 114. (38)

38. FIELD NOTES OF U. S. SURVEYORS, 1831 - 1839. Book 90, Choctaw Cession, in territory south of Tennessee in state of Mississippi. (Occasionally, official.) 6 x 10 and 7 $\frac{1}{4}$ x 9 notebooks, 6 in., in bin. Ink faded. R. 114. (37)

39. FIELD NOTES OF U. S. SURVEYORS, 1832 - 1837. Of township and interior section lines, E. basis meridian, south of Tennessee in

Mississippi, some contain maps, applications for, and applications issued. (Occasionally, official.) $10\frac{1}{4} \times 10\frac{1}{4}$ notebooks, c. 1 ft. $\frac{1}{2}$ in., in locker bin 64. Ink faded. R. 114. (37)

40. FIELD NOTE RECORDS OF U. S. SURVEYORS, 1832 - 1841. Book 3, Choctaw Cession, ranges 1-4 east, pages 1-557, 17-125 blank. Indexed. (Rarely, official.) 17×19 notebook, $2\frac{1}{2}$ in., on steel roller shelf. Brittle, torn, binding broken, ink faded, and damaged by careless handling and faulty containers. R. 114. (38)

41. FIELD NOTE RECORDS OF U. S. SURVEYORS, 1832 - 1834, and 1844. For Chickasaw District T. S. 1-20, range 16 east, pages 1-206 and 207-427 containing record of township 9, range 7 west, east of Pearl River. Basis line Choctaw District, also township 3, range 18. Re-survey intersection lines of township 18, range 16, east of basis meridian, made in the fourth quarter 1844, township 1, range 18 east of basis line of Choctaw District was re-surveyed July 25 and 26, 1809. (Rarely, official.) 3 in., on steel roller shelf. Brittle, torn, binding broken, ink faded, and damaged by careless handling and faulty containers. R. 114. (38)

42. FIELD NOTE RECORDS OF U. S. SURVEYORS, 1833 - 1834. Book 8, Choctaw Cession, U. S. Commissioner of swamp lands, ranges 13-14 east, pages 1-422. Indexed. (Rarely, official.) $17 \times 19\frac{1}{2}$ notebook, 2 in., on steel roller shelf. Brittle, torn, binding broken, ink faded, and damaged by careless handling and faulty containers. R. 114. (38)

43. FIELD NOTES OF U. S. SURVEYORS, 1833 - 1834. Book 26, basis meridian, in state of Mississippi, Choctaw Cession, pages 1-494. Indexed. (Rarely, official.) $12 \times 17\frac{1}{2}$ notebook, $2\frac{1}{2}$ in., on steel roller shelf. Brittle, torn, binding broken, ink faded, and damaged by careless handling and faulty containers. R. 114. (38)

44. FIELD NOTES OF U. S. SURVEYORS, 1833 - 1835. Of interior district lines, Choctaw Cession, basis meridian. (Rarely, official.) Loose leaves, 2 in., on steel roller shelf. Torn, brittle, scattered, ink faded, and damaged by careless handling and faulty containers. R. 114. (38)

45. FIELD NOTES OF U. S. SURVEYORS, 1833 - 1835. On interior section lines of Choctaw Cession, south of state of Tennessee in Mississippi, pages 1-428. (Rarely, official.) $13 \times 17\frac{1}{2}$ notebook, $2\frac{1}{2}$ in., on steel roller shelf. Brittle, torn, binding broken, ink faded, and damaged by careless handling and faulty containers. R. 114. (38)

46. FIELD NOTES OF U. S. SURVEYORS, 1833 - 1835. Book 30, interior section lines east of base of Choctaw Cession, township 1-17, ranges 3-4 east, pages 1-629, 636-639 torn and missing. (Rarely, official.) $17\frac{1}{2} \times 22\frac{1}{2}$ notebook, 3 in., on steel roller shelf. Brittle, torn, binding broken, ink faded, and damaged by careless handling and faulty containers. R. 114. (38)

47. FIELD NOTE RECORDS OF U. S. SURVEYORS, 1833 - 1835. Book 32, Chickasaw Cession, east of Chickasaw base line, surveyor's office, Pontotoc, certifying to transverse boundary, Tennessee line between Tennessee and Mississippi, pages 1-626. Indexed. (Rarely, official.) 13 x 17 $\frac{1}{2}$ notebook, 3 in., on steel roller shelf. Brittle, torn, binding broken, ink faded, and damaged by careless handling and faulty containers. R. 114. (38)
48. FIELD NOTE RECORD BOOK OF U. S. SURVEYORS, 1833 - 1837. For state of Mississippi, Choctaw Cession, interior section lines, sections 1-10, range 8-13 west, pages 1-616. (Rarely, official.) 13 x 17 $\frac{1}{2}$ notebook, 2 $\frac{3}{4}$ in., on steel roller shelf. Brittle, torn, binding broken, ink faded, and damaged by careless handling and faulty containers. R. 114. (38)
49. FIELD NOTES OF U. S. SURVEYORS, 1833 - 1837. Book 28, east of Choctaw Cession, base interior, section lines, townships 1-16, ranges 1-2 east, pages 1-644. (Rarely, official.) 12 $\frac{1}{2}$ x 17 $\frac{1}{2}$ notebook, 3 in., on steel roller shelf. Brittle, torn, binding broken, ink faded, and damaged by careless handling and faulty containers. R. 114. (38)
50. FIELD NOTES AND RECORDS OF U. S. SURVEYORS, 1833 - 1839. Book 29, Chickasaw Cession, west of Chickasaw base line and notes of interior section lines, pages 4-366; 377-428 missing. (Rarely, official.) 13 x 17 $\frac{1}{2}$ notebook, 3 in., on steel roller shelf. Brittle, torn, binding broken, ink faded, and damaged by careless handling and faulty containers. R. 114. (38)
51. FIELD NOTES OF U. S. SURVEYORS, 1833 - 1843. Book 17, records of Choctaw Cession west, pages 1-603. (Rarely, official.) 11 $\frac{1}{4}$ x 16 notebook, 2 $\frac{1}{2}$ in., on steel roller shelf. Brittle, torn, binding broken, ink faded, and damaged by careless handling and faulty containers. R. 114. (38)
52. FIELD NOTES OF U. S. SURVEYORS, 1833 - 1844. Book 6, records, Choctaw Cession, of U. S. Commission, swamp and overflow lands east of Pearl River, pages 1-558. Indexed. (Rarely, official.) 17 x 19 notebook, 2 $\frac{1}{2}$ in., on steel roller shelf. Brittle, torn, binding broken, ink faded, and damaged by careless handling and faulty containers. R. 114. (38)
53. FIELD NOTES AND RECORDS OF U. S. SURVEYORS, 1834 - 1835. Book 34, for Chickasaw Cession, of interior section lines, ranges 5-8 west, sections 1-12 west, pages not numbered. (Rarely, official.) 12 x 17 notebook, 2 $\frac{1}{2}$ in., on steel roller shelf. Brittle, torn, binding broken, ink faded, and damaged by careless handling and faulty containers. R. 114. (38)
54. MAP OF LINE DIVIDING CHICKASAW AND CHOCTAW CESSIONS OF U. S. SURVEYORS, 1836. (Rarely, historical.) 6 x 9 $\frac{2}{3}$ roll, 1 $\frac{1}{4}$ in., on steel roller. R. 114. (41)

55. MAP OF BOUNDARY LINE BETWEEN STATES OF TENNESSEE AND MISSISSIPPI, U. S. SURVEYORS, 1837. Showing townships and ranges. (Rarely, official.) $10\frac{1}{2}$ x $68\frac{1}{2}$ roll, 2 in., in steel drawer. Brittle and torn. R. 114. (42)
56. CORRESPONDENCE COPY BOOK, 1841 - 1843. Journal of correspondence divided by years from commissioner of General Land Office and others to surveyor general at Jackson, Miss., showing that surveyors general were engaged in making re-surveys, settling claims, and checking funds expended. (Never.) 8 x 12 bound vol., 1 in., in steel drawer. R. 114. (66)
57. FIELD NOTES OF U. S. SURVEYORS, 1841 - 1844. Book 93, survey of public lands south of Tennessee in state of Mississippi, Choctaw Cession. (Occasionally, official.) 7 x 10 notebook, c. 3 in., in bin. Ink faded. R. 114. (37)
58. U. S. LAND GRANTS AND PATENTS TO STATE OF MISSISSIPPI ON ST. STEPHENS, WASHINGTON, AND CHOCTAW MERIDIANS, MISCELLANEOUS, 1842 - 1909. Records of swamp and overflow lands conveyed to the state of Mississippi and subject to disposal by Mississippi legislature. (Rarely, official.) $18\frac{1}{2}$ x $24\frac{1}{2}$ loose-leaf books, 10 in., on closed steel roller shelves. R. 114. (47)
59. U. S. LAND GRANTS AND PATENTS TO MISSISSIPPI FOR SCHOOL PURPOSES IN CHICKASAW AND CHOCTAW CESSIONS, June 1843 - Feb. 1895; Mar. 1897 - Feb. 1899. List 4-207 of lands granted to Mississippi within Choctaw Cession, in lieu of Act June 13, 1842; copies of land grants and patents to Mississippi for Industrial Institute College for white girls, Feb. 4, 1899, Choctaw Cession, 21,920.82 acres; copy of land grants and patents to Mississippi, Alcorn Agricultural and Mechanical College for colored people, Choctaw Cession, Mar. 4, 1897, 22,228.50 acres; list 2 of selections of lands and patents accepted by Mississippi, granted by U. S. Government Feb. 20, 1895; Agricultural and Mechanical College for white people, Choctaw Cession, 22,809.80 acres; list of Chickasaw School Lands granted Mississippi under Act of Congress, June 13, 1842, by sections, townships and ranges, with dates of location, 1842 - 1844, pages not numbered. (Rarely, official.) 12 x 18 and 18 x 22 loose-leaf books, 1 in., on covered steel roller shelf. R. 114. (46)
60. FIELD NOTES OF U. S. SURVEYORS, 1855 - 1858. On swamp lands granted to state of Mississippi by Act of Congress, Sept. 28, 1850 with council proceedings between Choctaw Indians and U. S. Commissioners, 1826. (Occasionally, official.) $8\frac{1}{2}$ x $14\frac{1}{2}$ and $10\frac{1}{4}$ x $10\frac{1}{4}$ notebooks, 1 ft. $\frac{1}{2}$ in., in bin 101. Ink faded. R. 114. (37)
61. PLATS AND GRANTS OF GULF AND SHIP ISLAND RAILROAD, WASHINGTON MERIDIAN, MISCELLANEOUS, 1893 - 1913, with the following years missing: 1894, 1896, 1898, 1903, 1905, and 1912. Grant list numbers 1-12 approved with 5-7 and 9 missing. (Rarely, official.) $18\frac{1}{2}$ x $24\frac{1}{2}$ loose-leaf books, 10 in., on steel roller shelf. R. 114. (48)

62. FIELD NOTES AND RECORDS OF U. S. SURVEYORS, n. d. Book 13, Choctaw Cession of U. S. Commissioners' swamp lands, pages 1-550. (Rarely, official.) 17 x 19 $\frac{1}{2}$ notebook, 2 $\frac{3}{4}$ in., on steel roller shelf. Brittle, torn, binding broken, ink faded, and damaged by careless handling and faulty containers. R. 114. (38)

63. FIELD NOTES OF U. S. SURVEYORS, n. d. Of boundary lines between Choctaw and Chickasaw Cessions. (Rarely, official.) 1 in., on steel roller shelf. Brittle, torn, binding broken, ink faded, and damaged by careless handling and faulty containers. R. 114. (38)

64. MAPS AND CHARTS OF MISSISSIPPI COUNTIES, U. S. SURVEYORS, n.d. For Augusta District, Choctaw Cession. Indexed as to township and ranges. (Frequently, official.) 13 $\frac{1}{2}$ x 17 bound vols. (2), 2 in., on steel roller shelf in filing case. Damaged by careless handling. R. 114. (43)

THE GEOLOGICAL SURVEYABERDEEN

WATER RESOURCES BRANCH, (SOUTHERN DIVISION)
Office of the Observer
North Franklin Street

This office of the Observer for the Southern Division River Gage observation station was established about 1890 and was located in the residence of O. L. McKay, observer, until 1900, when it was moved to the residence of L. D. Godsey, observer, where it remained until 1914. Since 1914 the office has been located at the residence of the present observer on North Franklin Avenue. A record is kept of the river gage readings, taken twice daily, accompanied by reports showing change in last twenty-four hours, amount of precipitation for the preceding twenty-four hours, amount of snowfall, and weather conditions. Copies of reports mailed daily, weekly, and monthly to Washington, are retained on file in this office.

65. RECORD OF DAILY RIVER GAGE, 1890 - 1936. Reports of daily gage of rise and fall of water. Filed as official record. (Never.) 4 x 6 and 8 x 10 bound vols. and bundles, 2 ft., in wooden box, Dirty and damaged by careless handling. Spratt residence. (46)

THE NATIONAL PARK SERVICE

JACKSON

BRANCH OF HISTORIC SITES AND BUILDINGS
Office of Resident Historian
Tower Bldg., corner S. Roach and W. Pearl Sts.

This field office of the National Park Service, Branch of Historic Sites and Buildings, was established in January 1936, and has occupied quarters in its present location since its inception. However, preliminary surveys for the Natchez Trace Parkway were begun in January 1935, but only temporary headquarters were maintained at places convenient for the surveyors. Associated with this office in the Natchez Trace Parkway project, are the National Park Service, Branch of Planning and Design, Resident Landscape Architect, and Bureau of Public Roads, Associate Highway Engineer. These subdivisions act as a unit in carrying on the development of parkway work in Tennessee, Alabama, and Mississippi, all work being directed from this office. Duplicates of all correspondence and reports pertaining to Natchez Trace Parkway project are sent to Washington; all other records are retained by this office.

66. CORRESPONDENCE AND REPORTS CONCERNING NATCHEZ TRACE PARKWAY, 1935 - 1936. Between state office and Washington. Filed alphabetically. (Occasional, official.) 9 x 12 folders, 1 ft. 6 in., in drawer of steel filing case. R. 1009. (491)

BRANCH OF PLANNING AND STATE COOPERATION,
REGIONAL OFFICE
Old Merchants Bank Building
Corner E. Capitol and S. State Sts.

This office of the Assistant Engineer of the National Park Service Branch of Planning and State Cooperation Regional Office was established in 1934 and has maintained quarters in its present location since its inception. This office cooperates with the office of the Resident Historian, Branch of Historic Sites and Buildings, and Bureau of Public Roads in the Natchez Trace Parkway project, the three acting as a unit in carrying on the development of parkway work. All records have been retained and none has been lost, destroyed, or sent to Washington.

67. GENERAL CORRESPONDENCE AND COPIES OF TELEGRAMS, 1934 - 1937. With Washington, regional office, Atlanta office, and superintendents

concerning general equipment, finance, reports, and memoranda pertaining to parks. Filed by subjects; telegrams filed chronologically. (Frequently, official.) 6 x 8 loose slips and 10 x 12 folders, 28 ft. 10 in., in 13 drawers of steel filing cases and 5 drawers of transfer cases. R. 403. (738)

68. BLUEPRINTS AND TRACINGS, 1934 to date. Outlining the boundaries of proposed sale lands, road sketches, etc. Filed by units. (Frequently, official.) Various sizes, 1 ft. 2 in., in 10 drawers of wooden cabinet. Rs. 401, 402, and 410. (739, 741, 742)

69. PERSONNEL FILE, 1934 to date. Record of each person employed, showing time absent from official duty. Filed alphabetically. Index. (Frequently, official.) 4 x 9 cards, 6 in., in drawer of wooden card cabinet. R. 403. (736)

70. PERSONNEL LEAVE SLIPS, 1934 to date. Form 1-034, showing name, address, salary, leave and return. Filed alphabetically. Index. (Frequently, official.) 4 x 6 slips, 6 in., in drawer of wooden card cabinet on top of steel filing case. R. 403. (737)

71. PHOTO PRINTS, 1934 to date. Assortment of prints and corresponding negatives on such subjects as roads, trails, cabins, and dam sites. Filed by parks. (Frequently, official.) $3\frac{1}{2}$ x $5\frac{1}{2}$ prints and 5 x 7 envelopes, 1 ft., in drawer of steel filing case. R. 403. (892)

72. PURCHASE ORDERS, 1934 to date. Itemized statement of articles purchased, amount paid for each article, total amount paid, date, and from whom purchased. Filed numerically. (Frequently, official.) 10 x 12 folders, 13 ft. 6 in., in 4 drawers of steel filing case and 5 drawers of transfer cases. R. 410. (740)

VICKSBURG

NATIONAL CEMETERY
Office of Custodian
Custodian's Lodge
Vicksburg National Military Park

This national cemetery was established April 13, 1866, by public resolution number 21, under the jurisdiction of the War Department office of the Quartermaster General, and through a reorganization effective August 11, 1933, was transferred to the Department of Interior, although certain types of orders are yet issued by the Quartermaster General. Quarters were maintained in a building constructed about 1867 and used until 1926 or 1927 when the offices were moved to the Custodian's Lodge located at the northeast gate leading to the National Military Park. The cemetery fronting Yazoo Canal, two miles north of Vicksburg, is located on Highway 61.

The public resolution provides "That the Secretary of War be, and

is hereby authorized and required to take immediate measures to preserve from desecration the graves of the soldiers of the United States who fell in battle or died of disease in the hospital during the war of rebellion, to secure suitable burial places in which they may be properly interred, and to have the grounds enclosed, that the resting place of the honored dead may be kept sacred forever."

Pursuant to this act, the government secured a deed, dated August 27, 1866, for the forty acres which now comprise the area of the cemetery. Commencing in 1867, those men who died in defense of the Union within an approximate radius of 150 miles were disinterred and buried in the National Cemetery. The districts served include southeastern Arkansas, northeastern Louisiana, Port Gibson, Clinton, Bovina, Meridian, Champion's Hill, Jackson, Bayou Bluff, Syner's Bluff, Chickasaw Bayou, Millsdale and north as far as Grenada.

Following the Spanish-American War the original resolution was modified so that other than those who served during the Civil War might be entitled to interment in the national cemeteries. All useless papers have been destroyed, none has been lost. Copies of all important records are sent to Washington and are on file in the Quartermaster General's office.

73. CLASSIFIED STATEMENT OF INTERMENTS, 1863 - 1936. Of white and colored soldiers, known and unknown, showing number of grave, name, rank, company, regiment, date of death, disease, section, and remarks. Arranged alphabetically. (Frequently, official.) 12 x 16 vols. (3), 1 ft. 10 in., on table. Damaged by vermin, careless handling, torn, bindings broken. SE. corner, basement. (719)

74. INDEX TO INTERMENTS, 1863 - 1936. Showing name, state, military record, date of discharge, section, grave, and date of death. Arranged alphabetically. (Frequently, official.) 3 x 5 cards, 7 ft. 4 in., in 7 pasteboard boxes. NW. corner, 1st floor. (720)

75. FIELD SHEETS OF DISINTERMENTS, 1868. Showing description of locality, number of bodies found, whether known or unknown, name or number, rank, company, regiment, date of death, epitaphs, and remarks. Arranged numerically. (Never.) 9 x 14 sheets, 4 in., in wooden box. Damaged by vermin, rodents, faulty containers, dirty. SE. corner, basement. (723)

76. CORRESPONDENCE, 1868 - 1932. Between the Quartermaster General, and Washington, and officer in charge of cemetery concerning interment of remains, purchasing supplies, and repairs. Arranged chronologically. 11½ x 17 vol. indices (2), 1 in. (Occasionally, official.) 12 x 16 vols. (11), 1 ft., on wooden shelf. Dirty, bindings broken. SE. corner, basement. (717, 718)

77. MONTHLY TIME BOOKS, 1869 - 1920. Showing name of person, where worked, days worked, total time, rate, and amount of work done in cemetery. (Never.) 5 x 8 vols. (15), 4 in., in wooden box. Damaged by vermin, rodents, brittle, dirty, torn. SE. corner, basement. (732)

78. MISCELLANEOUS REPORTS, (A) 1875 - 1920; (B) 1872 - 1929; (C) 1918 - 1921; (D) 1915 - 1928. (A) Form 85, quarterly and monthly report, showing condition of cemetery as to lodge, outhouses, flagstaff and flags, gun movements, number of lawn mowers, water supply, graves, headstones, and interments; (B) Form 1, monthly report of persons and articles hired, showing running number, names of persons, amount due, and amount unpaid; (C) showing station or command, riding and draft horses, draft and pack mules; (D) superintendent's monthly reports of forage or fuel, showing articles, unit, received, expended, and balance. (Never.) $3\frac{1}{2}$ x $8\frac{1}{2}$ sheets, 6 ft. 10 in., in wooden box. Dirty, torn. SE. corner, basement. (728)

79. CASH ACCOUNTS, 1906 - 1920. Showing allotments for labor, fuel, forage, shoeing mules, setting new headstones, roadway to cemetery, and miscellaneous supplies. Arranged chronologically. (Never.) 9 x 14 vols. (3), 3 in., on wooden shelf. Damaged by vermin, rodents, careless handling, dirty. SE. corner, basement. (725)

80. PROPOSALS AND SPECIFICATIONS, 1906 - 1922. QMC Form 125, proposal and specifications for forage, fuel, and tools, showing articles, number, quantity, and prices. Arranged chronologically. (Never.) $3\frac{1}{2}$ x $8\frac{1}{2}$ sheets, 1 ft. 1 in., in wooden box. Damaged by vermin, rodents, careless handling, dirty. SE. corner, basement. (726)

81. (A) CASH ACCOUNTS, (B) INVENTORY RECORDS, (C) DAILY LOG: (A) 1906 - 1920; (B) 1909 - 1917; (C) 1911 - 1923. (A) Showing allotments for labor, fuel, forage, shoeing mules, setting new headstones, roadway to cemetery, and miscellaneous supplies; (B) showing list of articles on hand; (C) showing summary of work done in cemetery. (Never.) 9 x 4 vols. (5), 6 in., on wooden shelf. Damaged by vermin, rodents, brittle, dirty, binding broken. SE. corner, basement. (724)

82. REQUISITIONS, 1908 - 1920. QMC Form 60, requisition for supplies, showing quantity on hand, consumed previous quarter, required, description of articles, estimated cost, remarks, quantity approved, and actual cost of articles supplied. Arranged chronologically. (Never.) $3\frac{1}{2}$ x $8\frac{1}{2}$ sheets, 1 ft., in wooden box. Damaged by vermin, rodents, careless handling, dirty. SE. corner, basement. (721)

83. PAY ROLLS, 1914 - 1922. QMC Form 12, for personal services, showing date, name, number, occupation, period of service, rate of pay, amount of pay, deductions, amount received, and remarks; Form 334, for civilian employees, showing pay roll number, branch division, bureau, organization, and distribution or appropriations. Arranged chronologically. (Never.) $3\frac{1}{2}$ x $8\frac{1}{2}$ sheets, 10 in., in wooden box. Damaged by vermin, rodents, careless handling, dirty, torn. SE. corner, basement. (727)

84. PURCHASE ORDERS, 1925 - 1928. QMC Form 308, purchase order for supplies, showing name of company supplies are purchased from, to whom shipped, quantity, unit, article, unit price, total price,

and inspection at destination. Arranged chronologically. (Never.) $3\frac{1}{2}$ x $8\frac{1}{2}$ sheets, 3 in., on wooden shelf. Damaged by vermin, rodents, careless handling, dirty. SE. corner, basement. (722)

85. REGISTRATIONS, 1928 - Apr. 1937. List of visitors, showing date, name, and residence. Arranged chronologically. (Frequently, official.) 12 x 16 vols. (13), 8 in., on table. NW. corner, 1st floor. (733)

86. TIME SHEETS OF EMPLOYEES, 1930 - 1932. Showing name, pay roll, title, dates not worked, number of days worked, rate of pay, amount earned, deductions, amount due, and signatures of employees. Arranged chronologically. (Frequently, official.) $3\frac{1}{2}$ x $8\frac{1}{4}$ sheets, 2 in., in drawer of steel filing case. NW. corner, 1st floor. (730)

87. CORRESPONDENCE, 1932 - 1936. Between Washington and officer in charge of cemetery, relative to building construction, headstone cleaning, guide service, flags, correction of records, wages, wild life, fire protection, pay rolls, purchases of supplies, and memorials. Filed by subjects. (Frequently, official.) 10 x 15 folders, 1 ft. 6 in., in 3 drawers of steel filing case. NW. corner, 1st floor. (729)

88. RECORD OF EXPENDITURES, 1932 - Apr. 1937. Showing amount expended, date, name, balance, and remarks. Arranged chronologically. (Frequently, official.) 12 x 18 vols. (12), 4 in., on wooden shelf. NW. corner, 1st floor. (731)

NATIONAL MILITARY PARK

Office of the Superintendent

Shirley House, Vicksburg National Military Park

The Vicksburg National Military Park was established February 21, 1899, and was under the direction of the War Department until August 11, 1933, when it was transferred to the Department of the Interior, National Park Service. Included among records of this office are historical data covering research work dating back to 1540 and maps for the period of 1698.

Temporary quarters are now maintained in the Shirley House, with a temporary building for the engineering force, while a new building is being erected, with a large vault especially designed for storage of valuable records.

Duplicate records are sent to the National Park Service, Washington. Originals are retained in this office and none has been lost or destroyed.

89. HISTORICAL DATA, RESEARCH WORK, 1540 - 1934. Informational and bibliographical material relating chiefly to the siege and defense of Vicksburg, 1863, and park history, 1899 - 1934. (Frequently, official.) $5\frac{1}{2}$ x $11\frac{1}{4}$ and $8\frac{1}{2}$ x $11\frac{1}{2}$ cards, 7 ft. 6 in., in 16 cardboard boxes and 1 bundle of 3 x 5 cards on shelf in cabinet. Basement, NE. corner. (41)

90. MISCELLANEOUS MAPS, 1698 - 1865. Copies of three maps of French period 1698 - 1792; three of Civil War period 1861 - 1865; and three of miscellaneous character. (Frequently, official.) Various sized maps (9), 3 in., in filing cabinet. Museum. (49)

91. MAPS, 1764 - 1864. Photostatic maps of battles fought during the Civil War 1864, and copies of manuscript maps, the originals of which are in records of Adams County 1764 - 1864. (Frequently, official.) 12 x 15 and 12 x 17 envelopes, $\frac{1}{2}$ in., in drawer of desk. Basement, SE. corner. (29)

92. MISCELLANEOUS MAPS, 1815 - 1933. Maps of Civil War operations including manuscript, photostatic, and electrographic maps of originals in records of Adams County, blueprint maps of Civil War operations and Vicksburg National Military Park, and ECW maps of inspection tours of Vicksburg National Military Park. (Frequently, official.) 11 x 13 and 33 x 58 maps (23), $\frac{3}{4}$ in., on shelf in cabinet. Basement, SE. corner. (27)

93. COURT RECORD BOOK, 1842 - 1850. Of circuit, supreme, and chancery court cases in Warren, Claiborne, and Washington Counties. (Rarely, official.) 8 x $12\frac{1}{2}$ bound vol., $\frac{1}{2}$ in., in drawer of filing case. Torn, binding broken, and damaged by careless handling. Basement, SE. corner. (20)

94. LEGAL DOCUMENTS AND PHOTOGRAPHS, Sept. 1851 - 1863. Original bill of sale of slaves 1851, Civil War period 1862 - 1863, and photographs of Civil War period. (Daily, official.) 6 in., in 3 sections of filing cabinet. Museum. (50)

95. MISCELLANEOUS LEGAL DOCUMENTS, Oct. 1854 - June 1934. Clippings, correspondence, photographs, Confederate bond, stamp, and ten and twenty-dollar bills. (Rarely, official.) Various sized envelopes (4), $4\frac{1}{2}$ in. Basement, SE. corner. (21)

96. FILM SLIDE LECTURES AND MAPS, 1861 - 1865. Typewritten lectures and hand-traced maps on Siege of Vicksburg. (Frequently, official.) $5\frac{1}{2}$ x $6\frac{1}{4}$ and 6 x 7 sheets and maps, $\frac{1}{2}$ in., in bookcase. Basement, SE. corner. (32)

97. MISCELLANEOUS MAPS, 1861 - 1865. Thirty blueprints, manuscripts, and black-lined printed maps of Vicksburg National Military Park during Civil War period. (Frequently, official.) Various sized maps, $\frac{1}{2}$ in., on shelf in cabinet. Basement, NE. corner. (42)

98. MISCELLANEOUS MAPS, Apr. 1862 - Nov. 1933. Six manuscripts, one blueprint, and six black-lined printed maps of Vicksburg National Park during Civil War operations. (Frequently, official.) Various sized maps, 1 ft. 9 in., in frames on wall. Basement, SE. corner. (28)

99. PROTOCOL, 1863. Original papers in the surrender of 1863. (Rarely, official.) 4 x 9 envelope, 1 in., on top of steel safe. Basement, SE. room. (81)

100. INSCRIPTIONS, RECORDS OF, Mar. 1863 - July 1863. On Union markers, tablets, batteries, and monuments in Vicksburg National Military Park. (Daily, official.) 9 x 12 folders (7), 3½ in., on shelf in filing cabinet. Basement, SE. corner. (30)
101. CORRESPONDENCE, Feb. 1863 - Apr. 1865. Official letters sent by Dr. J. D. Barnett, Chief Surgeon, 3rd Mississippi District, which are handwritten in a book entitled, Lawyers' Commonplace Book, pages 1-167, rest of book not numbered. (Rarely, official.) 8 x 10 bound vol., 1¼ in., on shelf in bookcase. Basement, SE. corner. (25)
102. MISCELLANEOUS MAPS, 1863 - 1933. Topographical prints of maps made by army engineers during Civil War, maps, tracings, plans, and specifications of monuments, bridges, property, roads, gun carriages, buildings, sewerage disposal, campaigns, regions, expeditions, and various other subjects. (Daily, official.) Various sized maps, 3 ft., in 6 wooden and 3 metal filing cases. Basement, NW. corner. (52, 53, 54)
103. MISCELLANEOUS RECORDS, 1899 - 1936. Original construction plans, specifications, and contracts for erection of monuments and memorials, copies of deeds for park and cemetery, and easements or permits for utilities for park and cemetery. (Frequently, official.) Various sized folded sheets, 12 ft., in 9 drawers of steel safe. Basement, SE. room. (78)
104. GENERAL FILES, 1899 to date. Consists of correspondence, reports, vouchers, personnel records, bills and pay rolls listed as correspondence. (Rarely, official.) 10 x 12 bound vols. (208), 6 x 9 paper folders (23), 42 ft., in 62 wooden and 4 cardboard boxes. Brittle, torn, and bindings broken. Attic. (55)
105. DEEDS AND LEGAL DOCUMENTS, 1900 - 1936. Correspondence pertaining to establishment of park. Filed alphabetically. (Daily, official.) 10 x 12 folders, 4 ft. 2 in., in 2 drawers of steel filing case. Administrative office. (79)
106. PARK, PWA, AND ECW PERSONNEL RECORDS, 1900 - 1936. Appointments, correspondence, vouchers, and all records pertaining to classified and nonclassified personnel. Filed alphabetically. (Daily, official.) 10 x 12 folders, 4 ft. 2 in., in 2 drawers of steel filing case. Administrative office. (80)
107. MISCELLANEOUS CORRESPONDENCE, (A) 1900, and (B) 1935 - 1936. (A) Special field notes, copies of deeds, and correspondence concerning Garbish property; (B) appraisals and options on land for additions to cemetery with names of owners of property. (Occasionally, official.) 10 x 12 envelopes, 6 in., on top of steel safe. Basement, SE. corner. (82)
108. GENERAL FILE, 1931 - 1936. Reports and correspondence pertaining to history, legislation, administration, personnel, appropriations, finance, accounts, supplies, equipment, publicity, and statistics, reports from all departments, vouchers, reports of

uniforms, equipment, lands, buildings, roads, trails, bridges, Chalmette National monument, and miscellaneous correspondence. Filed by decimal system in use of National Park Service. (Daily, official.) 10 x 12 folders, 19 ft., in 9 drawers of steel filing cases. Administrative office. (56)

109. REPORTS, June 1933 - Apr. 1934. On Emergency Conservation Work in park by historical technician. (Frequently, official.) 8 x 10 $\frac{1}{2}$ booklets, $\frac{1}{4}$ in., in wire basket on desk. Basement, SE. corner. (26)

110. REFERENCE BOOKS, Sept. 1933 - Apr. 1934. Two books on park history and projects, pages 1-185 and 1-95, and four books on miscellaneous historical data, pages not numbered. (Daily, official.) 10 x 14 and 9 x 11 paper and cardboard books (6), 8 $\frac{1}{2}$ in., on shelf in cabinet. Basement, SE. corner. (31)

111. MISCELLANEOUS CORRESPONDENCE AND REPORTS, Nov. 1933 - May 1934. Correspondence, bibliographies, and research reports. (Frequently, official.) 8 $\frac{1}{2}$ x 11 paper binder (2), 3 in. Basement, SE. corner. (24)

112. LEDGER BOOKS, Nov. 1933 - Aug. 1936. Allotment advices received and vouchers issued. Indexed. (Daily, official.) 11 x 16 bound and three unbound books, 5 in., in drawer of desk. Basement, NW. corner. (51)

113. DAILY REGISTER, Aug. 1933 - July 1936. Of visitors to the museum by states. (Daily, official.) 9 $\frac{1}{2}$ x 12 folders, 8 $\frac{1}{2}$ in., in drawer of bookcase. Basement, SE. corner. (36)

114. GENERAL CORRESPONDENCE, June 1933 - Aug. 1936. Received and sent. Filed by subjects. (Frequently, official.) 9 x 12 folders, 8 ft. 2 in., in 6 drawers of filing cabinet. NE. corner. (38)

115. CARD RECORD, INCOMPLETE, 1933 - 1936. Guide to monuments and memorials in park and records of documents, maps, and Rigby collection in park, of Jackson Library and accession record for new museum. (Monthly, official.) Various sized cards, 3 ft. 9 in., in 6 cardboard boxes. Basement, SE. corner. (22)

116. ECW REPORTS AND CORRESPONDENCE, 1933 - 1936. On equipment, inventories, forestry, fire prevention records, reports and miscellaneous information. Filed alphabetically. (Daily, official.) 10 x 12 folders, 6 ft. 3 in., in 3 drawers of steel filing case. Administrative office. (77)

117. MAPS, 1933 - 1936. Master plans, Chalmette prints, park maps, ECW maps, private driveways, bridges, alienated lands, signs, drainage plans, contact station, national cemetery, Shirley House, and state parks. (Daily, official.) Various sized maps, in map cabinet. Col. Heider's office. (57)

118. (A) PWA RECORDS, (B) NARRATIVE REPORTS, 1933 - 1936. (A) Correspondence, reports, vouchers, pay rolls pertaining to PWA work in the park; (B) monthly narrative reports covering park operations. Filed alphabetically. (Daily, official.) 10 x 12 folders, 4 ft. 2 in., in 2 drawers of steel filing case. Administrative office. (76)

119. MONUMENT REPORTS, 1934 - 1936. Of field surveys. (Frequently, official.) $9\frac{1}{2}$ x 12 folders (35), 10 in., on shelf in bookcase. NE. corner. (37)

120. LANTERN SLIDES, n. d. Depicting scenes of Civil War happenings in Vicksburg and other places. (Occasionally, official.) $3\frac{1}{2}$ x 4 slides, 1 ft. 9 in., in 4 cardboard boxes. Basement, SE. corner. (12)

121. PHOTOGRAPHS, n. d. Of monuments, memorials, and scenes in park during Civil War. (Rarely, official.) 12 x 15 envelopes (5), $3\frac{1}{2}$ in., in drawer of desk. Basement, SE. corner. (23)

THE OFFICE OF INDIAN AFFAIRSPHILADELPHIACHOCTAW INDIAN AGENCY
Office of the Superintendent
One Mile East of Philadelphia

The Choctaw agency of the United States Indian Field Service was established in 1918 with quarters one mile east of business section of the town of Philadelphia on the Choctaw Reservation. The affairs of the reservation, or agency, are conducted by a superintendent responsible to the Commissioner of Indian Affairs at Washington.

All records previous to 1925 were destroyed by termites from being stored in damp basement of office buildings. All other records are retained and none has been sent to Washington. However, some research records, of military activities, made in 1925, date as far back as 1917.

122. RECORDS OF MILITARY ACTIVITIES, 1917 - 1936. Of Indian military activities, Indians in World War, army and navy, in national guard, as scouts, and other military activities and training. Filed chronologically and numerically under file 600-699. (Occasionally, official.) 8 x 11 folders, 4 ft., in 2 drawers of steel filing case. R. not numbered. (7)

123. ACCOUNTS, INDIAN AFFAIRS, 1925 - 1936. Covering cash transactions between the department and individuals living under jurisdiction of the agency. Filed chronologically and numerically. (Rarely, official.) 5 x 7 and 6 x 9 folders, and 8 x 12 covers, 15 ft., in 4 drawers of steel filing case, 4 drawers of steel card cabinet, and 2 wooden bins. R. not numbered. (11)

124. ADMINISTRATION AND CONTROL, 1925 - 1936. Covering rules, regulations, policy, establishment of schools, agencies, communications, inspections, investigations, officers, employees, law, and transportation of passengers. Filed chronologically and numerically under file 100-199. (Daily, official.) 8 x 11 folders, 4 ft., in 2 drawers of steel filing case. R. not numbered. (2)

125. RECORDS OF BUILDINGS AND BUILDING EQUIPMENT, 1925 - 1936. Covering agency buildings, equipment, plans, drawings, blueprints, school buildings, libraries, hospital, nurses' home, PVA projects, schedule of repairs, and six-year program. Filed chronologically and numerically under file 400-499. (Daily, official.) 8 x 11 folders, 4 ft., in 2 drawers of steel filing case. R. not numbered. (5)

126. EDUCATION, 1925 - 1936. Reports on and of teachers, pupils, teaching and training, games, conferences, day school inspector's reports, school supervisor's reports, and a collection of miscellaneous educational activities. Filed chronologically and numerically under file 800-899. (Daily, official.) 8 x 11 folders, 4 ft. 2 in., in 3 drawers of steel filing case. R. not numbered. (9)

127. FINANCE AND ACCOUNTS, 1925 - 1936. Correspondence and records covering funds, appropriations, cash accounts, reimbursable accounts, general agency accounts, annuities, claims, sales, contracts, and other miscellaneous matters. Filed chronologically and numerically under file 200-299. (Daily, official.) 8 x 11 folders, 4 ft., in 2 drawers of steel filing case. R. not numbered. (3)

128. GENERAL AND STATISTICAL PAPERS, 1925 - 1936. Covering publications, legislation, departmental relations, publicity, reforestation, statistics, tribal relations, and Indian customs, and organizations interested in Indians. Filed numerically under file 000-099. (Daily, official.) $8\frac{1}{2}$ x 11 folders, 4 ft., in 2 drawers of steel filing case. R. not numbered. (1)

129. RECORDS OF HEALTH AND SOCIAL RELATIONS, 1925 - 1936. Covering sanitation, asylums, number of blind, relief work, institutions, diseases, injuries, social relations, marriages, births, deaths, burials, amusements, athletics, foods, diets, and staff meetings. Filed chronologically and numerically under file 700-799. (Daily, official.) 8 x 11 folders, 2 ft. 8 in., in 2 drawers of steel filing case. R. not numbered. (8)

130. RECORDS OF INDUSTRIES AND EMPLOYMENT, 1925 - 1936. Complete check on occupations, showing how Indians are employed, whether agriculturally, industrially, trapping, hunting, fishing, stock raising, lumbering, mining, or manufacturing. Filed chronologically and numerically under file 900-999. (Daily, official.) 8 x 11 folders, 1 ft. 2 in., in 2 drawers of steel filing case. R. not numbered. (10)

131. RECORD OF LANDS, 1925 - 1936. Showing agency's policy covering the transfer, leasing, acquisition, and allotment of lands, analysis of resources, developments, improvements, estates, rights-of-way, and Indian homesteads. Filed chronologically and numerically under file 300-399. (Daily, official.) 8 x 11 folders, 4 ft., in 2 drawers of steel filing case. R. not numbered. (4)

132. RECORDS OF SUPPLIES AND LIVESTOCK, 1925 - 1936. Showing transactions in regard to supplies for agency, such as, annual estimates, markets, correspondence to and from markets, bids, contracts, repairs, improvements, and transportation of livestock to different sections under agency's jurisdiction, also purchases and sales. Filed chronologically and numerically under file 500-599. (Daily, official.) 8 x 11 folders, 4 ft., in 2 drawers of steel filing case. R. not numbered. (6)

