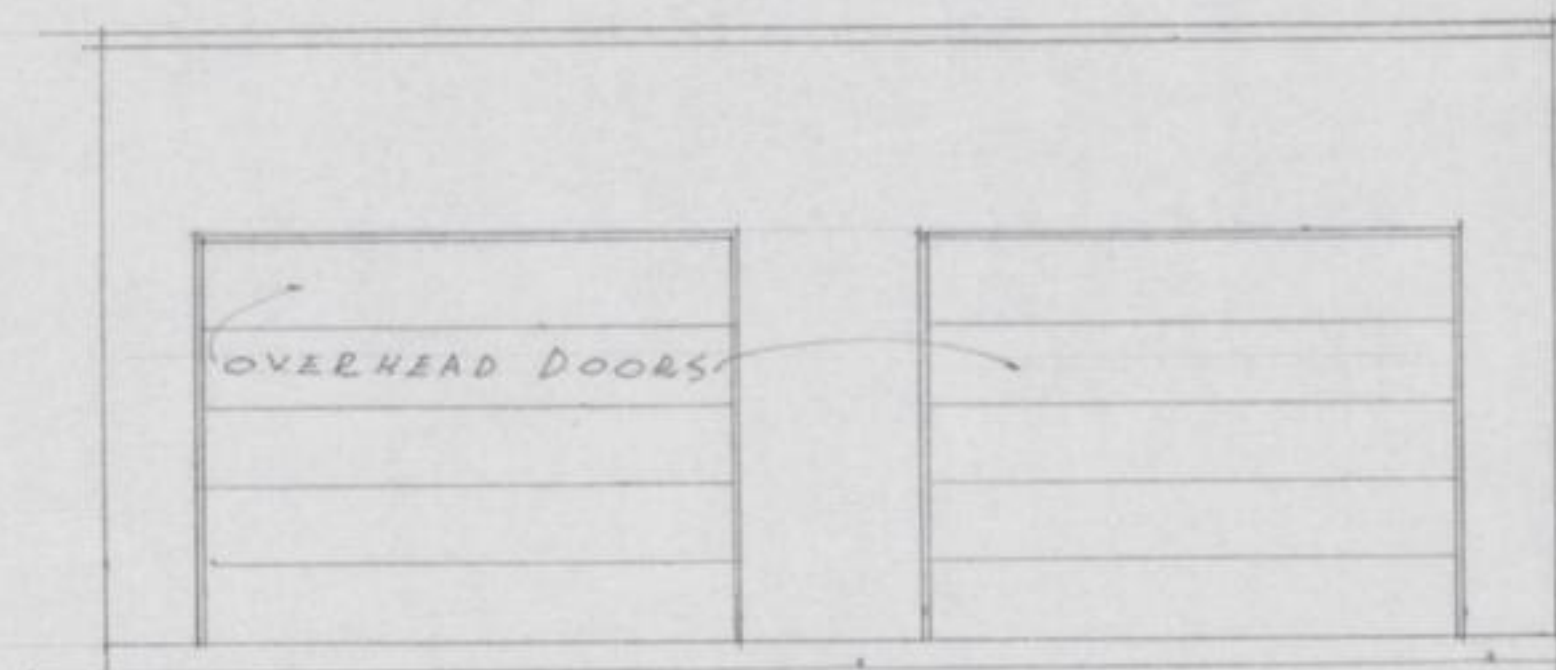
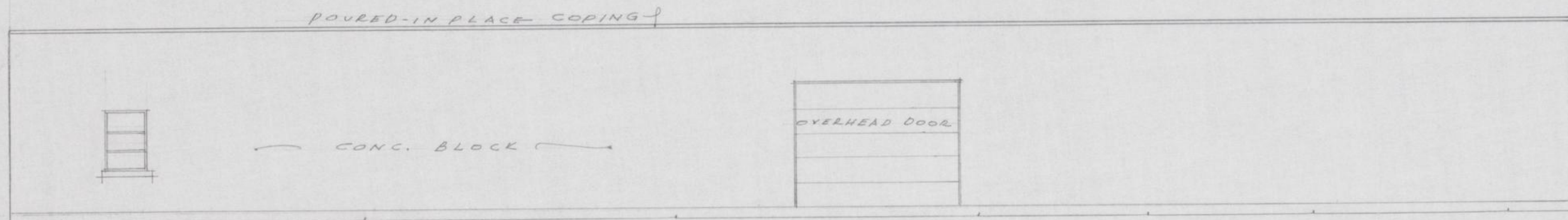




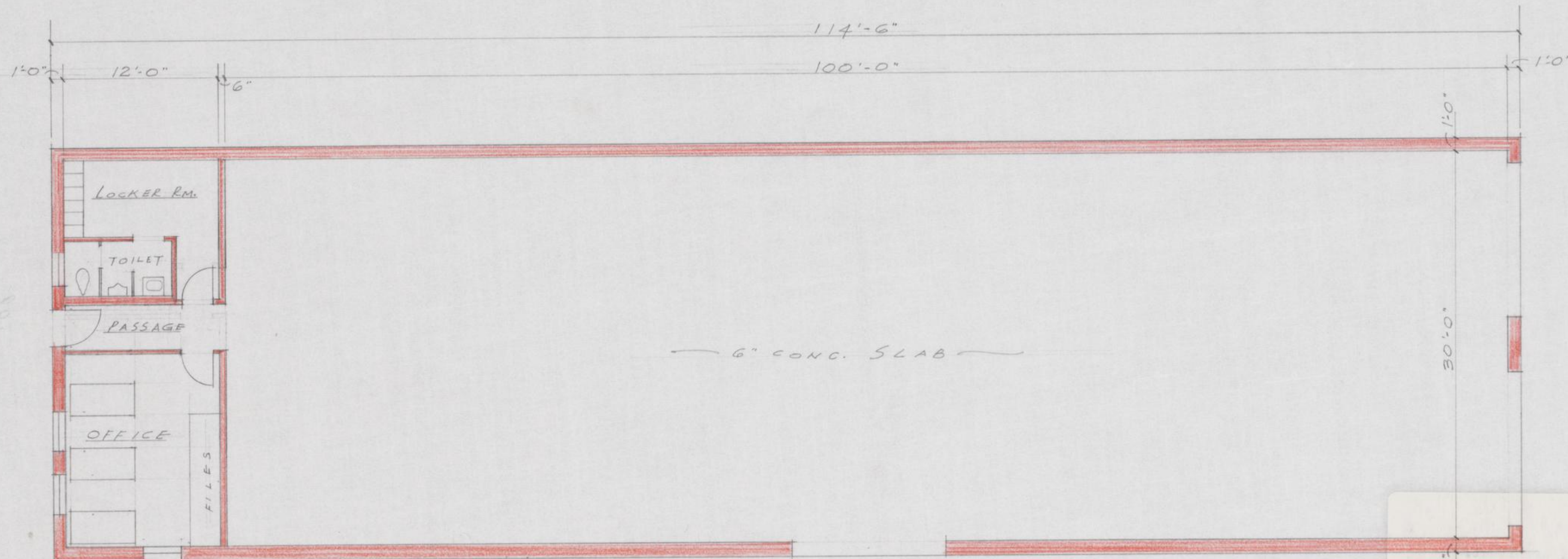
CROSS SECTION



END ELEVATION



SIDE ELEVATION  
Sc. 8" = 1'-0"



FLOOR PLAN  
Sc. 8" = 1'-0"

ROBERT W. MEMEIKIN - ARCHITECT  
LEXINGTON KENTUCKY  
DEC. 10, 1956

PROPOSED WAREHOUSE  
FOR  
KENTUCKY UTILITIES COMPANY  
DANVILLE