

Minutes of the Meeting of the Board of Trustees of the University of Kentucky, Tuesday, October 20, 1987.

The Board of Trustees of the University of Kentucky met at 1 p.m. Lexington time on Tuesday, October 20, 1987 in the Board Room on the 18th floor of the Patterson Office Tower on the Lexington Campus.

A. Meeting Opened

Mr. Robert T. McCowan, Chairman, called the meeting to order at 1:00 p.m., and the invocation was pronounced by Mr. Ted Bates.

B. Roll Call

The following members of the Board of Trustees answered the call of the roll: Mr. Robert T. McCowan (Chairman), Mr. Ted B. Bates, Professor Raymond F. Betts, Governor Albert B. Chandler, Mr. Albert G. Clay, Professor Mary Sue Coleman, Professor David R. Driscoll, Jr., Mr. Lawrence E. Forgy, Jr., Mr. Henry E. Hershey, Mr. T. A. Lassetter, Mr. Frank Ramsey, Jr., Mr. James L. Rose, Mr. Jerome A. Stricker, Judge Julia K. Tackett, Mr. Bobby Watson, Ms. Cyndi Weaver, and Mr. Billy B. Wilcoxson. Absent from the meeting were Mr. Tracy Farmer, Mr. George W. Griffin, Jr., Mrs. Edythe Jones Hayes, Senator Walter D. Huddleston, Mr. Brereton C. Jones, Mr. R. Larry Jones, and Dr. Nicholas J. Pisacano. The University administration was represented by President David P. Roselle; Mr. Edward A. Carter, Vice President for Administration; Chancellors Peter P. Bosomworth, Art Gallaher and Charles T. Wethington; Dr. Raymond R. Hornback, Vice President for University Relations; Mr. Eugene R. Williams, Acting Vice President for Information Systems; Mr. John C. Darsie, Legal Counsel.

Members of the news media were also in attendance. A quorum being present, the Chairman declared the meeting officially open for the conduct of business at 1:02 p.m.

C. Minutes Approved

On motion made by Judge Tackett, seconded by Professor Coleman and passed, the Minutes of the September 15, 1987 meeting of the Board of Trustees were approved as written.

D. President's Report to the Trustees (PR 1)

President Roselle reviewed briefly some of the items in PR 1, calling special attention to (1) the UK Aeromedical Service program, (2) the celebration of 150 new University of Kentucky Fellows, (3) the Helen Hayes benefit for the College of Fine Arts, (4) the honors freshmen keeping a four-year intellectual journal, and (5) the awarding of medallions to four persons chosen by a special committee named by the Alumni Board: Bob Bell, Mary Brumfield, William Francis, and Sherman Dozier.

President Roselle announced that the Kentucky Advocates for Higher Education and the Governor of Kentucky are hosting a luncheon and a day of celebration for some of the outstanding alumni of Kentucky on October 28. The University of Kentucky's designee for the Outstanding Alumnus of Kentucky Award will be Dr. Joseph Boyd.

E. Personnel Actions (PR 2)

In recommending approval of the appointments and staff changes in PR 2, President Roselle called attention to the appointment of Joan E. McCauley, Associate Vice President for Planning and Budget. Mr. Edward Carter reviewed briefly Ms. McCauley's professional career, and Ms. McCauley was asked to stand and be recognized.

President Roselle also called attention to the appointment of Dr. William A. Gruver, Director of the Center for Robotics and Manufacturing Systems. Chancellor Gallaher reviewed Dr. Gruver's credentials and experience and indicated his pleasure in recommending the appointment. Dr. Gruver was asked to stand and be recognized, following which he was given a round of applause.

President Roselle then indicated that the groundbreaking ceremony for the Center for Robotics and Manufacturing Systems is scheduled for December 1 and Governor Collins will be in attendance.

On motion made by Mr. Stricker, seconded by Judge Tackett and carried, the appointments and staff changes recommended in PR 2 were approved. (See PR 2 at the end of the Minutes.)

F. Increase in Student Activities Fees (PR 3B)

President Roselle recommended that the Board approve an increase in the Student Activities Fees from \$38.75 to \$39.75 effective fall semester, 1988, and that the additional dollar go to finance the yearly operational expenses of WRFL (Radio Free Lexington). The motion, which was made by Ms. Weaver and seconded by Mr. Bates, was voted on and carried unanimously. (See PR 3B at the end of the Minutes.)

G. Amendments to the Governing Regulations (PR 3C)

Mr. Clay moved, and Mr. Lassetter seconded, that the proposed amendments to the Governing Regulations in PR 3C, which were received by the Board of Trustees at its September 1987 meeting, be approved. The motion carried unanimously. (See PR 3C at the end of the Minutes.)

H. Policy Statement Regarding Business Competition (PR 3D)

With President Roselle so recommending, Mr. Ramsey moved that the Board adopt the policy statement regarding business competition. The motion was seconded by Mr. Wilcoxson and carried. (See PR 3D at the end of the Minutes.)

I. Change in Administrative Titles - University of Kentucky
Community College System (PR 4A)

On recommendation of Chancellor Wethington and with the concurrence of President Roselle, Professor Driscoll moved that the title of the chief academic and administrative officer of each University of Kentucky Community College be changed from Director to President and that titles Associate and Assistant Director be changed to Dean. His motion was seconded by Judge Tackett and carried. (See PR 4A at the end of the Minutes.)

J. Appointments to University of Kentucky/Business Partnership
Foundation (PR 5A)

President Roselle recommended that approval be given to the appointment of C. Merwin Grayson, Jr., Robert E. Lee, Jr. and Zack C. Saufley to membership on the Board of Directors of the University of Kentucky/Business Partnership Foundation for terms beginning with the fall 1987 meeting and ending with the spring 1991 meeting. Mr. Stricker so moved. The motion was seconded by Mr. Clay and unanimously carried. (See PR 5A at the end of the Minutes.)

K. Ernst & Whinney Professorship of Accounting (PR 5B)

President Roselle stated he was pleased to recommend that the Board establish in the School of Accountancy, College of Business and Economics, the Ernst & Whinney Professorship of Accounting. The motion was seconded by Professor Coleman and unanimously carried. (See PR 5B at the end of the Minutes.)

L. Patent Assignment - Lexington Campus (PR 5C)

Mr. Forgy moved, and Mr. Farmer seconded, that the routine patent assignment in PR 5C be approved. The motion carried without dissent. (See PR 5C at the end of the Minutes.)

M. Appointments to Advisory Board - Center for Robotics and
Manufacturing Systems (PR 5D)

On motion made by Judge Tackett, seconded by Professor Betts and passed, the Board approved the establishment of an Advisory Board to advise President Roselle on matters relating to the Center for Robotics and Manufacturing Systems. (See PR 5D at the end of the Minutes.)

N. Approval of Reorganization - College of Dentistry (PR 6A)

On recommendation of Chancellor Bosomworth and with the concurrence of President Roselle, Mr. Ramsey moved that the Board approve the reorganization of the eleven existing departments in the College of Dentistry into two new departments, the Department of Oral Health Practice and the Department of Oral Health Science. His motion was seconded by Professor Betts and carried. (See PR 5D at the end of the Minutes.)

O. PR 6B was Withdrawn

P. Acceptance of Interim Financial Report for the University of Kentucky for the Two Months Ended August 31, 1987 (FCR 1)

Mr. Forgy, Chairman of the Finance Committee, reported that the Committee met on the morning of October 20 and reviewed the four items to be presented for action. He then recommended and moved that the Board accept the University of Kentucky consolidated financial report for the two months ended August 31, 1987. The motion was seconded by Mr. Clay and unanimously carried. (See FCR 1 at the end of the Minutes.)

Q. Acceptance of the Financial Statements of the University of Kentucky and Affiliated Corporations and Other Related Organizations for the Year Ended June 30, 1987 (FCR 2)

With the concurrence of the Finance Committee, Mr. Forgy recommended:

that the Board of Trustees accept the audited financial statements of the University of Kentucky including the Management Letter and a Report on Compliance with House Bill 622, and separate financial statements for the Housing and Dining System, the Tobacco and Health Research Institute, and the University Hospital, for the year ended June 30, 1987; and

that the Board of Trustees accept the audited financial statements of the affiliated corporations and other related organizations of the University of Kentucky including The Fund for Advancement of Education and Research in the University of Kentucky Medical Center, University of Kentucky Research Foundation, University of Kentucky Athletic Association, University of Kentucky Business Partnership Foundation, Inc., University of Kentucky Mining Engineering Foundation, Inc., University of Kentucky Equine Research Foundation, Inc., University of Kentucky Humanities Foundation, Inc., Health Care Collection Service, Inc., University of Kentucky Alumni Association, and University of Kentucky Hospital Auxiliary for the year ended June 30, 1987.

The motion was seconded by Mr. Ramsey and carried without dissent. (See FCR 2 at the end of the Minutes.)

R. Disposal of Personal Property (FCR 3)

On motion made by Mr. Forgy, seconded by Mr. Wilcoxson and carried, the Board approved the disposition of surplus vehicles by public auction on November 7, 1987. (See FCR 3 at the end of the Minutes.)

S. Establishment of Quasi-Endowment for the University of Kentucky Theatre Enrichment Fund (FCR 4)

With the concurrence of the Finance Committee, Mr. Forgy recommended and so moved that the Board authorize the creation of a quasi-endowment fund to be entitled the "Department of Theatre Enrichment Fund." The motion was seconded by Professor Betts and carried without dissent. (See FCR 4 at the end of the Minutes.)

T. Meeting Adjourned

There being no further business to come before the Board, the Chairman adjourned the meeting at 1:36 p.m.

Respectfully submitted,

John C. Darsie
Assistant Secretary
Board of Trustees

(PR's 2, 3B, 3C, 3D, 4A, 5A, 5B, 5C, 5D, 6A, 6B (Withdrawn), and FCR's 1, 2, 3, and 4 which follow are official parts of the Minutes of the meeting.)

Office of the President
October 20, 1987

PR 2

Members, Board of Trustees:

PERSONNEL ACTIONS

Recommendation: (1) that approval be given to the attached appointments and/or other staff changes which require Board action; and (2) that the report relative to appointments and/or changes already approved by the administration be accepted.

Background: The attached recommended appointments and/or other staff changes require approval by the Board of Trustees in accordance with Part VIII-B of the Governing Regulations of the University. These recommendations are transmitted to the Board by the appropriate chancellor through the President and have his concurrence.

Under the Governing Regulations, the authority to make certain appointments and/or other staff changes is delegated to the President or other administrators who are required to report their actions to the Board. This report follows the recommendations requiring Board approval.

Action taken: Approved Disapproved Other

Date: October 20, 1987

0197

CENTRAL ADMINISTRATION

I. BOARD ACTION

A. ADMINISTRATIVE APPOINTMENT

Office of Planning and Budget

McCauley, Joan E., Acting Associate Vice
President for Planning and Budget appointed
Associate Vice President for Planning and Budget,
effective November 1, 1987

B. CHANGE IN TITLE

Office of Facilities Planning and Management

Carter, David I., from Associate Vice President for
Business Services to Associate Vice President for
Facilities Planning and Management, effective
October 5, 1987

II. ADMINISTRATIVE ACTION

A. ADMINISTRATIVE APPOINTMENTS

University Relations

Taylor, Deborah W., Development Assistant II,
Development Office, effective October 1, 1987

Vice President for Information Systems

Chlopan, Richard R., Senior Data Base Administrator,
effective August 31, 1987

COMMUNITY COLLEGE SYSTEM

I. BOARD ACTION

A. POST-RETIREMENT APPOINTMENT

Southeast Community College

Dale, Gertrude, Librarian IV in the Community College System, 9/14/87 through 12/31/87.

II. ADMINISTRATIVE ACTION

A. ACADEMIC APPOINTMENTS

Ashland Community College

Brake, Marie, Instructor in the Community College System, 8/20/87 through 6/30/88.

Elahjji, Salhin, Instructor in the Community College System, 8/1/87 through 12/31/87.

Goodale, Jane M., Instructor in the Community College System, 8/1/87 through 6/30/88.

Niestroy, Sue A., Instructor in the Community College System, 9/1/87 through 6/30/88.

Jefferson Community College

Cahill, Christopher, Instructor in the Community College System, 8/20/87 through 6/30/88.

Freeman, Patricia S., Instructor in the Community College System, 9/15/87 through 12/31/87.

Lexington Community College

Coulston, Charles, Instructor in the Community College System, 9/9/87 through 6/30/88.

Farris, James K., Instructor in the Community College System (voluntary), 8/26/87 through 6/30/88.

Green, Perry G., Instructor in the Community College System (voluntary), 8/26/87 through 6/30/88.

Highland, Denise, Instructor in the Community College System (voluntary), 8/26/87 through 6/30/88.

Knapp, Karen K., Instructor in the Community College System (voluntary), 8/26/87 through 6/30/88.

Matchuny, James K., Instructor in the Community College System, 9/21/87 through 6/30/88.

Minton, Charlene L., Instructor in the Community College System (voluntary), 8/26/87 through 6/30/88.

Perkins, Barbara, Instructor in the Community College System, 9/1/87 through 6/30/88.

Madisonville Community College

Conti, Rose, Assistant Professor in the Community College System, 8/31/87 through 6/30/88.
Wortham, Toni, Assistant Professor in the Community College System, 8/24/87 through 6/30/88.

Owensboro Community College

Jennison, Marla, Instructor in the Community College System, 8/26/87 through 12/31/87.
Payne, P. Thomas, Instructor in the Community College System, 8/1/87 through 6/30/88.

Prestonsburg Community College

Caudill, Rose W., Instructor in the Community College System, 9/14/87 through 6/30/88.
Hensley, Maureen, Instructor in the Community College System, 9/14/87 through 6/30/88.

Somerset Community College

Khondker, R. Karim, Assistant Professor in the Community College System, 8/24/87 through 6/30/88.
Patel, Amrit, Assistant Professor in the Community College System, 8/1/87 through 6/30/88.
Roberts, Judy, Instructor in the Community College System (voluntary), 6/1/87 through 5/31/88.

B. REAPPOINTMENTS

Lexington Community College

Baker, Keith, Instructor in the Community College System (voluntary), 8/26/87 through 6/30/88.
Brown, Thomas K., Instructor in the Community College System (voluntary), 8/26/87 through 6/30/88.
Carroll, Wesley, Instructor in the Community College System (voluntary), 8/26/87 through 6/30/88.
Cloyd, Patty S., Assistant Professor in the Community College System (voluntary), 8/26/87 through 6/30/88.
Collins, Barry R., Instructor in the Community College System (voluntary), 8/26/87 through 6/30/88.
Eads, Joe L., Instructor in the Community College System (voluntary), 8/26/87 through 6/30/88.
Gade, Barbara, Assistant Professor in the Community College System (voluntary), 8/26/87 through 6/30/88.

Hall, Ray, Instructor in the Community College System (voluntary), 8/26/87 through 6/30/88.
Heath, Anne L., Instructor in the Community College System (voluntary), 8/26/87 through 6/30/88.
Henry, Robert G., Instructor in the Community College System (voluntary), 8/26/87 through 6/30/88.
Holland, William O., Instructor in the Community College System (voluntary), 8/26/87 through 6/30/88.
King, Darryl, Instructor in the Community College System (voluntary), 8/26/87 through 6/30/88.
Kissman, Rick, Instructor in the Community College System (voluntary), 8/26/87 through 6/30/88.
Little, Stephen, Instructor in the Community College System (voluntary), 8/26/87 through 6/30/88.
McCrady, Rosemary, Instructor in the Community College System (voluntary), 8/26/87 through 6/30/88.
Scully, Bridget S., Instructor in the Community College System (voluntary), 8/26/87 through 6/30/88.
Vice, Leisha S., Instructor in the Community College System (voluntary), 8/26/87 through 6/30/88.
Wilcox, David G., Instructor in the Community College System (voluntary), 8/26/87 through 6/30/88.
Wolverton, Lloyd K., Instructor in the Community College System (voluntary), 8/26/87 through 6/30/88.
Younger, Robyn S., Instructor in the Community College System (voluntary), 8/26/87 through 6/30/88.

Somerset Community College

Brumback, Michael, Instructor in the Community College System (voluntary), 6/1/87 through 5/31/88.
Eaton, Kenny, Instructor in the Community College System (voluntary), 6/1/87 through 5/31/88.
Galloway, Debbie, Instructor in the Community College System (voluntary), 6/1/87 through 5/31/88.
Girdler, Sara, Instructor in the Community College System (voluntary), 6/1/87 through 5/31/88.
Leis, Charlotte, Instructor in the Community College System (voluntary), 6/1/87 through 5/31/88.
Meade, Ricky, Instructor in the Community College System (voluntary), 6/1/87 through 5/31/88.
Ratliff, Donna, Instructor in the Community College System (voluntary), 6/1/87 through 5/31/88.
Singleton, Debbie, Instructor in the Community College System (voluntary), 6/1/87 through 5/31/88.
Strunk, Cynthia, Instructor in the Community College System (voluntary), 6/1/87 through 5/31/88.
Taylor, Peggy, Instructor in the Community College System (voluntary), 6/1/87 through 5/31/88.

Wade, Tim, Instructor in the Community College System (voluntary), 6/1/87 through 5/31/88.
Weaver, Bob, Instructor in the Community College System (voluntary), 6/1/87 through 5/31/88.
Wilson, Paul, Instructor in the Community College System (voluntary), 6/1/87 through 5/31/88.
Winchester, Lula, Instructor in the Community College System (voluntary), 6/1/87 through 5/31/88.
Wright, Bob E., Instructor in the Community College System (voluntary), 6/1/87 through 5/31/88.

C. CHANGES

Madisonville Community College

Morrison, George H., Assistant Professor in the Community College System, 8/1/87 through 6/30/88.
(Note: change from Instructor in the Community College System, as reported 9/15/87.)

Prestonsburg Community College

Trimble, Dawn M., Assistant Professor in the Community College System, 8/1/87 through 6/30/88.
(Note: change from Instructor in the Community College System, as reported 4/7/87.)

D. LEAVES OF ABSENCE

Elizabethtown Community College

Mayhew, Linda N., Professor in the Community College System (with tenure), sabbatical leave at full salary, spring semester 1988.

Henderson Community College

Bowman, Arlene M., Associate Professor in the Community College System (with tenure), sabbatical leave at full salary, spring semester 1988.

Hopkinsville Community College

Frising, Marjanna, Librarian II in the Community College System (with tenure), extension of sick leave with pay, 9/1/87 through 9/31/87.

LEXINGTON CAMPUS

I. BOARD ACTION

A. ACADEMIC APPOINTMENTS

College of Agriculture

Cothran, Ernest G., Assistant Research Professor, Veterinary Science, 7/1/87 through 6/30/88.

Trembicki, Kathryn A., Assistant Research Professor, Veterinary Science, 7/1/87 through 6/30/88.

College of Arts and Sciences

Kil, Soong-Hoom, Visiting Associate Professor, Political Science, 8/16/87 through 5/31/88.

College of Engineering

Chren, William A., Jr., Assistant Professor, Electrical Engineering, 8/1/87 through 6/30/89.

Gruver, William A., Research Professor, Electrical Engineering, 12/1/87 through 11/30/90.

Hejase, Hassan Abdel-Nassar, Assistant Professor, Electrical Engineering, 8/16/87 through 6/30/89.

Ward, Kimberly A., Assistant Professor, Chemical Engineering, 8/16/87 through 6/30/89.

Graduate School

Toma, Fugenia F., Associate Professor (with tenure), James W. Martin School of Public Administration, effective 8/16/87.

B. ADMINISTRATIVE APPOINTMENTS

College of Engineering

Gruver, William A., Research Professor, Electrical Engineering, appointed Director of the Center for Robotics and Manufacturing Systems, effective 12/1/87.

C. REAPPOINTMENTS

College of Arts and Sciences

Stiles, Martin, Adjunct Professor, Chemistry, 7/1/87 through 6/30/89.

D. PROMOTIONS

College of Arts and Sciences

Truszczynski, Miroslaw, from Assistant Professor (without tenure), Computer Science, to Associate Professor (with tenure), Computer Science, effective 11/1/87.

College of Education

Shapiro, Robert, from Assistant Professor (without tenure), Health, Physical Education, and Recreation, to Associate Professor (with tenure), Health, Physical Education, and Recreation, effective 7/1/87.

College of Library and Information Science

Rogers, JoAnn V., from Associate Professor (with tenure), to Professor (with tenure), effective 7/1/87.

E. RETIREMENTS

College of Agriculture

Brown, Antoinette M., Account Clerk V, Agronomy, after 20 consecutive years of service, under Section II.B of AR II-1.6-1, effective 1/4/88.

College of Education

Gardner, Jess, Associate Professor (with tenure)*, Health, Physical Education, and Recreation. To change effective date of retirement from 6/30/87 to 10/15/87, under Section II.B of AR II-1.6-1.

F. EARLY RETIREMENTS

Vice Chancellor for Administration

Figgs, Richard M., Custodial Supervisor, Services, Physical Plant Division, to transfer status from II.E of AR II-1.6-1 to II.A.1(b) of AR II-1.6-1, effective 10/1/87.

G. POST-RETIREMENT APPOINTMENTS

Vice Chancellor for Administration

Bowman, W. Shelby, Senior Retirement Officer, Employee Benefits and Risk Management, 9/1/87 through 6/30/88.

II. ADMINISTRATIVE ACTION

A. ACADEMIC APPOINTMENTS

College of Agriculture

Bhatt, Daksha P., Visiting Professor, Agronomy, 8/1/87 through 3/31/88.

*Special Title Series

Nie, Junhua, Visiting Scholar, Agronomy, 8/17/87 through 8/15/88.
Russell, Virginia L., Instructor (part-time), Horticulture and
Landscape Architecture, 9/1/87 through 12/31/87.

College of Architecture

Bennett, Stephen, Assistant Professor (part-time), 8/15/87 through
6/30/88.

College of Arts and Sciences

Atkins, Vicki, Instructor (part-time), Mathematics, 8/16/87 through
12/31/87.
Cridler, Carol, Instructor (part-time), Mathematics, 8/16/87 through
12/31/87.
Finch, Patricia S., Instructor (part-time), Spanish and Italian,
8/16/87 through 12/31/87.
Ford, Leslie, Instructor (part-time), Mathematics, 8/16/87 through
12/31/87.
Frye, Anne K., Instructor (part-time), Spanish and Italian, 8/16/87
through 12/31/87.
Haynes, Jon, Instructor (part-time), Mathematics, 8/16/87 through
12/31/87.
Hobson, Elizabeth, Instructor (part-time), English, 8/16/87
through 12/31/87.
Holbrook, Paul E., Instructor (part-time), Philosophy, 8/16/87
through 12/31/87.
Jahed, Mehran, Instructor (part-time), Mathematics, 8/16/87
through 12/31/87.
Jenda, Overtoun, Visiting Assistant Professor, Mathematics, 8/16/87
through 5/31/88.
Kenyon, John, Instructor (part-time), English, 8/16/87 through
12/31/87.
Lanham, Stephen M., Instructor, Computer Science, 8/16/87 through
6/30/88.
Marmon, Ellen L., Instructor (part-time), English, 8/16/87 through
12/31/87.
McGuire, Susan, Instructor (part-time), English, 8/16/87 through
12/31/87.
Miller, J. Scott, Instructor (part-time), Mathematics, 8/16/87
through 12/31/87.
Nickell, Joe, Instructor (part-time), English, 8/16/87 through
12/31/87.
Nishikawa, Kiisa, Assistant Professor, Biological Sciences,
8/16/87 through 6/30/89.
Norman, Charlene, Instructor (part-time), Mathematics, 8/16/87
through 12/31/87.
Opfell, Laurie, Instructor (part-time), English, 8/16/87 through
12/31/87.

*Special Title Series

Pickar, Mark Anthony, Assistant Professor, Physics and Astronomy, 8/16/87 through 6/30/89.
Porter, Gary, Instructor (part-time), Physics and Astronomy, 8/16/87 through 12/31/87.
Robinson, Donita, Instructor (part-time), Mathematics, 8/16/87 through 12/31/87.
Sahagun, Claudia, Instructor (part-time), Spanish and Italian, 8/16/87 through 12/31/87.
Seabrook, Charles C., Instructor (part-time), Spanish and Italian, 8/16/87 through 12/31/87.
Tandy, Caron, Instructor (part-time), English, 8/16/87 through 12/31/87.
Turner, Terence, Instructor (part-time), Psychology, 8/16/87 through 12/31/87.
Wagner, William P., Instructor (part-time), Classics, 8/16/87 through 12/31/87.
Walsh, John, Assistant Professor, History, 8/16/87 through 6/30/88.
Williams, Demis A., Instructor (part-time), History, 8/16/87 through 12/31/87.
Wilson, David C., Visiting Professor, Mathematics, 8/16/87 through 5/31/88.

College of Business and Economics

Saidibaghgandomi, Gholamreza, Assistant Professor (part-time), Economics, 9/1/87 through 12/31/87.
Shupe, Mark, Instructor (part-time), Finance, 8/15/87 through 5/15/88.

College of Communications

Burcham, Jamie W., Instructor (part-time), Communication, 8/16/87 through 12/31/87.
Ireland, John W., Instructor (part-time), Journalism, 8/15/87 through 12/31/87.
Jemmings, James M., II, Instructor (part-time)*, Journalism, 8/15/87 through 12/31/87.
Kearney, Philip M., Instructor (part-time), Journalism, 8/15/87 through 12/31/87.
Knuf, Joachim, Visiting Assistant Professor, Communication, 8/16/87 through 6/30/88.
Marquette, J.C.B., Instructor (part-time), Communication, 8/16/87 through 12/31/87.
Martin, Tamara A., Instructor (part-time), Communication, 8/16/87 through 12/31/87.
Traylor, Deborah W., Instructor (part-time), Communication, 8/16/87 through 12/31/87.

*Special Title Series

College of Education

Niquette, Garland F., Instructor (part-time), Educational and Counseling Psychology, 8/16/87 through 5/15/88.

College of Fine Arts

Brock, Walter, Instructor (part-time), Art, 8/16/87 through 12/31/87.

Christ, Alice, Instructor (part-time), Art, 8/16/87 through 12/31/87.

Coldiron, Jill L., Instructor (part-time), Art, 8/16/87 through 12/31/87.

Covert, Pamela, Instructor (part-time), Music, 8/1/87 through 12/31/87.

Hammond, Frances L., Instructor (part-time), Art, 8/16/87 through 12/31/87.

May, Robert C., Instructor (part-time), Art, 8/16/87 through 12/31/87.

Mendes, Guy M., III, Instructor (part-time), Art, 8/16/87 through 5/31/88

Olsen, Andrea, Instructor (part-time), Art, 8/16/87 through 12/31/87.

Shepherd, Robert, Instructor (part-time), Art, 8/16/87 through 12/31/87.

Wujcik, Len, Instructor (part-time), Art, 8/16/87 through 12/31/87.

Graduate School

Leigland, James, Visiting Assistant Professor, James W. Martin School of Public Administration, 8/1/87 through 7/31/88.

College of Home Economics

Burchfield, Meredith H., Instructor (part-time), Family Studies, 8/1/87 through 12/31/87.

Morford, Michal, Instructor (part-time), Family Studies, 8/1/87 through 12/31/87.

College of Law

Elliott, Robert L., Associate Professor (part-time), 9/1/87 through 12/31/87.

Garmer, William R., Associate Professor (part-time), 9/1/87 through 12/31/87.

Hamblin, Pierce W., Assistant Professor (part-time), 9/1/87 through 12/31/87.

Lee, Joe, Professor (part-time), 9/1/87 through 12/31/87.

Pfeiffer, Robert M., Assistant Professor (part-time), 9/1/87 through 12/31/87.

*Special Title Series

Libraries

Cline, Cindy D., Librarian IV (temporary), Newspapers/Periodicals/
Microtext, 8/17/87 through 6/30/88.
Seago, Catherine, Librarian IV, Cataloging, 9/15/87 through
6/30/88.

College of Social Work

Mazzaro, Tony, Associate Professor (part-time), 8/16/87 through
5/15/88.

B. ADMINISTRATIVE APPOINTMENTS

College of Business and Economics

Fulks, Daniel L., Associate Professor (with tenure), Accountancy,
appointed Assistant Dean for Undergraduate Studies, effective
11/1/87.

College of Fine Arts

Henderson, Hubert P., Professor (with tenure)*, Music, appointed
Associate Director, Music, effective 8/16/87.

C. JOINT APPOINTMENTS

College of Arts and Sciences

Aaron, Debra K., Assistant Professor, Animal Sciences, College of
Agriculture, joint appointment as Assistant Professor,
Statistics, 7/1/87 through 6/30/88.

D. REAPPOINTMENTS

College of Architecture

De Hahn, Henri, Assistant Professor (temporary), 8/15/87 through
6/30/88.
Ricci, Leonardo, Professor (part-time), 8/15/87 through 12/31/87.

College of Arts and Sciences

Adams, Todd L., Instructor (part-time), Philosophy, 8/16/87 through
12/31/87.
Baltus-Sih, Marie-Sylvie, Instructor (part-time), French, 8/16/87
through 12/31/87.
Bitetto, Vito, Instructor (part-time), Computer Science, 8/16/87
through 12/31/87.

*Special Title Series

Blythe, Marsha, Instructor (part-time), French, 8/16/87 through 12/31/87.
Campbell, F. Diane, Instructor (part-time), English, 8/16/87 through 12/31/87.
Carter, Michael W., Instructor (part-time), English, 8/16/87 through 12/31/87.
Cobb, James C., Adjunct Assistant Professor, Geological Sciences, 7/1/87 through 6/30/89.
Conway, Glenda, Instructor (part-time), English, 8/16/87 through 12/31/87.
Cooper, John B., Instructor (part-time), English, 8/16/87 through 12/31/87.
Coz, Sigrid, Instructor (part-time), French, 8/16/87 through 12/31/87.
Crawley, Bryan S., Instructor (part-time), Computer Science, 8/16/87 through 12/31/87.
Crocker, Lina E., Instructor (part-time), English, 8/16/87 through 12/31/87.
DeSimone, Shirley, Instructor (part-time), English, 8/16/87 through 12/31/87.
Duncan, Charles E., Instructor (part-time), Physics and Astronomy, 8/16/87 through 12/31/87.
Fazey, Mark, Instructor (part-time), Mathematics, 8/16/87 through 12/31/87.
Foreman, Nancy K., Instructor (part-time), English, 8/16/87 through 12/31/87.
Francis, Melanie M., Instructor (part-time), English, 8/16/87 through 12/31/87.
Galloway, Lynn A., Instructor (part-time), English, 8/16/87 through 12/31/87.
Gregory, Howard, Instructor (part-time), French, 8/16/87 through 12/31/87.
Hamilton, Sarah, Instructor (part-time), English, 8/16/87 through 12/31/87.
Higginbotham, Jerome C., Instructor (part-time), Philosophy, 8/16/87 through 12/31/87.
Isenhour, Janet I., Instructor (part-time), English, 8/16/87 through 12/31/87.
Janecek, Susan M., Instructor (part-time), Russian and Eastern Studies, 8/16/87 through 12/31/87.
McHenry-Hepner, Virginia, Instructor (part-time), English, 8/16/87 through 12/31/87.
Meegan, William J., Adjunct Assistant Professor, Psychology, 7/1/87 through 6/30/89.
Miller, Marilyn S., Instructor (part-time), English, 8/16/87 through 12/31/87.
Moss, Marvin T., Instructor (part-time), Mathematics, 8/16/87 through 12/31/87.
Myneer, Daniel D., Instructor (part-time), English, 8/16/87 through 12/31/87.

*Special Title Series

Najmuddin, Jane, Instructor (part-time), English, 8/16/87 through 12/31/87.
Neill, Thomas K., Adjunct Assistant Professor, Psychology, 7/1/87 through 6/30/89.
Oaks, Janice H., Instructor (part-time), English, 8/16/87 through 12/31/87.
Ralph, Margaret, Instructor (part-time), English, 8/16/87 through 12/31/87.
Reynolds, Thomas E., Instructor (part-time), English, 8/16/87 through 12/31/87.
Royster, Betty B., Instructor (part-time), Mathematics, 8/16/87 through 12/31/87.
Seiler, Michael J., Instructor (part-time), Mathematics, 8/16/87 through 12/31/87.
Slusher, Kathleen C., Instructor (part-time), English, 8/16/87 through 12/31/87.
Sorokin, Larisa, Instructor (part-time), Russian and Eastern Studies, 8/16/87 through 12/31/87.
Stribling, Marda, Instructor (part-time), Mathematics, 8/16/87 through 12/31/87.
Vanderpool, Betty, Instructor (part-time), Mathematics, 8/16/87 through 12/31/87.
Walden, Stephen, Instructor (part-time), French, 8/16/87 through 12/31/87.
Webb, A. Dean, Instructor (part-time), English, 8/16/87 through 12/31/87.
Weber, Deborah, Instructor (part-time), Mathematics, 8/16/87 through 12/31/87.
White, Ronald F., Instructor (part-time), Philosophy, 8/16/87 through 12/31/87.
Willard, Norman, Instructor (part-time), Psychology, 8/16/87 through 12/31/87.
Williams, Jeff, Instructor (part-time), Mathematics, 8/16/87 through 12/31/87.
Witte, Florence M., Instructor (part-time), German, 8/16/87 through 12/31/87.
Zahniser, Ann, Instructor (part-time), English, 8/16/87 through 12/31/87.

College of Business and Economics

Myers, L. W., Instructor (part-time), Management, 9/1/87 through 4/30/88.

College of Communications

Jordan, James C., Instructor (part-time), Journalism, 8/15/87 through 12/31/87.

*Special Title Series

College of Education

Illback, Robert J., Adjunct Assistant Professor, Educational and Counseling Psychology, 7/1/87 through 6/30/89.
Pappas, Christine, Assistant Professor, Curriculum and Instruction, 7/1/87 through 12/31/87.

College of Engineering

Cheeks, Richard, Adjunct Assistant Professor, Civil Engineering, 7/1/87 through 6/30/88.
House, Barry C., Adjunct Assistant Professor, Civil Engineering, 7/1/87 through 6/30/88.

College of Fine Arts

Cook, Elaine, Instructor (part-time)*, Music, 8/1/87 through 5/31/88.
Fратиanni, Joe, Instructor (part-time)*, Music, 8/1/87 through 5/31/88.
Wagner, Jeffrey, Instructor (part-time), Art, 8/16/87 through 12/31/87.
Zwierlein, Thomas, Instructor (part-time), Art, 8/16/87 through 12/31/87.

Libraries

Czarski, Charles M., Librarian IV (temporary), Newspapers/Periodicals/Microtext, 9/1/87 through 6/30/88.

F. CHANGES

College of Arts and Sciences

Brown, David M., from Instructor (full-time), Computer Science, to Instructor (part-time), Computer Science, 8/16/87 through 12/31/87.
Moore, James, from Instructor (part-time), Biological Sciences, to Assistant Professor (temporary) (full-time), Biological Sciences, 1/1/88 through 5/31/88.

College of Education

Stevens, Kay B., from Lecturer (full-time), Special Education, to Lecturer (part-time), Special Education, 7/1/87 through 6/30/88.

*Special Title Series

Libraries

Trimble, Jeanne S., from Librarian IV (temporary), Special Collections, to Librarian IV (temporary), Newspapers/Periodicals/Microtext, 9/1/87 through 6/30/88.

F. TERMINAL REAPPOINTMENTS

College of Business and Economics

Courtenay, Stephen M., Assistant Professor, Accountancy, 1/1/88 through 12/31/88.

G. LEAVES OF ABSENCE

College of Agriculture

Fountain, William M, Associate Extension Professor (with tenure), Horticulture and Landscape Architecture, Sabbatical leave with full salary, 3/1/88 through 8/31/88.

College of Architecture

Eardley, Anthony, Professor (with tenure), Sabbatical leave with full salary, Spring semester 1988.

College of Arts and Sciences

Alvey, R. Gerald, Associate Professor (with tenure), English, Sabbatical leave with full salary, Spring semester 1988.
Gragg, William B., Professor (with tenure), Mathematics, To change beginning date of Leave without pay from 7/1/87 to 10/1/87.
Impey, Michael H., Associate Professor (with tenure), Spanish and Italian, To rescind sabbatical leave with full salary for Spring semester 1988.

College of Business and Economics

Shepard, Jon M., Professor (with tenure), Management, Sabbatical leave with full salary, Spring semester 1988.

College of Education

Atwood, Ronald K., Professor (with tenure), Curriculum and Instruction, Sabbatical leave with full salary, Spring semester 1988.

College of Engineering

Singh, S. N., Professor (with tenure), Mechanical Engineering, Sabbatical leave with full salary, Spring semester 1988.

*Special Title Series

College of Fine Arts

Frederick, Deborah, Associate Professor (with tenure), Art,
Sabbatical leave with full salary, Spring semester 1988.

Tuska, John R., Professor (with tenure), Art, Sick leave with pay
8/15/87 through 12/31/87.

College of Home Economics

Hoskin, Sharla Jean, Associate Professor (with tenure), Human
Environment:Design, Sabbatical leave with full salary, Spring
semester 1988.

College of Library and Information Science

Rogers, JoAnn V., Professor (with tenure), Sabbatical leave with
full salary, Spring semester 1988.

*Special Title Series

MEDICAL CENTER

I. BOARD ACTION

A. ACADEMIC APPOINTMENTS

College of Medicine

Bradley, Barrett Blake, Assistant Professor*,
Obstetrics and Gynecology, 7/1/87 through 6/30/88.
Griffith, J. Susan, Assistant Professor, Clinical Title
Series, Family Practice, 9/1/87 through 6/30/88.
Korvick, Joyce A., Assistant Professor, Medicine, 10/15/87
through 6/30/88.
Richardson, Joseph W., Assistant Professor*,
Emergency Medicine, 7/1/87 through 6/30/88.
Schmeisser, Elmar T., Associate Professor, Research
Title Series, Ophthalmology, 8/1/87 through 6/30/88.
Waid, Thomas H., Assistant Professor, Clinical Title
Series, Medicine, 8/1/87 through 6/30/88.
Wells, Sharon E., Assistant Professor, Clinical
Title Series, Emergency Medicine, 9/1/87 through
6/30/88.
Williams, Faren H., Assistant Professor,
Rehabilitation Medicine, 9/1/87 through 6/30/88.

B. JOINT APPOINTMENTS

College of Medicine

Baker, Robert S., Associate Professor (with tenure),
Ophthalmology, joint appointment as Associate
Professor (without tenure), Surgery, 8/1/87 through
6/30/88.

C. CORRECTION IN MINUTES

College of Dentistry

Lenox, John A., Assistant Clinical Professor
(voluntary), Community Dentistry, 7/1/87 through
6/30/88. Note: To correct change to include the
joint appointment, Department of Periodontics, as
reported in August 18, 1987 Minutes.

*Special Title Series

College of Pharmacy

Blouin, Robert A., Associate Professor (with tenure),
Sabbatical leave at full-salary to be taken either
8/1/87 through 1/31/88 or 9/1/87 through 2/28/88.
Note: To correct ending date of 2/28/88 to 2/29/88 as
reported in June 23, 1987 minutes.

D. LEAVES OF ABSENCE

College of Medicine

Smith, Stephen D., Associate Professor (with tenure),
Anatomy and Neurobiology, special leave of absence
from 1/1/88 through 6/30/88, with pay.

II. ADMINISTRATIVE ACTION

A. ACADEMIC APPOINTMENTS

College of Allied Health

Bursch, Susan Gail, Clinical Instructor
(voluntary), Physical Therapy, 6/1/87 through 6/30/89.
Edelen, Julie Ann Redinbo, Clinical Instructor
(voluntary), Physical Therapy, 3/1/87 through 6/30/89.
Salerno, Lynne M., Clinical Instructor (voluntary),
Physical Therapy, 4/1/87 through 6/30/89.
Stith, Dawn Owens, Clinical Instructor (voluntary),
Physical Therapy, 6/1/87 through 6/30/89.
Vargas, Elsa, Visiting Associate Professor, (voluntary),
Education and Research, 10/1/87 through 6/30/88.

College of Dentistry

Ahnquist, M. Suzanne, Clinical Instructor
(voluntary), Community Dentistry, 9/1/87 through
6/30/91.
Arvin, Howard G., Assistant Clinical Professor
(voluntary), Prosthodontics, 8/1/87 through 6/30/88.
Mahan, Willard L., Clinical Instructor (voluntary),
Community Dentistry, 9/1/87 through 6/30/88.
Sharp, Larry B., Assistant Professor (part-time),
Oral Diagnosis and Oral Medicine, 9/1/87 through
6/30/88.

College of Medicine

Bielecki, Marlene A., Assistant Clinical Professor
(voluntary), Family Practice, 8/1/87 through 6/30/88.
Medina, William D., Assistant Clinical Professor
(voluntary), Medicine, 9/1/87 through 6/30/88.
Porter, Janice M. Kregor, Assistant Clinical
Professor (part-time), Pediatrics, 8/15/87 through
6/30/88.
Ross, James K., Assistant Clinical Professor
(voluntary), Preventive Medicine and Environmental
Health, 10/1/87 through 6/30/88.
Shechet, Arthur L., Assistant Clinical Professor
(voluntary), Psychiatry, 9/1/87 through 6/30/88.
Suruda, Helle G., Clinical Instructor (voluntary),
Obstetrics and Gynecology, 7/1/87 through 6/30/88.

College of Nursing

Antenucci, Margaret B., Instructor (part-time),
(temporary), 8/24/87 through 6/30/88.
Davis, Ruth B., Instructor (part-time),
8/24/87 through 12/31/88.
Moseley, Therese, Instructor (part-time),
8/1/87 through 6/30/88.
Storat, Betty A., Assistant Professor*
(part-time), 8/1/87 through 6/30/88.

B. ADMINISTRATIVE APPOINTMENTS

College of Allied Health

Bowlyow, Joyce E., Assistant Professor, appointed Acting
Chairperson, Community Health, 7/1/87 through 12/31/87.

C. REAPPOINTMENTS

College of Dentistry

Crider, Bob M., Clinical Instructor
(voluntary), Community Dentistry, 7/1/87 through
6/30/88.
Douglas, Lindsey Russell, III, Clinical
Instructor (voluntary), Community Dentistry, 7/1/87
through 6/30/88.

*Special Title Series

College of Nursing

Kral, Paula Roberts, Instructor (part-time),
(temporary), 8/1/87 through 6/30/88.

College of Pharmacy

Abell, Robert U., Assistant Professor,
(part-time), 7/1/87 through 6/30/88.

D. CHANGES

College of Medicine

Qian, Sufan, Assistant Research Professor, Surgery,
7/1/87 through 6/30/88. Note: change last name from
Chien to Qian.

College of Nursing

Peden, Ann R., Instructor*, (temporary), (part-time), 7/1/87
through 6/30/88. Note: change from full-time to
temporary, part-time.

College of Pharmacy

Brown, James Baxter, from Assistant Professor (part-time)
to Assistant Professor (voluntary), 10/1/87 through
6/30/88.

E. LEAVES OF ABSENCE

College of Allied Health

Lee, Joel M., Associate Professor* (with tenure), Community
Health, sabbatical leave at half-salary, 1/1/88
through 12/31/88.

*Special Title Series

REVISED

Office of the President
October 20, 1987

PR 3B

Members, Board of Trustees:

INCREASE IN STUDENT ACTIVITIES FEES

Recommendation: that the Board of Trustees approve an increase in the Student Activities Fees from \$38.75 to \$39.75 effective fall semester, 1988, and that the additional dollar go to finance the yearly operational expenses of WRFL (Radio Free Lexington).

Background: Radio Free Lexington is a student organization which intends to establish a student-run, non-commercial radio station. The format for this station is anticipated to include progressive rock, jazz, metal, and country music, as well as campus news.

Radio Free Lexington has, through grants from the University and the City, and through their own fund-raising efforts, gleaned a revenue base of \$85,000. Unfortunately, this amount is not sufficient to establish and maintain a radio station on campus.

At the request of the Student Government Association, the University of Kentucky Survey Research Center conducted a survey of students of the student body to measure public opinion regarding an increase in student fees to finance the radio station. The results showed 77.8 % of the students surveyed favored an increase of \$1.00 each semester.

Action taken: Approved Disapproved Other

Date: October 20, 1987

PR 30

Members, Board of Trustees:

AMENDMENTS TO THE GOVERNING REGULATIONS

Recommendation: that the following amendments to the Governing Regulations of the University of Kentucky, which were received by the Board of Trustees for preliminary consideration on September 15, 1987, be approved:

(Note: Proposed additions are underlined; proposed deletions are bracketed.)

Amendment #1 - Change PART X.A, second paragraph, to read:

Members of the Board of Trustees, except those elected to the Board as faculty representatives or as a student representative, and relatives by blood or marriage of any member of the Board of Trustees are ineligible for appointment to any position in the University. No relative by blood or marriage of the President or [any vice president] the Vice President for Administration shall be employed in a position at the University. Similarly, no relative of a chancellor [or any vice chancellor] in a sector shall be employed in a position in that sector. Waiver of the above regulation may be permitted by the Board of Trustees on a stated temporary basis, not to exceed two years, when it is otherwise impossible practicably to fill a position with a fully qualified person. The same individual shall not be eligible for reappointment under the terms of this exception unless approval is given by the Board of Trustees. No relative by blood or marriage of any administrative officer of the University, or of any member of the University faculty, may be appointed to any position in the University over which the related officer or staff member exercises supervisory or line authority. Employment of persons related by blood or marriage within the same department or division shall be approved specifically by the chancellor in a sector or the Vice President for Administration in the Central Administration, as appropriate. "Relatives by blood or marriage," as used above, includes parents and children, husbands and wives, brothers and sisters, brothers- and sisters-in-law, mothers- and fathers-in-law, uncles, aunts, nieces and nephews, and step-relatives in the same relationships. The employment of relatives by blood or marriage whose relationship was not a violation of this section of the Governing Regulations prior to its amendment on April 10, 1984, does not constitute a violation of this amended policy provided the relatives are regular employees of the University and remain in University employment positions which they held on April 10, 1984. However, the transfer of any such employees (whose employment relationship was not a violation of policy prior to its amendment on April 10, 1984) to any other regular University position shall require approval of the President.

Rationale: The present policy on employment of persons related by blood or marriage to the vice presidents other than the Vice President for Administration and to the vice chancellors is considered to be too broadly restrictive. An adequate safeguard concerning the employment of relatives by blood or marriage to the vice presidents other than the Vice President for Administration and to the vice chancellors is provided by the sentence in the same paragraph which states: "No relative by blood or marriage of any administrative officer, or any member of the University faculty, may be appointed to any position in the University over which the related officer or staff member exercises supervisory or line authority."

Amendment #2 - Change PART X.B.1, seventh paragraph, to read:

A second type of post-retirement appointment may be used in a very limited number of cases, when it is essential to a University program or office or when it is otherwise impossible practicably to fill a position with a fully qualified person. Such a part-time or full-time appointment is restricted to former employees who have elected to retire [but have not reached the mandatory retirement age], requires specific prior approval by the Board of Trustees, and is made for a period not to exceed one year.

Rationale: This amendment is needed to bring this paragraph of the Governing Regulations into conformity with the requirements of the Age Discrimination in Employment Act Amendments of 1986 which became effective January 1, 1987.

Amendment #3 - Change PART X.C.8 to read:

8. Retirement

The University of Kentucky Retirement Plan [(September 18, 1979)] represents a consolidation of the original Retirement Resolution (April 7, 1964) and its numerous subsequent amendments into a unified statement of University policy and guidelines on retirement of employees in Groups I, II, III, [and] IV, and V. The University of Kentucky Retirement Plan, which has been adopted by the Board of Trustees and may be amended only by that body, is presented in its entirety in the Administrative Regulations (AR II-1.6-1).

Rationale: The date of September 18, 1979, should be deleted because several amendments to the University of Kentucky Retirement Plan have been approved by the Board of Trustees since that date; also, the deletion of this date will eliminate unnecessary, out-of-date, and misleading information. The addition of Group V in the Retirement Plan was approved by the Board of Trustees on June 23, 1987.

1989A

Action taken: Approved Disapproved Other

Date: October 20, 1987

Office of the President
October 20, 1987

PR 3D

Members, Board of Trustees:

POLICY STATEMENT REGARDING BUSINESS COMPETITION

Recommendation: that the Board of Trustees adopt the following policy statement applicable to business competition with the private sector.

The primary mission of the University of Kentucky is the creation and dissemination of knowledge. In carrying out this important mission, it is often necessary for the University and its affiliated corporations to provide certain goods and services for a fee. These goods and services promote, enhance, and support the instructional, research, and public service programs of the institution, and are essential to the University as it goes about its task of meeting the needs of students, faculty, staff, and members of the general public who participate in University programs.

It shall be the policy of the University of Kentucky that business activities consisting of the sale of goods and services be established and carried out pursuant to and only in accordance with the authorized and stated purpose of the University. Each business activity consisting of the sale of goods and services shall meet the following conditions:

- (1) The activity shall be deemed important in fulfilling the University's instructional, research, or public service mission without regard to profit.
- (2) The activity shall be provided at a fair price, on reasonable terms, and at a convenient location and time.
- (3) The activity shall be carried out for the primary benefit of the University community, but with sensitivity to the business community.

Members, Board of Trustees
Page Two
Policy Statement Regarding Business Competition

- (4) If any business activity should result in revenues found by the Internal Revenue Service to be unrelated business income, the University will comply with all applicable laws and regulations pertaining to such income.

Background: Recent attention has been given to college and university competition with private business. In order to clarify the position of the University of Kentucky with respect to private business competition, the above policy statement has been developed and patterned after a model statement on this topic prepared by the National Association of College and University Business Officers.

Action taken: Approved Disapproved Other

Date: October 20, 1987

Office of the President
October 20, 1987

PR 4A

Members, Board of Trustees:

CHANGE IN ADMINISTRATIVE TITLES
UNIVERSITY OF KENTUCKY COMMUNITY COLLEGE SYSTEM

Recommendation: that the title of the chief academic and administrative officer of each University of Kentucky Community College be changed from Director to President (e.g., President, Ashland Community College, University of Kentucky) and that titles Associate and Assistant Director be changed to Dean (e.g., Dean of Academic Affairs, Dean of Student Affairs, and Dean of Business Affairs), effective immediately.

Background: When the Community College System was established in 1964, after being authorized by the General Assembly in 1962, the Board of Trustees converted five existing University Extension Centers to Community Colleges. The chief administrative officer of each of the respective Extension Centers was the Director, and this title was retained under the new structure. As other colleges were added to the System, this title was replicated at each institution. When second level administrators were added through the years, the titles of Associate Director for Academic Affairs, Assistant Director for Student Services, and Assistant Director for Business Affairs were adopted. While not unique titles, these designations are not common, and are less than descriptive when used in a community college setting. The chief academic and administrative officer of a community college is normally known as a president, while the second level administration is most frequently composed of positions with titles of dean.

The colleges in the Community College System are institutions which are separately accredited by the Southern Association of Colleges and Schools. The title of Director may have been appropriate for an extension or branch of the University, but the colleges have matured, achieved separate accreditation status, and have been operating as individually accredited community colleges since 1971.

Through the years, in various studies and reports associated with accreditation and reaffirmation of accreditation visits, a change in titles for the Directors and Associate and Assistant Directors has been recommended many times. The College Advisory Boards are supportive of this change. These new titles already are universally recognized and accepted by the over 1200 community and junior colleges across the nation.

Action taken: Approved Disapproved Other

Date: October 20, 1987

Office of the President
October 20, 1987

PR 5A

Members, Board of Trustees:

APPOINTMENTS TO UNIVERSITY OF KENTUCKY/BUSINESS
PARTNERSHIP FOUNDATION

Recommendation: that approval be given to the appointment of C. Merwin Grayson, Jr.; Robert E. Lee, Jr.; and Zack C. Saufley to membership on the Board of Directors of the University of Kentucky/Business Partnership Foundation for terms beginning with the fall 1987 meeting and ending with the spring 1991 meeting.

Background: Mr. Grayson, Mr. Lee, and Mr. Saufley were unanimously elected to the Board of Directors of the University of Kentucky/Business Partnership Foundation. These appointments require approval by the Board of Trustees in accordance with the Articles of Incorporation for the University of Kentucky/Business Partnership Foundation approved by the Board of Trustees at its meeting on August 25, 1981.

Action taken: Approved Disapproved Other

Date October 20, 1987.

REVISED

Office of the President
October 20, 1987

PR 5B

Members, Board of Trustees:

ERNST & WHINNEY PROFESSORSHIP OF ACCOUNTING

Recommendation: that the Board of Trustees establish in the School of Accountancy, College of Business and Economics, the Ernst & Whimney Professorship of Accounting.

Background: The College of Business and Economics is raising funds to establish a minimum of 10 professorships to provide salary supplements to faculty members as well as discretionary funds for faculty development. Ernst & Whimney, one of the "big-eight" Certified Public Accounting firms, has been a strong supporter of the School of Accountancy in the College of Business and Economics for many years. Currently Ernst & Whimney has pledged \$100,000 to be contributed over the next five years from the following sources: individual contributions for current and future personnel and matching gifts from the company, contributions from the Ernst & Whimney Foundation, contributions from Ernst & Whimney, and other designated contributions. It is the intent of the Director of the School of Accountancy to use these funds to establish an endowment to support the professorship. The firm has requested that the professorship be named the Ernst & Whimney Professorship of Accounting.

Action taken: Approved Disapproved Other

Date: October 20, 1987

Office of the President
October 20, 1987

PR 5C

Members, Board of Trustees:

PATENT ASSIGNMENT
LEXINGTON CAMPUS

Recommendation: that authorization be given to the proper officials of the University of Kentucky Board of Trustees to execute an assignment on behalf of the Board of Trustees to the University of Kentucky Research Foundation of the following Letters Patent of the United States and the invention represented thereby: Joseph Kuc and Steven D. Salt, Serial No. (to be assigned), filed August 24, 1987.

Background: Joseph Kuc and Steven D. Salt have invented certain improvements in BETA-IONONE DERIVATIVES AS ANTIFUNGAL AGENT. They have assigned their rights to the invention to the University of Kentucky. In accord with usual practice, it is recommended that the University assign the patent to the University of Kentucky Research Foundation.

Action: Approved Disapproved Other

Date: October 20, 1987.

Office of the President
October 20, 1987

PR 5D

Members, Board of Trustees:

CENTER FOR ROBOTICS AND MANUFACTURING SYSTEMS
ADVISORY BOARD

Recommendation: that the Board of Trustees establish an Advisory Board to advise the President of the University of Kentucky on matters relating to the Center for Robotics and Manufacturing Systems. The Advisory Board shall consist of fourteen members representing higher education, business and industry, and state government. The Board shall be selected as follows:

- Three members to be appointed by the Governor (initial appointments: 1 one-year term, 1 three-year term, 1 four-year term)
- Three members to be appointed by the President of the University of Kentucky (initial appointments: 1 one-year term, 1 three-year term, 1 four-year term)
- One member from the Kentucky public regional universities to be appointed by the Chairman of the Council on Higher Education (initial appointment: two-year term)
- One member from the Kentucky independent colleges to be appointed by the Chairman of the Council on Higher Education (initial appointment: two-year term)

The following individuals shall serve ex officio:

- Chancellor, Lexington Campus, University of Kentucky
- Vice Chancellor for Research and Dean, Graduate School, University of Kentucky
- Dean, College of Engineering, University of Kentucky
- Dean, College of Business and Economics, University of Kentucky
- Dean, Speed Scientific School, University of Louisville
- Dean, School of Business, University of Louisville

The term of appointments shall be four years, except that the initial appointments shall be staggered.

The Chancellor, Lexington Campus, University of Kentucky, shall serve as chairman. The Director of the Center for Robotics and Manufacturing Systems shall serve as secretary. All members shall have voting privileges. The Advisory Board shall meet quarterly but may meet more often as needed.

Background: The Governor recommended and the General Assembly authorized a robotics and manufacturing systems program and facility at the University of Kentucky. This program is intended to serve the needs of the University, state government, other institutions of higher education in Kentucky and private industry. The Governor in her Executive Budget document states that "This new Center will make Kentucky a leader in the field of robotics and manufacturing engineering, and is intended to highlight this administration's efforts toward both excellence and economic development. This Center is being developed and funded from the beginning as a center of excellence." ... "The new Center will offer assistance to manufacturers considering locating in Kentucky and produce a pool of trained professionals to work in these new industries." ... "The new Center, a part of the University of Kentucky College of Engineering, will coordinate its programs with those of the other institutions of higher learning in the state."

This Advisory Board provides the mechanism for the doctoral institutions, regional universities, independent colleges, state government, and business and industry to have representation, and it best assures that all needs are considered and coordinated. The composition of the Board has been coordinated with the Secretary of the Governor's Cabinet, President of the University of Louisville and Chairman of the Council on Higher Education.

Action taken: Approved Disapproved Other

Date: October 20, 1987

PR 6A

Members, Board of Trustees:

REORGANIZATION OF DEPARTMENTS IN COLLEGE OF DENTISTRY

Recommendation: that the Board of Trustees approve the reorganization of the eleven existing departments in the College of Dentistry into two new departments, the Department of Oral Health Practice and the Department of Oral Health Science, effective immediately.

Background: The College of Dentistry has proposed this substantial reorganization of its academic, clinical, and administrative structure in order to better fulfill its various missions. The reorganization will result in a reconfiguration of the current eleven Departments of Orthodontics, Pediatric Dentistry, Oral and Maxillofacial Surgery, Prosthodontics, Restorative Dentistry, Endodontics, Periodontics, Oral Biology, Oral Diagnosis and Oral Medicine, Oral Pathology, and Community Dentistry into two larger departments. Consolidation into two larger departments, while retaining sections of specialists, will permit the College's departmental structure to more appropriately approximate that of a typical university department. The proposed two new departments are the Department of Oral Health Practice and the Department of Oral Health Science. The Department of Oral Health Practice will be composed of seven sections (or divisions) which are the current departments of Orthodontics, Pediatric Dentistry, Oral and Maxillofacial Surgery, Prosthodontics, Restorative Dentistry, Endodontics, and Periodontics and will have thirty-three faculty. The Department of Oral Health Science will consist of four sections (or divisions) which are the current departments of Oral Biology, Oral Diagnosis and Oral Medicine, Oral Pathology, and Community Dentistry and will have twenty-six faculty. An organization chart appears on the other side of this sheet.

There is broad and substantial support for this reorganization among the faculty members in the College of Dentistry. The reorganization of the departments in the College of Dentistry has been recommended by the Dean of the College of Dentistry, the Chancellor for the Medical Center, the University Senate Committee on Academic Organization and Structure, the University Senate Council, and the University Senate.

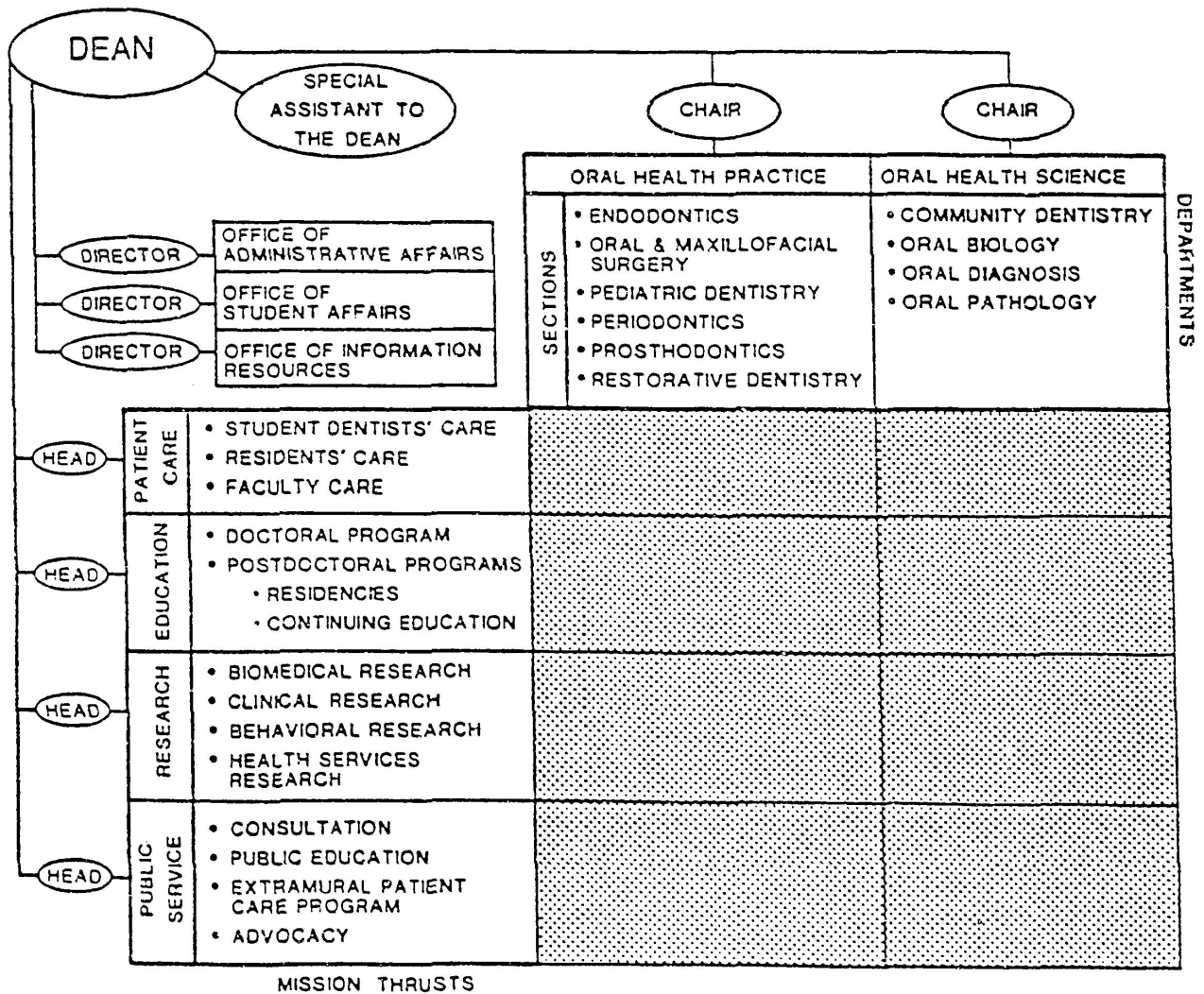
2046A

Action taken: Approved Disapproved Other

Date: October 20, 1987

PROPOSED ORGANIZATIONAL STRUCTURE

COLLEGE OF DENTISTRY UNIVERSITY OF KENTUCKY



Office of the President
October 20, 1987

FCR 1

Members, Board of Trustees:

ACCEPTANCE OF INTERIM FINANCIAL REPORT FOR THE
UNIVERSITY OF KENTUCKY FOR THE TWO MONTHS ENDED
AUGUST 31, 1987

Recommendation: that the Board of Trustees accept the University of Kentucky consolidated financial report for the two months ended August 31, 1987.

Background: The consolidated financial report includes the financial activities of the University of Kentucky and its affiliated corporations, consisting of the University of Kentucky Research Foundation, The Fund for Advancement of Education and Research in the University of Kentucky Medical Center, University of Kentucky Athletic Association, University of Kentucky Mining Engineering Foundation, Inc., University of Kentucky Business Partnership Foundation, Inc., University of Kentucky Humanities Research Foundation, Inc., University of Kentucky Equine Research Foundation, Inc., and Health Care Collection Service, Inc.

As of August 31, 1987, the University had realized income of \$145,468,000, representing 27% of the 1987-88 estimate of \$544,106,000. Expenditures and commitments total \$77,109,000 or 14% of the approved budget of \$544,106,000.

Action taken: Approved Disapproved Other

Date: October 20, 1987

CONSOLIDATED BALANCE SHEET
UNIVERSITY OF KENTUCKY AND AFFILIATED CORPORATIONS
AUGUST 31, 1987
(in thousands)

Statement 1

	Current Unrestricted Funds	Current Restricted Funds	Loan Funds	Endowment Funds	Plant Funds	Totals August 1987
ASSETS						
Cash and cash equivalents	\$ 80,665	\$ 6,543	\$ 1,988	\$ 639	\$134,308	\$ 224,143
Notes, loans, and A/R (less bad debt allowances of \$3,607)	37,390	9,978	14,268		743	62,379
Investments	10,743	39,879		47,055	66,895	164,572
Property, plant, and equipment					610,667	610,667
Inventories and other	11,522	105				11,627
Total Assets	\$140,320	\$56,505	\$16,256	\$47,694	\$812,613	\$1,073,388
LIABILITIES AND FUND BALANCES						
Liabilities						
Accounts payable	\$ 14,511	\$ 278	109			\$ 14,898
Employee withholdings and deposits		9,586				9,586
Other liabilities	664	188			\$ 4,381	5,233
Liability for self insurance	7,220					7,220
Deferred income	9,184					9,184
Bonds payable					259,410	259,410
Capitalized lease obligation					34,267	34,267
Net deferred revenues and appropriated fund balances (Schedule 4)	74,195	1,058				75,253
Total Liabilities	105,774	11,110	109	0	298,058	415,051
Interfund Balances	(16,571)	23,162			(6,591)	0
Fund Balances						
Current						
Unrestricted						
Working capital	32,510					32,510
Funded Hospital Depreciation	13,000					13,000
Other	5,607					5,607
Restricted						
		22,233				22,233
Loan						
			\$16,147			16,147
Endowment						
True				25,118		25,118
Term				529		529
Quasi				22,048		22,048
Plant						
Retirement of Indebtedness					21,652	21,652
Renewal and Replacement					3,658	3,658
Allocated for designated projects					52,310	52,810
Net investment in plant					443,026	443,026
Total Fund Balances	51,117	22,233	16,147	47,694	521,146	658,337
Total Liabilities and Fund Balances	\$140,320	\$56,505	\$16,256	\$47,694	\$812,613	\$1,073,388

CONSOLIDATED STATEMENT OF CURRENT FUNDS
 REVENUES AND APPROPRIATED FUND BALANCES
 UNIVERSITY OF KENTUCKY AND AFFILIATED CORPORATIONS
 FOR THE TWO MONTHS ENDED AUGUST 31, 1987
 with comparative totals for August 31, 1986
 (in thousands)

	1987-1988				1986-1987	
	ORIGINAL BUDGET	REVISED BUDGET	REALIZED TO DATE	PERCENT REALIZED	REALIZED TO DATE	PERCENT REALIZED
UNIVERSITY OF KENTUCKY UNRESTRICTED CURRENT REVENUES AND APPROPRIATED FUND BALANCES						
STATE APPROPRIATION	\$ 233,516	\$ 225,834	\$ 57,529	25	\$ 50,470	25
STUDENT FEES	50,998	50,998	18,325	37	17,493	38
FEDERAL APPROPRIATIONS	13,621	13,621	2,102	15	2,235	18
COUNTY APPROPRIATIONS	3,554	3,554	488	14	362	11
ENDOWMENT INCOME	696	696				
INVESTMENT INCOME	7,358	7,358	1,197	16	1,498	16
GIFTS AND GRANTS						
Affiliated corporations	3,117	3,117	168	2	48	1
Other	2,905	2,905	54	2	158	4
SALES AND SERVICES	12,100	12,100	1,696	14	1,511	14
HOSPITAL						
Revenues	83,418	83,418	14,886	18	14,412	20
Fund Balances	22,747	22,747	22,747	100	6,820	100
FUND BALANCES	7,021	7,021	7,021	100	3,281	100
TOTAL GENERAL FUND AND HOSPITAL	446,051	438,369	126,713	29	103,288	27
AUXILIARY ENTERPRISES	26,443	26,443	4,219	16	4,071	16
RESTRICTED	33,621	33,621	6,387	19	5,392	15
AFFILIATED ORGANIZATIONS	45,673	45,673	8,149	18	5,659	14
TOTAL REVENUES AND APPROPRIATED FUND BALANCES	\$ 551,788	\$ 544,106	\$ 145,468	27	\$ 118,410	24

CONSOLIDATED STATEMENT OF CURRENT FUND
 EXPENDITURES AND TRANSFERS SUMMARY BY PROGRAM - ALL FUNDS
 UNIVERSITY OF KENTUCKY AND AFFILIATED CORPORATIONS
 FOR THE TWO MONTHS ENDED AUGUST 31, 1987
 (in thousands)

Schedule 2

	1987-1988			
	ORIGINAL BUDGET	REVISED BUDGET	EXPENDITURES/ ENCUMBRANCES TO DATE	PERCENT EXPENDED/ ENCUMBERE
INSTRUCTION	\$ 148,563	\$ 146,086	\$ 22,102	15
RESEARCH	63,845	62,741	10,016	16
PUBLIC SERVICE	50,620	47,396	6,728	14
ACADEMIC SUPPORT	34,950	35,664	5,897	19
STUDENT SERVICES	13,266	13,257	2,389	18
INSTITUTIONAL SUPPORT	21,351	22,374	5,333	24
STUDENT FINANCIAL AID	19,789	20,299	4,244	21
OPERATION AND MAINTENANCE	32,721	32,347	4,058	13
MANDATORY TRANSFERS (DEBT SERVICE)	22,542	19,801		
HOSPITAL	107,280	107,280	9,832	9
AUXILIARY ENTERPRISES	36,861	36,861	5,510	15
	<u>\$ 551,788</u>	<u>\$ 544,106</u>	<u>\$ 77,109</u>	<u>14</u>

EXPENDITURES AND TRANSFERS SUMMARY
 BY CATEGORY OF EXPENDITURES
 UNIVERSITY OF KENTUCKY AND AFFILIATED CORPORATIONS
 FOR THE TWO MONTHS ENDED AUGUST 31, 1987
 (in thousands)

	ORIGINAL BUDGET	REVISED BUDGET	EXPENDED/ ENCUMBERED	% EXPENDE ENCUMBERE
PERSONNEL COSTS	\$ 311,799	\$ 308,150	\$ 45,897	15
OPERATING EXPENSES	187,404	186,112	24,208	13
MANDATORY TRANSFERS (DEBT SERVICE)	22,542	19,801		
CAPITAL OUTLAY	30,043	30,043	7,004	23
	<u>\$ 551,788</u>	<u>\$ 544,106</u>	<u>\$ 77,109</u>	<u>14</u>

CONSOLIDATED STATEMENT OF CURRENT FUNDS
 EXPENDITURES AND TRANSFERS
 UNIVERSITY OF KENTUCKY AND AFFILLATED CORPORATIONS
 FOR THE TWO MONTHS ENDED AUGUST 31, 1987
 with comparative totals for August 31, 1986
 (in thousands)

EXPENDITURES AND TRANSFERS	1987-1988				1986-1987	
	ORIGINAL BUDGET	REVISED BUDGET	EXPENDED ENCUMBERED TO DATE	PERCENT EXPENDED/ ENCUMBERED	EXPENDED ENCUMBERED TO DATE	PERCENT EXPENDED/ ENCUMBERED
UNRESTRICTED CURRENT FUNDS						
INSTRUCTION	\$ 139,914	\$ 137,437	\$ 21,143	15	19,784	15
RESEARCH	31,719	30,615	4,705	15	4,111	15
PUBLIC SERVICE	42,827	39,603	5,712	14	6,663	17
ACADEMIC SUPPORT	31,715	32,429	6,121	19	5,847	19
STUDENT SERVICES	13,133	13,124	2,377	18	2,114	19
INSTITUTIONAL SUPPORT	19,577	20,600	4,999	24	5,229	30
STUDENT FINANCIAL AID	4,805	5,315	749	14	960	19
OPERATION AND MAINTENANCE	32,601	32,227	4,007	12	3,275	11
MANDATORY TRANSFERS DEBT SERVICE	22,542	19,801				
HOSPITAL	107,218	107,218	9,831	9	10,348	13
TOTAL CURRENT UNRESTRICTED FUNDS	446,051	438,369	59,644	14	58,231	15
RESTRICTED CURRENT FUNDS						
INSTRUCTION	1,988	1,988	501	25	506	22
RESEARCH	13,760	13,760	1,786	13	2,243	16
PUBLIC SERVICE	837	837	286	34	274	23
ACADEMIC SUPPORT	991	991	175	18	118	9
STUDENT SERVICES	118	118	6	5	9	7
INSTITUTIONAL SUPPORT	910	910	249	27	101	17
STUDENT FINANCIAL AID	14,835	14,835	2,688	18	3,631	24
OPERATIONS AND MAINTENANCE	120	120	51	43	6	6
HOSPITAL	62	62				
TOTAL RESTRICTED CURRENT FUND	33,621	33,621	5,742	17	6,888	20
AUXILIARY ENTERPRISES	26,443	26,443	4,294	16	3,814	9
AFFILLATED ORGANIZATIONS	45,673	45,673	7,429	16	4,977	12
TOTAL EXPENDITURES	\$ 551,788	\$ 544,106	\$ 77,109	14	\$ 73,910	16

CONSOLIDATED SUMMARY OF NET DEFERRED REVENUES
AND APPROPRIATED FUND BALANCES
UNIVERSITY OF KENTUCKY AND AFFILIATED CORPORATIONS
FOR THE TWO MONTHS ENDED AUGUST 31, 1987
(in thousands)

Schedule 4

REVENUES, REALIZED		\$ 115,700
APPROPRIATED FUND BALANCES		
Current unrestricted fund	\$ 7,021	
University Hospital	22,747	

TOTAL APPROPRIATED FUND BALANCES		29,768

TOTAL REVENUES AND APPROPRIATED FUND BALANCES (SCHEDULE 1)		145,468

EXPENDITURES/ENCUMBRANCES (SCHEDULE 2)	77,109	
LESS: RESERVE FOR ENCUMBRANCES	(6,394)	

TOTAL EXPENDITURES		70,215

NET DEFERRED REVENUES AND APPROPRIATED FUND BALANCES (STATEMENT 1)		<u>\$ 75,253</u>

Office of the President
October 20, 1987

FCR 2

Members, Board of Trustees:

ACCEPTANCE OF THE FINANCIAL STATEMENTS OF
THE UNIVERSITY OF KENTUCKY AND AFFILIATED
CORPORATIONS AND OTHER RELATED ORGANIZATIONS
FOR THE YEAR ENDED JUNE 30, 1987

Recommendation: That the Board of Trustees accept the audited financial statements of the University of Kentucky including the Management Letter and a Report on Compliance with House Bill 622, and separate financial statements for the Housing and Dining System, the Tobacco and Health Research Institute, and the University Hospital, for the year ended June 30, 1987;

that the Board of Trustees accept the audited financial statements of the affiliated corporations and other related organizations of the University of Kentucky including The Fund for Advancement of Education and Research in the University of Kentucky Medical Center, University of Kentucky Research Foundation, University of Kentucky Athletic Association, University of Kentucky Business Partnership Foundation, Inc., University of Kentucky Mining Engineering Foundation, Inc., University of Kentucky Equine Research Foundation, Inc., University of Kentucky Humanities Foundation, Inc., Health Care Collection Service, Inc., University of Kentucky Alumni Association, and University of Kentucky Hospital Auxiliary for the year ended June 30, 1987.

Background: The Finance Committee of the Board of Trustees has reviewed the audited financial statements and related reports in conjunction with the administration of the University of Kentucky. These financial statements have been audited by Coopers & Lybrand, Certified Public Accountants, and are presented to the Board for acceptance.

Action: Approved Disapproved Other

Date: October 20, 1987

Office of the President
October 20, 1987

FCR 3

Members, Board of Trustees:

Disposal of Personal Property

Recommendation: that the Board of Trustees approve the disposition of surplus vehicles by public auction on November 7, 1987.

Background: KRS 164A.575 requires that the governing board sell or otherwise dispose of all personal property which is not needed by the institution. The Board will be provided with a description of the property, the reason why the disposal should be effected, and the method of disposition (auction, sealed bid, etc.).

Action taken: Approved Disapproved Other

Date: October 20, 1987

University of Kentucky

Sale of Surplus Vehicles

TYPE OF DISPOSAL: Public Auction.

REASON: Vehicles are obsolete, damaged, aged and no longer needed by the institution.

SALE DATE: November 7, 1987.

<u>FLEET #</u>	<u>SERIAL #</u>	<u>MAKE</u>	<u>YEAR</u>	<u>MILEAGE</u>
1-157	F10AL832535	FORD	1966	47,886
1-195	1281830337	DODGE	1968	59,084
1-196	1281835240	DODGE	1968	46,597
1-243	D51FG1J307274	DODGE	1971	43,015
1-250	D21BB1S375072	DODGE	1971	61,854
1-259	D24BB2U569091	DODGE	1972	101,276
1-264	P40AVP14626	FORD	1972	37,886
1-265	B13201H292702	INTERNATIONAL	1972	31,144
1-276	F70EVR31648	FORD	1973	27,623
1-284	3H3A0CHB71055	INTERNATIONAL	1973	28,191
2-210	4S642N100756	CHEVROLET	1964	103,379
2-307	F10DK714380	FORD	1965	113,433
2-344	F10YL 832518	FORD	1966	58,958
2-346	C1466F 140610	CHEVROLET	1966	91,767
2-416	1187057008	DODGE	1968	46,340
2-494	F60CH 174414	FORD	1961	85,738
2-514	CE140B133529	CHEVROLET	1970	97,602
2-783	D14A E4S 130931	DODGE	1974	122,984
2-895	A8A887N387181	MATADOR	1978	100,362
2-902	CGL2590133735	CHEVROLET	1978	105,149
2-910	F15SUCA2304	FORD	1978	80,229
2-995	1T19KAR447942	CHEVROLET	1980	98,879
5-012	1B689AA261142	CHEVROLET	1980	41,485
5-036	1B3BK46B5BC210258	DODGE	1981	115,200
5-037	1B3GK46B7BC210259	DODGE	1981	86,813
5-039	1B3BK46B0BC210264	DODGE	1981	106,226
5-041	1B3BK46B4BC210266	DODGE	1981	83,156
5-042	1B3BK46B6BC210267	DODGE	1981	102,076
5-043	1B3BK46B6BC210270	DODGE	1981	104,227
5-045	1B3BK46BXBC210272	DODGE	1981	83,195
5-046	1B3BK46B5BC210275	DODGE	1981	92,682
5-048	1B3BK46B5BC210261	DODGE	1981	101,835
5-050	1B3BK46B8BC210268	DODGE	1981	110,851
5-051	1B3BK46BXBC210269	DODGE	1981	112,512
5-052	1B3BK46B1BC210273	DODGE	1981	105,072
5-094	1B3BD26B5CC168612	DODGE	1982	101,729
5-095	1B3BD26B8CC168636	DODGE	1982	101,689
5-097	1B3BD26B4CC168620	DODGE	1982	101,861
5-098	1B3BD26B2CC168616	DODGE	1982	112,915
5-099	1B3BD26B9CC168622	DODGE	1982	102,069
5-100	1B3BD26B1CC168641	DODGE	1982	103,431
5-101	1B3BD26B6CC168635	DODGE	1982	100,769
5-105	1B3BD26B2CC168633	DODGE	1982	98,999
5-110	1B3BD26B7CC168613	DODGE	1982	102,092

<u>FLEET #</u>	<u>SERIAL #</u>	<u>MAKE</u>	<u>YEAR</u>	<u>MILEAGE</u>
5-116	1B3BD26B3CC168625	DODGE	1982	100,488
5-137	1111B1C28BS000718	COMUTA CAR	1981	1,095
9-113	F25JL557005	FORD	1964	71,590
17-110	2322162109	VOLKSWAGON	1972	86,989
22-146	A9A057F230933	AMC	1979	55,730
22-148	NL41L9B267642	DODGE	1979	93,610
22-150	NL41L9B267637	DODGE	1979	93,610
25-115	CS149S857670	CHEVROLET	1969	102,955
26-120	CGD156U146632	CHEVROLET	1976	31,216

FCR 4

Members, Board of Trustees:

ESTABLISHMENT OF QUASI-ENDOWMENT FOR THE
UNIVERSITY OF KENTUCKY THEATRE
ENRICHMENT FUND

Recommendation: that the Board of Trustees authorize the creation of a quasi-endowment fund to be entitled the "Department of Theatre Enrichment Fund."

Background: By this action the Board of Trustees will establish the fund and permit the allocation of funds necessary to implement this authorization. Funds for this endowment will come from gifts designated for the Department of Theatre Development Fund. The University of Kentucky Theatre Enrichment Fund will consist initially of \$10,000, which may be added to later by the Donors or others, and which shall be invested by the University and the income therefrom shall be used for reasonable expenditures to benefit the Department of Theatre.

Action taken: Approved Disapproved Other

Date: October 20, 1987