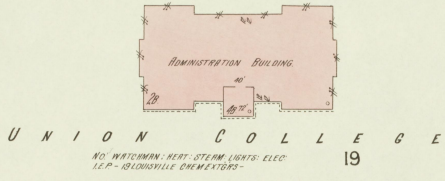
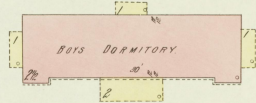


NOV 20 1913
P.M. 55950



UNION COLLEGE
NO WATCHMAN - HEAT - STEAM LIGHTS: ELEC.
I.E.P. - ISLINGTONVILLE CEMENTWORKS -

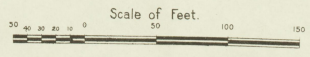
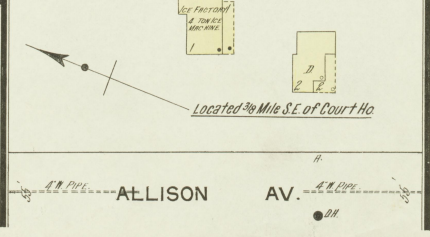
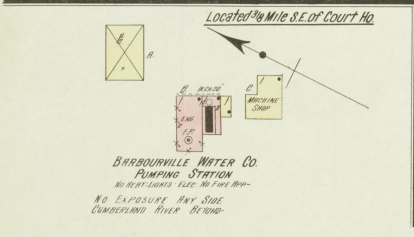
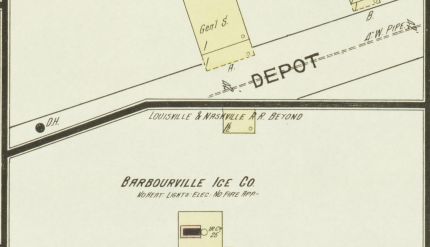
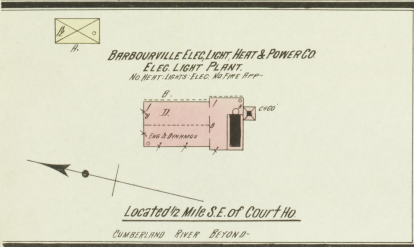
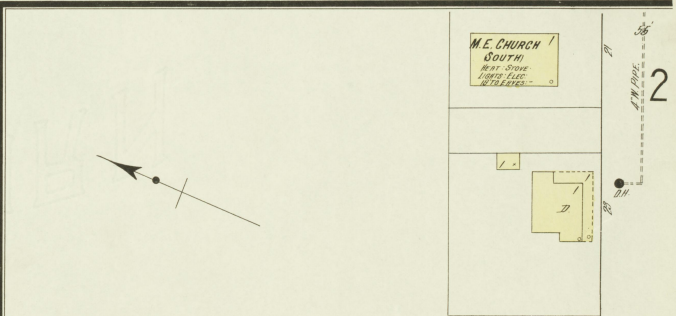
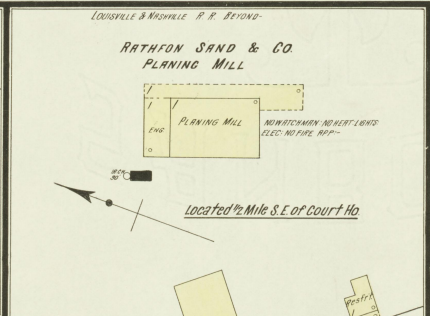
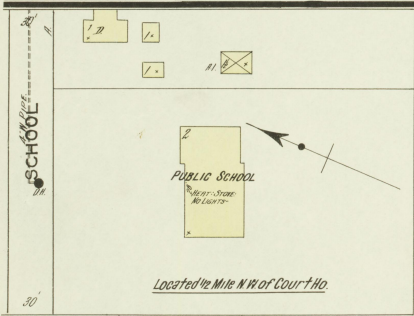
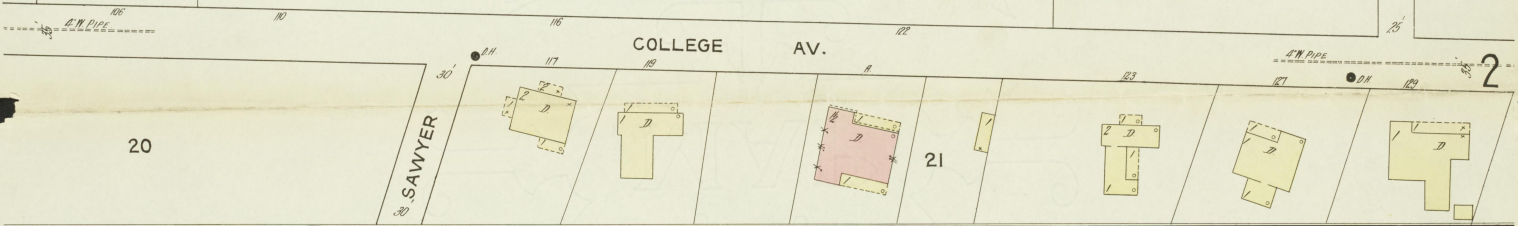


WATER FACILITIES
Gravity & Direct Pressure System of Water Works.
Water Siphoned from Cumberland River - About 2 1/2
Miles & into Reservoir, Located on Hill 1/2 Mile S. of
Campus. Elevating Sigs. Capacity 300,000 Gals. Air
Boiler Traction Pump, Capacity 300 Gals Per Minute.
Pressure 400 Lbs. - About 2 1/2 Miles, & 1/2 x 4 Mains,
30 Branches, Hydrants, Siphons, Incubator Boilers.

FIRE DEPT
No. of Fire: 12 Men, 1 Horse, 1 Hose Cart & 1 1/2 2 1/2"
Hoses - About 2 1/2 Miles, 100 x 2 1/2"
Streets Unpaved, Grades Level, Lights Elec.
Numbers Taken from Bureau Map.

KEY	
---	RETAIN WALL
---	WATER TOWER
---	STANDARD
---	STABLE
---	INDICATE RELATIVE HEIGHTS
---	ALTERNATE STREET NUMBERS ARE ACTUAL
---	CONSECUTIVE STREET NOS ARE ARBITRARY

BLACKS LANE



OCT. 1913
BARBOURVILLE
KY.

COLLEGE AV.

DEPOT

LOCK

KNOX

WALNUT

HIGH

DISHMAN

KNOX COUNTY COURT HO.

MAIN

RIVER

WALL

WASHINGTON

RICHLAND

WASHINGTON

SYCAMORE



Scale of Feet.
0 10 20 30 40 50 100 150

